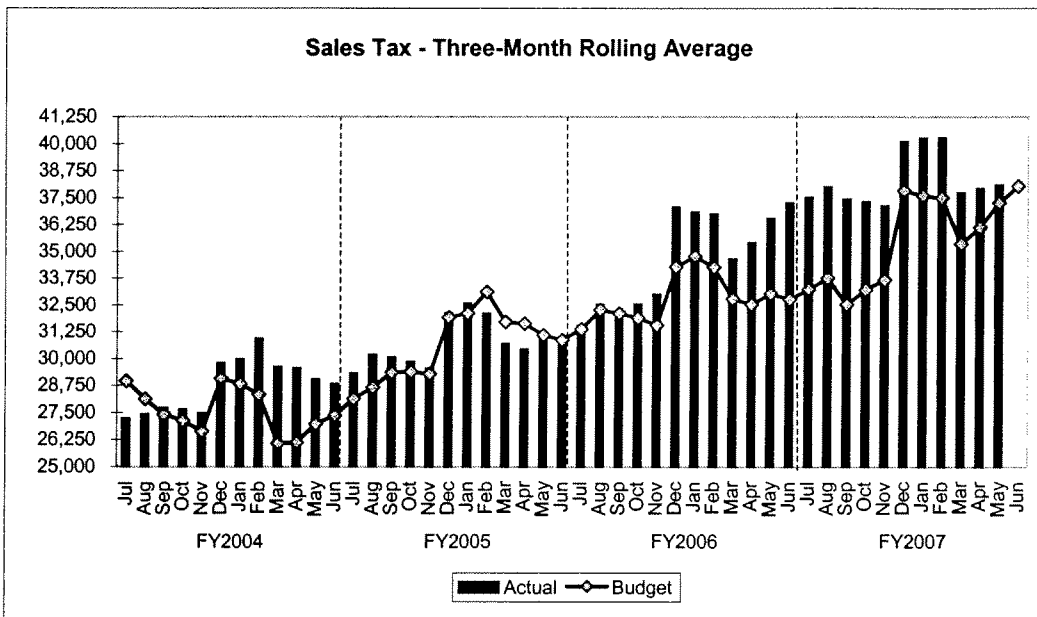
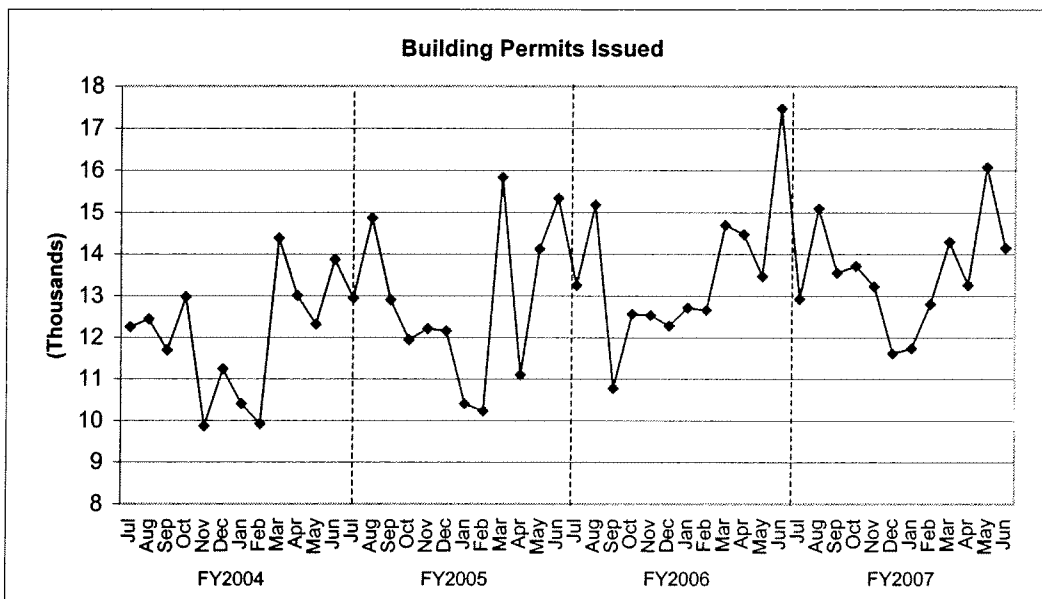


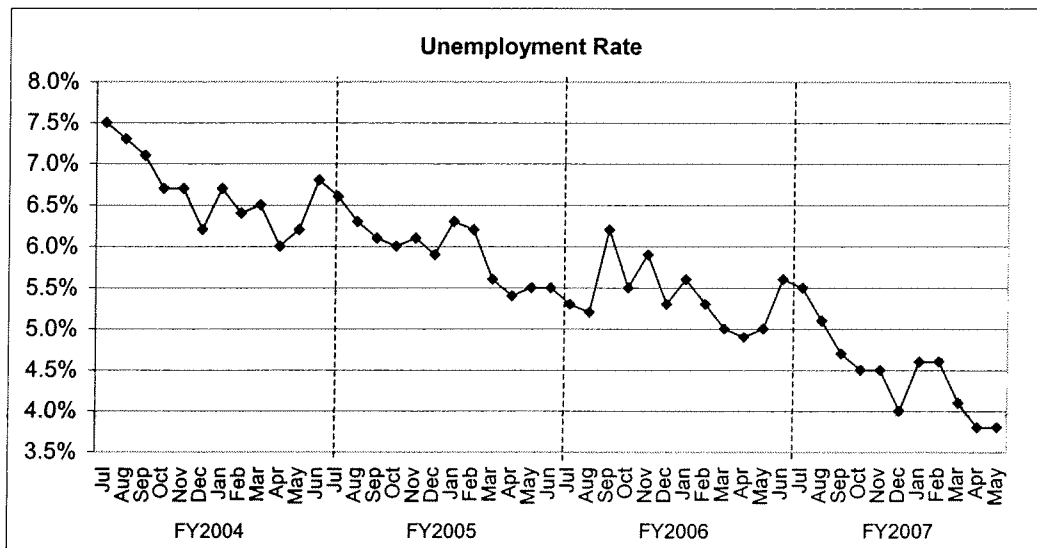
TREND INDICATORS - LOCAL ECONOMY



Source: Office of State Comptroller

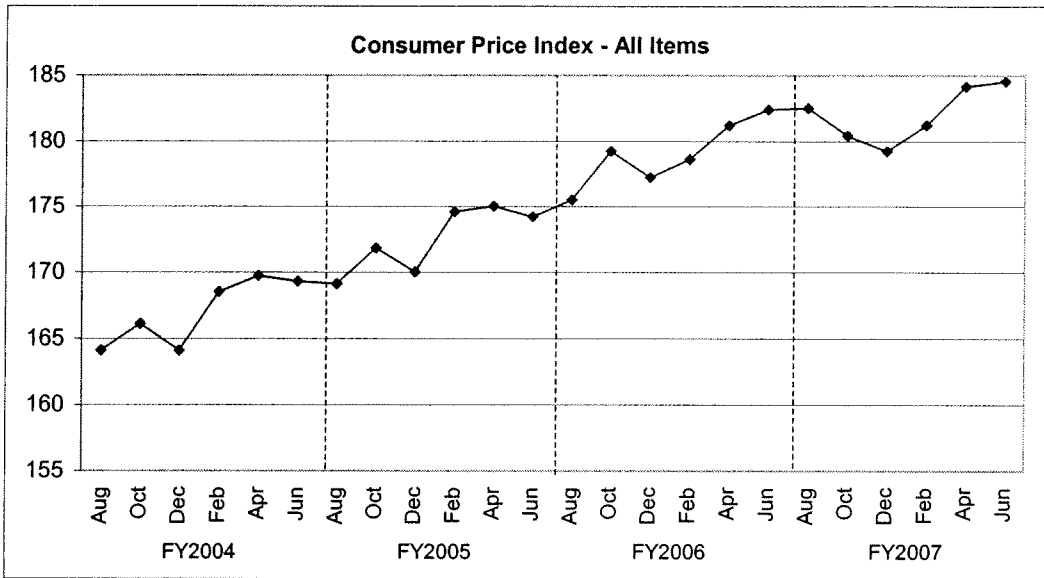


Source: City of Houston Planning and Development Department

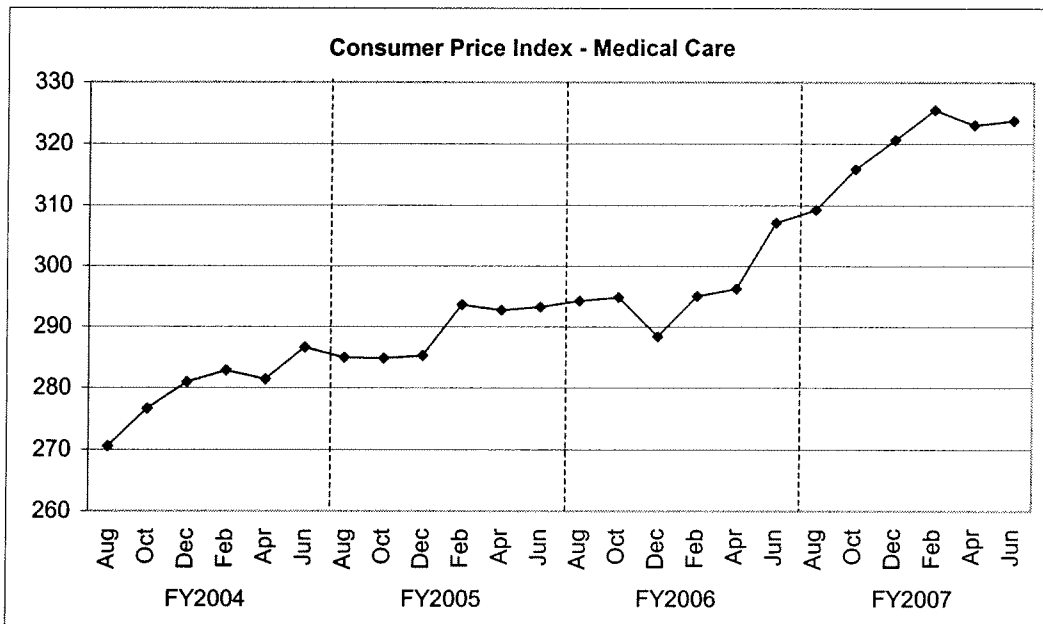


Source: Databook Houston; University of Houston Center for Public Policy; not seasonally adjusted

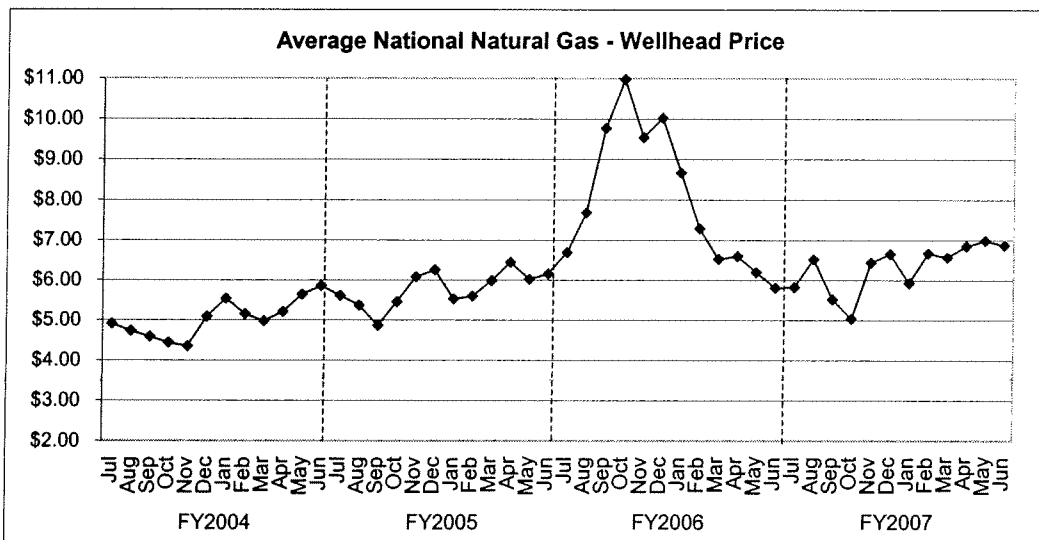
TREND INDICATORS - LOCAL ECONOMY



Source: Bureau of Labor Statistics - Houston, Galveston, Brazoria TX

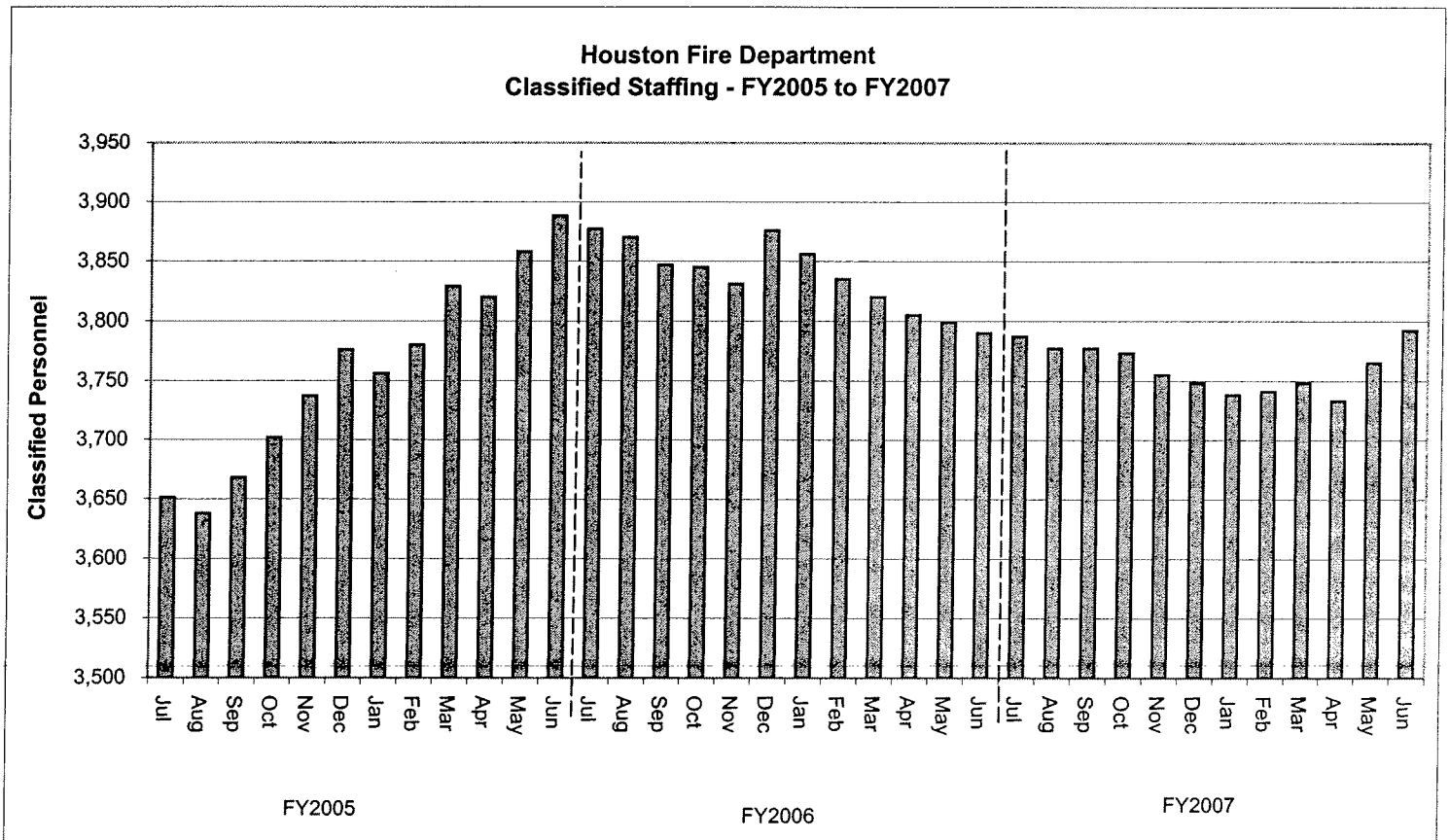
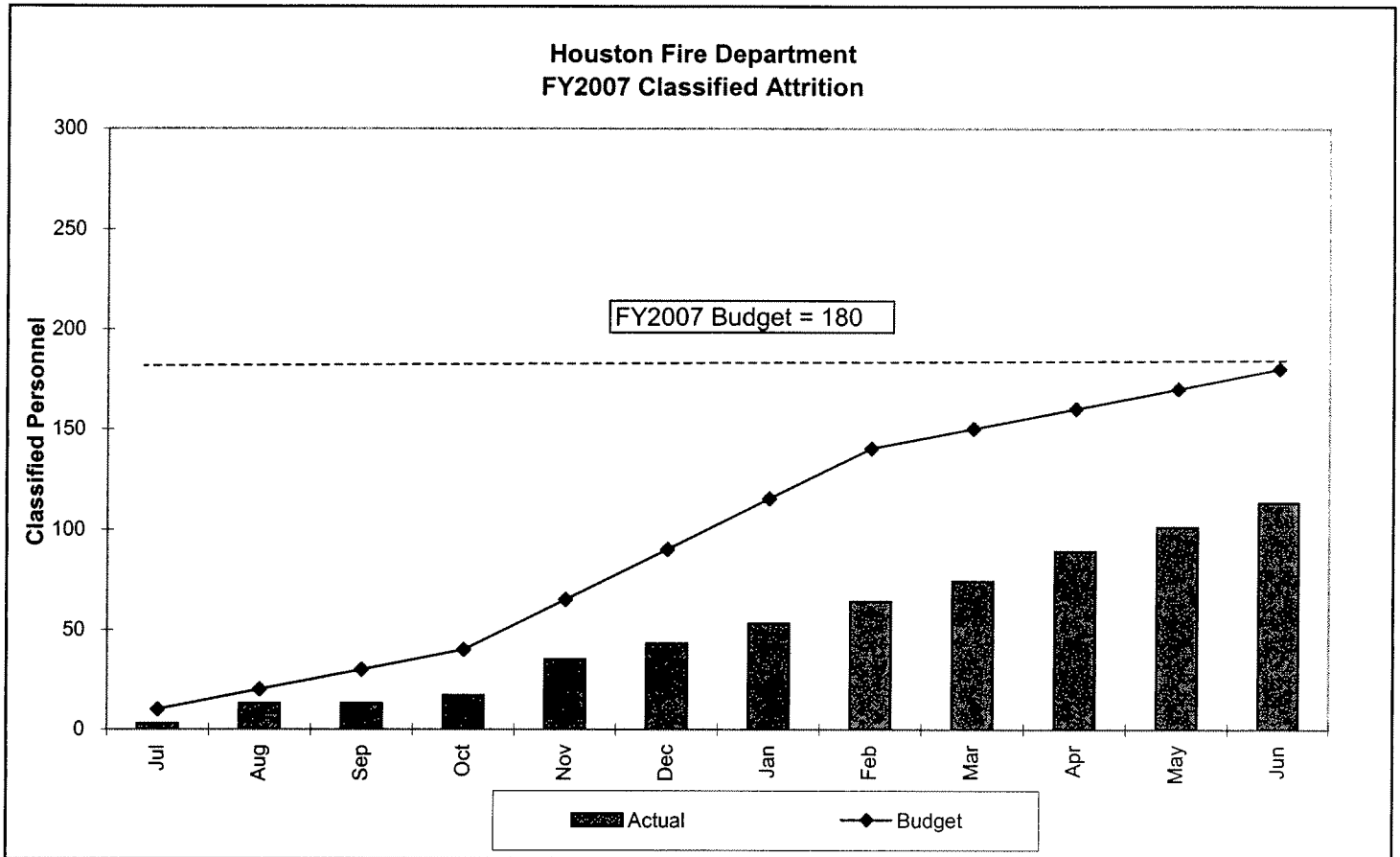


Source: Bureau of Labor Statistics - Houston, Galveston, Brazoria TX

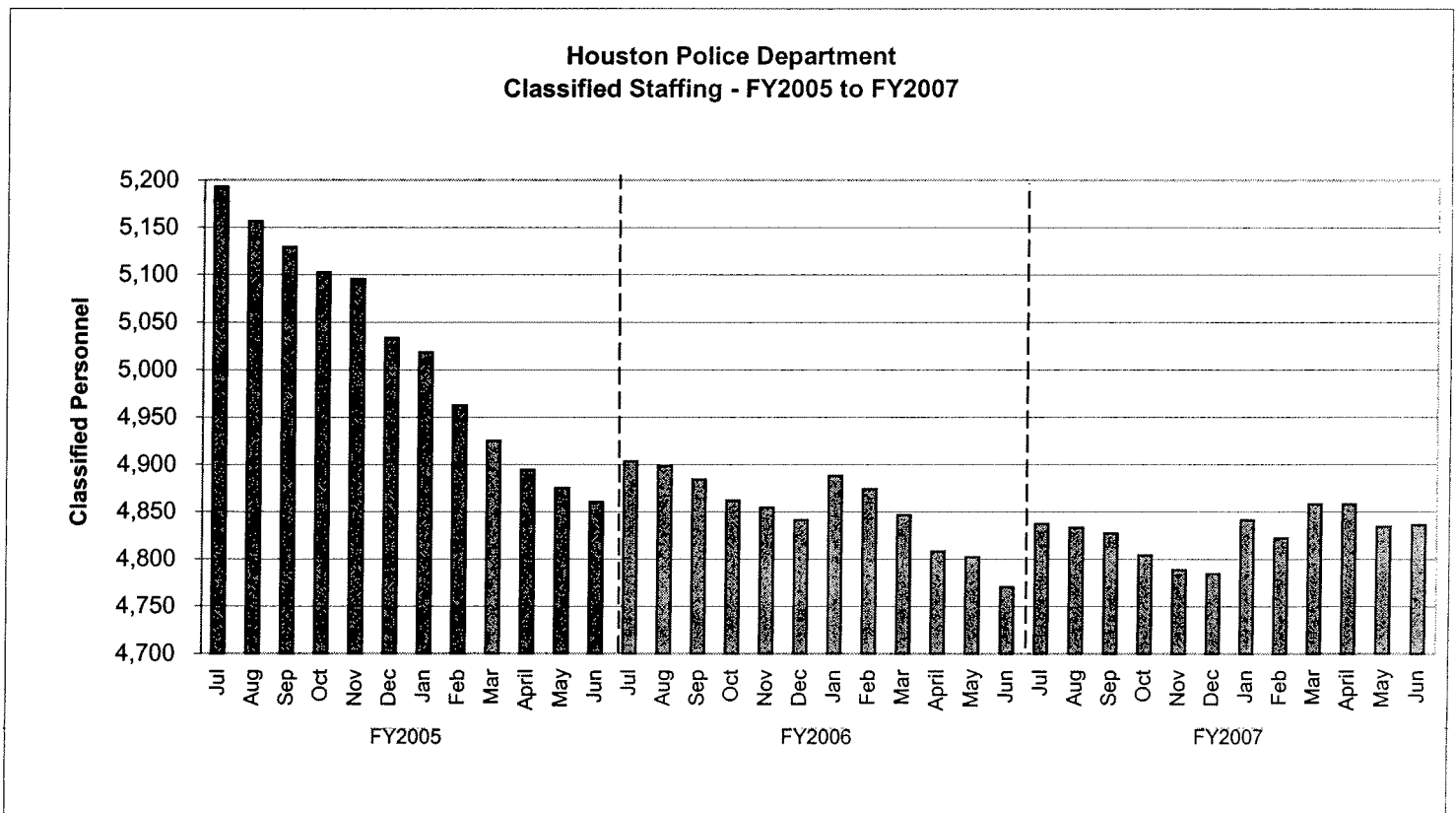
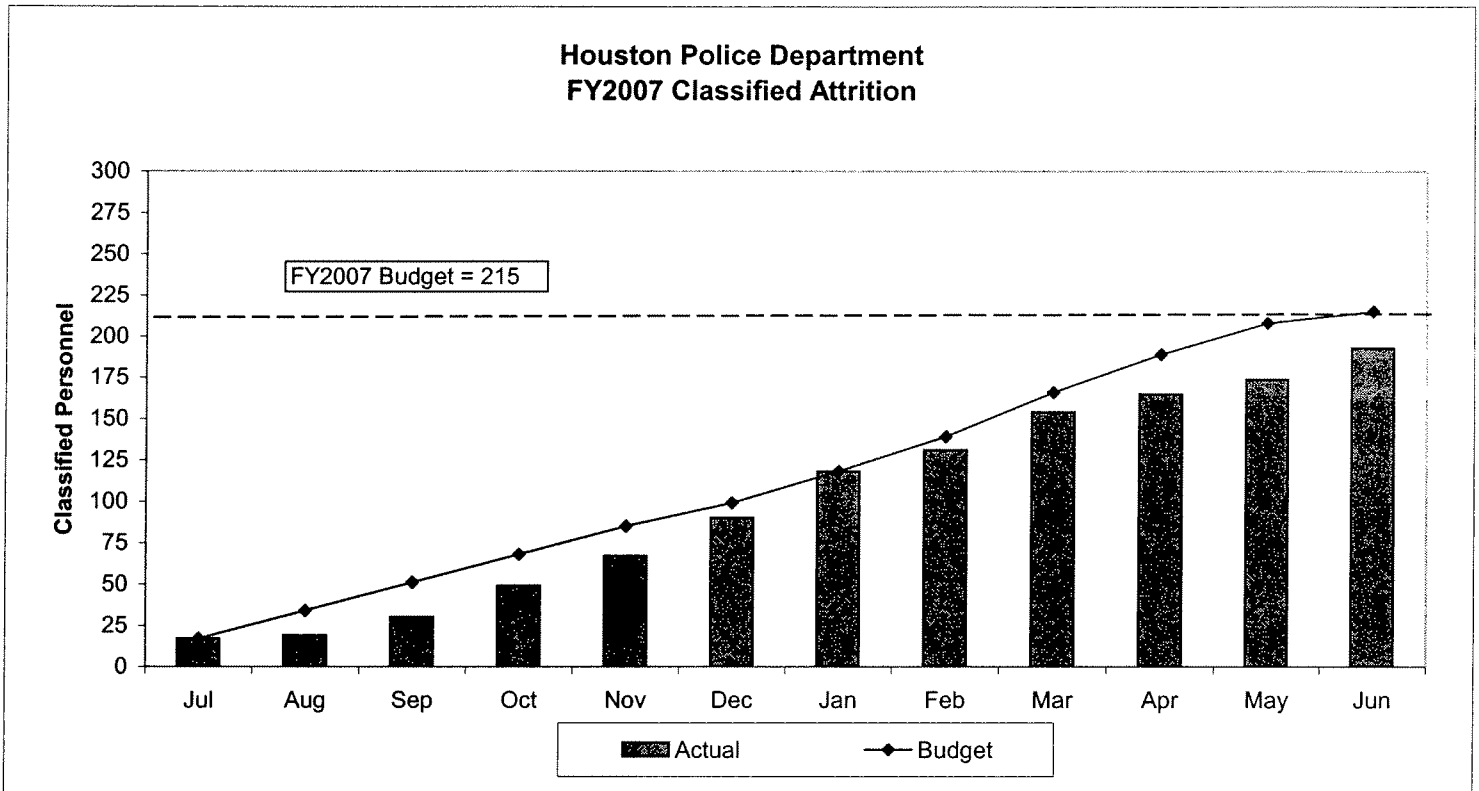


Source: Energy Information Administration/Natural Gas Monthly

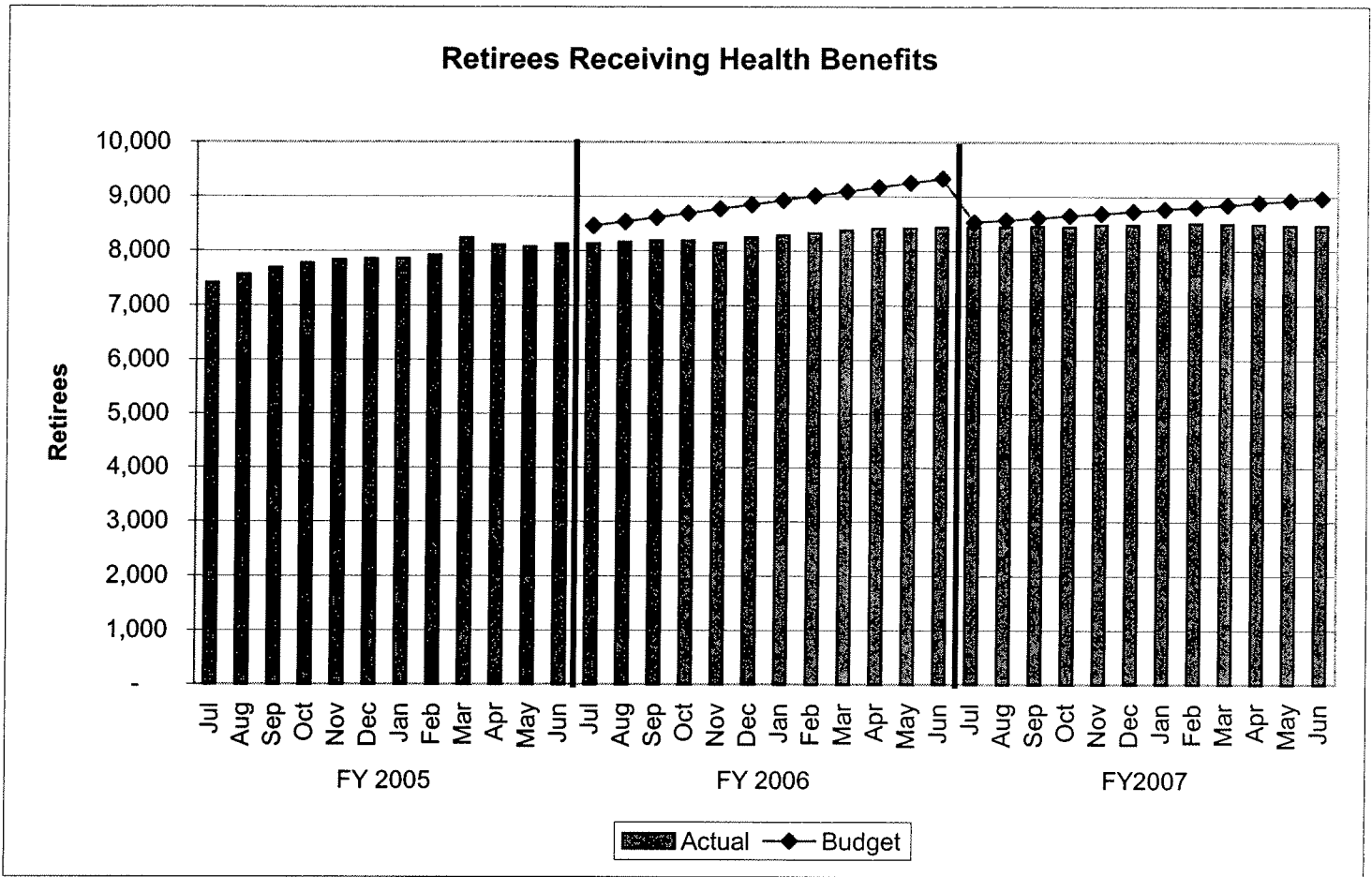
TREND INDICATORS - RETIREMENTS



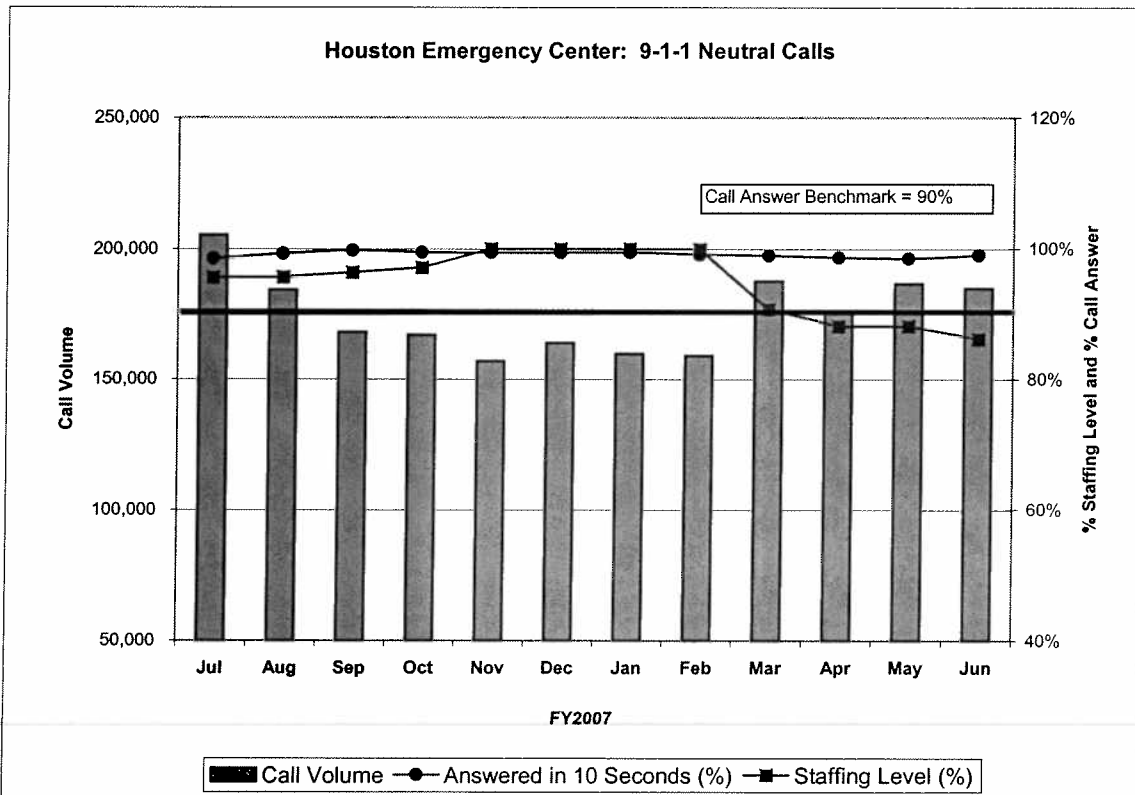
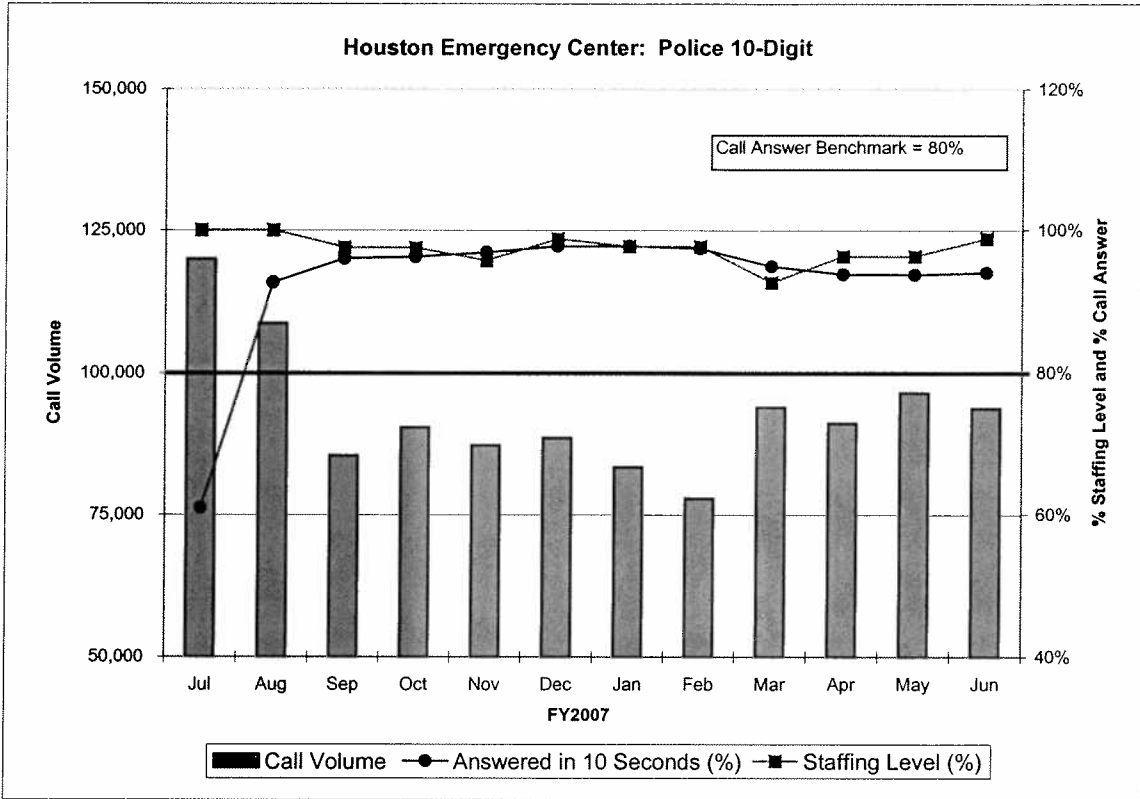
TREND INDICATORS - HIRING AND RETIREMENTS



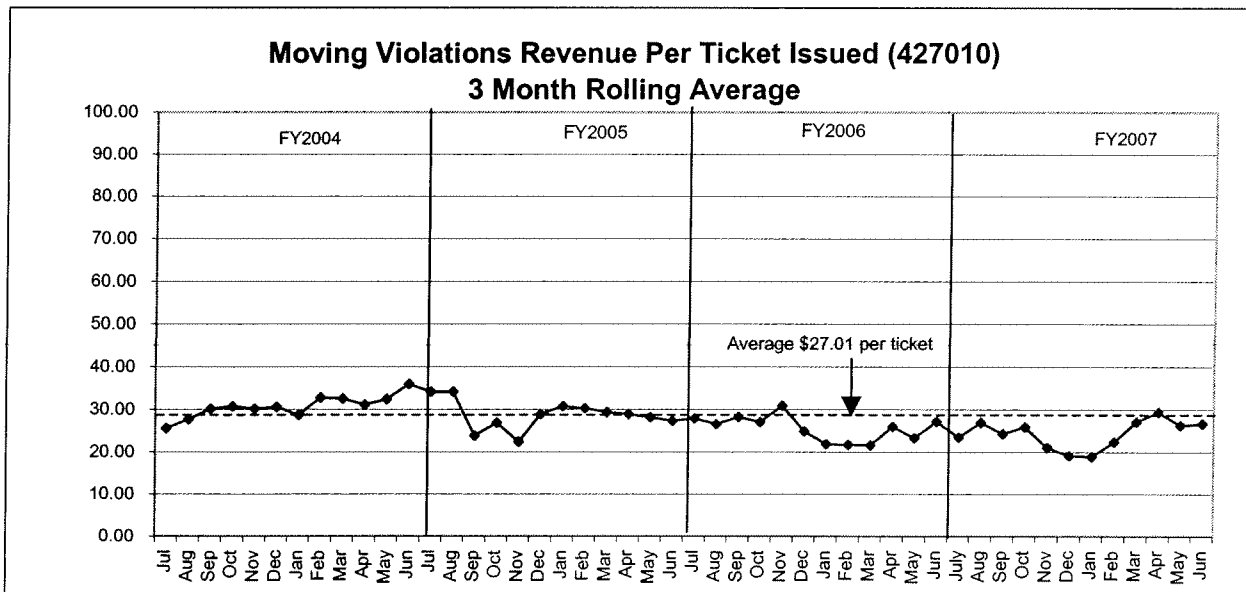
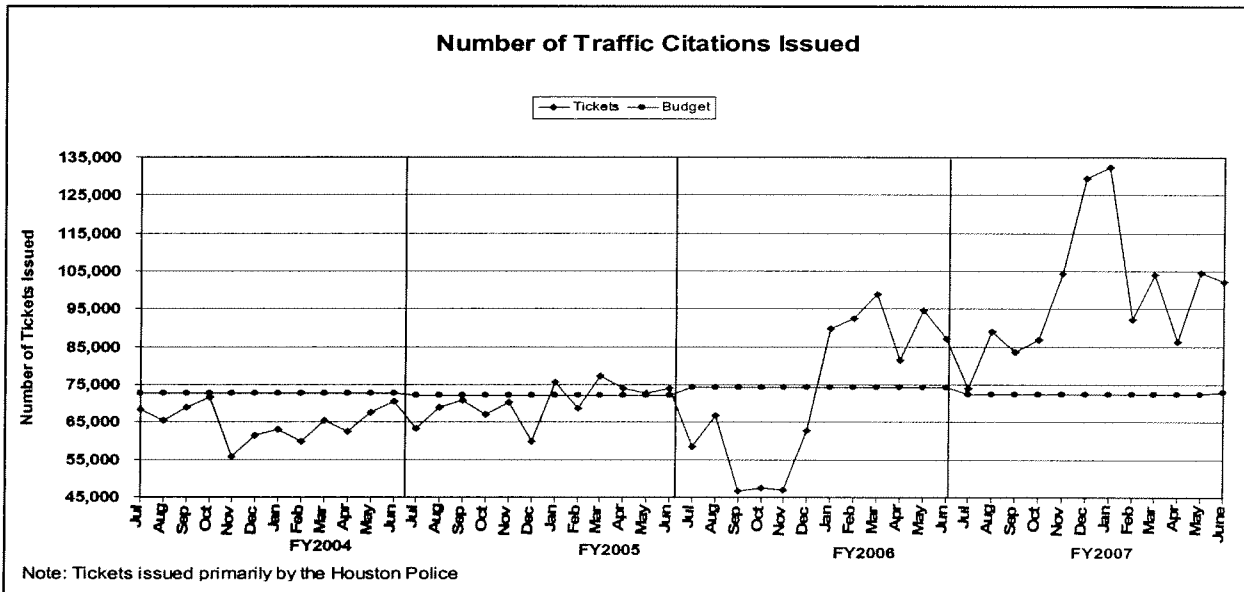
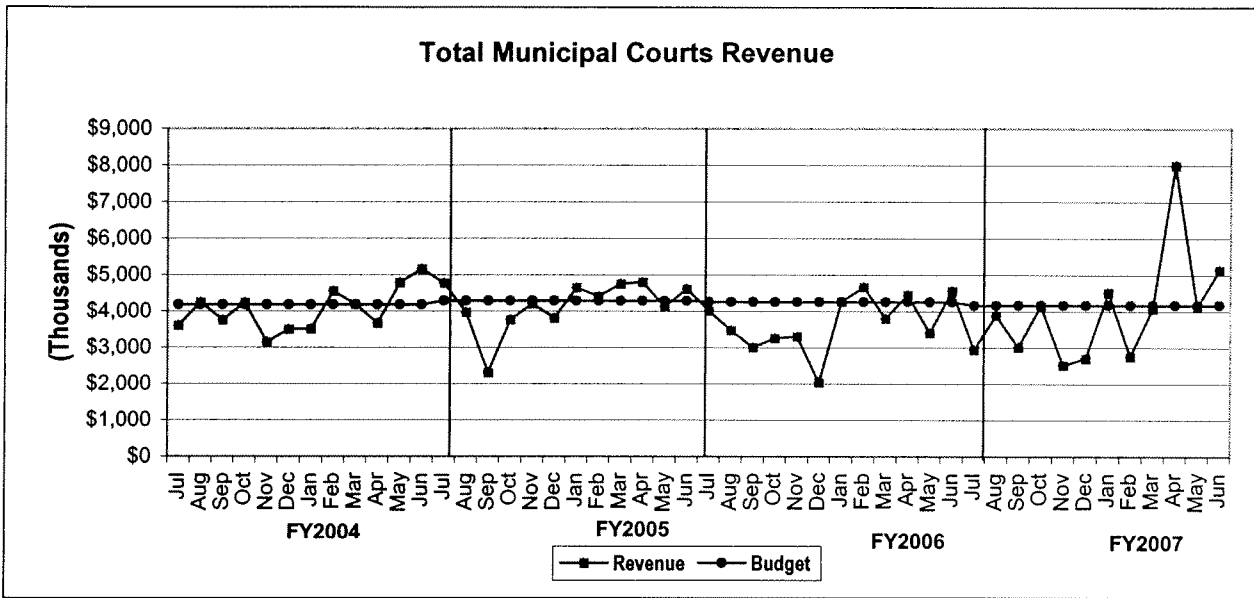
TREND INDICATORS - RETIREMENTS



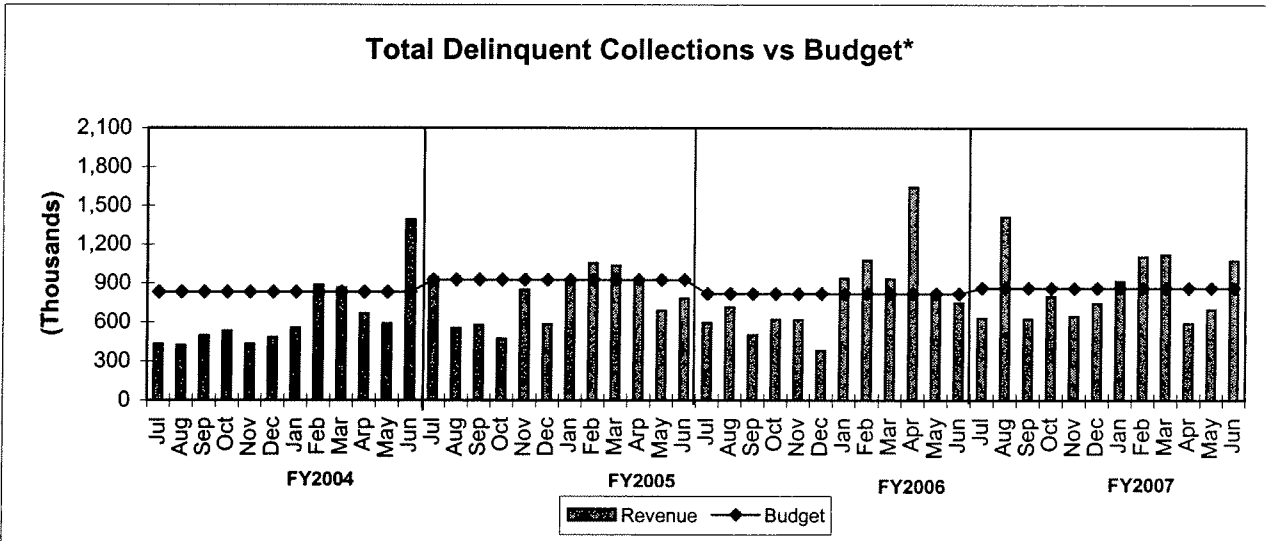
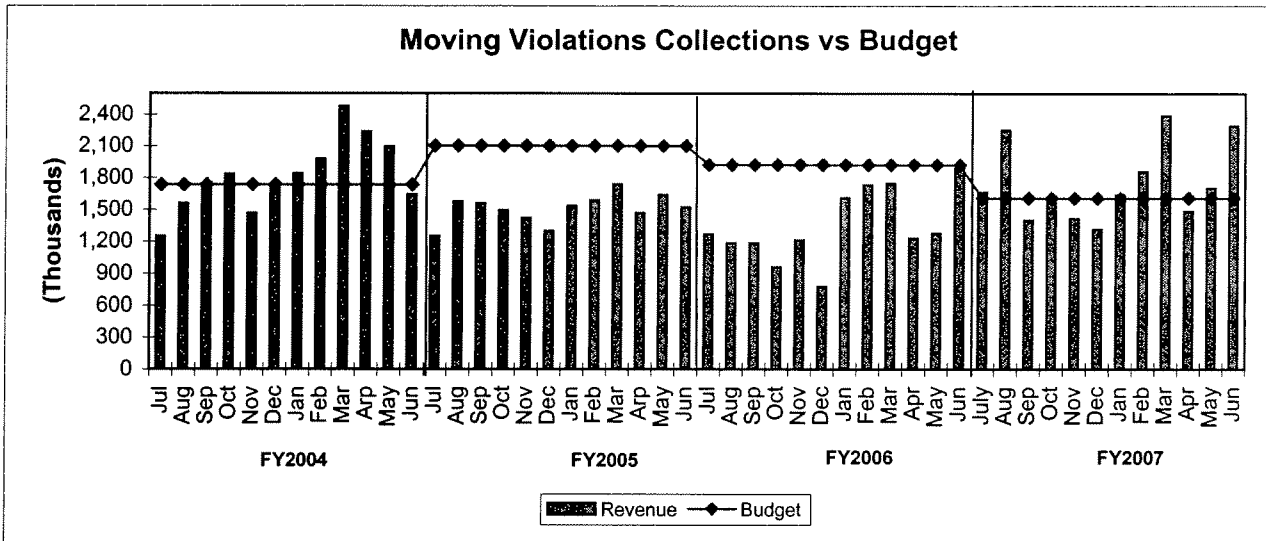
TREND INDICATORS - HOUSTON EMERGENCY CENTER



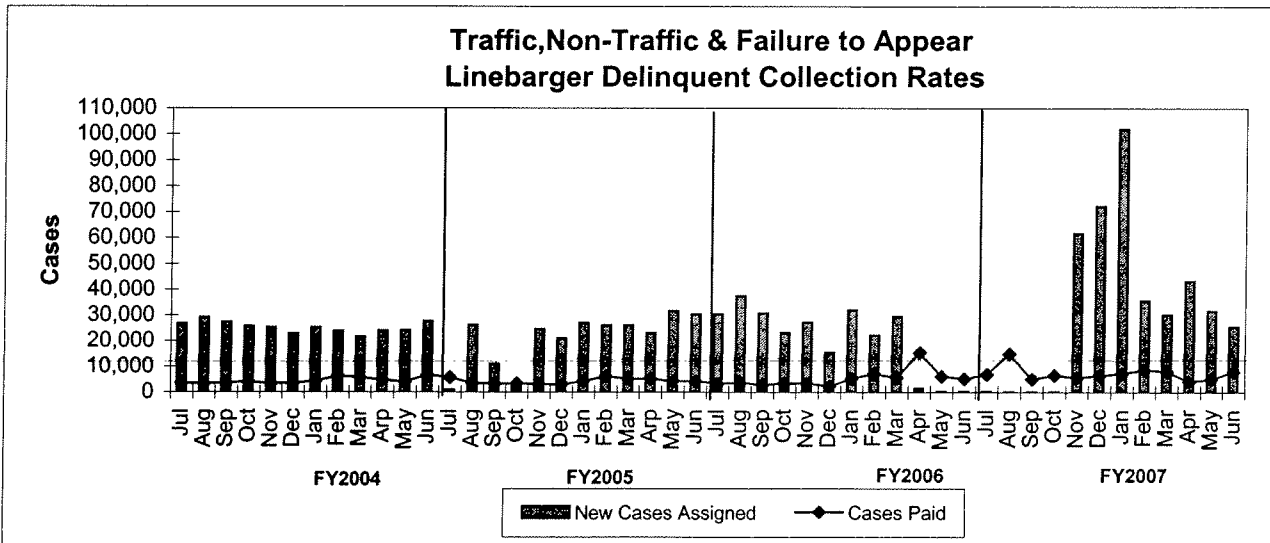
TREND INDICATORS - MUNICIPAL COURTS



TREND INDICATORS - MUNICIPAL COURTS



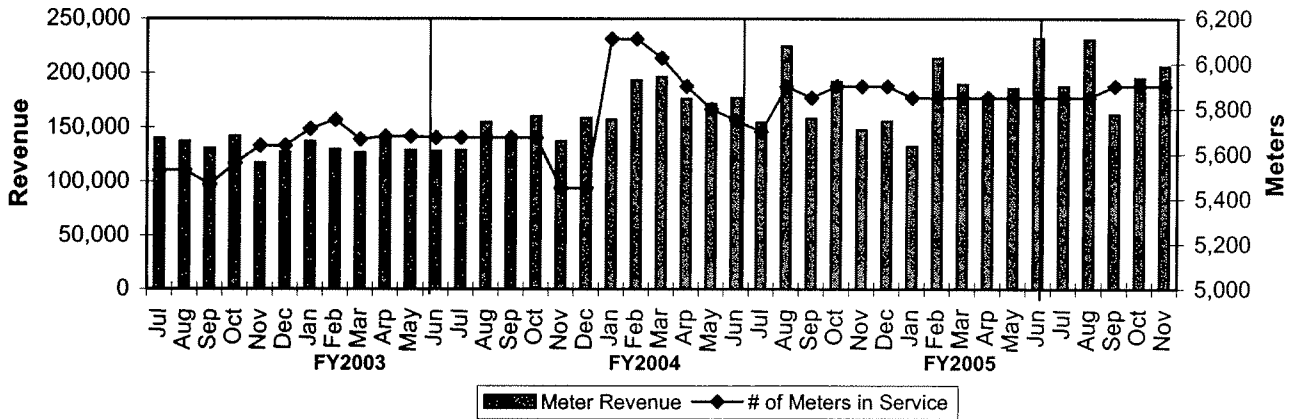
*Net of fees and expenses paid to Lineberger



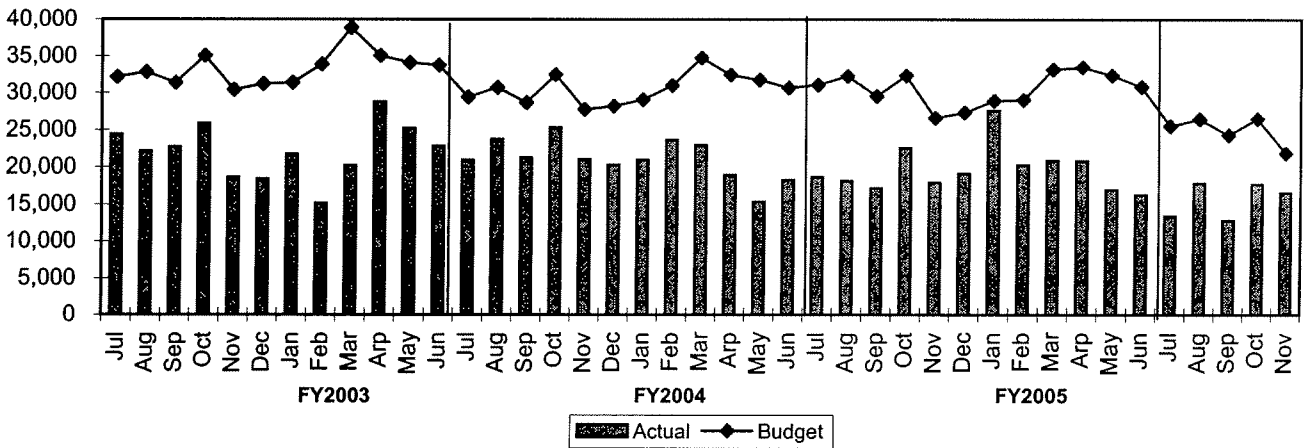
*Excludes Delinquent Parking Collections

TREND INDICATORS - MUNICIPAL COURTS

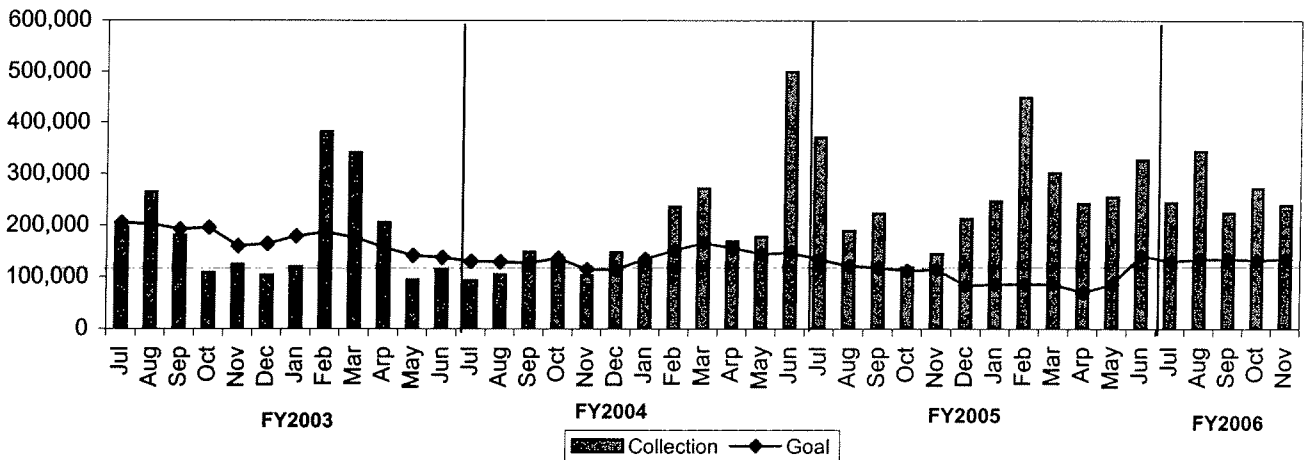
Meter Revenue vs # Meters in Service



Parking Violations vs Budget

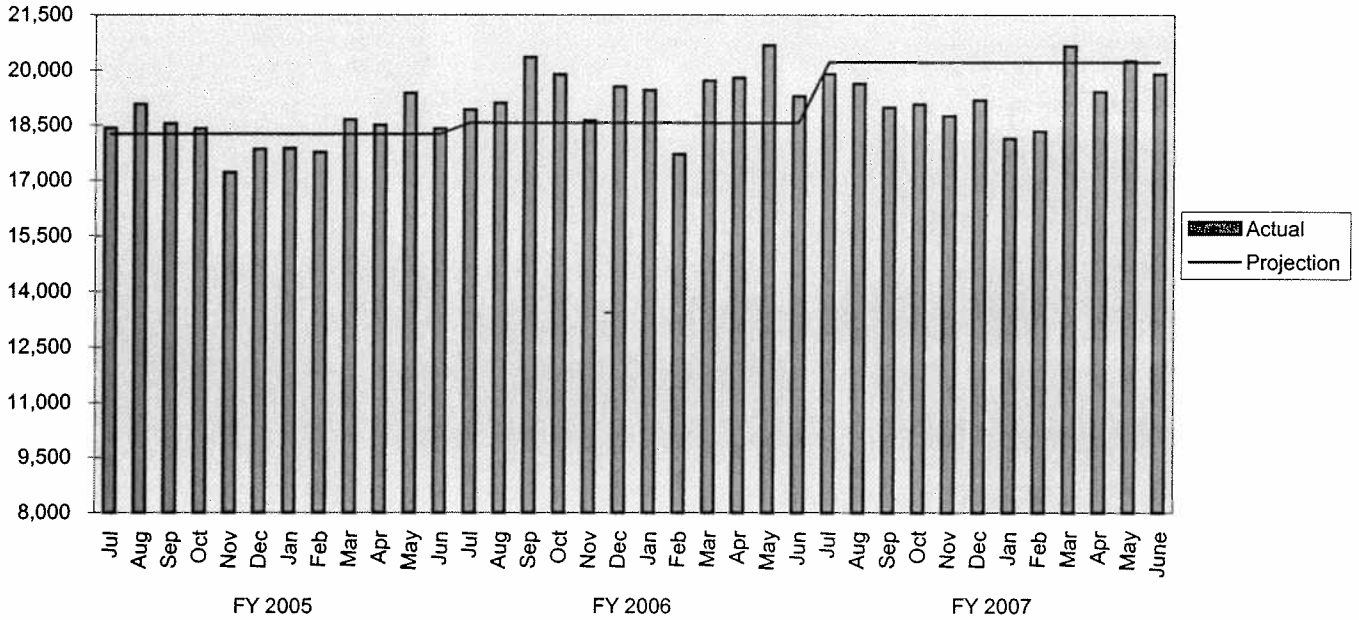


Delinquent Parking Collections vs Delinquent Goal Amount

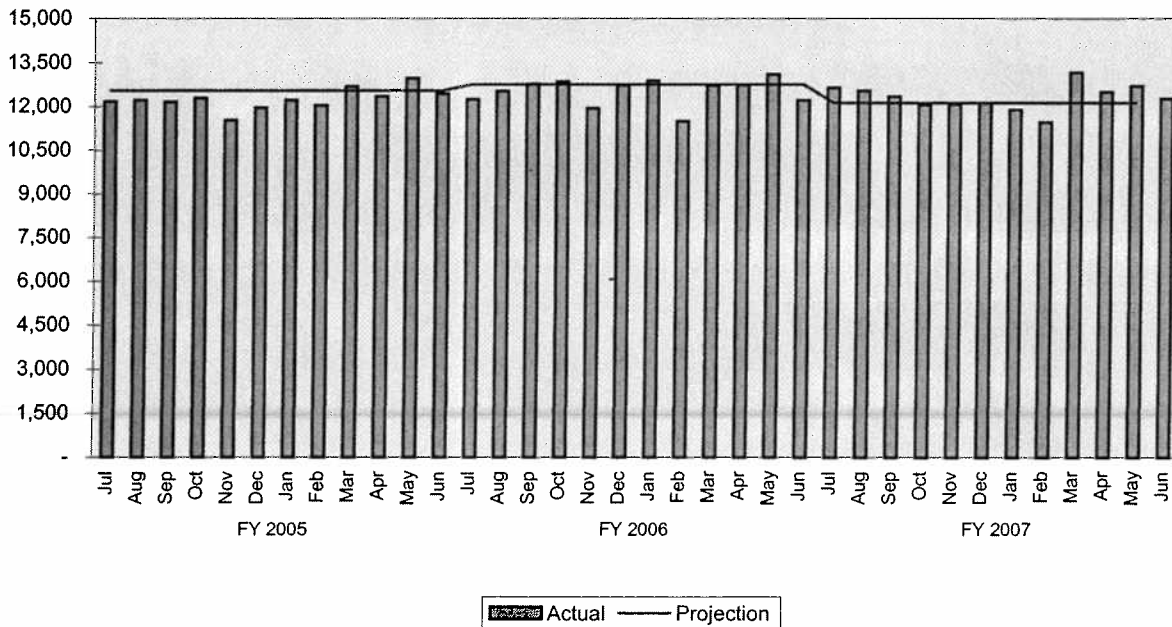


TREND INDICATORS - AMBULANCE SERVICES

EMS Incidents

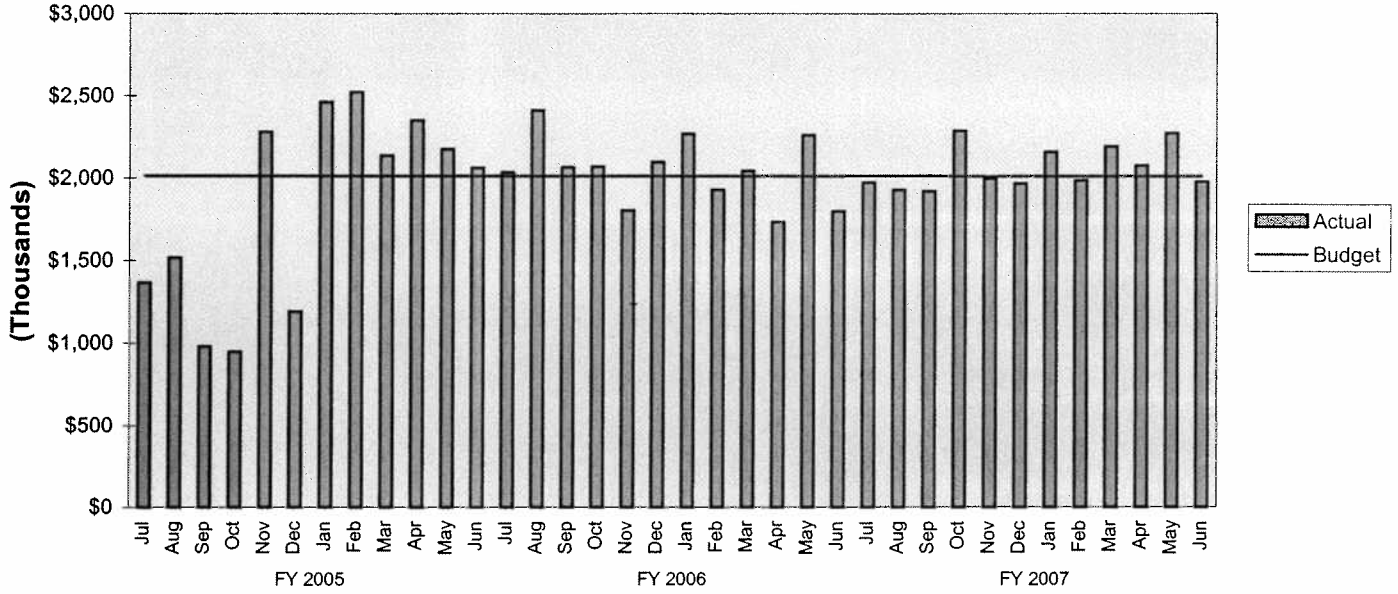


EMS Transports

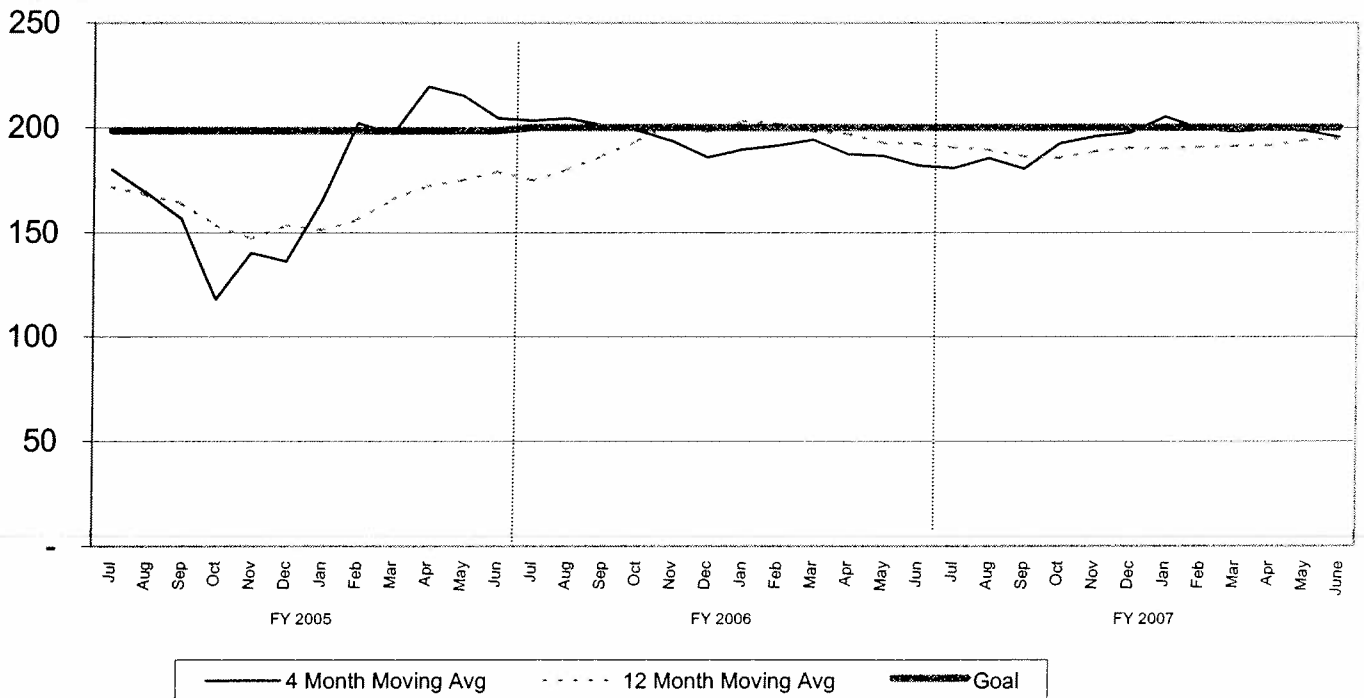


TREND INDICATORS - AMBULANCE SERVICES

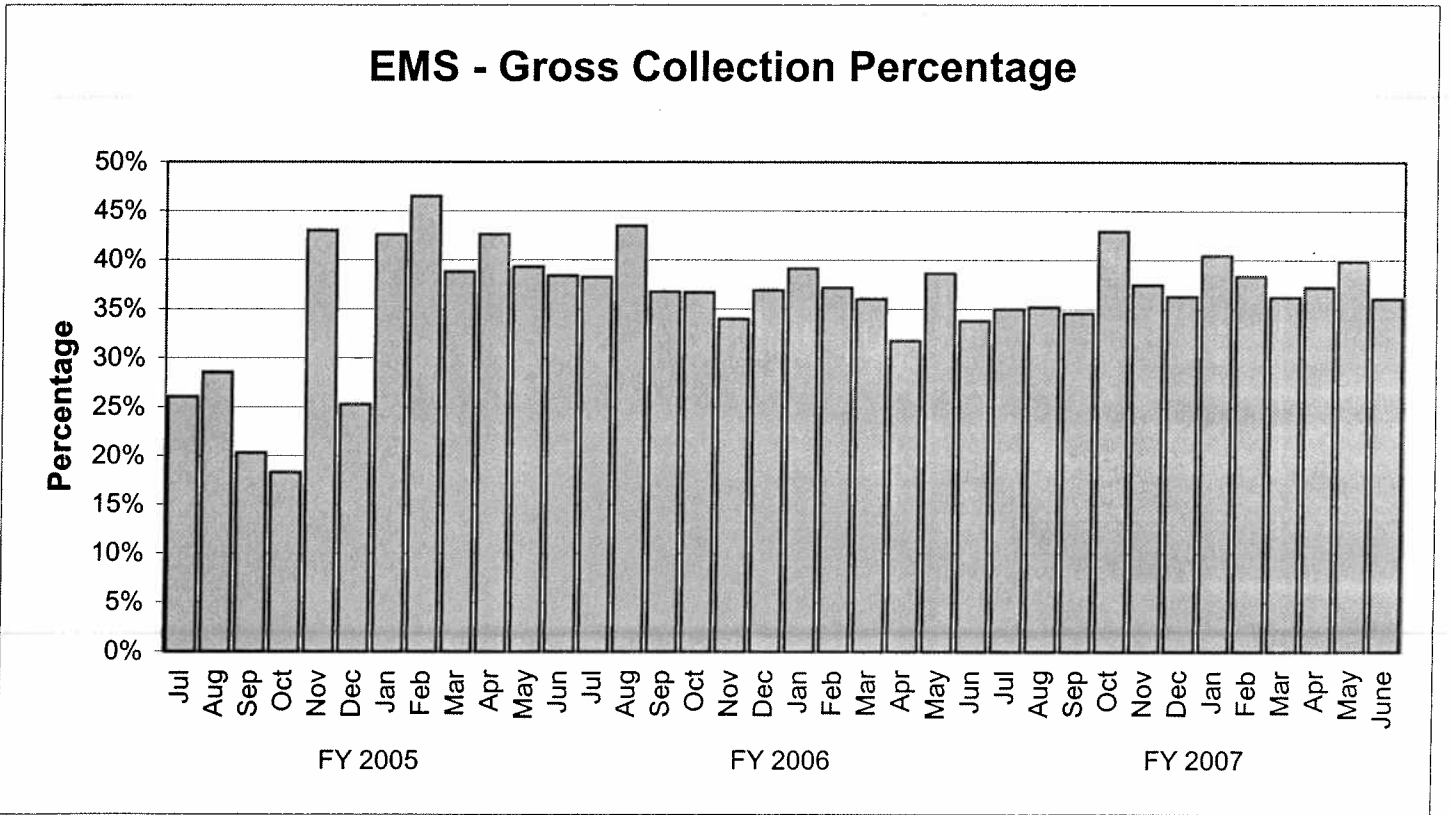
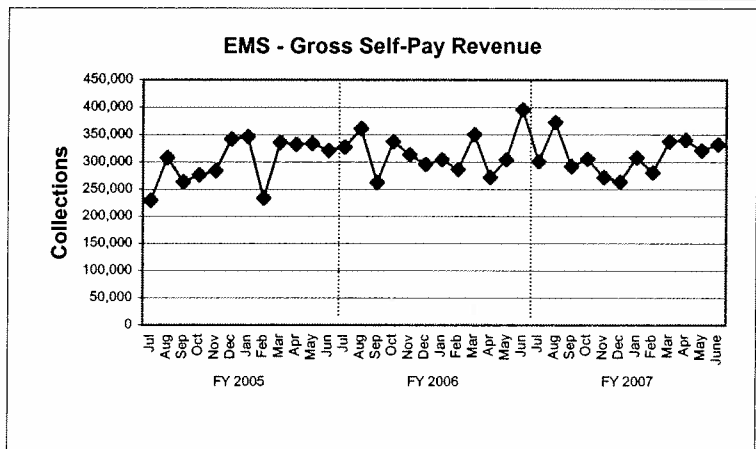
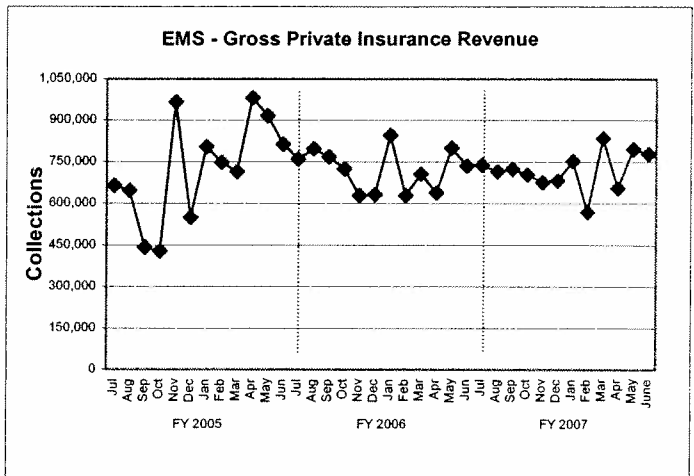
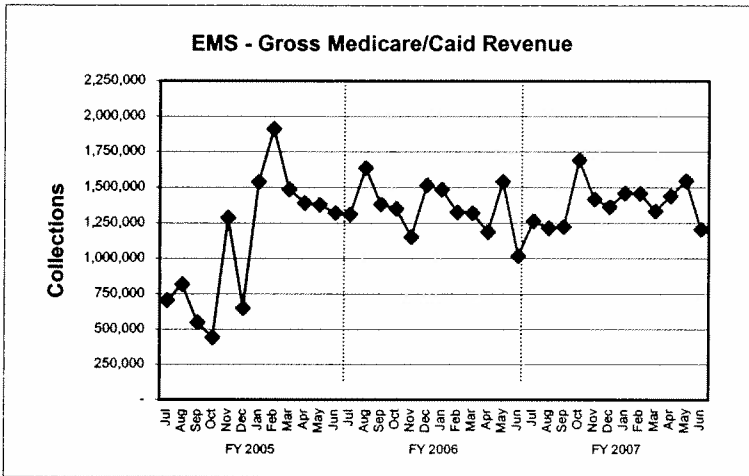
EMS Revenue (Net Collections)



4 Month and 12 Month Moving Average EMS Revenue Per Transport



TREND INDICATORS - AMBULANCE SERVICES



TREND INDICATORS - MISCELLANEOUS

