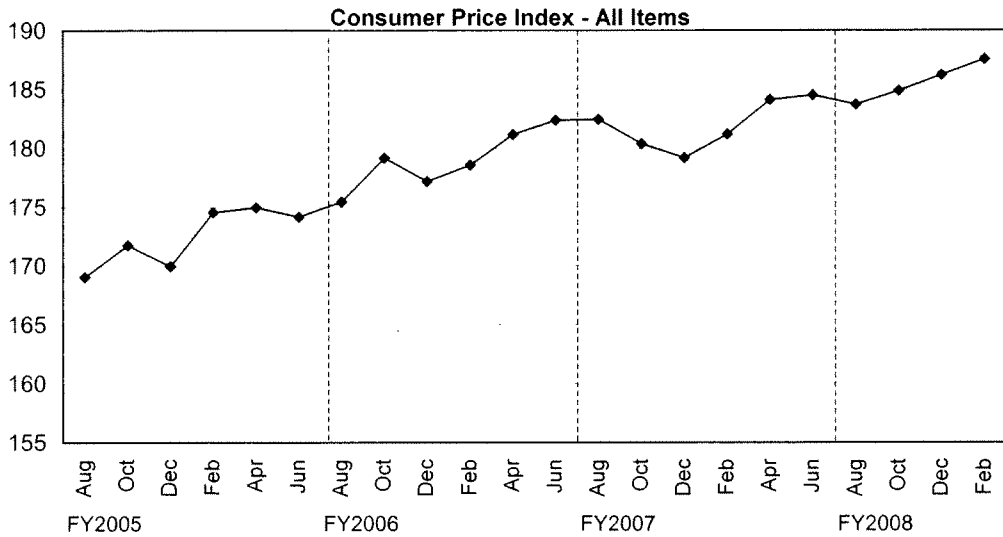
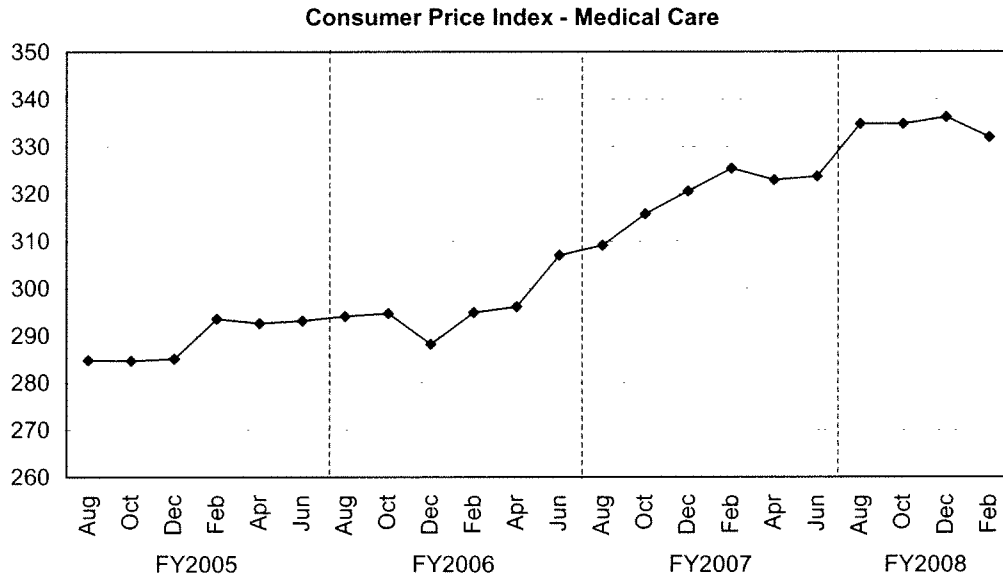


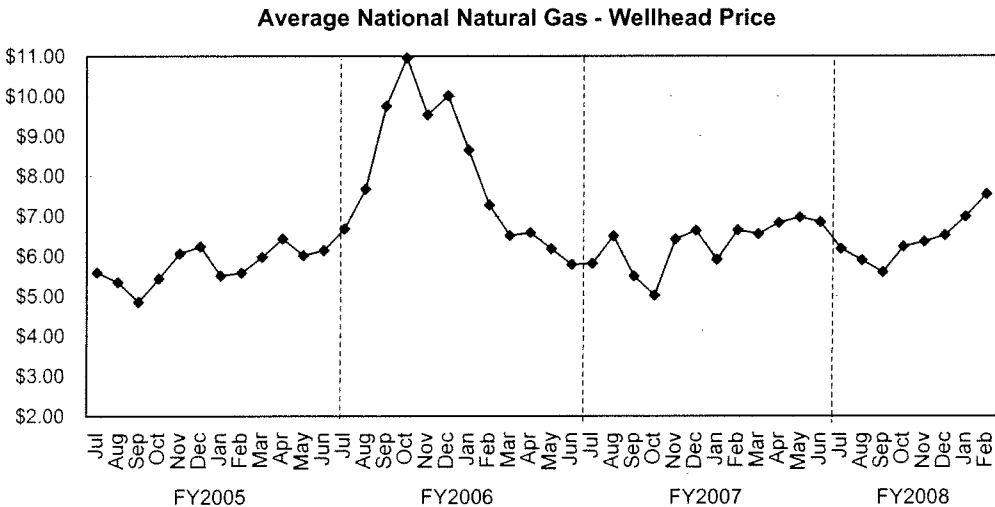
TREND INDICATORS - LOCAL ECONOMY



Source: Bureau of Labor Statistics - Houston, Galveston, Brazoria TX

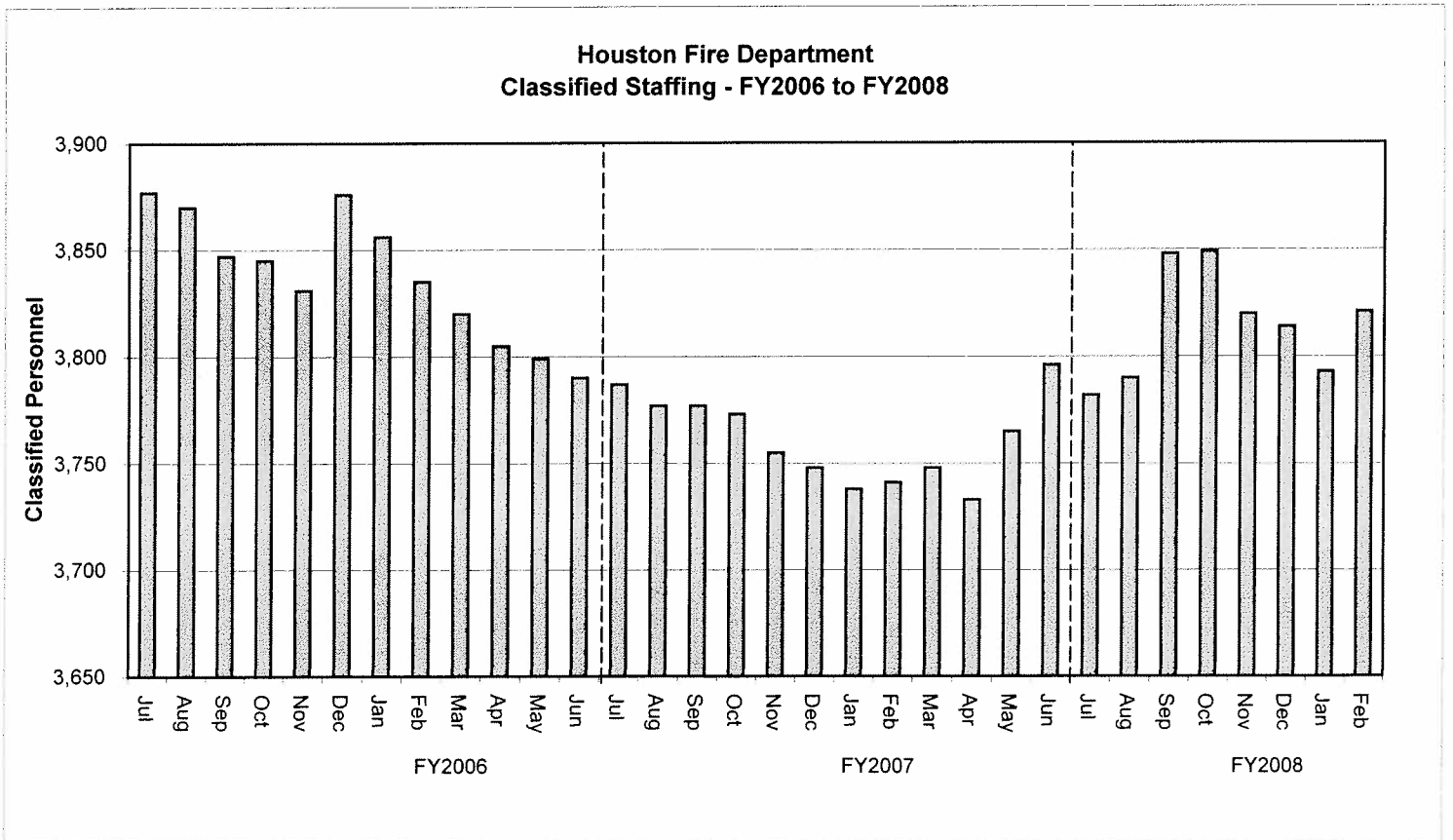
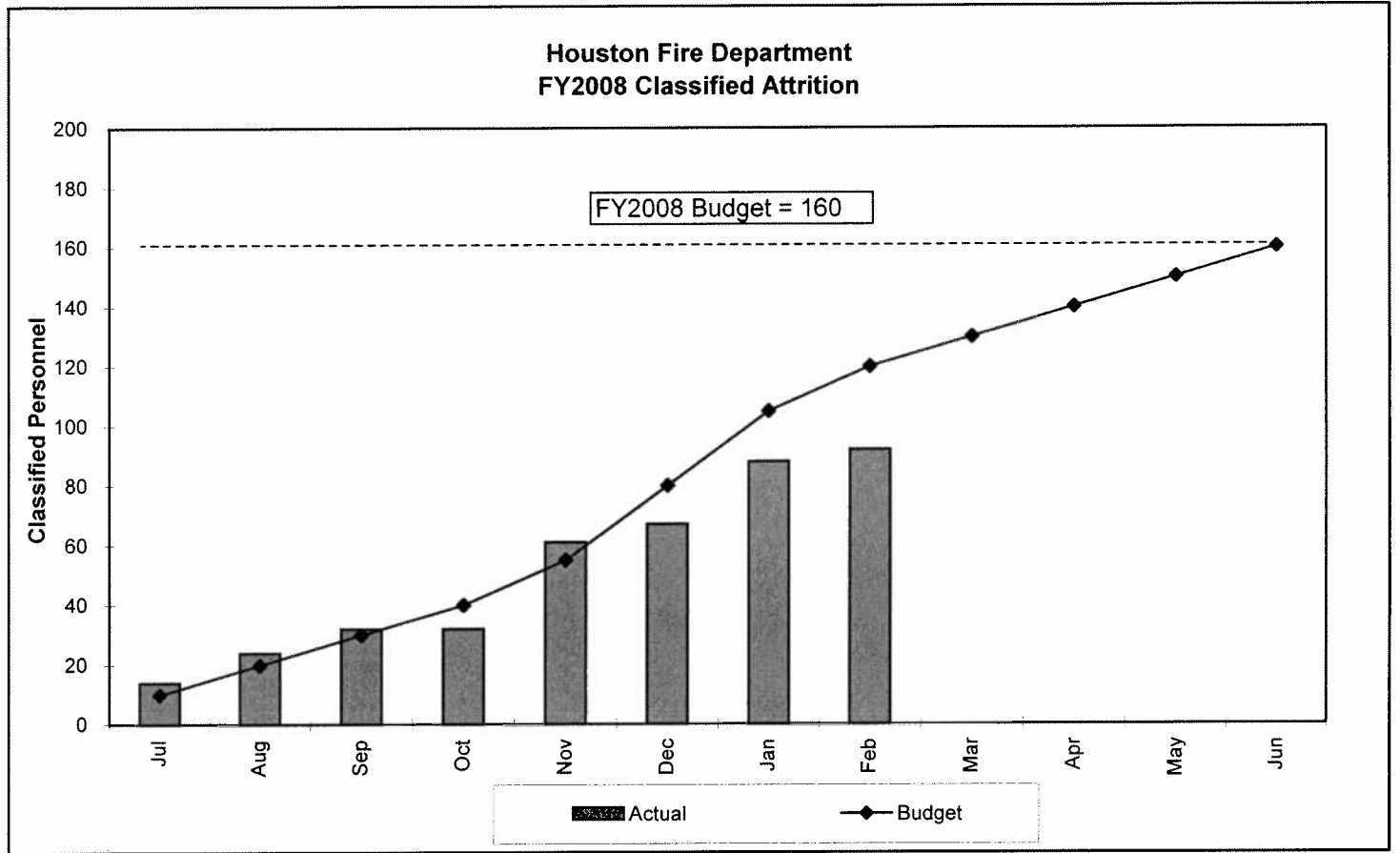


Source: Bureau of Labor Statistics - Houston, Galveston, Brazoria TX



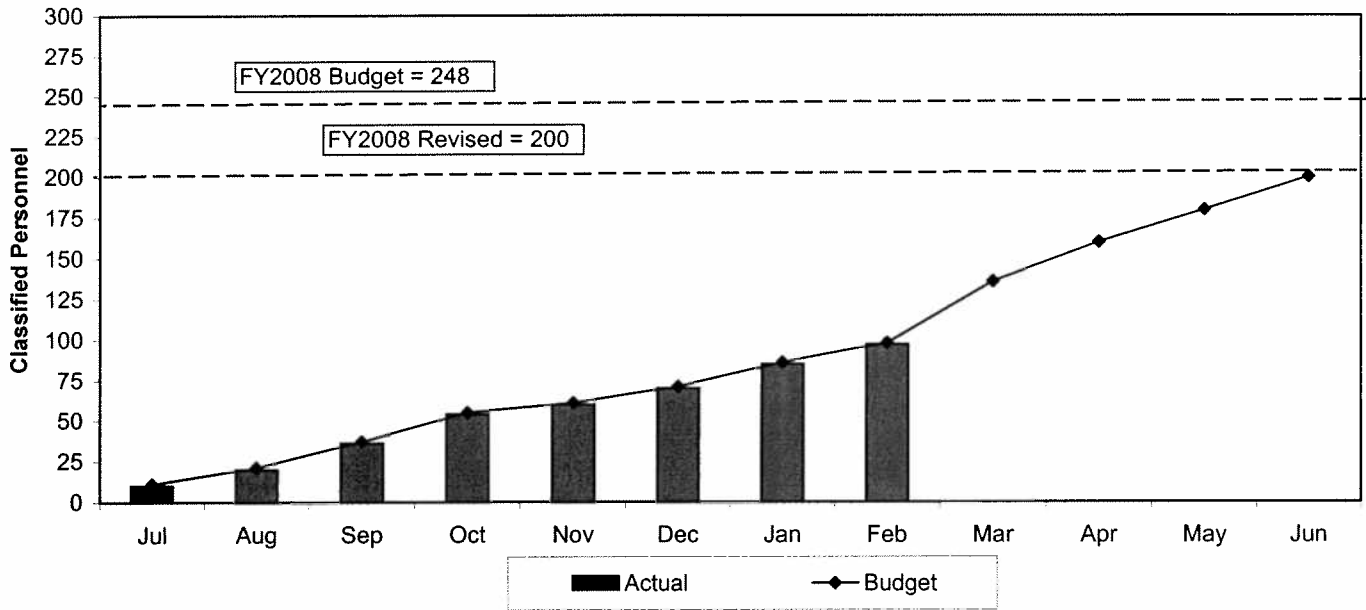
Source: Energy Information Administration/Natural Gas Monthly

TREND INDICATORS - RETIREMENTS

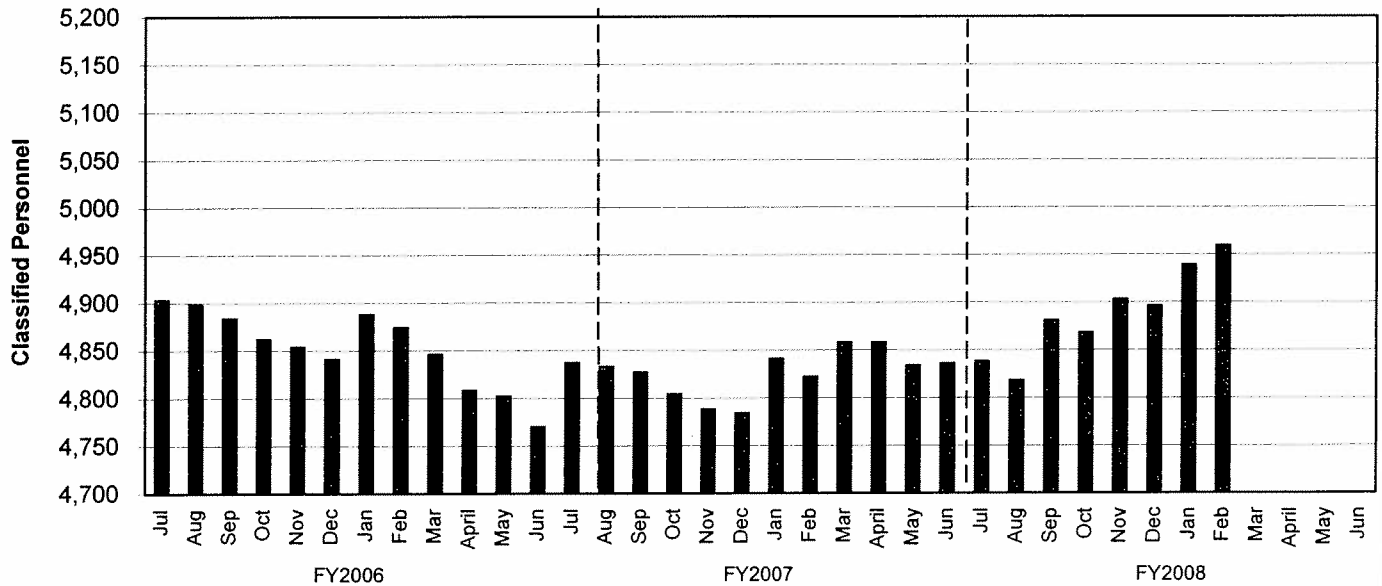


TREND INDICATORS - HIRING AND RETIREMENTS

**Houston Police Department
FY2008 Classified Attrition**

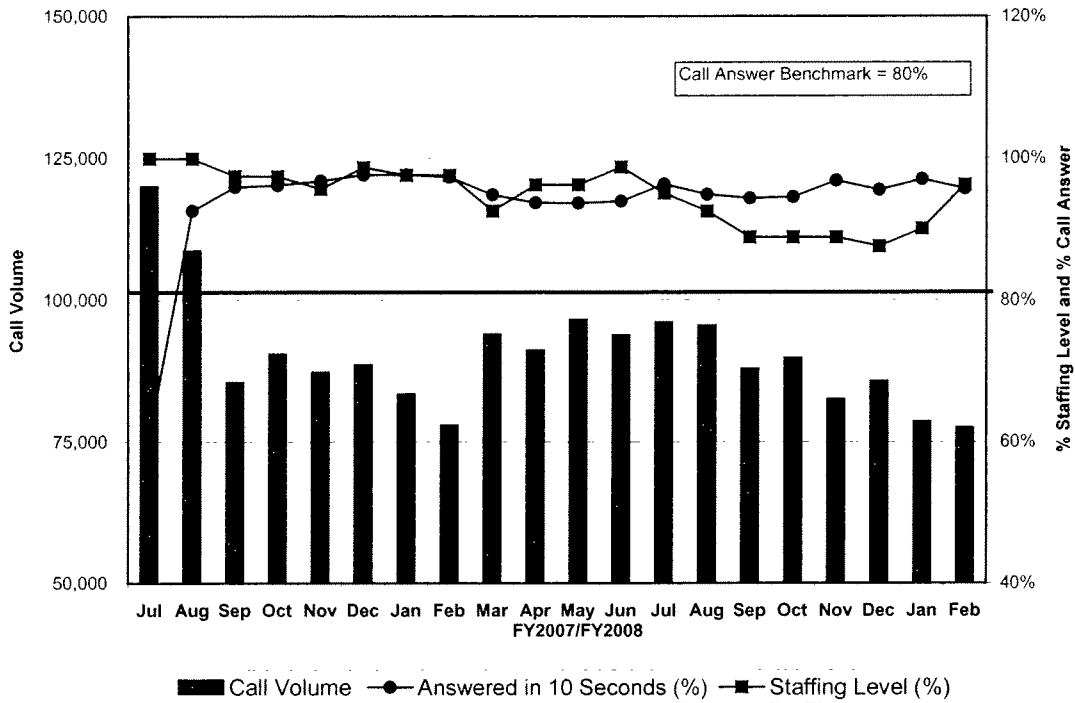


**Houston Police Department
Classified Staffing - FY2006 to FY2008**

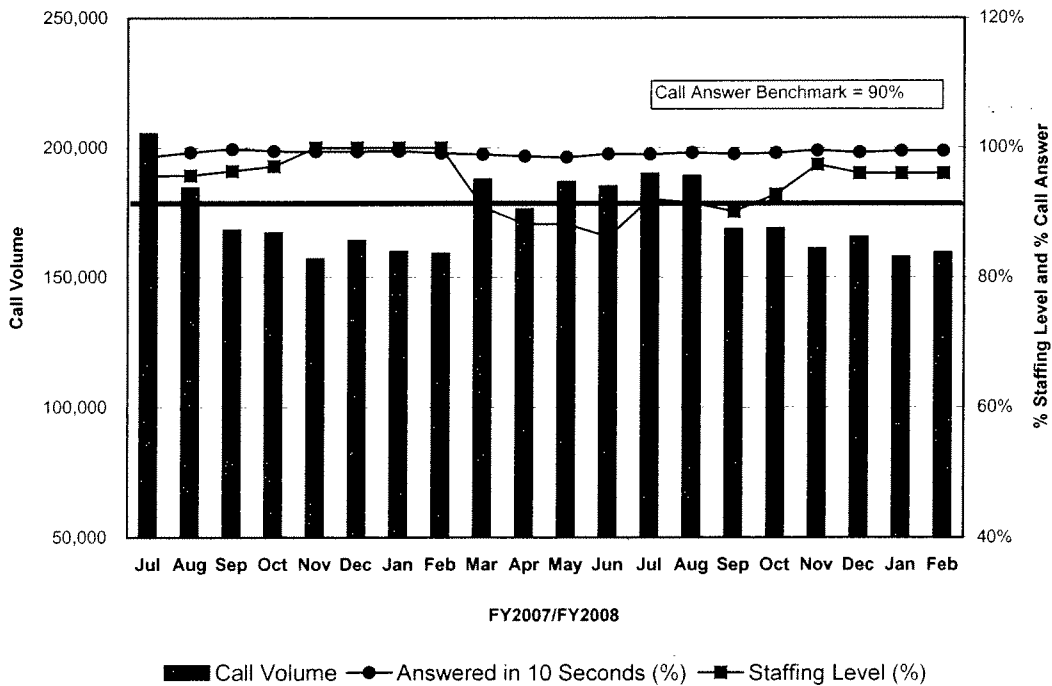


TREND INDICATORS - HOUSTON EMERGENCY CENTER

Houston Emergency Center: Police 10-Digit

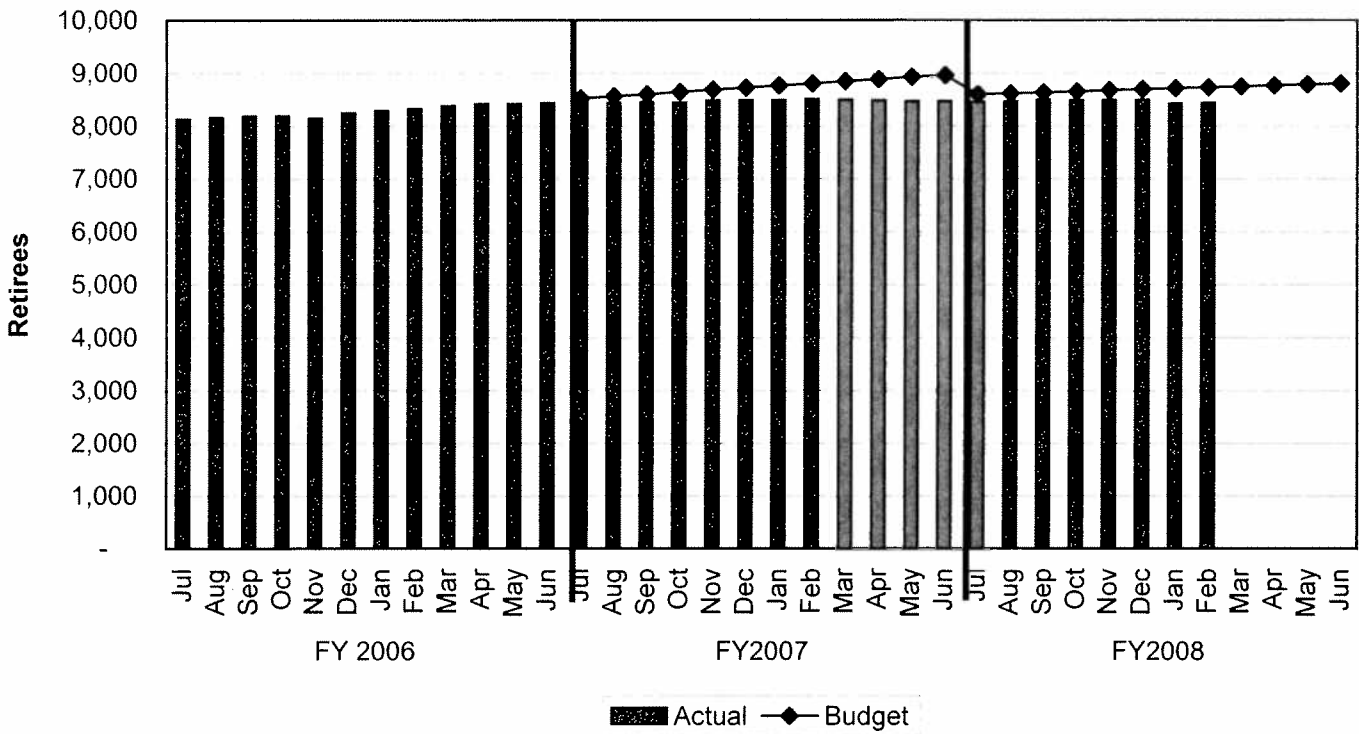


Houston Emergency Center: 9-1-1 Neutral Calls



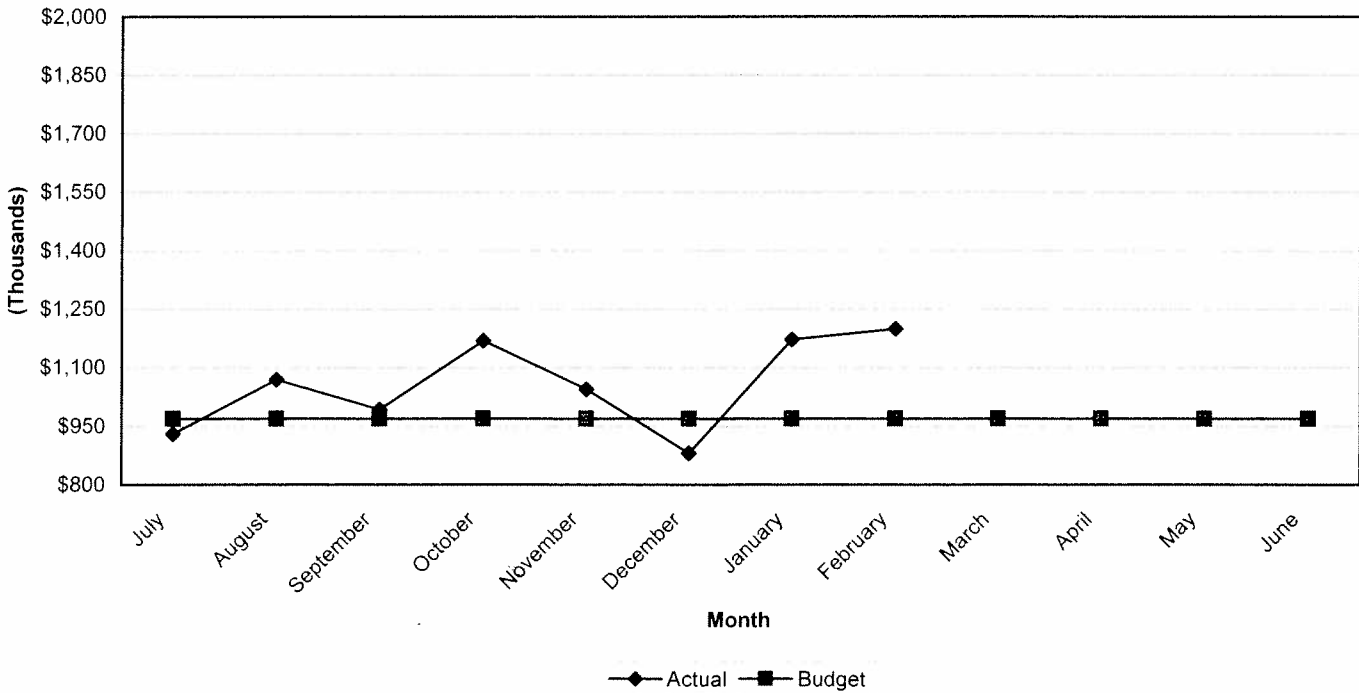
TREND INDICATORS - RETIREMENTS

Retirees Receiving Health Benefits



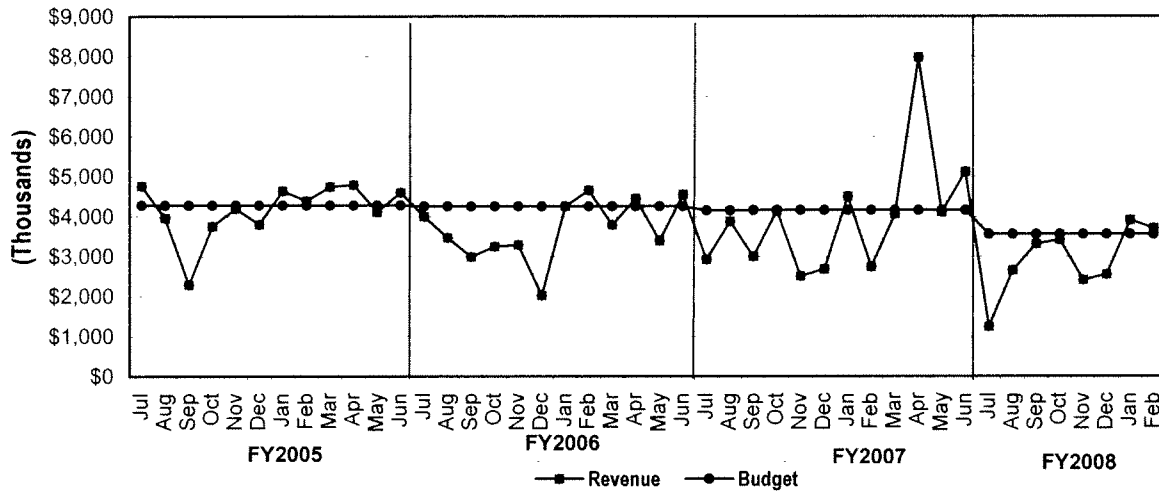
TREND INDICATORS - PARKING MANAGEMENT

Total Parking Management Revenue



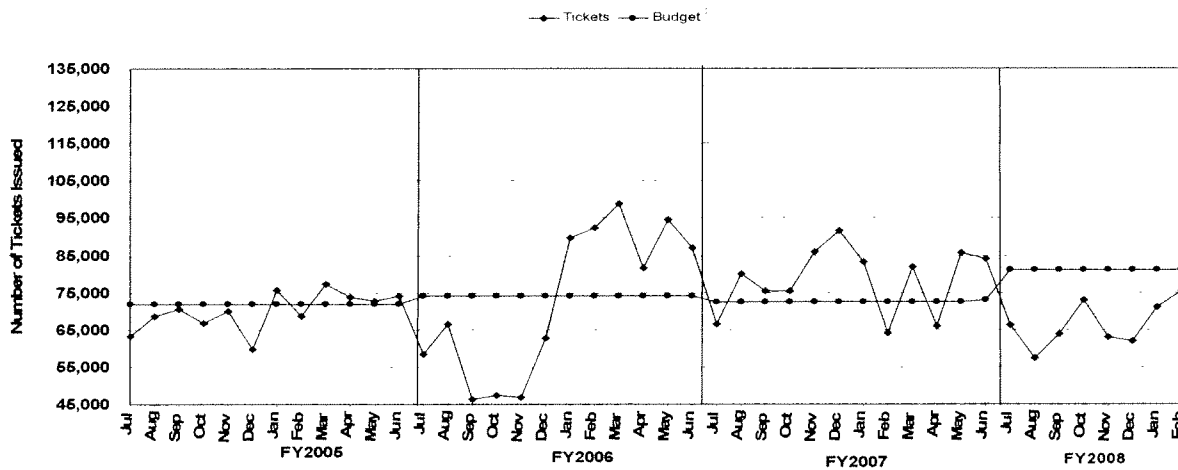
TREND INDICATORS - MUNICIPAL COURTS

Total Municipal Courts Revenue



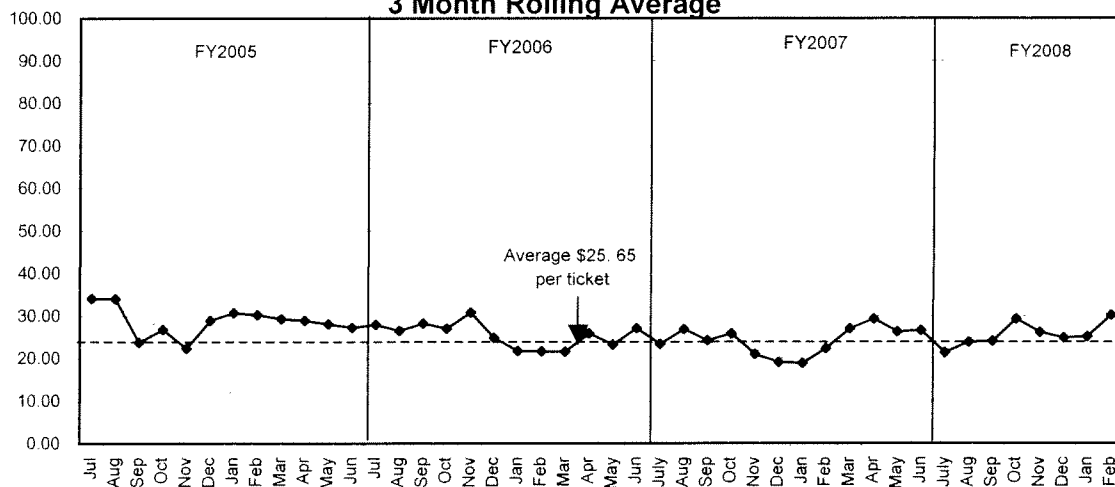
FY2008 does not include Parking Revenue which is now reported in the Parking Management Fund.

Number of Traffic Citations Issued



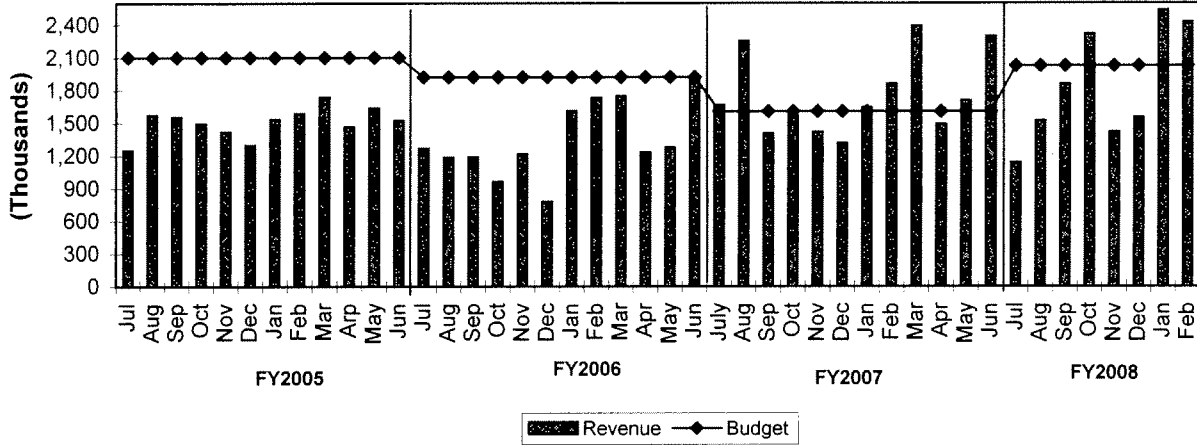
Note: Tickets issued primarily by the Houston Police

Moving Violations Revenue Per Ticket Issued (427010) 3 Month Rolling Average

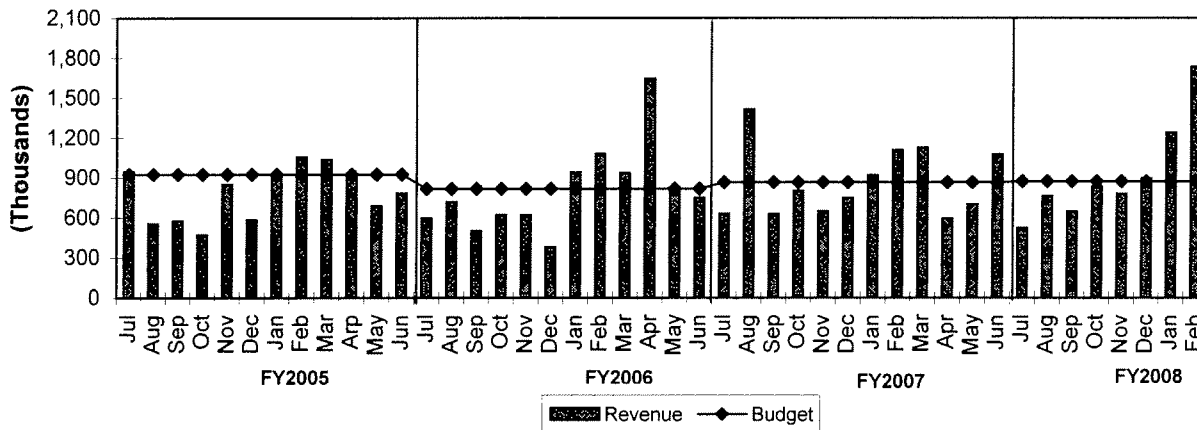


TREND INDICATORS - MUNICIPAL COURTS

Moving Violations Collections vs Budget

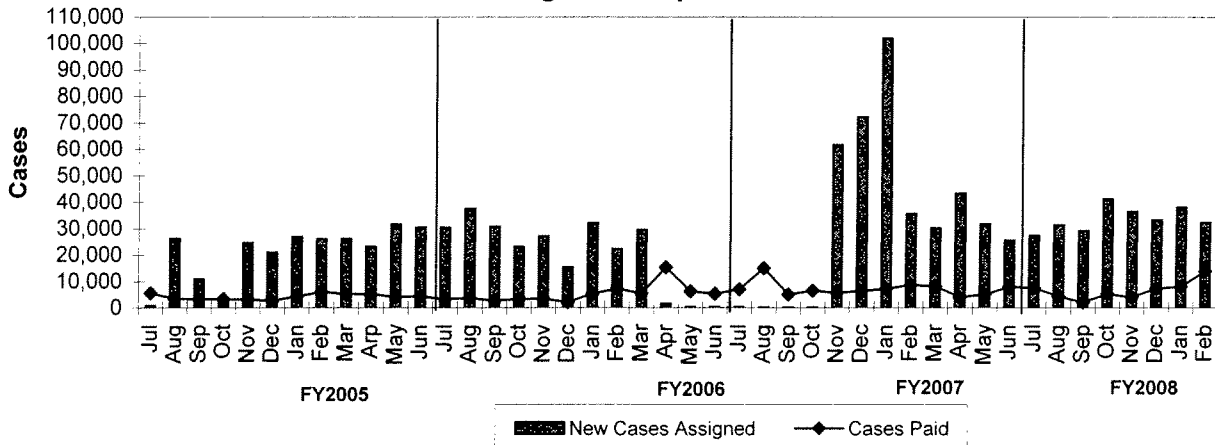


Total Delinquent Collections vs Budget*



*Net of fees and expenses paid to Linebarger

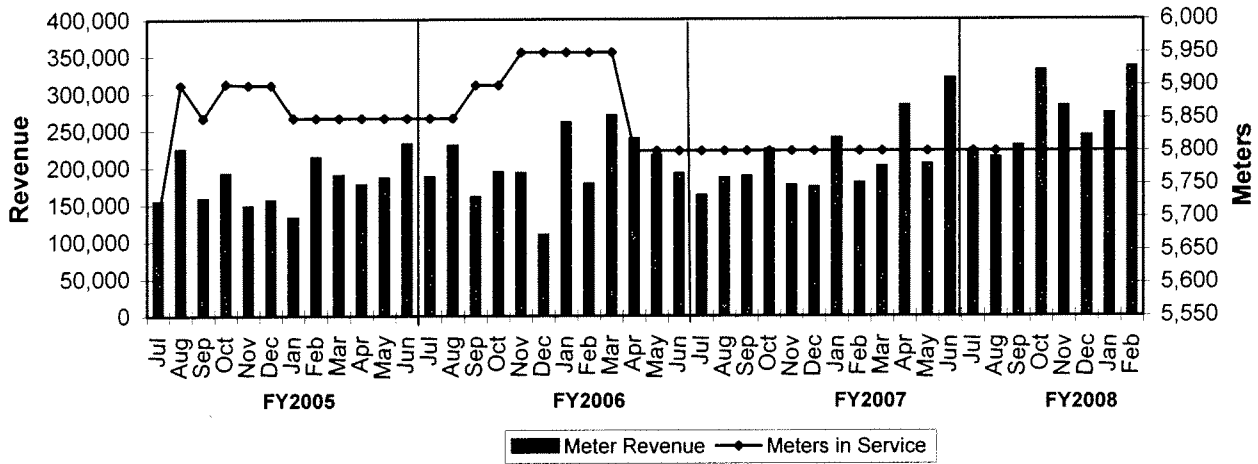
Traffic, Non-Traffic & Failure to Appear Linebarger Delinquent Collection Rates



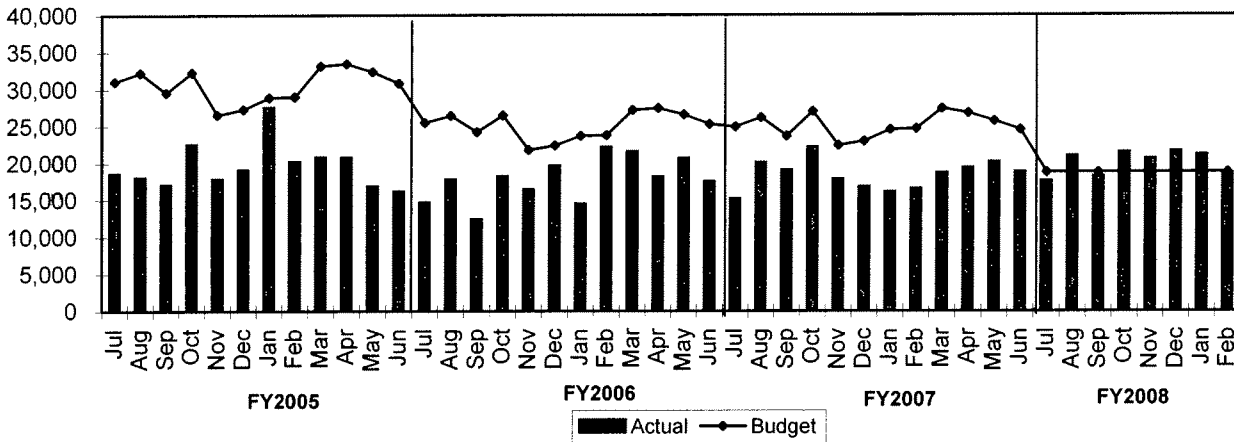
*Excludes Delinquent Parking Collections

TREND INDICATORS - MUNICIPAL COURTS

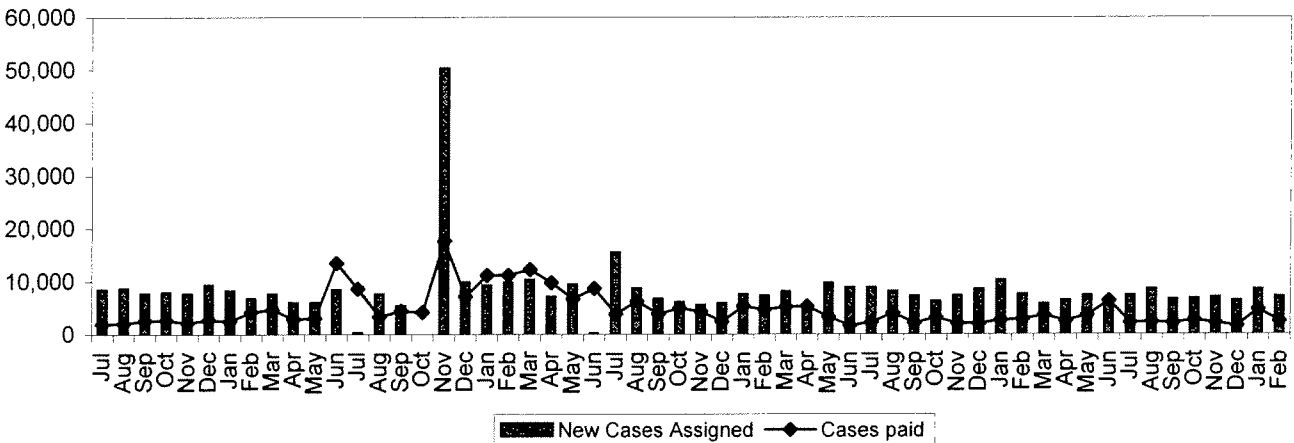
Meter Revenue vs # Meters in Service



Parking Violations vs Budget

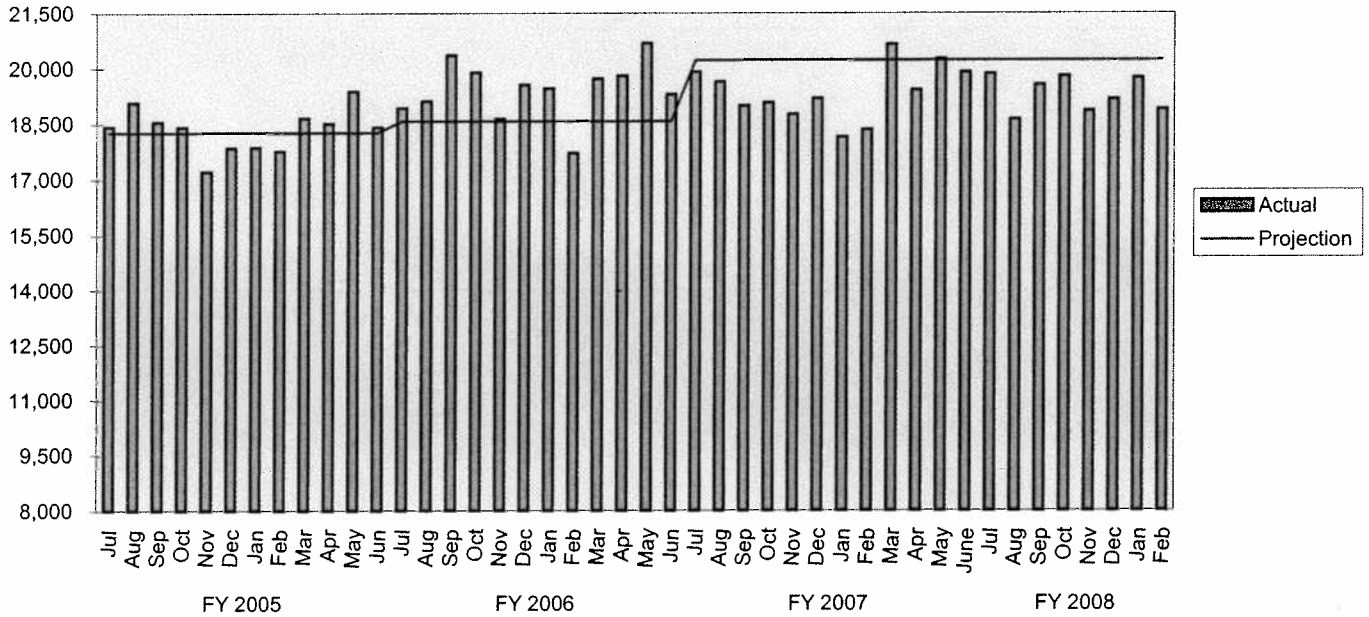


Parking Meter Violations Lineberger Delinquent Collections Rate

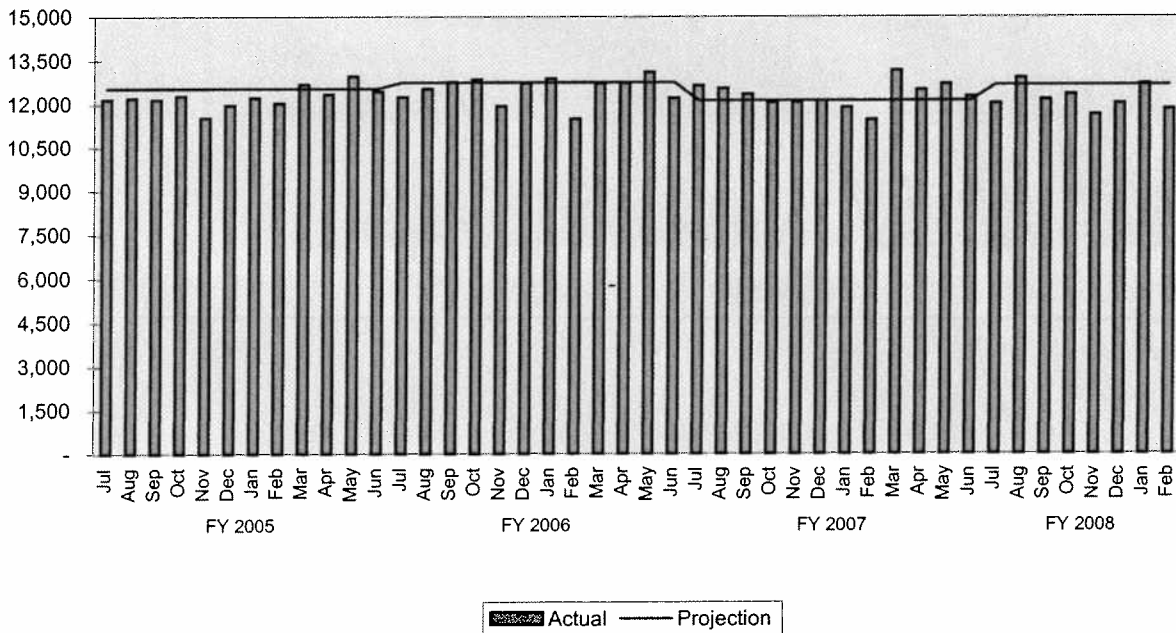


TREND INDICATORS - AMBULANCE SERVICES

EMS Incidents

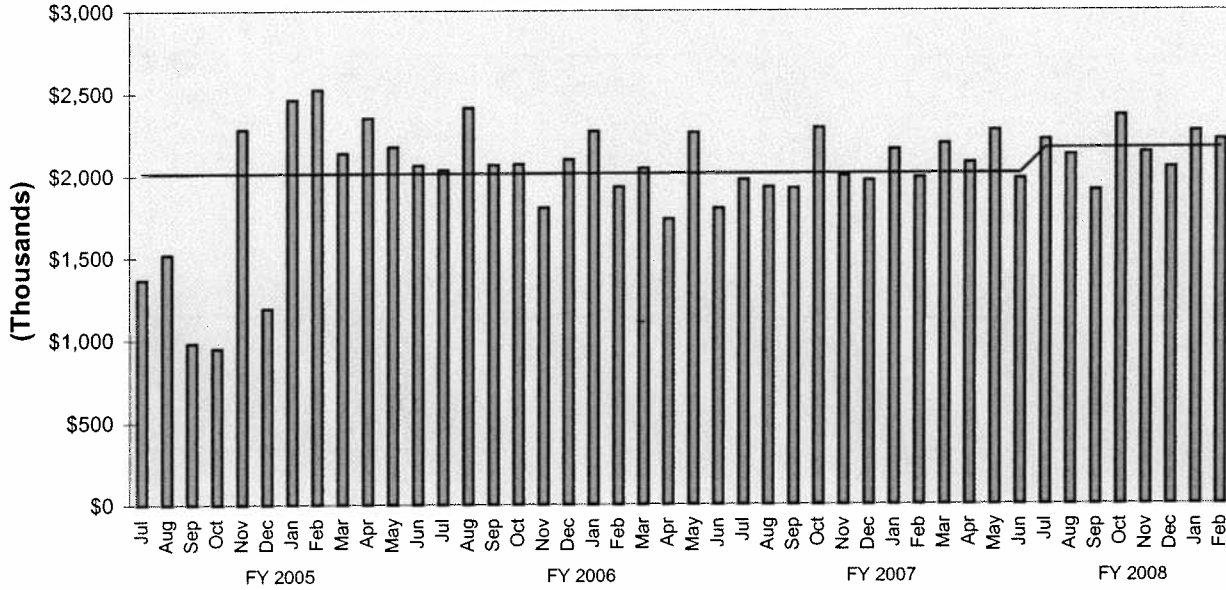


EMS Transports



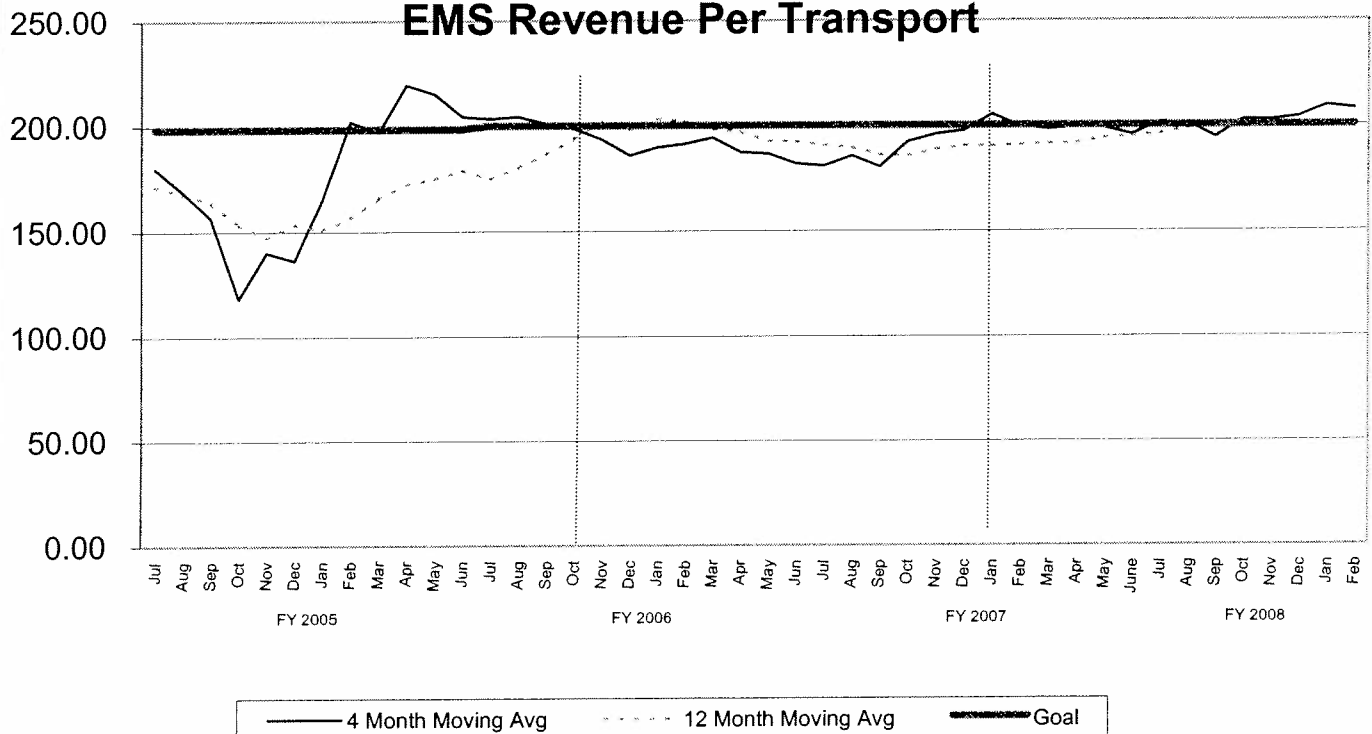
TREND INDICATORS - AMBULANCE SERVICES

EMS Revenue (Net Collections **)

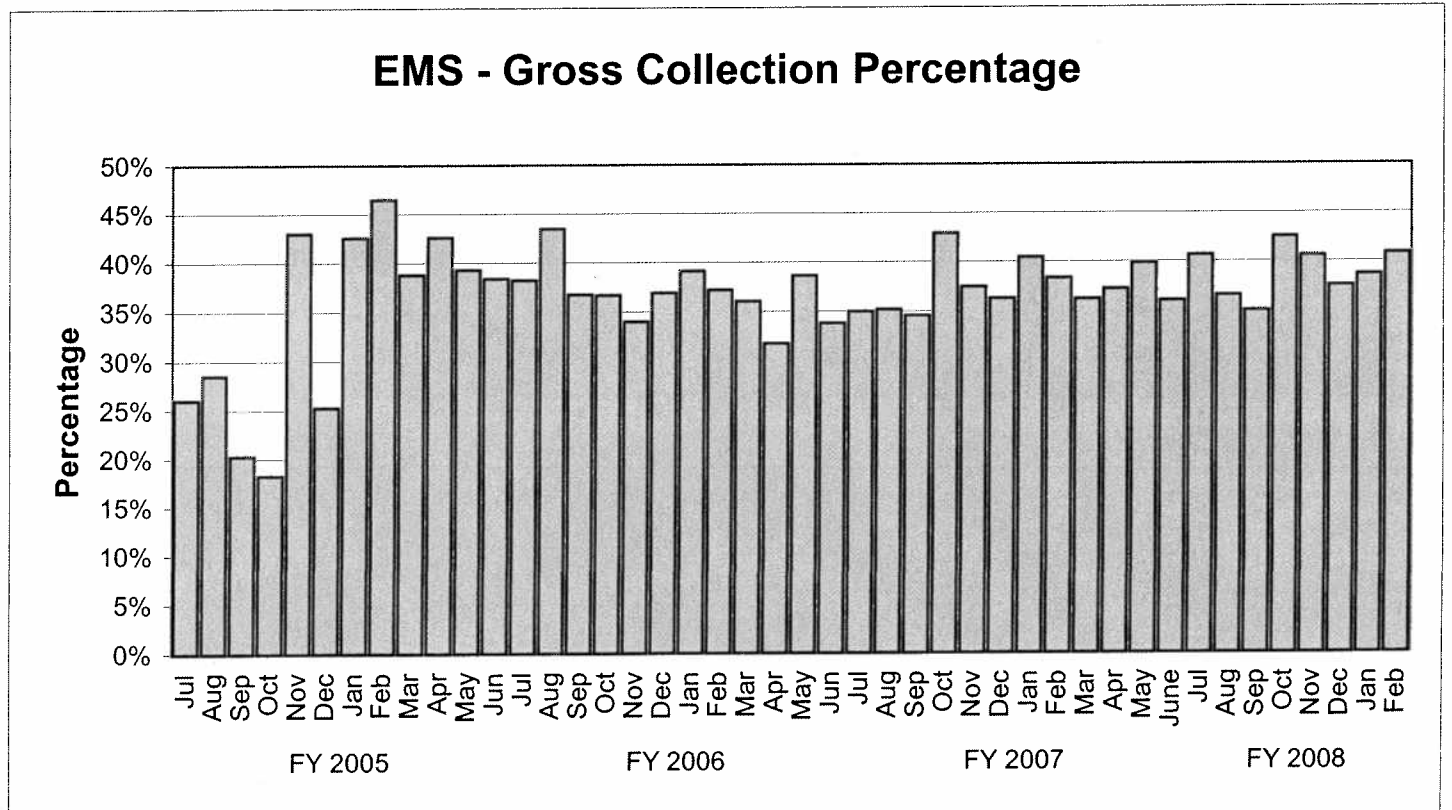
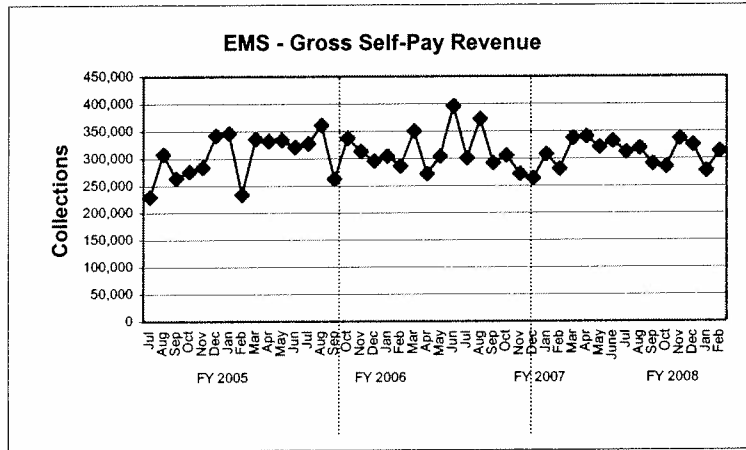
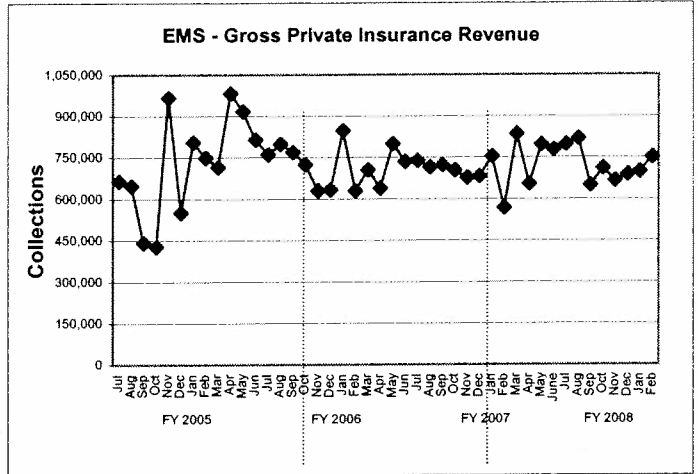
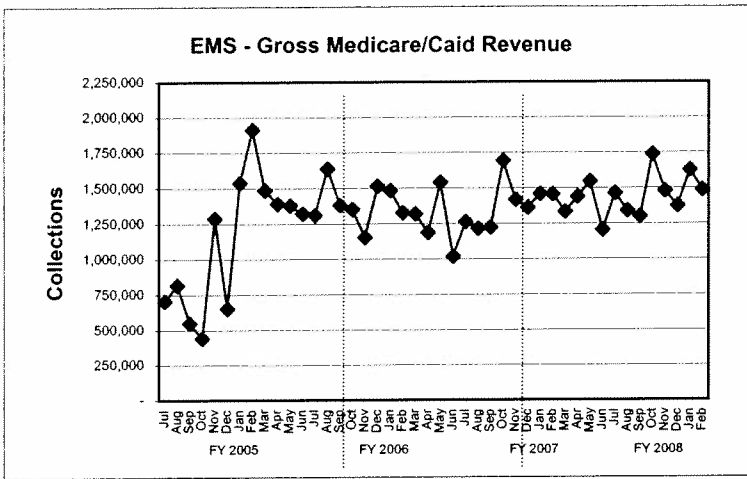


** The net collections for December 07 through February were computed using a 12-month average of the Contractor's Invoice

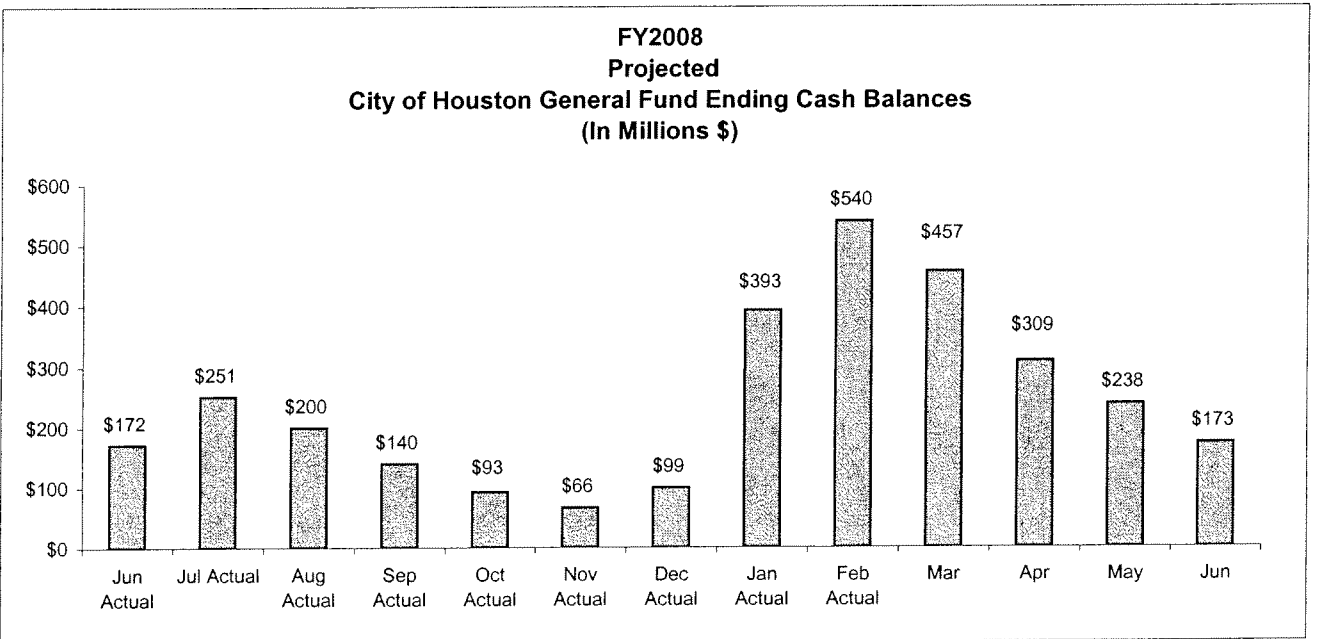
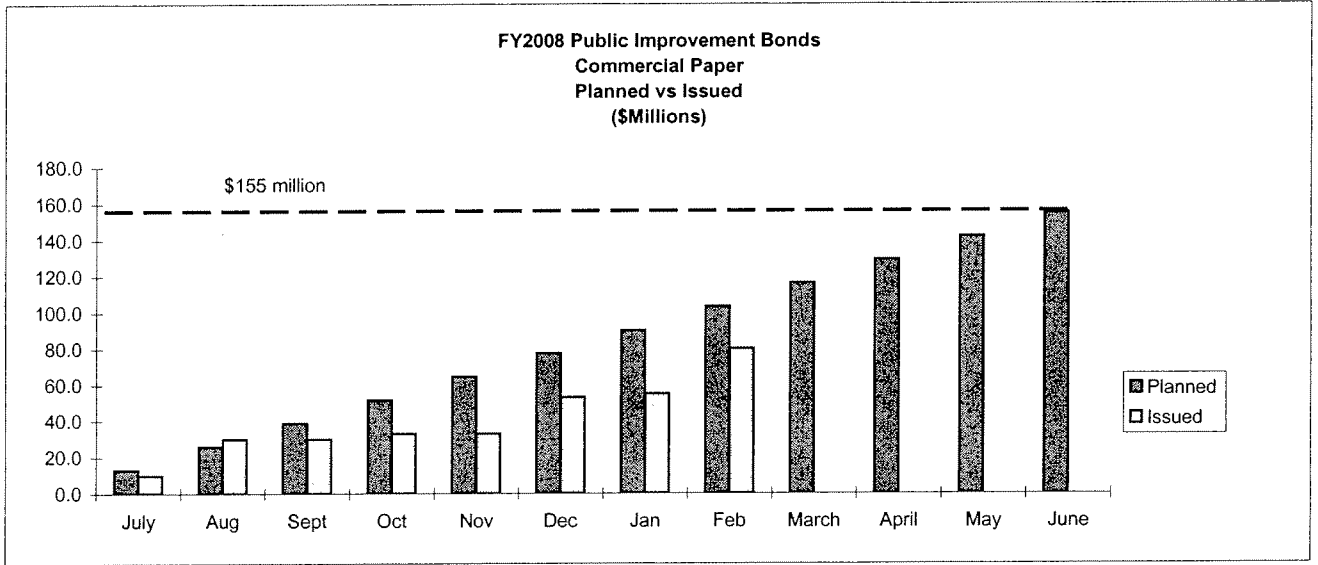
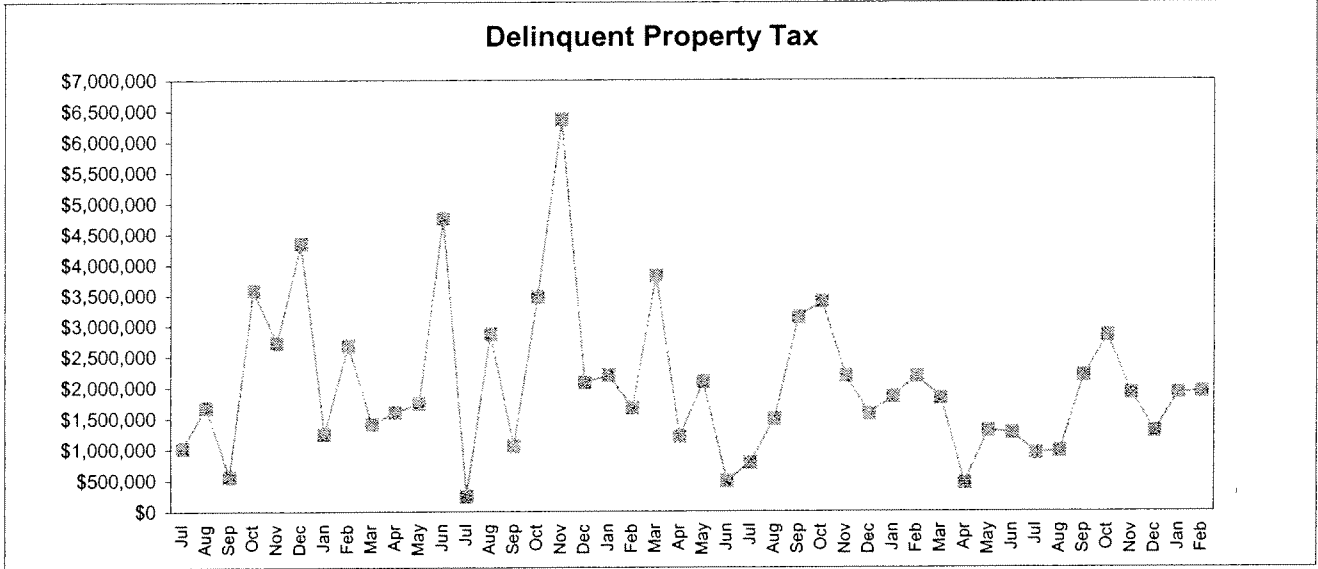
4 Month and 12 Month Moving Average EMS Revenue Per Transport



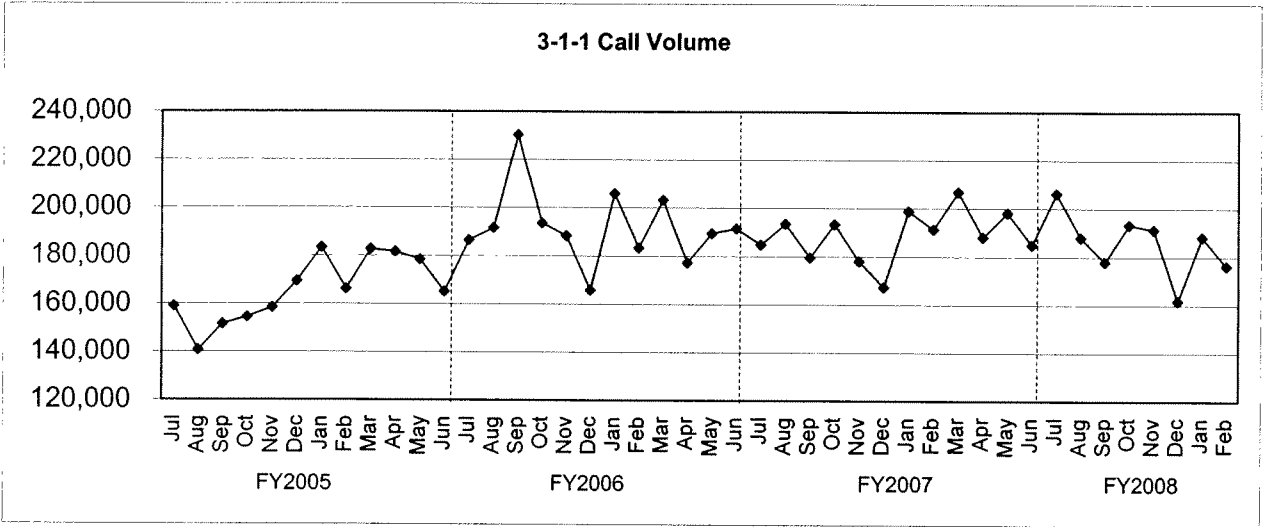
TREND INDICATORS - AMBULANCE SERVICES



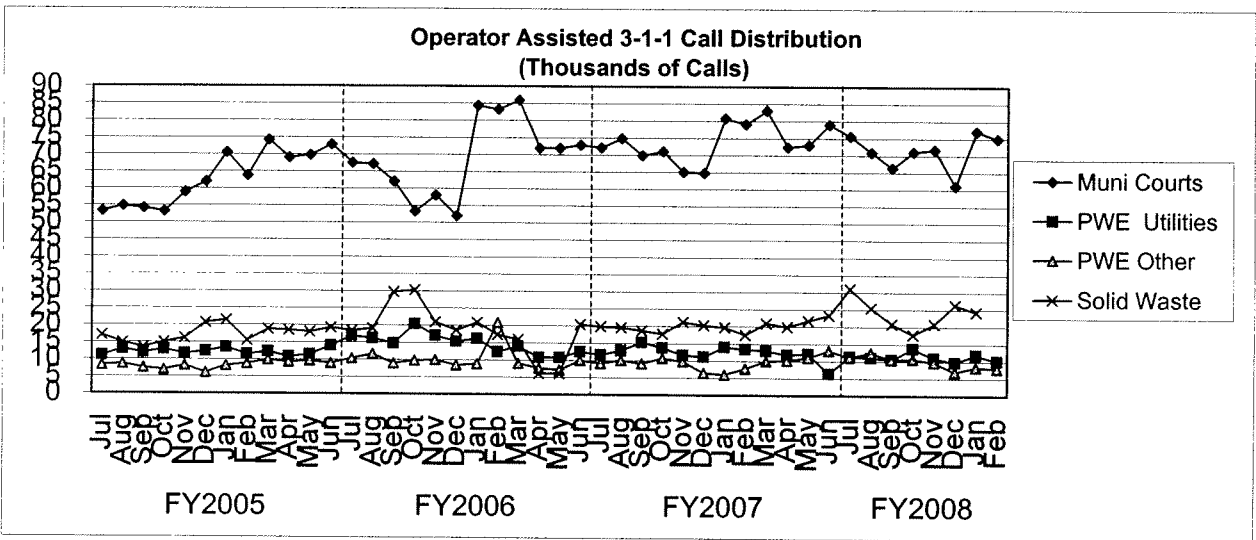
TREND INDICATORS - MISCELLANEOUS



TREND INDICATORS - MISCELLANEOUS



3-1-1 became fully operational in August 2001



4 largest users of operator assisted 3-1-1 calls.