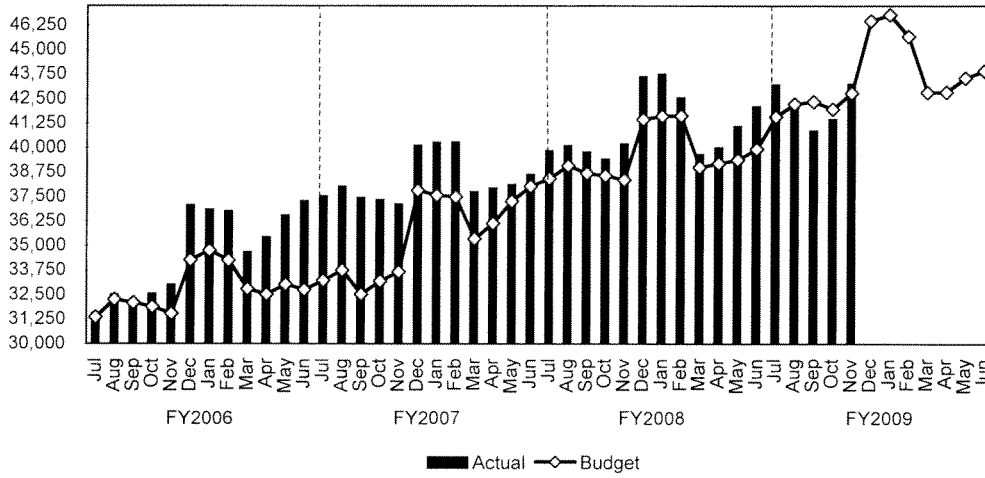


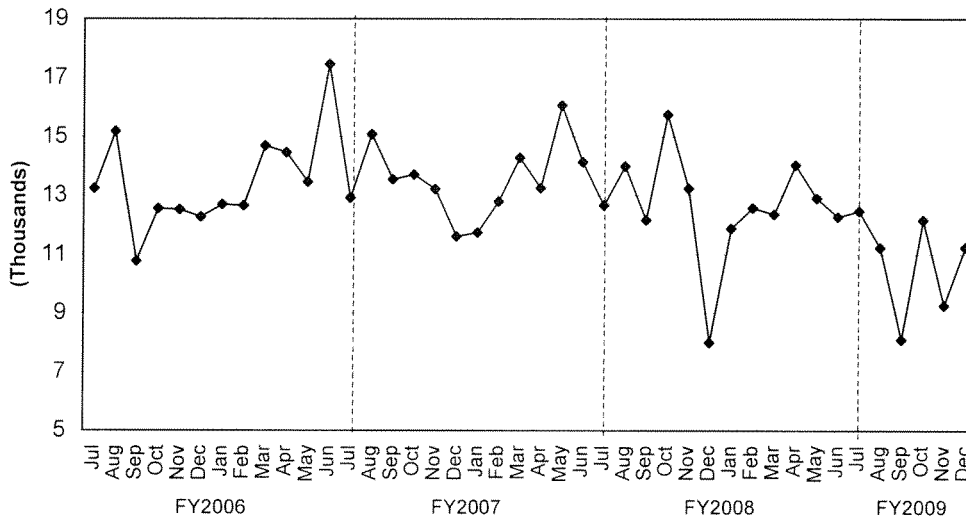
TREND INDICATORS - LOCAL ECONOMY

Sales Tax - Three-Month Rolling Average



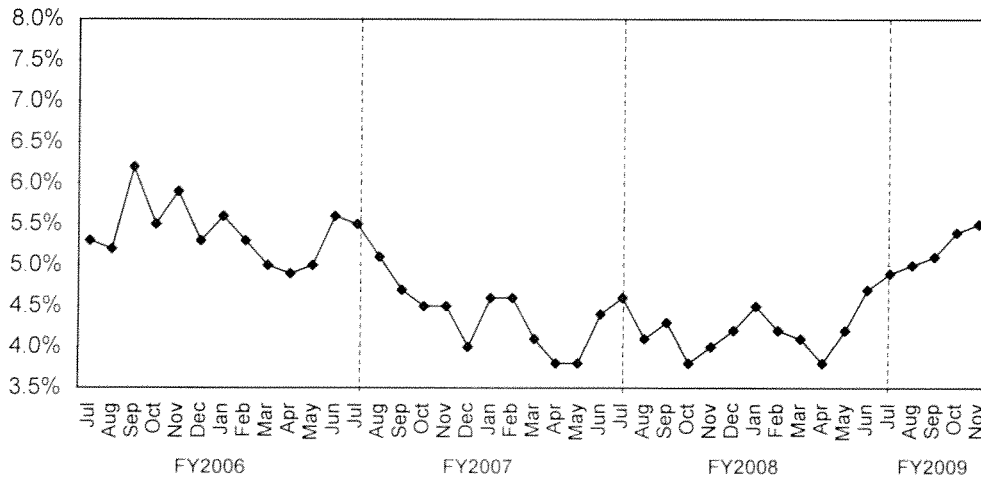
Source: Office of State Comptroller

Building Permits Issued



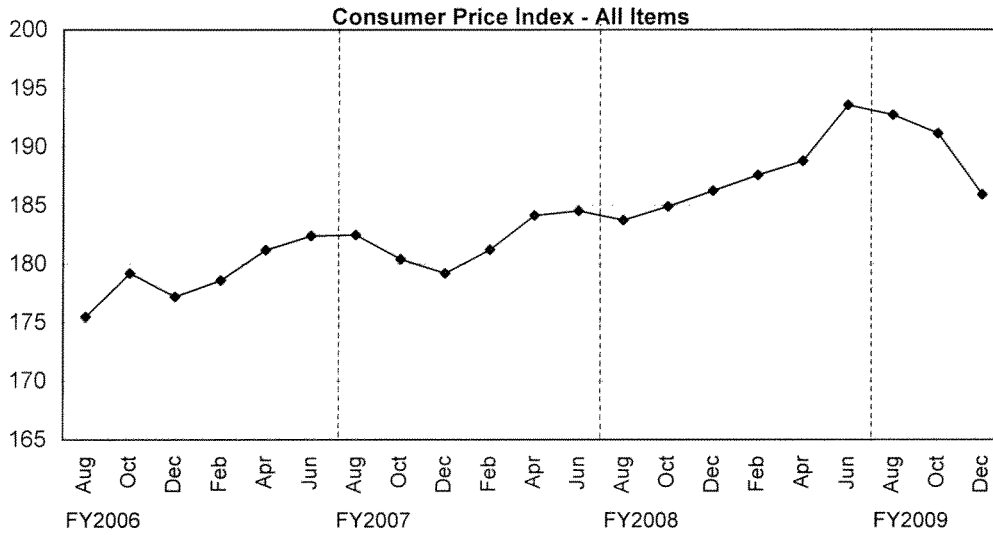
Source: City of Houston Planning and Development Department

Unemployment Rate

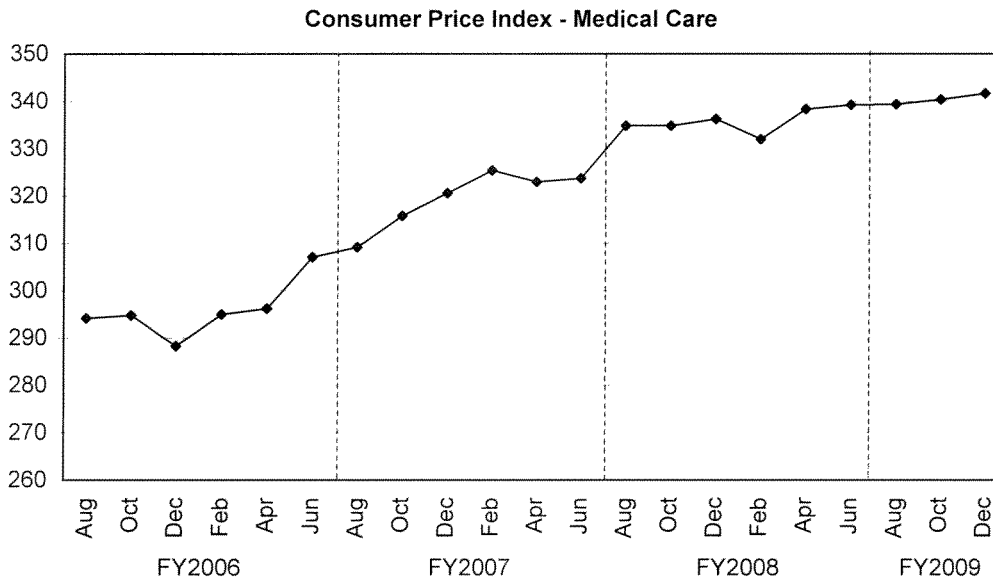


Source: Databook Houston; University of Houston Center for Public Policy; not seasonally adjusted

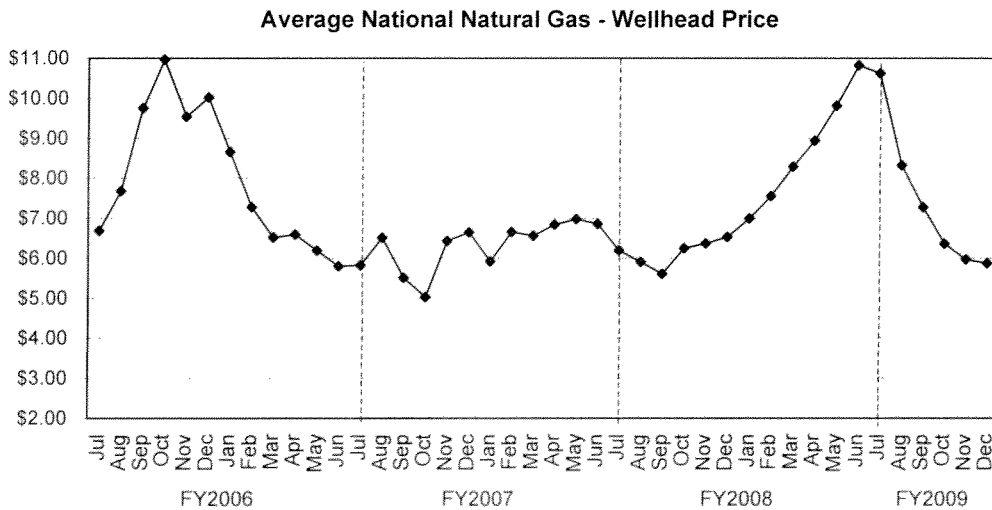
TREND INDICATORS - LOCAL ECONOMY



Source: Bureau of Labor Statistics - Houston, Galveston, Brazoria TX

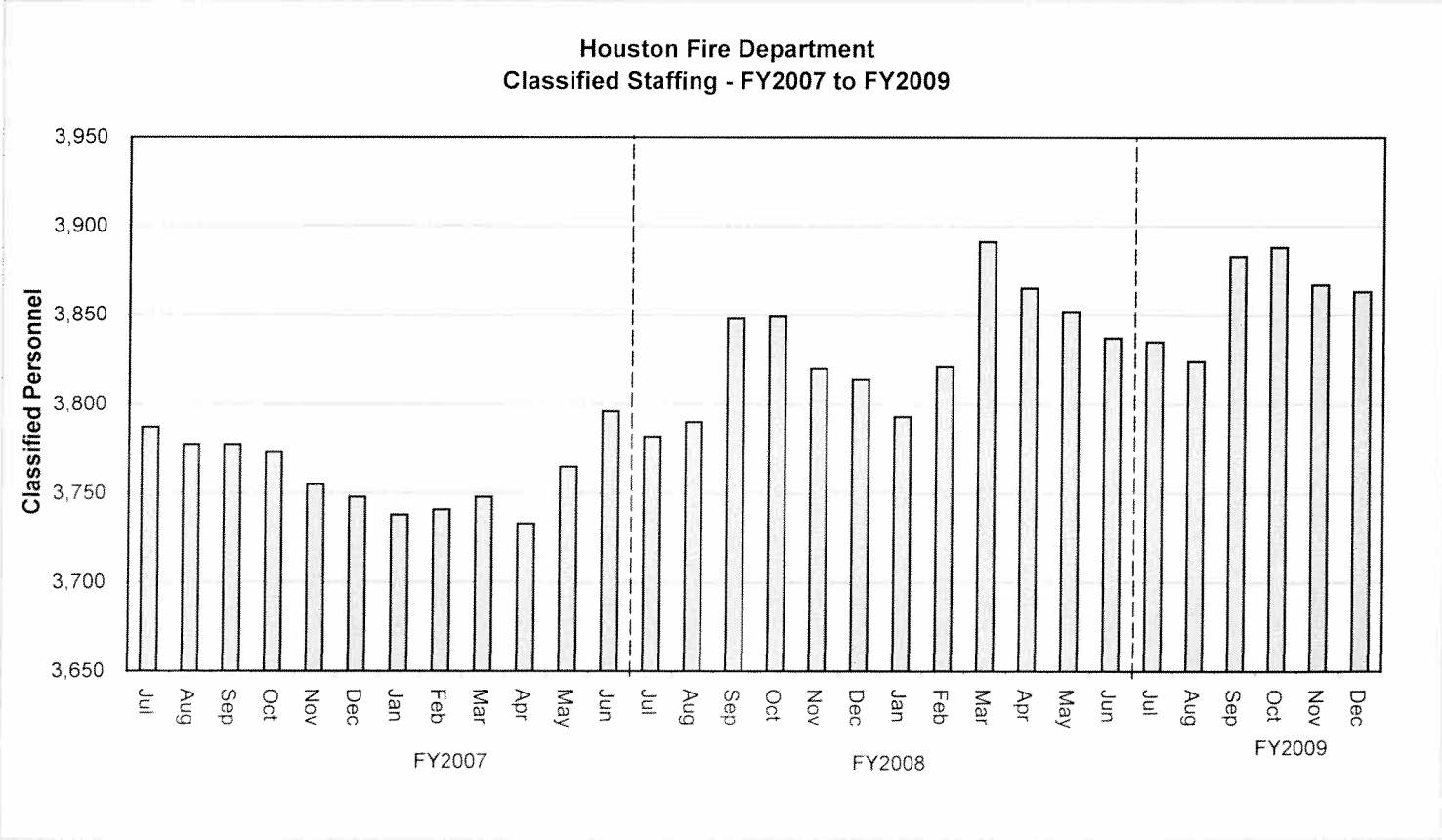
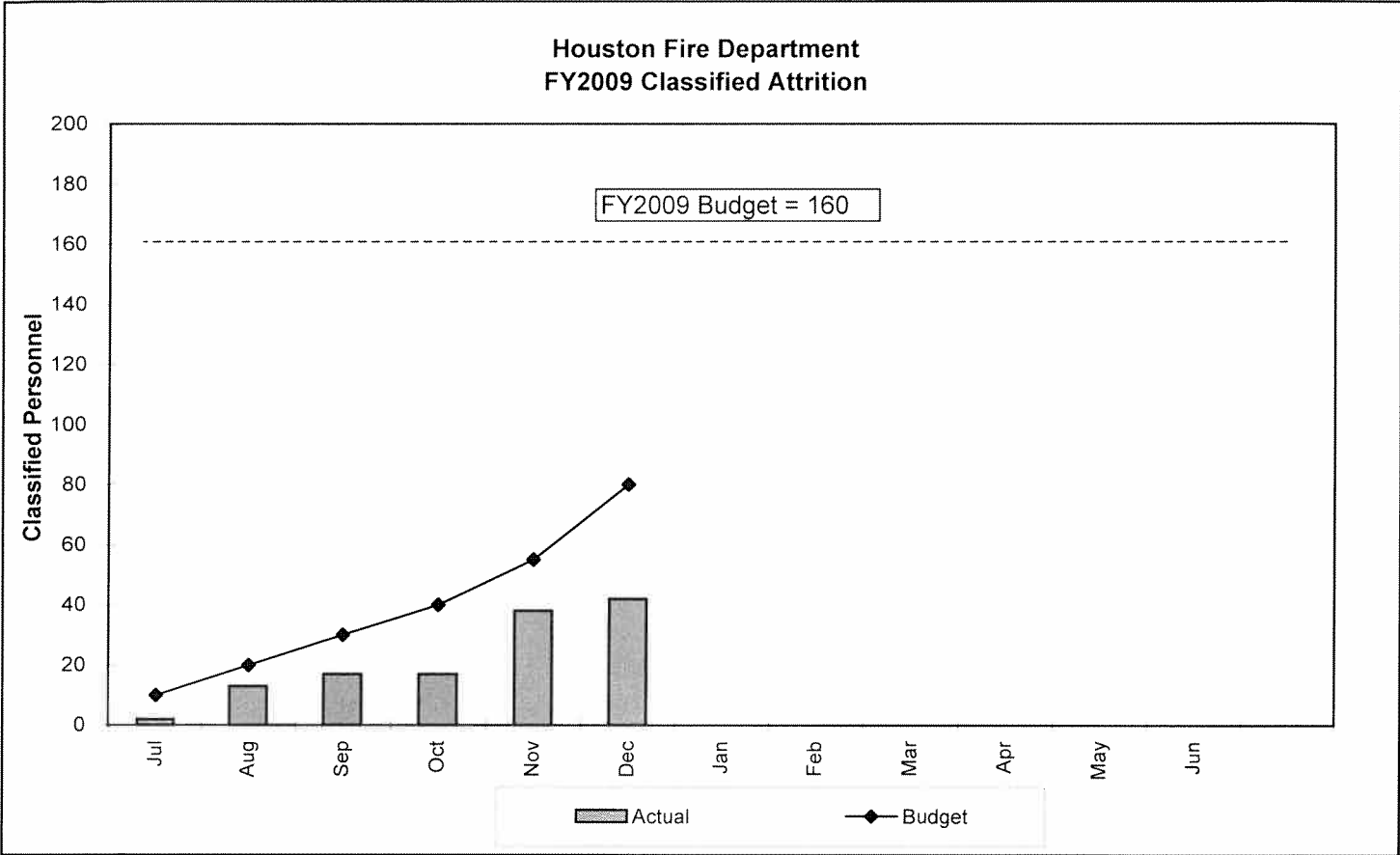


Source: Bureau of Labor Statistics - Houston, Galveston, Brazoria TX



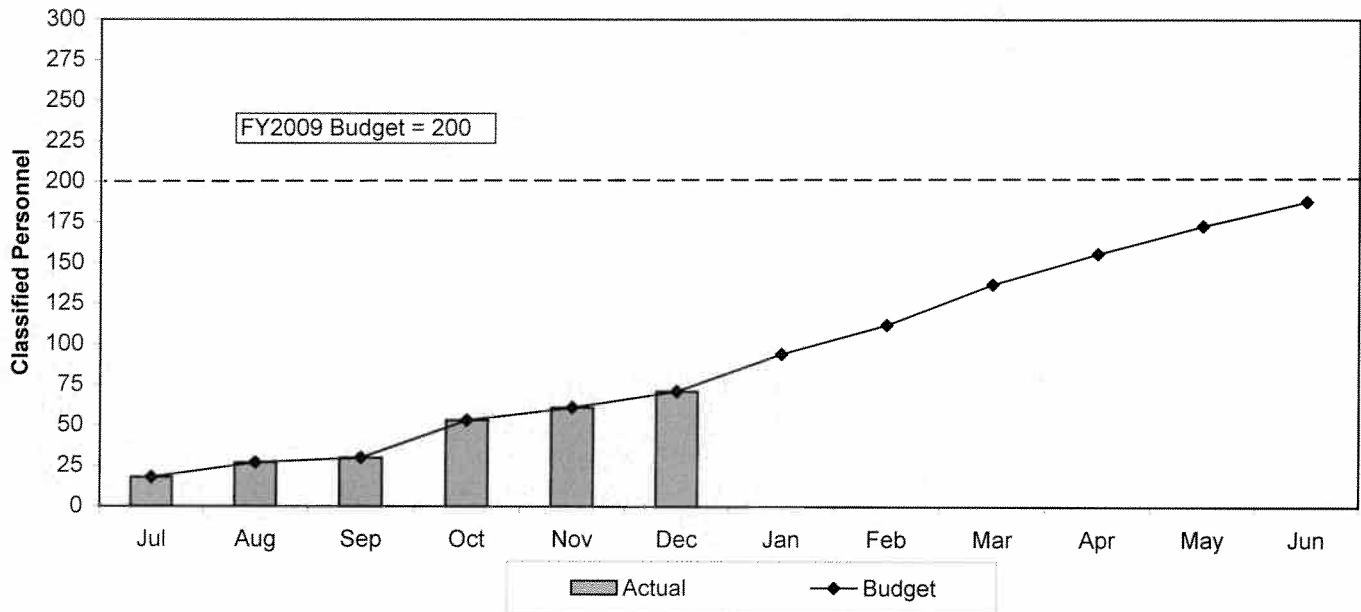
Source: Energy Information Administration/Natural Gas Monthly

TREND INDICATORS - RETIREMENTS

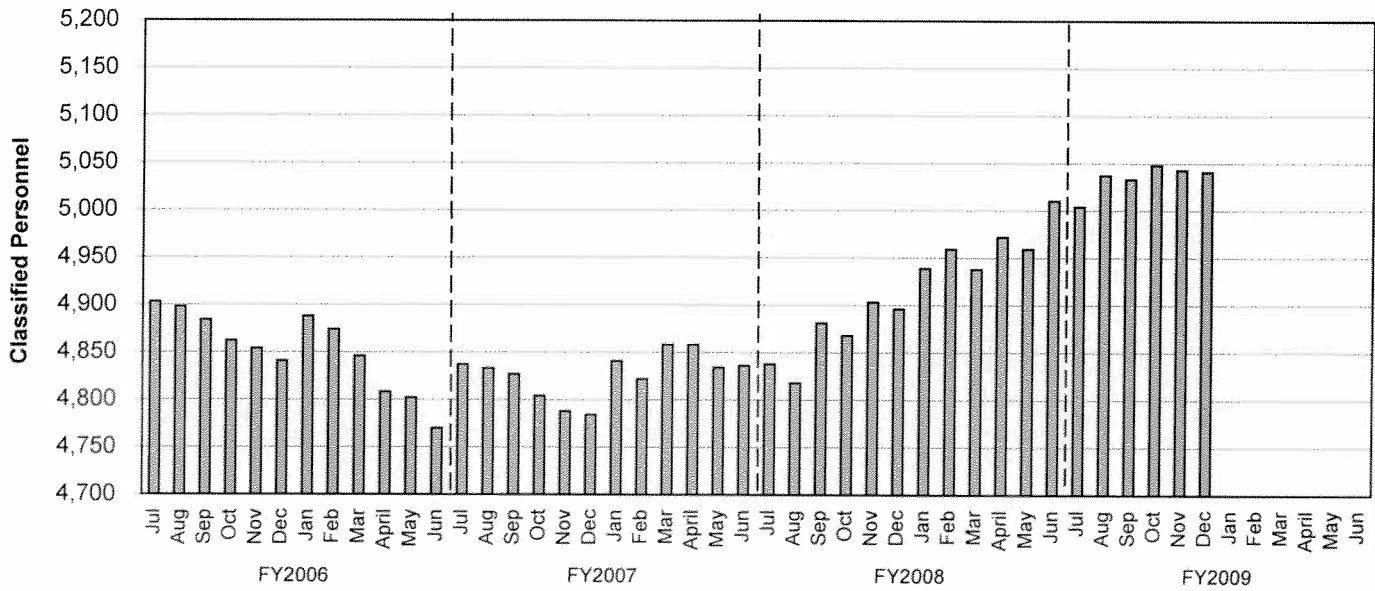


TREND INDICATORS - HIRING AND RETIREMENTS

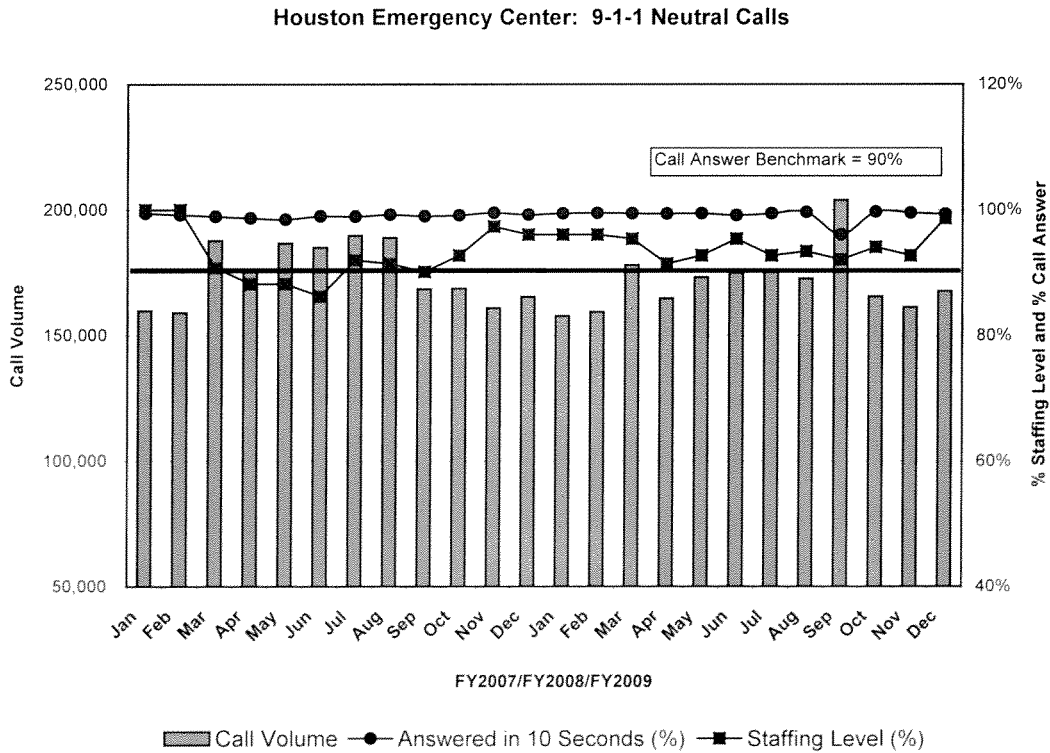
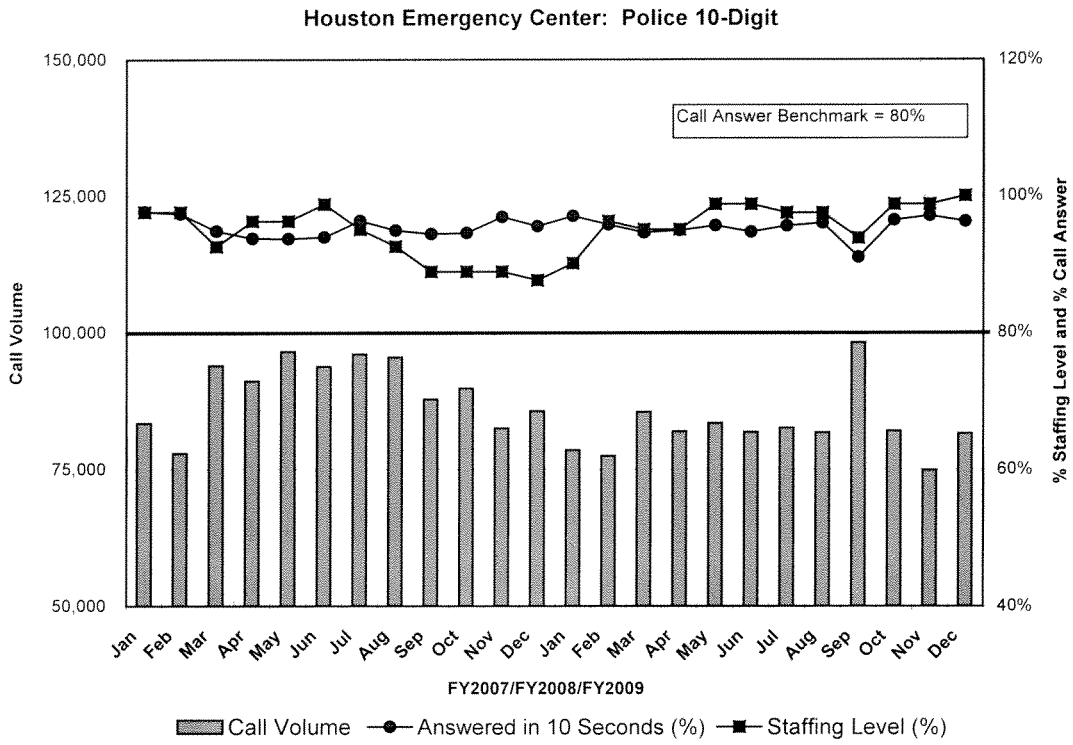
**Houston Police Department
FY2009 Classified Attrition**



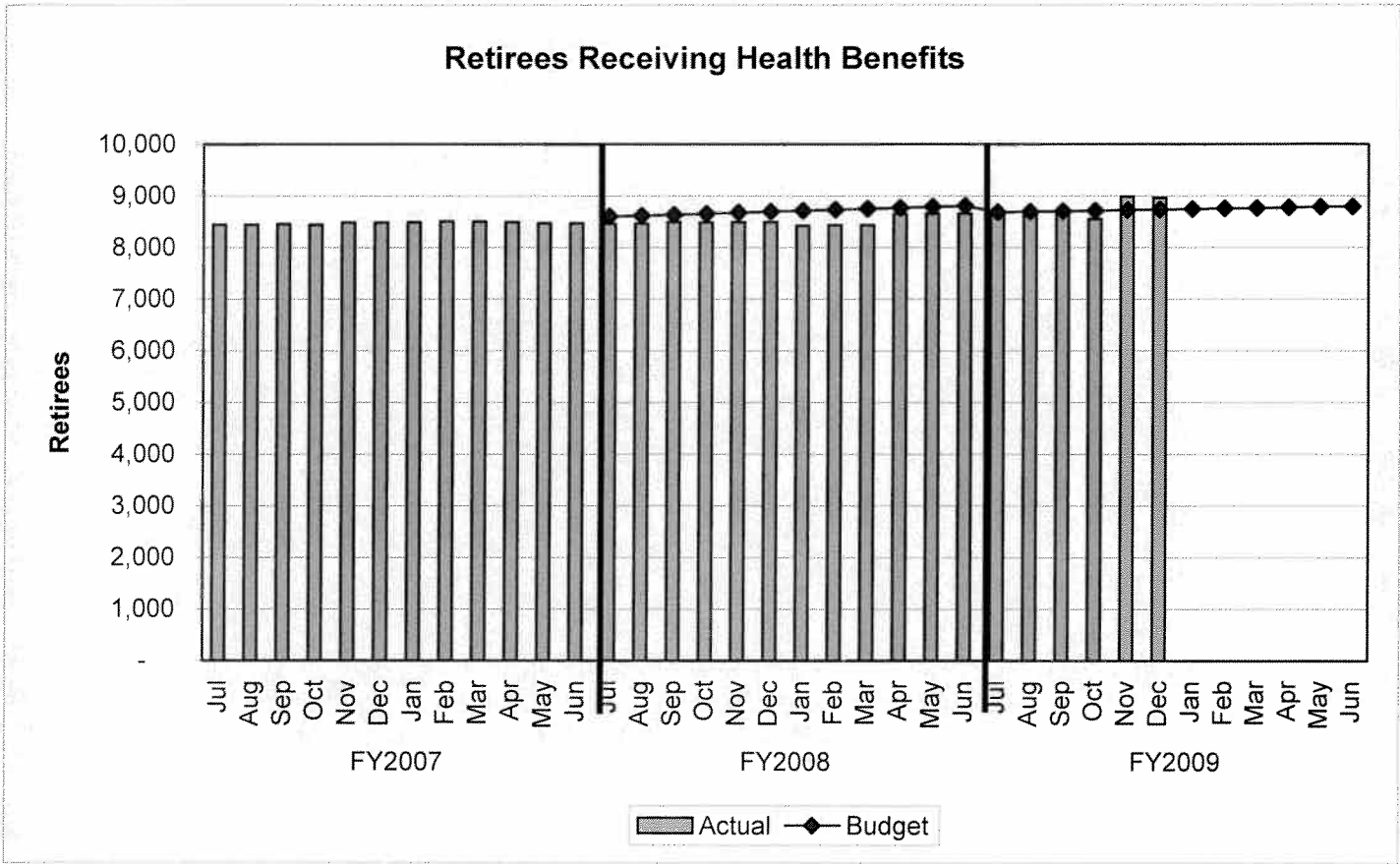
**Houston Police Department
Classified Staffing - FY2006 to FY2009**



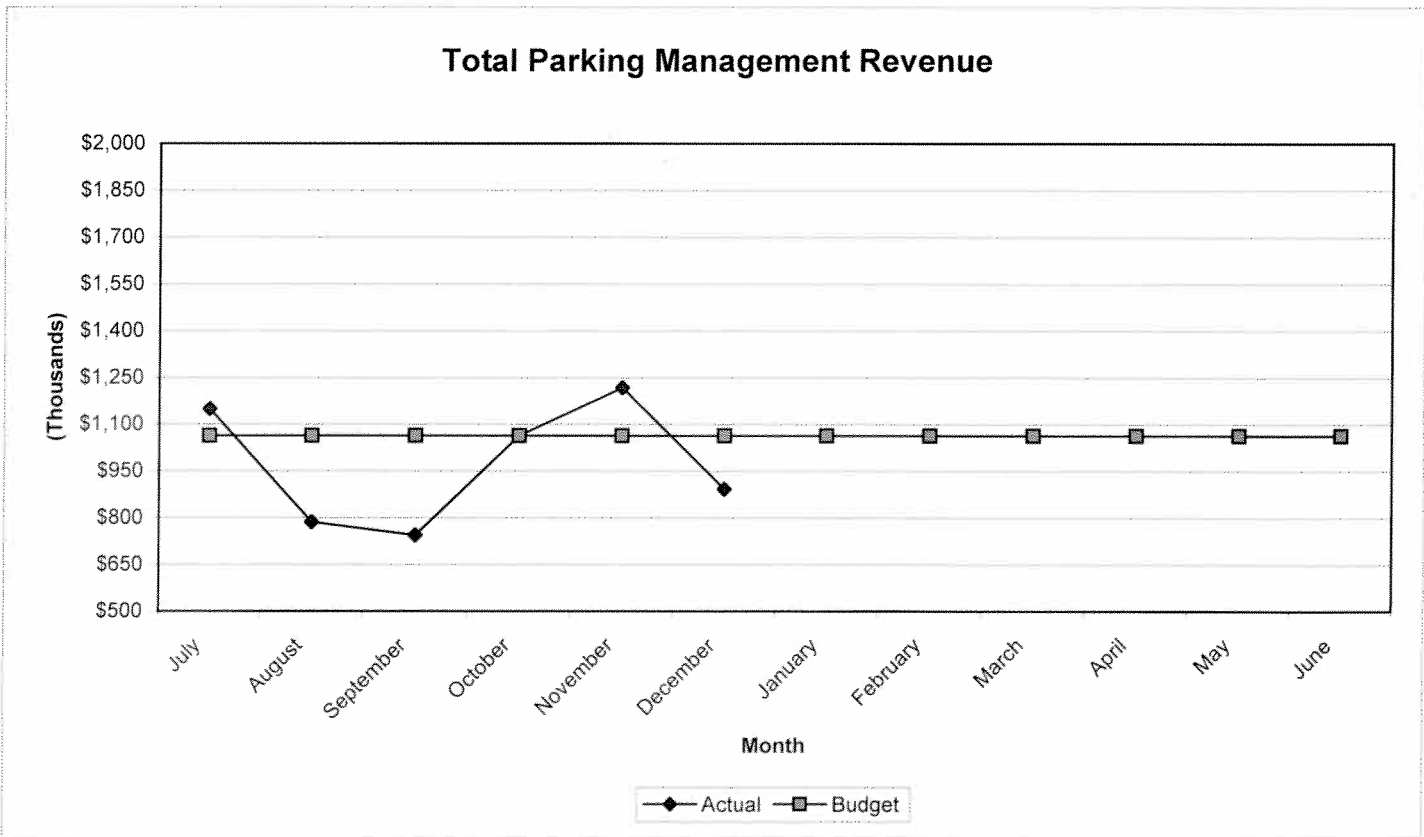
TREND INDICATORS - HOUSTON EMERGENCY CENTER



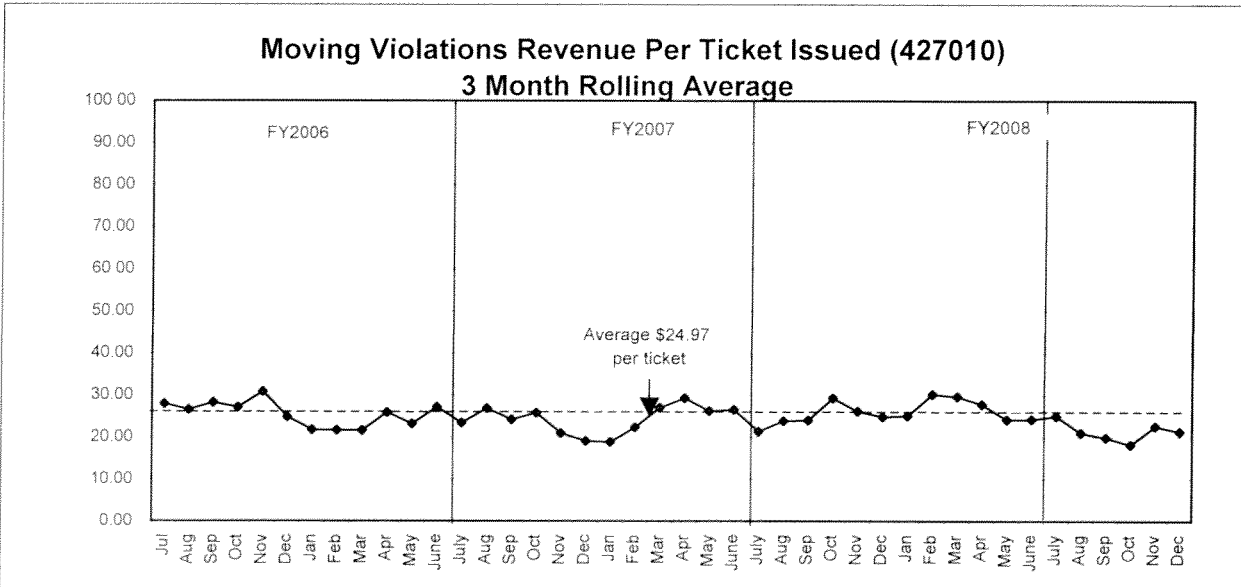
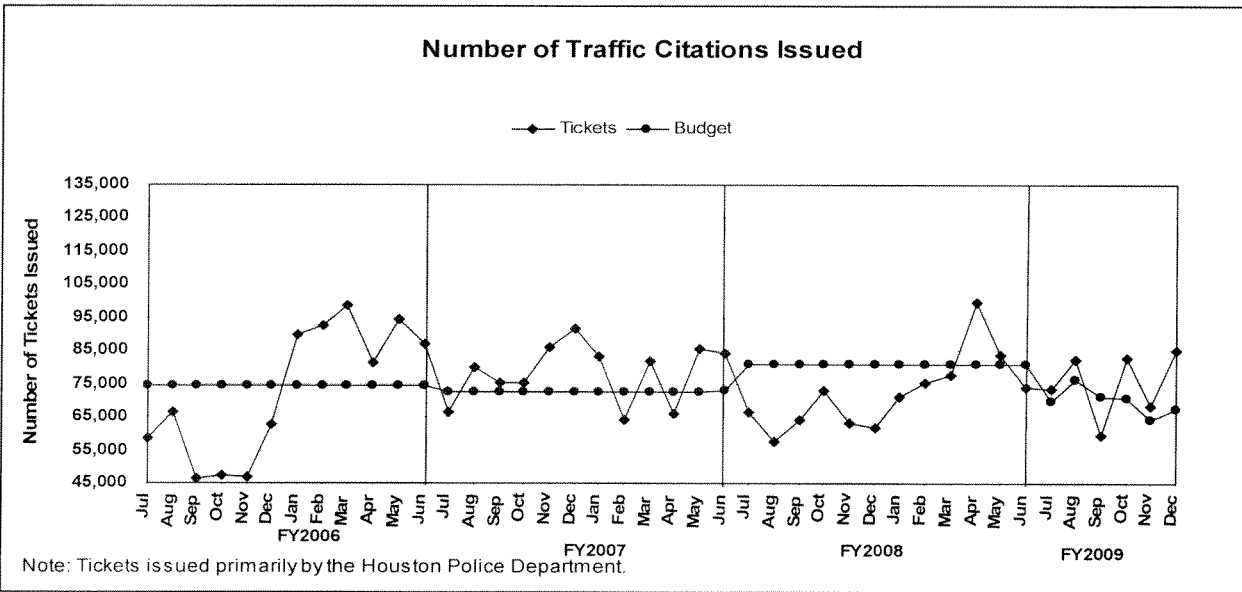
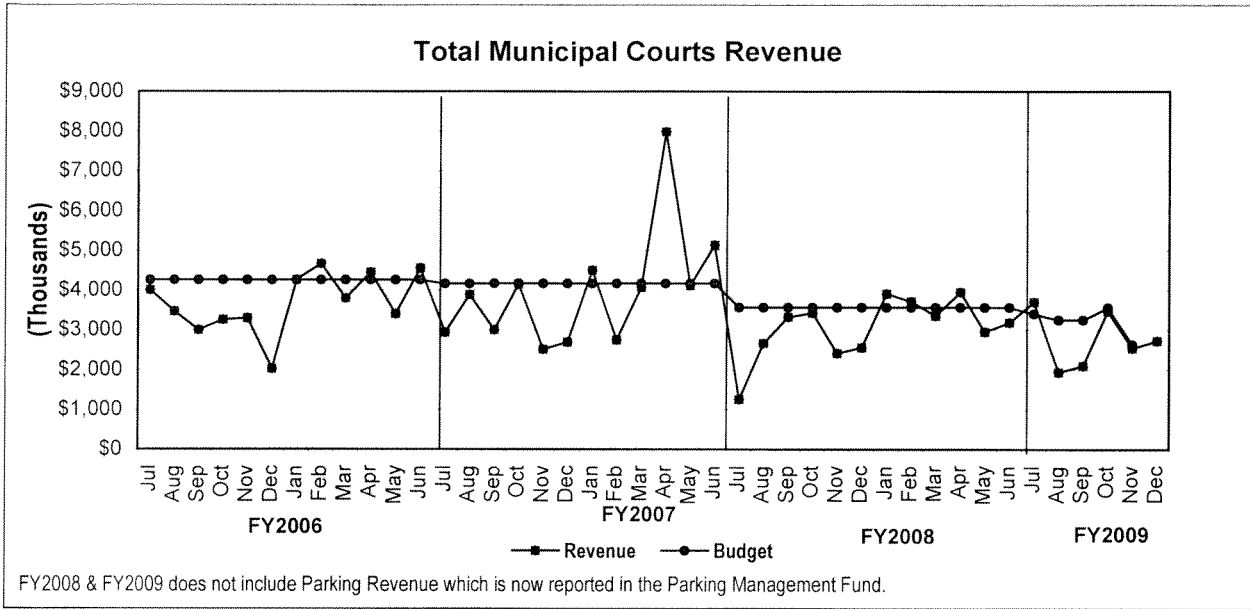
TREND INDICATORS - RETIREMENTS



TREND INDICATORS - PARKING MANAGEMENT

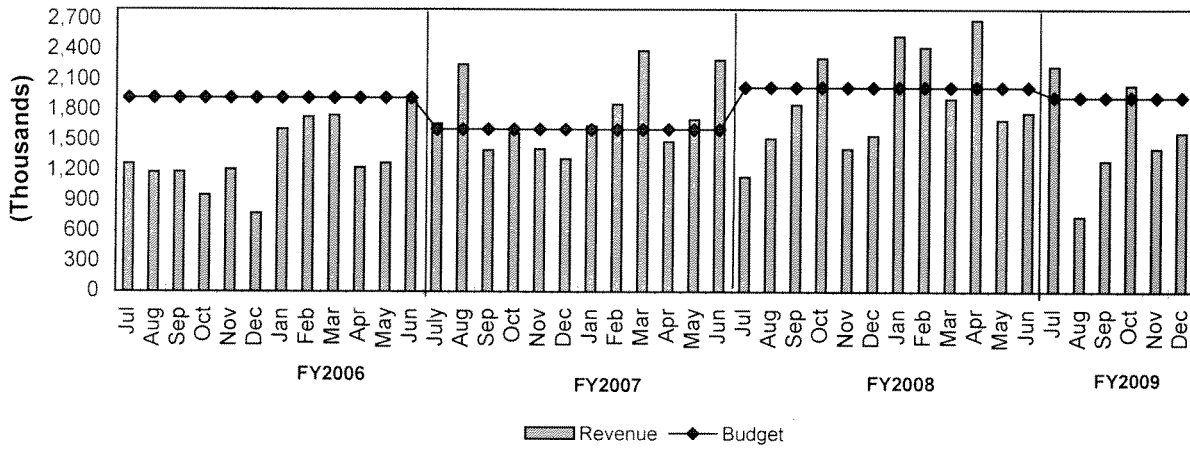


TREND INDICATORS - MUNICIPAL COURTS

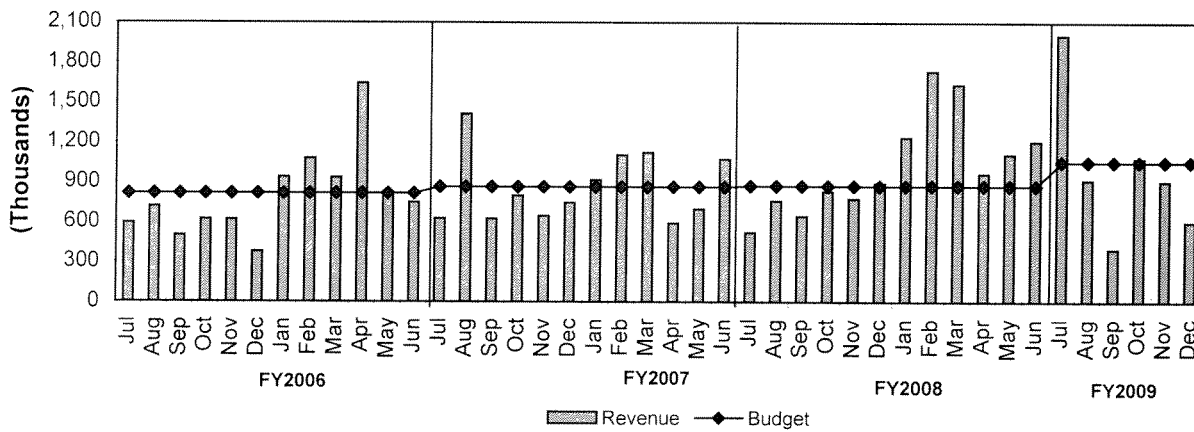


TREND INDICATORS - MUNICIPAL COURTS

Moving Violations Collections vs Budget

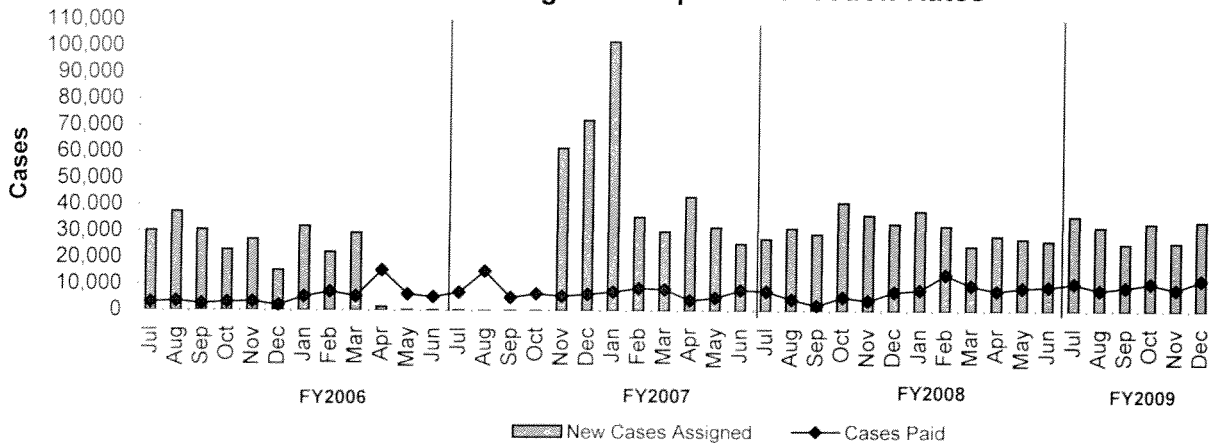


Total Delinquent Collections vs Budget*



*Net of fees and expenses paid to Linebarger

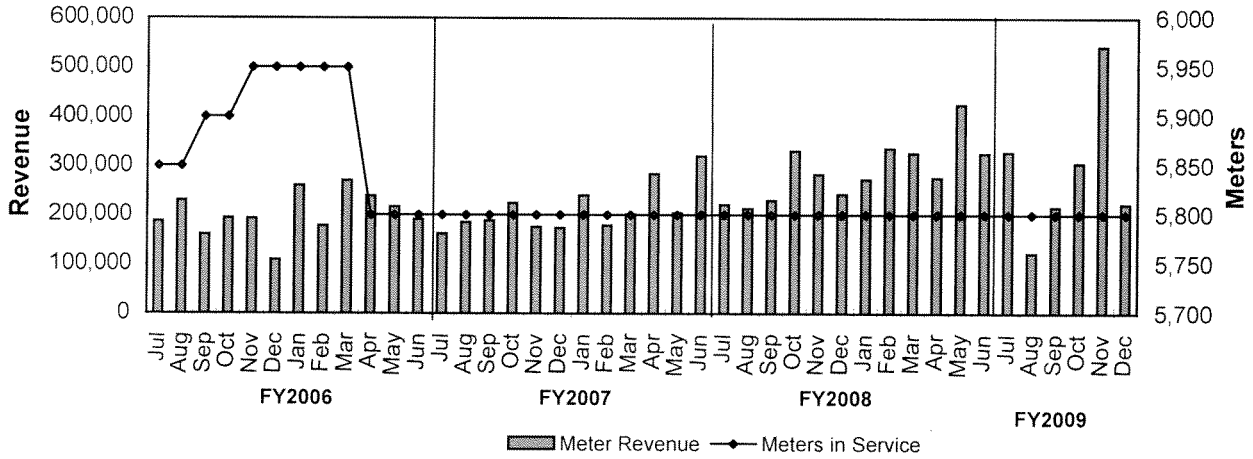
Traffic, Non-Traffic & Failure to Appear Linebarger Delinquent Collection Rates



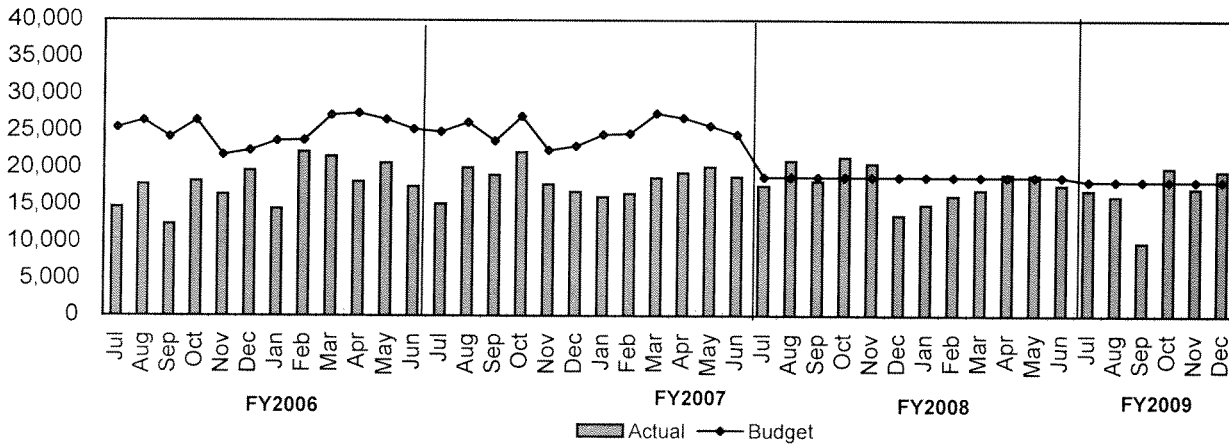
*Excludes Delinquent Parking Collections

TREND INDICATORS - MUNICIPAL COURTS

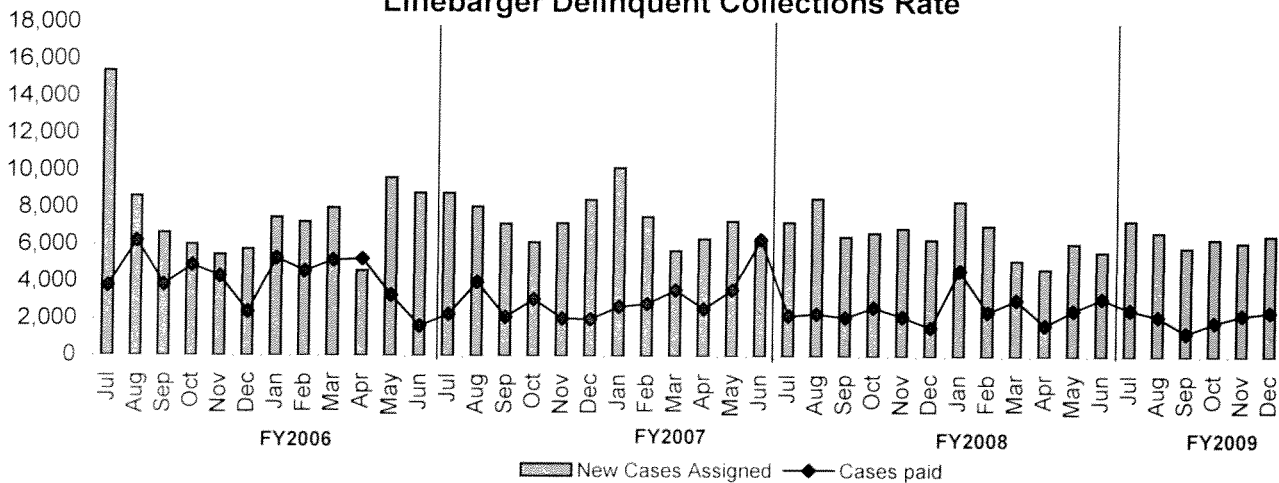
Meter Revenue vs # Meters in Service



Parking Violations vs Budget

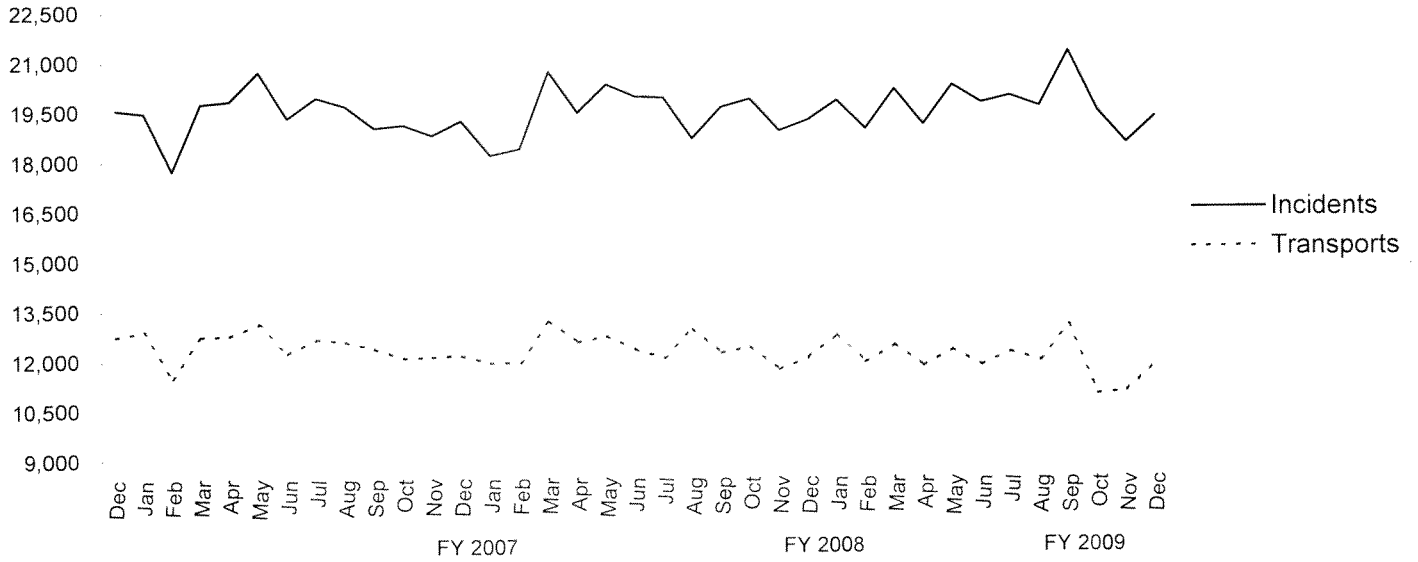


Parking Meter Violations Lineberger Delinquent Collections Rate

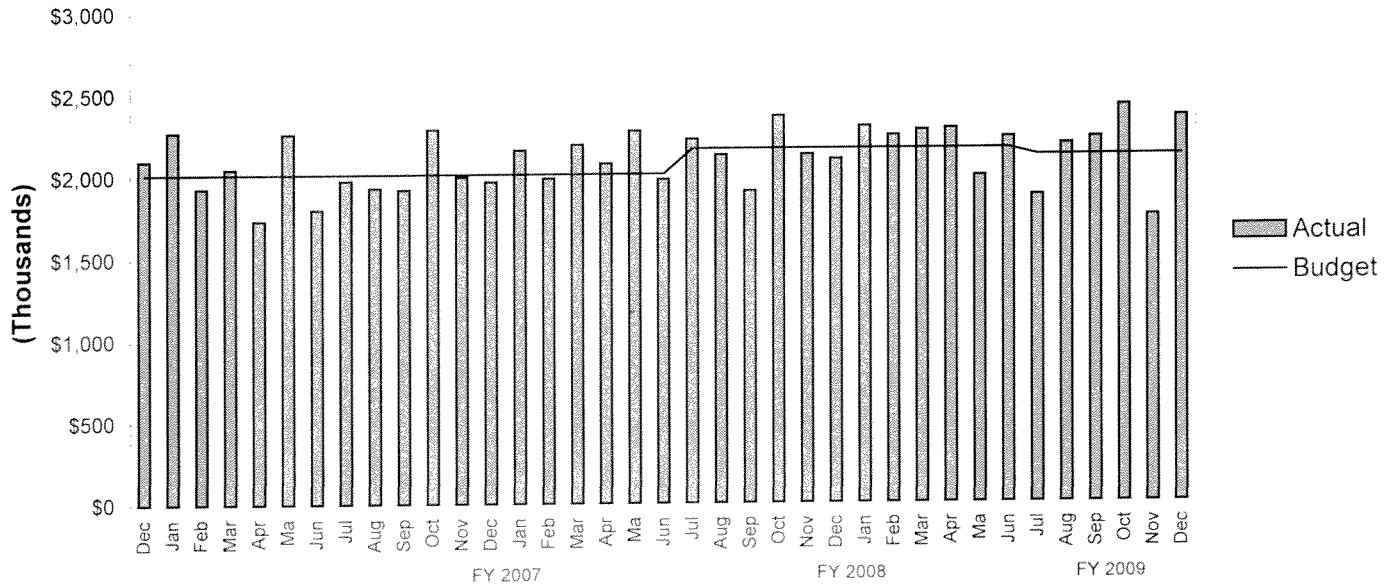


TREND INDICATORS - AMBULANCE SERVICES

EMS Incidents and Transports



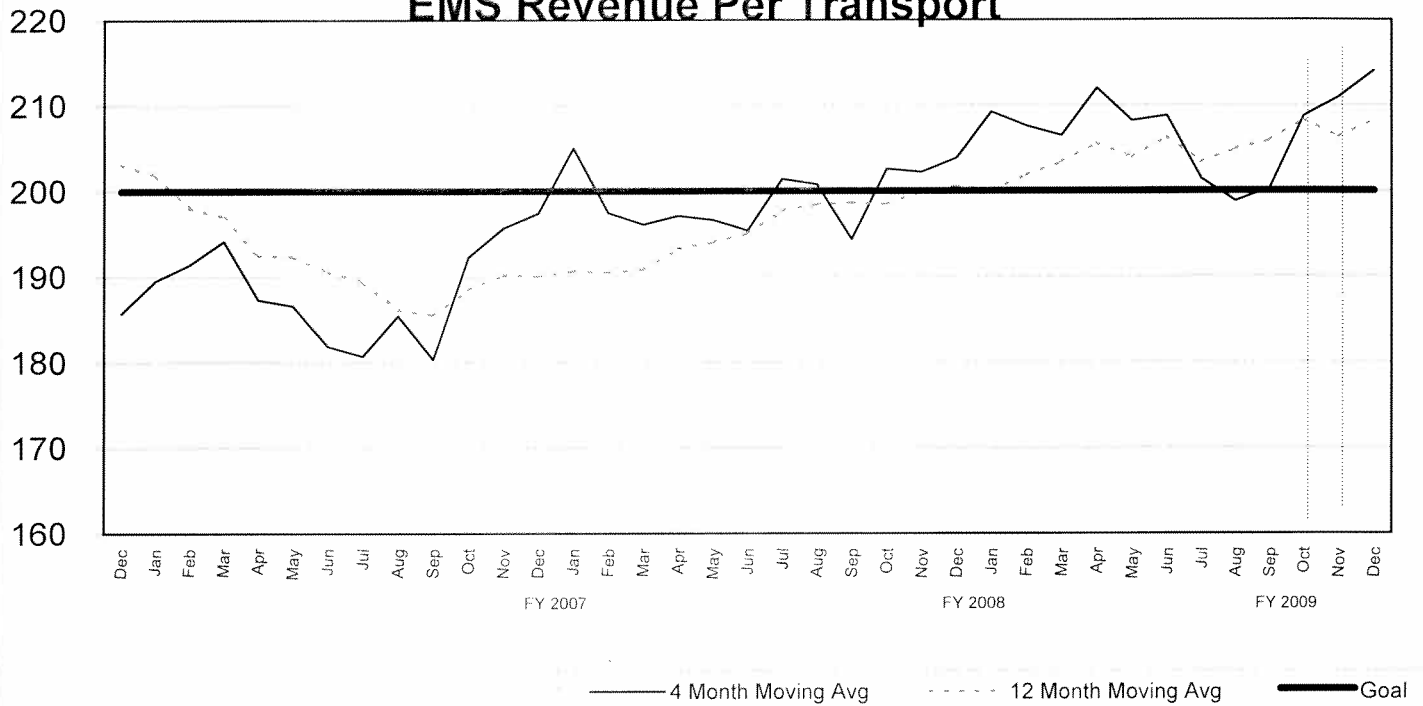
EMS Revenue (Net Collections **)



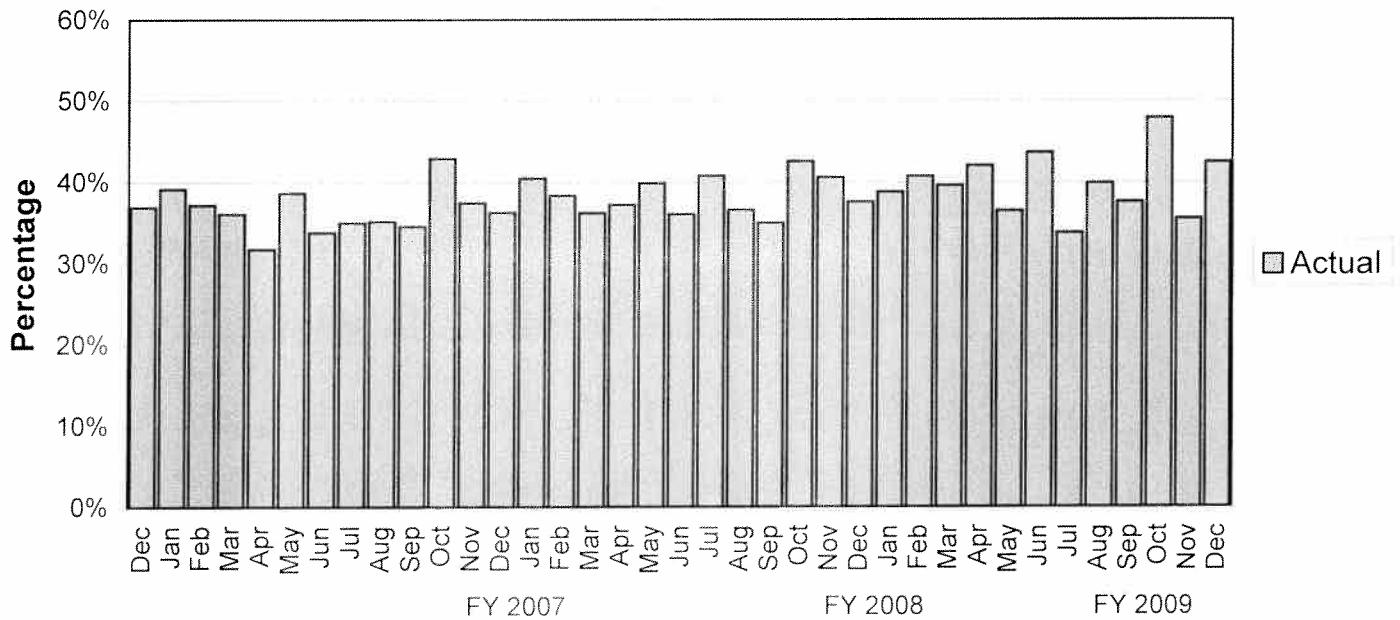
** The net collections for December 2008 were computed using a 12-month average of the Contractor's Invoice

TREND INDICATORS - AMBULANCE SERVICES

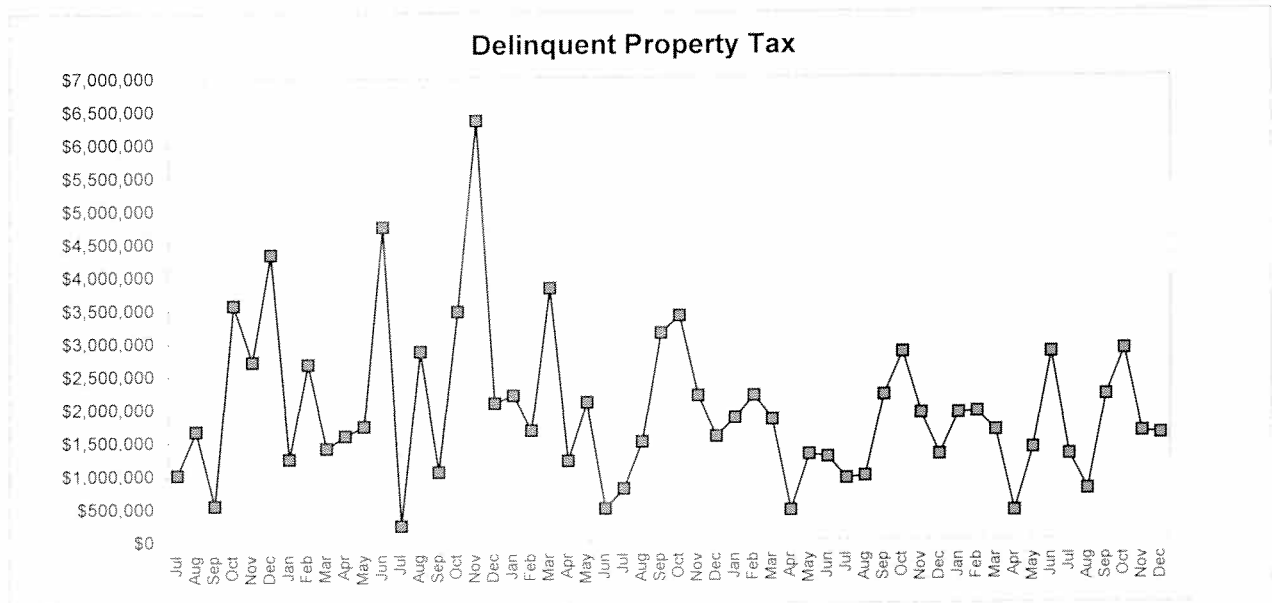
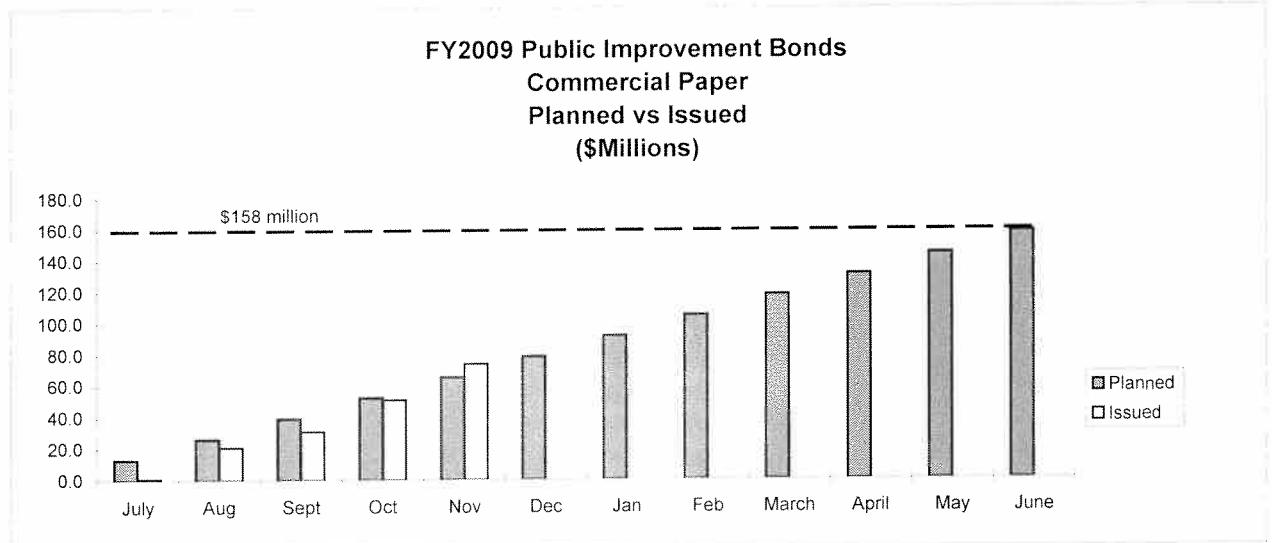
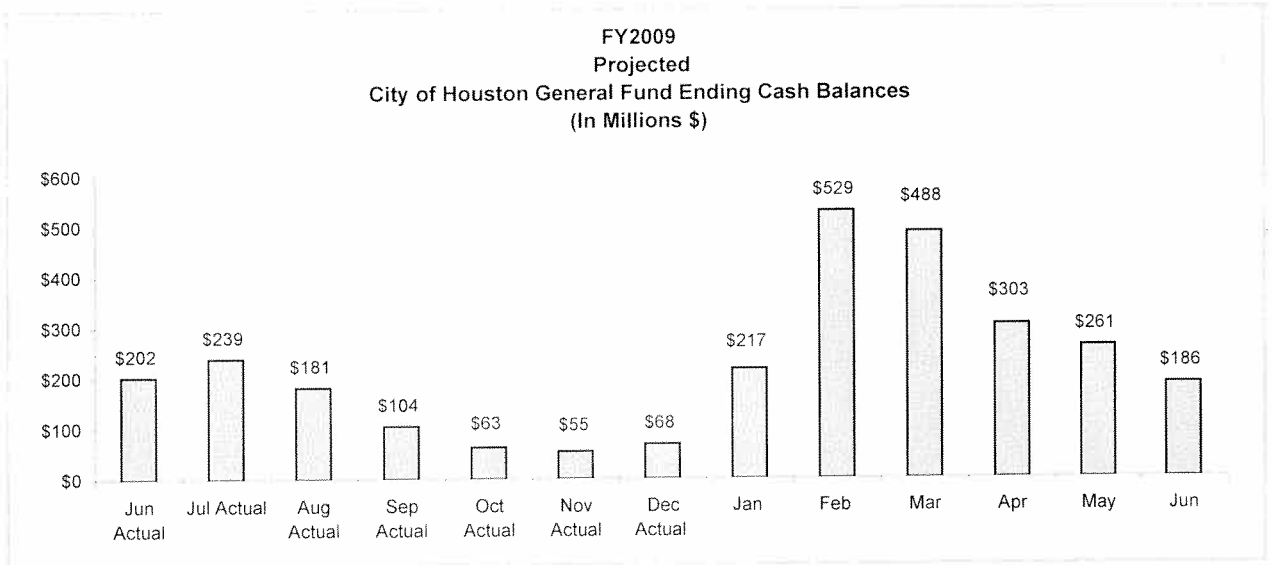
4 Month and 12 Month Moving Average EMS Revenue Per Transport



EMS - Gross Collection Percentage

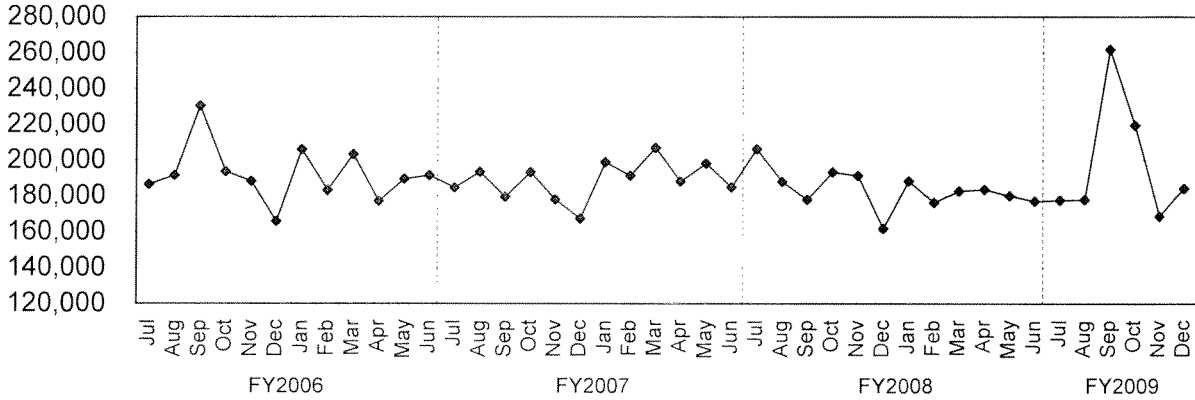


TREND INDICATORS - MISCELLANEOUS



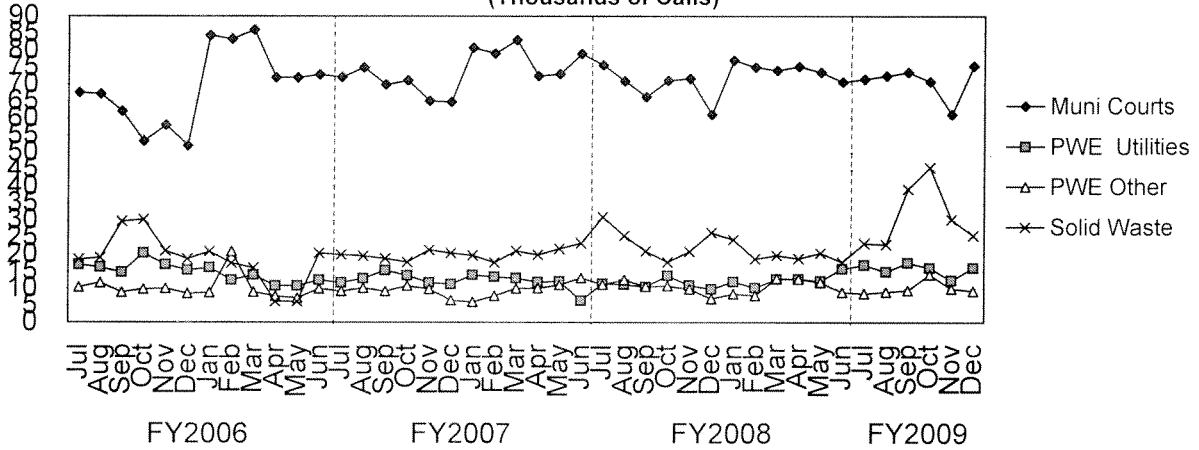
TREND INDICATORS - MISCELLANEOUS

3-1-1 Call Volume



3-1-1 became fully operational in August 2001

Operator Assisted 3-1-1 Call Distribution
(Thousands of Calls)



4 largest users of operator assisted 3-1-1 calls.