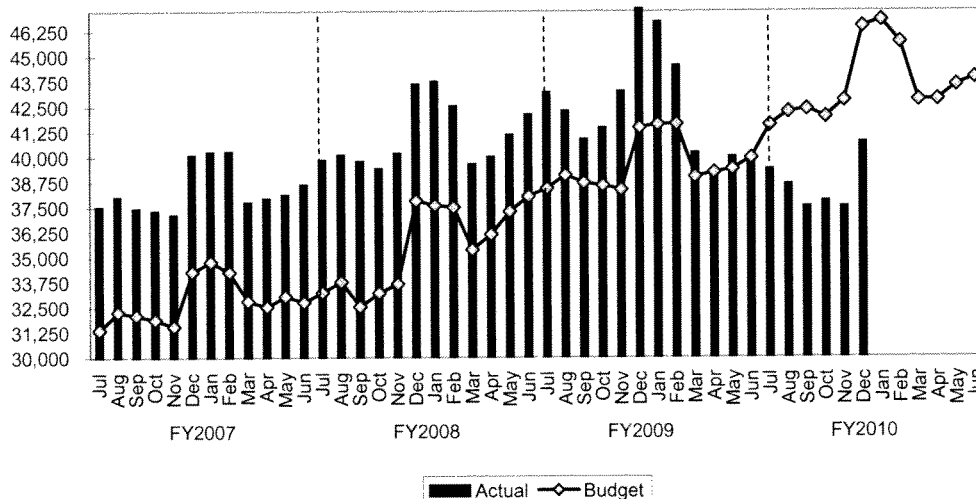


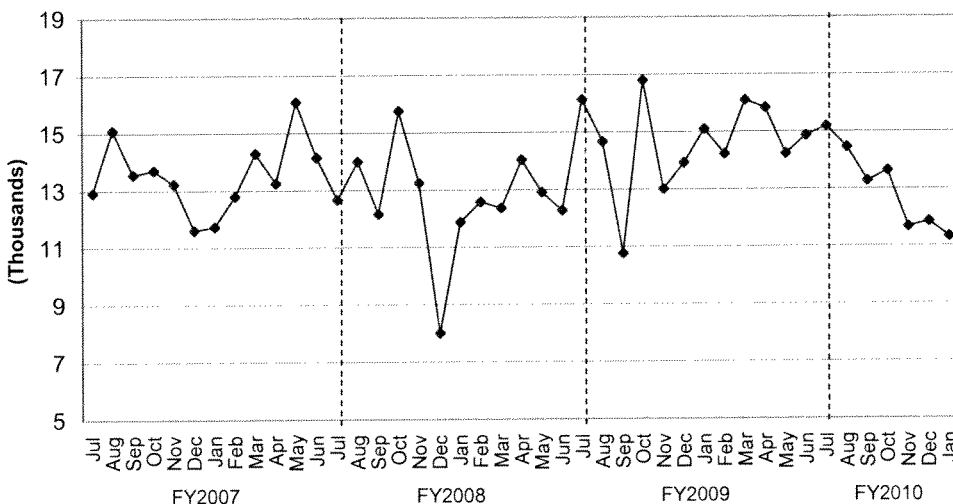
## TREND INDICATORS - LOCAL ECONOMY

### Sales Tax - Three-Month Rolling Average



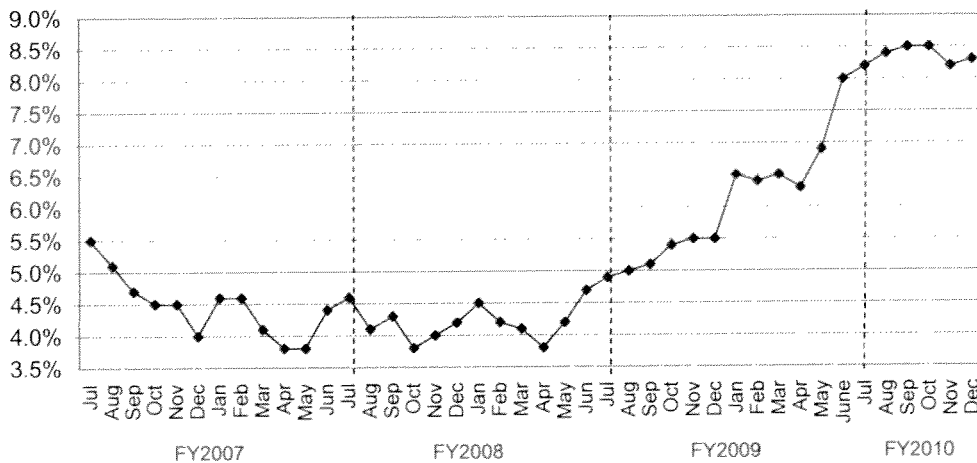
Source: Office of State Comptroller

### Building Permits Issued



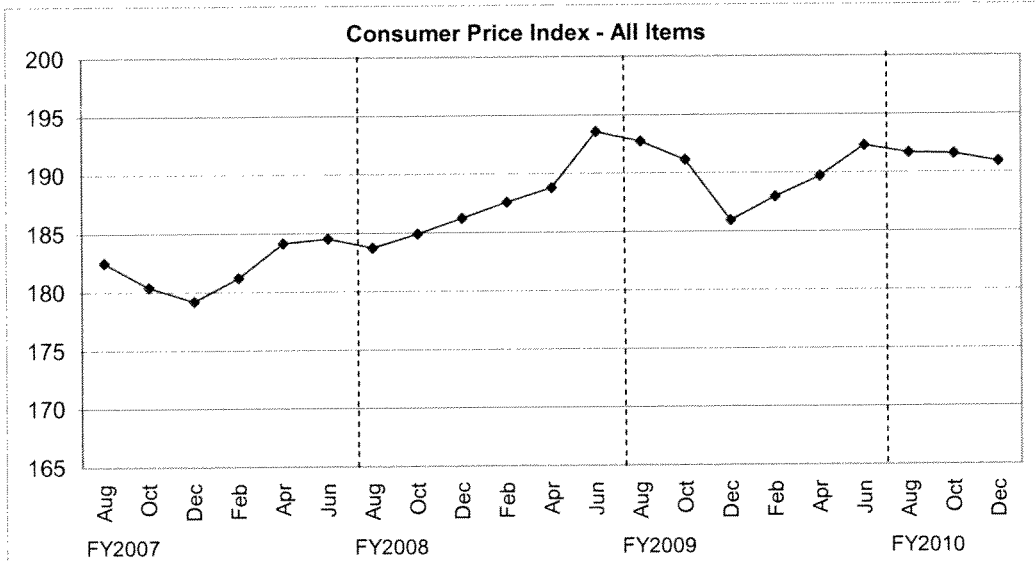
Source: City of Houston Planning and Development Department

### Unemployment Rate

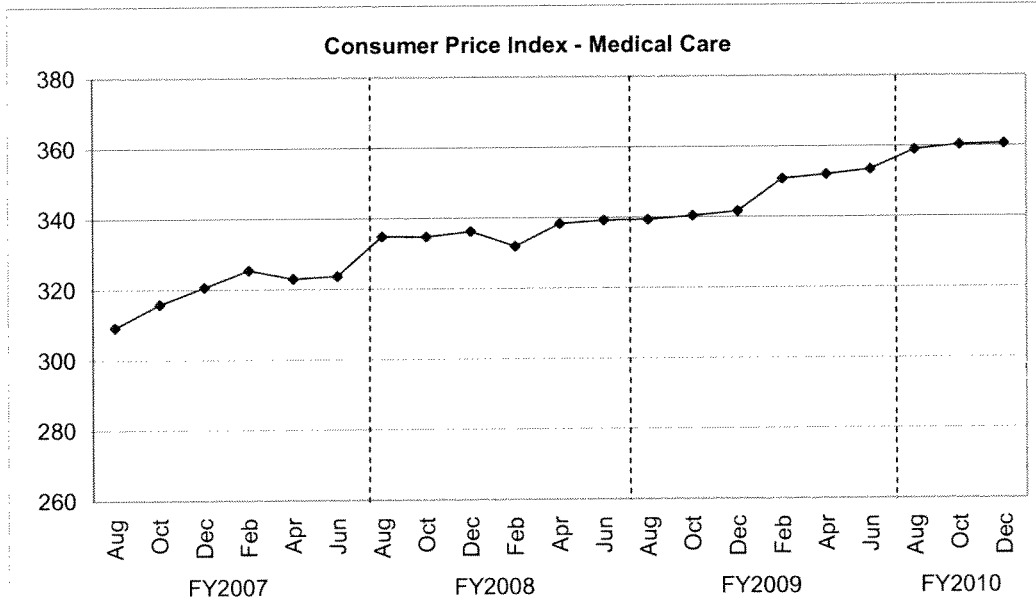


Source: Databook Houston; University of Houston Center for Public Policy; not seasonally adjusted

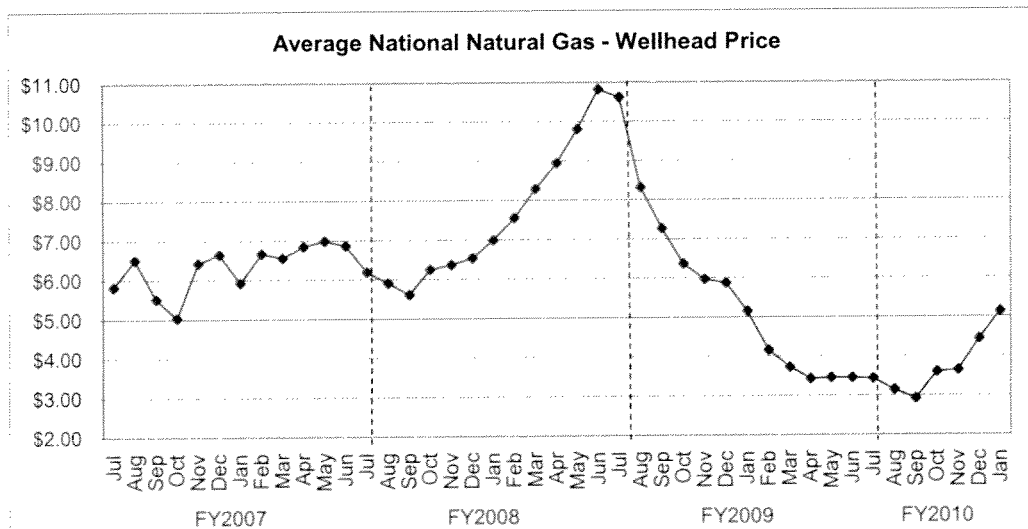
## TREND INDICATORS - LOCAL ECONOMY



Source: Bureau of Labor Statistics - Houston, Galveston, Brazoria TX



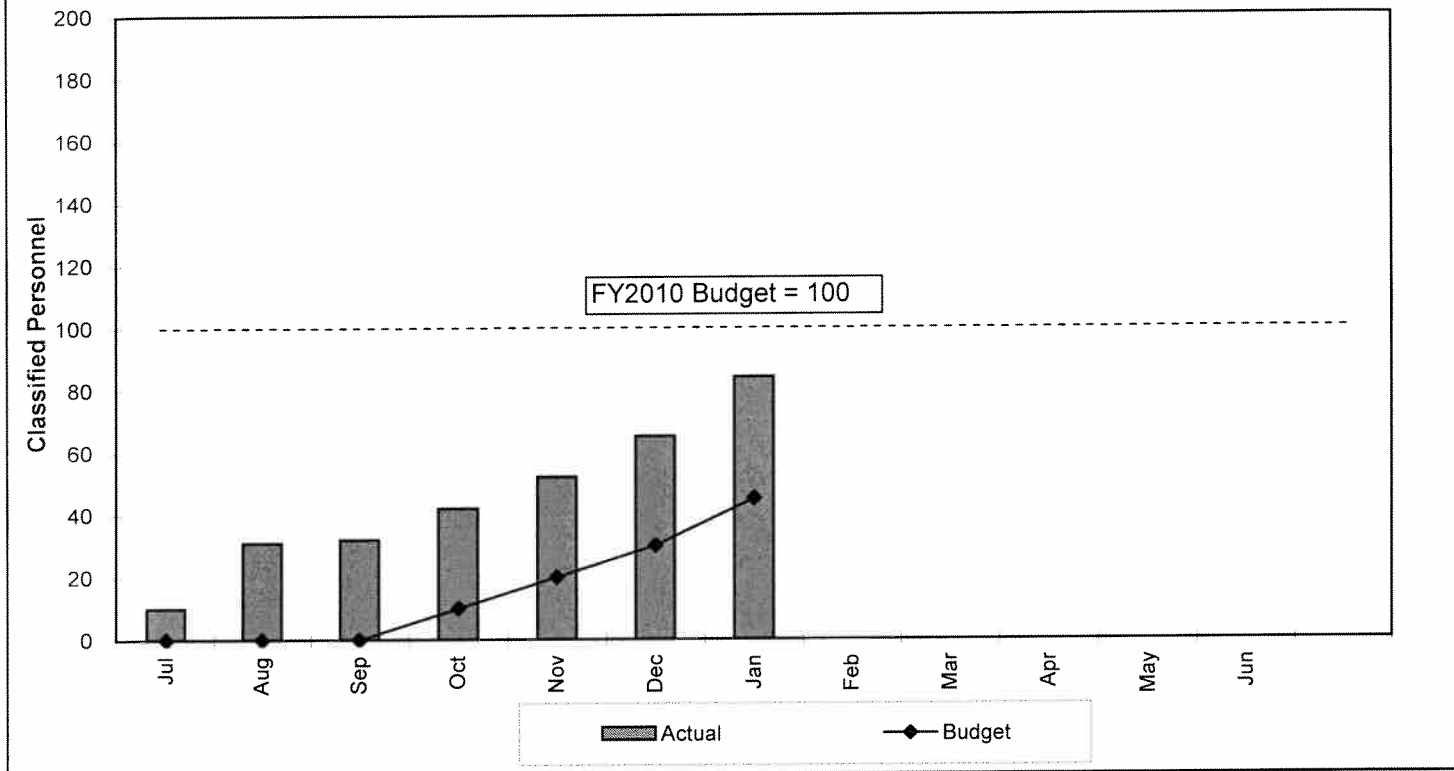
Source: Bureau of Labor Statistics - Houston, Galveston, Brazoria TX



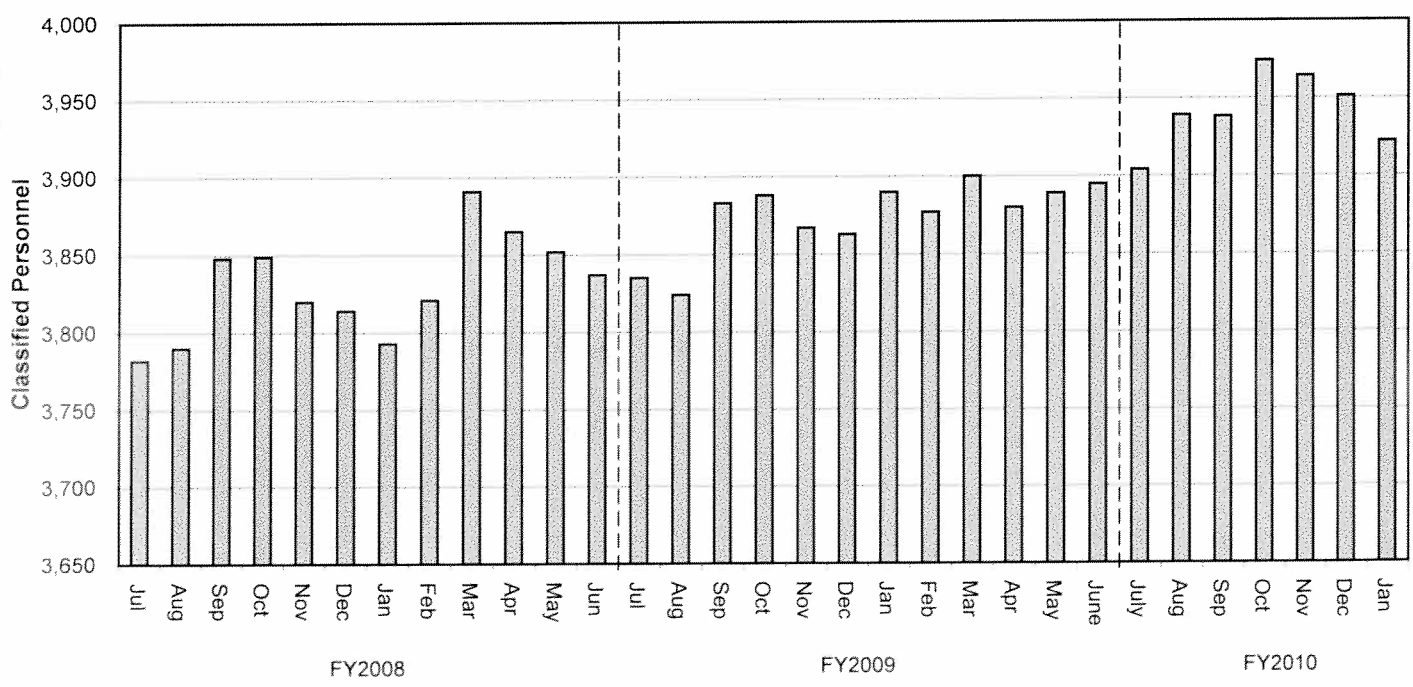
Source: Energy Information Administration/Natural Gas Monthly

# TREND INDICATORS - RETIREMENTS

Houston Fire Department  
FY2010 Classified Attrition

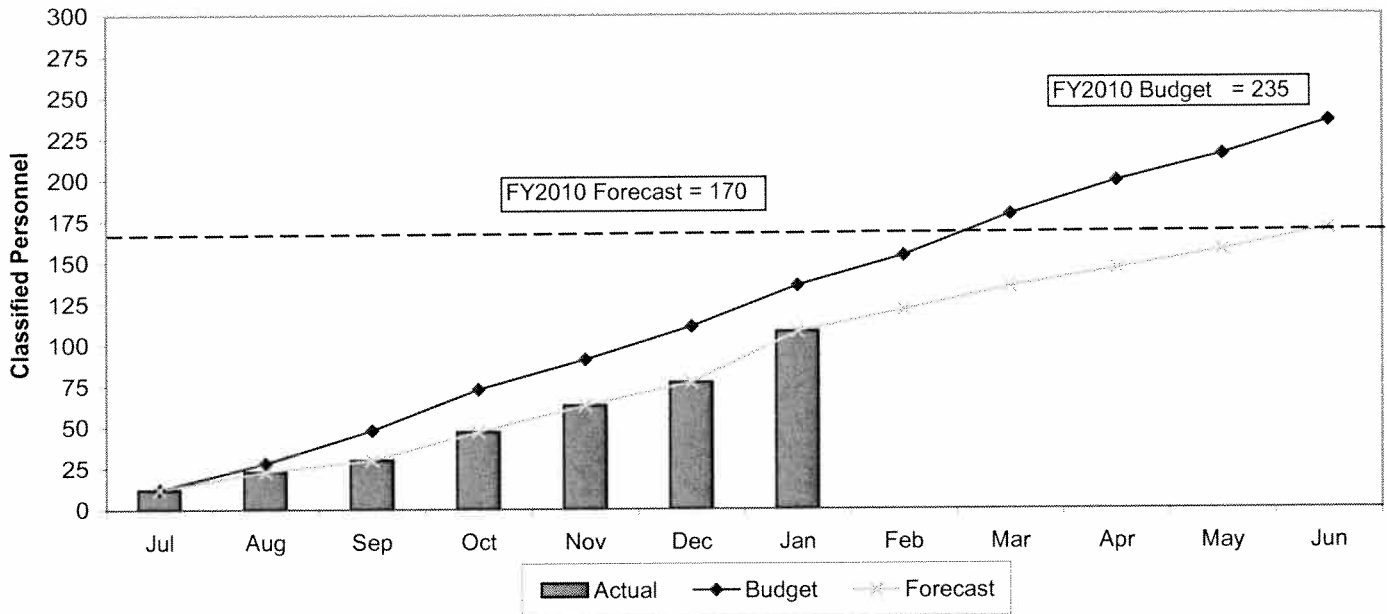


Houston Fire Department  
Classified Staffing - FY2008 to FY2010

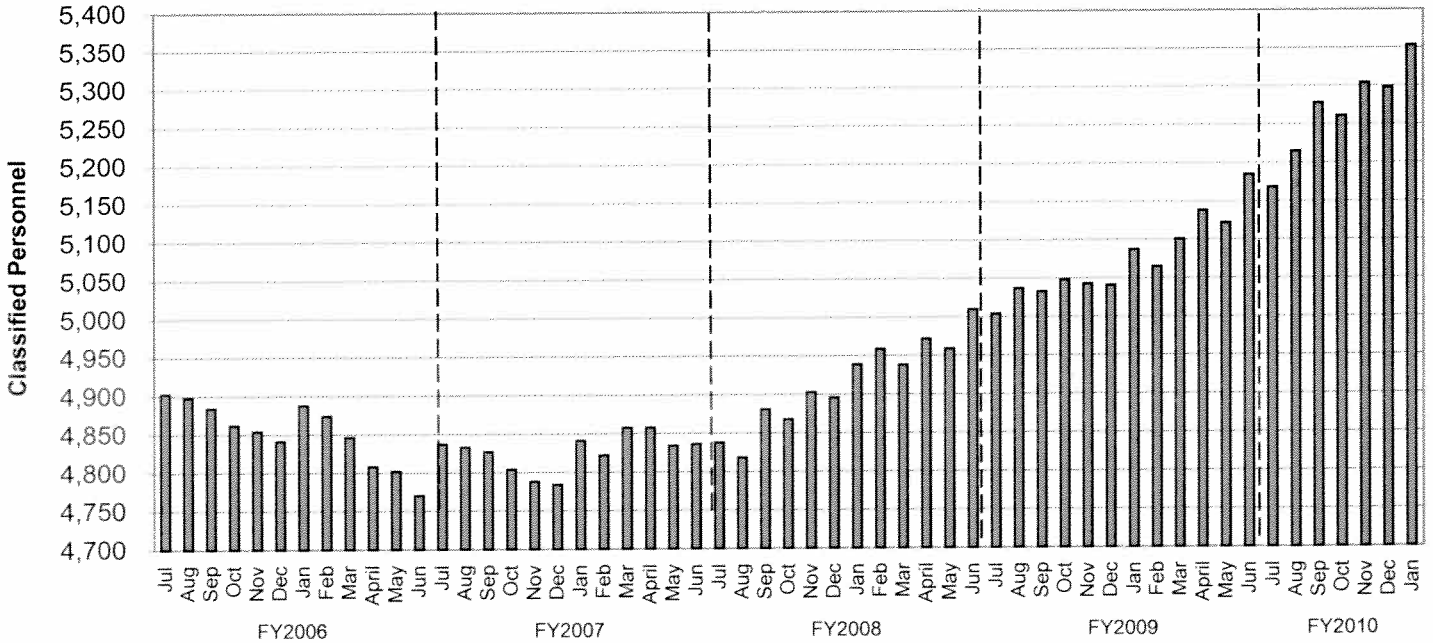


## TREND INDICATORS - HIRING AND RETIREMENTS

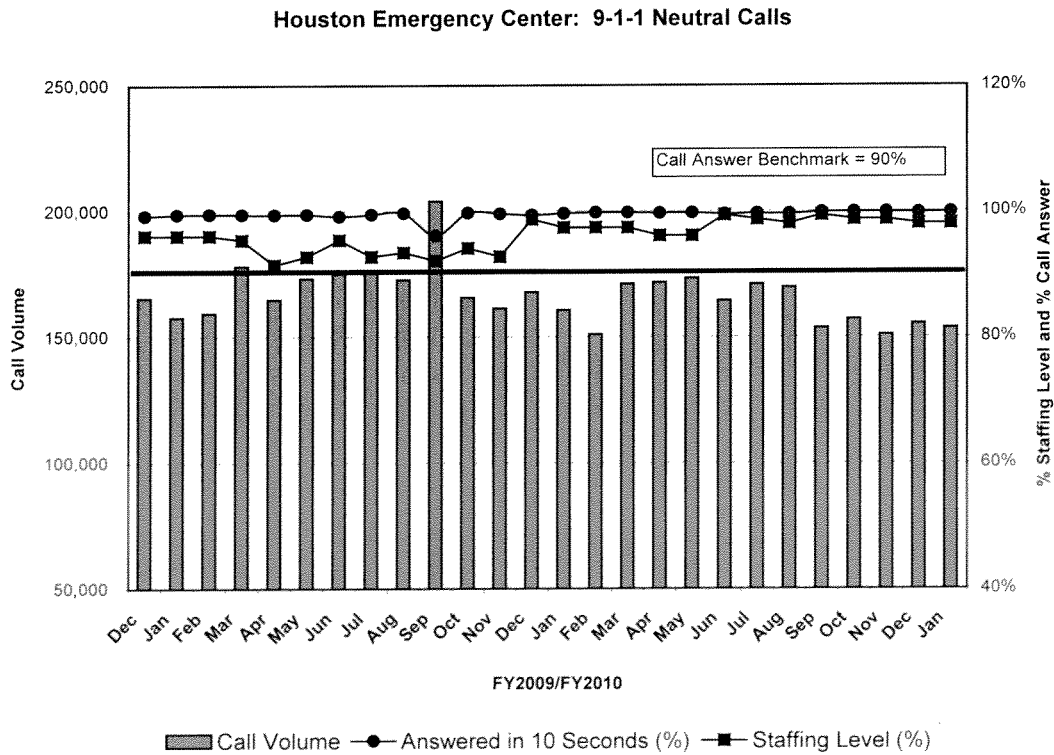
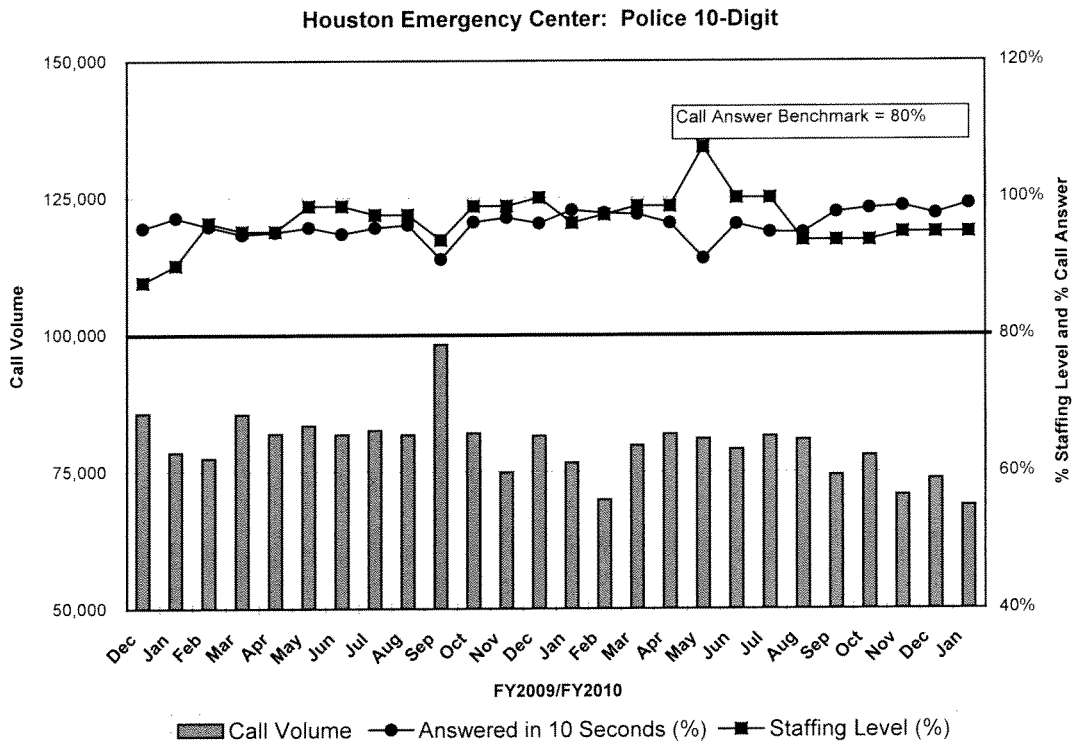
### Houston Police Department FY2010 Classified Attrition



### Houston Police Department Classified Staffing - FY2006 to FY2010

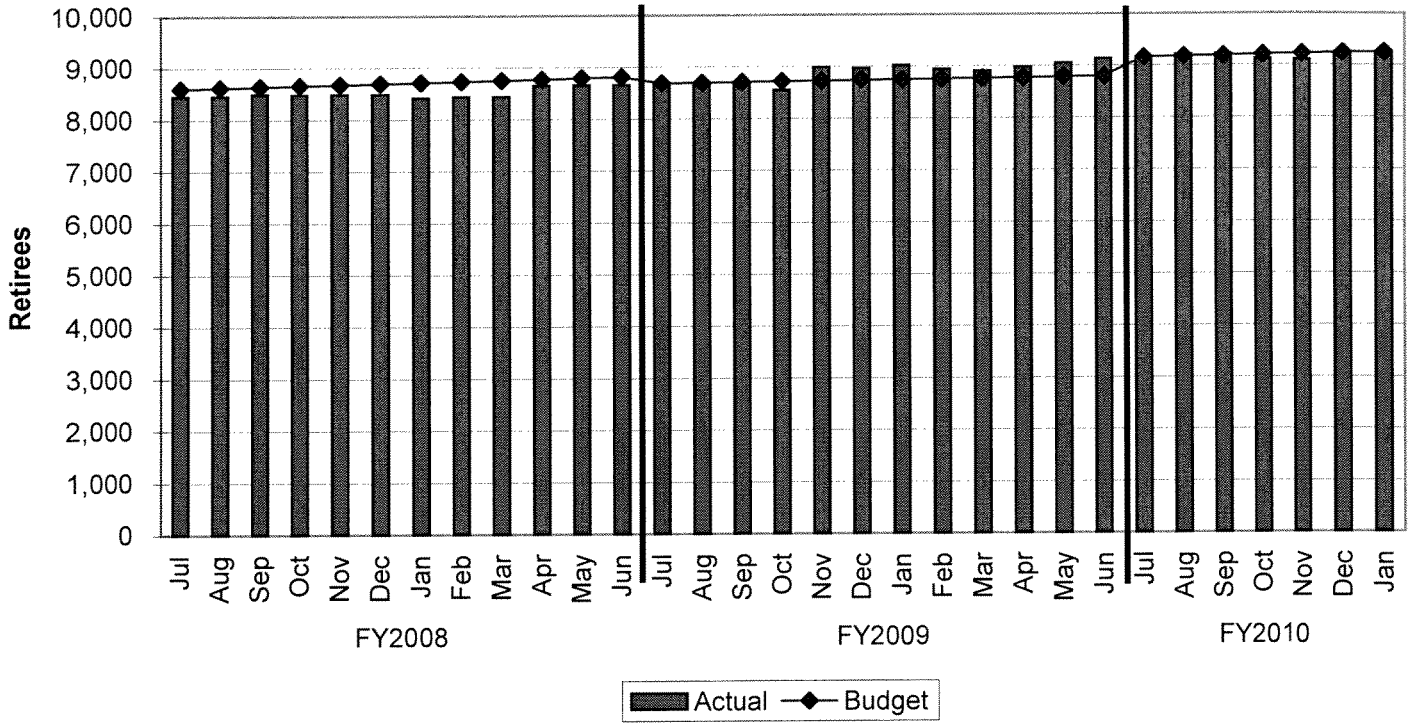


# TREND INDICATORS - HOUSTON EMERGENCY CENTER



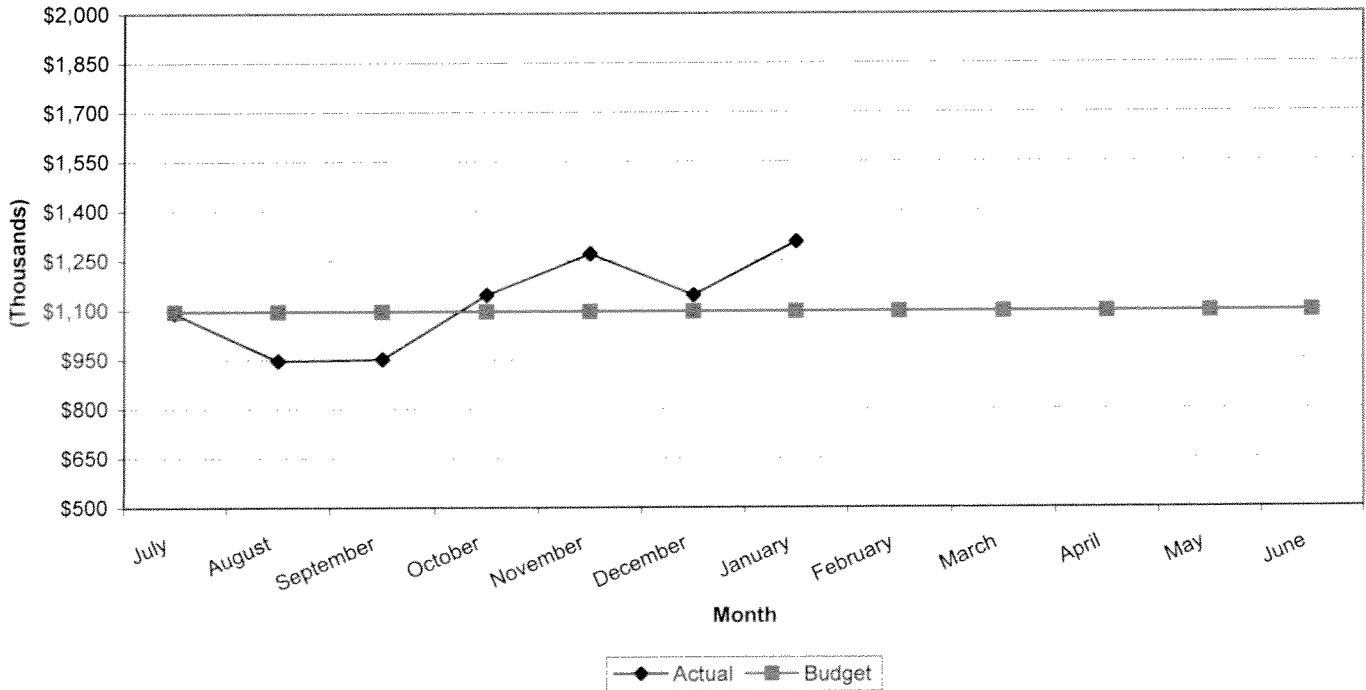
## TREND INDICATORS - RETIREMENTS

### Retirees Receiving Health Benefits



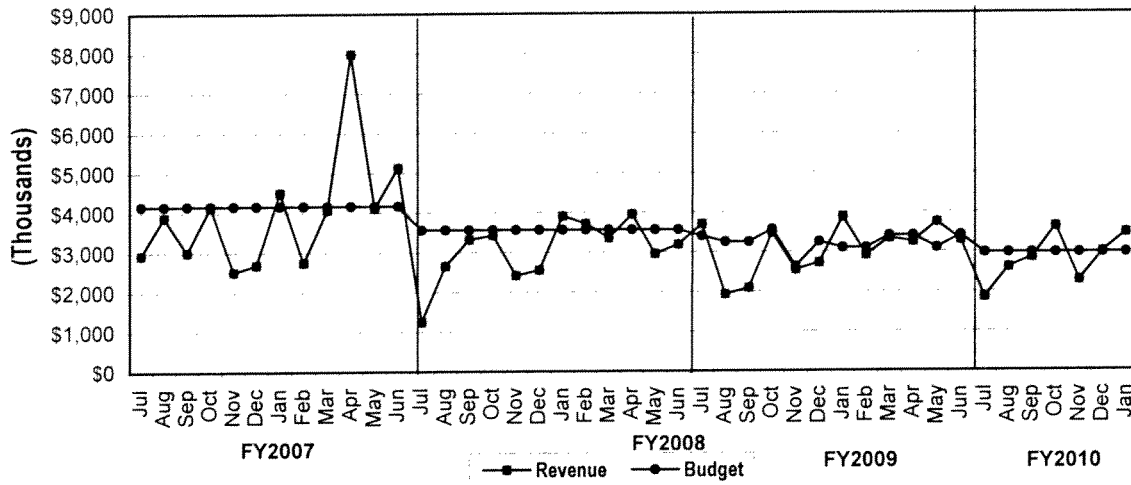
## TREND INDICATORS - PARKING MANAGEMENT

### Total Parking Management Revenue



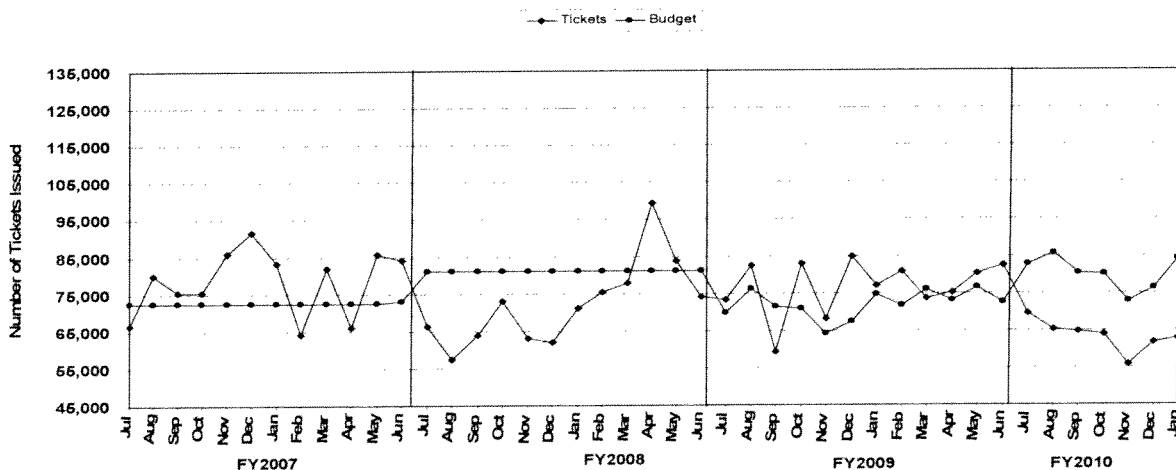
# TREND INDICATORS - MUNICIPAL COURTS

## Total Municipal Courts Revenue



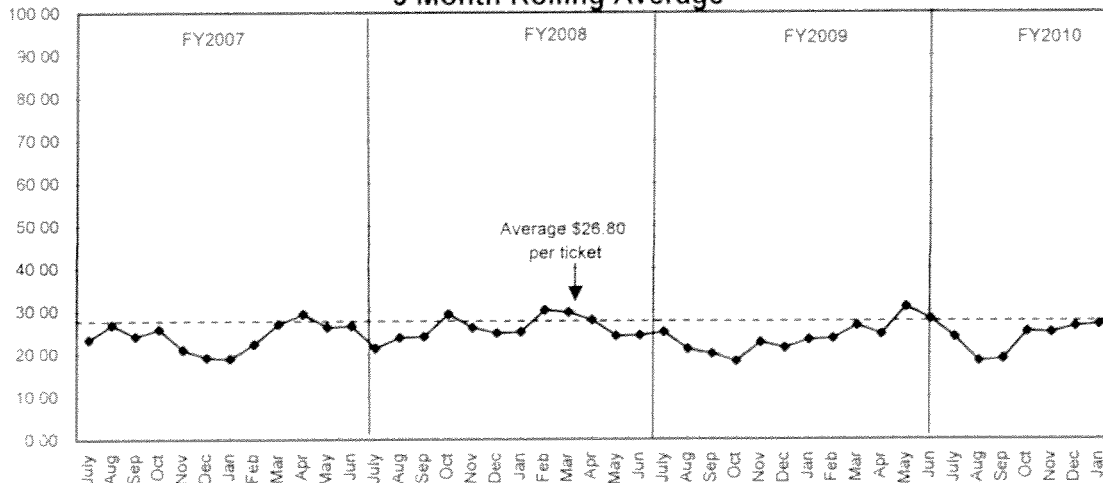
FY2008 - FY2010 does not include Parking Revenue which is now reported in the Parking Management Fund.

## Number of Traffic Citations Issued



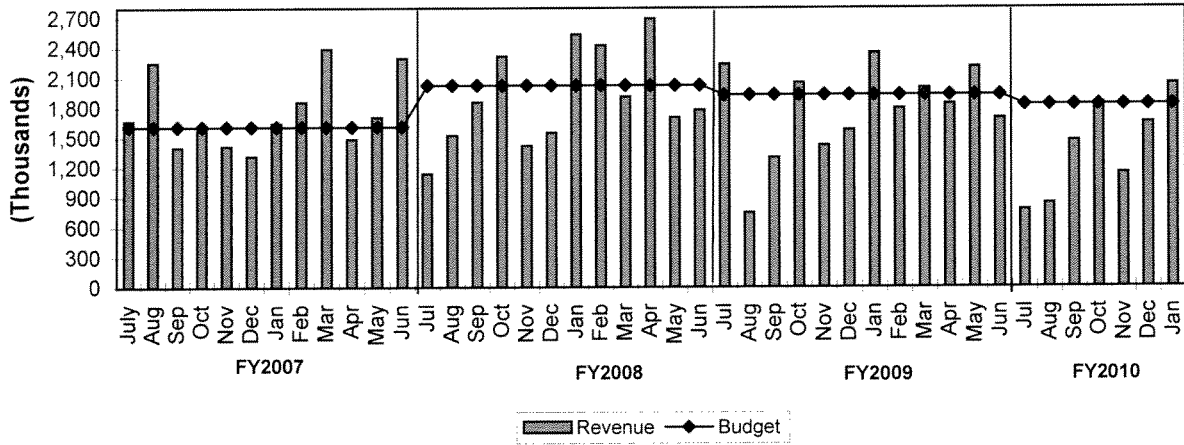
Note: Tickets issued primarily by the Houston Police

## Moving Violations Revenue Per Ticket Issued (427010) 3 Month Rolling Average

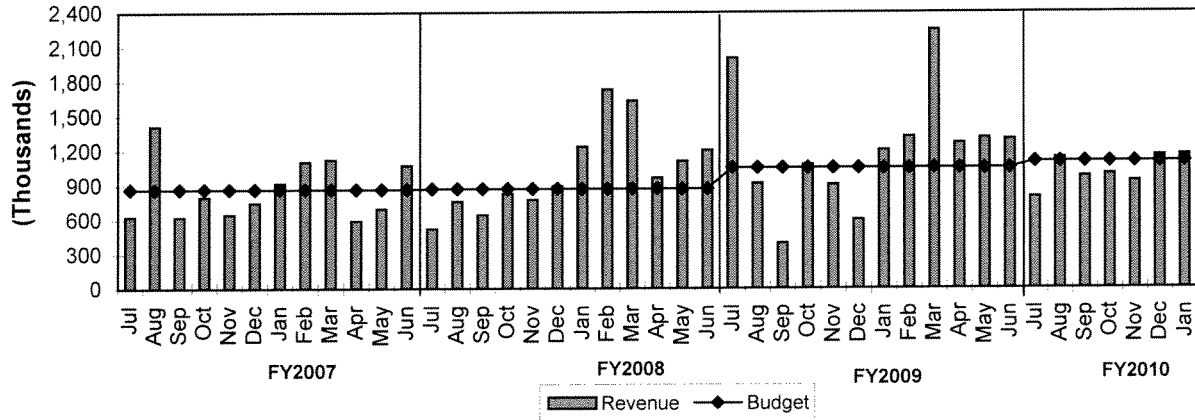


# TREND INDICATORS - MUNICIPAL COURTS

## Moving Violations Collections vs Budget

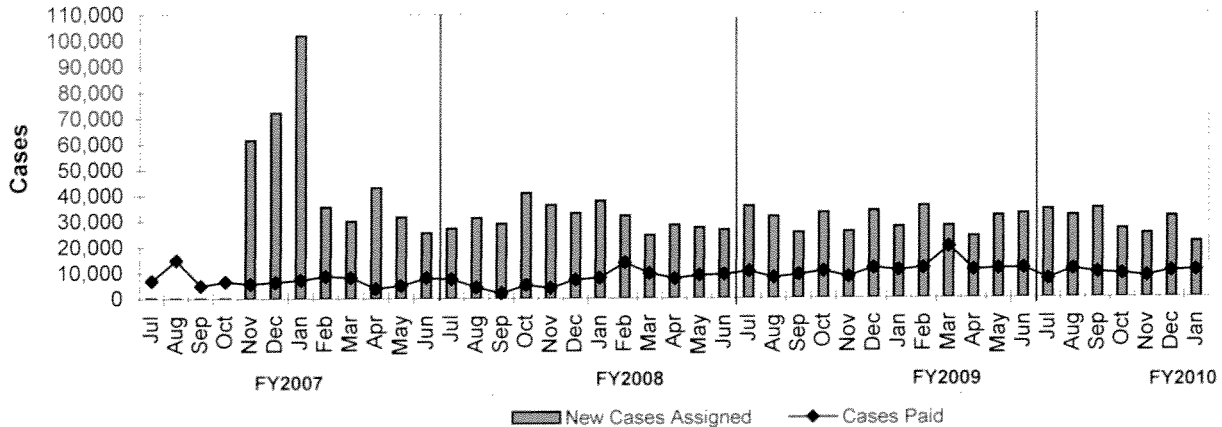


## Total Delinquent Collections vs Budget\*



\*Net of fees and expenses paid to Linebarger

## Traffic, Non-Traffic & Failure to Appear Linebarger Delinquent Collection Rates

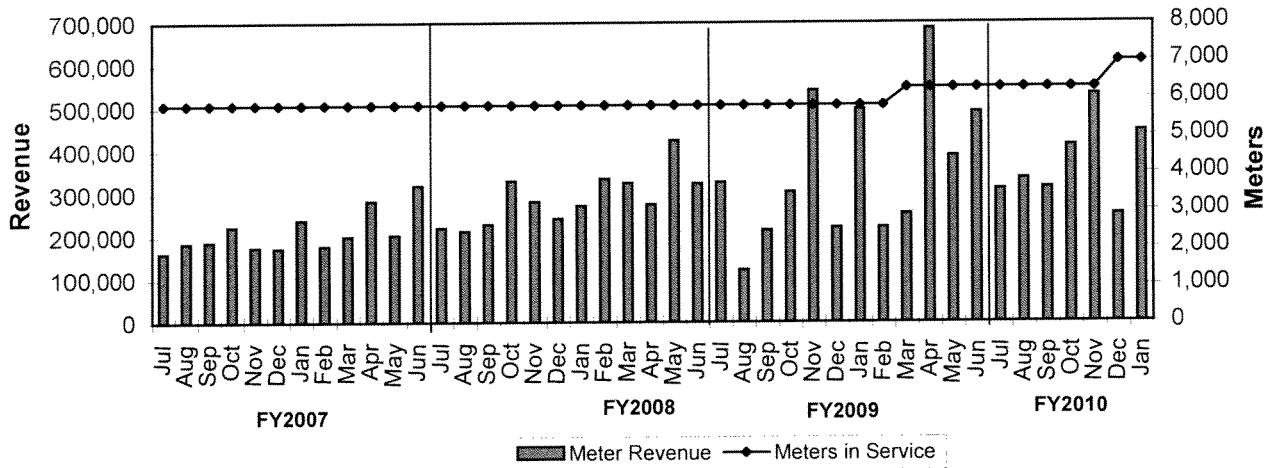


\*Excludes Delinquent Parking Collections

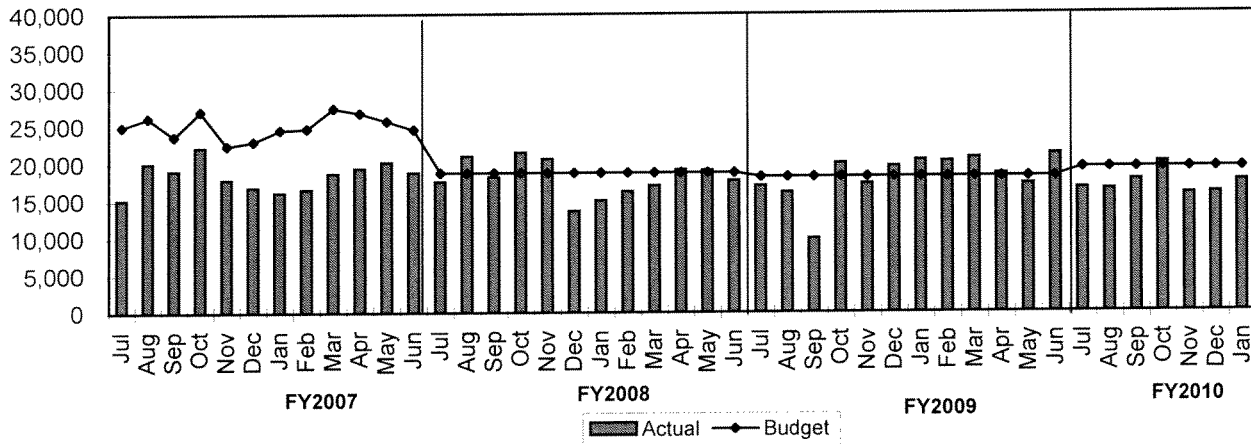


# TREND INDICATORS - MUNICIPAL COURTS

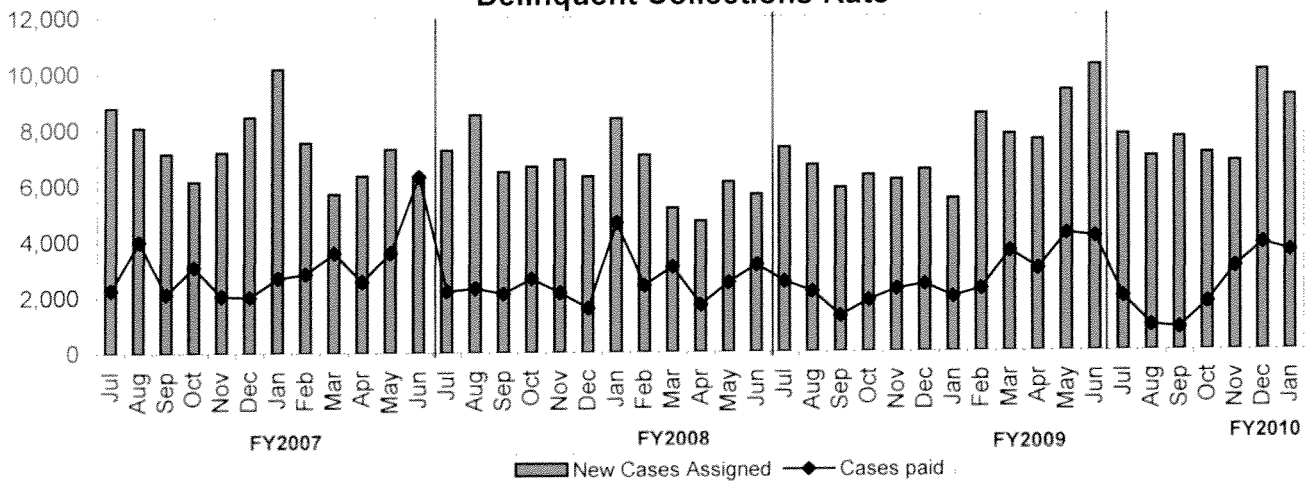
## Meter Revenue vs # Meters in Service



## Parking Violations vs Budget

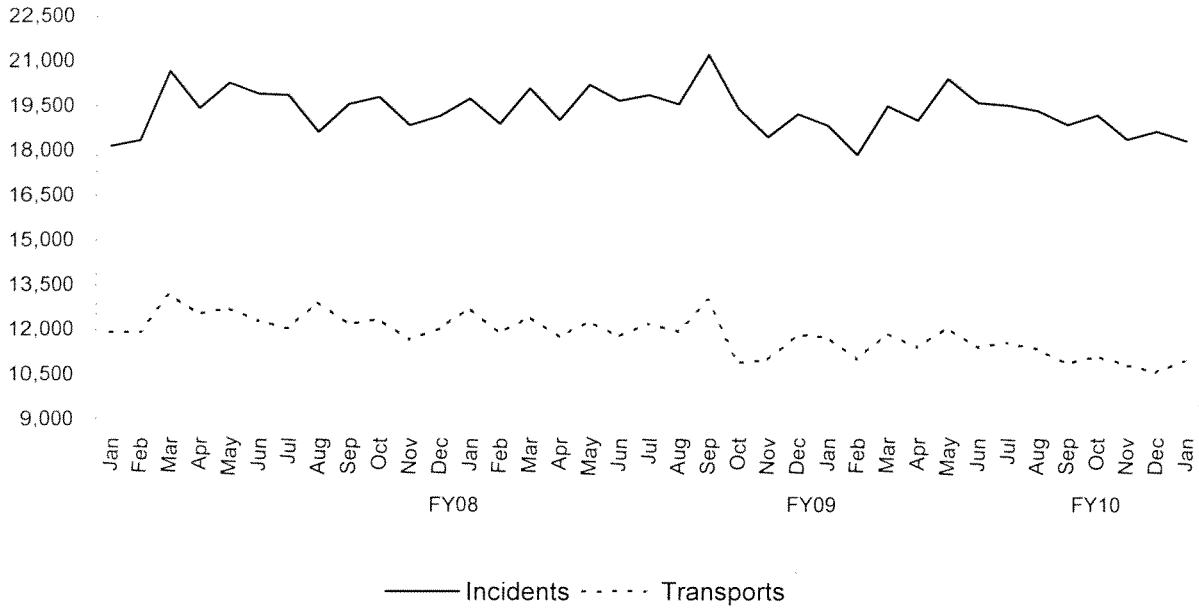


## Parking Meter Violations Delinquent Collections Rate

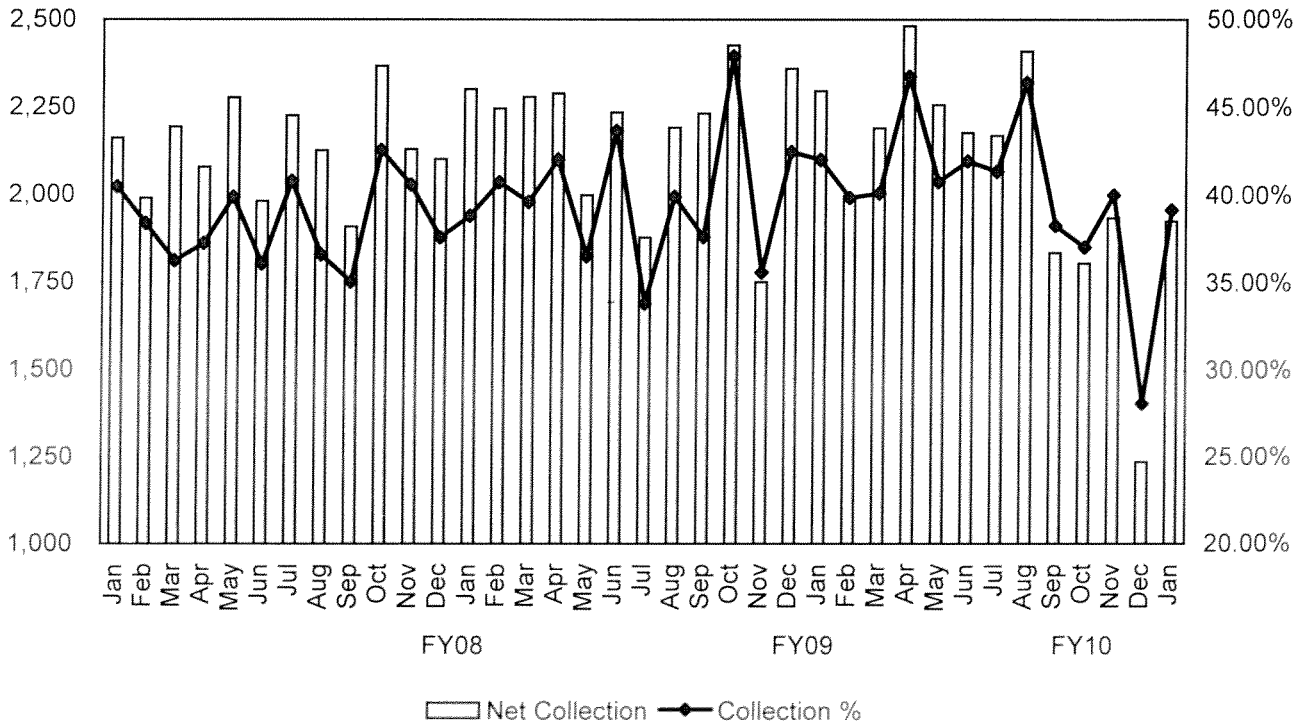


# TREND INDICATORS - AMBULANCE SERVICES

## EMS Incidents and Transports

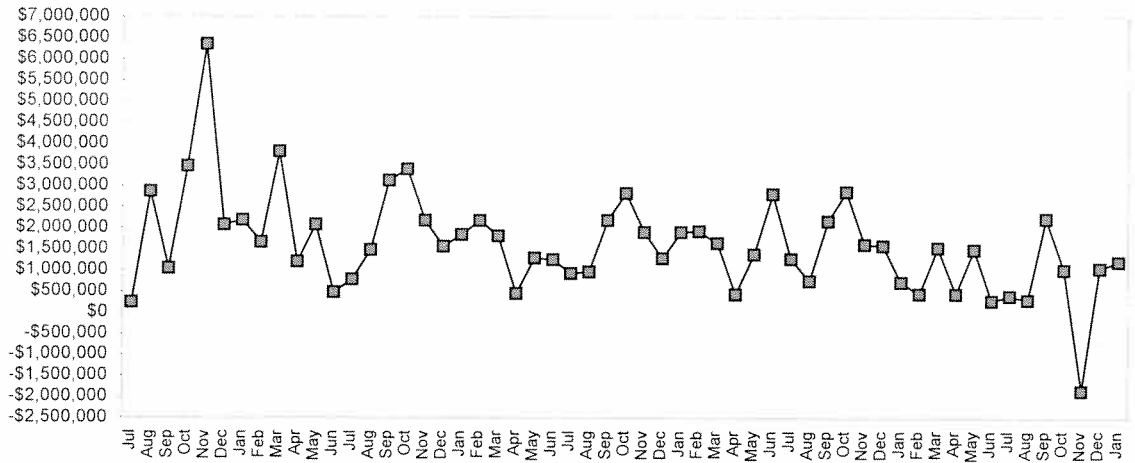


## EMS Net Collections & Collection Percentage



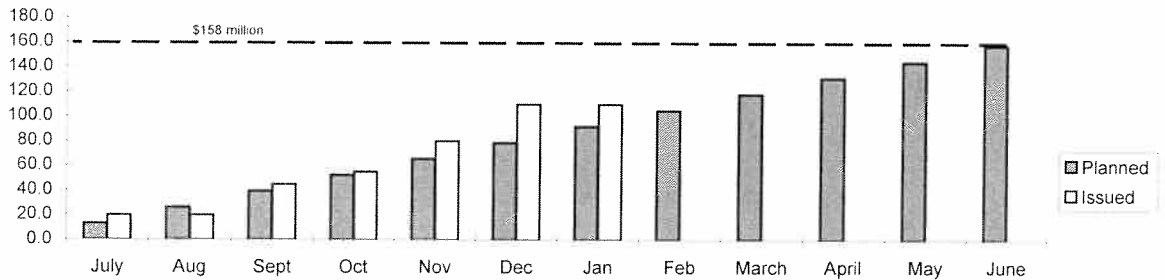
## TREND INDICATORS - MISCELLANEOUS

### Delinquent Property Tax



Negative balance for November 2009 was a net result of more taxes refunded to taxpayers on settlements of value litigations than taxes collected.

### FY2010 Public Improvement Bonds Commercial Paper Planned vs Issued (\$Millions)



### FY2010 Projected City of Houston General Fund Ending Cash Balances (In Millions \$)



