

Houston, Texas

From a Disability Perspective

Total Population: 2,295,804

Population with a Disability: 215,454 (9.4%)

Poverty Status: 32 percent of working-age people with disabilities live below poverty compared with 16 percent of those without disabilities.

Employment: 37 percent of working-age people (18-64) with disabilities are employed compared with 76 percent of those without disabilities. 25 percent people with disabilities over 16 (including those 65 and older) are employed compared with 67 percent of those without disabilities.

Earnings: Among those who are working, more than 33,000 people or 57 percent of workers with disabilities are earning less than \$25,000 compared with 38 percent of those without disabilities.

Educational Attainment: 54 percent of people with disabilities have a high school degree or less compared with 42 percent of those without a disability. 20 percent have a Bachelors' degree or higher compared to 35 percent of those without a disability.

Housing Cost: 27 percent of households with a person with a disability pay more than 50 percent of their income for housing compared with 16 percent of those with no disability in the Houston Metropolitan Statistical Area.

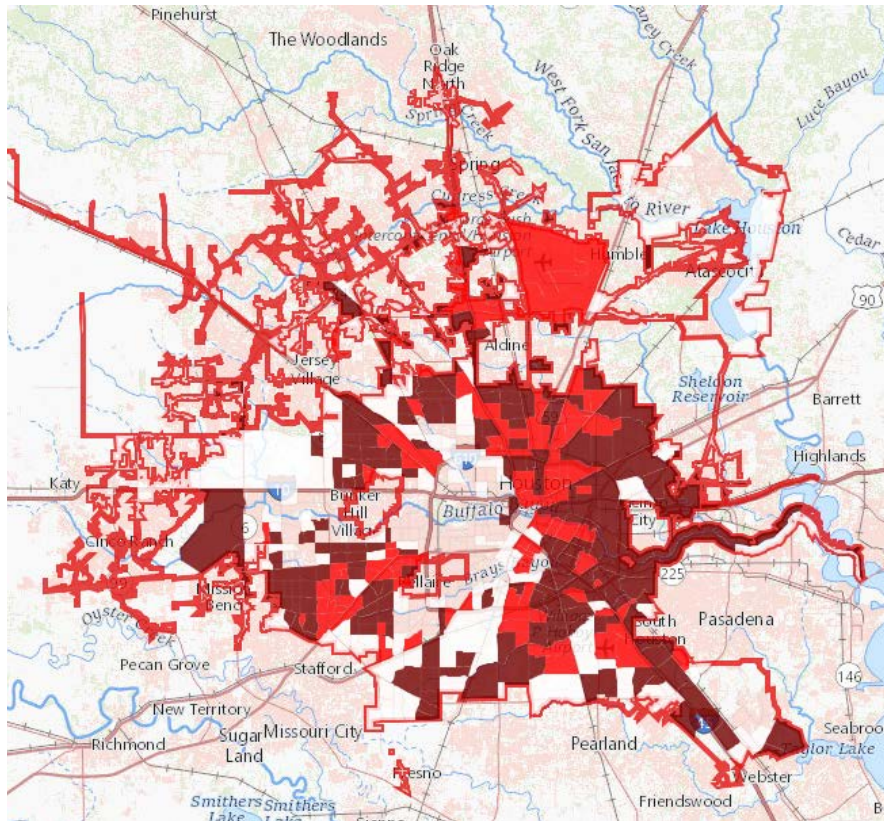
Public School Students: The Houston Independent School District serves 15,455 Students with Disabilities under the Individuals with Disabilities Education Act (IDEA).

SSI and SSDI Beneficiaries: Based on most recent data available (2017), 85,938 Harris County residents receive SSI, 68,740 and receive SSDI.

Empowered Cities is a partnership between Citi Community Development and National Disability Institute (NDI) that engages municipalities and community partners across the United States to identify, design, test and deliver innovative and scalable solutions to expand financial inclusion for people with disabilities.

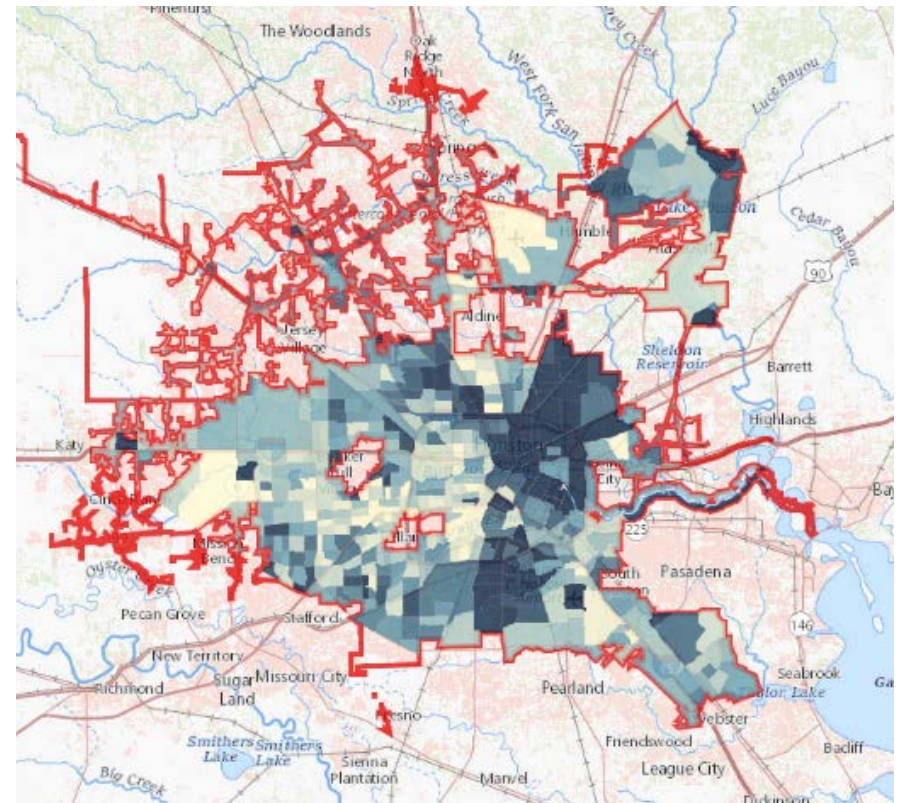
Resources are available at <https://empowercities.com/>

*Low and Moderate Income Areas,
by Census Tract in Houston*



The dark red shading indicates low income neighborhoods. The light red shading represents moderate income neighborhoods.

*Disability as a Percentage of the Population,
by Census Tract in Houston*



The shading in this map indicates the percentage of people in each census tract code who have a disability. In the areas shaded the darkest, over 18 percent of the population has a disability. In areas with the lightest shading, fewer than 4 percent of the population has a disability.

Data Sources

US Census, American Community Survey, American Factfinder:

<https://factfinder.census.gov/>

- Total Population, Population with a disability (Table S1810)
- Employment (age 16 and older), educational attainment, earnings, poverty (Table S1811)
- Employment (working age) (Table B23024)

Housing Costs: American Housing Survey Custom Table Creator.

<https://www.census.gov/programs-surveys/ahs>

Public School Students: National Center for Educational Statistics.

<https://nces.ed.gov/ccd/districtsearch/>

SSI Recipients: *SSI Recipients by State and County, 2017*. Social Security

Administration. https://www.ssa.gov/policy/docs/statcomps/ssi_sc/2017/index.html

SSDI Beneficiaries: *OASDI Beneficiaries by State and County, 2017*. Social Security

Administration. https://www.ssa.gov/policy/docs/statcomps/oasdi_sc/index.html

Maps: Disability data from US Census, American Community Survey. Low and Moderate Income data from Federal Financial Institutions Examination Council. Maps created using ARCGIS Online by ESRI. <http://www.arcgis.com>

Data Resources from NDI and Empowered Cities

Empowered Cities Webinar-Making Data Work for You:

<https://www.nationaldisabilityinstitute.org/webinars/ec-making-data-work-for-you/>

Instructional video-Learn how to download data from the American Community Survey:

<https://www.nationaldisabilityinstitute.org/uncategorized/instructional-video-finding-local-area-disability-data/>

Quick Reference Guide How to Use Data to Identify the Financial Needs of People with Disabilities in Local Communities:

<https://www.nationaldisabilityinstitute.org/wp-content/uploads/2019/03/ec-qrg-data-collection.pdf>