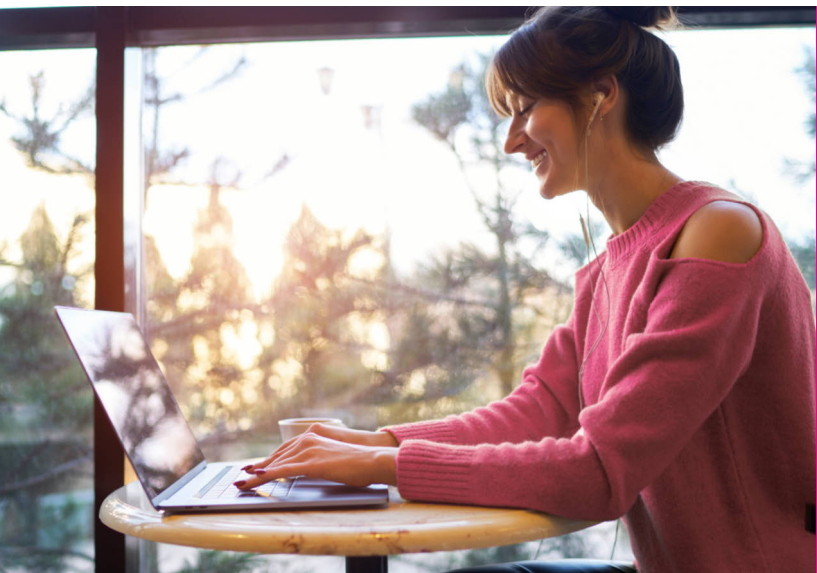




Because you work at  
**City of Houston**

# Switch & Save



Save

# \$200

with **\$10/mo discount** on premium  
**UNLIMITED Talk, Text and Data!**

Req. new acct. on Magenta Plus \$5/mo./line discount up to 2 lines for 20 mos. During congestion, customers using >50GB/mo. may notice lower speeds than other customers due to data prioritization. Video typically streams on smartphone at DVD quality (480p).

## Get premium features like...



Netflix ON US



International  
texting and data



Scam Shield™  
Premium



Free stuff  
with T-Mobile  
Tuesdays

## ...all with taxes and fees included.

Be sure to mention your employer to receive this offer.



**855-570-9947**



**<https://bit.ly/tmobileperks>**



**[t-mobile.com/store-locator](https://t-mobile.com/store-locator)**

Juan Luis Rivera  
[juan.l.rivera@t-mobile.com](mailto:juan.l.rivera@t-mobile.com)

Netflix: 2+ lines req'd. Standard, up to 2 HD screens. Qualifying service and capable device required. Turning on Scam Block may block calls you want; disable at any time. Sales tax and regulatory fees included in monthly rate plan.

Limited time offer, subj. to change **T-Mobile Work Perks**: Qualifying credit, new acct. with 12 or less lines, & port- from AT&T, Verizon, or Claro required. Enroll and validate eligible employment w/i 30 days of activ. reverification over 20 mos. may be required. Must be active & in good standing to receive bill credits. Allow 2 bill cycles. Credits may stop if you cancel any lines. May not be combined with some offers/discounts. Limit 1 T-Mobile Work Perks Corp node per acct. **Magenta Plus**: Credit approval, deposit, \$10 SIM card, and, in stores & on customer service calls, \$20 assisted or upgrade support charge may be req., U.S. roaming and on-network data allotments differ; includes 200MB roaming. Unlimited talk & text features for direct communications between 2 people; others (e.g., conference & chat lines, etc.) may cost extra. Unlimited high-speed data US only. In Canada/Mexico, up to 5GB high-speed data then unlimited at up to 256kbps. Not avail. for hotspots & some other data-first devices. Capable device required for some features. **Netflix**: Receive Netflix Standard (2-screen, up to a \$12.99/mo. value) with 2+ qual'g lines in good standing. Value may be applied to different Netflix streaming plans. Not redeemable or refundable for cash. Cancel Netflix anytime. Netflix Terms apply: [www.netflix.com/termsofuse](http://www.netflix.com/termsofuse). 1 offer per T-Mobile acct.; may take 1-2 bill cycles. See [t-mobile.com/netflix](http://t-mobile.com/netflix) for add'l info. Like all plans, features may change or be discontinued at any time; see T-Mobile Terms and Conditions at T-Mobile.com for details. **Tethering**: 20GB high-speed data then unlimited on our network at max 3G speeds. Service may be terminated or restricted for excessive roaming. For the small fraction of customers using >50GB/mo., primary data usage must be on smartphone & is prioritized over Mobile Hotspot Service (tethering) usage, which may result in higher speeds for data used on smartphones. **AutoPay Pricing** for lines 1-8. Without AutoPay, \$5 more/line. May not be reflected on 1st bill. **Int'l Roaming**: Usage may be taxed in some countries. Calls from Simple Global countries, including over Wi-Fi, are \$.25/min. (no charge for Wi-Fi calls to US, Mexico and Canada). Standard speeds approx. 256 Kbps. **Not for extended international use; you must reside in the U.S. and primary usage must occur on our network.** Device must register on our network before international use. Service may be terminated or restricted for excessive roaming. Coverage not available in some areas. **Network Management**: Service may be slowed, suspended, terminated, or restricted for misuse, abnormal use, interference with our network or ability to provide quality service to other users, or significant roaming. During congestion the small fraction of customers using >50GB/mo. may notice reduced speeds until next bill cycle due to data prioritization. On-device usage is prioritized over tethering usage, which may result in higher speeds for data used on device. See [T-Mobile.com/OpenInternet](http://T-Mobile.com/OpenInternet) for details. See **Terms and Conditions (including arbitration provision)** at [www.T-Mobile.com](http://www.T-Mobile.com) for additional information. T-Mobile, the T logo, Magenta & the magenta color are registered trademarks of Deutsche Telekom AG. © 2020 T-Mobile USA, Inc. N205592



Because you work at  
**City of Houston**

# Switch & Save



Save more than

# \$900

over Verizon

with \$10/mo discount on premium  
**UNLIMITED Talk, Text and Data!**

Compared to 3 lines of Verizon Get More Unlimited over 20 mos. with approx. taxes and fees. Carriers features and fees may differ. Req. new acct. on Magenta Plus \$5/mo./line discount up to 2 lines for 20 mos. During congestion, customers using >50GB/mo. may notice lower speeds than other customers due to data prioritization. Video typically streams on smartphone at DVD quality (480p).

## Get premium features like...



Netflix ON US



International  
texting and data



Scam Shield™  
Premium



Free stuff  
with T-Mobile  
Tuesdays

## ...all with taxes and fees included.

Be sure to mention your employer to receive this offer.



**855-570-9947**



**<https://bit.ly/tmobileperks>**



**[t-mobile.com/store-locator](https://t-mobile.com/store-locator)**

Juan Luis Rivera  
[juan.l.rivera@t-mobile.com](mailto:juan.l.rivera@t-mobile.com)

Netflix: 2+ lines req'd. Standard, up to 2 HD screens. Qualifying service and capable device required. Turning on Scam Block may block calls you want; disable at any time. Sales tax and regulatory fees included in monthly rate plan.

Limited time offer, subj. to change **T-Mobile Work Perks**: Qualifying credit, new acct. with 12 or less lines, & port- from AT&T, Verizon, or Claro required. Enroll and validate eligible employment w/i 30 days of activ. reverification over 20 mos. may be required. Must be active & in good standing to receive bill credits. Allow 2 bill cycles. Credits may stop if you cancel any lines. May not be combined with some offers/discounts. Limit 1 T-Mobile Work Perks Corp node per acct.  
**Magenta Plus**: Credit approval, deposit, \$10 SIM card, and, in stores & on customer service calls, \$20 assisted or upgrade support charge may be req., U.S. roaming and on-network data allotments differ; includes 200MB roaming. Unlimited talk & text features for direct communications between 2 people; others (e.g., conference & chat lines, etc.) may cost extra. Unlimited high-speed data US only. In Canada/Mexico, up to 5GB high-speed data then unlimited at up to 256kbps. Not avail. for hotspots & some other data-first devices. Capable device required for some features. **Netflix**: Receive Netflix Standard (2-screen, up to a \$12.99/mo. value) with 2+ qual'g lines in good standing. Value may be applied to different Netflix streaming plans. Not redeemable or refundable for cash. Cancel Netflix anytime. Netflix Terms apply: [www.netflix.com/termsofuse](http://www.netflix.com/termsofuse). 1 offer per T-Mobile acct.; may take 1-2 bill cycles. See [t-mobile.com/netflix](http://t-mobile.com/netflix) for add'l info. Like all plans, features may change or be discontinued at any time; see T-Mobile Terms and Conditions at T-Mobile.com for details. **Tethering**: 20GB high-speed data then unlimited on our network at max 3G speeds. Service may be terminated or restricted for excessive roaming. For the small fraction of customers using >50GB/mo., primary data usage must be on smartphone & is prioritized over Mobile Hotspot Service (tethering) usage, which may result in higher speeds for data used on smartphones. **AutoPay Pricing** for lines 1-8. Without AutoPay, \$5 more/line. May not be reflected on 1st bill. **Int'l Roaming**: Usage may be taxed in some countries. Calls from Simple Global countries, including over Wi-Fi, are \$.25/min. (no charge for Wi-Fi calls to US, Mexico and Canada). Standard speeds approx. 256 Kbps. **Not for extended international use; you must reside in the U.S. and primary usage must occur on our network.** Device must register on our network before international use. Service may be terminated or restricted for excessive roaming. Coverage not available in some areas. **Network Management**: Service may be slowed, suspended, terminated, or restricted for misuse, abnormal use, interference with our network or ability to provide quality service to other users, or significant roaming. During congestion the small fraction of customers using >50GB/mo. may notice reduced speeds until next bill cycle due to data prioritization. On-device usage is prioritized over tethering usage, which may result in higher speeds for data used on device. See [T-Mobile.com/OpenInternet](http://T-Mobile.com/OpenInternet) for details. See **Terms and Conditions (including arbitration provision)** at [www.T-Mobile.com](http://www.T-Mobile.com) for additional information. T-Mobile, the T logo, Magenta & the magenta color are registered trademarks of Deutsche Telekom AG. © 2020 T-Mobile USA, Inc. N205590