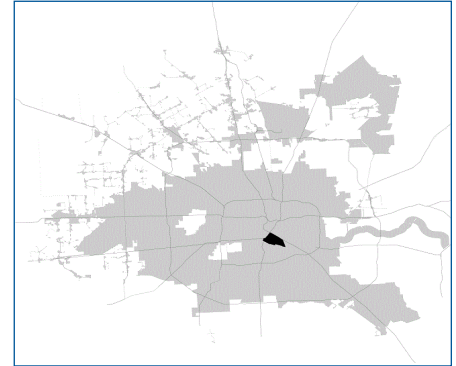


SUPER

Neighborhood

RESOURCE ASSESSMENT



	Super Neighborhood		Houston	
Pop. characteristics	2000	2015	2000	2015
Total population	15,463	14,295	1,953,631	2,217,706
Persons per sq. mile	5,351	4,941	3,166	3,314
Age of Population				
Under 5 years	7%	4%	8%	8%
5- 17 years	18%	12%	19%	17%
18- 64 years	64%	76%	64%	65%
65 and over	11%	8%	9%	10%
Ethnicity				
Non Hispanic Whites	7%	13%	31%	26%
Non Hispanic Blacks	79%	67%	25%	22%
Hispanics	10%	14%	37%	44%
Non Hispanic Asians	2%	5%	6%	7%
Non Hispanic Others	2%	1%	1%	1%
Income				
Under \$25,000	69%	51%	33%	27%
\$25,001 to \$50,000	20%	22%	31%	25%
\$50,001 to \$100,000	9%	17%	24%	26%
Over \$100,001	2%	10%	12%	22%
Median Household Income	\$14,493	\$40,523	\$36,616	\$46,187
Educational Status				
No Diploma	44%	22%	30%	23%
High School Diploma	27%	25%	20%	23%
Some College	17%	30%	23%	24%
Bachelor's or Higher	12%	23%	27%	31%
Housing and Households				
Total housing units	6,350	6,024	782,378	909,336
Occupied	82%	74%	92%	88%
Vacant	18%	26%	8%	12%
Total households	5,231	4,458	717,945	799,714
Family households	2,782	2,119	457,549	491,778
Median Housing Value	\$49,037	\$148,074	\$79,300	\$131,700

Description

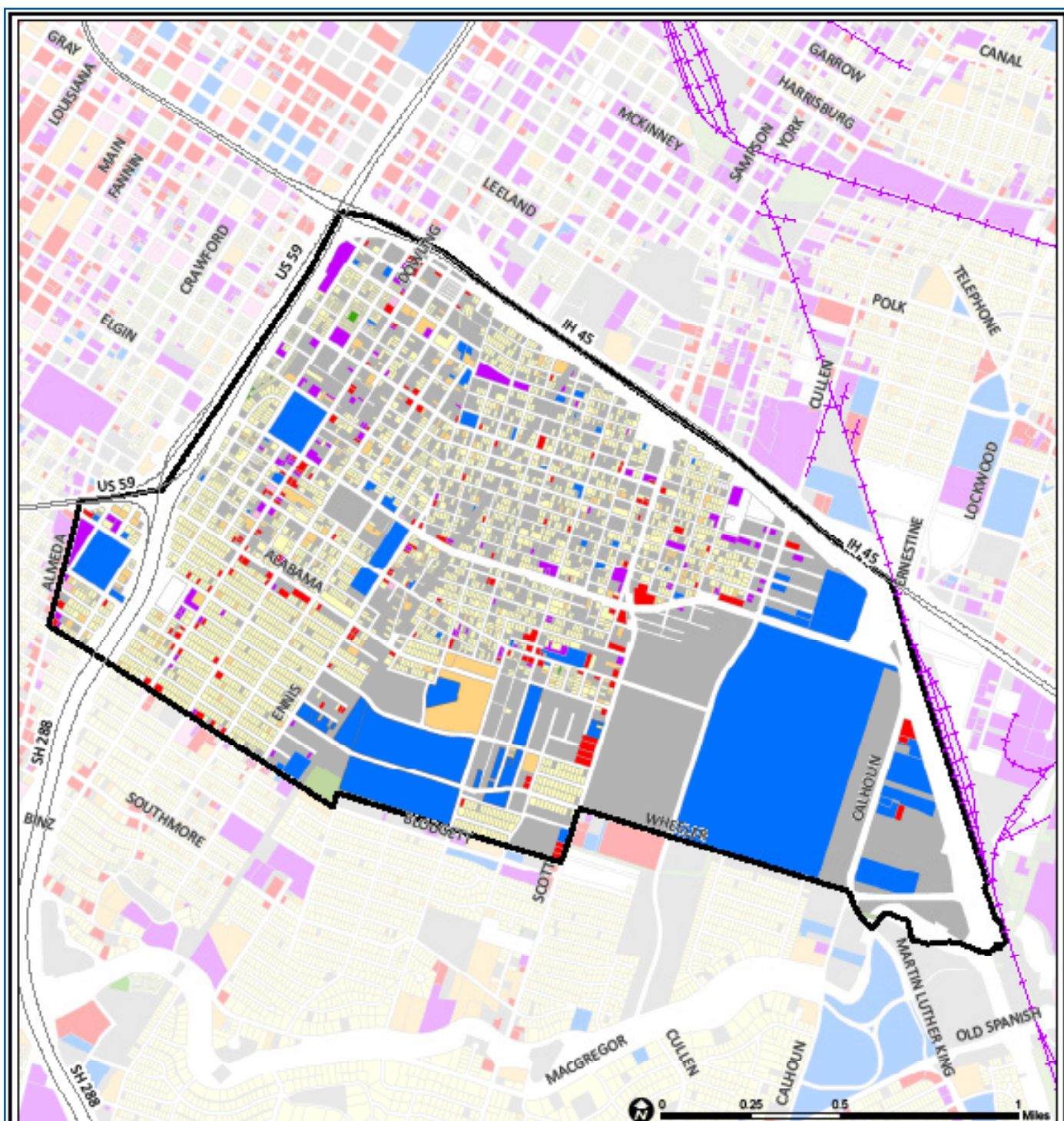
Greater Third Ward is the home of some of the most important institutions in Houston's African-American community, including Texas Southern University, Riverside Hospital, and dozens of prominent churches. Originally a small community of shotgun style houses and modest frame homes, over time the area called Third Ward expanded to the south into neighborhoods such as Washington Terrace. By the mid 1950s, the growing African-American middle class found more substantial brick homes and duplexes in areas formerly reserved for Whites. Neighborhood household income has not kept pace with the rest of the City; however, recently there has been some revival along Scott.

Highlights

- ✓ Houston City Council District D
- ✓ Houston Independent School District
- ✓ 8 Police beats (includes bordering beats)
- ✓ 1,851 acres (2.89 sq. miles)



**PLANNING &
DEVELOPMENT
DEPARTMENT**



Greater Third Ward: Land Use

Freeway	Commercial	Parks and Open Space
Rail Road	Office	Undeveloped
Super Neighborhood Boundary	Industrial	Agricultural Production
Single-family Residential	Public and Institutional	Open Water
Multi-family Residential	Transportation and Utilities	Unknown

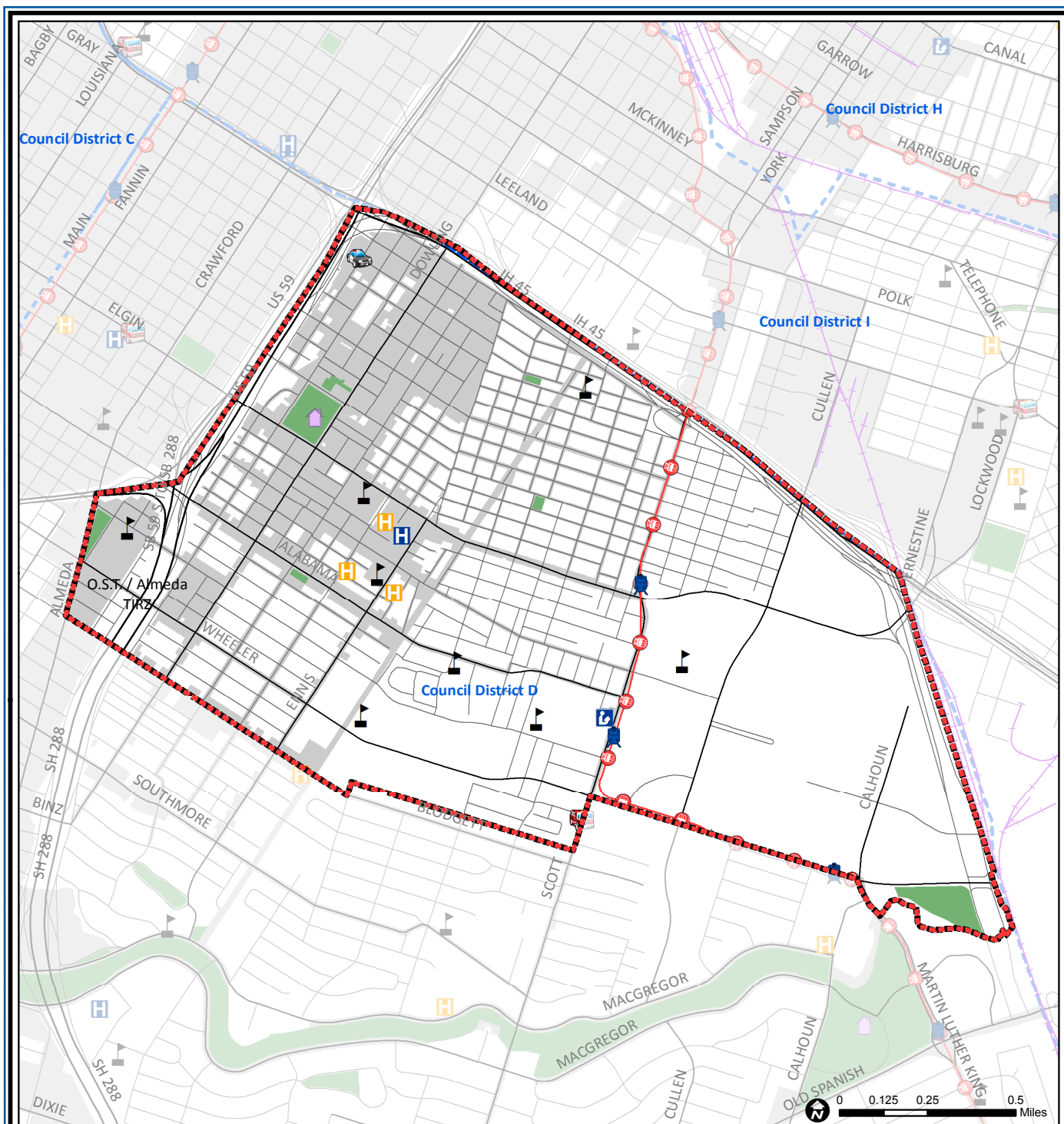
Source: City of Houston GIS Database,
Harris County Appraisal District

Date: November 13, 2017

This map is made available for reference purposes only and should not be substituted for a survey product. The City of Houston will not accept liability of any kind in conjunction with its use.



**PLANNING &
DEVELOPMENT
DEPARTMENT**



Greater Third Ward: Public Facilities

	Super Neighborhood Boundary		Airports		Rail Road
	Community Centers		Harris County Hospitals		Metro Rail Stations
	Fire Station		Private Hospitals		Metro Rail Line
	Police Station		Other Health Facilities		Parks
	School		Library		TIRZ

Source: City of Houston GIS Database

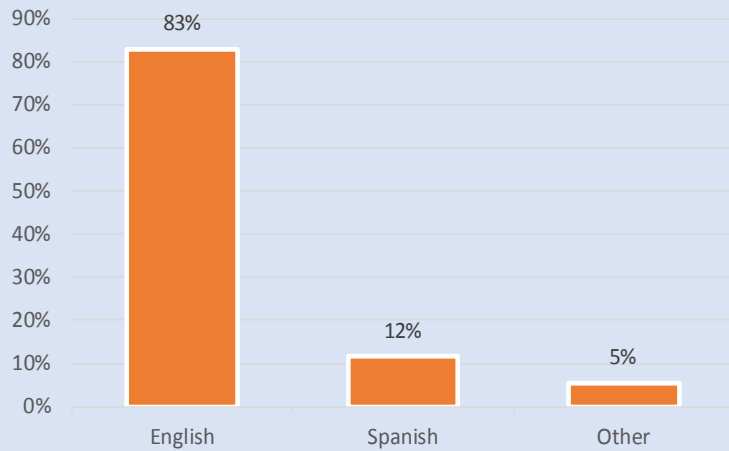
Date: October 2017

This map is made available for reference purposes only and should not be substituted for a survey product. The City of Houston will not accept liability of any kind in conjunction with its use.

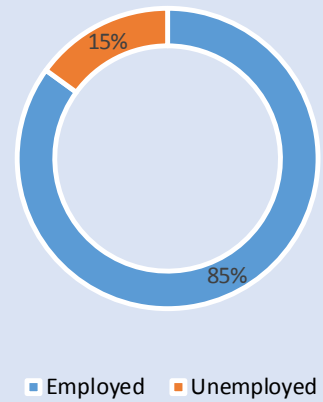


**PLANNING &
DEVELOPMENT
DEPARTMENT**

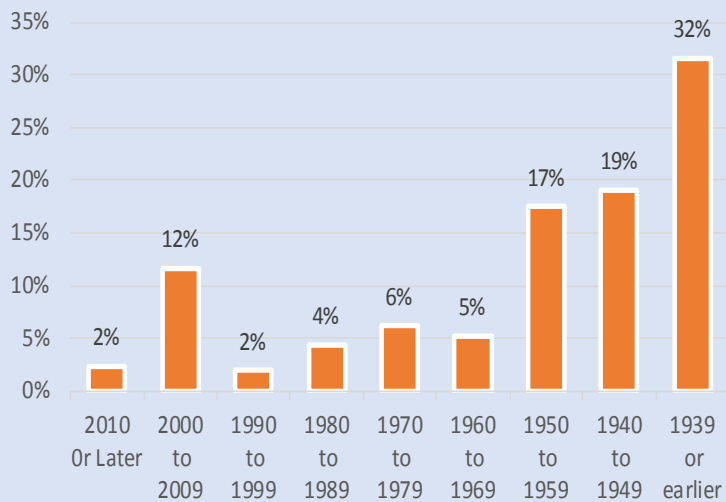
Language Spoken at Home



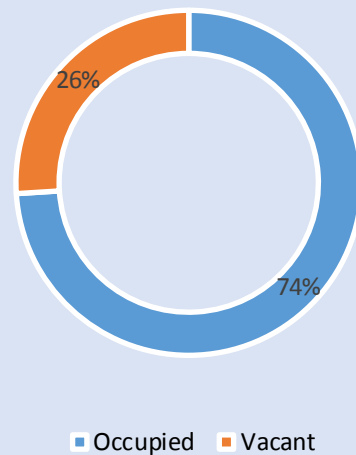
Employment Status



Housing Units by Year Built



Housing Occupancy



Source: U.S. Census Bureau, 2000
American Community Survey, 2011-2015 Estimates



**PLANNING &
DEVELOPMENT
DEPARTMENT**