

PUBLIC HEARING REPORT

G: Fort Bend Major Thoroughfare Plan Amendments

APPLICANT: Fort Bend County Engineering Department

KEY MAP:
JURISDICTION: Fort Bend

LAMBERT:
DISTRICT/PRECINCT:

PROPOSAL:

Fort Bend County adopted an updated Major Thoroughfare Plan on February 10, 2015. The classification of many roads changed with the adopted plan. This amendment request will bring the Fort Bend MTP and Major Thoroughfare and Freeway Plan in conformance.

No.	Street	Street Segment	Amendment Request
1	Westridge Creek Lane	FM 1463 to Cinco Trace Drive	Add Westridge Creek Lane between FM 1463 and Cinco Trace Drive as a Minor Collector (MN-2-60)
2	Greenbusch Road	Gaston Road to Westheimer Parkway	Add Greenbusch Road between Gaston Road and Westheimer Parkway as a Minor Collector (MN-2-60)
3	Pine Mill Ranch Drive	FM 1463 to Spring Green Boulevard	Add Pine Mill Ranch Drive between FM 1463 and Spring Green Boulevard as a Major Collector (MJ-2-60)
4	Ranch Point Drive	Pine Mill Ranch Drive to South Fry Road	Add Ranch Point Drive between Pine Mill Ranch Drive and South Fry Road as a Major Collector (MJ-2-60)
5	Cinco Terrace Drive	Cinco Ranch Boulevard to FM 1093	Add Cinco Terrace Drive between Cinco Ranch Boulevard and FM 1093 as a Major Collector (MJ-2-60)
6a	Canyon Fields Drive	FM 1093 to east of Starling Creek Drive	Add Canyon Fields Drive between FM 1093 and the north-south easement east of Starling Creek Drive as a Major Collector (MJ-2-60)
6b	Canyon Fields Drive	East of Starling Creek Drive to FM 723	Add Canyon Fields Drive between the north-south easement east of Starling Creek Drive and FM 723 as a Major Collector (MJ-4-100)
6c	Canyon Fields Drive	FM 723 to Rancho Bella Parkway	Add Canyon Fields Drive between FM 723 and Rancho Bella Parkway as a Major Collector (MJ-2-60)
7	Rancho Bella Parkway	Bellaire Boulevard to West Bellfort Avenue	Add Rancho Bella Parkway between Bellaire Boulevard and West Bellfort Avenue as a Major Collector (MJ-2-60)
8	Commercial Center Boulevard	Cinco Ranch Boulevard to Westheimer Parkway	Add Commercial Center Boulevard between Cinco Ranch Boulevard and Westheimer Parkway as a Major Collector (MJ-4-100)
9	Cinco Crossing Lane	Cinco Ranch Boulevard to South Fry Road	Add Cinco Crossing Lane between Cinco Ranch Boulevard and South Fry Road as a Minor Collector (MN-2-60)
10	Canal Road	FM 1093 to Bellaire Boulevard	Add Canal Road between FM 1093 and Bellaire Boulevard as a Major Collector (MJ-2-60)
11a	Bella Terra Parkway	Katy Gaston Road to Canal Road	Add Bella Terra Parkway between Katy Gaston Road and Canal Road as a Major Collector (MJ-2-60)
11b	Bella Terra Parkway	Canal Road to SH 99	Add Bella Terra Parkway between Canal Road and SH 99 as a Major Collector (MJ-4-80)

PUBLIC HEARING REPORT

12	Lakemont Bend Lane/Lakemont Pointe Drive	FM 1093 to Beechnut Road	Add Lakemont Bend Lane/Lakemont Pointe Drive between FM 1093 and Beechnut Road as a Major Collector (MJ-2-60)
13	Brandt Lane	Holmes Road to Precinct Line Road	Reclassify Brandt Lane between Holmes Road and Precinct Line Road from a Major Thoroughfare (T-4-100) to a Major Collector (MJ-2-60)
14	Clayhead Road	Holmes Road to Precinct Line Road	Add Clayhead Road between Holmes Road and Precinct Line Road as a Minor Collector (MN-2-60)
15	Robertson Road	FM 723 to Holmes Road	Add Robertson Road between FM 723 and Holmes Road as a Minor Collector (MN-2-60)
16	Skinner Lane/Precinct Line Road	Peek Road extension to COH ETJ line	Add Skinner Lane/Precinct Line Road between Peek Road and the COH ETJ line as a Major Collector (MJ-2-60)
17	Farmer Road	Mason Road to COH ETJ line	Add Farmer Road between Mason Road and the COH ETJ line as a Minor Collector (MN-2-60)
18	West Bellfort Avenue	FM 723 to Peek Road	Add West Bellfort Avenue between FM 723 and Peek Road as a Major Thoroughfare (T-4-120)
19	Katy Gaston Road	Bellaire Boulevard to Holmes Road	Add Katy Gaston between Bellaire Boulevard and Holmes Road as a Major Thoroughfare (T-4-120)
20a	Clodine Road	FM 1464 to West Bellfort Avenue	Reclassify Clodine Road between FM 1464 and W Bellfort Avenue from a Major Thoroughfare (T-4-100) to a Major Collector (MJ-2-60)
20b	Clodine Road	West Bellfort Avenue to Denver Miller Road	Add Clodine Road between West Bellfort Avenue and Denver Miller Road as a Major Collector (MJ-2-60)
21	Denver Miller Road	Clodine Road to FM 1464	Add Denver Miller Road between Clodine Road and FM 1464 as a Major Collector (MJ-2-60)
22	Westmoor Drive	FM1093 to Bellaire Boulevard	Reclassify Westmoor Drive between FM 1093 and Bellaire Boulevard from a Major Thoroughfare (T-4-100) to a Major Collector (MJ-2-60)
23	West Oaks Village Drive	FM 1464 to Westmoor Drive	Add West Oaks Village Drive between FM 1464 and Westmoor Drive as a Minor Collector (MN-2-60)
24	Madden Road	Harlem Road to Clodine Road	Add Madden Road between Harlem Road and Clodine Road as a Major Collector (MJ-2-60)
25	Delta Lake Drive/Waterside Estates Drive/Lost Lake Drive	Mason Road to Harvest Corner Drive	Add Delta Lake Drive/Waterside Estates Drive/Lost Lake Drive between Mason Road and Harvest Corner Drive as a Major Collector (MJ-2-60)
26	Harvest Home Drive	Harvest Corner Drive/Harvest Garden Boulevard to COH ETJ line	Add Harvest Home Drive between Harvest Corner Drive/Harvest Garden Boulevard and the COH ETJ line as a Major Collector (MJ-2-60)
27	Harvest Corner Drive	Harlem Road to Harvest Home Drive	Add Harvest Corner between Harlem Road and Harvest Home Drive as a Major Collector (MJ-2-60)
28	Harvest Garden Boulevard	Harvest Home Drive to Harlem Road	Add Harvest Garden Boulevard between Harvest Home Drive and Harlem Road as a Major Collector (MJ-4-100)

PUBLIC HEARING REPORT

29	Old Dixie Road	Harvest Home Drive to COH ETJ line	Add Old Dixie Drive between Harvest Home Drive and the COH ETJ line as a Major Collector (MJ-2-60)
30	Pheasant Creek Drive	FM 1464 to Old Richmond Road	Add Pheasant Creek Drive between FM 1464 and Old Richmond Road as a Minor Collector (MN-2-60)
31	Florence Road	Burney Road to Eldridge Road (FM 1876)	Add Florence Road between Burney Road and Eldridge Road (FM 1876) as a Major Collector (MJ-2-60)
32	Mason Street	Florence Road to West Airport Boulevard	Add Mason Street between Florence Road and West Airport Boulevard as a Minor Collector (MN-2-60)
33a	Winkleman Drive	Fort Bend County Line to Forest Briar Drive	Add Winkleman Drive from the Fort Bend County Line to Forest Briar Drive as a Minor Collector (MN-2-60)
33b	Forest Briar Drive	Winkleman Drive to Gaines Road	Add Forest Briar Drive between Winkleman Drive and Gaines Road as a Minor Collector (MN-2-60)
33c	Gaines Road	Forest Briar Drive to Addicks Clodine Road/Gaines Road	Add Gaines Road between Forest Briar Drive and Addicks Clodine Road/Gaines Road as a Minor Collector (MN-2-60)
34	Vicksburg Boulevard	McHard Road (FM 2234) to COH ETJ line	Add Vicksburg Boulevard between McHard Road (FM 2234) and the COH ETJ line as a Major Thoroughfare (T-4-120)
35	Chasewood Drive	Fondren Road to Hillcroft Avenue	Add Chasewood Drive between Fondren Road and Hillcroft Avenue as a Major Collector (MJ-4-70)
36	Evergreen Street	South Post Oak Boulevard/Colorado Road to FM 521	Add Evergreen Street between South Post Oak Boulevard/Colorado Road and FM 521 as a Minor Collector (MN-2-60)
37	West Sycamore Street/Raab Road	Teal Bend Boulevard to School Road/South Post Oak Boulevard	Add West Sycamore Street/Rabb Road between Teal Bend Boulevard and School Road/South Post Oak Boulevard as a Minor Collector (MN-2-60)
38	Nail Road/Kansas Street/Davis Road	Lake Olympia Parkway to Davis Road	Add Nail Road/Kansas Street/Davis Road between Lake Olympia Parkway and FM 521 as a Major Collector (MJ-2-60)
39	Kentucky Road	Lake Olympia Boulevard and West Dallas Street	Add Kentucky Road between Lake Olympia Boulevard and West Dallas Street as a Minor Collector (MN-2-60)
40	West Dallas Road	South Post Oak Boulevard/Colorado Road to FM 521	Add West Dallas Road between South Post Oak Boulevard/Colorado Road and FM 521 as a Minor Collector (MN-2-60)

Background Information:

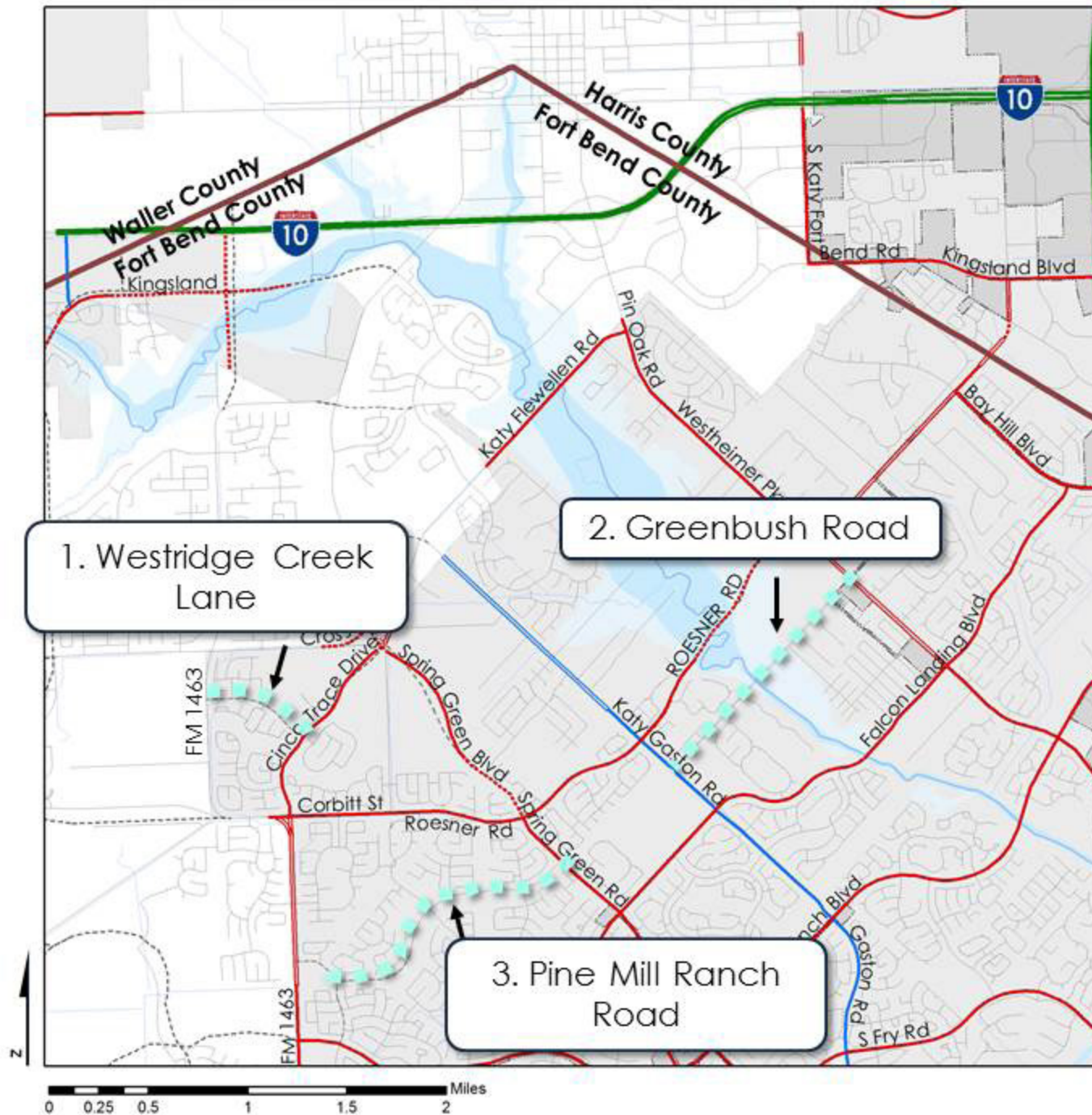
Fort Bend County is submitting 46 Major Thoroughfare and Freeway Plan (MTFP) amendments for consideration by the City of Houston. The Fort Bend County Major Thoroughfare Plan was updated and adopted by Commissioners Court on February 10, 2015. The classification of many roadways changed with the adoption of the 2015 Fort Bend County Major Thoroughfare Plan. The purpose of this amendment request is to bring the classification of roadways on the Houston MTFP, located within Fort Bend County, in conformance with the classification of the roadways on the Fort Bend County Major Thoroughfare Plan.

PUBLIC HEARING REPORT

The 2015 Fort Bend County Major Thoroughfare Plan is the product of a countywide mobility study. The scope of the study included the assessment of population and employment growth in Fort Bend County between 2015 and 2040. The classification of roadways on the Fort Bend County Major Thoroughfare Plan was expanded in 2015 to include collectors in addition to Principal Thoroughfares and Major Thoroughfares, acknowledging that a comprehensive network of roadways is needed to meet future travel demands.

The adopted 2015 Major Thoroughfare Plan reflects input from public and private sector stakeholders, as well as the residents of Fort Bend County. The public was engaged during development of the Plan through stakeholder interviews, a Workshop conducted on the draft Major Thoroughfare Plan at the Commissioners Court meeting on January 13, 2015, which was open to the public, and the posting of the draft Major Thoroughfare Plan map on the Fort Bend County website for public comment from October 2014 until the adoption of the Plan by Commissioner's Court on February 10, 2015.

Request Group 1



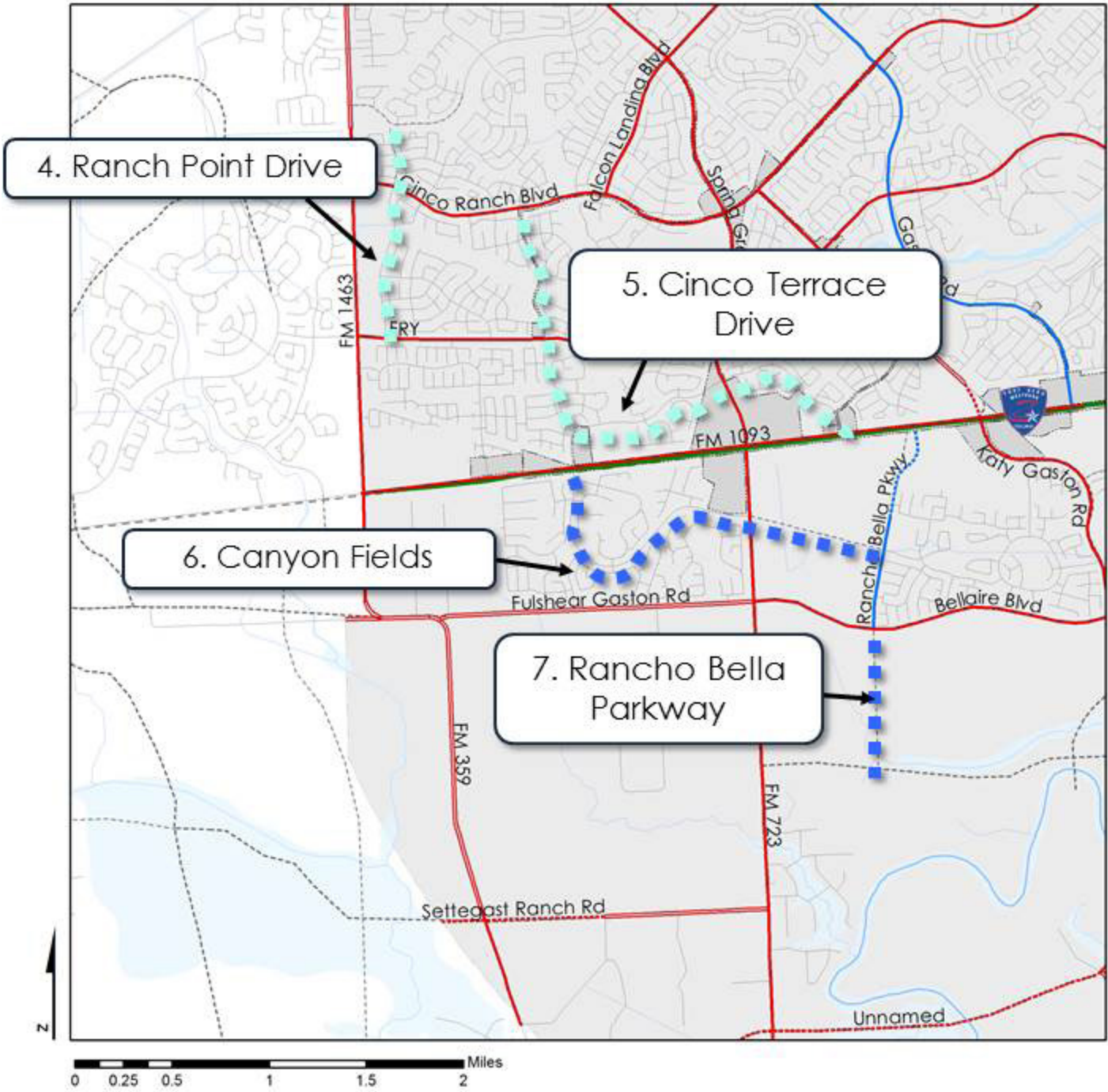
VICINITY MAP



MTFP AMENDMENT REQUEST

RECLASSIFY/ADD

- Freeway
- Major Thoroughfare
- Major Collector
- Minor Collector
- Transit Corridor Street



Request

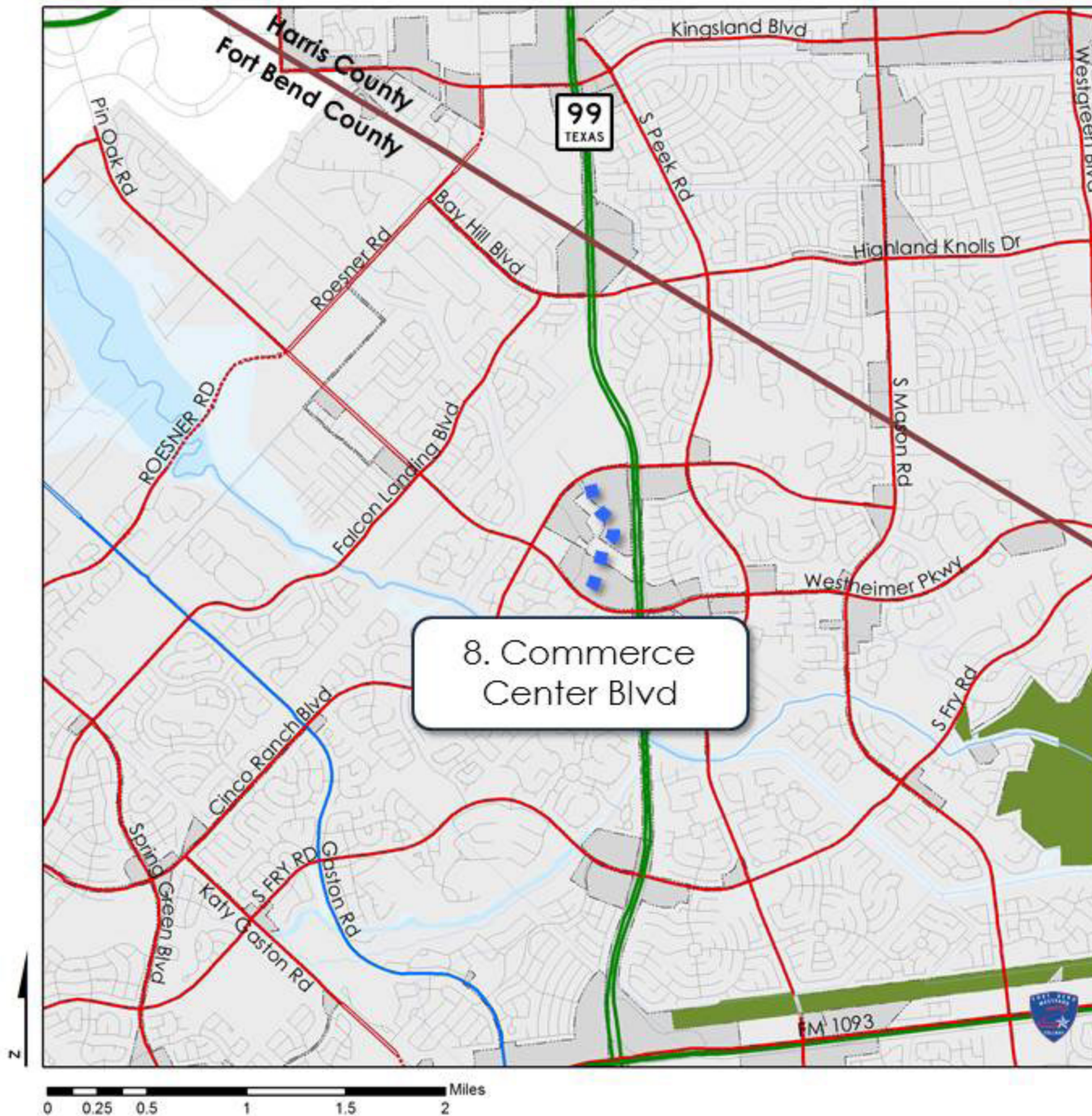
Group 2

VICINITY MAP



MTFP AMENDMENT REQUEST

-  RECLASSIFY/ADD
-  Freeway
-  Major Thoroughfare
-  Major Collector
-  Minor Collector
-  Transit Corridor Street



Request Group 3

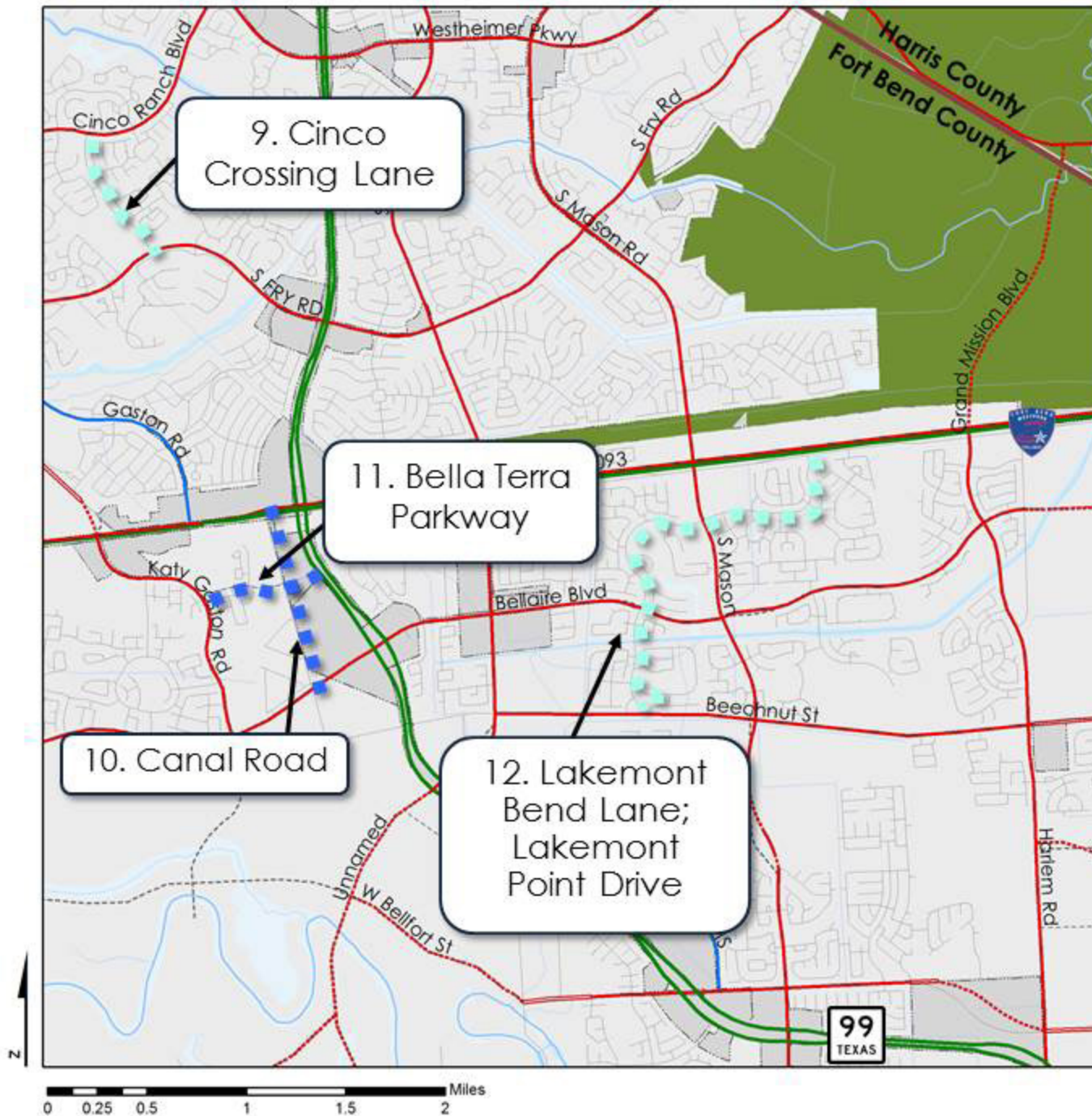
VICINITY MAP



MTFP AMENDMENT REQUEST

RECLASSIFY/ADD

- Freeway
- Major Thoroughfare
- Major Collector
- Minor Collector
- Transit Corridor Street



Request

Group 4

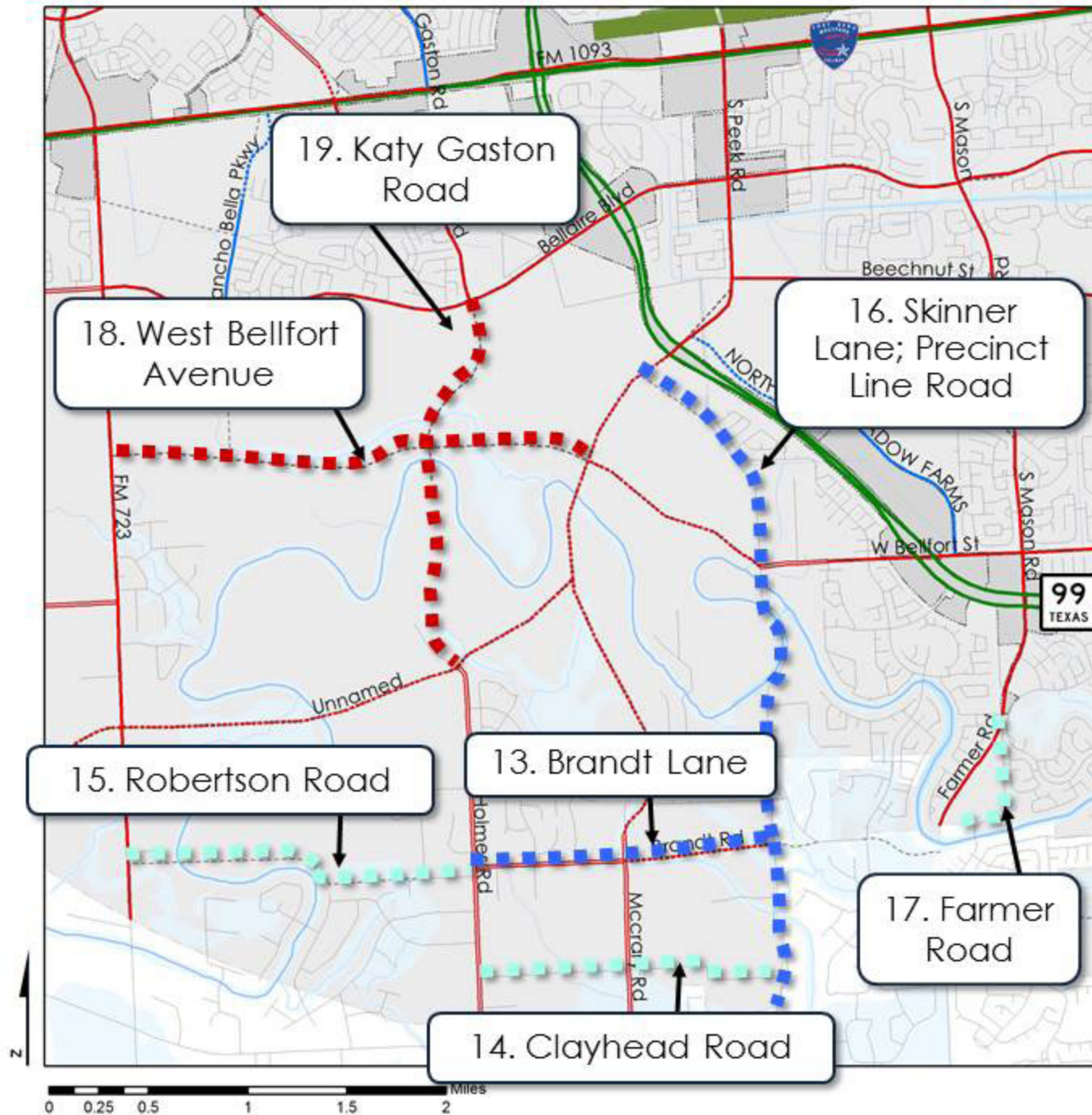
VICINITY MAP



MTFP AMENDMENT REQUEST

-  **RECLASSIFY/ADD**
-  Freeway
-  Major Thoroughfare
-  Major Collector
-  Minor Collector
-  Transit Corridor Street

Request Group 5



VICINITY MAP



MTFP AMENDMENT REQUEST

RECLASSIFY/ADD

- Freeway
- Major Thoroughfare
- Major Collector
- Minor Collector
- Transit Corridor Street



Request

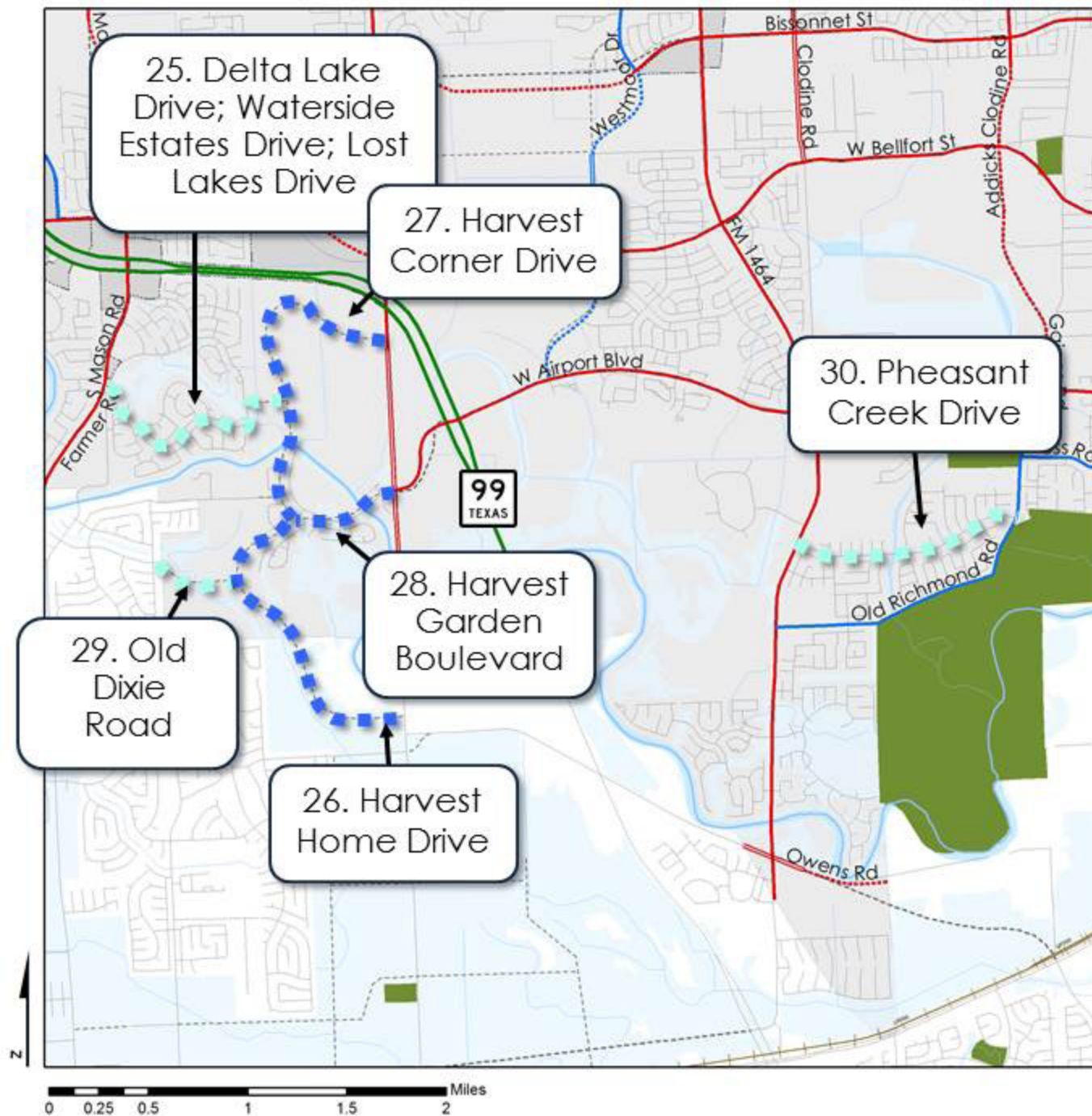
Group 6

VICINITY MAP



MTFP AMENDMENT REQUEST

- RECLASSIFY/ADD
- Freeway
- Major Thoroughfare
- Major Collector
- Minor Collector
- Transit Corridor Street



Request

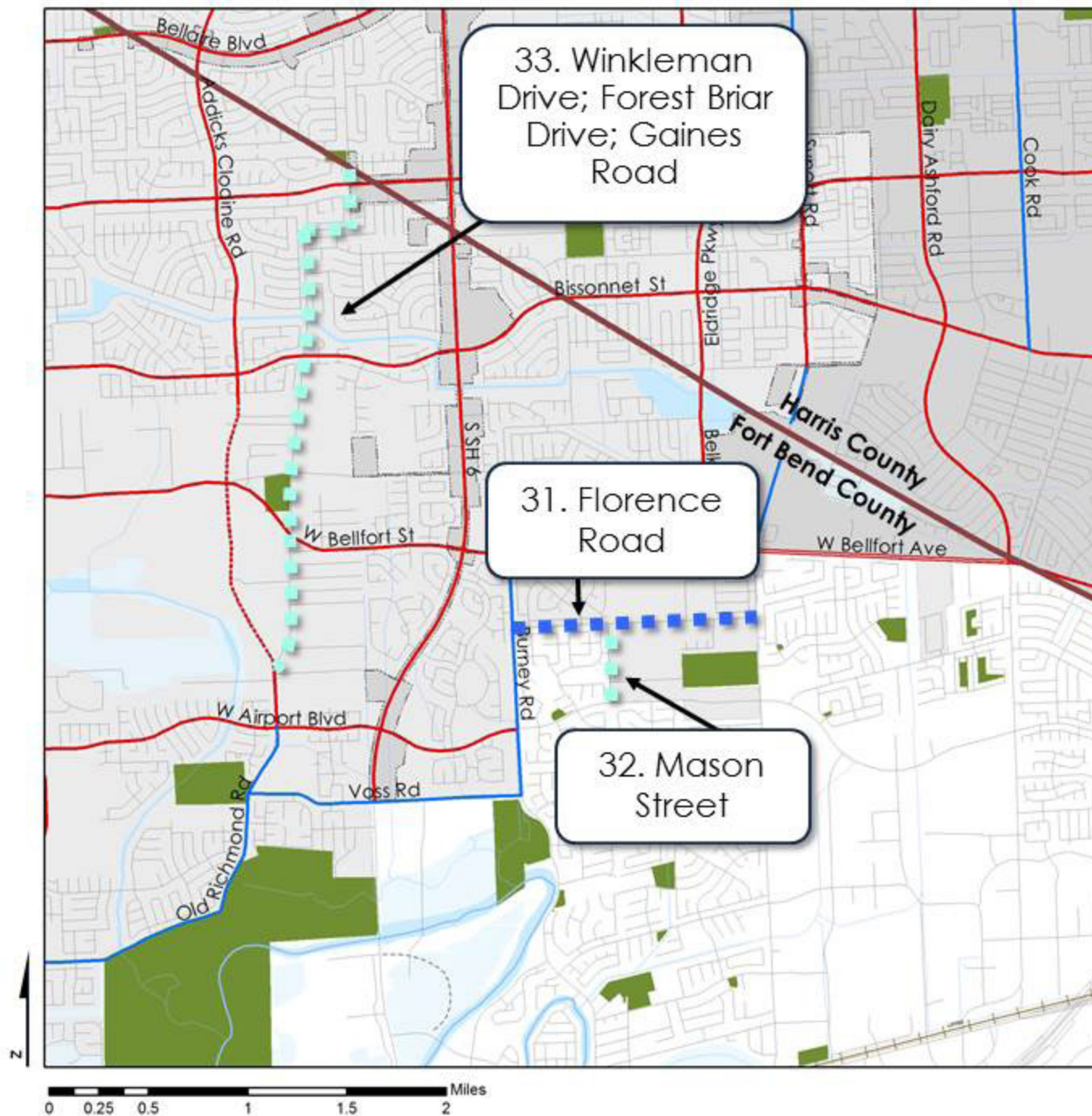
Group 7

VICINITY MAP



MTFP AMENDMENT REQUEST

- RECLASSIFY/ADD
- Freeway
- Major Thoroughfare
- Major Collector
- Minor Collector
- Transit Corridor Street



Request

Group 8

VICINITY MAP



MTFP AMENDMENT REQUEST

RECLASSIFY/ADD

- Freeway
- Major Thoroughfare
- Major Collector
- Minor Collector
- Transit Corridor Street



Request Group 9

VICINITY MAP



MTFP AMENDMENT REQUEST

- RECLASSIFY/ADD
- Freeway
- Major Thoroughfare
- Major Collector
- Minor Collector
- Transit Corridor Street

Request

Group 10

VICINITY MAP



MTFP AMENDMENT REQUEST

-  RECLASSIFY/ADD
-  Freeway
-  Major Thoroughfare
-  Major Collector
-  Minor Collector
-  Transit Corridor Street

