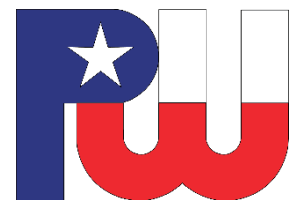


SWAT PROGRAM



SWAT - STORM WATER ACTION TEAM

GOAL: Reduce localized drainage problems throughout the City not directly subject to riverine/ bayou overbank flooding by rehabbing/ upgrading the existing drainage system to improve conveyance of day-to-day storm events and expanding maintenance capabilities.

Project locations will be determined by reviewing 311 calls, nonriverine structural flooding locations, and known areas with drainage concerns. Projects will be developed by investigating and inspecting the system and developing an assessment/work plan for addressing the area(s) of highest need.

STORM SEWERS AND OUTFALLS:

Projects will include replacing collapsed outfalls and storm sewer components, upsizing inlets, replacing inlet plates with grates, re-establish roadway curbs and gutters for re-establishment of flow paths.

ROADSIDE DITCH:

Projects will include regrading of ditches, replacement of culverts not set to proper flowline and clearing.

OFF-ROAD DITCH AND DETENTION PONDS:

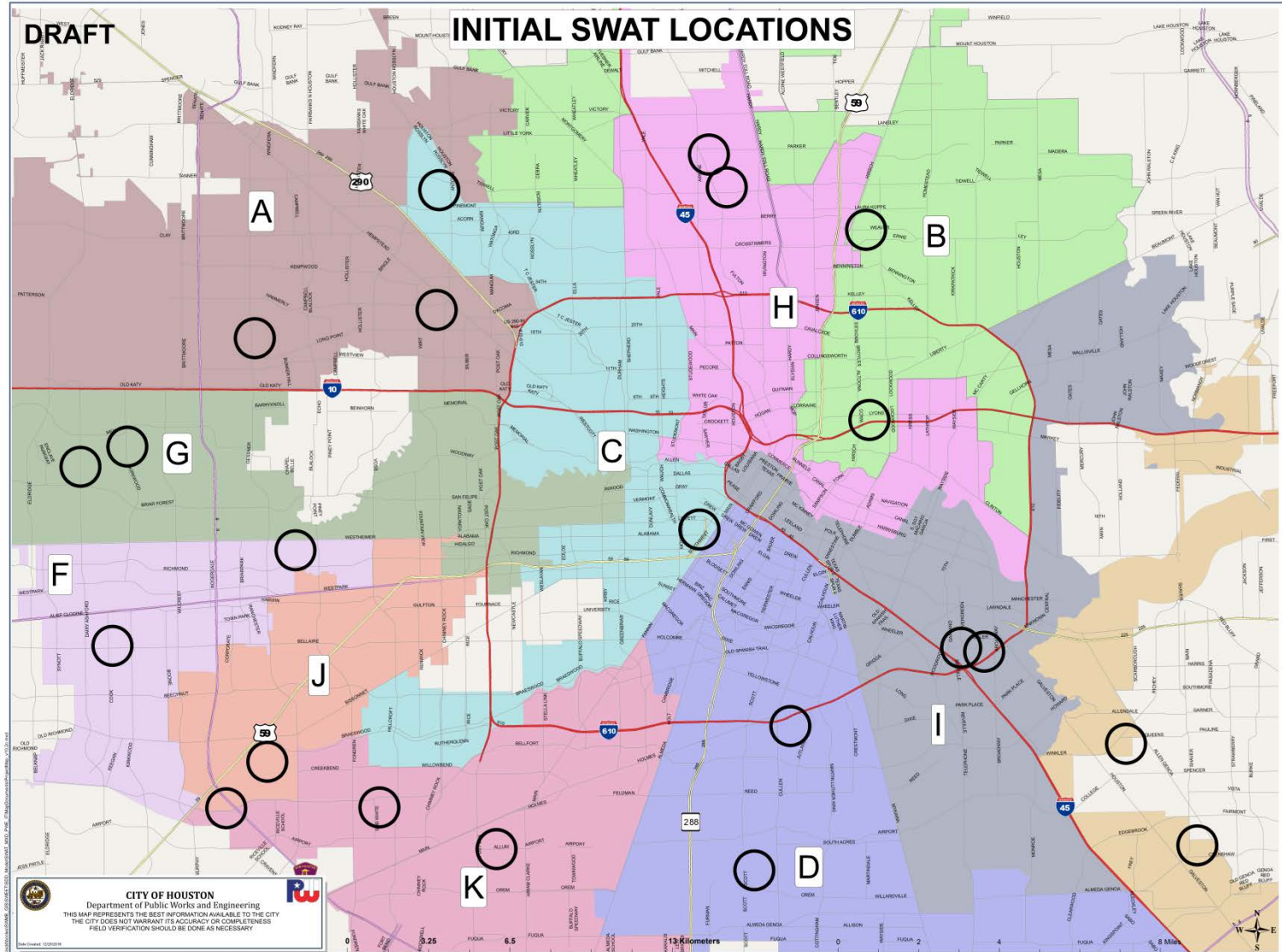
Projects will include clearing and grubbing, regrading and desilting, minor erosion repairs, and mowing.

SUPPORT CONTRACTS REQUIRED:*

- Surveying Contracts
- Professional Engineering Services Contract
- Roadside Ditch Rehab Work Order Contract
- Storm Sewer Work Order Contract
- Clearing and Grubbing Work Order Contract
- Small Contractor Rotation Program

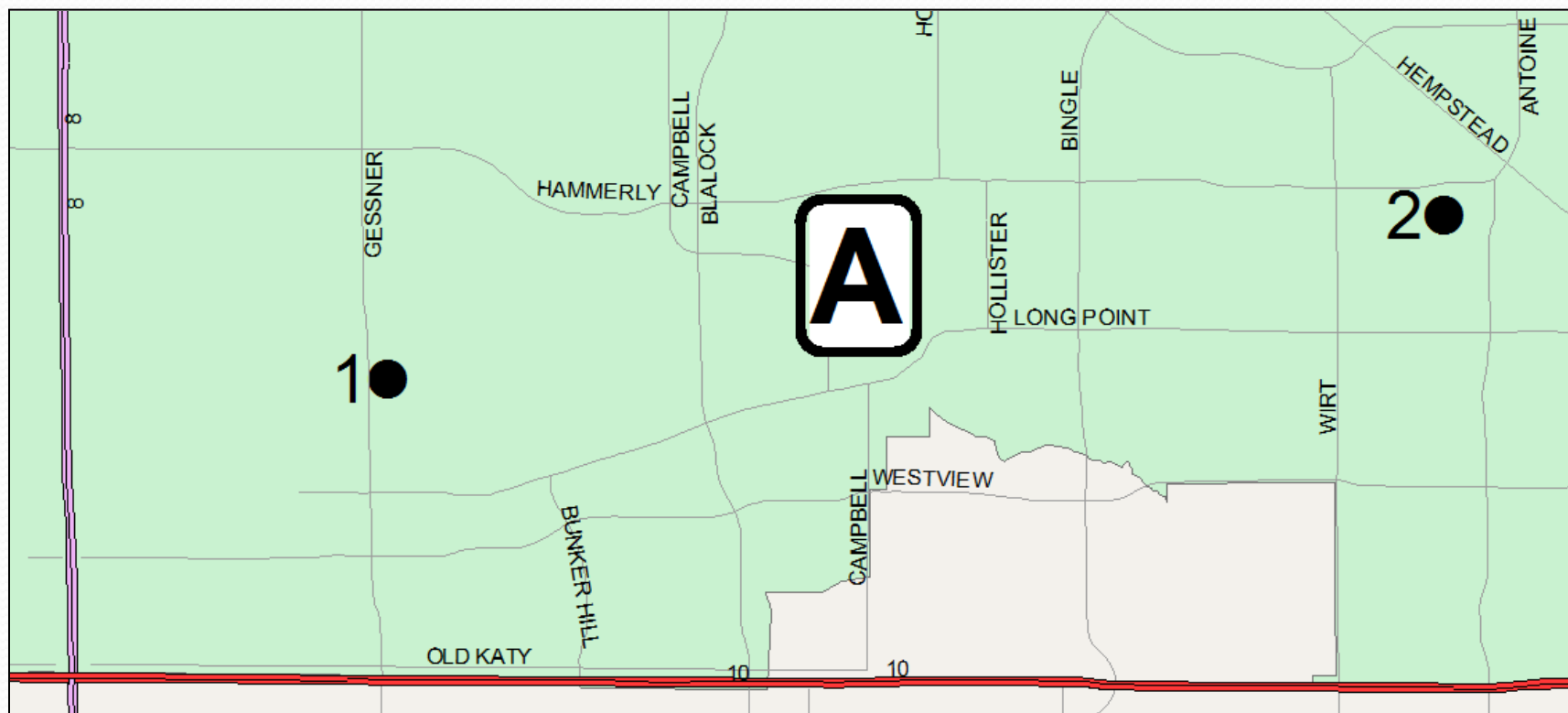
(*Some contracts are existing and some to be modified/ created and awarded.)

SWAT Project Map



Revised

District A



1. 10058 Briarwild Ln.

Drainage Issues:

Culverts undersized, collapsed or not set to proper flow line
Silted ditch flow lines and culverts

2. 2113 Woodvine Dr.

Drainage Issues:

Needs Clear & Grubbing/
Re-establishment
Ditch ID: W138-00-00-A & B

District A – Project 1



10058 Briarwild Ln.

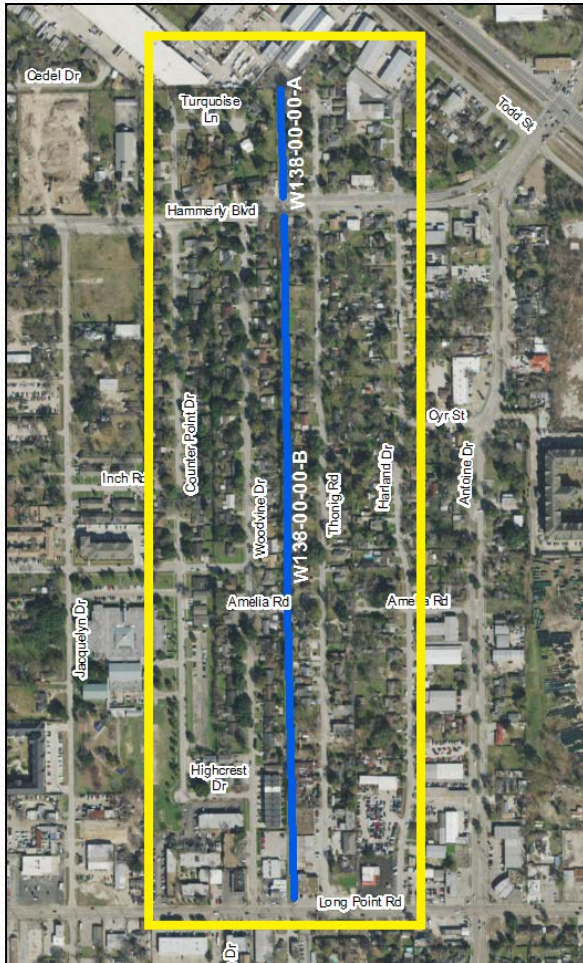
(N - Warwana Rd.; S - Briarwild Ln.;
E - Gessner Rd.; W - Witte Rd.)

Drainage Issues:

Culverts undersized, collapsed or
not set to proper flow line
Silted ditch flow lines and culverts



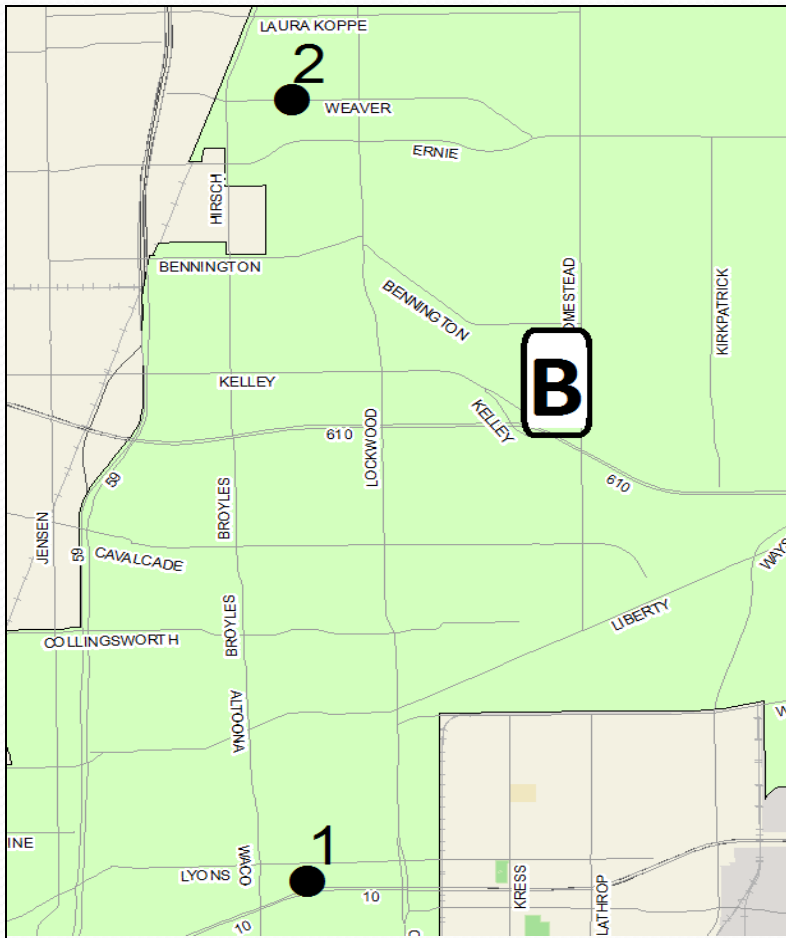
District A – Project 2



**2113 Woodvine Dr.
(from Long Point Rd.
to Turquoise Ln.)**

Drainage Issues:
Needs Clear and Grubbing/
Re-establishment
Ditch ID: W₁₃₈-00-00-A & B

District B



1. Greater Fifth Ward

Drainage Issues:

Culverts undersized, collapsed or not set to proper flow line

Silted ditch flow lines and culverts

2. Trinity/Houston Gardens

Drainage Issues:

Culverts undersized, collapsed or not set to proper flow line

Silted ditch flow lines and culverts

District B – Project 1

Greater Fifth Ward (N- Farmer St.; S- Chisum St.; E - Wipprecht St. & W - Yates St.)

Drainage Issues: Culverts undersized, collapsed or not set to proper flow line
Silted ditch flow lines and culverts

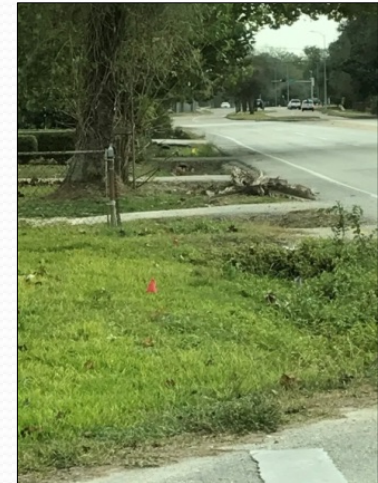
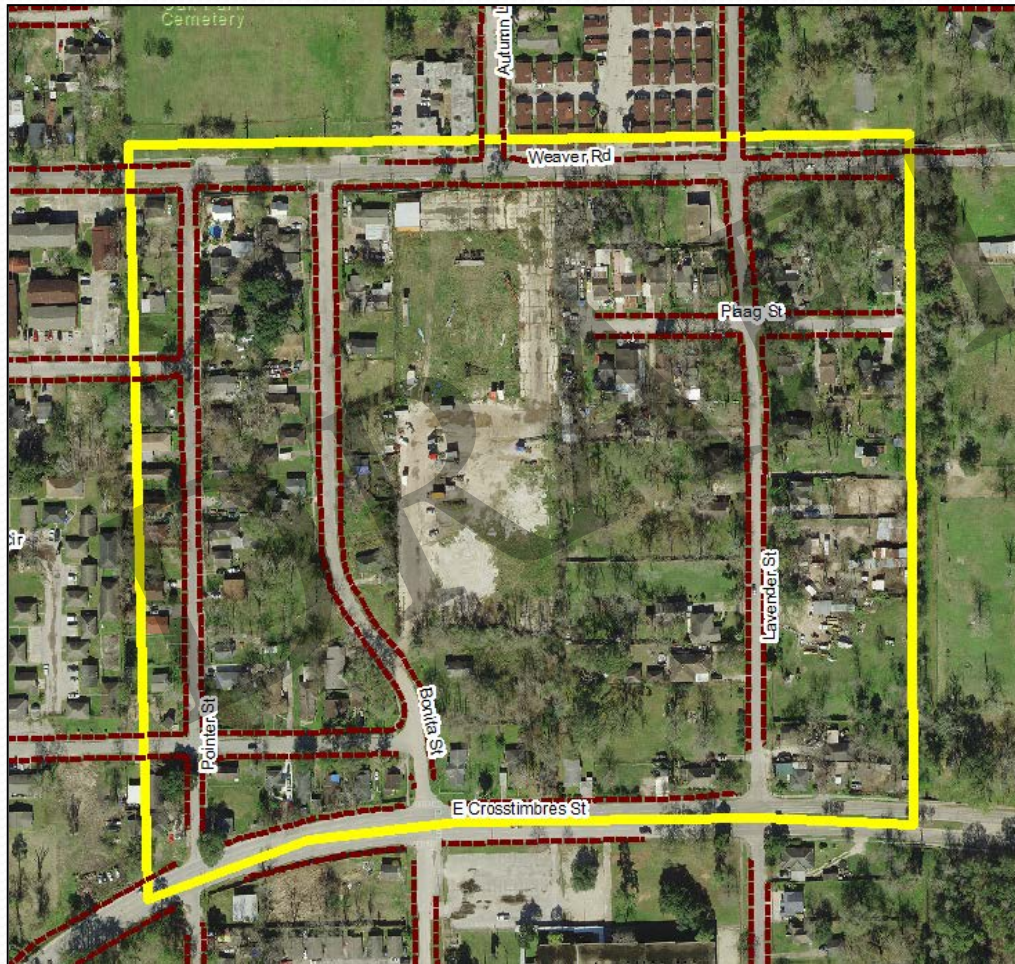


District B – Project 2

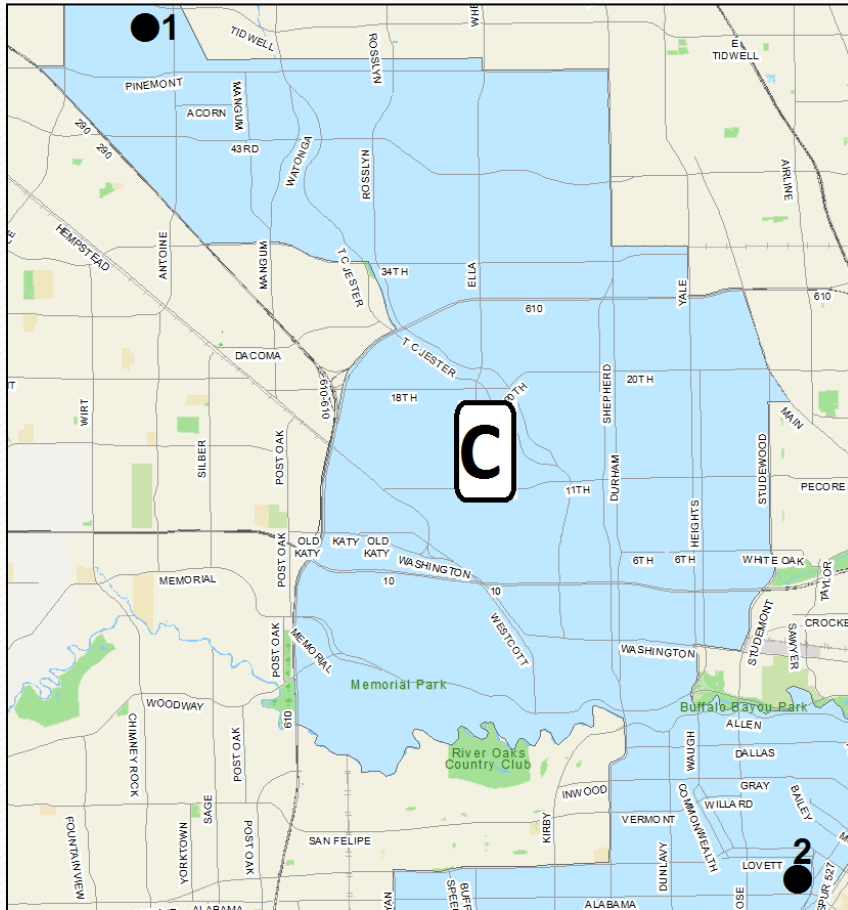
Trinity/Houston Gardens (N - Weaver Rd.; S - Crosstimbers St.; E - Lavender St.; W - Painter St.)

Drainage Issues: Culverts undersized, collapsed or not set to proper flow line

Silted ditch flow lines and culverts



District C



1. 5942 Greenmont Dr.

Drainage Issues:

36-inch outfall has collapsed and caused cave-in

2. 3600 Flora St.

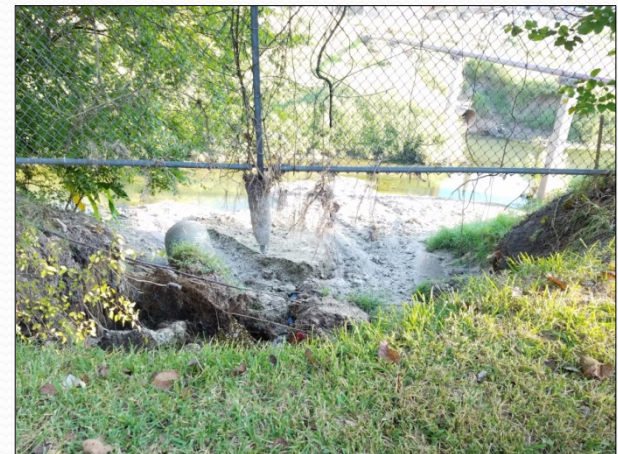
Drainage Issues:

Existing culvert/grate failure blocking proper drainage

District C – Project 1

5942 Greenmont Dr.

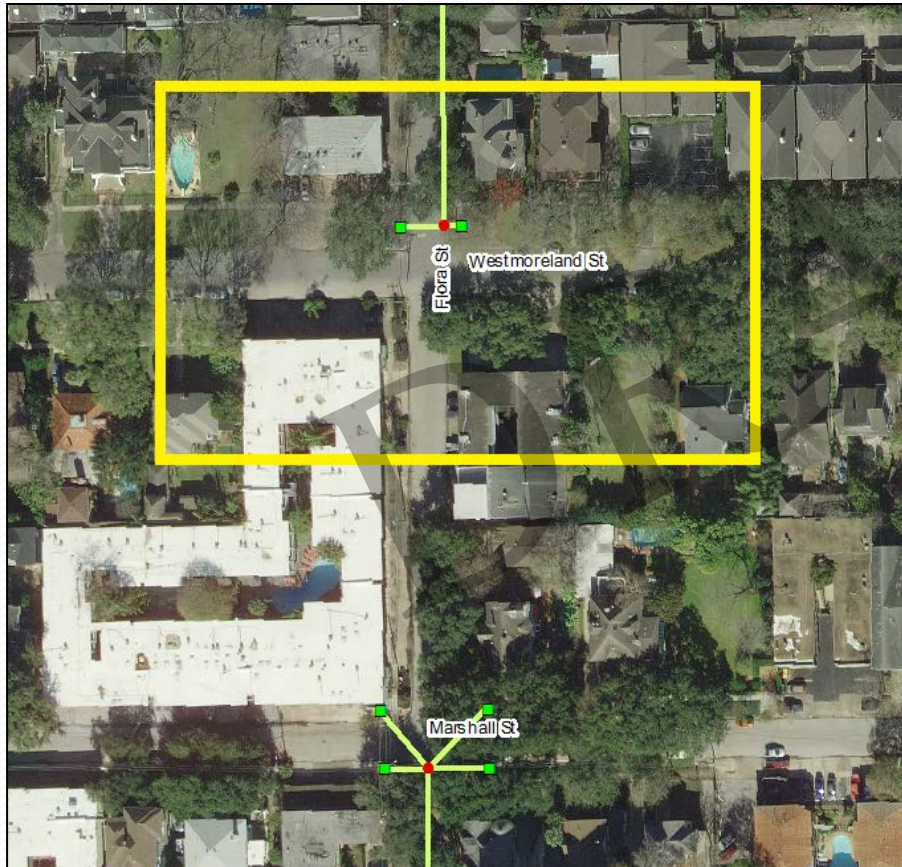
Drainage Issues: 36-inch outfall has collapsed and caused cave-in



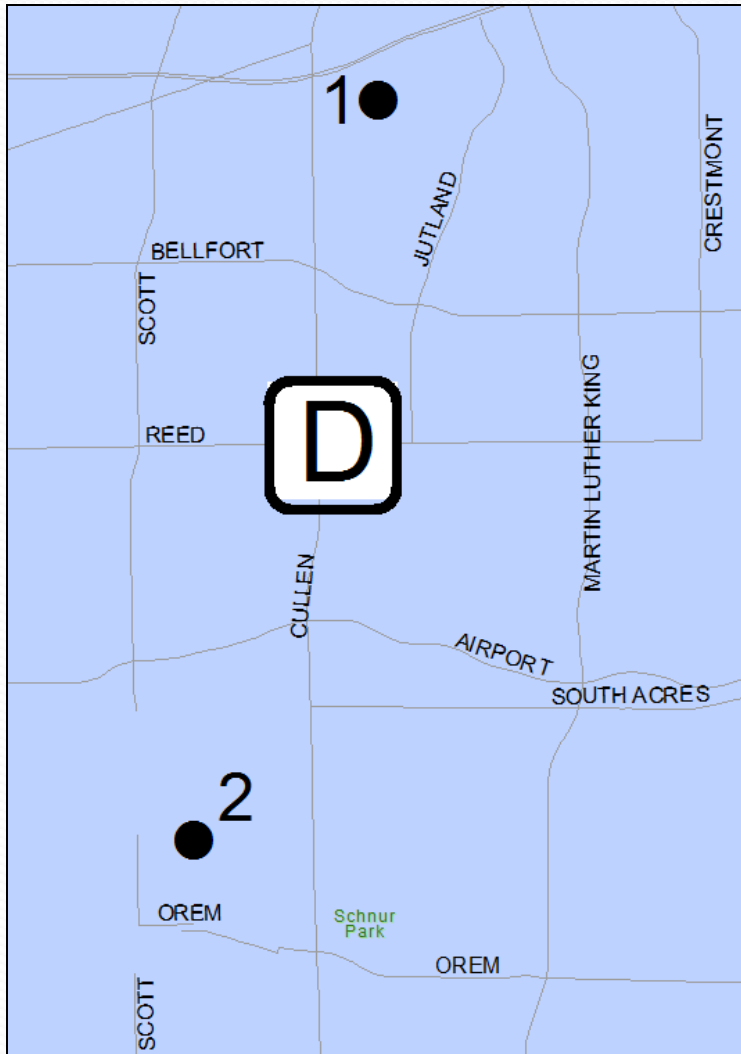
District C – Project 2

3600 Flora St.

Drainage Issues: Existing culvert/grate failure blocking proper drainage



District D



1. 7300 Calais Rd.

Drainage Issues:

Needs Clear and Grubbing/ Re-establishment
Ditch ID: DUNK-00-05-A, B

2. 4007 Botany Ln.

Drainage Issues:

Needs Clear and Grubbing/ Re-establishment
Ditch ID: C127-01-00-A

District D – Project 1

7300 Calais Rd. (from Calais Rd. to St. Lo Rd.)

Drainage Issues: Needs Clear and Grubbing/ Re-establishment

Ditch ID: DUNK-00-05-A, B



District D – Project 2

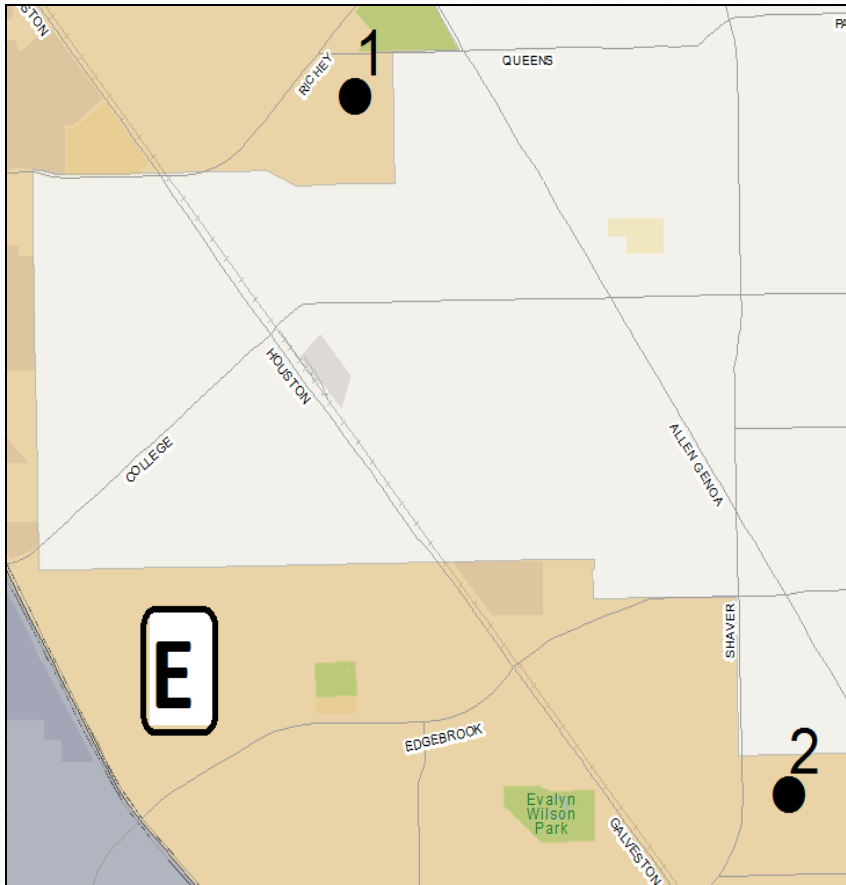
4007 Botany Ln.

Drainage Issues: Needs Clear and Grubbing/ Re-establishment

Ditch ID: C127-01-00-A



District E



1. 2440 Albright Dr.

Drainage Issues:

Needs Clear and Grubbing/ Re-establishment
Ditch ID: C106-05-00-A

2. 531 Keith Ave.

Drainage Issues:

Needs Clear and Grubbing/ Re-establishment
Ditch ID: C106-08-04-A

District E – Project 1

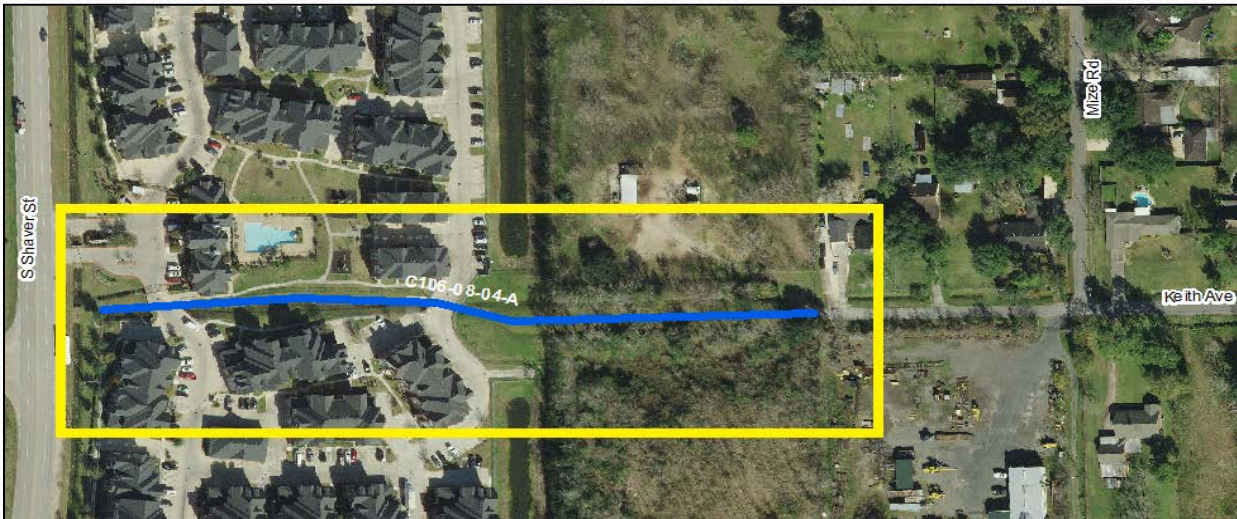
2440 Albright Dr. (from Leprechaun St. to Martinville Dr.)

Drainage Issues: Needs Clear and Grubbing/ Re-establishment

Ditch ID: C106-05-00-A

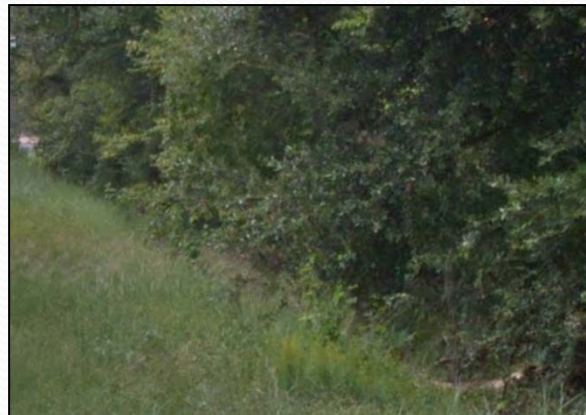


District E – Project 2

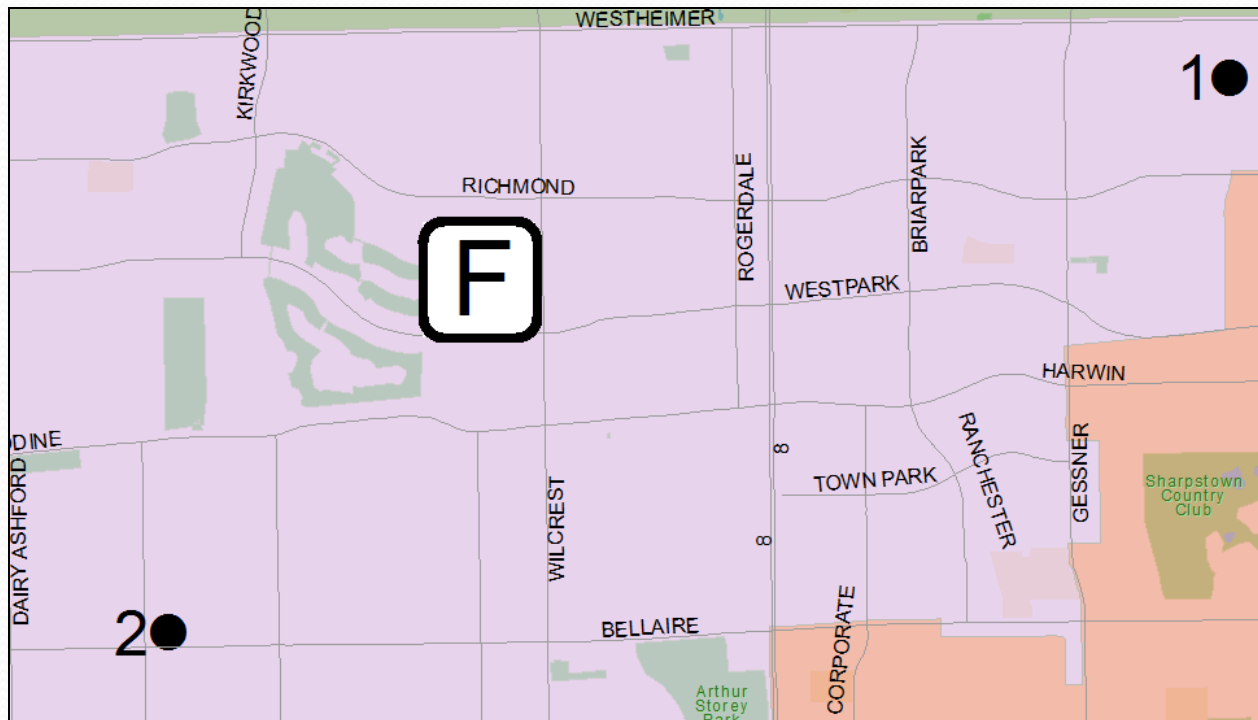


531 Keith Ave. (From S. Shaver St. to Mize Rd.)

Drainage Issues:
Needs Clear and Grubbing/
Re-establishment
Ditch ID: C106-08-04-A



District F



1. Tanglewilde - Westmont Area

Drainage Issues:

Needs Clear and Grubbing/
Re-establishment
Ditch ID: W147-00-00-A

2. Bellaire West Detention Pond

Drainage Issues:

Needs Clear and Grubbing/
Re-establishment

District F – Project 1

Tanglewilde - Westmont Area (from Jeanetta St. to Westerland Dr.)

Drainage Issues: Needs Clear and Grubbing/ Re-establishment

Ditch ID: W147-00-00-A



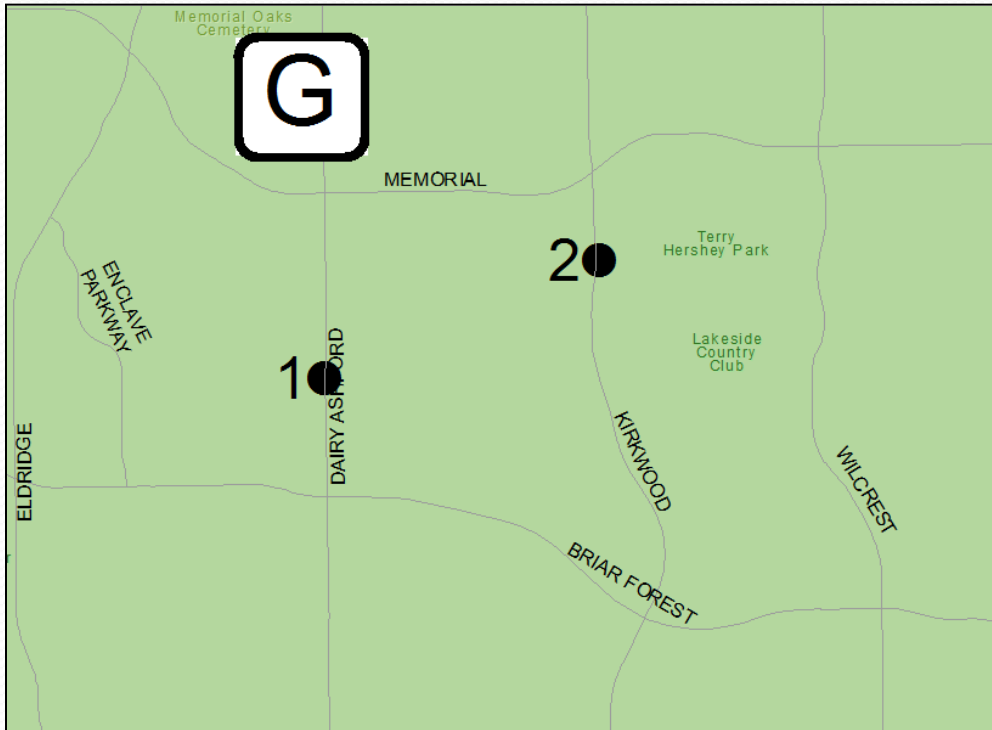
District F – Project 2

Bellaire West Detention Pond

Drainage Issues: Needs Clear and Grubbing/ Re-establishment



District G



1. 614 Woodbend Ln.

Drainage Issues:

120-inch storm sewer line has eroded at bottom and caused multiple small cave-ins

2. 1209 S Dairy Ashford Rd.

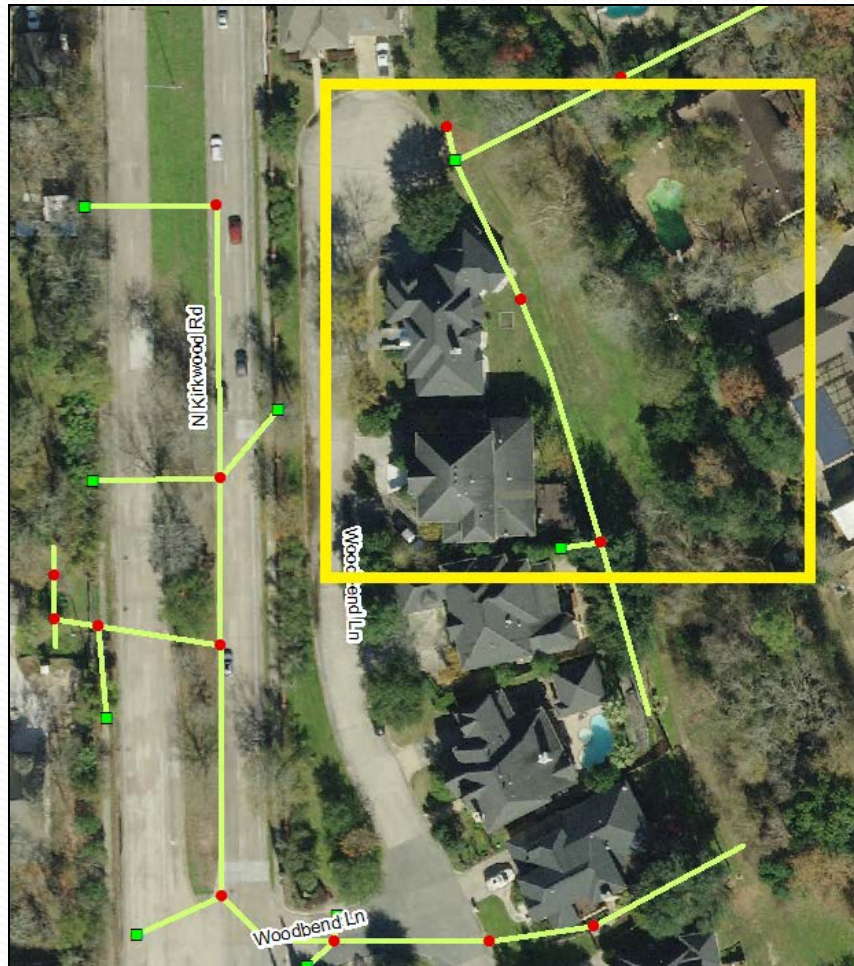
Drainage Issues:

36-inch outfall has collapsed at Terry Hershey Park and caused a cave-in

District G – Project 1

614 Woodbend Ln.

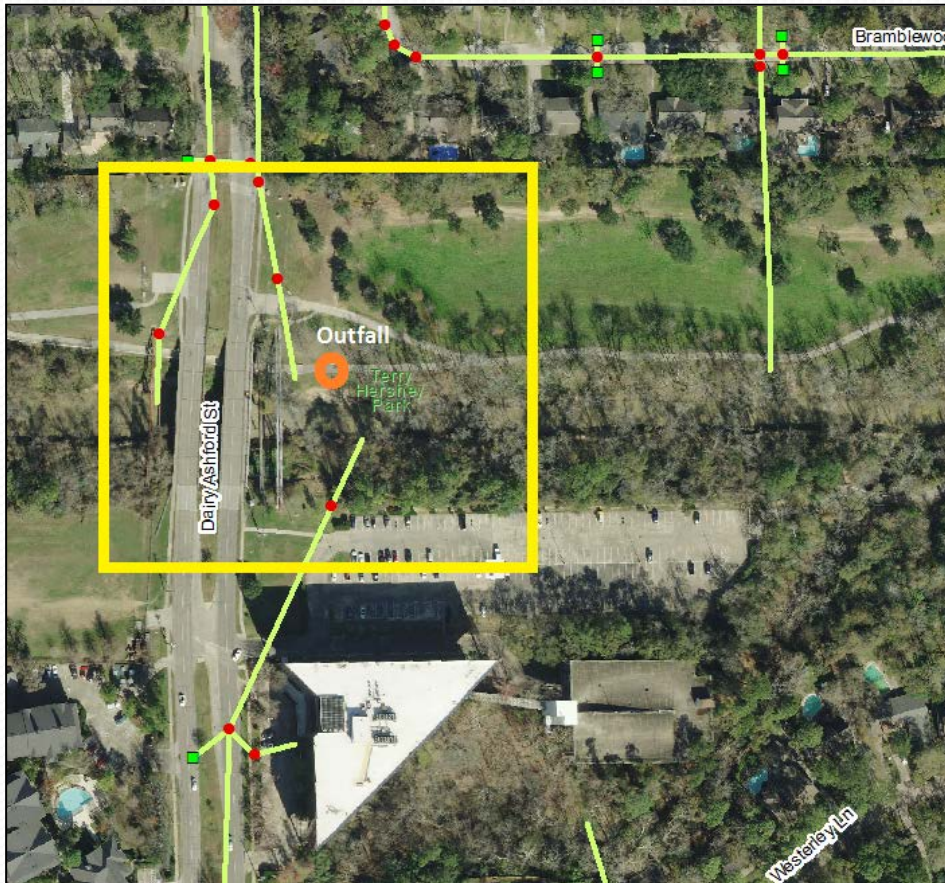
Drainage Issues: 120-inch storm sewer line has eroded at bottom and caused multiple small cave-ins



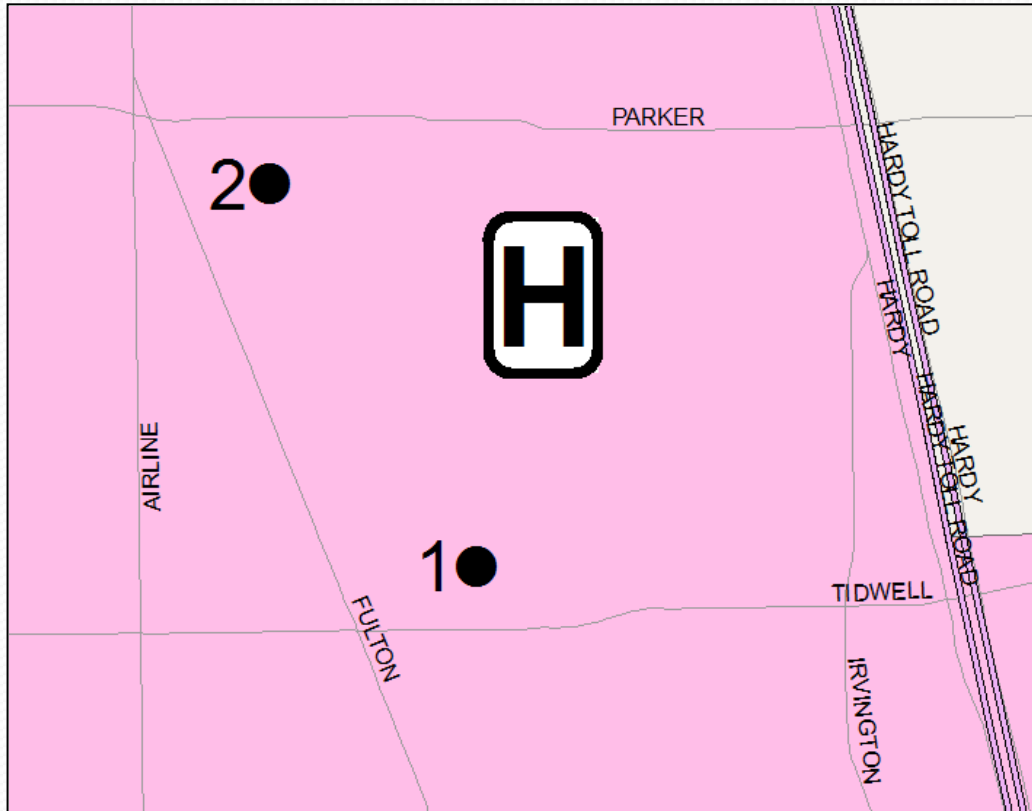
District G – Project 2

1209 S Dairy Ashford Rd.

Drainage Issues: 36-inch outfall has collapsed at Terry Hershey Park and caused a cave-in



District H



1. Northside/ Northline Area Roadside Ditch Project 1

Drainage Issues:

Culverts undersized, collapsed or not set to proper flow line
Silted ditch flow lines and culverts

2. Northside/ Northline Area Roadside Ditch Project 2

Drainage Issues:

Culverts undersized, collapsed or not set to proper flow line
Silted ditch flow lines and culverts

District H - Project 1



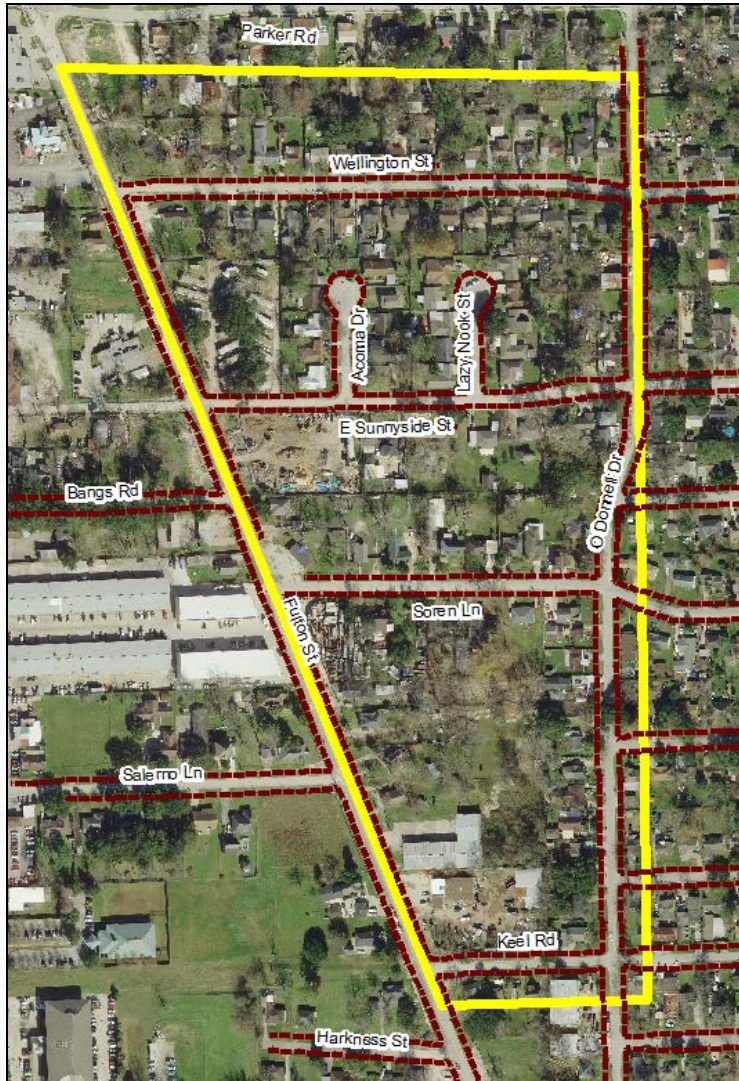
**Northside/ Northline Area
Roadside Ditch Project 1**
(N - Turner Dr.; S - Luther St.;
E - Clark Rd.; W - Fulton St.)

Drainage Issues:

Culverts undersized, collapsed or
not set to proper flow line
Silted ditch flow lines and culverts



District H – Project 2



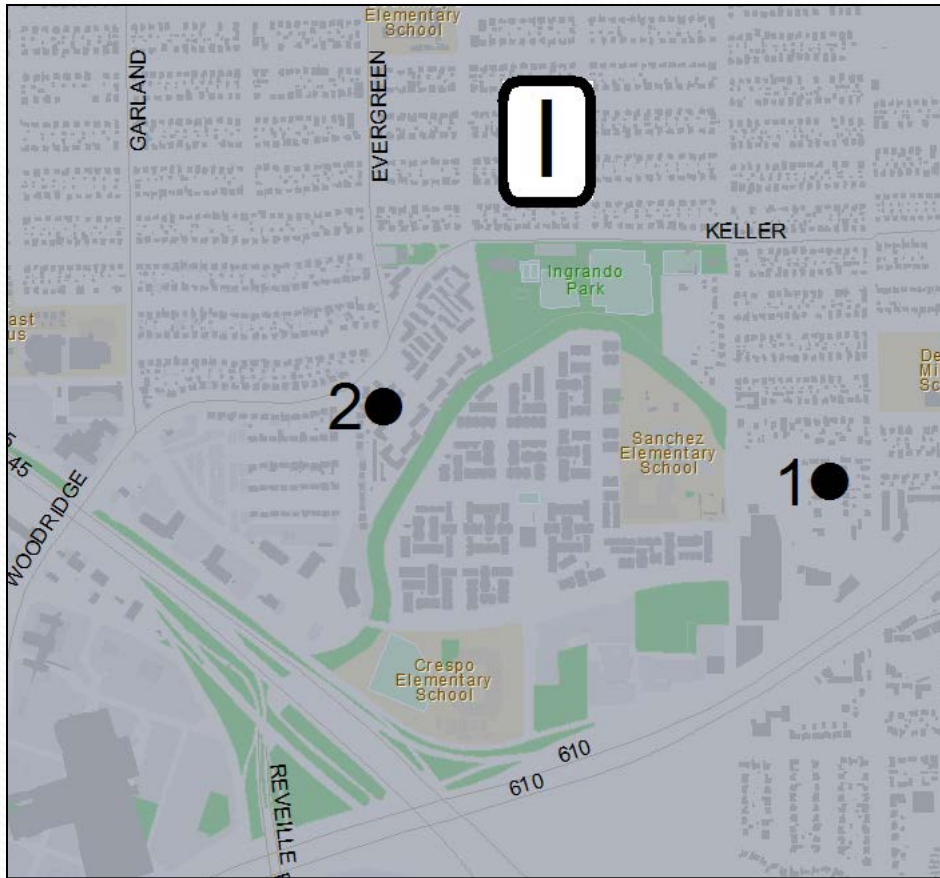
Northside/ Northline Area Roadside Ditch Project 2
(N - Wellington St.; S - Keel Rd.; E - O'Donnell Dr.;
W - Fulton St.)

Drainage Issues:

Culverts undersized, collapsed or not set to proper flow line
Silted ditch flow lines and culverts



District I



1. Plum Creek Clean Up (Part A)

Drainage Issues:

Needs Clear and Grubbing/
Re-establishment

Ditch ID: C102-00-00-M

2. Plum Creek Clean Up (Part B)

Drainage Issues:

Needs Clear and Grubbing/
Re-establishment

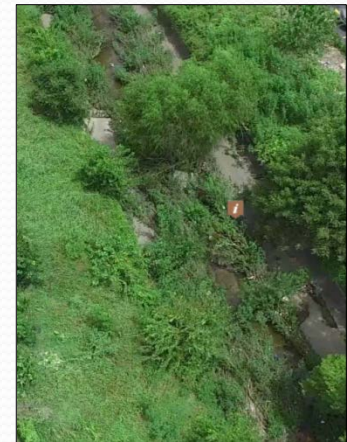
Ditch ID: C102-00-00-L

District I – Project 1

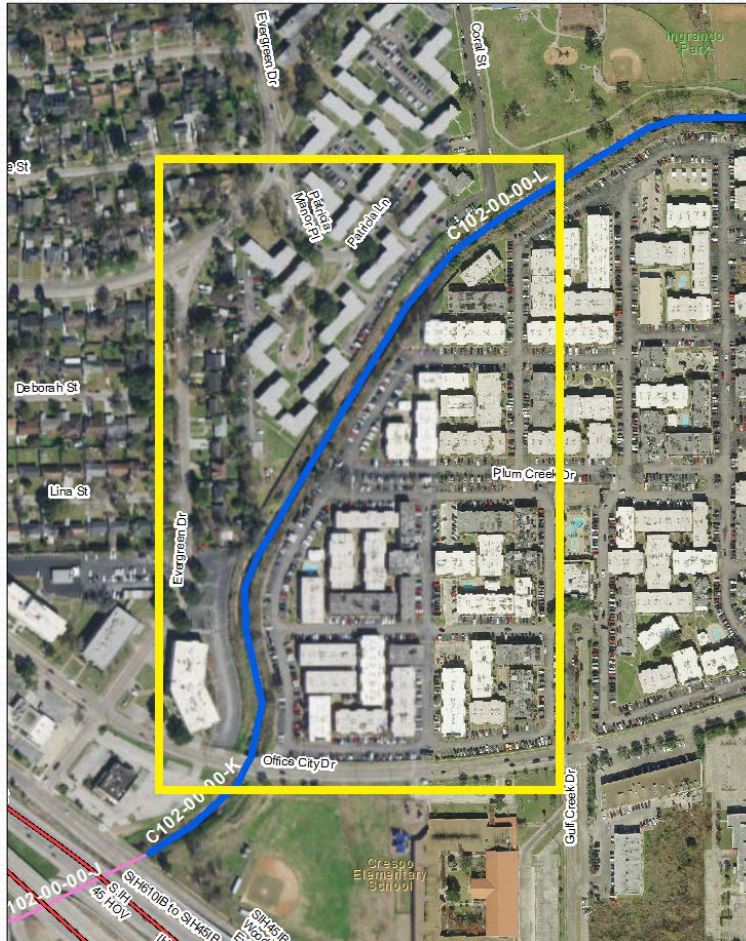
Plum Creek Clean Up (Part A) (from I-610 E. to Coral St.)

Drainage Issues: Needs Clear and Grubbing/ Re-establishment

Ditch ID: C102-00-00-M



District I – Project 2

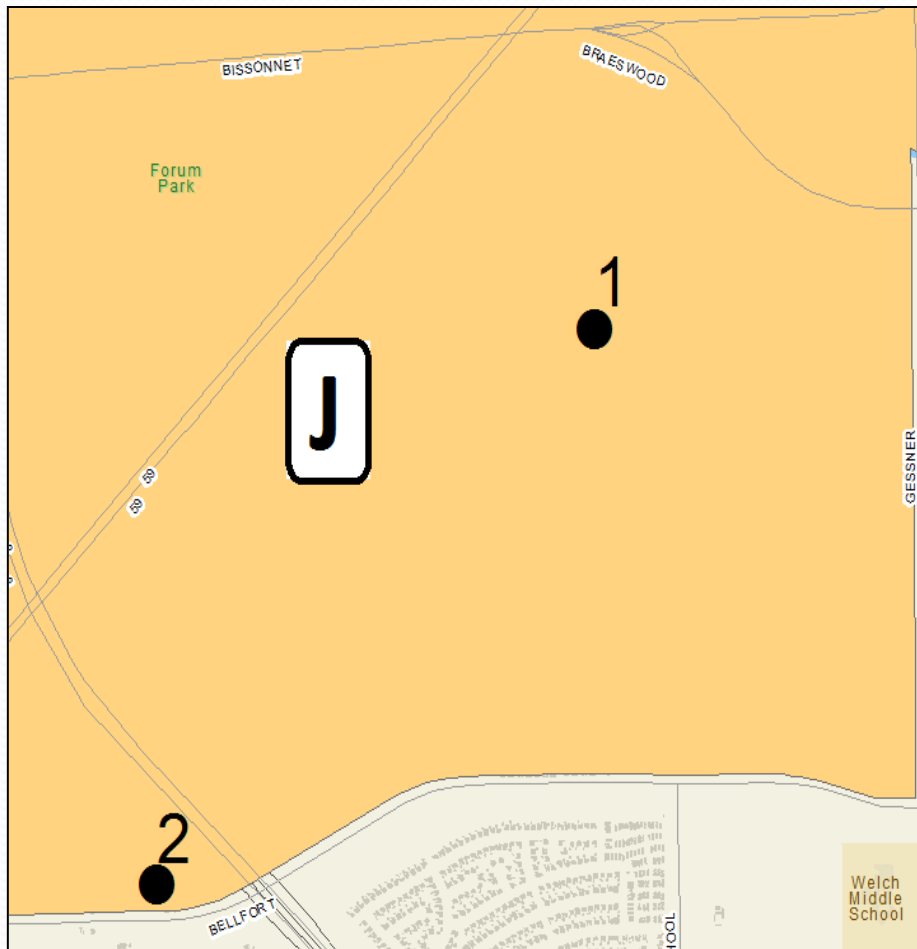


Plum Creek Clean Up (Part B) (Coral St. to Office City Dr.)

Drainage Issues:

Needs Clear and Grubbing/ Re-establishment
Ditch ID: C102-00-00-L

District J



1. 9238 Tooley Dr.

Drainage Issues:

60-inch outfall has collapsed and caused a cave-in

2. Bedford Project

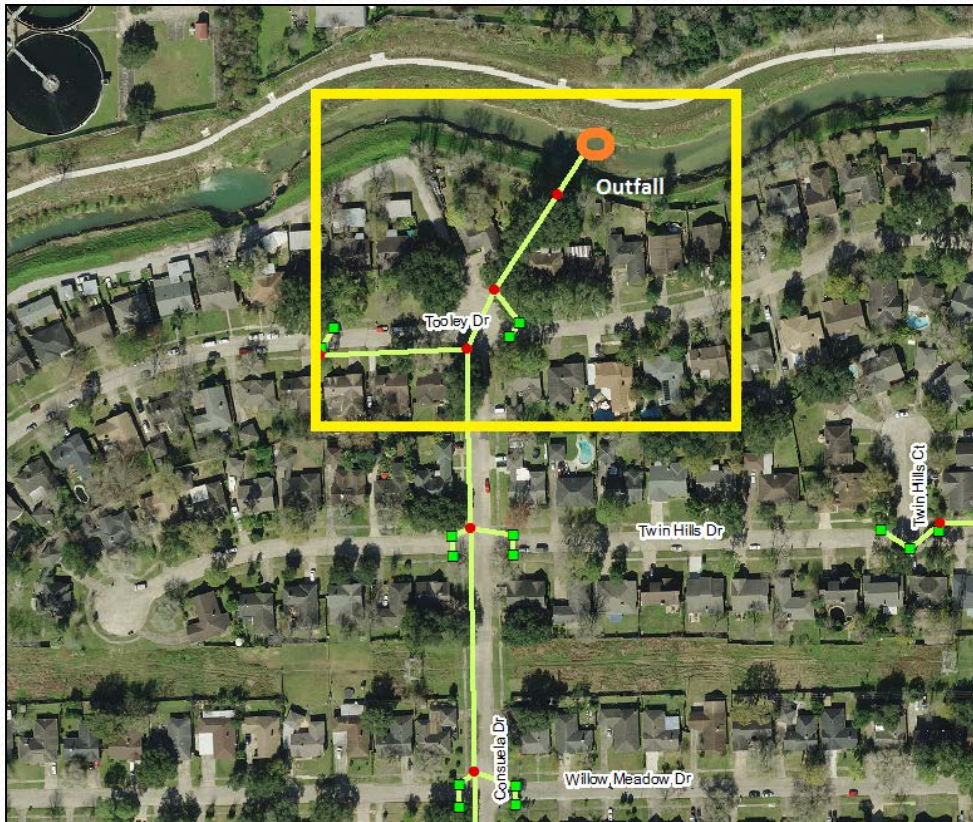
Drainage Issues:

Culverts undersized, collapsed or not set to proper flow line
Silted ditch flow lines and culverts

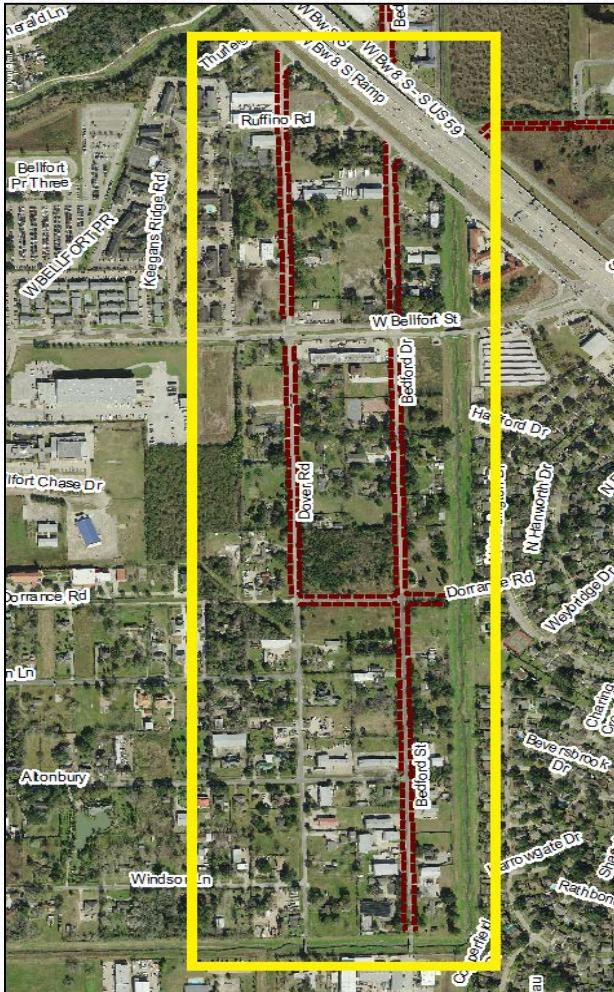
District J – Project 1

9238 Tooley Dr.

Drainage Issues: 60-inch outfall has collapsed and caused a cave-in



District J - Project 2

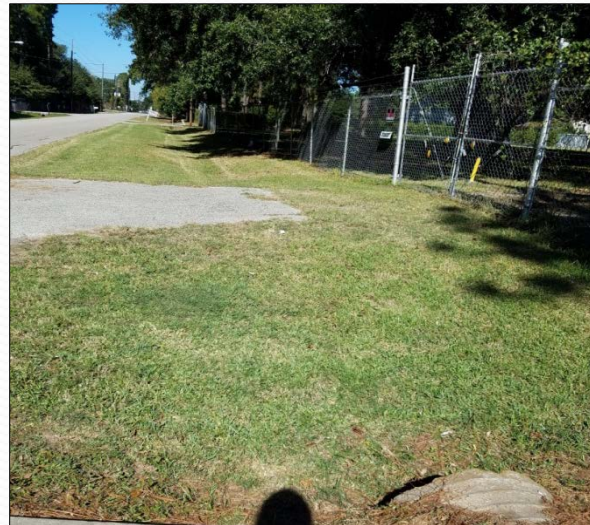


Bedford Project

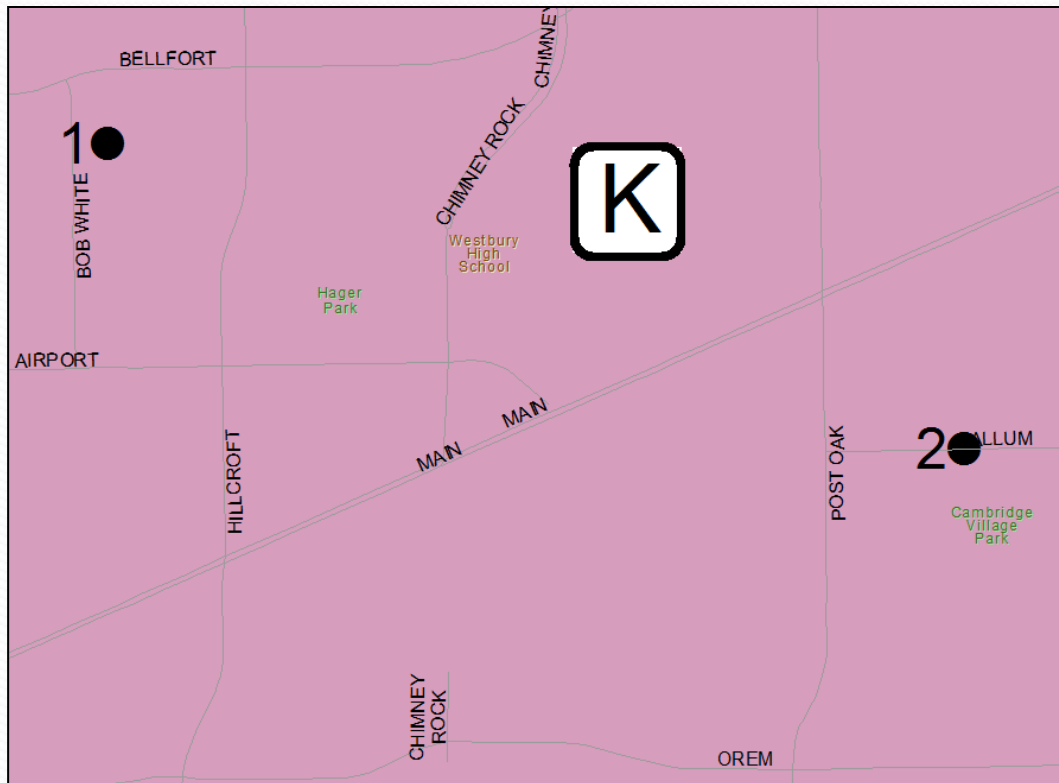
(N - Beltway 8; S - Dorrance Rd.;
E - Bedford Dr.; W - Dover St.)

Drainage Issues:

Culverts undersized, collapsed or
not set to proper flow line
Silted ditch flow lines and culverts



District K



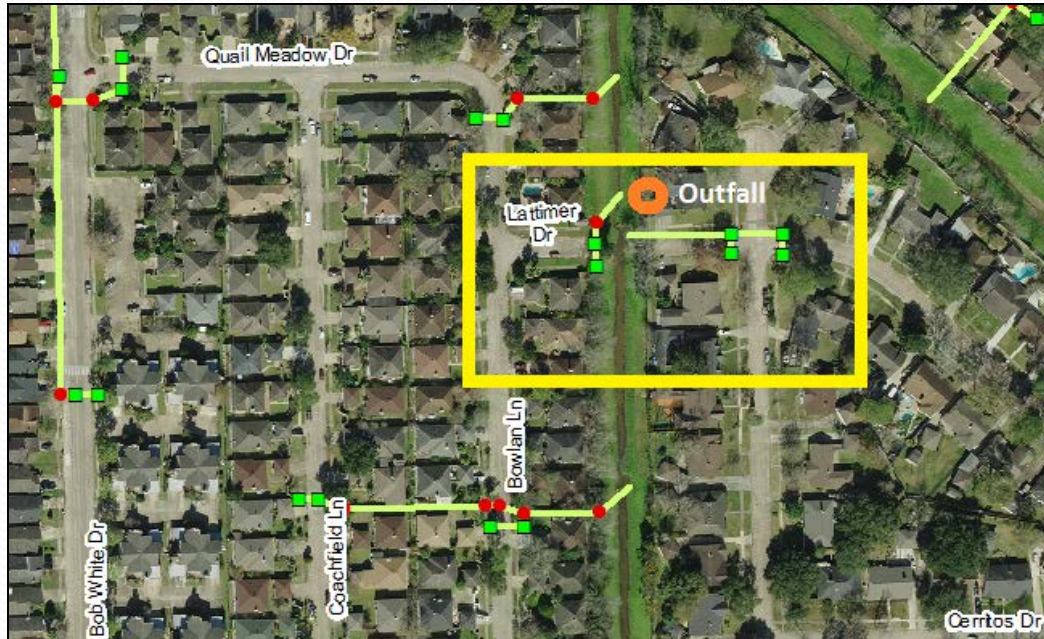
1. 11507 Bowlan Ln.

Drainage Issues:
24-inch outfall collapse

2. Cambridge Village Park

Drainage Issues:
Culverts undersized, collapsed or
not set to proper flow line
Silted ditch flow lines and culverts

District K – Project 1



11507 Bowlan Ln.
(Westbury Pkg. 2)

Drainage Issues:
24-inch outfall collapse



District K - Project 2

Cambridge Village Park (N - Allum St.; S - Lotus St.; E - Nitida St.; W - S. Post Oak Rd.)

Drainage Issues: Culverts undersized, collapsed or not set to proper flow line
Silted ditch flow lines and culverts

