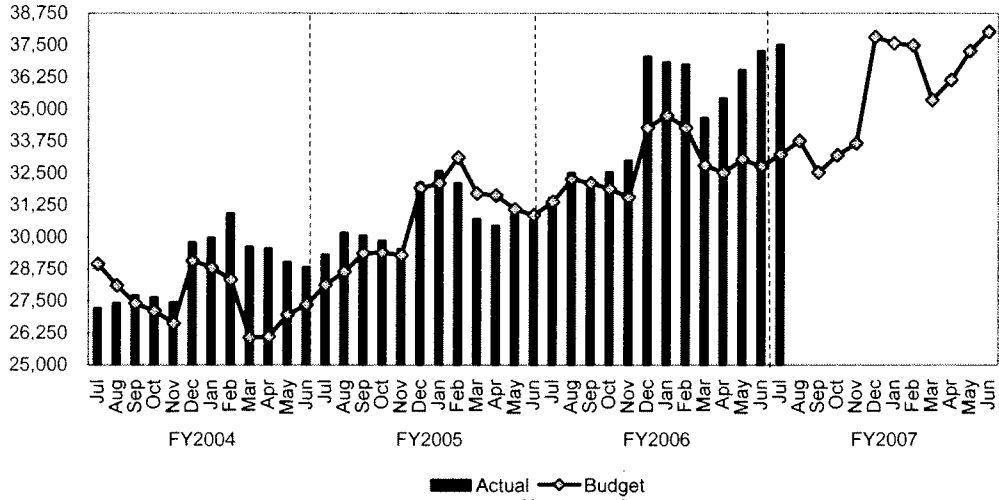


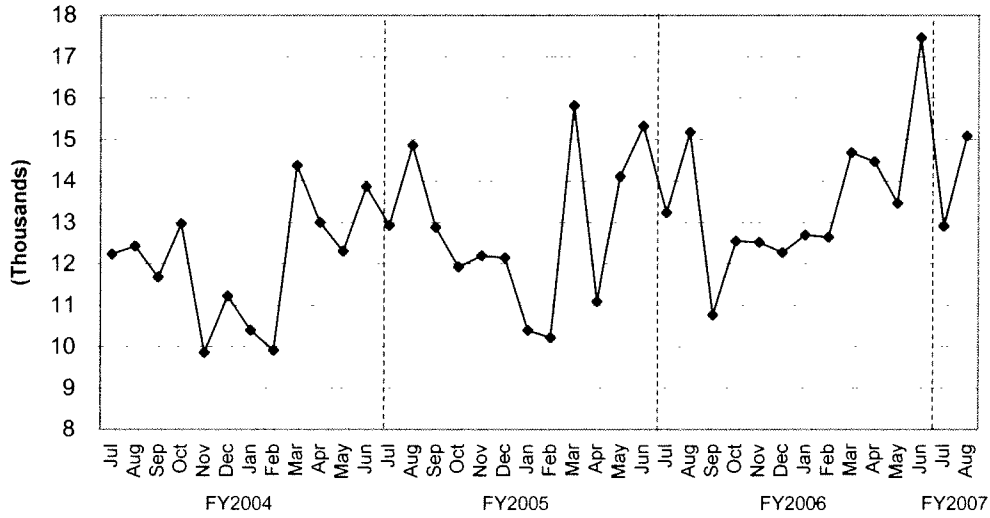
TREND INDICATORS - LOCAL ECONOMY

Sales Tax - Three-Month Rolling Average



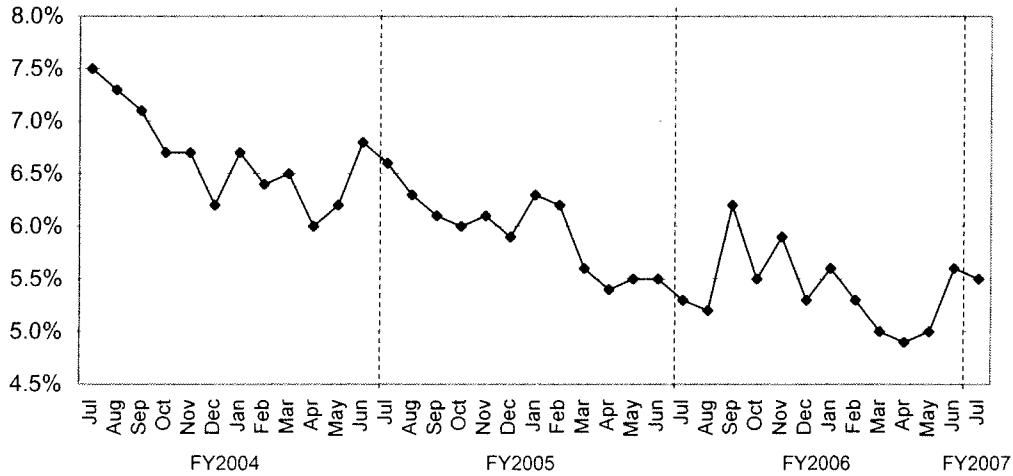
Source: Office of State Comptroller

Building Permits Issued



Source: City of Houston Planning and Development Department

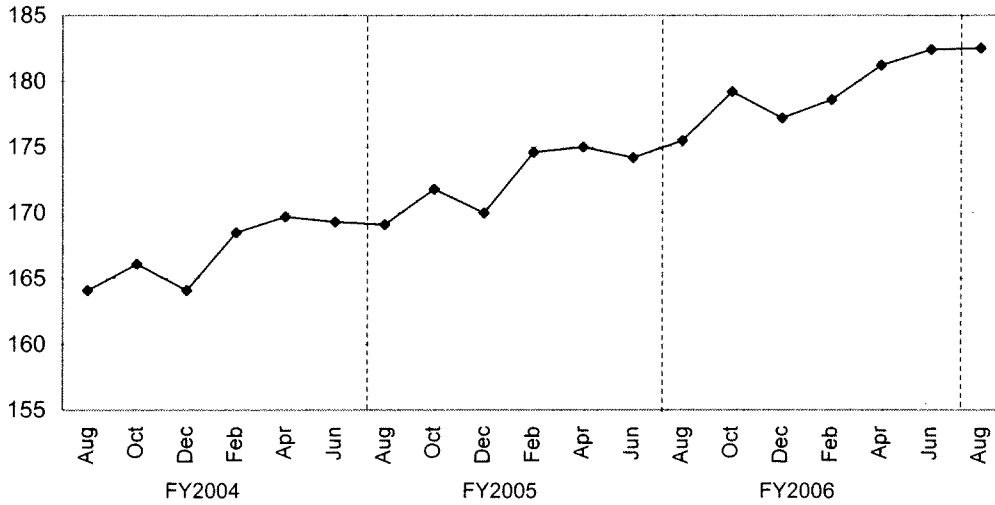
Unemployment Rate



Source: Databook Houston; University of Houston Center for Public Policy; not seasonally adjusted

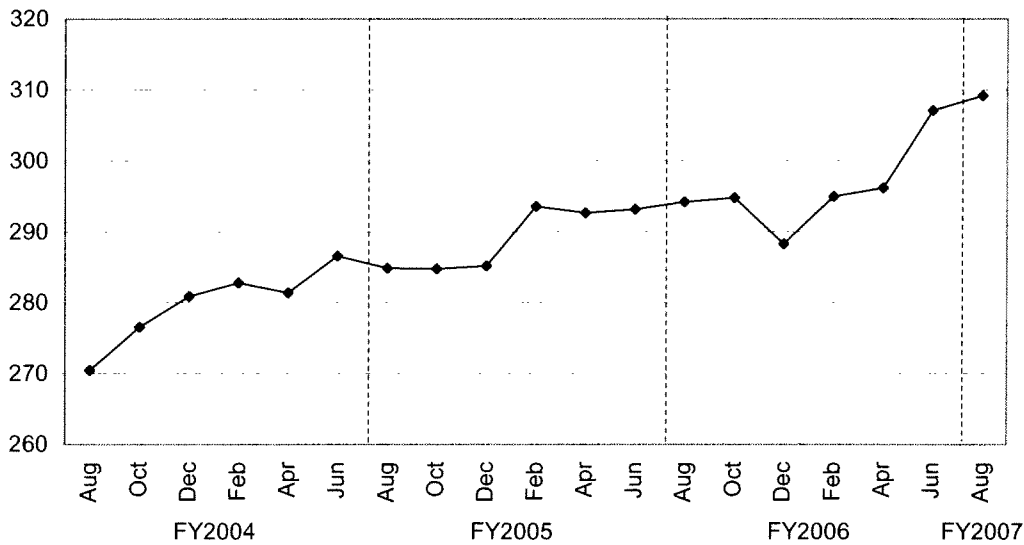
TREND INDICATORS - LOCAL ECONOMY

Consumer Price Index - All Items



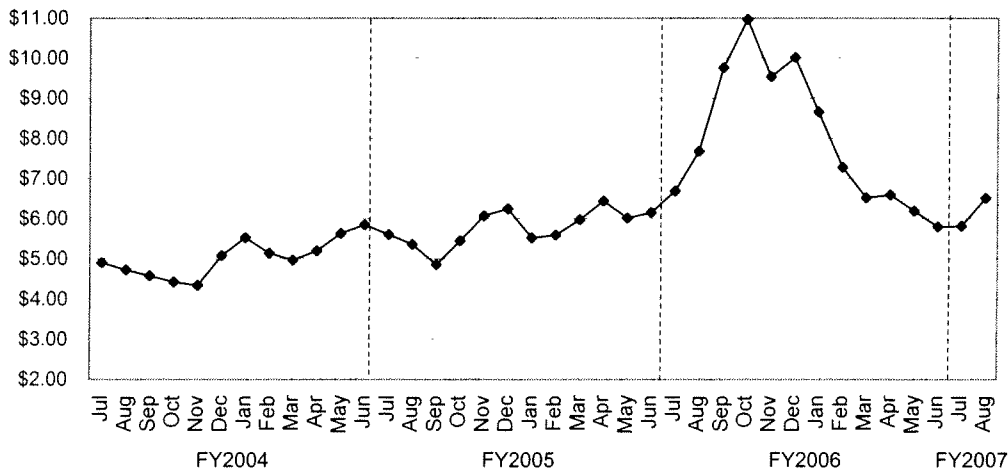
Source: Bureau of Labor Statistics - Houston, Galveston, Brazoria TX

Consumer Price Index - Medical Care



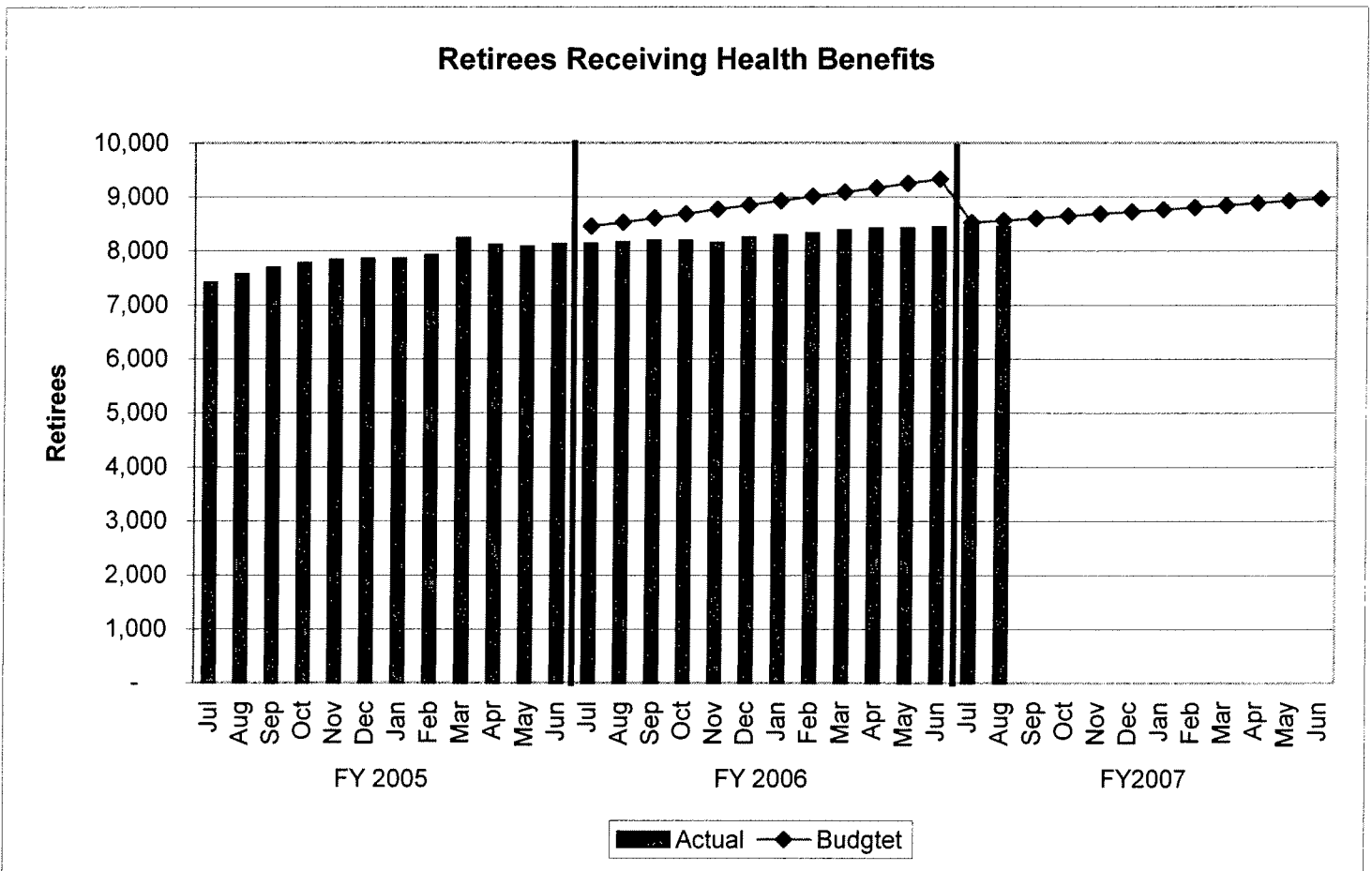
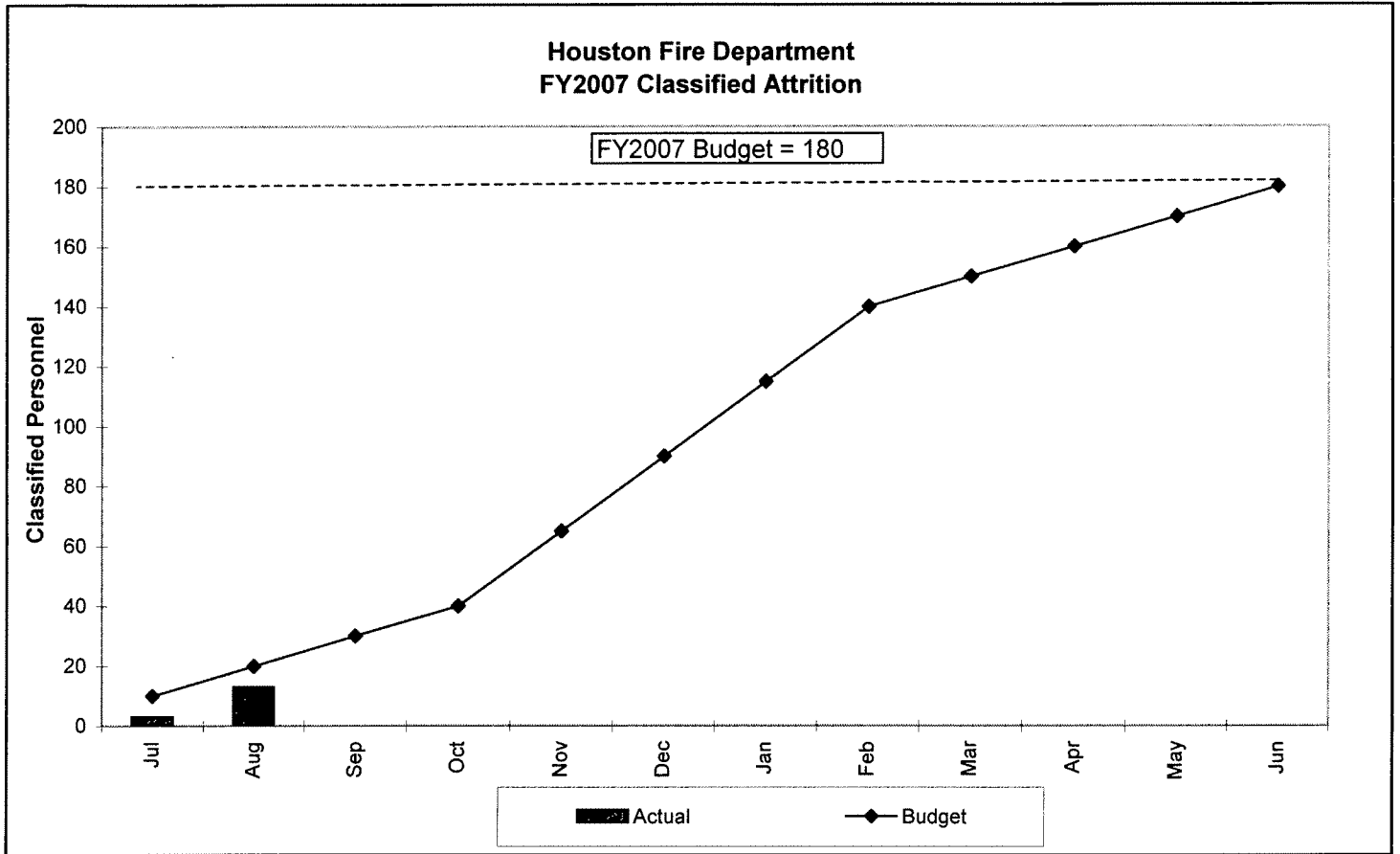
Source: Bureau of Labor Statistics - Houston, Galveston, Brazoria TX

Average National Natural Gas - Wellhead Price

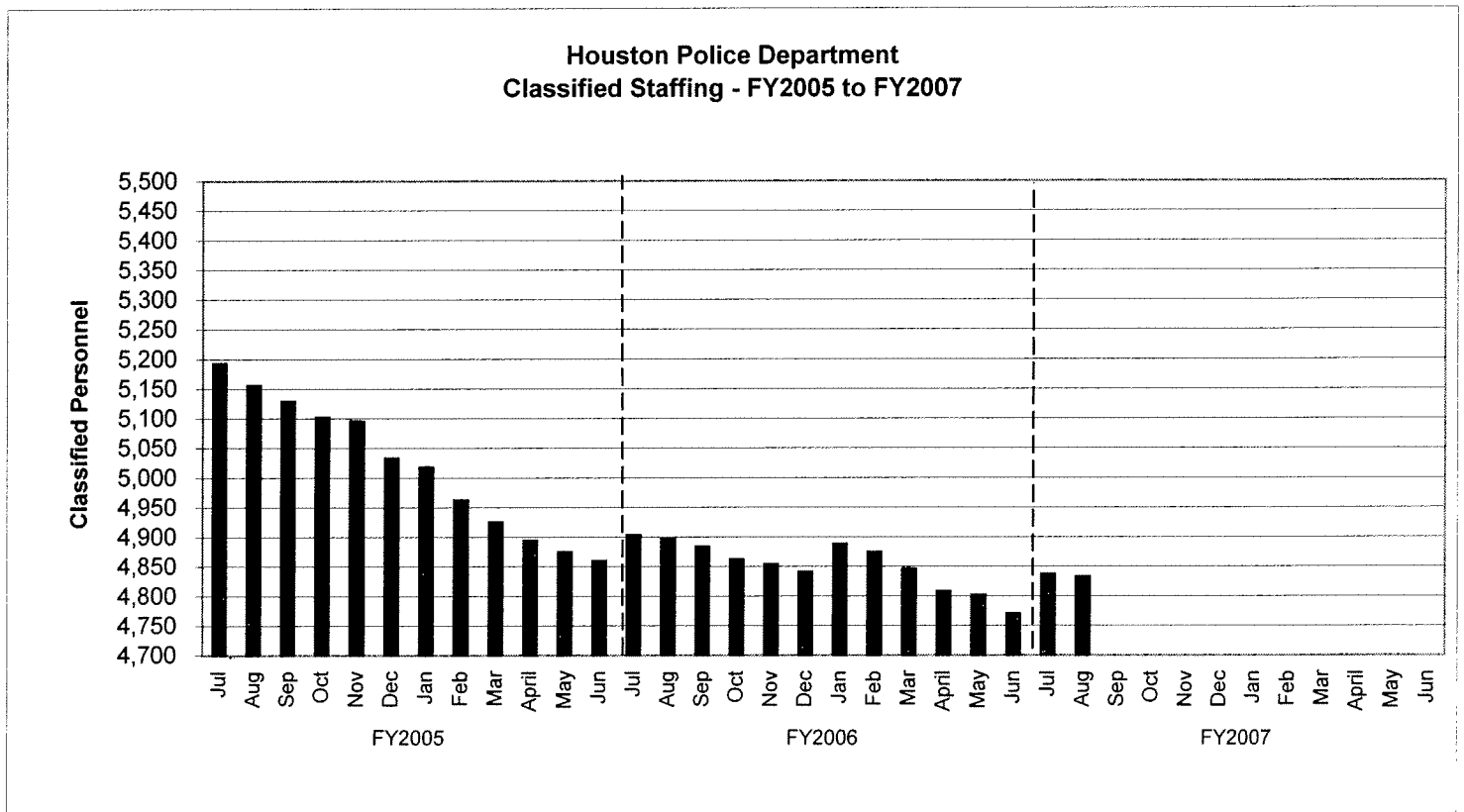
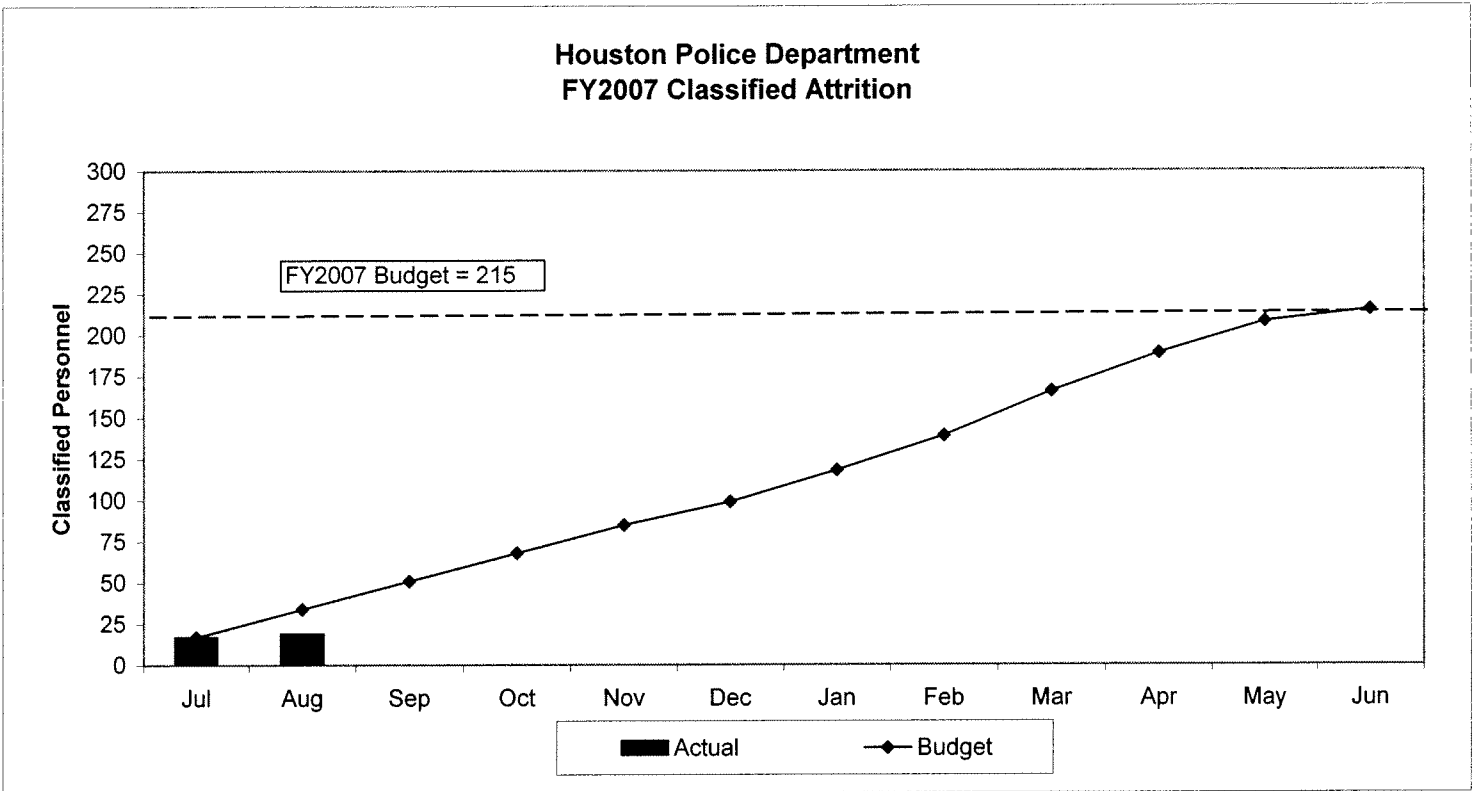


Source: Energy Information Administration/Natural Gas Monthly

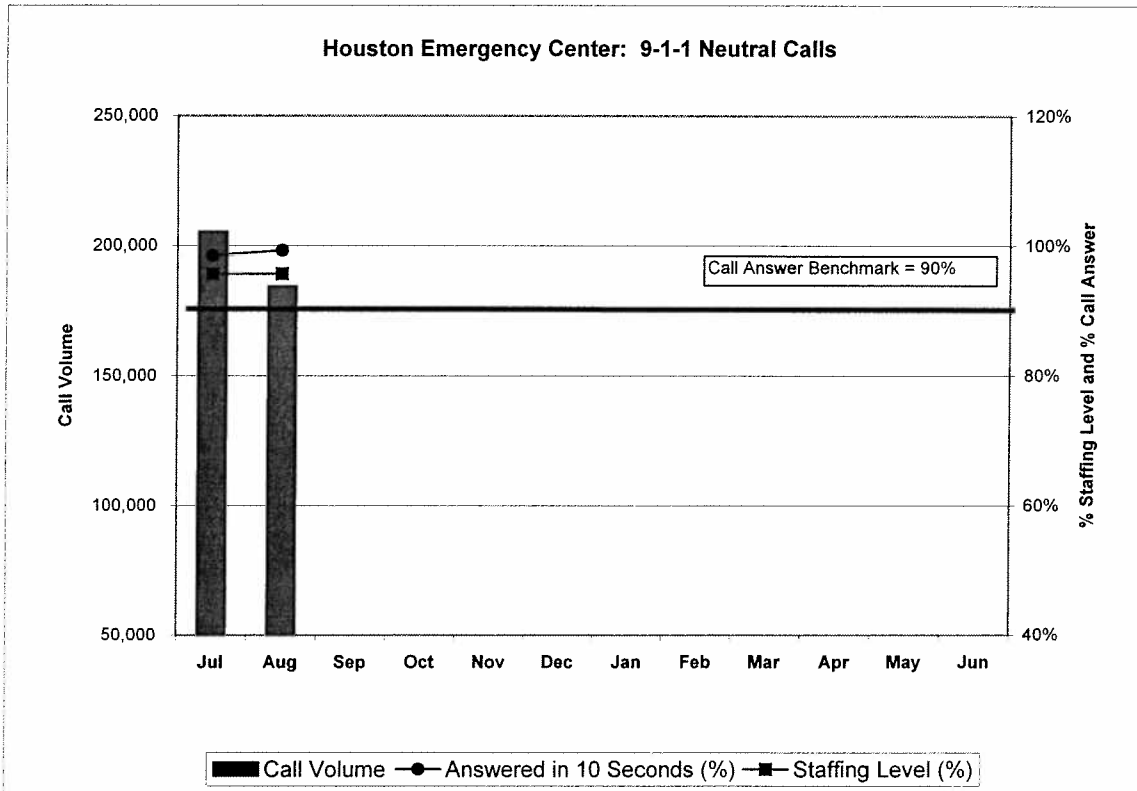
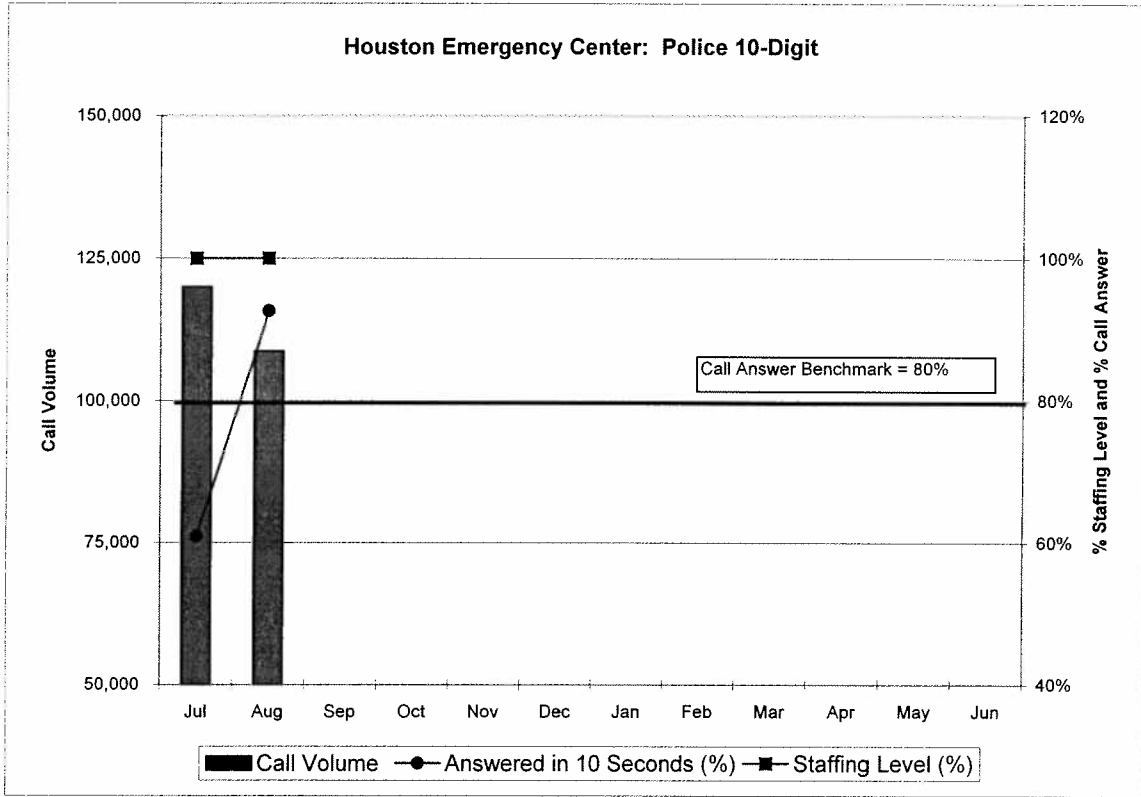
TREND INDICATORS - RETIREMENTS



TREND INDICATORS - HIRING AND RETIREMENTS

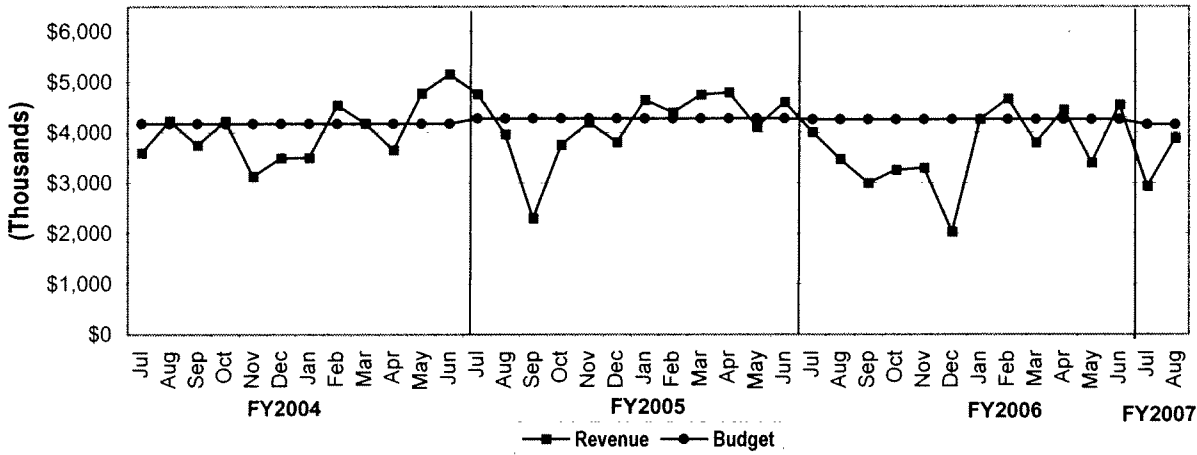


TREND INDICATORS - HOUSTON EMERGENCY CENTER

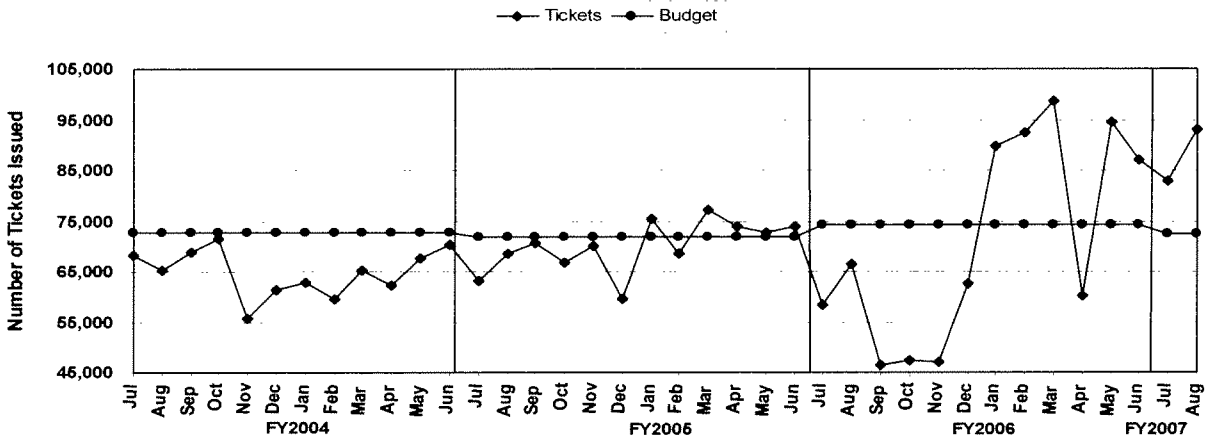


TREND INDICATORS - MUNICIPAL COURTS

Total Municipal Courts Revenue

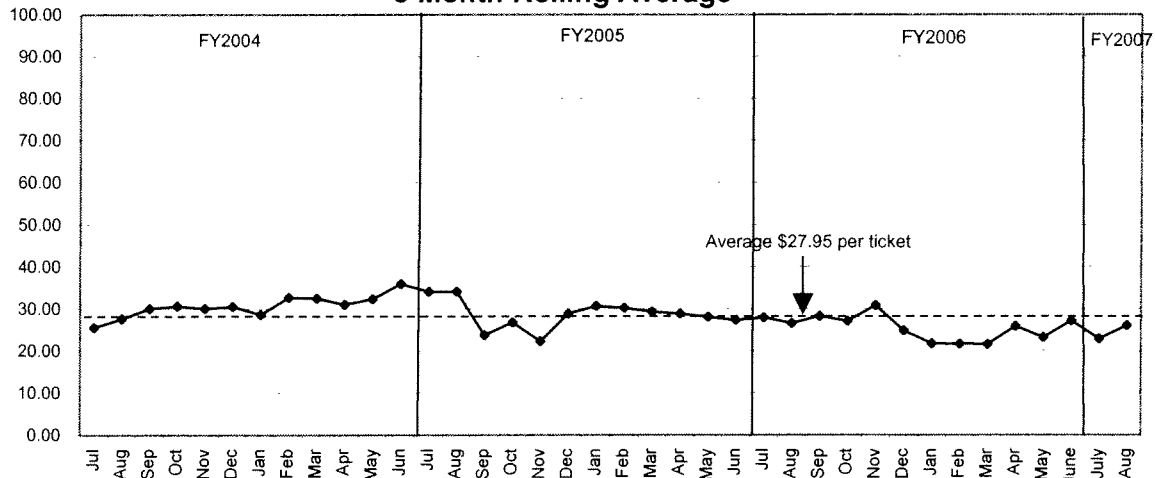


Number of Traffic Citations Issued

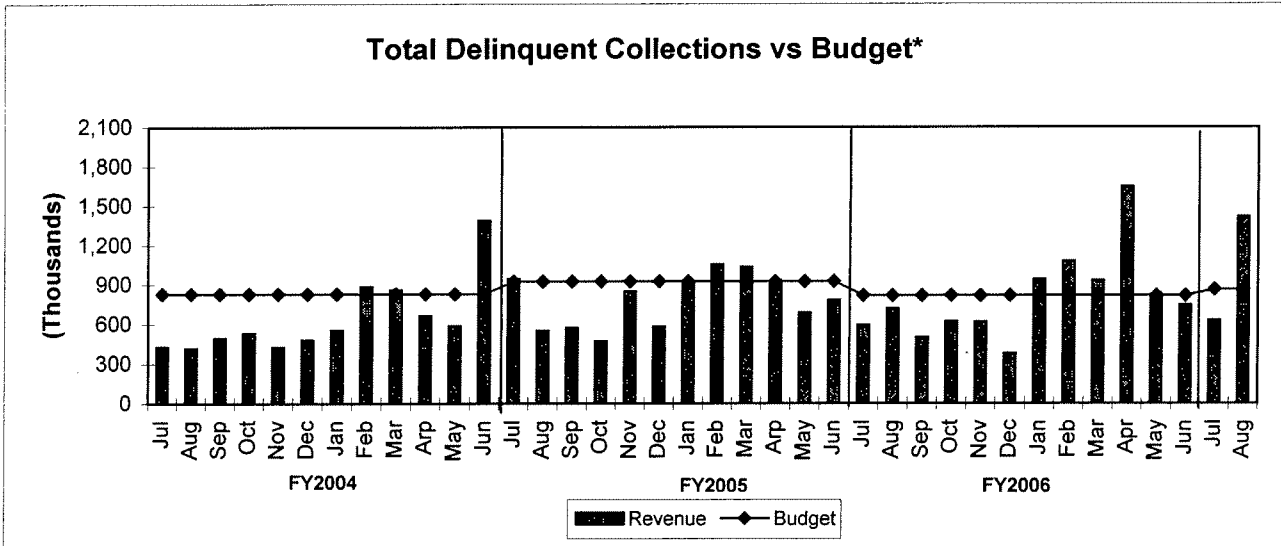
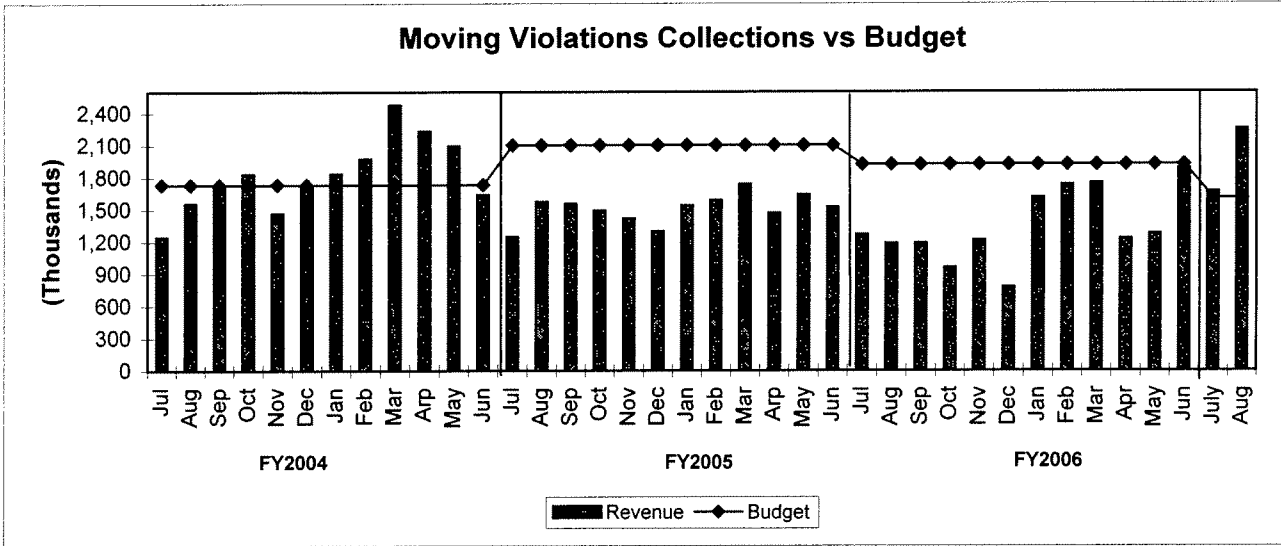


Note: Tickets issued primarily by the Houston Police Department.

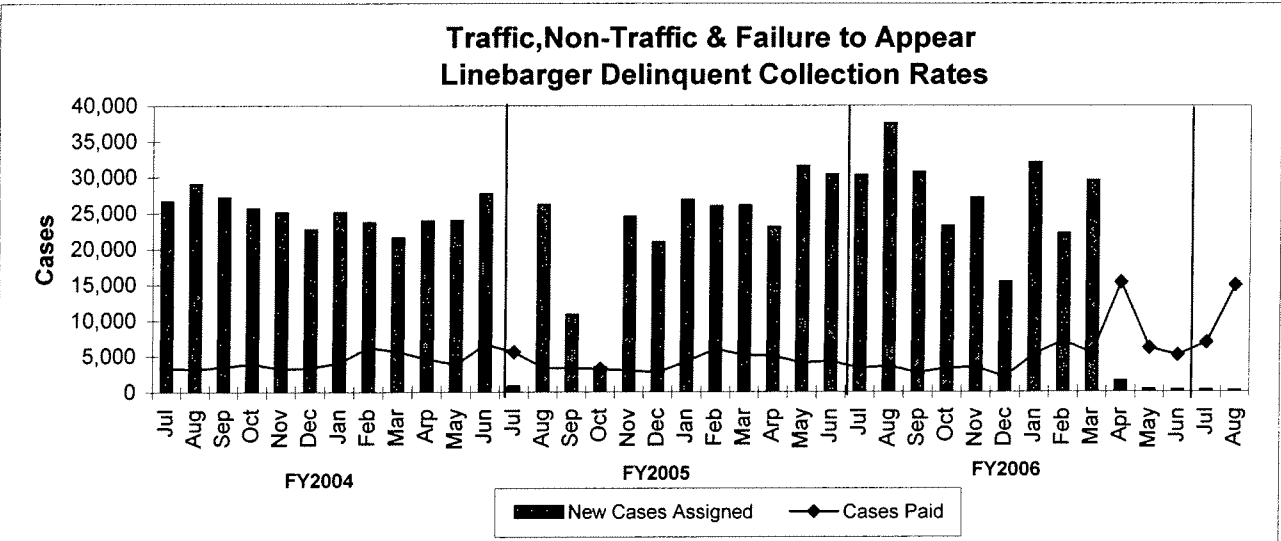
Moving Violations Revenue Per Ticket Issued (427010) 3 Month Rolling Average



TREND INDICATORS - MUNICIPAL COURTS



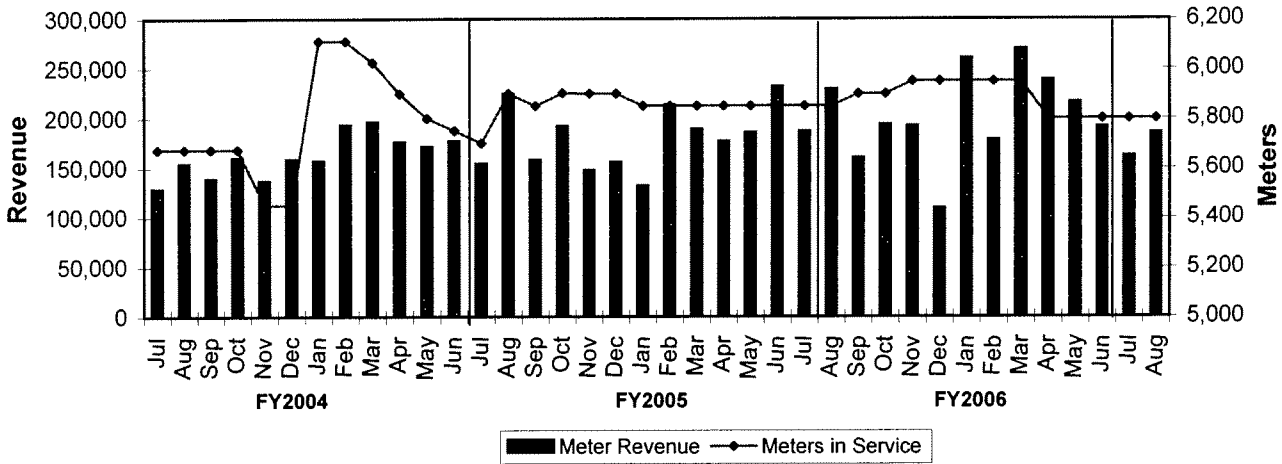
*Net of fees and expenses paid to Linebarger



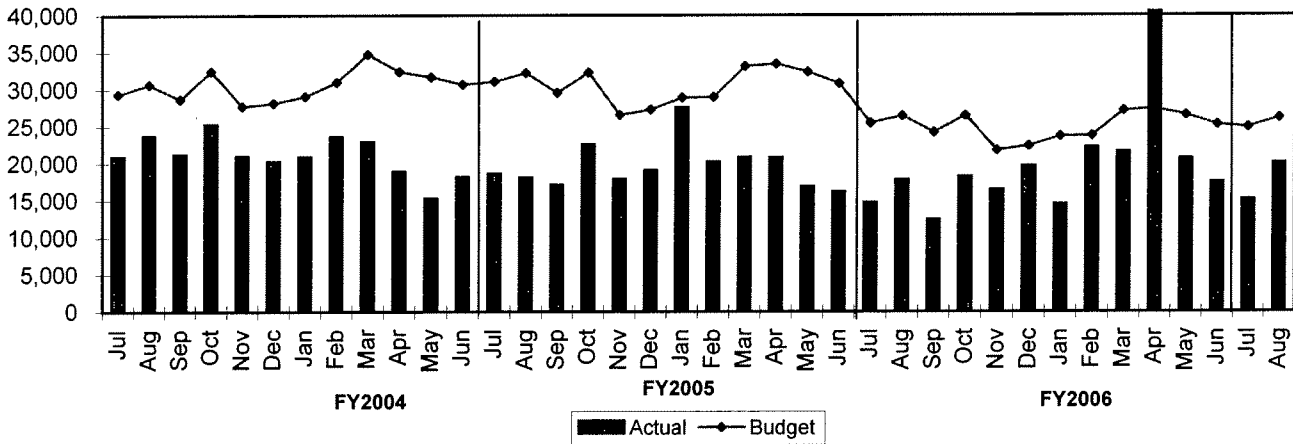
*Excludes Delinquent Parking Collections

TREND INDICATORS - MUNICIPAL COURTS

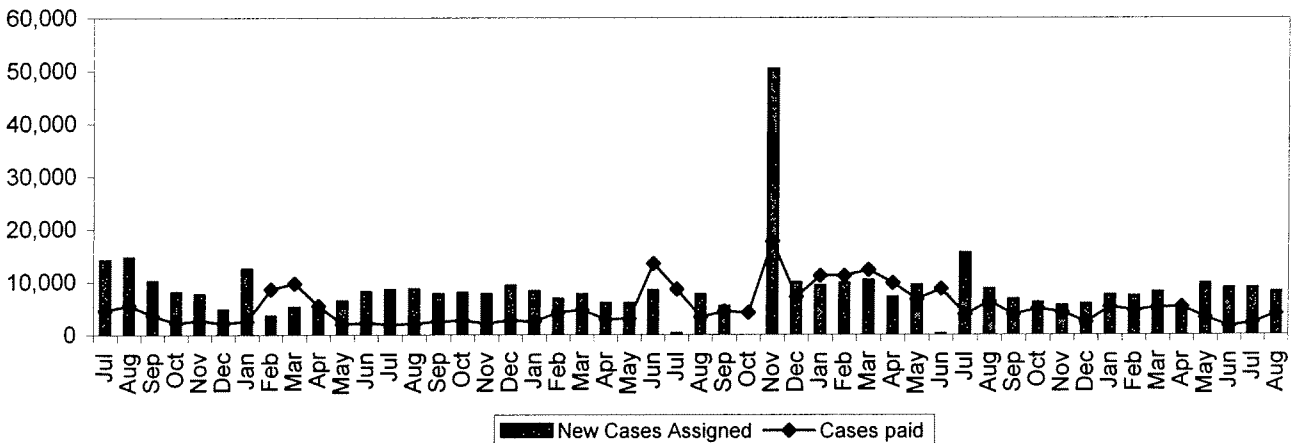
Meter Revenue vs # Meters in Service



Parking Violations vs Budget

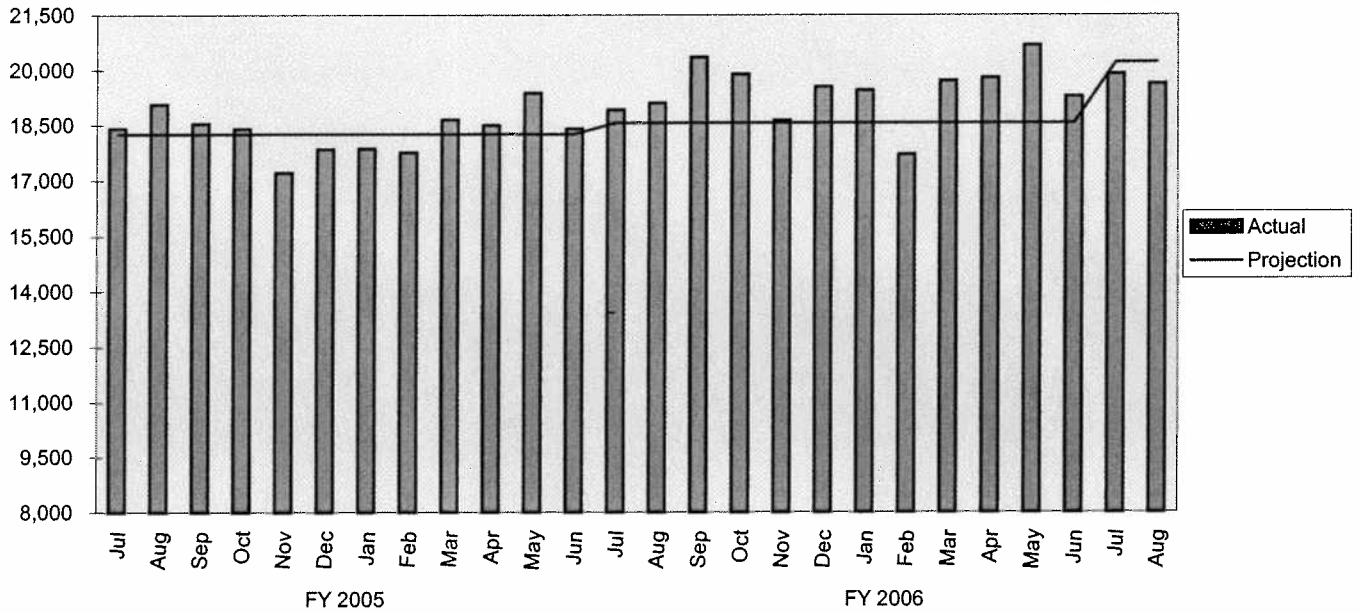


Parking Meter Violations Linearger Delinquent Collections Rate

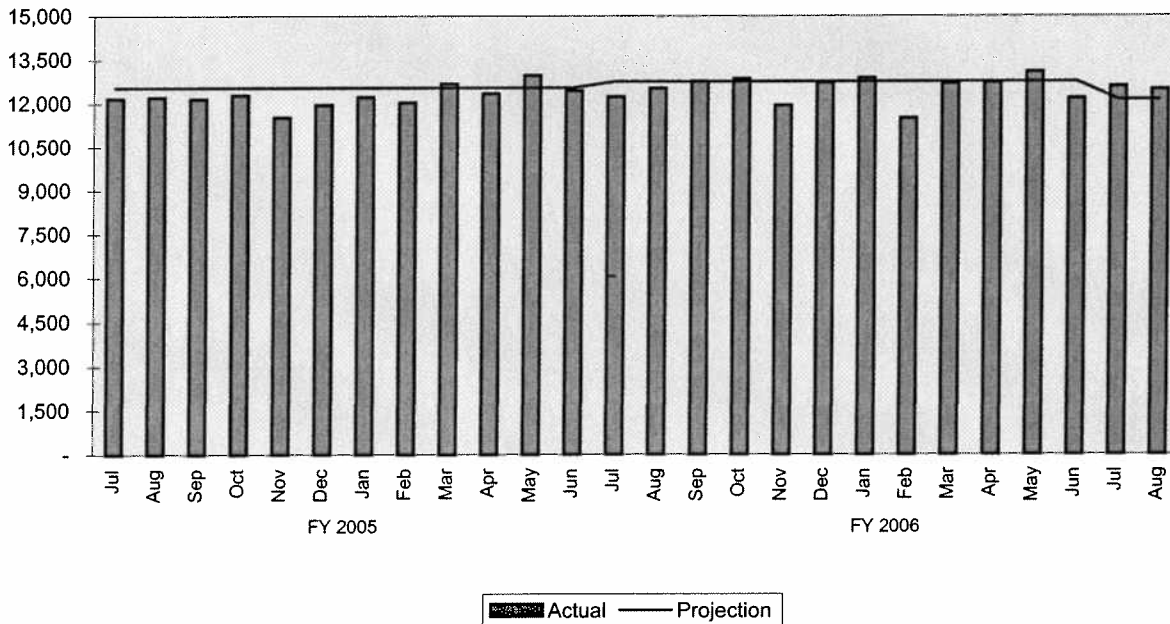


TREND INDICATORS - AMBULANCE SERVICES

EMS Incidents

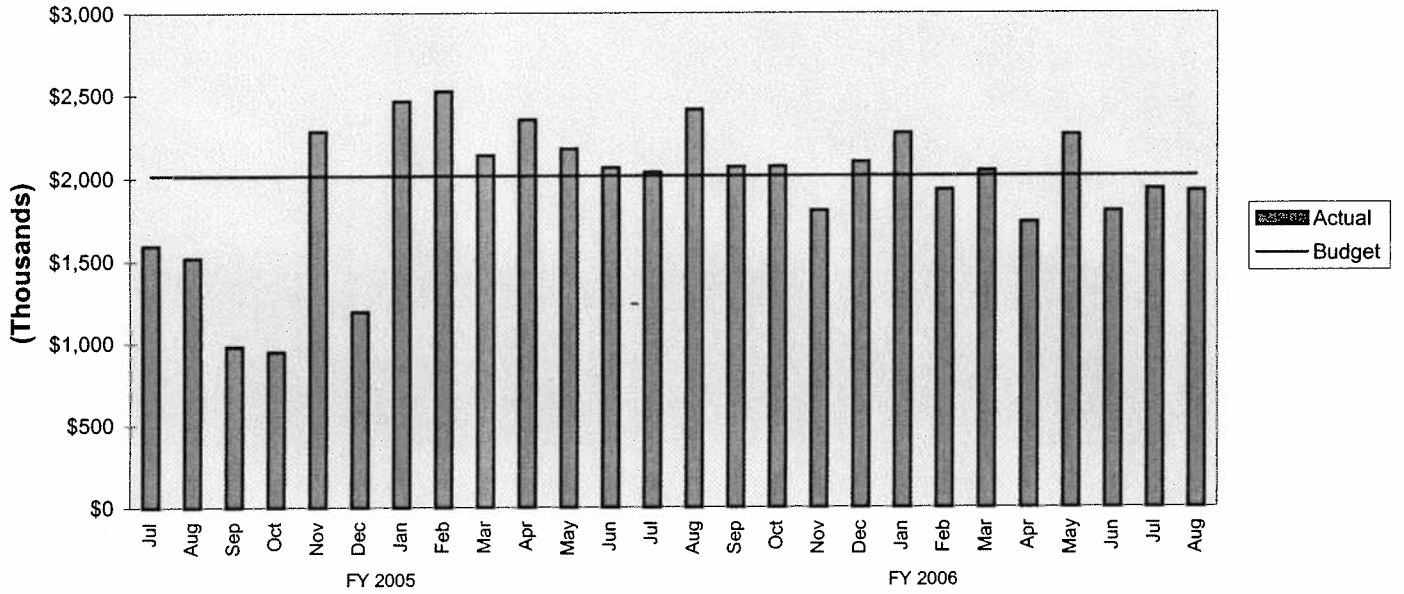


EMS Transports

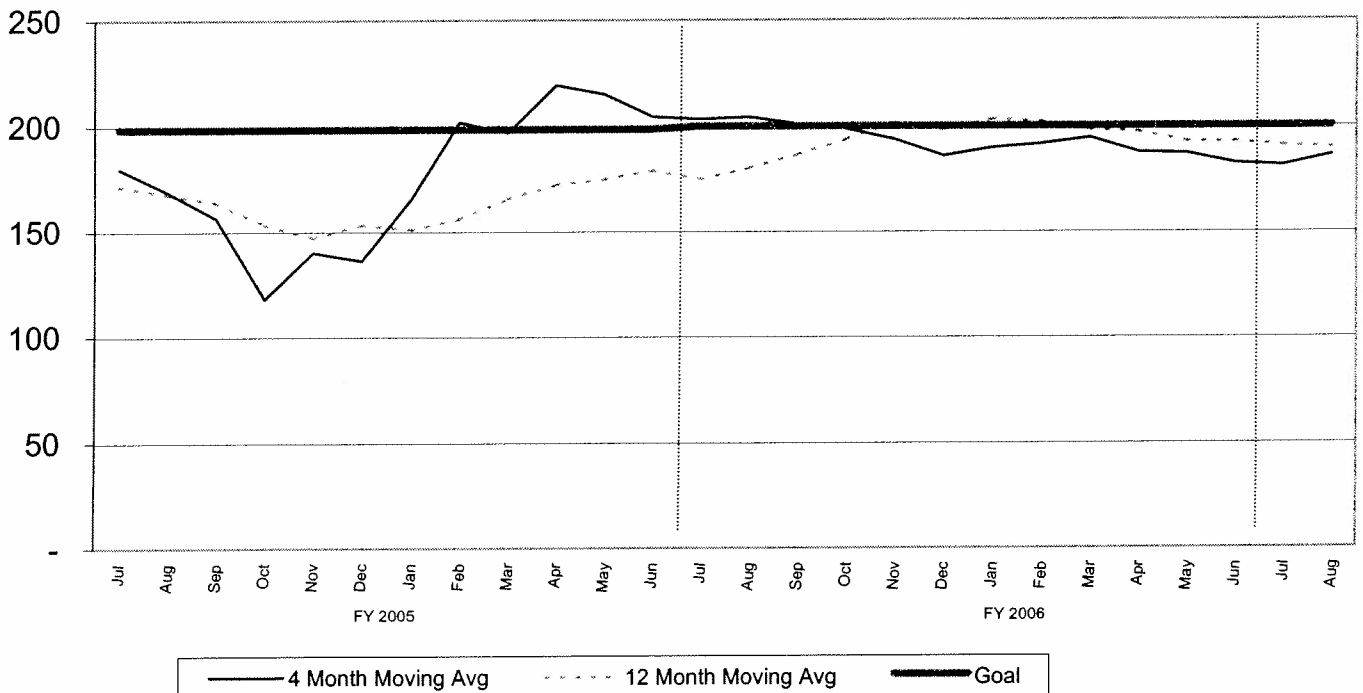


TREND INDICATORS - AMBULANCE SERVICES

EMS Revenue (Net Collections)

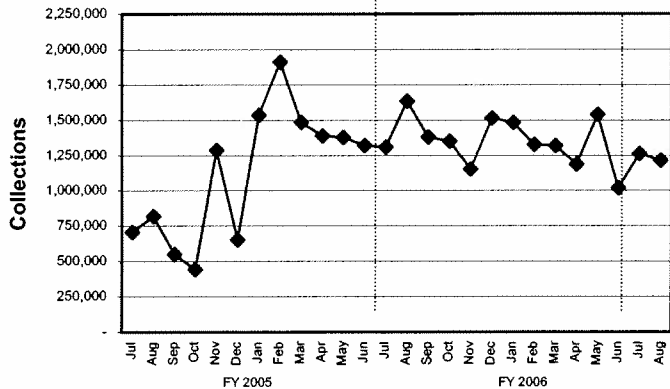


4 Month and 12 Month Moving Average EMS Revenue Per Transport

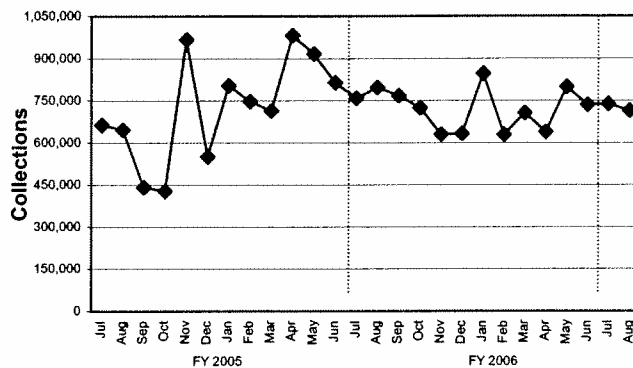


TREND INDICATORS - AMBULANCE SERVICES

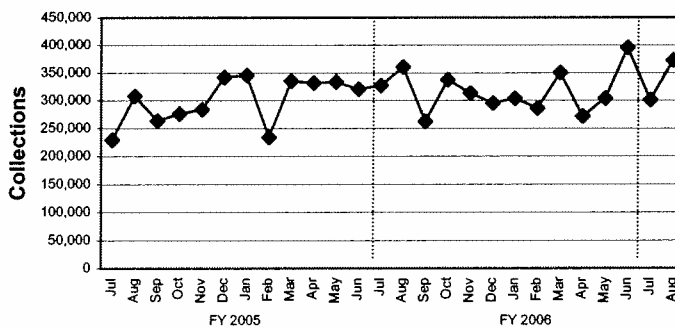
EMS - Gross Medicare/Caid Revenue



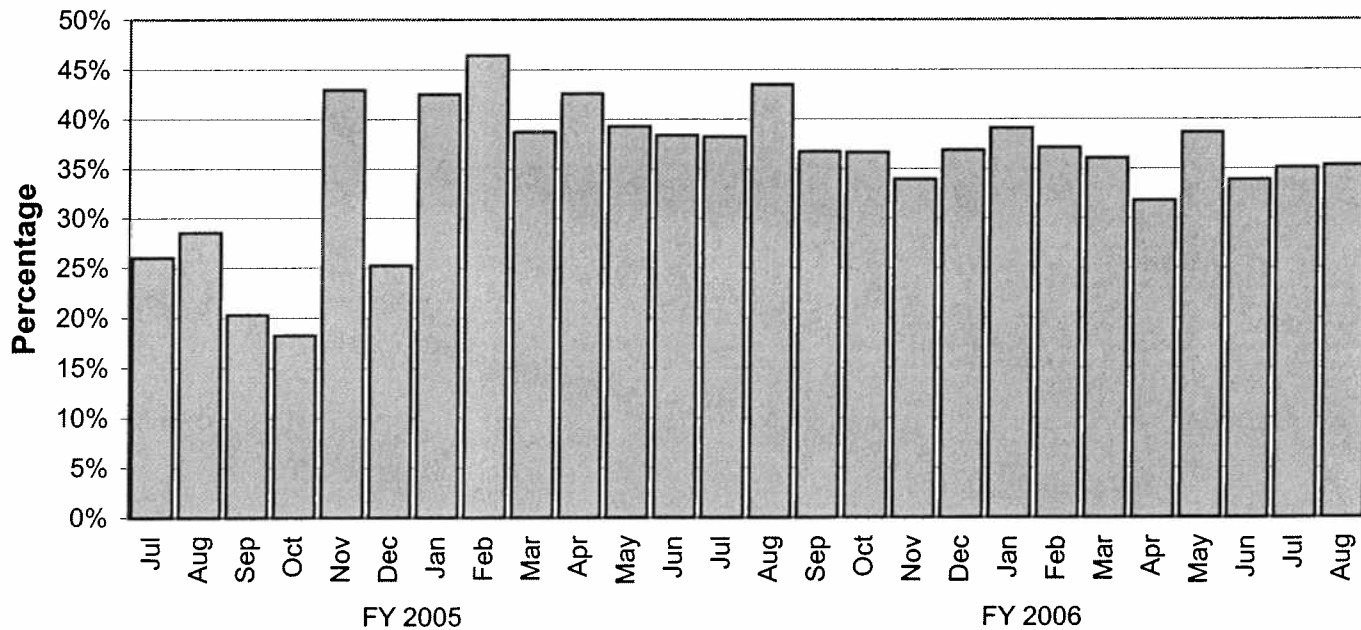
EMS - Gross Private Insurance Revenue



EMS - Gross Self-Pay Revenue

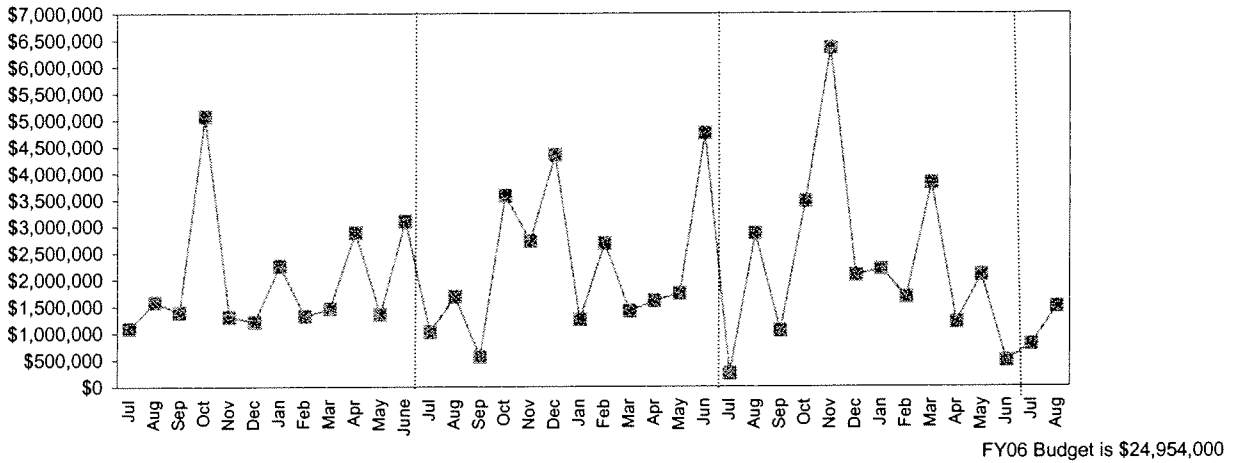


EMS - Gross Collection Percentage

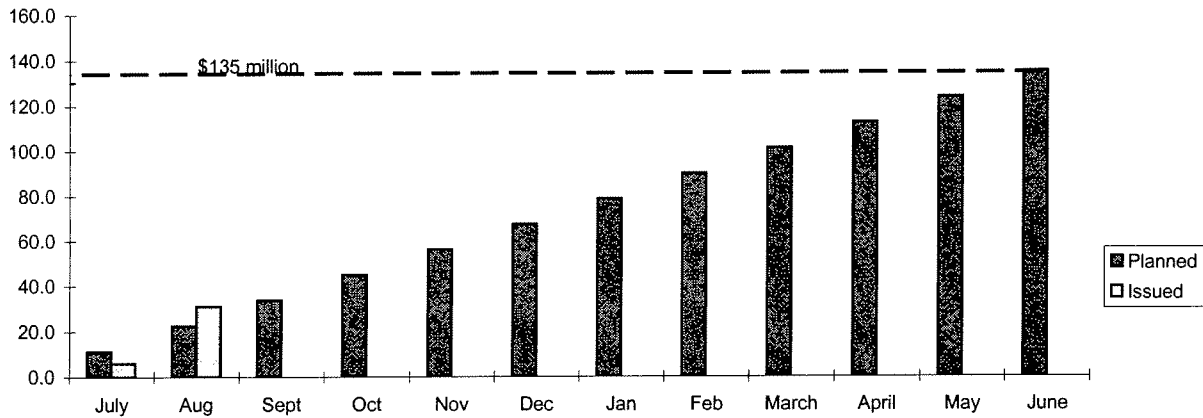


TREND INDICATORS - MISCELLANEOUS

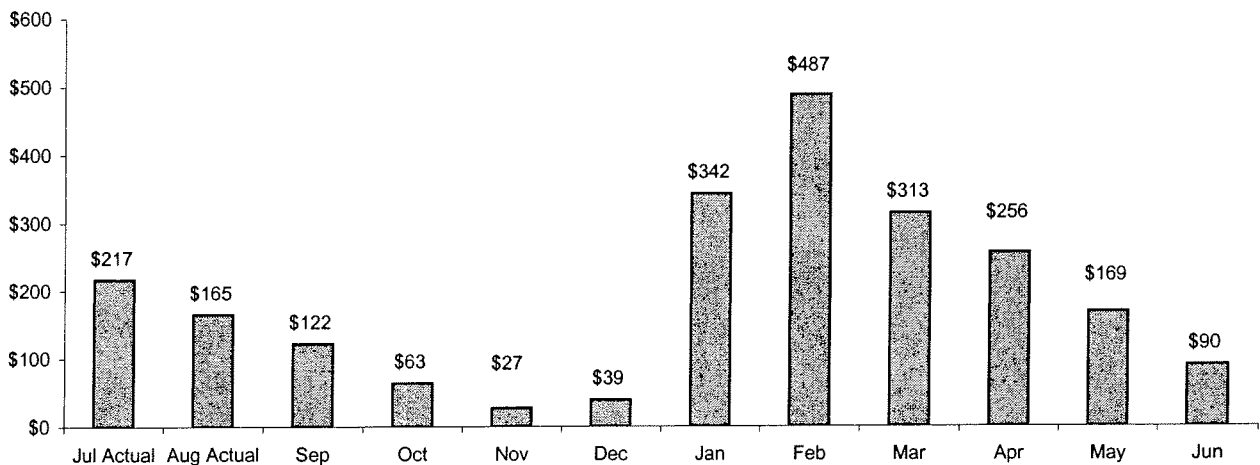
Delinquent Property Tax



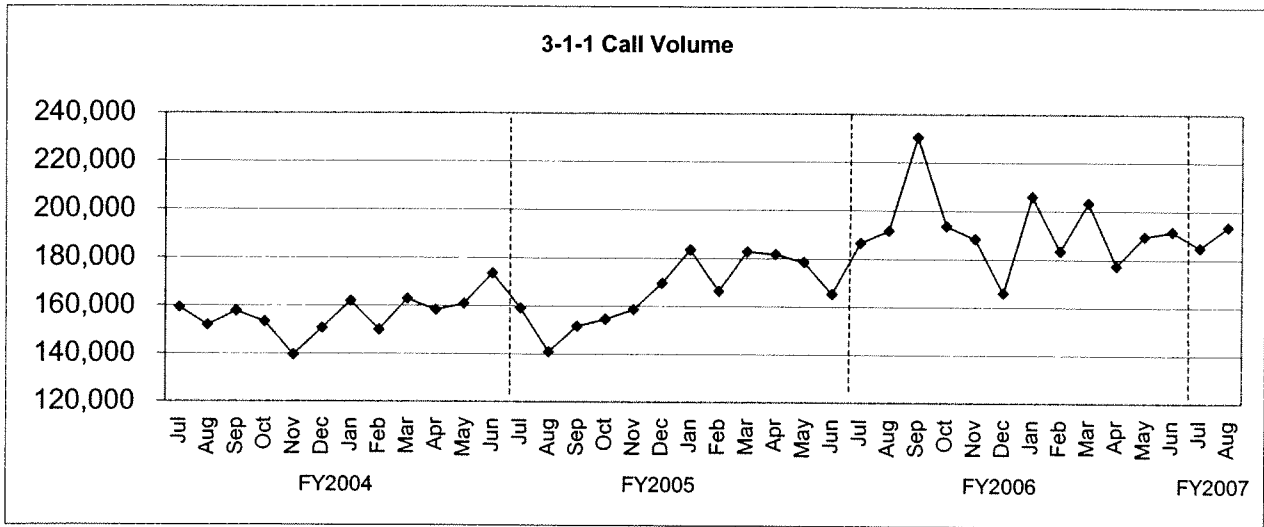
FY2007 Public Improvement Bonds Commercial Paper Planned vs Issued (\$Millions)



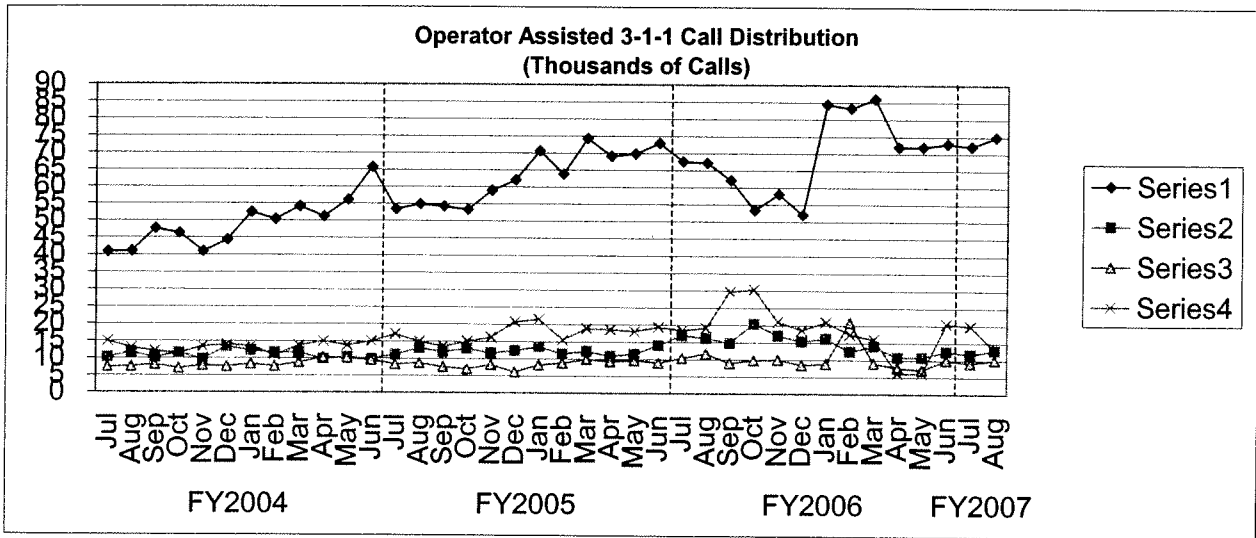
FY2007 Projected City of Houston General Fund Ending Cash Balances (In Millions \$)



TREND INDICATORS - MISCELLANEOUS



3-1-1 became fully operational in August 2001



4 largest users of operator assisted 3-1-1 calls.