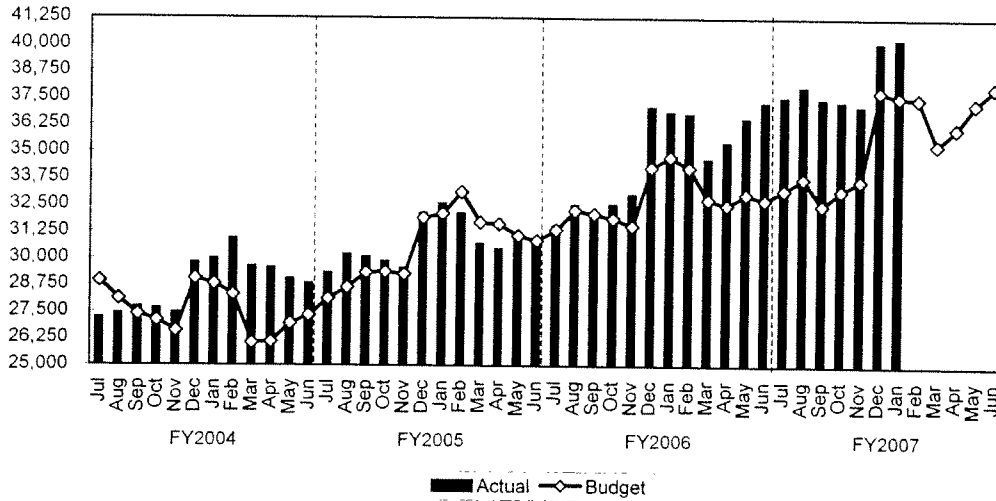


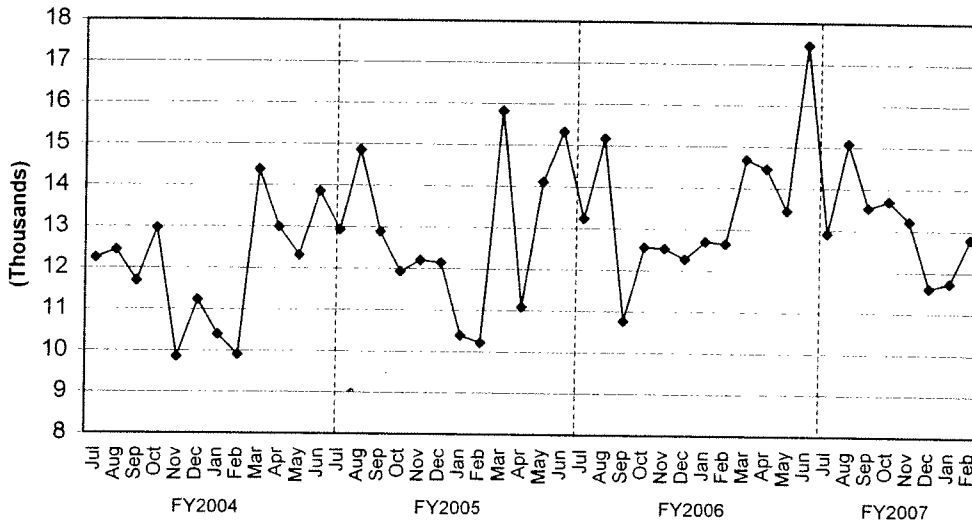
TREND INDICATORS - LOCAL ECONOMY

Sales Tax - Three-Month Rolling Average



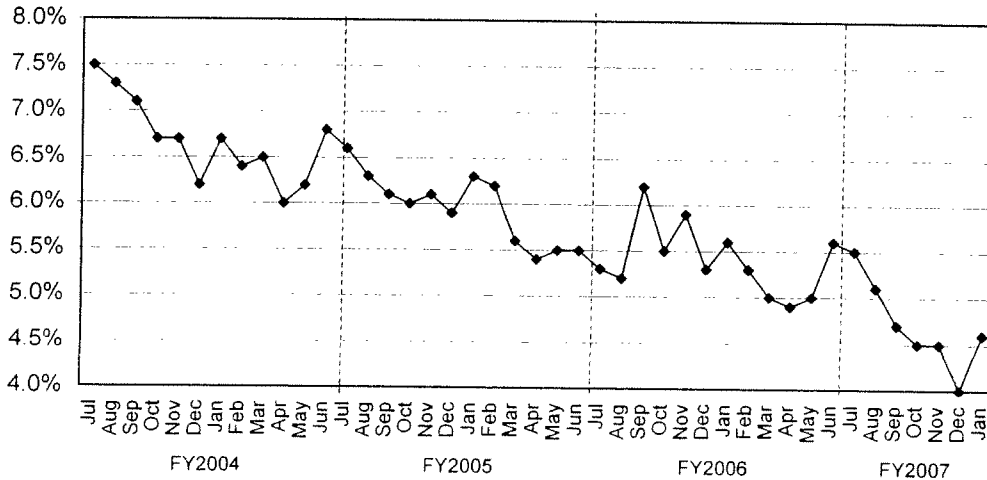
Source: Office of State Comptroller

Building Permits Issued



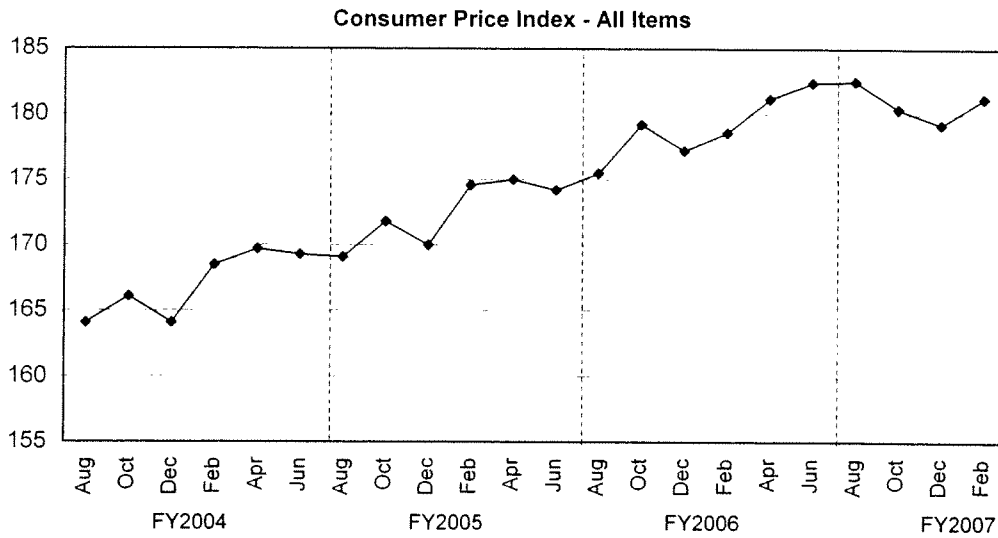
Source: City of Houston Planning and Development Department

Unemployment Rate

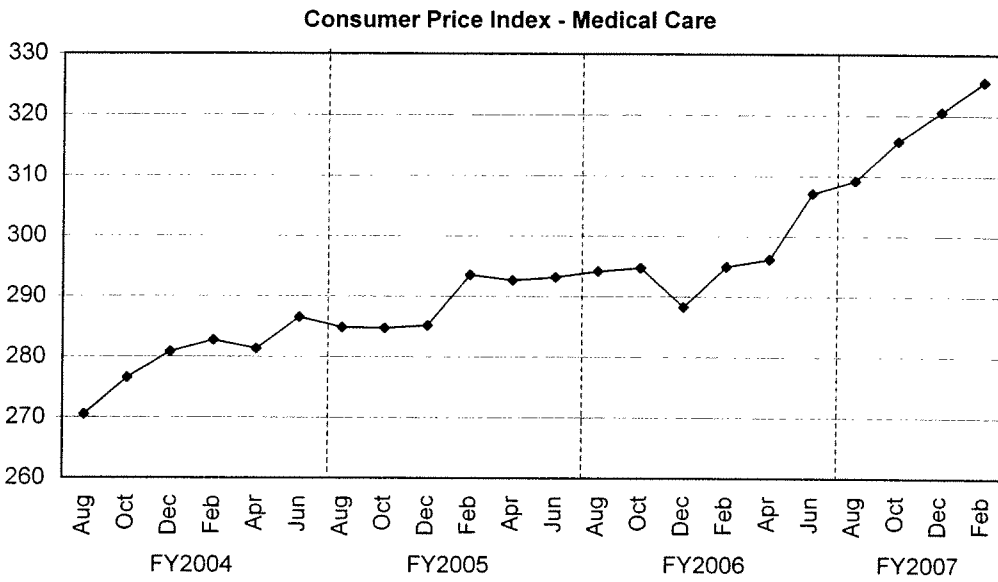


Source: Databook Houston: University of Houston Center for Public Policy; not seasonally adjusted

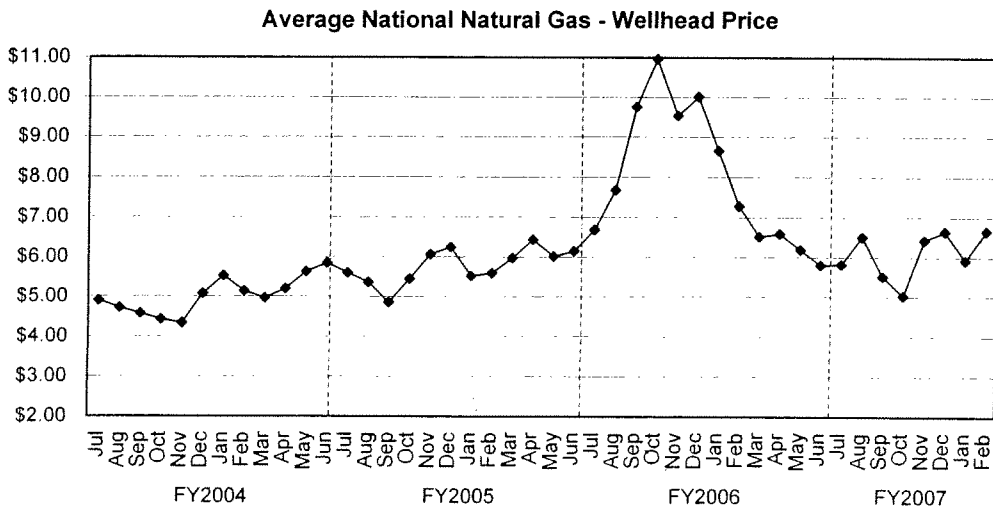
TREND INDICATORS - LOCAL ECONOMY



Source: Bureau of Labor Statistics - Houston, Galveston, Brazoria TX

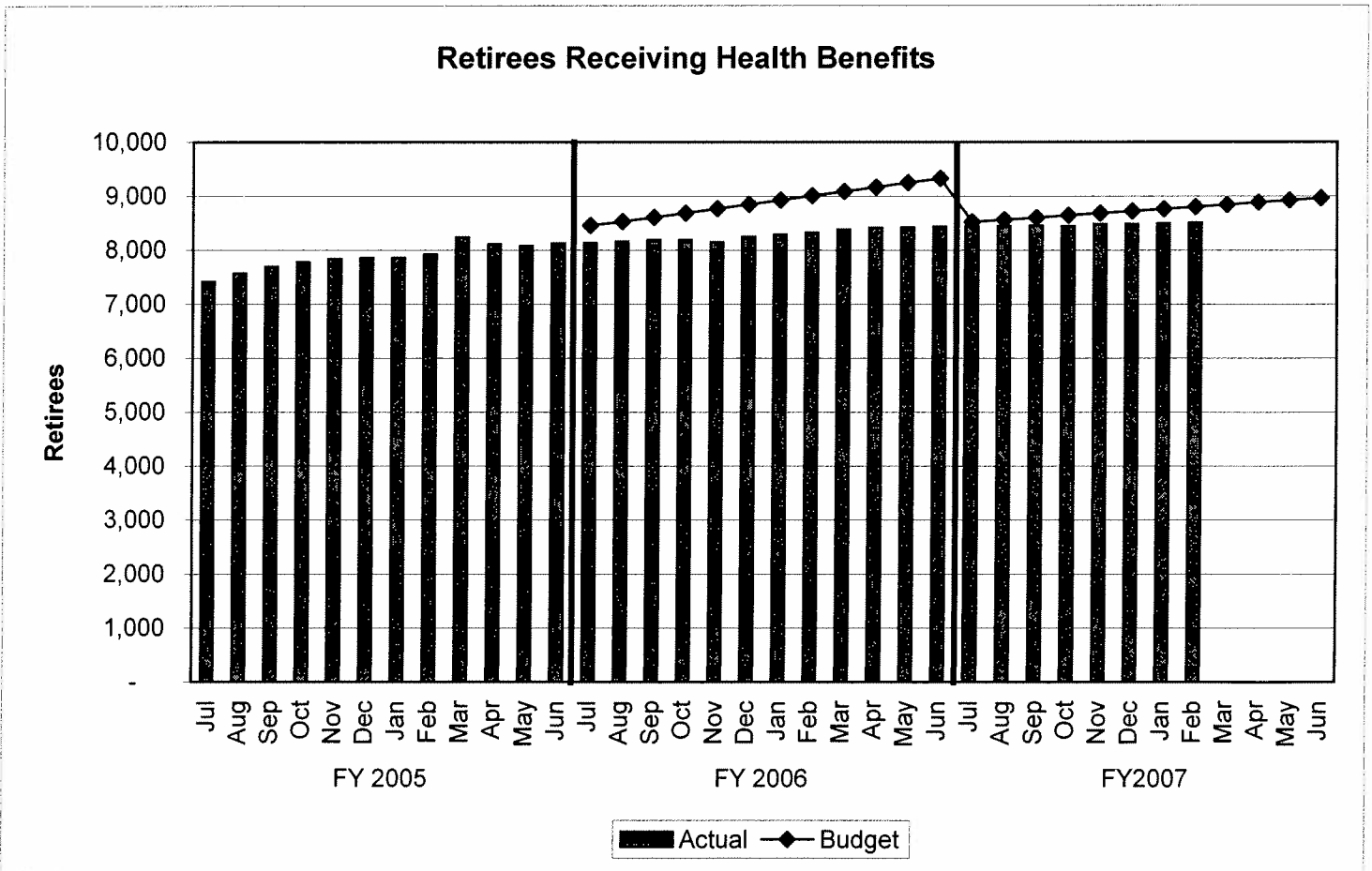
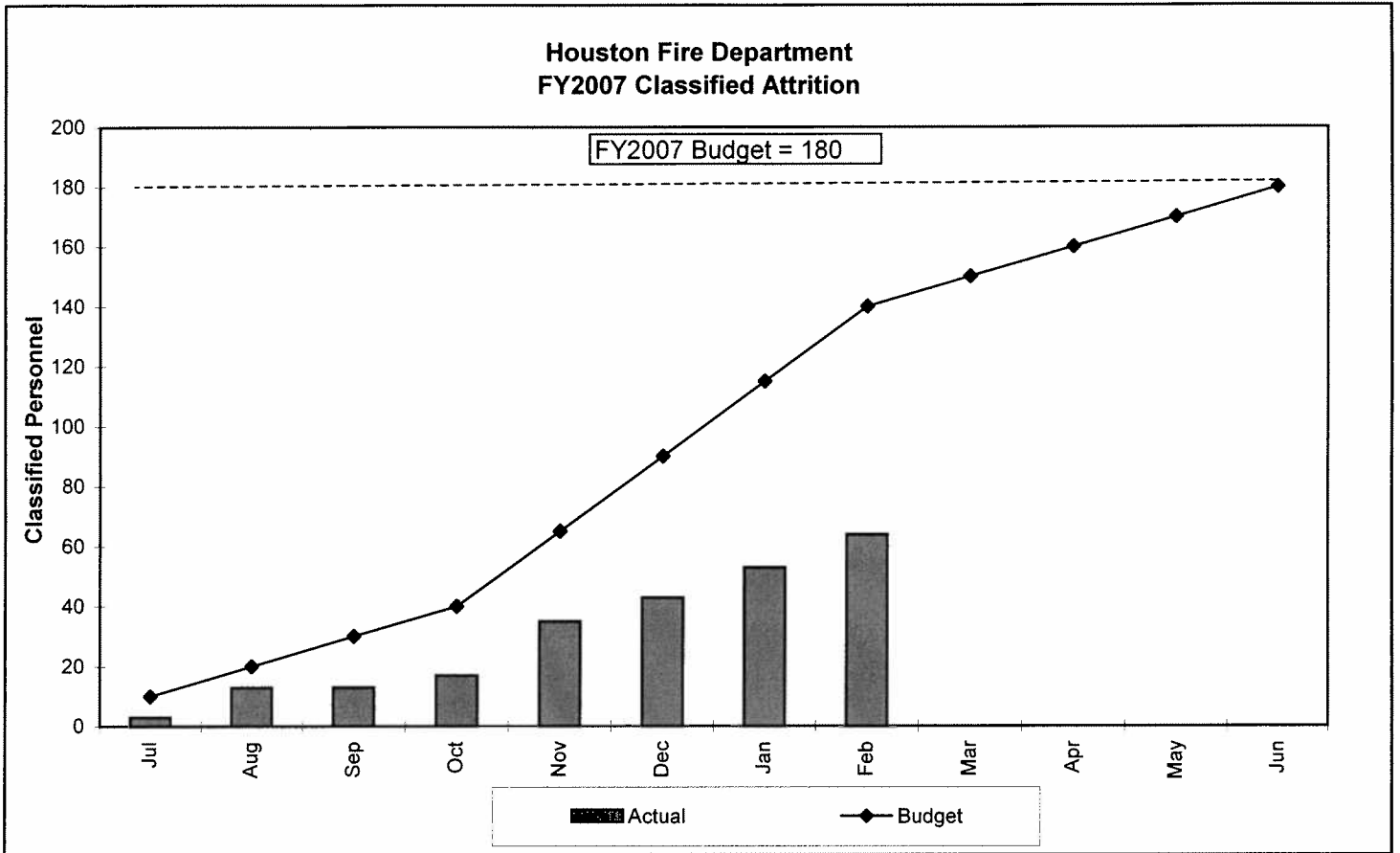


Source: Bureau of Labor Statistics - Houston, Galveston, Brazoria TX

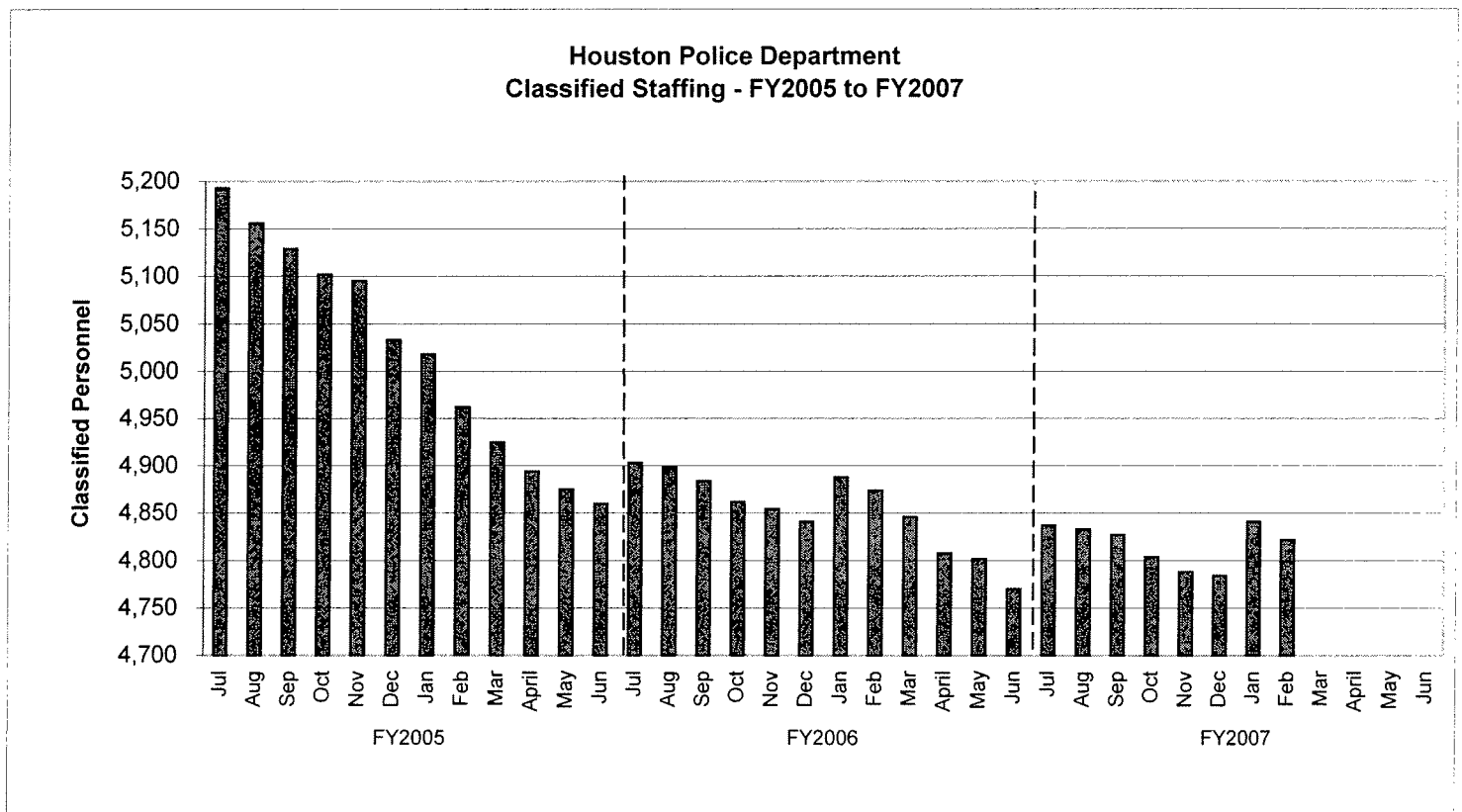
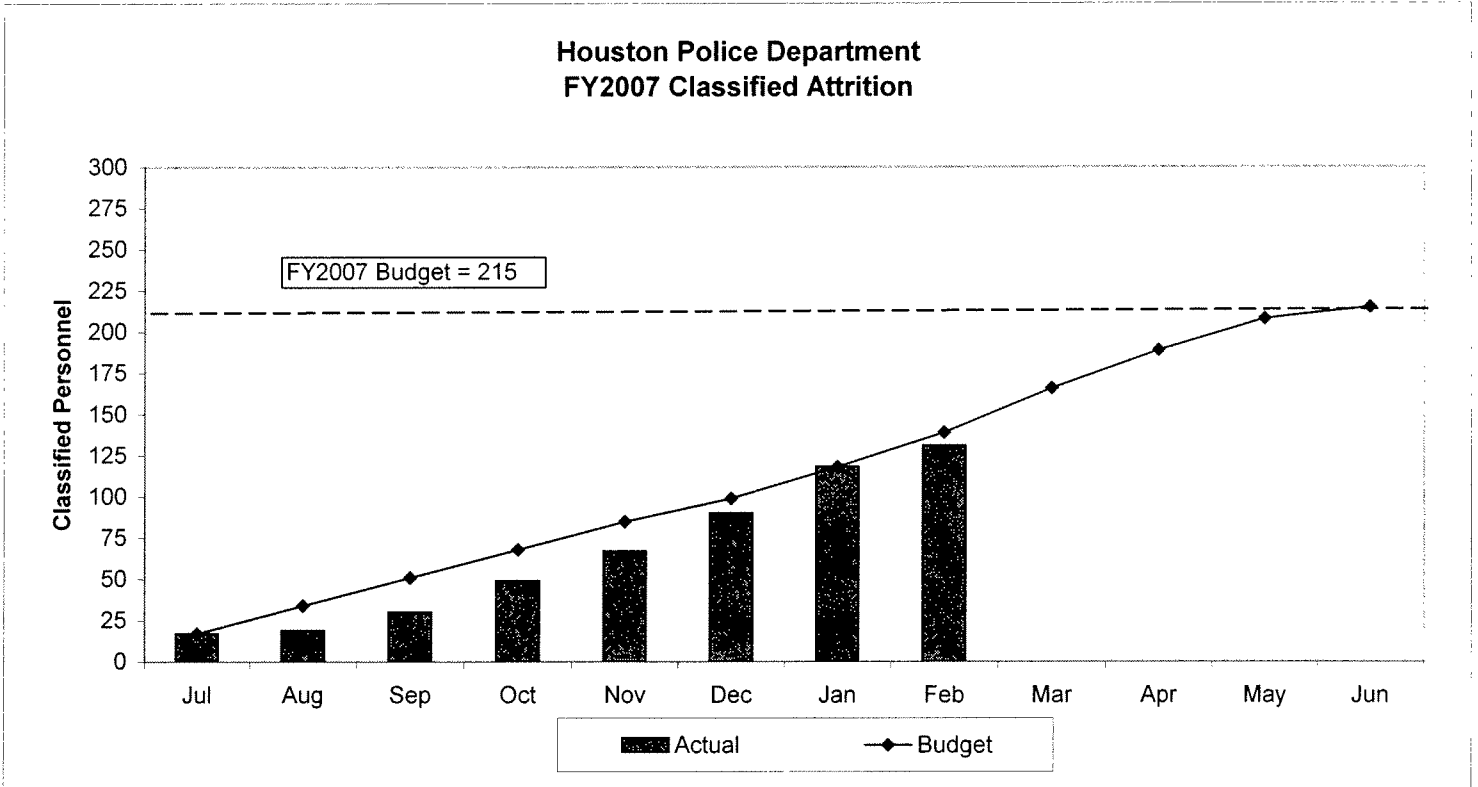


Source: Energy Information Administration/Natural Gas Monthly

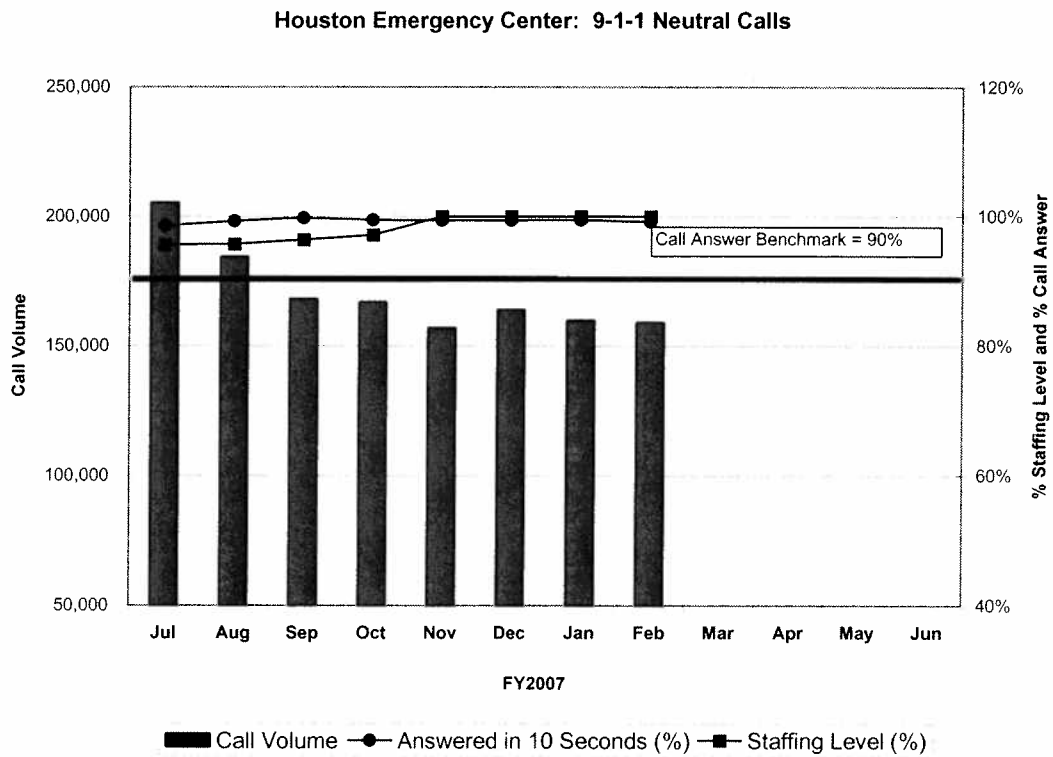
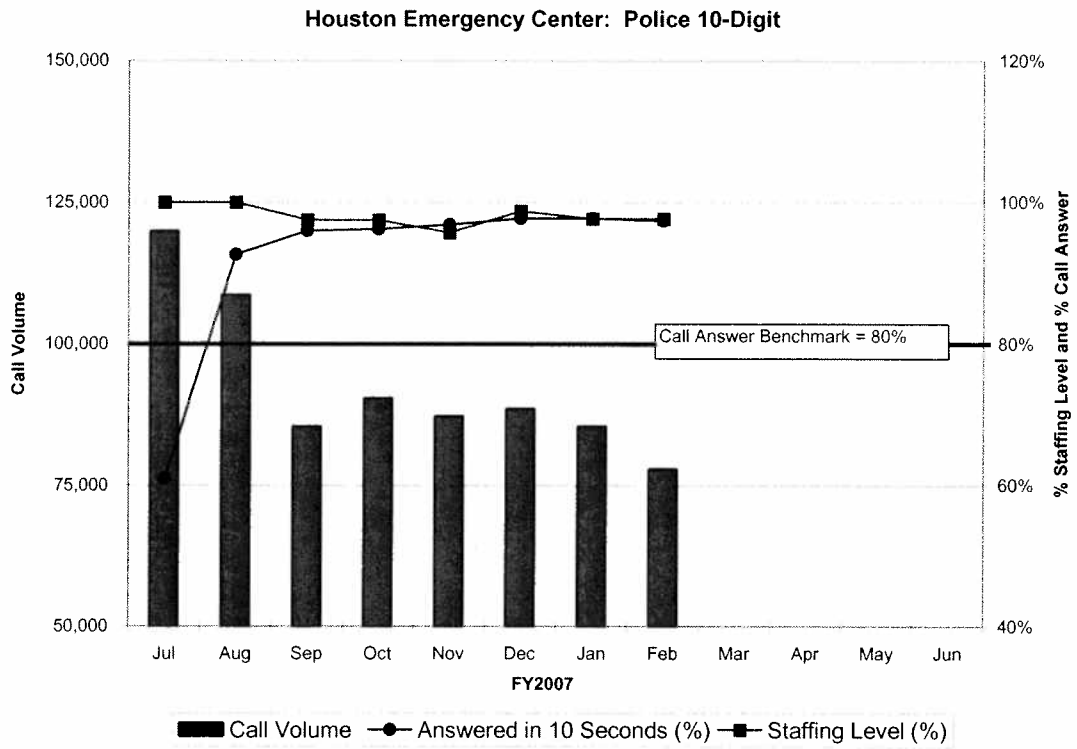
TREND INDICATORS - RETIREMENTS



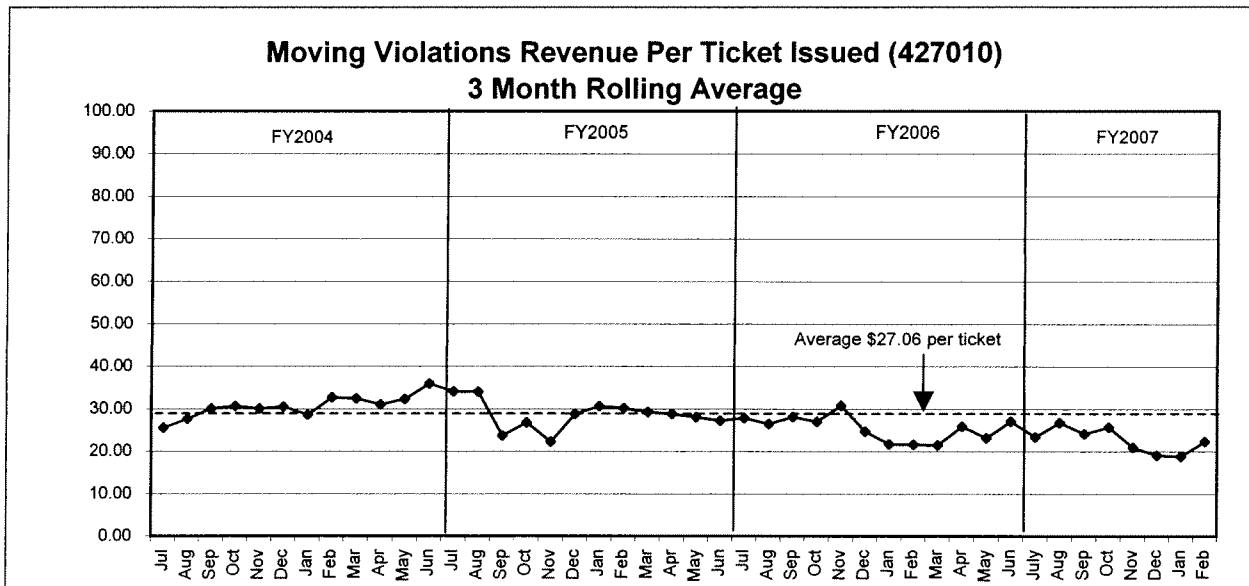
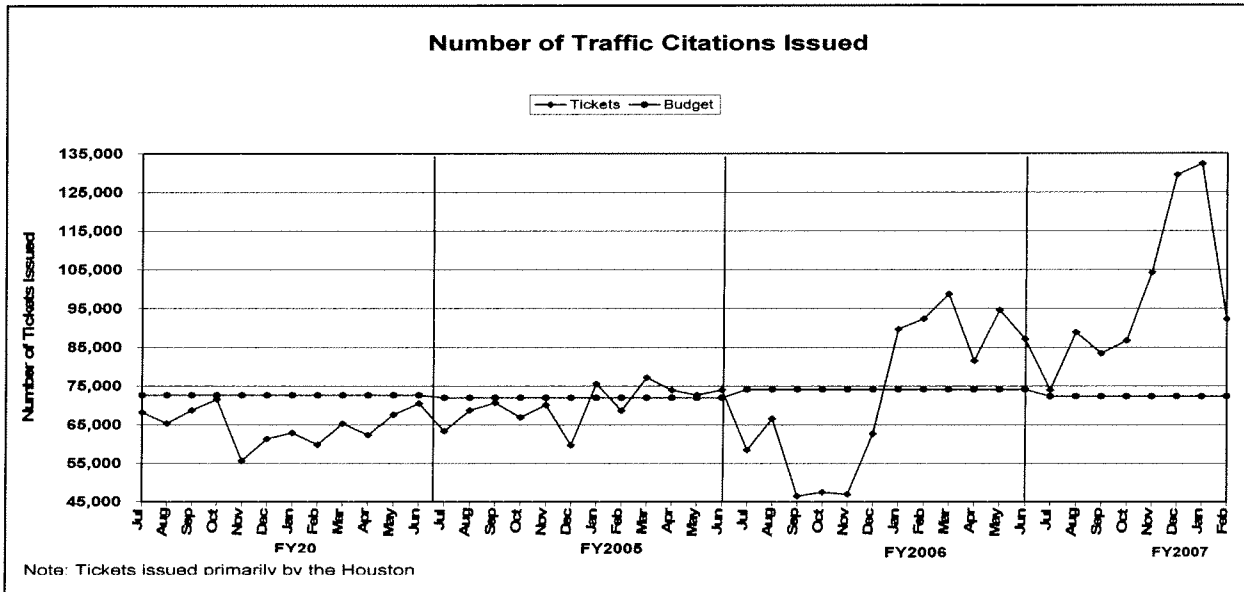
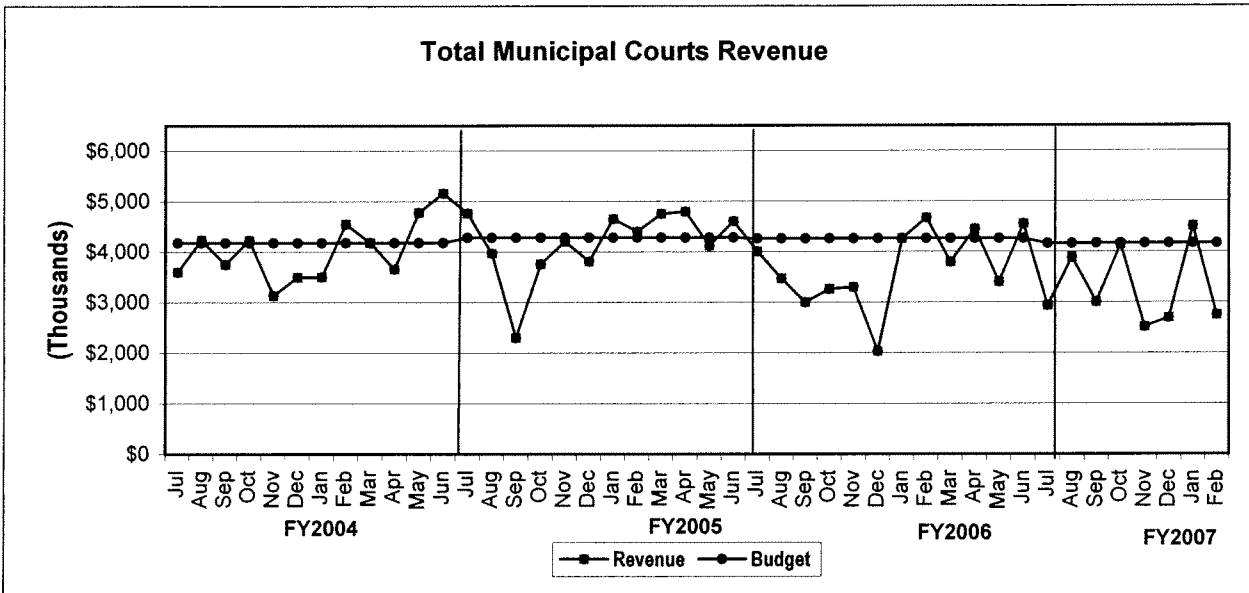
TREND INDICATORS - HIRING AND RETIREMENTS



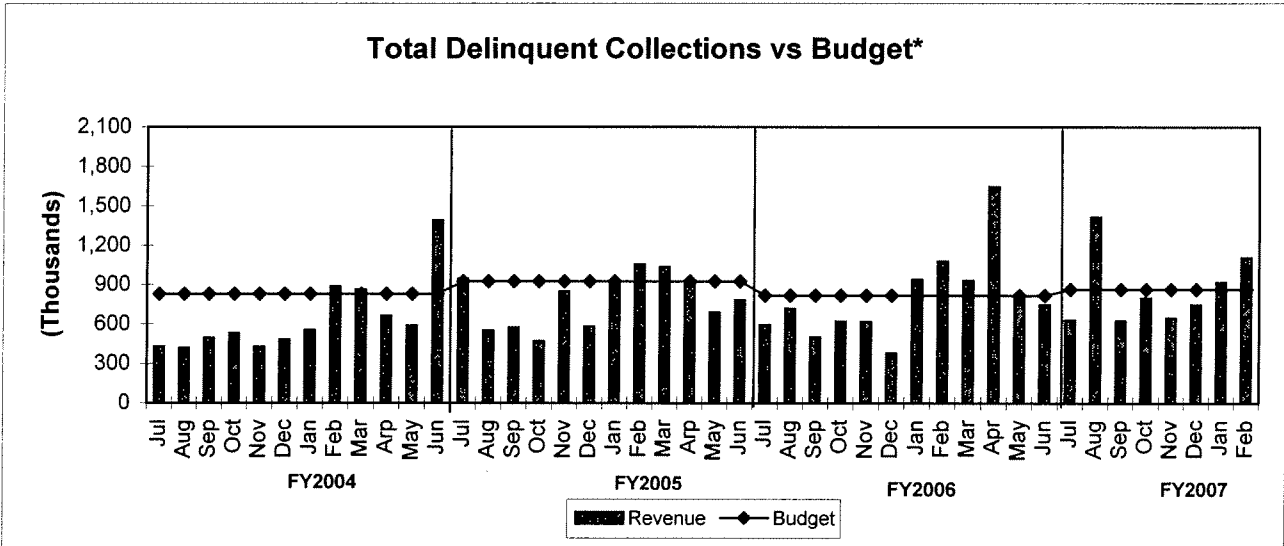
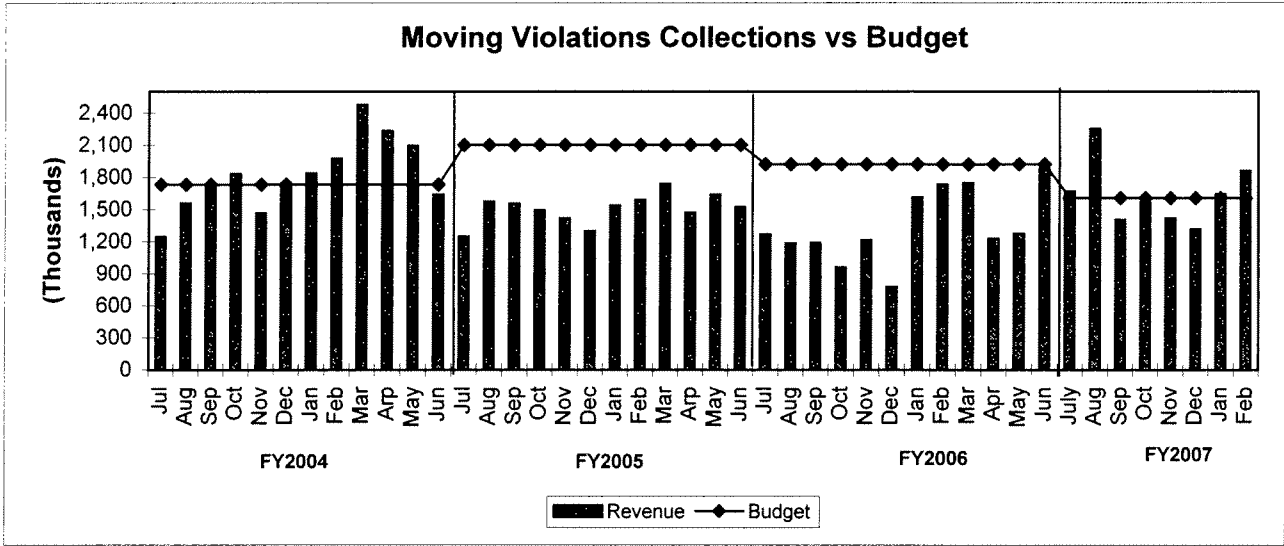
TREND INDICATORS - HOUSTON EMERGENCY CENTER



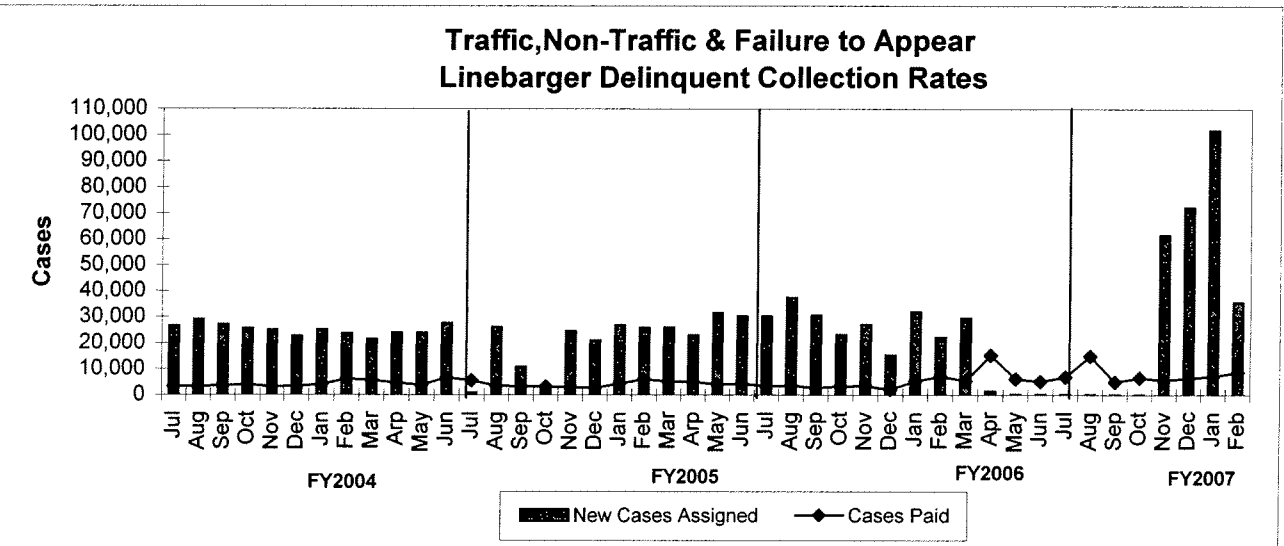
TREND INDICATORS - MUNICIPAL COURTS



TREND INDICATORS - MUNICIPAL COURTS



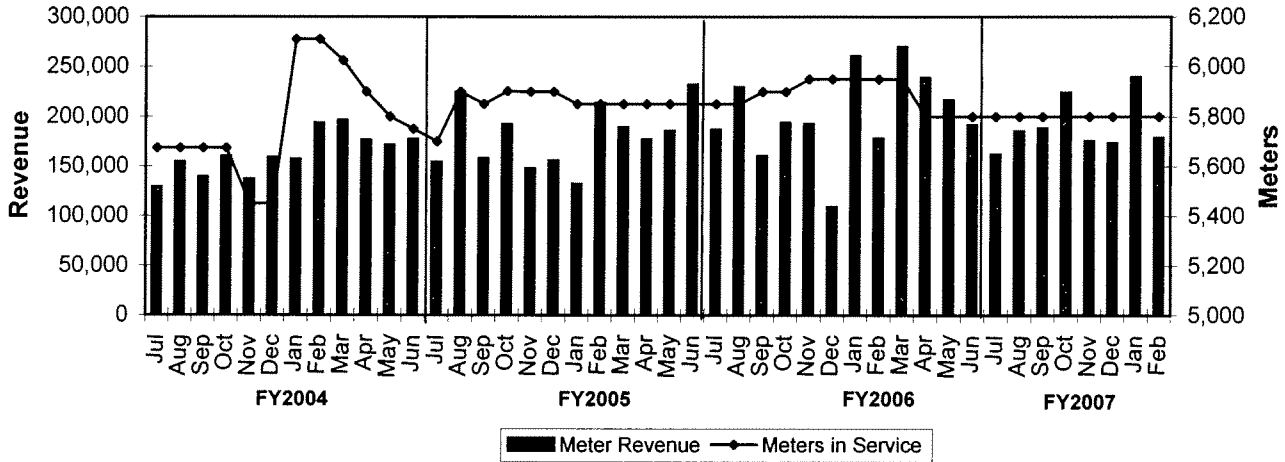
*Net of fees and expenses paid to Linebarger



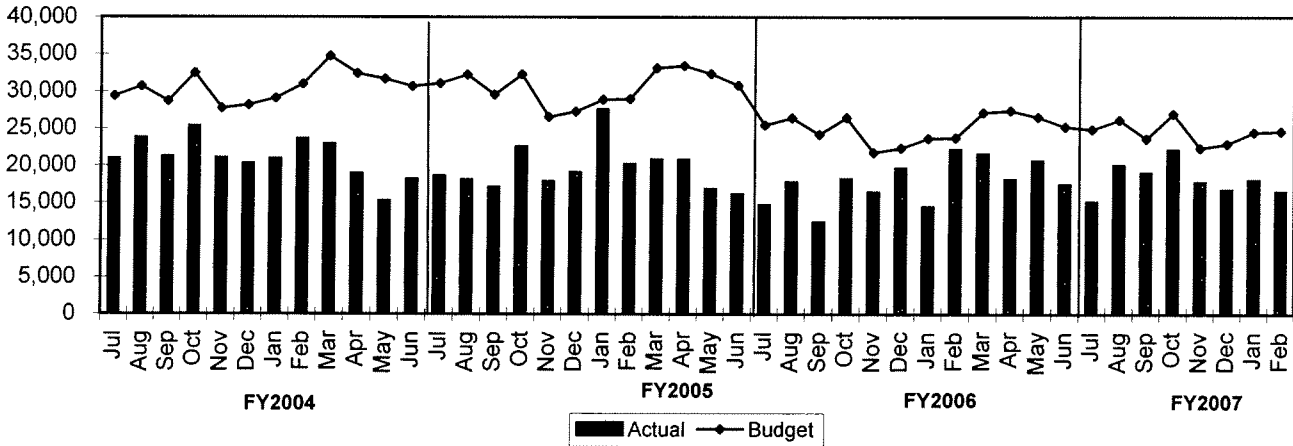
*Excludes Delinquent Parking Collections

TREND INDICATORS - MUNICIPAL COURTS

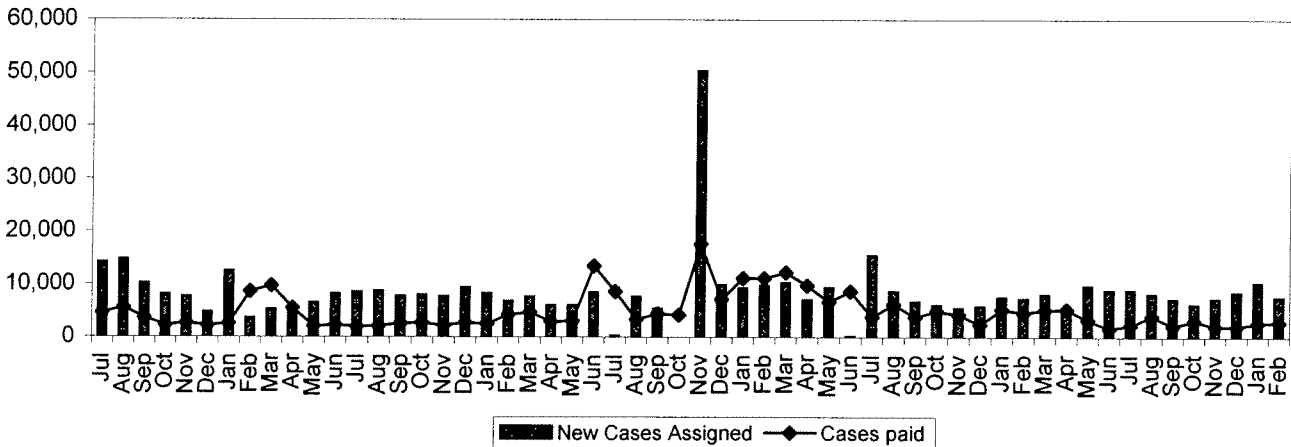
Meter Revenue vs # Meters in Service



Parking Violations vs Budget

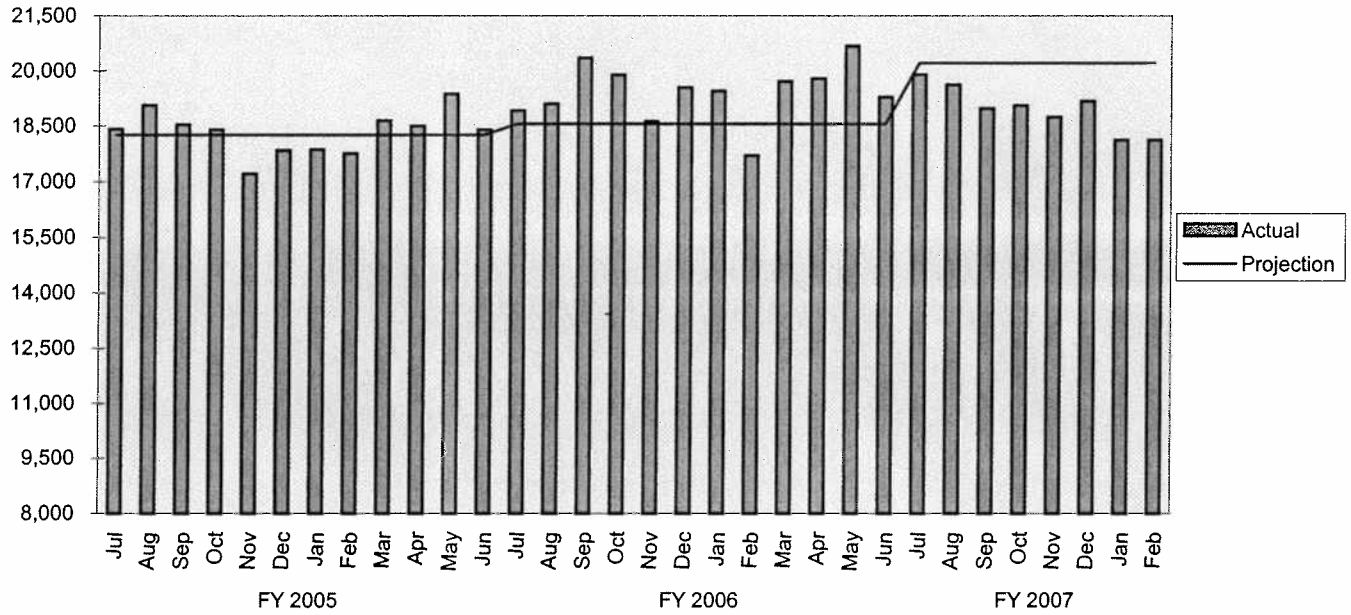


Parking Meter Violations Linearger Delinquent Collections Rate

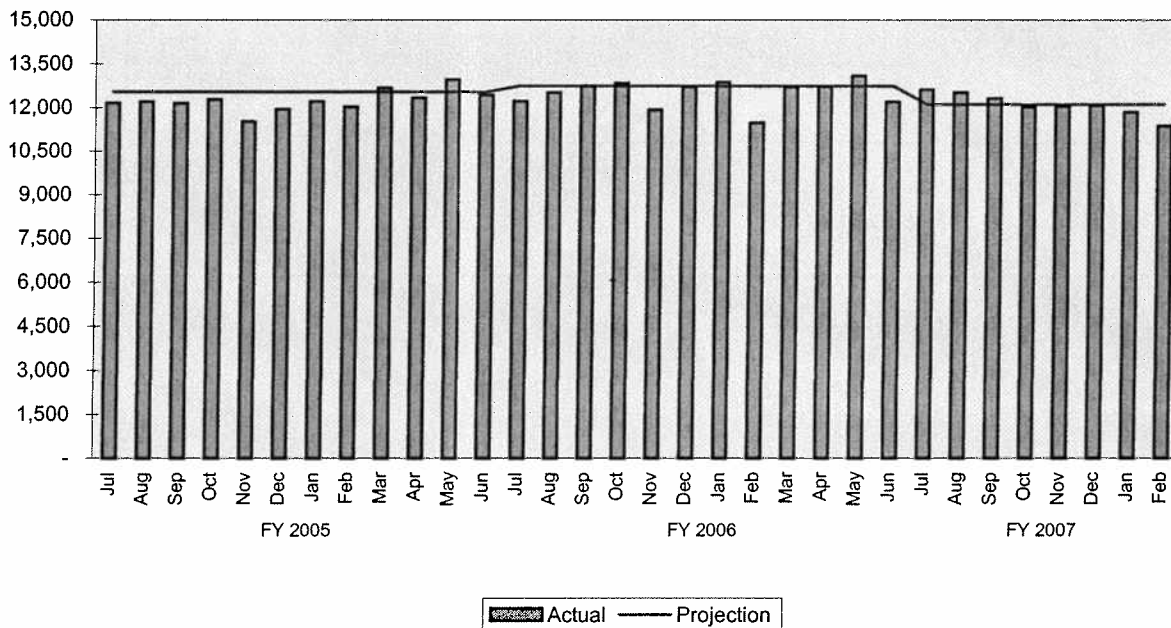


TREND INDICATORS - AMBULANCE SERVICES

EMS Incidents

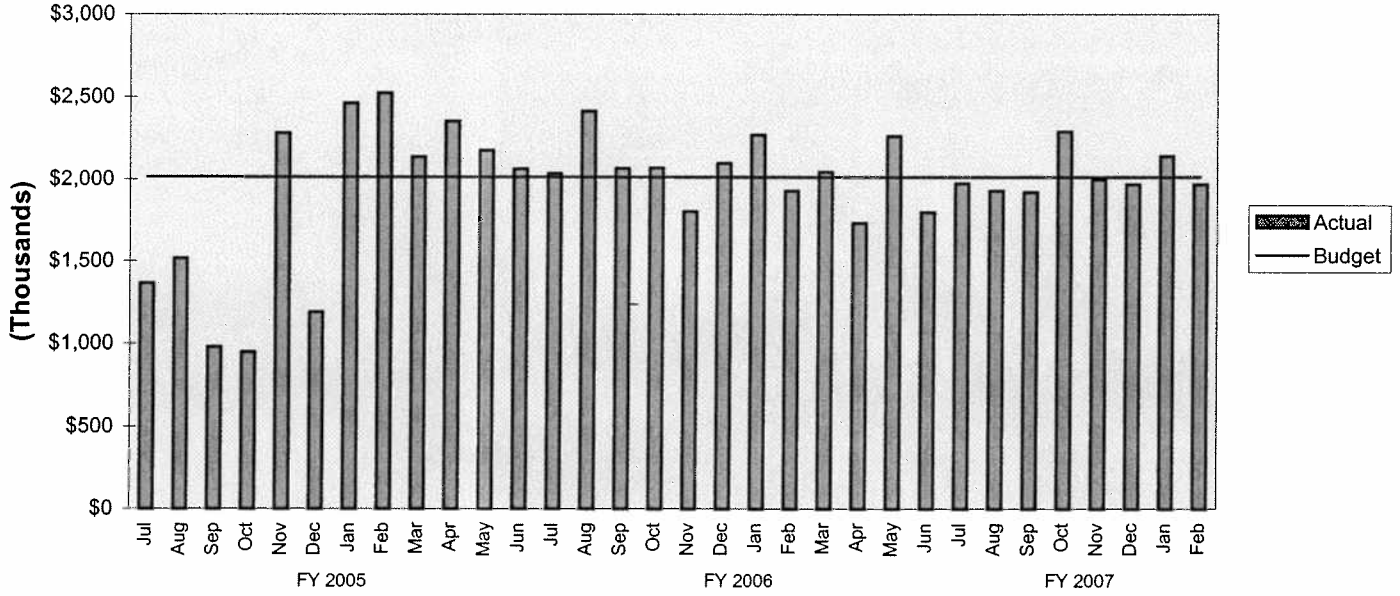


EMS Transports

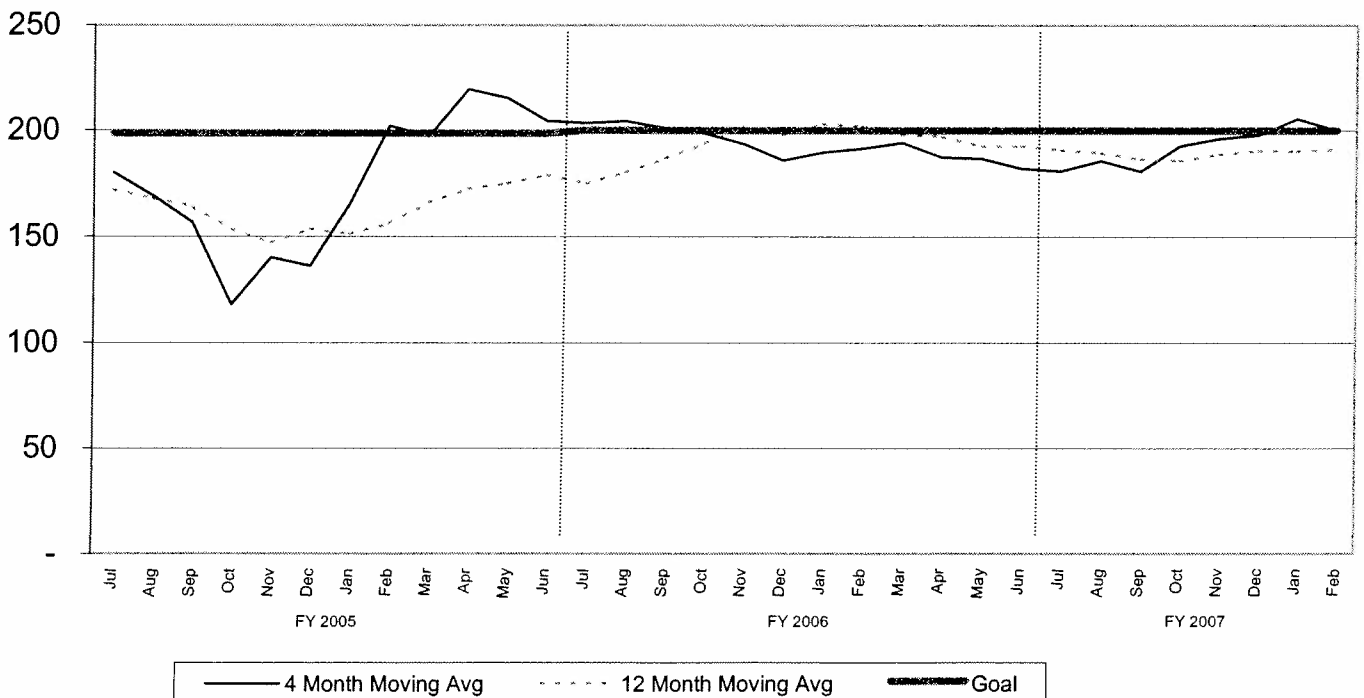


TREND INDICATORS - AMBULANCE SERVICES

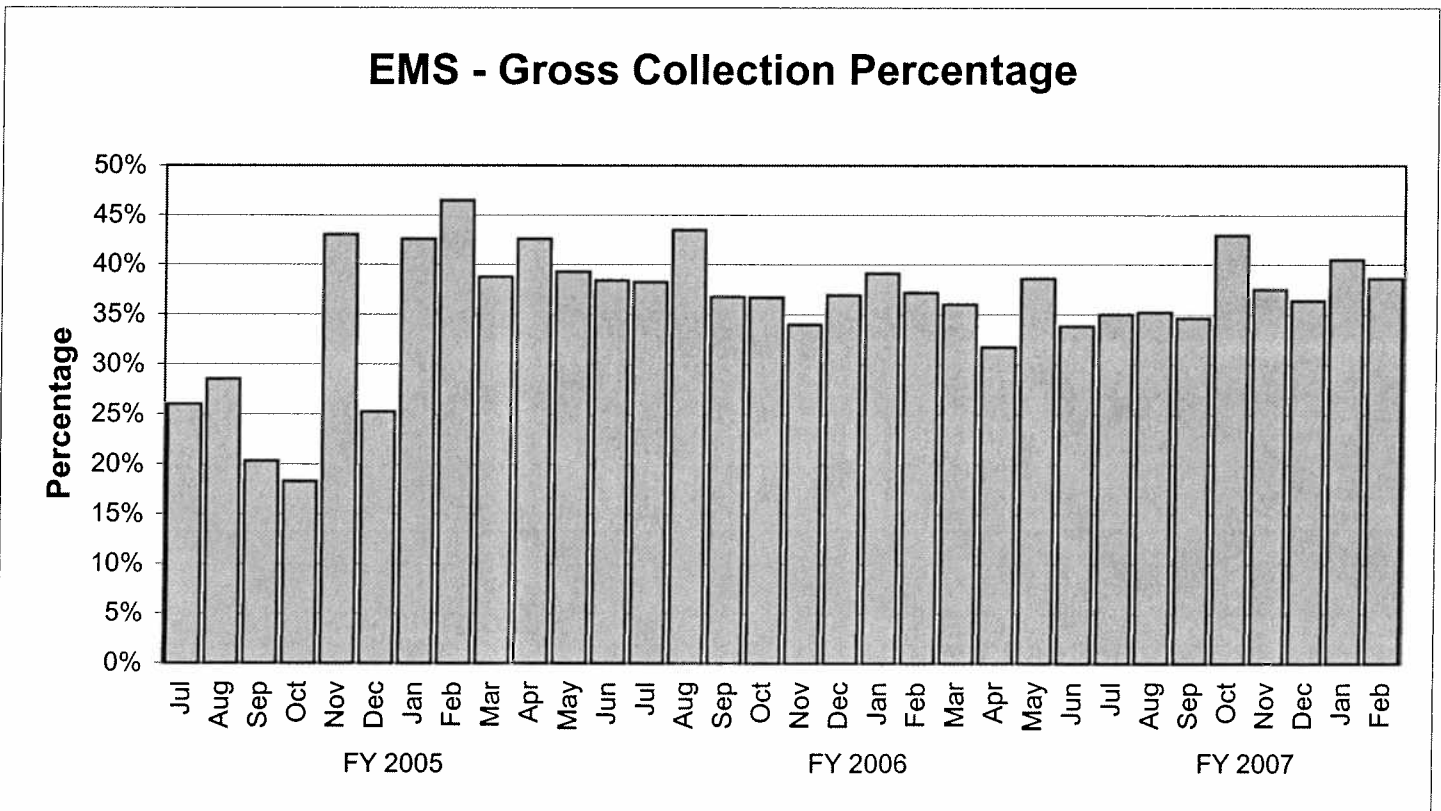
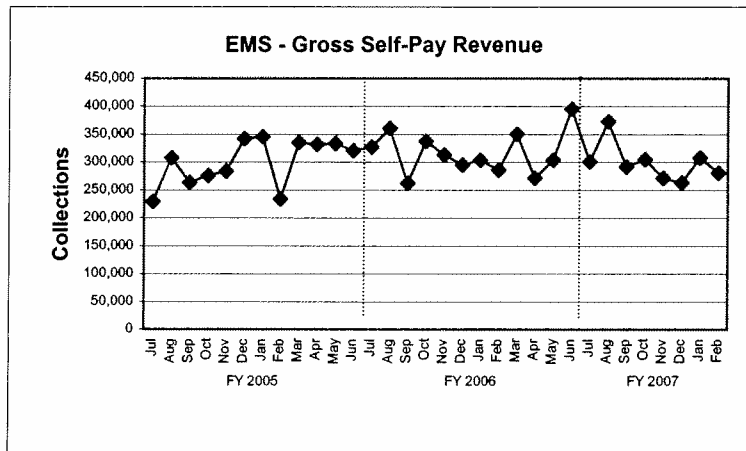
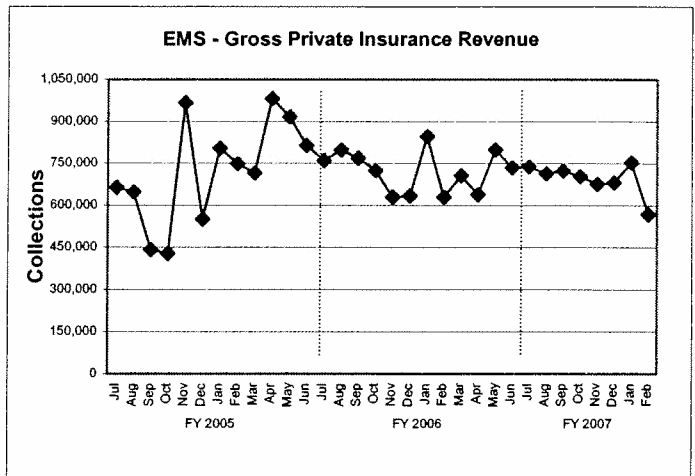
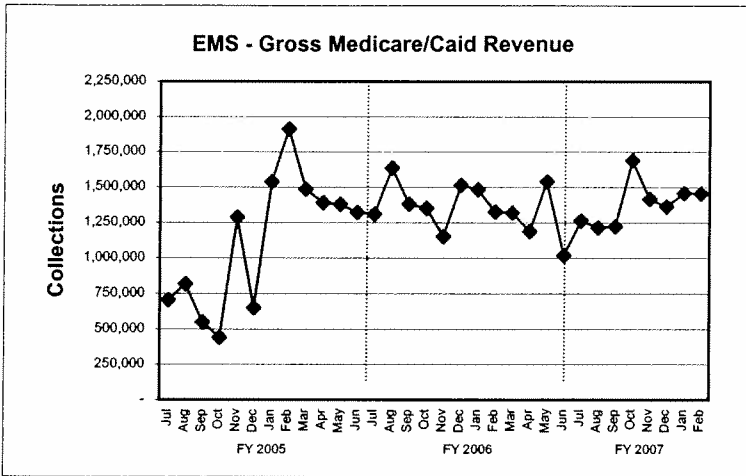
EMS Revenue (Net Collections)



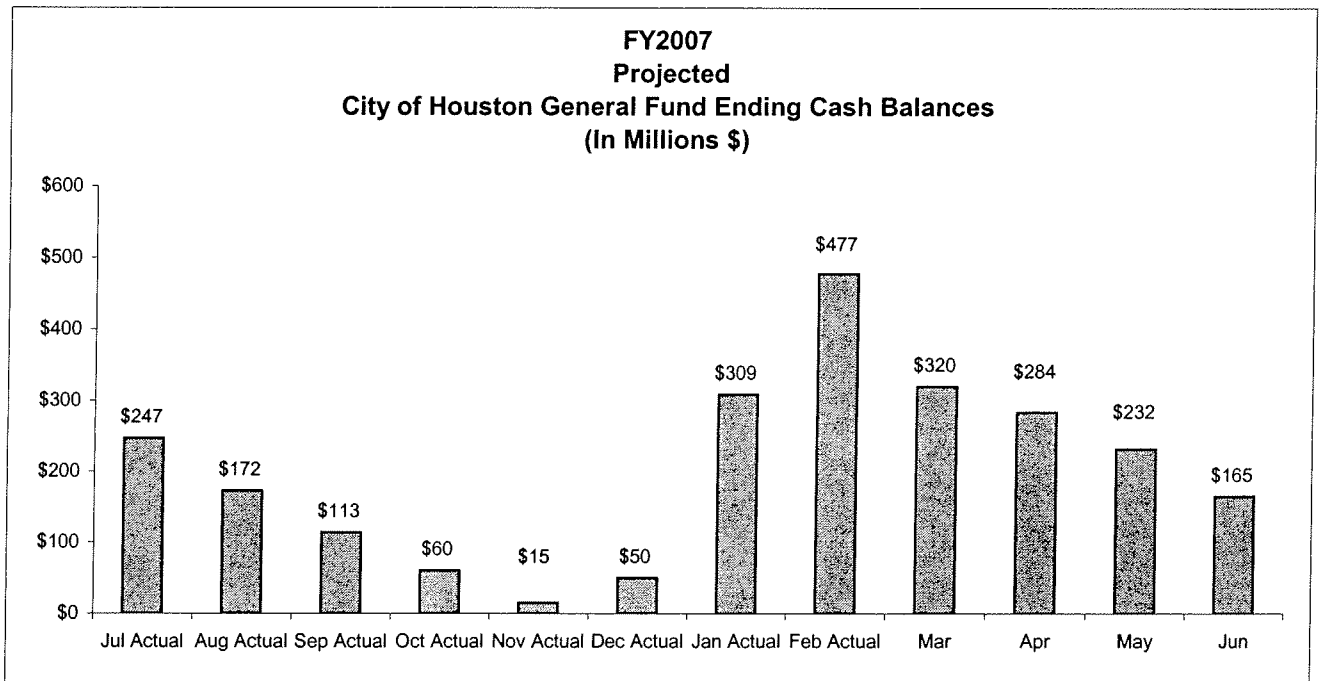
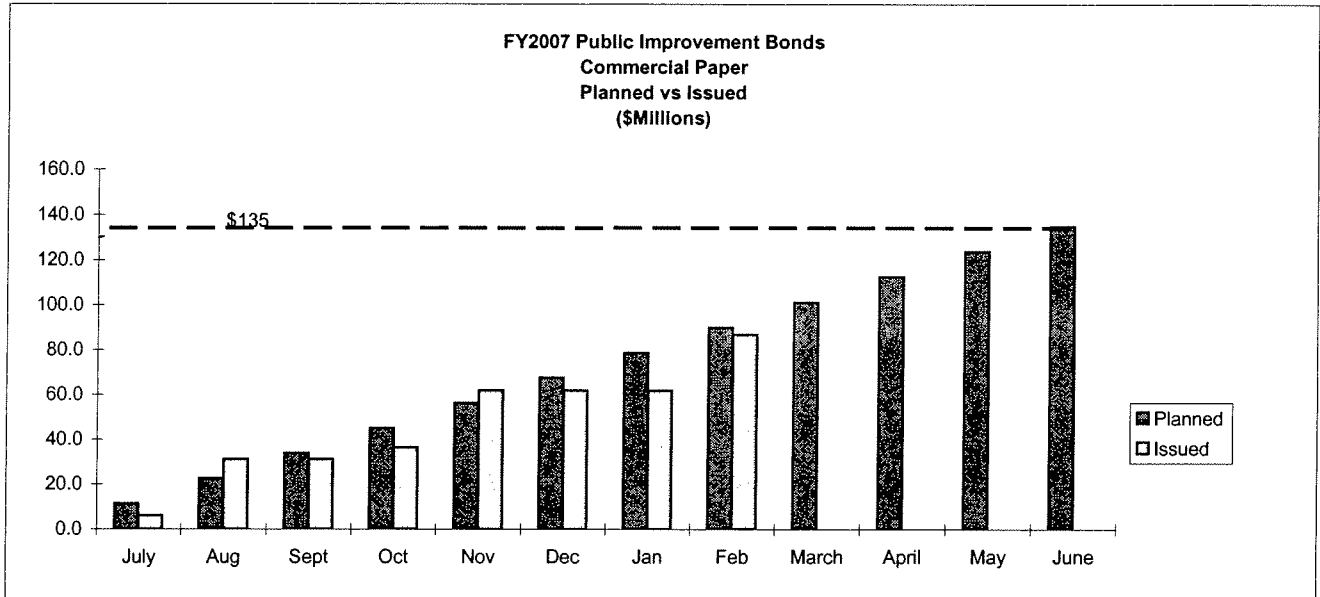
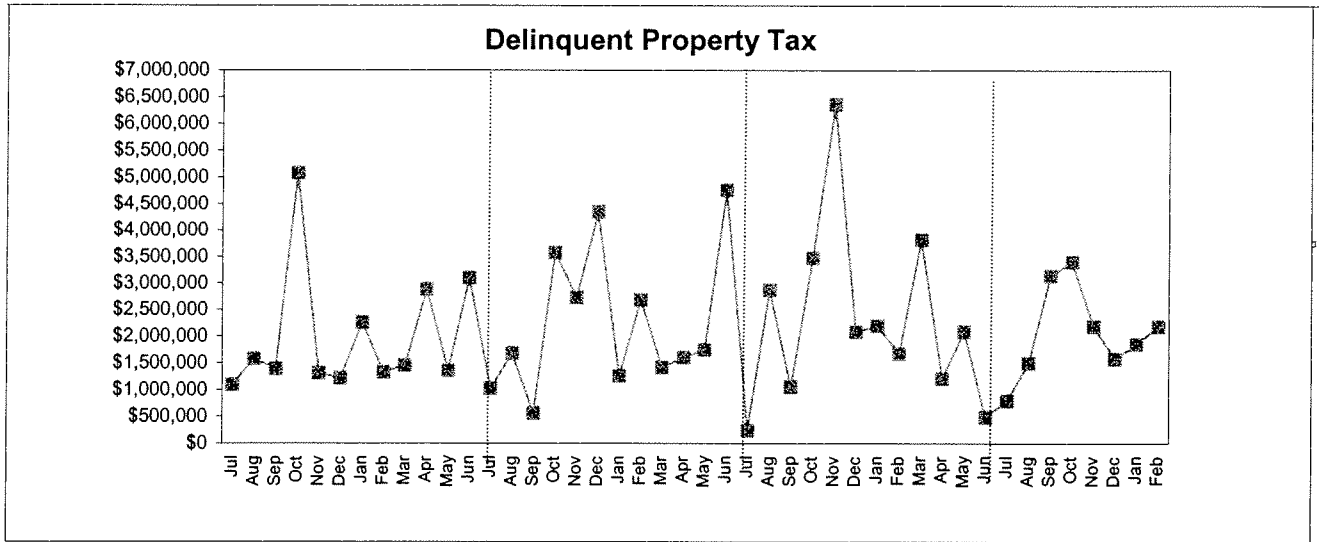
4 Month and 12 Month Moving Average EMS Revenue Per Transport



TREND INDICATORS - AMBULANCE SERVICES

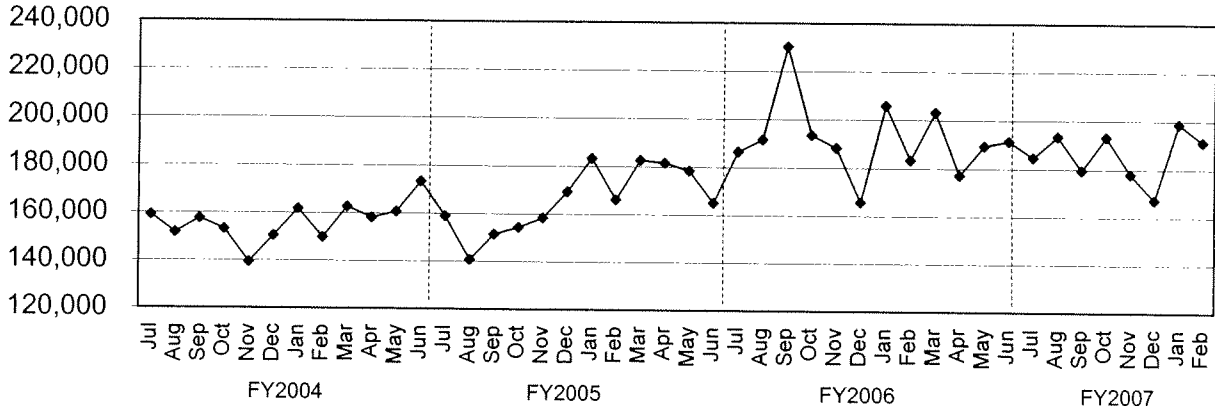


TREND INDICATORS - MISCELLANEOUS



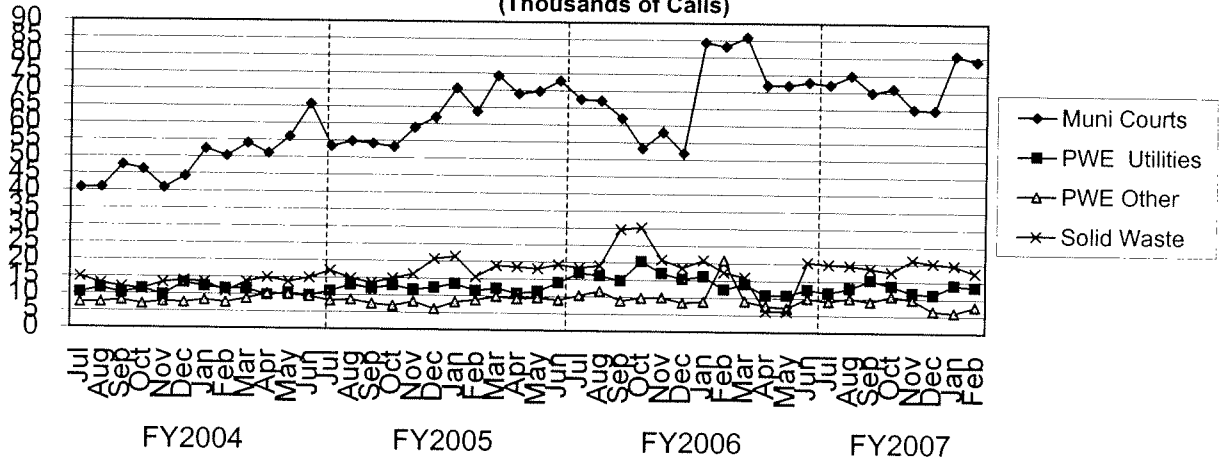
TREND INDICATORS - MISCELLANEOUS

3-1-1 Call Volume



3-1-1 became fully operational in August 2001

Operator Assisted 3-1-1 Call Distribution (Thousands of Calls)



4 largest users of operator assisted 3-1-1 calls.