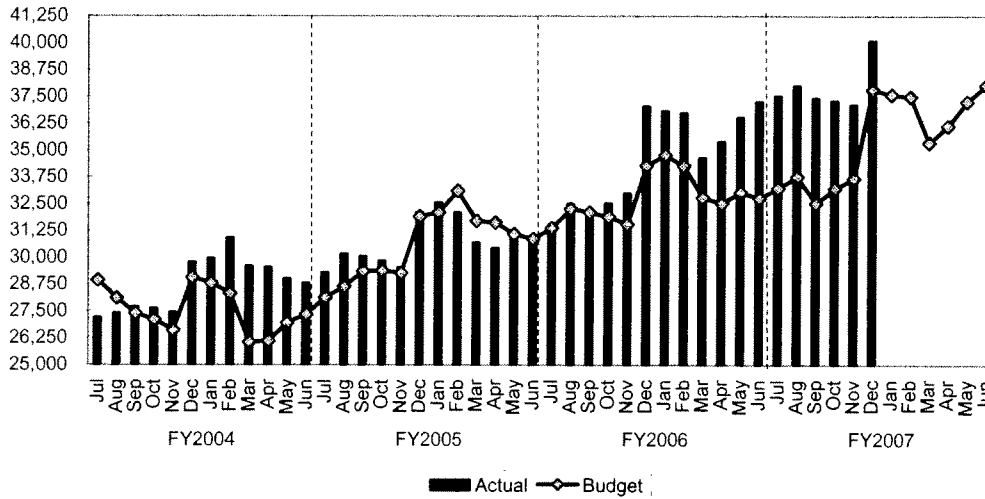


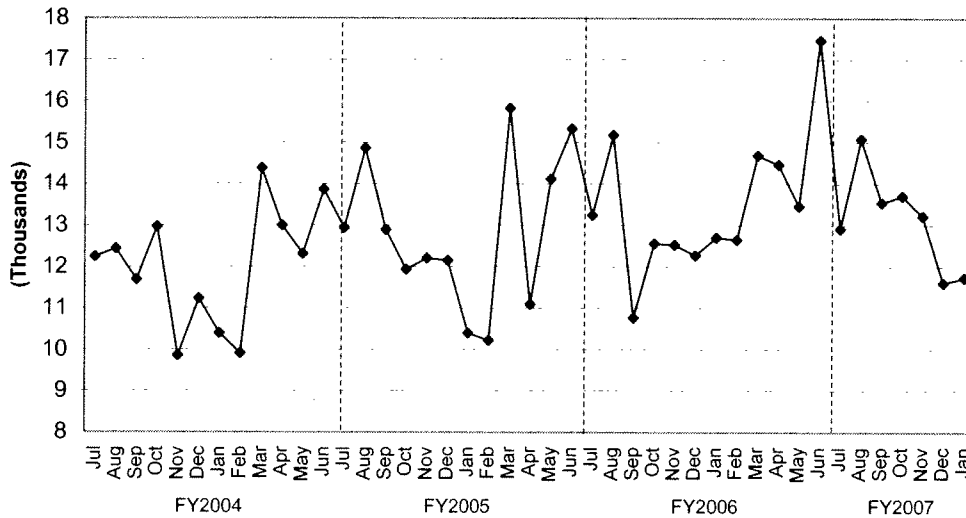
TREND INDICATORS - LOCAL ECONOMY

Sales Tax - Three-Month Rolling Average



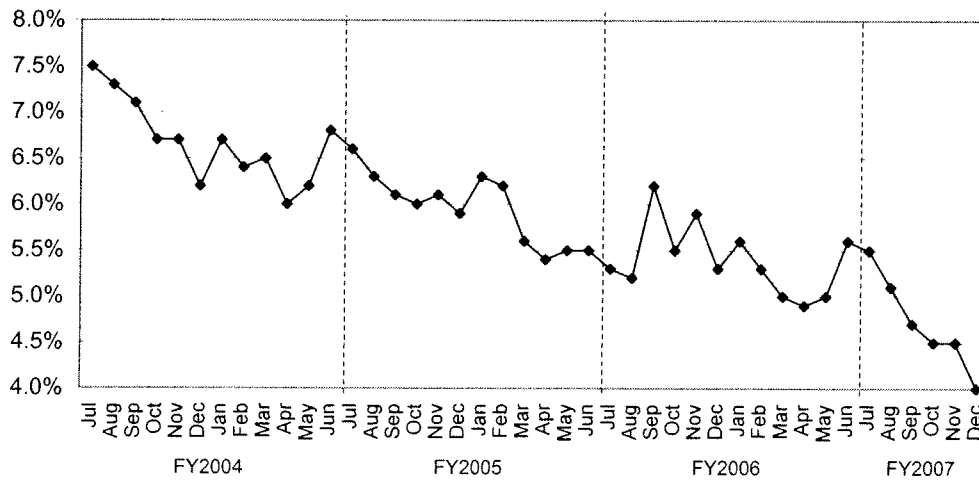
Source: Office of State Comptroller

Building Permits Issued



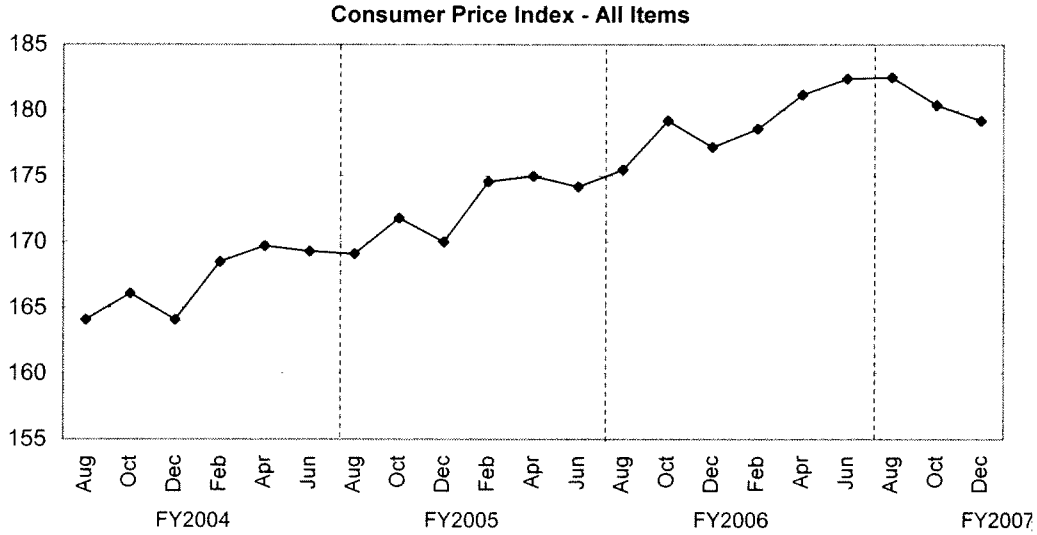
Source: City of Houston Planning and Development Department

Unemployment Rate

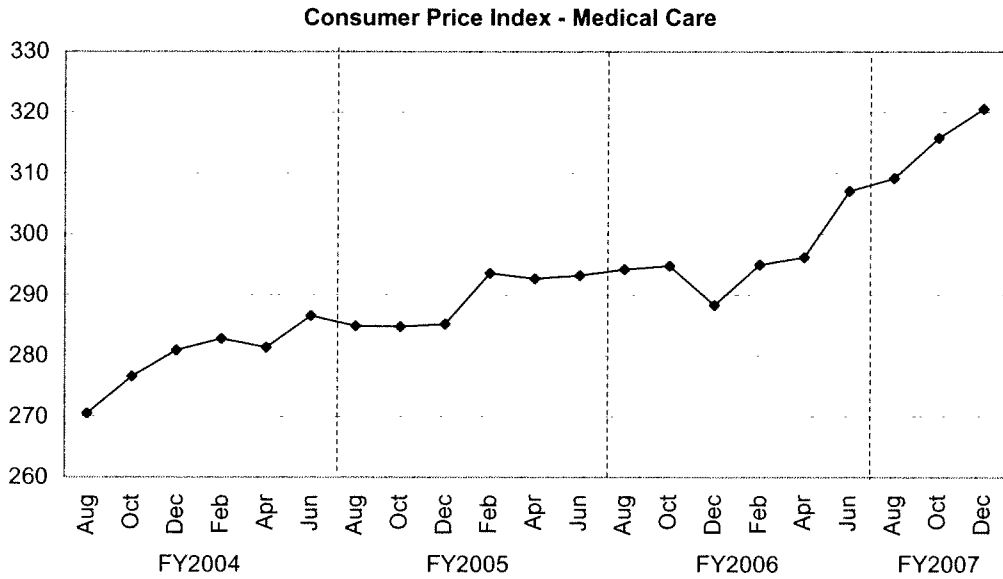


Source: Databook Houston; University of Houston Center for Public Policy; not seasonally adjusted

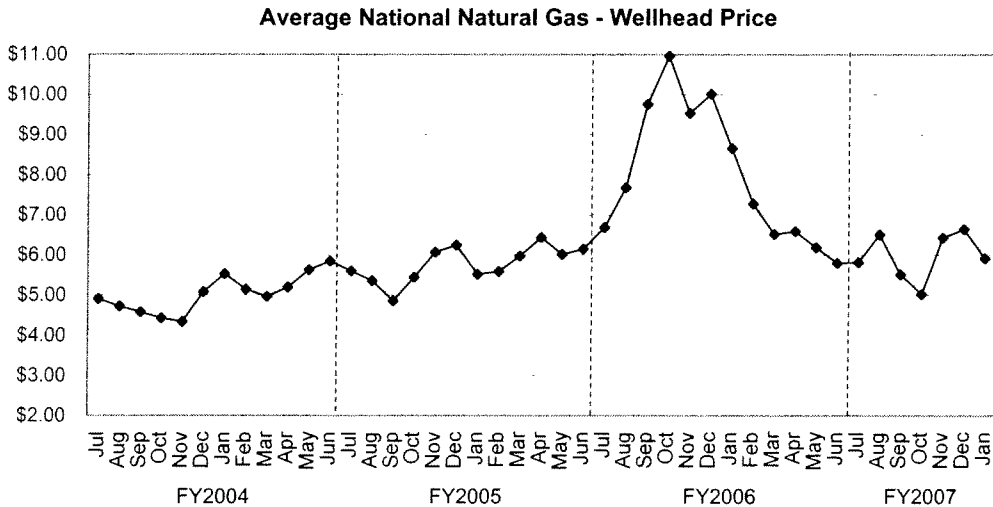
TREND INDICATORS - LOCAL ECONOMY



Source: Bureau of Labor Statistics - Houston, Galveston, Brazoria TX



Source: Bureau of Labor Statistics - Houston, Galveston, Brazoria TX

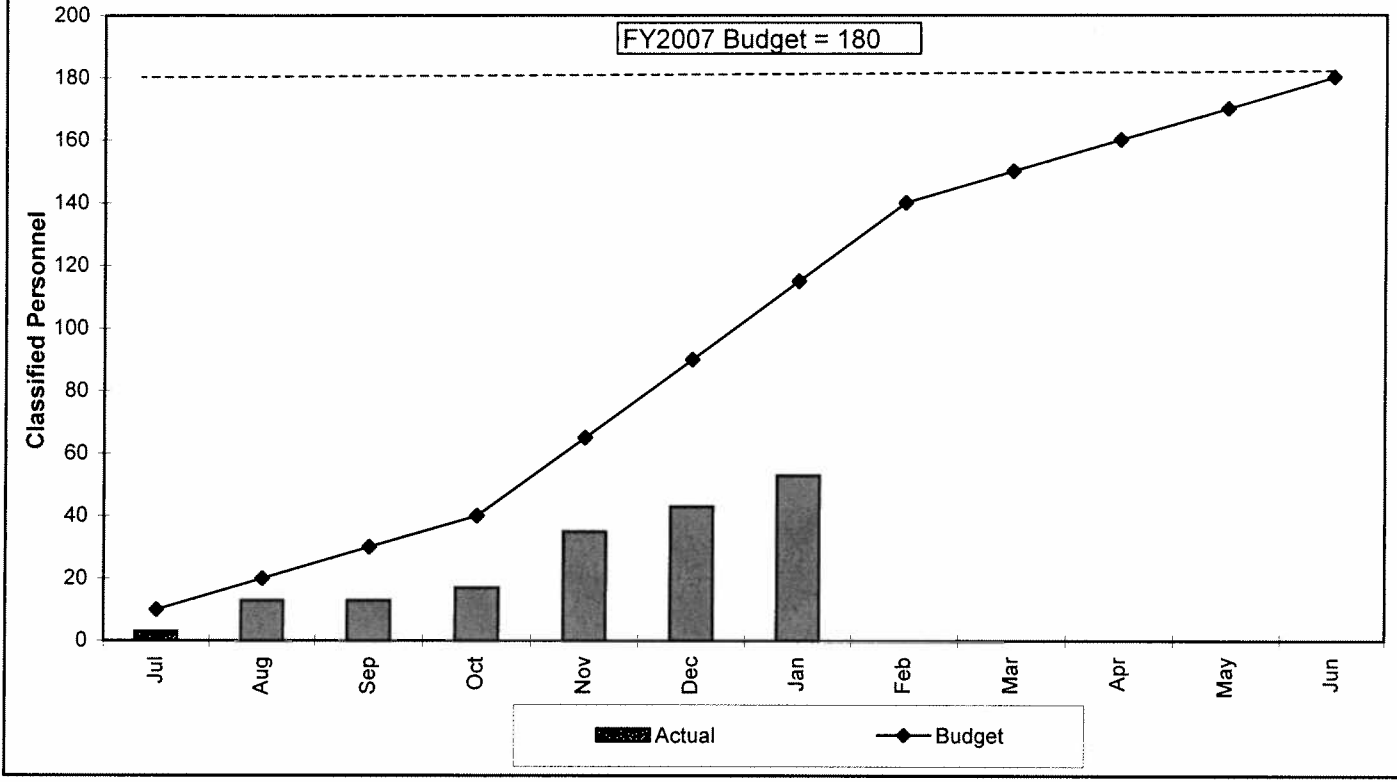


Source: Energy Information Administration/Natural Gas Monthly

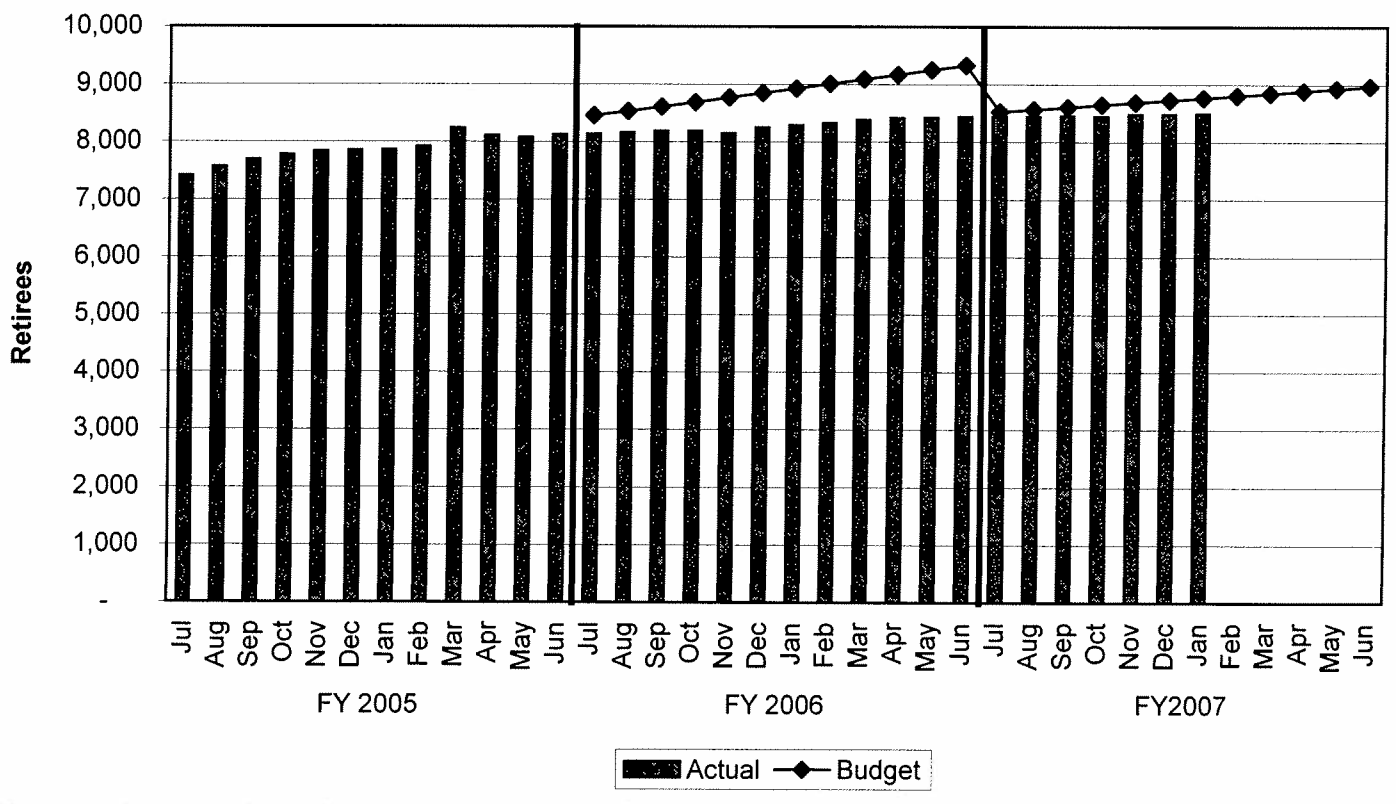
TREND INDICATORS - RETIREMENTS

Houston Fire Department
FY2007 Classified Attrition

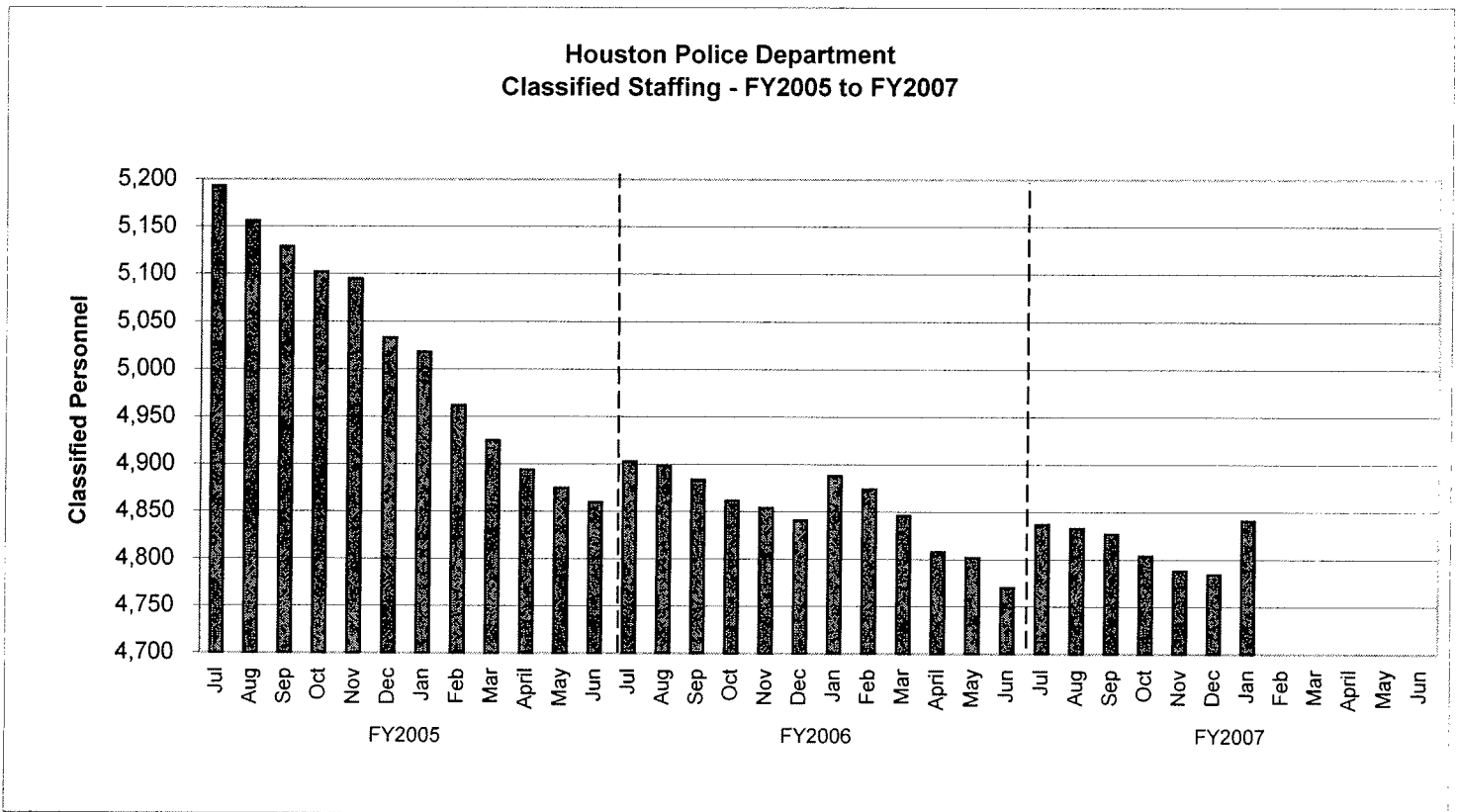
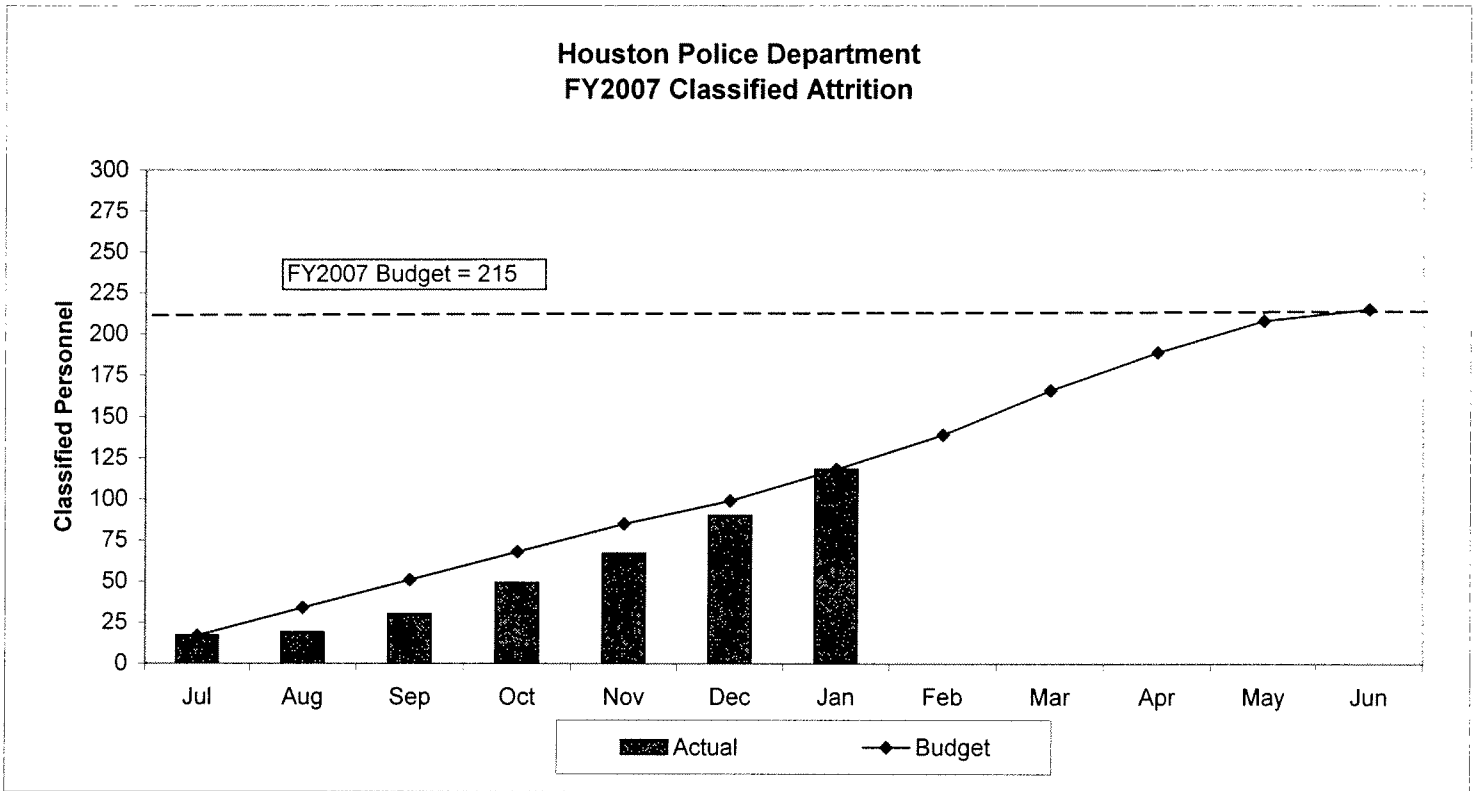
FY2007 Budget = 180



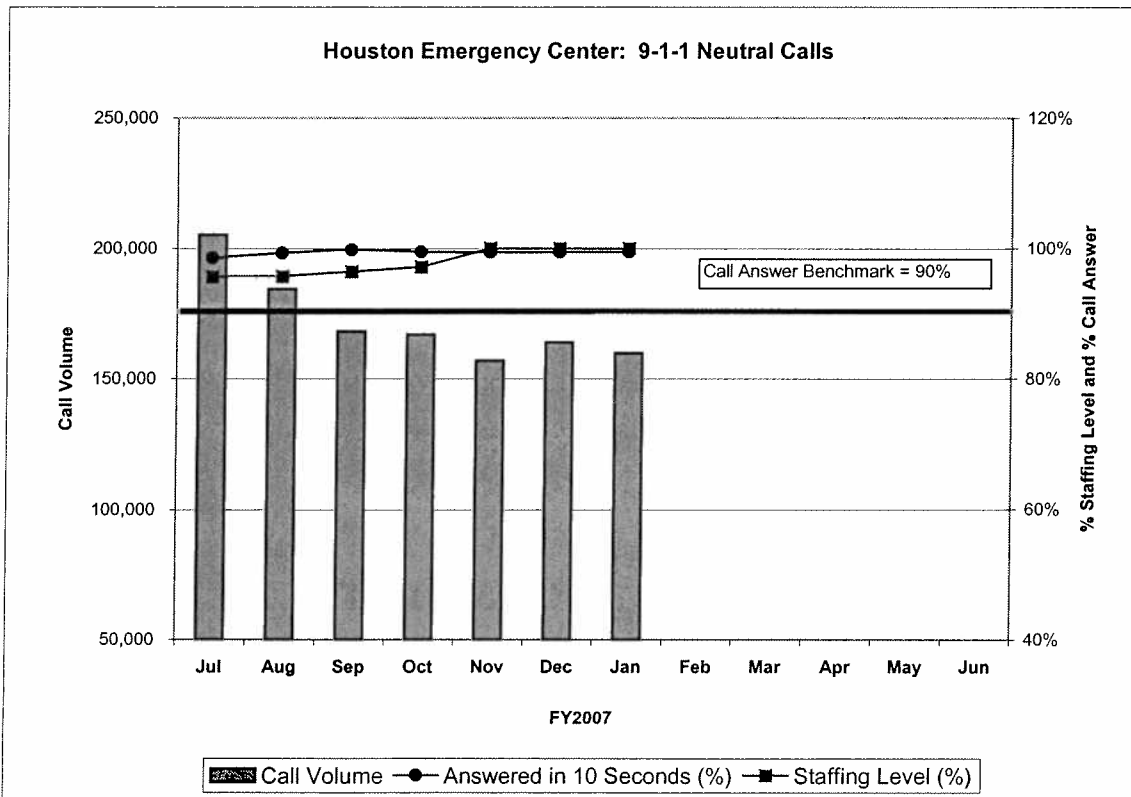
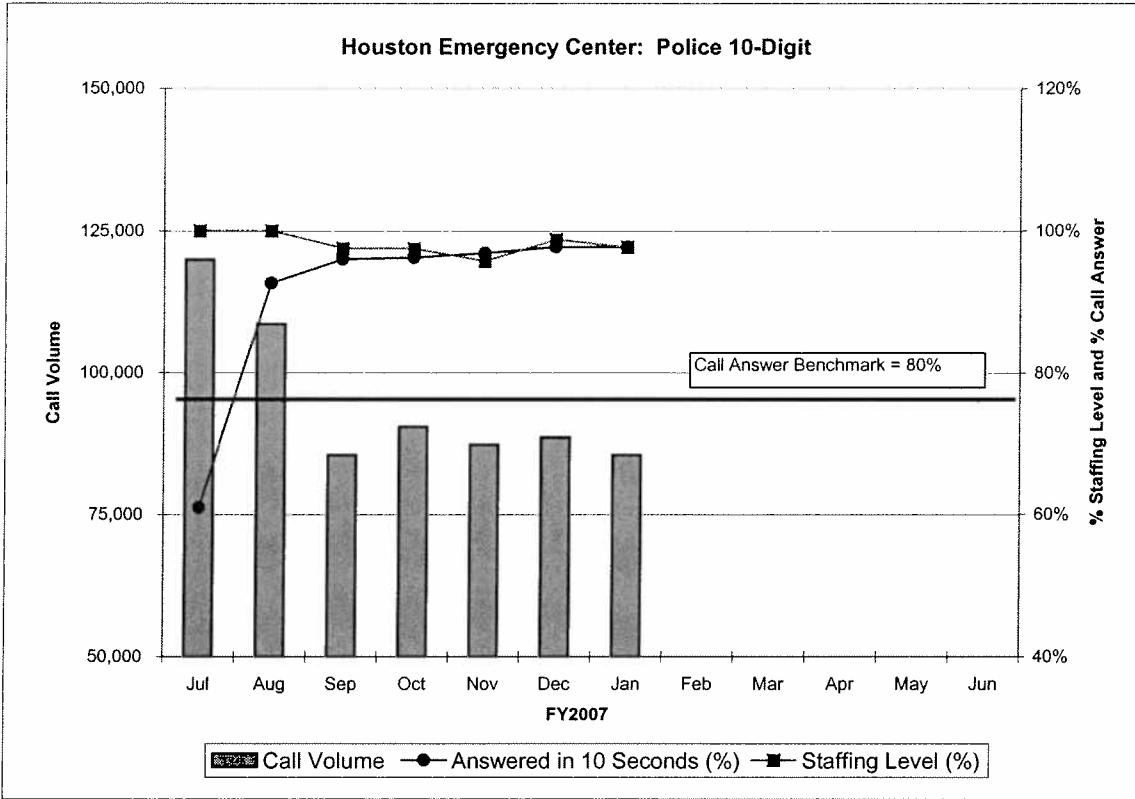
Retirees Receiving Health Benefits



TREND INDICATORS - HIRING AND RETIREMENTS

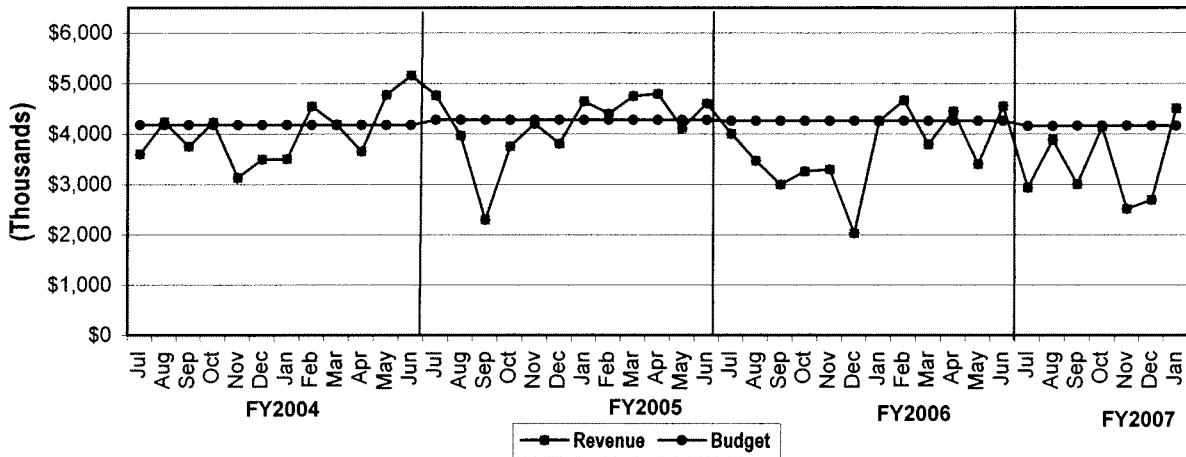


TREND INDICATORS - HOUSTON EMERGENCY CENTER

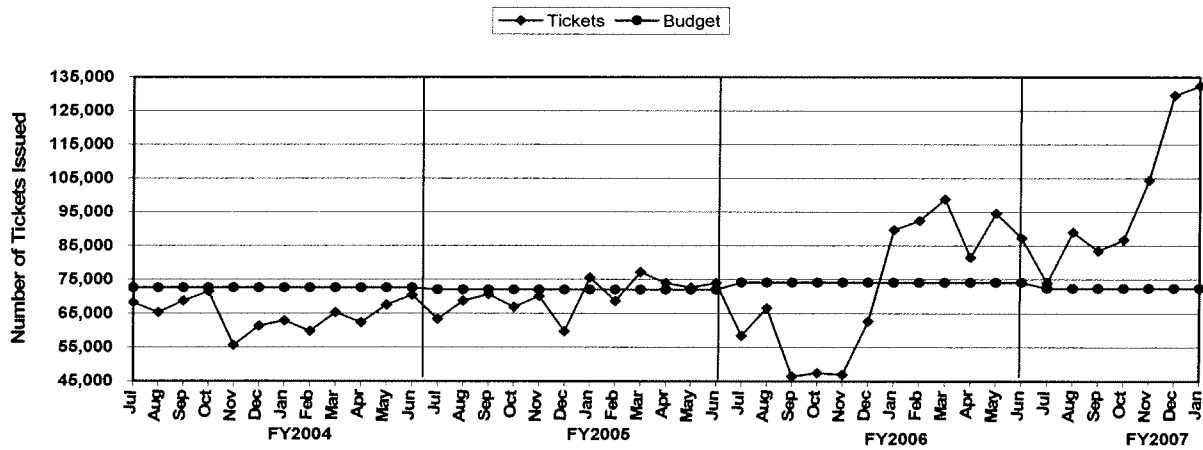


TREND INDICATORS - MUNICIPAL COURTS

Total Municipal Courts Revenue

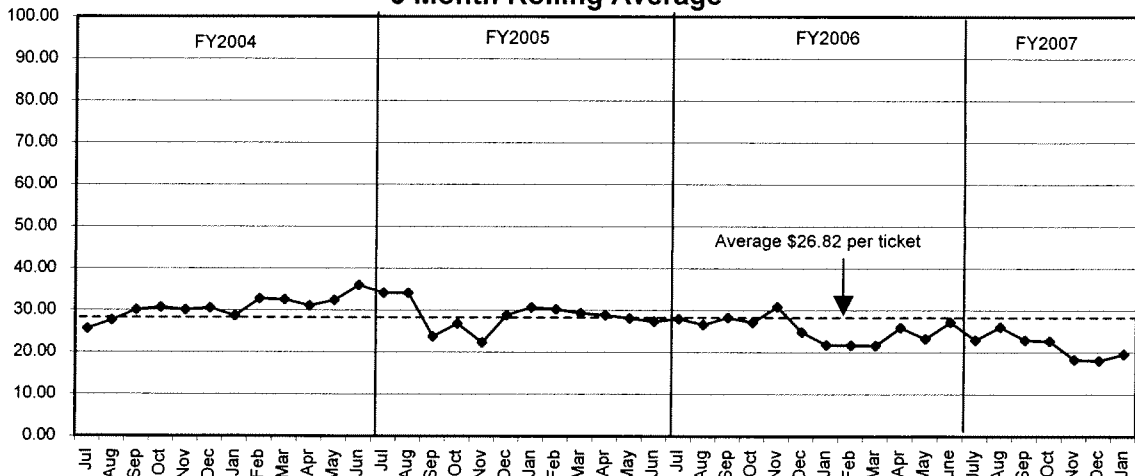


Number of Traffic Citations Issued

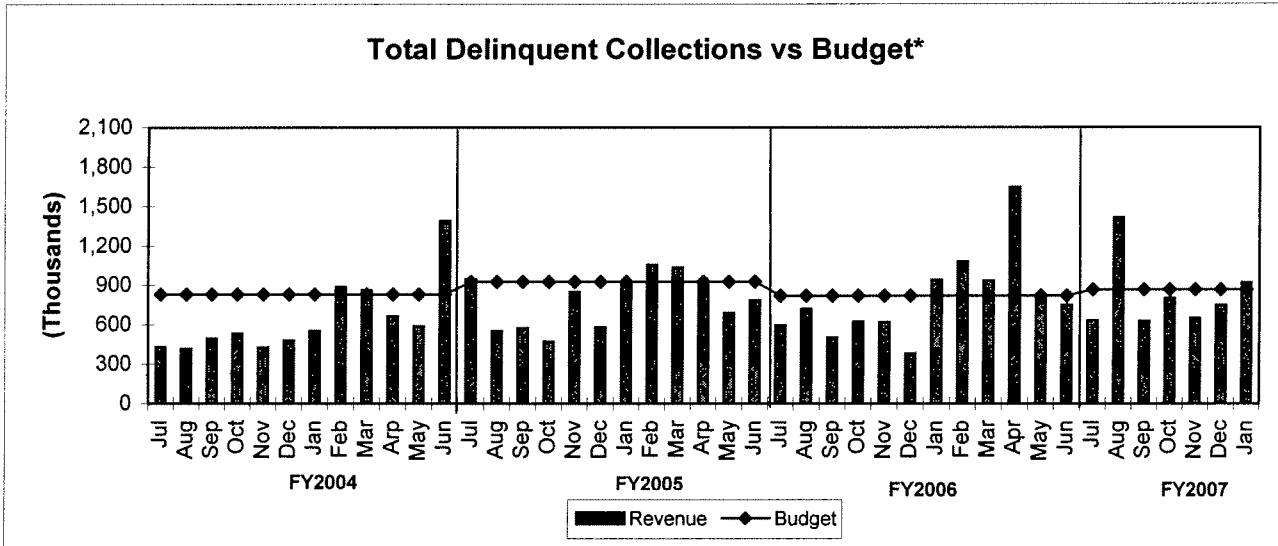
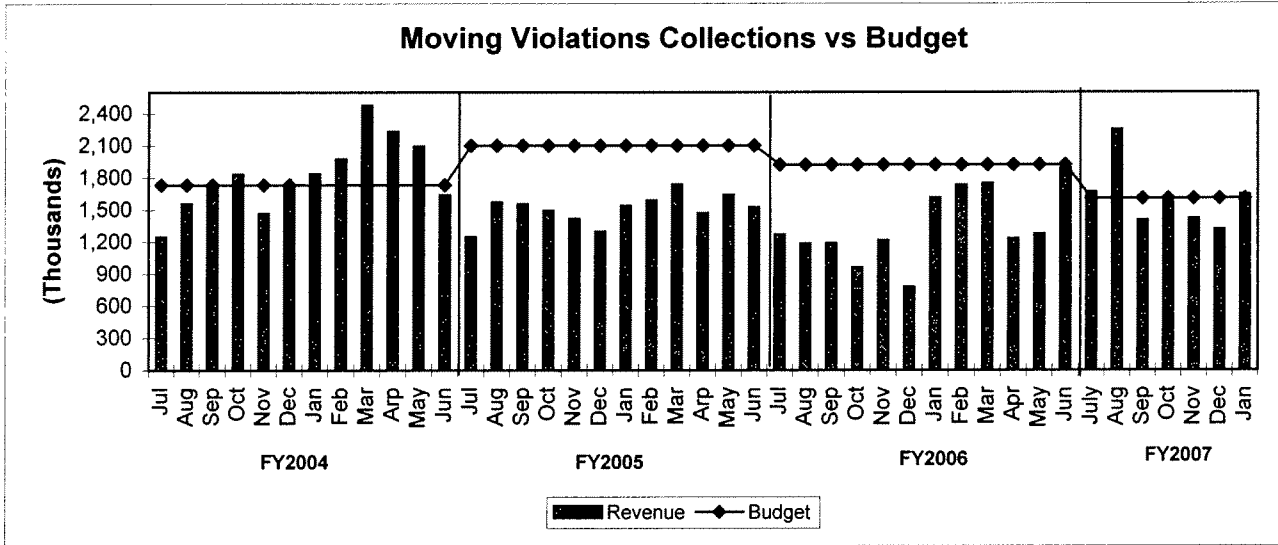


Note: Tickets issued primarily by the Houston Police Department.

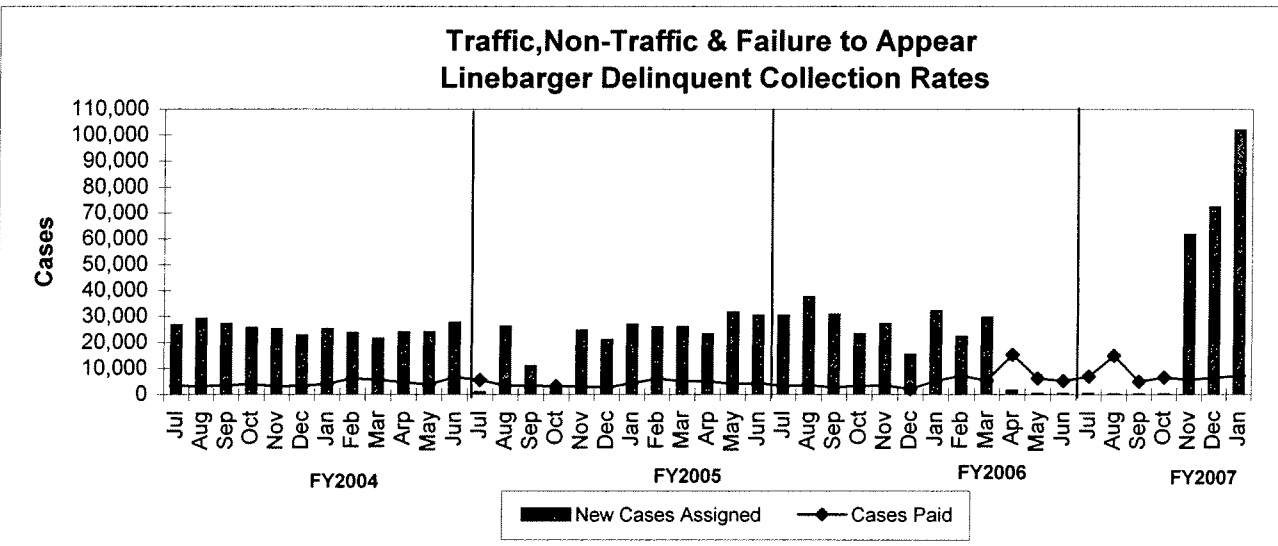
Moving Violations Revenue Per Ticket Issued (427010) 3 Month Rolling Average



TREND INDICATORS - MUNICIPAL COURTS



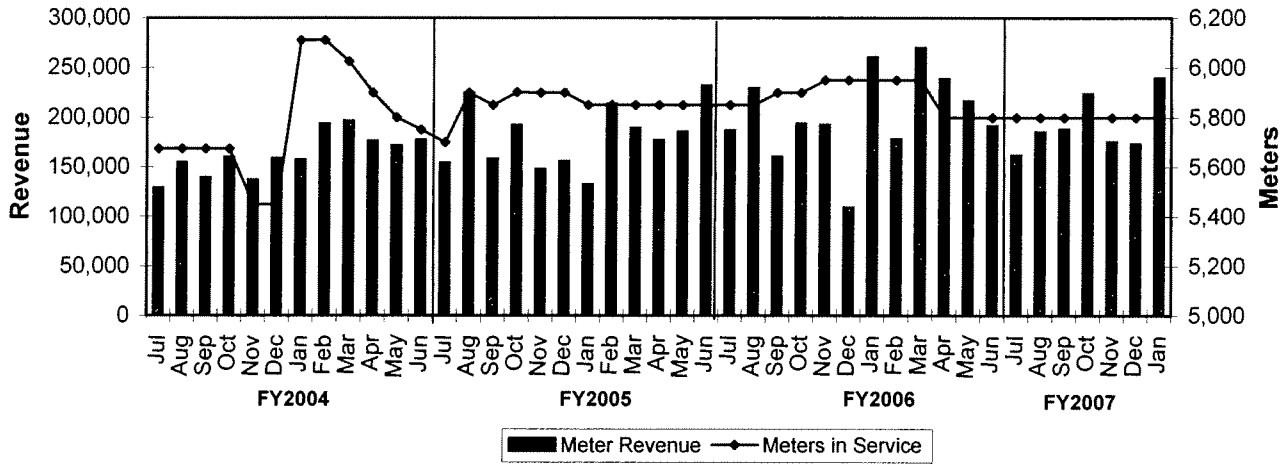
*Net of fees and expenses paid to Linebarger



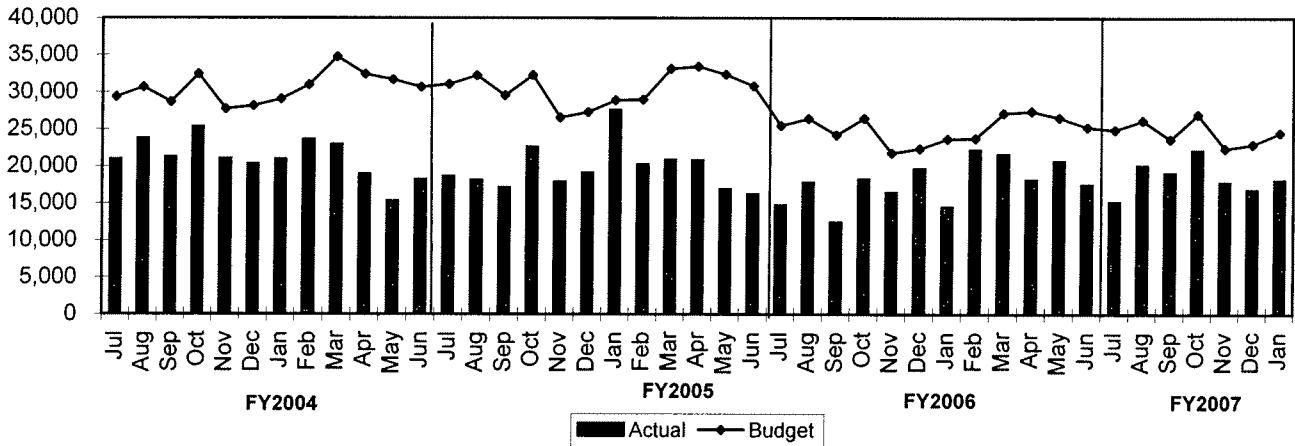
*Excludes Delinquent Parking Collections

TREND INDICATORS - MUNICIPAL COURTS

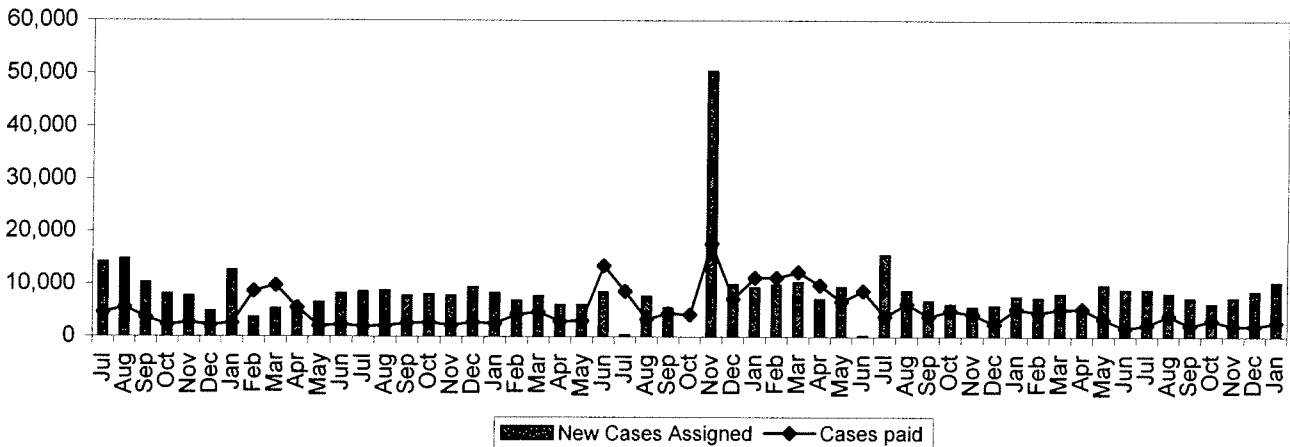
Meter Revenue vs # Meters in Service



Parking Violations vs Budget

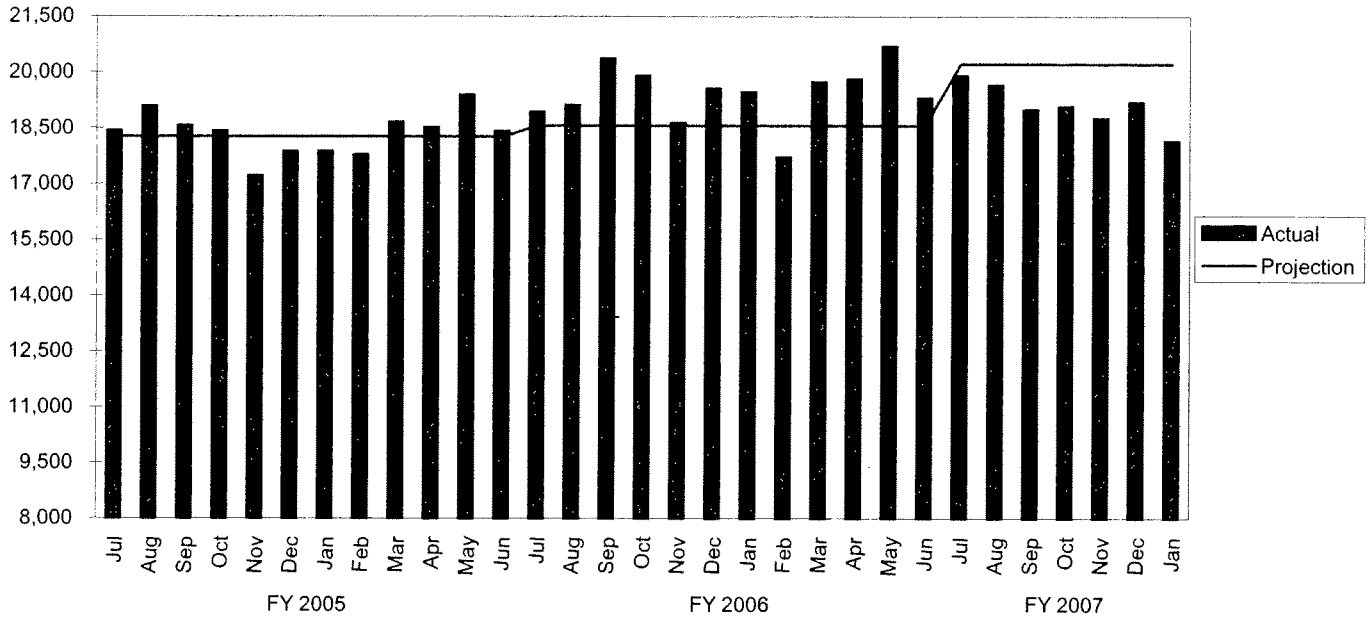


Parking Meter Violations Lineberger Delinquent Collections Rate

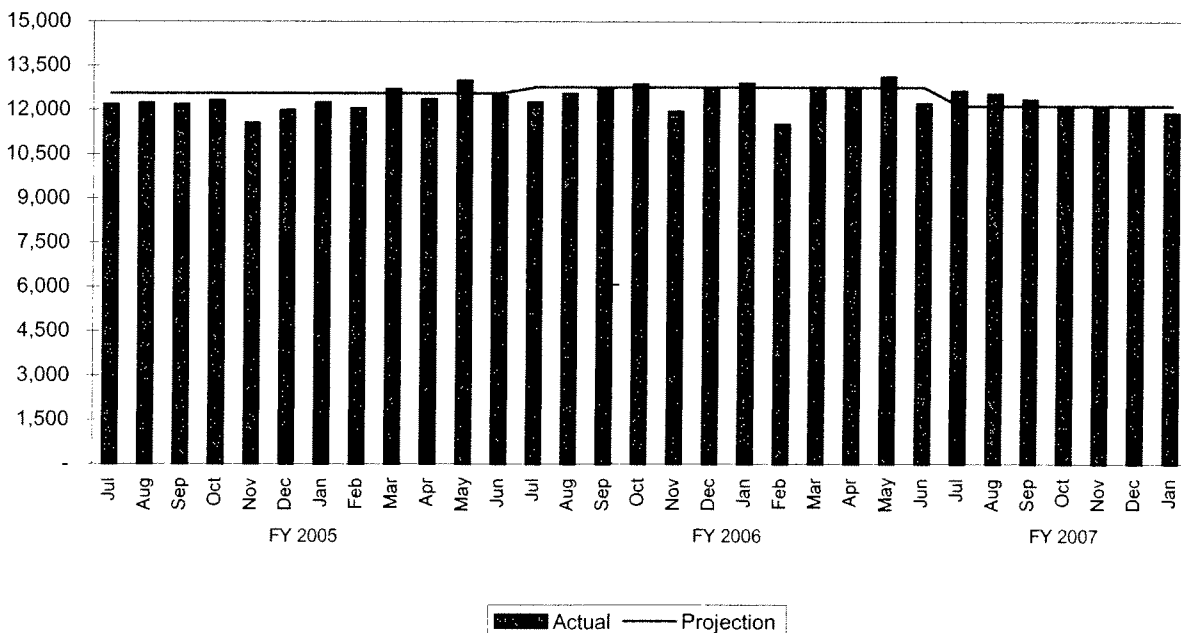


TREND INDICATORS - AMBULANCE SERVICES

EMS Incidents

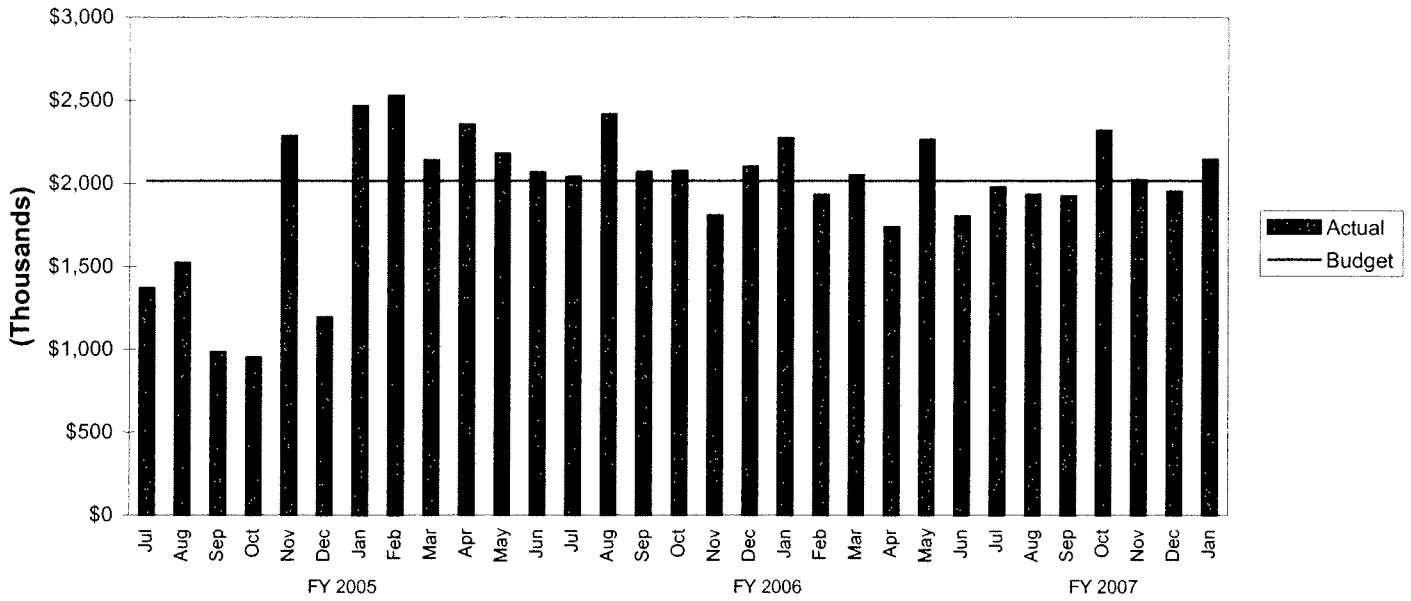


EMS Transports

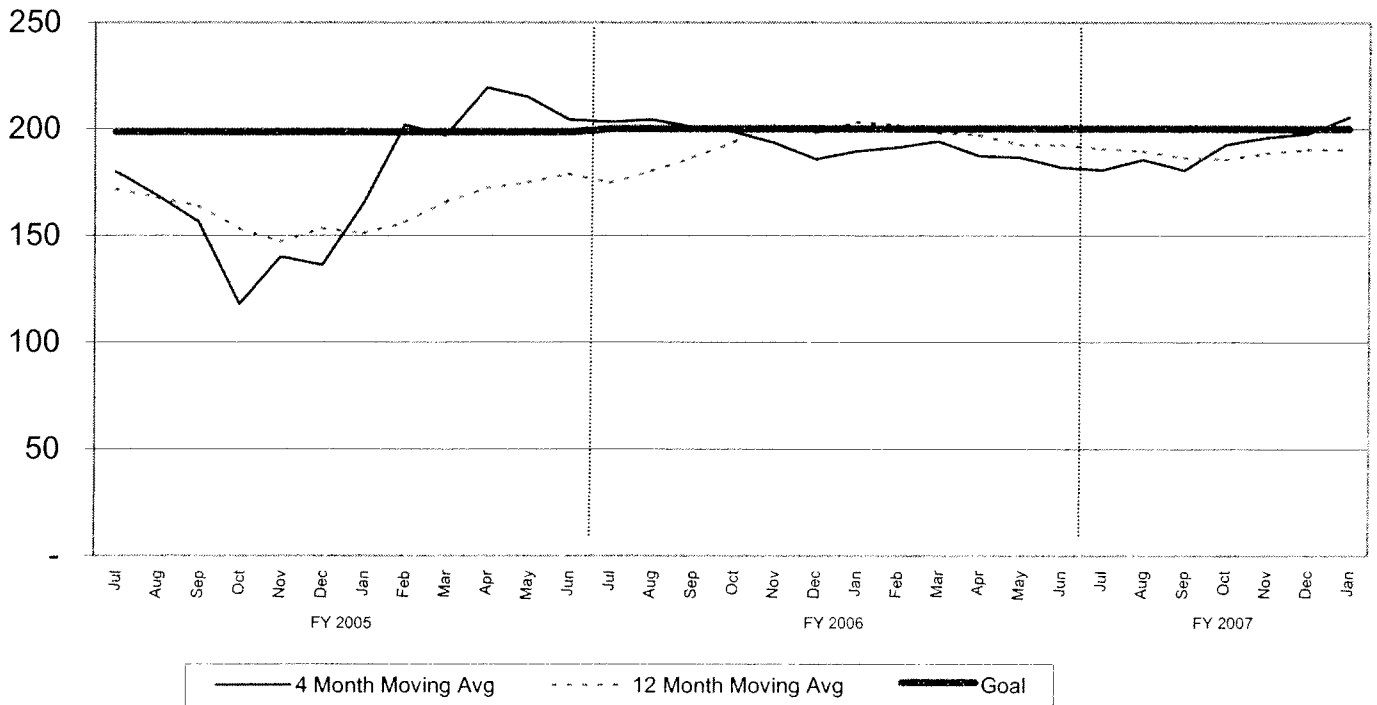


TREND INDICATORS - AMBULANCE SERVICES

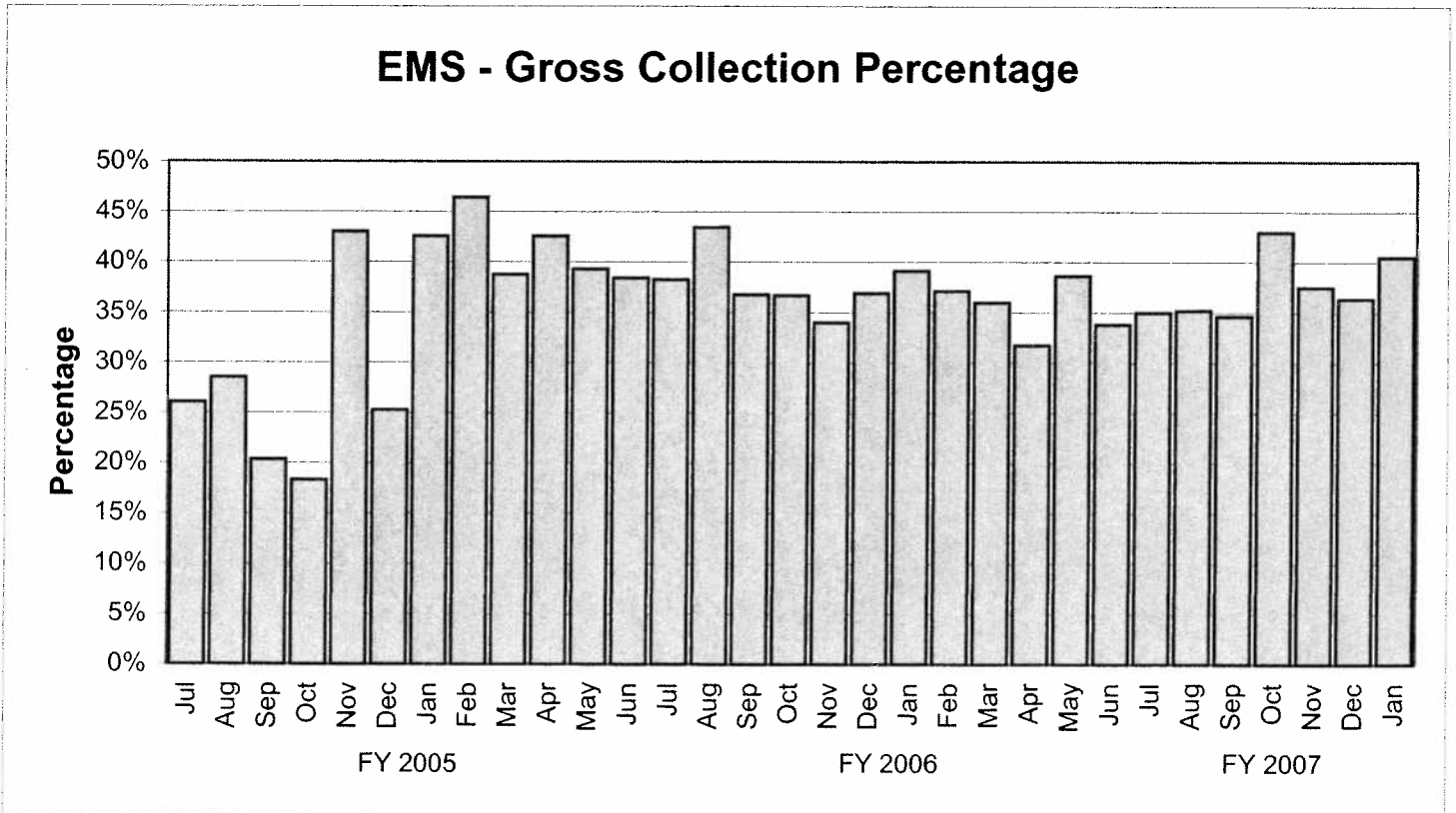
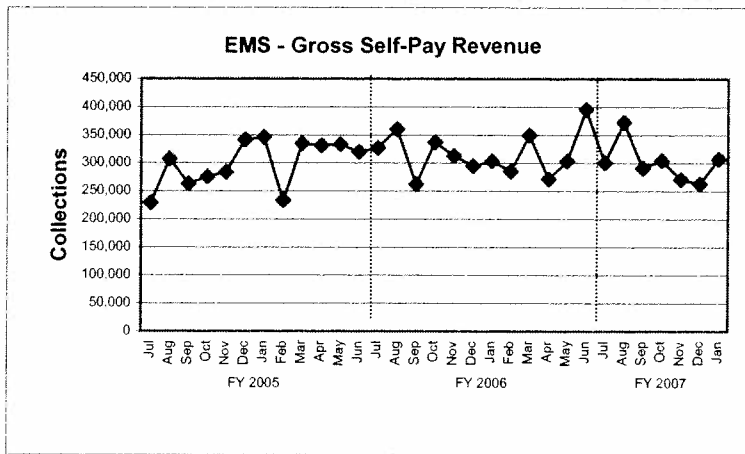
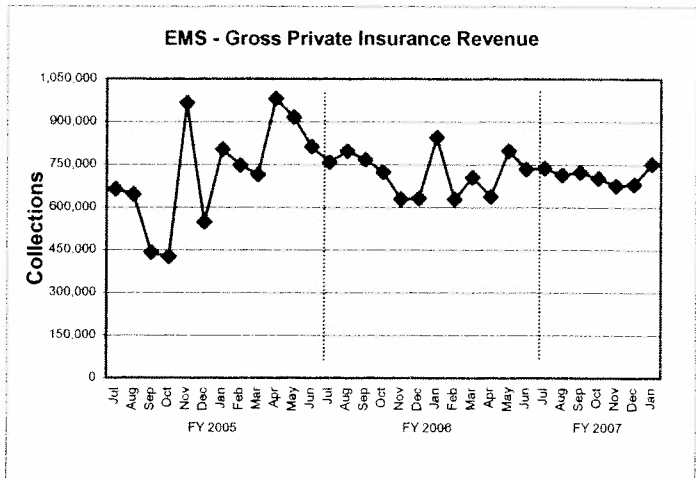
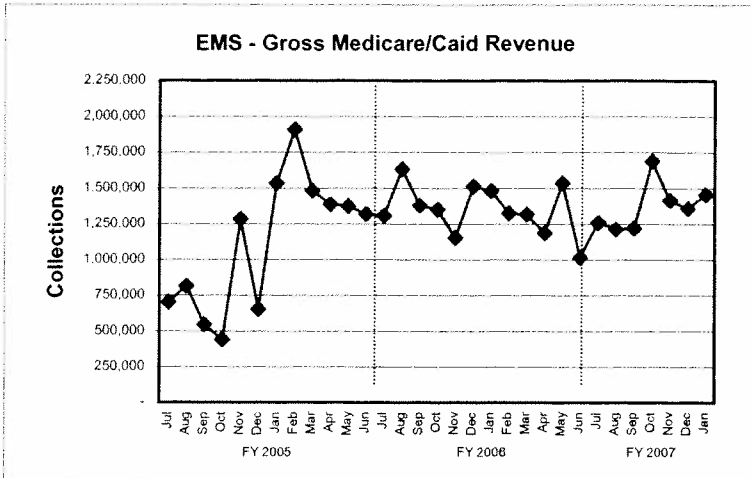
EMS Revenue (Net Collections)



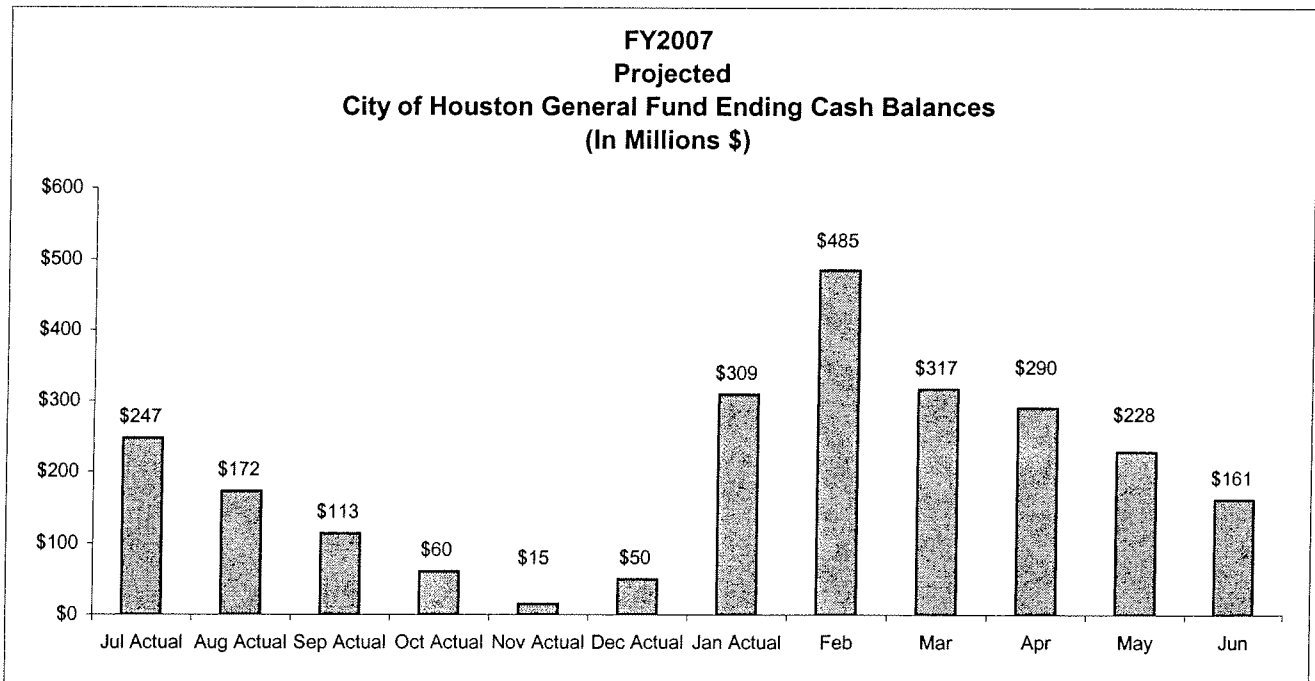
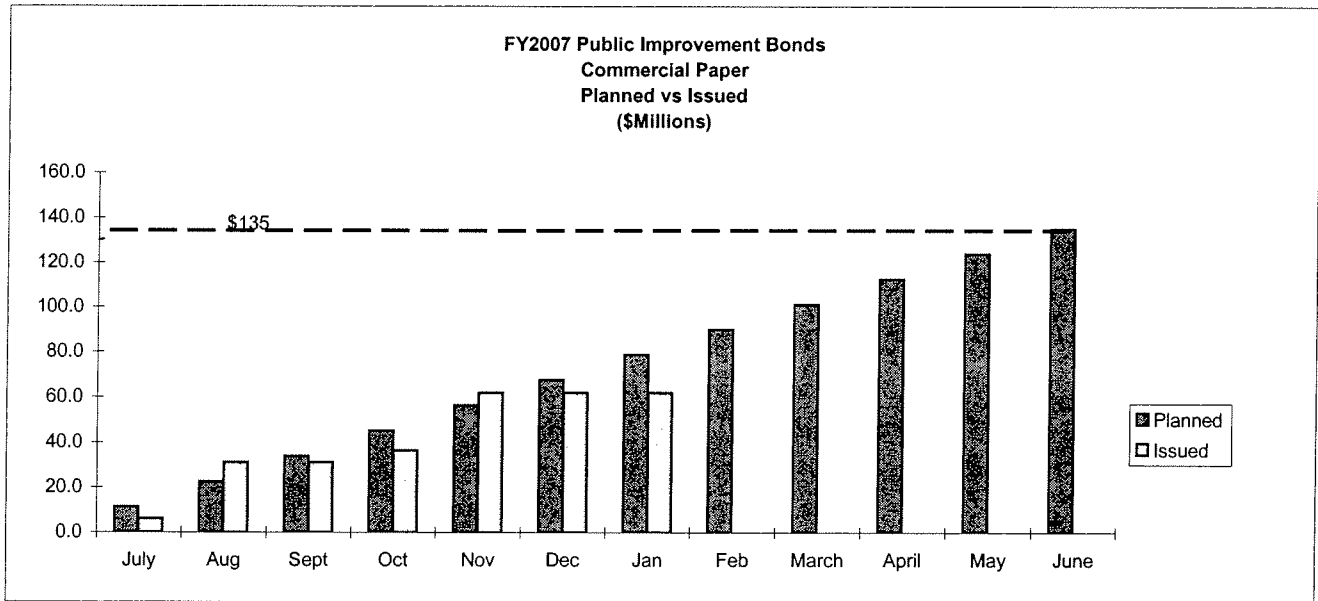
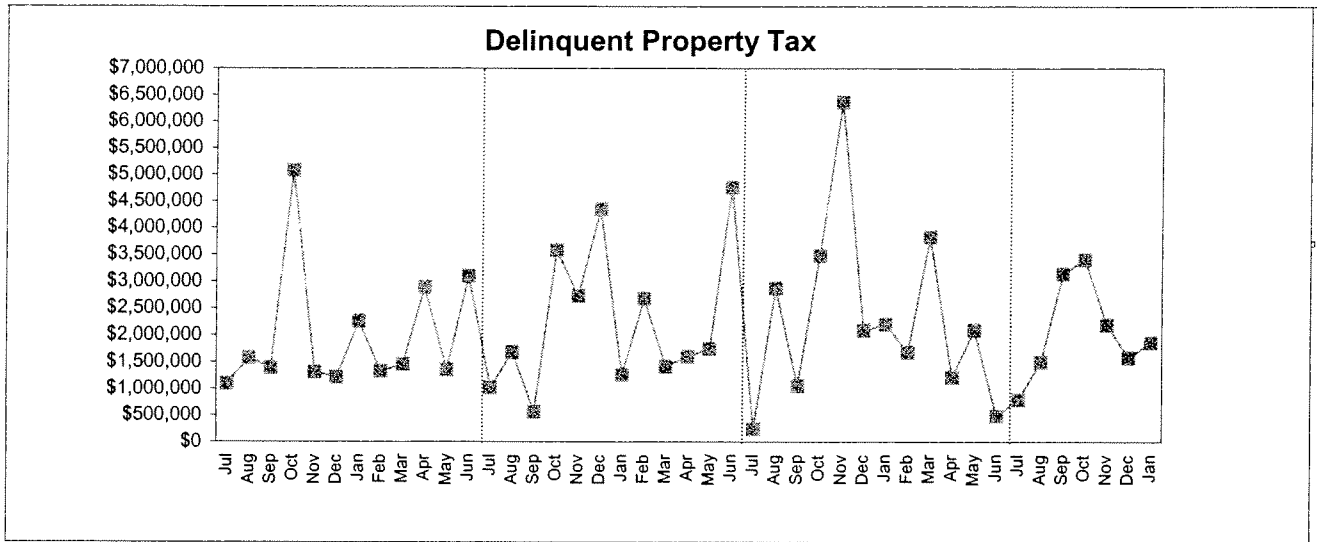
4 Month and 12 Month Moving Average EMS Revenue Per Transport



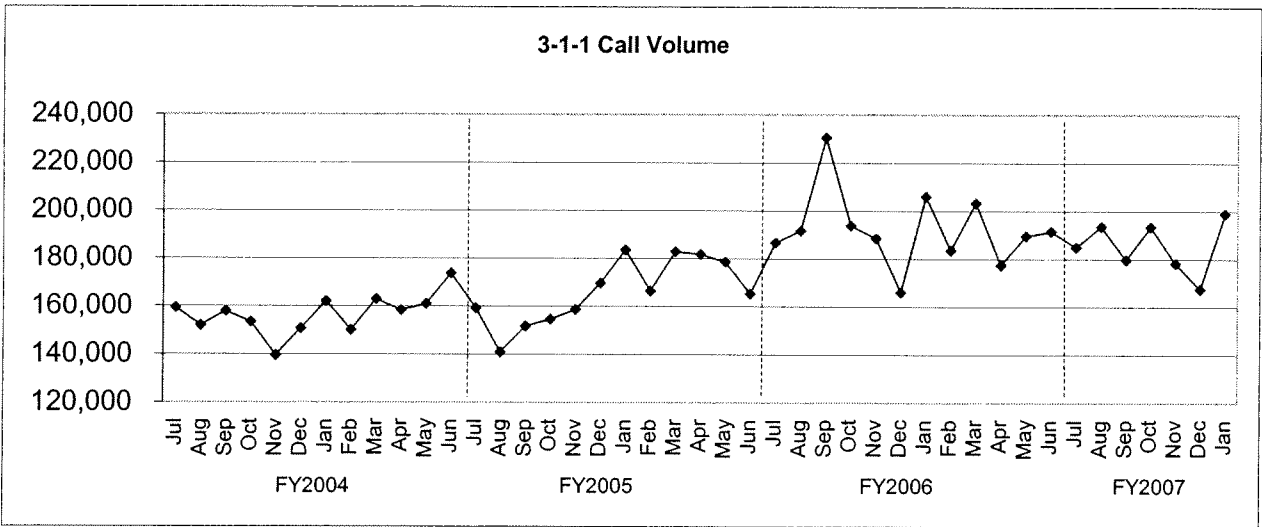
TREND INDICATORS - AMBULANCE SERVICES



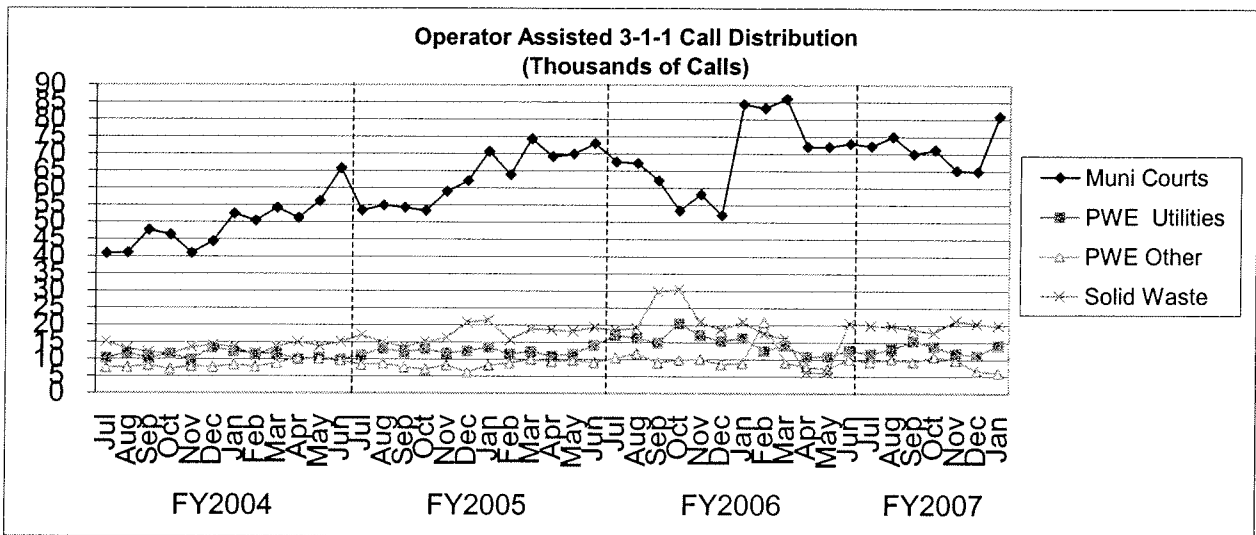
TREND INDICATORS - MISCELLANEOUS



TREND INDICATORS - MISCELLANEOUS



3-1-1 became fully operational in August 2001



4 largest users of operator assisted 3-1-1 calls.