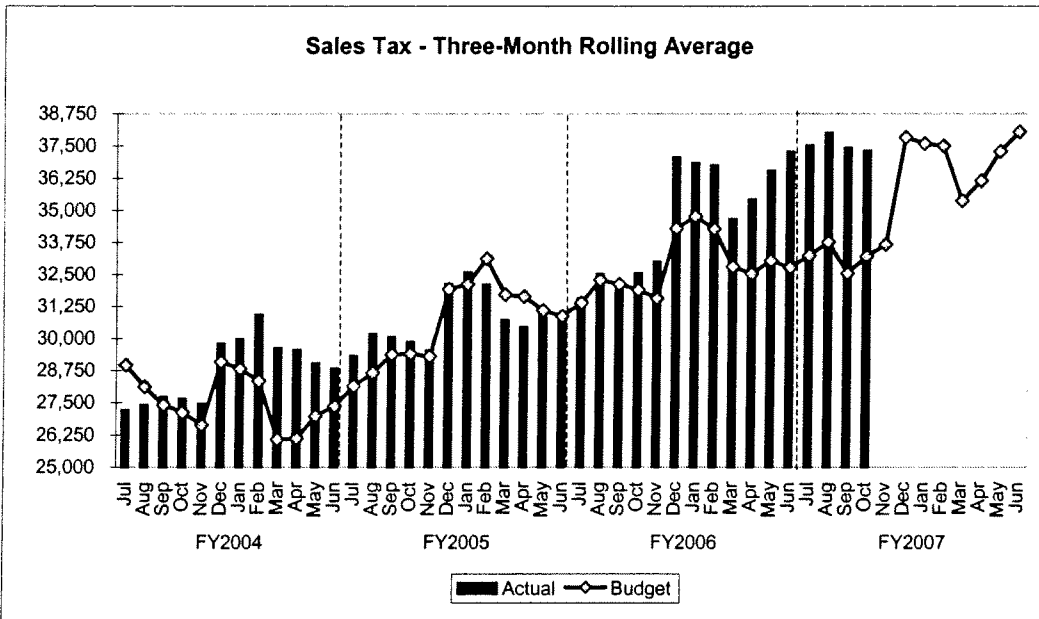
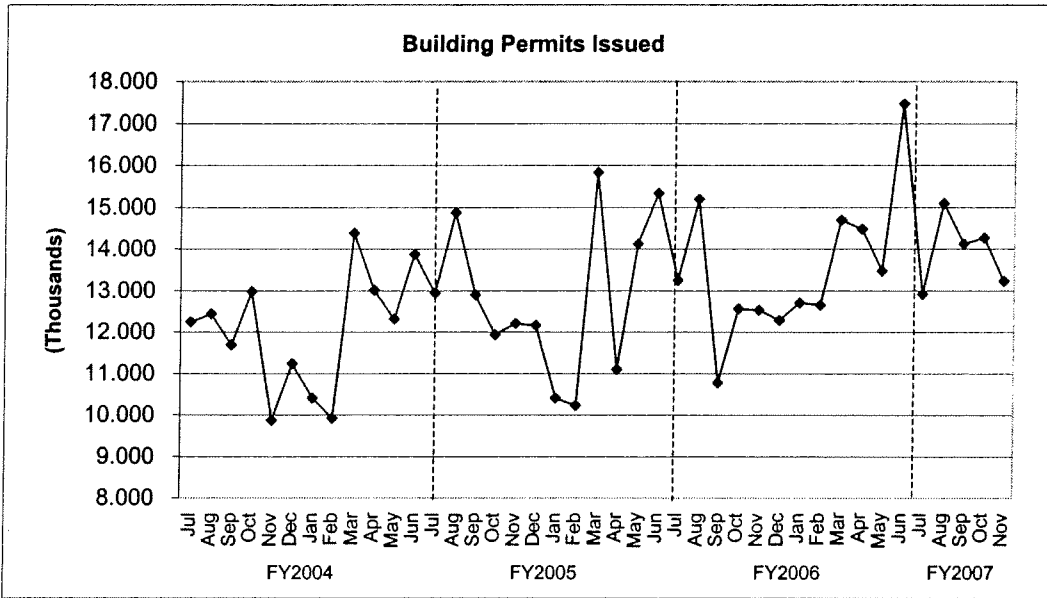


## TREND INDICATORS - LOCAL ECONOMY



Source: Office of State Comptroller

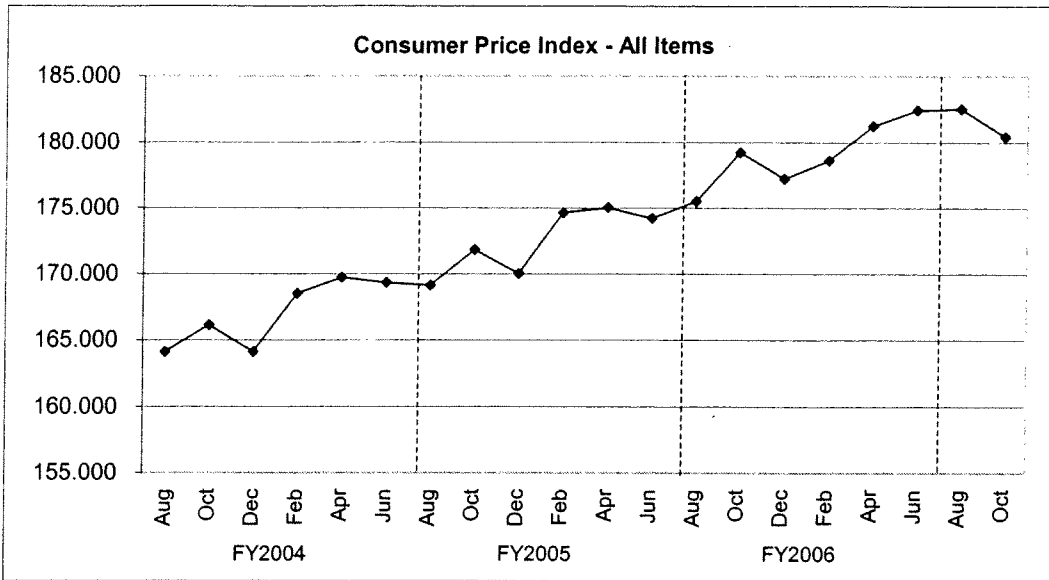


Source: City of Houston Planning and Development Department

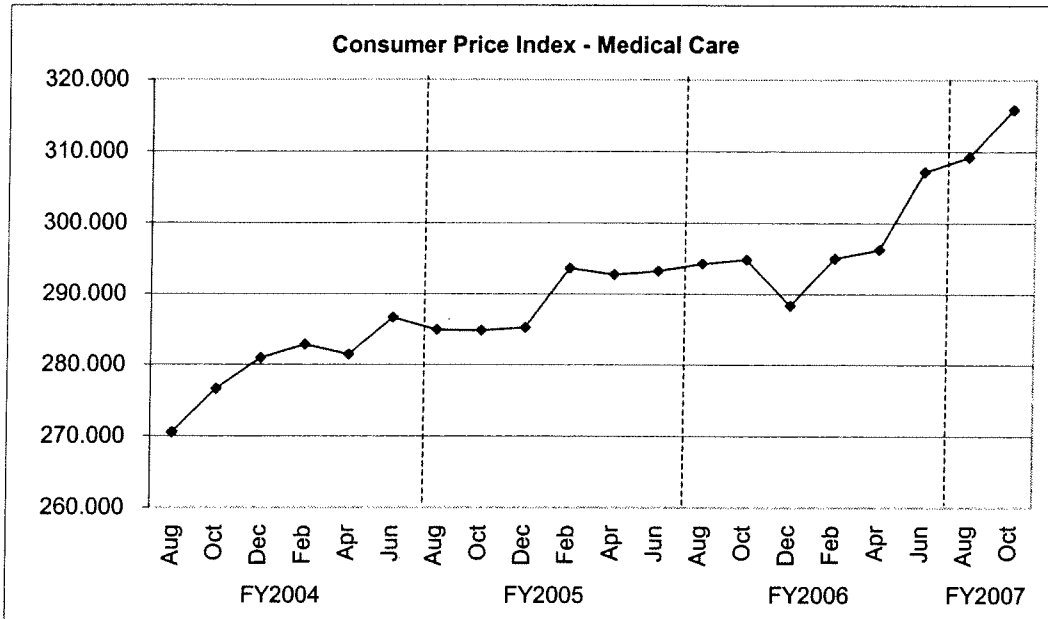


Source: Databook Houston; University of Houston Center for Public Policy; not seasonally adjusted

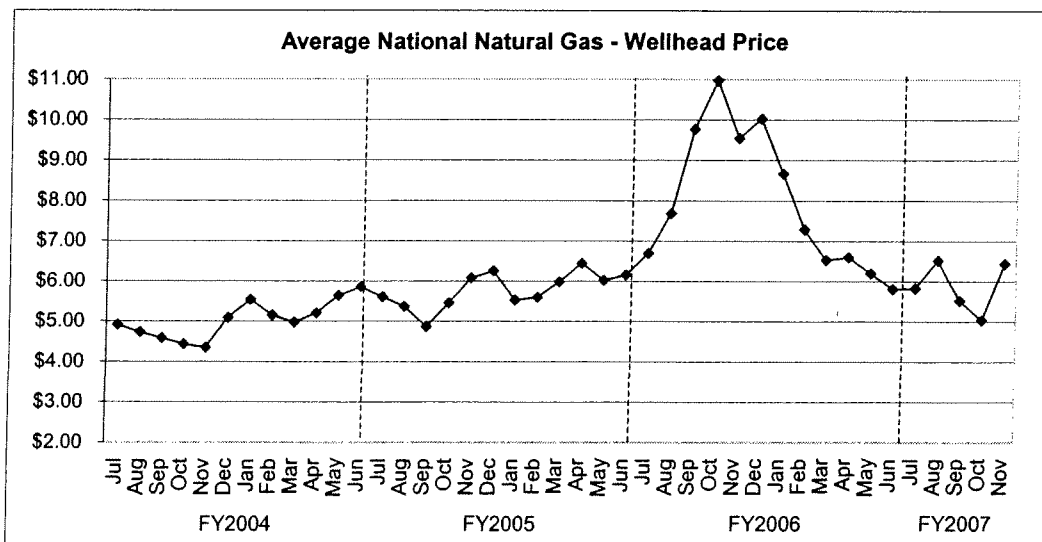
## TREND INDICATORS - LOCAL ECONOMY



Source: Bureau of Labor Statistics - Houston, Galveston, Brazoria TX

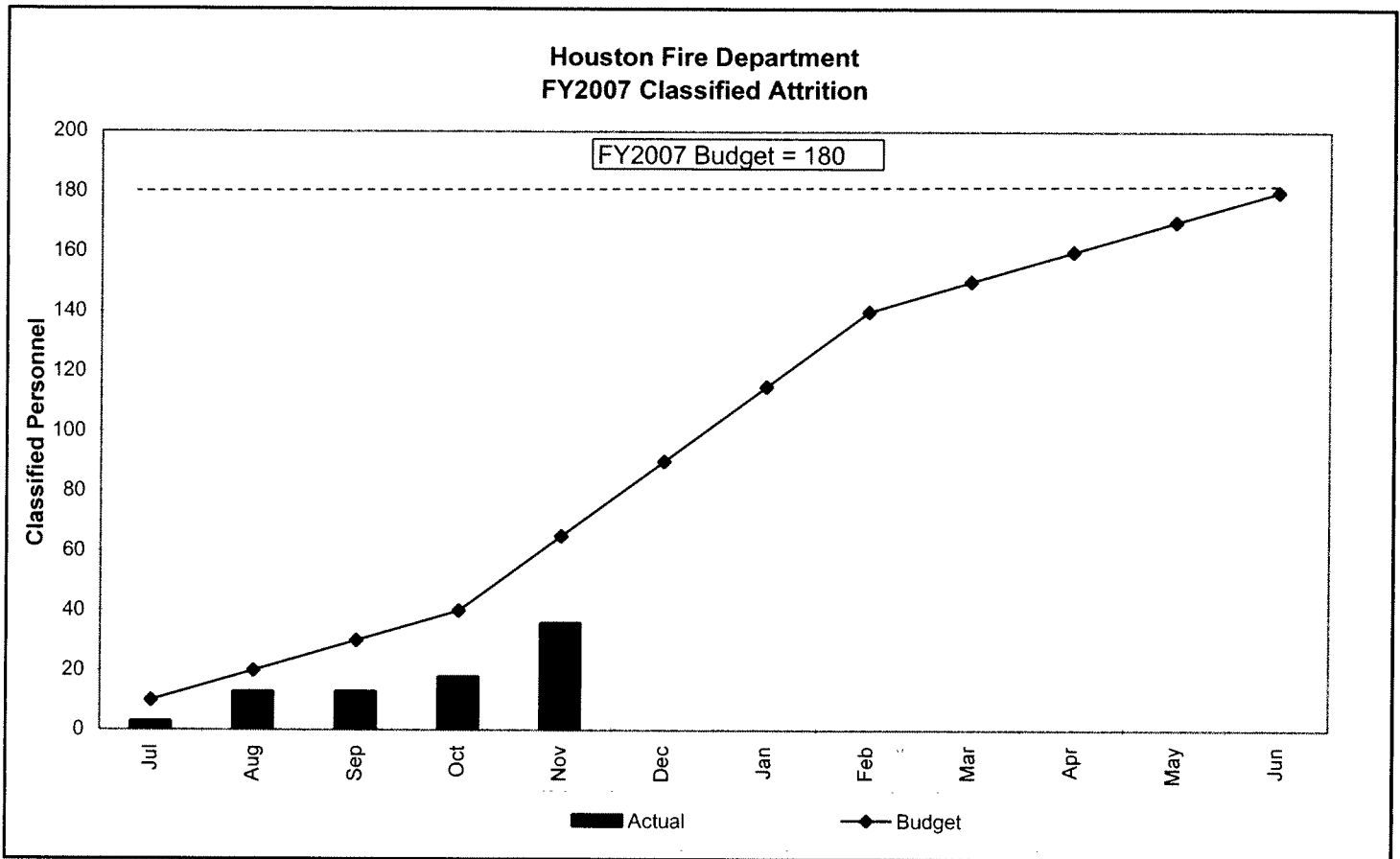


Source: Bureau of Labor Statistics - Houston, Galveston, Brazoria TX

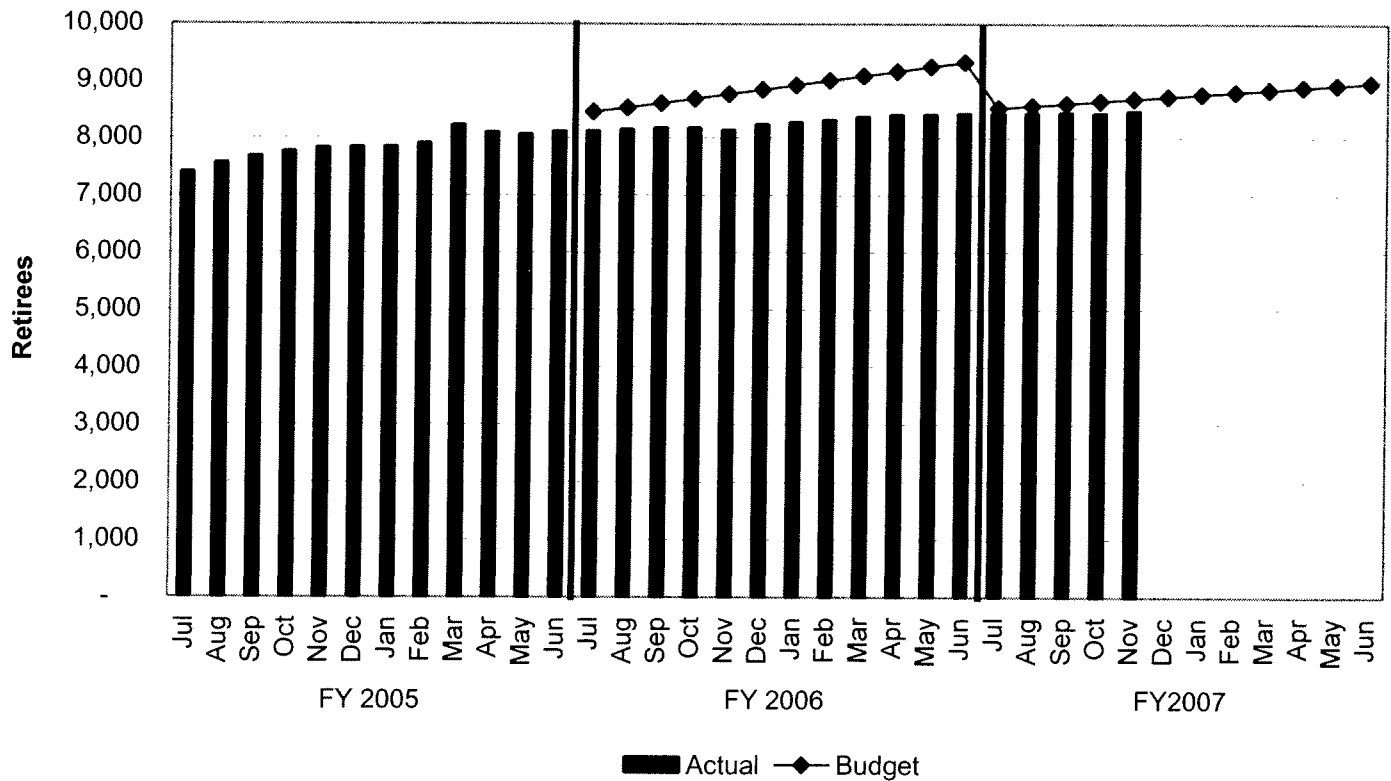


Source: Energy Information Administration/Natural Gas Monthly

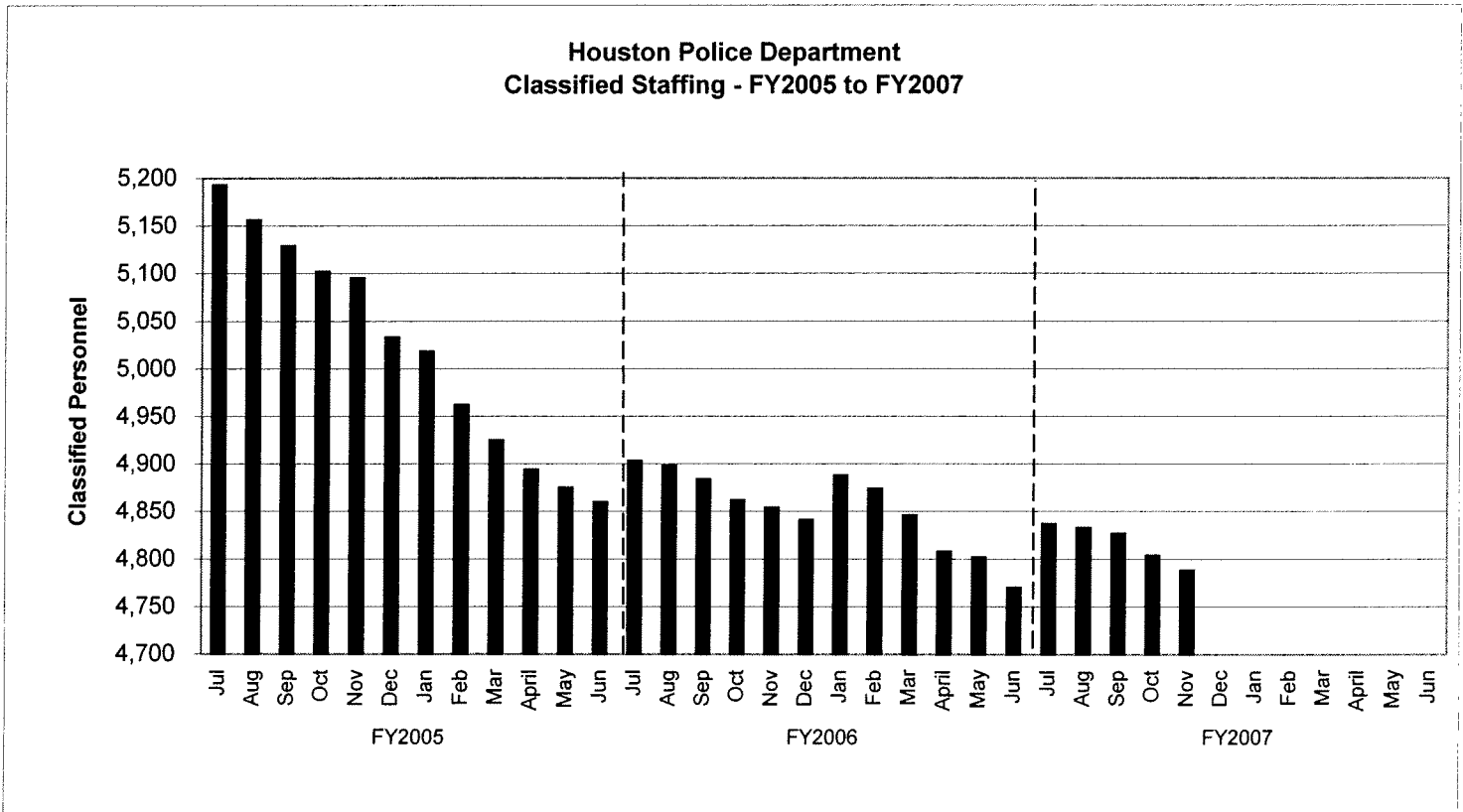
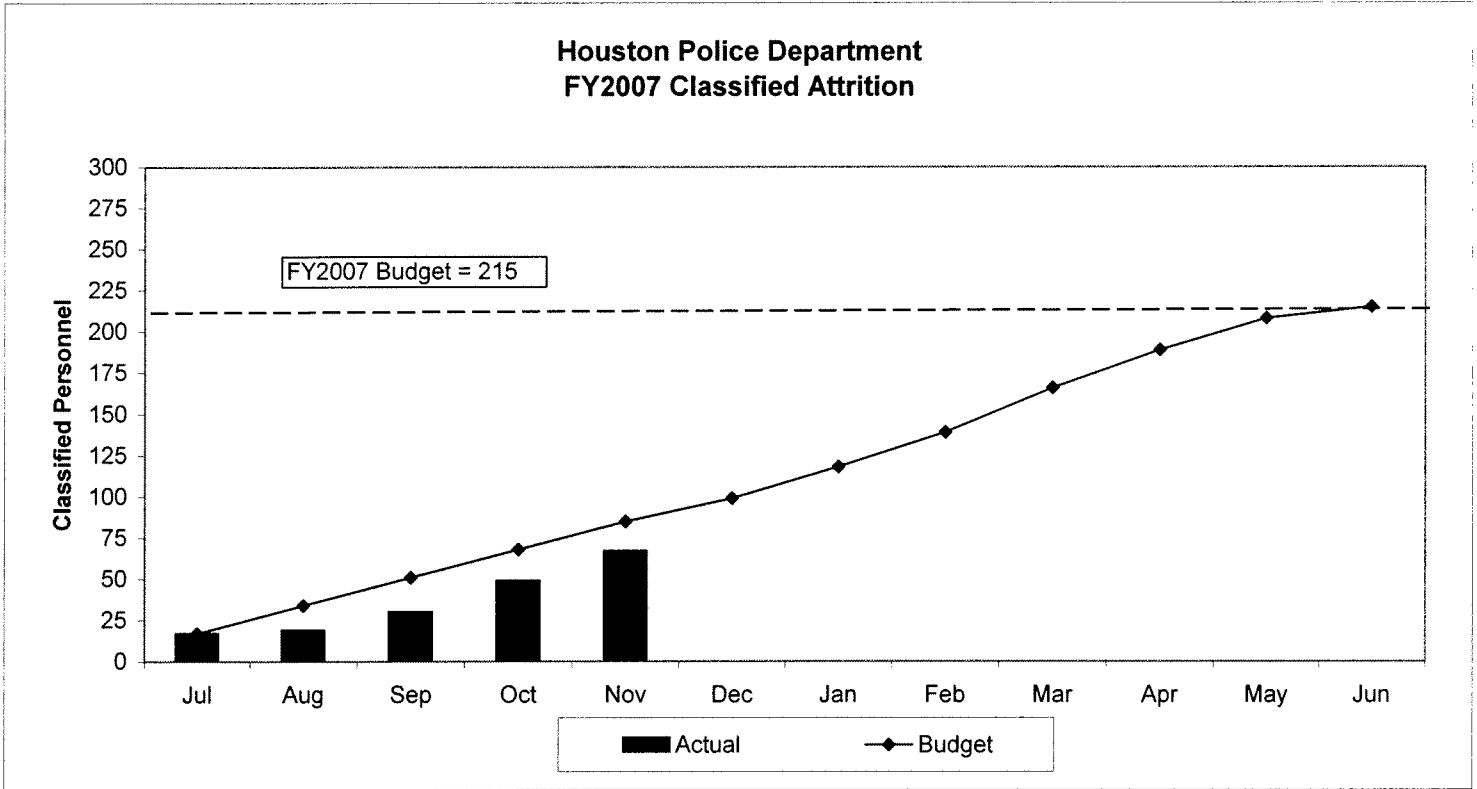
## TREND INDICATORS - RETIREMENTS



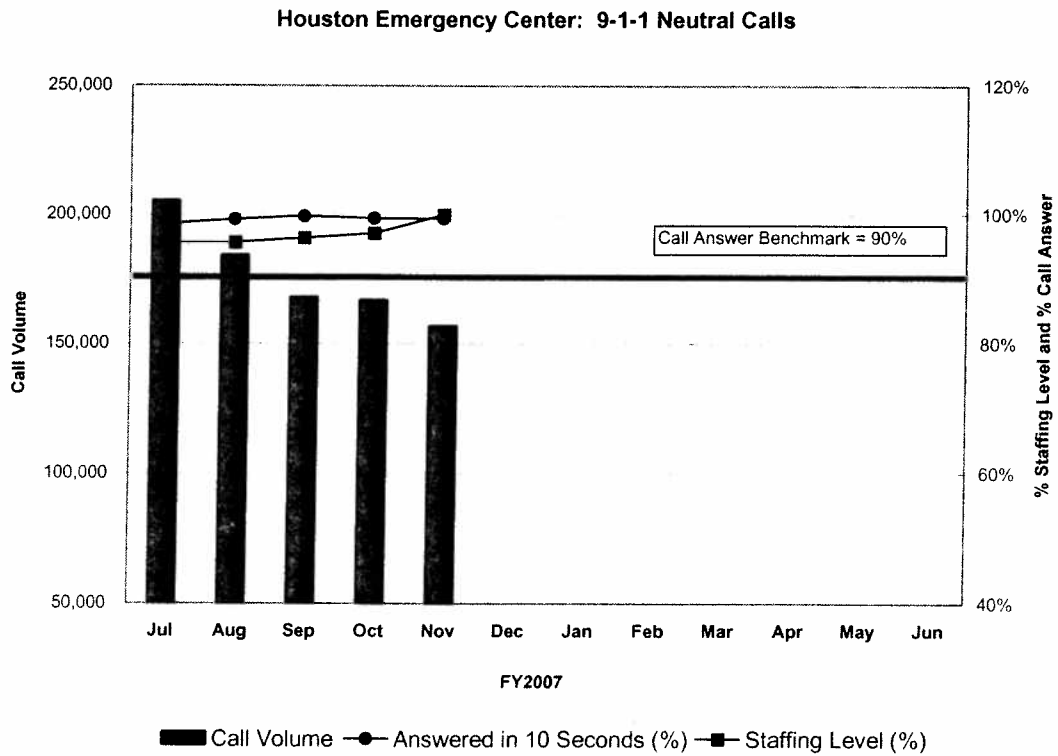
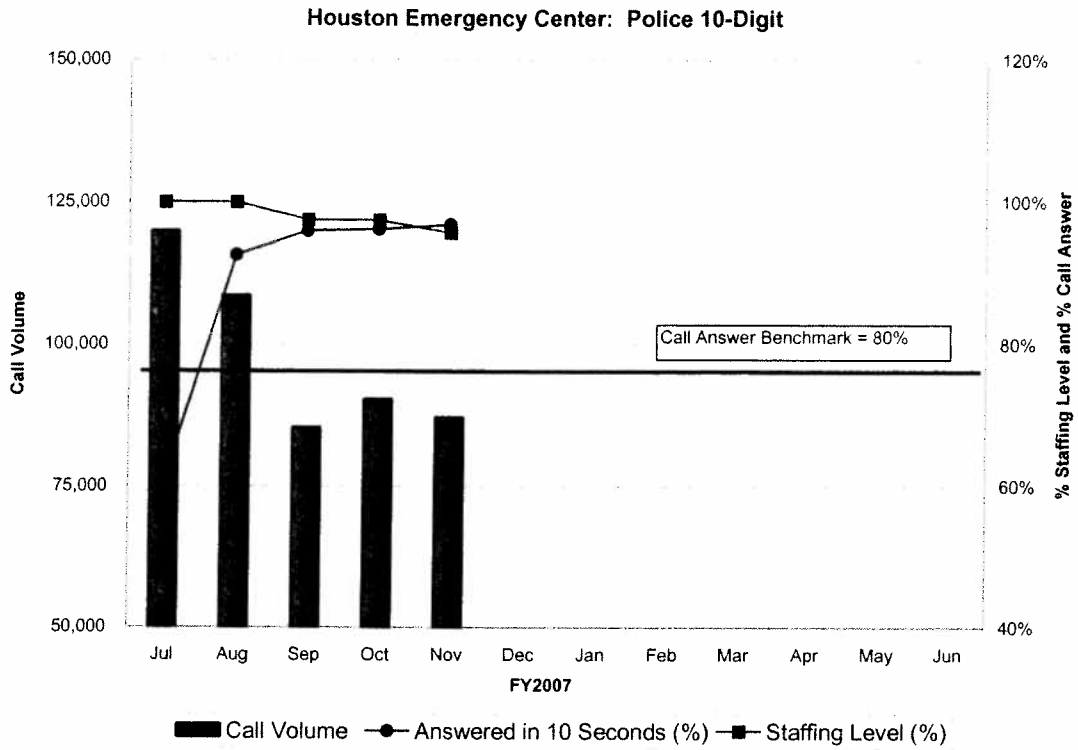
### Retirees Receiving Health Benefits



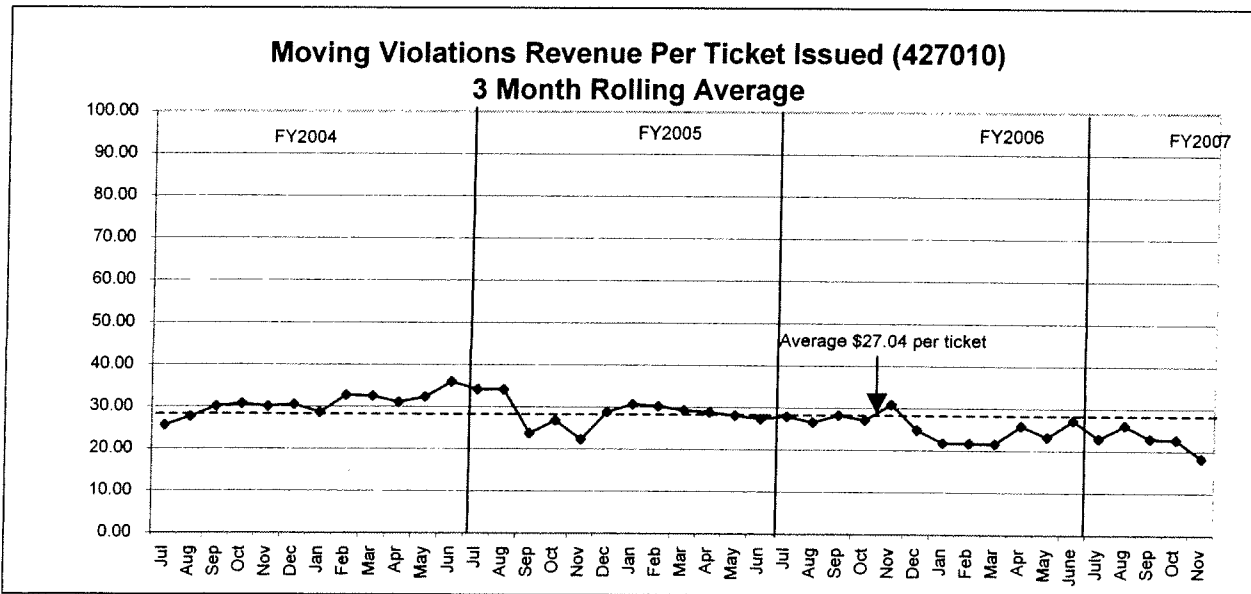
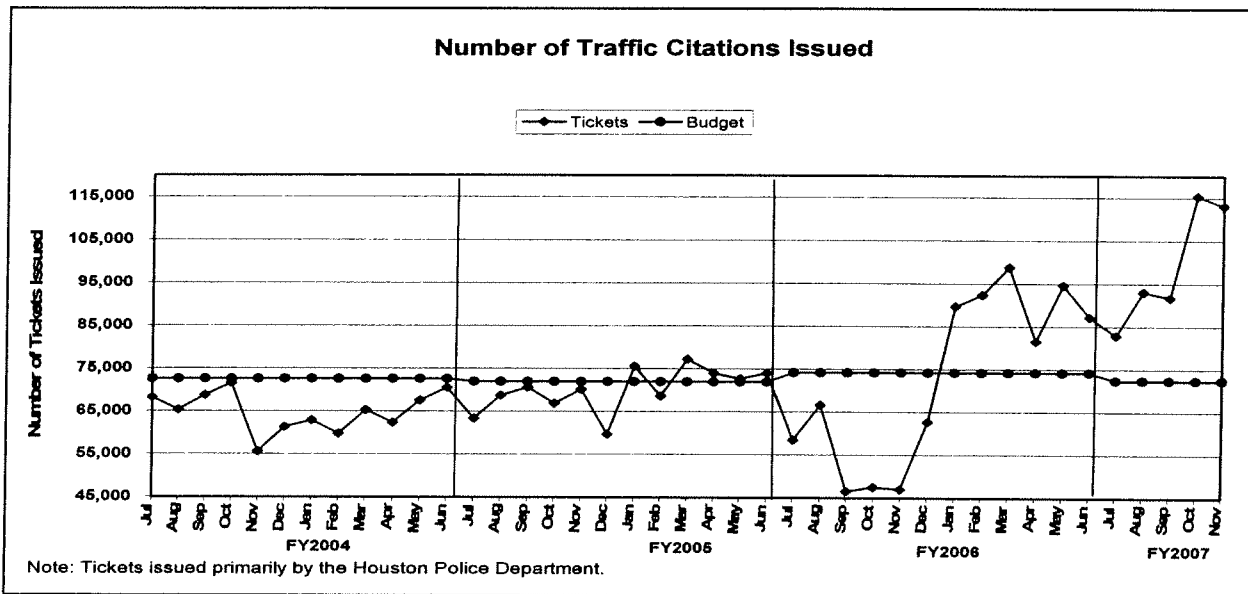
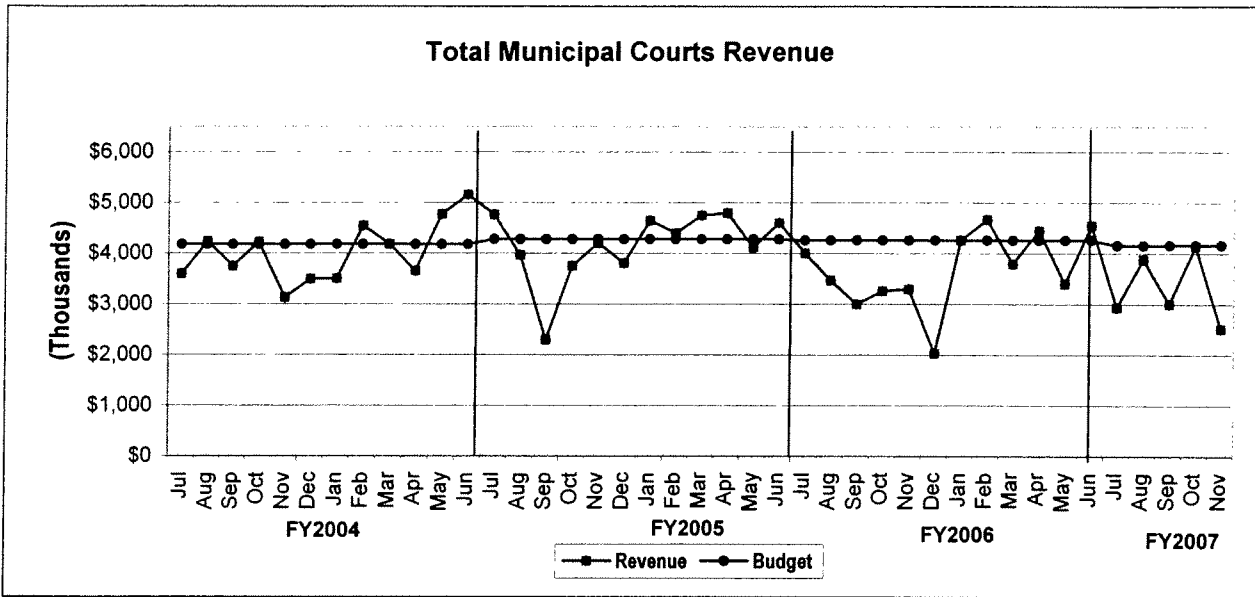
## TREND INDICATORS - HIRING AND RETIREMENTS



# TREND INDICATORS - HOUSTON EMERGENCY CENTER

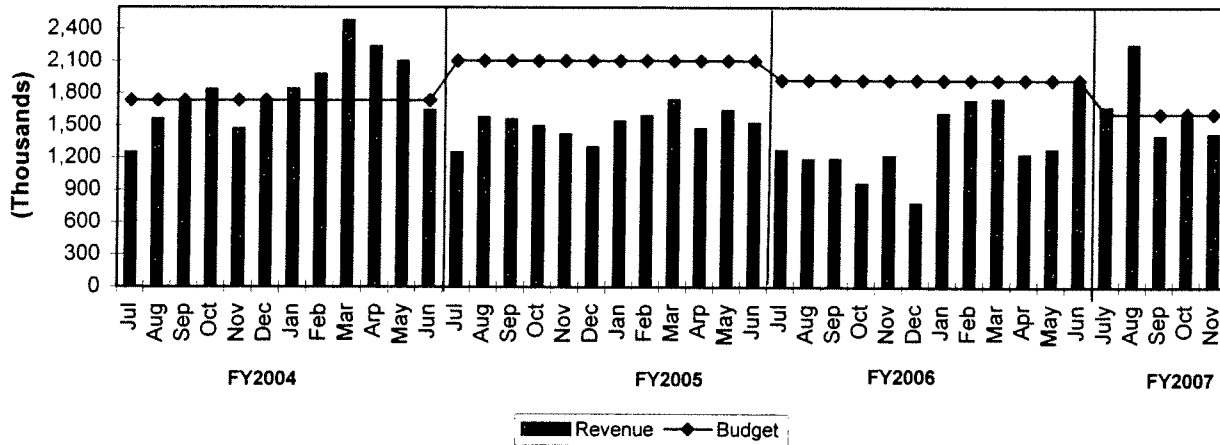


# TREND INDICATORS - MUNICIPAL COURTS

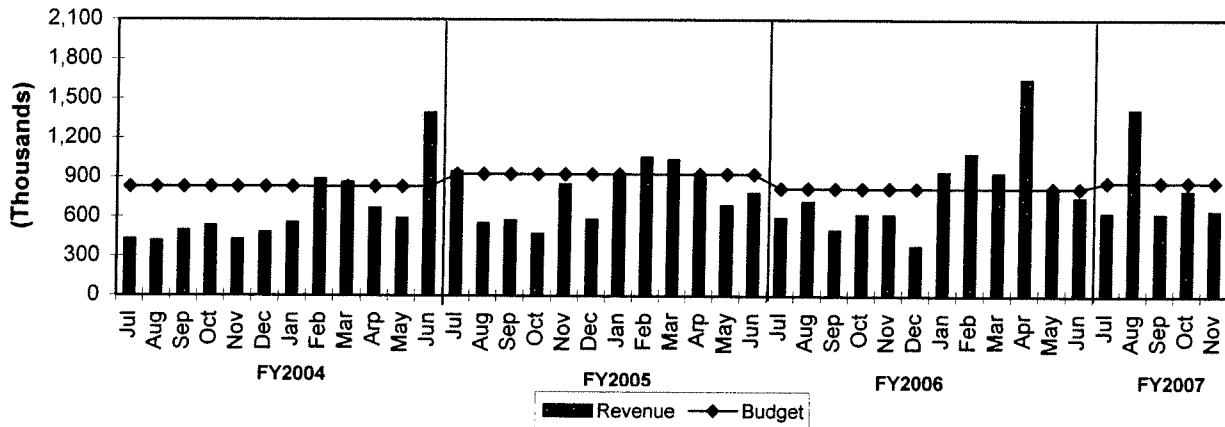


# TREND INDICATORS - MUNICIPAL COURTS

## Moving Violations Collections vs Budget

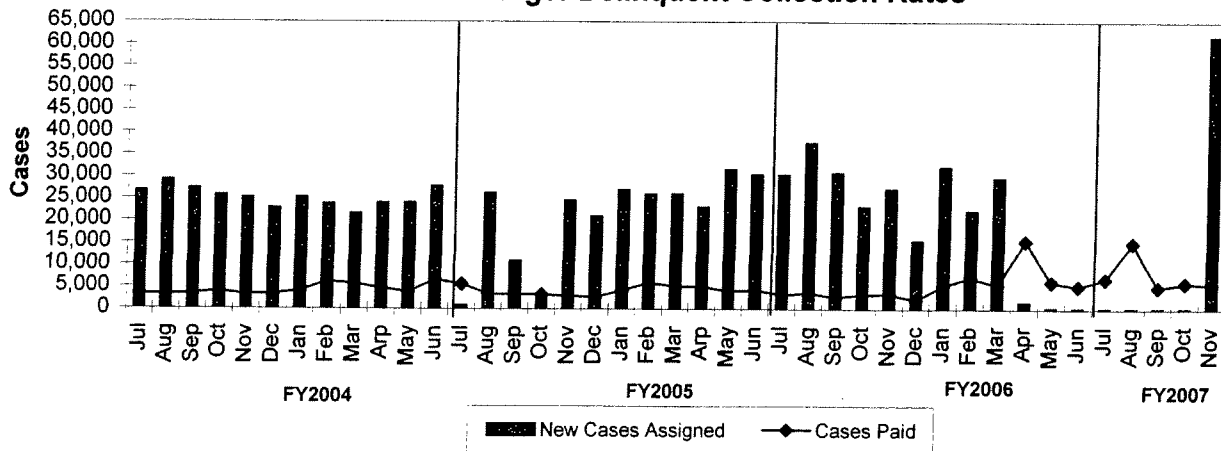


## Total Delinquent Collections vs Budget\*



\*Net of fees and expenses paid to Linebarger

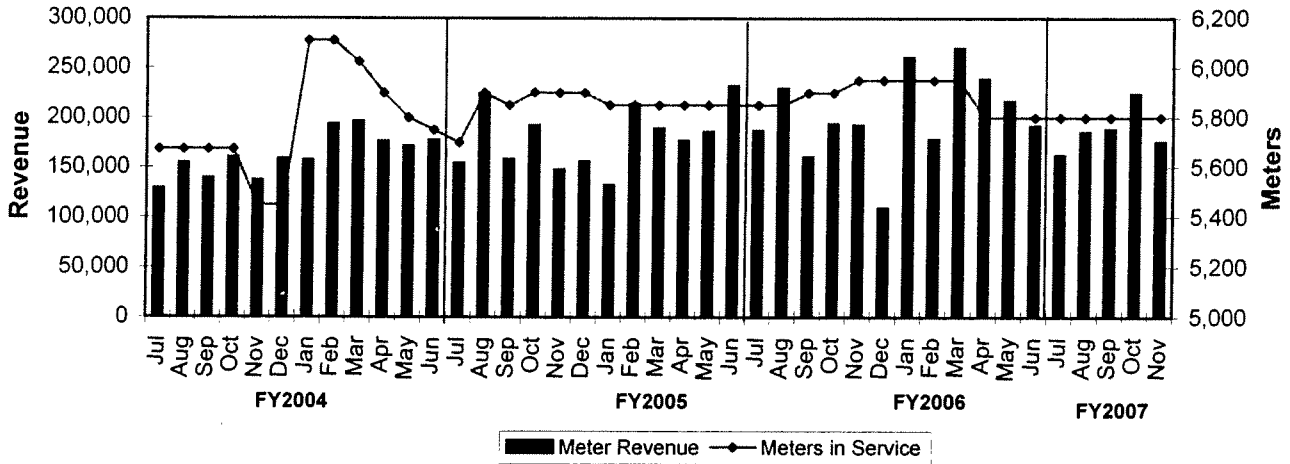
## Traffic, Non-Traffic & Failure to Appear Linebarger Delinquent Collection Rates



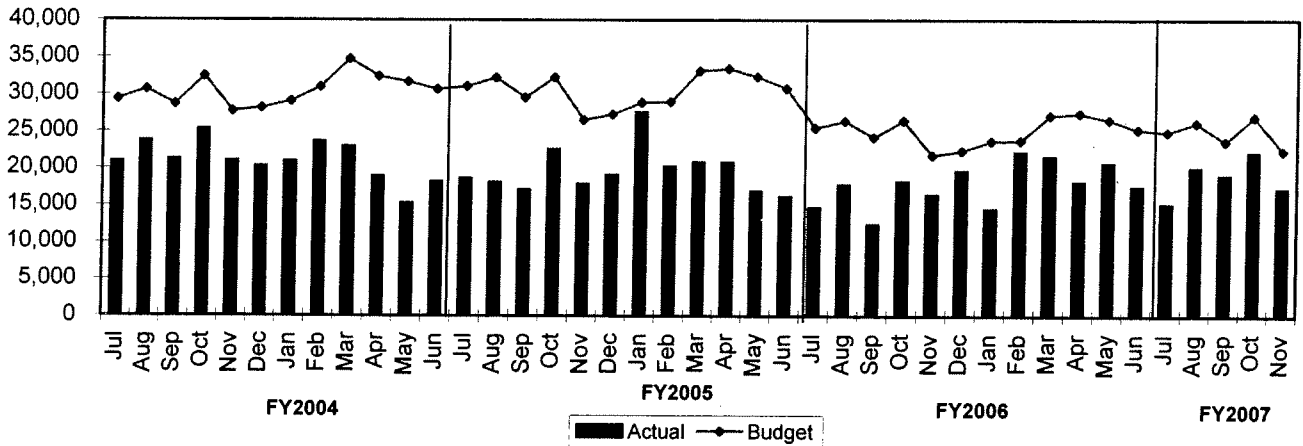
\*Excludes Delinquent Parking Collections

# TREND INDICATORS - MUNICIPAL COURTS

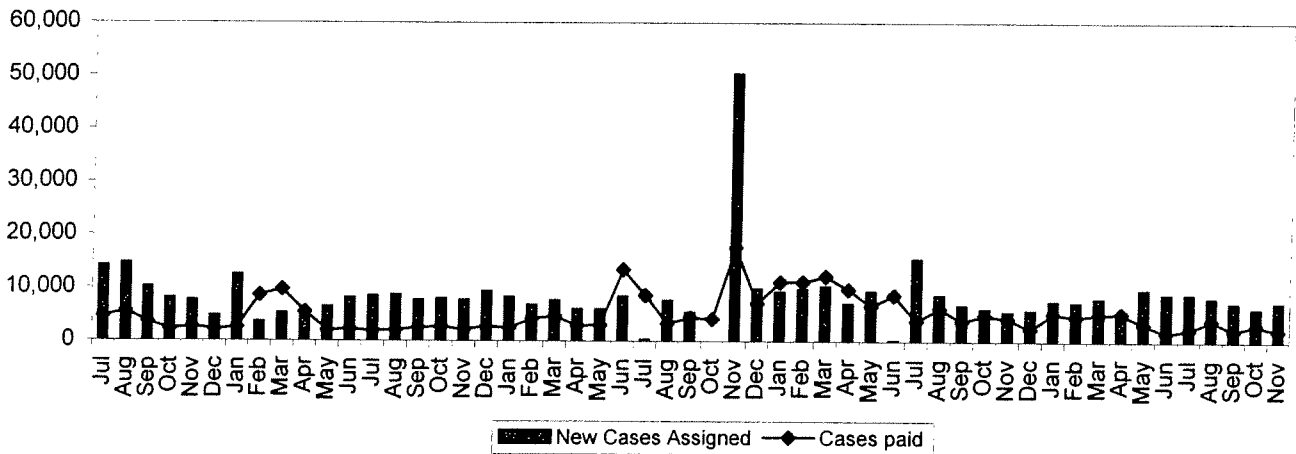
## Meter Revenue vs # Meters in Service



## Parking Violations vs Budget



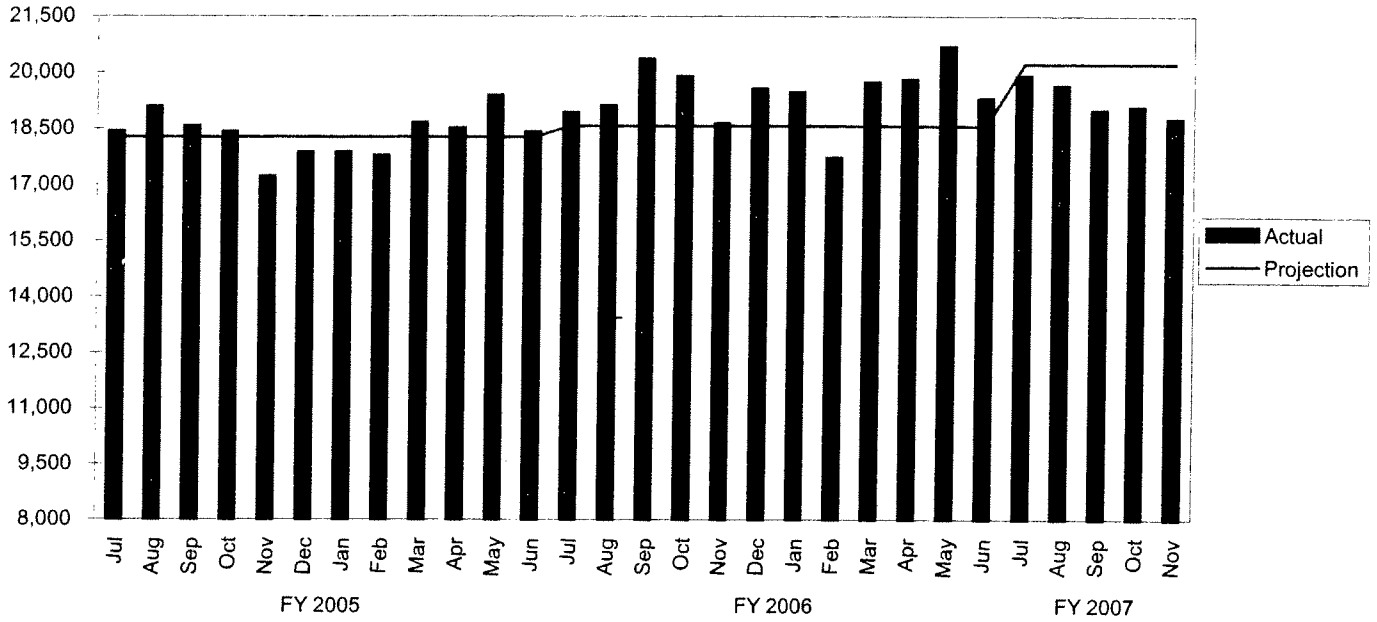
## Parking Meter Violations Linebarger Delinquent Collections Rate



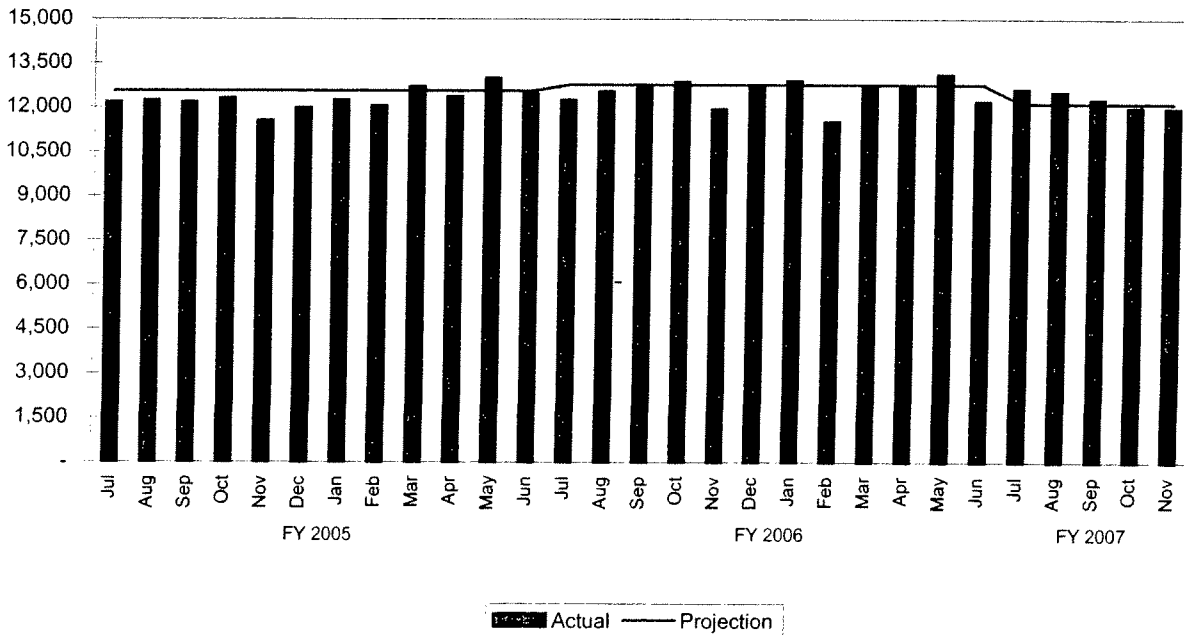


# TREND INDICATORS - AMBULANCE SERVICES

## EMS Incidents

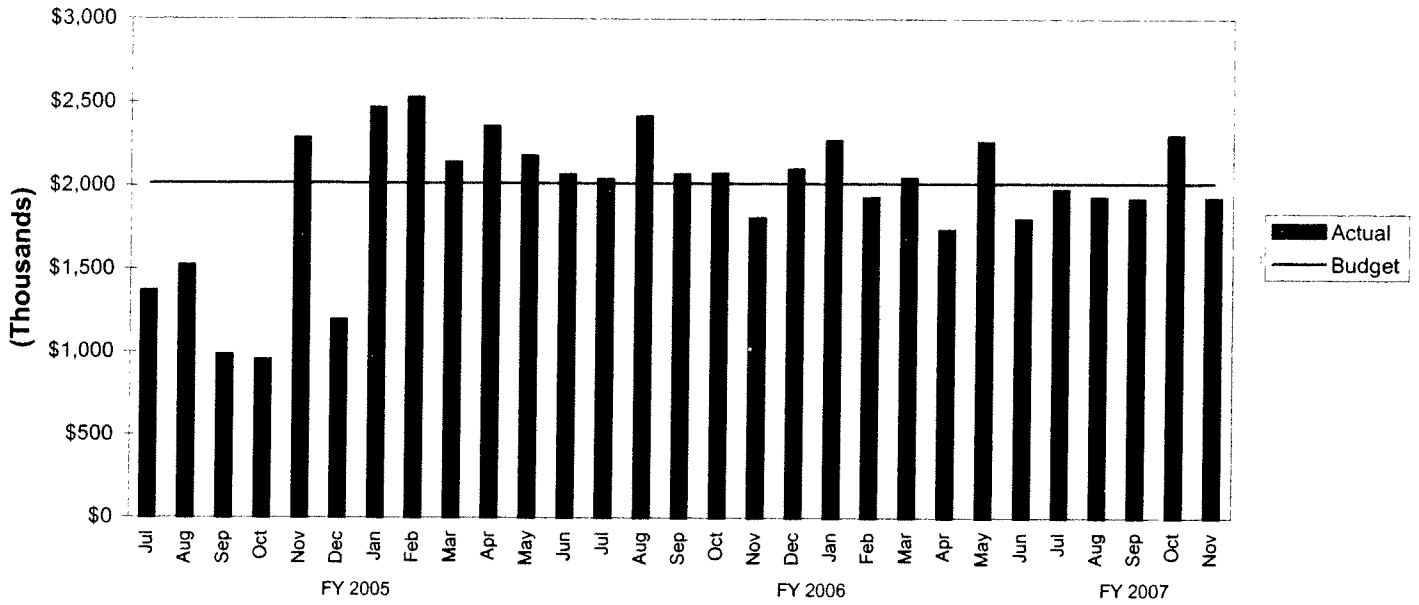


## EMS Transports

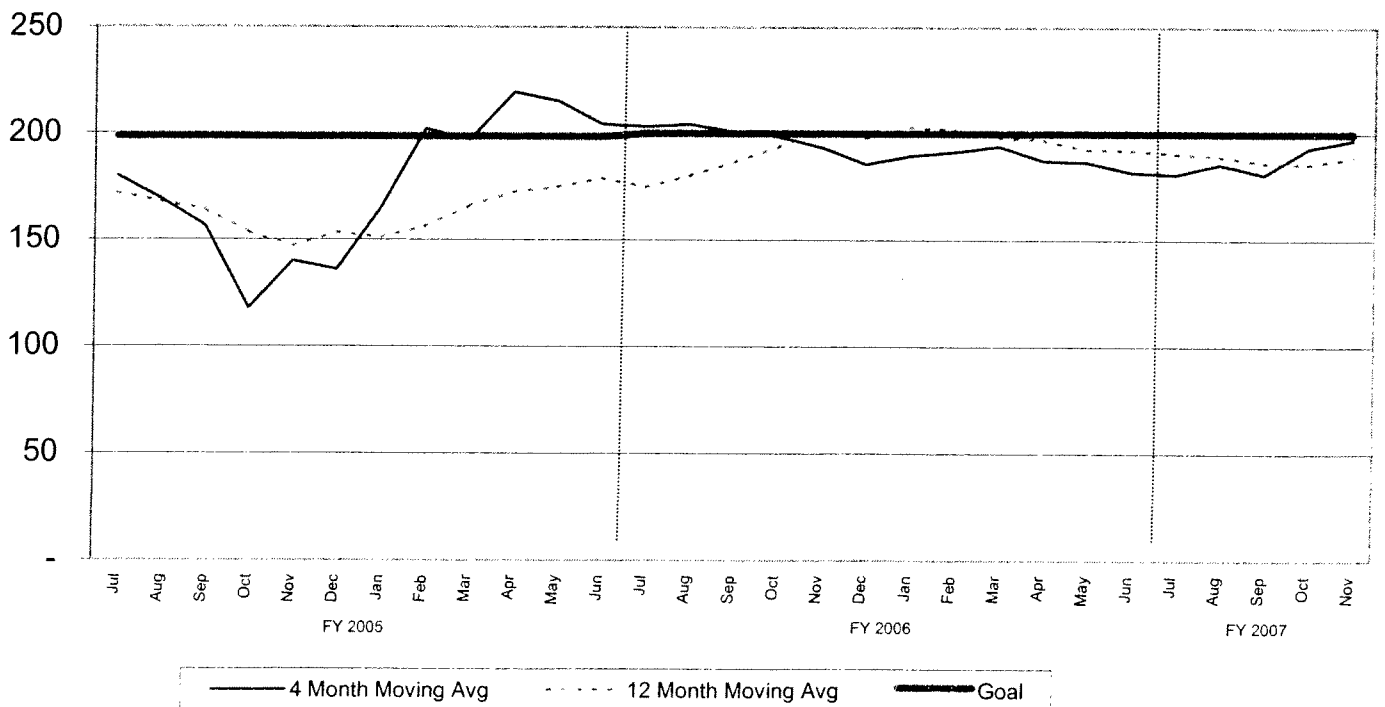


# TREND INDICATORS - AMBULANCE SERVICES

## EMS Revenue (Net Collections)

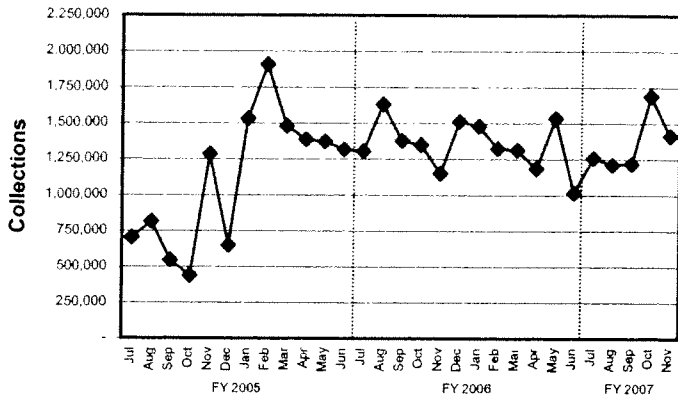


## 4 Month and 12 Month Moving Average EMS Revenue Per Transport

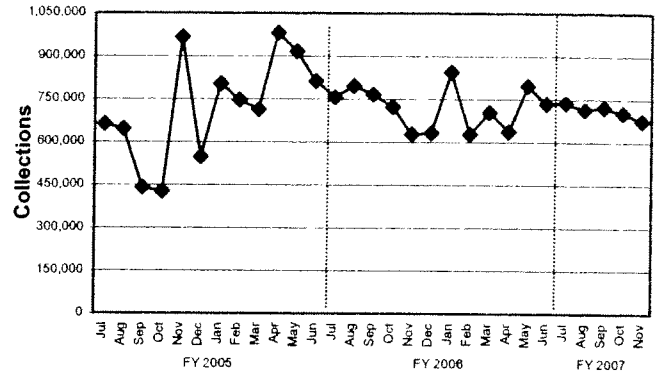


# TREND INDICATORS - AMBULANCE SERVICES

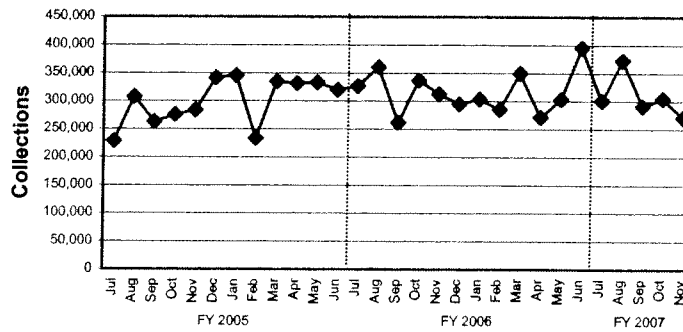
**EMS - Gross Medicare/Caid Revenue**



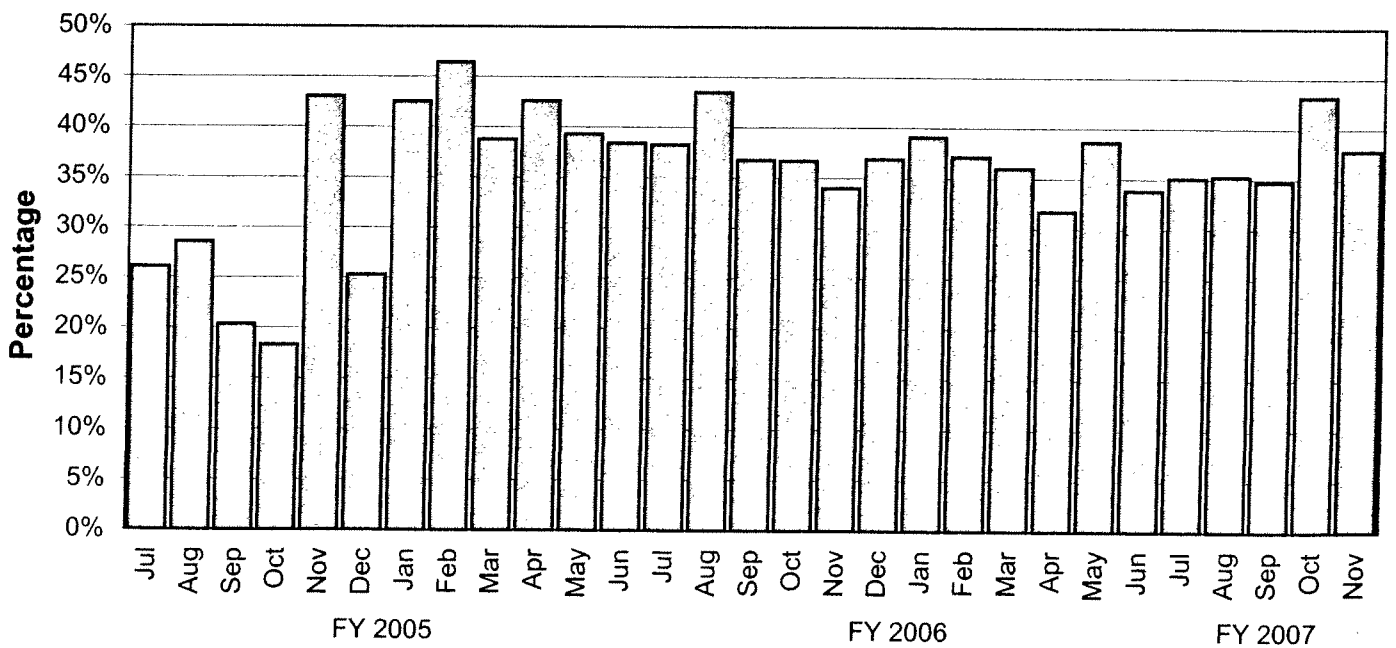
**EMS - Gross Private Insurance Revenue**



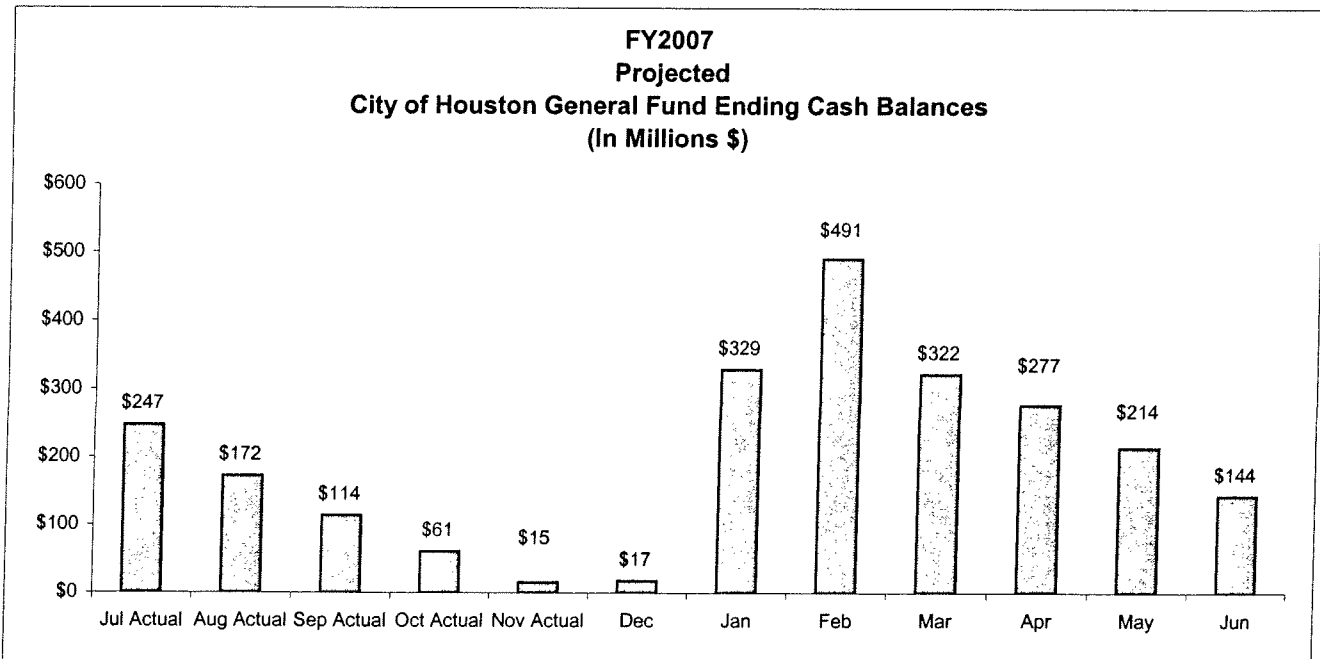
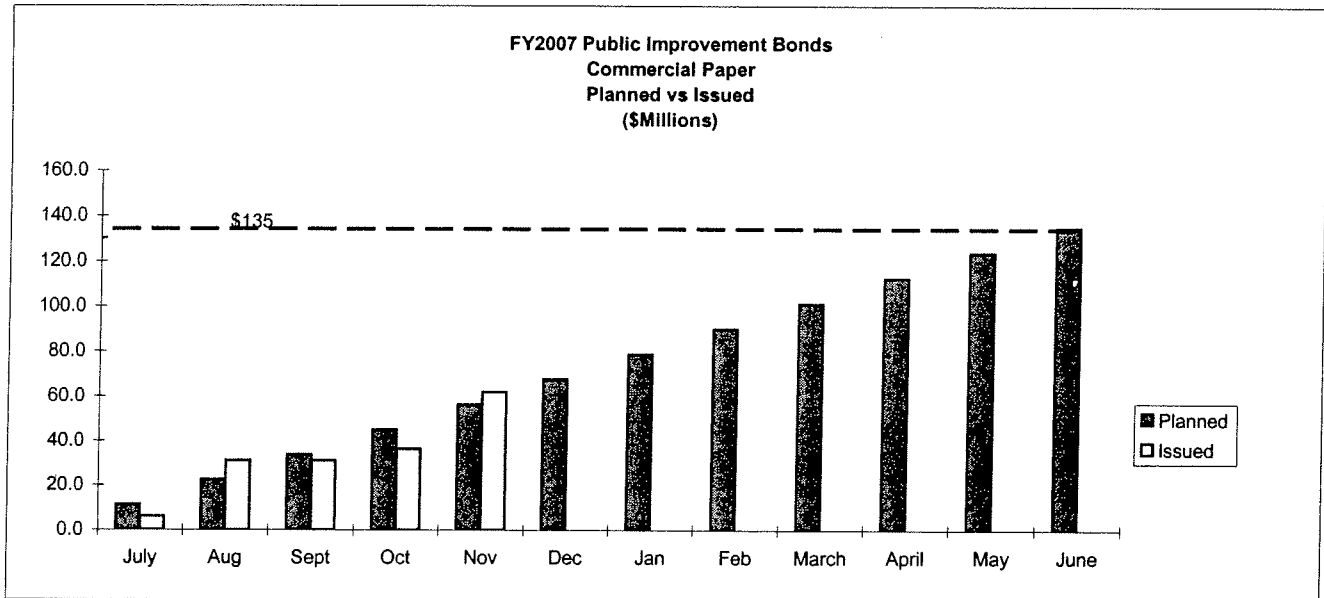
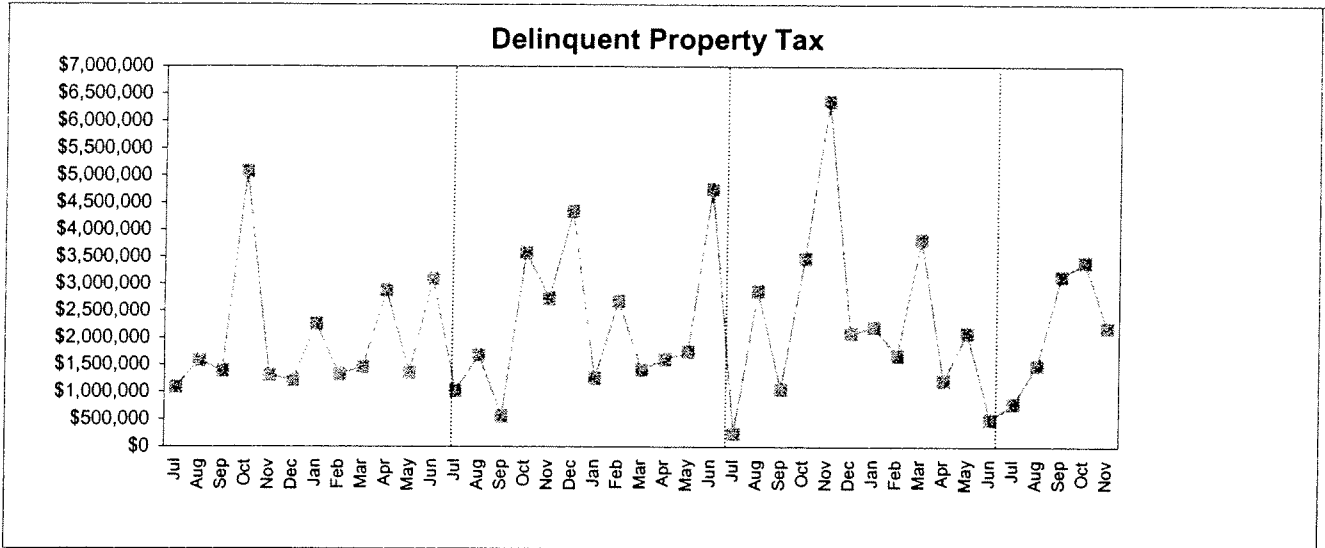
**EMS - Gross Self-Pay Revenue**



**EMS - Gross Collection Percentage**

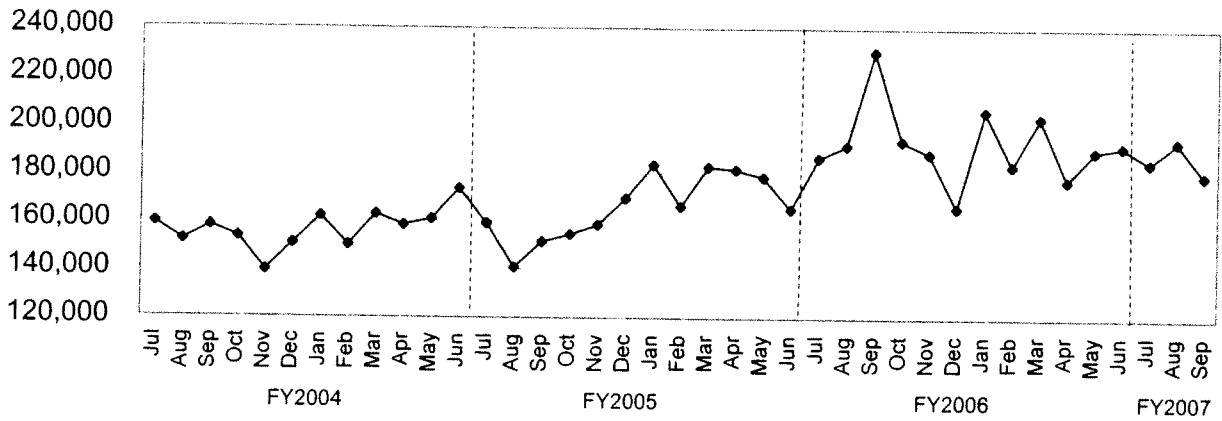


# TREND INDICATORS - MISCELLANEOUS



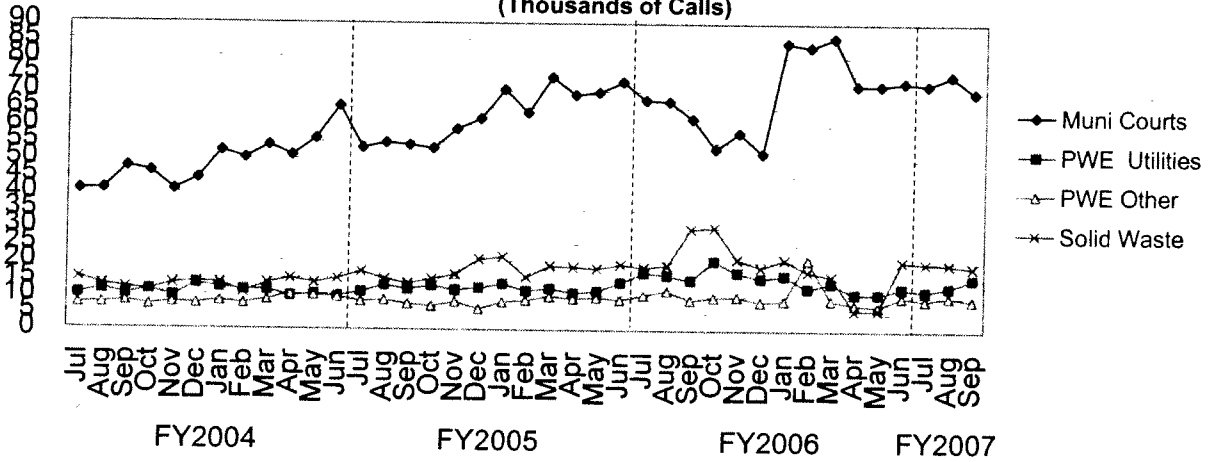
# TREND INDICATORS - MISCELLANEOUS

## 3-1-1 Call Volume



3-1-1 became fully operational in August 2001

## Operator Assisted 3-1-1 Call Distribution (Thousands of Calls)



4 largest users of operator assisted 3-1-1 calls.