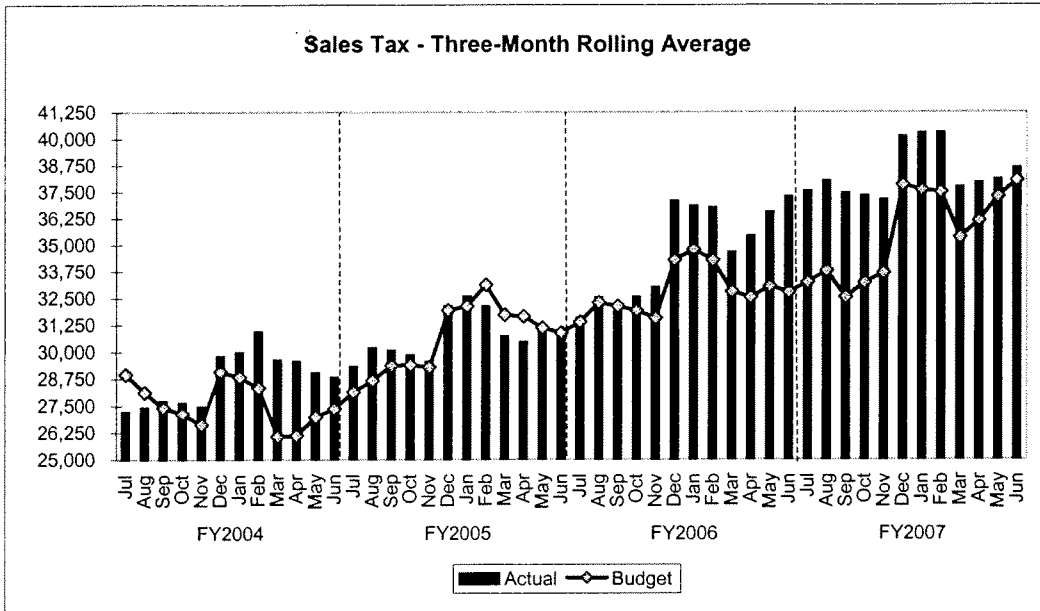
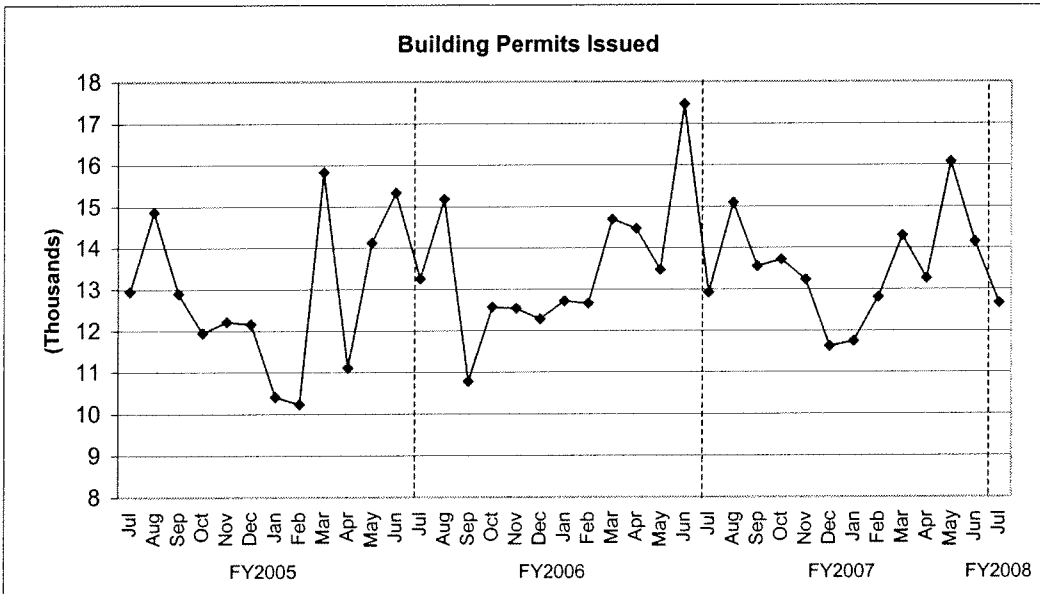


## TREND INDICATORS - LOCAL ECONOMY



Source: Office of State Comptroller

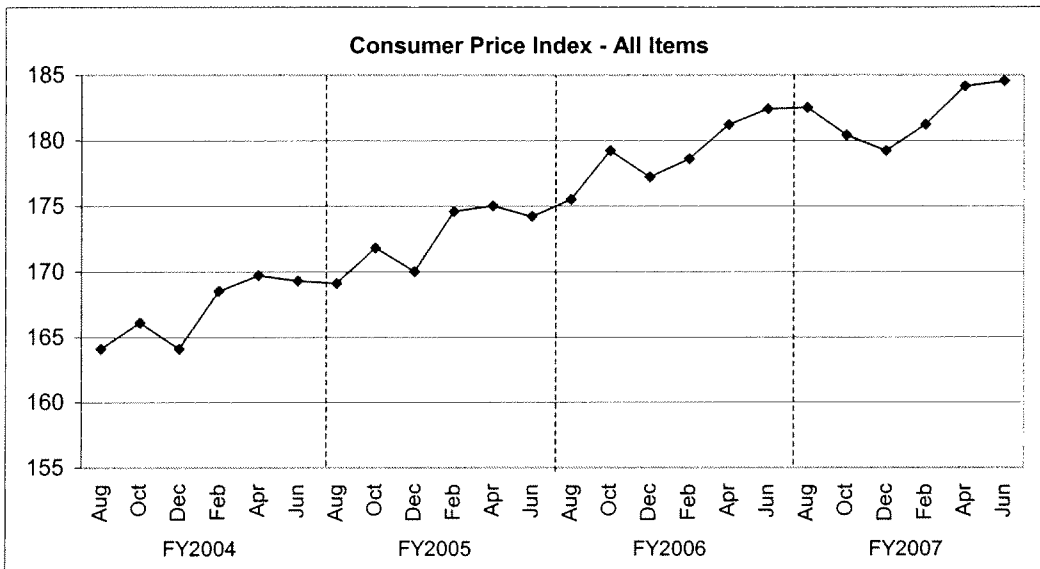


Source: City of Houston Planning and Development Department

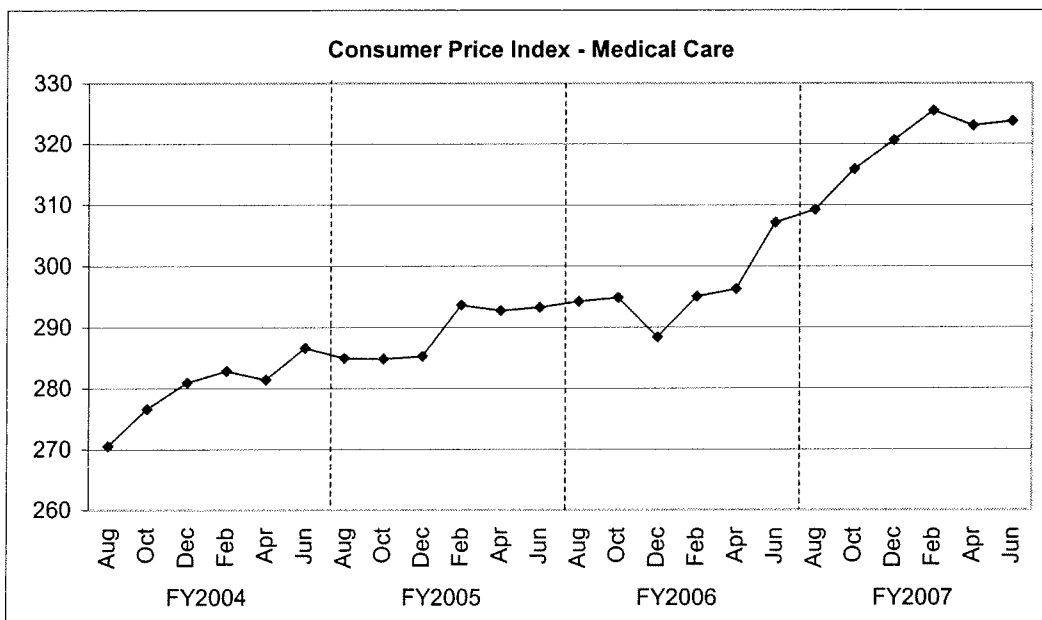


Source: Databook Houston; University of Houston Center for Public Policy; not seasonally adjusted

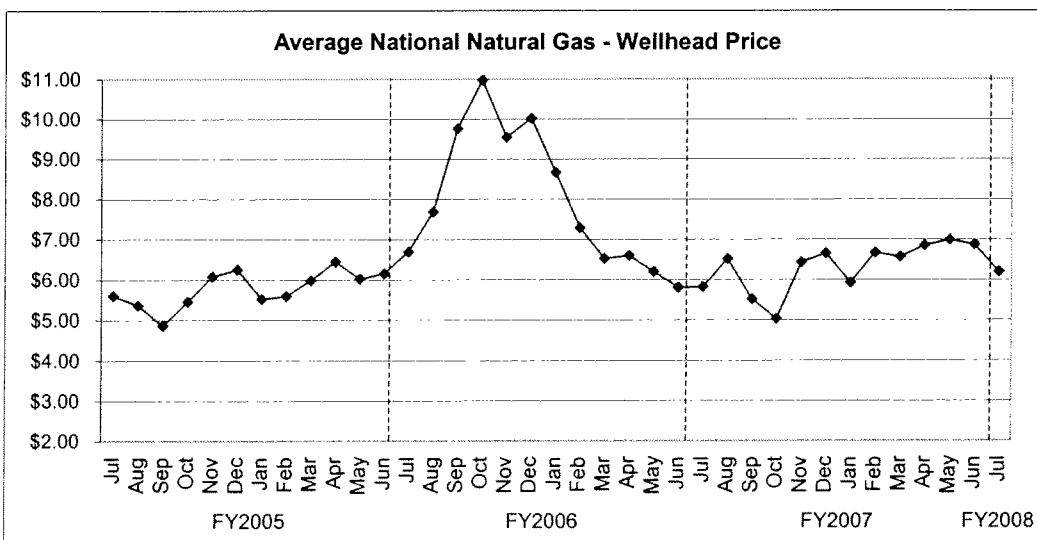
**TREND INDICATORS - LOCAL ECONOMY**



Source: Bureau of Labor Statistics - Houston, Galveston, Brazoria TX

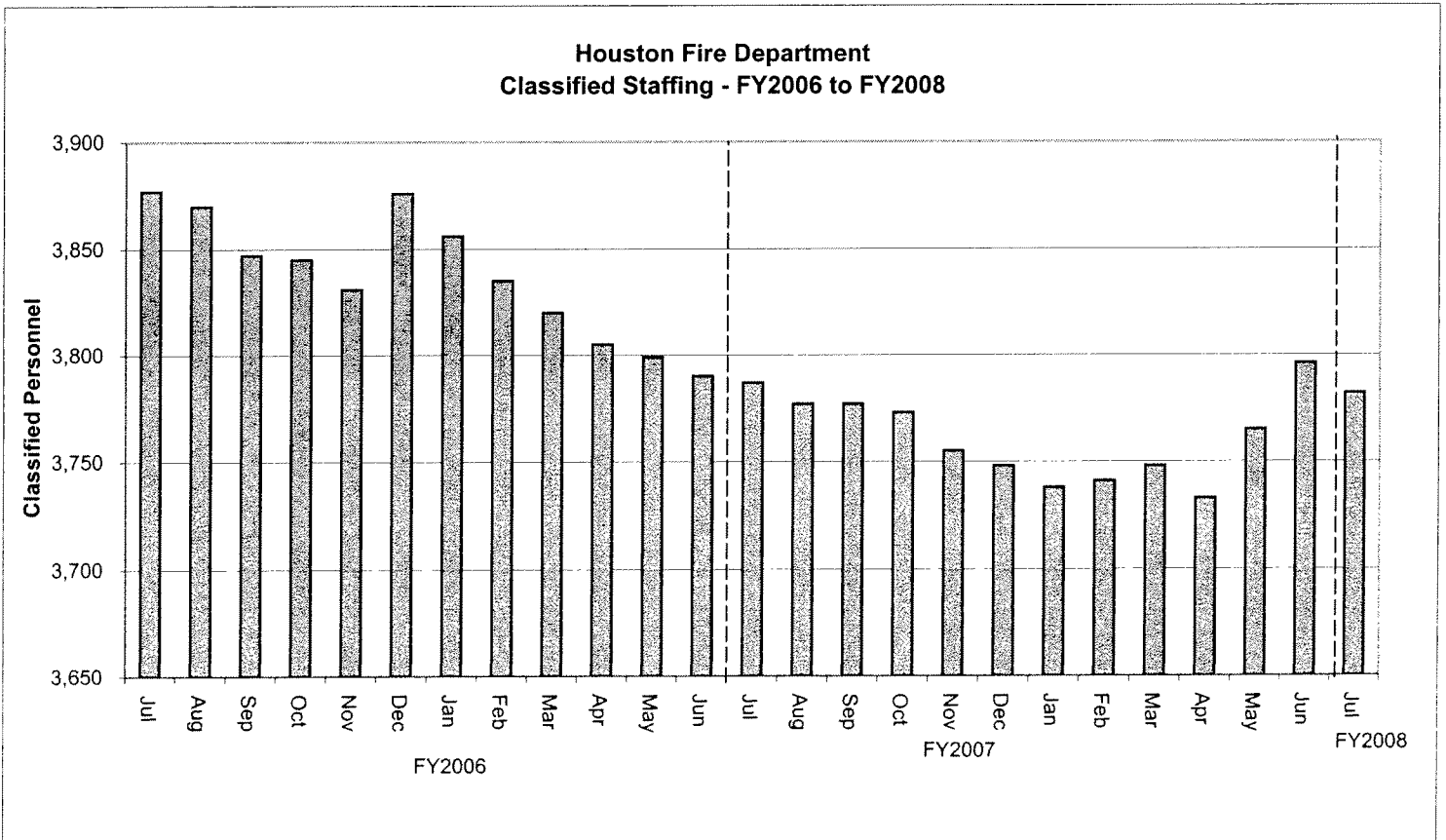
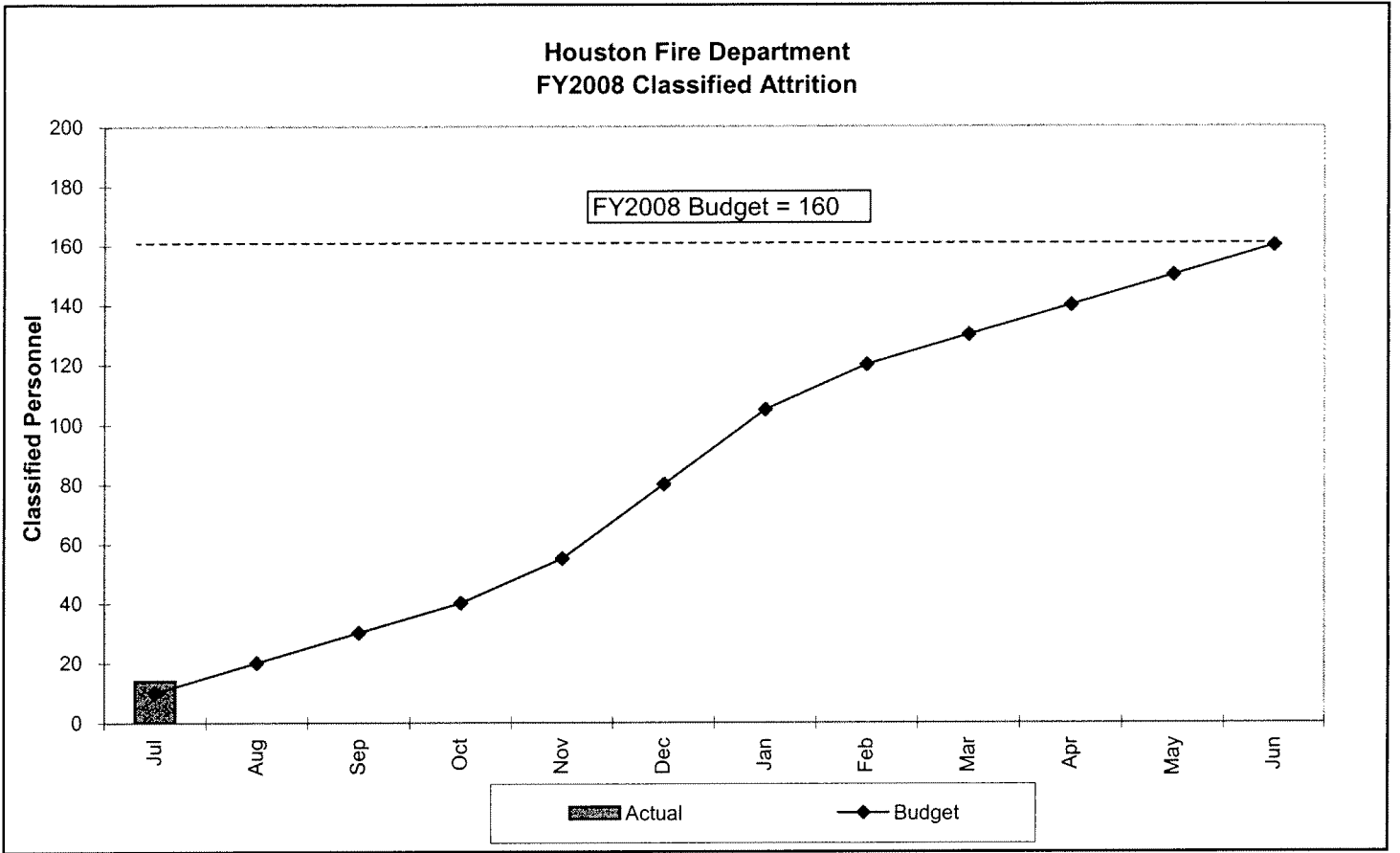


Source: Bureau of Labor Statistics - Houston, Galveston, Brazoria TX



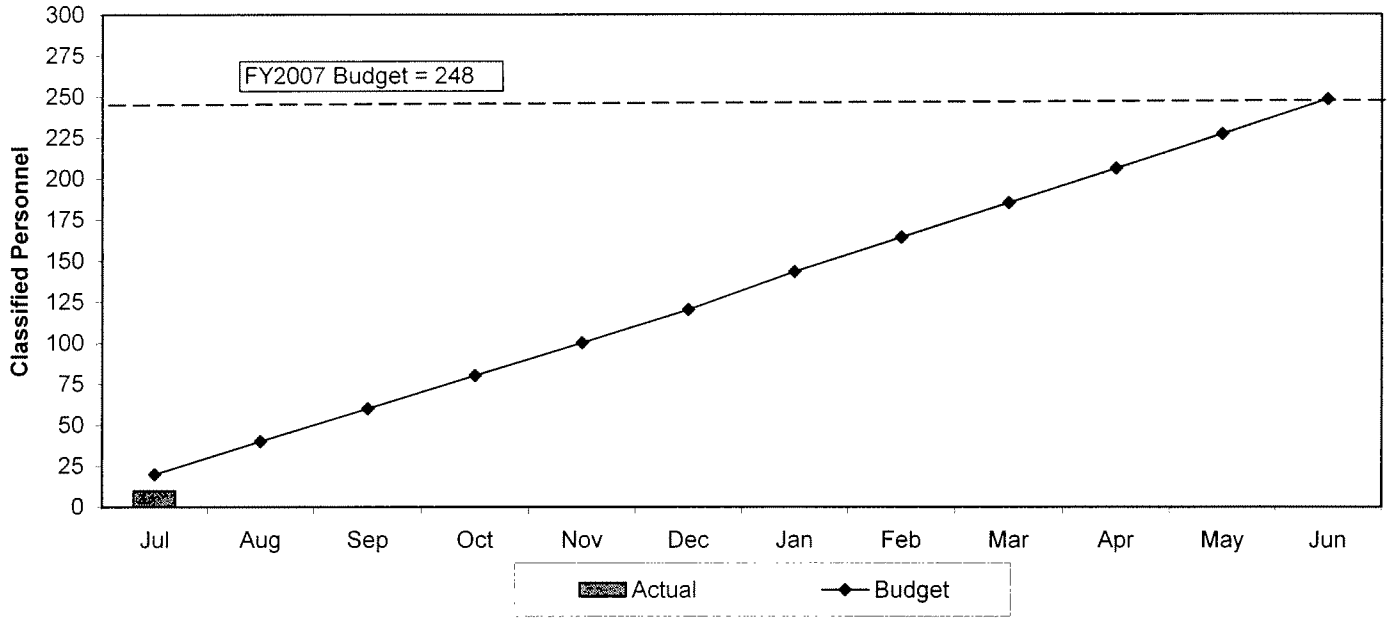
Source: Energy Information Administration/Natural Gas Monthly

# TREND INDICATORS - RETIREMENTS

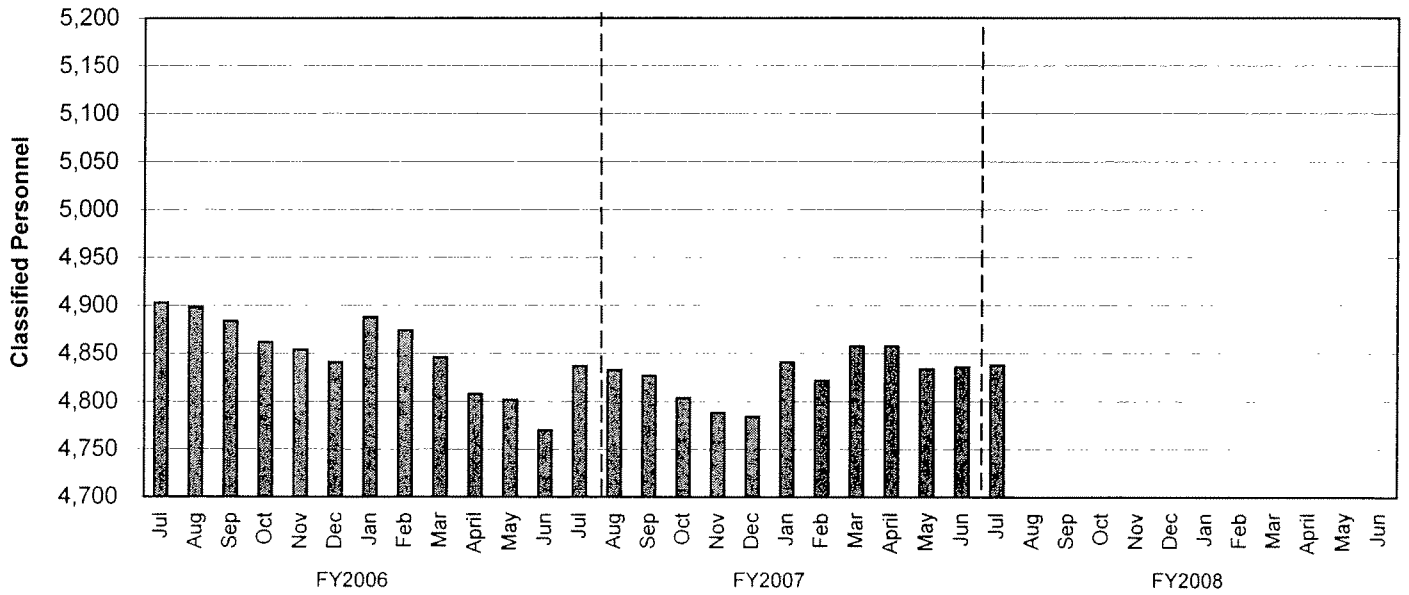


## TREND INDICATORS - HIRING AND RETIREMENTS

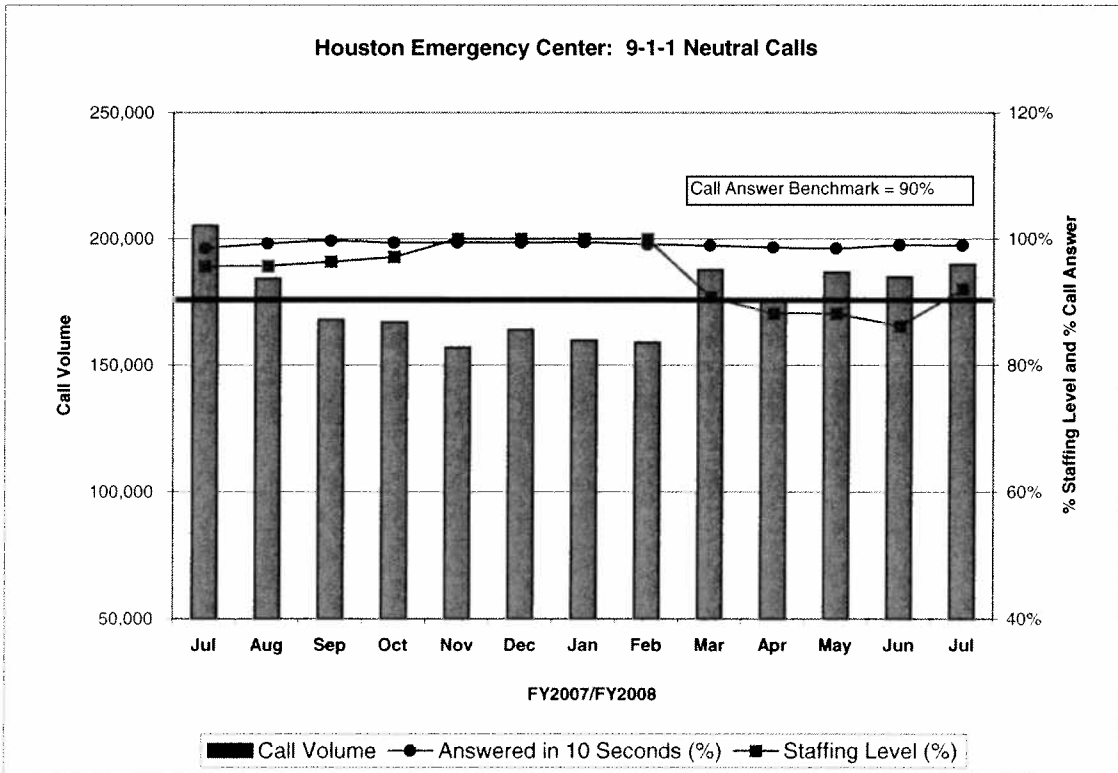
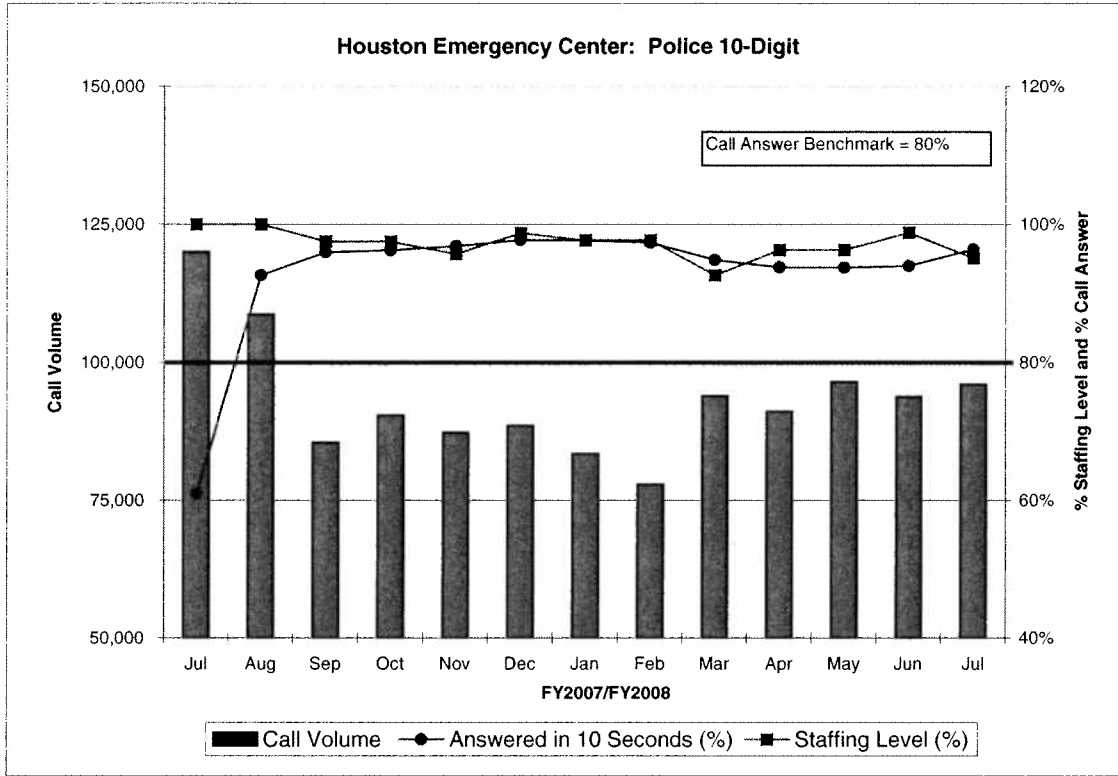
**Houston Police Department  
FY2008 Classified Attrition**



**Houston Police Department  
Classified Staffing - FY2006 to FY2008**

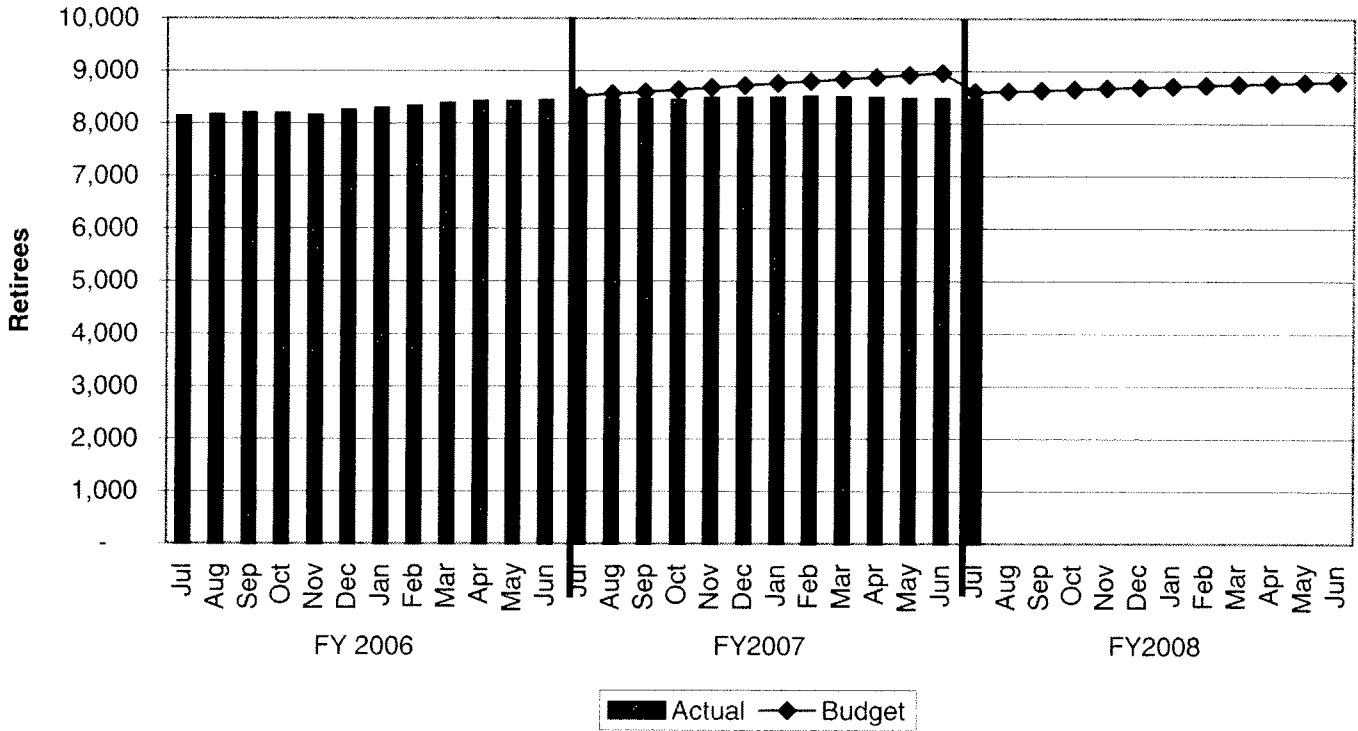


# TREND INDICATORS - HOUSTON EMERGENCY CENTER



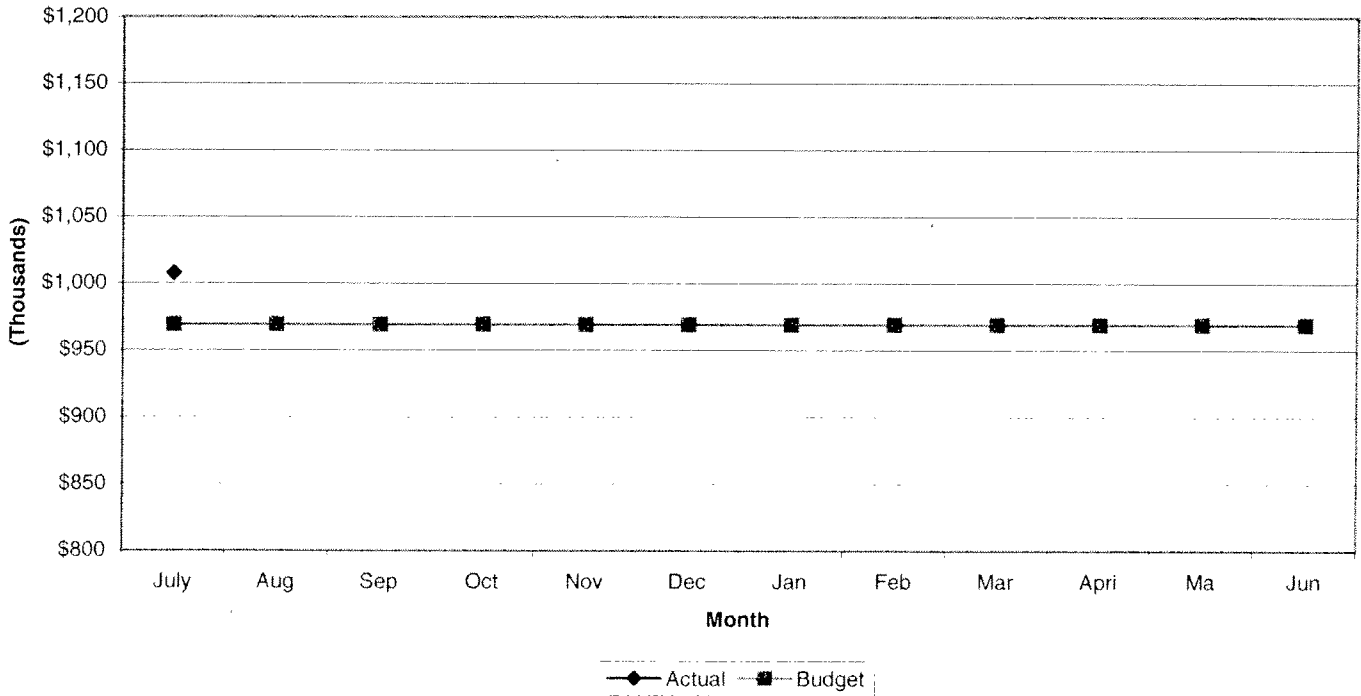
## TREND INDICATORS - RETIREMENTS

### Retirees Receiving Health Benefits

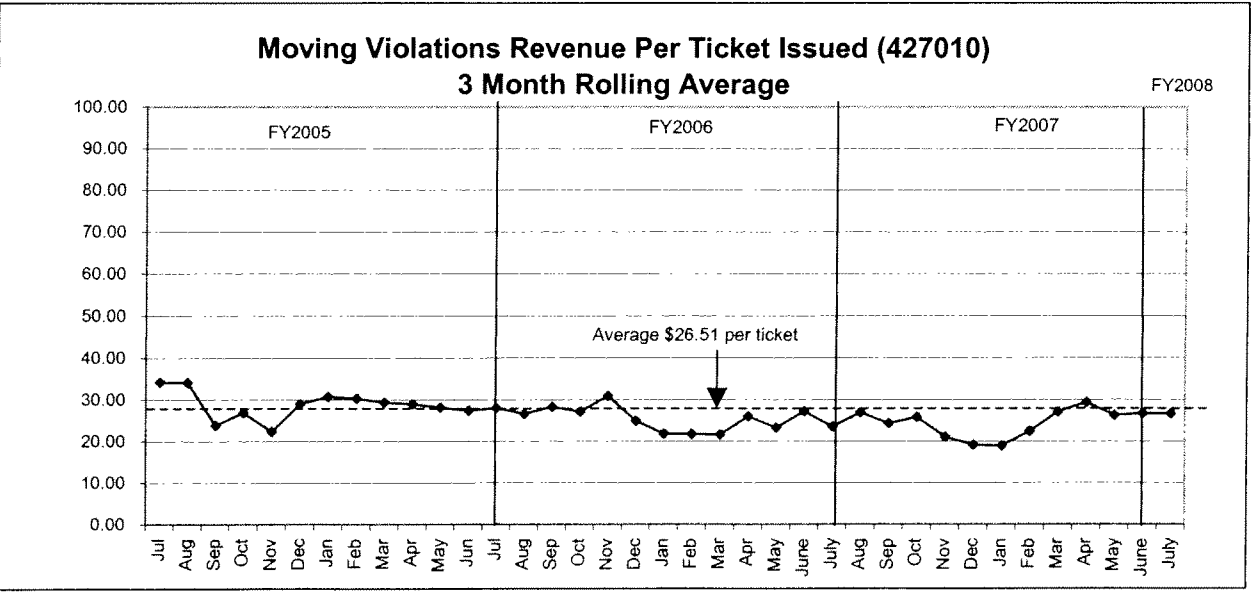
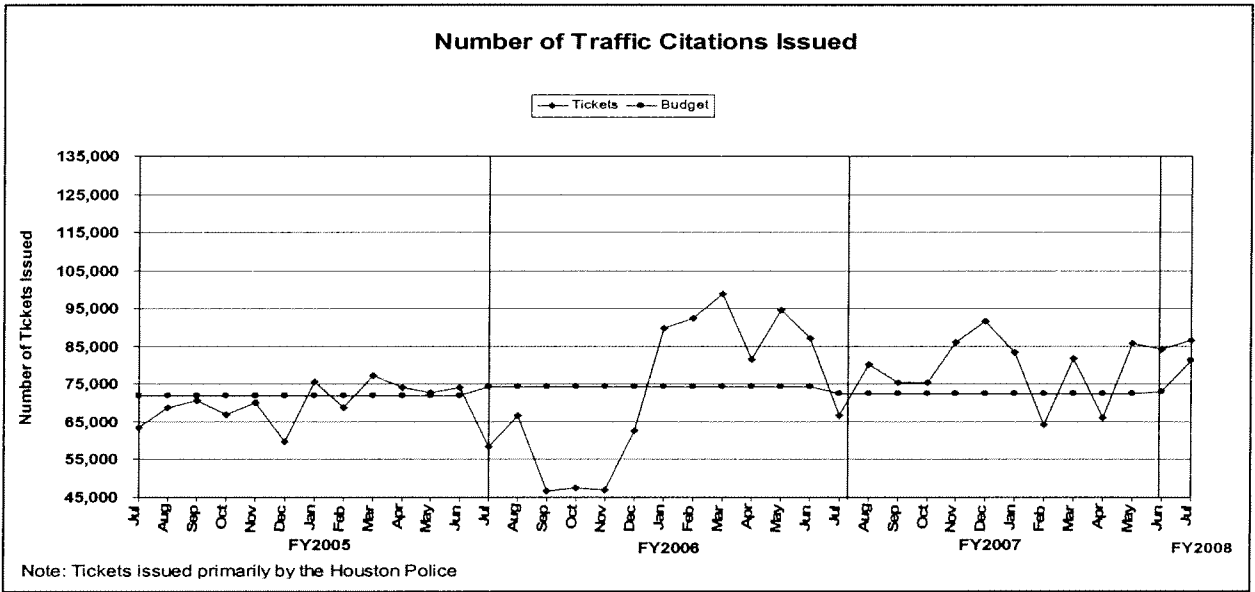
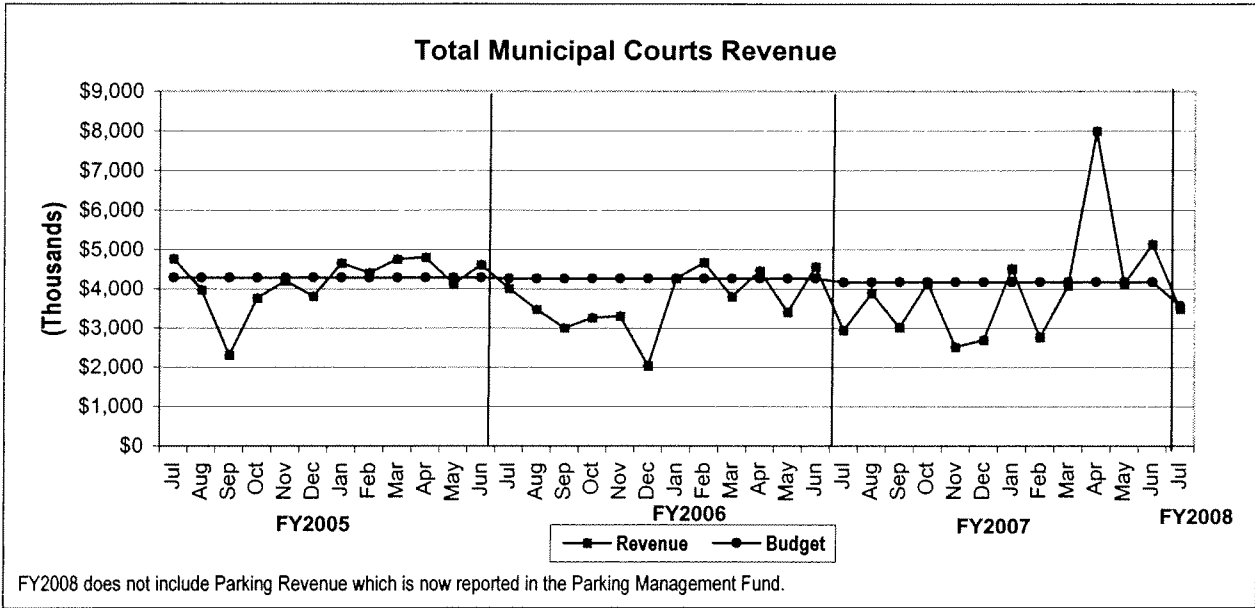


## TREND INDICATORS - PARKING MANAGEMENT

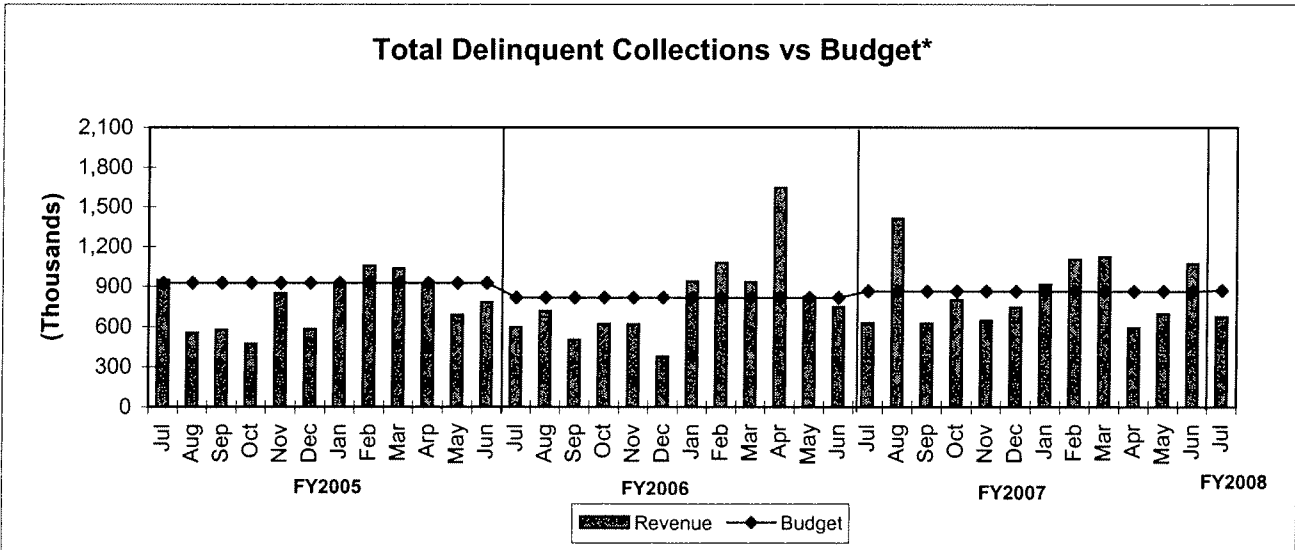
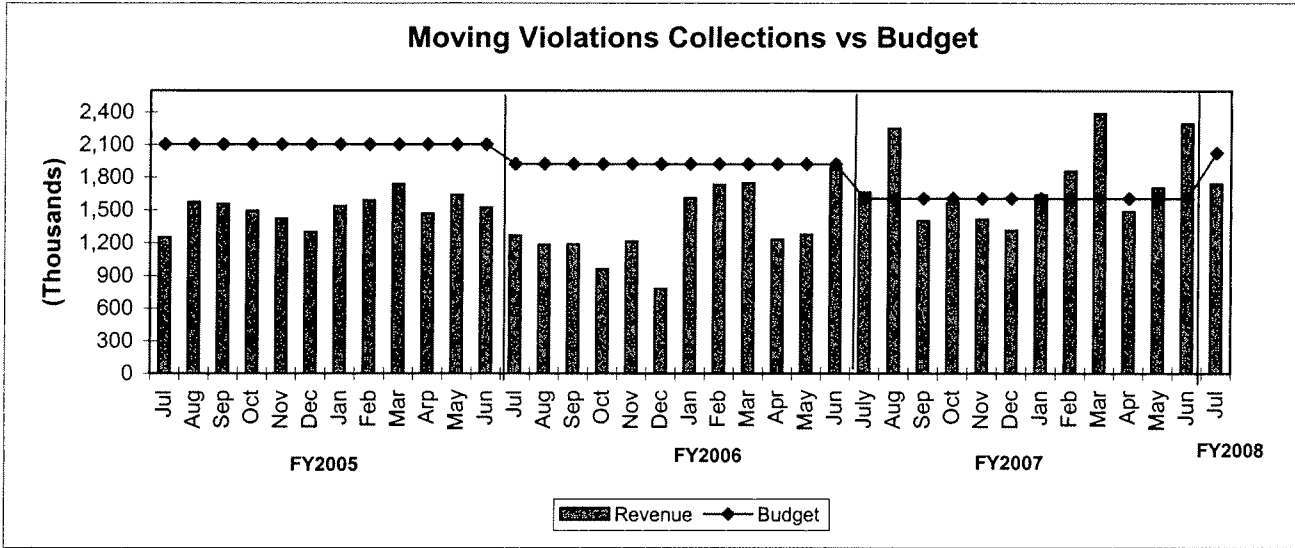
### Total Parking Management Revenue



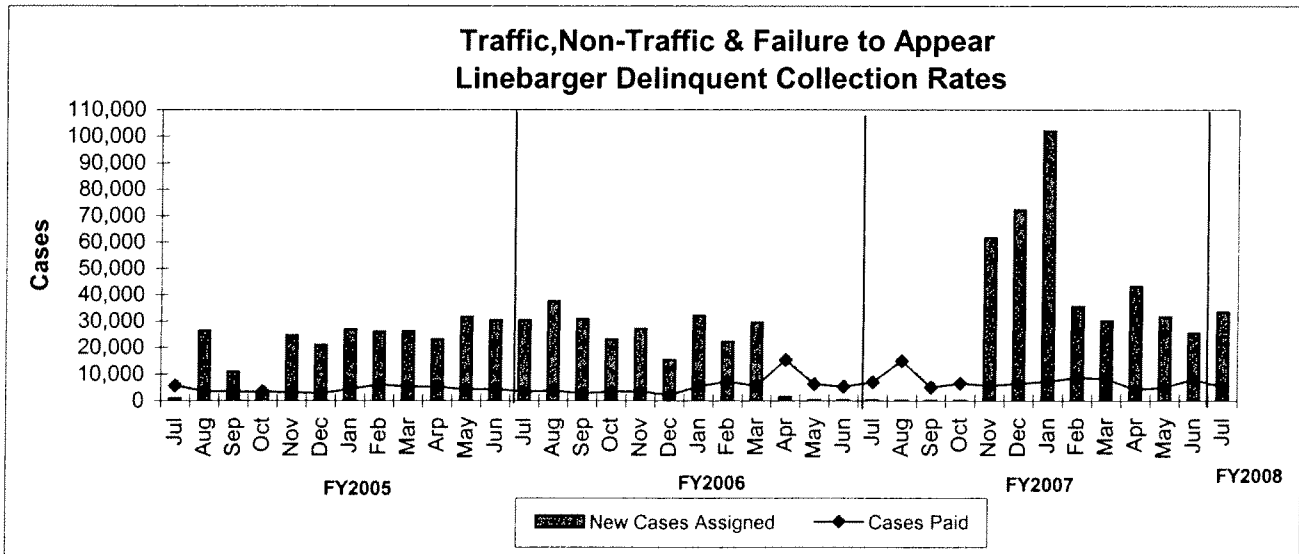
# TREND INDICATORS - MUNICIPAL COURTS



# TREND INDICATORS - MUNICIPAL COURTS



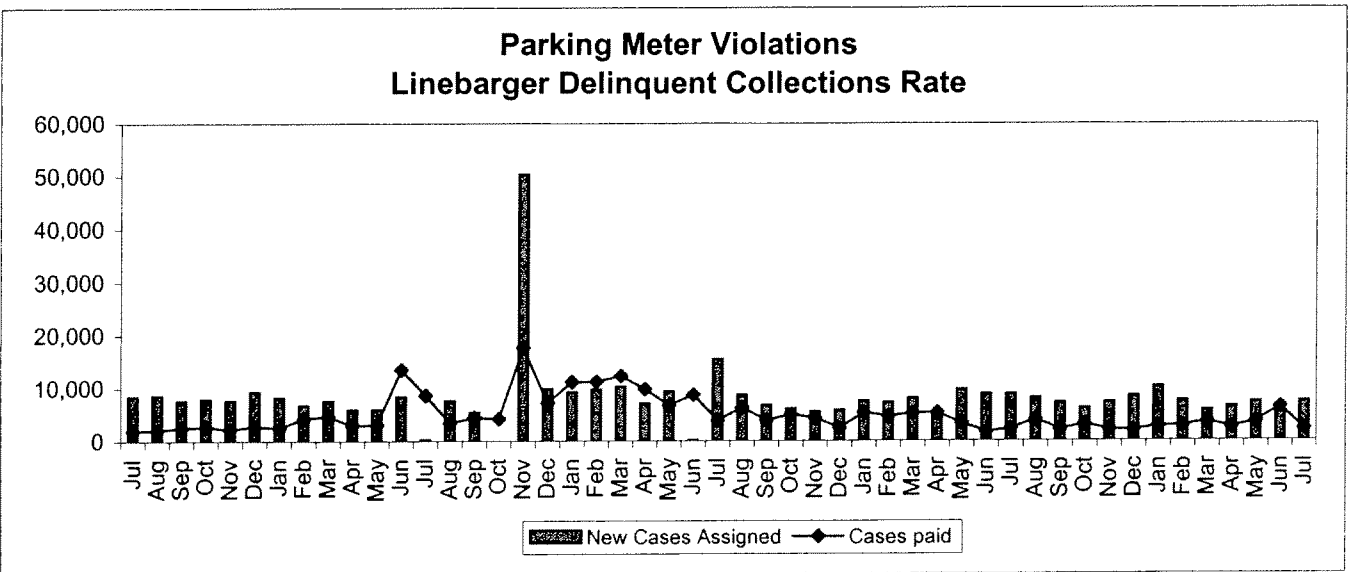
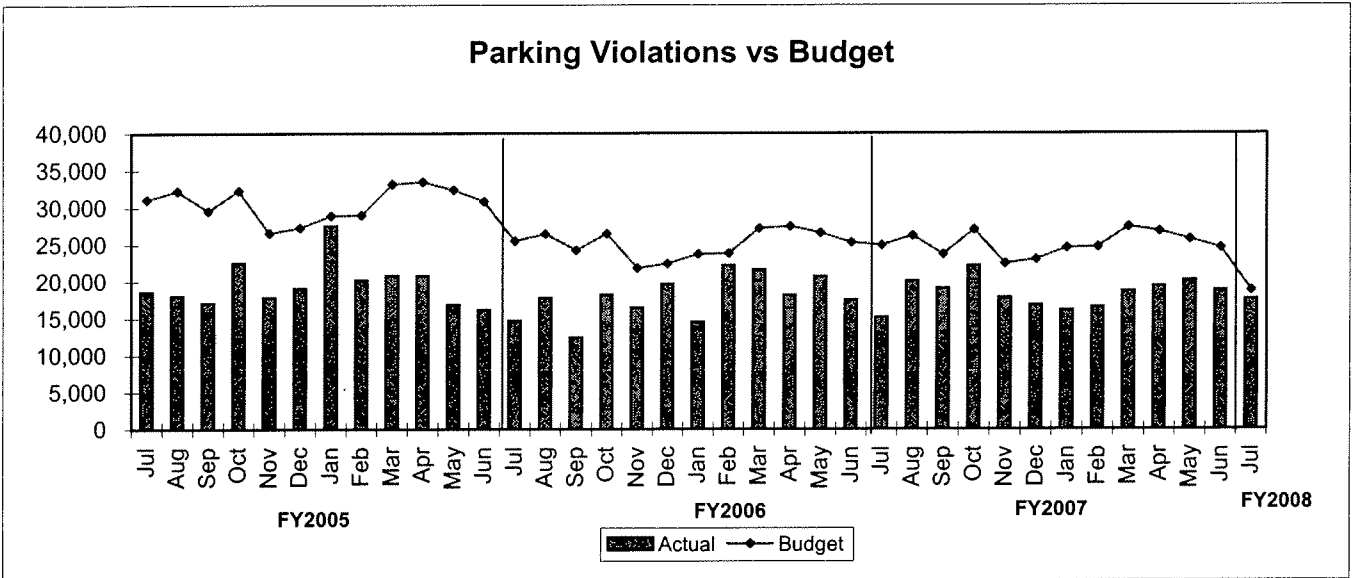
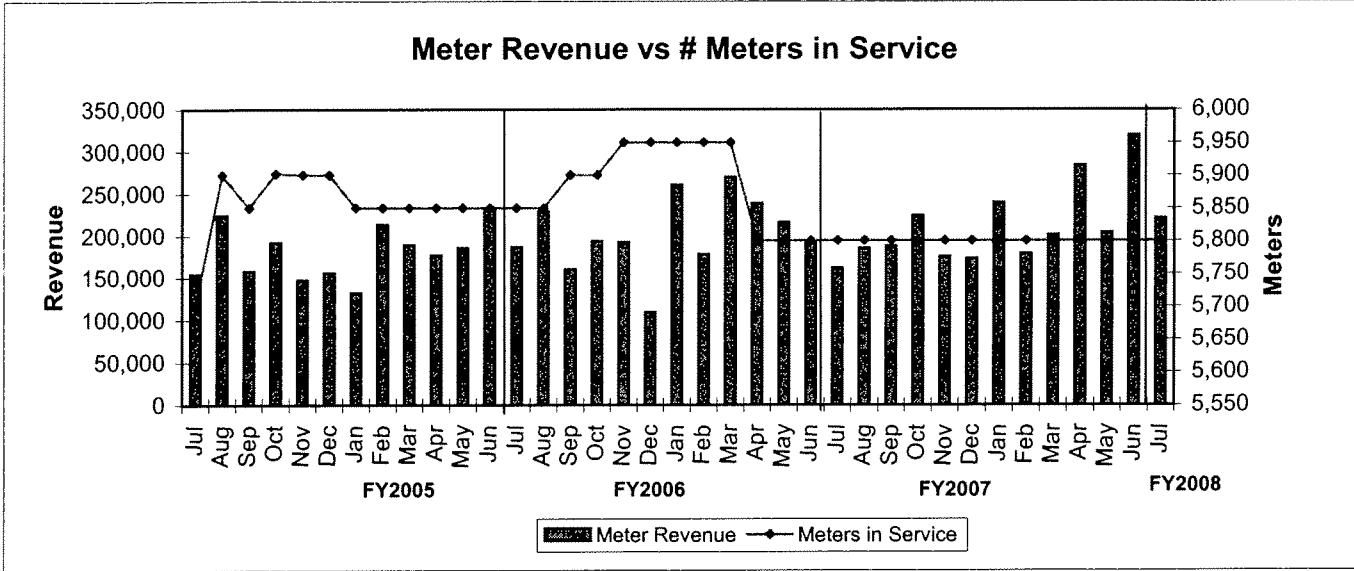
\*Net of fees and expenses paid to Linebarger



\*Excludes Delinquent Parking Collections

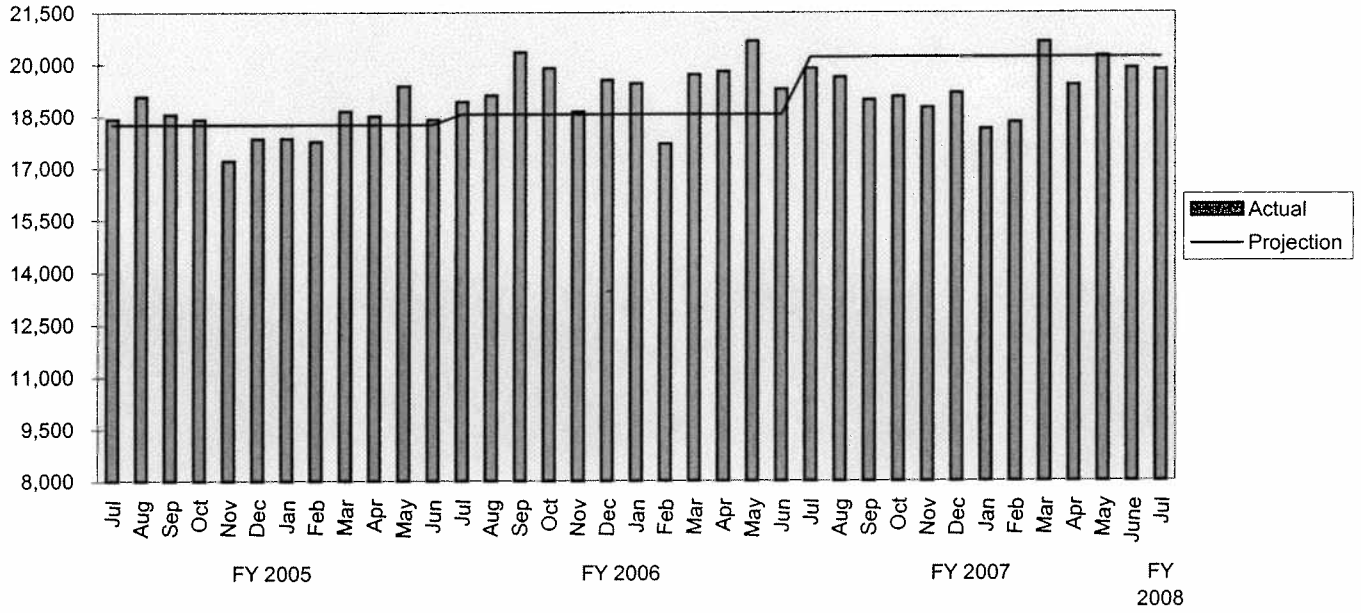


# TREND INDICATORS - MUNICIPAL COURTS

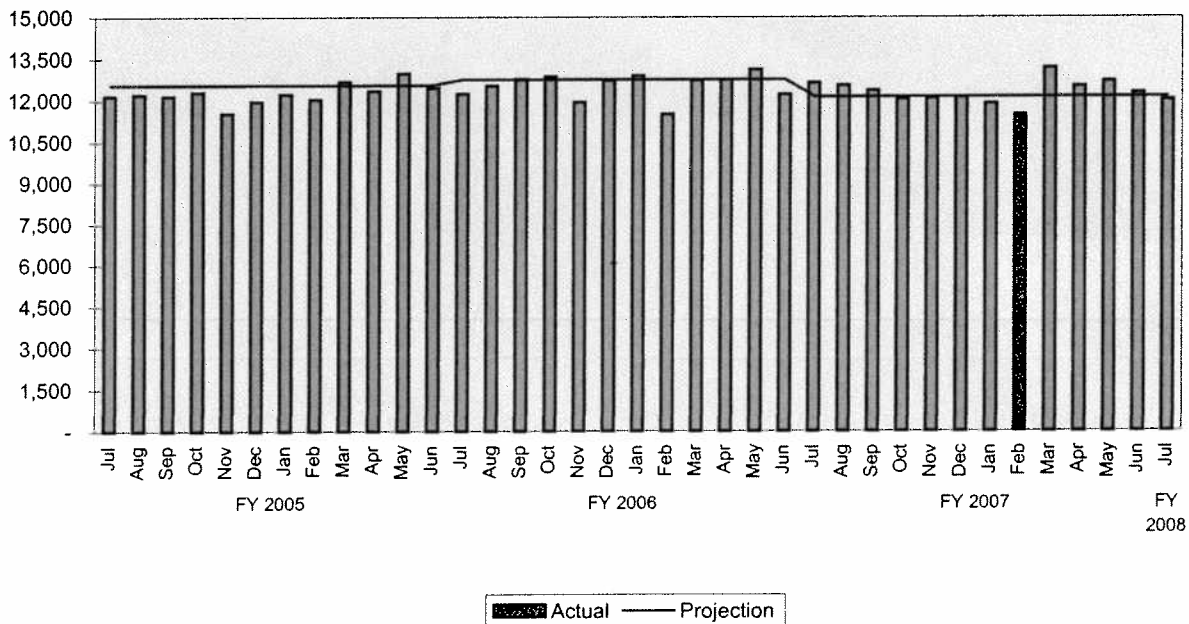


# TREND INDICATORS - AMBULANCE SERVICES

## EMS Incidents

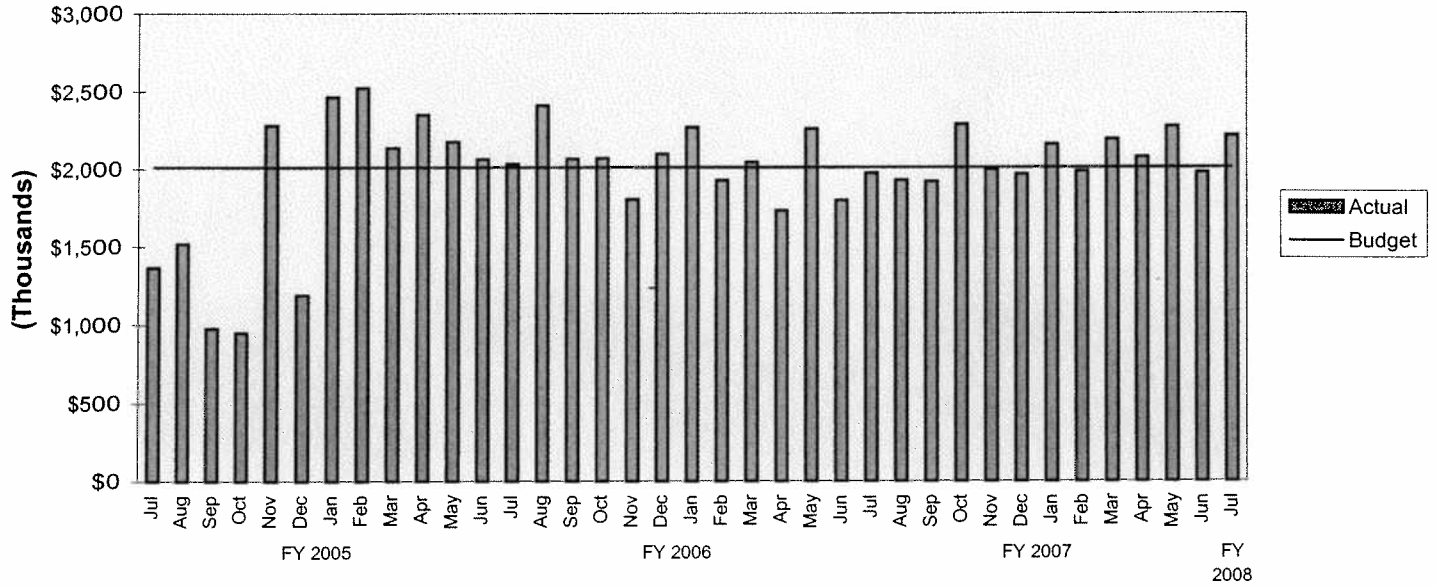


## EMS Transports

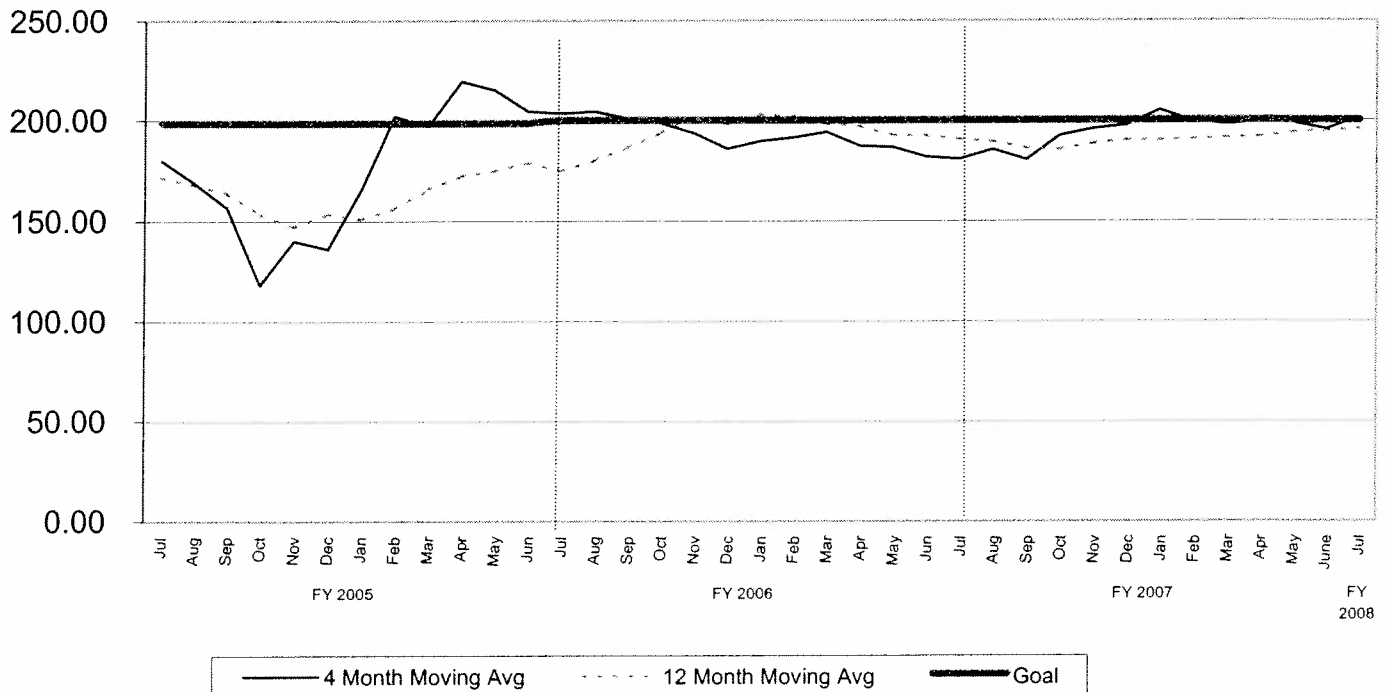


# TREND INDICATORS - AMBULANCE SERVICES

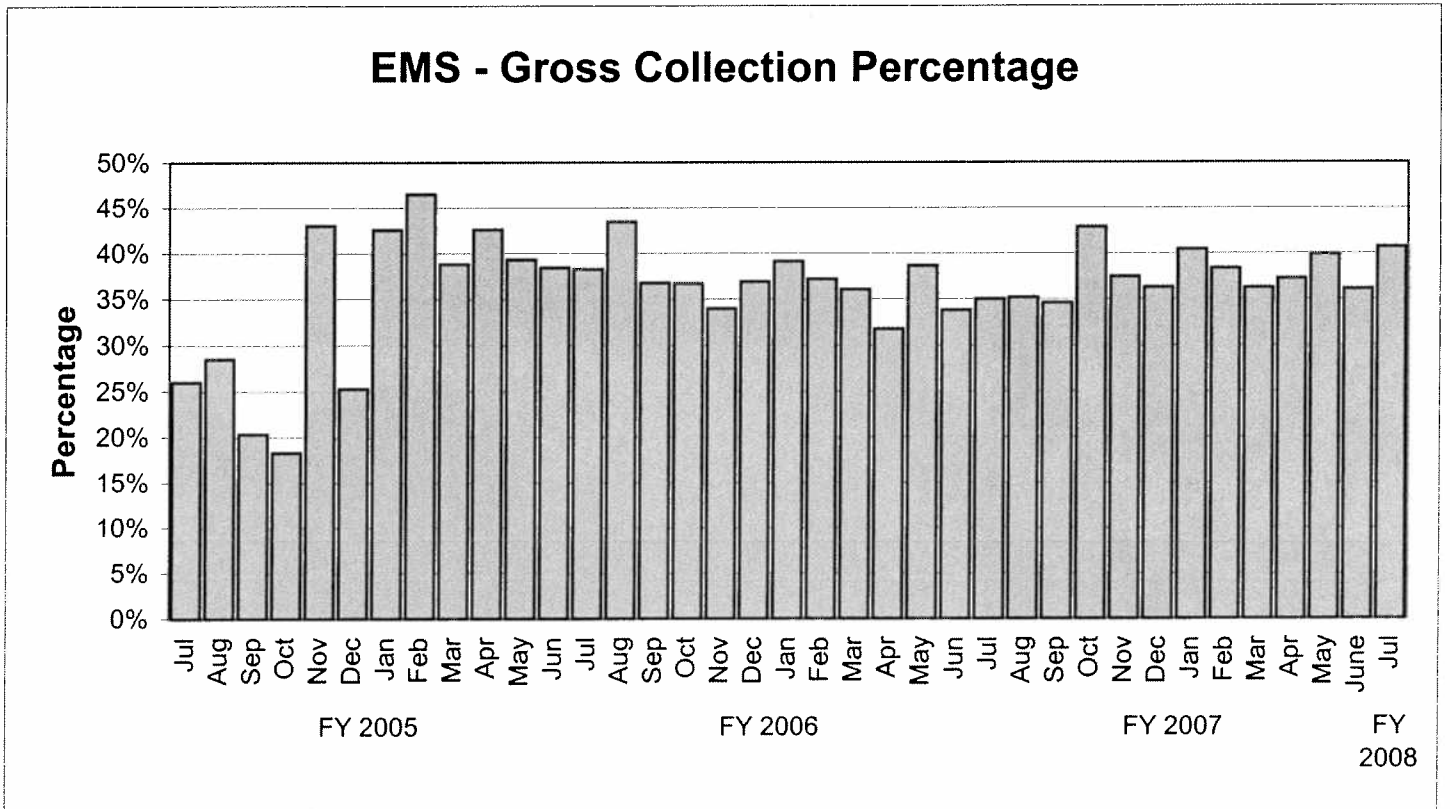
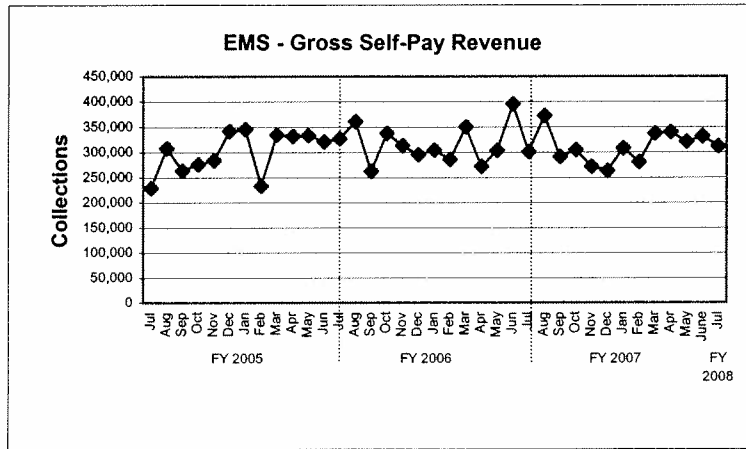
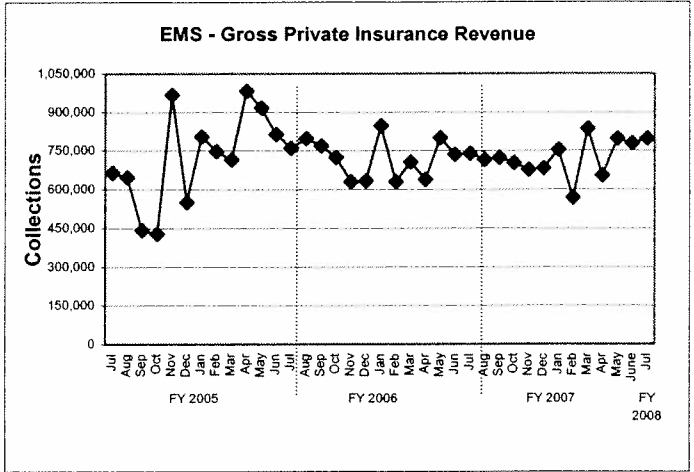
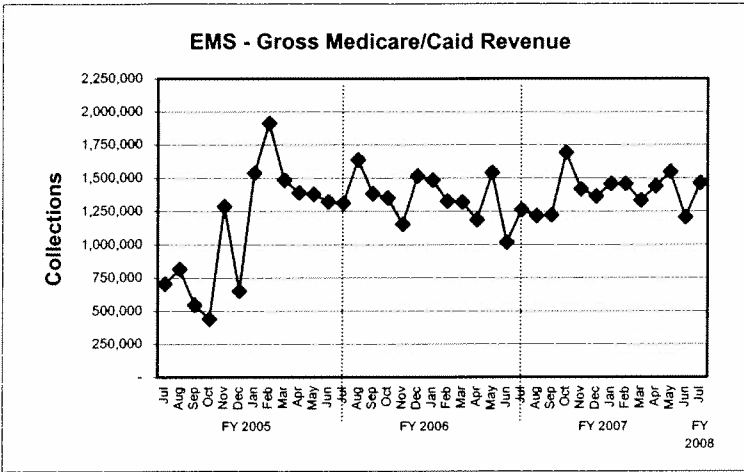
## EMS Revenue (Net Collections)



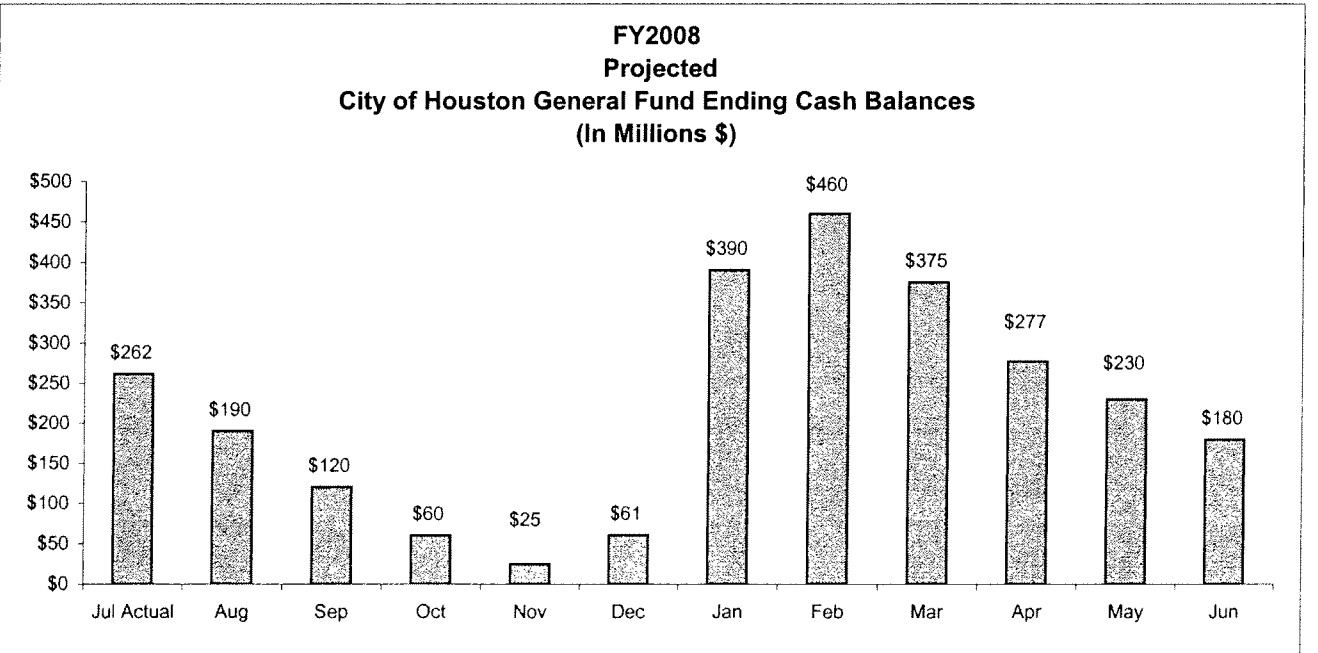
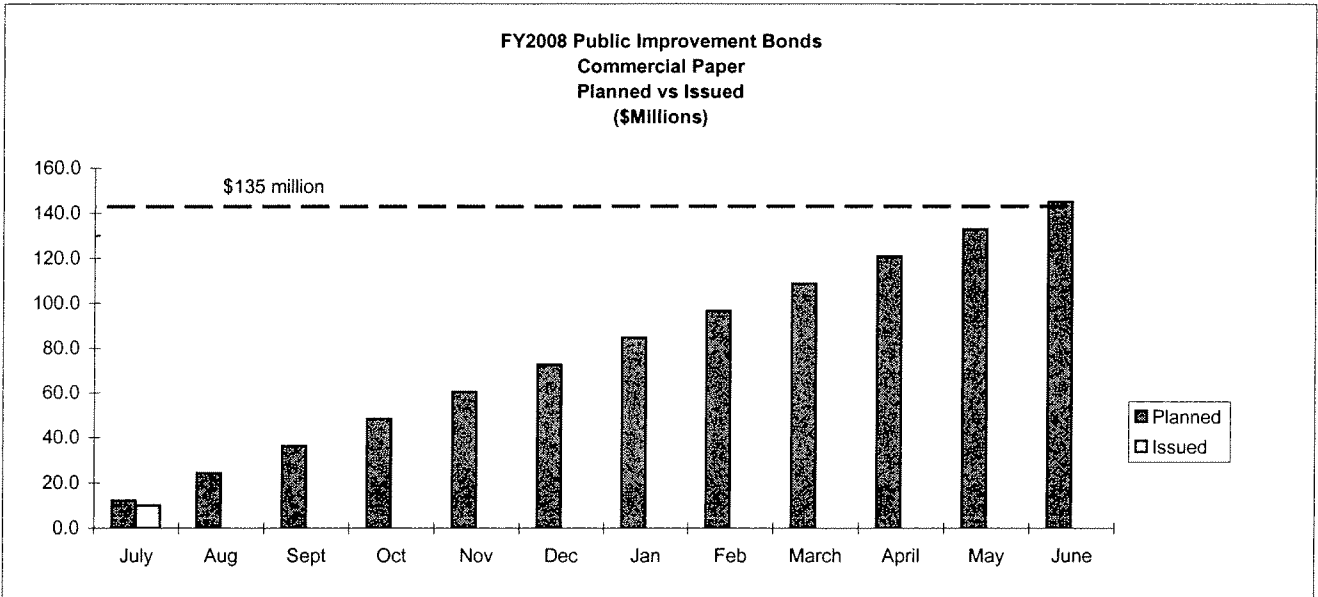
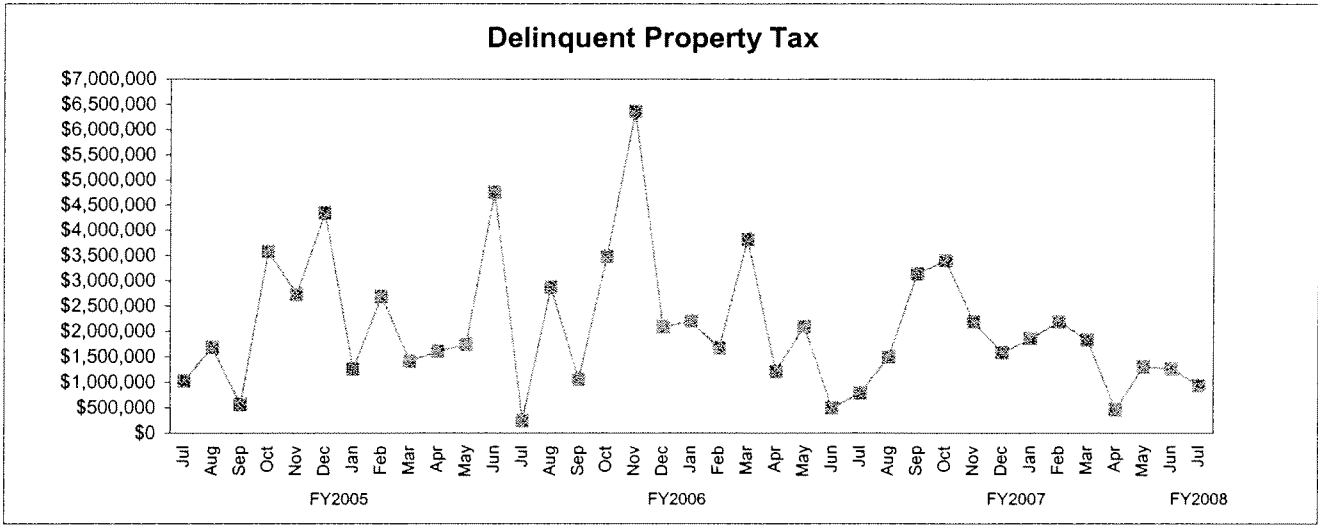
## 4 Month and 12 Month Moving Average EMS Revenue Per Transport



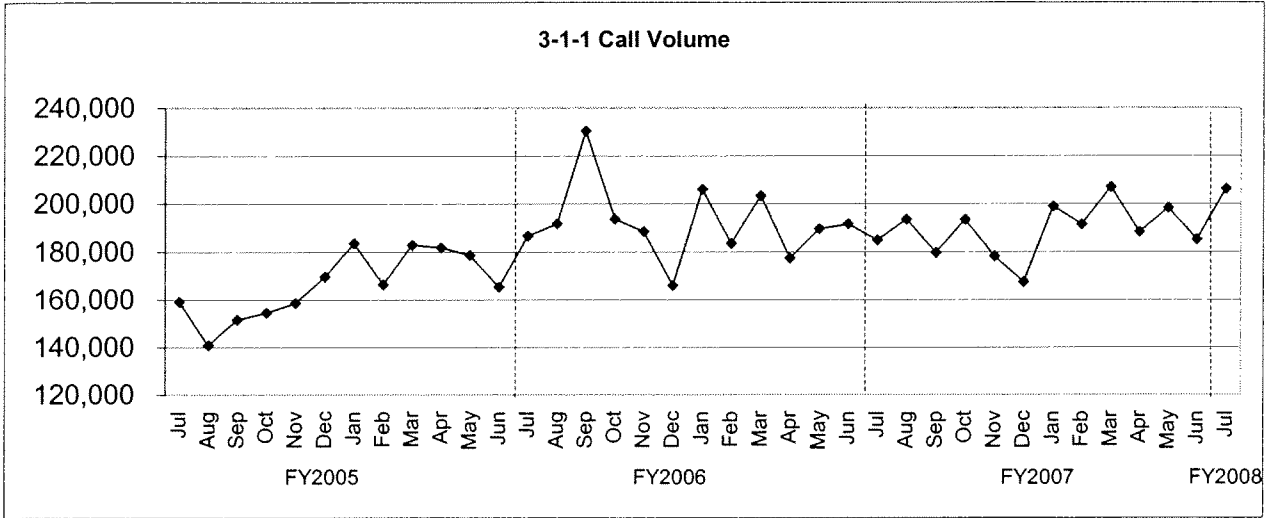
# TREND INDICATORS - AMBULANCE SERVICES



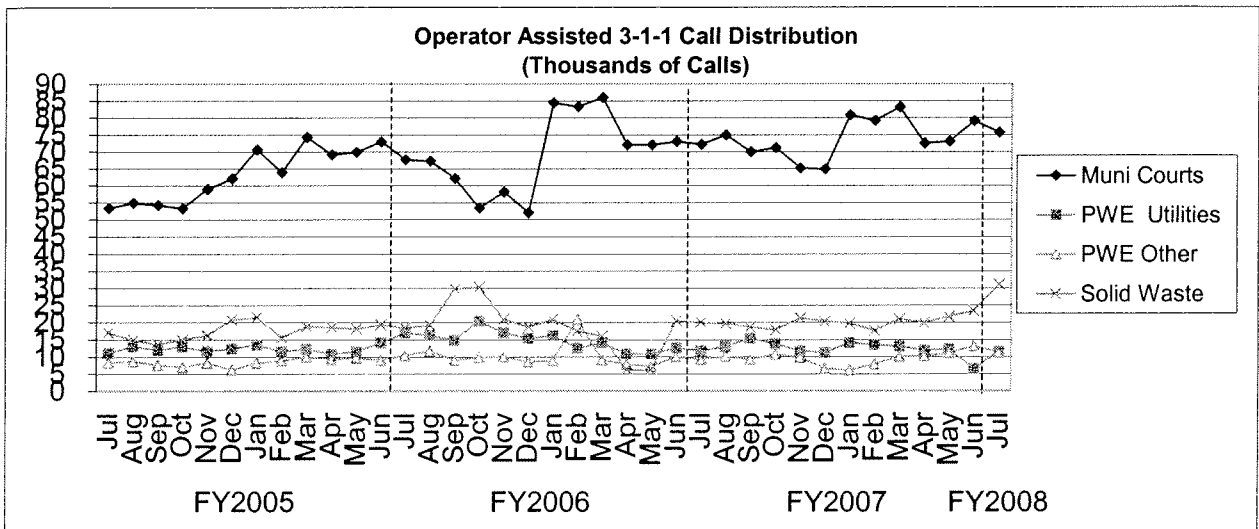
# TREND INDICATORS - MISCELLANEOUS



### TREND INDICATORS - MISCELLANEOUS



3-1-1 became fully operational in August 2001



4 largest users of operator assisted 3-1-1 calls.