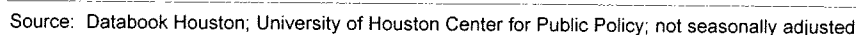
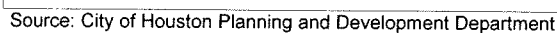
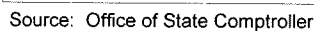
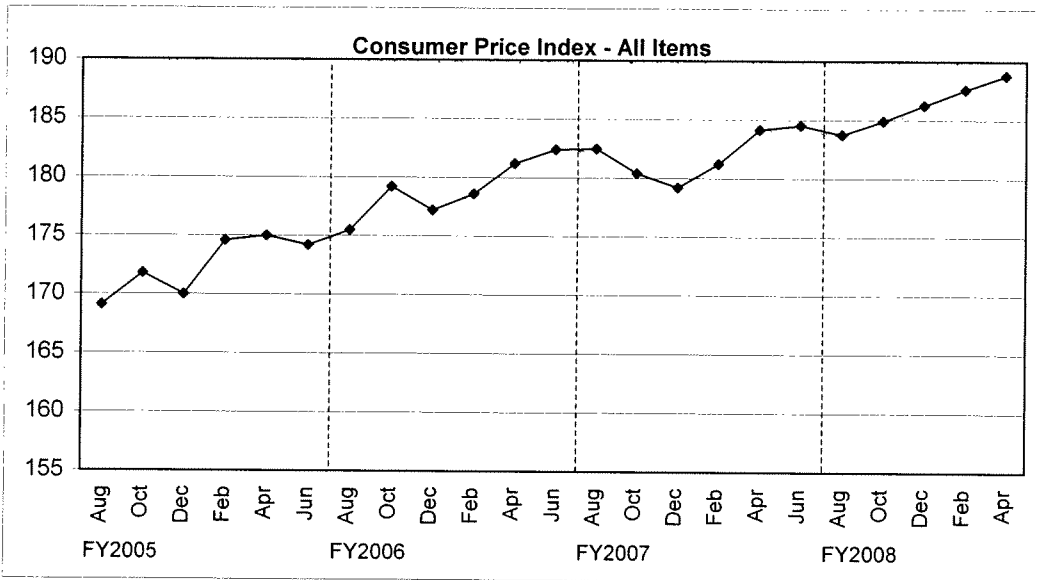


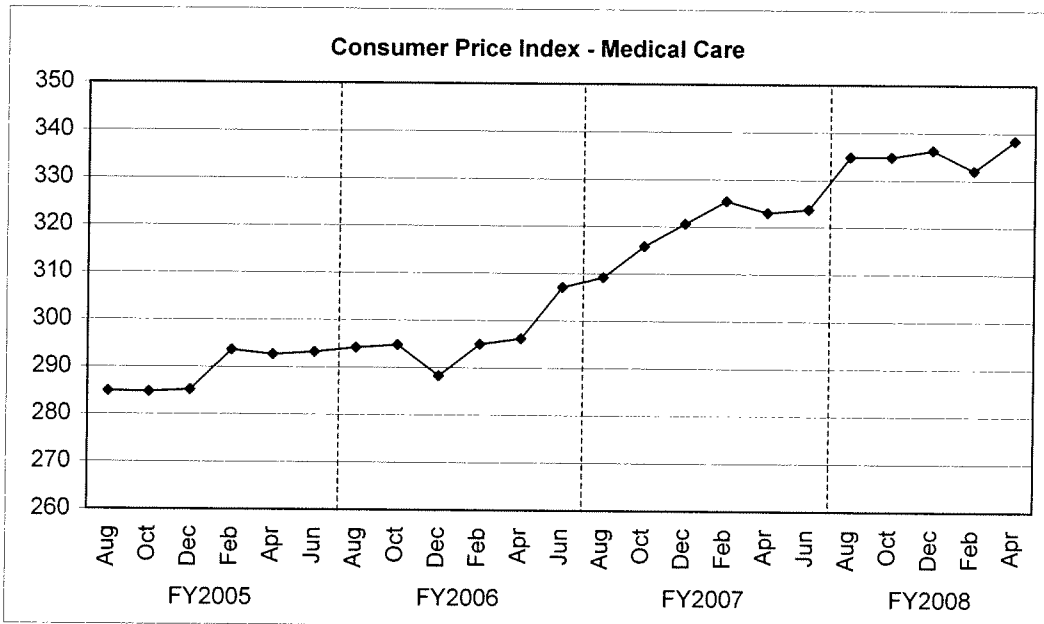
### Sales Tax - Three-Month Rolling Average



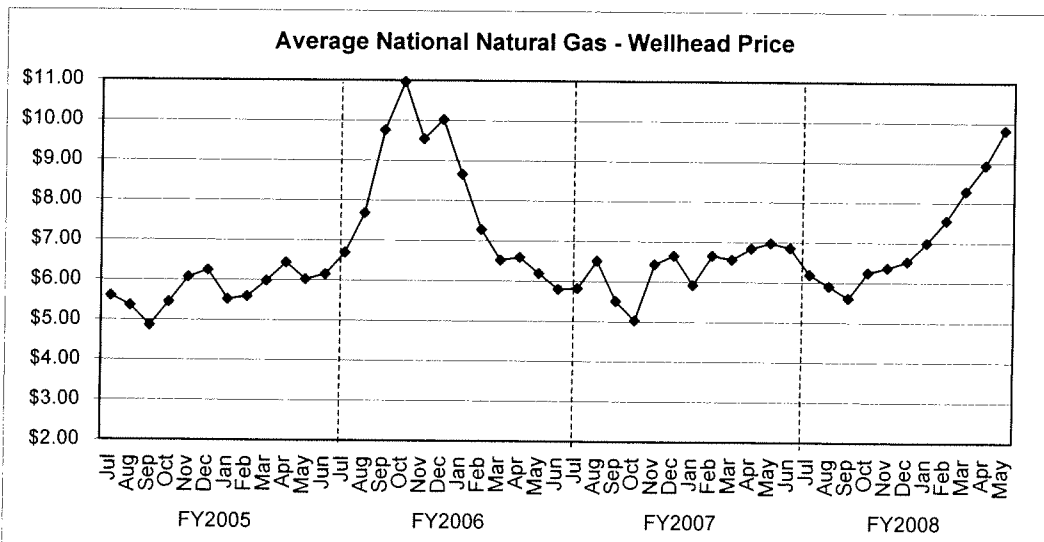
## TREND INDICATORS - LOCAL ECONOMY



Source: Bureau of Labor Statistics - Houston, Galveston, Brazoria TX

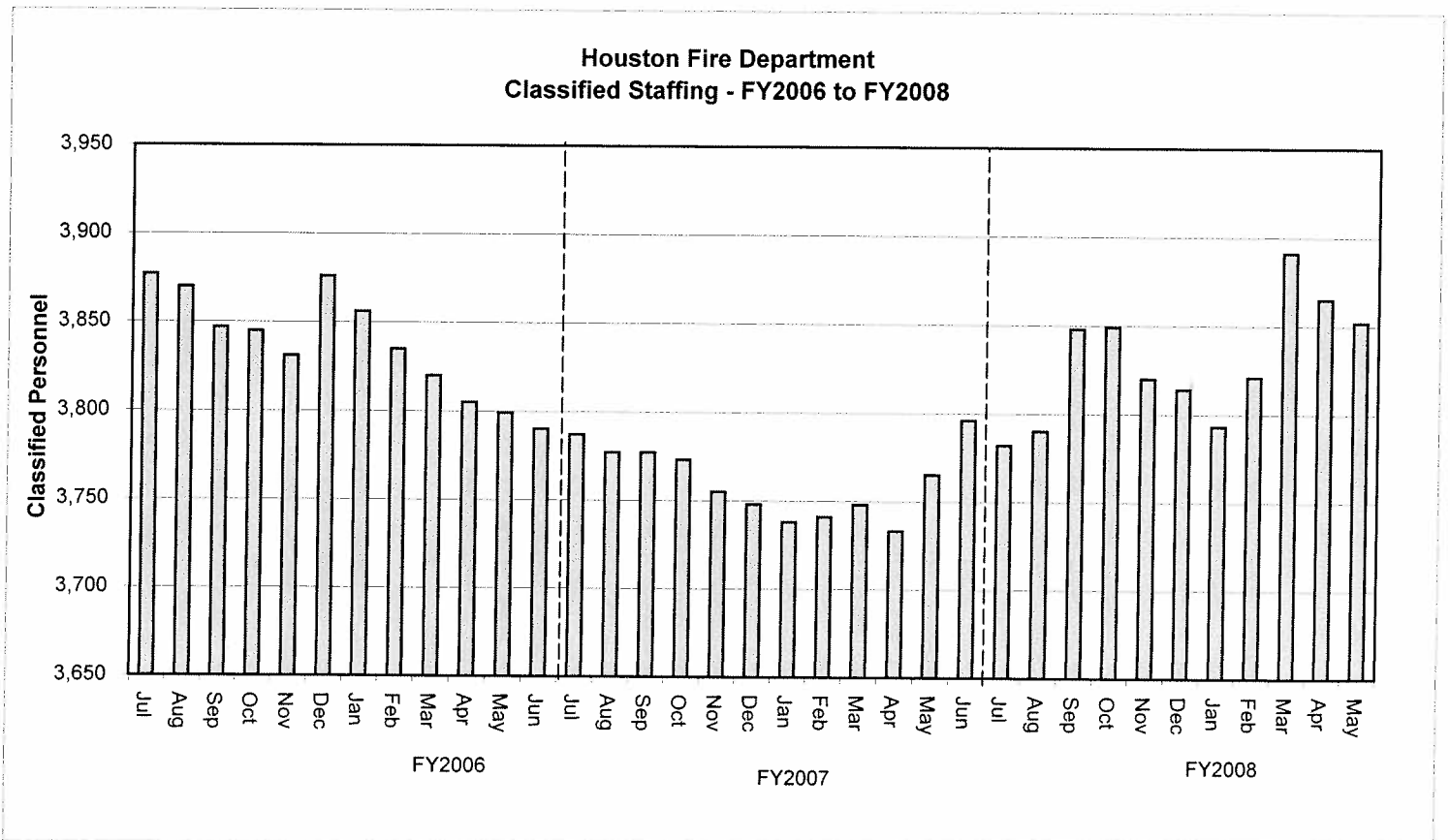
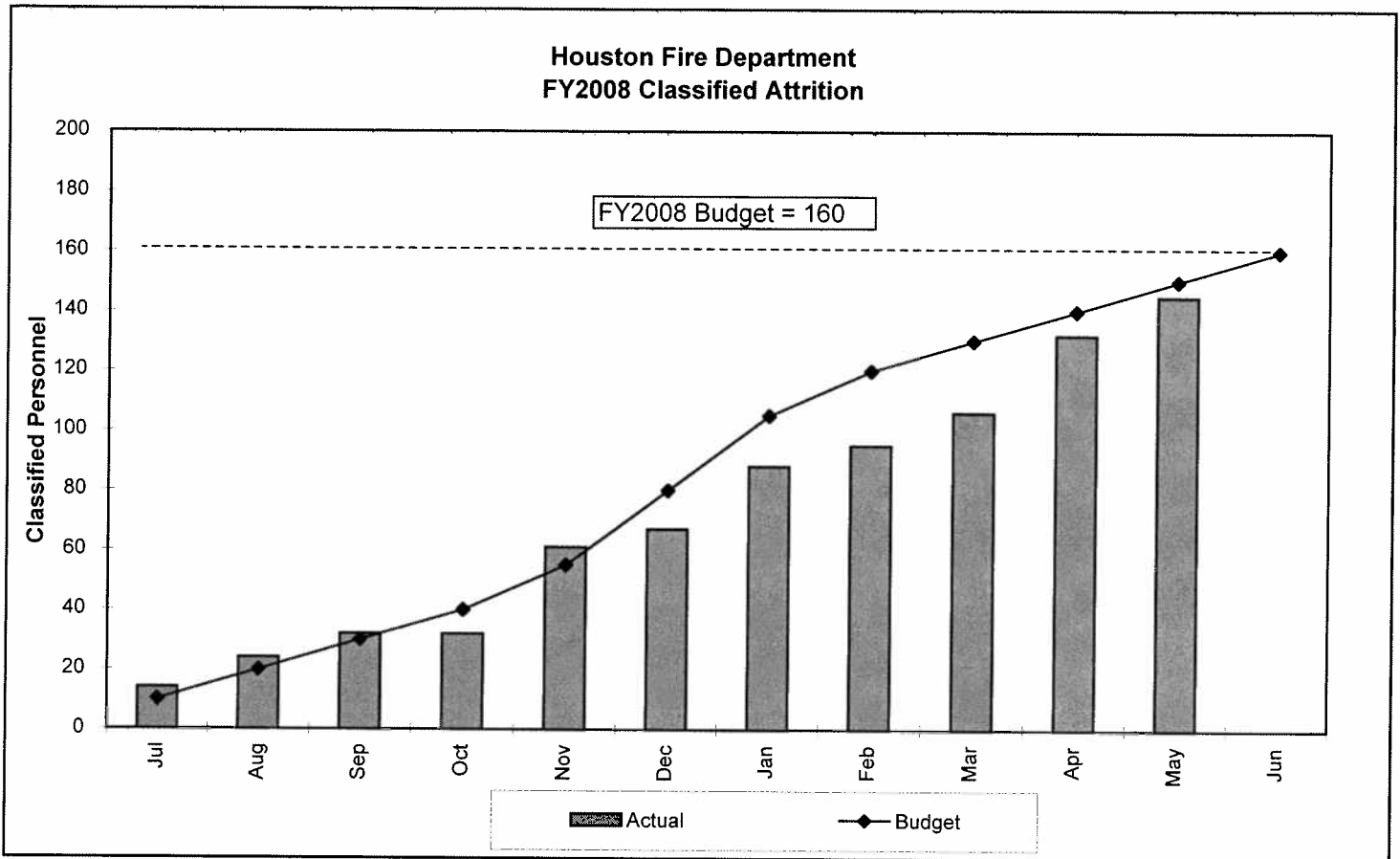


Source: Bureau of Labor Statistics - Houston, Galveston, Brazoria TX



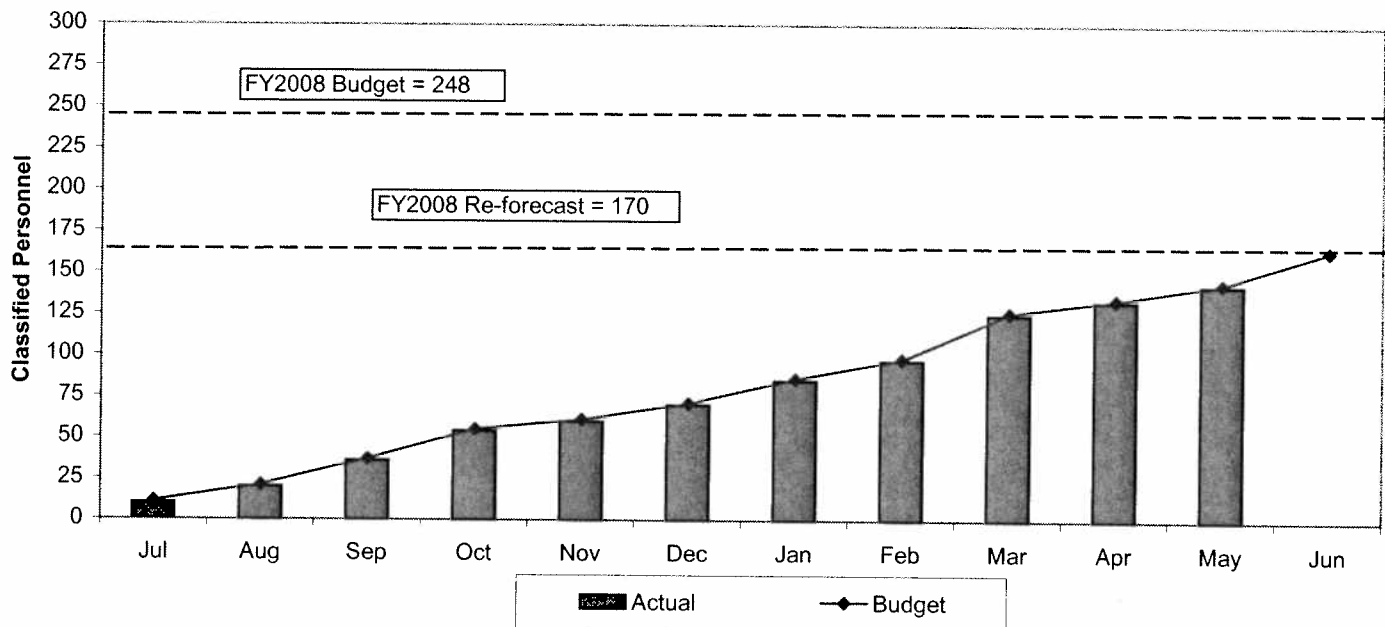
Source: Energy Information Administration/Natural Gas Monthly

## TREND INDICATORS - RETIREMENTS

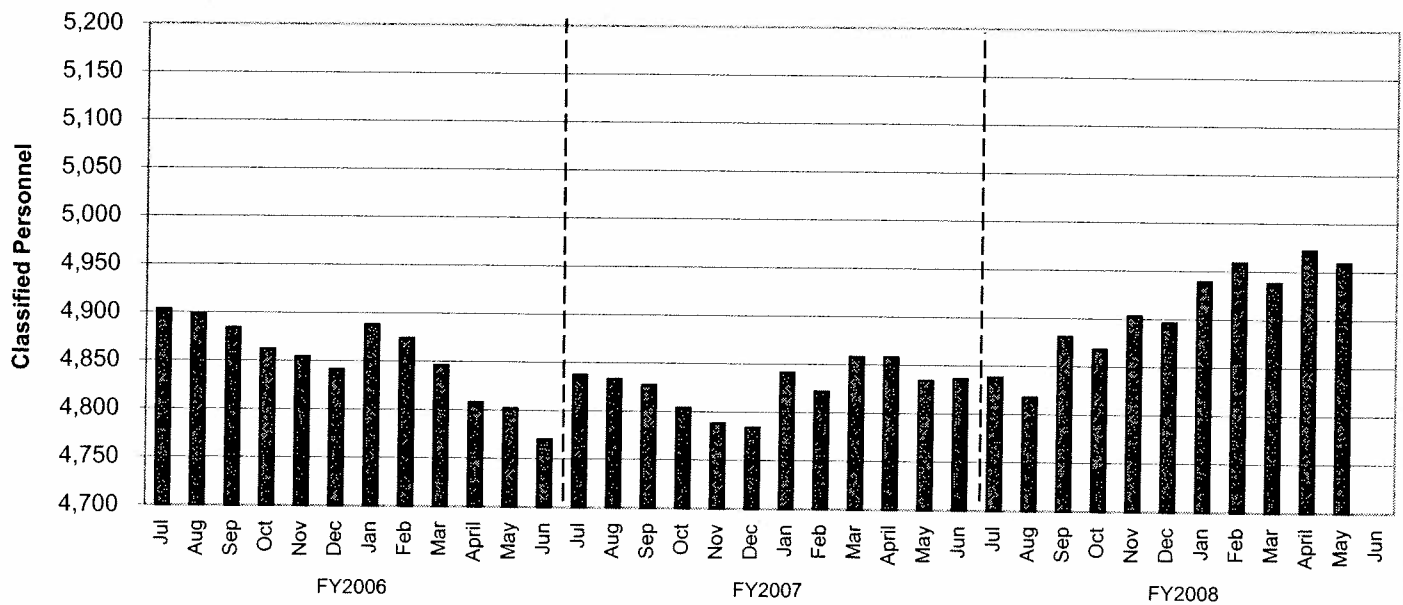


## TREND INDICATORS - HIRING AND RETIREMENTS

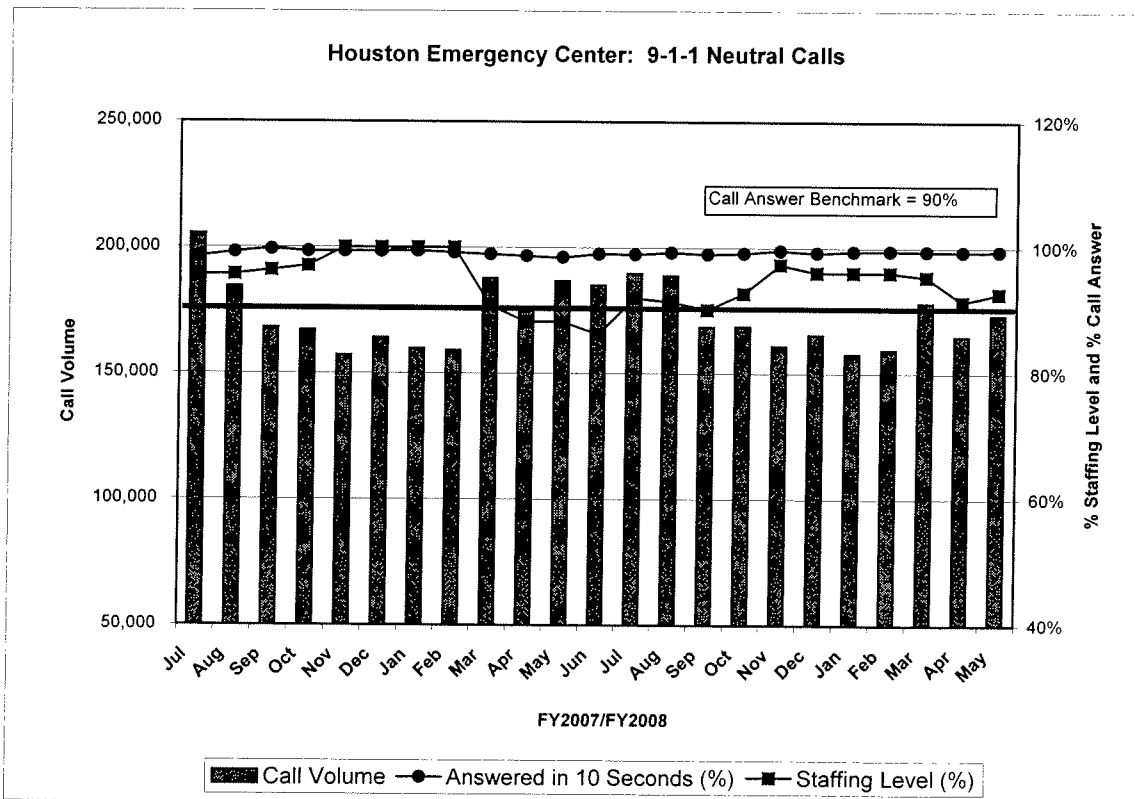
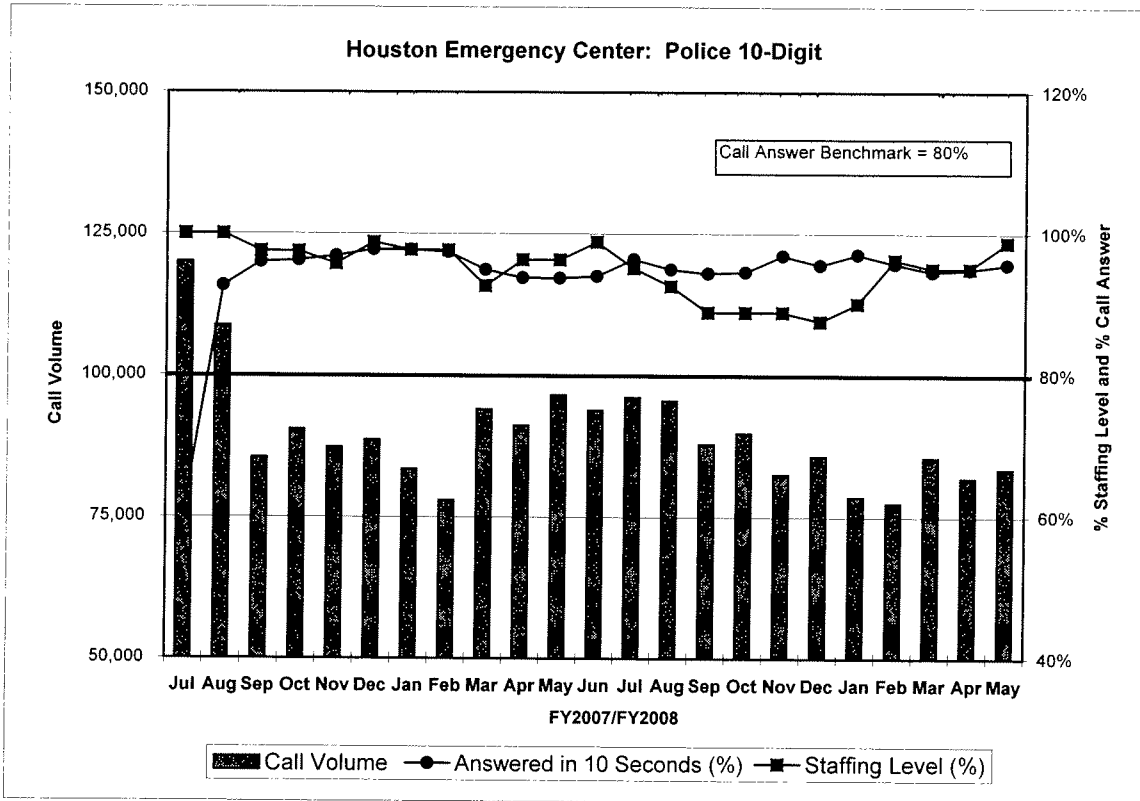
**Houston Police Department  
FY2008 Classified Attrition**



**Houston Police Department  
Classified Staffing - FY2006 to FY2008**

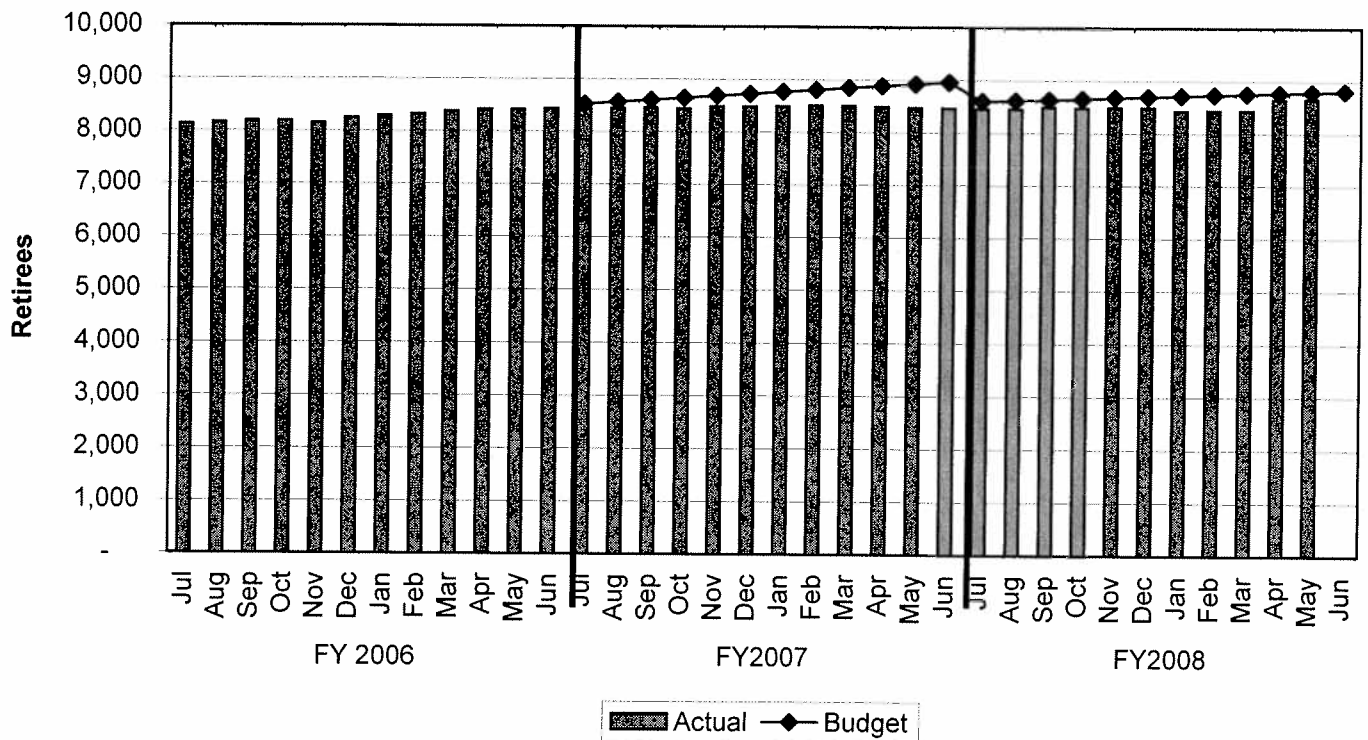


## TREND INDICATORS - HOUSTON EMERGENCY CENTER



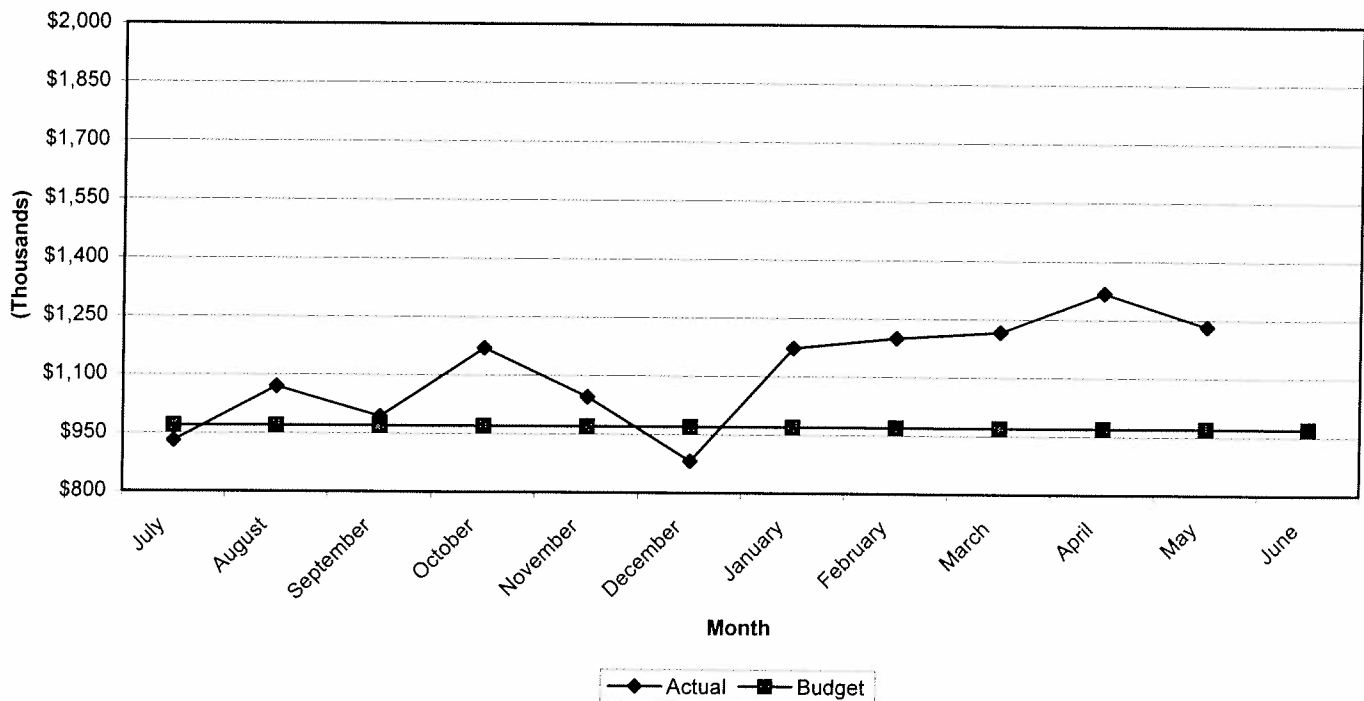
## TREND INDICATORS - RETIREMENTS

### Retirees Receiving Health Benefits

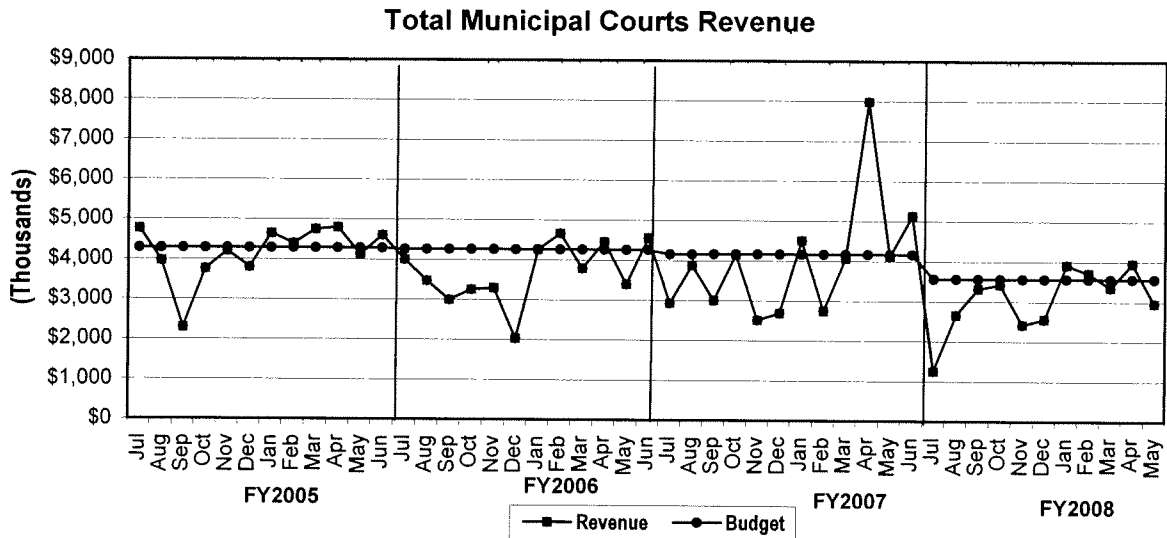


## TREND INDICATORS - PARKING MANAGEMENT

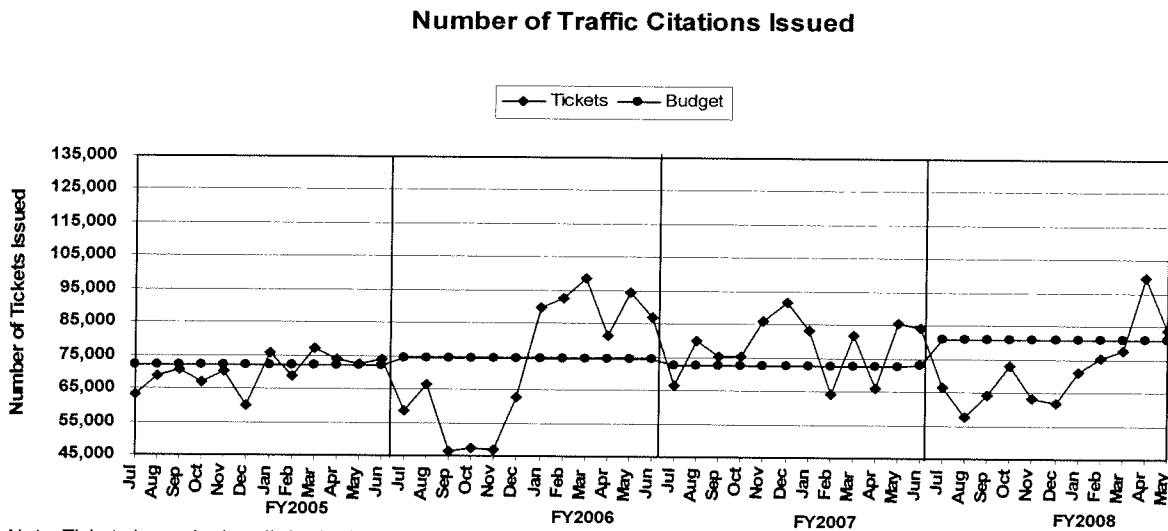
### Total Parking Management Revenue



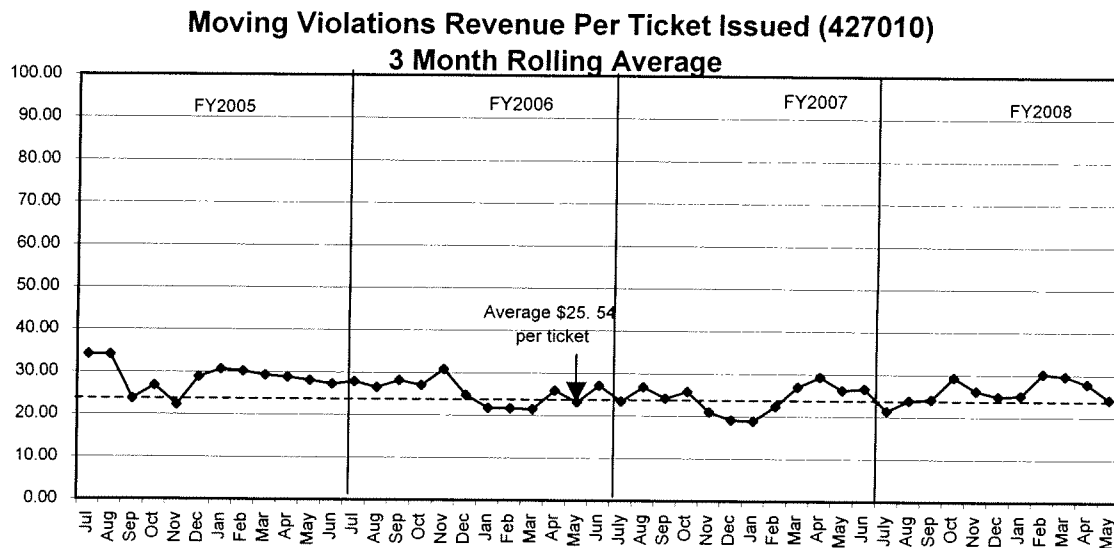
## TREND INDICATORS - MUNICIPAL COURTS



FY2008 does not include Parking Revenue which is now reported in the Parking Management Fund.

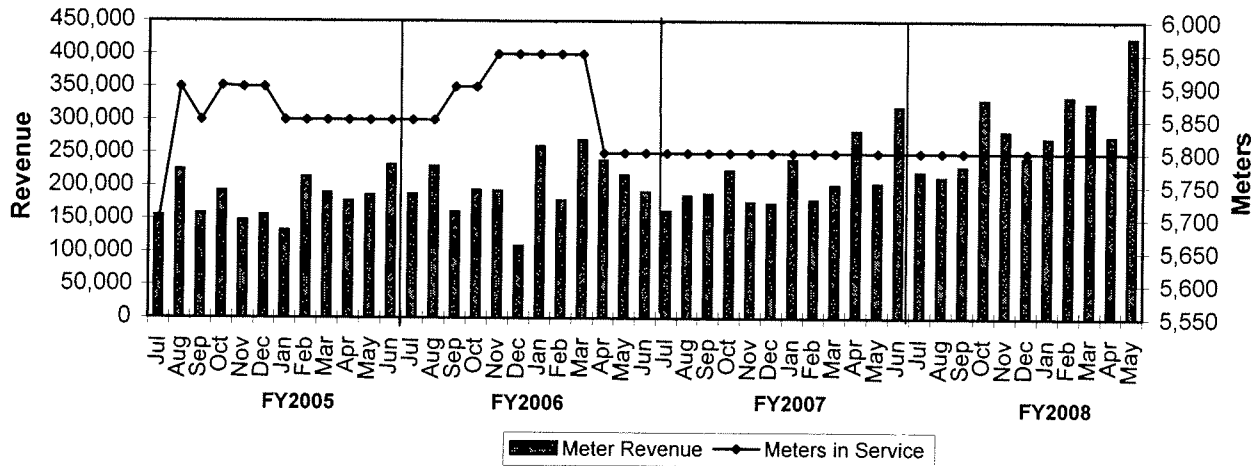


Note: Tickets issued primarily by the Houston Police Department.

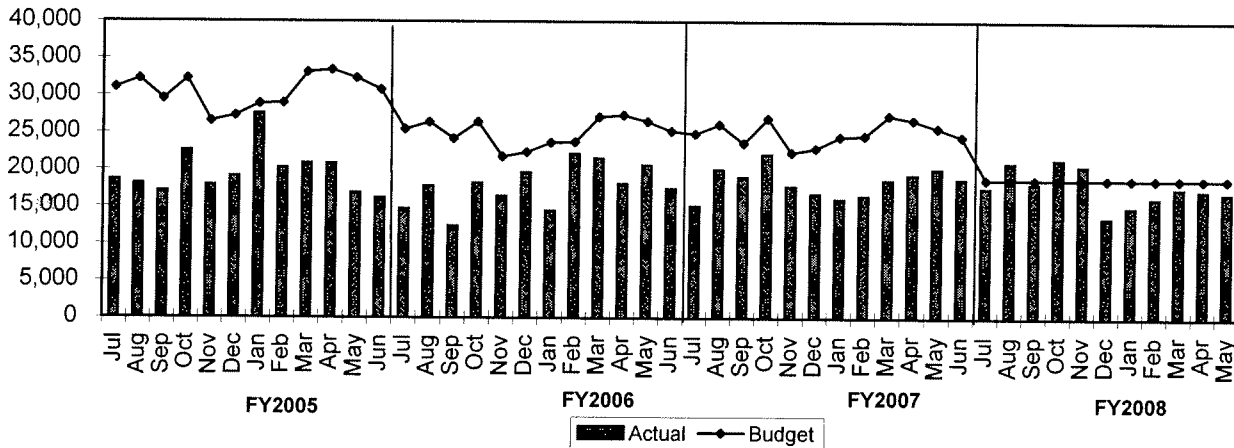


## TREND INDICATORS - MUNICIPAL COURTS

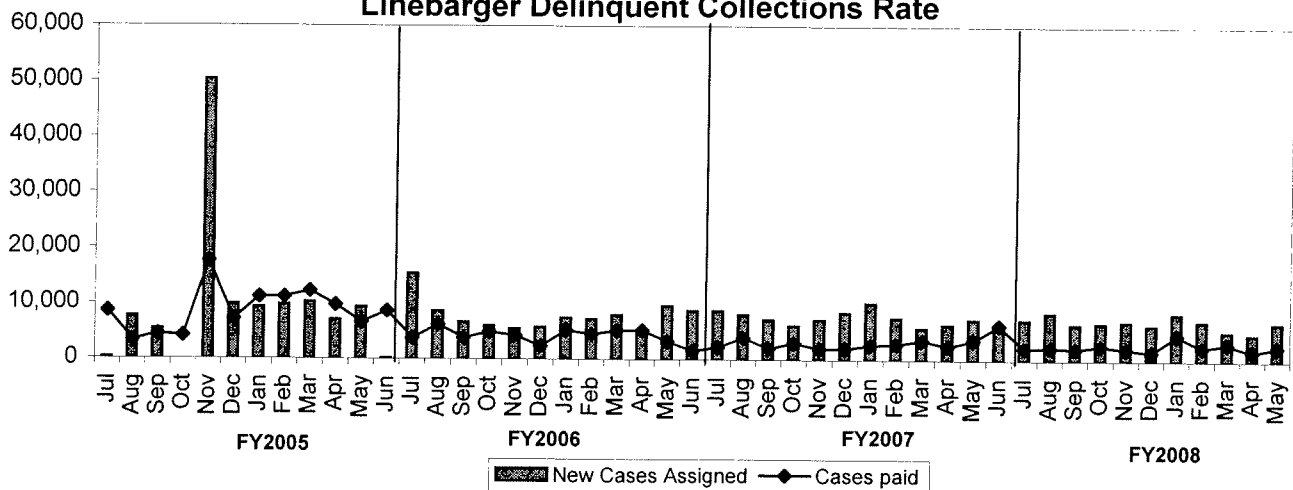
### Meter Revenue vs # Meters in Service



### Parking Violations vs Budget



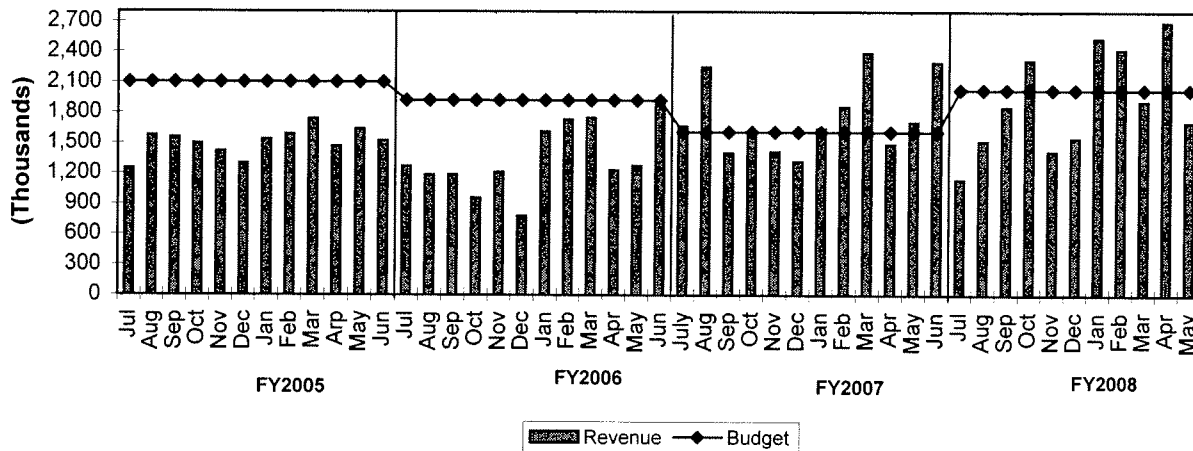
### Parking Meter Violations Linebarger Delinquent Collections Rate



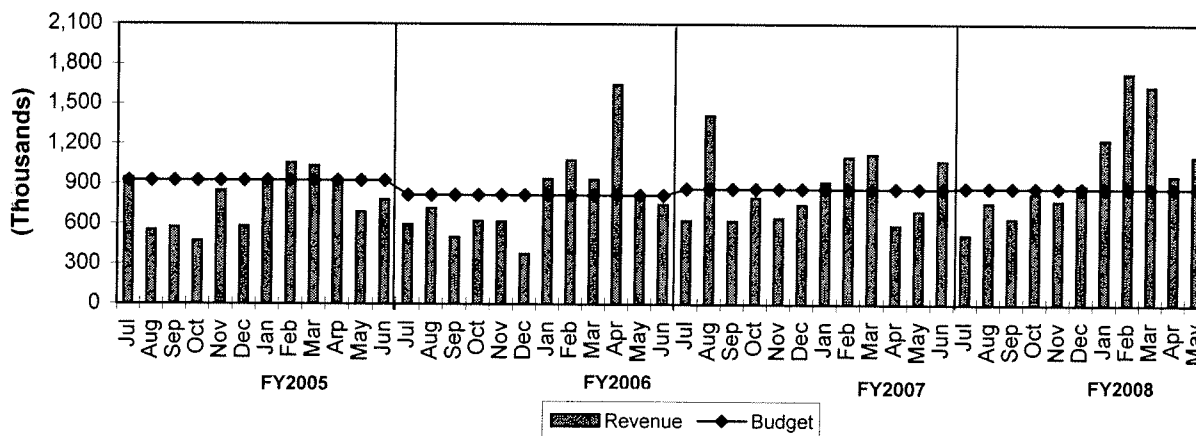


## TREND INDICATORS - MUNICIPAL COURTS

### Moving Violations Collections vs Budget

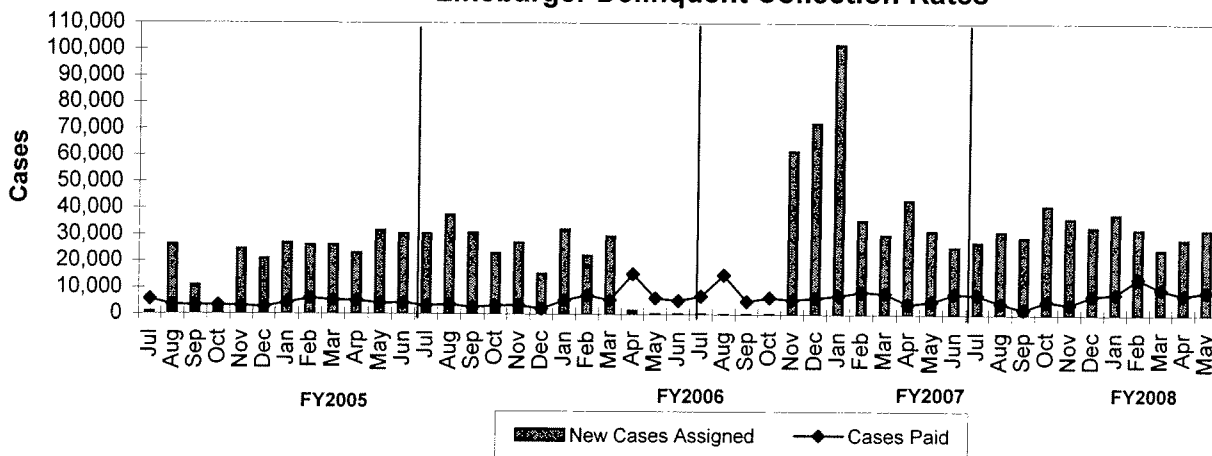


### Total Delinquent Collections vs Budget\*



\*Net of fees and expenses paid to Linebarger

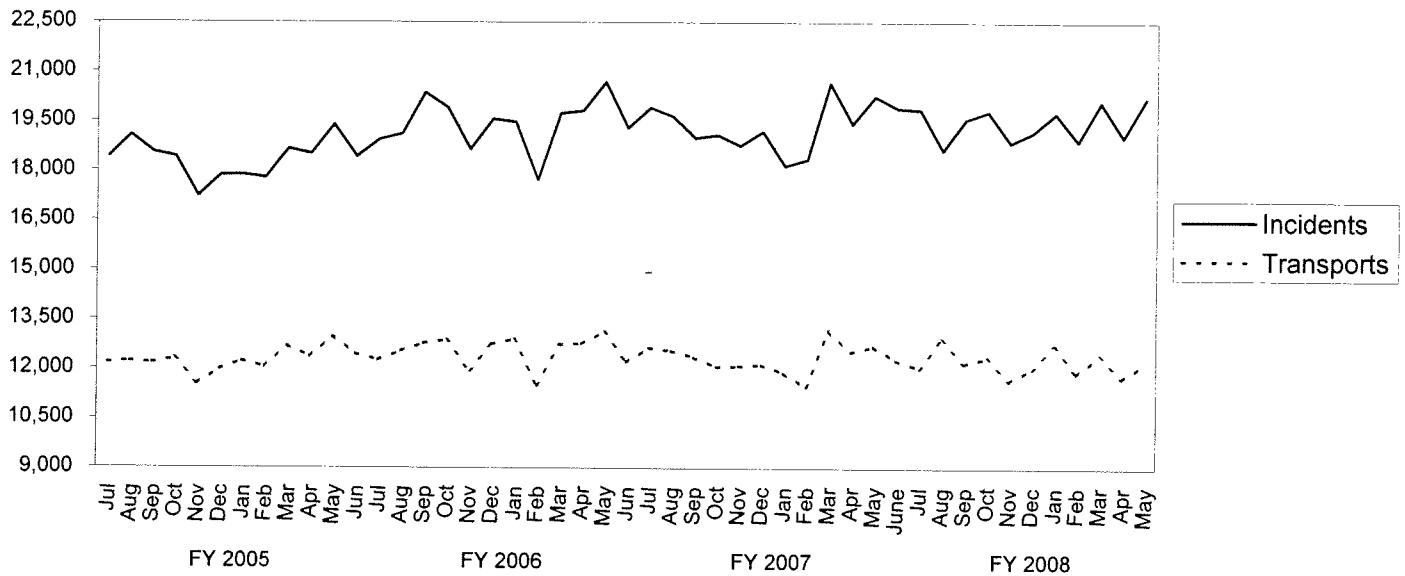
### Traffic, Non-Traffic & Failure to Appear Linebarger Delinquent Collection Rates



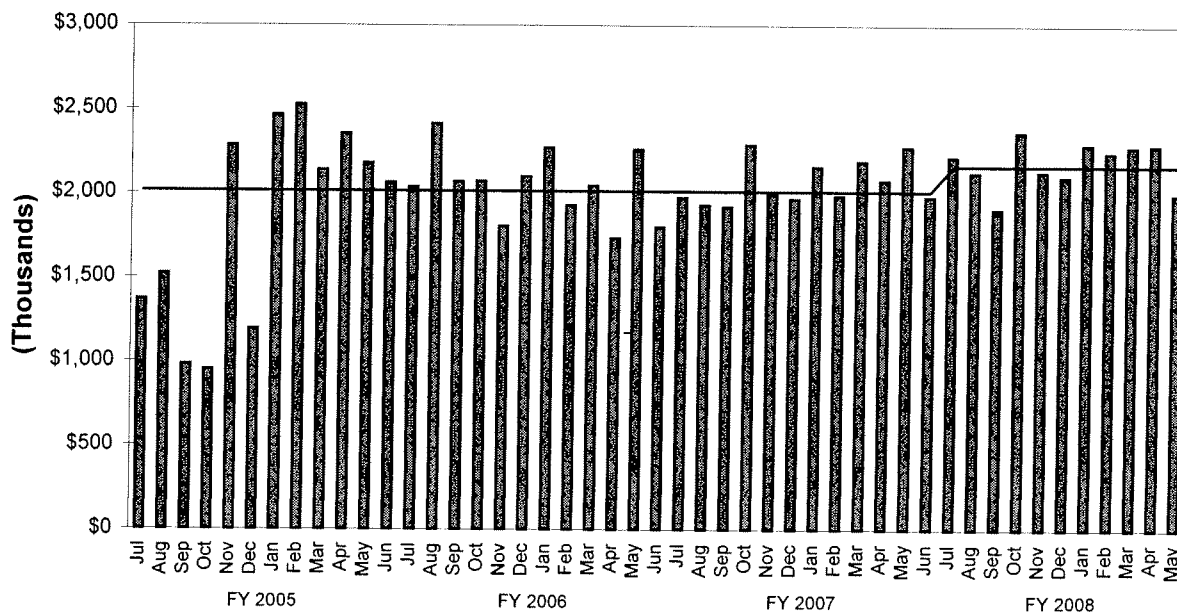
\*Excludes Delinquent Parking Collections

## TREND INDICATORS - AMBULANCE SERVICES

## EMS Incidents and Transports



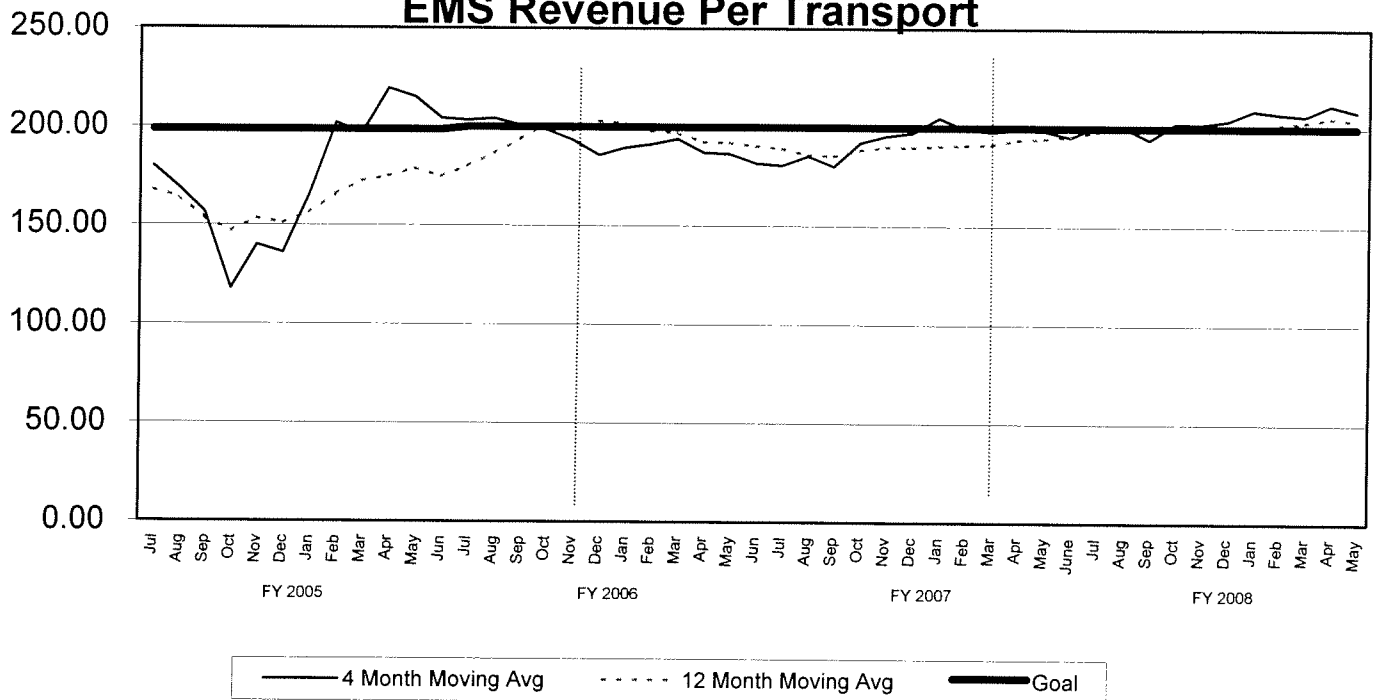
### EMS Revenue (Net Collections \*\*)



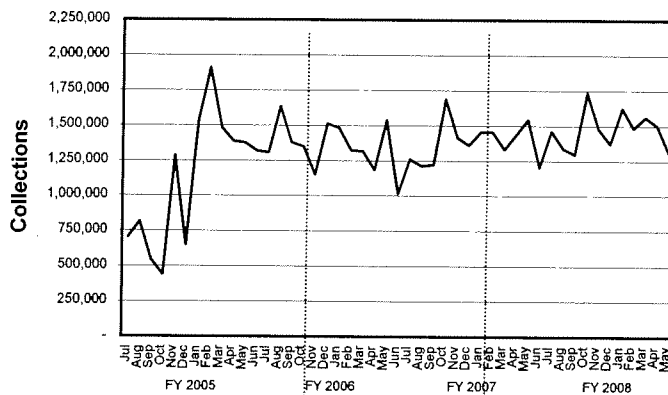
**\*\* The net collections for May 2008 were computed using a 12-month average of the Contractor's Invoice**

## TREND INDICATORS - AMBULANCE SERVICES

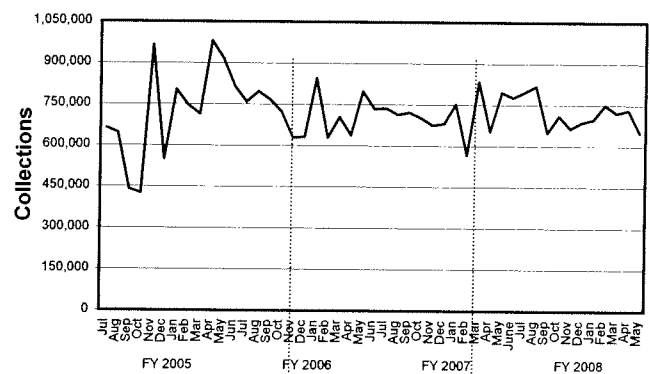
### 4 Month and 12 Month Moving Average EMS Revenue Per Transport



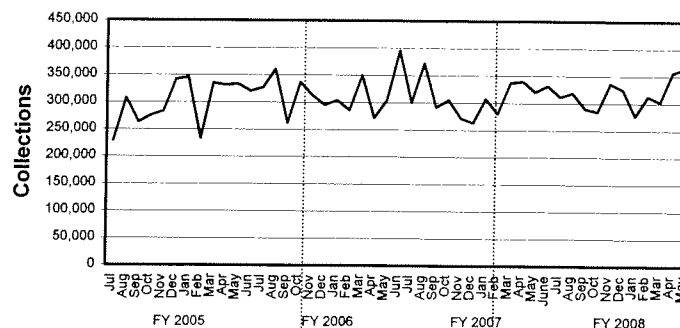
### EMS - Gross Medicare/Caid Revenue



### EMS - Gross Private Insurance Revenue

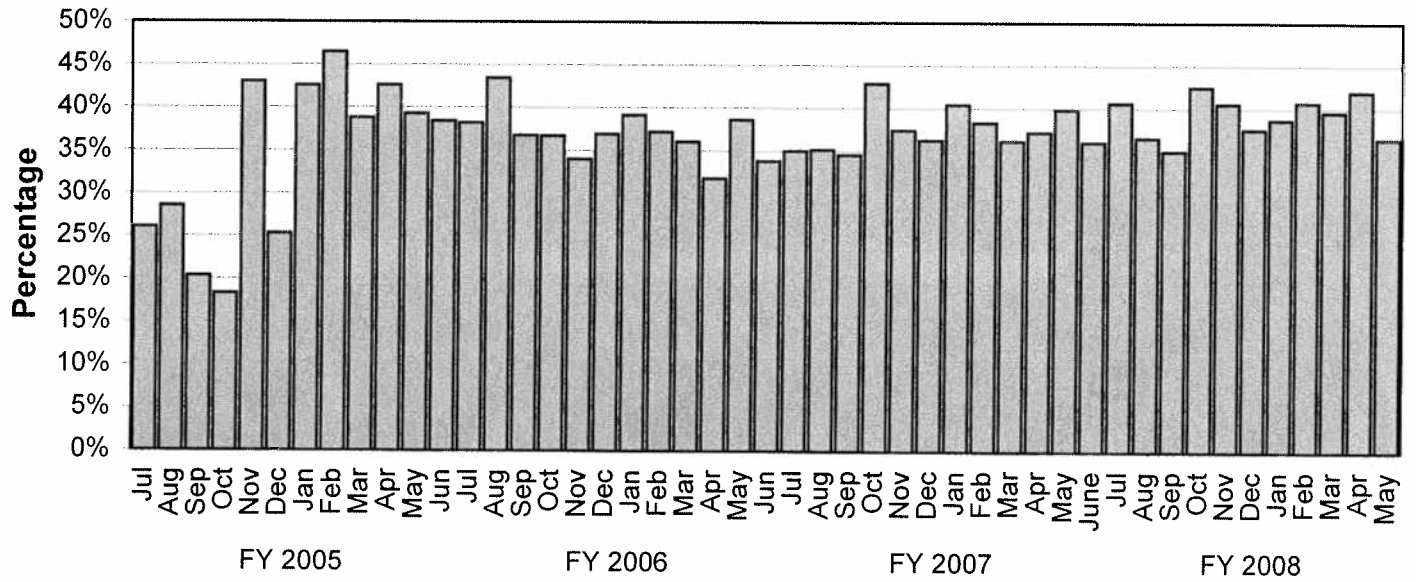


### EMS - Gross Self-Pay Revenue

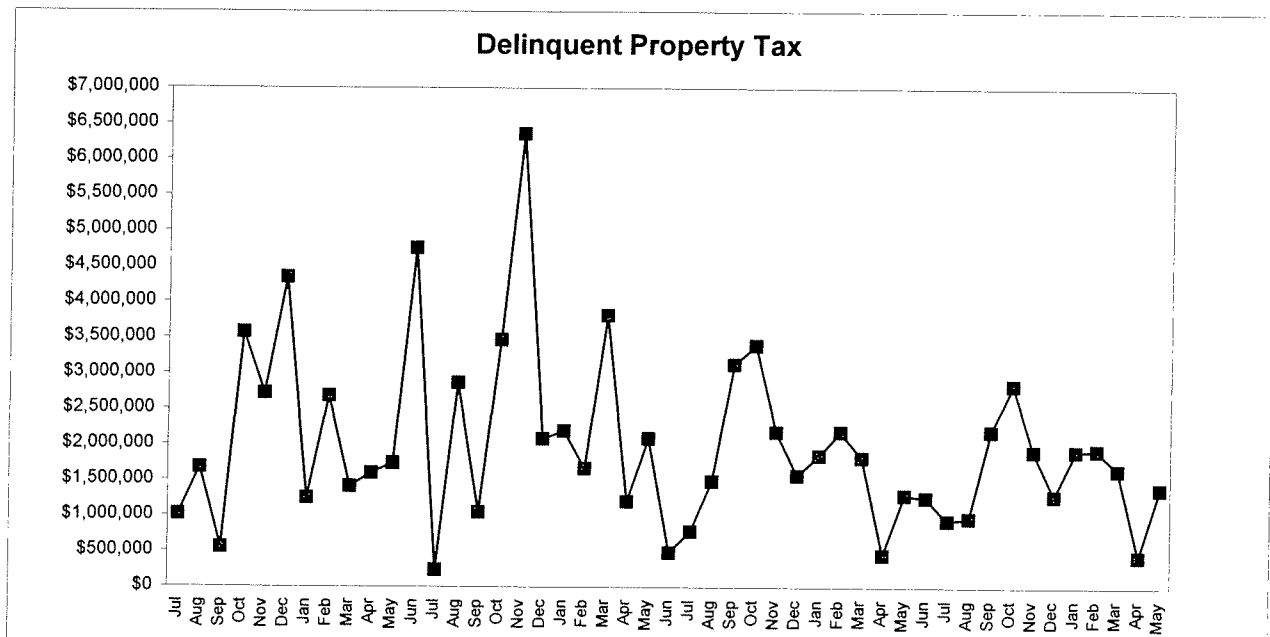
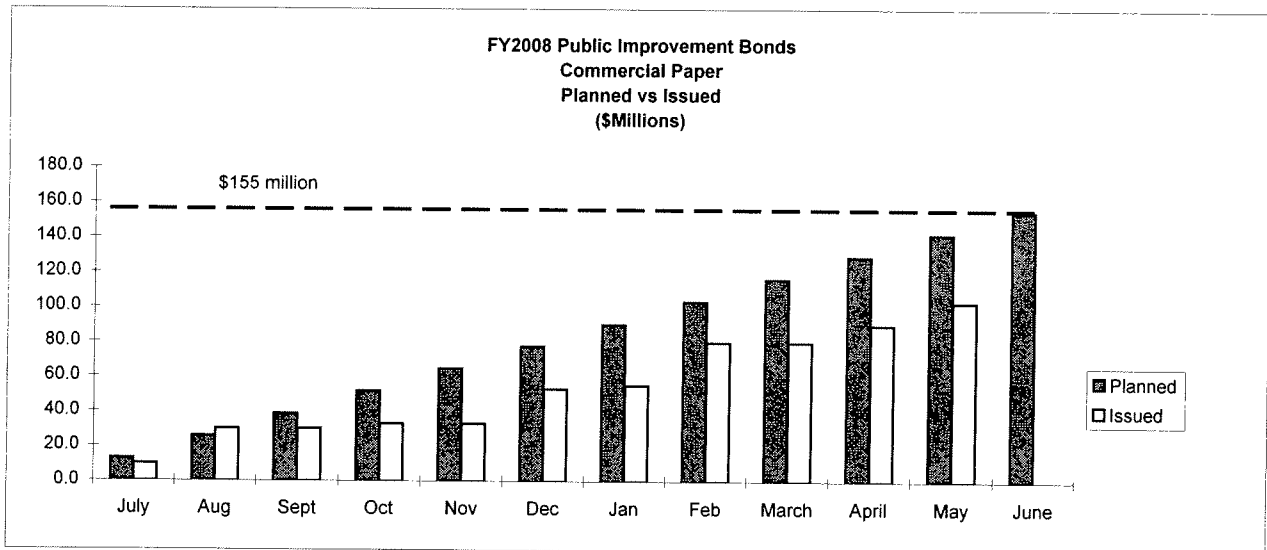
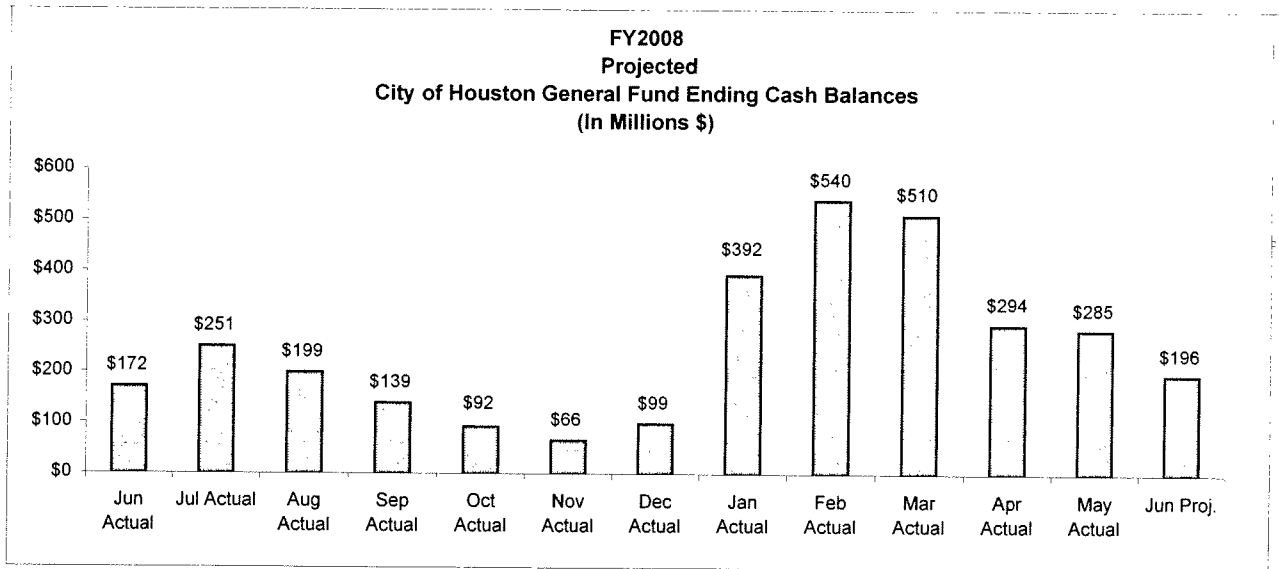


## TREND INDICATORS - AMBULANCE SERVICES

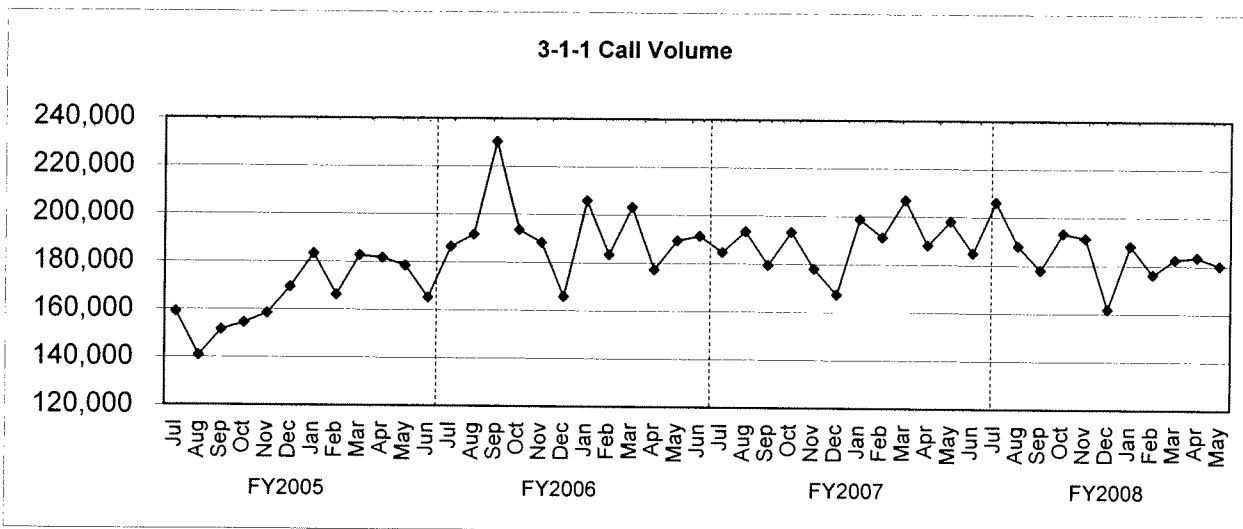
### EMS - Gross Collection Percentage



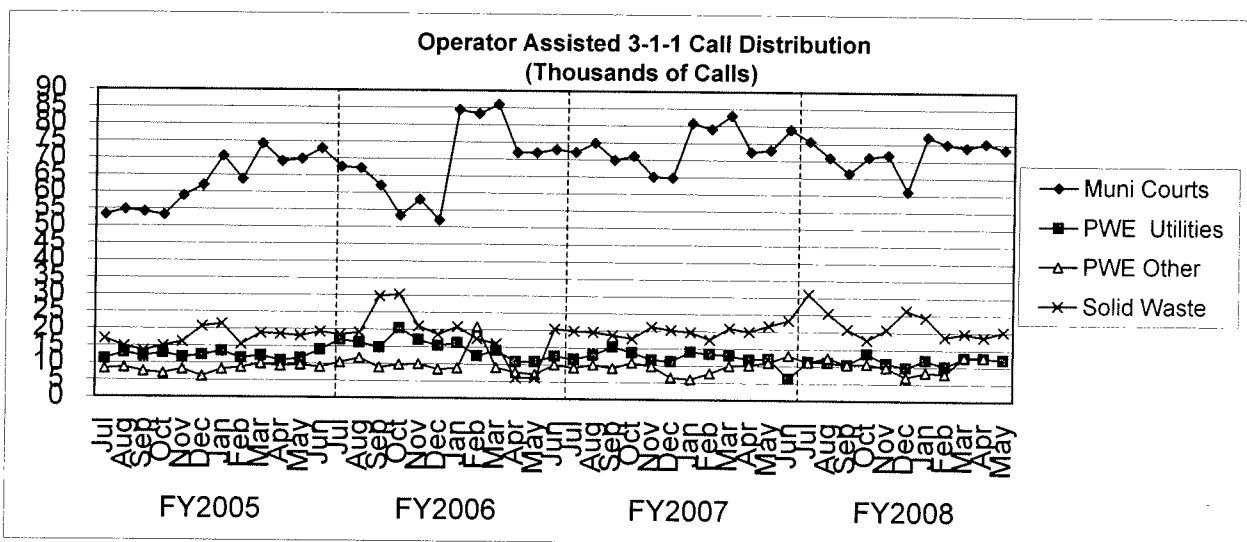
## TREND INDICATORS - MISCELLANEOUS



## TREND INDICATORS - MISCELLANEOUS



3-1-1 became fully operational in August 2001



4 largest users of operator assisted 3-1-1 calls.