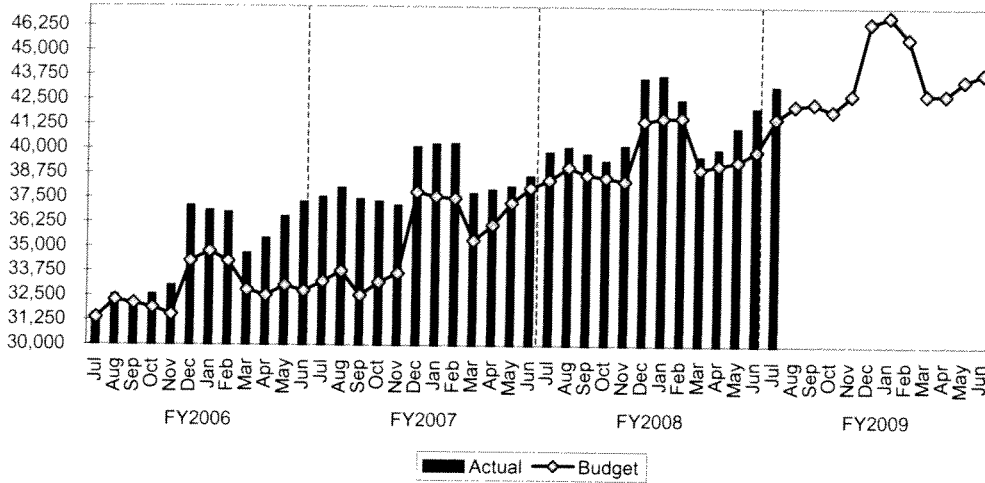


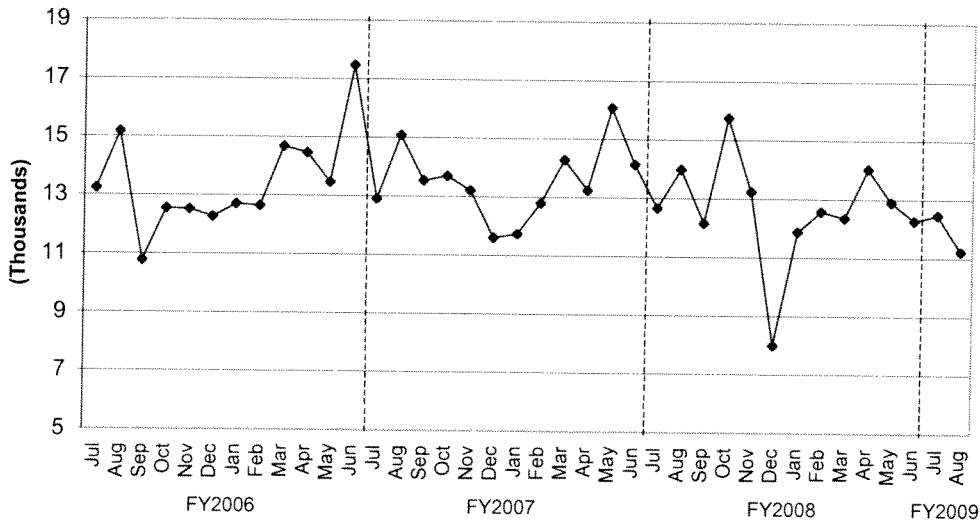
TREND INDICATORS - LOCAL ECONOMY

Sales Tax - Three-Month Rolling Average



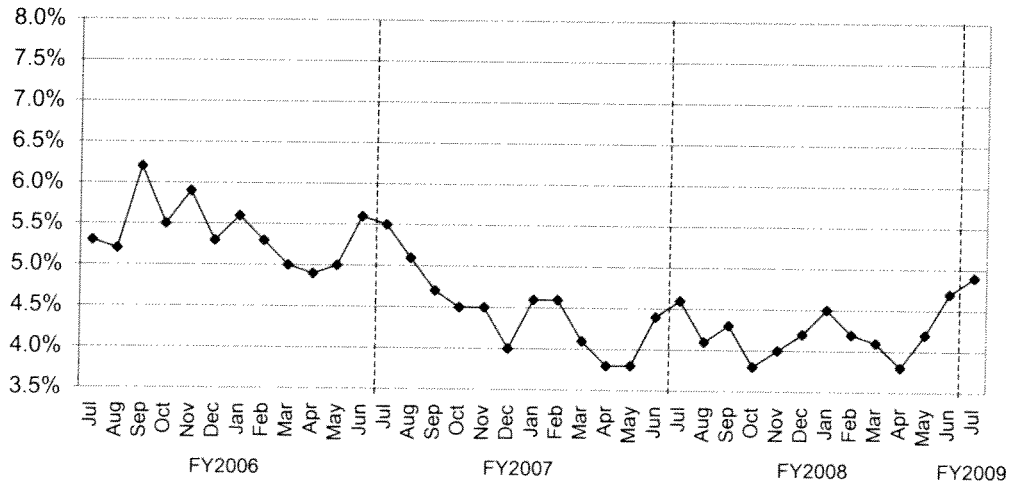
Source: Office of State Comptroller

Building Permits Issued



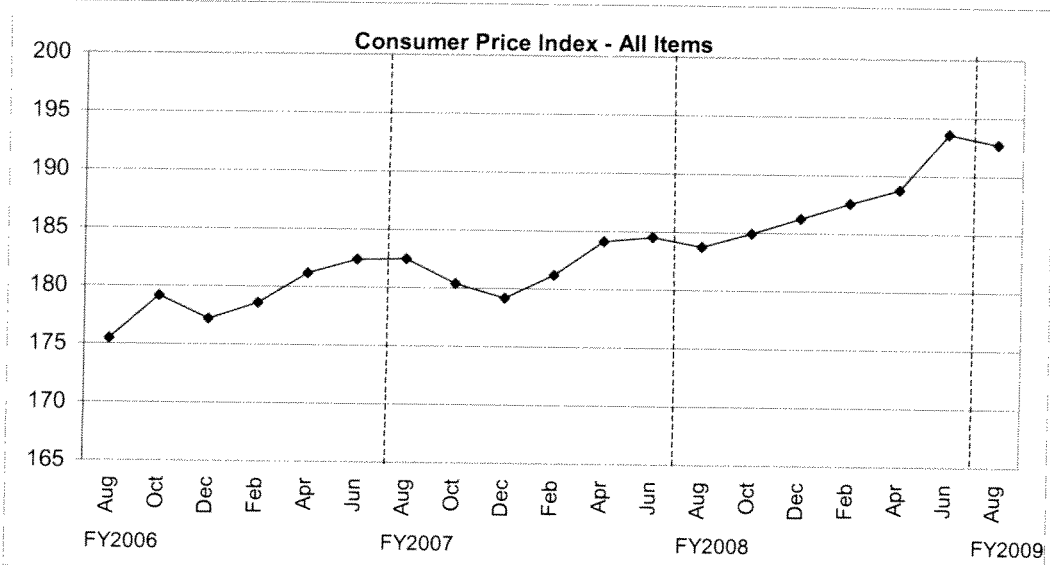
Source: City of Houston Planning and Development Department

Unemployment Rate

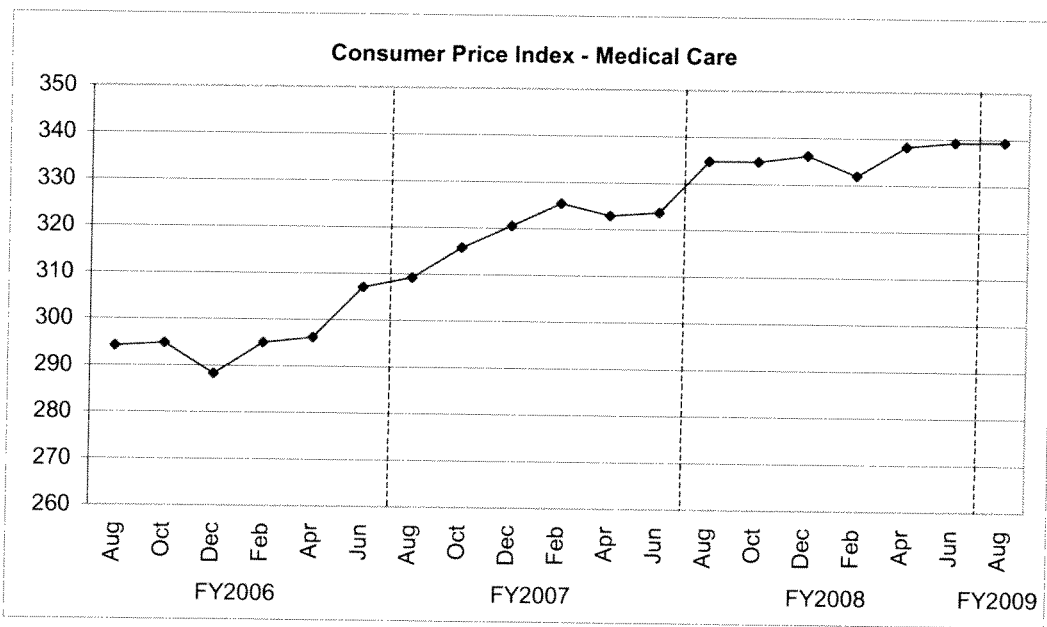


Source: Databook Houston; University of Houston Center for Public Policy; not seasonally adjusted

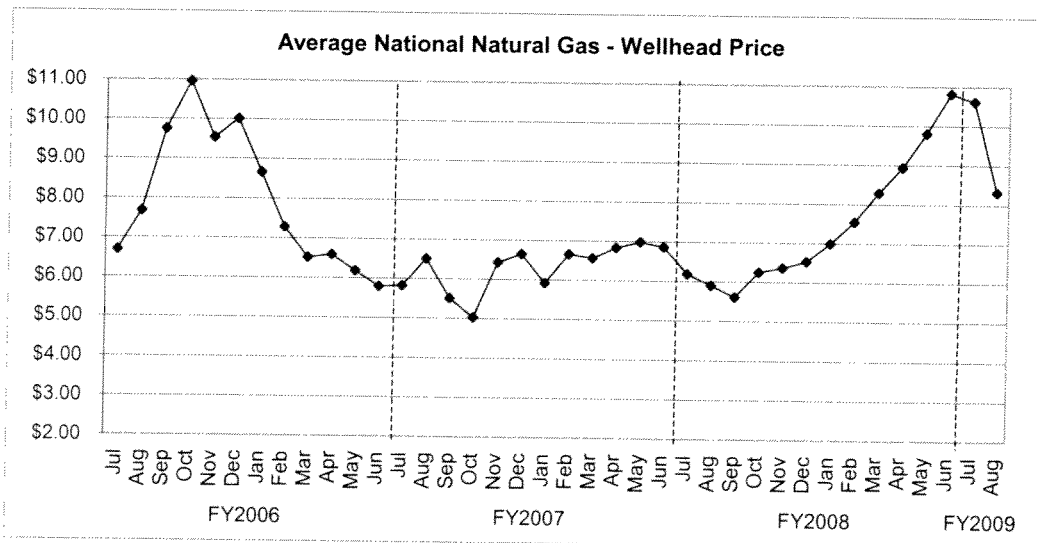
TREND INDICATORS - LOCAL ECONOMY



Source: Bureau of Labor Statistics - Houston, Galveston, Brazoria TX



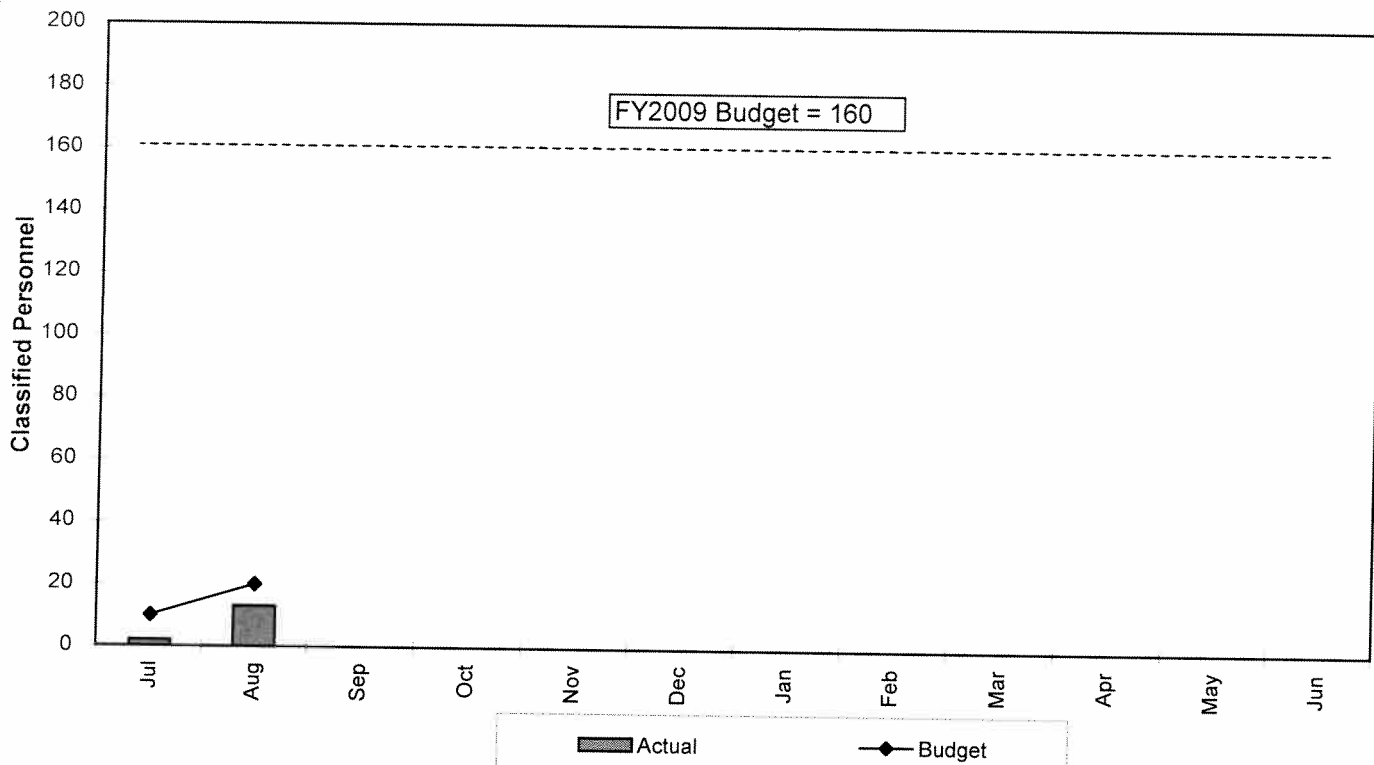
Source: Bureau of Labor Statistics - Houston, Galveston, Brazoria TX



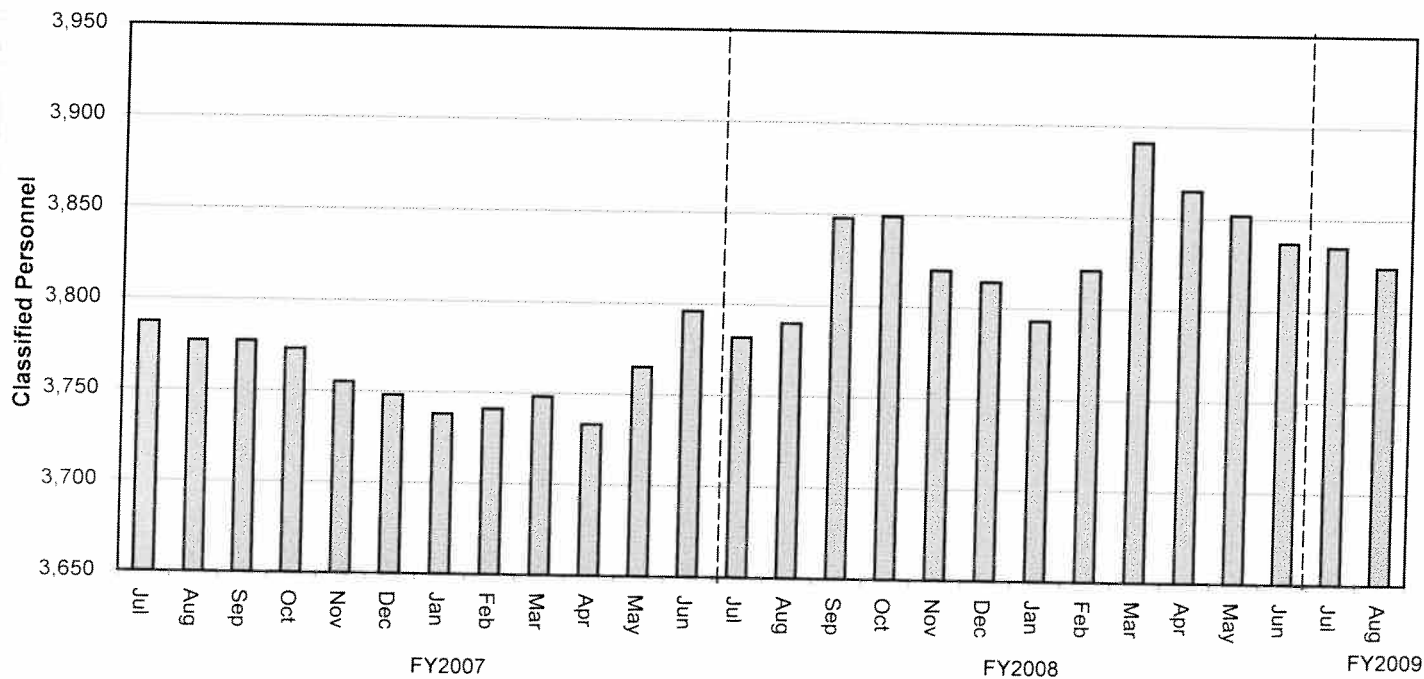
Source: Energy Information Administration/Natural Gas Monthly

TREND INDICATORS - RETIREMENTS

Houston Fire Department
FY2009 Classified Attrition

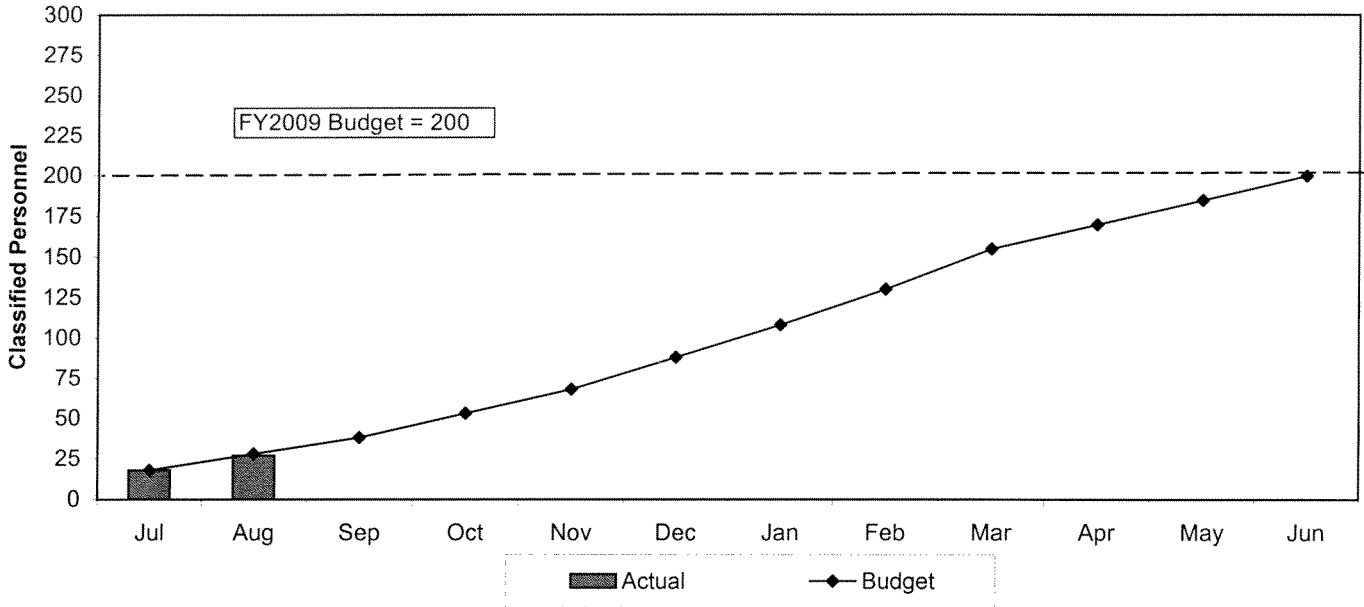


Houston Fire Department
Classified Staffing - FY2007 to FY2009

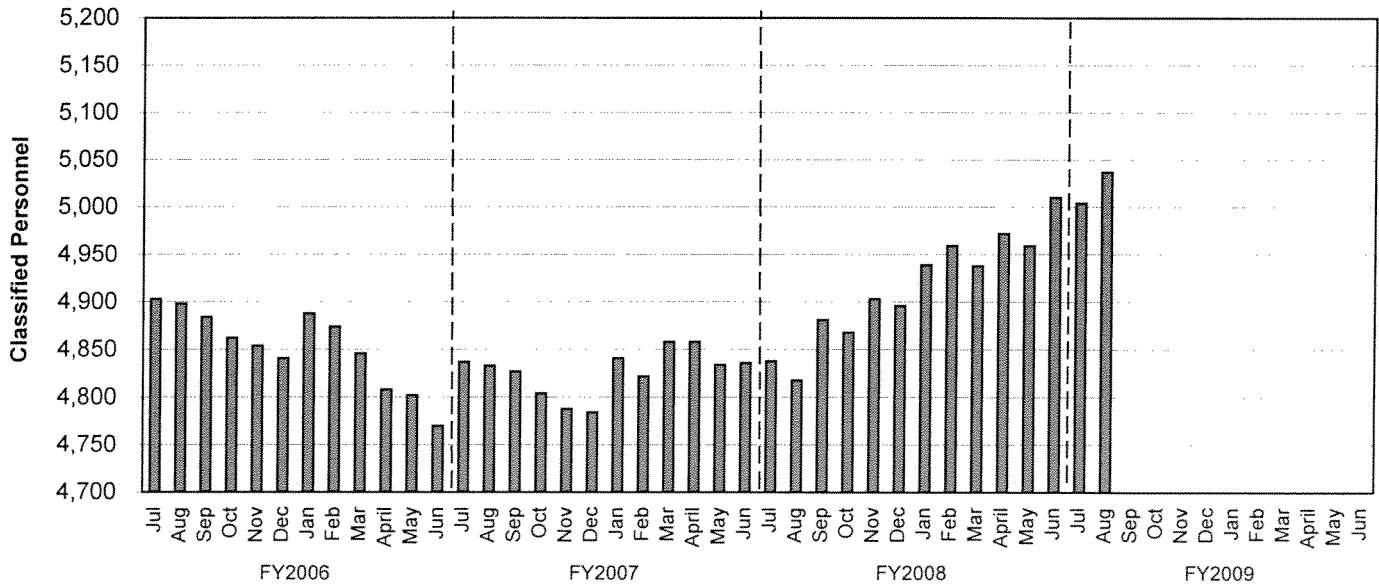


TREND INDICATORS - HIRING AND RETIREMENTS

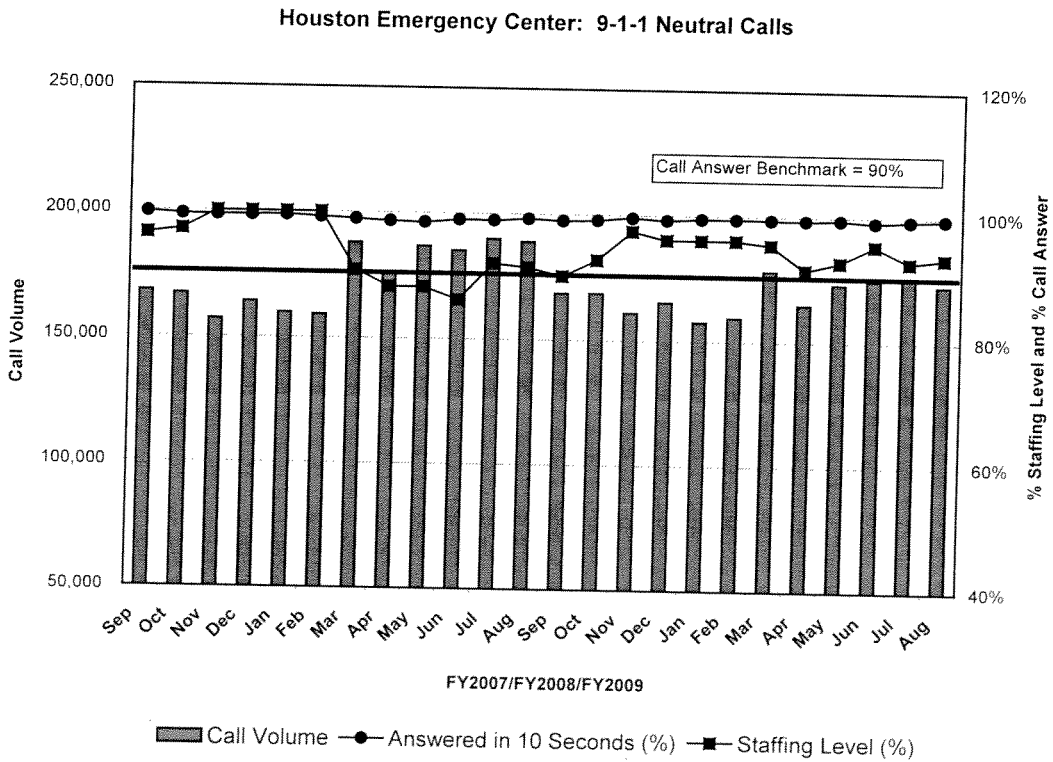
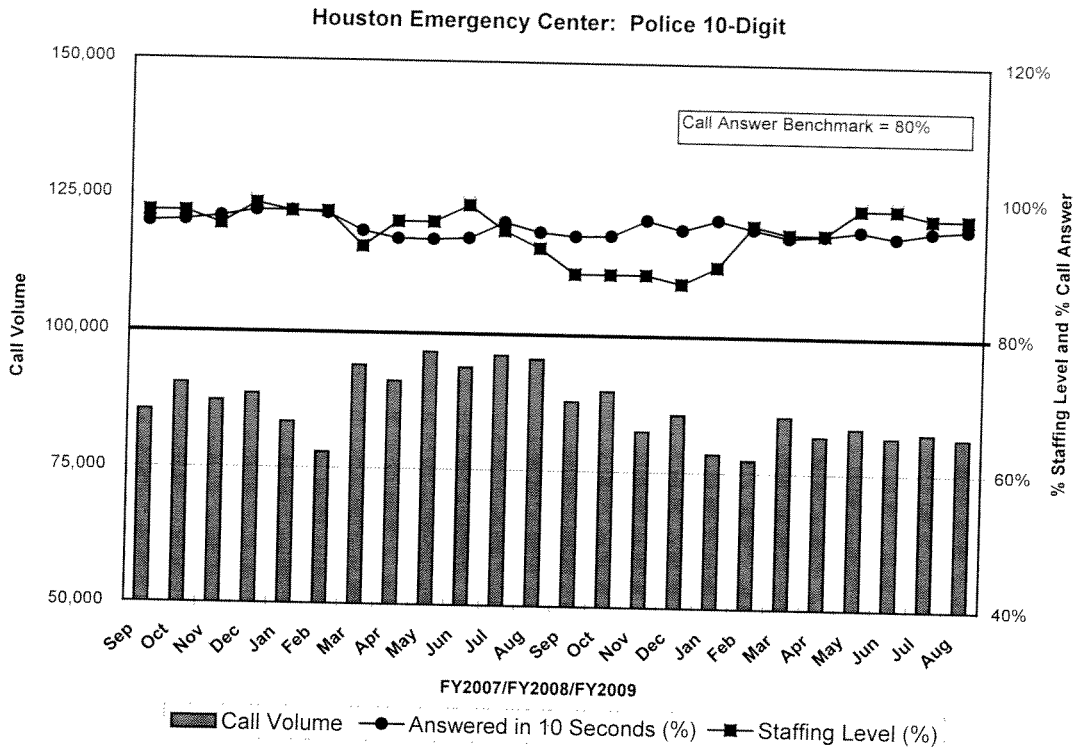
Houston Police Department FY2009 Classified Attrition



Houston Police Department Classified Staffing - FY2006 to FY2009

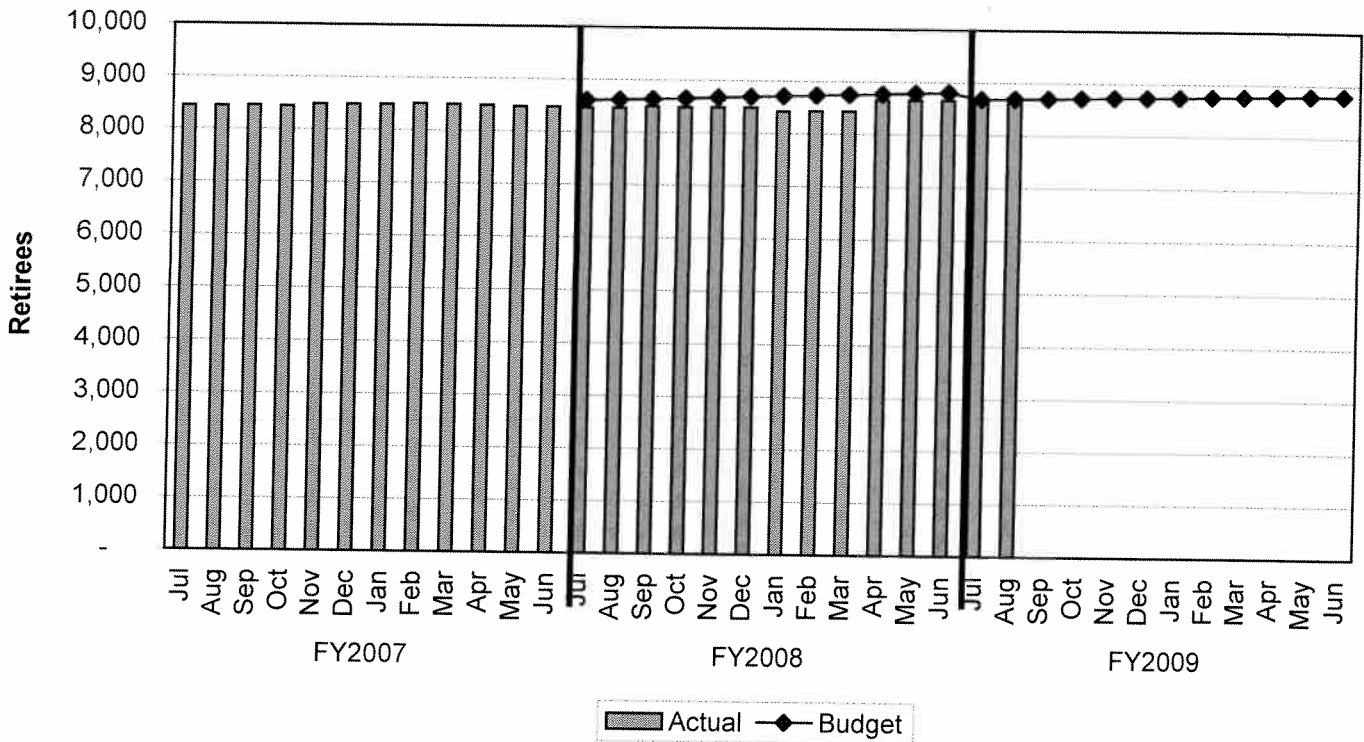


TREND INDICATORS - HOUSTON EMERGENCY CENTER



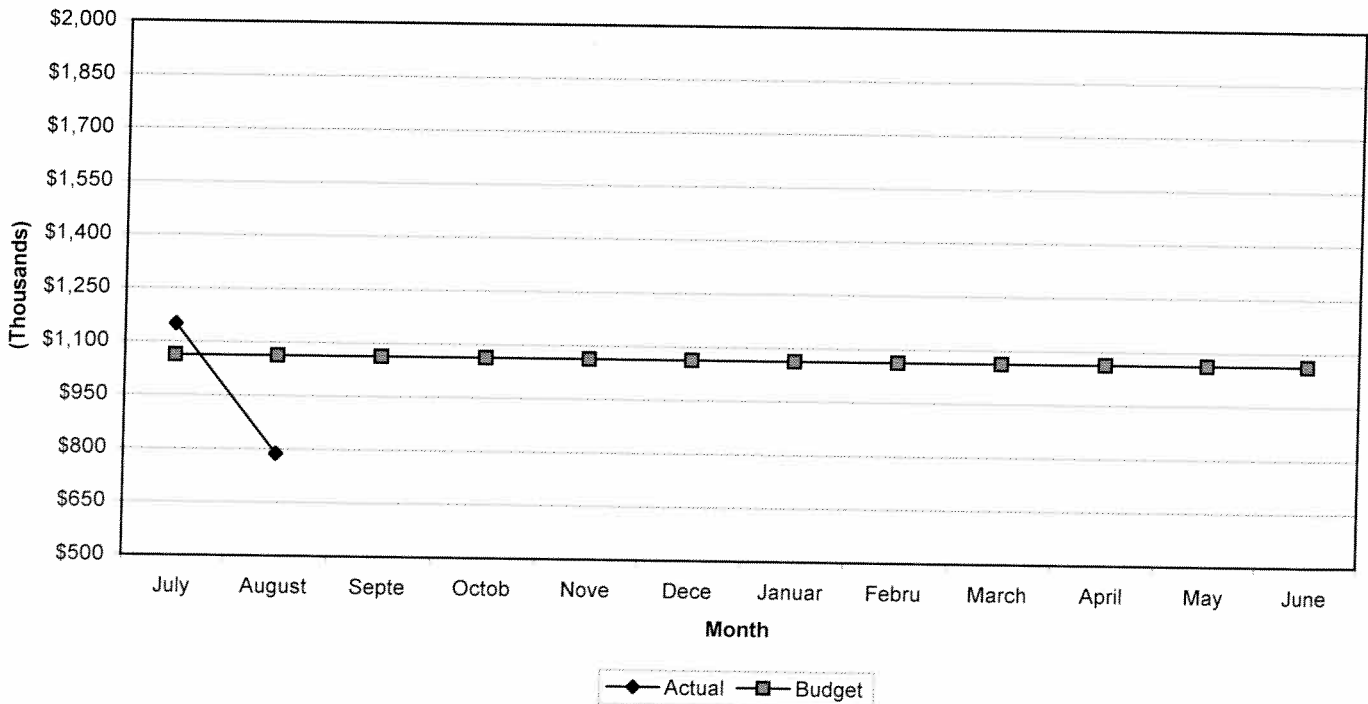
TREND INDICATORS - RETIREMENTS

Retirees Receiving Health Benefits



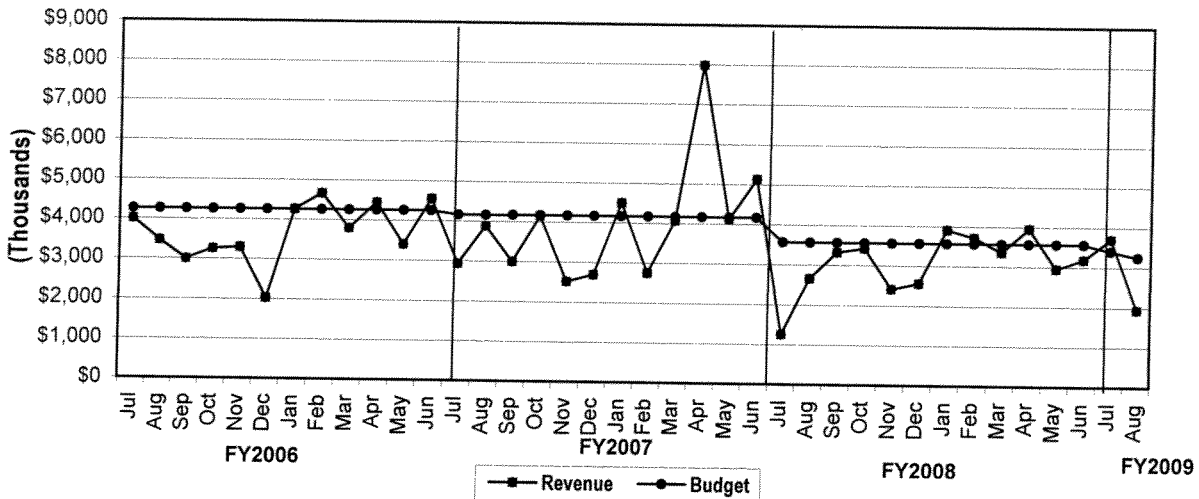
TREND INDICATORS - PARKING MANAGEMENT

Total Parking Management Revenue



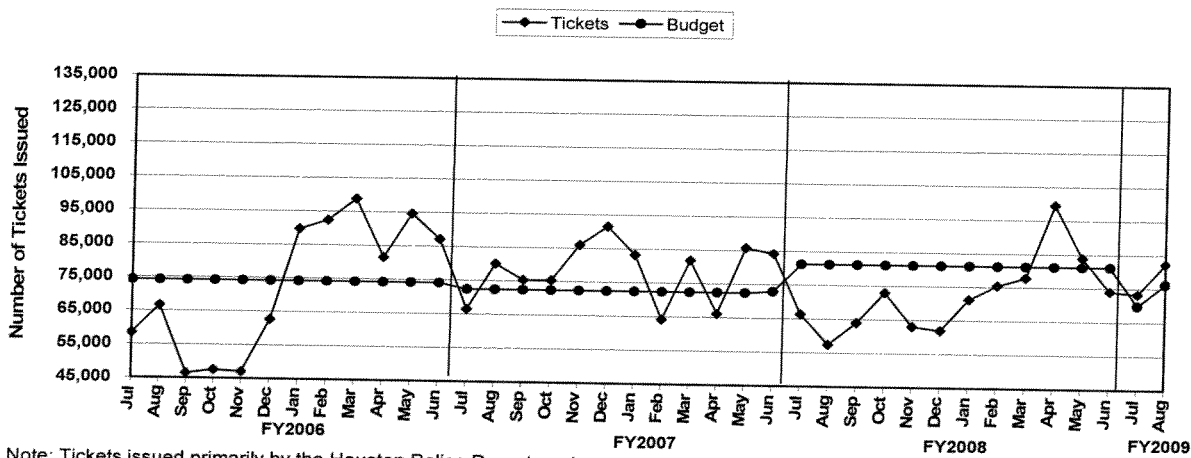
TREND INDICATORS - MUNICIPAL COURTS

Total Municipal Courts Revenue



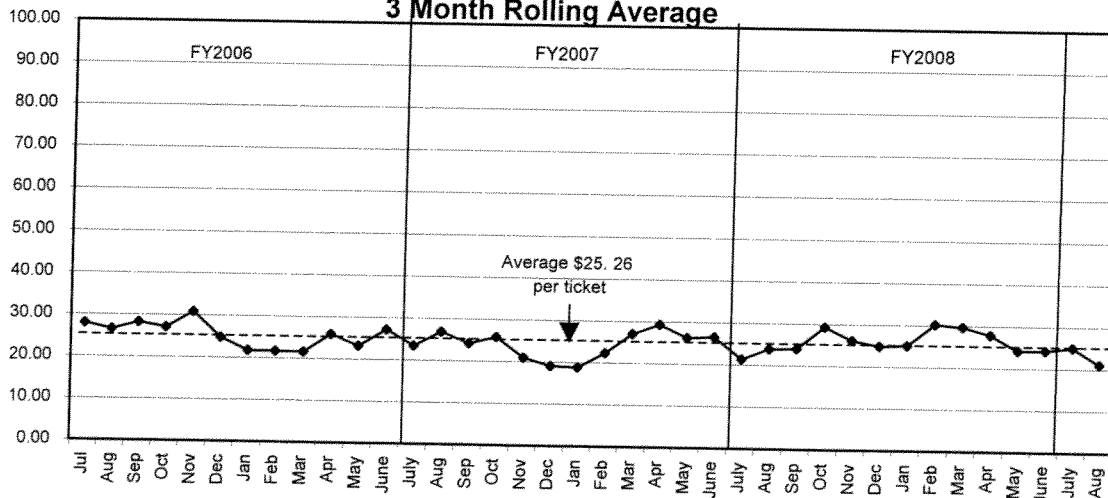
FY2008 & FY2009 does not include Parking Revenue which is now reported in the Parking Management Fund.

Number of Traffic Citations Issued



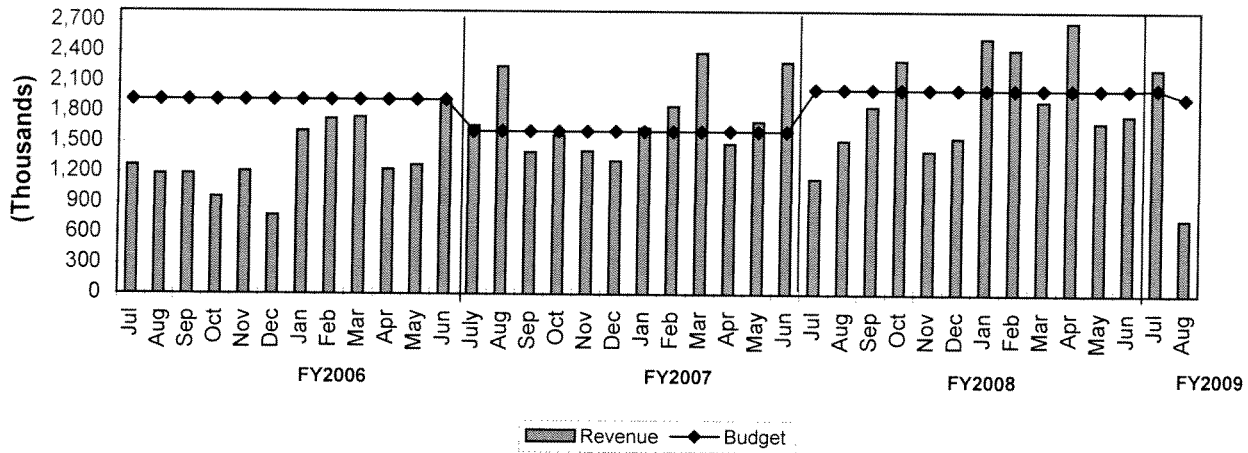
Note: Tickets issued primarily by the Houston Police Department.

Moving Violations Revenue Per Ticket Issued (427010) 3 Month Rolling Average

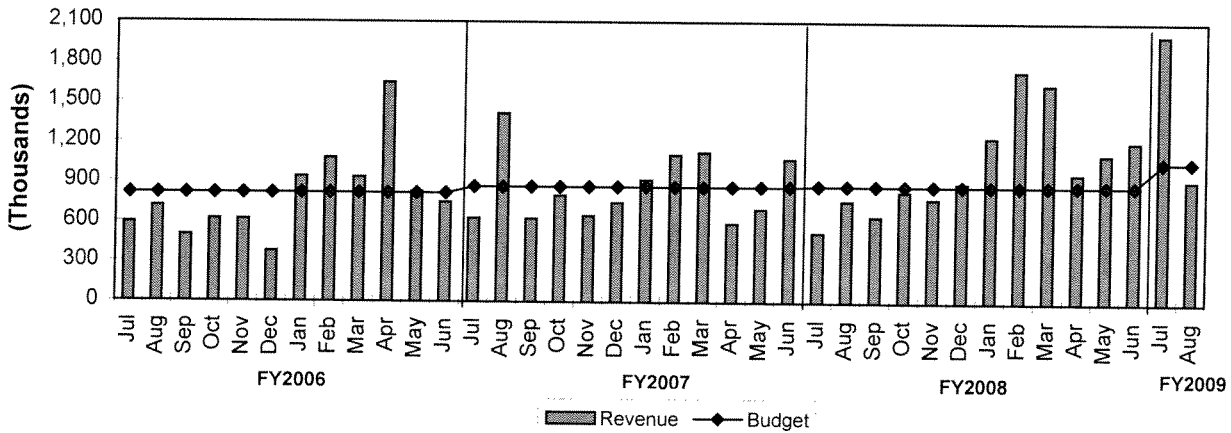


TREND INDICATORS - MUNICIPAL COURTS

Moving Violations Collections vs Budget

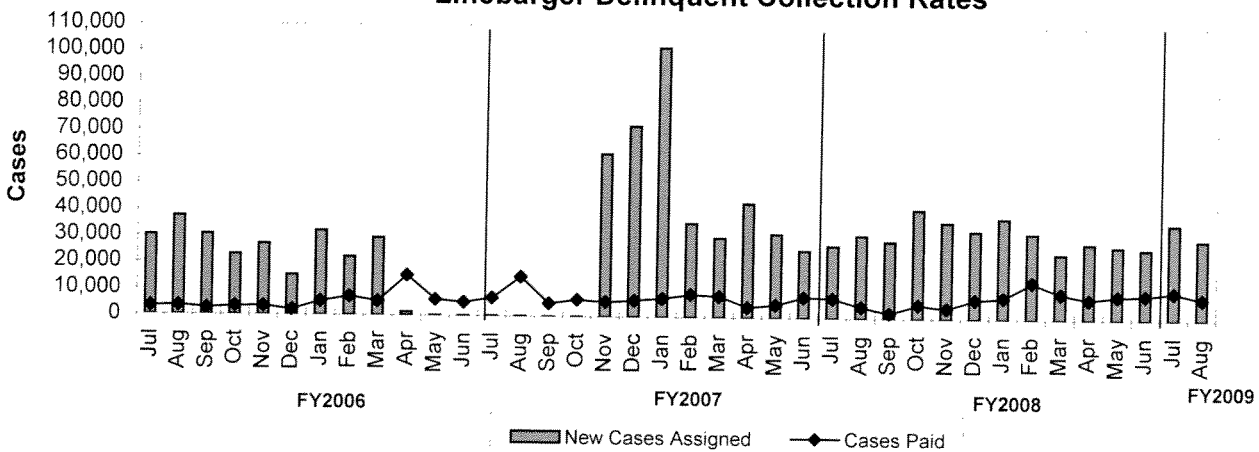


Total Delinquent Collections vs Budget*



*Net of fees and expenses paid to Linebarger

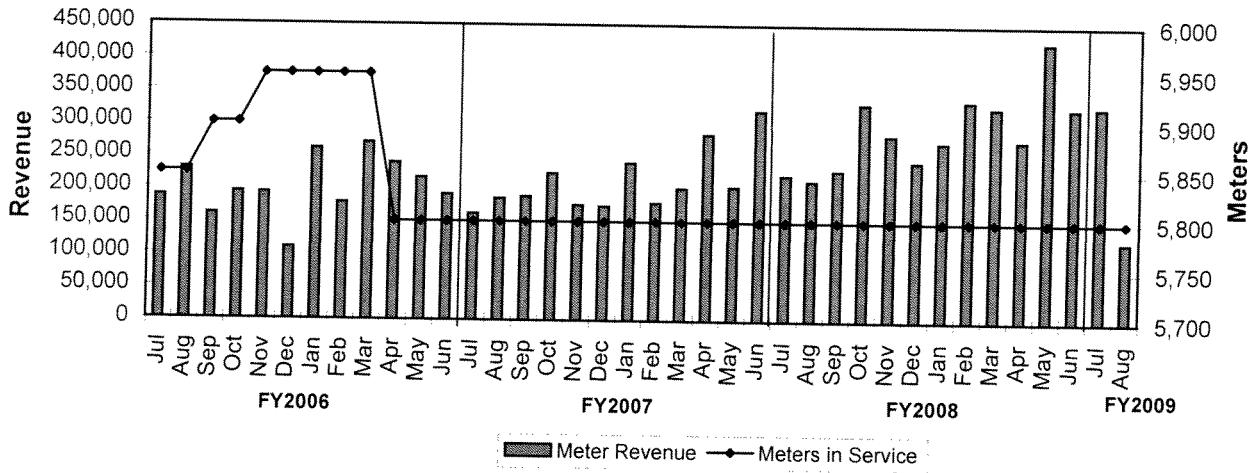
Traffic, Non-Traffic & Failure to Appear Linebarger Delinquent Collection Rates



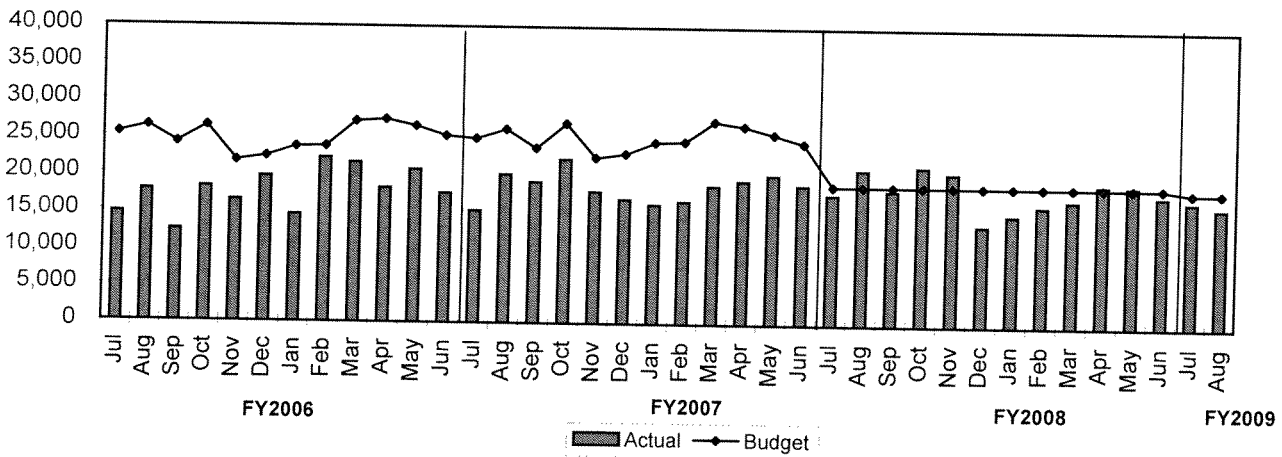
*Excludes Delinquent Parking Collections

TREND INDICATORS - MUNICIPAL COURTS

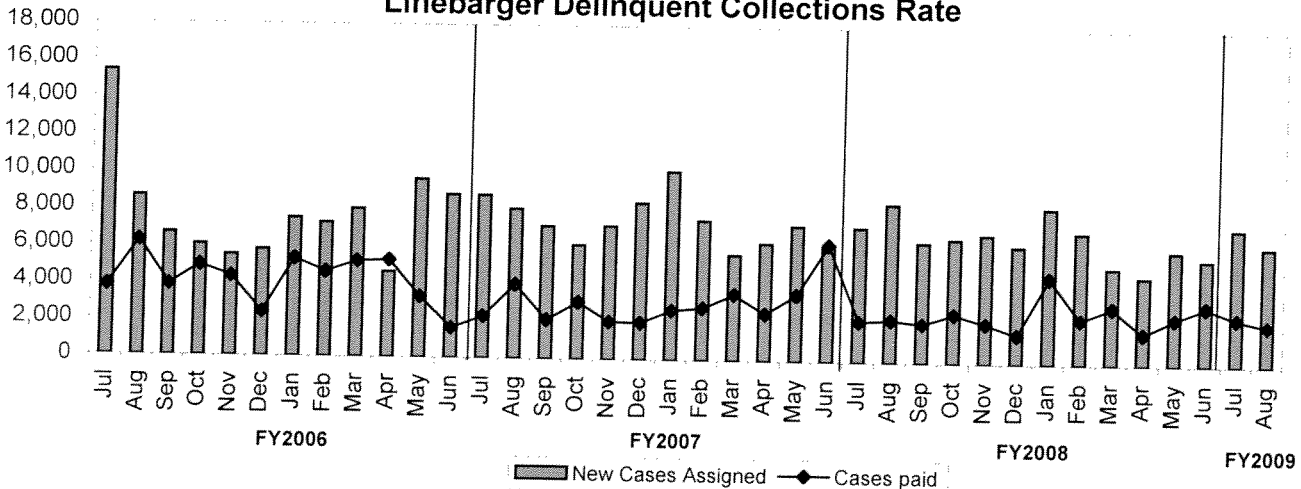
Meter Revenue vs # Meters in Service



Parking Violations vs Budget

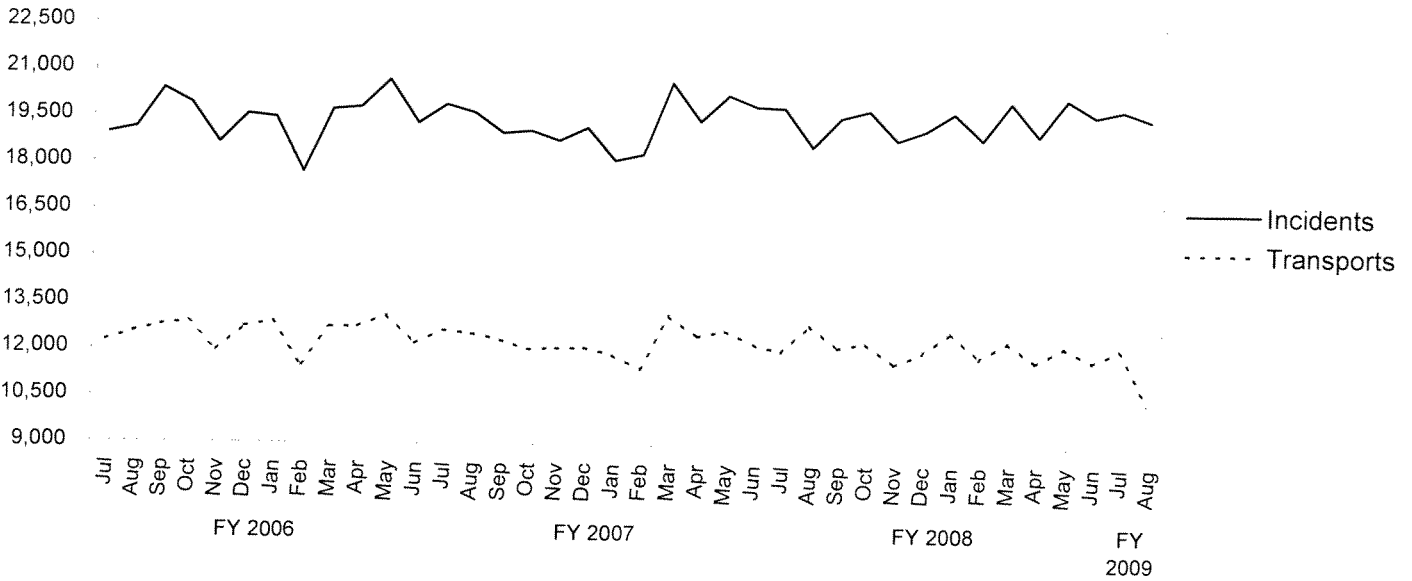


Parking Meter Violations Linebarger Delinquent Collections Rate

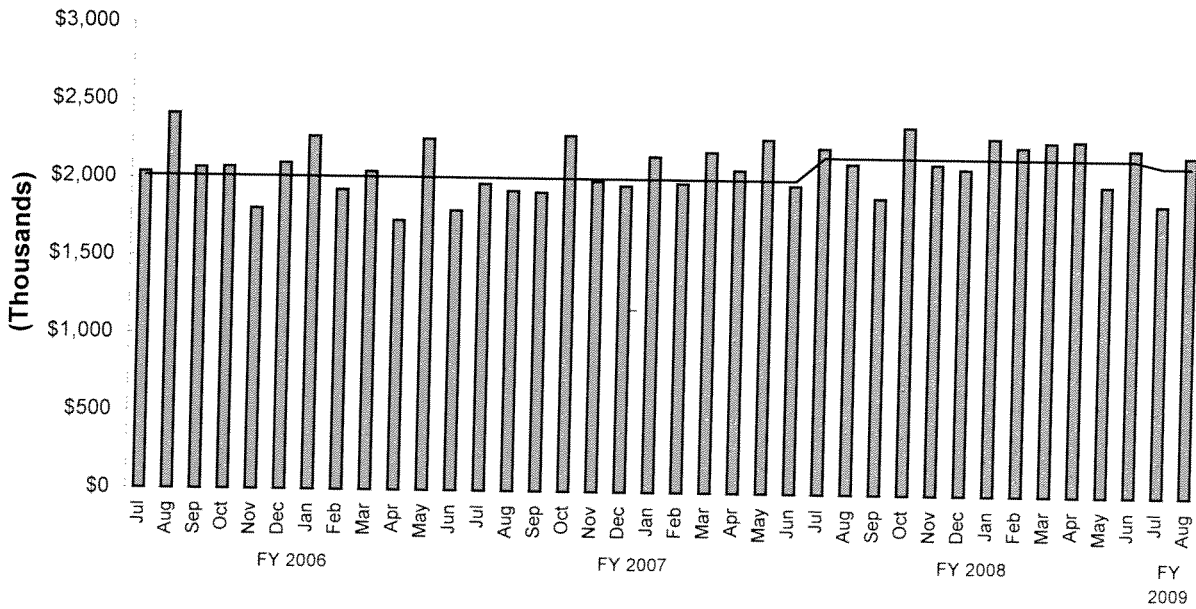


TREND INDICATORS - AMBULANCE SERVICES

EMS Incidents and Transports



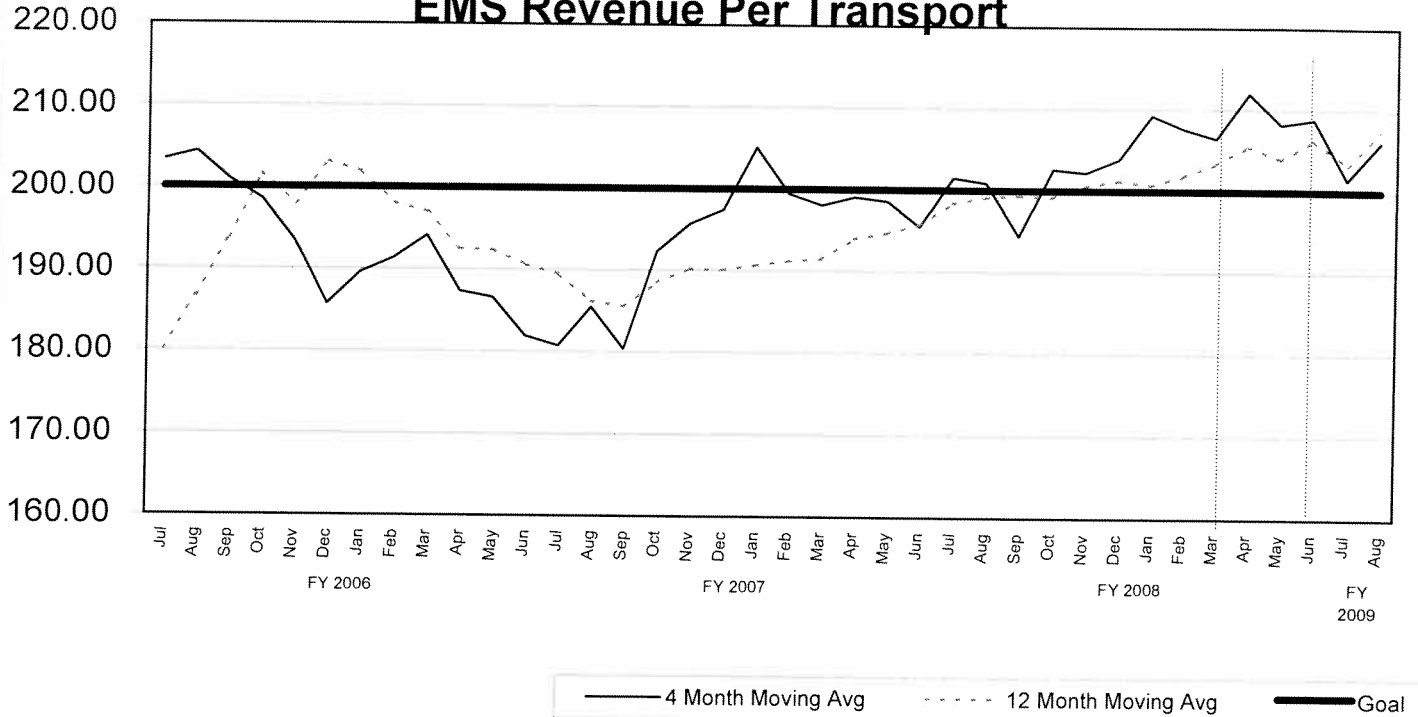
EMS Revenue (Net Collections **)



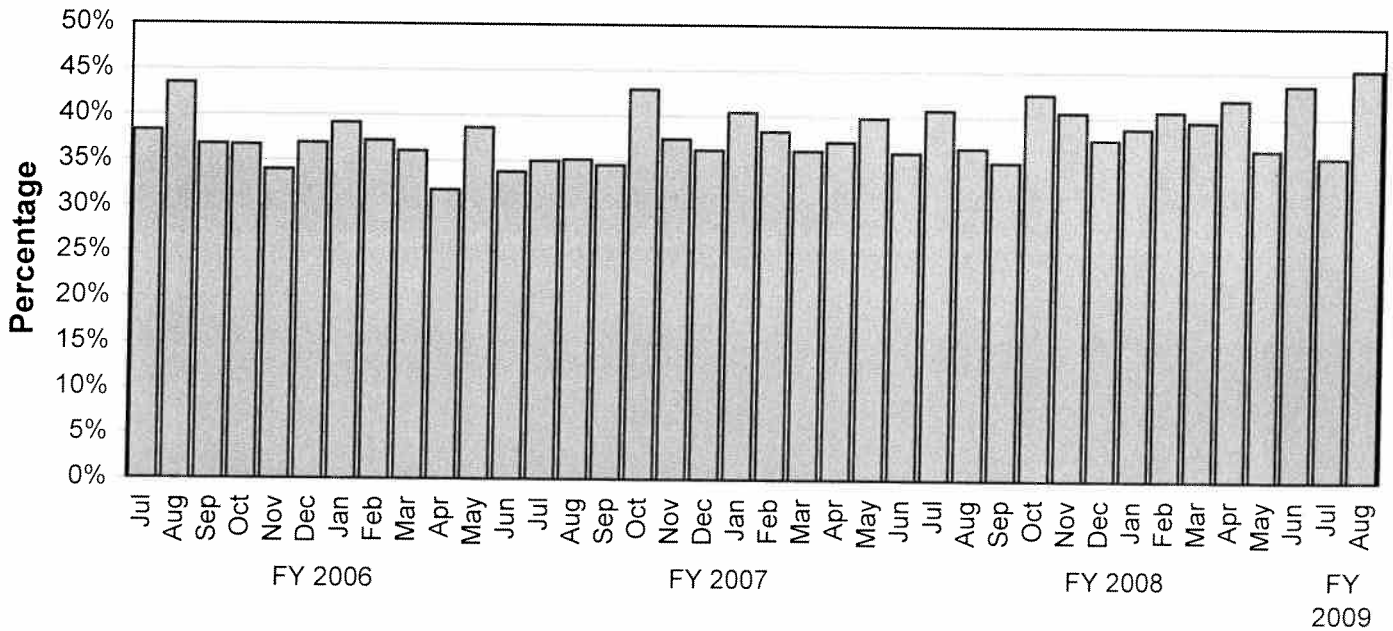
** The net collections for August 2008 were computed using a 12-month average of the Contractor's Invoice

TREND INDICATORS - AMBULANCE SERVICES

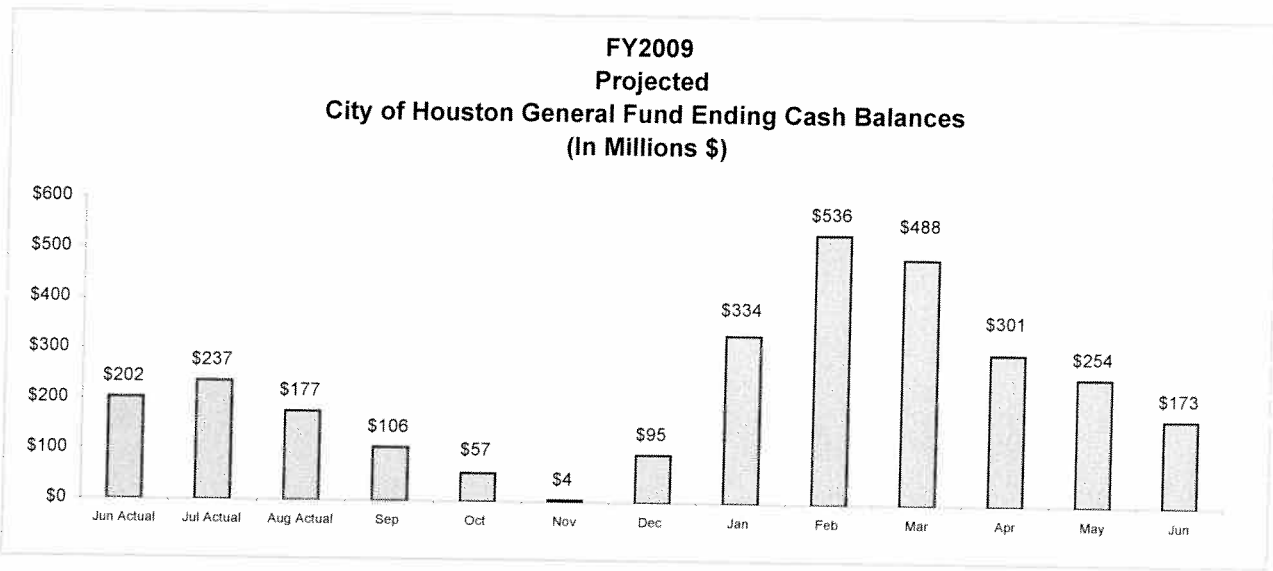
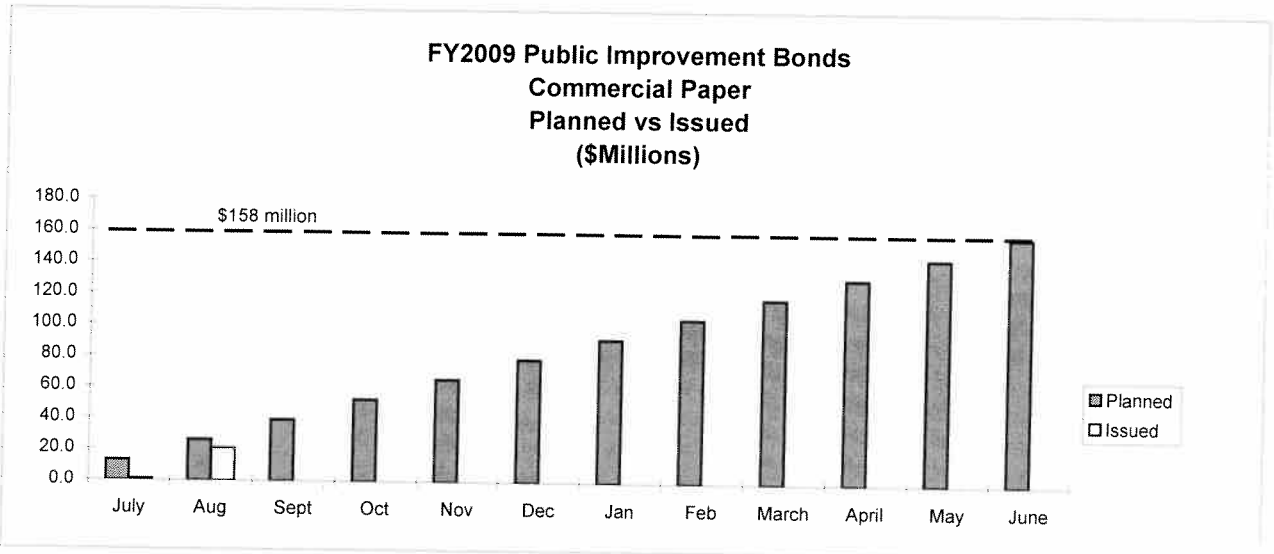
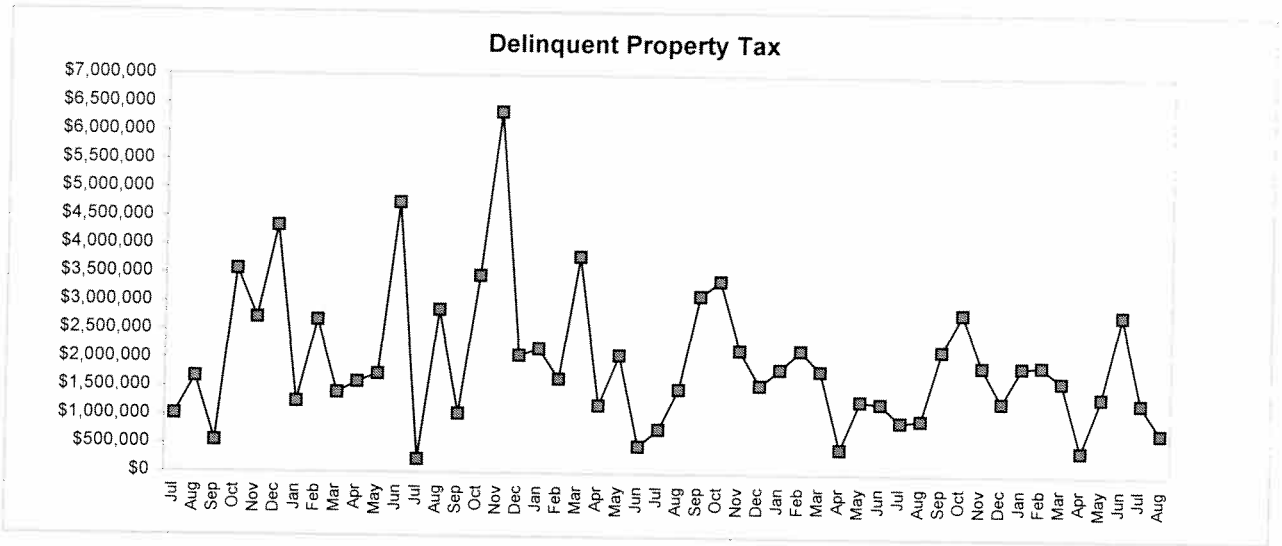
4 Month and 12 Month Moving Average EMS Revenue Per Transport



EMS - Gross Collection Percentage

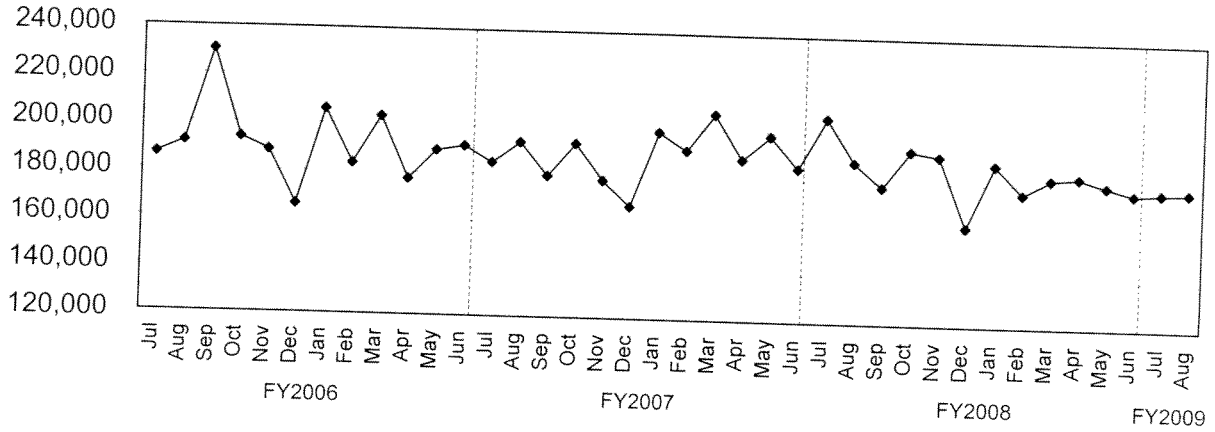


TREND INDICATORS - MISCELLANEOUS



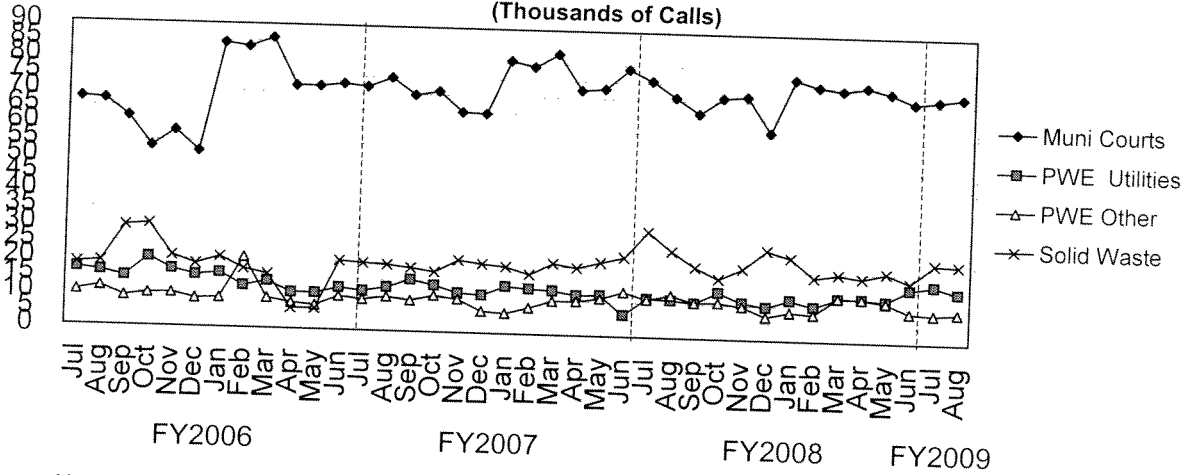
TREND INDICATORS - MISCELLANEOUS

3-1-1 Call Volume



3-1-1 became fully operational in August 2001

Operator Assisted 3-1-1 Call Distribution (Thousands of Calls)



4 largest users of operator assisted 3-1-1 calls.