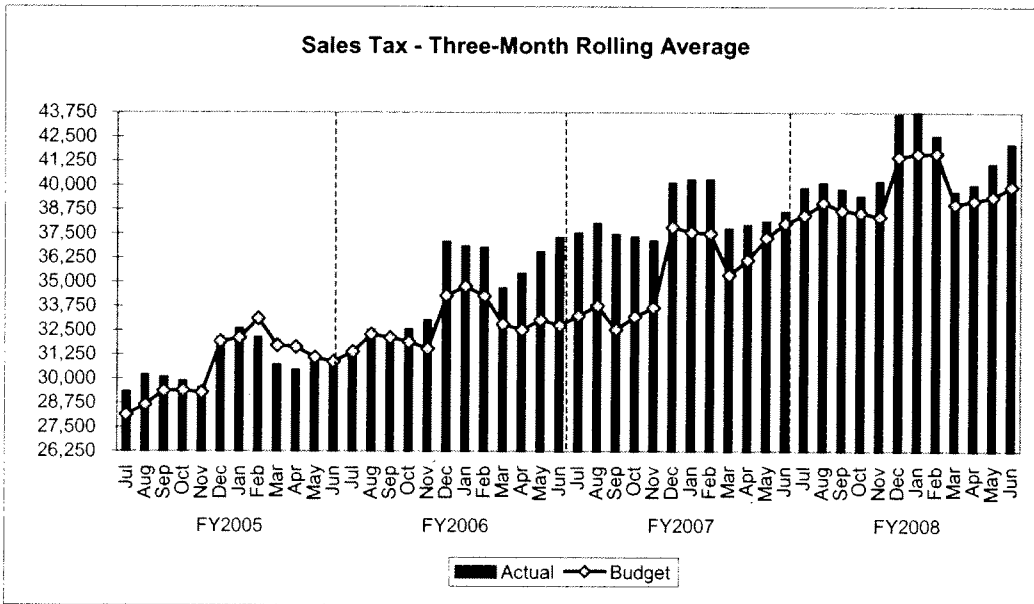
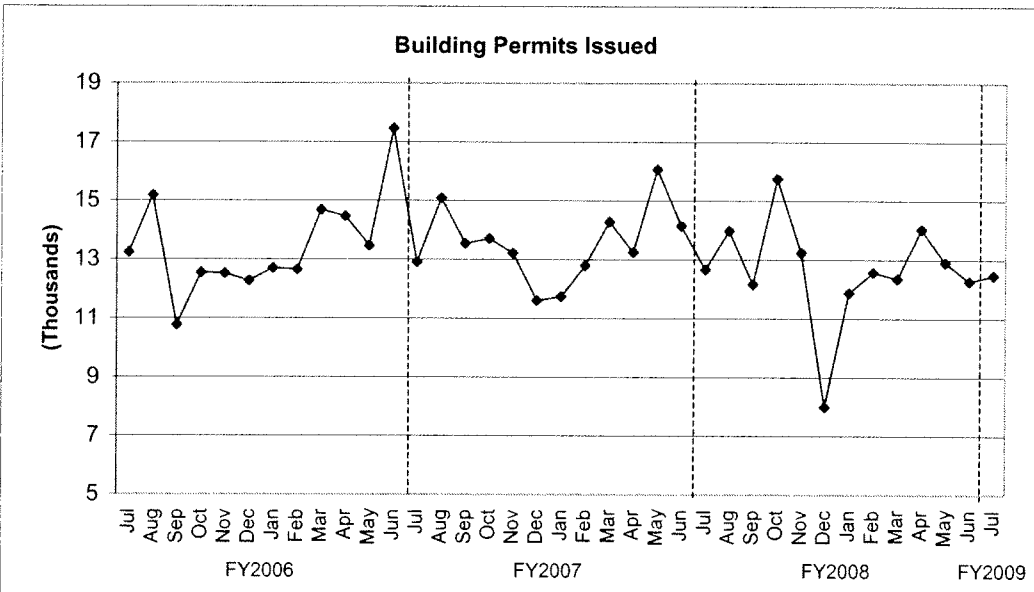


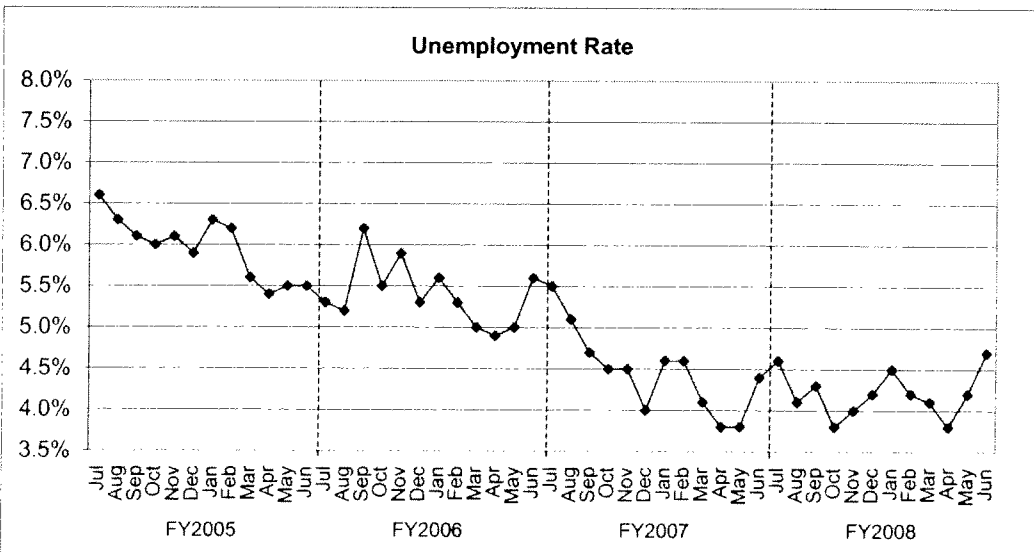
## TREND INDICATORS - LOCAL ECONOMY



Source: Office of State Comptroller

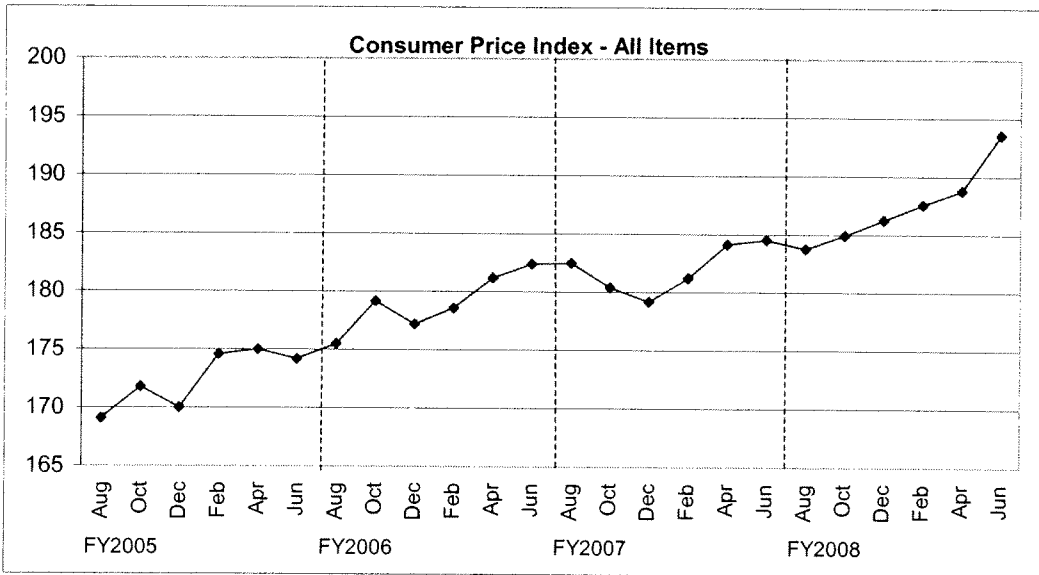


Source: City of Houston Planning and Development Department

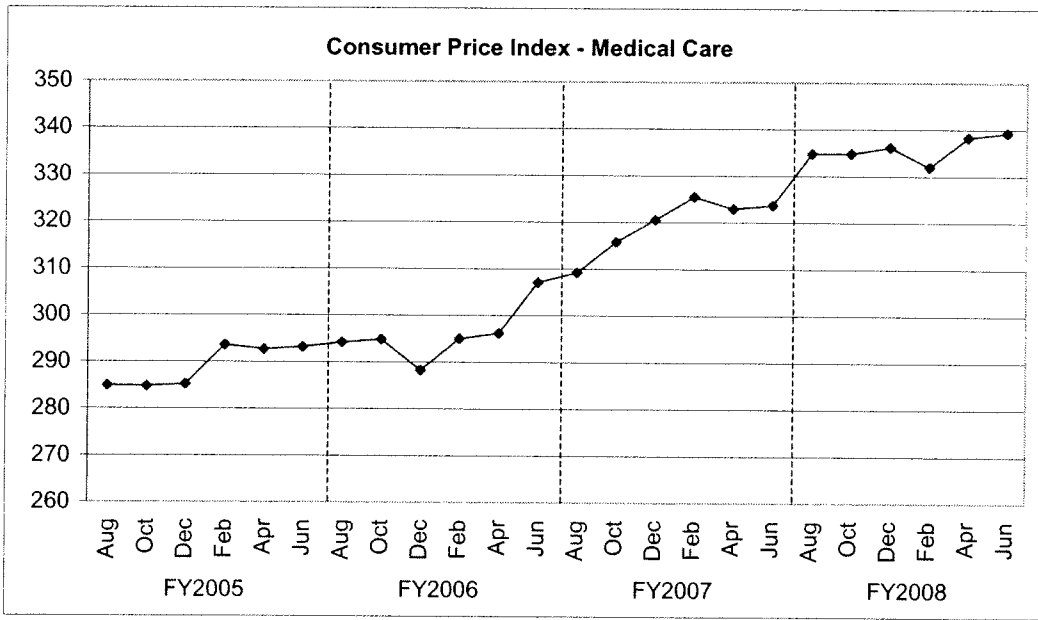


Source: Databook Houston; University of Houston Center for Public Policy; not seasonally adjusted

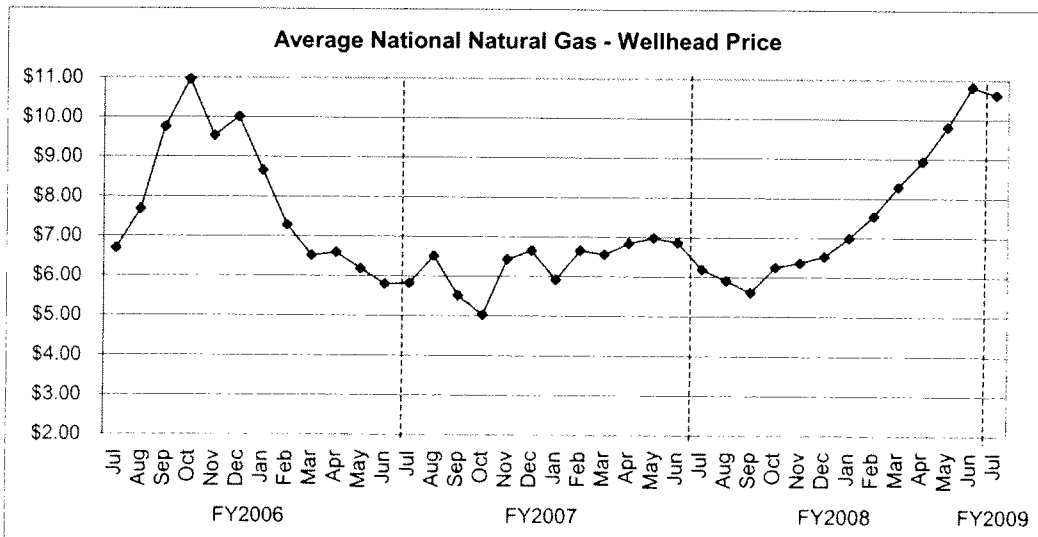
## TREND INDICATORS - LOCAL ECONOMY



Source: Bureau of Labor Statistics - Houston, Galveston, Brazoria TX

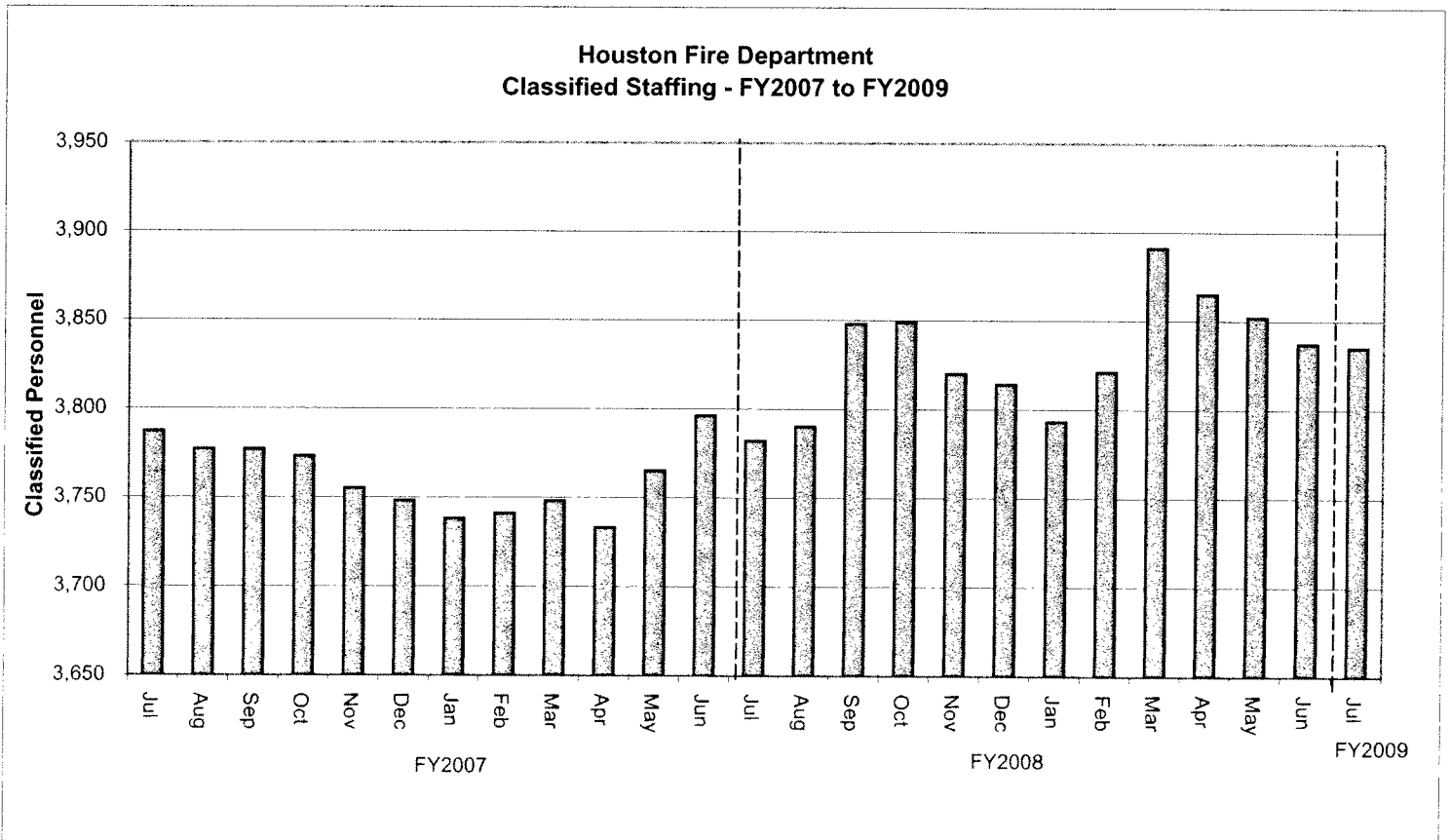
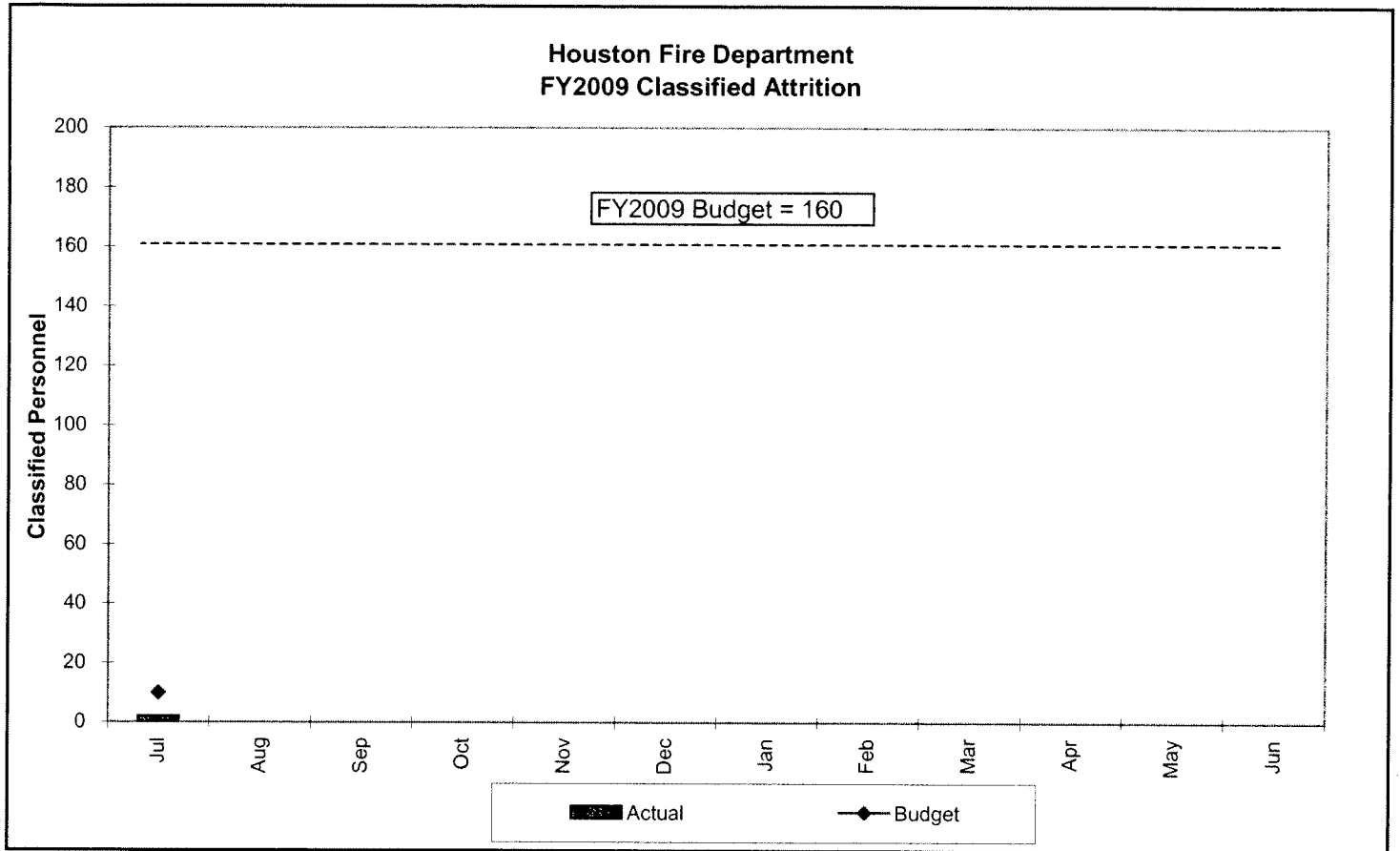


Source: Bureau of Labor Statistics - Houston, Galveston, Brazoria TX



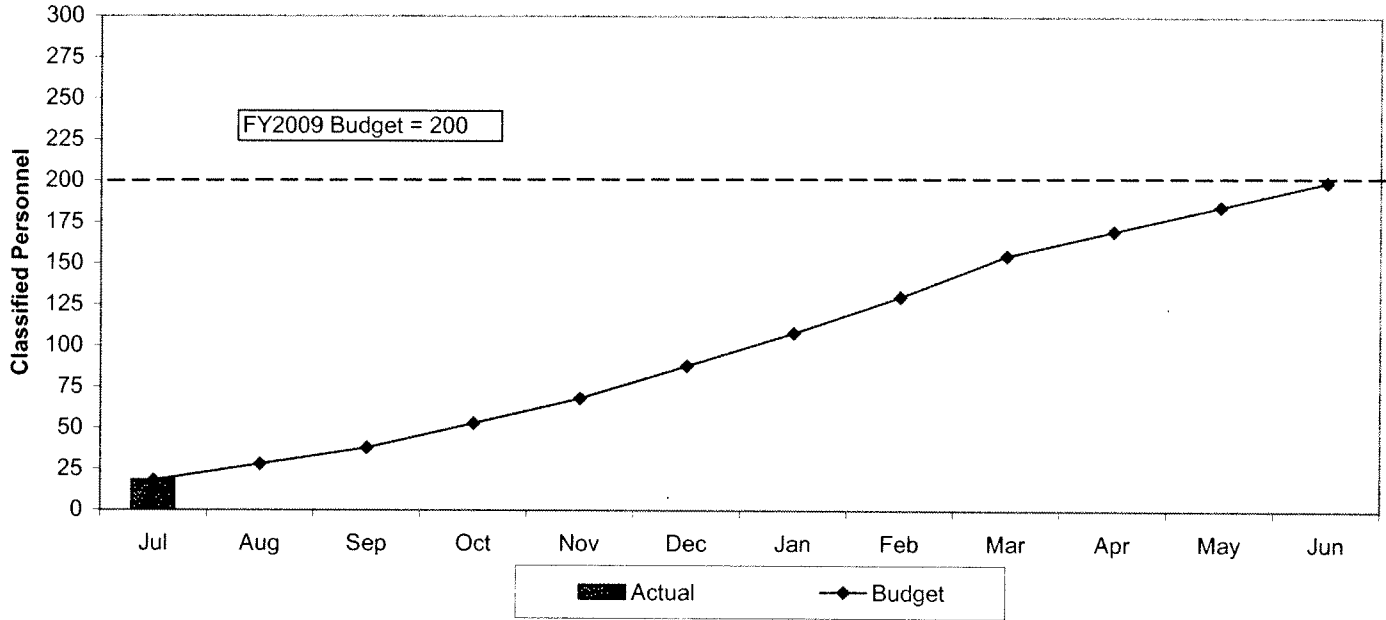
Source: Energy Information Administration/Natural Gas Monthly

# TREND INDICATORS - RETIREMENTS

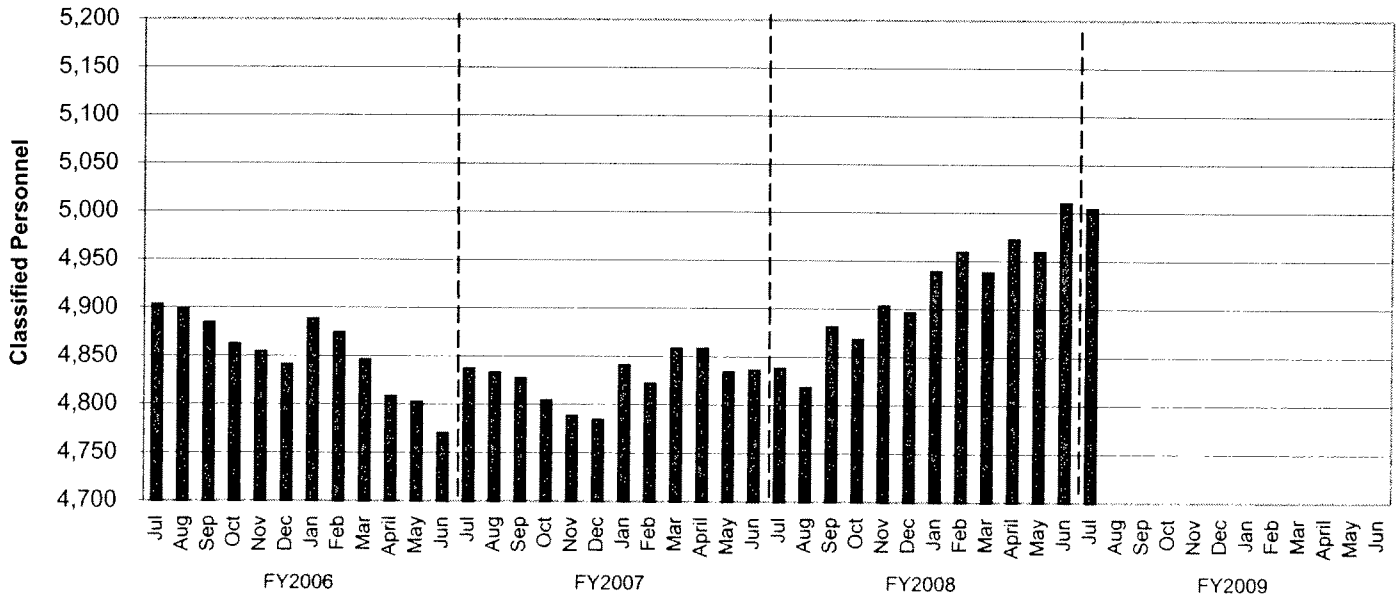


## TREND INDICATORS - HIRING AND RETIREMENTS

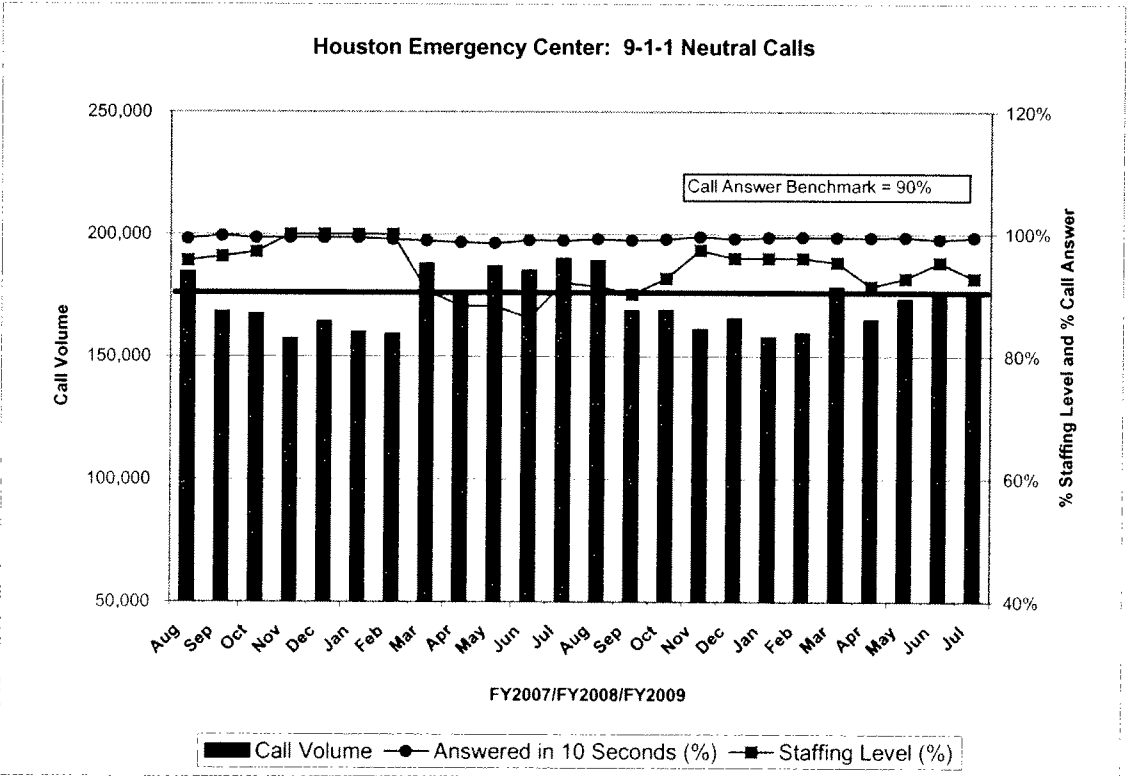
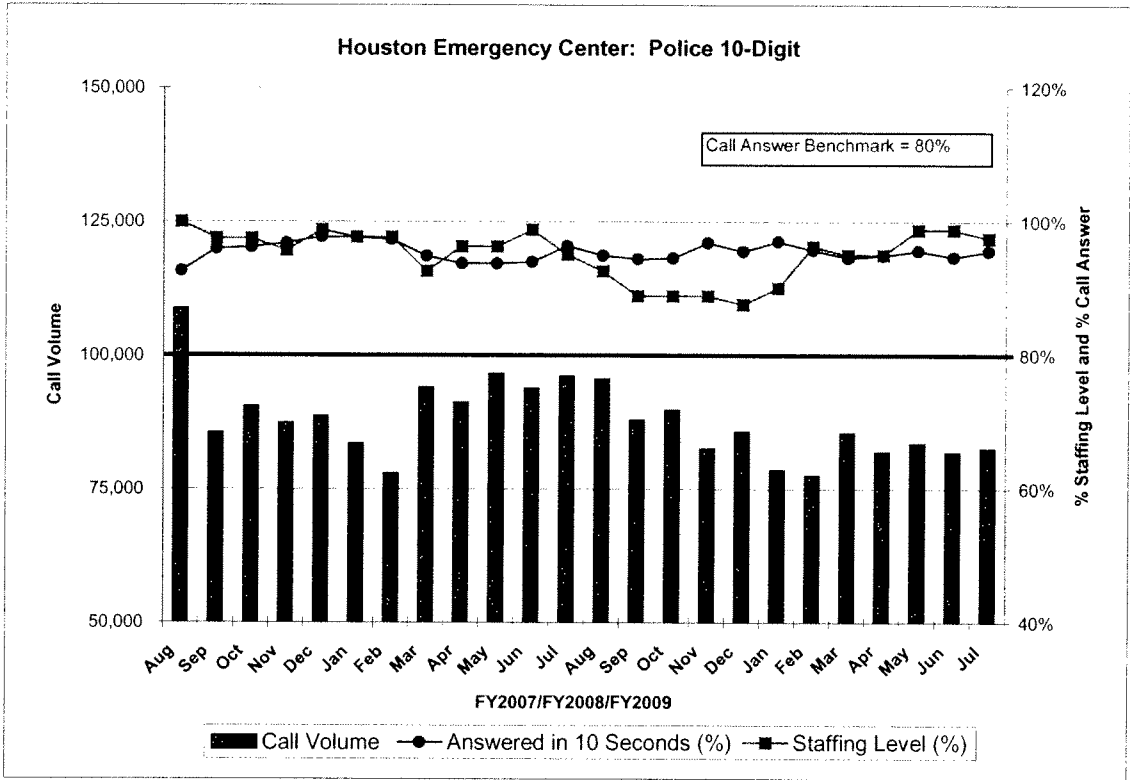
**Houston Police Department  
FY2009 Classified Attrition**



**Houston Police Department  
Classified Staffing - FY2006 to FY2009**

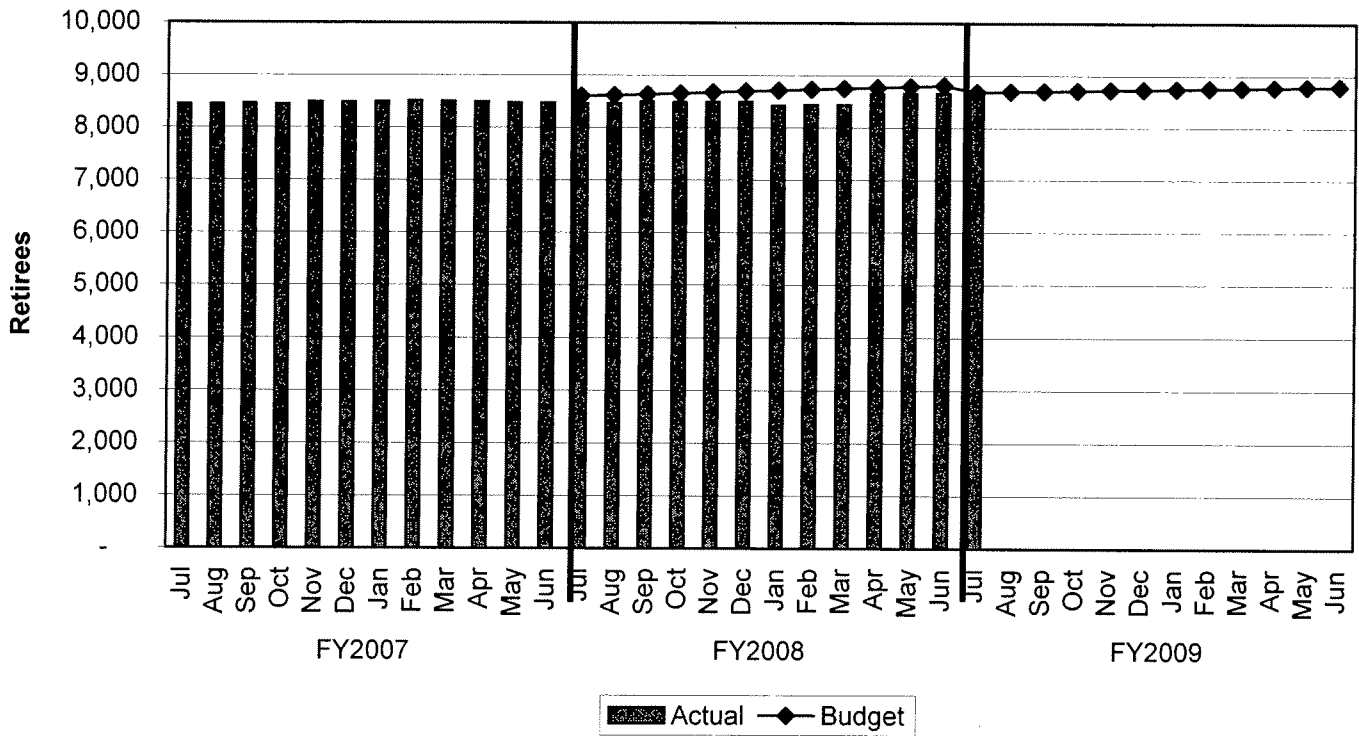


# TREND INDICATORS - HOUSTON EMERGENCY CENTER



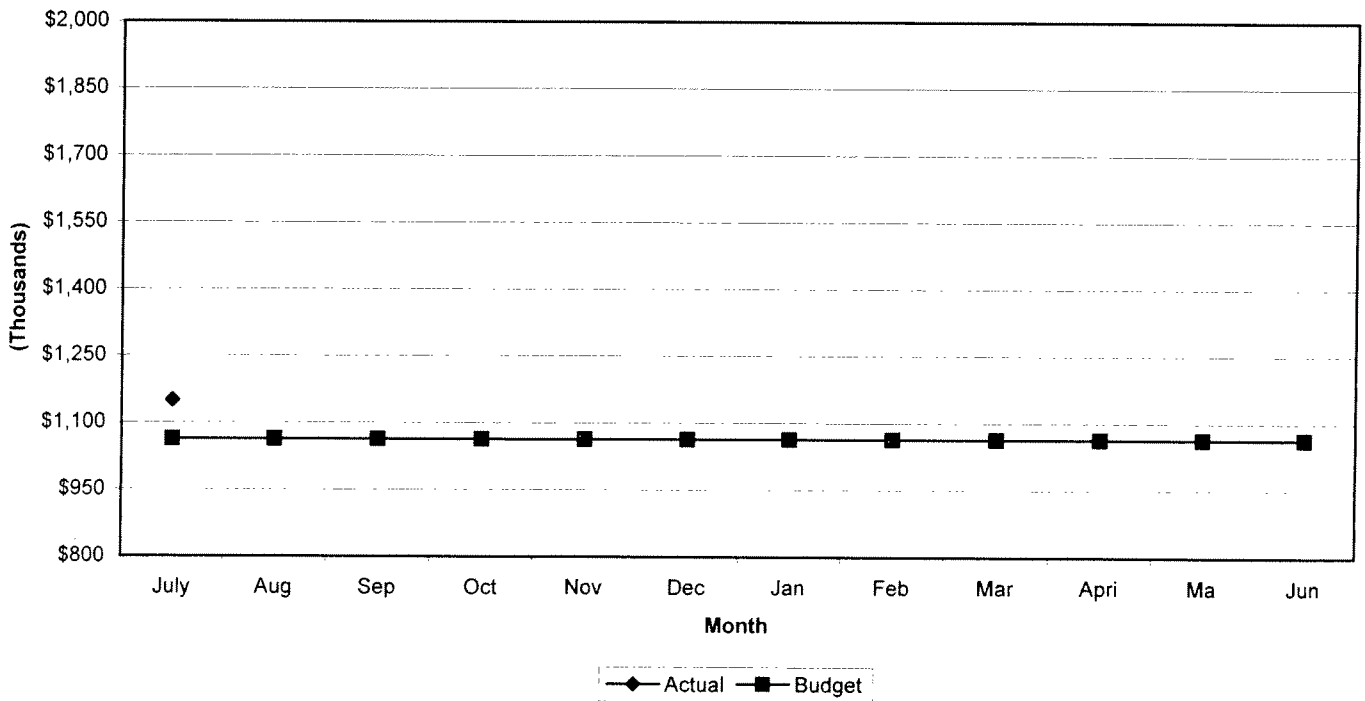
## TREND INDICATORS - RETIREMENTS

### Retirees Receiving Health Benefits

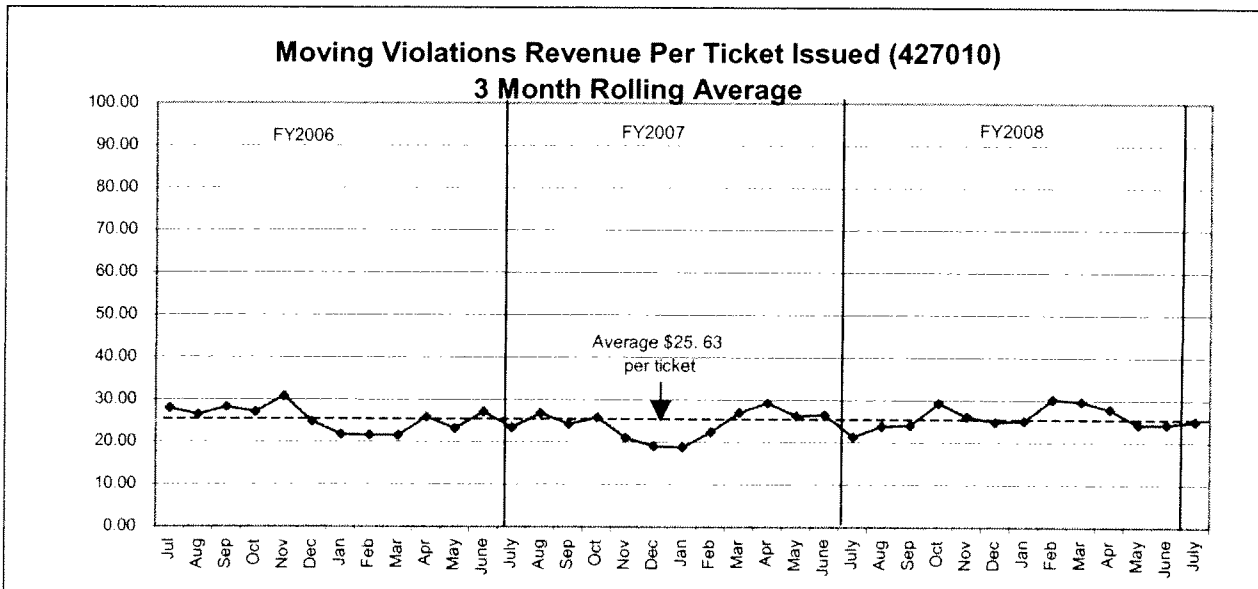
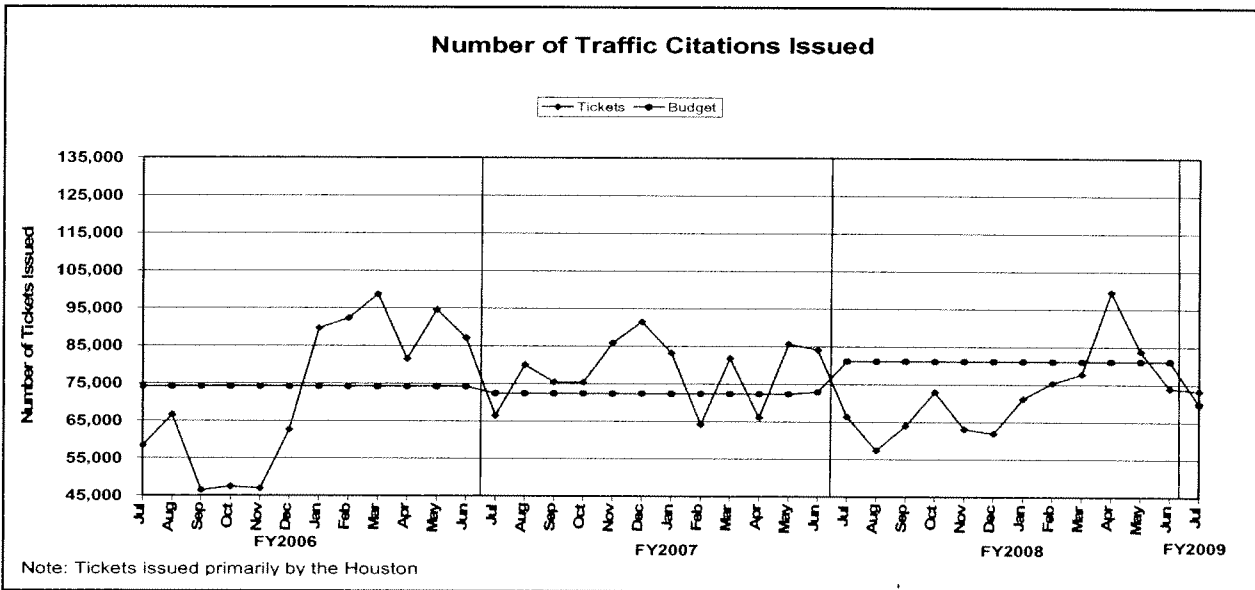
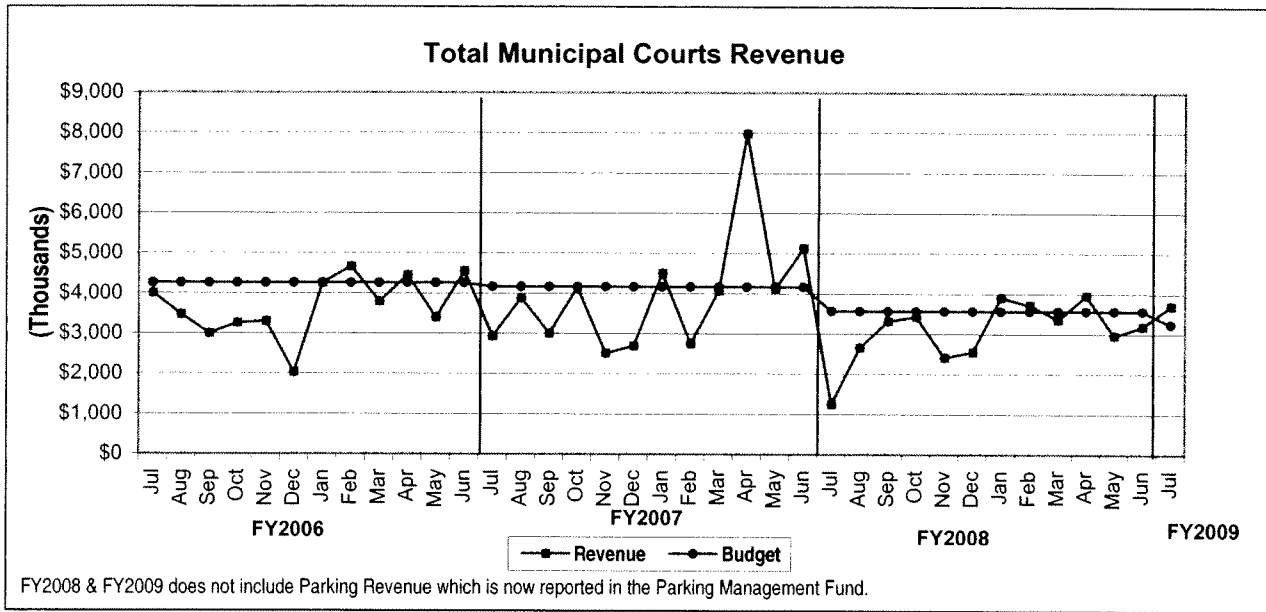


## TREND INDICATORS - PARKING MANAGEMENT

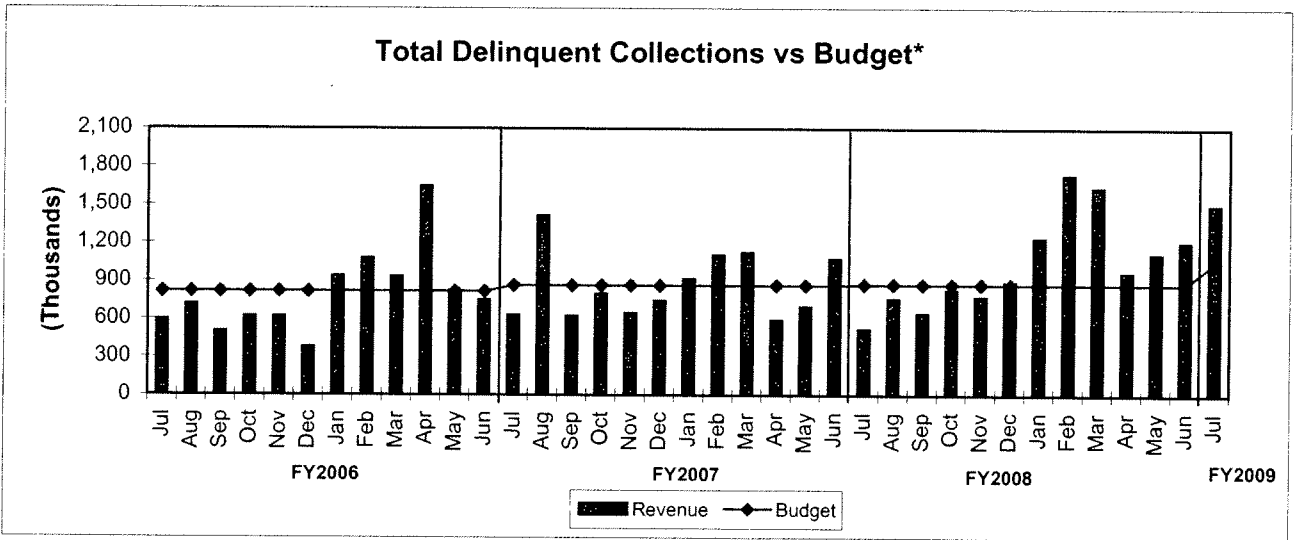
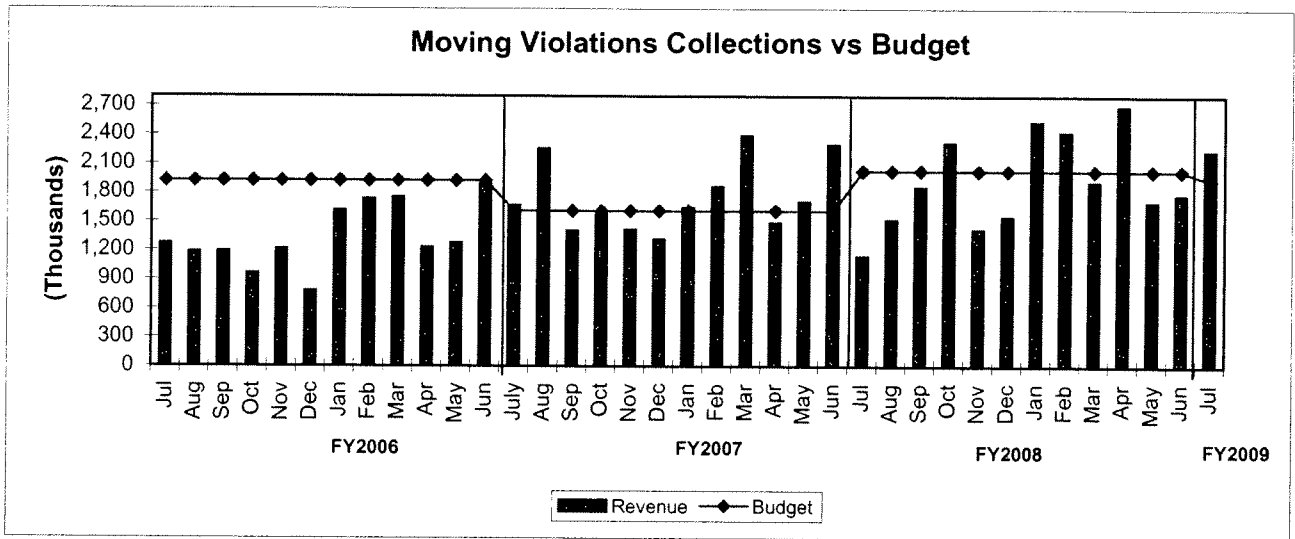
### Total Parking Management Revenue



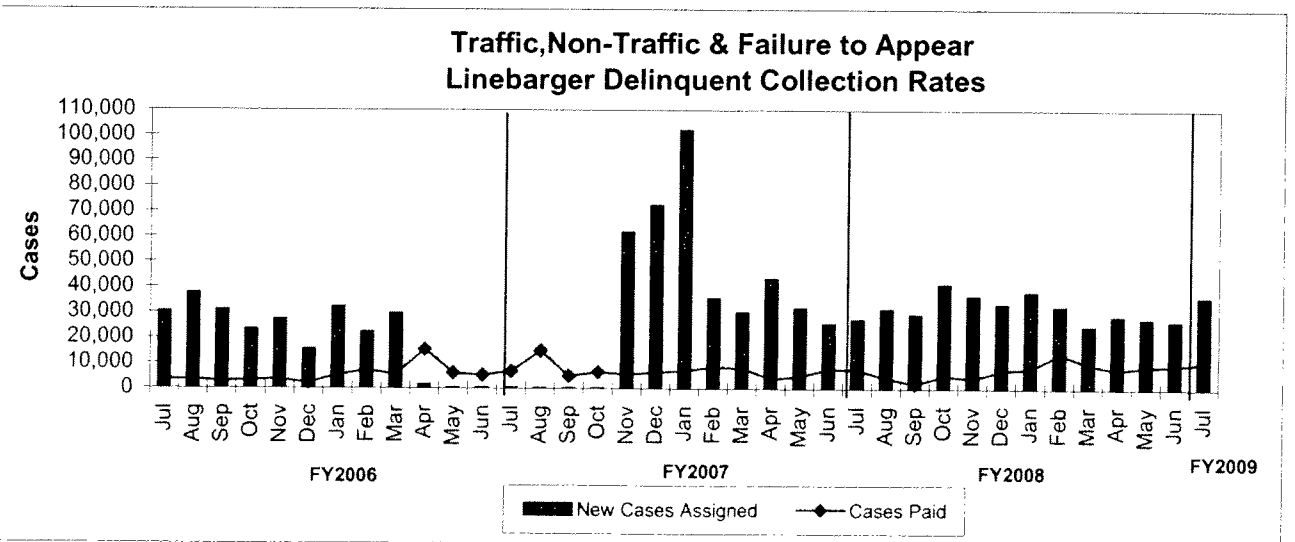
# TREND INDICATORS - MUNICIPAL COURTS



# TREND INDICATORS - MUNICIPAL COURTS



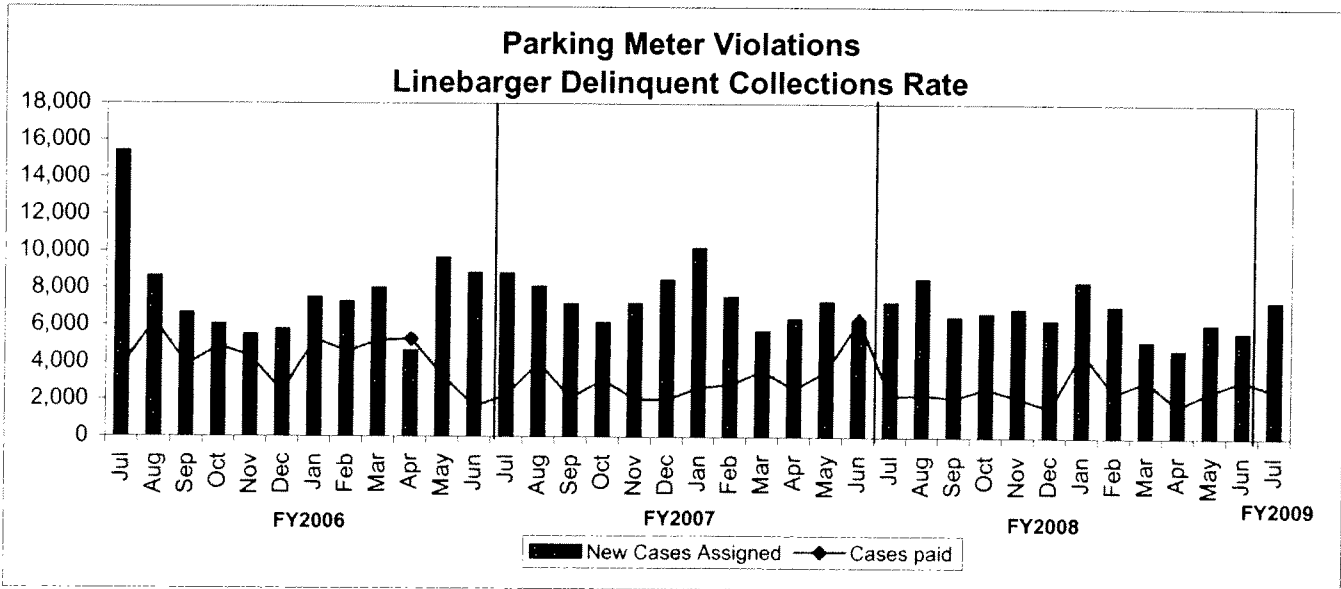
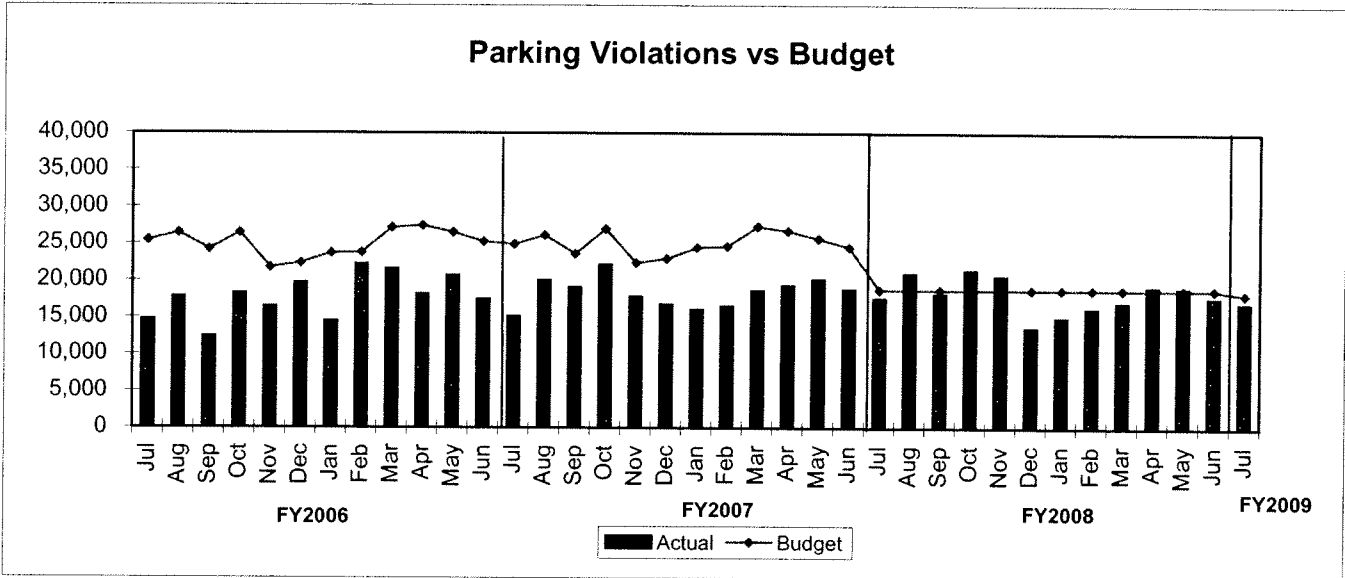
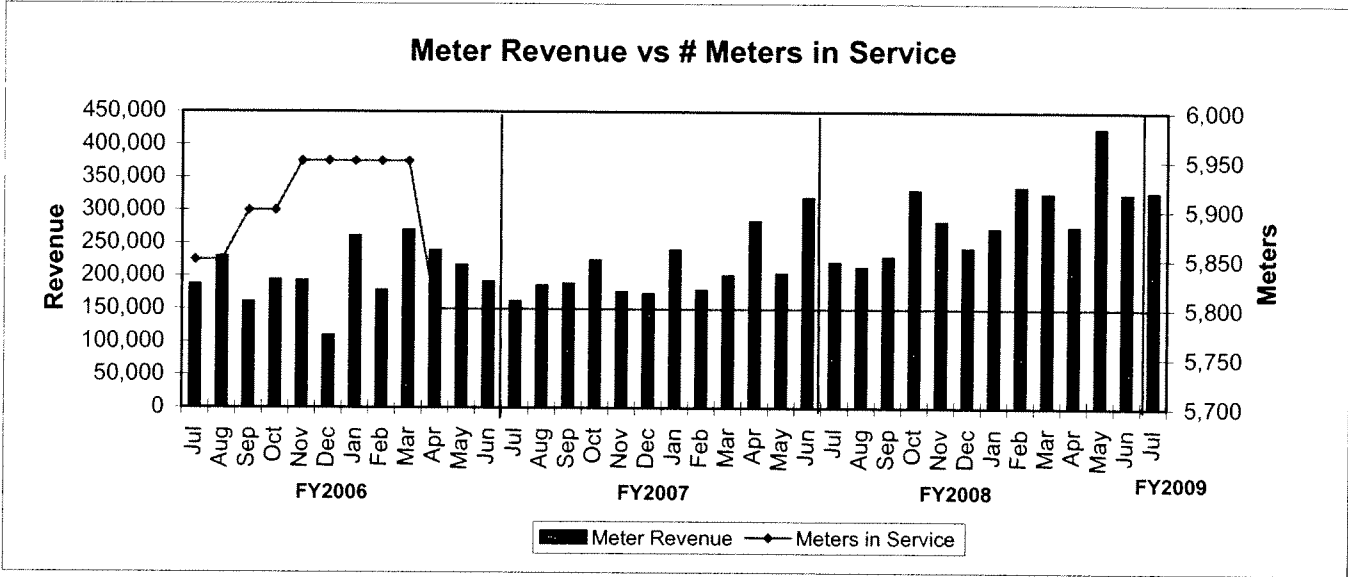
\*Net of fees and expenses paid to Lineberger



\*Excludes Delinquent Parking Collections

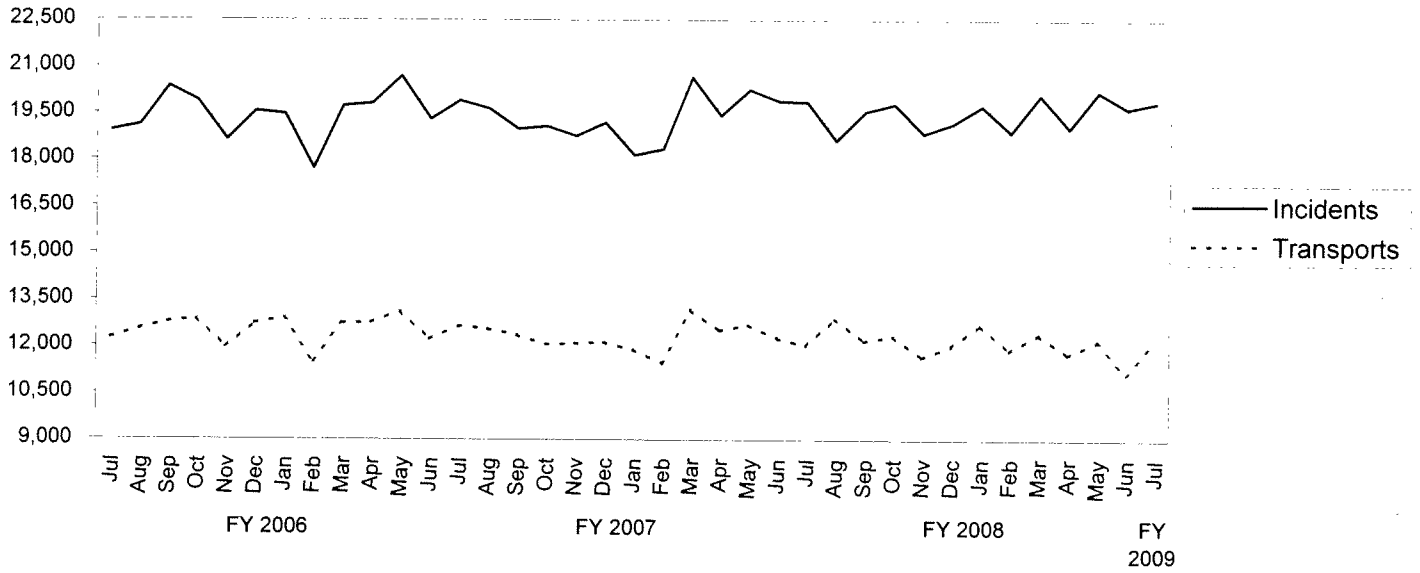


# TREND INDICATORS - MUNICIPAL COURTS

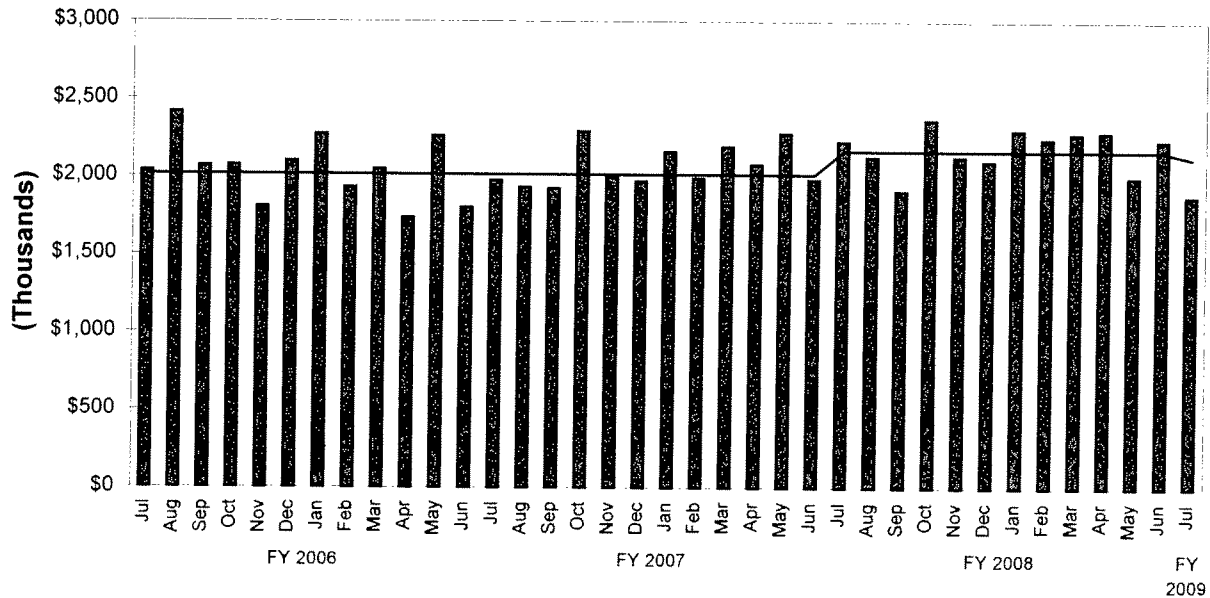


# TREND INDICATORS - AMBULANCE SERVICES

## EMS Incidents and Transports



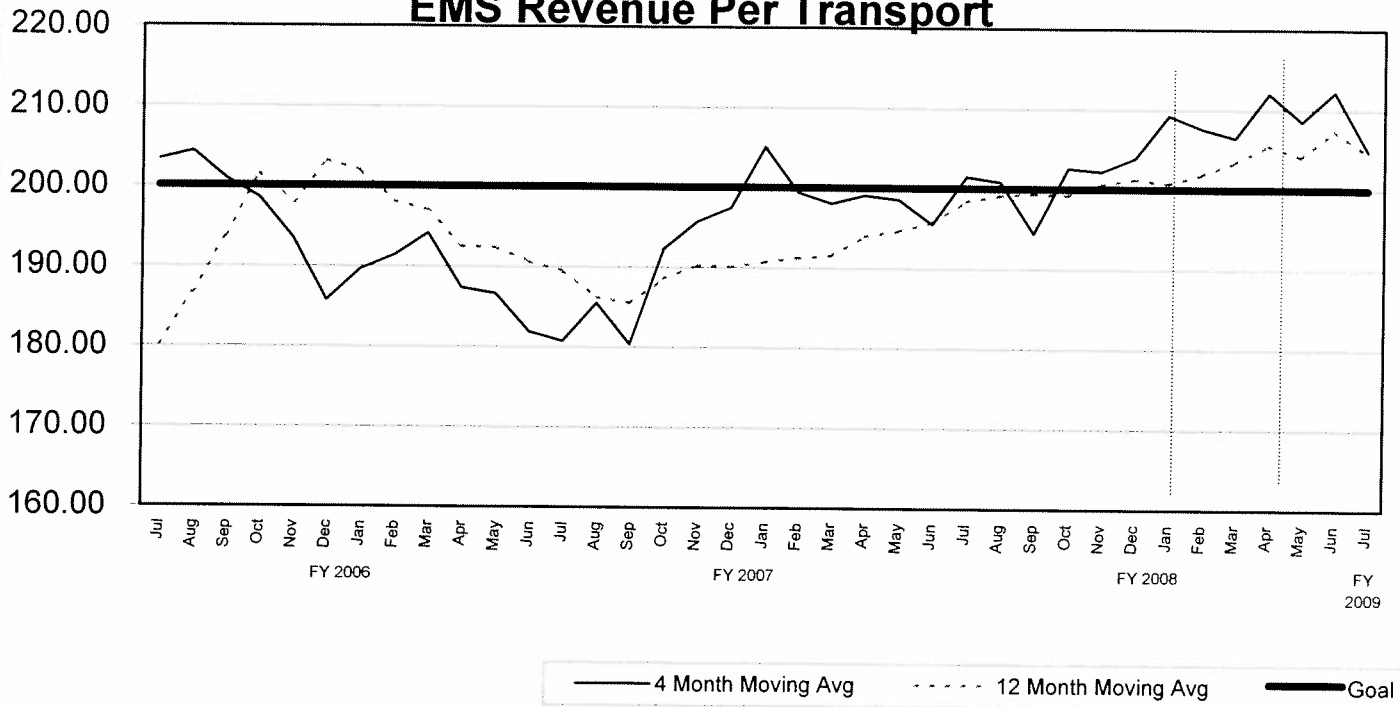
## EMS Revenue (Net Collections \*\*)



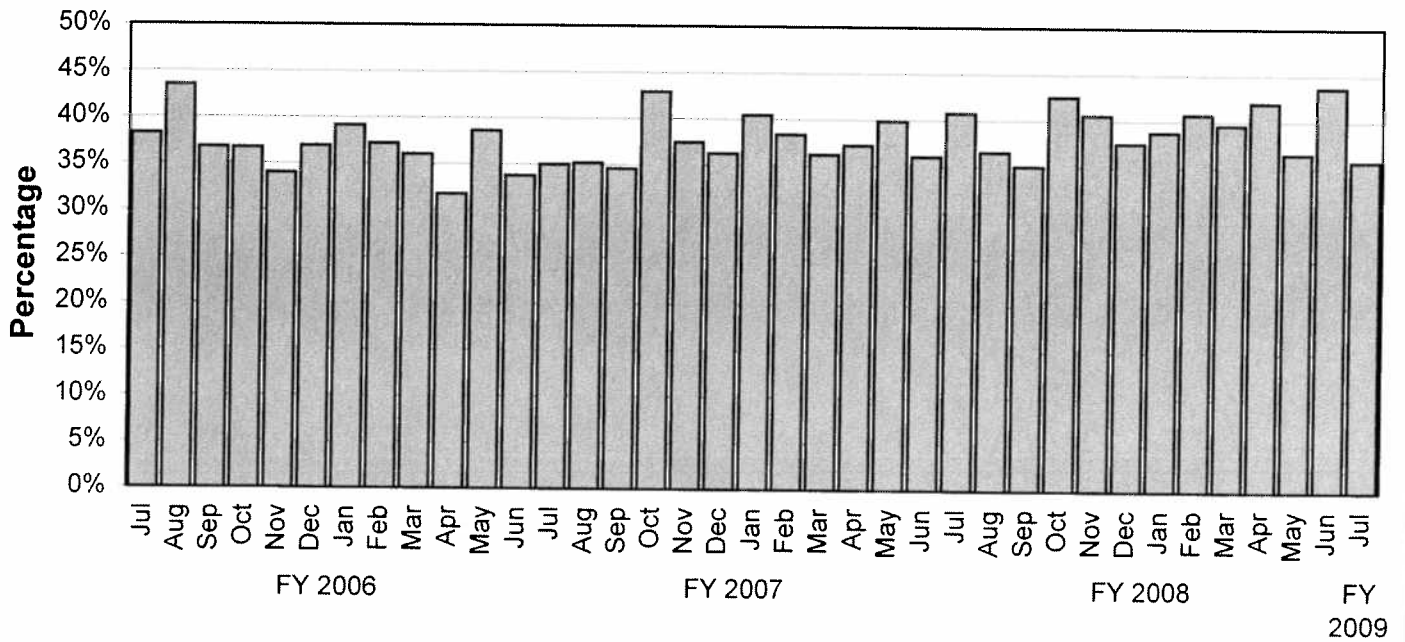
\*\* The net collections for July 2008 were computed using a 12-month average of the Contractor's Invoice

# TREND INDICATORS - AMBULANCE SERVICES

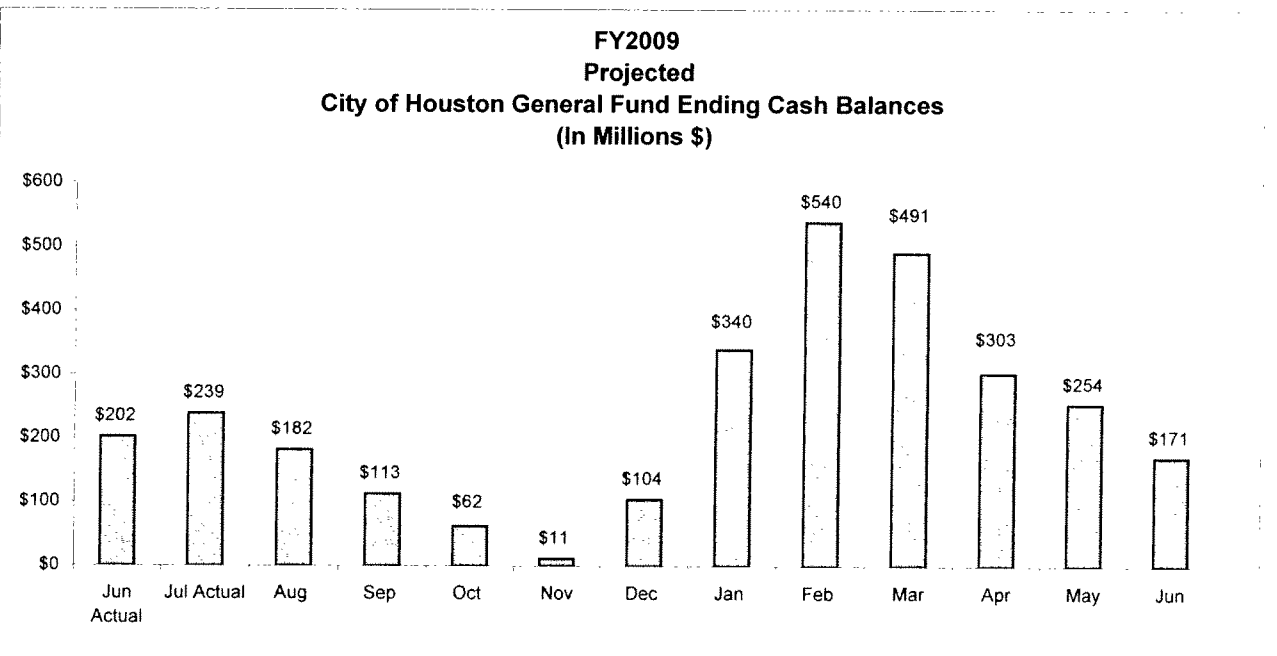
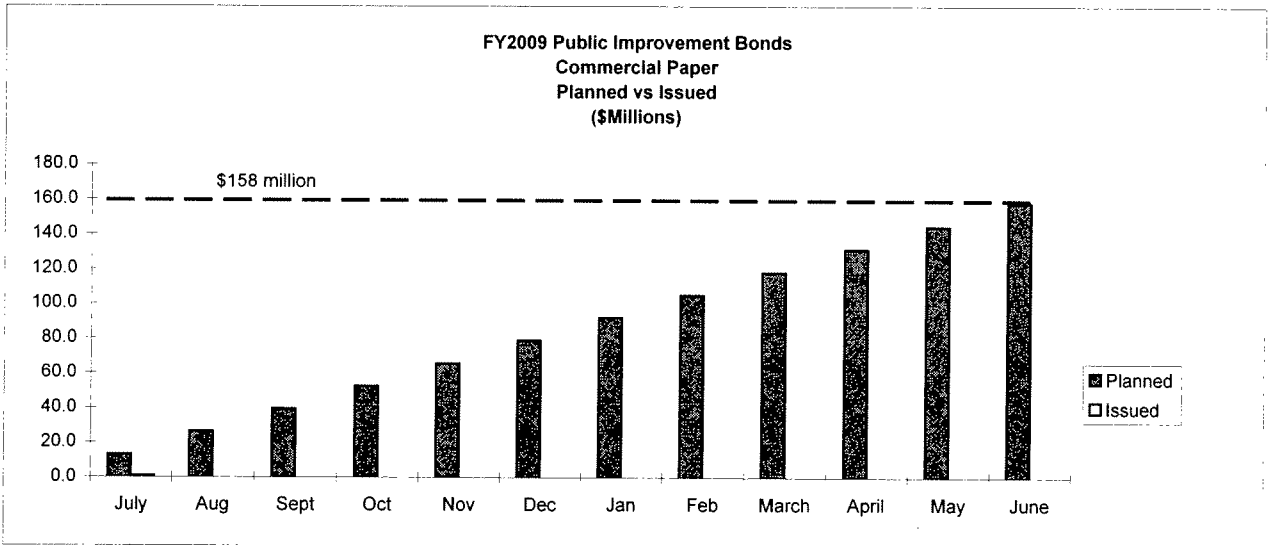
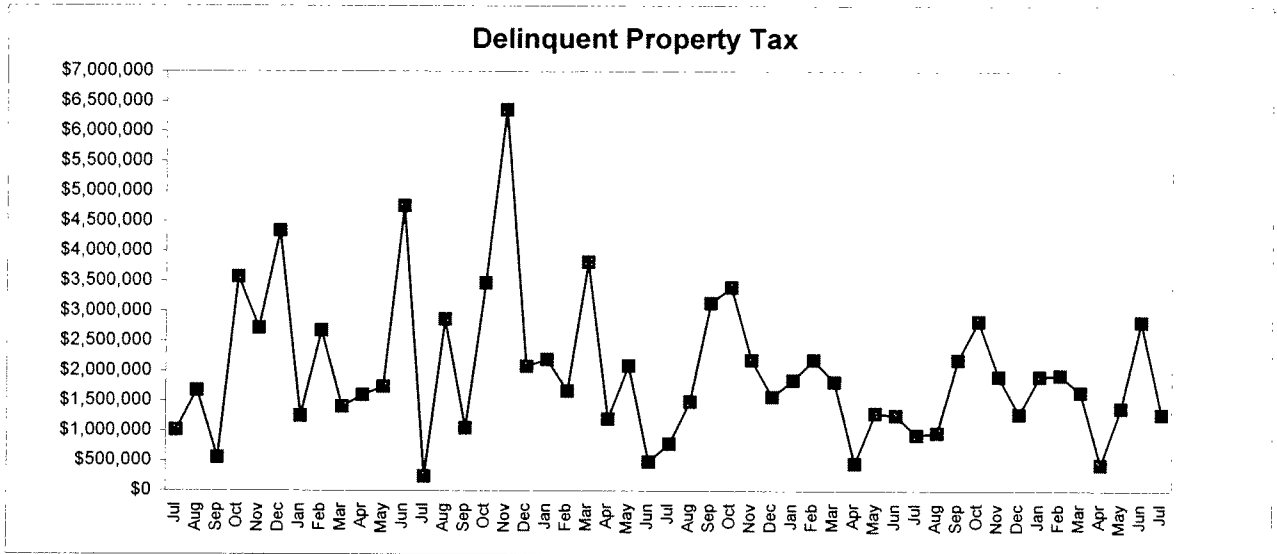
## 4 Month and 12 Month Moving Average EMS Revenue Per Transport



## EMS - Gross Collection Percentage

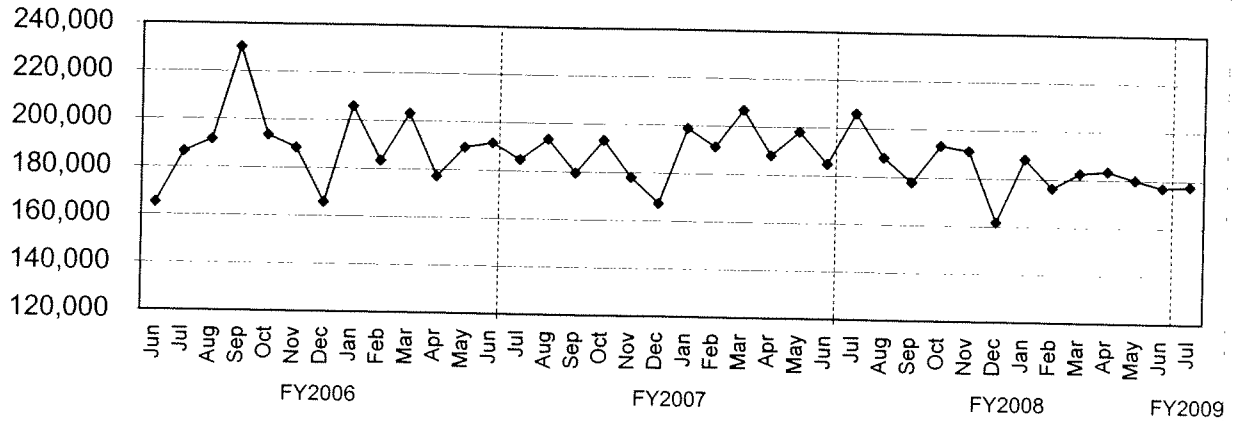


# TREND INDICATORS - MISCELLANEOUS



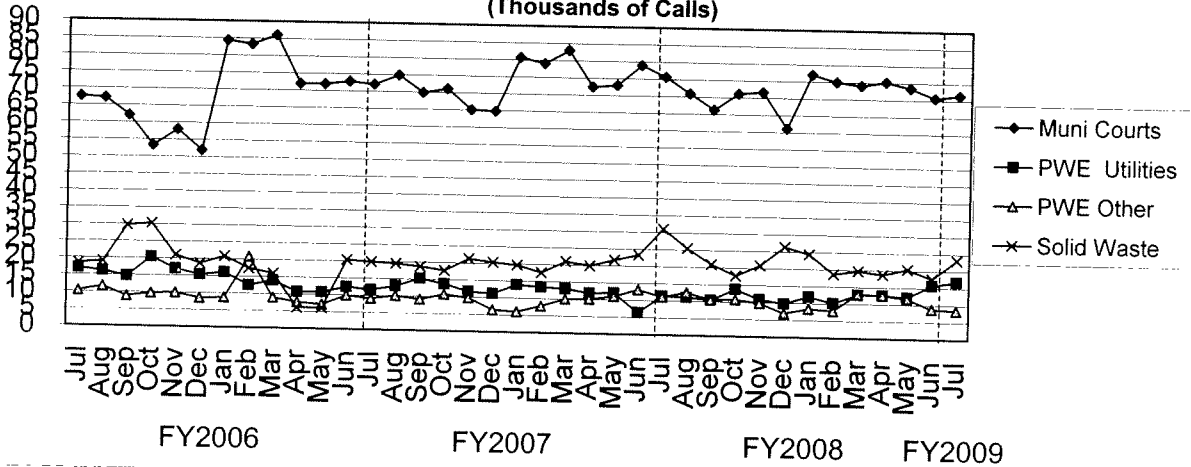
## TREND INDICATORS - MISCELLANEOUS

### 3-1-1 Call Volume



3-1-1 became fully operational in August 2001

### Operator Assisted 3-1-1 Call Distribution (Thousands of Calls)



4 largest users of operator assisted 3-1-1 calls.