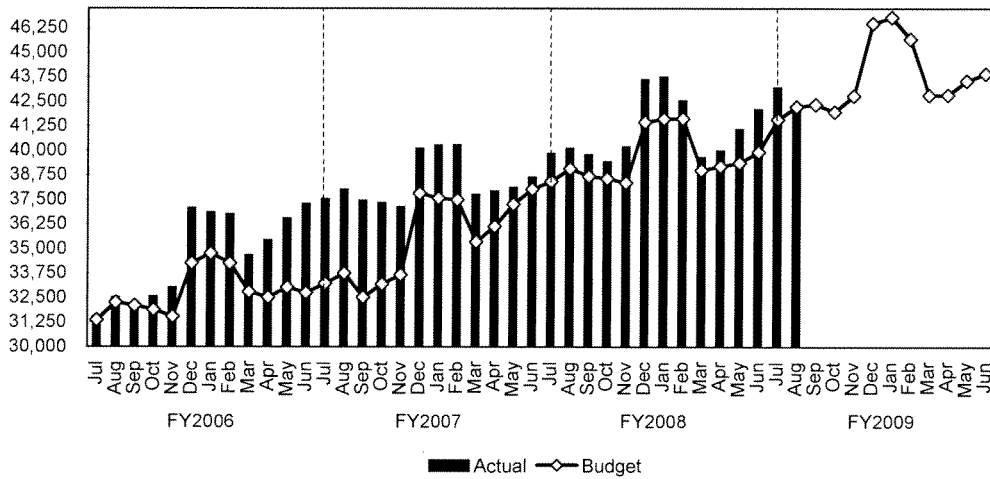


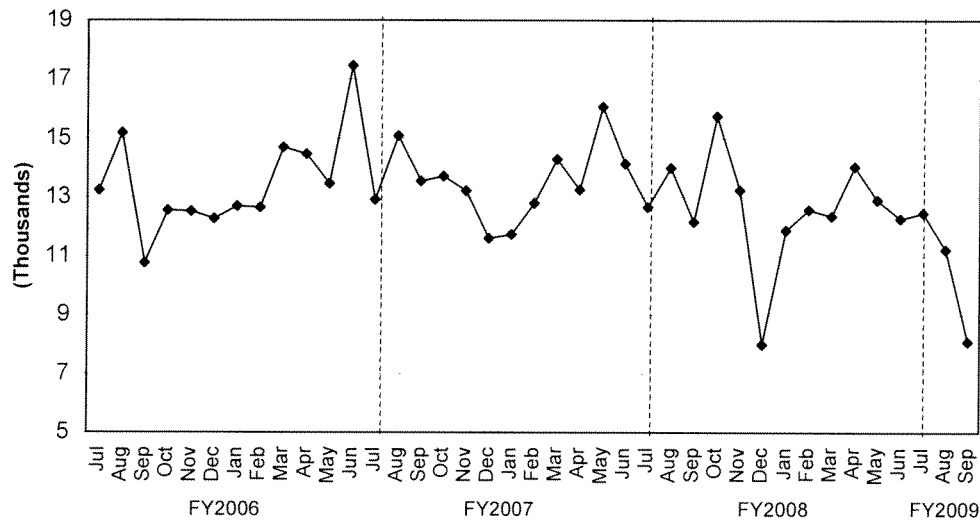
# TREND INDICATORS - LOCAL ECONOMY

## Sales Tax - Three-Month Rolling Average



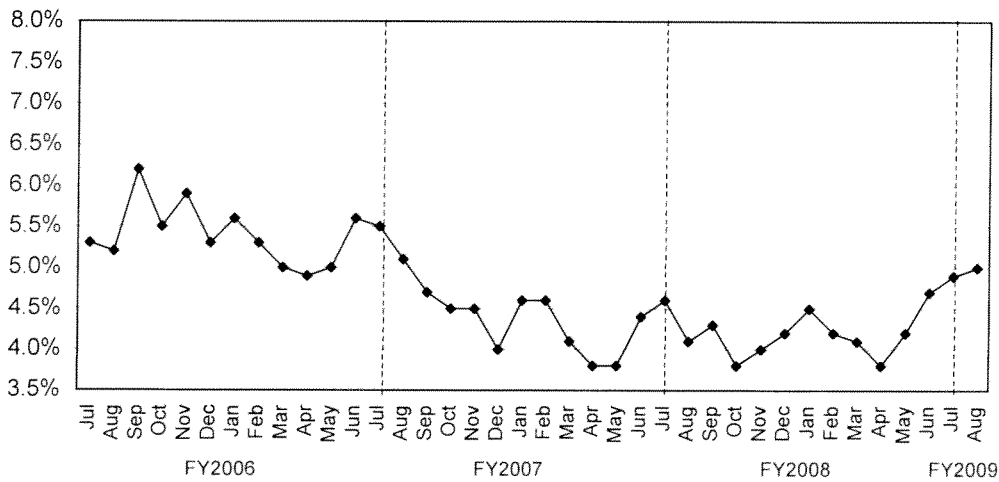
Source: Office of State Comptroller

## Building Permits Issued



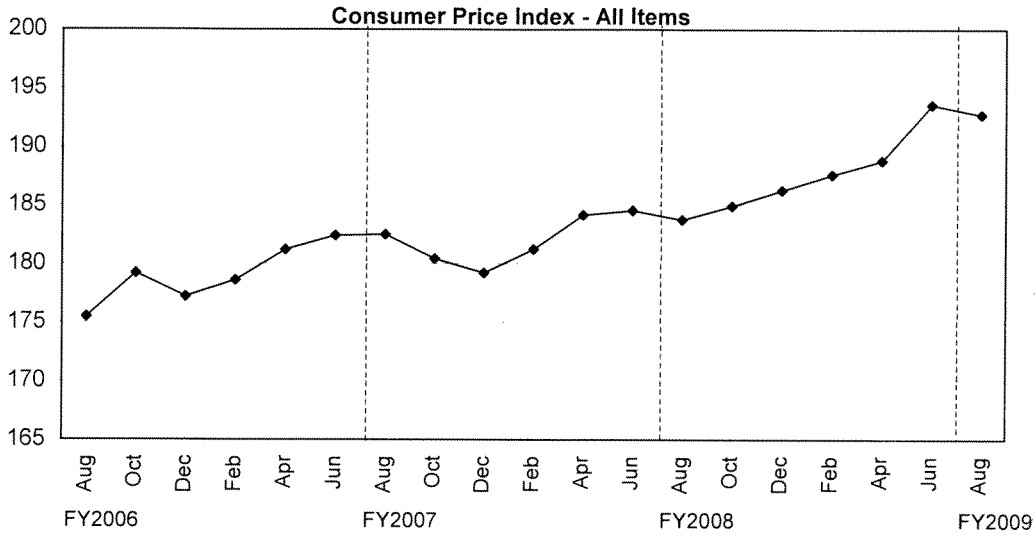
Source: City of Houston Planning and Development Department

## Unemployment Rate

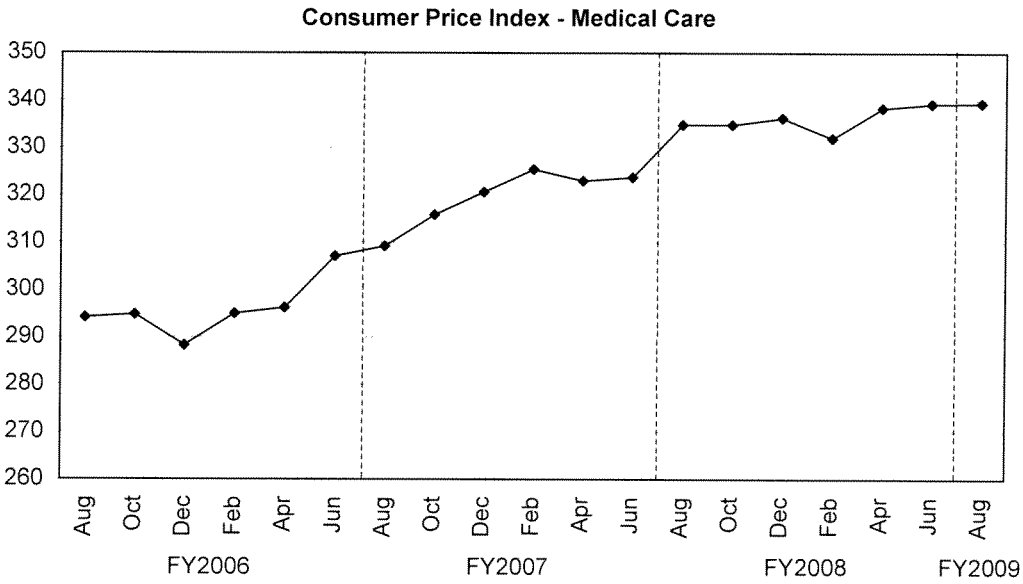


Source: Databook Houston; University of Houston Center for Public Policy; not seasonally adjusted

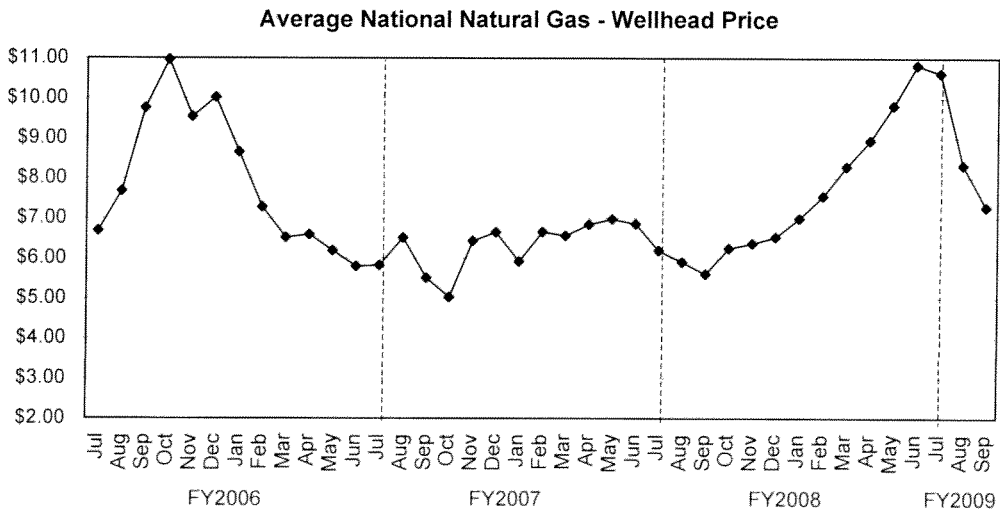
## TREND INDICATORS - LOCAL ECONOMY



Source: Bureau of Labor Statistics - Houston, Galveston, Brazoria TX

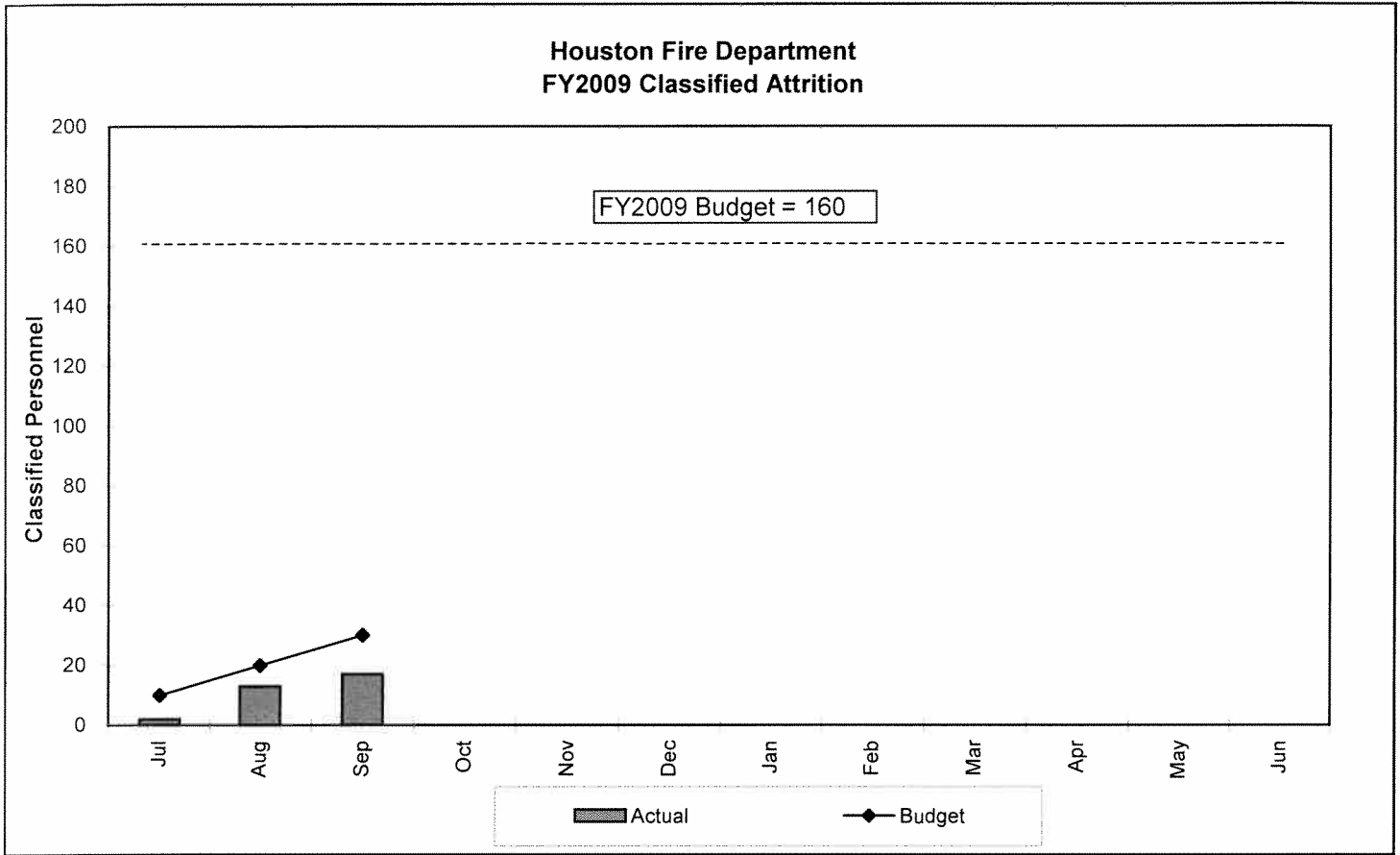


Source: Bureau of Labor Statistics - Houston, Galveston, Brazoria TX

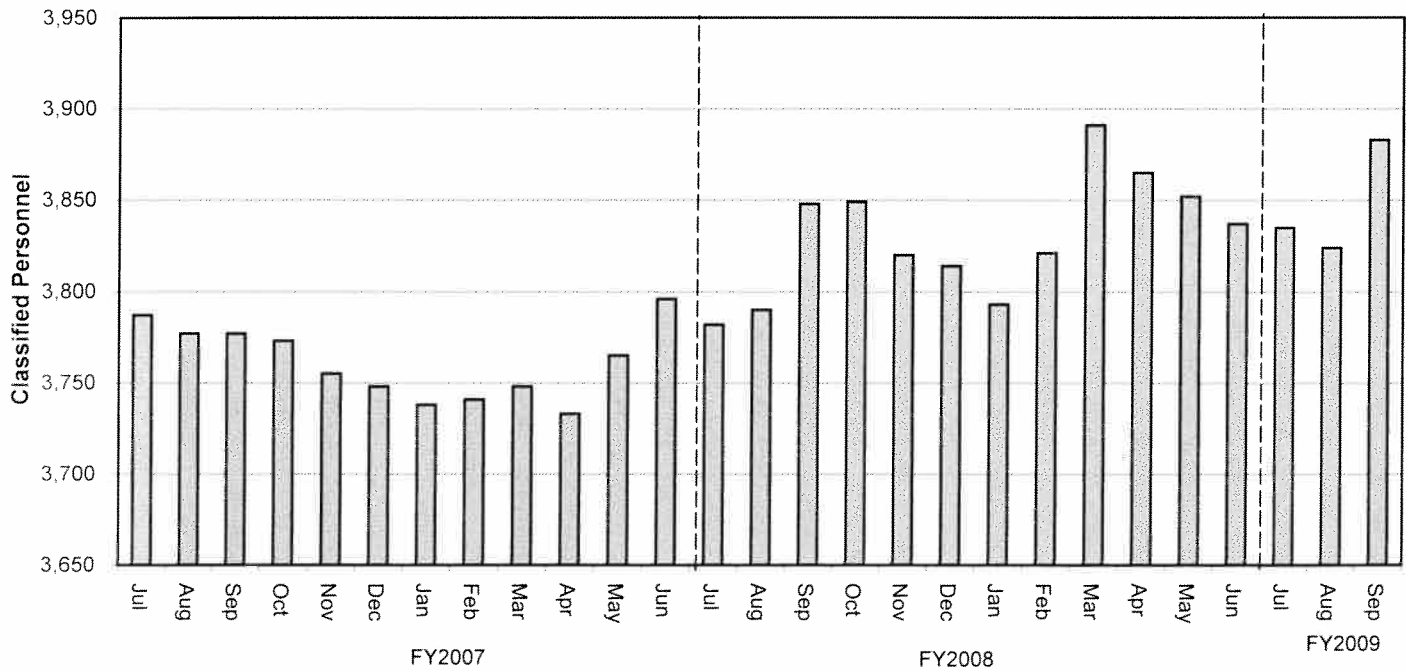


Source: Energy Information Administration/Natural Gas Monthly

# TREND INDICATORS - RETIREMENTS

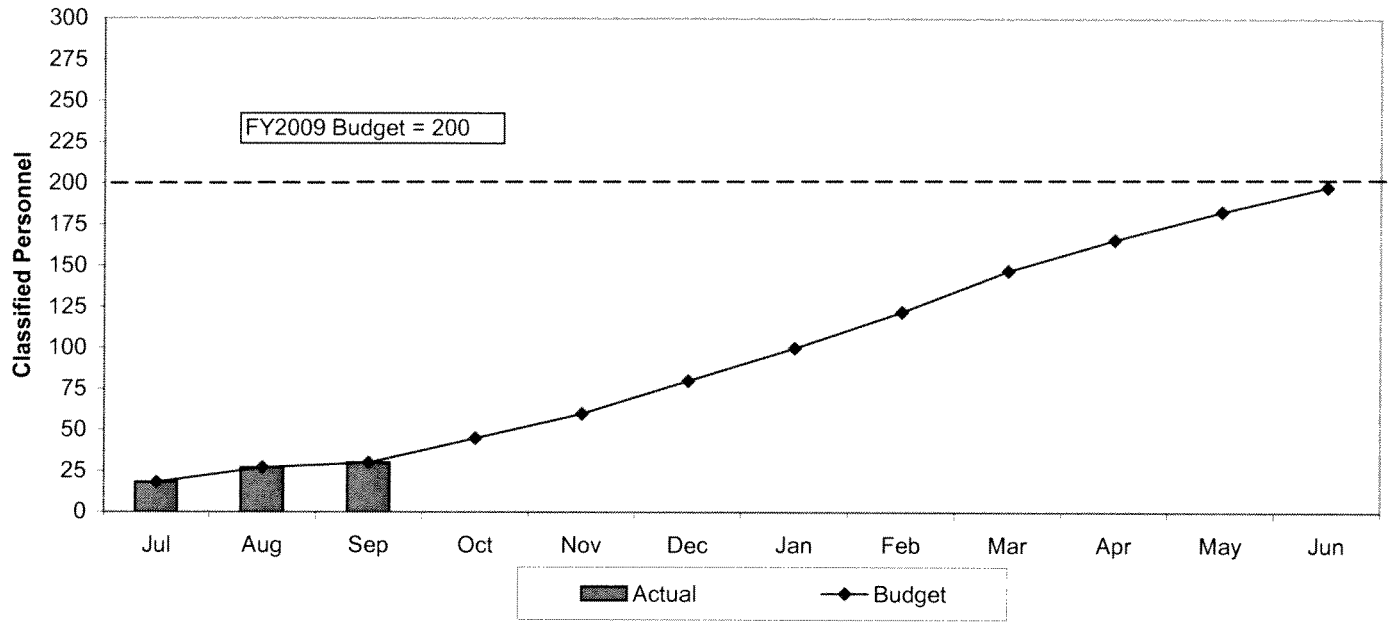


### Houston Fire Department Classified Staffing - FY2007 to FY2009

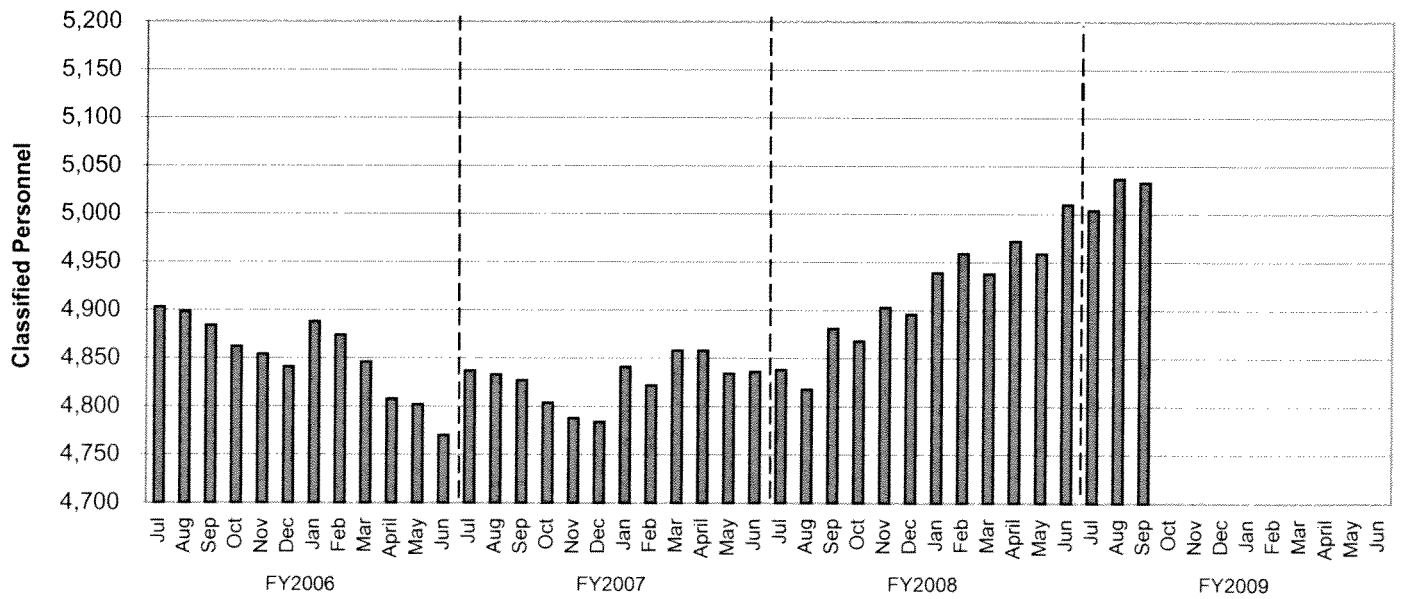


## TREND INDICATORS - HIRING AND RETIREMENTS

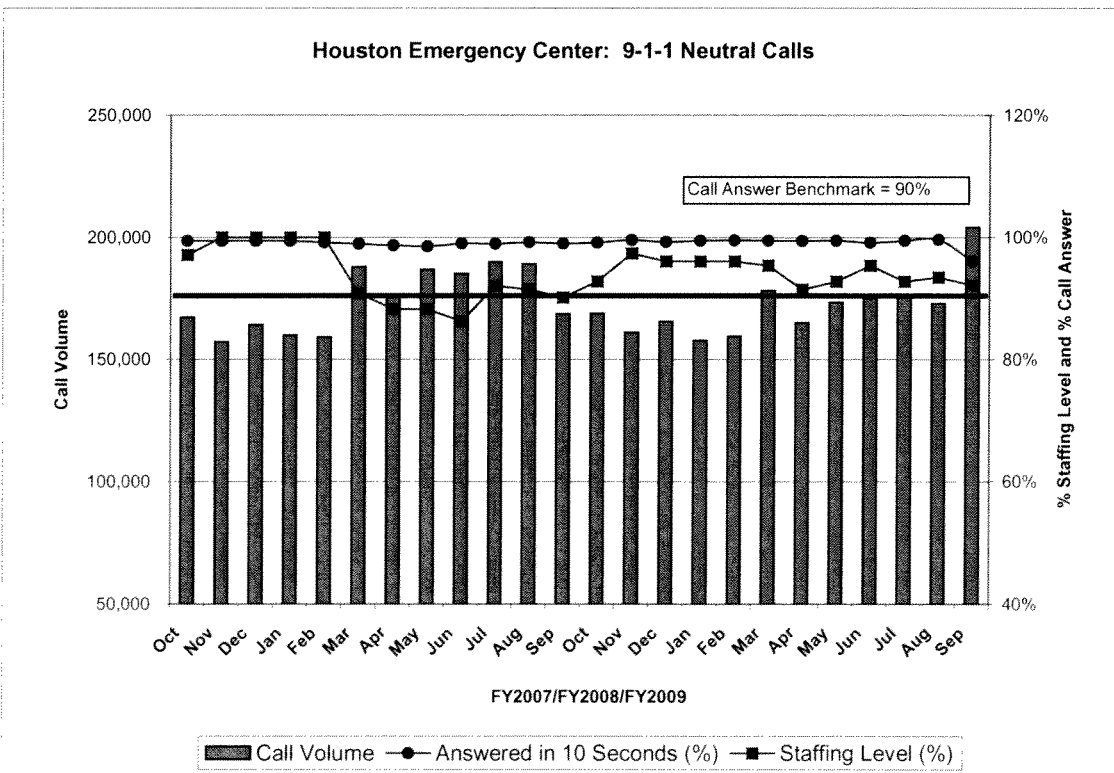
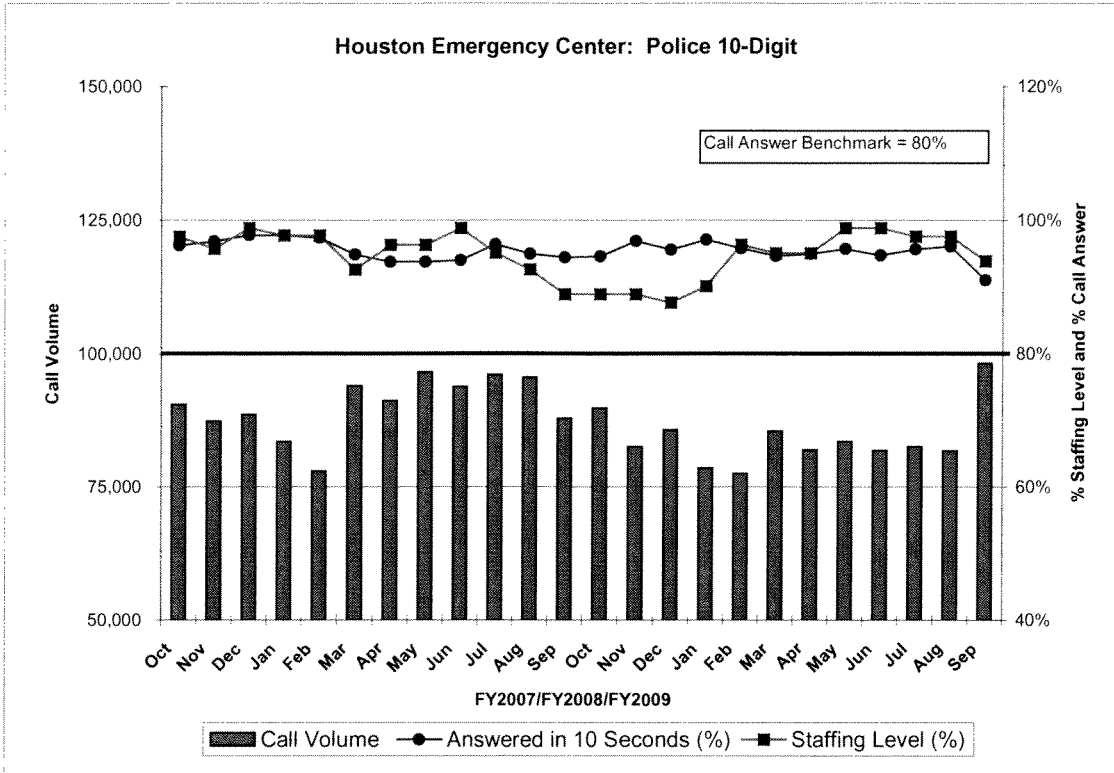
**Houston Police Department  
FY2009 Classified Attrition**



**Houston Police Department  
Classified Staffing - FY2006 to FY2009**

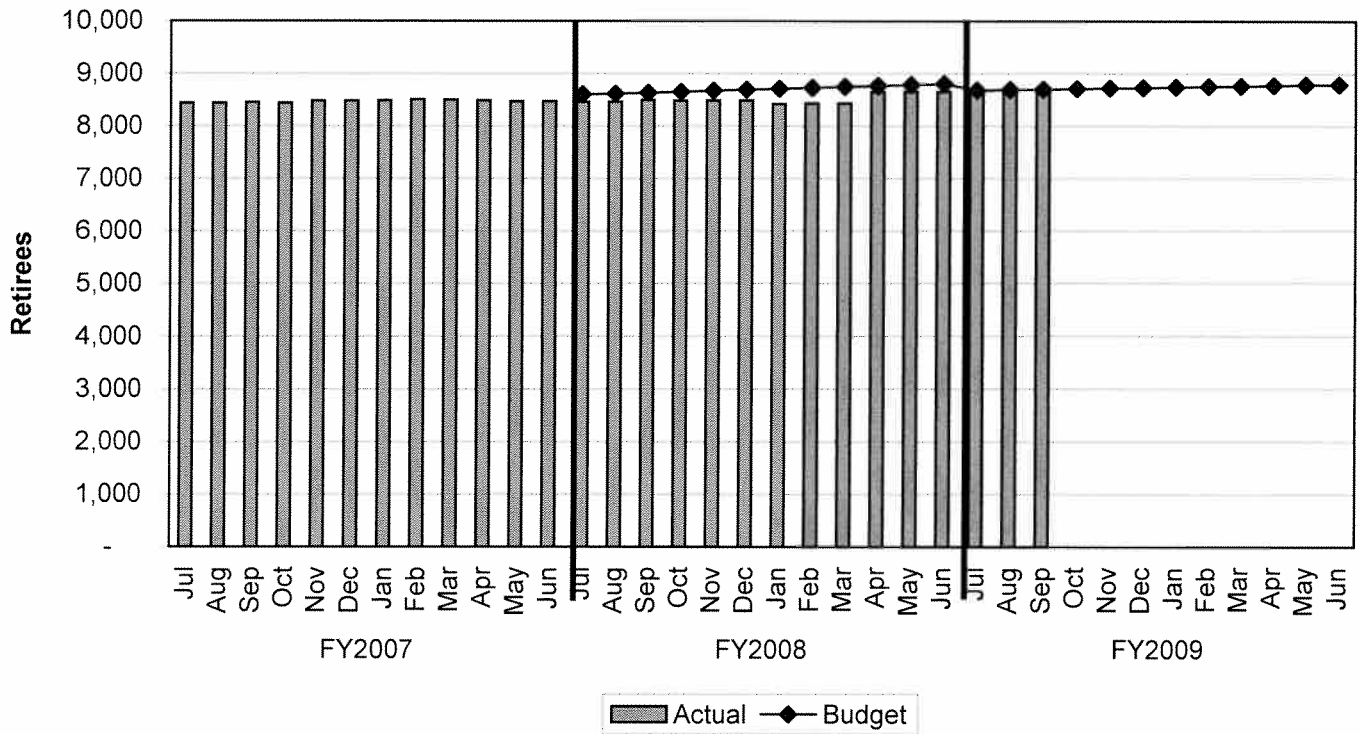


## TREND INDICATORS - HOUSTON EMERGENCY CENTER



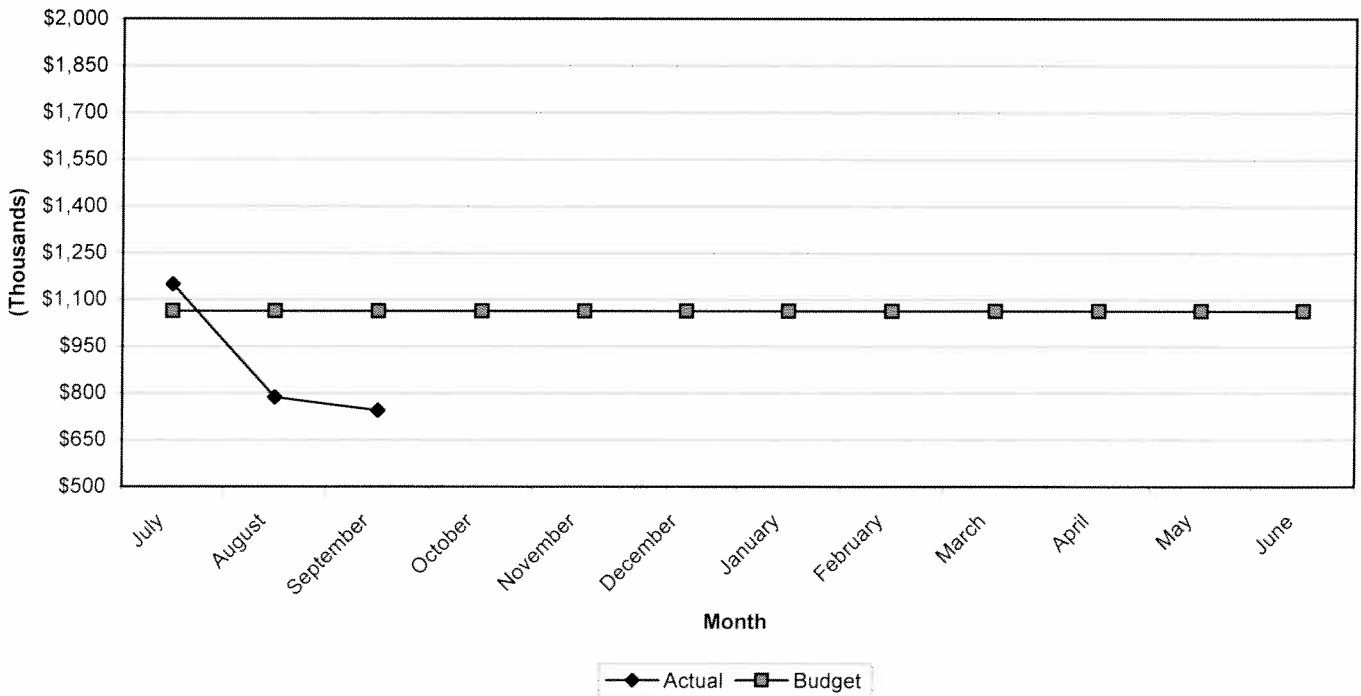
## TREND INDICATORS - RETIREMENTS

### Retirees Receiving Health Benefits



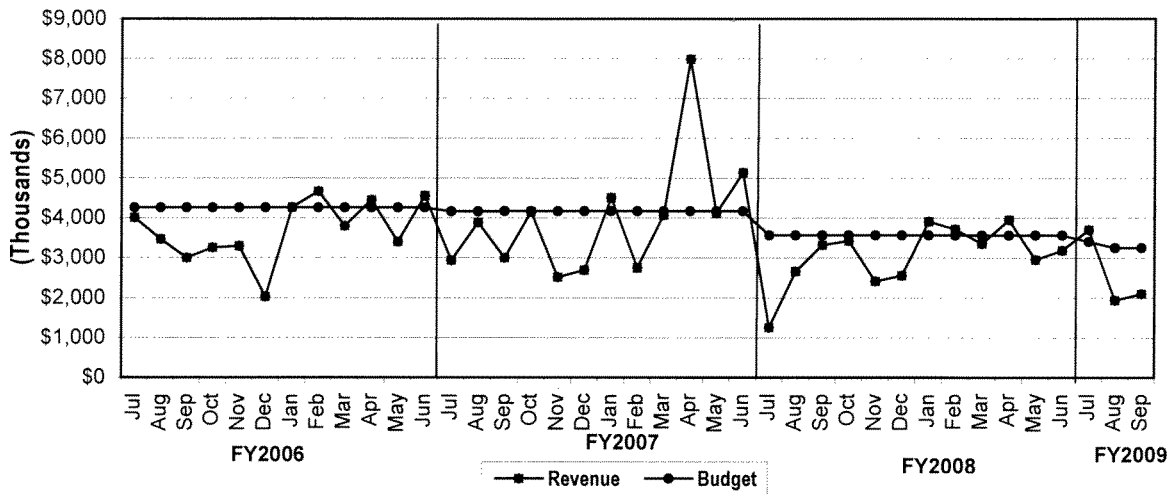
## TREND INDICATORS - PARKING MANAGEMENT

### Total Parking Management Revenue



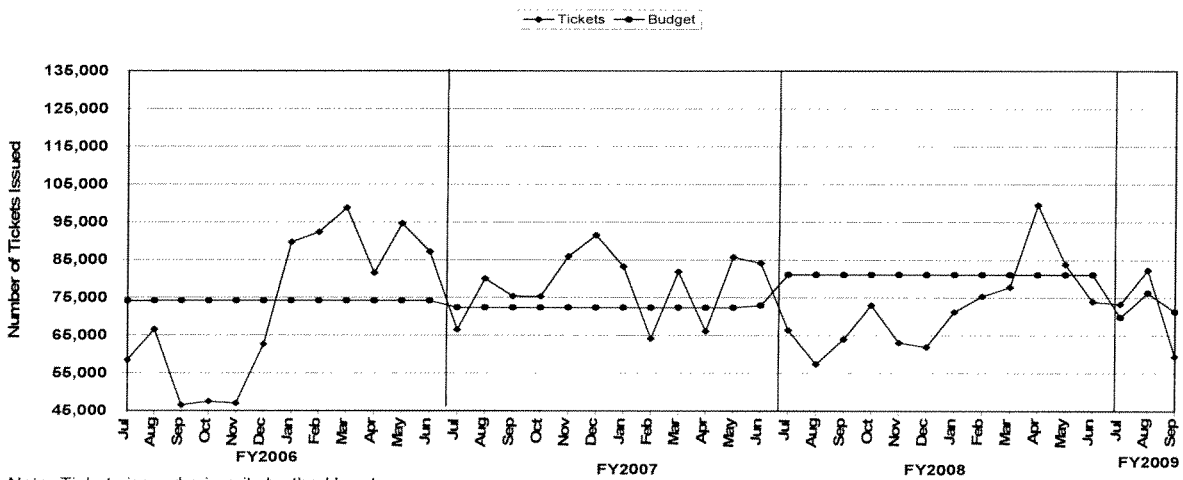
# TREND INDICATORS - MUNICIPAL COURTS

## Total Municipal Courts Revenue



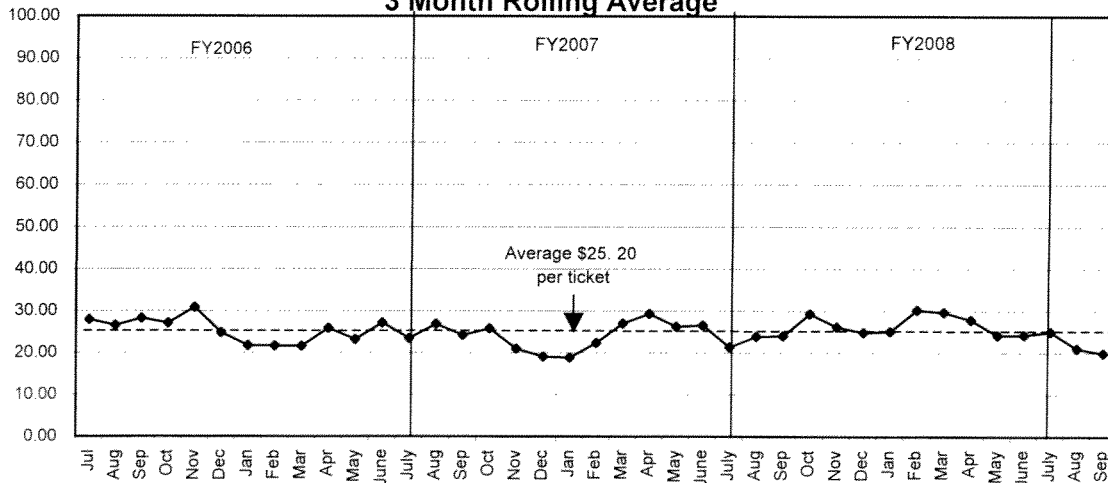
FY2008 & FY2009 does not include Parking Revenue which is now reported in the Parking Management Fund.

## Number of Traffic Citations Issued



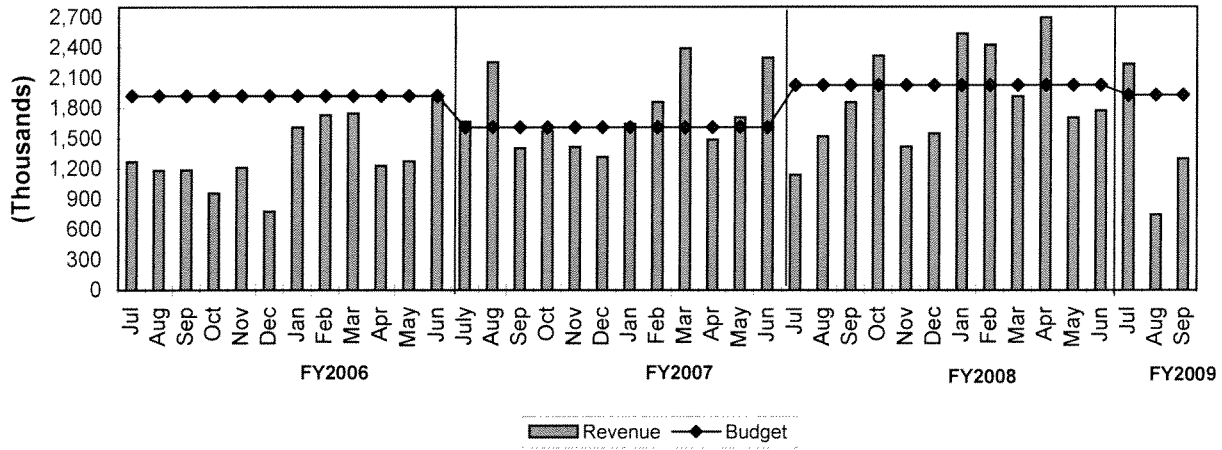
Note: Tickets issued primarily by the Houston

## Moving Violations Revenue Per Ticket Issued (427010) 3 Month Rolling Average

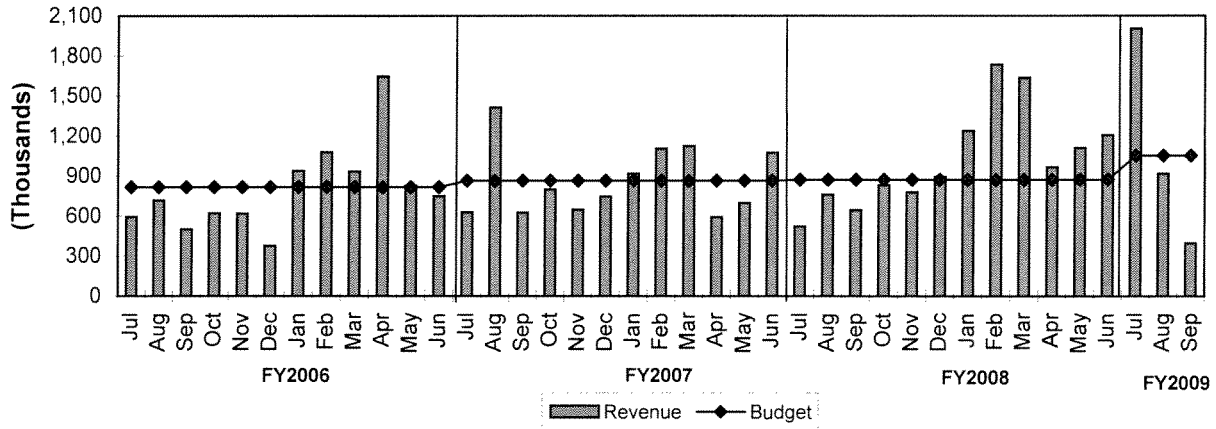


# TREND INDICATORS - MUNICIPAL COURTS

## Moving Violations Collections vs Budget

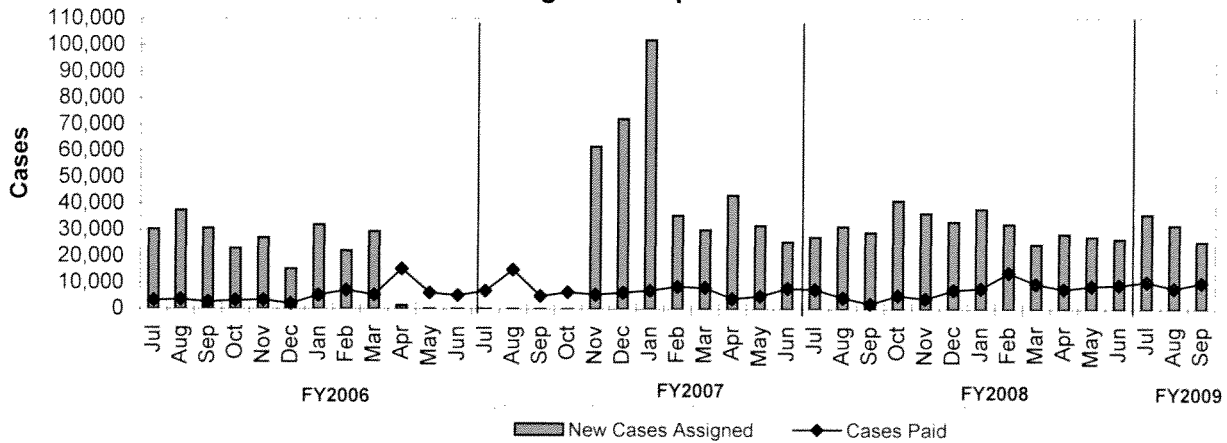


## Total Delinquent Collections vs Budget\*



\*Net of fees and expenses paid to Linebarger

## Traffic, Non-Traffic & Failure to Appear Linebarger Delinquent Collection Rates

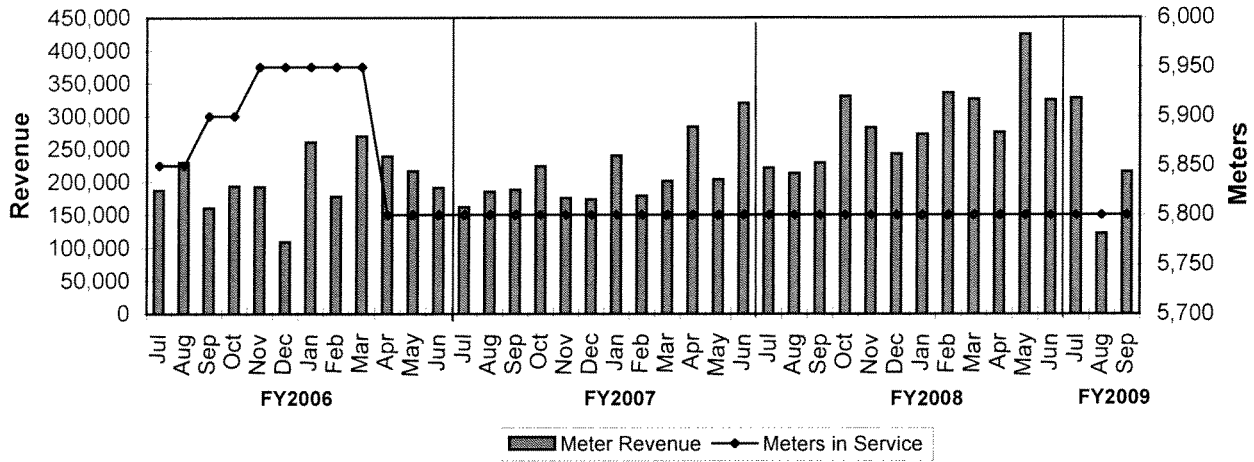


\*Excludes Delinquent Parking Collections

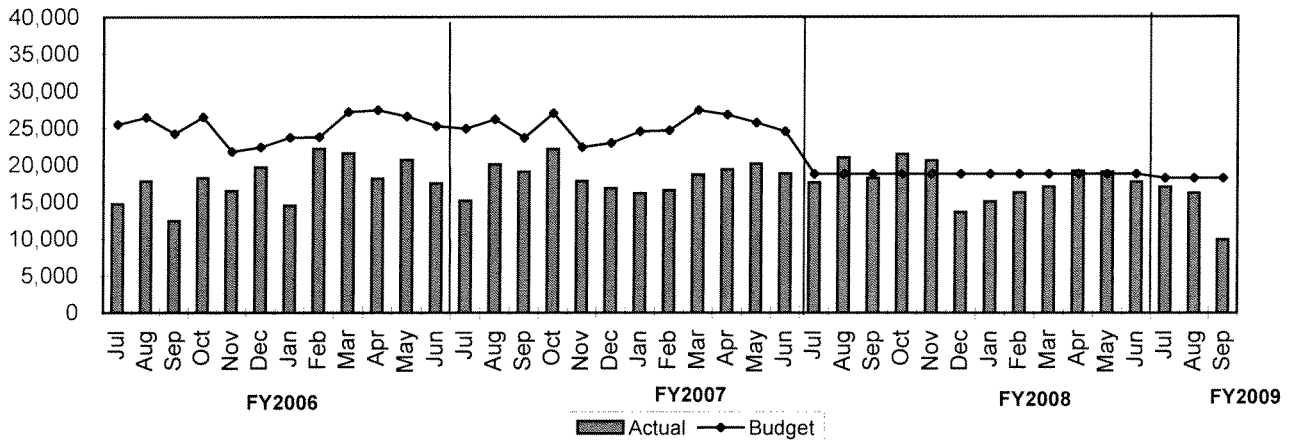


# TREND INDICATORS - MUNICIPAL COURTS

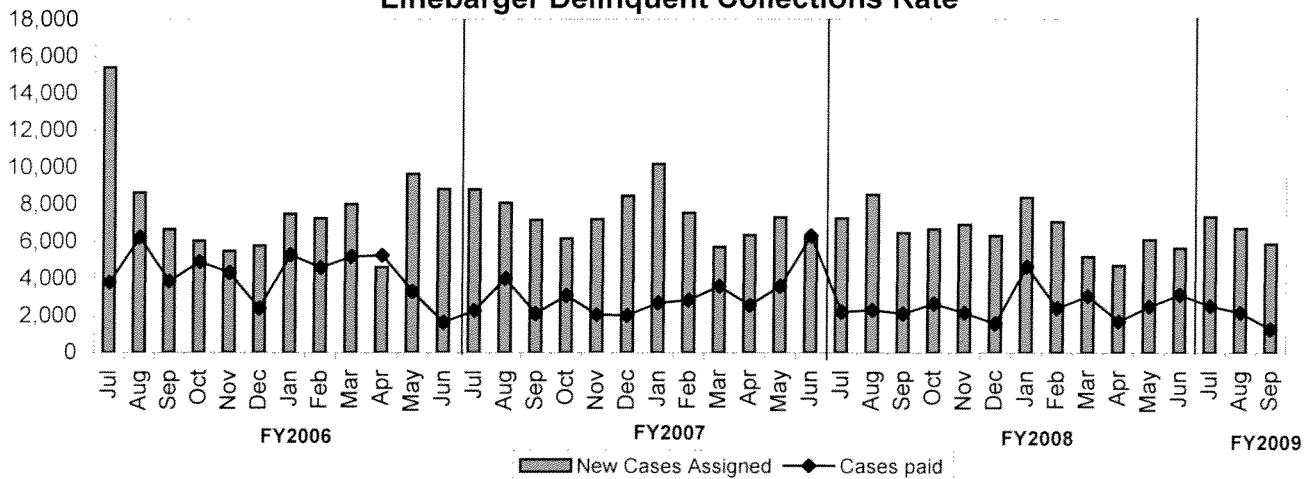
## Meter Revenue vs # Meters in Service



## Parking Violations vs Budget

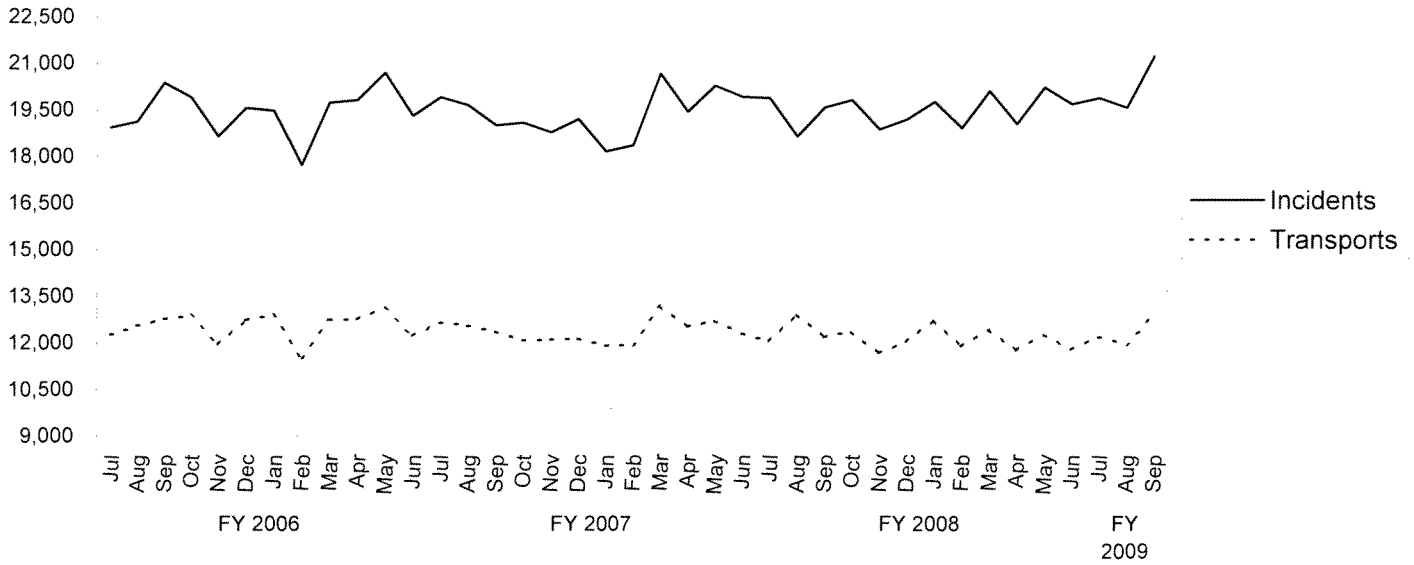


## Parking Meter Violations Linearger Delinquent Collections Rate

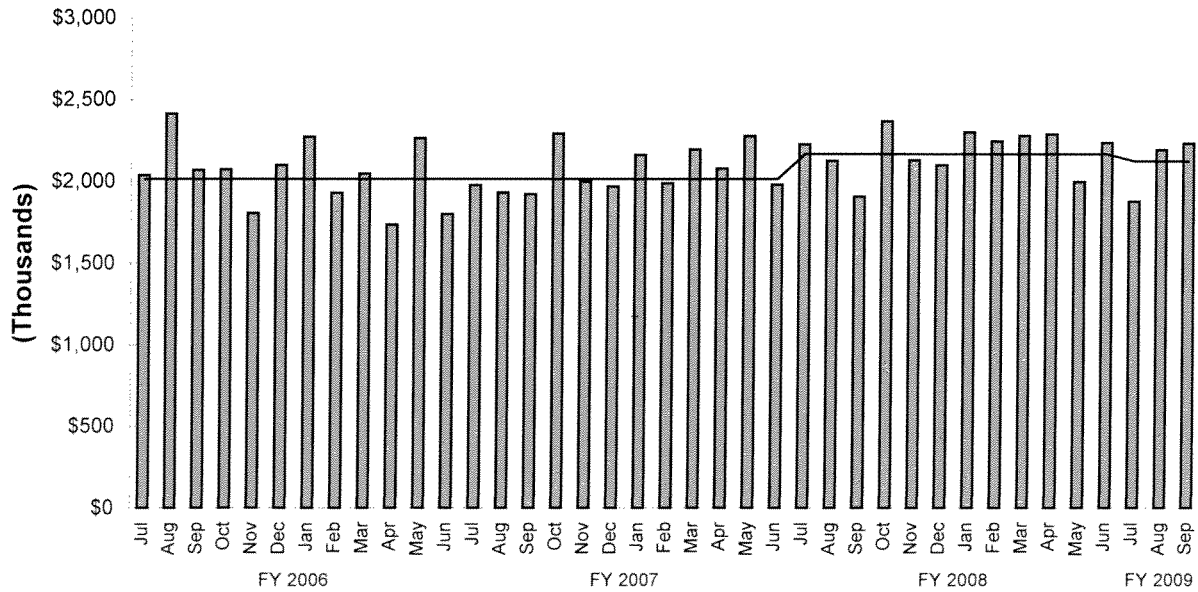


# TREND INDICATORS - AMBULANCE SERVICES

## EMS Incidents and Transports



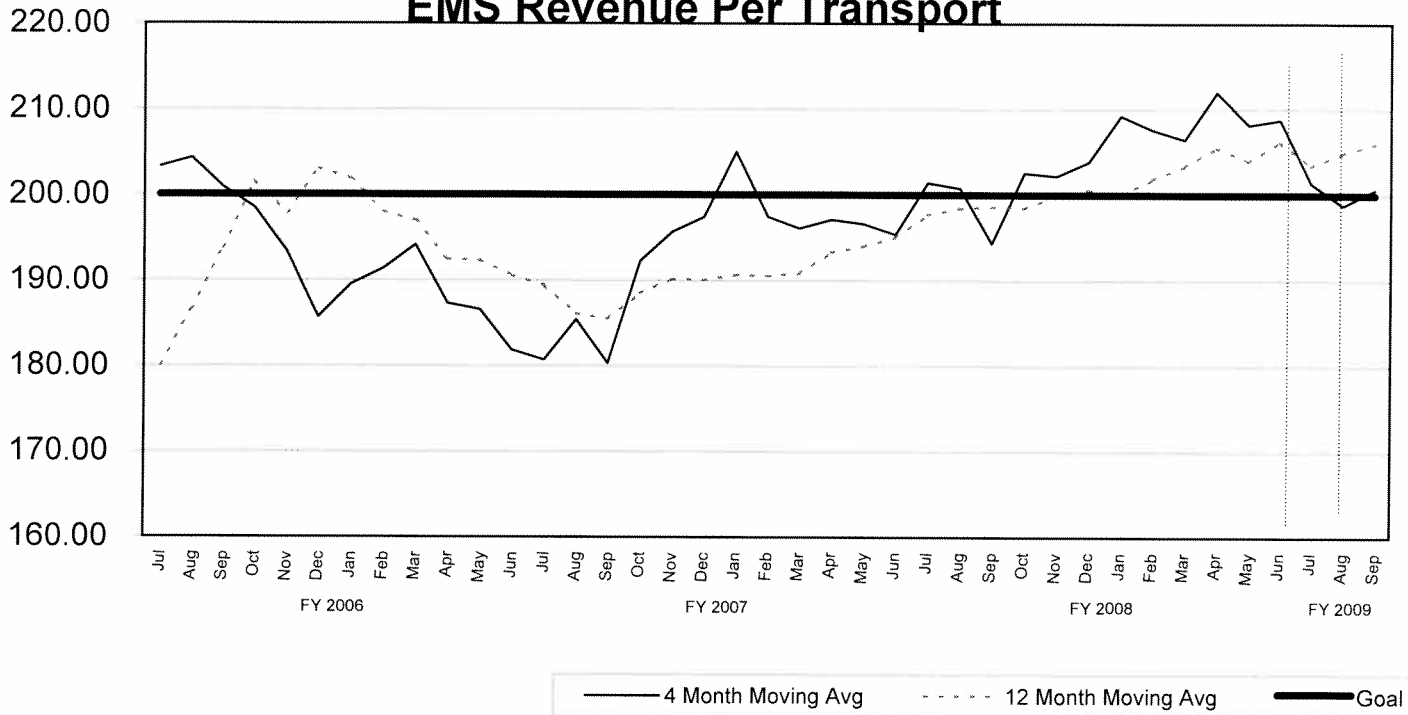
## EMS Revenue (Net Collections \*\*)



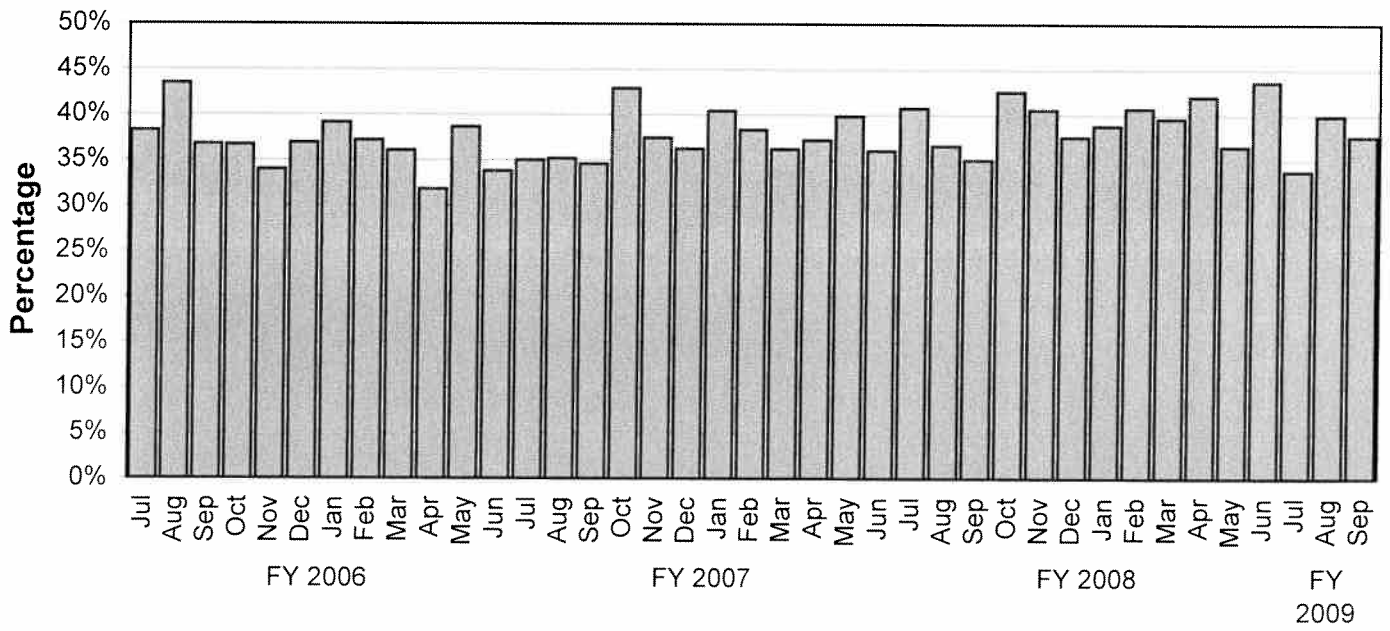
\*\* The net collections for September 2008 were computed using a 12-month average of the Contractor's Invoice

## TREND INDICATORS - AMBULANCE SERVICES

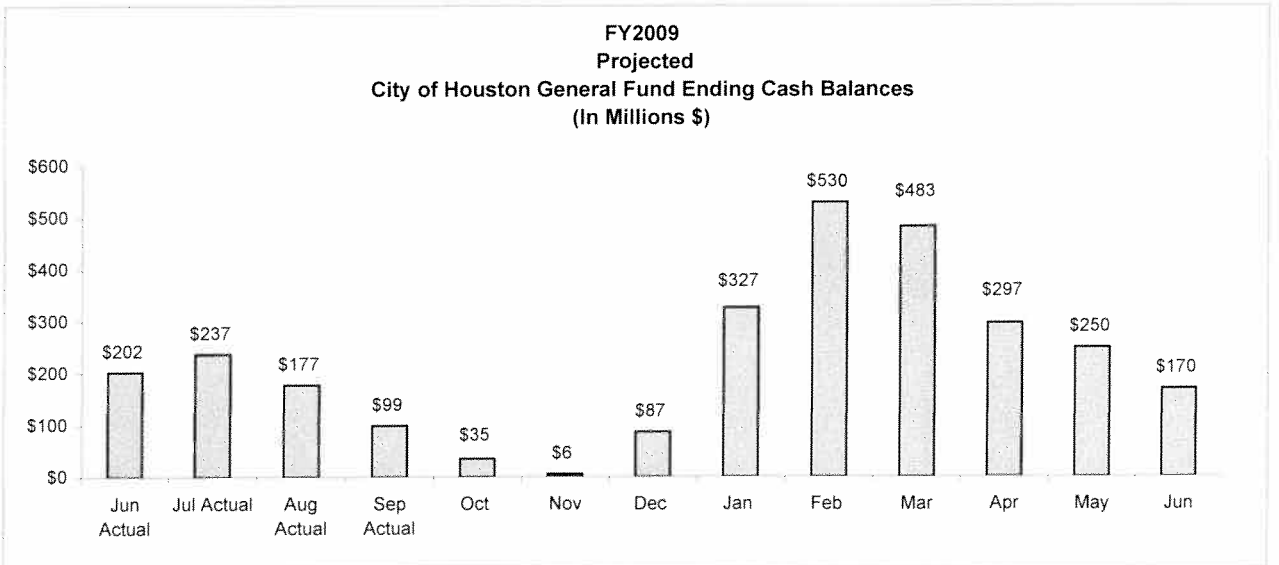
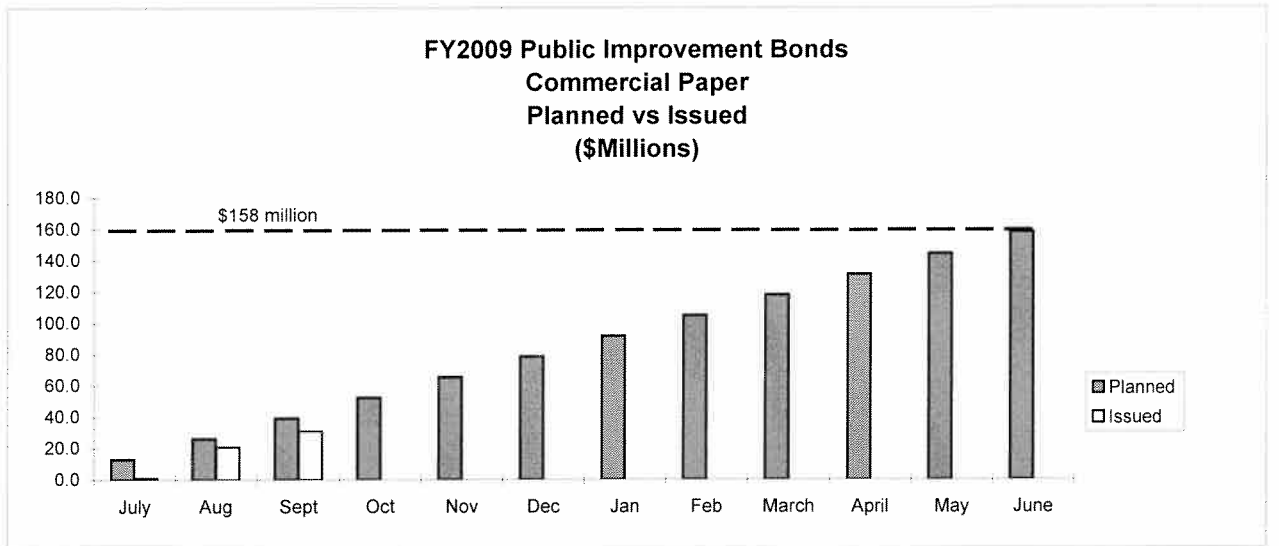
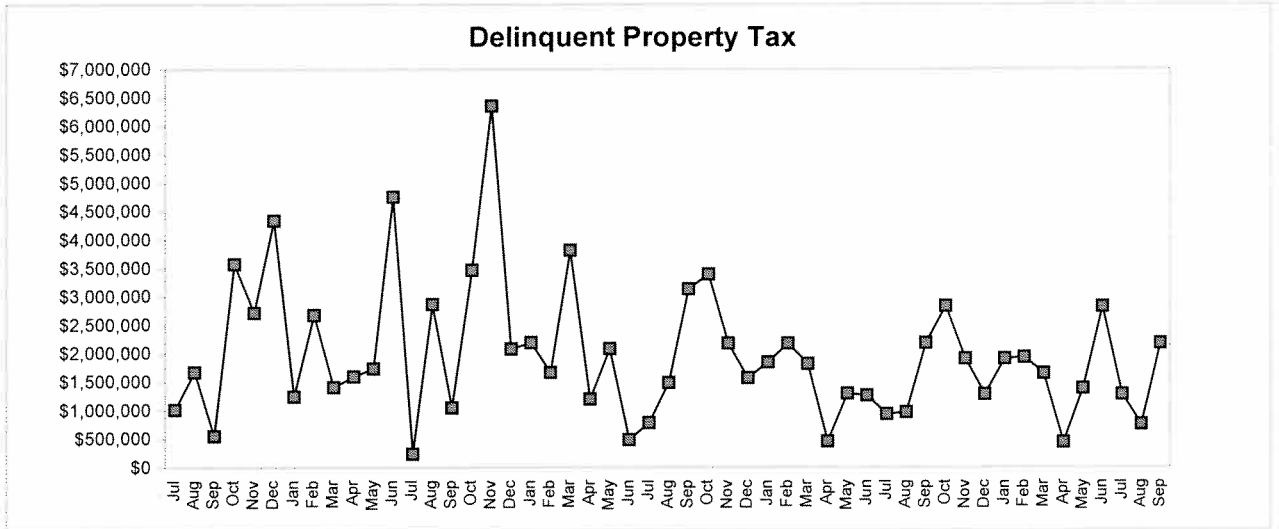
### 4 Month and 12 Month Moving Average EMS Revenue Per Transport



### EMS - Gross Collection Percentage

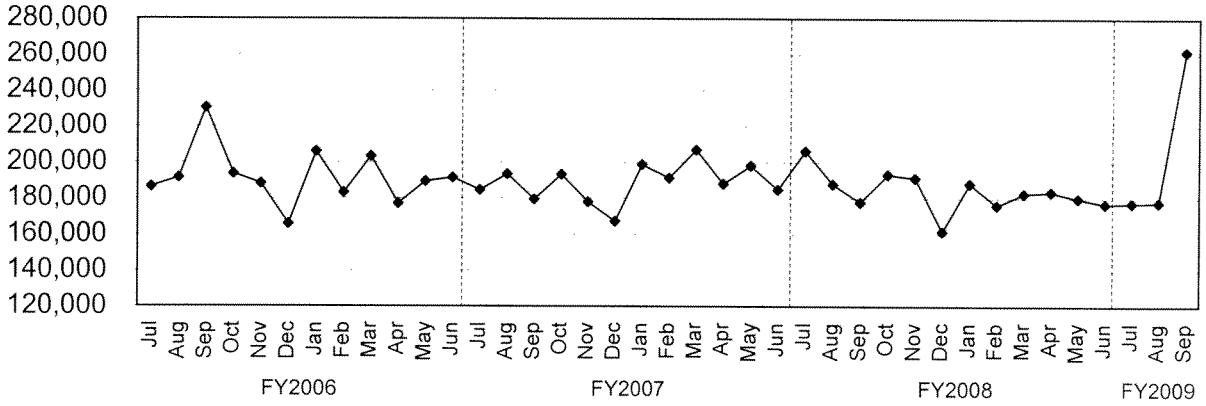


## TREND INDICATORS - MISCELLANEOUS



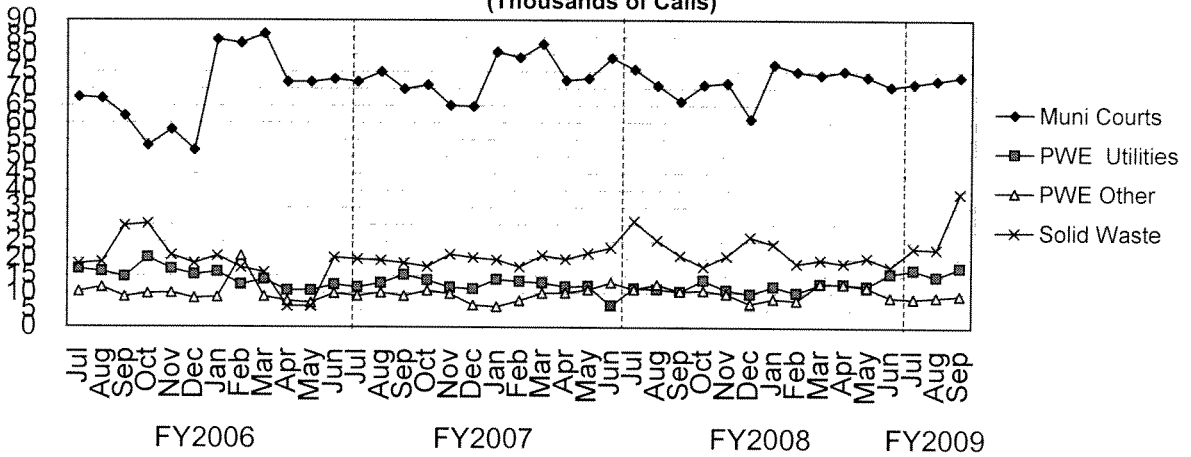
# TREND INDICATORS - MISCELLANEOUS

## 3-1-1 Call Volume



3-1-1 became fully operational in August 2001

## Operator Assisted 3-1-1 Call Distribution (Thousands of Calls)



4 largest users of operator assisted 3-1-1 calls.