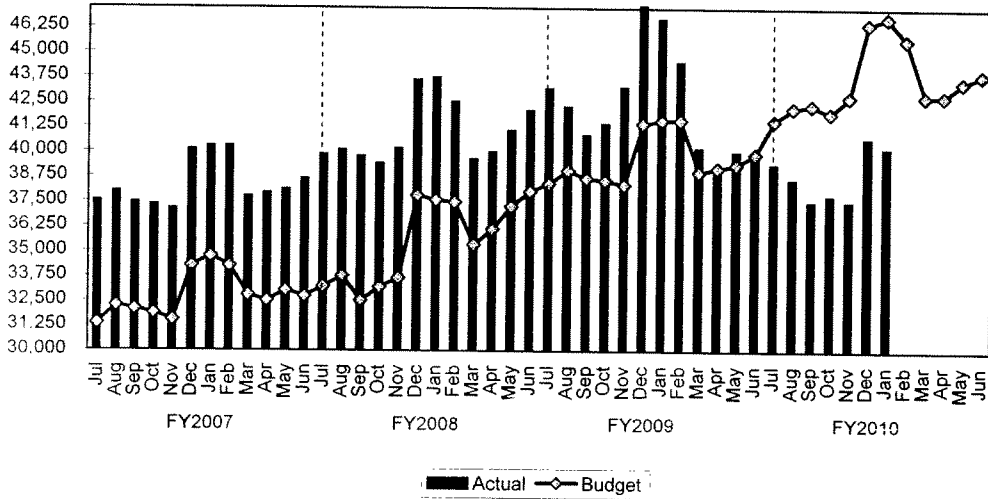


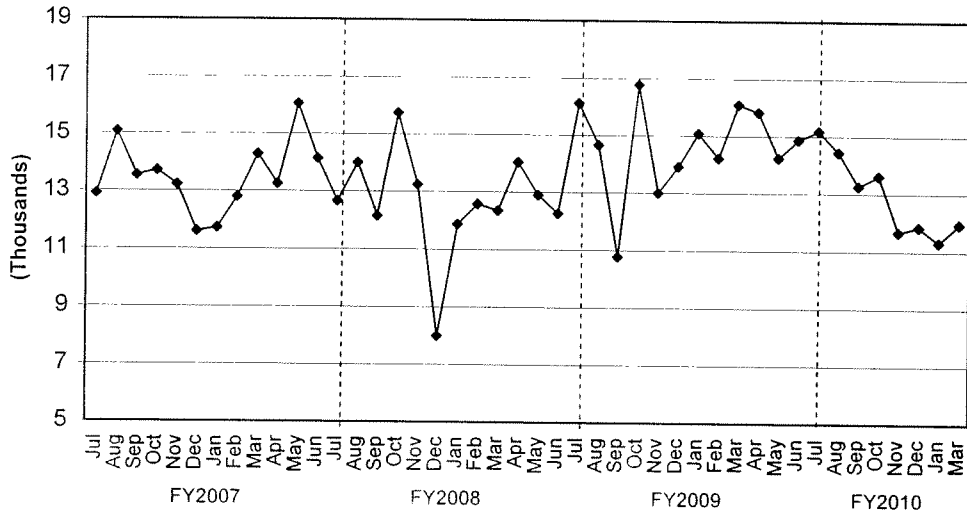
TREND INDICATORS - LOCAL ECONOMY

Sales Tax - Three-Month Rolling Average



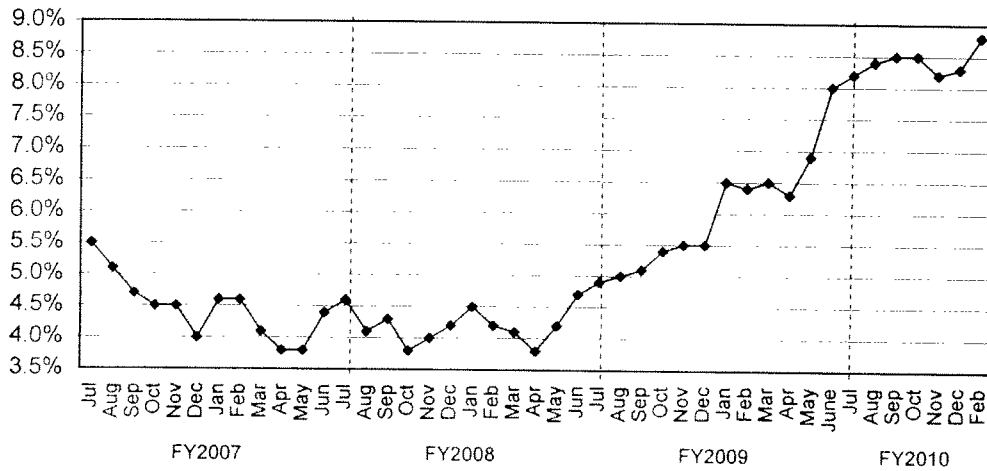
Source: Office of State Comptroller

Building Permits Issued



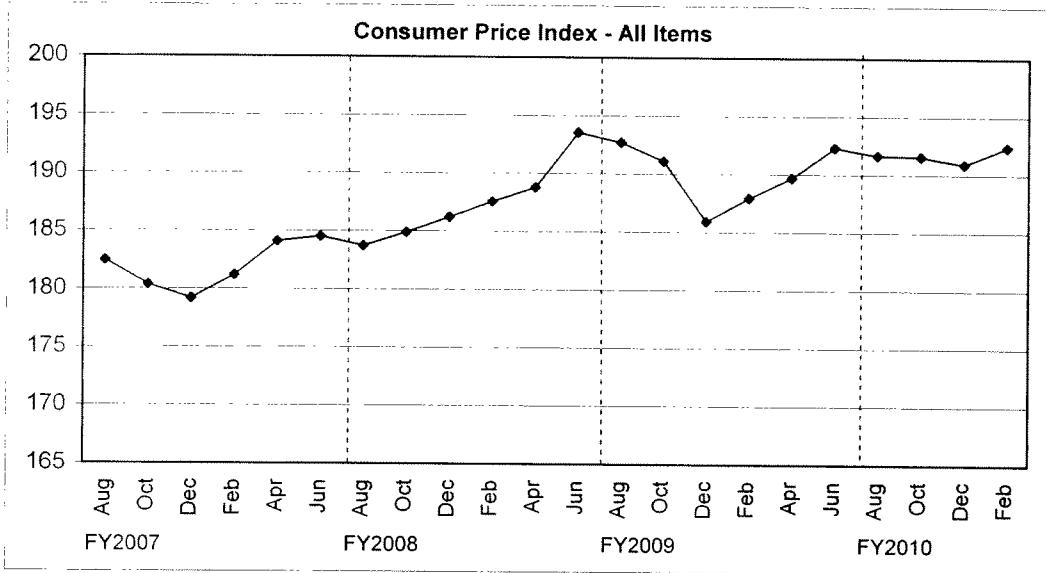
Source: City of Houston Planning and Development Department

Unemployment Rate

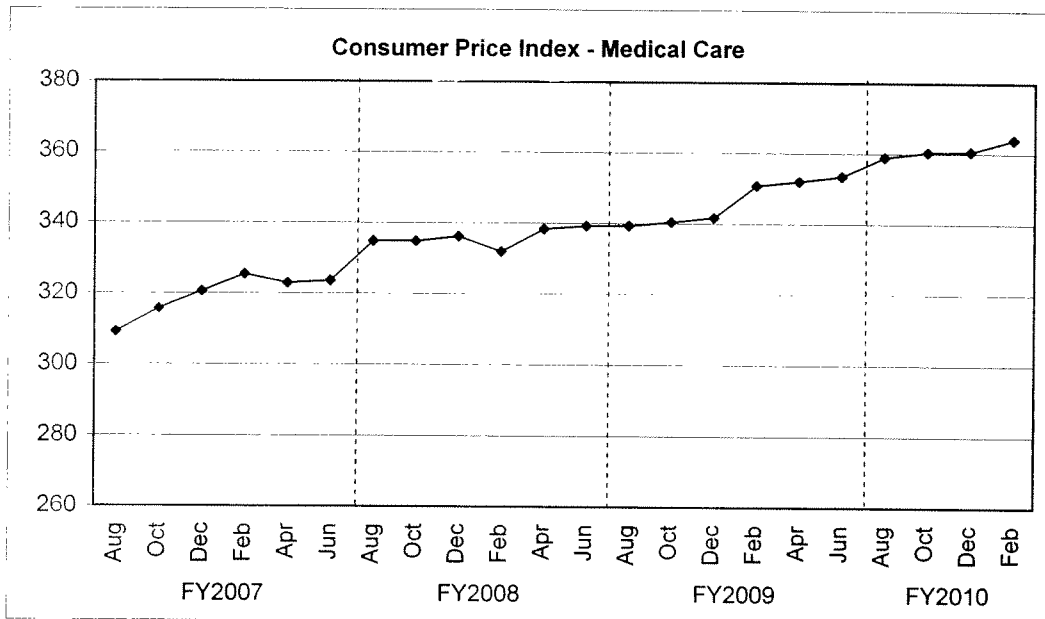


Source: Databook Houston; University of Houston Center for Public Policy; not seasonally adjusted

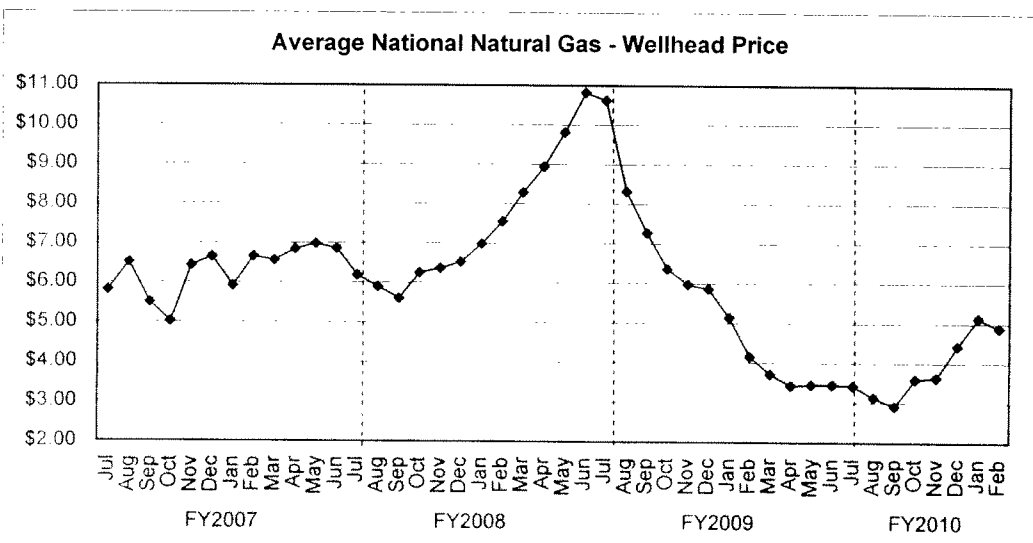
TREND INDICATORS - LOCAL ECONOMY



Source: Bureau of Labor Statistics - Houston, Galveston, Brazoria TX



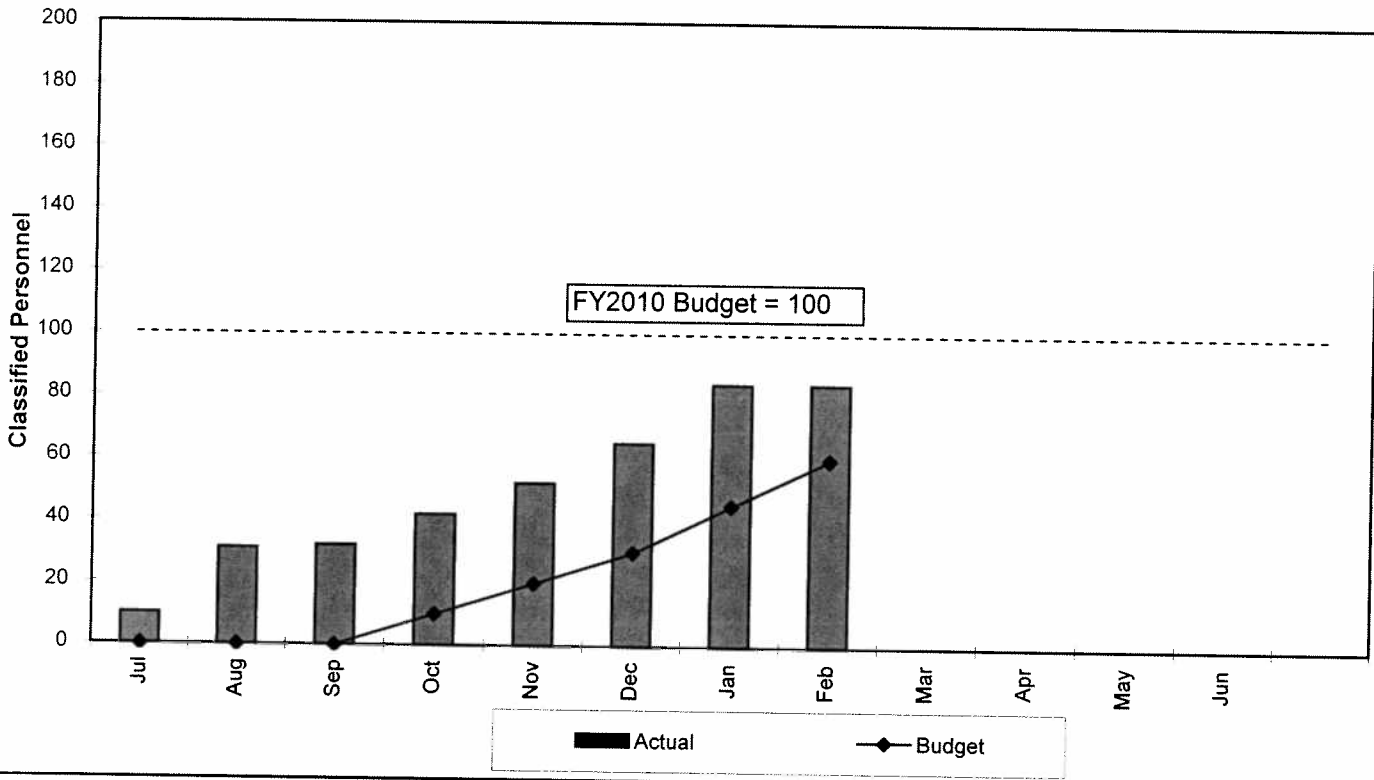
Source: Bureau of Labor Statistics - Houston, Galveston, Brazoria TX



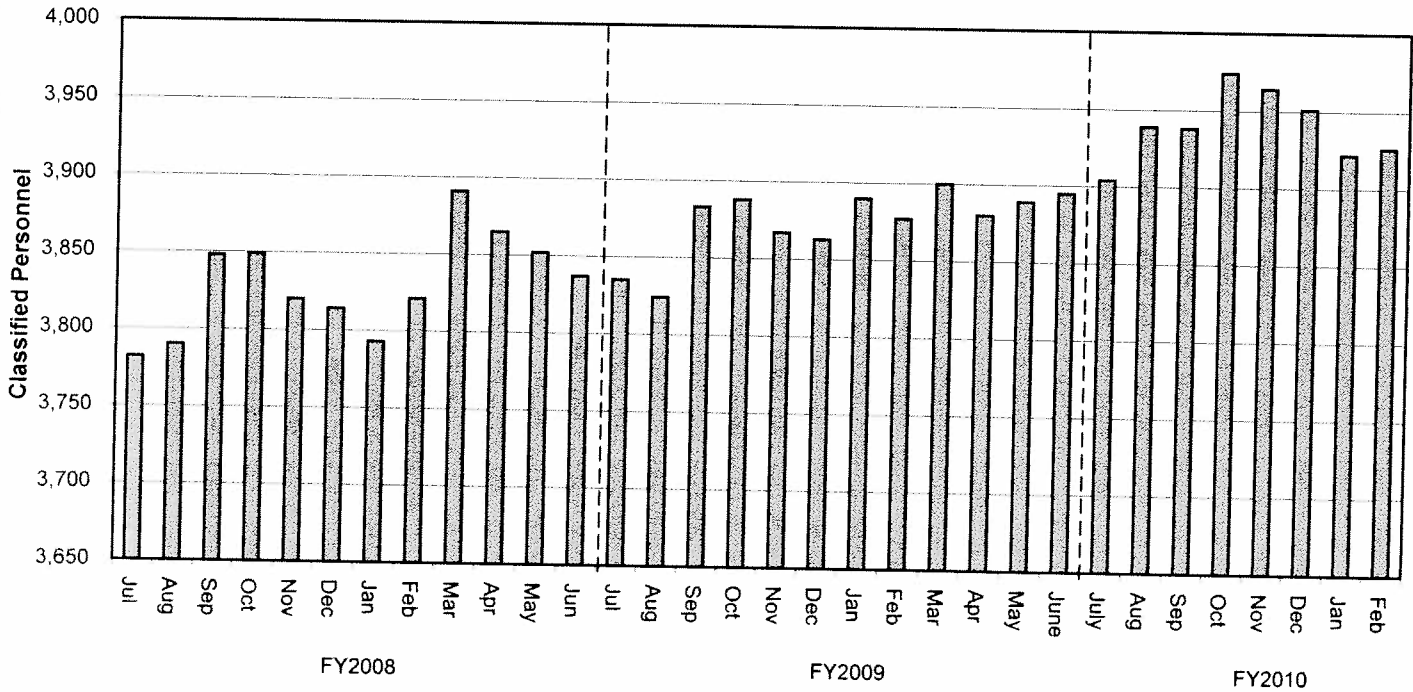
Source: Energy Information Administration/Natural Gas Monthly

TREND INDICATORS - RETIREMENTS

Houston Fire Department
FY2010 Classified Attrition

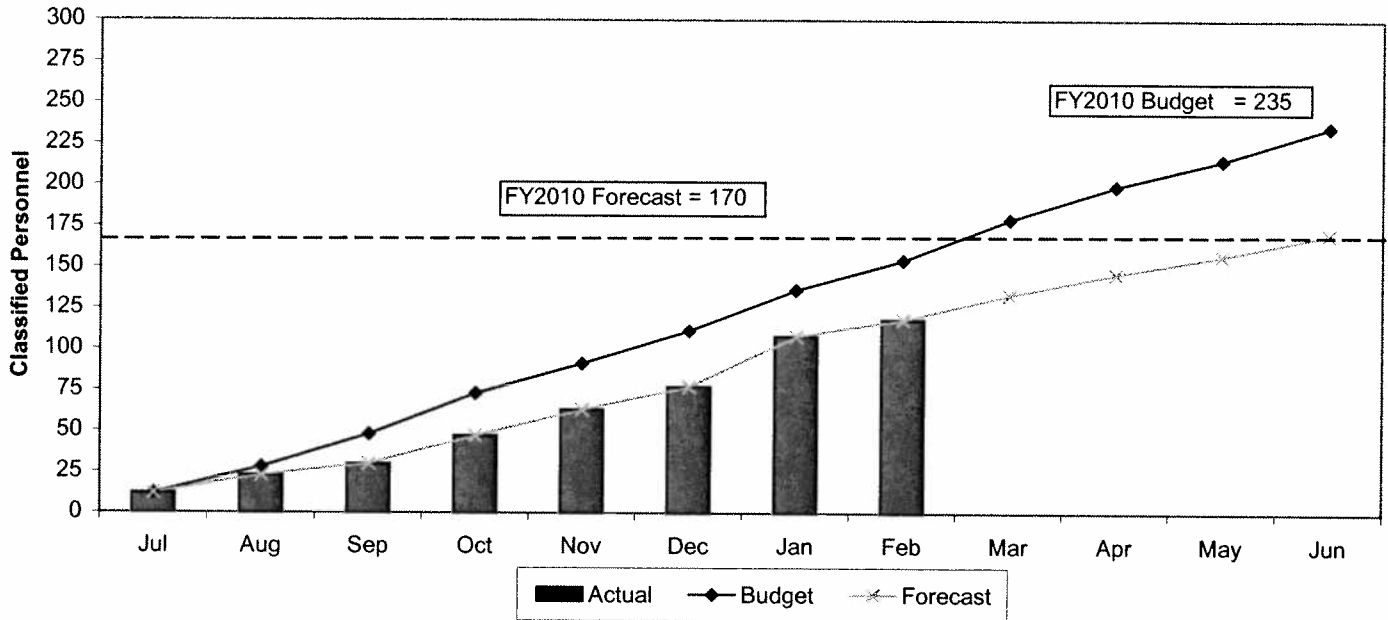


Houston Fire Department
Classified Staffing - FY2008 to FY2010

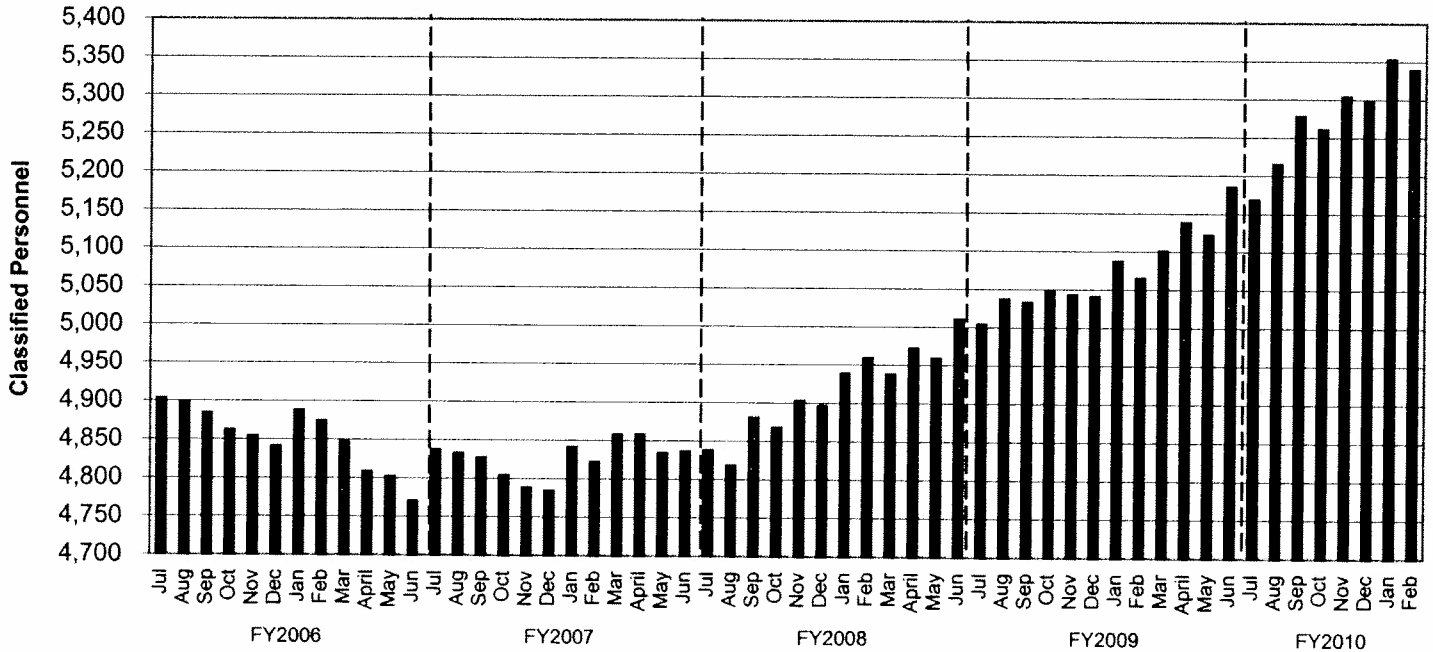


TREND INDICATORS - HIRING AND RETIREMENTS

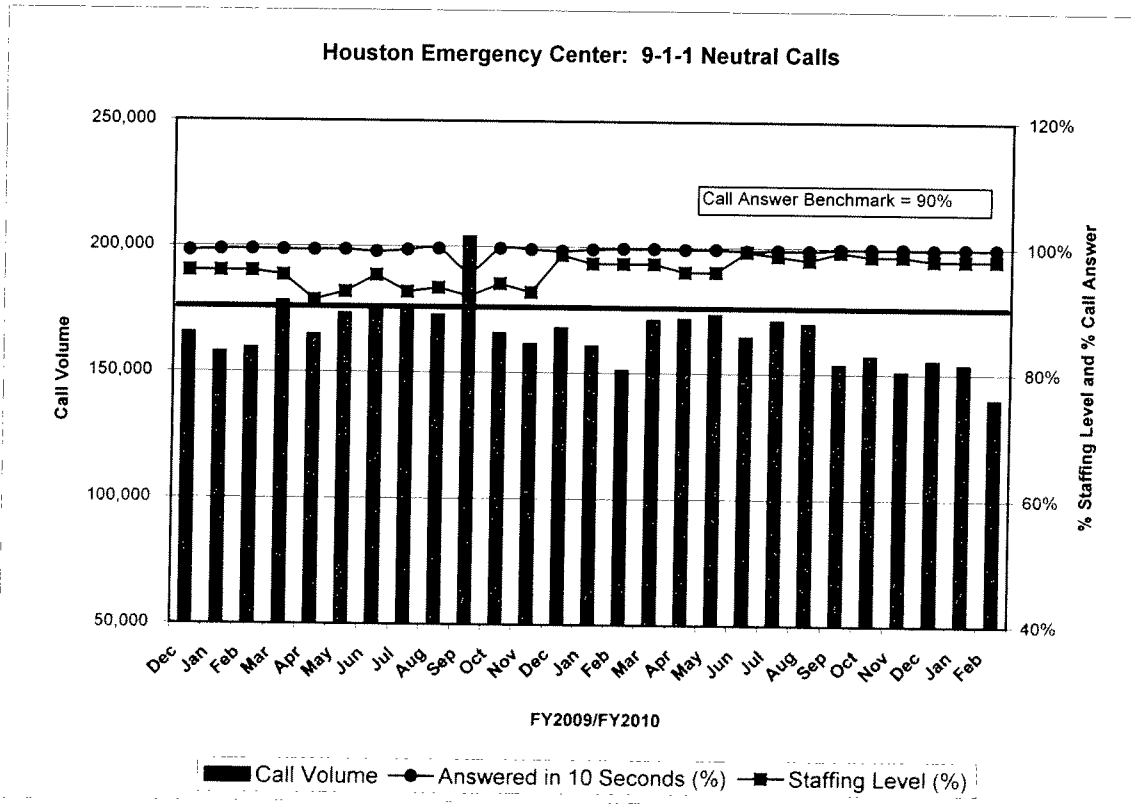
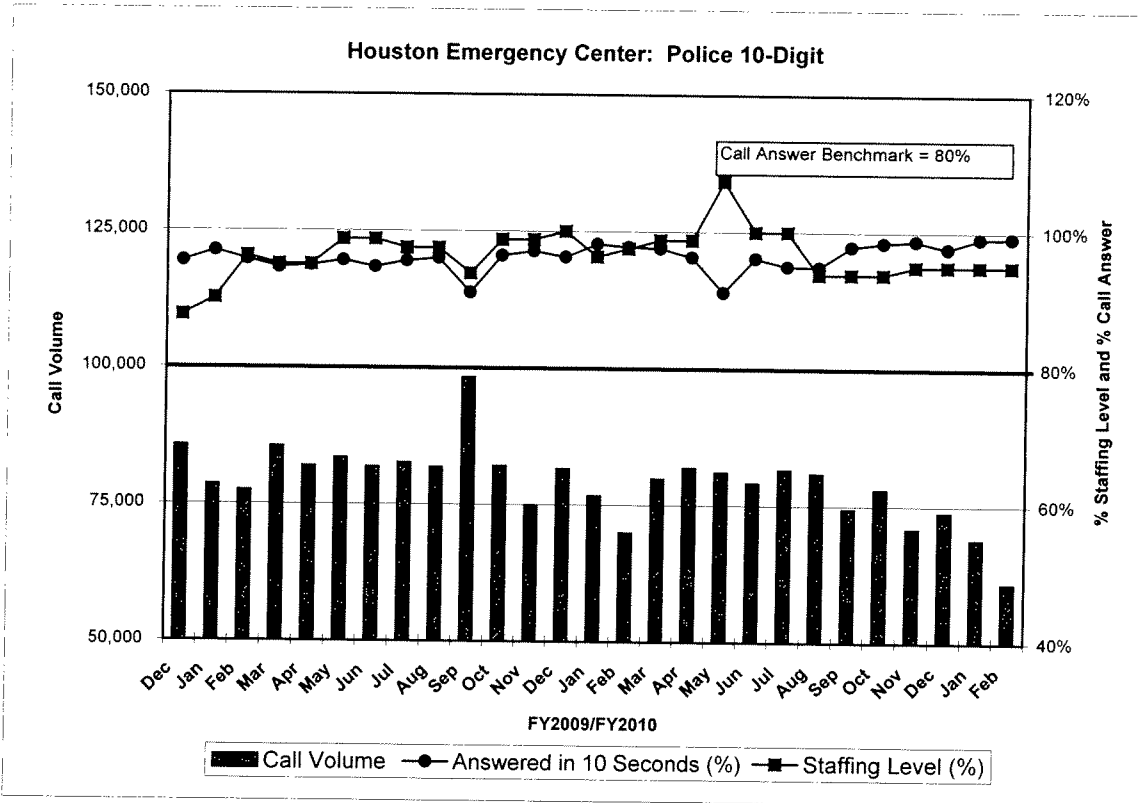
**Houston Police Department
FY2010 Classified Attrition**



**Houston Police Department
Classified Staffing - FY2006 to FY2010**

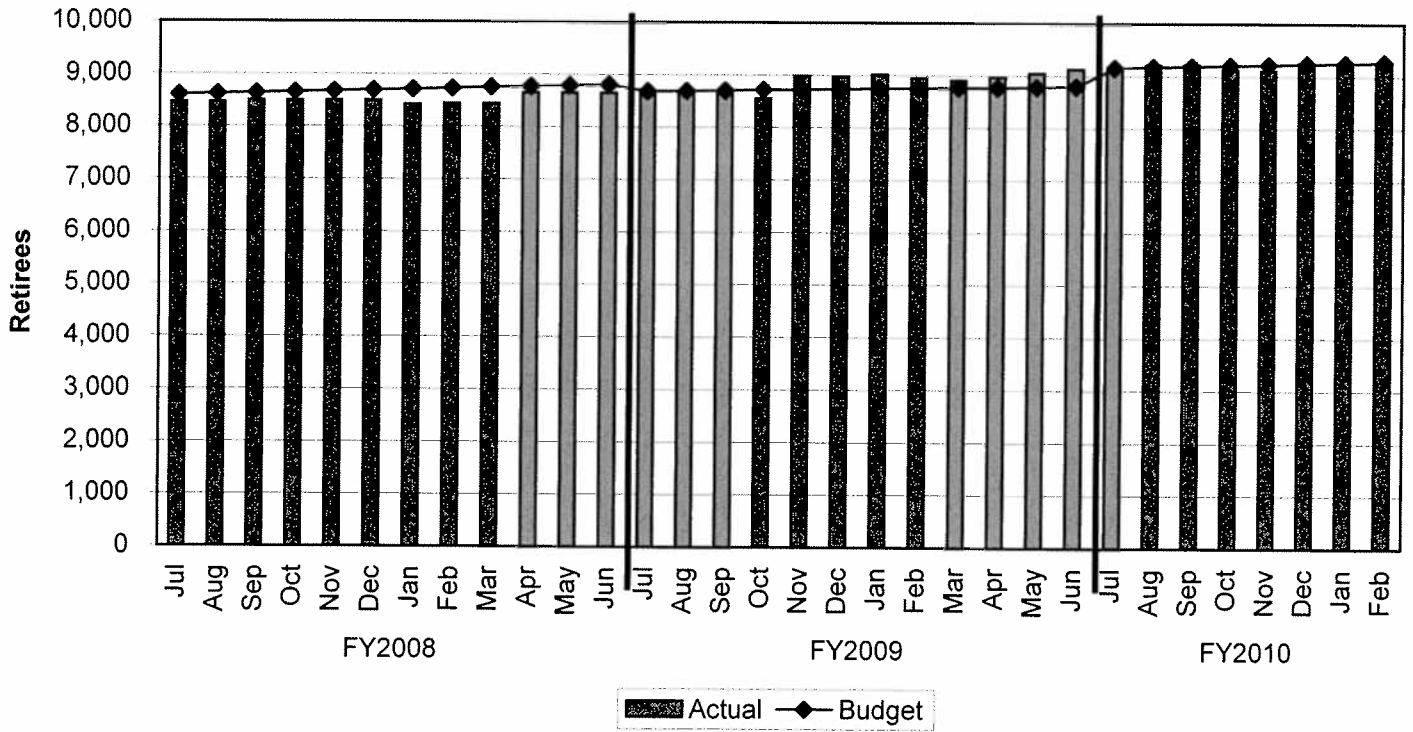


TREND INDICATORS - HOUSTON EMERGENCY CENTER



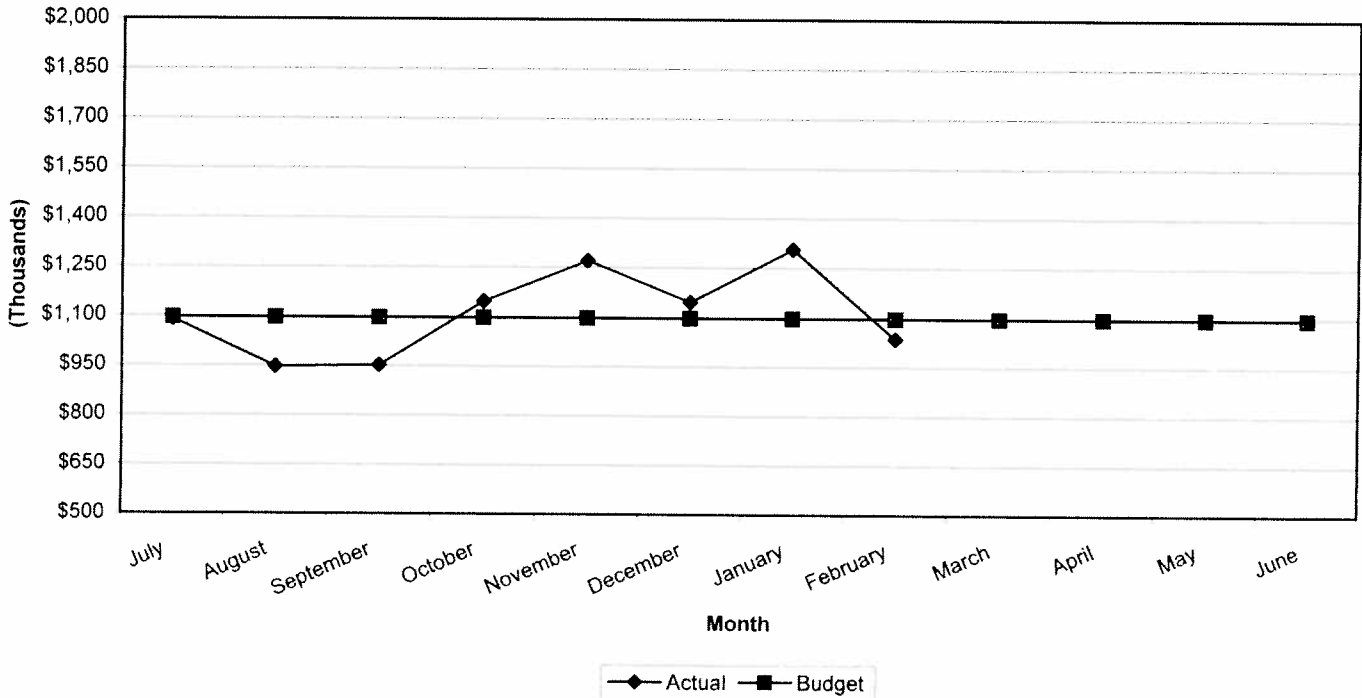
TREND INDICATORS - RETIREMENTS

Retirees Receiving Health Benefits

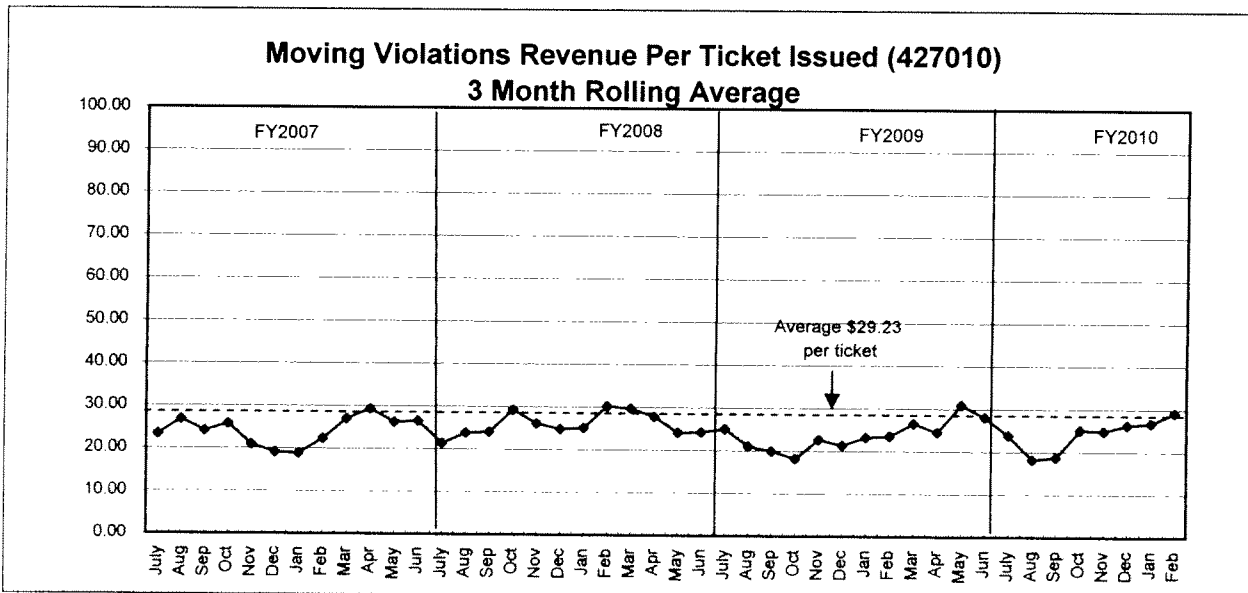
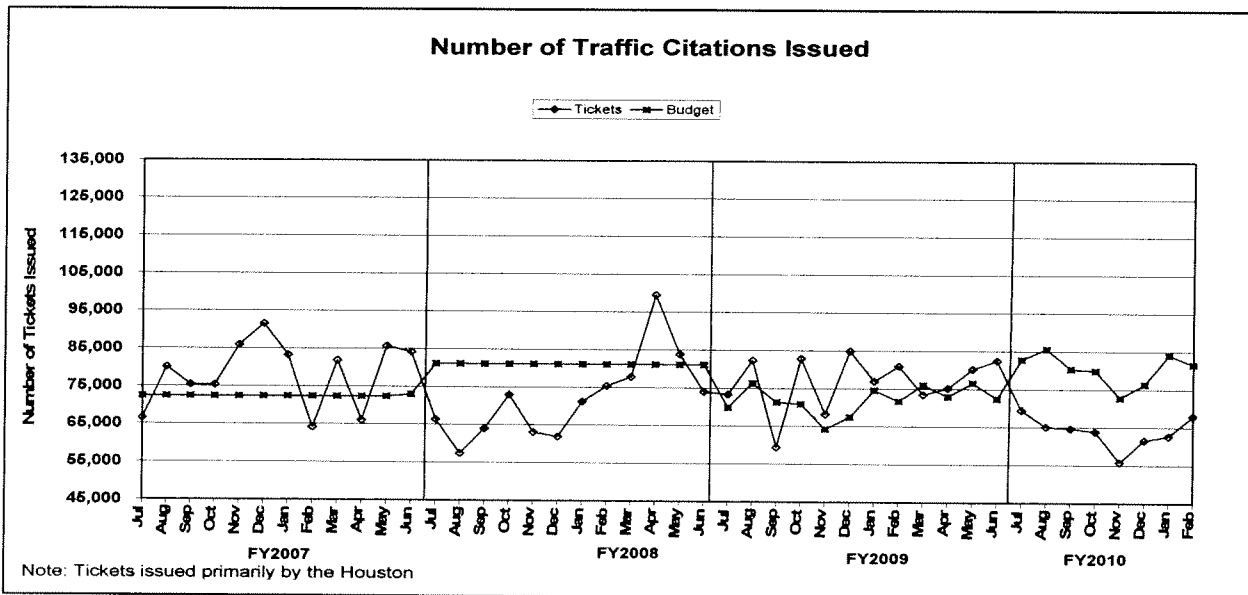
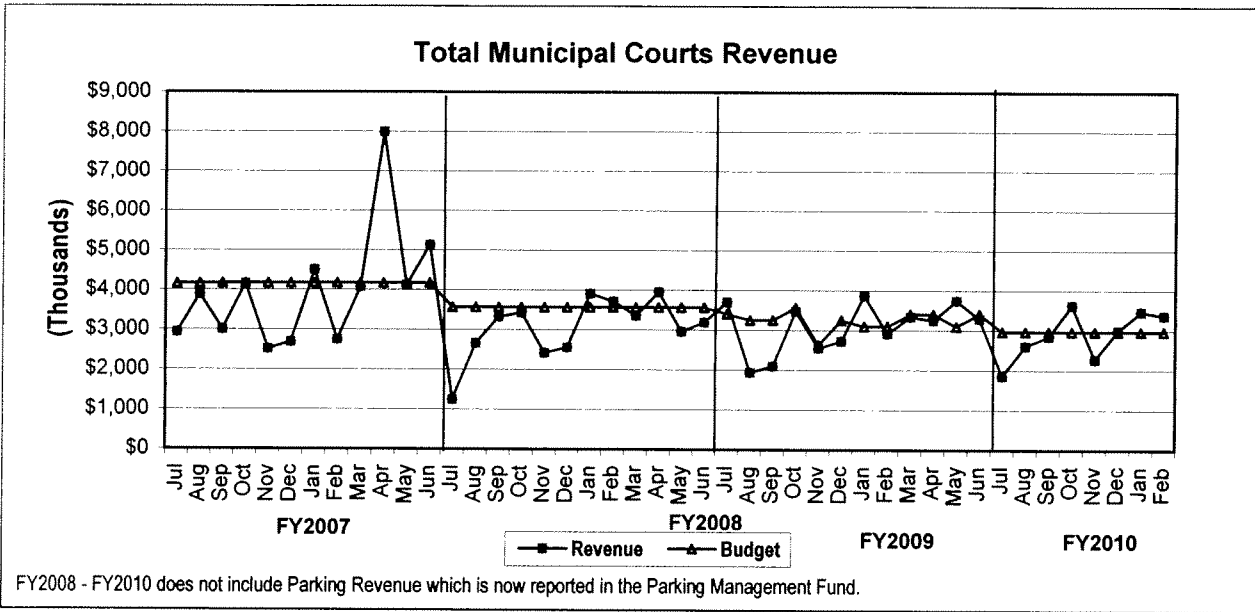


TREND INDICATORS - PARKING MANAGEMENT

Total Parking Management Revenue

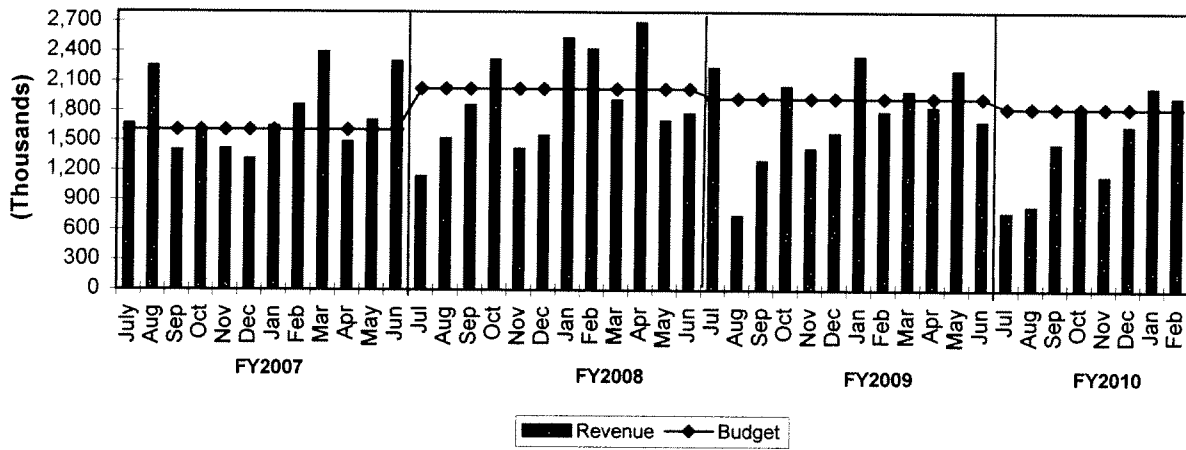


TREND INDICATORS - MUNICIPAL COURTS

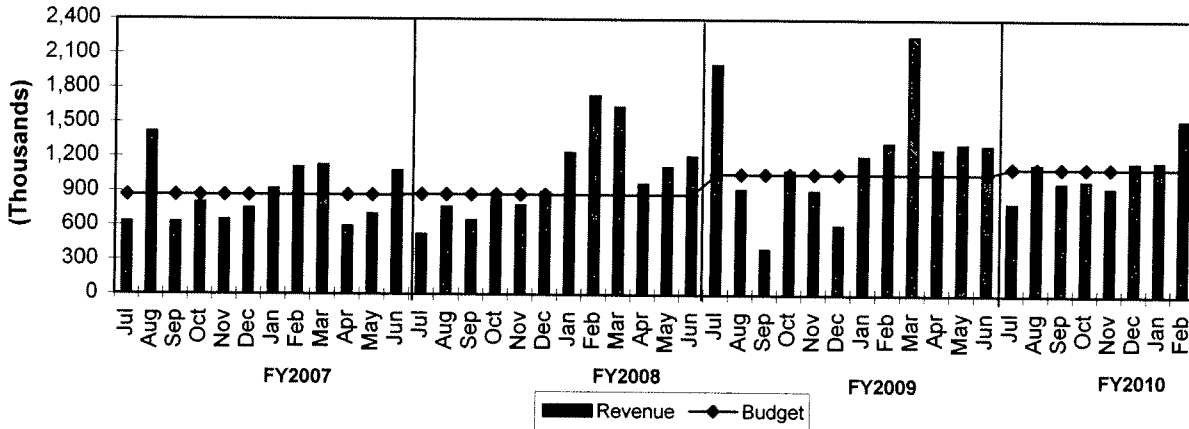


TREND INDICATORS - MUNICIPAL COURTS

Moving Violations Collections vs Budget

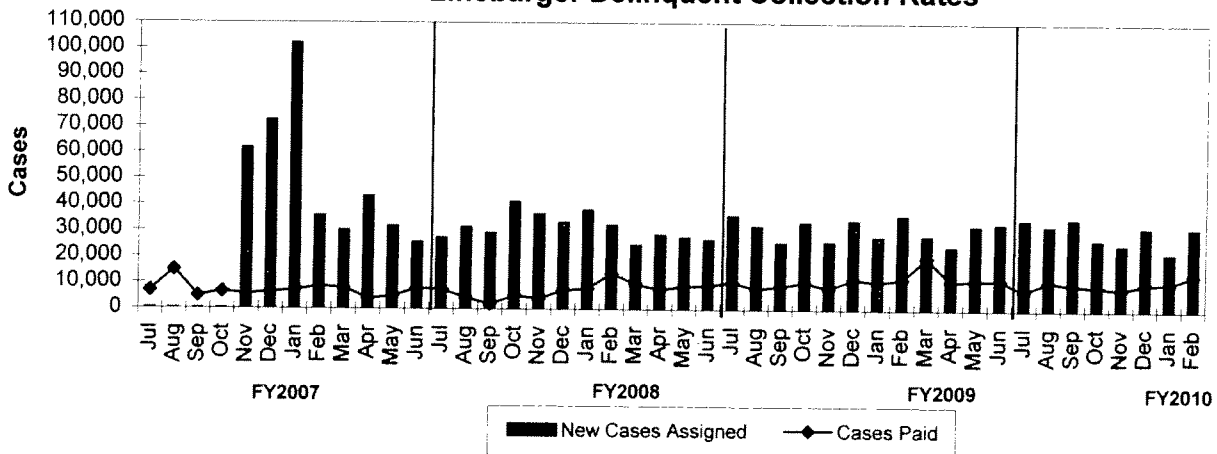


Total Delinquent Collections vs Budget*



*Net of fees and expenses paid to Linebarger

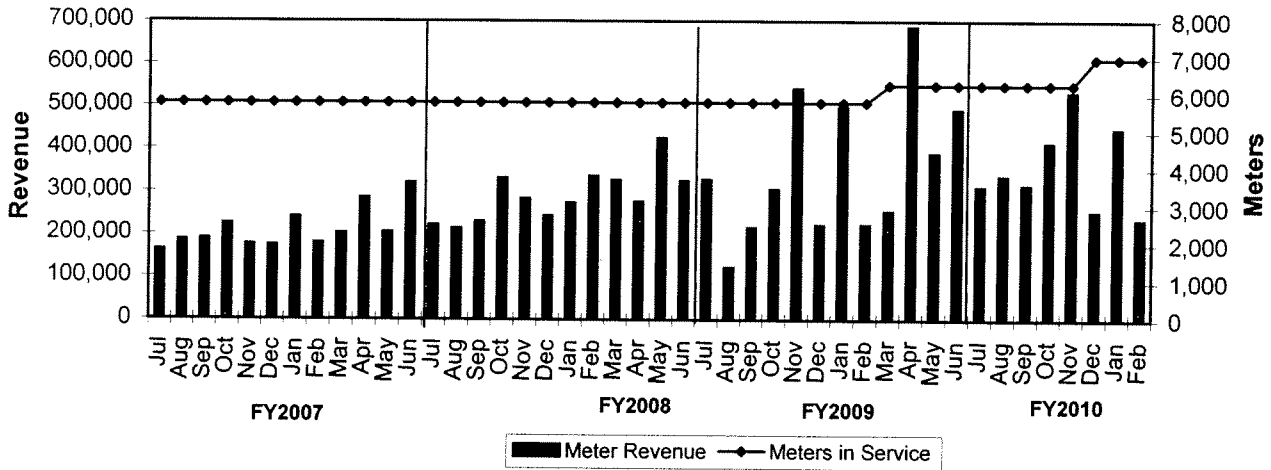
Traffic, Non-Traffic & Failure to Appear Linebarger Delinquent Collection Rates



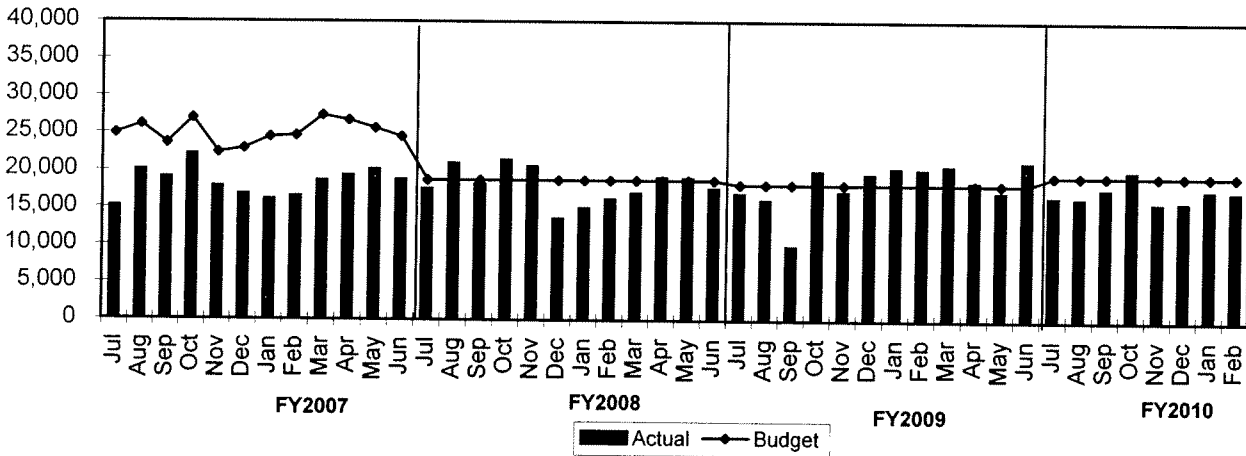
*Excludes Delinquent Parking Collections

TREND INDICATORS - MUNICIPAL COURTS

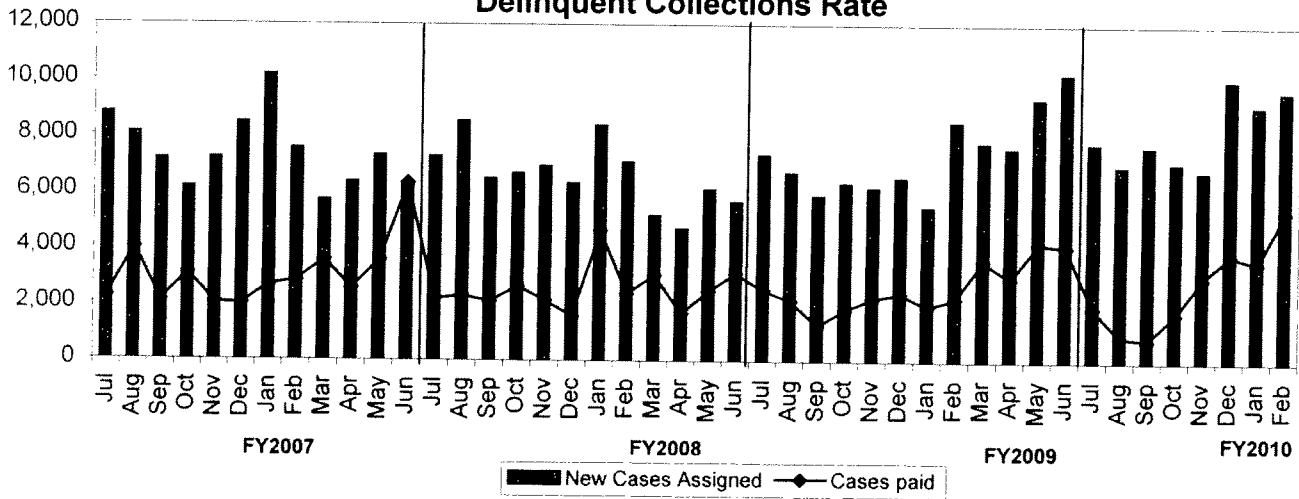
Meter Revenue vs # Meters in Service



Parking Violations vs Budget

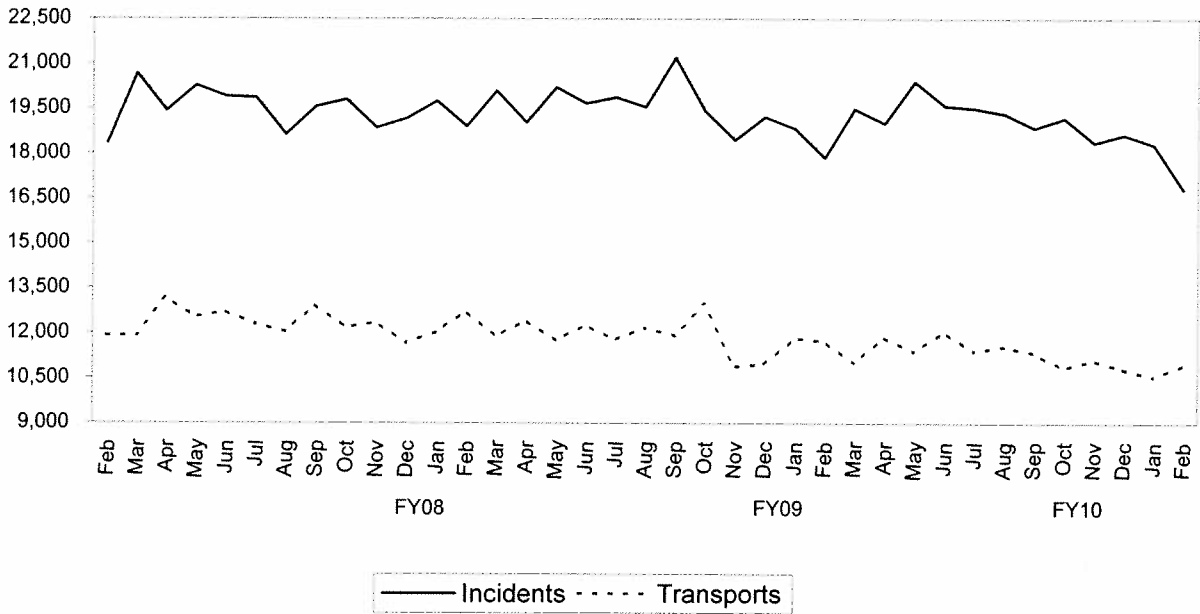


Parking Meter Violations Delinquent Collections Rate

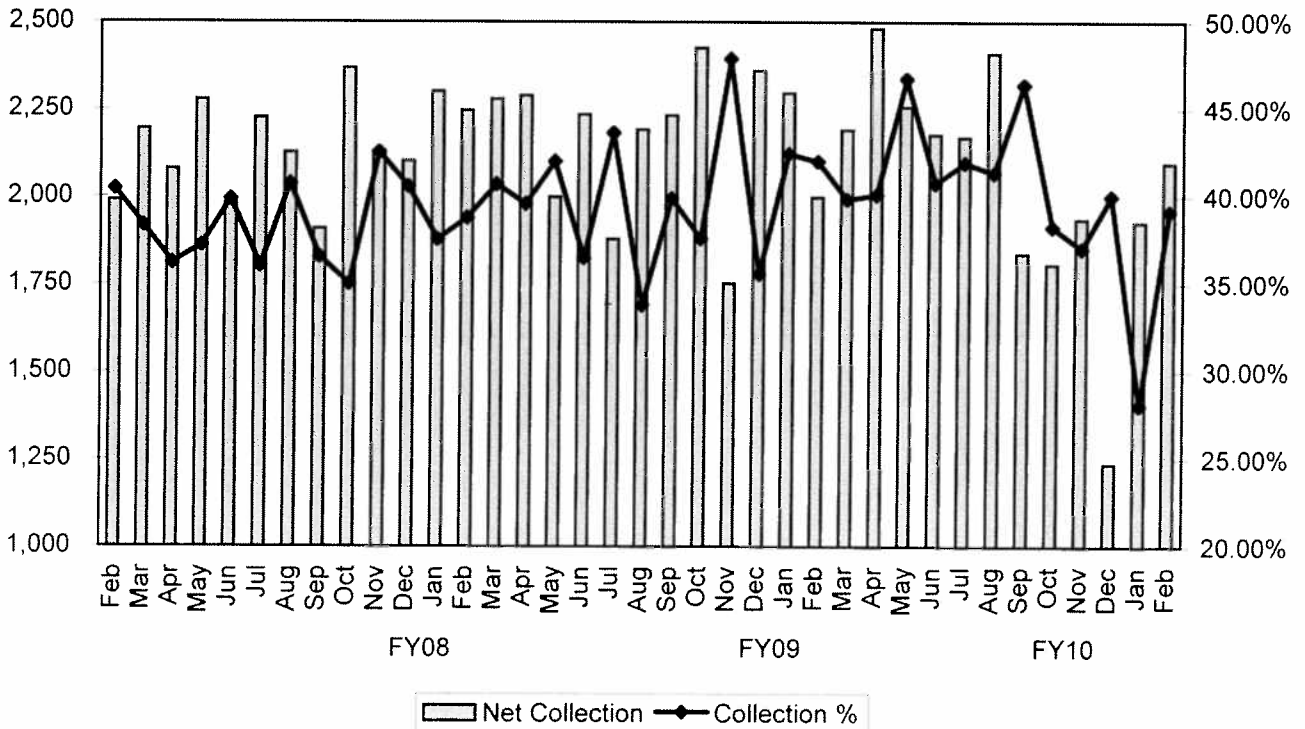


TREND INDICATORS - AMBULANCE SERVICES

EMS Incidents and Transports

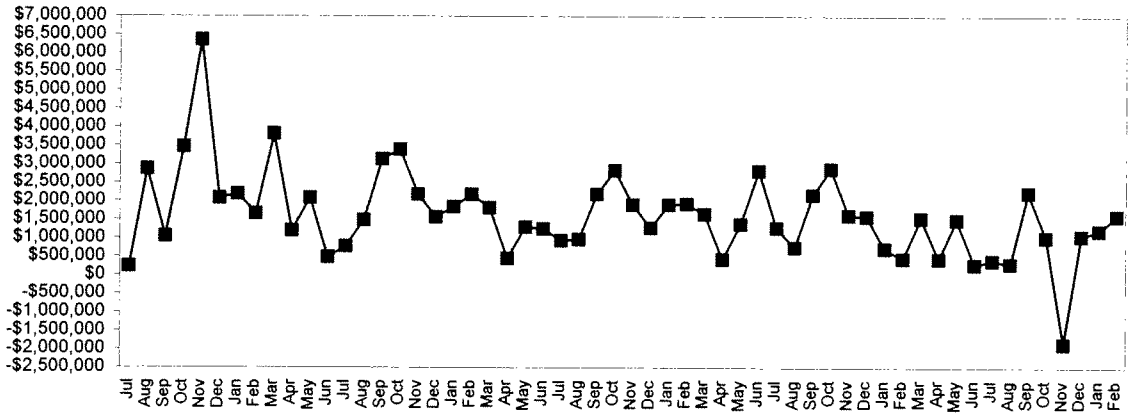


EMS Net Collections & Collection Percentage



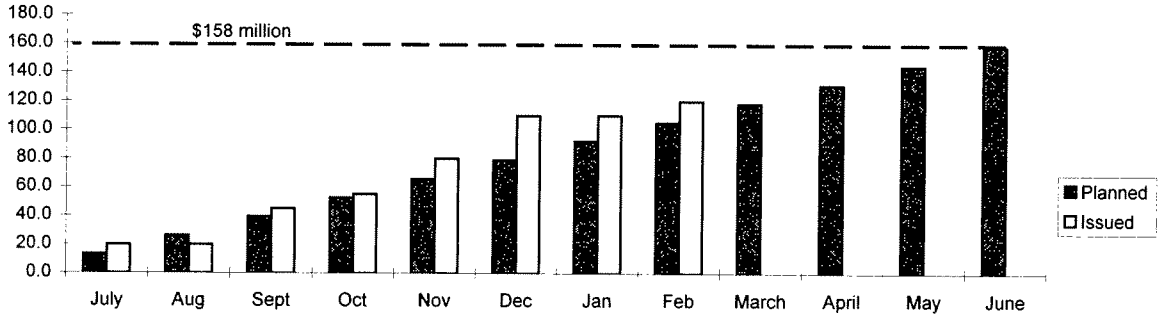
TREND INDICATORS - MISCELLANEOUS

Delinquent Property Tax

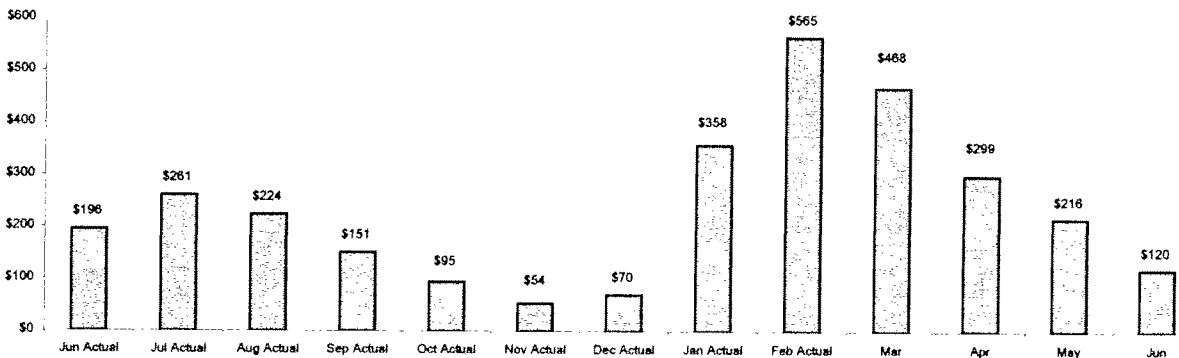


Negative balance for November 2009 was a net result of more taxes refunded to taxpayers on settlements of value litigations than taxes collected.

FY2010 Public Improvement Bonds Commercial Paper Planned vs Issued (\$Millions)

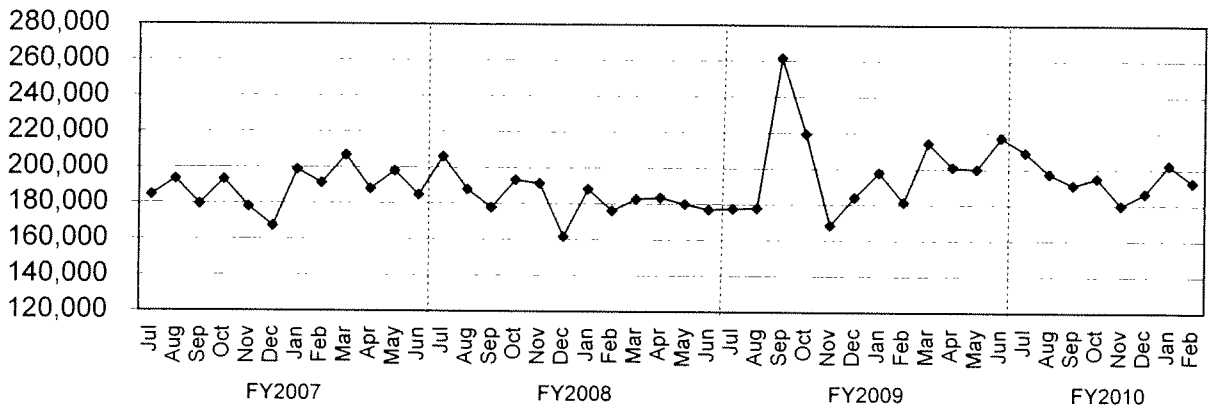


FY2010 Projected City of Houston General Fund Ending Cash Balances (In Millions \$)



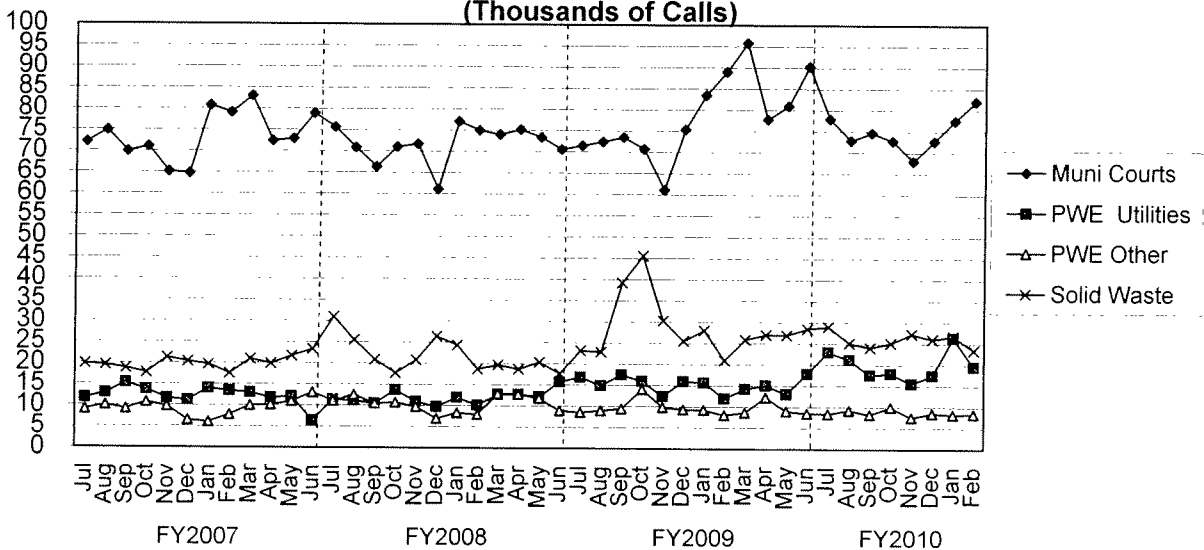
TREND INDICATORS - MISCELLANEOUS

3-1-1 Call Volume



3-1-1 became fully operational in August 2001

**Operator Assisted 3-1-1 Call Distribution
(Thousands of Calls)**



4 largest users of operator assisted 3-1-1 calls.