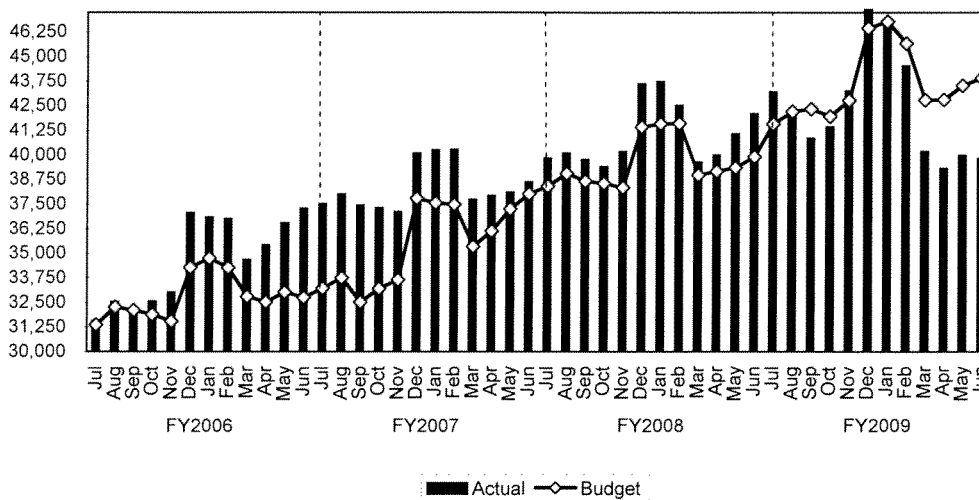


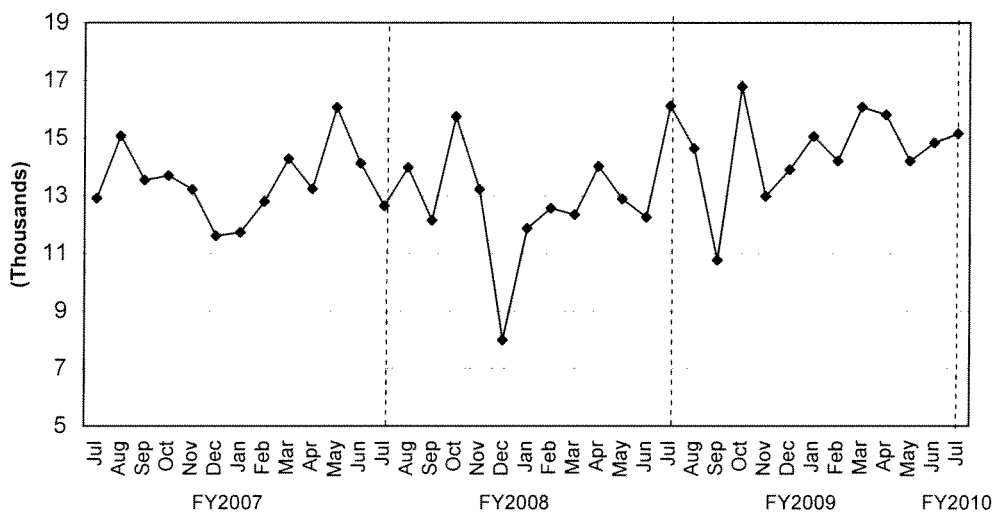
TREND INDICATORS - LOCAL ECONOMY

Sales Tax - Three-Month Rolling Average



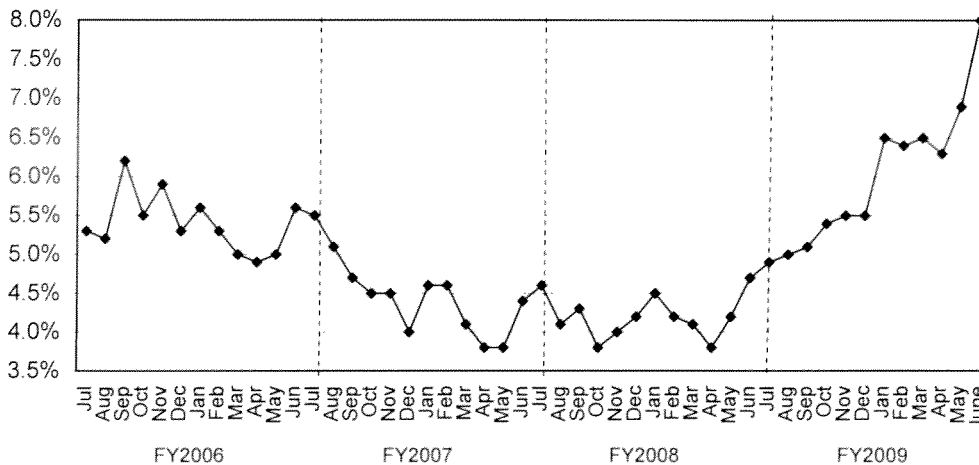
Source: Office of State Comptroller

Building Permits Issued



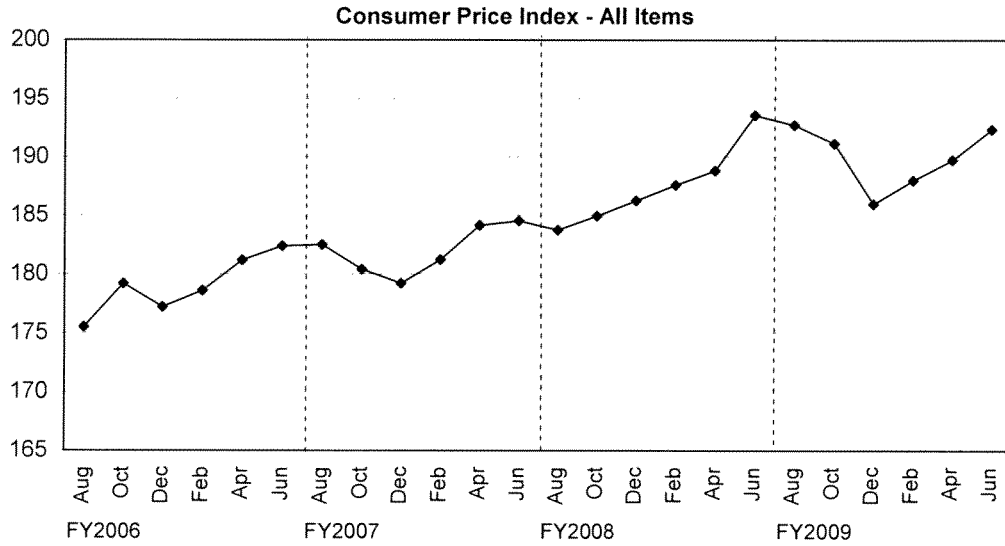
Source: City of Houston Planning and Development Department

Unemployment Rate

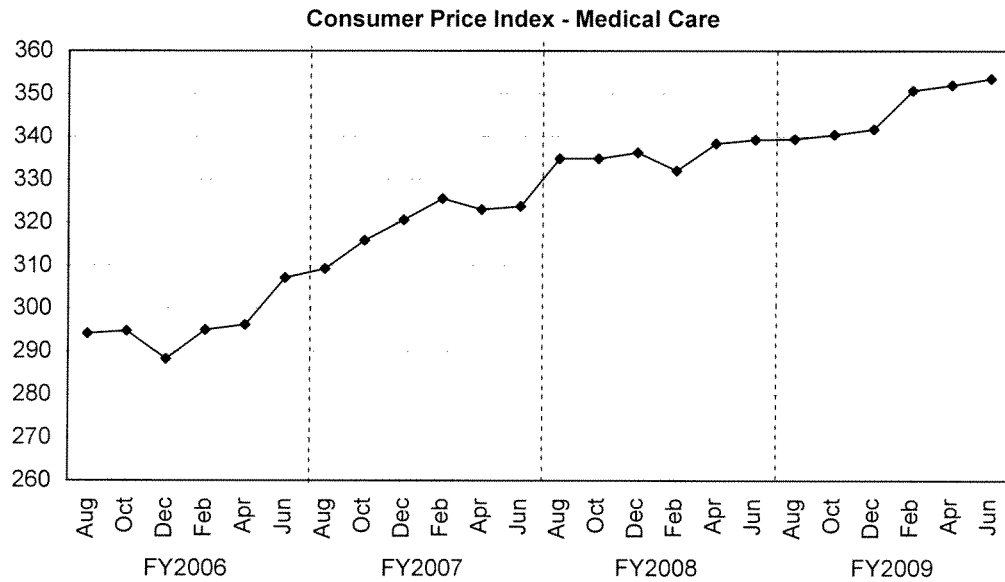


Source: Databook Houston; University of Houston Center for Public Policy; not seasonally adjusted

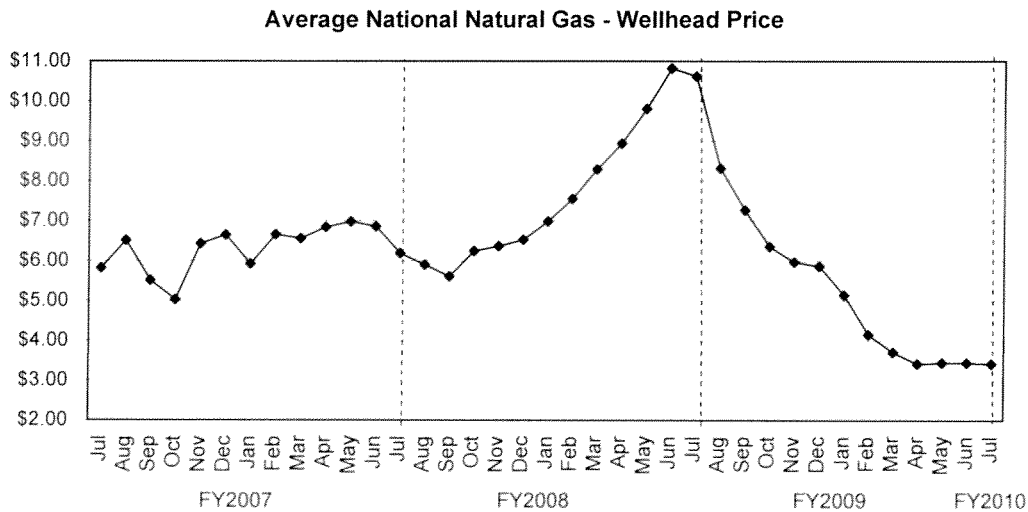
TREND INDICATORS - LOCAL ECONOMY



Source: Bureau of Labor Statistics - Houston, Galveston, Brazoria TX

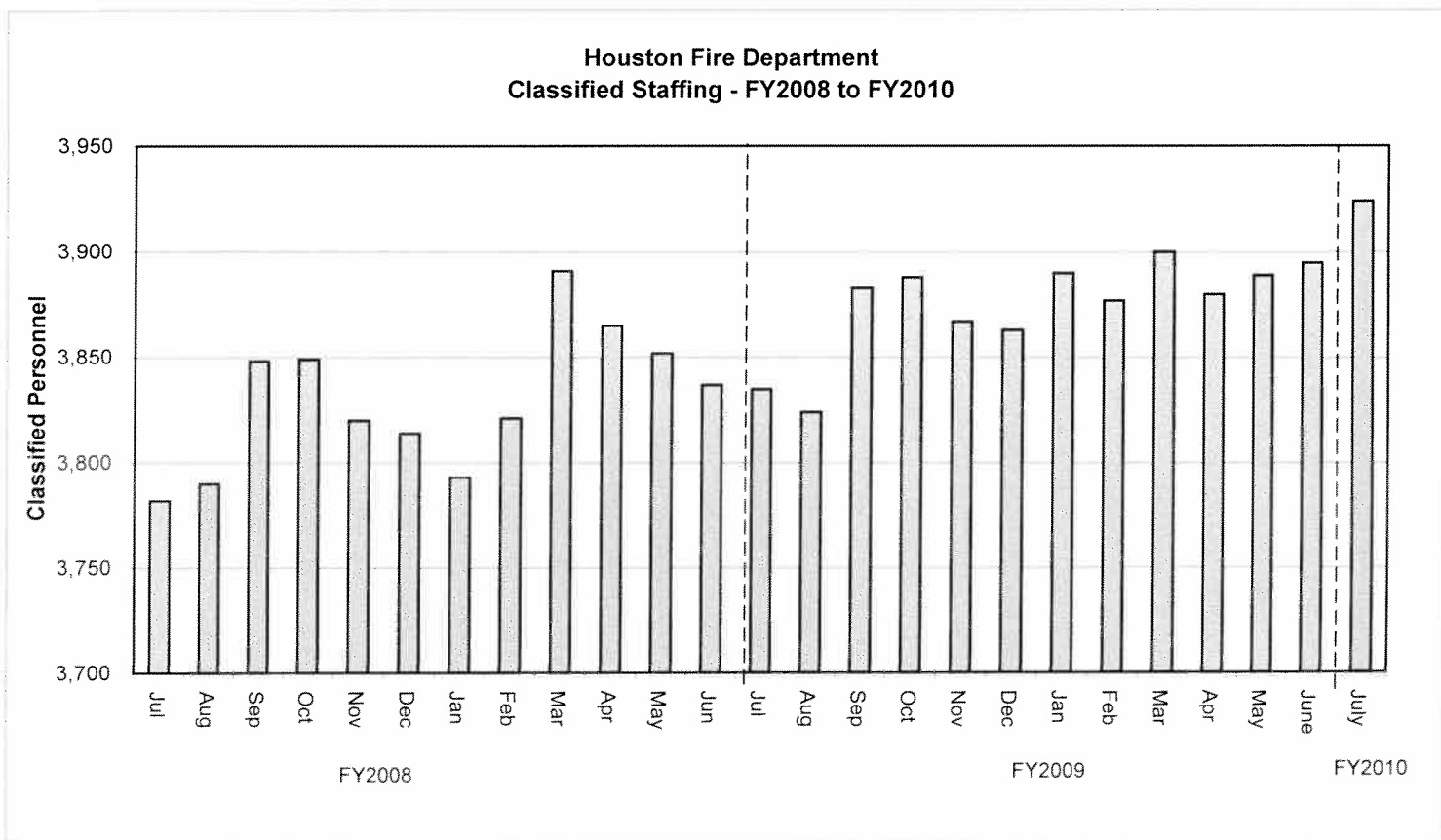
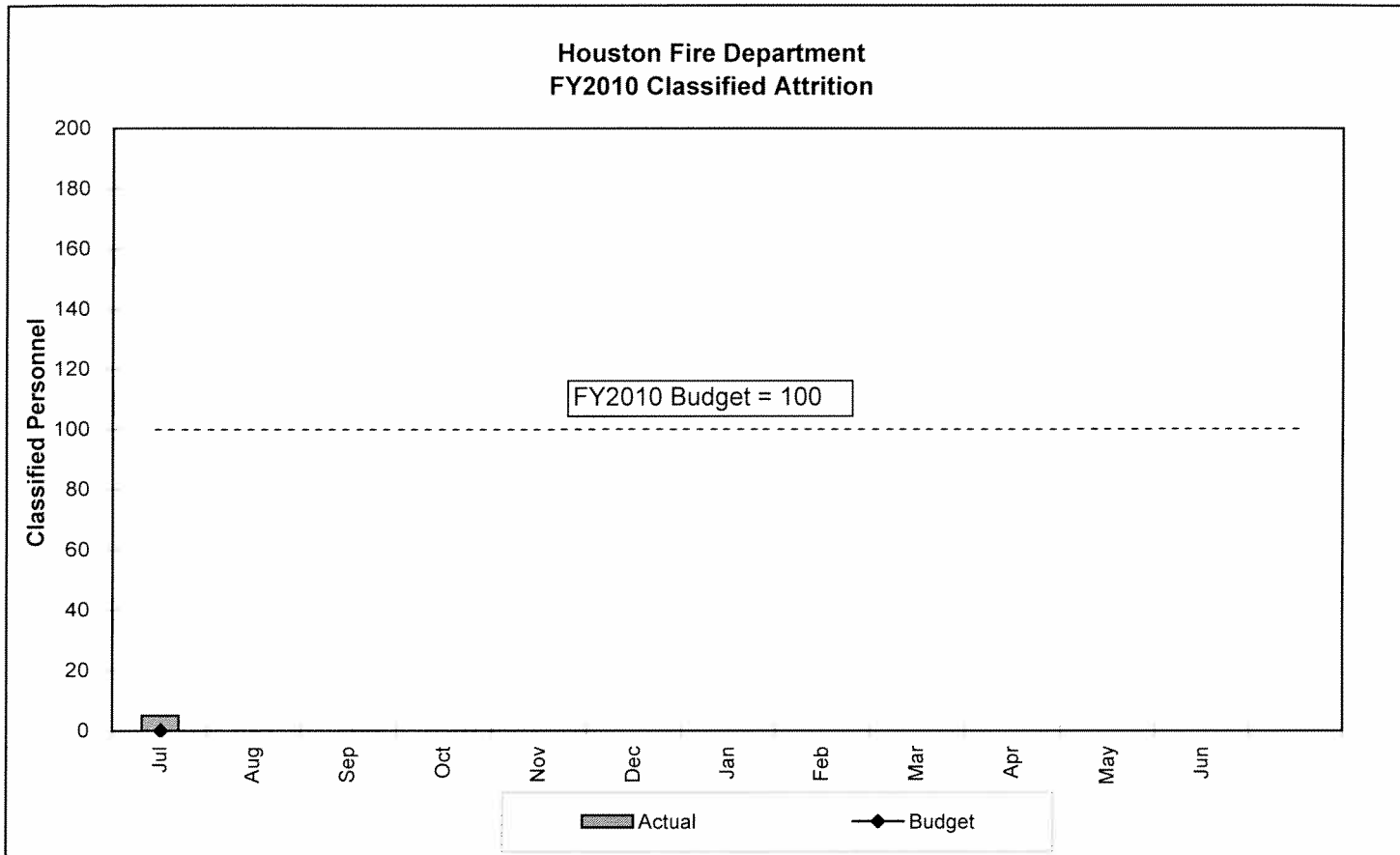


Source: Bureau of Labor Statistics - Houston, Galveston, Brazoria TX



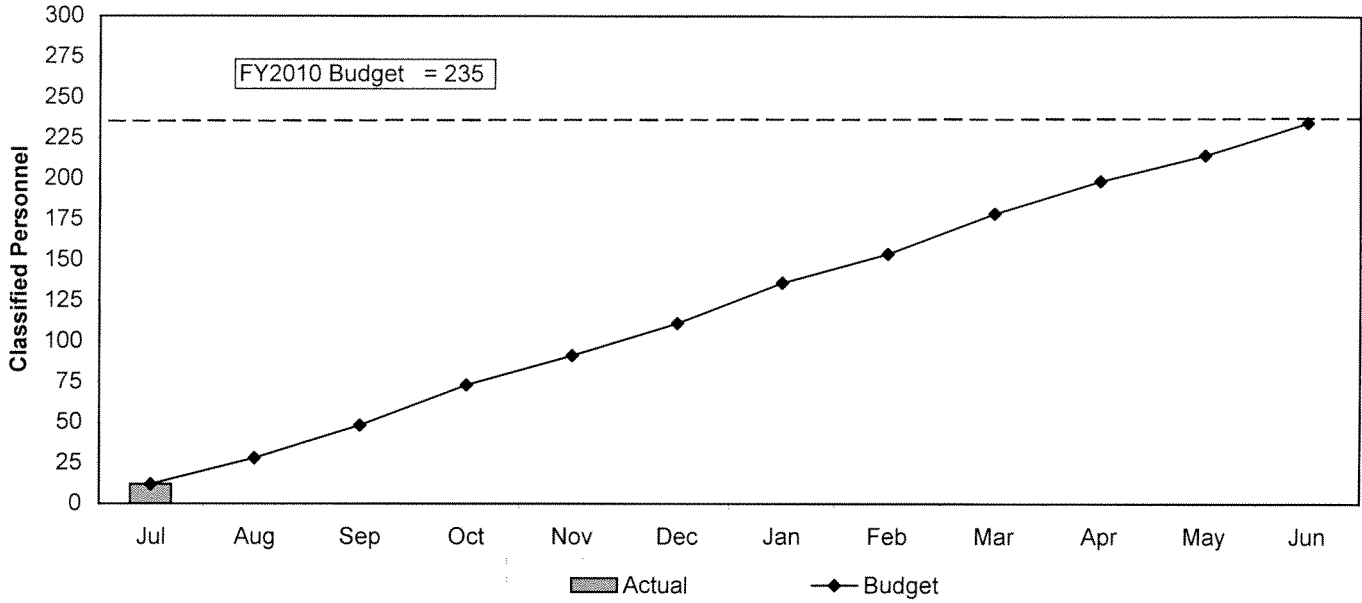
Source: Energy Information Administration/Natural Gas Monthly

TREND INDICATORS - RETIREMENTS

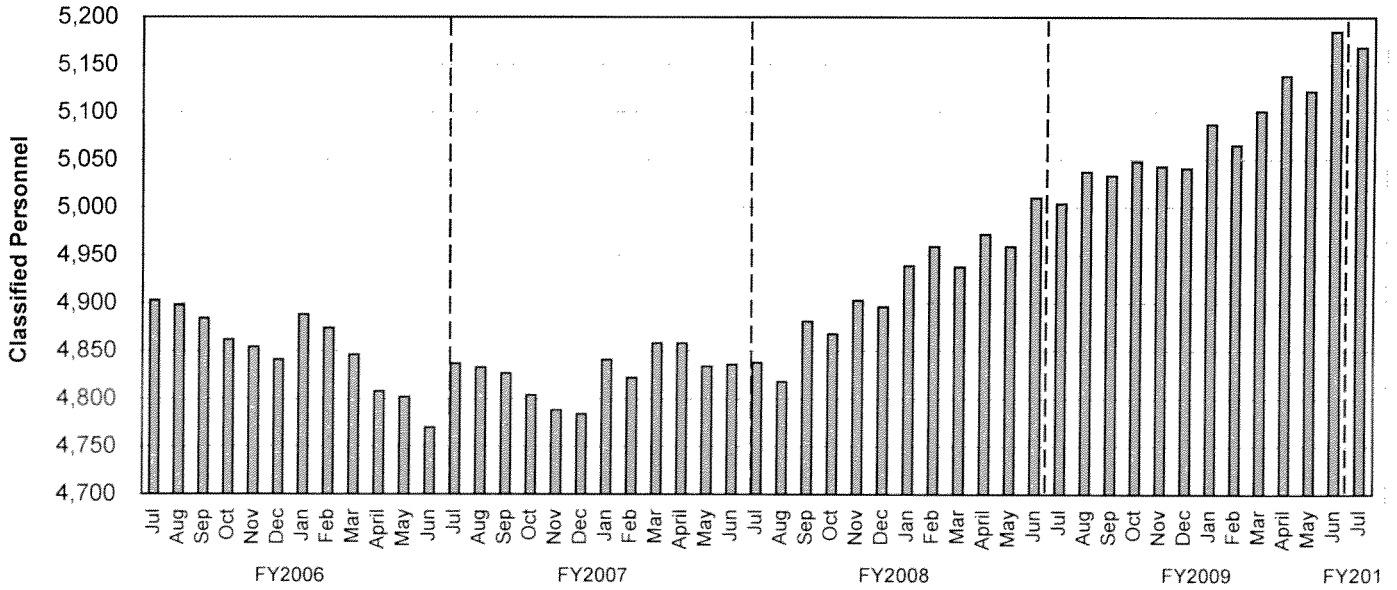


TREND INDICATORS - HIRING AND RETIREMENTS

Houston Police Department FY2010 Classified Attrition

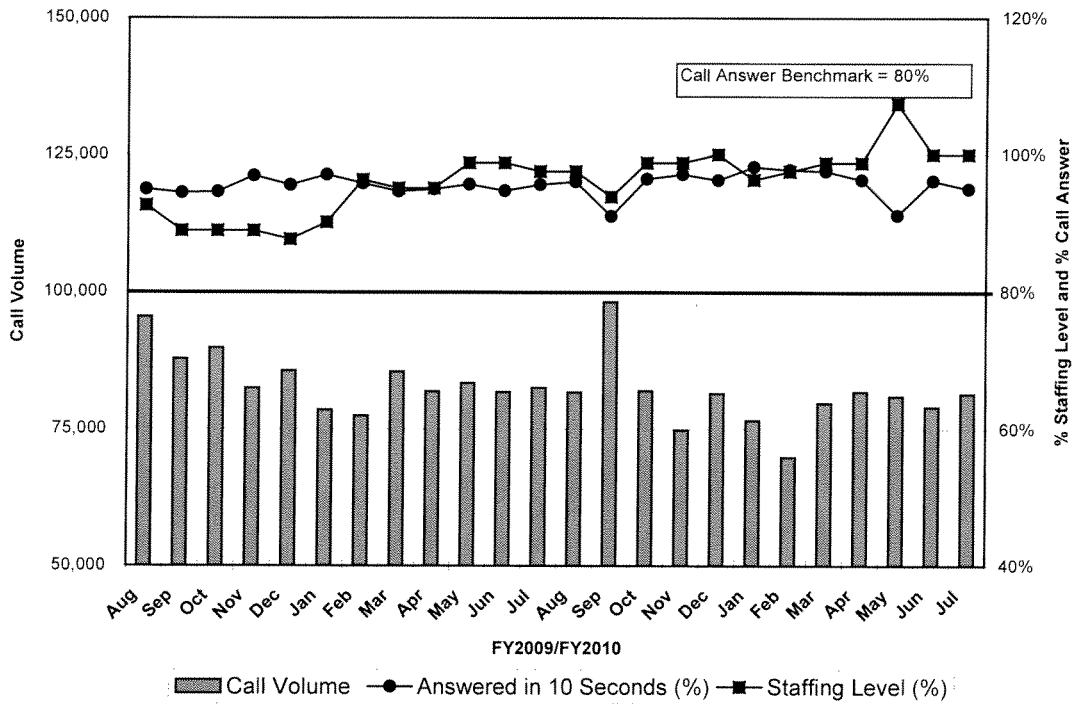


Houston Police Department Classified Staffing - FY2006 to FY2010

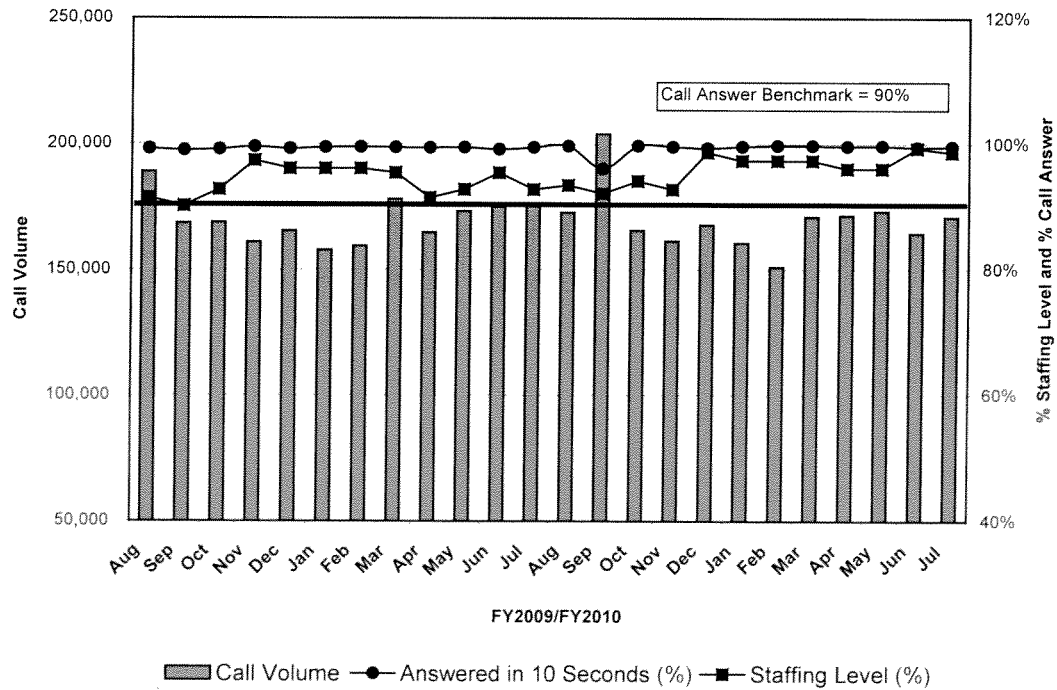


TREND INDICATORS - HOUSTON EMERGENCY CENTER

Houston Emergency Center: Police 10-Digit

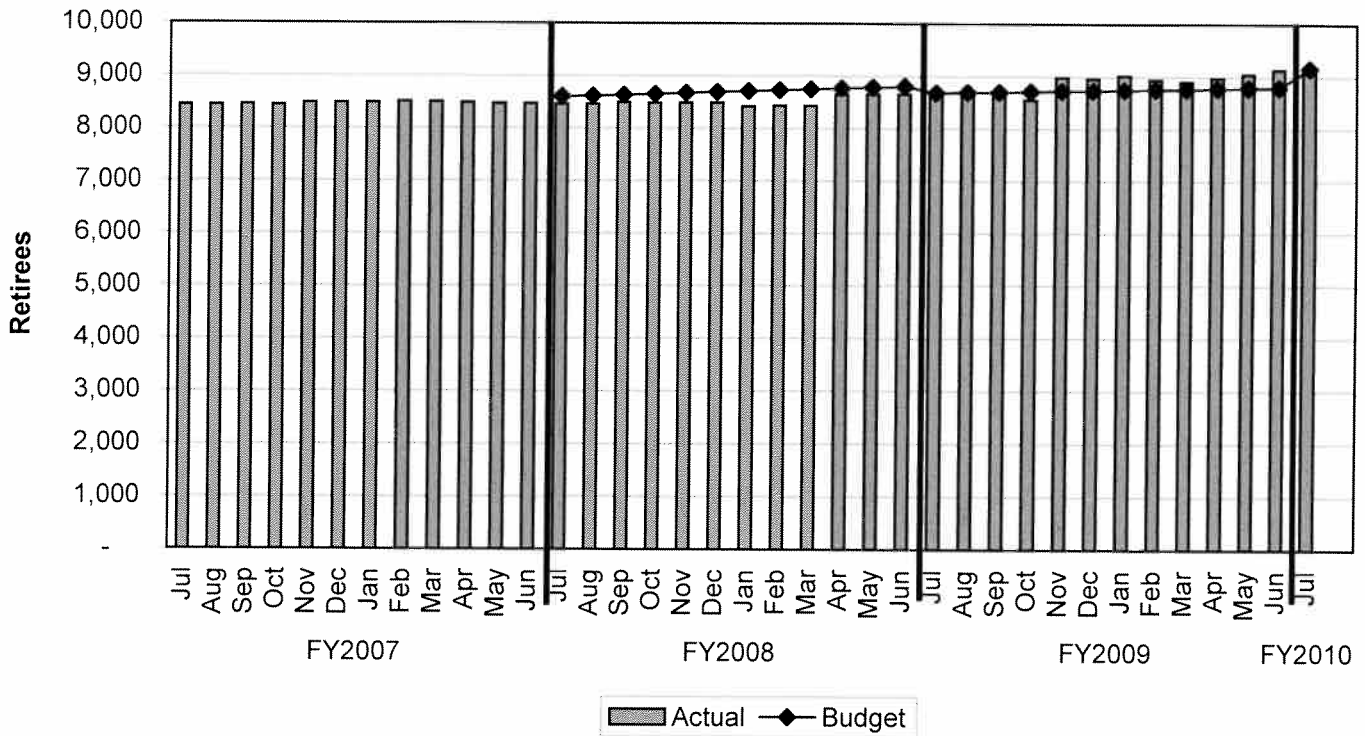


Houston Emergency Center: 9-1-1 Neutral Calls



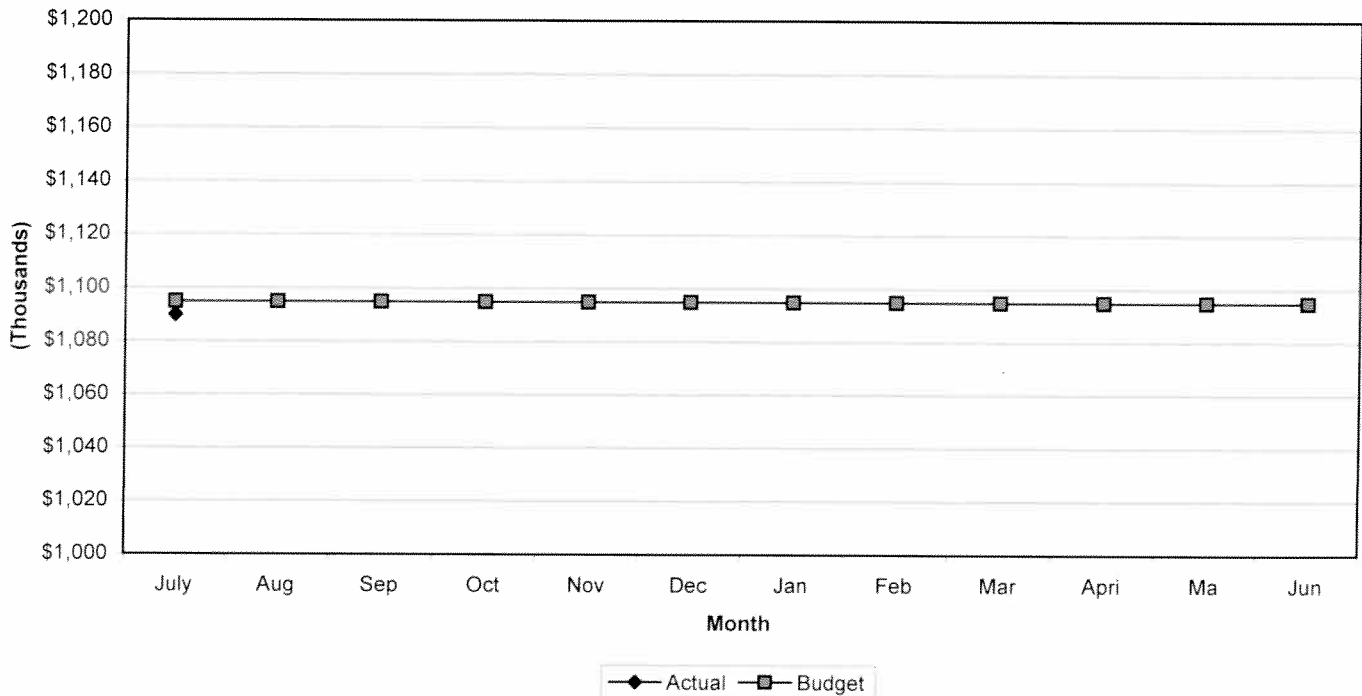
TREND INDICATORS - RETIREMENTS

Retirees Receiving Health Benefits

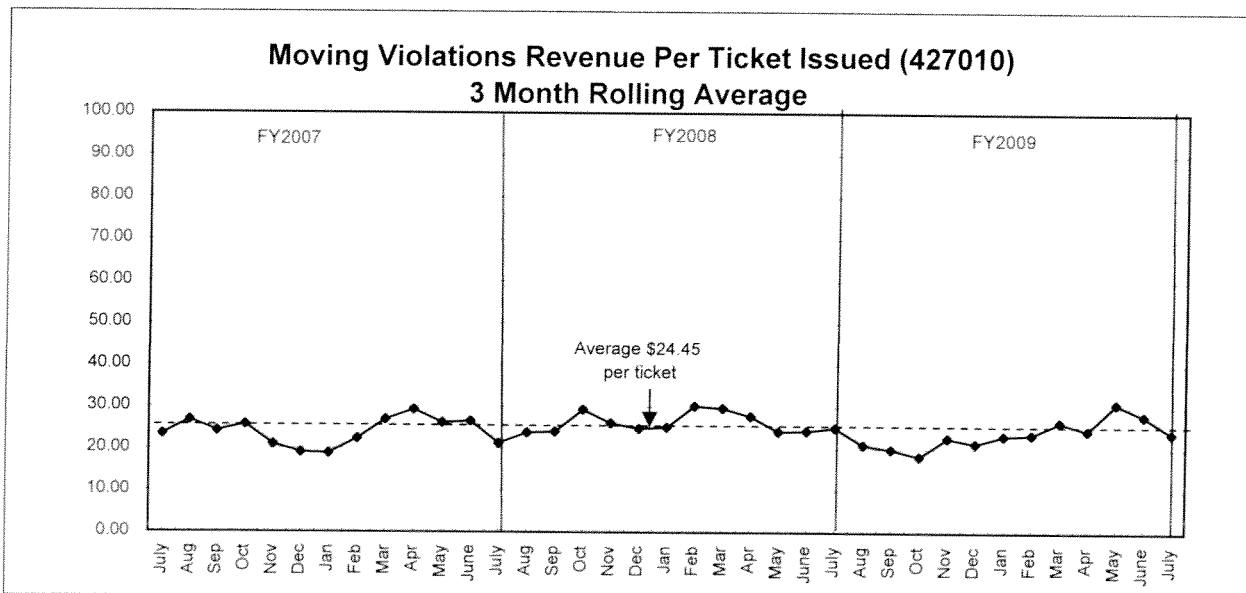
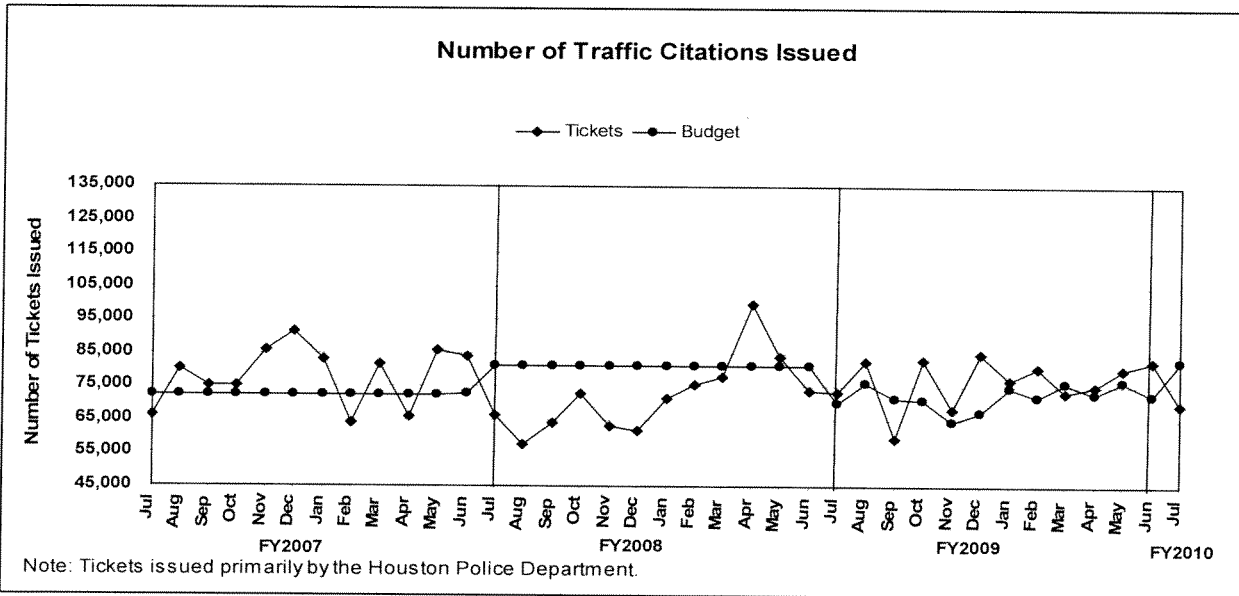
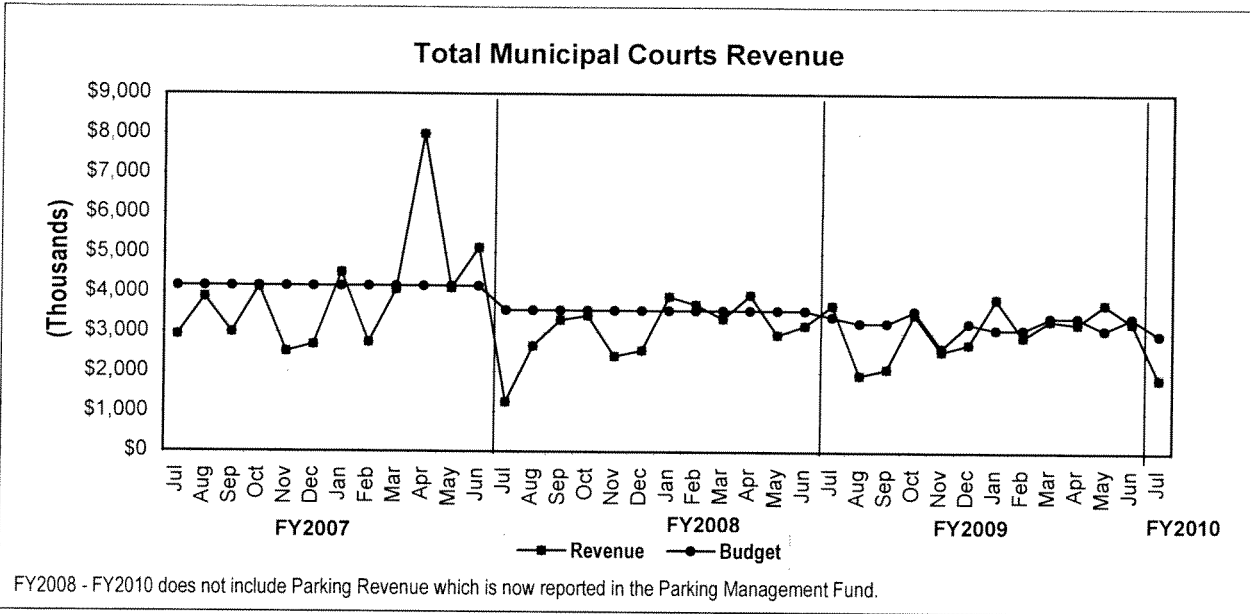


TREND INDICATORS - PARKING MANAGEMENT

Total Parking Management Revenue

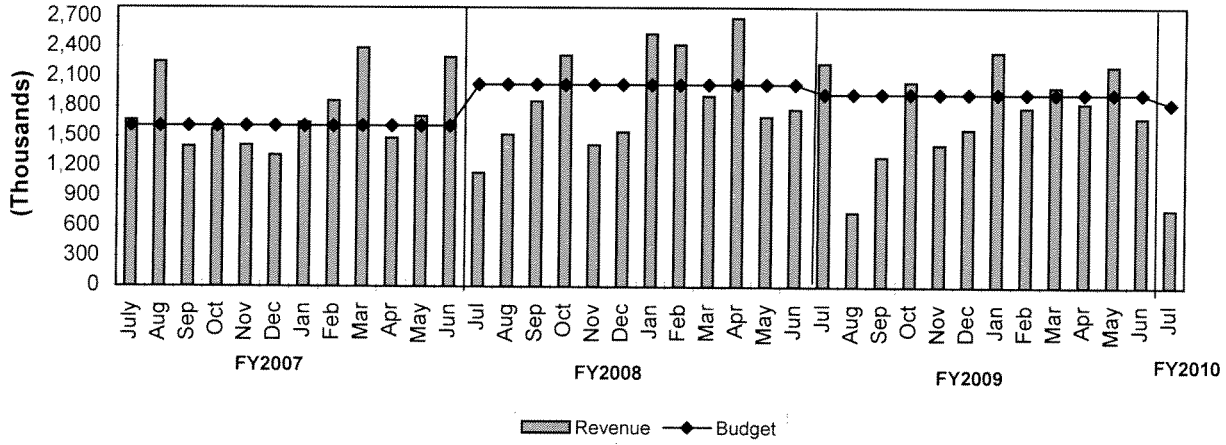


TREND INDICATORS - MUNICIPAL COURTS

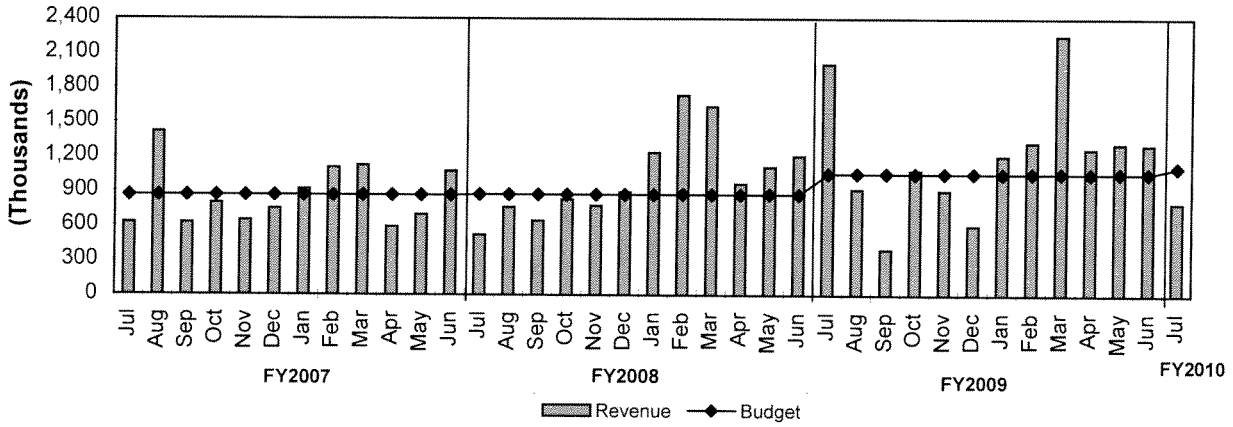


TREND INDICATORS - MUNICIPAL COURTS

Moving Violations Collections vs Budget

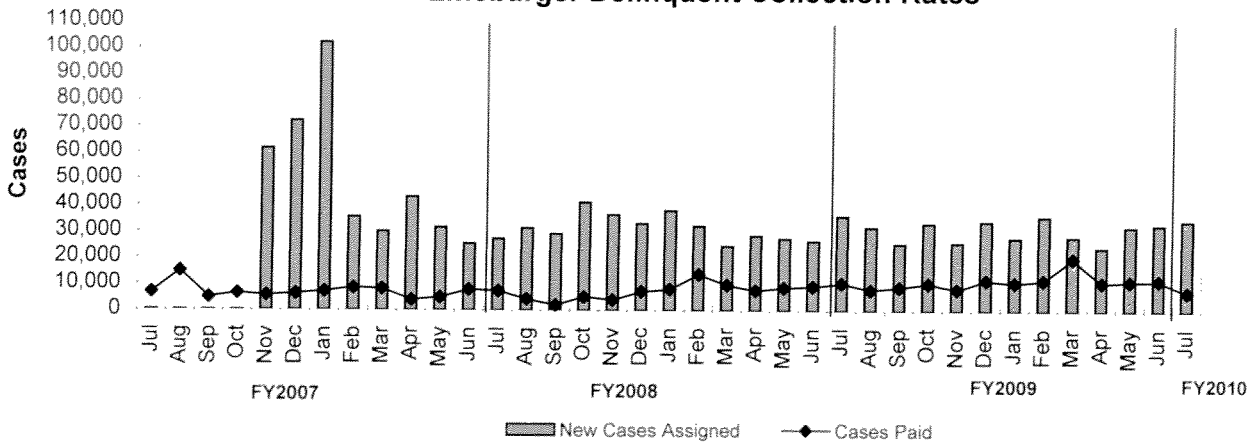


Total Delinquent Collections vs Budget*



*Net of fees and expenses paid to Linebarger

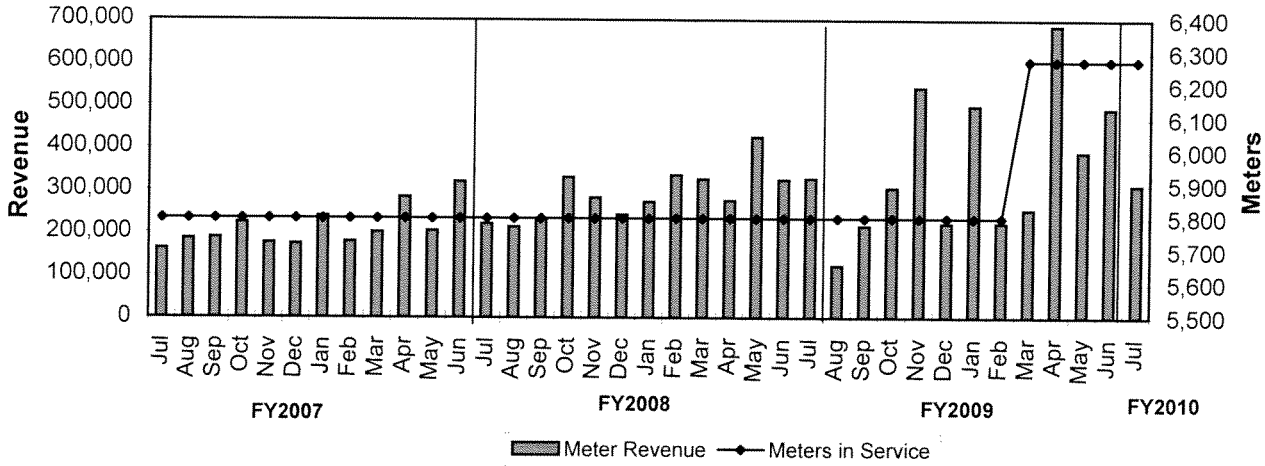
Traffic, Non-Traffic & Failure to Appear Linebarger Delinquent Collection Rates



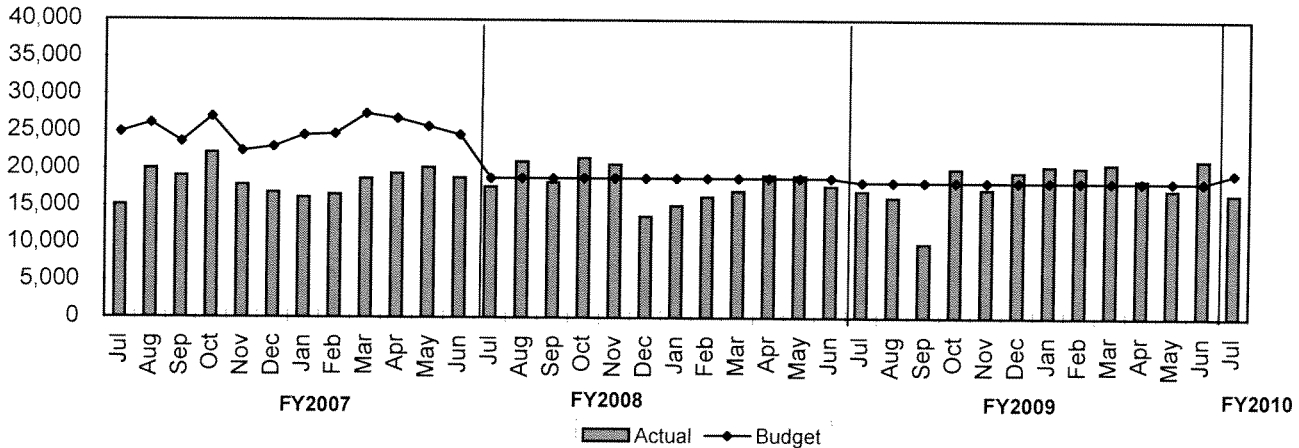
*Excludes Delinquent Parking Collections

TREND INDICATORS - MUNICIPAL COURTS

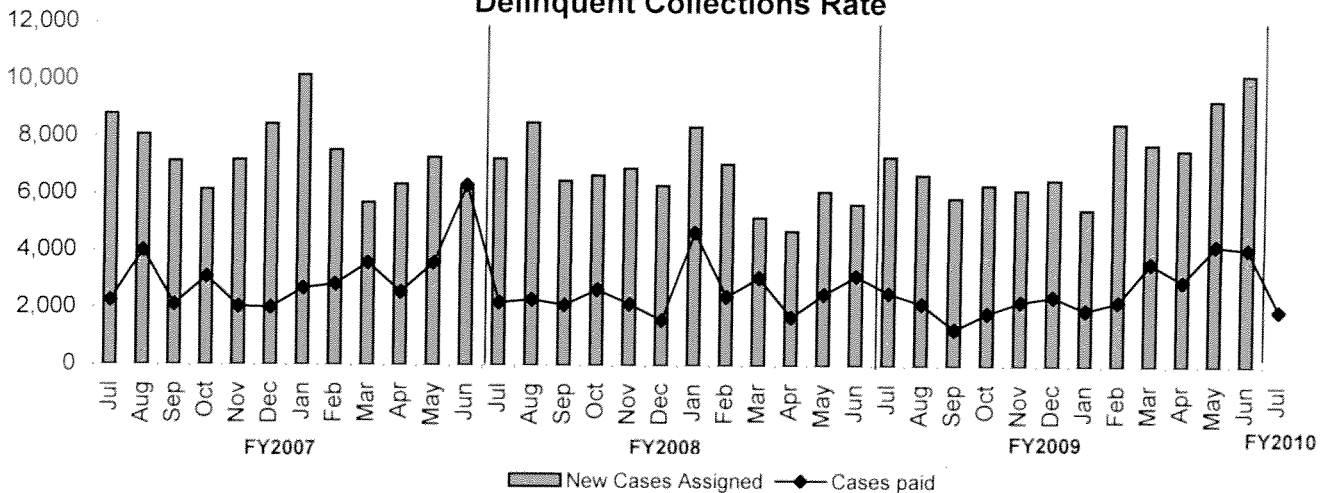
Meter Revenue vs # Meters in Service



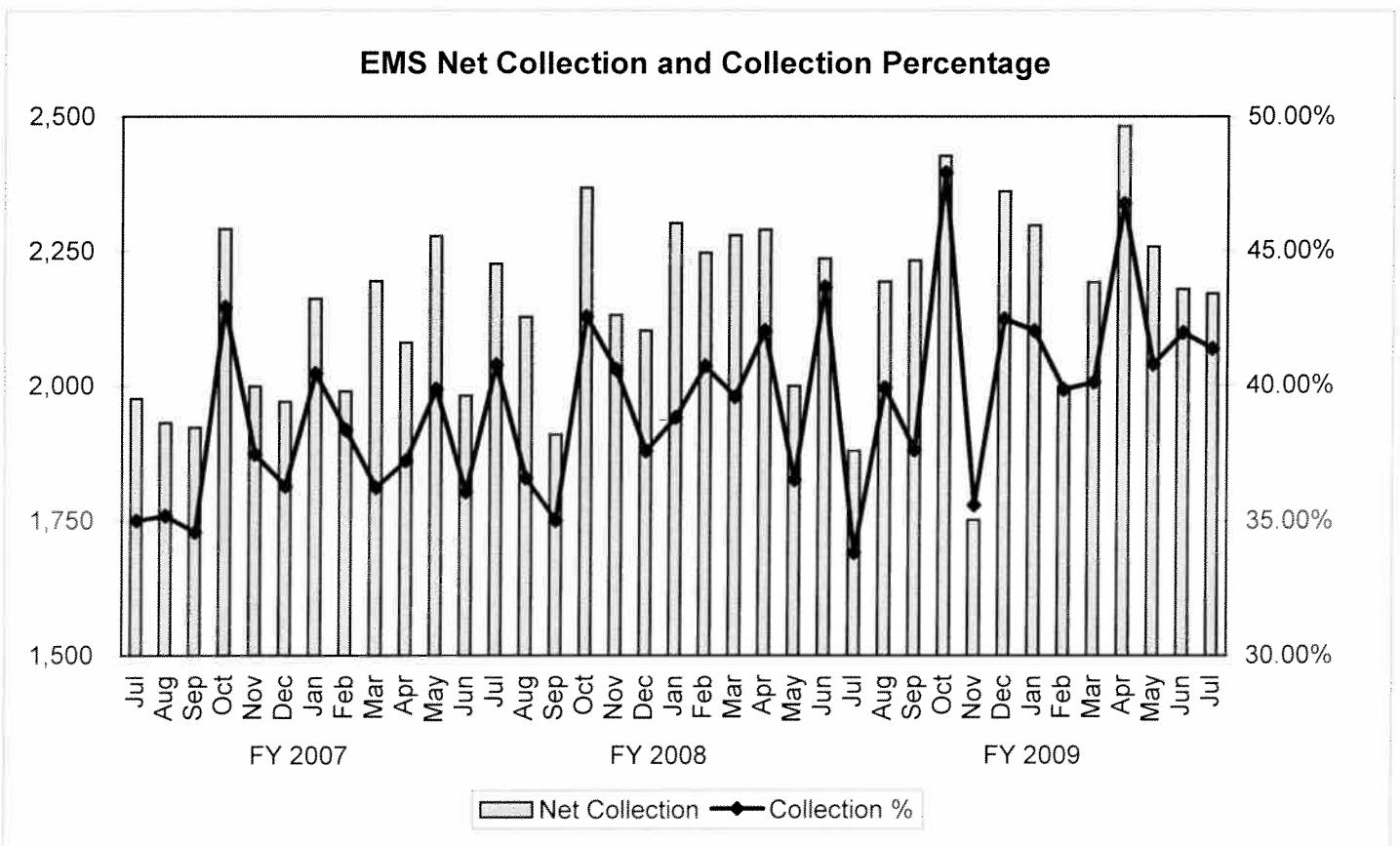
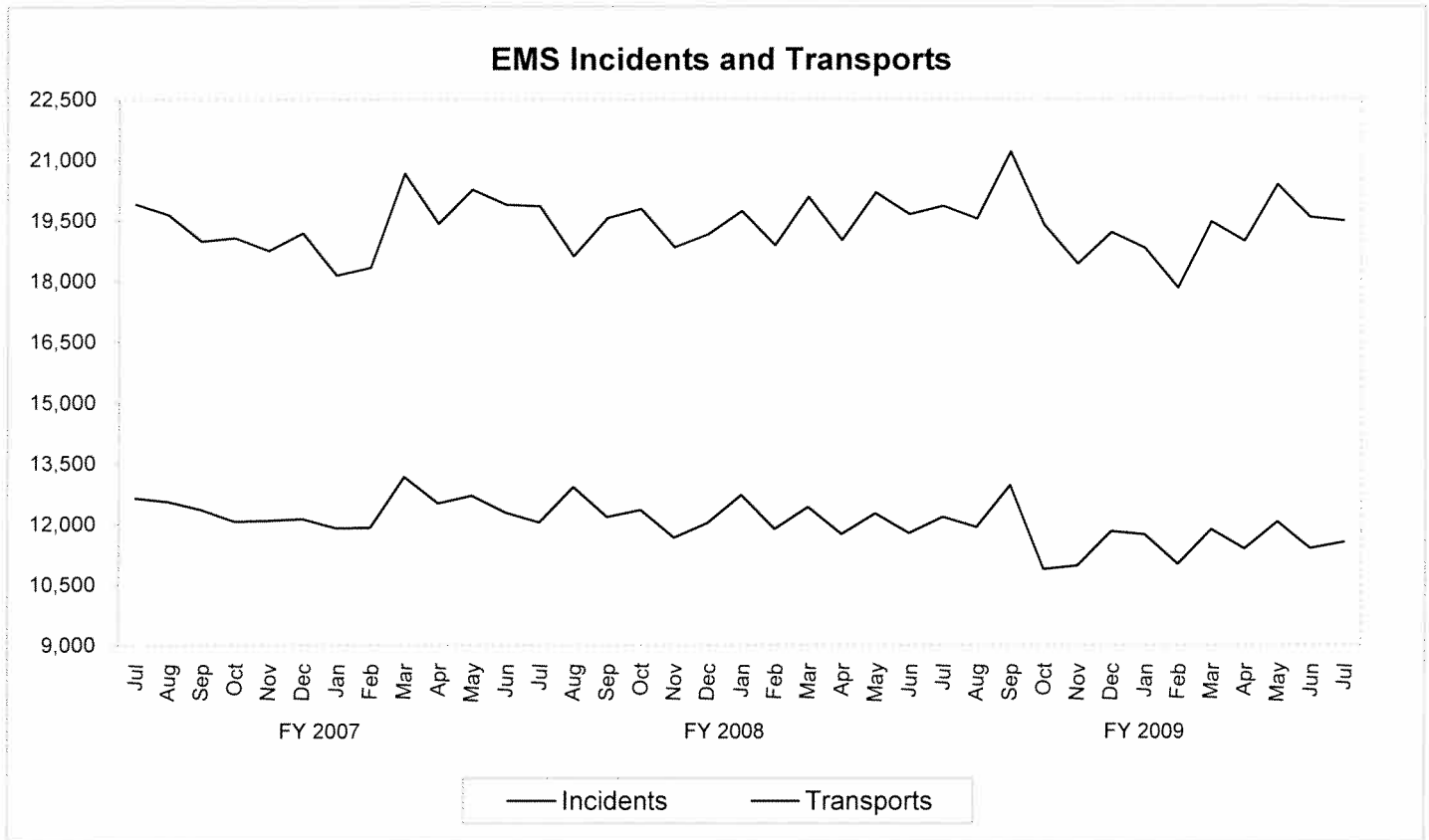
Parking Violations vs Budget



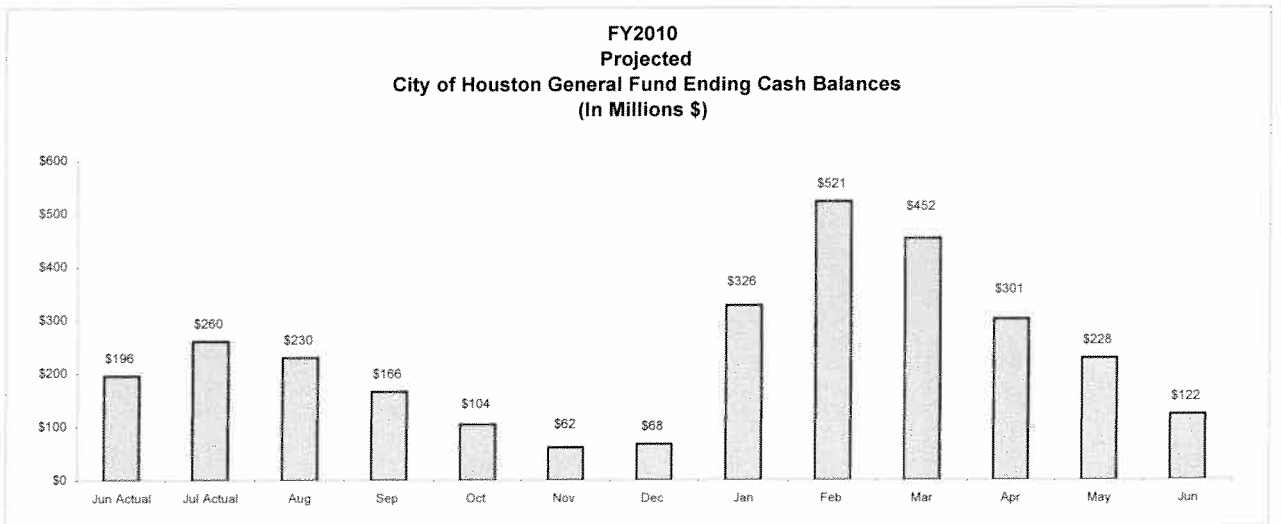
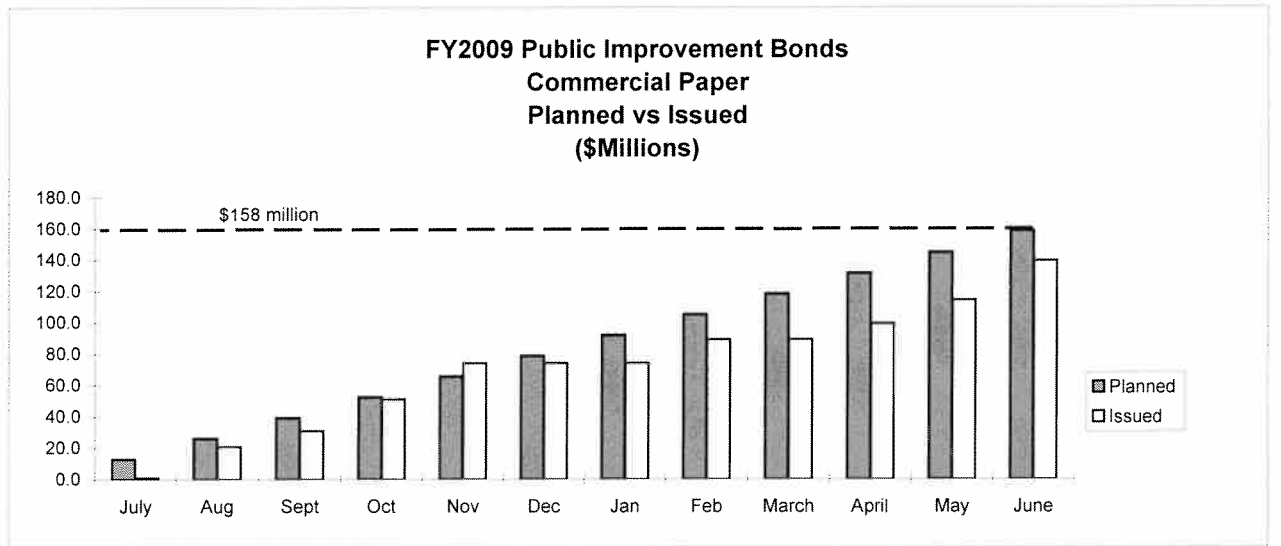
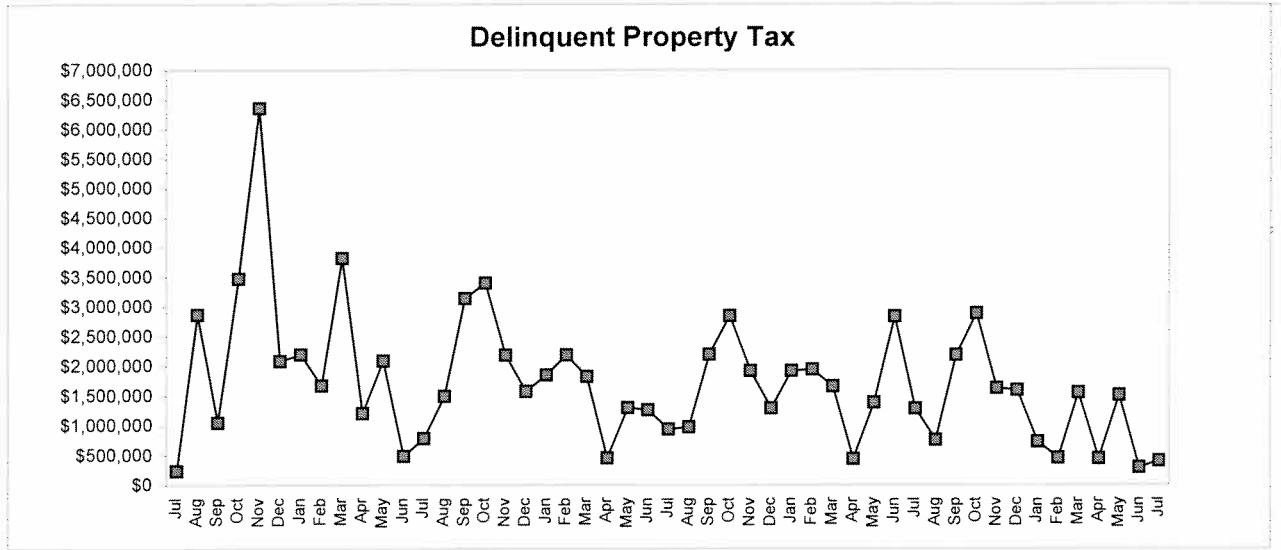
Parking Meter Violations Delinquent Collections Rate



TREND INDICATORS - AMBULANCE SERVICES

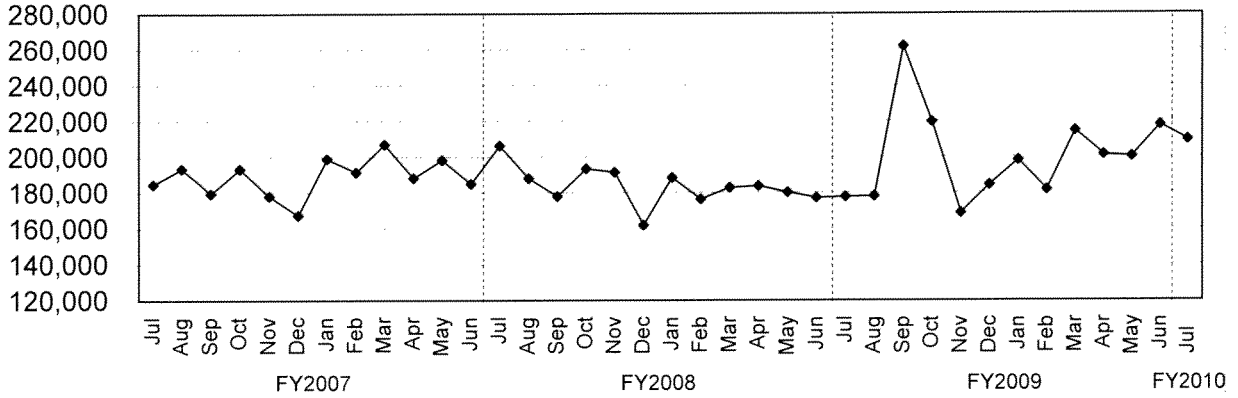


TREND INDICATORS - MISCELLANEOUS



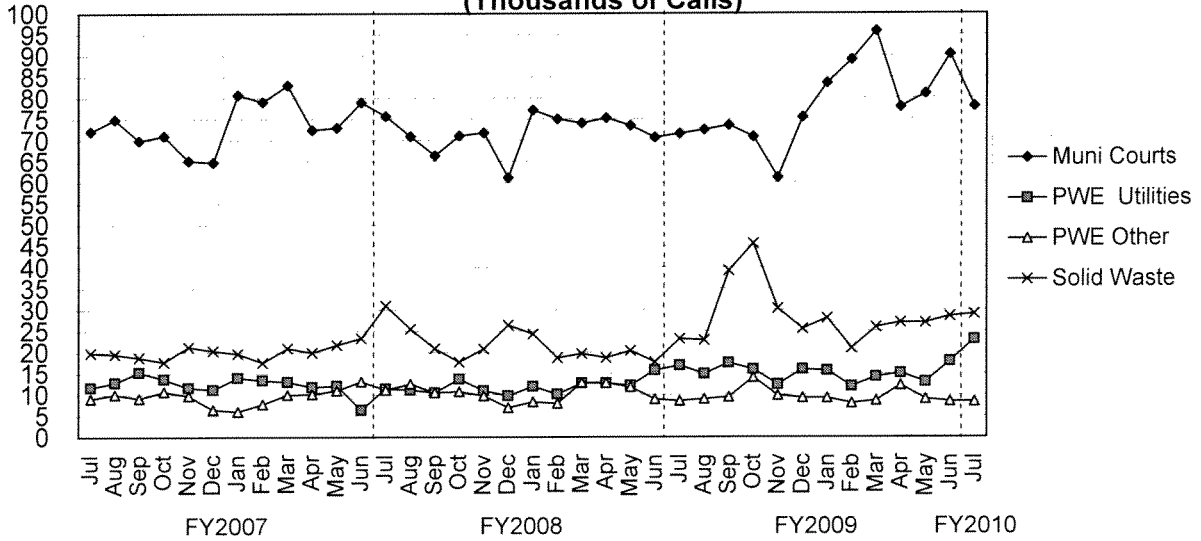
TREND INDICATORS - MISCELLANEOUS

3-1-1 Call Volume



3-1-1 became fully operational in August 2001

Operator Assisted 3-1-1 Call Distribution (Thousands of Calls)



4 largest users of operator assisted 3-1-1 calls.