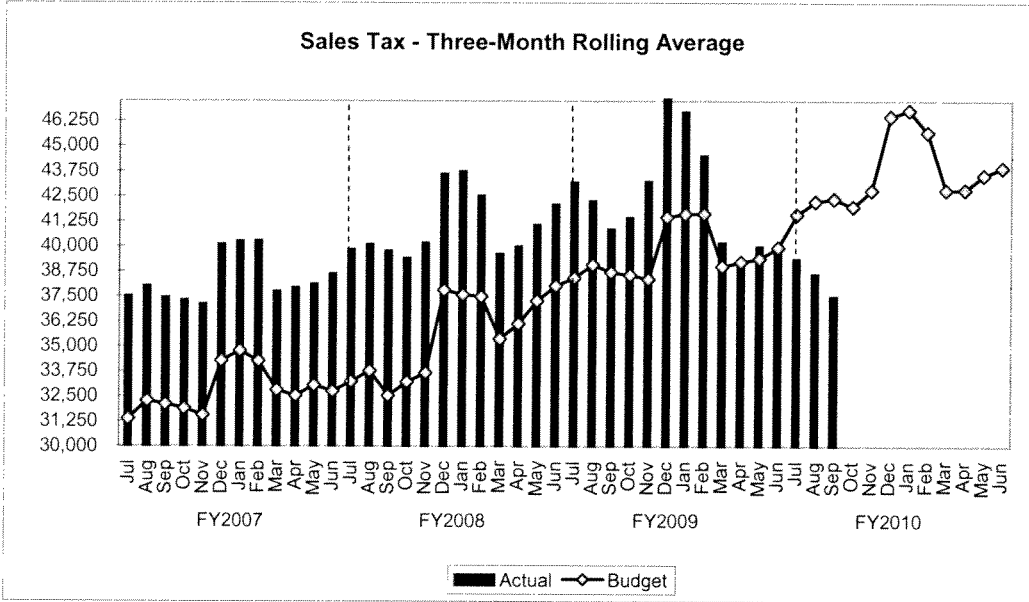
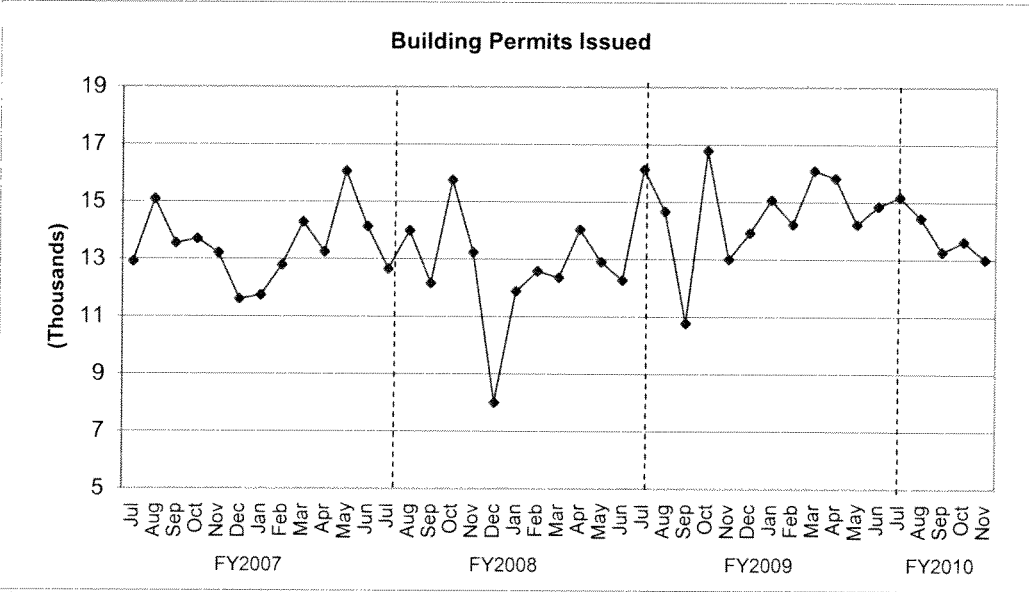


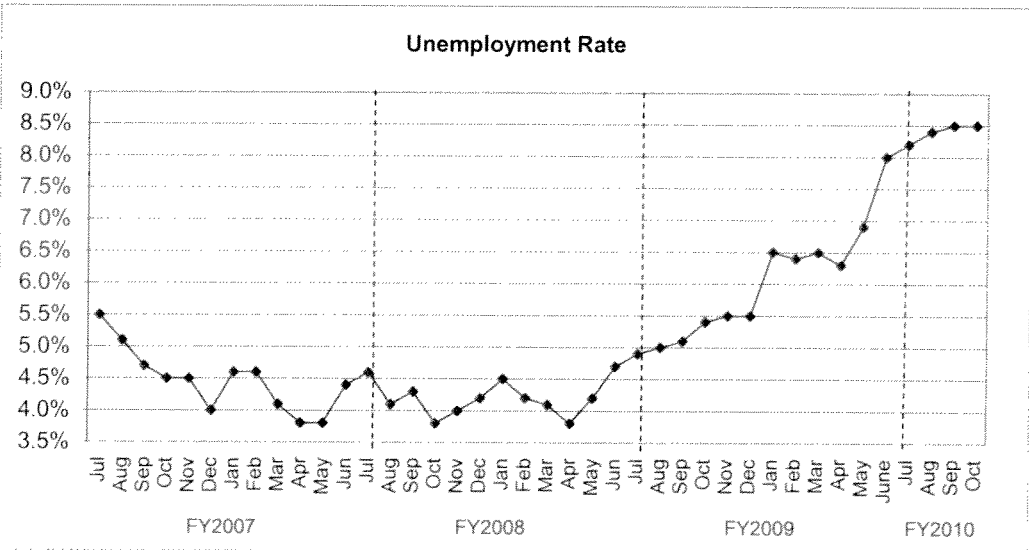
## TREND INDICATORS - LOCAL ECONOMY



Source: Office of State Comptroller

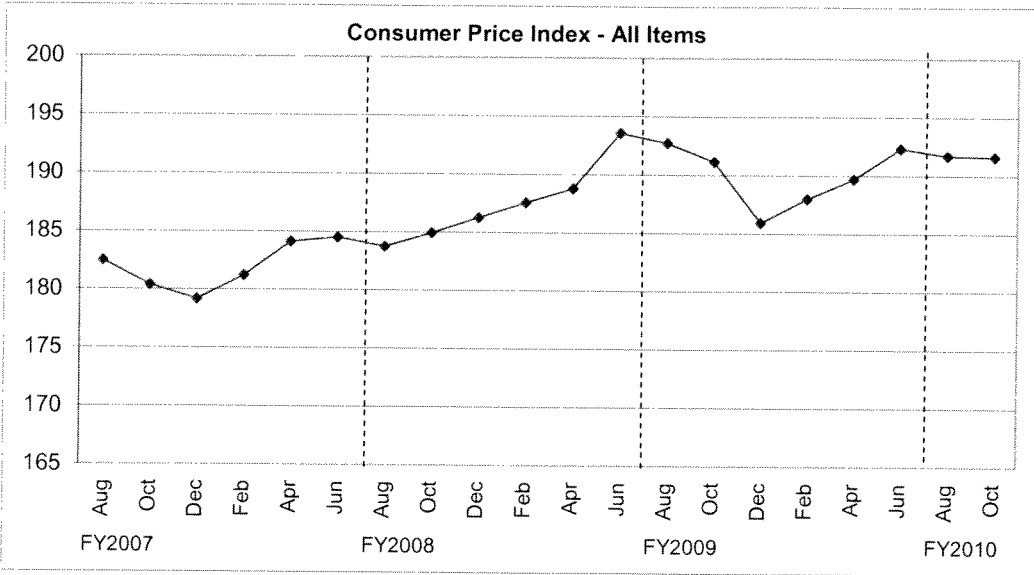


Source: City of Houston Planning and Development Department

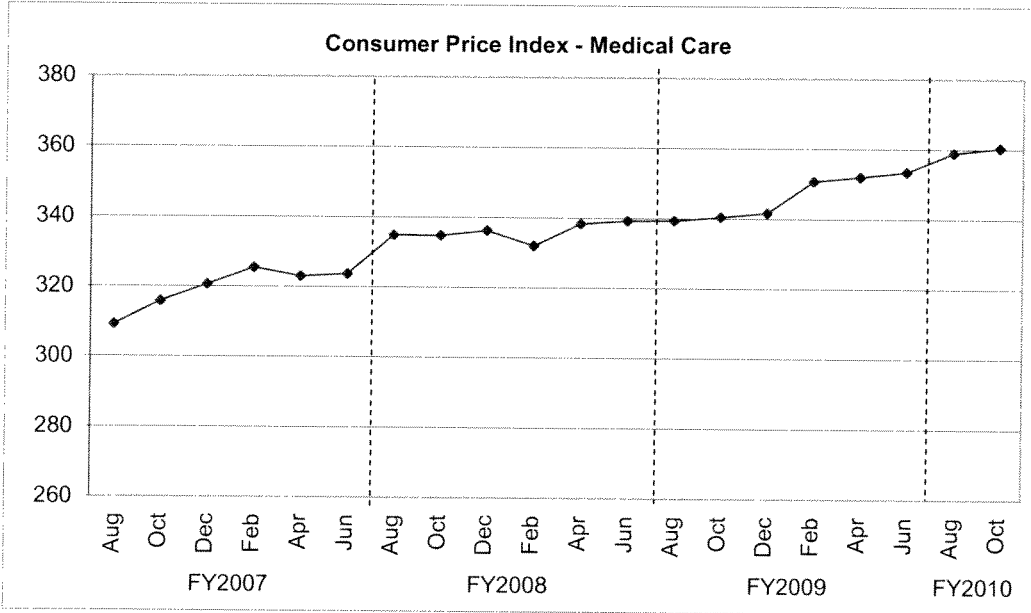


Source: Databook Houston; University of Houston Center for Public Policy; not seasonally adjusted

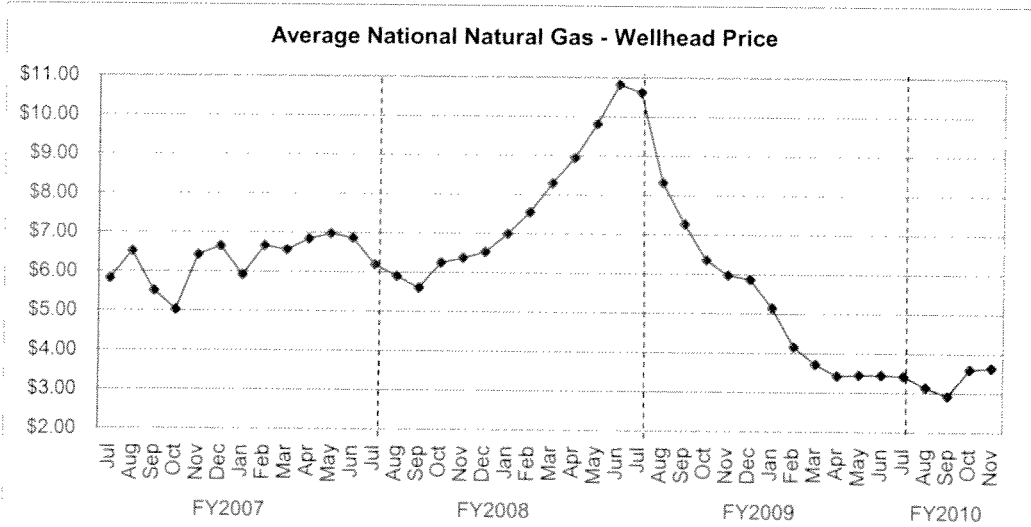
## TREND INDICATORS - LOCAL ECONOMY



Source: Bureau of Labor Statistics - Houston, Galveston, Brazoria TX



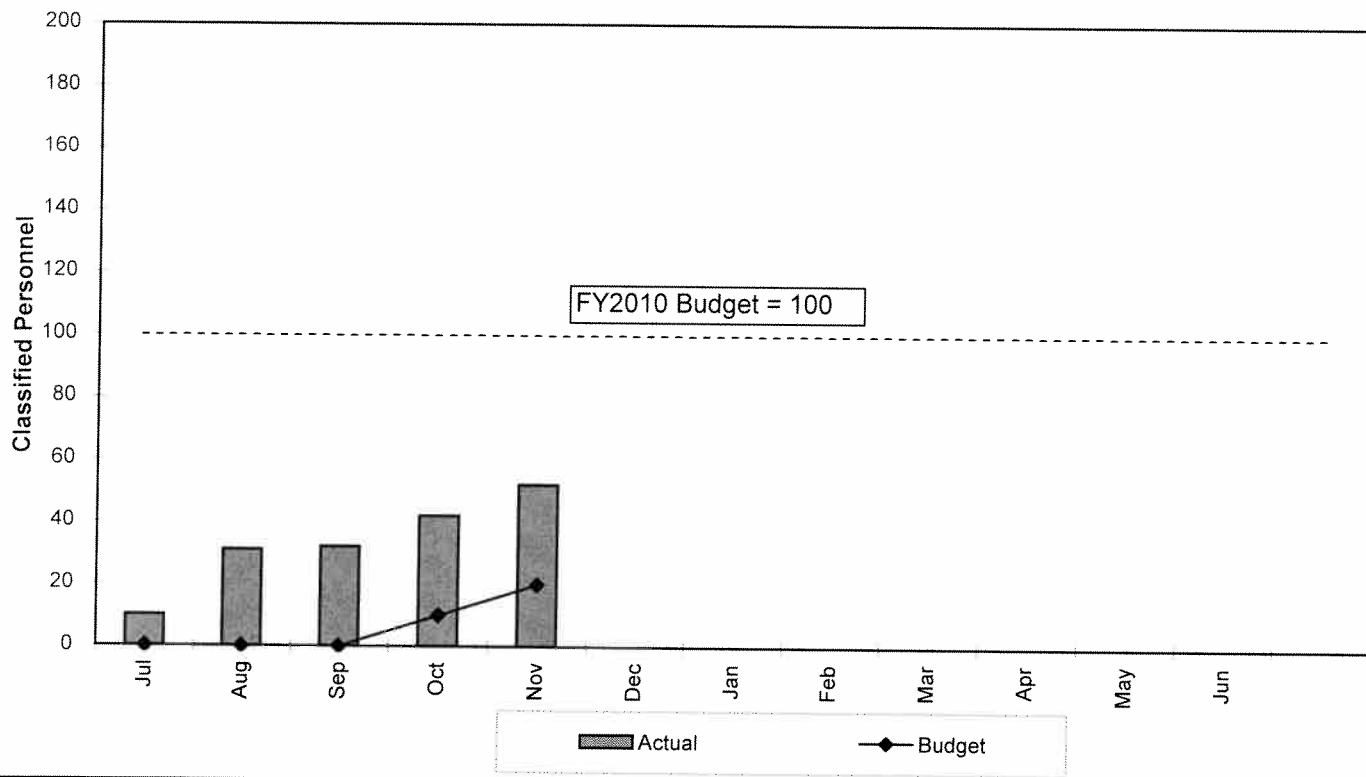
Source: Bureau of Labor Statistics - Houston, Galveston, Brazoria TX



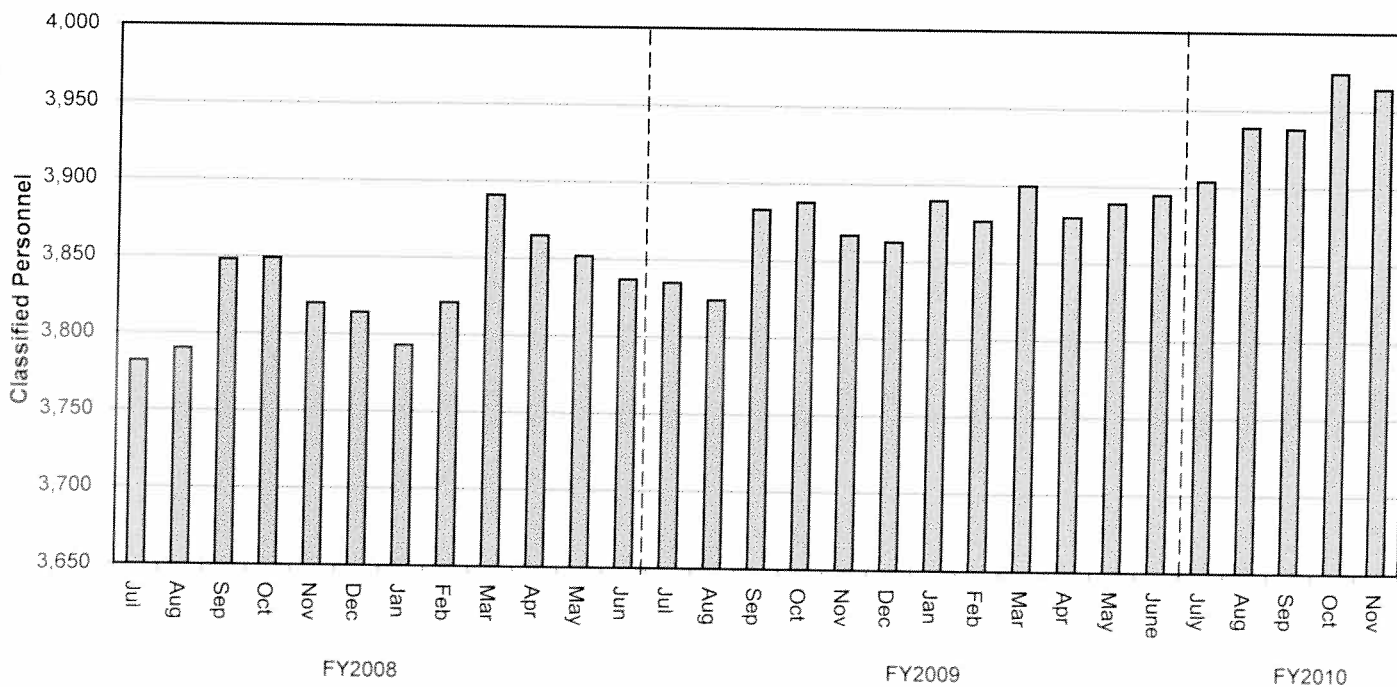
Source: Energy Information Administration/Natural Gas Monthly

# TREND INDICATORS - RETIREMENTS

Houston Fire Department  
FY2010 Classified Attrition

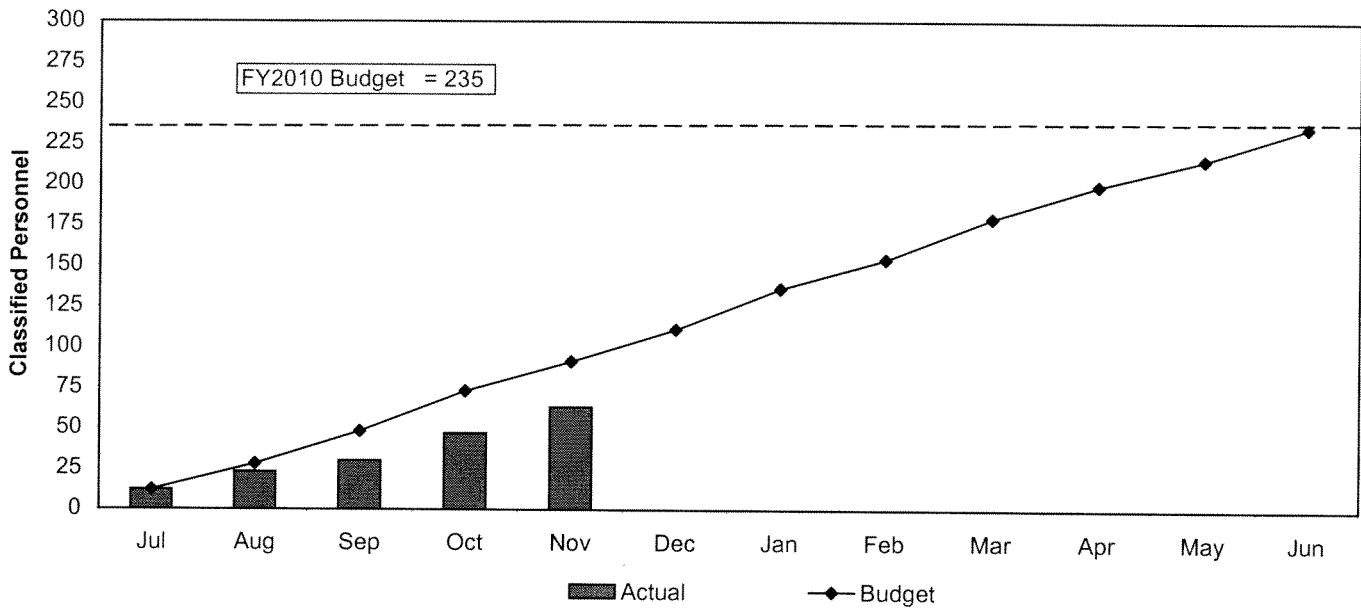


Houston Fire Department  
Classified Staffing - FY2008 to FY2010

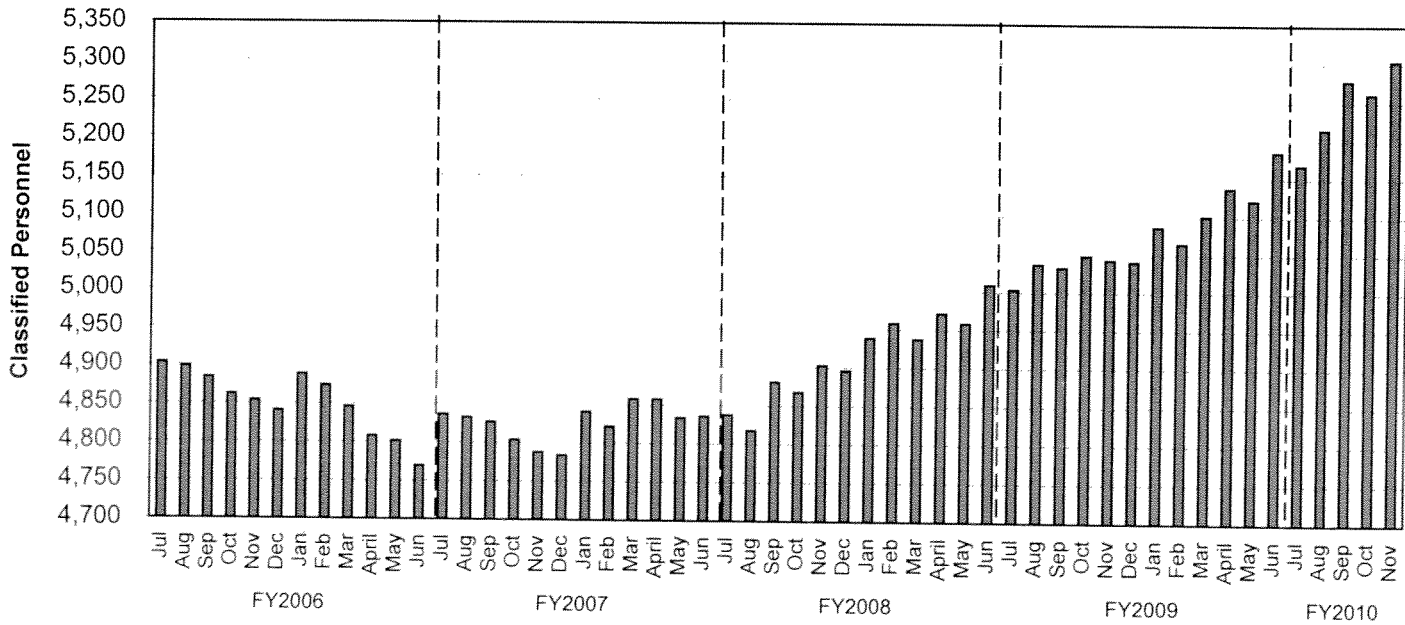


## TREND INDICATORS - HIRING AND RETIREMENTS

### Houston Police Department FY2010 Classified Attrition

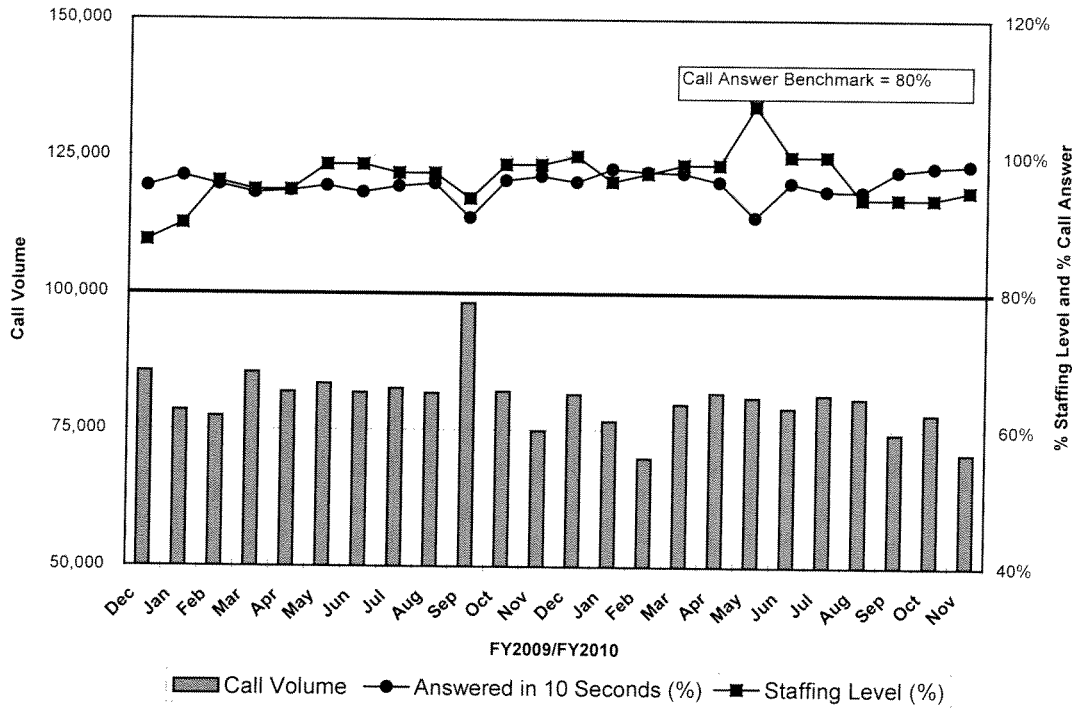


### Houston Police Department Classified Staffing - FY2006 to FY2010

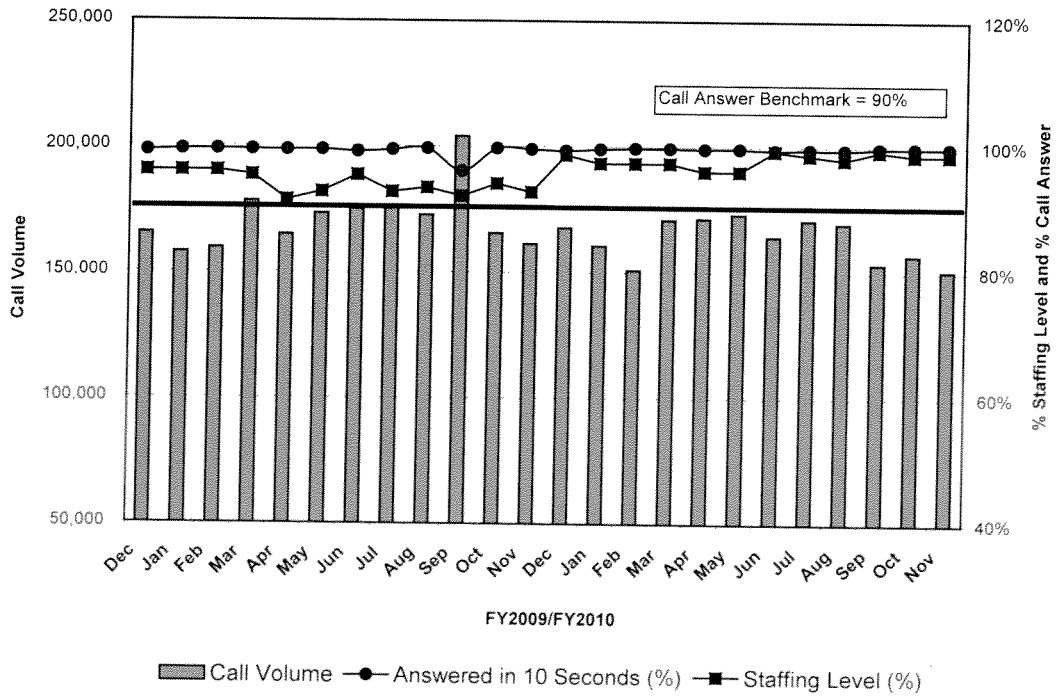


# TREND INDICATORS - HOUSTON EMERGENCY CENTER

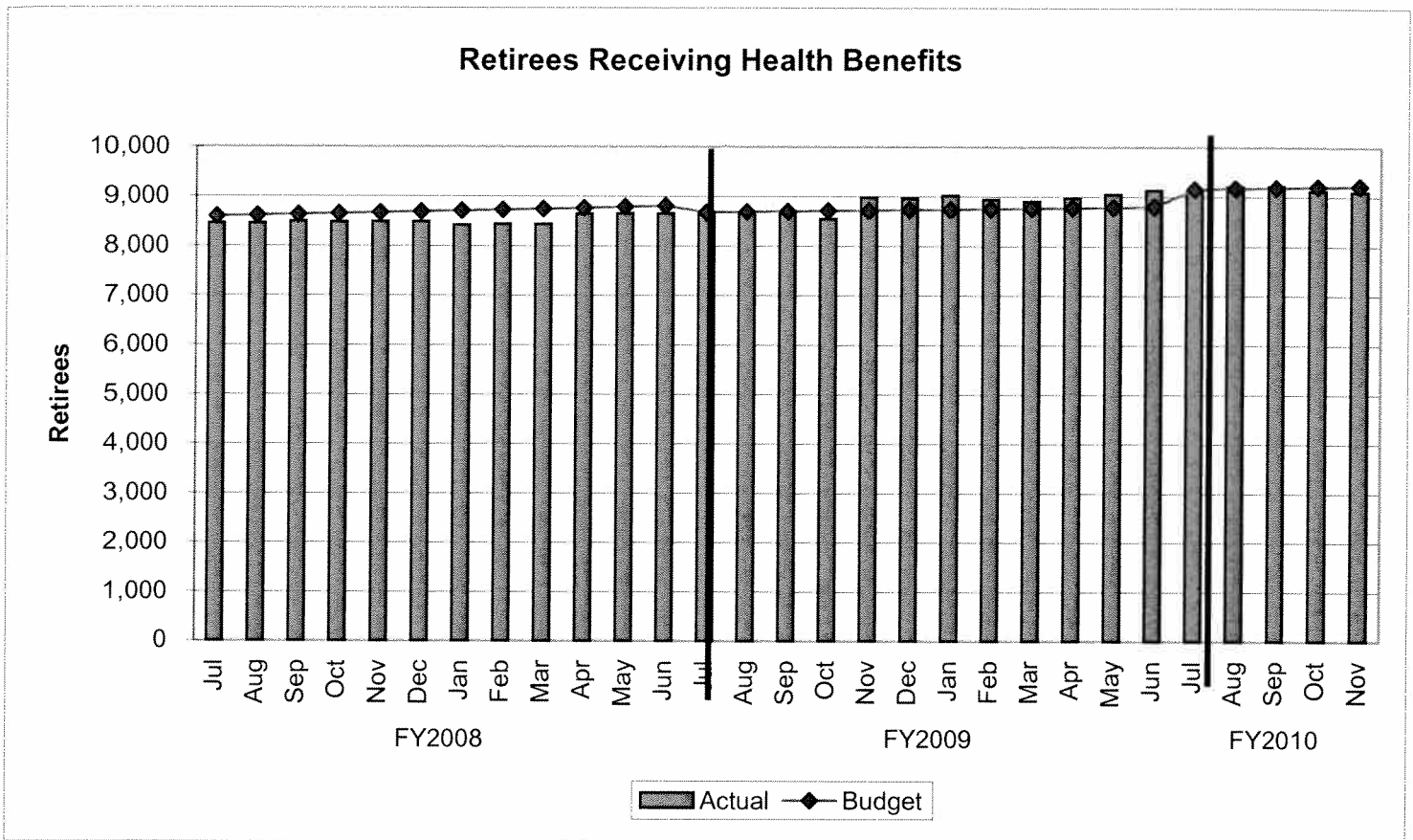
## Houston Emergency Center: Police 10-Digit



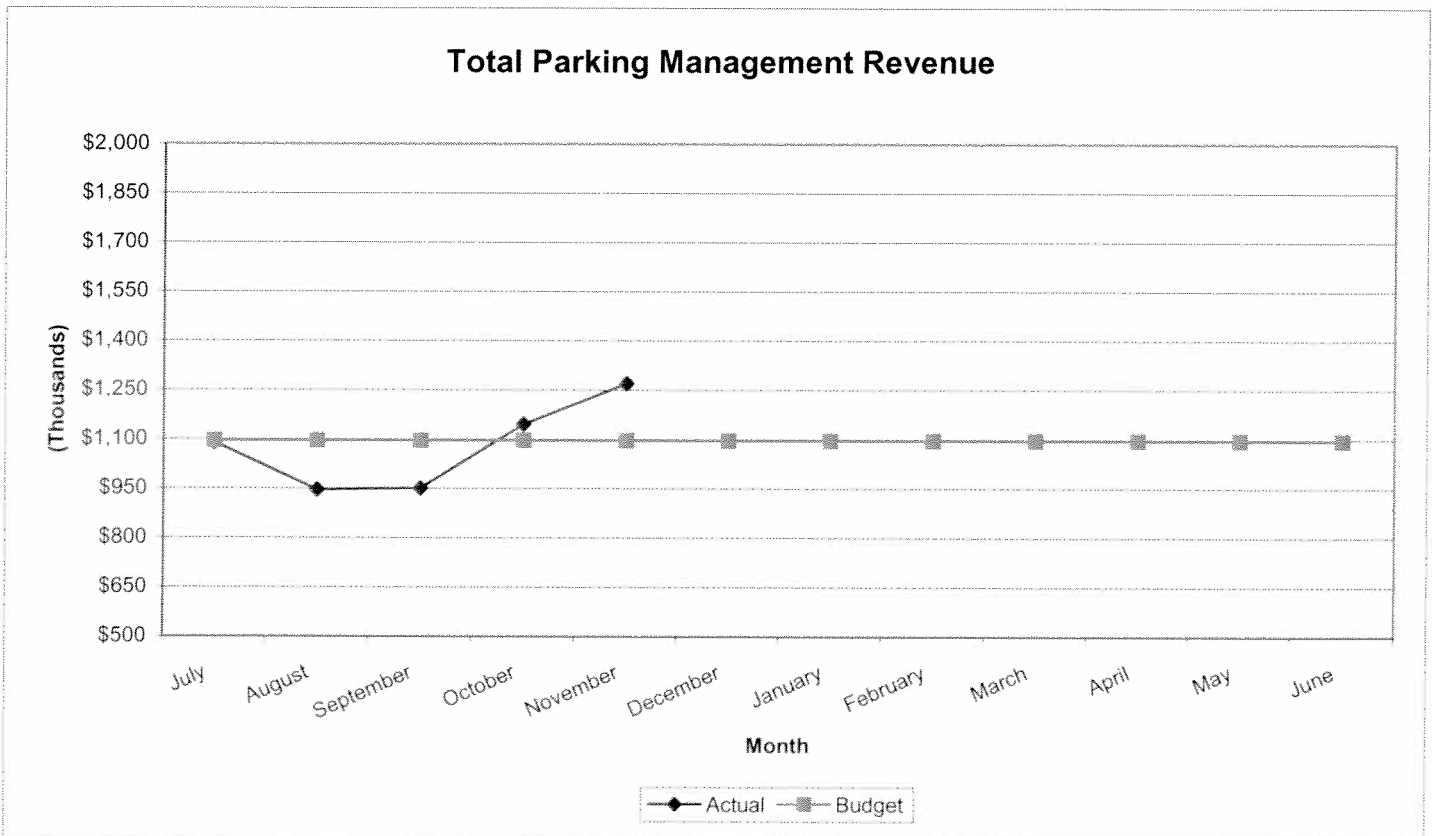
## Houston Emergency Center: 9-1-1 Neutral Calls



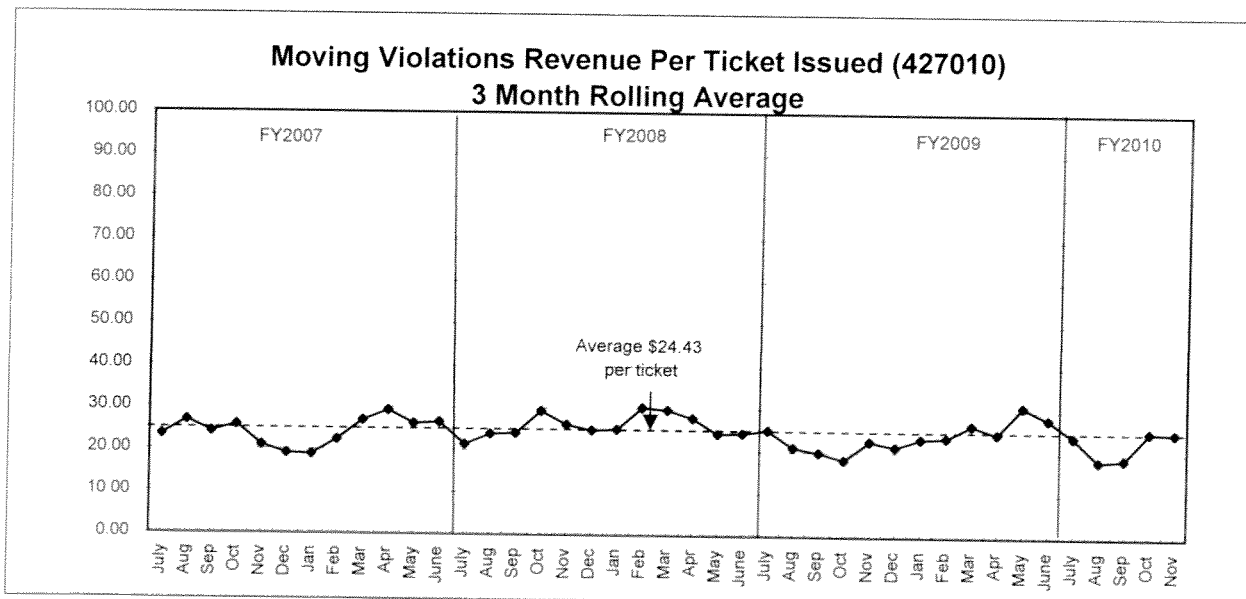
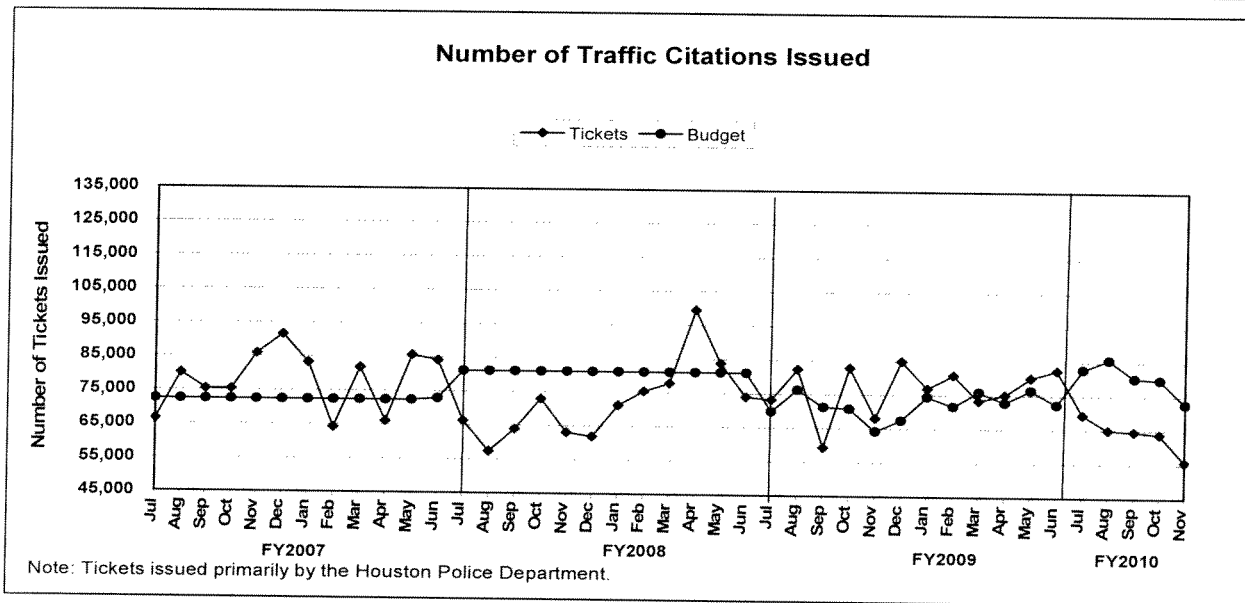
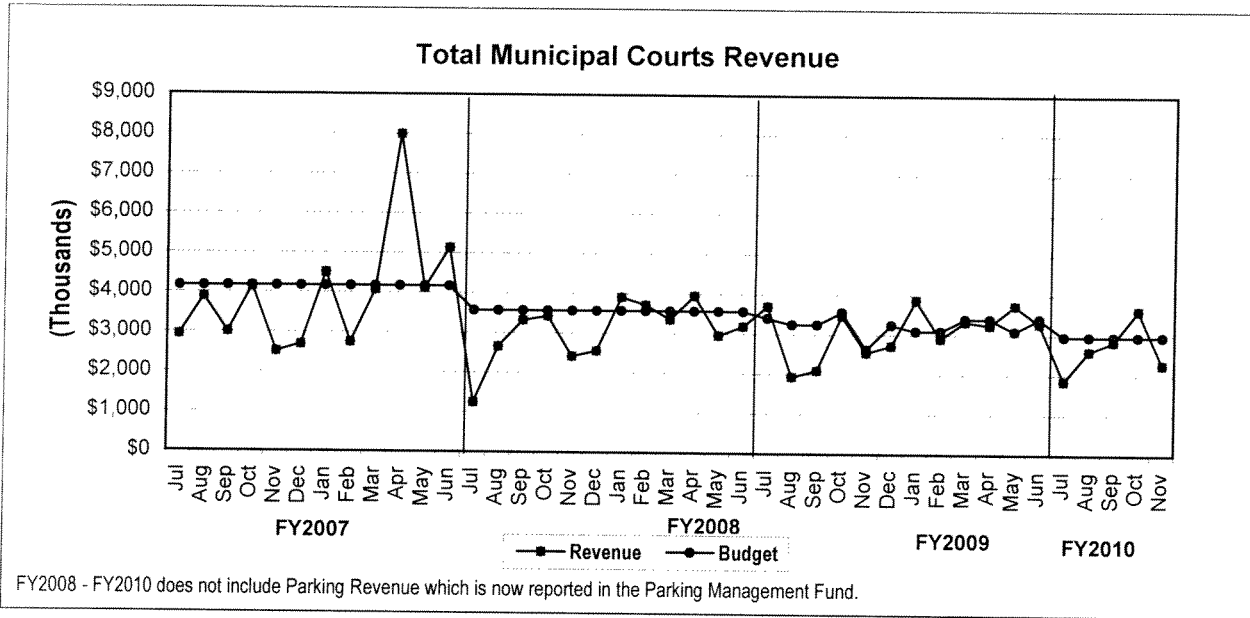
## TREND INDICATORS - RETIREMENTS



## TREND INDICATORS - PARKING MANAGEMENT

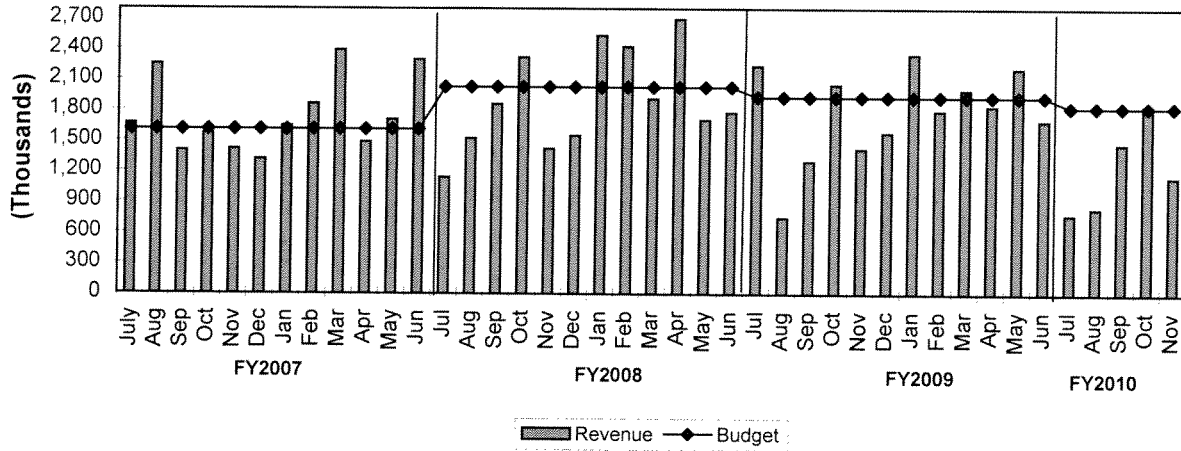


# TREND INDICATORS - MUNICIPAL COURTS

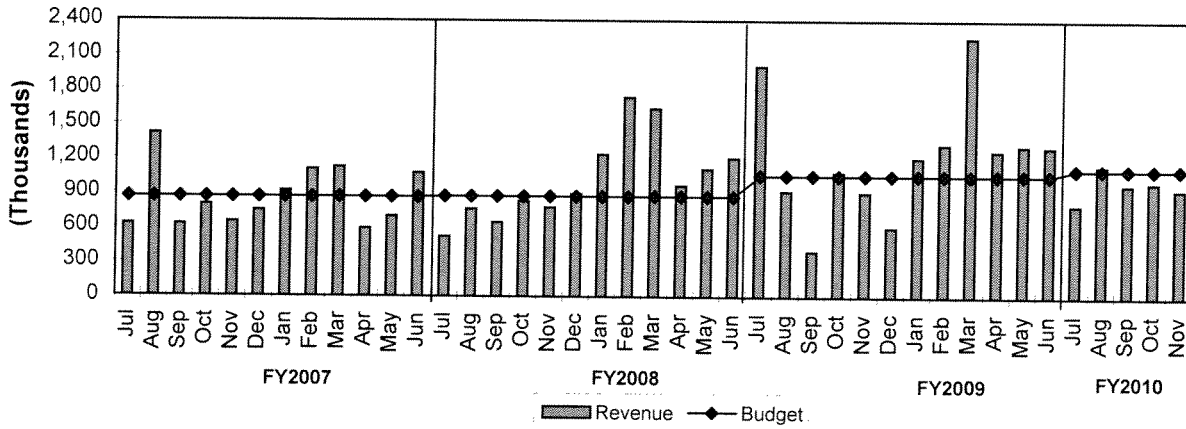


# TREND INDICATORS - MUNICIPAL COURTS

## Moving Violations Collections vs Budget

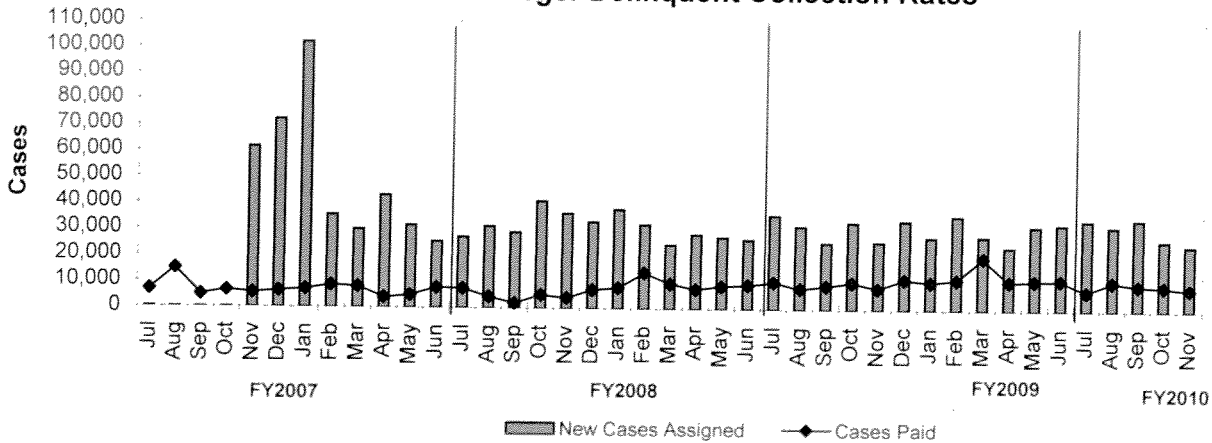


## Total Delinquent Collections vs Budget\*



\*Net of fees and expenses paid to Linebarger

## Traffic, Non-Traffic & Failure to Appear Linebarger Delinquent Collection Rates

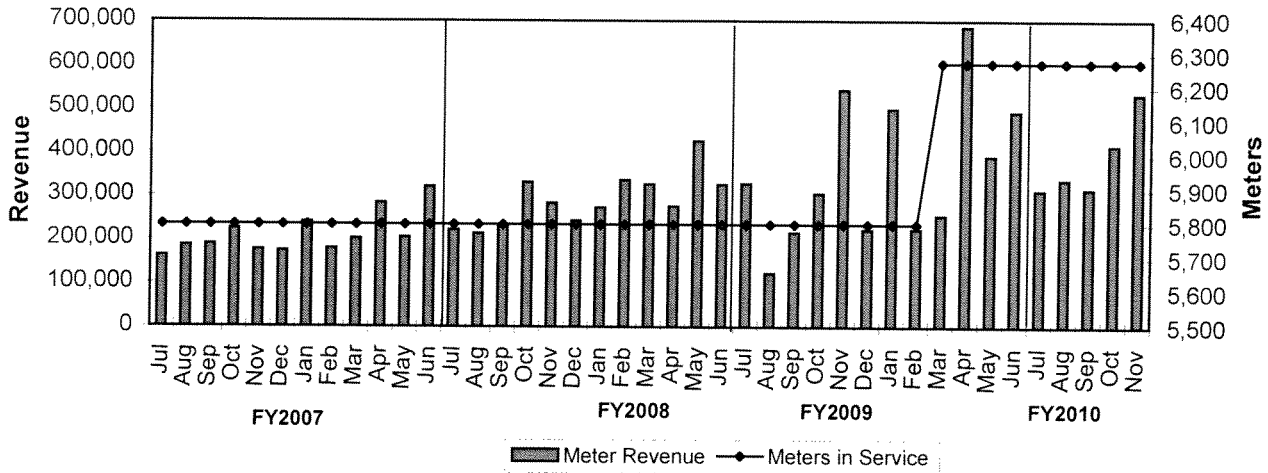


\*Excludes Delinquent Parking Collections

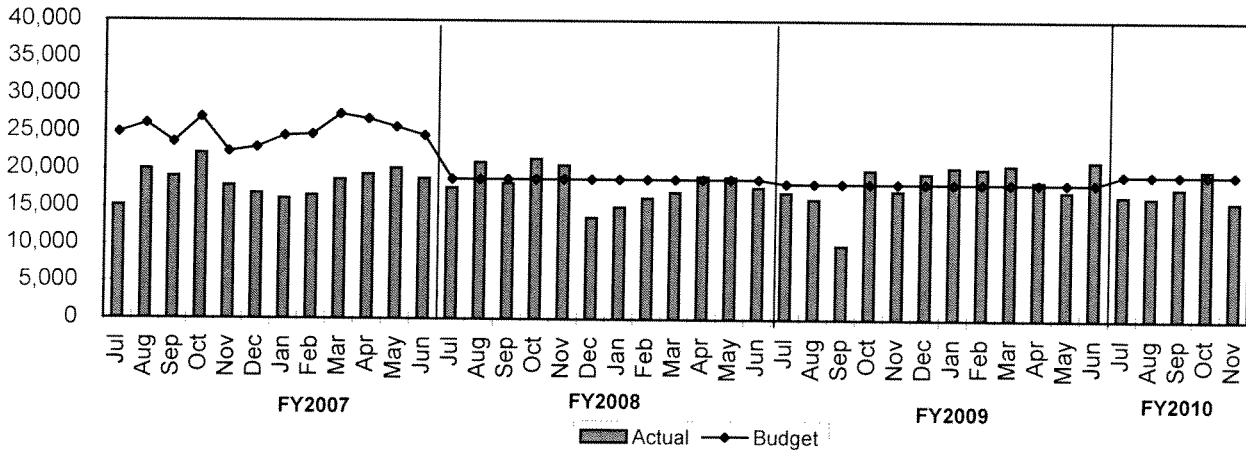


# TREND INDICATORS - MUNICIPAL COURTS

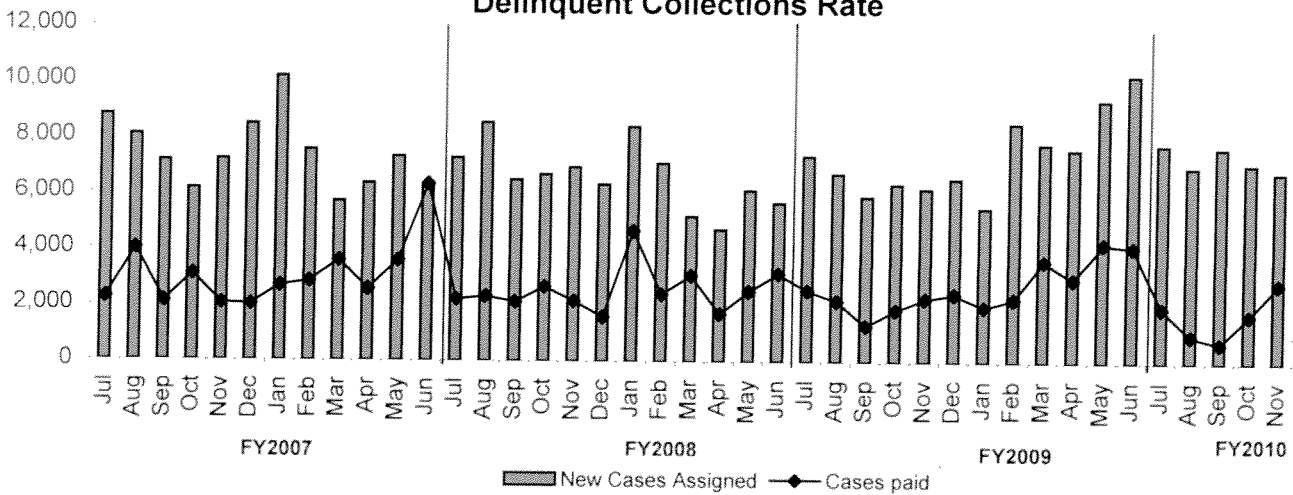
## Meter Revenue vs # Meters in Service



## Parking Violations vs Budget

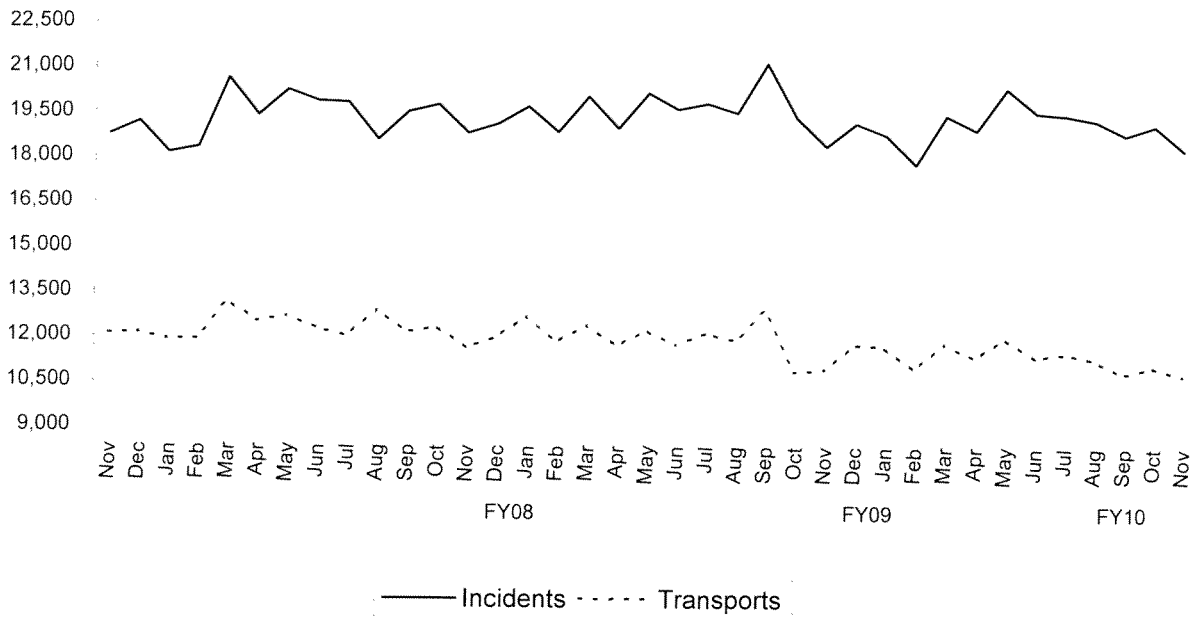


## Parking Meter Violations Delinquent Collections Rate

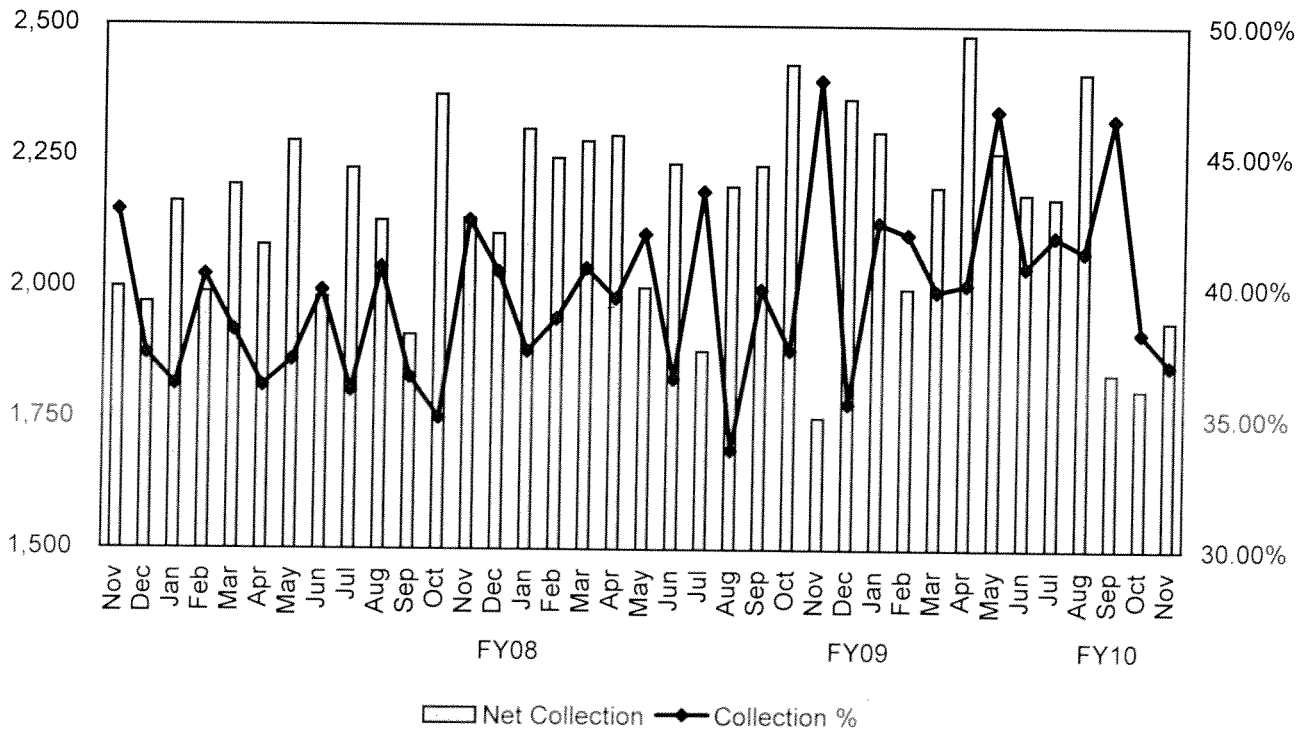


# TREND INDICATORS - AMBULANCE SERVICES

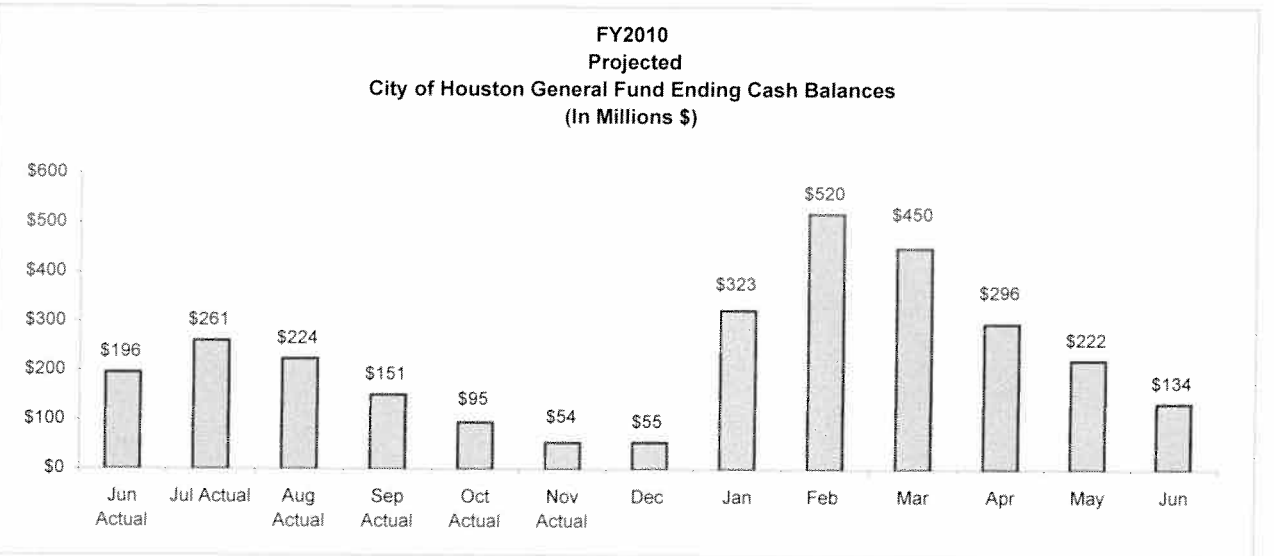
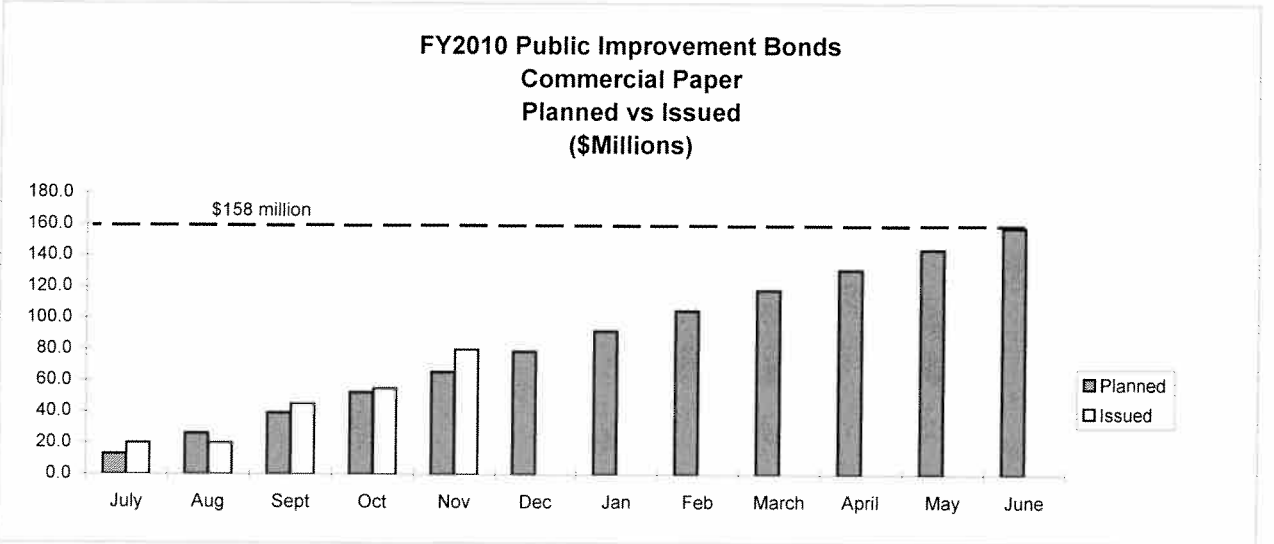
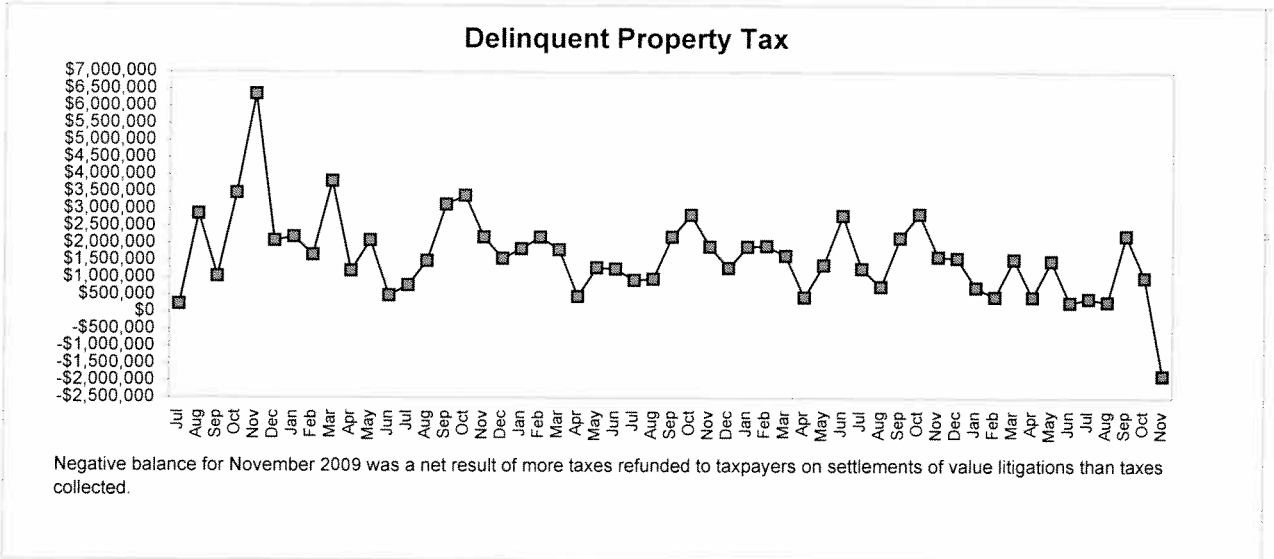
## EMS Incidents and Transports



## EMS Net Collections & Collection Percentage

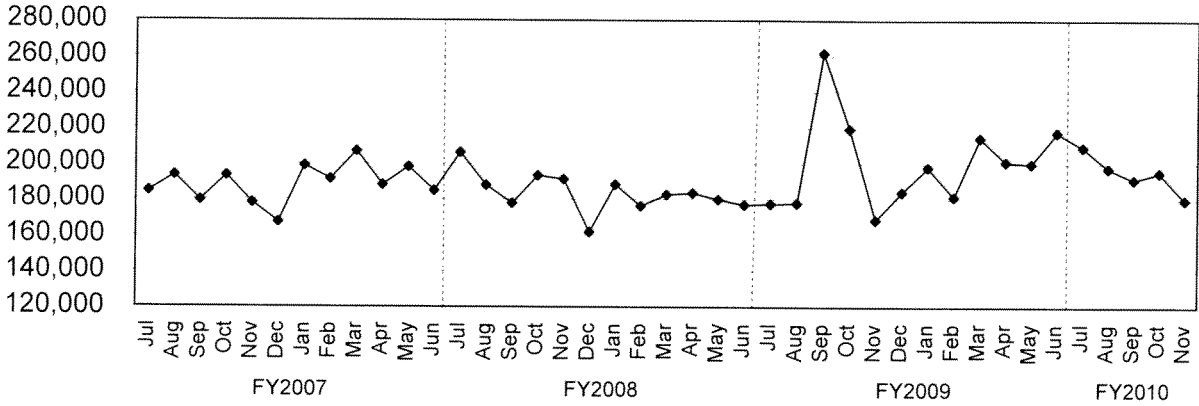


## TREND INDICATORS - MISCELLANEOUS



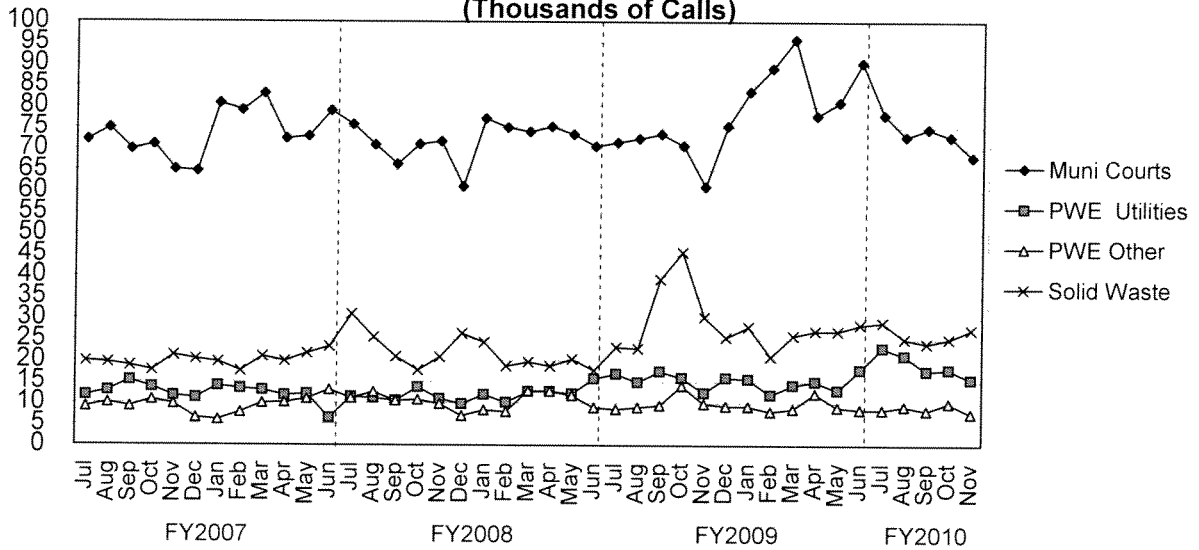
# TREND INDICATORS - MISCELLANEOUS

## 3-1-1 Call Volume



3-1-1 became fully operational in August 2001

## Operator Assisted 3-1-1 Call Distribution (Thousands of Calls)



4 largest users of operator assisted 3-1-1 calls.