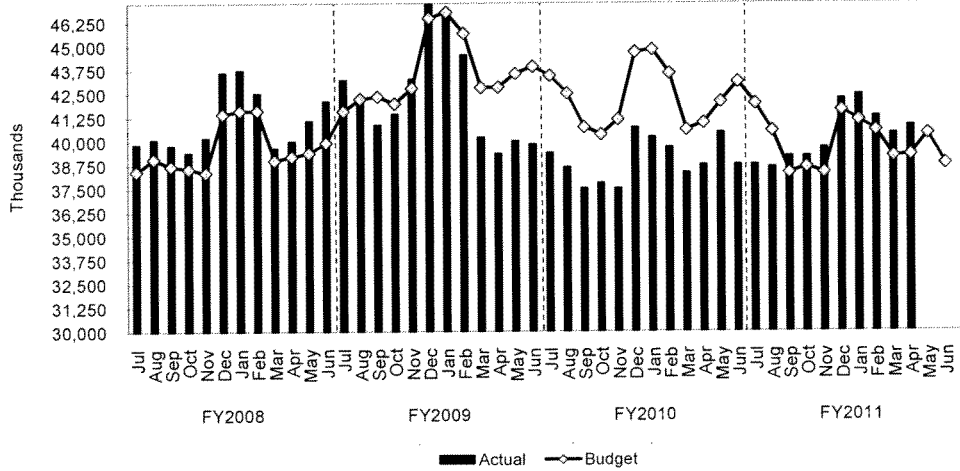


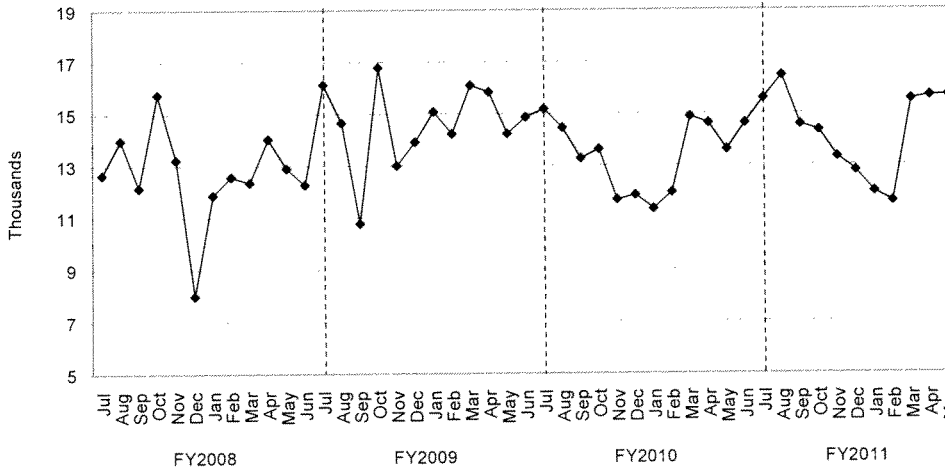
TREND INDICATORS - LOCAL ECONOMY

Sales Tax - Three-Month Rolling Average



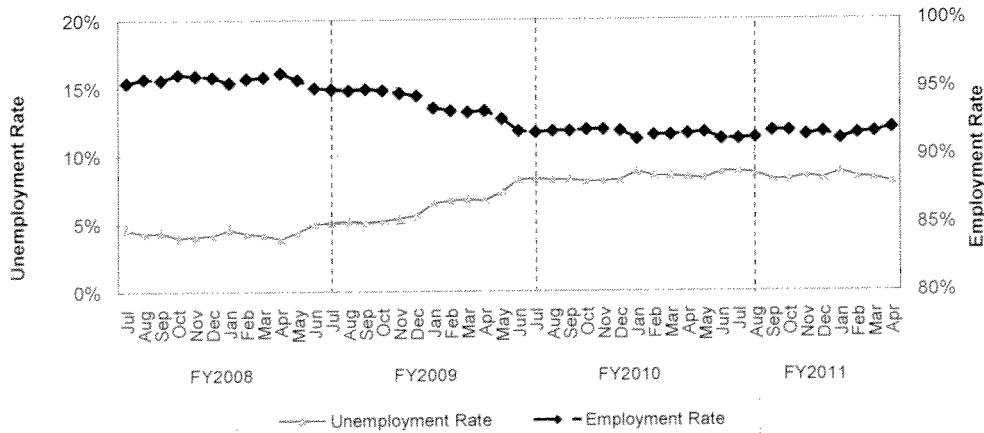
Source: Office of State Comptroller

Building Permits Issued



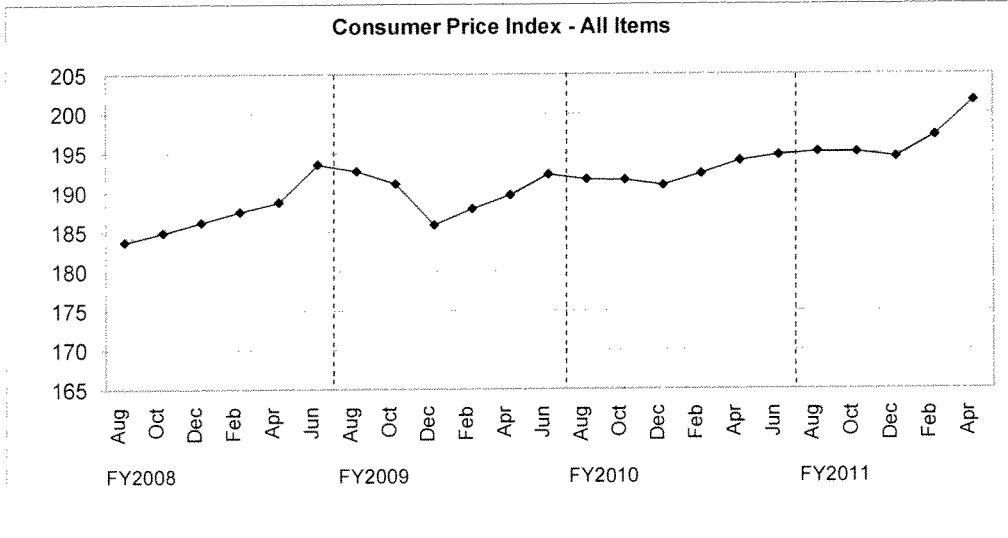
Source: City of Houston Planning and Development Department

Unemployment/Employment Rate

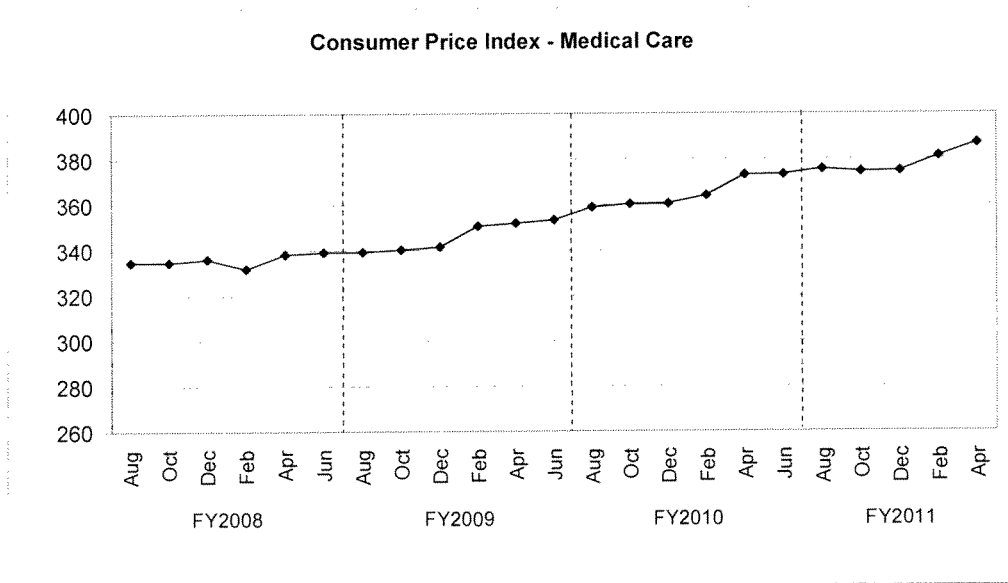


Source: Labor Market & Career Information, Texas Workforce Commission; Houston-Sugar Land-Baytown(MSA)

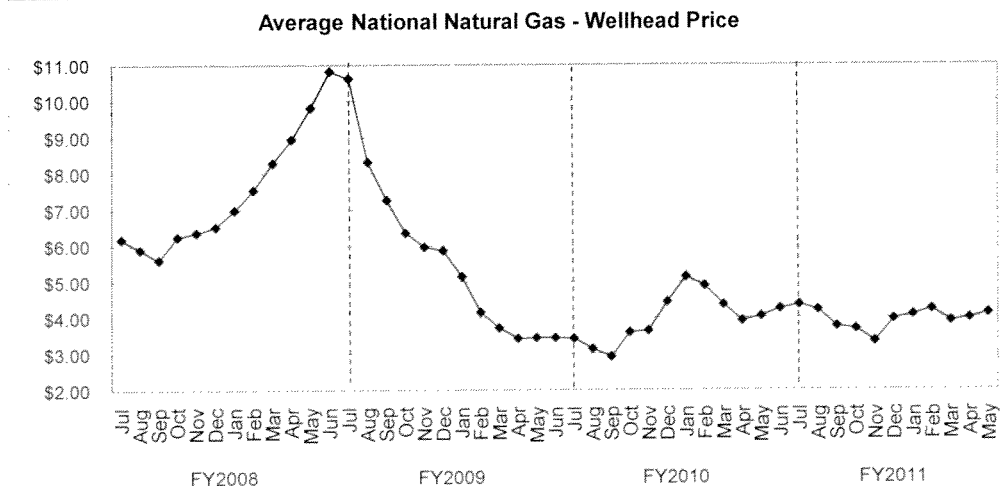
**TREND INDICATORS - LOCAL ECONOMY**



Source: Bureau of Labor Statistics - Houston, Galveston, Brazoria TX

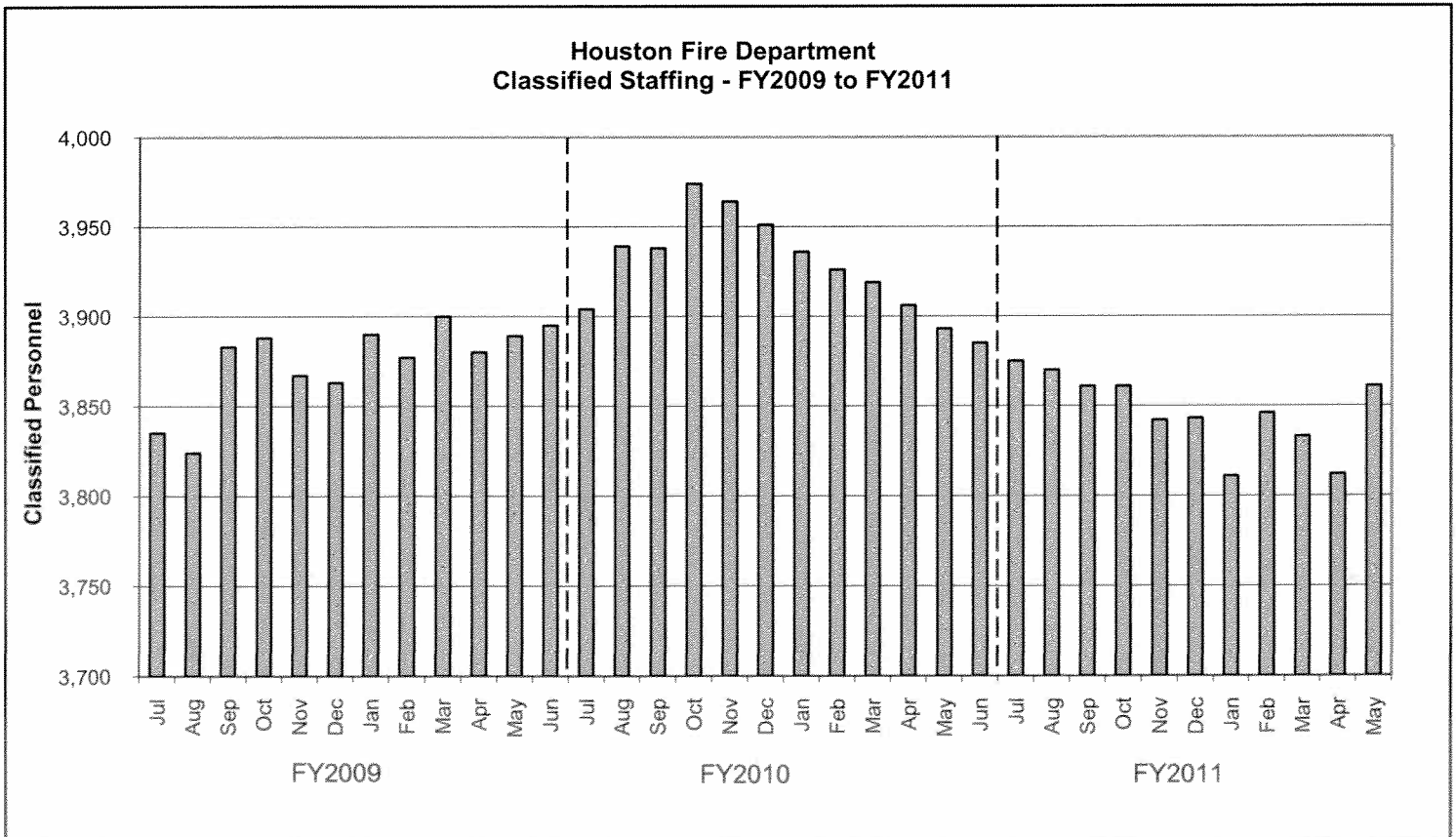
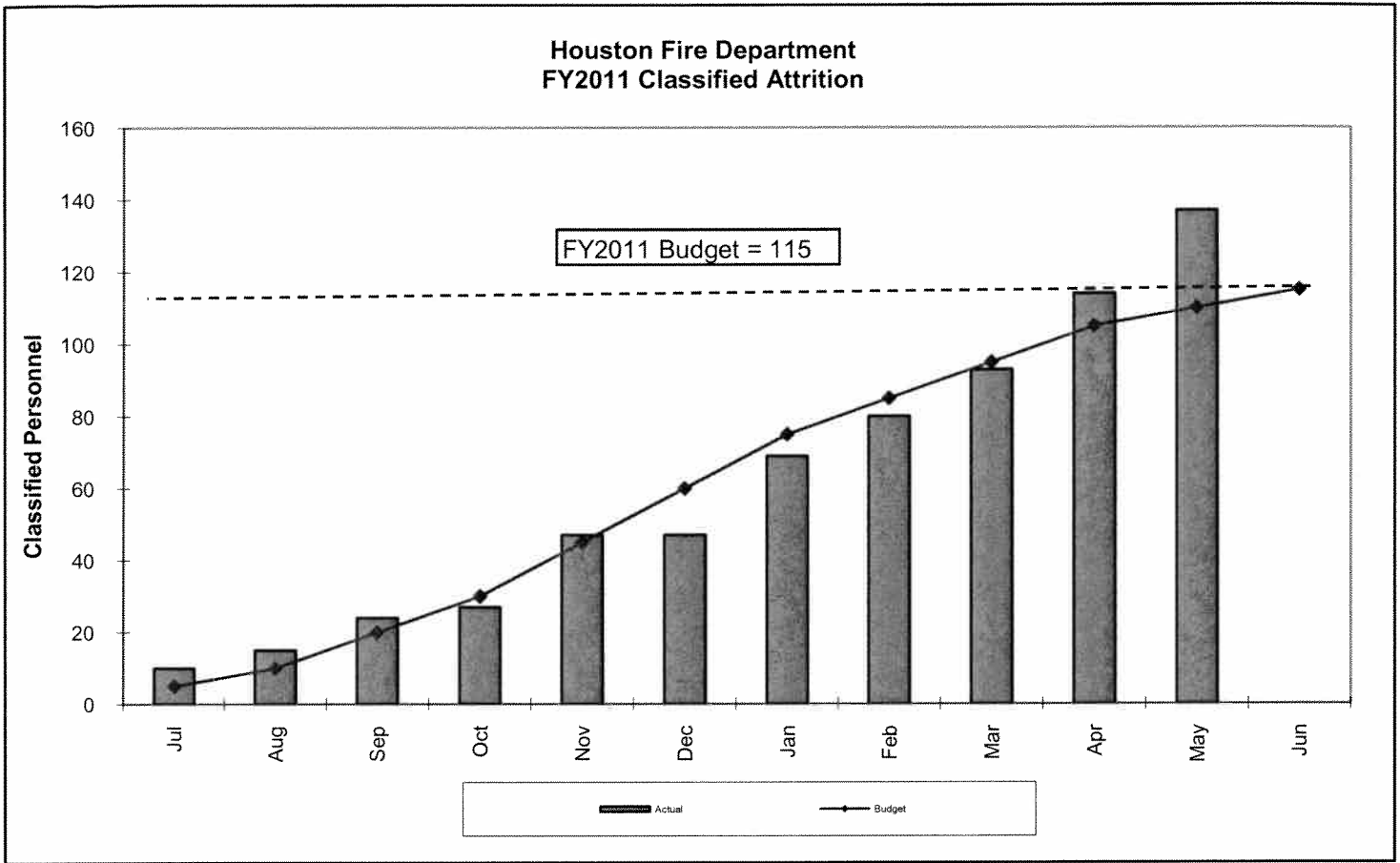


Source: Bureau of Labor Statistics - Houston, Galveston, Brazoria TX



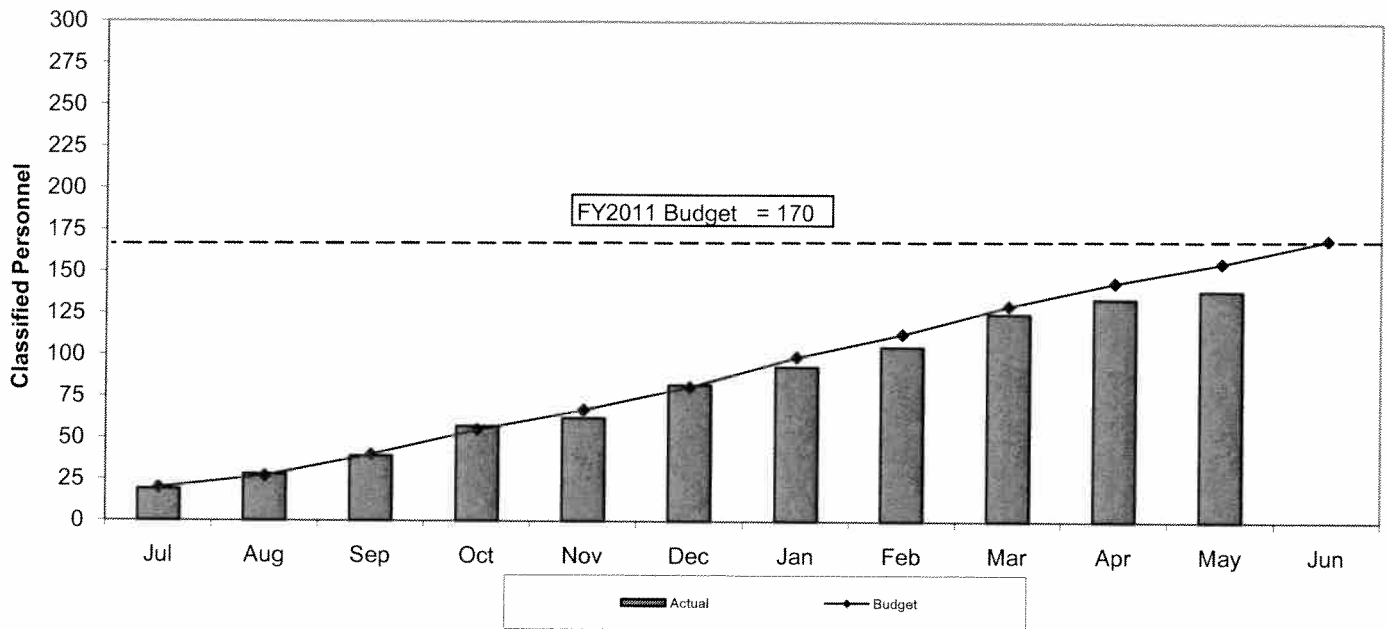
Source: Energy Information Administration/Natural Gas Monthly

# TREND INDICATORS - HOUSTON FIRE DEPARTMENT

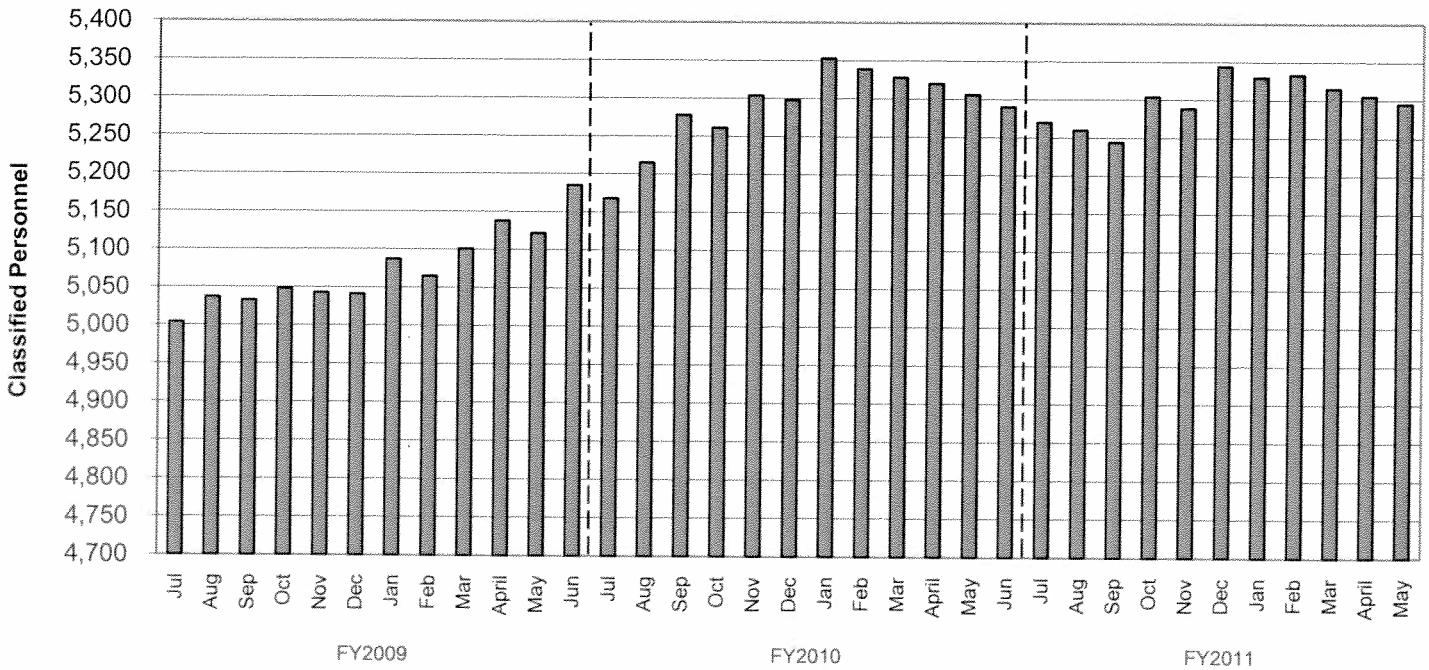


## TREND INDICATORS - HOUSTON POLICE DEPARTMENT

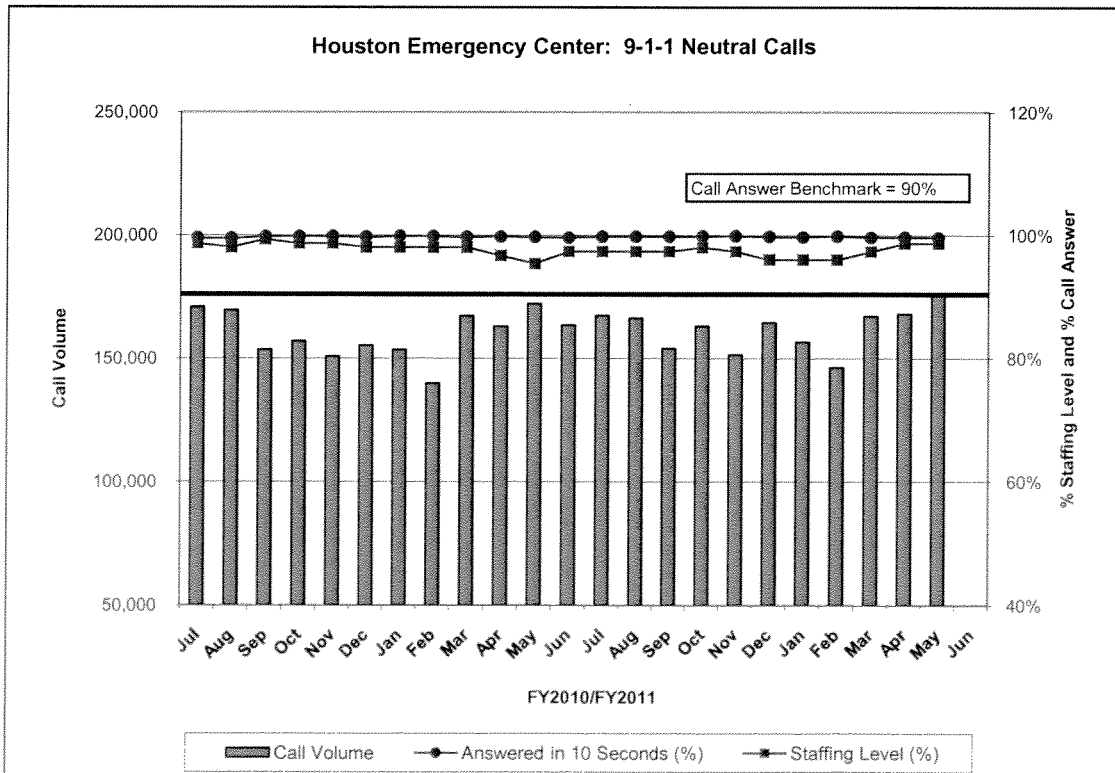
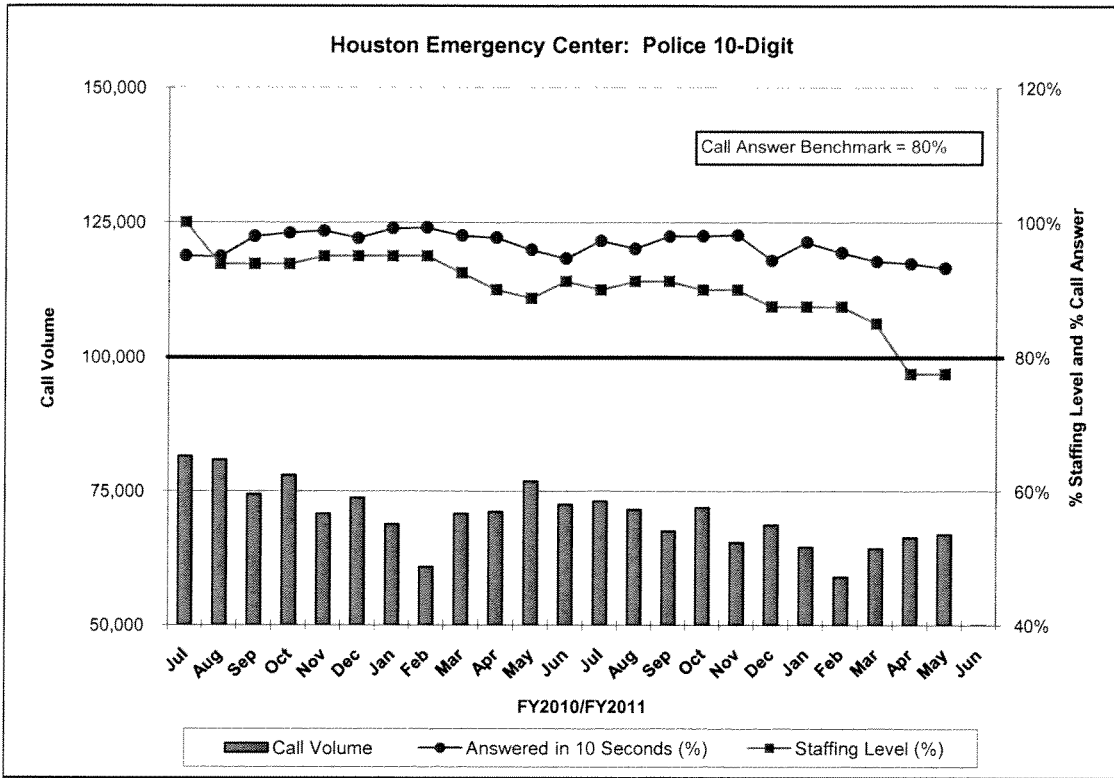
**Houston Police Department  
FY2011 Classified Attrition**



**Houston Police Department  
Classified Staffing - FY2009 to FY2011**

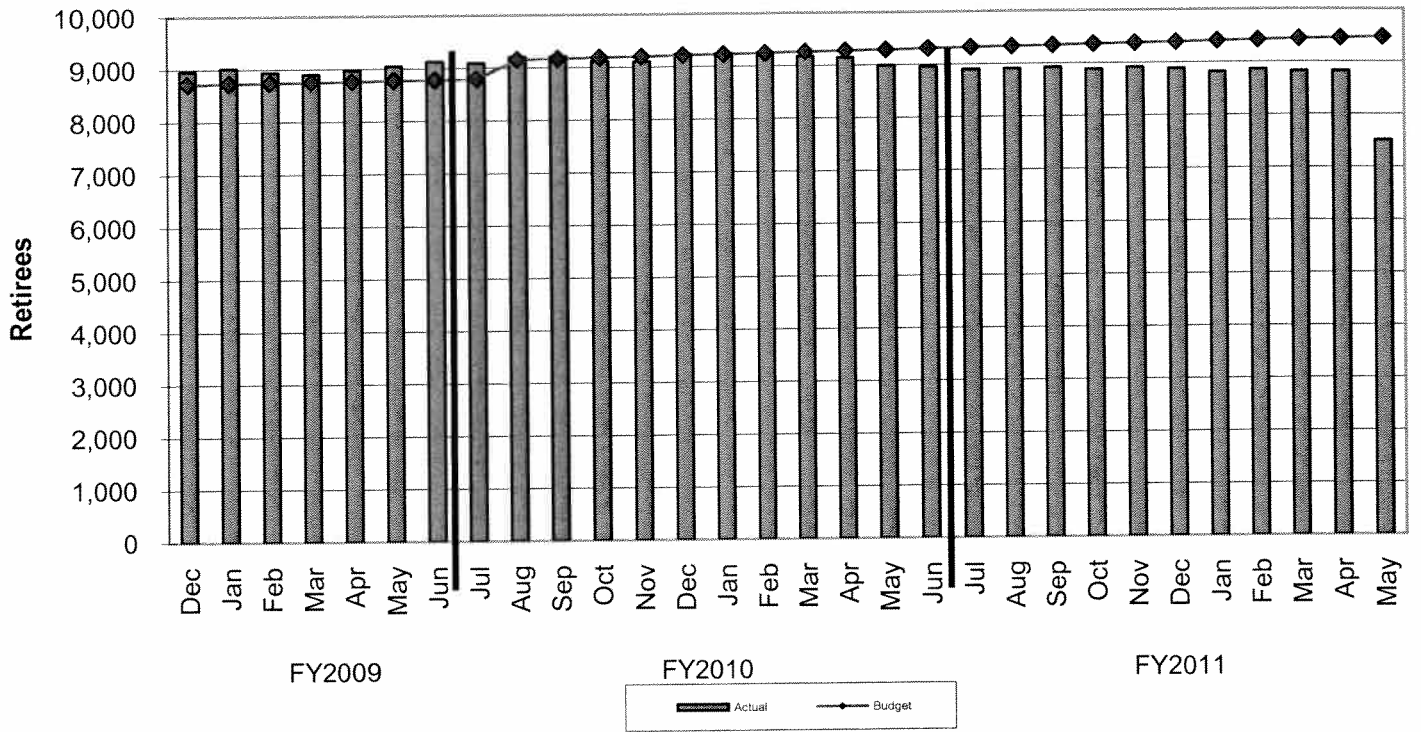


# TREND INDICATORS - HOUSTON EMERGENCY CENTER



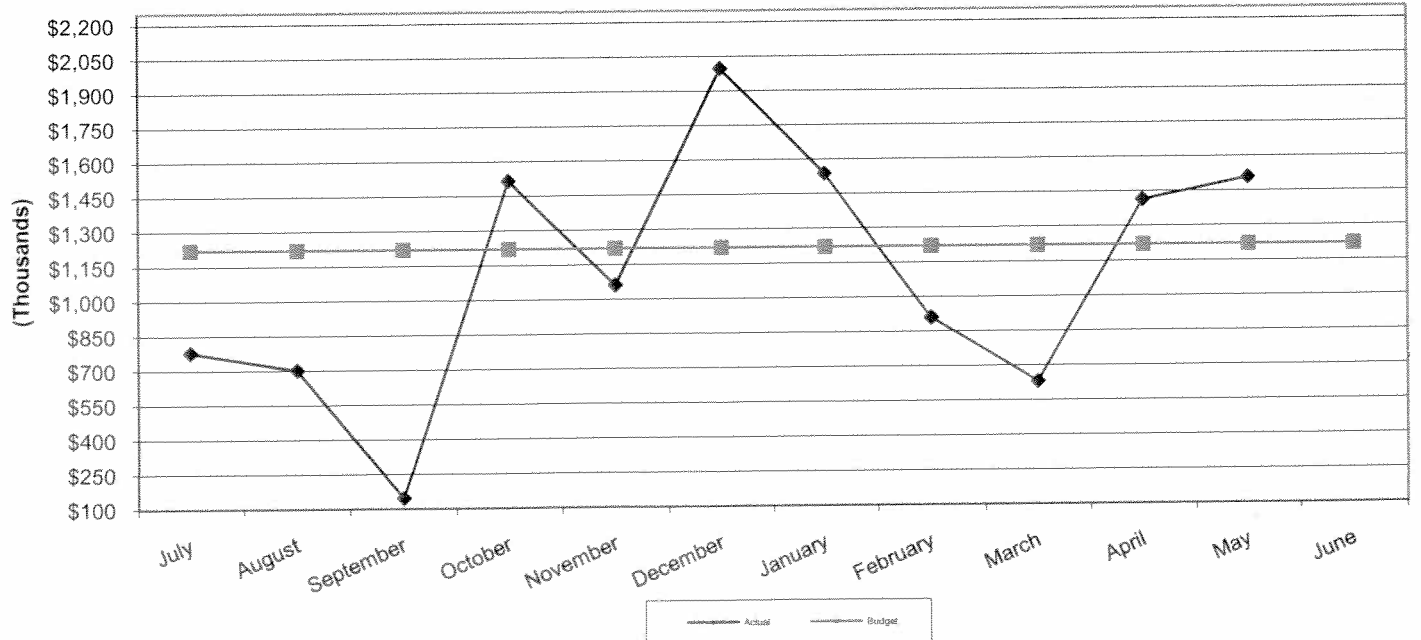
## TREND INDICATORS - RETIREMENTS

### Retirees Receiving Health Benefits



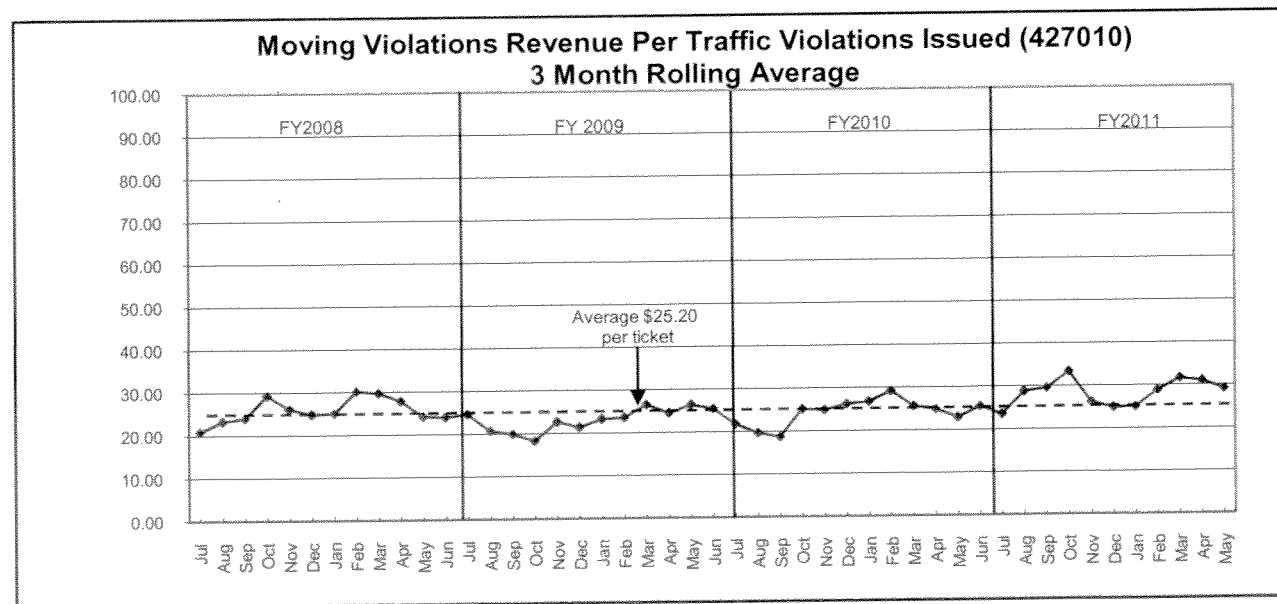
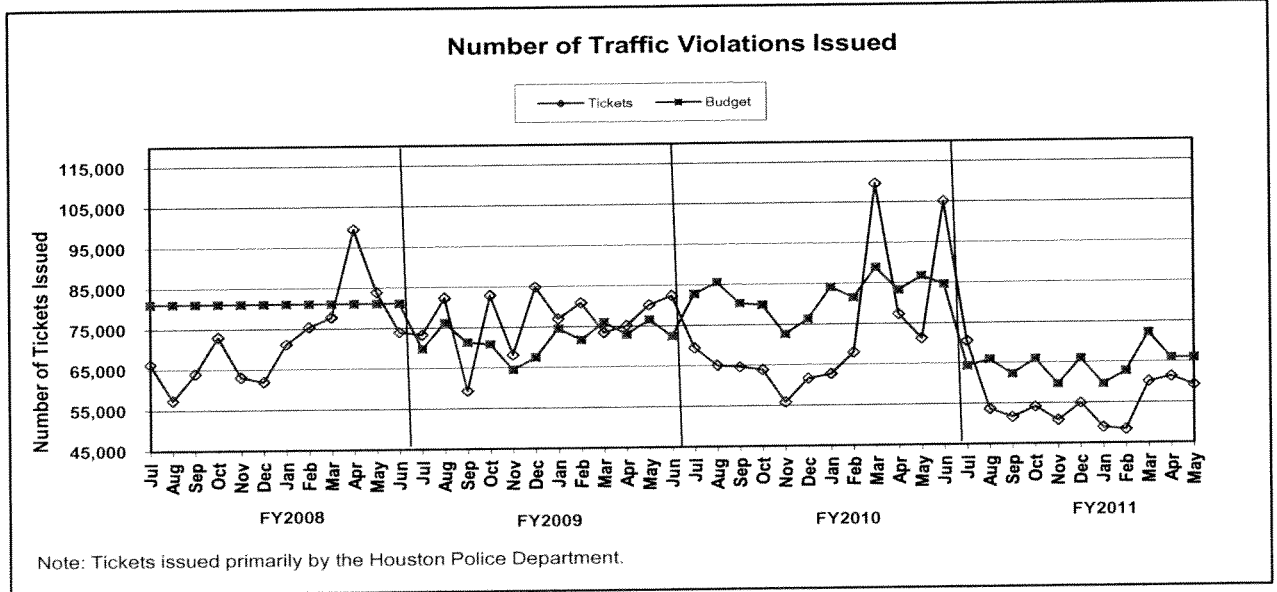
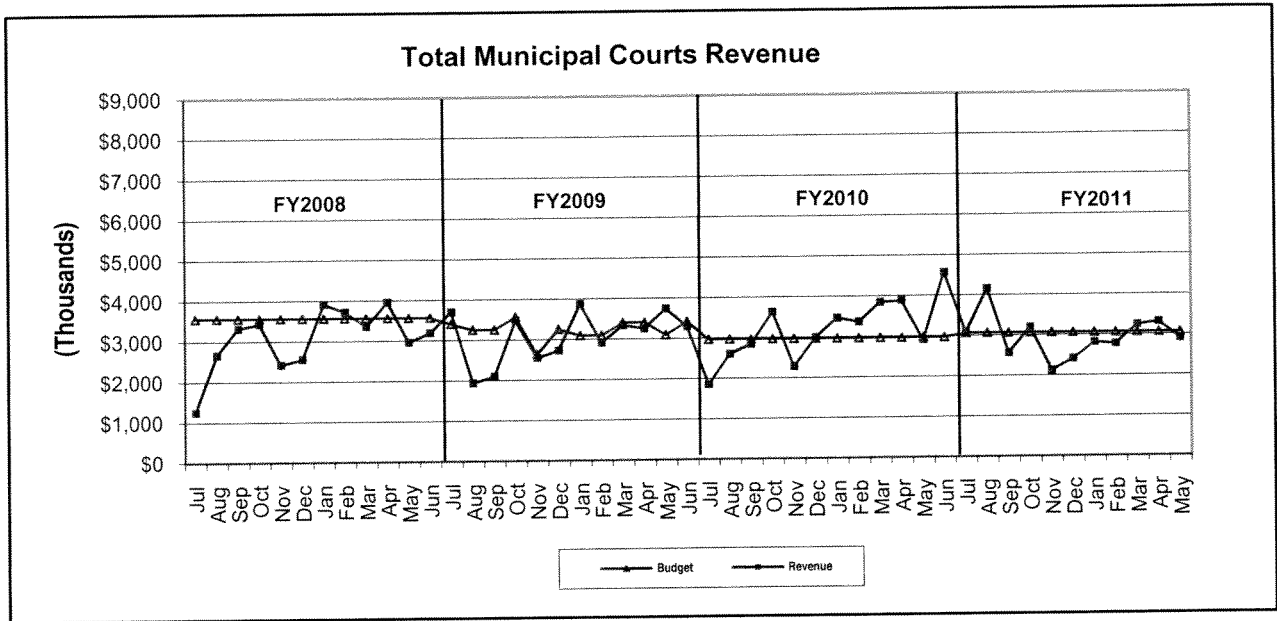
## TREND INDICATORS - PARKING MANAGEMENT

### Total Parking Management Revenue

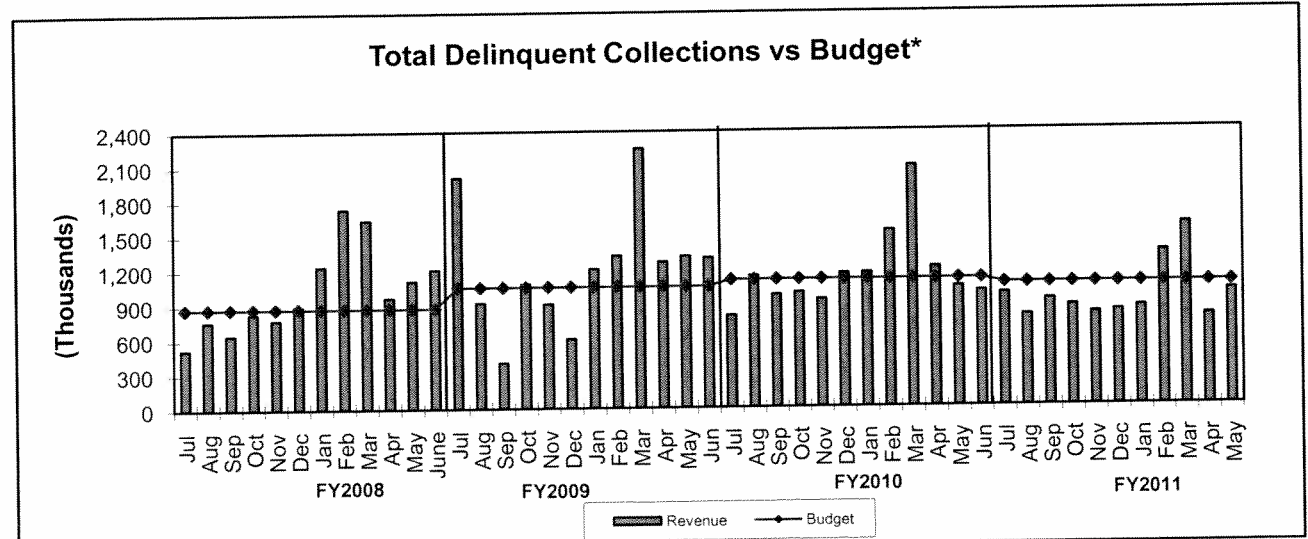
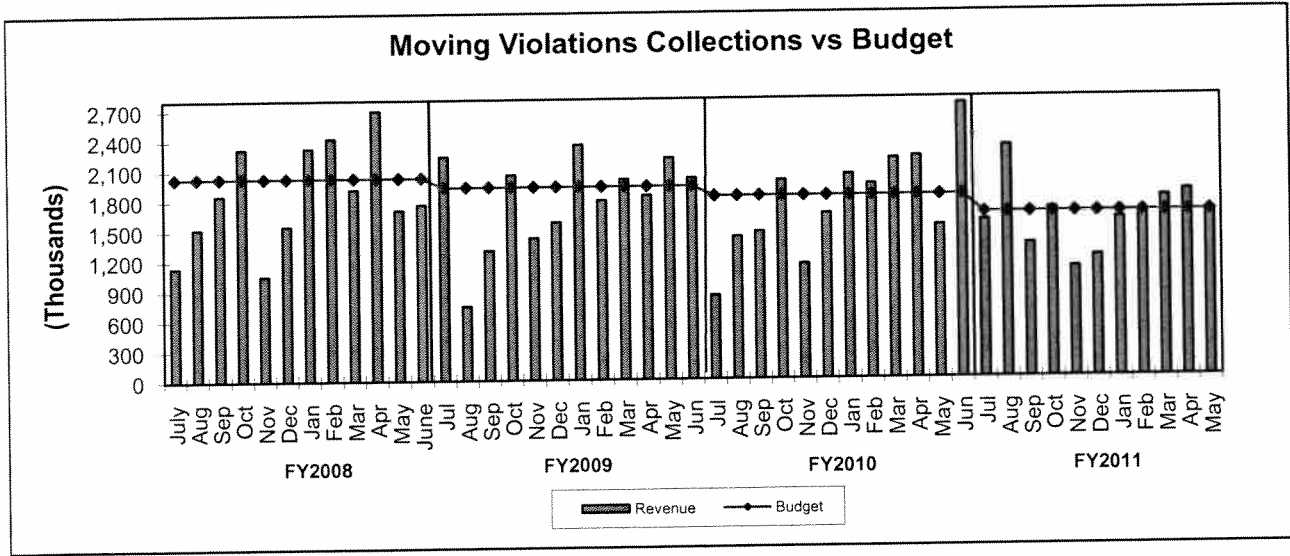


NOTE: Prior Year Revenue of \$1.2M resulting from Enterprise Fund conversion is not reflected.

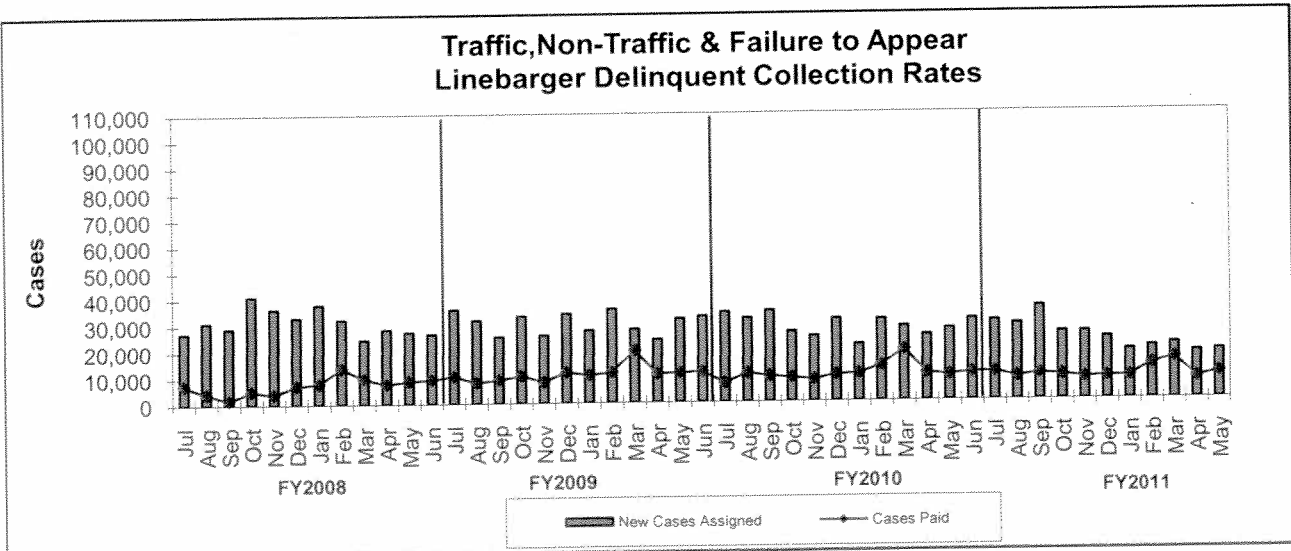
# TREND INDICATORS - MUNICIPAL COURTS



# TREND INDICATORS - MUNICIPAL COURTS



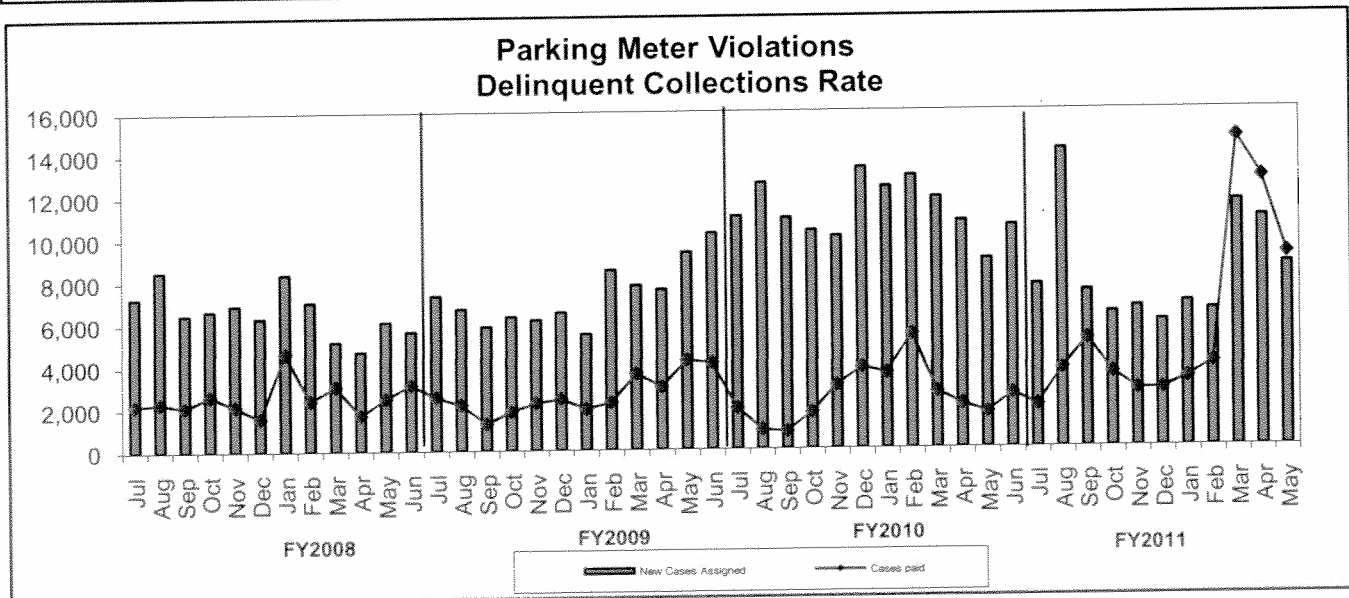
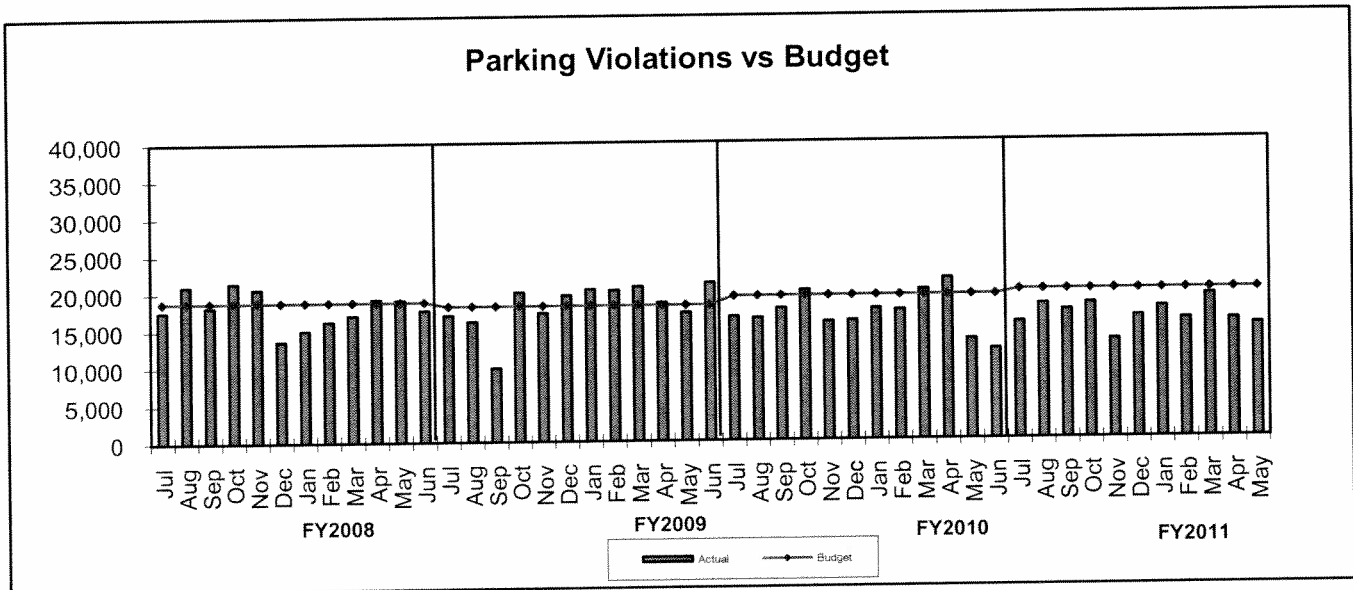
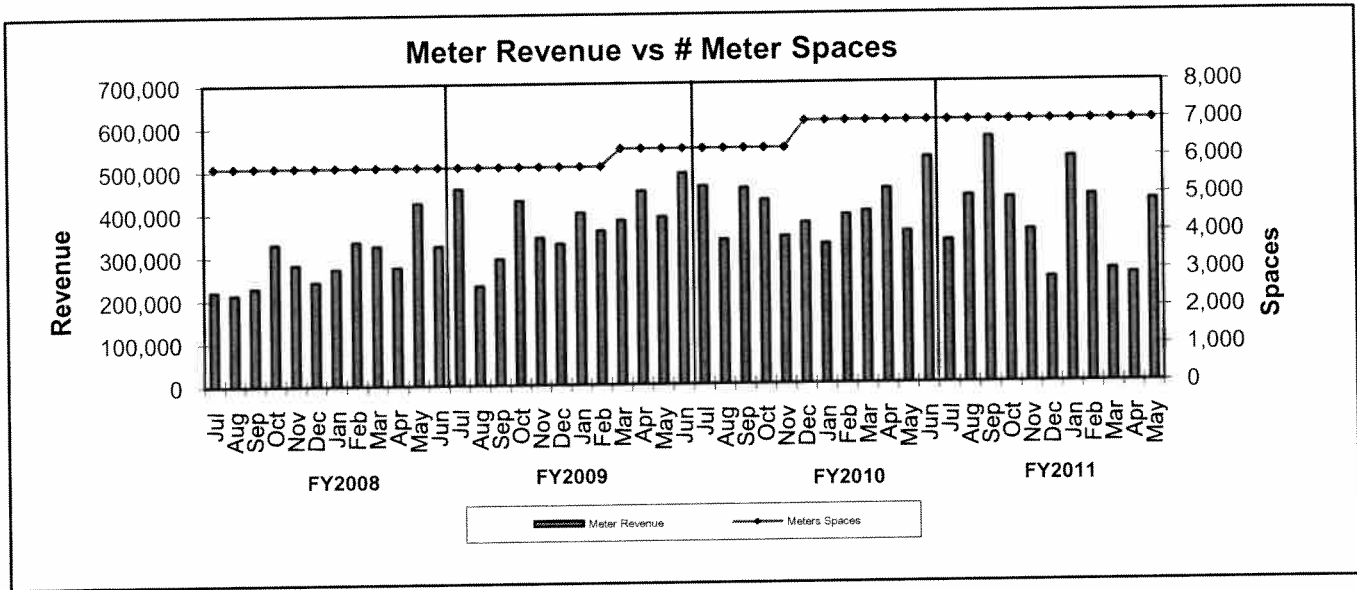
\*Net of fees and expenses paid to Linebarger



\*Excludes Delinquent Parking Collections

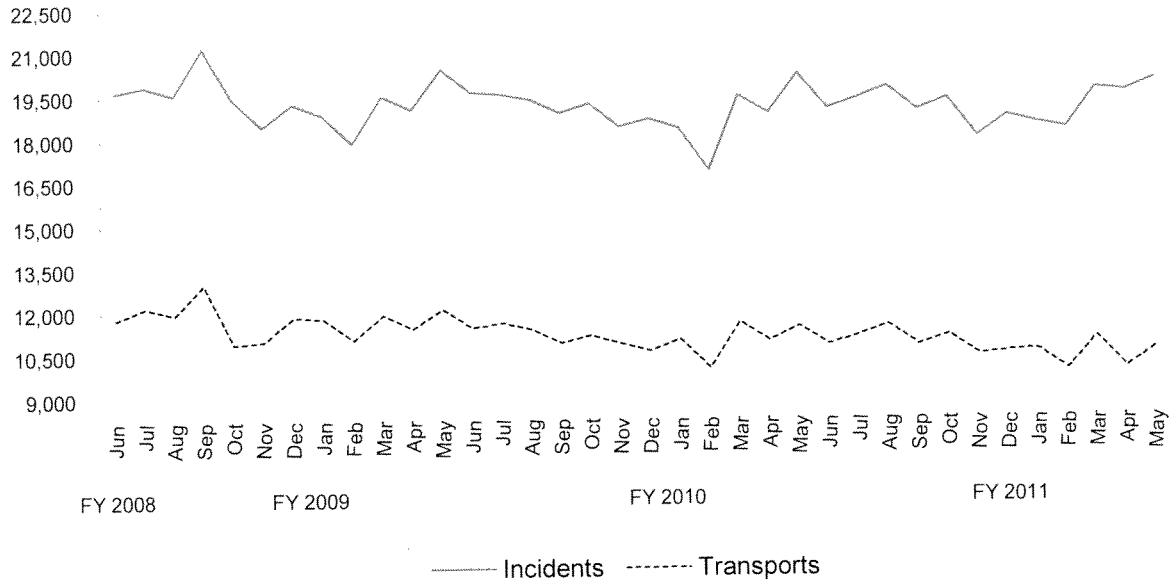


# TREND INDICATORS - ADMINISTRATION AND REGULATORY AFFAIRS

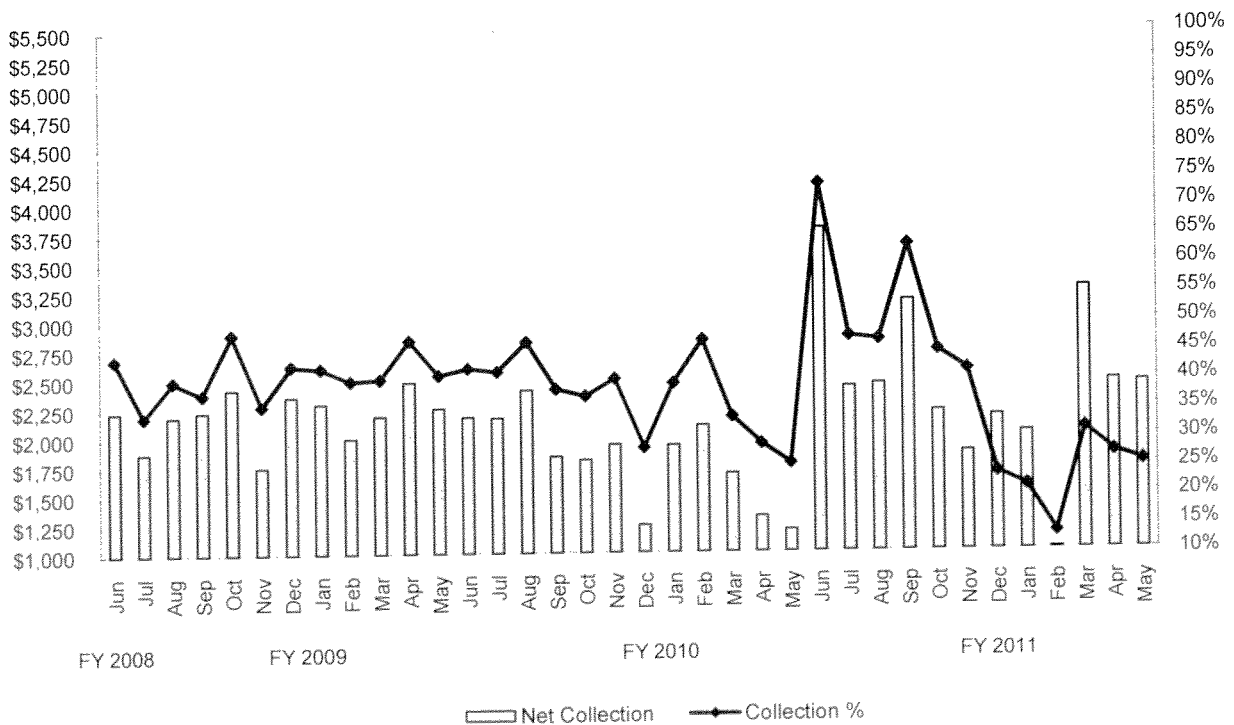


# TREND INDICATORS - AMBULANCE SERVICES

## EMS Incidents and Transports



## EMS Net Collections & Collection Percentage

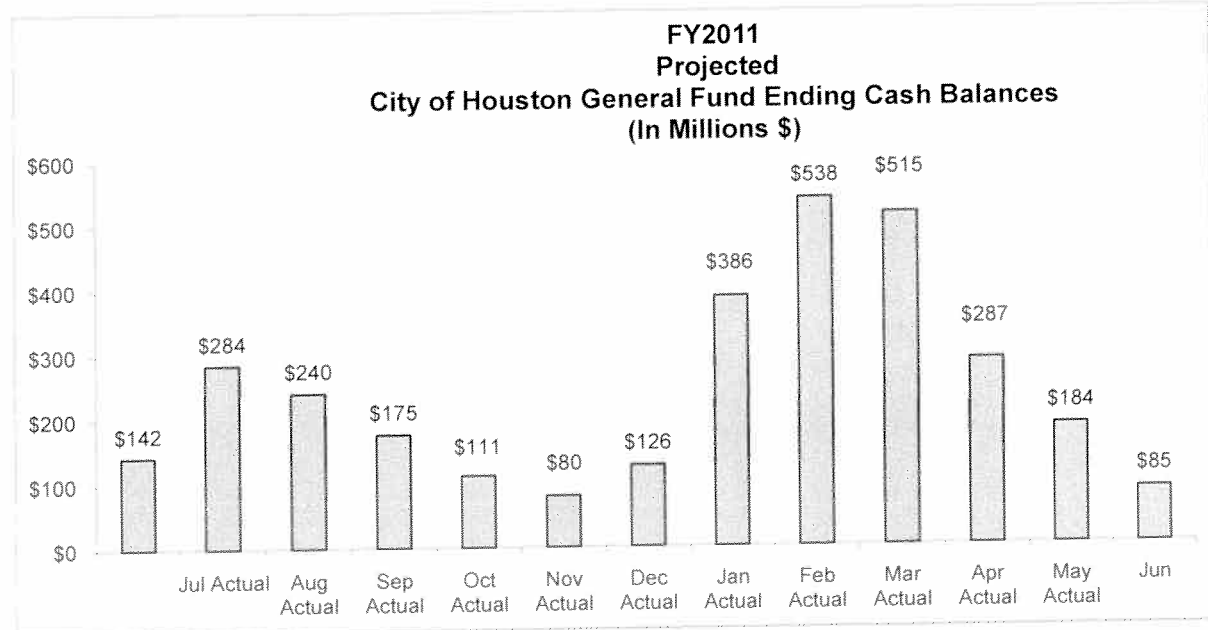
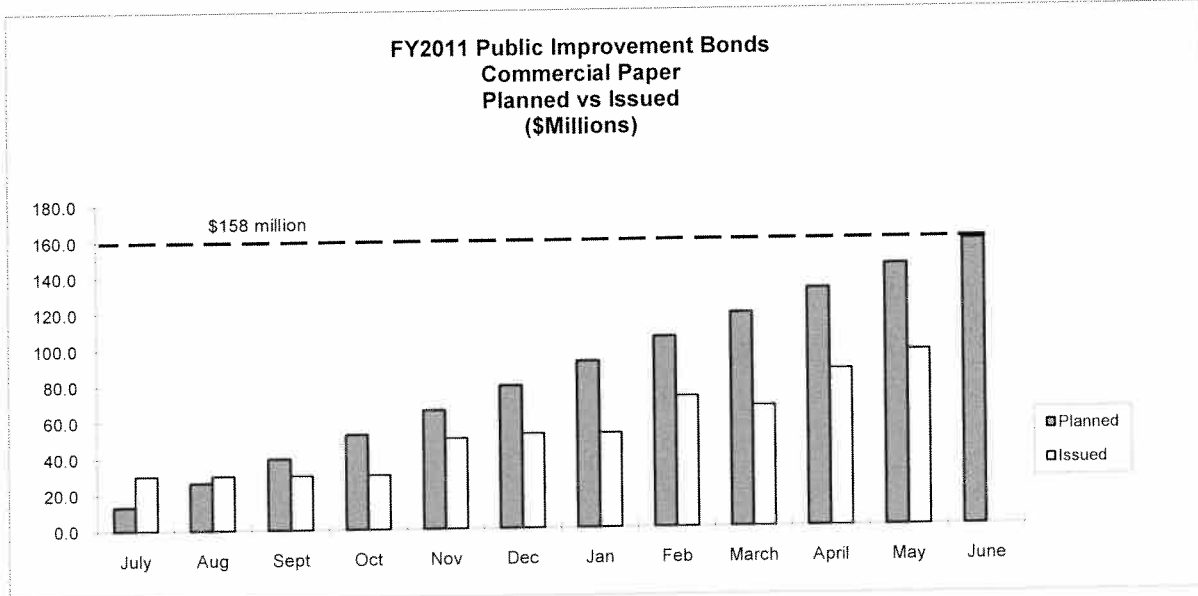
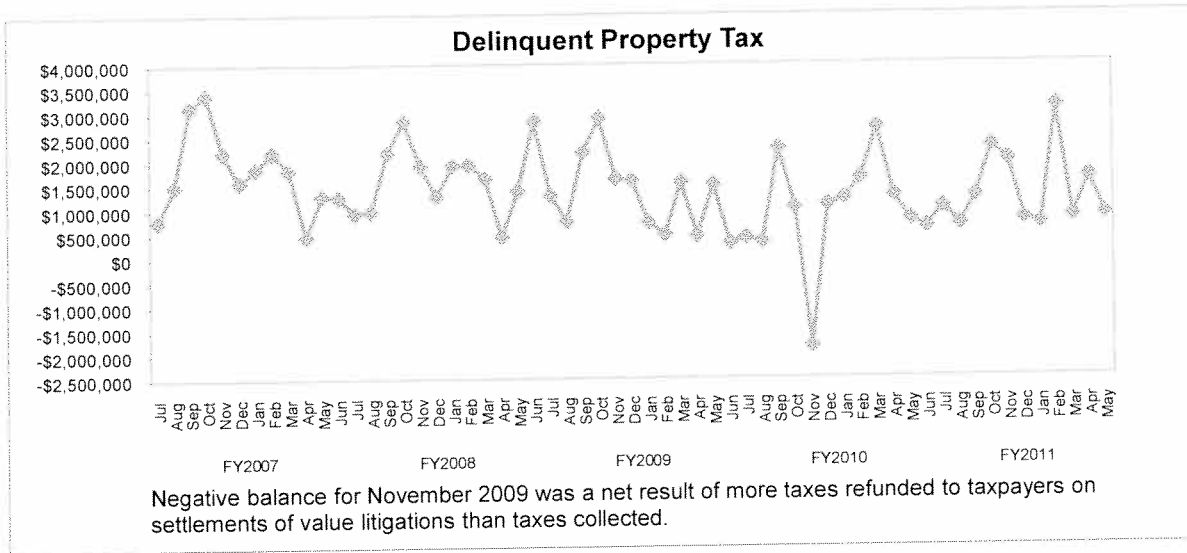


\*The decline in collection in March-May 2010 results from delays in reimbursement from Medicare. The Medicare holdbacks of \$2.421M were received 7/2/10 and accrued back to FY10.

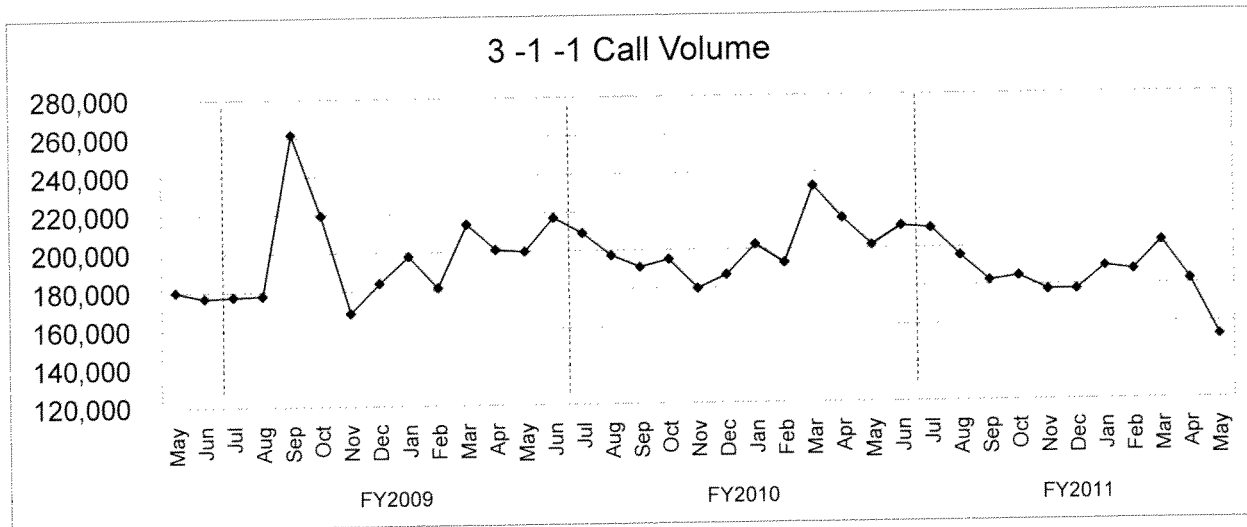
\*\*EMS rates incr. from \$415 to \$1,000 on 12/1/10. Collections are for service prior to Dec. 1st thus significant decr. in collection ratio.

\*\*\*Decline in Jan '11 & Feb '11 collections due to a delay in the processing of claims by Medicare. (fractional mileage change)

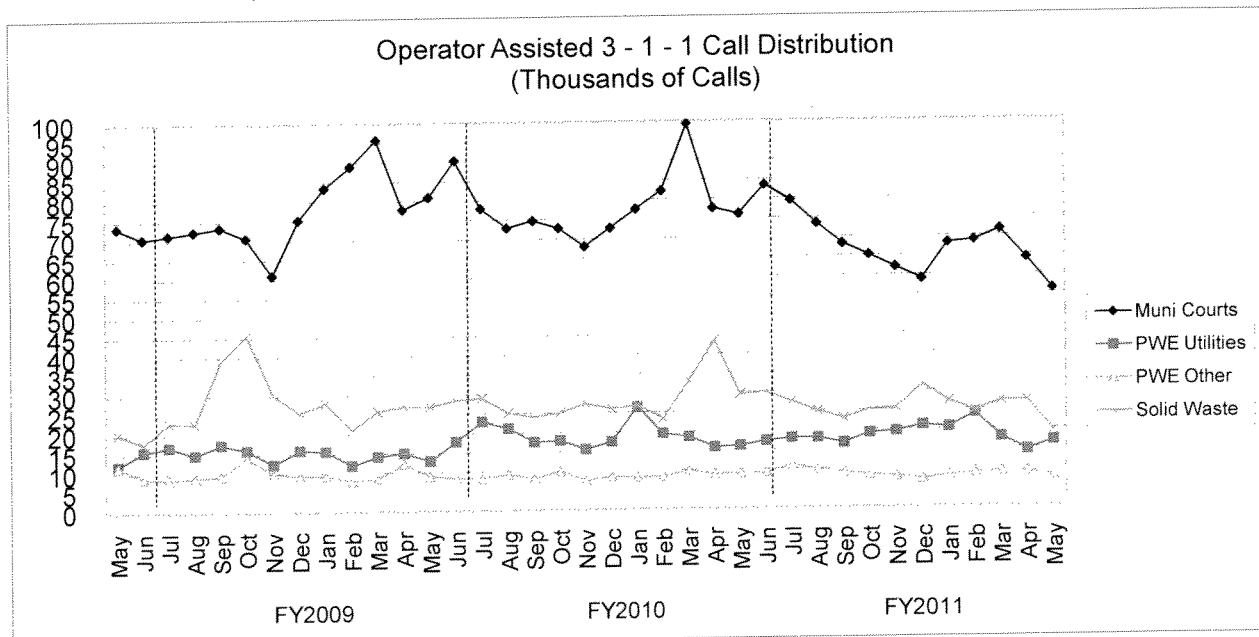
## TREND INDICATORS - MISCELLANEOUS



TREND INDICATORS - MISCELLANEOUS



3-1-1 became fully operational in August 2001



4 largest users of operator assisted 3-1-1 calls.