

2025 Winter Weather After-Action Report

Chris Newport
Chief of Staff
Mayor John Whitmire



Photo Source:
Houston Landing



Contents

- Overview of Incidents
- Preparations & Planning
- Strengths & Partnerships
- Priority Recommendations & Improvements
- Next Steps

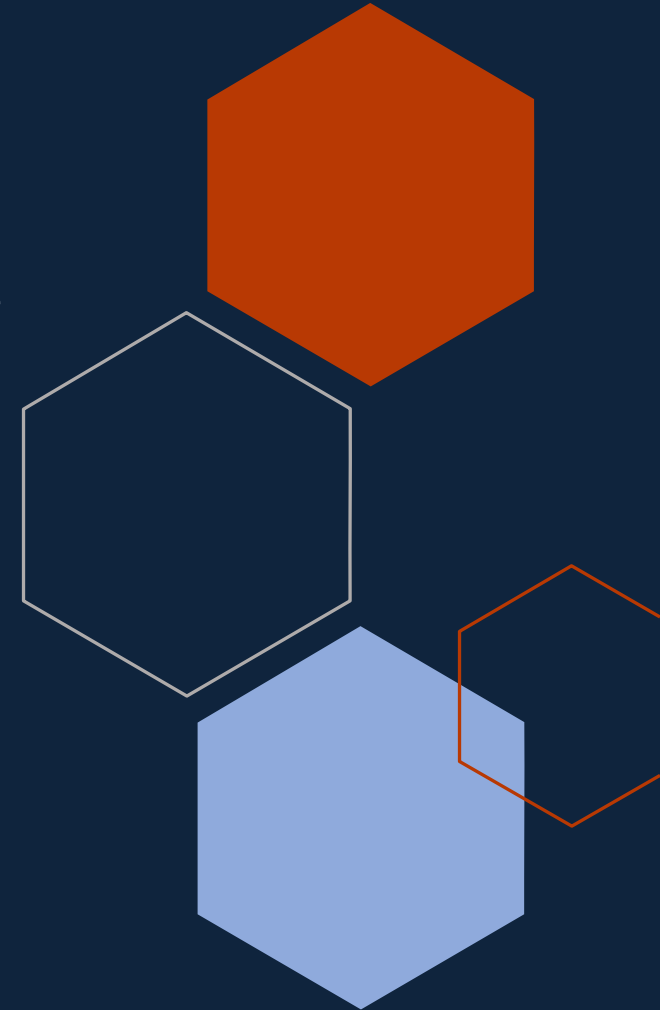


A Tale of Two Freezes

January 19-24, 2025		February 19-21, 2025	
Below Freezing Temperatures	6 days Low of 20°F Windchills in teens January 22	Below Freezing Temperatures	3 days Low of 27°F Windchills in teens February 20
Precipitation	1 to 4 inches of snow in COH	Precipitation	No wintry precipitation
Warming Centers Opened	10 HPARD and HHD Facilities	Warming Centers Opened	12 HPARD and HHD Facilities
Max Warming Center Census	~ 1,300	Max Warming Center Census	874
Transportation Impacts	Airports, roadways, METRO significantly impacted	Transportation Impacts	No transportation impacts
Cost		Cost	
General Fund:	\$6.1 million	General Fund:	TBD
Total:	\$6.5 million	Total:	TBD

Preparations & Planning

- Seasonal preparations began in October 2024
- Daily situation briefs and calls several days before the onset of winter weather conditions
- City Departments readied staff and resources to support winter weather operations
 - Warming centers
 - Roadways, infrastructure, airports
 - Critical facilities
 - Implementation of Continuity Plans (January)



Strengths

- Warming center staff compassion and innovation
- Adaptation of plans and procedures to suit the needs of each incident
- Coordinated redirection of residents when warming centers were full
- Alignment with Harris County on messaging and center opening (Bayland and Lincoln Community Centers)
- Clear public information on expected conditions and alerts to the most vulnerable residents



Partnerships

- METRO
- The Harris Center
- The Beacon
- Salvation Army
- American Red Cross
- Outreach in the Barrio
- Houston Food Bank
- Coalition for the Homeless



Warming Center Operational Challenges

Significant impact on daily services when Health and Parks facilities are used as warming centers

- Access to other services are limited (e.g., senior food distribution, STD clinics)
- City personnel reassigned for the duration of operations



Warming Center Recommendations



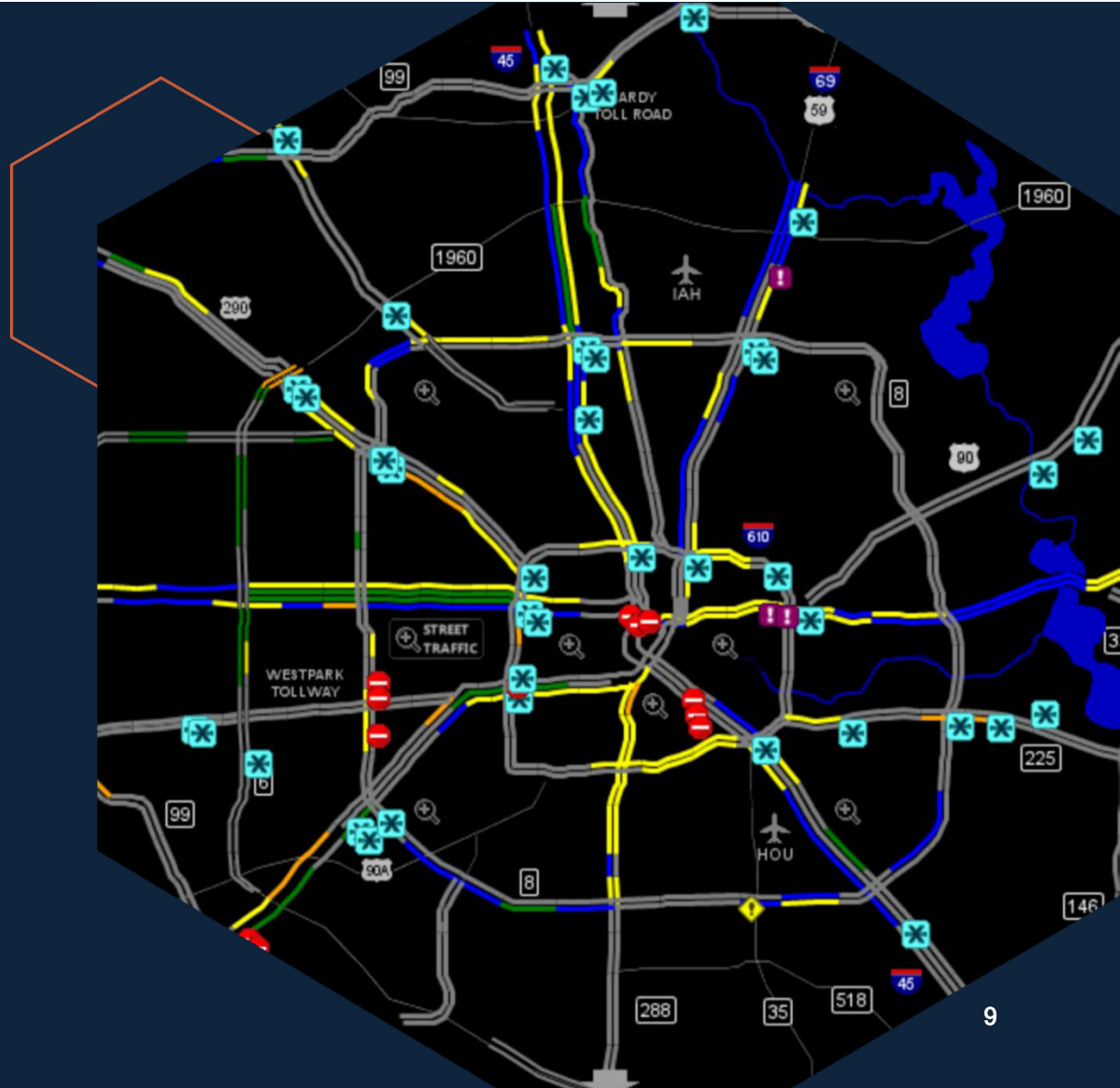
- Evaluate alternative (larger) facilities to consolidate warming center operations.
- Review existing agreements; formalize new agreements with partner agencies regarding services and support in emergency situations.
- Engage a broader range of non-profit and non-governmental organizations in the update of mass care-related plans.
- Document the security and mental health service provision (from the February operation) in warming center plans and procedures.
- Include warming center food provision and donation considerations in future planning discussions.



OEM
Office of Emergency Management

Additional Recommendations

- Support warming center staff with appropriate training and support resources (e.g., Mental Health First Aid)
- Continue to identify generator funding for critical facilities
- Identify alternative care options for individuals with medical needs
- Clarify guidelines for the use of the State of Texas Emergency Assistance Registry



State of Texas Emergency Assistance Registry (STEAR)



- Chapter 418 of the Texas Government Code requires local governments to conduct wellness checks for “medically fragile” individuals in the registry in certain emergencies:
 - Extended power, water, or gas outages lasting more than 24 consecutive hours;
 - Declared state of disaster by the governor; or
 - Any other event considered necessary by the Texas Division of Emergency Management, Texas Department of State Health Services, or Texas Department of Health and Human Services.
- OEM and Legal are working to establish clear guidelines around the use of STEAR data in incident response.



OEM
Office of Emergency Management

Next Steps

- City Departments are working to finalize the Improvement plan
- Draft AAR circulated to departments by March 7, 2025
- Quarterly accountability meetings to monitor progress





Thank you

Chris Newport
Chief of Staff
Mayor John Whitmire



OEM
Office of Emergency Management

City of Houston Overnight Warming Centers

NAME	ADDRESS
ACRES HOMES MSC	6719 W. Montgomery Rd, Houston 77091
DENVER HARBOR MSC	6402 Market St, Houston 77007
Fonde CC	110 Sabine St, Houston, TX 77007
KASHMFRF MSC	4802 Lockwood Dr, Houston 77026
MAGNOLIA MSC	7037 Capitol St, Houston 77011
Metropolitan MSC	1475 W Gray St, Houston, TX 77019
Moody CC	3725 Fulton St, Houston, TX 77009
NORTHEAST MSC	9720 Spaulding St, Houston 77016
SOUTHWEST MSC	6400 High Star Dr, Houston 77074
SUNNYSIDE MSC	4410 Reed Road, Houston 77051

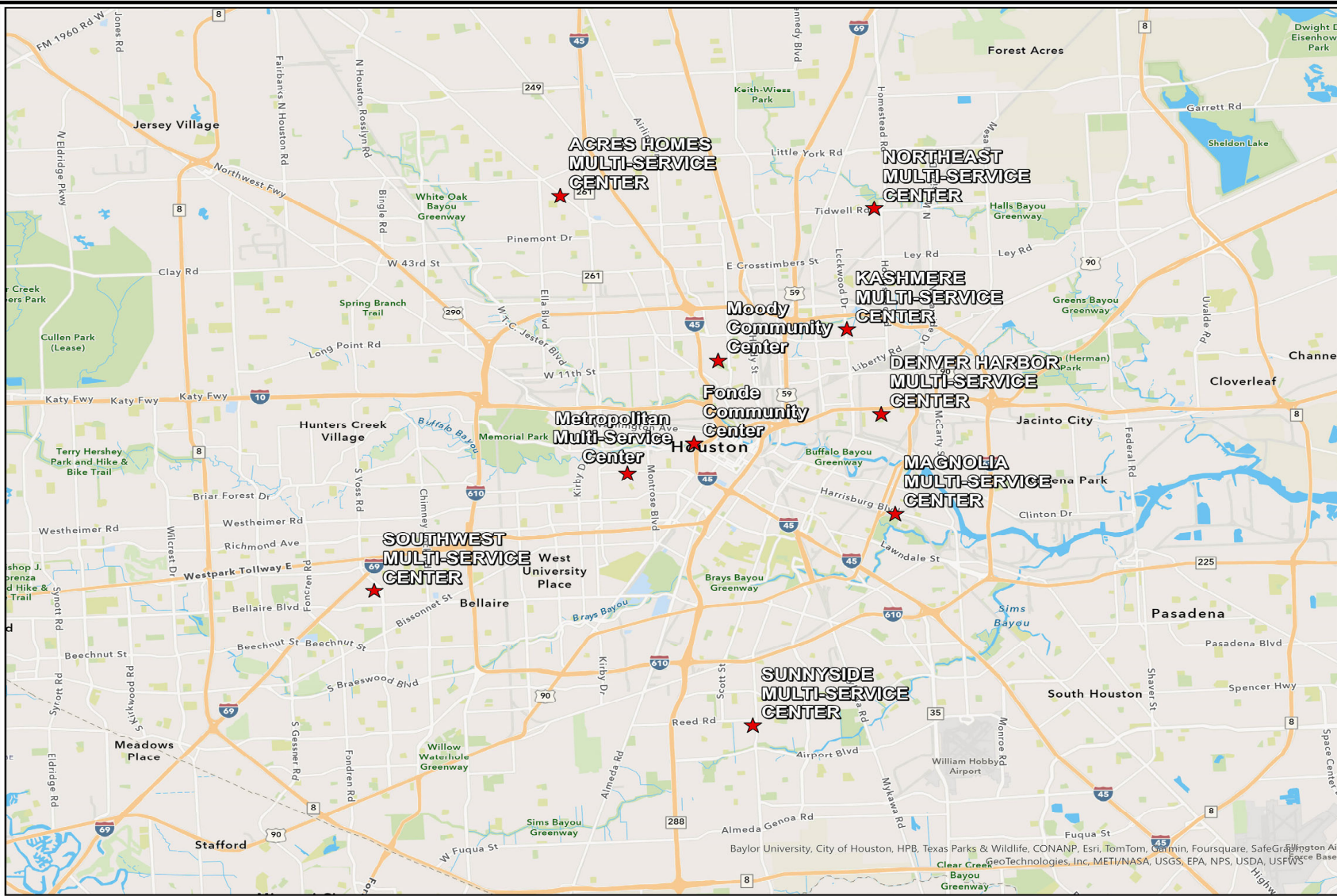
Legend

★ Overnight Warming Centers



0 4.25 Miles

This map is made available for reference purposes only and should not be substituted for a survey product. The City of Houston will not accept liability of any kind in conjunction with its use.



Map data: Clear Creek Bayou Greenway, GeoTechnologies, Inc., METI/NASA, USGS, EPA, NPS, USDA, USFWS, Baylor University, City of Houston, HPB, Texas Parks & Wildlife, CONANP, Esri, TomTom, Garmin, Foursquare, SafeGraph, Houston Air Force Base

City of Houston Overnight Warming Centers

NAME	ADDRESS
ACRES HOMES MSC	6719 W. Montgomery Rd. 77091
DENVER HARBOR MSC	6402 Market St. 77007
FIFTH WARD MSC	4014 Market St. 77007
FONDE CC	110 Sabine St, Houston, TX 77007
KASHMERE MSC	4802 Lockwood Dr. 77026
MAGNOLIA MSC	7037 Capitol St. 77011
METROPOLITAN MSC	1475 W Gray St, Houston, TX 77019
MOODY CC	3725 Fulton St, Houston, TX 77009
NORTHEAST MSC	9720 Spaulding St. 77016
SOUTHWEST MSC	6400 High Star Dr. 77074
SUNNYSIDE MSC	4410 Reed Road, 77051
THIRD WARD MSC	3611 Ennis St. 77004

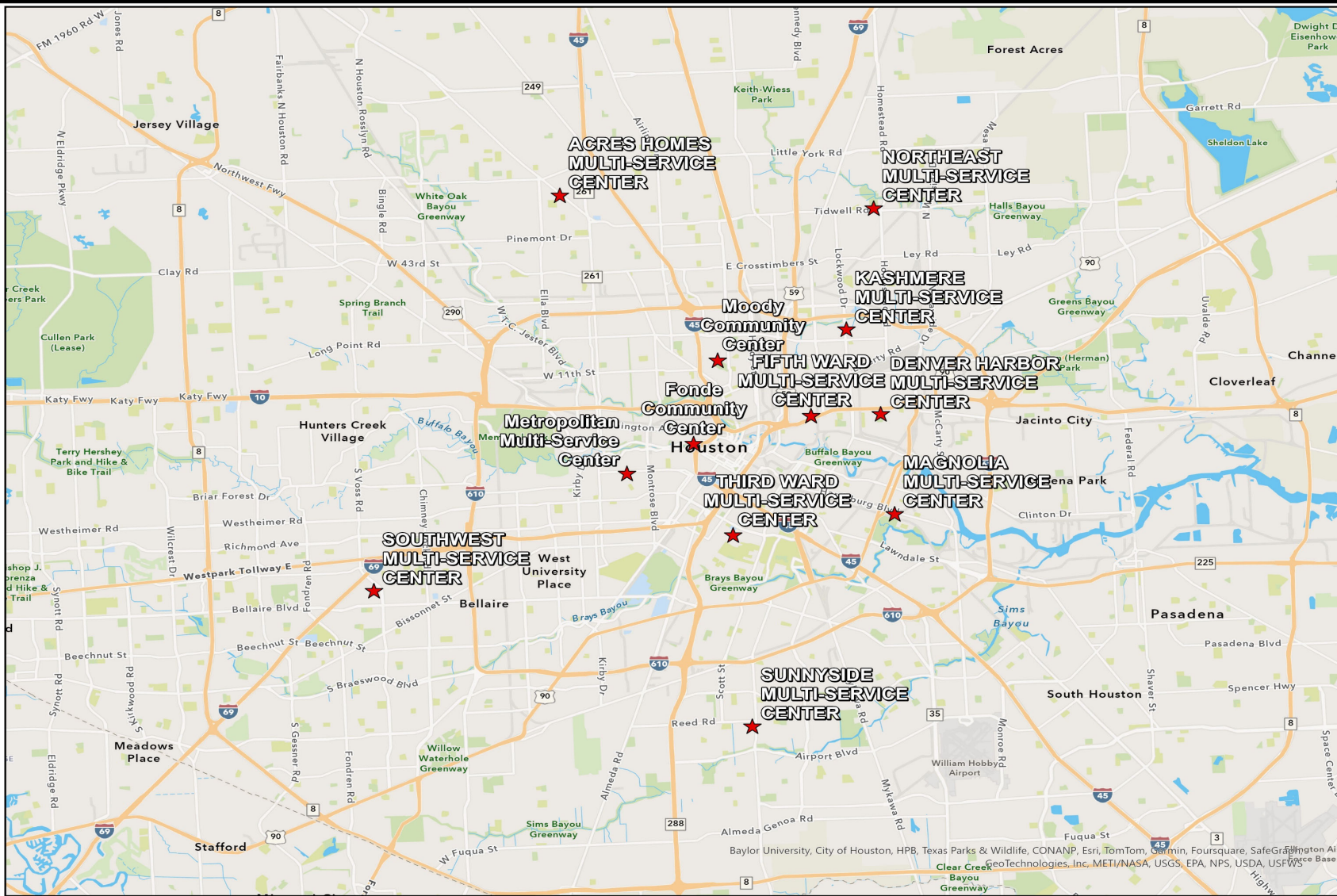
Legend

★ Overnight Warming Centers



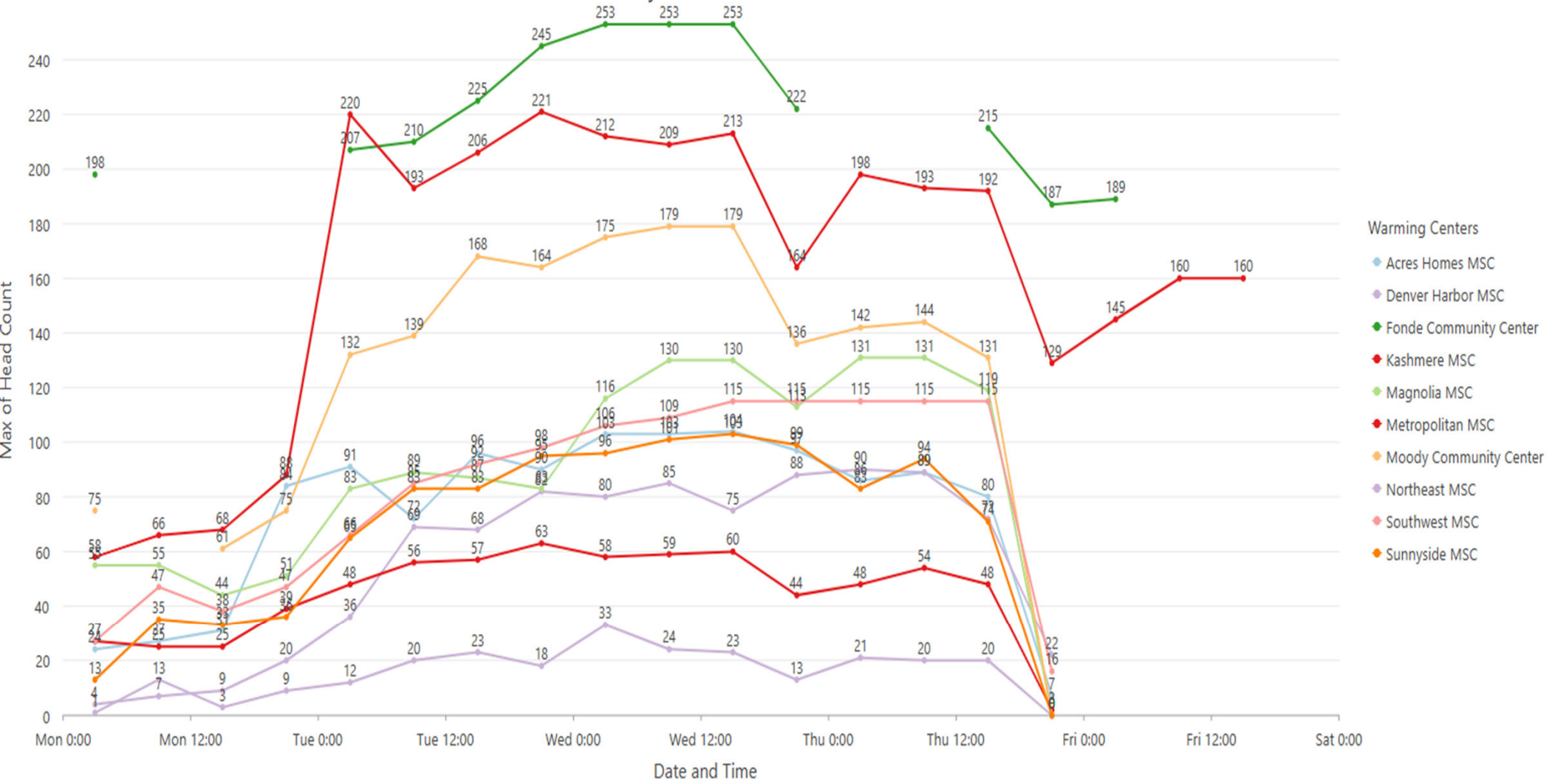
0 4.25 Miles

This map is made available for reference purposes only and should not be substituted for a survey product. The City of Houston will not accept liability of any kind in conjunction with its use.



Map data provided by Esri, DeLorme, Garmin, Foursquare, SafeGraph, and other sources. © 2023 Esri, Clear Creek Bayou Greenway, GeoTechnologies, Inc., METI/NASA, USGS, EPA, NPS, USDA, USFWS.

January 2025 Freeze Head Count Chart



This chart shows the occupancy trends of the warming centers during the January 2025 freeze.

COH Warming Centers Capacity

Total Number
1055
/ 1500

Fonde CC



Acres Homes MSC



1/21/2025, 8:23 AM

Metropolitan MSC



1/21/2025, 8:07 AM

Denver Harbor MSC



1/21/2025, 6:59 AM

311 Freeze Calls

555

Metro Rides

14

ZTrips

358

Moody CC



1/21/2025, 8:06 AM

Northeast MSC



1/21/2025, 8:00 AM

Southwest MSC



1/21/2025, 8:01 AM

Kashmere MSC



1/21/2025, 8:00 AM

Magnolia MSC



1/21/2025, 7:59 AM

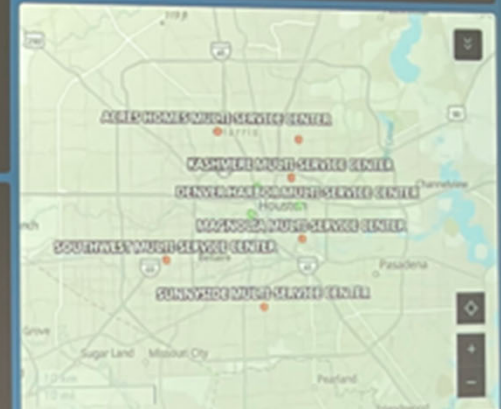
Sunnyside MSC



1/21/2025, 8:08 AM

Select a date
No date selected

Location
No category selected



Map, Table, Serial chart