

# Municipal Setting Designations



Ann Marie Stone Sheridan, P.E.  
Supervising Engineer

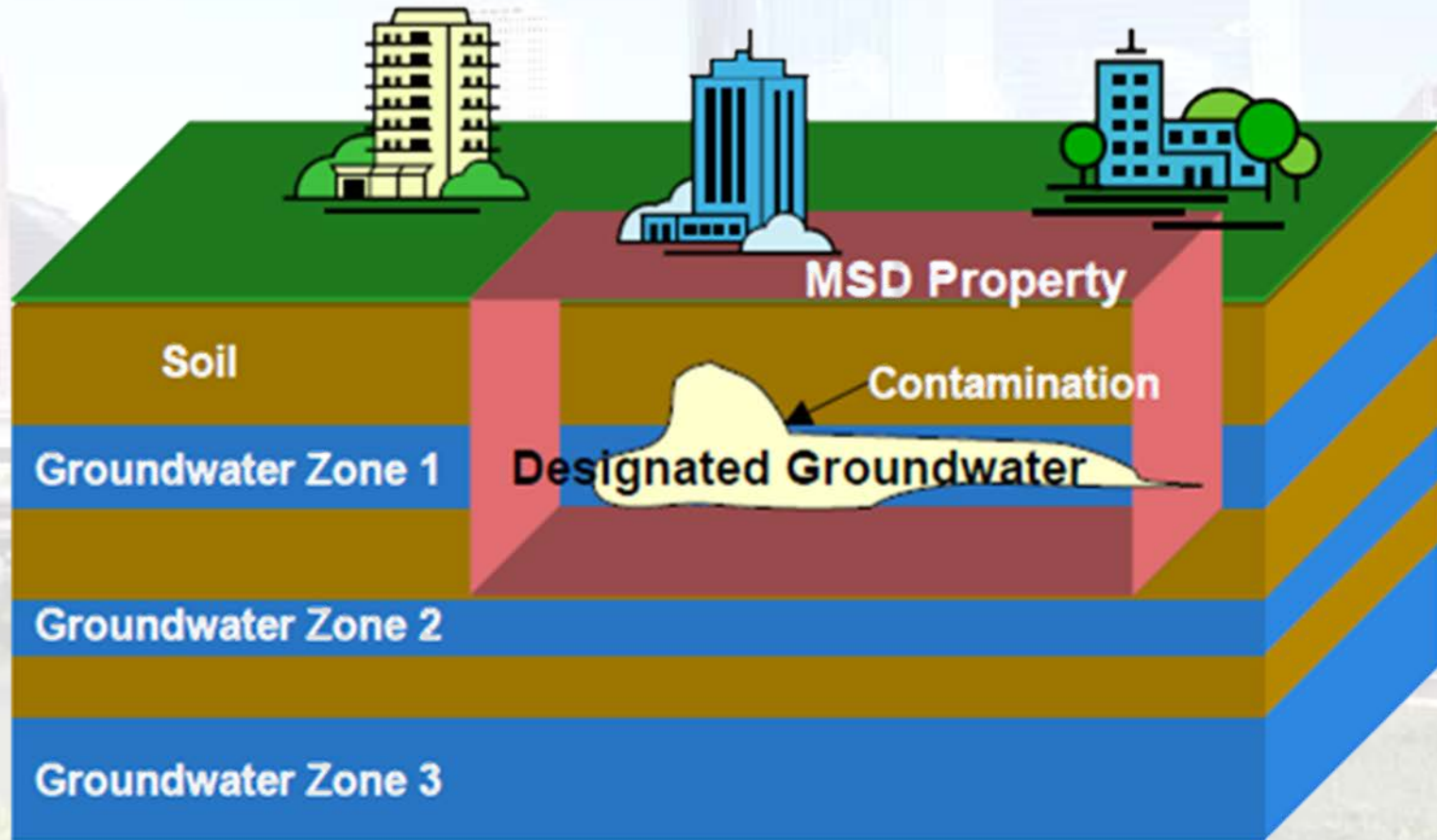


# What is an MSD?

- A **voluntary** deed restriction that prohibits the use of impaired groundwater as potable water
  - A tool property owners can use to address environmental impairments to groundwater
  - Allows reinvestment and redevelopment of impaired properties
- A public health protection



# MSD Depiction



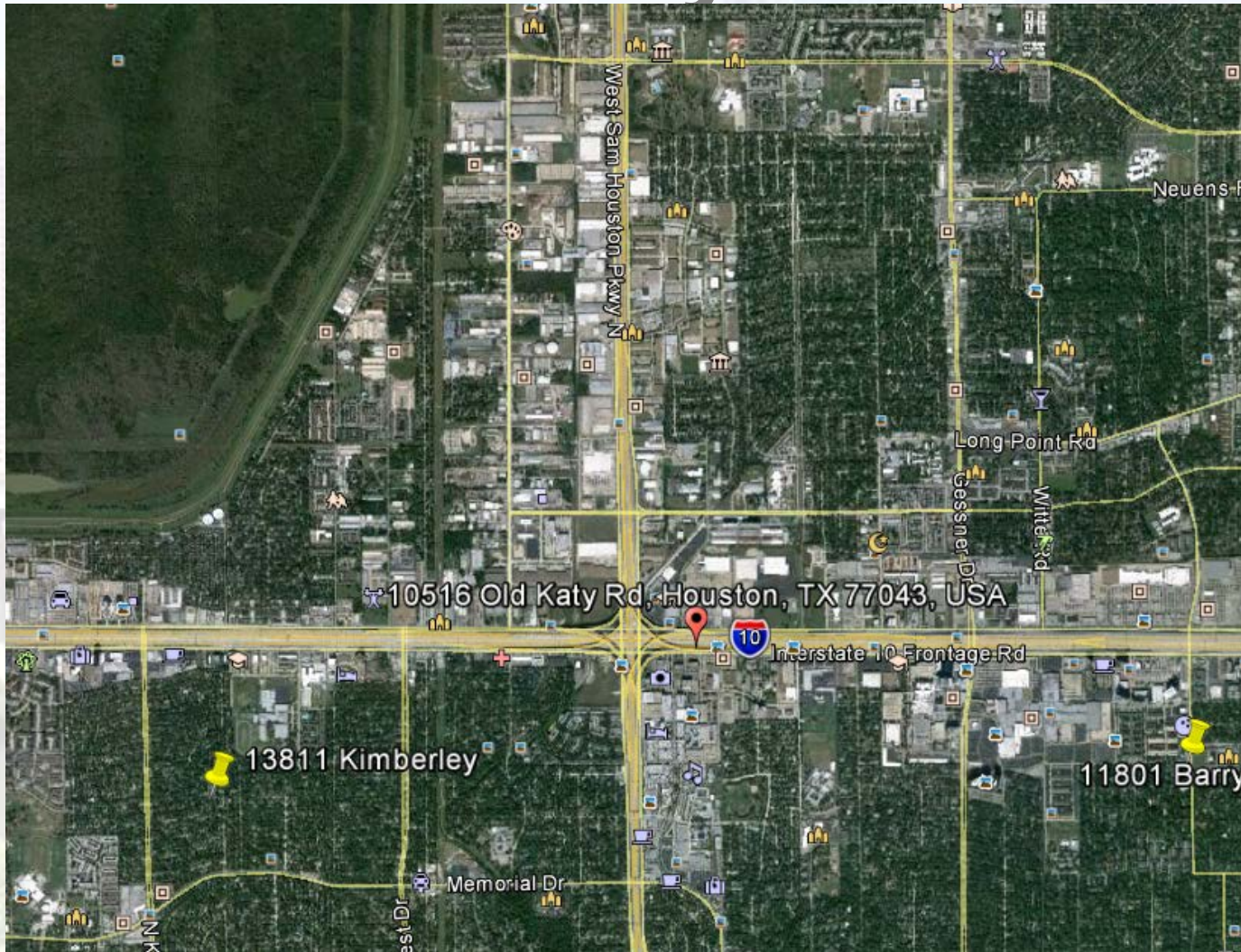


# What is an MSD?

- It is a State Program
  - Administered by the Texas Commission on Environmental Quality (TCEQ)
  - Requires Local Support
- Article 13 of Chapter 47
  - Public Hearing Required



# 10516 Old Katy Road





# Davis Holdings, LP

- Site History
  - Agricultural prior to development in 1956.
  - Used for manufacture of fluid control devices for oil and petroleum industries until 1984.
  - Warehouse and shipping operations 1984-1985.
  - Commercial center 1985 – Present.
- Anticipated use
  - Remain a commercial center.

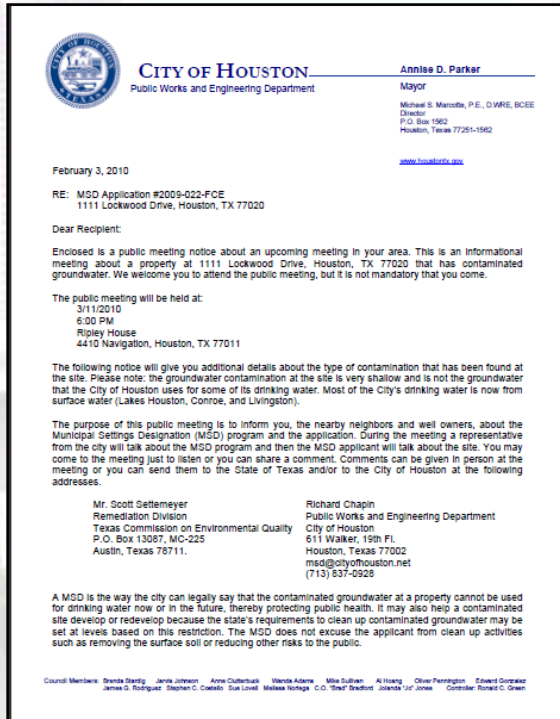


# Groundwater Impacts



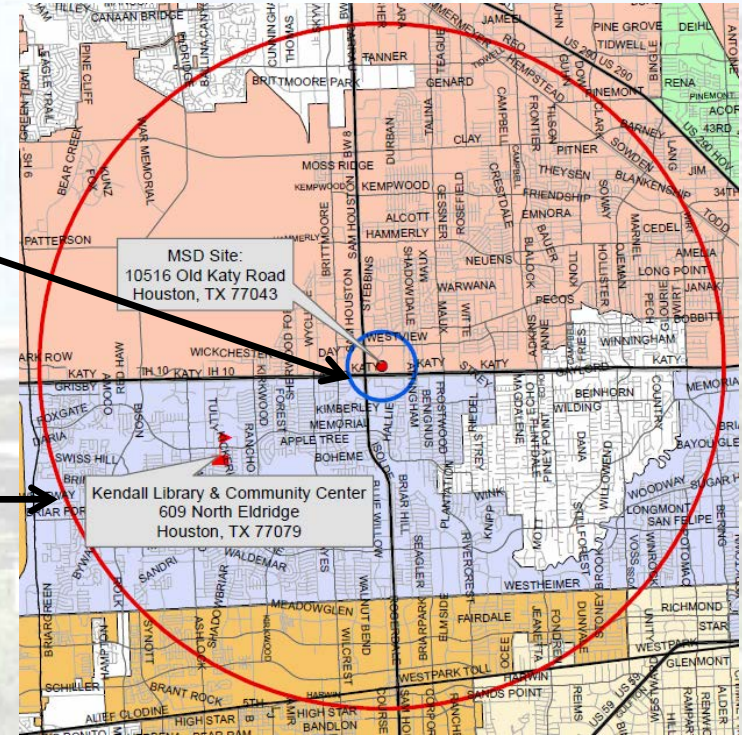


# MSD Notice Letters



Property Owners  
First-Class Mail  
½-Mile Radius  
*City Requirement*

Water Well Owners  
Certified Mail  
5-Mile Radius  
*State Requirement*



*If you received a notice through certified mail that means you have a water well according to the State's records*



**Municipal Setting Designations (MSDs)**



# Contact Information

**Ann Marie Stone Sheridan, P.E.**  
Supervising Engineer

**Public Works & Engineering**  
**City of Houston,**  
**1002 Washington, 3rd Floor**  
**Houston, Texas 77002**



**[msd@houstontx.gov](mailto:msd@houstontx.gov)**  
**(832) 394-9005**

