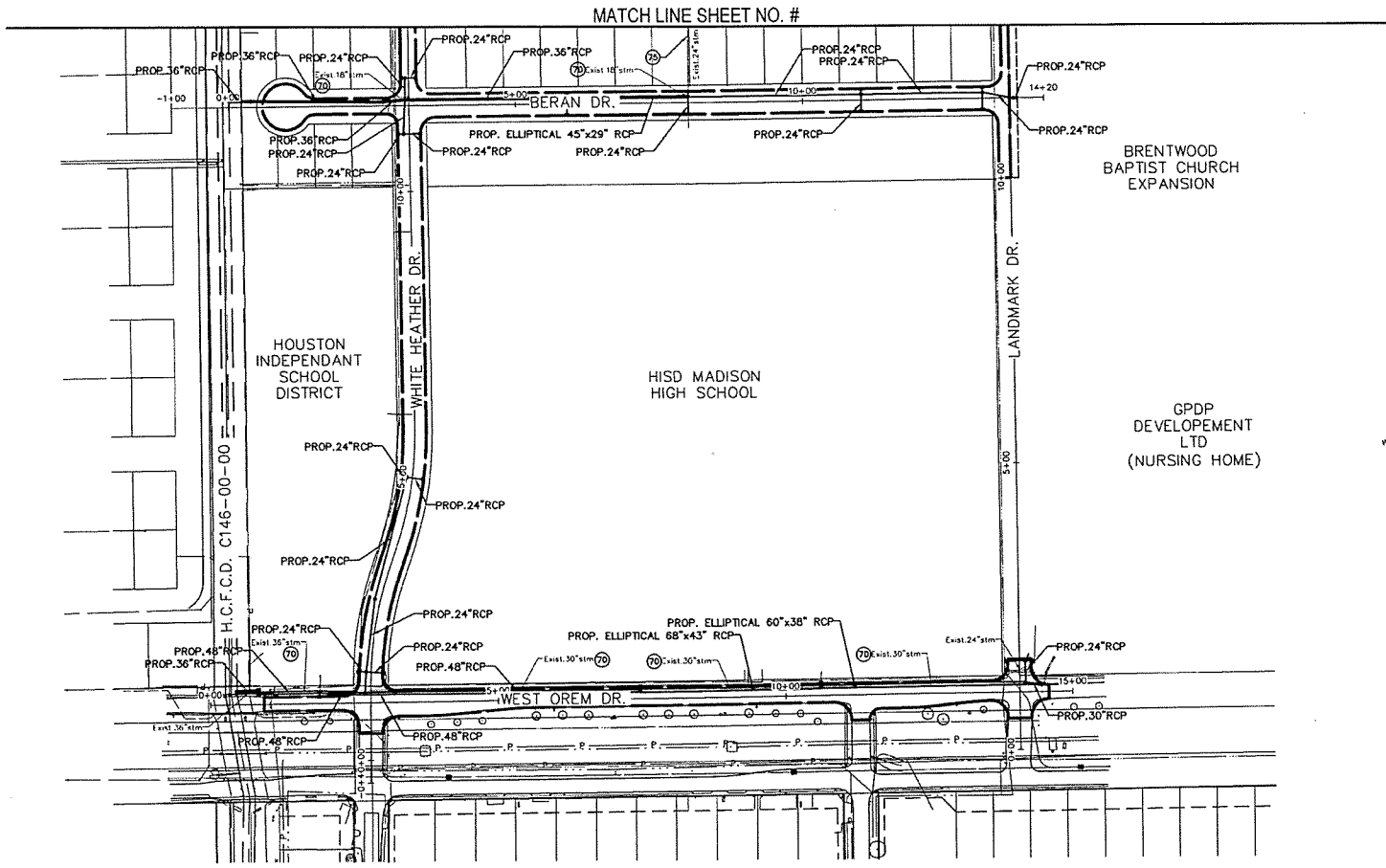


FOR REVISION PLANS
original made in inches

PLOTTED ON: Friday, February 03, 2017 1:18:29 PM
FILE NAME: F:\MIB-SEA\CD\Draw\White-SEA-OVERALL-PROJECT_LAYOUT.DWG



MATCH LINE SHEET NO. #

- LEGEND**
- PROP. STORM SEWER (24" DIA.)
 - == PROP. STORM SEWER (GREATER THAN 24" DIA.)
 - PROP. STORM SEWER MH
 - PROP. INLET CONNECTION
 - EXIST. STORM SEWER
 - EXIST. INLET CONNECTION
 - ⊖70 REMOVE EXISTING STORM SEWER
 - ⊖73 PLUG AND ABANDON EXISTING STORM SEWER MANHOLE
 - ⊖75 PLUG AND ABANDON EXISTING STORM SEWER
 - ⊖79 EXISTING STORM SEWER TO REMAIN



PRIVATE UTILITY LINES SHOWN
AT LEAST 48 HOURS BEFORE EXCAVATION IN STREET OR ON EASEMENTS. CALL THE LINE. STAR NOTIFICATION: 713-233-0567

Location: STREET LIGHTING FACILITIES	Date:
Location: STREET LIGHTING FACILITIES	Date:
Location: STREET LIGHTING FACILITIES	Date:
Location: STREET LIGHTING FACILITIES	Date:



SES HORIZON CONSULTING ENGINEERS, INC.
TEXAS REGISTERED ENGINEERING FIRM F-002922
DATE PREPARED: LANDTECH CONSULTANTS, INC. FE. NO. P-3602
THIS DOCUMENT IS FOR INTERIM REVIEW AND NOT INTENDED FOR CONSTRUCTION BIDDING OR PERMIT PURPOSES
OWAN J. CORRECOR, P.E.
TEXAS SERIAL NO. 47746
DATE: 02/03/2017

CITY OF HOUSTON
DEPARTMENT OF PUBLIC WORKS AND ENGINEERING

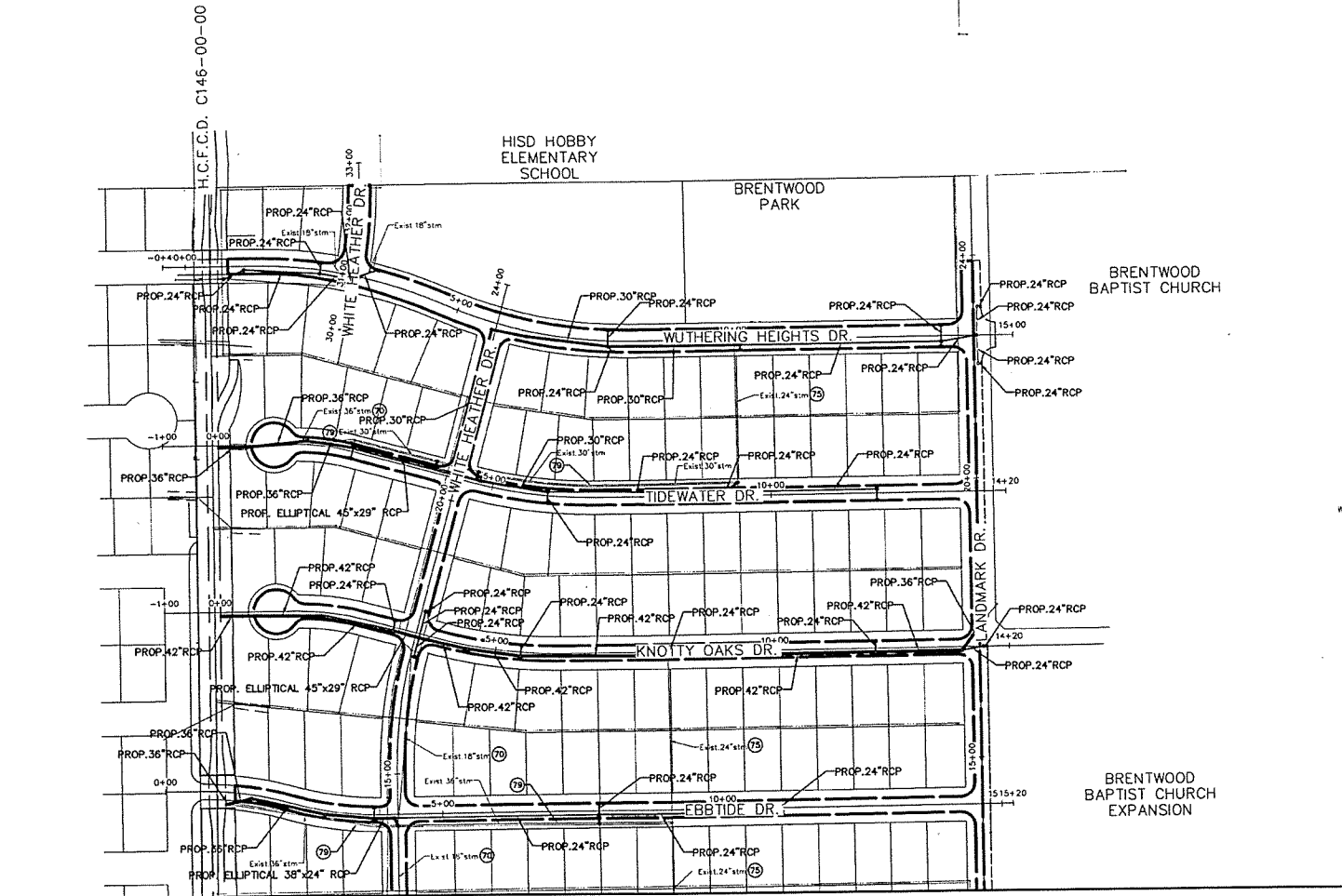
WHITE HEATHER DRAINAGE AND PAVING SUB-PROJECT IV
STORM SEWERS - EXISTING & PROPOSED PROJECT LAYOUT

1 OF 2

MES NO.: M-000262-0004-3	CITY DWG NO.:
FILE NO.: S465056	
DRAWING SCALE:	
1" = 100'	
CITY OF HOUSTON PW	
CHERYL HARRIS	
SHEET NO. 8 OF 211	

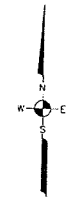
FOR REDUCED PLANS
ORIGINAL SCALE: 1"=40'

PLOTTED ON: Friday, February 03, 2012 11:18:44 PM
FILE NAME: F:\WHB-551\CAD\DWG\WHB-554-OVERALL_PROJECT_LAYOUT.DWG



MATCH LINE SHEET NO. #

- LEGEND**
- PROP. STORM SEWER (24" DIA.)
 - == PROP. STORM SEWER (GREATER THAN 24" DIA.)
 - PROP. STORM SEWER MH
 - PROP. INLET CONNECTION
 - EXIST. STORM SEWER
 - EXIST. INLET CONNECTION
 - ⊖ REMOVE EXISTING STORM SEWER
 - ⊕ PLUG AND ABANDON EXISTING STORM SEWER MANHOLE
 - ⊖ PLUG AND ABANDON EXISTING STORM SEWER
 - ⊕ EXISTING STORM SEWER TO REMAIN



PRIVATE UTILITY LINES SHOWN
 AT LEAST 48 HOURS BEFORE EXCAVATING BY SHEET NO. OR LOCATIONS, CALL THE LOCAL STAKEHOLDER 713.723.4567

Company Name	Date
Company Name	Date
Company Name	Date
Company Name	Date



SES HORIZON CONSULTING ENGINEERS, INC.
 ENGINEERS INC
 TEXAS REGISTERED ENGINEERING FIRM F-02032

THIS DOCUMENT IS FOR INTERNAL REVIEW AND NOT INTENDED FOR CONSTRUCTION BIDDING OR PERMIT PURPOSES.
 CHAIRMAN: J. COOPER, P.E.
 TEXAS REG. NO. 47746
 DATE: 02/02/12

CITY OF HOUSTON
 DEPARTMENT OF PUBLIC WORKS AND ENGINEERING

WHITE HEATHER DRAINAGE
 AND PAVING SUB-PROJECT IV
 STORM SEWERS - EXISTING & PROPOSED PROJECT LAYOUT

2 OF 2

WBS NO.: M-000262-0004-3	CITY DWG NO.:
FILE NO.: 5425056	
DRAWING SCALE:	
1" = 100'	
CITY OF HOUSTON	PH
CHERYL HARRIS	
SHEET NO. 9 OF 211	