

AN ORDINANCE ENLARGING THE BOUNDARIES OF REINVESTMENT ZONE NUMBER SEVEN, CITY OF HOUSTON, TEXAS (OLD SPANISH TRAIL/ALMEDA CORRIDORS ZONE); CONTAINING FINDINGS AND OTHER PROVISIONS RELATED TO THE FOREGOING SUBJECT; PROVIDING FOR SEVERABILITY; AND DECLARING AN EMERGENCY.

* * * * *

WHEREAS, the City Council of the City of Houston, Texas ("City"), pursuant to the provisions of Chapter 311, Texas Tax Code, as amended ("Code"), created Reinvestment Zone Number Seven, City of Houston, Texas ("Zone"), by Ordinance No. 1997-478, on May 7, 1997; and

WHEREAS, the City may enlarge the boundaries of an existing reinvestment zone pursuant to Section 311.007 of the Code; and

WHEREAS, the City Council previously enlarged the boundaries of the Zone by Ordinance No. 1998-1145 on December 9, 1998, Ordinance No. 2008-418 on May 14, 2008, Ordinance No. 2013-796 on September 11, 2013, and Ordinance No. 2016-956 on December 7, 2016; and

WHEREAS, the City desires to further enlarge the boundaries of the Zone by adding into the Zone approximately 94.8 acres of land ("Annexation Area") described in Exhibit "A" and depicted in Exhibit "B" attached to this Ordinance; and

WHEREAS, the City Council finds that the Annexation Area is located wholly within the corporate limits of the City; and

WHEREAS, the City Council finds that the Annexation Area meets the requirements of Section 311.005(a)(1) of the Code since it is substantially impairs and arrests the sound growth of the City, retards the provision of housing accommodations, and constitutes an economic and social liability and is a menace to the public health, safety, morals and welfare in its present condition and use because of the deterioration of the site and other improvements and due to defective or inadequate sidewalk and street layout; and

WHEREAS, less than thirty percent (30%) of the property within the Annexation Area, excluding property dedicated to public use, is used for residential purposes as described in Section 311.006(a)(1) of the Code; and

WHEREAS, the total appraised value of taxable real property within the enlarged Zone and in any other existing reinvestment zones does not exceed twenty-five percent (25%) of the total appraised value of taxable real property within the City and in the industrial districts created by the City as described in Section 311.006(a)(2)(A) of the Code; and

WHEREAS, the proposed improvements in the enlarged Zone will significantly enhance the value of all taxable real property within the Zone and will be of general benefit to the City; **NOW, THEREFORE,**

BE IT ORDAINED BY THE CITY COUNCIL OF THE CITY OF HOUSTON, TEXAS:

Section 1. That the findings and recitals contained in the preamble of this Ordinance are found and declared to be true and correct and are hereby adopted as part of this Ordinance for all purposes.

Section 2. That the City, acting in accordance with the provisions of Chapter 311 of the Code, including Sections 311.005, 311.006, and 311.007, does hereby enlarge Reinvestment Zone Number Seven, City of Houston, Texas, by adding the area described in Exhibit "A" and as shown on the map depicted in Exhibit "B," each of which is attached hereto.

Section 3. That the Zone shall be enlarged as of the effective date of this Ordinance.

Section 4. That the tax increment base for the enlarged Zone shall include the tax increment base established by Ordinance No. 1997-478, Ordinance No. 1998-1145, Ordinance No. 2008-418, Ordinance No. 2013-796, and Ordinance No. 2016-956, and beginning January 1, 2020, shall include the tax increment base attributable to the land added to the Zone by this Ordinance, which tax increment base shall be January 1 of the year in which this Ordinance becomes effective.

Section 5. That if any provision, section, subsection, sentence, clause, or phrase of this Ordinance, or the application of same to any person or set of

circumstances, is for any reason be held to be unconstitutional, void, or invalid, the validity of the remaining provisions of this Ordinance shall not be affected thereby, it being the intent of the City Council in adopting this Ordinance that no portion hereof or provision or regulation contained herein shall become inoperative or fail by reason of any unconstitutionality, voidness, or invalidity of any other portion hereof, and all provisions of this Ordinance are declared to be severable for that purpose.

Section 6. That there exists a public emergency requiring that this Ordinance be passed finally on the date of its introduction as requested in writing by the Mayor; therefore, this Ordinance shall be passed finally on such date and shall take effect immediately upon its passage and approval by the Mayor.

PASSED AND ADOPTED this 4th day of December, 2019.

APPROVED this _____ day of _____, 2019.

Mayor of the City of Houston

Pursuant to Article VI, Section 6, Houston City Charter, the effective date of the foregoing Ordinance is DEC 1 0 2019.

AT J. Haniel
City Secretary **Assistant**

Prepared by Legal Department Manya
MFB/ems November 26, 2019 Senior Assistant City Attorney
Requested by Andrew F. Icken
Chief Development Officer, Office of the Mayor
L.D. File No. 0421300011012

AYE	NO	
✓		MAYOR TURNER
••••	••••	COUNCIL MEMBERS
✓		STARDIG
	ABSENT	DAVIS
✓		COHEN
✓		BOYKINS
✓		MARTIN
✓		LE
	ABSENT	TRAVIS
✓		CISNEROS
✓		GALLEGOS
	ABSENT	LASTER
✓		MARTHA CASTEX-TATUM
✓		KNOX
✓		ROBINSON
✓		KUBOSH
✓		EDWARDS
✓		CHRISTIE
CAPTION	ADOPTED	

EXHIBIT "A"

**LEGAL DESCRIPTION OF ANNEXATION AREA
REINVESTMENT ZONE NUMBER SEVEN, CITY OF HOUSTON, TEXAS
(OLD SPANISH TRAIL/ALMEDA CORRIDORS ZONE)**

(see legal description immediately following this page)

Tract 1 of 37 being a +/- 11.12 acre tract of land situated east and southeast of intersection of Scott Street and Old Spanish Trail in the City of Houston, Harris County, Texas and being more particularly described as follows: BEGINNING at intersection of east right-of-way line of Scott St and south right-of-way line of Old Spanish Trail, same being boundary line of TIRZ No. 7 OST/Almeda, THENCE, east along south right-of-way line of Old Spanish Trail, across Scottcrest Dr to northeast corner of 0.4044 acre ABST 760 H TIERWESTER TR 33A (Metro SE Transit Center); THENCE, generally south along east boundary of said 0.4044 acre TR 33A to southeast corner of said TR 33A, same being north boundary of 2.9834 acre ABST 760 H TIERWESTER TR 36; THENCE, east by south along north boundary of said 2.9834 acre TR 36 to northeast corner of said tract; THENCE, south by west along east boundary of said 2.9834 acre TR 36, and 4 acre ABST 760 H TIERWESTER TR 19 to southeast corner of said 4 acre TR 19 tract; THENCE, west by north along south boundary of said 4 acre TR 19, continuing to west right-of-way line of Scottcrest Dr, same being east boundary of 0.891 acre ABST 760 H TIERWESTER TR 18E-3; THENCE, south by west and generally curving west along west right-of-way line of Scottcrest Dr to intersection with east right-of-way line of Scott St; THENCE, north along east right-of-way line of Scott St to south right-of-way line of Old Spanish Trail, same being point of beginning of +/- 11.12 acre tract 1 of 37.

Tract 2 of 37 being a +/- 8.13 acre tract of land situated on the southside of 3600 block of Old Spanish Trail, between Tierwester and La Salette Streets in the City of Houston, Harris County, Texas and being more particularly described as follows: BEGINNING at intersection of south right-of-way line of Old Spanish Trail and west right-of-way line of La Salette St, THENCE, generally south along west right-of-way line of La Salette St, same being boundary line of TIRZ No. 7 OST/Almeda, and east boundary of 2.1619 acre TRAIL SHOPPING PLAZA RES A BLK 1 to southeast corner of said 2.1619 acre BLK 1; THENCE, generally west northwest along south of said 2.1619 acre RES A BLK 1, and 1.345 acre TRAIL SHOPPING PLAZA RES A-1 BLK 1 to southwest corner of said 1.345 acre RES A-1 BLK 1, same being southeast corner of 1.0283 acre OST WHATABURGER RES B BLK 1; THENCE, west along south boundary of said 1.0283 acre RES B BLK 1 to southwest corner of said 1.0283 acre RES B BLK 1, same being east boundary of 2.0086 acre OST WHATABURGER RES A2 BLK 1; THENCE, south along east boundary said 2.0086 acre RES A2 BLK 1 to southeast corner of said 2.0086 acre RES A2 BLK 1; THENCE, generally west along south boundary of said 2.0086 acre RES A2 BLK 1 to southwest corner of said 2.0086 acre tract, same being east right-of-way line of Tierwester St; THENCE, north along east right-of-way line of Tierwester St, same being boundary line of TIRZ No. 7 OST/Almeda and west boundary of said 2.0086 acre RES A2 BLK 1, and 1.5846 acre OST WHATABURGER RES A1 BLK 1 to southwest corner of 0.3874 acre OST TIERWESTER RES A BLK 1; THENCE, east along south boundary of said 0.3874 acre RES A BLK 1 to southeast corner of said 0.3874 acre RES A BLK 1; THENCE, north along east boundary of said 0.3874 acre RES A BLK 1 to northeast corner of said 0.3874 acre RES A BLK 1, same being south right-of-way line of Old Spanish Trail; THENCE, east along south right-of-way line of Old Spanish Trail to west right-of-way line of La Salette St, same being point of beginning of +/- 8.13 acre tract 2 of 37.

Tract 3 of 37 being a +/- 4.07 acre tract of land situated along south side of Old Spanish Trail, between Allegheny Street on the west and Lozier Street on the east, in the City of Houston, Harris County, Texas and being more particularly described as follows: BEGINNING at intersection of south right-of-way line of Old Spanish Trail and east right-of-way line of Del Rio St, same being boundary line of TIRZ No. 7 OST/Almeda, and northwest corner of 0.474 acre SOUTHLAND PLACE LTS 1 & 2 BLK 1; THENCE, generally east along south right-of-way line of Old Spanish Trail, continuing east by south along south right-of-way line of Zephyr St, across Lozier St to northeast corner of 0.1679 acre SOUTHLAND PLACE LT 1 BLK 3; THENCE, south by west along east boundary of said 0.1679 acre LT 1 BLK 3 to southeast corner of said 0.1679 acre LT 1 BLK 3; THENCE, west by north along south boundary of said 0.1679 acre LT 1 BLK 3, across Lozier St and continuing along south boundary of 0.1797 acre SOUTHLAND PLACE LT 27 BLK 2 to southwest corner of said 0.1797 acre LT 27 BLK 2 and east boundary of 0.2223 acre SOUTHLAND PLACE LT 1 BLK 2; THENCE, generally south by west along east boundary of said 0.2223 acre LT 1 BLK 2 to southeast corner of said 0.2223 acre LT 1 BLK 2; THENCE, west by north along south boundary of 0.2223 acre LT 1 BLK 2, across Burkett St to east boundary of 0.3809 acre MEKDESSI DEVELOPMENT RES A BLK 1, same being west right-of-way line of Burkett St; THENCE, south by west along east boundary of said 0.3809 acre RES A BLK 1 to southeast corner of said 0.3809 acre RES A BLK 1; THENCE, west by north along south boundary of said 0.3809 acre RES A BLK 1 to southwest corner of said 0.3809 acre RES A BLK 1, same being east boundary of 0.474 acre SOUTHLAND PLACE LTS 1 & 2 BLK 1; THENCE, generally south by west along said 0.474 acre LTS 1 & 2 BLK 1 to southeast corner of said 0.474 acre LTS 1 & 2 BLK 1; THENCE, west by north along south boundary of said 0.474 acre LTS 1 & 2 BLK 1, continuing across Del Rio St to east boundary of 0.7545 acre PEERLESS OLD SPANISH TRAIL RES A BLK 1, same being west right-of-way line of Del Rio St; THENCE, south by west along east boundary of said 0.7545 acre RES A BLK 1 to southeast corner of said 0.7545 acre RES A BLK 1; THENCE, west by north along south boundary of said 0.7545 acre RES A BLK 1 to interior corner of said 0.7545 acre RES A BLK 1, same being north corner of 0.6887 acre GUNNER WAY RES A BLK 1; THENCE, south by west along south boundary said 0.7545 acre RES A BLK 1 to northeast corner of 0.1217 acre SOUTHLAND LT 4 & TR 3A BLK 7; THENCE, west by north along south boundary of said 0.7545 acre RES A BLK, across Peerless St, to northeast corner of 0.2847 acre SOUTHLAND LTS 4 & 5 BLK 8, same being west right-of-way line of Peerless St; THENCE, south by west along east boundary of said 0.2847 acre LTS 4 & 5 BLK 8 to southeast corner of said 0.2847 acre LTS 4 & 5 BLK 8; THENCE, west by north along south boundary of said 0.2847 acre LTS 4 & 5 BLK 8 to southwest corner of said 0.2847 acre LTS 4 & 5 BLK 8, same being east boundary of 0.78 acre BUSY BEE RES A BLK 1; THENCE, south by west along east boundary of said 0.78 acre RES A BLK 1 to southeast corner of said 0.78 acre tract; THENCE, west northwest along south boundary of said 0.78 acre RES A BLK 1 to southwest corner of said 0.78 acre tract; THENCE, north northwest along west boundary of said 0.78 acre RES A BLK 1 to west corner of said 0.78 acre tract, same being east right-of-way line of Allegheny St, and boundary line of TIRZ No. 7 OST/Almeda; THENCE, generally north by east along east boundary of 0.78 acre RES A BLK 1 to northwest corner of said 0.78 acre tract, same being south right-of-way line of Old Spanish Trail and boundary line of TIRZ No. 7 OST/Almeda; THENCE, generally east along south right-of-way line of Old Spanish Trail, across Peerless St to northwest

corner of 0.474 acre SOUTHLAND PLACE LTS 1 & 2 BLK 1, same being east right-of-way line of Del Rio St, same being point of beginning of +/- 4.07 acre tract 3 of 37.

Tract 4 of 37 being a +/- 4.26 acre tract of land situated along 6632-6899 block of Allegheny Street in the City of Houston, Harris County, Texas and being more particularly described as follows: BEGINNING at southeast corner of 7.682 acre BCM YELLOWSTONE RES A BLK 1 (Baylor College of Medicine), same being intersection of north right-of-way line of Yellowstone Blvd and west right-of-way line of Allegheny St, THENCE, generally north northeast along west right-of-way line of Allegheny St to northeast corner of said 7.682 acre RES A BLK 1; THENCE, east by south across Allegheny St to northwest corner of 0.2669 acre HERMAN PARK COURT ACRES TR 1, same being east right-of-way line of Allegheny St; THENCE, generally north northeast along east right-of-way line of Allegheny St, same being boundary line of TIRZ No. 7 OST/Almeda to northwest corner of 0.3719 acre HERMAN PARK COURT LTS 1 2 & 3 BLK 7; THENCE, north by east across open space to southwest corner of 0.78 acre BUSY BEE RES A BLK 1; THENCE, east by south along south boundary of said 0.78 RES A BLK 1 to southeast corner of said 0.78 acre RES A BLK 1, same being west boundary of SOUTHLAND BLK 8; THENCE, south by west across open space, continuing along east boundary of HERMAN PARK COURT BLK 7, and HERMAN PARK COURT ACRES TRS 1-1A -2 AND TRS 6-6D to southeast corner of HERMAN PARK COURT ACRES TRS 6D; THENCE, generally south southwest across Yellowstone Blvd, to northeast corner of PARK YELLOWSTONE APARTMENTS RES A BLK 1 (BLDGS 1 THRU 33), same being south right-of-way line of Yellowstone Blvd; THENCE, west northwest along south right-of-way line of Yellowstone Blvd to a point generally south by west of southeast corner of 7.682 acre BCM YELLOWSTONE RES A BLK 1, same being boundary line of TIRZ No. 7 OST/Almeda; THENCE, generally north by east across Yellowstone Blvd to southeast corner of said 7.682 acre RES A BLK 1, and intersection of north right-of-way line of Yellowstone Blvd with west right-of-way line of Allegheny St, same being point of beginning of +/- 4.26 acre tract 4 of 37.

Tract 5 of 37 being a +/- 10.86 acre tract of land located northeast of intersection of Old Spanish Trail and Almeda Road in the City of Houston, Harris County, Texas and being more particularly described as follows: BEGINNING at intersection of south right-of-way line of Old Spanish Trail and east right-of-way line of Almeda Road, same being northwest corner of 1.2949 acre CLINTON - OLD TRS 3A & 3B BLK 10; THENCE, north by east along east right-of-way line of Almeda Rd, across Old Spanish Trail, Payson St, Lockett St to northwest corner of 0.1761 acre CENTRAL CITY LT 1 BLK 1; THENCE, east by south along north boundary of said 0.1761 acre CENTRAL CITY LT 1 BLK to northeast corner of said 0.1761 acre LT 1 BLK 1; THENCE, south by west south along east boundary of said 0.1761 acre LT 1 BLK 1, across Lockett St, continuing along west boundary of 0.1866 acre CENTRAL CITY LT 14 BLK 2 to southwest corner of said 0.1866 acre LT 14 BLK 2; THENCE, east by south along south boundary of said 0.1866 acre LT 14 BLK 2 to southeast corner of said 0.1866 acre LT 14 BLK 2, same being northwest corner of 0.3364 acre CENTRAL CITY LT 33 BLK 2; THENCE, south by west along west boundary of said 0.3364 acre LT 33 BLK 2, continuing along CENTRAL CITY LTS 34-43 BLK 2, across Payson St to north boundary line of 0.5833 acre DEENS CENTRAL CITY RES B BLK 1, same being south right-of-way line of Payson St; THENCE, east by south curving south along boundary of said

0.5833 acre RES B BLK 1 to southeast corner of said 0.5833 acre RES B BLK 1, same being west right-of-way line of Burgess St; THENCE, generally east by north across Burgess St and along north boundary of 2.2697 acre HESSED DEVELOPMENT NO 4 RES A BLK 1 to northeast corner of said 2.2697 acre RES A BLK 1, same being west right-of-way line of Van Etten St; THENCE, projecting a line east southeast across Van Etten St to east right-of-way line of Van Etten St, same being northwest corner of 0.1869 acre CENTRAL CITY LT 1 BLK 4; THENCE, east along north boundary of said 0.1869 acre LT 1 BLK 4 to northeast corner of said 0.1869 acre LT 1 BLK 4; THENCE, southwest by south along east boundary of said 0.1869 acre LT 1 BLK 4 to southeast corner of said 0.1869 acre LT 1 BLK 4, same being north right-of-way line of Old Spanish Trail; THENCE, east by north along north right-of-way line of Old Spanish Trail to southwest corner of 0.0037 acre GROCERS SUPPLY SEC 1 ROW-CUTBACK (DEDICATED PER PLAT) (NM); THENCE, south by west across Old Spanish Trail to northwest corner of 1.2618 acre PARKSIDE - OLD CLINTON LTS 2 3 4 21 THRU 26 & TR 1 BLK 1, same being south right-of-way Old Spanish Trail, and boundary of TIRZ No. 7 OST/Almeda Exp; THENCE, generally west southwest along south right-of-way line of Old Spanish Trail to 1.2949 acre CLINTON - OLD TRS 3A & 3B BLK 10, and east right-of-way line of Almeda Rd, same being point of beginning of +/- 10.86 acre tract 5 of 37.

Tract 6 of 37 being a +/- 6.06 acre tract of land situated southwest of intersection of Griggs Road and Scott Street in the City of Houston, Harris County, Texas and being more particularly described as follows: BEGINNING at intersection of south right-of-way line of Griggs Rd and west right-of-way line of Scott St, THENCE, south by west along west right-of-way line of Scott St, same being boundary line of 1.2574 acre SCOTT STREET SHOPPING CTR AMEND RES A BLK 1, to southeast corner of said 1.2574 acre RES A BLK 1; THENCE, west by north along south boundary of said 1.2574 acre RES A BLK 1 to southwest corner of said 1.2574 acre RES A BLK 1, and east boundary of 1.39 acre RIVERSIDE GARDENS TR 2 BLK 3; THENCE, south by west along east boundary of said 1.39 acre TR 2 BLK 3 to southeast corner of said 1.39 acre TR 2 BLK 3; THENCE, west by south along south boundary of said 1.39 acre TR 2 BLK 3, across alleyway to east boundary of 1.09 acre RIVERSIDE GARDENS LT 1 BLK 3; THENCE, south and southwest curving west by south along south boundary of 1.09 acre LT 1 BLK 3 to southwest corner of said 1.09 acre LT 1 BLK 3, same being east right-of-way line of La Salette St; THENCE, generally north along east right-of-way line of La Salette St, across Odin Ct, to northwest corner of 1.46 acre RIVERSIDE GARDENS LT 8 BLK 2; THENCE, east by south along north boundary of said 1.46 acre LT 8 BLK 2, across Odin Ct, continuing along north boundary of 1.2574 acre RIVERSIDE GARDENS TR 2 BLK 3 to northeast corner of said 1.2574 acre TR 2 BLK 3 and west boundary of said 1.2574 acre SCOTT STREET SHOPPING CTR AMEND RES A BLK 1; THENCE, north by east along west boundary of said 1.2574 acre SCOTT STREET SHOPPING CTR AMEND RES A BLK 1 to south boundary of 0.3306 acre RIVERSIDE GARDENS LT 9 & TR 10 BLK 1; THENCE, east by south along south boundary of 0.3306 acre RIVERSIDE GARDENS LT 9 & TR 10 BLK 1 to southeast corner of said 0.3306 acre LT 9 & TR 10 BLK 1; THENCE, north by east along east boundary of said 0.3306 acre LT 9 & TR 10 BLK 1 to northeast corner of said 0.3306 acre LT 9 & TR 10 BLK 1, same being south right-of-way line of Griggs

Rd; THENCE, east by south along south right-of-way line of Griggs Rd to west right-of-way line of Scott St, same being point of beginning of +/- **6.06** acre tract 6 of 37.

Tract 7 of 37 being a +/- 10.82 acre tract of land located along north side of 4300 block of Old Spanish Trail in the City of Houston, Harris County, Texas and being more particularly described as follows: BEGINNING at intersection of north right-of-way line of Old Spanish Trail and west right-of-way line of Cullen Blvd, same being southeast corner of ABST 51 L MOORE TR 6A; THENCE, generally north and north northwest along west right-of-way line of Cullen Blvd, and boundary line of TIRZ No. 7 OST/Almeda to north corner of 0.115 acre ABST 51 L MOORE TR 6E; THENCE, north northwest along boundary line of TIRZ No. 7 OST/Almeda, across Cullendale St and Glen Cove Dr to southeast boundary of 0.2801 acre RIVERSIDE TERRACE SEC 18 TRS 21 & 21A-1 BLK 80; THENCE, north by east along southeast boundary of said 0.2801 acre TRS 21 & 21A-1 BLK 80 to east corner of said 0.2801 acre TRS 21 & 21A-1 BLK 80; THENCE, projecting a line generally northeast across right-of-way line of Cullen Blvd to southwest corner of 0.2475 acre RIVERSIDE TERRACE ANNEX TR 14, same being south boundary of RIVERSIDE TERRACE ANNEX; THENCE, east by south along south boundary of RIVERSIDE TERRACE ANNEX TRS 10-14, LTS 8-9 to southeast corner of 0.2094 acre RIVERSIDE TERRACE ANNEX LT 8, and west boundary of 2.0054 acre ALAMO COURT RES A BLK 1; THENCE, north by east along west boundary of said 2.0054 acre RES A BLK 1 to northwest corner of said 2.0054 acre RES A BLK 1; THENCE, east by south along north boundary of said 2.0054 acre RES A BLK 1, across Blythwood St to west boundary of 1.627 acre ABST 51 L MOORE TR 5A, same being east right-of-way line of Blythwood St; THENCE, generally north northeast along east right-of-way line of Blythwood St to south right-of-way line of Laurel St, same being northwest corner of 1.8576 acre ABST 51 L MOORE TRS 5C & 5D; THENCE, east by south along south right-of-way line of Laurel St, same being north boundary of said 1.8576 acre TRS 5C & 5D to west boundary of 0.2652 acre ABST 51 L MOORE TR 5C-1; THENCE, north by east along west boundary of said 0.2652 acre ABST 51 L MOORE TR 5C-1 to northwest corner of said 0.2652 acre TR 5C-1; THENCE, east by south along north boundary of said 0.2652 acre TR 5C-1 to northeast corner of said 0.2652 acre TR 5C-1; THENCE, south southwest along east boundary of said 0.2652 acre TR 5C-1, and 1.8576 acre ABST 51 L MOORE TRS 5C & 5D to southeast corner of said 1.8576 acre TRS 5C & 5D, same being north right-of-way line of Old Spanish Trail and boundary of TIRZ No. 7 OST/Almeda; THENCE, generally west southwest along north right-of-way line of Old Spanish Trail, across Blythwood St continuing to east right-of-way line of Cullen Blvd, same being point of beginning of +/- **10.82** acre tract 7 of 37.

Tract 8 of 37 being a +/- 8.83 acre tract of land situated on the south side of 4700-5000 block of Old Spanish Trail, between Calhoun Road and Martin Luther King Boulevard in the City of Houston, Harris County, Texas and being more particularly described as follows: BEGINNING at intersection of east right-of-way line of Calhoun Rd and south right-of-way line of Old Spanish Trail, same being boundary line of TIRZ No. 7 OST/Almeda Annex, THENCE, generally east by north along south right-of-way line of Old Spanish Trail, and north boundary of RIVERSIDE TERRACE SEC 11 BLKS 58-59 to northeast corner of 1.308 acre KACALS RES A BLK 1, and north corner of 0.8857 acre RIVERSIDE TERRACE SEC 11 LT 21 & TRS 19 20A 22 & 23 BLK 59; THENCE, generally east and curving southeast along east boundary of said 0.8857 acre LT 21

& TRS 19 20A 22 & 23 BLK 59 to east corner of said 0.8857 acre tract; THENCE, south southwest along east boundary of said 0.8857 acre LT 21 & TRS 19 20A 22 & 23 BLK 59 to south boundary of said 0.8857 acre tract, same being north right-of-way line of Winnetka Ave; THENCE, southwest by west along south boundary of said 0.8857 acre tract to south corner of said 0.8857 acre tract, same being east corner of 0.163 acre tract RIVERSIDE TERRACE SEC 11 TR 24 BLK 59; THENCE, generally northwest, and curving continuing southwest by west along north boundary of RIVERSIDE TERRACE SEC 11 TR 24 BLK 59, and TRS 25-42 BLK 59, across right-of-way line of Belvedere St, and continuing along RIVERSIDE TERRACE SEC 11 TRS 17-33, and LTS 34-26 TR BLK 58 to northwest corner of 0.2066 acre RIVERSIDE TERRACE SEC 11 LT 36 BLK 58, same being east right-of-way line of Calhoun Rd; THENCE, north by east along east right-of-way line of Calhoun Rd to south right-of-way line of Old Spanish Trail, same being point of beginning of +/- **8.83** acre tract 8 of 37.

Tract 9 of 37 being a +/- 7.68 acre tract of land located southeast of intersection of Old Spanish Trail and Martin Luther King Blvd in the City of Houston, Harris County, Texas and being more particularly described as follows: BEGINNING at intersection of east right-of-way line of Martin Luther King Blvd and north right-of-way line of Arvilla Ln, THENCE, generally north along east right-of-way line of Martin Luther King Blvd, same being boundary line of TIRZ No. 7 OST/Almeda Annex to south right-of-way line of Old Spanish Trail; THENCE, generally east northeast along south right-of-way line of Old Spanish Trail, same being north boundary of 1.6636 acre MARTIN LUTHER KING CORNER RES B BLK 1, and 1.6912 acre ABST 51 L MOORE TRS 8 8B & 8E to northeast corner of said 1.6912 acre TRS 8 8B & 8E; THENCE, southeast along east boundary of said 1.6912 acre TRS 8 8B & 8E to southeast corner of said 1.6912 acre tract; THENCE, west by south along south boundary of said 1.6912 acre TRS 8 8B & 8E and 1.6636 acre MARTIN LUTHER KING CORNER RES B BLK 1 to northeast corner of 4.3249 acre MARTIN LUTHER KING CORNER RES A BLK 1; THENCE, south by east along east boundary of said 4.3249 acre RES A BLK 1 to southeast corner of said tract, same being north right-of-way line of Arvilla Ln; THENCE, generally west southwest along north right-of-way line of Arvilla Ln same being point of beginning of +/- **7.68** acre tract 9 of 37.

Tract 10 of 37 being a +/- 13.05 acre tract of land situated along Old Spanish Trail, between Texas Spur 5 and Delafield St, in the City of Houston, Harris County, Texas and being more particularly described as follows: BEGINNING at north right-of-way line of Old Spanish Trail and southwest corner of 3.505 acre ABST 51 L MOORE TR R55A E 1/2 OF 10, THENCE, east northeast along south boundary of said 3.505 acre TR R55A E 1/2 OF 10, across A T & Santa Fe Rail Easement to southeast corner of 5.19 acre ABST 51 L MOORE TRS R55A 56 SUBJ TO .864 HCFC; THENCE, north by west along east boundary of said 5.19 acre TRS R55A 56 SUBJ TO .864 HCFC to southwest corner of north portion of 4.043 acre ABST 51 L MOORE TR R32 NEW S YD LT10 PT7 ROW E OF S FE RY TO BRAES BAYOU (INC BAYOU,OST,90,PRODUCE ROW); THENCE, northeast, east and southeast along south boundary of north portion of said 4.043 acre TR R32 to southeast corner of said 4.043 acre TR R32 and west boundary of 5.5352 acre ABST 51 L MOORE TR 33A; THENCE, south southeast along west boundary of said 5.5352 acre TR 33A to southwest corner of said 5.5352 acre TR 33A, same being north right-of-way line of Old Spanish Trail; THENCE, generally east by north along north right-of-way line of Old

Spanish Trail to a point due north of northeast corner of 5.4357 acre ABST 51 L MOORE TR 90 BLK 90 & TRS 29A 29B & 33B EDMUNDSON SEC 5; THENCE, south across right-of-way line of Old Spanish Trail to northeast corner of said 5.4357 acre TR 90 BLK 90 & TRS 29A 29B & 33B EDMUNDSON SEC 5; THENCE, south by west along east boundary of said 5.4357 acre tract to interior corner of said tract, same being southwest corner of 1.8386 acre W L EDMUNDSON SEC 5 TRS 91 & 92; THENCE, east by south along south boundary of said 1.8386 acre TRS 91 & 92 to southeast corner of said 1.8386 acre TRS 91 & 92, same being west right-of-way line of Delafield St; THENCE, south by west along west right-of-way line of Delafield St to northeast corner 1.8562 acre W L EDMUNDSON SEC 5 TR 88 BLK 88 & TR 89 BLK 89; THENCE, west by north along north boundary of said 1.8562 acre W L EDMUNDSON SEC 5 TR 88 BLK 88 & TR 89 BLK 89 to northwest corner of said 1.8562 acre and east boundary of said 5.4357 acre ABST 51 L MOORE TR 90 BLK 90 & TRS 29A 29B & 33B EDMUNDSON SEC 5; THENCE, south by west along east boundary of said 5.4357 acre TR 90 to south corner of said 5.4357 acre TR 90, same being north right-of-way line of Produce Row; THENCE, west by north along north right-of-way line of Produce Row, to southwest corner of said 5.4357 acre TR 90, same being southeast corner of 10.067 acre ABST 51 L MOORE TR 33; THENCE, generally north by east along east boundary of said 10.067 acre TR 33 to northeast corner of said 10.067 acre TR 33, same being south right-of-way line of Old Spanish Trail; THENCE, west southwest along south right-of-way line of Old Spanish Trail, across A T & Santa Fe Rail Easement to northeast corner of 0.4478 acre ABST 51 L MOORE TR 8F; THENCE, generally south southeast along east boundary of said 0.4478 acre TR 8F to southeast corner of said 0.4478 acre TR 8F; THENCE, west by south along south boundary of said 0.4478 acre TR 8F to southwest corner of said 0.4478 acre TR 8F; THENCE, generally north northwest along west boundary of said 0.4478 acre TR 8F to northwest corner of said 0.4478 acre TR 8F, same being south right-of-way line of Old Spanish Trail; THENCE, west by north and north northwest across Old Spanish Trail, to north right-of-way line of Old Spanish Trail and southwest corner of ABST 51 L MOORE TR R55A E 1/2 OF 10, same being point of beginning of +/- **13.05** acre tract 10 of 37.

Tract 11 of 37 being a +/- 1.74 acre tract of land centered on the 2000 block of Truxillo Street, between State Highway 288 and Hutchins Street in the City of Houston, Harris County, Texas and being more particularly described as follows: BEGINNING at intersection of west right-of-way line of Hutchins St and east corner of 0.1205 acre WASHINGTON TERRACE LT 12 BLK 1, same being boundary line of TIRZ 7 OST/Almeda Annex, THENCE, southwest by south along west right-of-way line of Hutchins St, across Truxillo St, continuing along east boundary of WASHINGTON TERRACE LT 11 BLK 2 to south corner of said LT 11 BLK 2; THENCE, northwest by west along south boundary of said LT 11 BLK 2, and LOTS 7-10 BLK 2 to west corner of 0.1205 acre WASHINGTON TERRACE LT 7 BLK 2; THENCE, northeast by north along north boundary of said 0.1205 acre LT 7 BLK 2 to north corner of said LT 7 BLK 2 and south right-of-way line of Truxillo St; THENCE, projecting a line north by west, across Truxillo St to west corner of 0.1326 acre WASHINGTON TERRACE LT 17 BLK 1; THENCE, northeast by north along 0.1326 acre LT 17 BLK 1 to north corner of said 0.1326 acre LT 17 BLK 1; THENCE, southeast by south along northeast boundary of said 0.1326 acre LT 17 BLK 1, and WASHINGTON TERRACE LTS 12-16 BLK 1 to east corner of 0.1205 acre WASHINGTON

TERRACE LT 12 BLK 1, and west right-of-way line of Hutchins St, same being point of beginning of +/- 1.74 acre tract 11 of 37.

Tract 12 of 37 being a +/- 3.27 acre tract of land centered on the 2200 block of Truxillo Street, between Hutchins Street and Emancipation Avenue in the City of Houston, Harris County, Texas and being more particularly described as follows: BEGINNING at intersection of west right-of-way line of Emancipation Ave and south corner of 0.241 acre WASHINGTON TERRACE LTS 12 & 13 BLK 4, same being boundary line of TIRZ 7 OST/Almeda Annex, THENCE, southwest by south along west right-of-way line of Emancipation Ave, across Truxillo St, to east corner of 0.1205 acre WASHINGTON TERRACE LT 11 BLK 5 (PRORATED 6-10-19), same being south right-of-way line of Truxillo St; THENCE, northwest by west along south right-of-way line of Truxillo St to east corner of 0.1205 acre of WASHINGTON TERRACE LT 10 BLK 5; THENCE, southwest by south along southeast boundary of said 0.1205 acre LT 10 BLK 5 to south corner of said 0.1205 acre LT 10 BLK 5; THENCE, northwest by west along southwest boundary of said LOTS 1-9 BLK 5 to west corner of WASHINGTON TERRACE LT 1 BLK 5, same being east right-of-way line of Hutchins St, same being boundary line of TIRZ 7 OST/Almeda Annex; THENCE, northeast by north along northwest boundary of WASHINGTON TERRACE LT 1 BLK 5, across Truxillo St, to north corner of said 0.1326 WASHINGTON TERRACE LT 22 BLK 4; THENCE, southeast by south along north boundary of WASHINGTON TERRACE LT 22 BLK 4, and LTS 14-21 BLK 4 to east corner of 0.1205 acre WASHINGTON TERRACE LT 14 BLK 4, and north corner of 0.241 acre WASHINGTON TERRACE LTS 12 & 13 BLK 4; THENCE, southwest by south to west corner of said 0.241 acre LTS 12 & 13 BLK 4, same being north right-of-way line of Truxillo St; THENCE, southeast by east to west right-of-way line of Emancipation Ave, same being point of beginning of +/- 3.27 acre tract 12 of 37.

Annexation of the following 25 individual real property lots located adjacent to the boundary line of TIRZ No. 7 OST/Almeda, and are along Emancipation Avenue between Pierce Street on the north and Southmoore Boulevard on the south.

Lot 13 of 37 being a 0.1148 acre lot located at north corner of Emancipation Avenue and Pierce Street and described as SSBB LT 1 BLK 391 (0 GULF FWY, HCAD NUM: 0021090000001) BEGINNING at intersection of west right-of-way line of Emancipation Ave and north right-of-way line of Pierce St, THENCE, northwest by north to west corner of said 0.1148 acre lot; THENCE, northeast by north to north corner of said 0.1148 acre lot; THENCE, southeast by south to east corner of said 0.1148 acre lot; THENCE, southwest by south to south corner of said 0.1148 acre lot, same being point of beginning of 0.1148 acre lot 13 of 37.

Lot 14 of 37 being a 0.1607 acre lot located at east corner of Emancipation Avenue and Pierce Street and described as SSBB LT 6 & TR 7 BLK 390 (1915 EMANCIPATION AVE, HCAD NUM: 0021080000006) BEGINNING at intersection of east right-of-way line of Emancipation Ave and north right-of-way line of Pierce St, THENCE, northeast by north to north corner of said 0.1607 acre lot; THENCE, southeast by south to east corner of said 0.1607 acre lot; THENCE, southwest by south to south corner of said 0.1607 acre lot; THENCE, northwest by north to west corner of said 0.1607 acre lot, same being point of beginning of 0.1607 acre lot 14 of 37.

Lot 15 of 37 being a 0.0442 acre lot located along west side of 2300 block of Emancipation Avenue and described as WATERHILL HOMES ON MCILHENNY STREET LT 4 BLK 1 (2318 EMANCIPATION AVE, HCAD NUM: 1282710010004) BEGINNING at intersection of west right-of-way line of Emancipation Ave and east corner of said 0.0442 acre lot, THENCE, southwest by south to south corner of said 0.0442 acre lot; THENCE, northwest by north to west corner of said 0.0442 acre lot; THENCE, northeast by north to north corner of said 0.0442 acre lot; THENCE, southeast by south to east corner of said 0.0442 acre lot, same being point of beginning of 0.0442 acre lot 15 of 37.

Lot 16 of 37 being a 0.3564 acre lot located at south corner of Emancipation Avenue and Winbern Street and described as GEISELMAN LTS 1 2 & 3 BLK 5 (, HCAD NUM: 0192080000001) BEGINNING at intersection of east right-of-way line of Emancipation Ave and south right-of-way line of Winbern St, THENCE, southeast by south to east corner of said 0.3564 acre lot; THENCE, southwest by south to south corner of said 0.3564 acre lot; THENCE, northwest by north to west corner of said 0.3564 acre lot; THENCE, northeast by north to north corner of said 0.3564 acre lot, same being point of beginning of 0.3564 acre lot 16 of 37.

Lot 17 of 37 being a 0.1326 acre lot located on east side of 4100 block of Emancipation Avenue and described as WASHINGTON TERRACE LT 1 BLK 10 (2402 CLEBURNE ST, HCAD NUM: 0611490000001) BEGINNING at intersection of east right-of-way line of Emancipation Ave and south right-of-way line of Cleburne St, THENCE, southeast by south to east corner of said 0.1326 acre lot; THENCE, southwest by south to south corner of said 0.1326 acre lot; THENCE, northwest by north to west corner of said 0.1326 acre lot; THENCE, northeast by north to north corner of said 0.1326 acre lot, same being point of beginning of 0.1326 acre lot 17 of 37.

Lot 18 of 37 being a 0.1326 acre lot located on eastside of 4100 block of Emancipation Avenue and described as WASHINGTON TERRACE LT 22 BLK 10 (2401 EAGLE ST, HCAD NUM: 0611490000022) BEGINNING at intersection of east right-of-way line of Emancipation Ave and north right-of-way line of Eagle St, THENCE, northeast by north to north corner of said 0.1326 acre lot; THENCE, southeast by south to east corner of said 0.1326 acre lot; THENCE, southwest by south to south corner of said 0.1326 acre lot; THENCE, northwest by north to west corner of said 0.1326 acre lot, same being point of beginning of 0.1326 acre lot 18 of 37.

Lot 19 of 37 being a 0.1326 acre lot located on east side of 4300 block of Emancipation Avenue and described as WASHINGTON TERRACE LT 1 BLK 12 (2402 BARBEE ST, HCAD NUM: 0611510000001) BEGINNING at intersection of east right-of-way line of Emancipation Ave and south right-of-way line of Barbee St, THENCE, southeast by south to east corner of said 0.1326 acre lot; THENCE, southwest by south to south corner of said 0.1326 acre lot; THENCE, northwest by north to west corner of said 0.1326 acre lot; THENCE, northeast by north to north corner of said 0.1326 acre lot, same being point of beginning of 0.1326 acre lot 19 of 37.

Lot 20 of 37 being a 0.1687 acre lot located on east side of 4300 block of Emancipation Avenue and described as WASHINGTON TERRACE 3RD PAR R/P RES A BLK 1 (4311 EMANCIPATION AVE, HCAD NUM: 0611680390001) BEGINNING at intersection of east right-of-way line of Emancipation Ave and north right-of-way line of Wheeler St, THENCE,

northeast by north to north corner of said 0.1687 acre lot; THENCE, southeast by south to east corner of said 0.1687 acre lot; THENCE, southwest by south to south corner of said 0.1687 acre lot; THENCE, northwest by north to west corner of said 0.1687 acre lot, same being point of beginning of 0.1687 acre lot 20 of 37.

Lot 21 of 37 being a 0.1148 acre lot located at north corner of Emancipation Avenue and Ruth Street and described as ALMEDA PLACE LT 12 BLK B (2321 RUTH ST, HCAD NUM: 0521480020012) BEGINNING at intersection of west right-of-way line of Emancipation Ave and north right-of-way line of Ruth St, THENCE, northwest by north to west corner of said 0.1148 acre lot; THENCE, northeast by north to north corner of said 0.1148 acre lot; THENCE, southeast by south to east corner of said 0.1148 acre lot; THENCE, southwest by south to south corner of said 0.1148 acre lot, same being point of beginning of 0.1148 acre lot 21 of 37.

Lot 22 of 37 being a 0.1148 acre lot located at west corner of Emancipation Avenue and Ruth Street and described as ALMEDA PLACE LT 11 BLK C (2324 RUTH ST, HCAD NUM: 0521480030011) BEGINNING at intersection of west right-of-way line of Emancipation Ave and south right-of-way line of Ruth St, THENCE, southeast by south to east corner of said 0.1148 acre lot; THENCE, southwest by south to south corner of said 0.1148 acre lot; THENCE, northwest by north to west corner of said 0.1148 acre lot, THENCE, northeast by north to north corner of said 0.1148 acre lot, same being point of beginning of 0.1148 acre lot 22 of 37.

Lot 23 of 37 being a 0.1326 acre lot located at south corner of Emancipation Avenue and Ruth Street and described as WASHINGTON TERRACE LT 1 BLK 15 (2402 RUTH ST, HCAD NUM: 0611540000001) BEGINNING at intersection of east right-of-way line of Emancipation Ave and south right-of-way line of Ruth St, THENCE, southeast by south to east corner of said 0.1326 acre lot; THENCE, southwest by south to south corner of said 0.1326 acre lot; THENCE, northwest by north to west corner of said 0.1326 acre lot, THENCE, northeast by north to north corner of said 0.1326 acre lot, same being point of beginning of 0.1326 acre lot 23 of 37.

Lot 24 of 37 being a 0.3134 acre lot located at east corner of Emancipation Avenue and Blodgett Street and described as WASHINGTON TERRACE LTS 19 & 20 BLK 15 (2401 BLODGETT ST, HCAD NUM: 0611540000019) BEGINNING at intersection of east right-of-way line of Emancipation Ave and north right-of-way line of Blodgett St, THENCE, northeast by north to north corner of said 0.3134 acre lot; THENCE, southeast by south to east corner of said 0.3134 acre lot; THENCE, southwest by south to south corner of said 0.3134 acre lot; THENCE, northwest by north to west corner of said 0.3134 acre lot, same being point of beginning of 0.3134 acre lot 24 of 37.

Lot 25 of 37 being a 0.1653 acre lot located at west corner of Emancipation Avenue and Wentworth Street and described as RIVERSIDE TERRACE SEC 1 LT 11 BLK 8 (2318 WENTWORTH ST, HCAD NUM: 0611000000011) BEGINNING at intersection of west right-of-way line of Emancipation Ave and south right-of-way line of Wentworth St, THENCE, southwest by south to south corner of said 0.1653 acre lot; THENCE, northwest by north to west corner of said 0.1653 acre lot; THENCE, northeast by north to north corner of said 0.1653 acre lot; THENCE, southeast

by south to east corner of said 0.1653 acre lot, same being point of beginning of 0.1653 acre lot 25 of 37.

Lot 26 of 37 being a 0.1653 acre lot located at east corner of Emancipation Avenue and Arbor Street and described as RIVERSIDE TERRACE SEC 1 LT 22 BLK 13 (2403 ARBOR ST, HCAD NUM: 0611050000022) BEGINNING at intersection of east right-of-way line of Emancipation Ave and north right-of-way line of Arbor St, THENCE, northeast by north to north corner of said 0.1653 acre lot; THENCE, southeast by south to east corner of said 0.1653 acre lot; THENCE, southwest by south to south corner of said 0.1653 acre lot, THENCE, northwest by north to west corner of said 0.1653 acre lot, same being point of beginning of 0.1653 acre lot 26 of 37.

Lot 27 of 37 being a 0.1653 acre lot located at west corner of Emancipation Avenue and Arbor Street and described as RIVERSIDE TERRACE SEC 1 LT 11 BLK 9 (2318 ARBOR ST, HCAD NUM: 0611010000011) BEGINNING at intersection of west right-of-way line of Emancipation Ave and north right-of-way line of Arbor St, THENCE, southwest by south to south corner of said 0.1653 acre lot; THENCE, northwest by north to west corner of said 0.1653 acre lot; THENCE, northeast by north to north corner of said 0.1653 acre lot; THENCE, southeast by south to east corner of said 0.1653 acre lot, same being point of beginning of 0.1653 acre lot 27 of 37.

Lot 28 of 37 being a 0.1653 acre lot located at south corner of Emancipation Avenue and Arbor Street and described as RIVERSIDE TERRACE SEC 1 LT 1 BLK 14 (2402 ARBOR ST, HCAD NUM: 0611060000001) BEGINNING at intersection of east right-of-way line of Emancipation Ave and south right-of-way line of Arbor St, THENCE, southeast by south to east corner of said 0.1653 acre lot; THENCE, southwest by south to south corner of said 0.1653 acre lot; THENCE, northwest by north to west corner of said 0.1653 acre lot; THENCE, northeast by north to north corner of said 0.1653 acre lot, same being point of beginning of 0.1653 acre lot 28 of 37.

Lot 29 of 37 being a 0.3719 acre lot located at north corner of Emancipation Avenue and Rosedale Street and described as RIVERSIDE TERRACE SEC 1 LTS 12 & 13 & TR 14A BLK 9 (2311 ROSEDALE ST, HCAD NUM: 0611010000012) BEGINNING at intersection of west right-of-way line of Emancipation Ave and north right-of-way line of Rosedale St, THENCE, northwest by north to west corner of said 0.3719 acre lot; THENCE, northeast by north to north corner of said 0.3719 acre lot; THENCE, southeast by south to east corner of said 0.3719 acre lot; THENCE, southwest by south to south corner of said 0.3719 acre lot, same being point of beginning of 0.3719 acre lot 29 of 37.

Lot 30 of 37 being a 0.2644 acre lot located at east corner of Emancipation Avenue and Rosedale Street and described as RIVERSIDE TERRACE SEC 1 LT 20 & TR 19 BLK 14 (2403 ROSEDALE ST, HCAD NUM: 0611060000019) BEGINNING at intersection of east right-of-way line of Emancipation Ave and north right-of-way line of Rosedale St, THENCE, northeast by north to north corner of said 0.2644 acre lot; THENCE, southeast by south to east corner of said 0.2644 acre lot; THENCE, southwest by south to south corner of said 0.2644 acre lot; THENCE, northwest by north to west corner of said 0.2644 acre lot, same being point of beginning of 0.2644 acre lot 30 of 37.

Lot 31 of 37 being a 0.2045 acre lot located at west corner of Emancipation Avenue and Rosedale Street and described as RIVERSIDE TERRACE SEC 1 LT 9 BLK 10 (2316 ROSEDALE ST, HCAD NUM: 0611020000009) BEGINNING at intersection of west right-of-way line of Emancipation Ave and south right-of-way line of Rosedale St, THENCE, southwest by south to south corner of said 0.2045 acre lot; THENCE, northwest by north to west corner of said 0.2045 acre lot; THENCE, northeast by north to north corner of said 0.2045 acre lot; THENCE, southeast by south to east corner of said 0.2045 acre lot, same being point of beginning of 0.2045 acre lot 31 of 37.

Lot 32 of 37 being a 0.179 acre lot located at corner of Emancipation Avenue and Wichita Street and described as RIVERSIDE TERRACE SEC 1 LT 10 BLK 10 (2317 WICHITA ST, HCAD NUM: 0611020000010) BEGINNING at intersection of west right-of-way line of Emancipation Ave and north right-of-way line of Wichita St, THENCE, southwest by south to south corner of said 0.179 acre lot; THENCE, northwest by north to west corner of said 0.179 acre lot; THENCE, northeast by north to north corner of said 0.179 acre lot; THENCE, southeast by south to east corner of said 0.179 acre lot, same being point of beginning of 0.179 acre lot 32 of 37.

Lot 33 of 37 being a 0.2238 acre lot located at corner of Emancipation Avenue and Wichita Street and described as RIVERSIDE TERRACE SEC 1 LT 20 & TR 19 BLK 15 (2401 WICHITA ST, HCAD NUM: 0611070000019) BEGINNING at intersection of east right-of-way line of Emancipation Ave and north right-of-way line of Wichita St, THENCE, northeast by north to north corner of said 0.2238 acre lot; THENCE, southeast by south to east corner of said 0.2238 acre lot; THENCE, southwest by south to south corner of said 0.2238 acre lot; THENCE, northwest by north to west corner of said 0.2238 acre lot, same being point of beginning of 0.2238 acre lot 33 of 37.

Lot 34 of 37 being a 0.1791 acre lot located at corner of Emancipation Avenue and Wichita Street and described as RIVERSIDE TERRACE SEC 1 LT 11 BLK 11 (5102 EMANCIPATION AVE, HCAD NUM: 0611030000011) BEGINNING at intersection of west right-of-way line of Emancipation Ave and south right-of-way line of Wichita St, THENCE, southwest by south to south corner of said 0.1791 acre lot; THENCE, northwest by north to west corner of said 0.1791 acre lot; THENCE, northeast by north to north corner of said 0.1791 acre lot; THENCE, southeast by south to east corner of said 0.1791 acre lot, same being point of beginning of 0.1791 acre lot 34 of 37.

Lot 35 of 37 being a 0.2387 acre lot located at corner of Emancipation Avenue and Wichita Street and described as RIVERSIDE TERRACE SEC 3 LT 24 & TR 23 BLK 24 (2402 WICHITA ST, HCAD NUM: 0611170000023) BEGINNING at intersection of east right-of-way line of Emancipation Ave and south right-of-way line of Wichita St, THENCE, southeast by south to east corner of said 0.2387 acre lot; THENCE, southwest by south to south corner of said 0.2387 acre lot; THENCE, northwest by north to west corner of said 0.2387 acre lot; THENCE, northeast by north to north corner of said 0.2387 acre lot, same being point of beginning of 0.2387 acre lot 35 of 37.

Lot 36 of 37 being a 0.6894 acre lot located at north corner of Emancipation Avenue and Southmoore Boulevard and described as DOWLING CHEVRON SEC 1 RES A BLK 1 (2329 SOUTHMORE BLVD, HCAD NUM: 1258590010001) BEGINNING at intersection of west right-of-way line of Emancipation Ave and north right-of-way line of Southmoore Boulevard, THENCE, northwest by north to west corner of said 0.6894 acre lot; THENCE, northeast by north to north corner of said 0.6894 acre lot; THENCE, southeast by south to east corner of said 0.6894 acre lot; THENCE, southwest by south to south corner of said 0.6894 acre lot, same being point of beginning of 0.6894 acre lot 36 of 37.

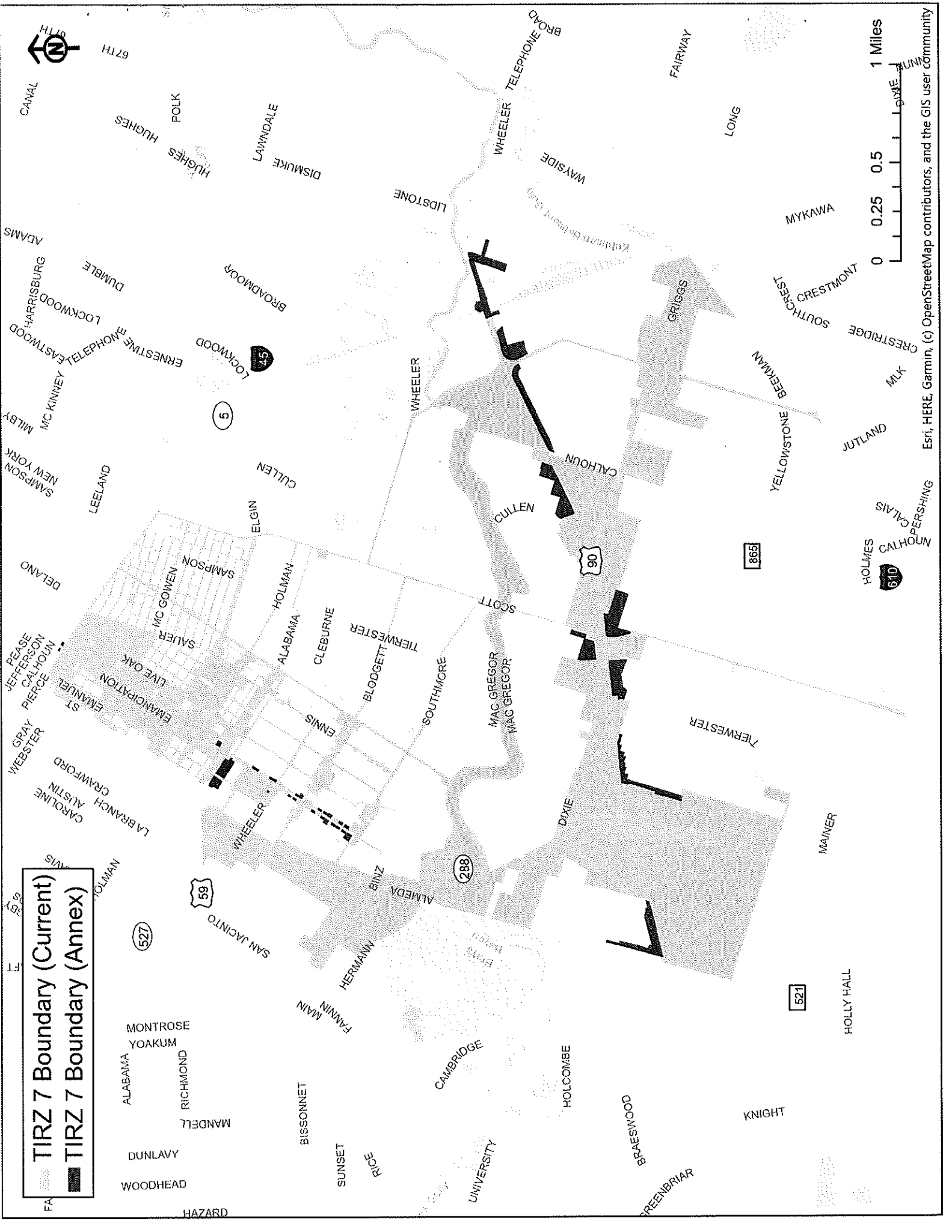
Lot 37 of 37 being a 0.0574 acre lot located at east corner of Wheeler Street and Bastrop Street and described as HOLMAN OUTLOT 65 TR 4 BLK 6 (2301 WHEELER ST, HCAD NUM: 0192680000003) BEGINNING at intersection of north right-of-way line of Wheeler St and east right-of-way line of Bastrop St, THENCE, northeast by north to north corner of said 0.0574 acre lot; THENCE, southeast by south to east corner of said 0.0574 acre lot; THENCE, southwest by south to south corner of said 0.0574 acre lot; THENCE, northwest by north to west corner of said 0.0574 acre lot, same being point of beginning of 0.0574 acre lot 37 of 37.

EXHIBIT "B"

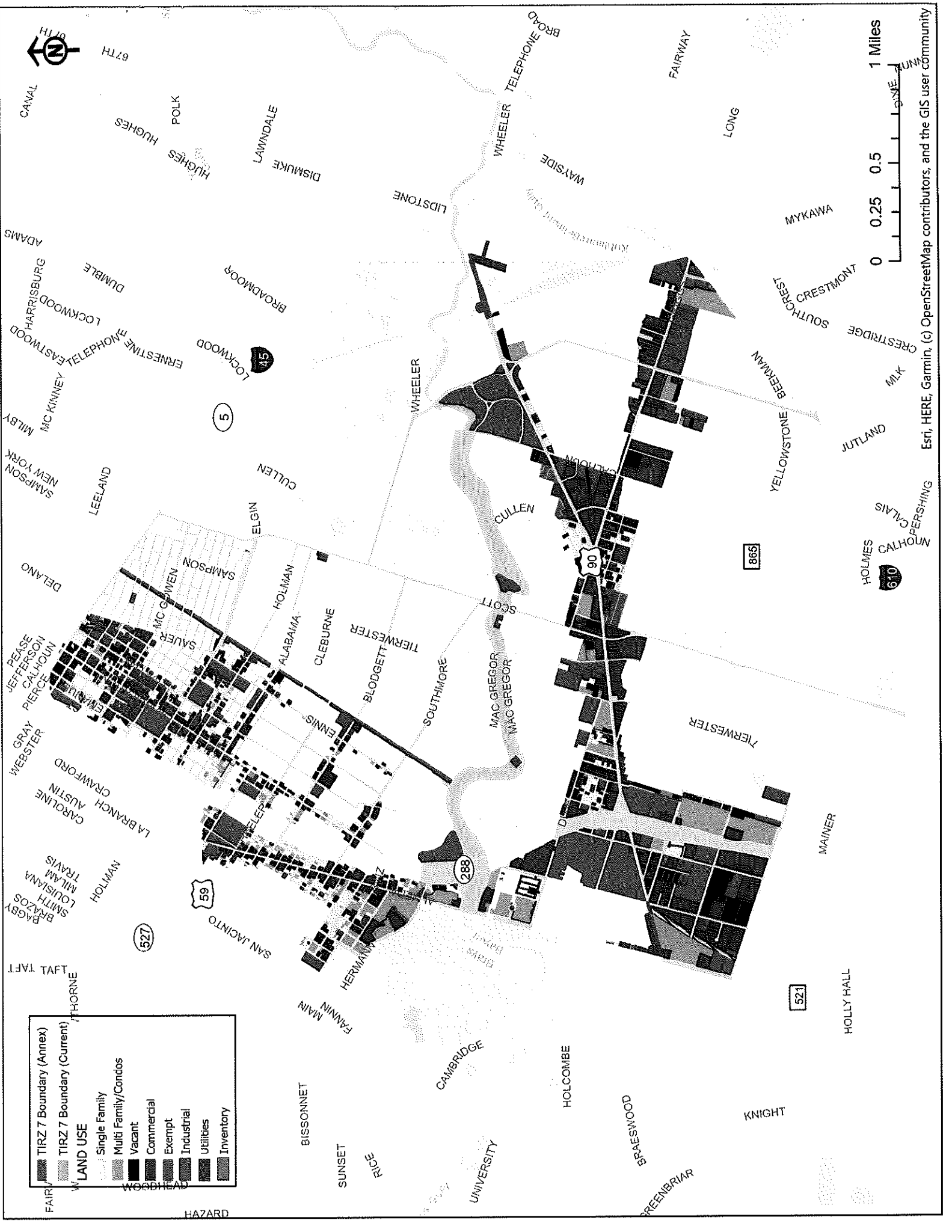
**MAPS OF ANNEXATION AREA AND BOUNDARIES AS ENLARGED
REINVESTMENT ZONE NUMBER SEVEN, CITY OF HOUSTON, TEXAS
(OLD SPANISH TRAIL/ALMEDA CORRIDORS ZONE)**

(see two maps immediately following this page)

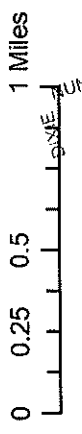
 TIRZ 7 Boundary (Current)
 TIRZ 7 Boundary (Annex)



Esri, HERE, Garmin, (c) OpenStreetMap contributors, and the GIS user community



	TIRZ 7 Boundary (Annex)
	TIRZ 7 Boundary (Current)
LAND USE	
	Single Family
	Multi Family/Condos
	Vacant
	Commercial
	Exempt
	Industrial
	Utilities
	Inventory



Esri, HERE, Garmin, (c) OpenStreetMap contributors, and the GIS user community