

**Texas HIV  
Surveillance Report**



The Texas HIV Surveillance Report is an annual report generated by:

Texas Department of State Health Services  
TB/HIV/STD Epidemiology and Surveillance Branch, MC 1873  
P.O. Box 149347  
Austin, Texas 78714  
(512) 533-3000

#### **Important Notes on the Data:**

- This report describes HIV infection and AIDS cases reported to the Texas Department of State Health Services Surveillance Program that were diagnosed through December 31, 2010 and reported to the system by June 30, 2011, the cut-off date for the creation of the current HIV analysis data file. Data are presented by year of diagnosis rather than year of report.
- **HIV Infection** - Counted among HIV infection case numbers are all HIV cases regardless of disease status (HIV-only or AIDS) at diagnosis.
- **AIDS** - The AIDS data in this report include all cases who were diagnosed with AIDS in the given time frame regardless of whether they were previously diagnosed as HIV-only or if they were a newly diagnosed and had already met the AIDS case definition.
- **People Living with HIV** - These data represent the cumulative number of people living with HIV in Texas who are not known to be deceased. In terms of geography, cases are listed by residence at HIV or AIDS diagnosis. In early 2011, all Texas HIV cases were matched against two national death indices and many deaths not previously recorded in the surveillance system were discovered. These were not necessarily deaths due to HIV, nor were they deaths that occurred in any one time frame. Consequently, the number of people living with HIV in Texas is slightly lower than was listed in previous reports. Texas' HIV data is constantly evolving and improving, therefore the most recent report or analysis should be considered the most accurate.
- **Cumulative HIV Diagnoses** - Cumulative data represent all cases in the Texas HIV reporting system, living or deceased, by residence at HIV or AIDS diagnosis.
- A substantial number of cases of HIV infection and AIDS are reported without an identified risk factor, therefore multiple imputation is used to assign a risk factor for these cases using an algorithm provided by the Centers for Disease Control and Prevention. In this report, multiple imputation has been used in the tables showing estimated transmission categories for diagnoses among adults and adolescents.
- Population numbers used to calculate rates are provided by the Texas State Data Center, Population Estimates and Projections Program and are current as of July 31, 2011.

# TABLE OF CONTENTS

Table of Contents.....	3
Reference: Terms and Resources .....	4
<b>HIV Infection</b>	
• HIV Infection Diagnoses by County of Residence, 2003-2010 .....	5
• <b>Graph:</b> HIV Infection Cases and Case Rates by Year of Diagnosis, 2003-2010 .....	9
• HIV Infection Diagnoses by Sex, Race/Ethnicity and Age Group, 2003-2010 .....	9
• HIV Infection Diagnoses by Age Group, Race/Ethnicity and Sex, 2010 .....	10
• <b>Graph:</b> Texas HIV Infection Case Rates by Race and Year of Diagnosis, 2003-2010....	10
• <b>Graph:</b> Texas HIV Infection Case Rates by Sex and Year of Diagnosis, 2003-2010 .....	11
• <b>Graph:</b> Texas HIV Infection Case Rates by Age Group and Year of Diagnosis, 2010 ....	11
<b>AIDS</b>	
• AIDS Diagnoses by County of Residence, 2003-2010 .....	12
• <b>Graph:</b> AIDS Cases and Case Rates by Year of Diagnosis, 2003-2010 .....	16
• AIDS Diagnoses by Age Group, Race/Ethnicity and Sex, 2010 .....	16
• AIDS Diagnoses by Sex, Race/Ethnicity and Age Group, 2003-2010 .....	17
• <b>Graph:</b> Texas AIDS Case Rates by Race and Year of Diagnosis, 2003-2010 .....	17
• <b>Graph:</b> Texas AIDS Case Rates by Sex and Year of Diagnosis, 2003-2010 .....	18
• <b>Graph:</b> Texas AIDS Case Rates by Age Group and Year of Diagnosis, 2010 .....	18
<b>People Living with HIV and Cumulative Diagnoses</b>	
• People Living with HIV and Cumulative Diagnoses by County of Residence .....	19
• People Living with HIV by Sex, Race/Ethnicity and Age Group .....	21
• People Living with HIV by Age Group, Race/Ethnicity and Sex.....	21
<b>Additional Geographic Breakdowns and Rankings</b>	
• HIV Infection and AIDS Diagnoses by Public Health Region, 2010.....	22
• HIV Infection and AIDS Diagnoses by City of Residence, 2010 .....	23
• 25 Counties with the Highest Case Numbers, 2010 .....	24
• 25 Counties with the Highest Case Rates, 2010.....	24
• HIV Infection and AIDS Diagnoses by Transmission Category, 2010.....	25
• People Living with HIV and Cumulative Diagnoses by Transmission Category, 2010.....	25
• HIV Infection and AIDS Diagnoses by National Origin, 2010.....	26

### Definitions:

HIV infection and AIDS are defined, for surveillance purposes, by the Centers for Disease Control and Prevention of the United States Public Health Service. The publication designating the most current definition may be found at:

<http://www.cdc.gov/hiv/topics/surveillance/resources/guidelines/#surveillance>

### Reporting Rules:

The rules and regulations for reporting sexually transmitted diseases have been adopted in the Texas Administrative Code, Chapter 97. The provisions for this chapter are issued under the Communicable Disease Prevention and Control Act, Health and Safety Code, Chapter 81, which provides the Board of Health with the authority to adopt rules concerning the reporting of communicable diseases; and §12.001, which provides the Texas Board of Health with the authority to adopt rules for the performance of every duty imposed by law on the Texas Board of Health, the Texas Department of State Health Services, and the Commissioner of Health. A copy of the rules can be obtained from the Texas Department of State Health Services at:

<http://www.dshs.state.tx.us/hivstd/healthcare/reporting.shtm>

The *Texas HIV Surveillance Report* and the *Texas HIV Quarterly Report* can be obtained at:

<http://www.dshs.state.tx.us/hivstd/reports/default.shtm>

Information on how to report HIV/AIDS and STD cases can be obtained by calling your local or regional health department, or by calling 1-800-705-8868.

## HIV Infection Diagnoses by County of Residence, 2003-2010

County	2003		2004		2005		2006		2007		2008		2009		2010	
	Cases	Rate*	Cases	Rate*	Cases	Rate*	Cases	Rate*	Cases	Rate*	Cases	Rate*	Cases	Rate*	Cases	Rate*
Anderson	7	12.6	10	17.8	5	8.9	4	7.1	2	3.5	3	5.3	11	19.4	9	15.6
Andrews	0	0.0	0	0.0	0	0.0	0	0.0	0	0.0	1	7.2	3	21.2	2	14.0
Angelina	6	7.4	10	12.2	11	13.4	9	10.9	4	4.8	5	6.0	9	10.7	13	15.3
Aransas	2	8.4	1	4.2	0	0.0	1	4.0	2	7.9	3	11.8	0	0.0	3	10.9
Archer	0	0.0	0	0.0	0	0.0	0	0.0	0	0.0	0	0.0	0	0.0	0	0.0
Armstrong	0	0.0	0	0.0	0	0.0	0	0.0	0	0.0	0	0.0	0	0.0	0	0.0
Atascosa	2	4.9	1	2.3	3	7.2	2	4.7	2	4.6	2	4.6	5	11.2	2	4.4
Austin	0	0.0	1	3.9	4	15.3	1	3.7	3	11.1	5	18.3	4	14.6	3	10.4
Bailey	0	0.0	0	0.0	0	0.0	0	0.0	0	0.0	0	0.0	0	0.0	0	0.0
Bandera	0	0.0	1	5.1	2	10.2	0	0.0	0	0.0	3	14.8	2	9.6	1	4.7
Bastrop	4	6.0	10	14.6	1	1.4	4	5.6	7	9.7	8	10.9	3	4.0	13	15.9
Baylor	0	0.0	1	24.7	0	0.0	0	0.0	0	0.0	0	0.0	0	0.0	0	0.0
Bee	2	6.1	4	12.0	3	9.0	2	6.0	0	0.0	0	0.0	1	3.0	4	11.7
Bell	21	8.4	24	9.5	22	8.4	18	6.7	27	9.8	34	12.0	45	15.8	49	16.8
Bexar	277	18.9	306	20.6	315	20.9	230	14.8	270	17.1	282	17.4	315	19.1	253	15.5
Blanco	0	0.0	0	0.0	0	0.0	0	0.0	0	0.0	0	0.0	0	0.0	1	9.7
Borden	0	0.0	0	0.0	0	0.0	0	0.0	0	0.0	0	0.0	0	0.0	1	130.2
Bosque	0	0.0	2	11.2	1	5.5	1	5.5	1	5.4	0	0.0	0	0.0	0	0.0
Bowie	7	7.7	8	8.7	12	13.0	7	7.5	2	2.1	3	3.2	8	8.5	13	14.0
Brazoria	19	7.2	15	5.5	16	5.8	31	10.8	20	6.8	21	7.0	30	9.7	29	9.1
Brazos	25	15.5	12	7.4	15	9.3	22	13.2	24	14.2	27	15.5	17	9.4	13	7.4
Brewster	1	10.8	0	0.0	0	0.0	0	0.0	0	0.0	0	0.0	0	0.0	1	10.5
Briscoe	0	0.0	0	0.0	0	0.0	0	0.0	0	0.0	0	0.0	0	0.0	0	0.0
Brooks	0	0.0	1	12.7	1	13.1	1	12.9	0	0.0	0	0.0	0	0.0	1	12.7
Brown	6	15.7	3	7.8	5	13.1	3	7.8	0	0.0	4	10.3	1	2.6	0	0.0
Burleson	1	5.7	0	0.0	0	0.0	0	0.0	2	11.0	1	5.5	4	22.0	1	5.4
Burnet	1	2.7	5	13.1	2	5.1	2	4.9	2	4.7	2	4.6	2	4.5	2	4.2
Caldwell	1	2.9	4	11.3	3	8.5	0	0.0	3	8.4	4	10.9	4	10.7	7	18.1
Calhoun	1	4.8	1	4.8	0	0.0	0	0.0	1	4.8	1	4.8	0	0.0	4	17.2
Callahan	0	0.0	2	15.0	2	14.8	0	0.0	0	0.0	0	0.0	2	14.4	1	6.9
Cameron	56	15.3	35	9.4	42	11.1	37	9.5	43	11.0	45	11.4	46	11.6	52	12.5
Camp	1	8.1	0	0.0	1	7.9	1	7.9	0	0.0	0	0.0	1	7.7	0	0.0
Carson	0	0.0	0	0.0	0	0.0	0	0.0	0	0.0	0	0.0	0	0.0	0	0.0
Cass	1	3.3	2	6.6	4	13.2	0	0.0	1	3.3	1	3.3	0	0.0	0	0.0
Castro	1	12.8	0	0.0	0	0.0	0	0.0	0	0.0	0	0.0	0	0.0	0	0.0
Chambers	1	3.5	1	3.4	2	6.3	1	3.1	2	6.1	0	0.0	3	8.8	1	2.8
Cherokee	3	6.3	8	16.6	1	2.1	2	4.1	6	12.3	7	14.2	6	12.1	5	10.0
Childress	0	0.0	0	0.0	0	0.0	0	0.0	0	0.0	0	0.0	0	0.0	2	25.2
Clay	0	0.0	3	26.4	0	0.0	0	0.0	0	0.0	1	9.0	0	0.0	1	8.9
Cochran	0	0.0	0	0.0	0	0.0	0	0.0	0	0.0	0	0.0	0	0.0	0	0.0
Coke	0	0.0	0	0.0	1	25.2	0	0.0	0	0.0	0	0.0	0	0.0	0	0.0
Coleman	1	11.0	0	0.0	0	0.0	1	11.3	0	0.0	0	0.0	0	0.0	0	0.0
Collin	66	11.1	81	13.0	74	11.3	69	9.9	94	12.9	75	9.9	93	11.8	91	10.8
Collingsworth	0	0.0	0	0.0	0	0.0	1	34.1	0	0.0	0	0.0	0	0.0	0	0.0
Colorado	1	4.8	2	9.4	2	9.5	0	0.0	3	13.8	1	4.6	3	13.8	1	4.5
Comal	5	5.7	4	4.4	4	4.2	8	7.8	5	4.7	6	5.4	8	7.0	7	5.8
Comanche	0	0.0	0	0.0	0	0.0	0	0.0	0	0.0	0	0.0	1	7.0	0	0.0
Concho	2	51.0	1	25.7	1	26.0	0	0.0	0	0.0	0	0.0	0	0.0	3	77.9
Cooke	2	5.3	0	0.0	3	7.7	1	2.5	0	0.0	0	0.0	0	0.0	1	2.4
Coryell	6	8.0	4	5.4	1	1.3	5	6.6	2	2.6	7	9.2	5	6.6	4	4.9
Cottle	0	0.0	0	0.0	0	0.0	0	0.0	0	0.0	0	0.0	0	0.0	0	0.0
Crane	0	0.0	0	0.0	0	0.0	0	0.0	0	0.0	0	0.0	0	0.0	0	0.0
Crockett	0	0.0	0	0.0	0	0.0	0	0.0	0	0.0	0	0.0	0	0.0	0	0.0
Crosby	2	29.7	0	0.0	0	0.0	0	0.0	0	0.0	0	0.0	0	0.0	1	15.3
Culberson	0	0.0	0	0.0	0	0.0	0	0.0	0	0.0	0	0.0	0	0.0	0	0.0
Dallam	0	0.0	0	0.0	0	0.0	0	0.0	1	16.0	0	0.0	0	0.0	0	0.0
Dallas	1,050	46.0	1,058	46.2	1,020	44.3	831	35.5	808	34.2	780	32.7	836	34.4	908	37.3
Dawson	0	0.0	0	0.0	0	0.0	0	0.0	0	0.0	1	7.2	0	0.0	0	0.0
Deaf Smith	0	0.0	1	5.4	0	0.0	2	10.7	3	16.1	1	5.3	1	5.3	0	0.0
Delta	0	0.0	0	0.0	0	0.0	0	0.0	0	0.0	0	0.0	0	0.0	0	0.0
Denton	60	11.7	61	11.4	62	11.1	39	6.6	61	9.9	48	7.5	52	7.9	51	7.2
DeWitt	1	4.9	1	4.9	0	0.0	0	0.0	1	4.9	0	0.0	3	14.9	1	4.9
Dickens	0	0.0	0	0.0	0	0.0	0	0.0	0	0.0	0	0.0	1	37.8	0	0.0
Dimmit	0	0.0	0	0.0	2	19.8	0	0.0	0	0.0	2	20.1	0	0.0	0	0.0

\* Rates represent cases per 100,000 population.

## HIV Infection Diagnoses by County of Residence, 2003-2010

County	2003		2004		2005		2006		2007		2008		2009		2010	
	Cases	Rate*	Cases	Rate*	Cases	Rate*	Cases	Rate*	Cases	Rate*	Cases	Rate*	Cases	Rate*	Cases	Rate*
Donley	0	0.0	0	0.0	0	0.0	0	0.0	0	0.0	1	25.3	0	0.0	0	0.0
Duval	0	0.0	0	0.0	0	0.0	0	0.0	1	8.1	0	0.0	0	0.0	1	8.3
Eastland	1	5.5	0	0.0	0	0.0	1	5.4	1	5.5	0	0.0	0	0.0	0	0.0
Ector	8	6.5	8	6.4	12	9.6	10	7.9	6	4.7	15	11.5	8	6.0	11	8.3
Edwards	0	0.0	0	0.0	0	0.0	0	0.0	0	0.0	1	52.1	1	49.6	1	45.2
Ellis	11	8.8	11	8.5	11	8.3	8	5.8	8	5.6	17	11.5	7	4.6	11	6.9
El Paso	103	14.6	133	18.6	107	14.7	76	10.2	111	14.8	77	10.3	80	10.6	117	15.1
Erath	0	0.0	1	3.0	0	0.0	2	5.8	2	5.7	0	0.0	0	0.0	0	0.0
Falls	0	0.0	0	0.0	1	5.5	1	5.5	1	5.6	1	5.7	1	5.7	0	0.0
Fannin	3	9.2	3	9.0	1	3.0	2	5.9	0	0.0	1	2.9	0	0.0	2	5.8
Fayette	0	0.0	1	4.3	1	4.3	0	0.0	0	0.0	2	8.3	0	0.0	1	4.0
Fisher	0	0.0	0	0.0	0	0.0	0	0.0	0	0.0	1	24.1	0	0.0	0	0.0
Floyd	0	0.0	0	0.0	0	0.0	0	0.0	0	0.0	0	0.0	1	13.9	0	0.0
Foard	0	0.0	0	0.0	0	0.0	0	0.0	0	0.0	0	0.0	1	69.5	0	0.0
Fort Bend	36	8.8	41	9.5	43	9.4	48	9.9	39	7.6	54	10.1	62	11.1	45	7.8
Franklin	1	10.4	0	0.0	0	0.0	0	0.0	0	0.0	0	0.0	0	0.0	3	27.4
Freestone	2	10.6	1	5.3	3	15.7	1	5.2	2	10.2	1	5.1	1	5.0	0	0.0
Frio	0	0.0	1	6.2	0	0.0	5	30.6	1	6.1	1	6.1	7	42.8	9	50.1
Gaines	0	0.0	0	0.0	0	0.0	0	0.0	1	6.6	0	0.0	0	0.0	0	0.0
Galveston	57	21.5	50	18.5	39	14.2	40	14.2	39	13.7	37	12.8	57	19.8	48	16.3
Garza	3	58.8	1	19.9	2	40.4	0	0.0	4	79.0	1	19.7	5	98.6	0	0.0
Gillespie	0	0.0	0	0.0	0	0.0	0	0.0	1	4.1	0	0.0	1	4.0	0	0.0
Glasscock	0	0.0	0	0.0	0	0.0	0	0.0	0	0.0	0	0.0	0	0.0	0	0.0
Goliad	0	0.0	0	0.0	0	0.0	1	13.9	0	0.0	0	0.0	0	0.0	0	0.0
Gonzales	0	0.0	2	10.2	0	0.0	0	0.0	0	0.0	0	0.0	0	0.0	0	0.0
Gray	1	4.5	0	0.0	1	4.5	2	8.9	0	0.0	2	8.8	0	0.0	0	0.0
Grayson	4	3.5	4	3.4	2	1.7	7	5.9	7	5.9	3	2.5	4	3.3	6	5.0
Gregg	21	18.5	34	29.7	18	15.7	18	15.3	31	26.2	16	13.5	31	26.0	25	20.3
Grimes	2	8.2	4	16.2	1	4.0	5	20.2	3	12.1	2	7.9	5	19.5	1	3.8
Guadalupe	4	4.1	8	7.8	4	3.8	2	1.8	2	1.7	4	3.4	6	5.0	4	3.1
Hale	1	2.8	3	8.3	4	11.1	1	2.8	2	5.6	0	0.0	1	2.8	1	2.7
Hall	1	25.6	0	0.0	0	0.0	0	0.0	1	27.9	0	0.0	0	0.0	0	0.0
Hamilton	1	12.0	0	0.0	0	0.0	0	0.0	0	0.0	0	0.0	0	0.0	1	11.2
Hansford	0	0.0	0	0.0	0	0.0	0	0.0	0	0.0	0	0.0	0	0.0	0	0.0
Hardeman	0	0.0	1	21.4	0	0.0	0	0.0	0	0.0	0	0.0	0	0.0	0	0.0
Hardin	4	8.1	3	6.0	3	6.0	2	4.0	2	3.9	4	7.7	5	9.4	5	9.6
Harris	1,120	31.2	1,124	30.8	1,116	30.2	1,145	29.9	1,160	29.8	1,237	31.2	1,215	30.0	1,234	30.1
Harrison	10	16.0	5	8.0	4	6.3	5	7.8	9	14.0	6	9.3	9	13.9	10	14.8
Hartley	0	0.0	0	0.0	0	0.0	0	0.0	0	0.0	0	0.0	0	0.0	0	0.0
Haskell	1	17.0	0	0.0	3	53.2	2	35.3	0	0.0	1	18.0	1	17.7	0	0.0
Hays	3	2.6	8	6.6	11	8.7	3	2.2	14	10.0	10	6.8	7	4.5	3	1.8
Hemphill	0	0.0	0	0.0	0	0.0	0	0.0	0	0.0	0	0.0	0	0.0	0	0.0
Henderson	5	6.6	4	5.1	5	6.4	3	3.8	4	5.1	6	7.6	5	6.3	4	4.9
Hidalgo	55	8.6	63	9.6	71	10.5	73	10.3	65	9.0	63	8.7	74	10.0	82	10.3
Hill	3	8.9	5	14.6	5	14.6	1	2.9	2	5.7	2	5.6	2	5.6	2	5.4
Hockley	2	8.8	0	0.0	0	0.0	0	0.0	0	0.0	0	0.0	3	13.3	2	8.4
Hood	6	13.5	2	4.3	3	6.3	1	2.0	2	4.0	4	7.9	5	9.7	2	3.7
Hopkins	2	6.2	1	3.0	5	15.0	0	0.0	1	2.9	6	17.6	4	11.6	2	5.8
Houston	4	17.0	5	21.4	5	21.4	3	12.7	6	25.4	6	25.3	7	29.6	2	8.2
Howard	1	3.0	4	12.1	8	24.2	2	6.1	4	12.2	2	6.1	2	6.0	11	32.8
Hudspeth	0	0.0	0	0.0	0	0.0	0	0.0	1	28.9	0	0.0	0	0.0	1	26.2
Hunt	1	1.2	8	9.8	10	12.1	11	13.2	5	6.0	10	11.9	6	7.1	2	2.2
Hutchinson	1	4.3	0	0.0	3	13.4	1	4.4	0	0.0	1	4.4	1	4.4	1	4.2
Irion	0	0.0	0	0.0	0	0.0	0	0.0	1	58.0	0	0.0	0	0.0	0	0.0
Jack	0	0.0	0	0.0	0	0.0	0	0.0	0	0.0	0	0.0	0	0.0	0	0.0
Jackson	0	0.0	2	13.8	0	0.0	0	0.0	0	0.0	0	0.0	0	0.0	0	0.0
Jasper	1	2.8	0	0.0	1	2.8	0	0.0	3	8.5	4	11.3	0	0.0	2	5.6
Jeff Davis	0	0.0	0	0.0	0	0.0	0	0.0	0	0.0	1	37.9	0	0.0	0	0.0
Jefferson	57	22.7	57	22.8	59	23.9	43	17.5	57	23.2	67	27.2	69	28.0	59	24.3
Jim Hogg	0	0.0	0	0.0	1	19.7	1	19.6	0	0.0	0	0.0	0	0.0	0	0.0
Jim Wells	0	0.0	2	5.0	1	2.5	0	0.0	2	4.8	1	2.4	1	2.4	0	0.0
Johnson	12	8.6	4	2.8	16	10.9	9	6.0	5	3.2	9	5.8	6	3.8	10	5.9
Jones	1	4.9	1	4.9	0	0.0	3	14.7	1	4.9	0	0.0	4	19.8	2	9.6
Karnes	0	0.0	0	0.0	0	0.0	0	0.0	0	0.0	3	19.5	1	6.5	2	11.9

\* Rates represent cases per 100,000 population.

# HIV Infection Diagnoses by County of Residence, 2003-2010

County	2003		2004		2005		2006		2007		2008		2009		2010	
	Cases	Rate*	Cases	Rate*	Cases	Rate*	Cases	Rate*	Cases	Rate*	Cases	Rate*	Cases	Rate*	Cases	Rate*
Kaufman	11	13.5	12	14.1	7	7.8	15	16.0	9	9.3	9	9.0	5	4.9	11	10.2
Kendall	1	3.8	2	7.2	1	3.5	2	6.5	3	9.4	1	3.0	2	5.9	2	5.7
Kenedy	0	0.0	0	0.0	0	0.0	0	0.0	0	0.0	0	0.0	0	0.0	0	0.0
Kent	0	0.0	0	0.0	0	0.0	0	0.0	0	0.0	0	0.0	0	0.0	0	0.0
Kerr	2	4.4	0	0.0	0	0.0	2	4.2	1	2.1	1	2.1	3	6.2	1	2.1
Kimble	0	0.0	0	0.0	0	0.0	0	0.0	0	0.0	0	0.0	1	21.6	0	0.0
King	0	0.0	0	0.0	0	0.0	0	0.0	0	0.0	0	0.0	0	0.0	0	0.0
Kinney	1	29.9	0	0.0	0	0.0	0	0.0	0	0.0	0	0.0	1	30.1	1	29.0
Kleberg	1	3.2	1	3.1	0	0.0	0	0.0	6	19.8	0	0.0	1	3.3	5	15.6
Knox	1	24.4	0	0.0	0	0.0	0	0.0	0	0.0	0	0.0	0	0.0	0	0.0
Lamar	8	16.2	5	10.0	1	2.0	3	6.0	3	6.0	0	0.0	5	10.0	4	7.9
Lamb	1	6.8	1	6.8	0	0.0	0	0.0	0	0.0	0	0.0	0	0.0	0	0.0
Lampasas	1	5.2	2	9.9	0	0.0	0	0.0	0	0.0	0	0.0	0	0.0	0	0.0
La Salle	0	0.0	0	0.0	0	0.0	0	0.0	0	0.0	1	16.8	3	49.7	0	0.0
Lavaca	0	0.0	3	15.4	2	10.3	1	5.2	0	0.0	0	0.0	0	0.0	1	5.1
Lee	3	18.2	4	24.0	1	6.0	0	0.0	0	0.0	1	5.8	0	0.0	0	0.0
Leon	1	6.2	0	0.0	1	6.2	0	0.0	2	12.4	1	6.0	1	5.9	1	5.9
Liberty	9	12.0	9	11.8	4	5.2	4	5.2	3	3.9	10	12.9	4	5.1	9	11.0
Limestone	1	4.5	3	13.3	0	0.0	1	4.5	2	9.0	0	0.0	1	4.4	2	8.6
Lipscomb	0	0.0	0	0.0	0	0.0	0	0.0	0	0.0	0	0.0	0	0.0	0	0.0
Live Oak	0	0.0	0	0.0	0	0.0	0	0.0	1	8.3	0	0.0	3	24.6	0	0.0
Llano	2	11.0	0	0.0	1	5.4	0	0.0	1	5.2	0	0.0	0	0.0	0	0.0
Loving	0	0.0	0	0.0	0	0.0	0	0.0	0	0.0	0	0.0	0	0.0	0	0.0
Lubbock	31	12.4	17	6.8	17	6.8	12	4.7	12	4.6	14	5.3	23	8.5	19	7.1
Lynn	0	0.0	0	0.0	0	0.0	0	0.0	0	0.0	1	16.7	0	0.0	0	0.0
McCulloch	0	0.0	0	0.0	0	0.0	1	12.3	0	0.0	0	0.0	0	0.0	1	11.5
McLennan	20	9.1	16	7.3	29	13.0	24	10.7	22	9.7	19	8.3	33	14.3	22	9.4
McMullen	0	0.0	0	0.0	0	0.0	0	0.0	0	0.0	0	0.0	0	0.0	0	0.0
Madison	0	0.0	4	30.0	0	0.0	1	7.4	2	14.6	0	0.0	0	0.0	6	41.4
Marion	1	9.3	2	18.2	0	0.0	0	0.0	2	18.7	1	9.4	1	9.4	4	36.3
Martin	0	0.0	0	0.0	0	0.0	0	0.0	0	0.0	0	0.0	1	19.9	0	0.0
Mason	0	0.0	1	25.6	0	0.0	0	0.0	0	0.0	0	0.0	0	0.0	0	0.0
Matagorda	5	13.2	2	5.3	0	0.0	1	2.7	5	13.5	4	10.7	5	13.4	4	10.3
Maverick	3	6.0	1	2.0	3	5.8	3	5.8	3	5.7	3	5.7	2	3.7	8	14.5
Medina	2	4.8	2	4.7	3	7.0	0	0.0	1	2.3	1	2.3	1	2.2	2	4.4
Menard	0	0.0	1	42.3	0	0.0	0	0.0	0	0.0	0	0.0	0	0.0	0	0.0
Midland	14	11.8	5	4.2	9	7.5	8	6.4	3	2.4	7	5.4	7	5.3	9	6.9
Milam	0	0.0	0	0.0	2	7.8	2	7.8	5	19.6	2	7.8	1	3.9	1	3.8
Mills	0	0.0	0	0.0	0	0.0	0	0.0	0	0.0	0	0.0	0	0.0	0	0.0
Mitchell	0	0.0	0	0.0	2	20.9	0	0.0	0	0.0	1	10.5	0	0.0	0	0.0
Montague	2	10.2	1	5.1	0	0.0	0	0.0	0	0.0	0	0.0	1	5.0	0	0.0
Montgomery	35	10.2	25	7.0	13	3.5	24	6.0	24	5.8	27	6.3	30	6.7	24	5.0
Moore	2	9.9	2	9.9	0	0.0	0	0.0	1	5.0	1	5.0	0	0.0	0	0.0
Morris	3	23.4	0	0.0	1	7.7	0	0.0	1	7.6	2	15.3	0	0.0	2	14.8
Motley	0	0.0	0	0.0	0	0.0	0	0.0	0	0.0	0	0.0	0	0.0	0	0.0
Nacogdoches	6	9.9	4	6.5	7	11.4	4	6.4	8	12.8	13	20.7	9	14.1	4	6.2
Navarro	6	12.6	4	8.4	11	22.9	5	10.3	5	10.2	10	20.3	5	10.1	8	15.5
Newton	0	0.0	0	0.0	0	0.0	1	7.0	0	0.0	1	7.0	0	0.0	1	6.7
Nolan	0	0.0	0	0.0	1	6.6	1	6.6	1	6.8	1	6.7	0	0.0	0	0.0
Nueces	24	7.6	36	11.4	25	7.9	32	10.0	22	6.9	21	6.5	23	7.1	22	6.8
Ochiltree	0	0.0	0	0.0	1	10.9	0	0.0	0	0.0	0	0.0	0	0.0	0	0.0
Oldham	0	0.0	0	0.0	0	0.0	0	0.0	0	0.0	0	0.0	0	0.0	0	0.0
Orange	4	4.7	4	4.7	6	7.1	2	2.4	7	8.3	6	7.1	8	9.5	9	10.6
Palo Pinto	1	3.7	0	0.0	0	0.0	1	3.6	2	7.1	2	7.2	0	0.0	0	0.0
Panola	2	8.8	2	8.8	1	4.3	2	8.6	1	4.3	0	0.0	2	8.6	1	4.1
Parker	4	4.0	6	5.9	4	3.9	6	5.6	3	2.8	6	5.4	6	5.2	6	5.1
Parmer	0	0.0	0	0.0	0	0.0	1	10.2	1	10.3	3	31.1	1	10.3	0	0.0
Pecos	1	6.2	0	0.0	0	0.0	0	0.0	0	0.0	0	0.0	0	0.0	0	0.0
Polk	3	6.9	7	15.5	2	4.4	6	12.9	4	8.6	2	4.3	6	13.0	4	8.0
Potter	13	11.1	14	11.8	17	14.2	12	9.9	11	9.0	13	10.7	9	7.4	10	7.9
Presidio	0	0.0	0	0.0	1	12.6	0	0.0	1	12.3	0	0.0	0	0.0	0	0.0
Rains	0	0.0	1	9.7	0	0.0	1	9.4	0	0.0	0	0.0	0	0.0	0	0.0
Randall	4	3.7	3	2.7	4	3.6	2	1.8	4	3.5	2	1.7	5	4.2	2	1.7
Reagan	0	0.0	0	0.0	0	0.0	0	0.0	0	0.0	0	0.0	0	0.0	0	0.0

\* Rates represent cases per 100,000 population.

# HIV Infection Diagnoses by County of Residence, 2003-2010

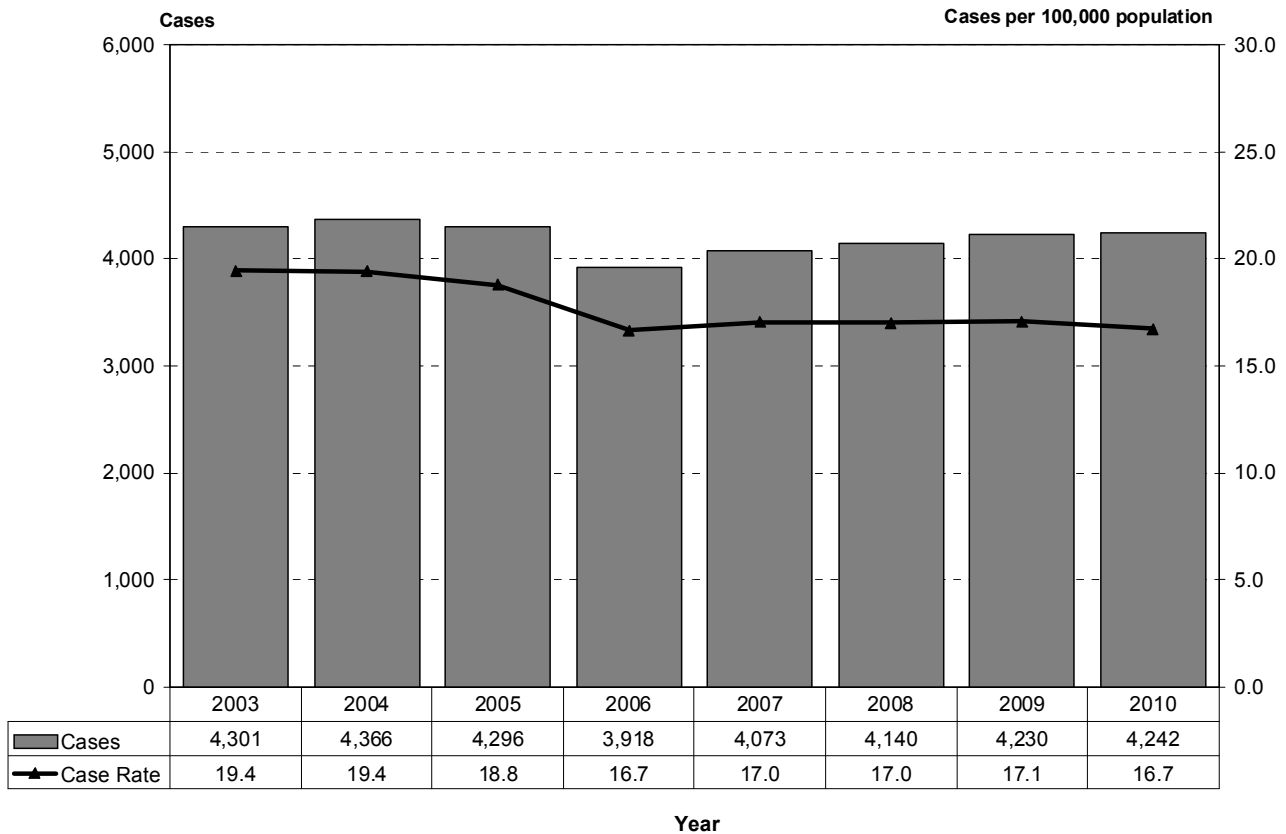
County	2003		2004		2005		2006		2007		2008		2009		2010	
	Cases	Rate*	Cases	Rate*	Cases	Rate*	Cases	Rate*	Cases	Rate*	Cases	Rate*	Cases	Rate*	Cases	Rate*
Real	0	0.0	0	0.0	0	0.0	0	0.0	0	0.0	0	0.0	0	0.0	0	0.0
Red River	0	0.0	0	0.0	0	0.0	0	0.0	0	0.0	0	0.0	0	0.0	2	13.9
Reeves	0	0.0	0	0.0	1	8.6	4	34.5	2	17.4	2	17.6	4	34.9	9	81.3
Refugio	0	0.0	0	0.0	0	0.0	0	0.0	0	0.0	0	0.0	0	0.0	2	28.1
Roberts	0	0.0	0	0.0	0	0.0	0	0.0	0	0.0	0	0.0	0	0.0	0	0.0
Robertson	4	25.1	1	6.2	2	12.3	2	12.4	2	12.5	0	0.0	1	6.3	1	5.9
Rockwall	1	1.8	7	12.1	2	3.2	3	4.3	2	2.8	0	0.0	4	4.9	6	7.0
Runnels	0	0.0	2	18.0	0	0.0	0	0.0	1	9.2	0	0.0	0	0.0	0	0.0
Rusk	3	6.3	3	6.2	0	0.0	4	8.3	5	10.4	4	8.3	1	2.0	1	2.0
Sabine	1	9.9	0	0.0	2	19.2	0	0.0	2	19.2	0	0.0	2	19.1	1	9.2
San Augustine	0	0.0	0	0.0	0	0.0	1	10.8	0	0.0	1	11.1	1	11.1	0	0.0
San Jacinto	0	0.0	1	4.3	1	4.1	2	8.1	1	3.9	1	3.9	1	3.9	3	10.7
San Patricio	2	2.9	8	11.5	3	4.3	4	5.8	3	4.3	2	2.9	1	1.4	4	5.6
San Saba	0	0.0	0	0.0	0	0.0	0	0.0	0	0.0	0	0.0	0	0.0	0	0.0
Schleicher	0	0.0	0	0.0	0	0.0	0	0.0	0	0.0	0	0.0	0	0.0	0	0.0
Scurry	0	0.0	0	0.0	0	0.0	0	0.0	0	0.0	0	0.0	0	0.0	0	0.0
Shackelford	0	0.0	0	0.0	0	0.0	0	0.0	0	0.0	0	0.0	1	29.6	0	0.0
Shelby	5	19.7	0	0.0	2	7.9	2	7.8	6	23.3	1	3.8	0	0.0	0	0.0
Sherman	0	0.0	1	31.6	1	29.8	0	0.0	0	0.0	1	32.0	0	0.0	0	0.0
Smith	27	14.7	23	12.3	28	14.7	14	7.2	20	10.1	21	10.5	20	9.8	20	9.7
Somervell	0	0.0	0	0.0	0	0.0	0	0.0	0	0.0	1	12.3	1	12.2	0	0.0
Starr	7	12.2	0	0.0	9	14.7	2	3.2	0	0.0	1	1.6	0	0.0	1	1.5
Stephens	0	0.0	0	0.0	0	0.0	0	0.0	0	0.0	1	10.4	0	0.0	0	0.0
Sterling	0	0.0	0	0.0	0	0.0	0	0.0	0	0.0	0	0.0	0	0.0	0	0.0
Stonewall	0	0.0	0	0.0	0	0.0	0	0.0	0	0.0	0	0.0	0	0.0	0	0.0
Sutton	0	0.0	0	0.0	0	0.0	0	0.0	0	0.0	0	0.0	0	0.0	0	0.0
Swisher	0	0.0	2	25.2	0	0.0	0	0.0	0	0.0	0	0.0	0	0.0	0	0.0
Tarrant	238	15.3	254	16.0	258	15.9	238	14.3	226	13.3	262	15.0	260	14.6	227	12.4
Taylor	8	6.4	12	9.4	11	8.6	6	4.7	10	7.8	6	4.7	11	8.6	9	6.9
Terrell	0	0.0	0	0.0	0	0.0	0	0.0	0	0.0	0	0.0	0	0.0	0	0.0
Terry	1	8.1	0	0.0	0	0.0	0	0.0	0	0.0	2	16.4	0	0.0	0	0.0
Throckmorton	0	0.0	0	0.0	0	0.0	0	0.0	0	0.0	0	0.0	0	0.0	0	0.0
Titus	2	6.9	3	10.1	1	3.4	1	3.3	1	3.3	0	0.0	2	6.6	1	3.1
Tom Green	4	3.9	1	1.0	5	4.9	6	5.8	3	2.9	8	7.6	6	5.7	3	2.9
Travis	201	23.4	189	21.6	220	24.5	220	23.7	223	23.5	209	21.1	186	18.4	197	19.8
Trinity	1	7.2	5	34.9	1	7.0	1	7.0	3	21.0	0	0.0	1	7.0	2	13.2
Tyler	3	14.2	1	4.7	0	0.0	2	9.5	2	9.5	1	4.7	2	9.4	1	4.5
Upshur	1	2.8	0	0.0	1	2.7	2	5.4	4	10.7	1	2.7	7	18.4	2	5.2
Upton	0	0.0	0	0.0	1	32.4	0	0.0	0	0.0	0	0.0	0	0.0	1	31.8
Uvalde	2	7.7	1	3.8	0	0.0	0	0.0	1	3.9	2	7.8	1	3.8	0	0.0
Val Verde	3	6.5	1	2.1	0	0.0	2	4.2	2	4.2	0	0.0	1	2.1	3	6.0
Van Zandt	2	4.0	3	5.9	2	3.9	3	5.8	1	1.9	3	5.7	4	7.6	3	5.6
Victoria	5	5.9	8	9.4	2	2.3	2	2.3	5	5.8	4	4.6	5	5.7	6	6.7
Walker	26	41.1	11	17.4	8	12.6	5	7.8	7	10.9	6	9.3	8	12.4	7	10.7
Waller	2	5.6	4	11.0	6	16.4	5	13.0	7	18.1	7	18.1	6	15.5	1	2.4
Ward	0	0.0	0	0.0	0	0.0	0	0.0	0	0.0	0	0.0	0	0.0	0	0.0
Washington	0	0.0	1	3.2	0	0.0	1	3.1	1	3.1	3	9.2	4	12.1	3	9.0
Webb	22	10.2	15	6.8	23	10.1	30	12.8	33	13.9	31	13.0	11	4.6	27	10.5
Wharton	7	16.6	4	9.5	6	14.2	2	4.7	3	7.1	9	21.2	6	14.1	0	0.0
Wheeler	0	0.0	0	0.0	0	0.0	0	0.0	0	0.0	0	0.0	0	0.0	0	0.0
Wichita	4	3.1	10	7.8	9	7.0	4	3.1	5	3.8	8	6.1	11	8.2	8	6.3
Wilbarger	1	7.0	1	7.0	0	0.0	1	7.1	2	13.9	1	7.0	0	0.0	1	6.5
Willacy	2	9.7	1	4.8	2	9.7	3	14.4	0	0.0	8	38.1	4	19.1	5	22.7
Williamson	17	5.8	32	10.4	20	6.0	25	7.1	30	8.1	29	7.4	23	5.6	14	3.2
Wilson	0	0.0	2	5.3	1	2.6	0	0.0	2	4.9	3	7.3	1	2.4	3	6.6
Winkler	0	0.0	0	0.0	0	0.0	0	0.0	0	0.0	0	0.0	0	0.0	0	0.0
Wise	2	3.8	3	5.5	2	3.6	1	1.8	1	1.7	3	5.1	0	0.0	3	4.9
Wood	3	7.8	1	2.5	3	7.5	2	4.8	3	7.1	1	2.4	5	11.6	2	4.5
Yoakum	0	0.0	0	0.0	0	0.0	0	0.0	0	0.0	0	0.0	0	0.0	0	0.0
Young	0	0.0	0	0.0	1	5.6	0	0.0	0	0.0	0	0.0	0	0.0	0	0.0
Zapata	0	0.0	0	0.0	0	0.0	1	7.1	0	0.0	2	14.0	2	13.7	0	0.0
Zavala	0	0.0	2	17.1	0	0.0	2	17.1	3	25.3	2	16.9	0	0.0	0	0.0
TDCJ**	274		262		262		261		260		242		186		177	
<b>Total</b>	<b>4,301</b>	<b>19.4</b>	<b>4,366</b>	<b>19.4</b>	<b>4,296</b>	<b>18.8</b>	<b>3,918</b>	<b>16.7</b>	<b>4,073</b>	<b>17.0</b>	<b>4,140</b>	<b>17.0</b>	<b>4,230</b>	<b>17.1</b>	<b>4,242</b>	<b>16.7</b>

\* Rates represent cases per 100,000 population.

\*\* Texas Department of Criminal Justice.



## Texas HIV Infection Cases and Case Rates by Year of Diagnosis, 2003-2010



### HIV Infection Diagnoses by Sex, Race/Ethnicity and Age Group, 2003-2010

	2003		2004		2005		2006		2007		2008		2009		2010	
	Cases	Rate*	Cases	Rate*	Cases	Rate*	Cases	Rate*	Cases	Rate*	Cases	Rate*	Cases	Rate*	Cases	Rate*
<b>Sex</b>																
Male	3,281	29.8	3,364	30.0	3,342	29.3	3,028	25.8	3,105	26.0	3,201	26.3	3,289	26.5	3,306	25.9
Female	1,020	9.2	1,002	8.9	954	8.3	890	7.6	968	8.1	939	7.7	941	7.6	936	7.4
Unknown	0		0		0		0		0		0		0		0	
<b>Race</b>																
White	1,319	11.8	1,305	11.6	1,286	11.5	1,062	9.4	1,041	9.2	1,071	9.4	1,011	8.9	1,044	9.1
Black	1,694	66.7	1,738	67.7	1,655	63.7	1,649	60.0	1,693	60.8	1,754	62.1	1,796	62.7	1,779	60.8
Hispanic	1,208	16.0	1,250	15.9	1,278	15.7	1,134	13.4	1,239	14.1	1,220	13.4	1,326	14.0	1,327	13.5
Other	57	7.0	49	5.8	49	5.5	49	5.2	56	5.6	61	5.8	45	4.1	65	5.6
Unknown	23		24		28		24		44		34		52		27	
<b>Age Group</b>																
0 - 9	21	0.6	22	0.6	11	0.3	10	0.3	20	0.6	17	0.5	19	0.5	8	0.2
10 - 14	4	0.2	9	0.5	4	0.2	8	0.5	4	0.2	2	0.1	4	0.2	3	0.2
15 - 19	126	7.4	124	7.2	142	8.1	169	9.3	182	9.9	197	10.6	247	13.1	230	12.7
20 - 24	446	26.2	446	25.7	480	27.3	491	27.3	553	30.4	660	35.9	708	37.9	720	38.0
25 - 29	584	36.1	650	39.4	661	39.0	597	33.8	652	35.8	672	35.7	680	35.2	647	32.6
30 - 34	695	40.9	671	39.1	667	38.8	568	32.6	561	32.0	567	31.8	611	33.5	623	32.6
35 - 39	853	52.1	827	50.5	726	43.6	598	34.5	615	34.6	587	32.4	526	28.6	523	27.2
40 - 44	655	38.2	675	39.1	647	37.6	582	33.7	556	32.6	512	30.2	502	29.5	501	28.0
45+	917	13.2	942	13.2	958	13.0	895	11.7	930	11.8	926	11.5	933	11.3	987	11.6
Unknown	0		0		0		0		0		0		0		0	
<b>Total</b>	<b>4,301</b>	<b>19.4</b>	<b>4,366</b>	<b>19.4</b>	<b>4,296</b>	<b>18.8</b>	<b>3,918</b>	<b>16.7</b>	<b>4,073</b>	<b>17.0</b>	<b>4,140</b>	<b>17.0</b>	<b>4,230</b>	<b>17.1</b>	<b>4,242</b>	<b>16.7</b>

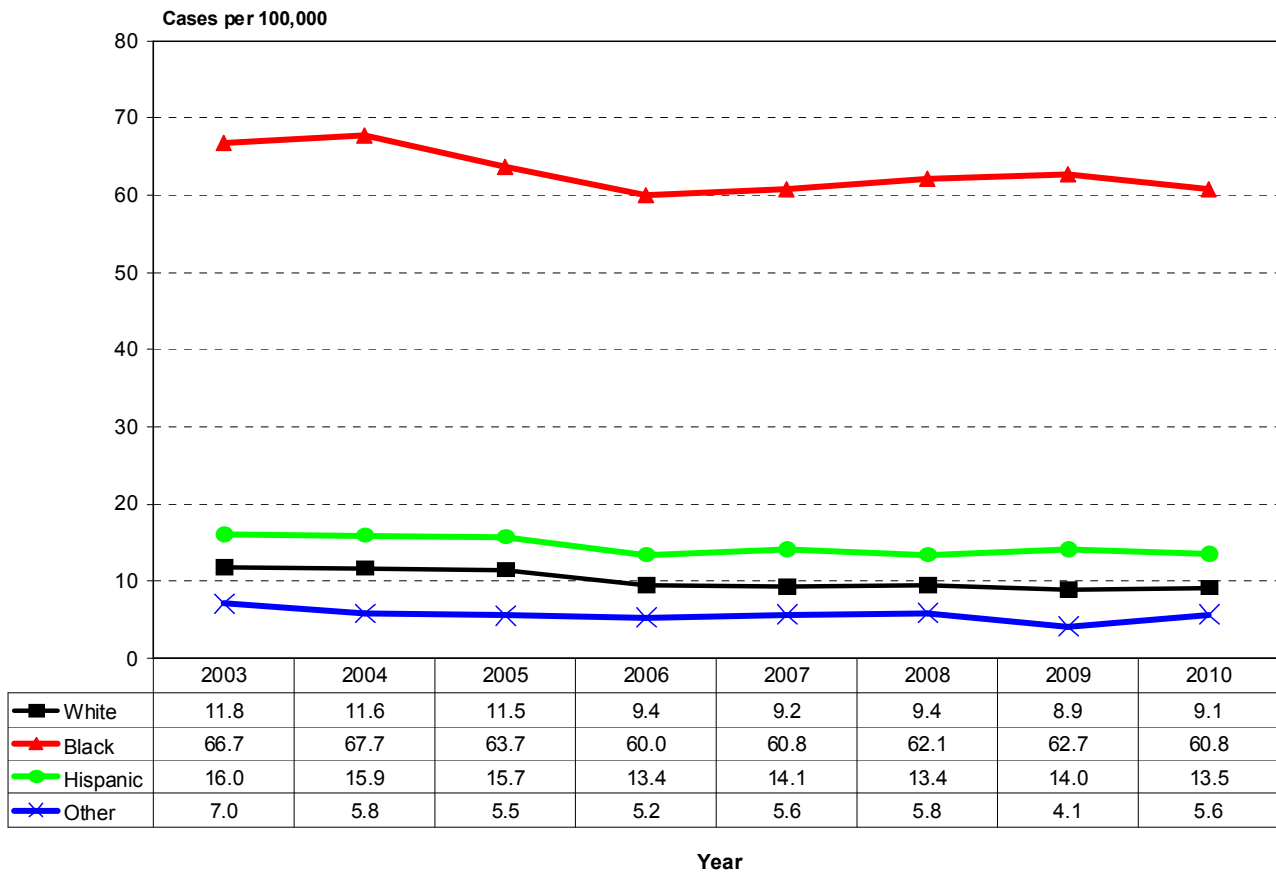
\* Rates represent cases per 100,000 population.

## HIV Infection Diagnoses by Age Group, Race/Ethnicity and Sex, 2010

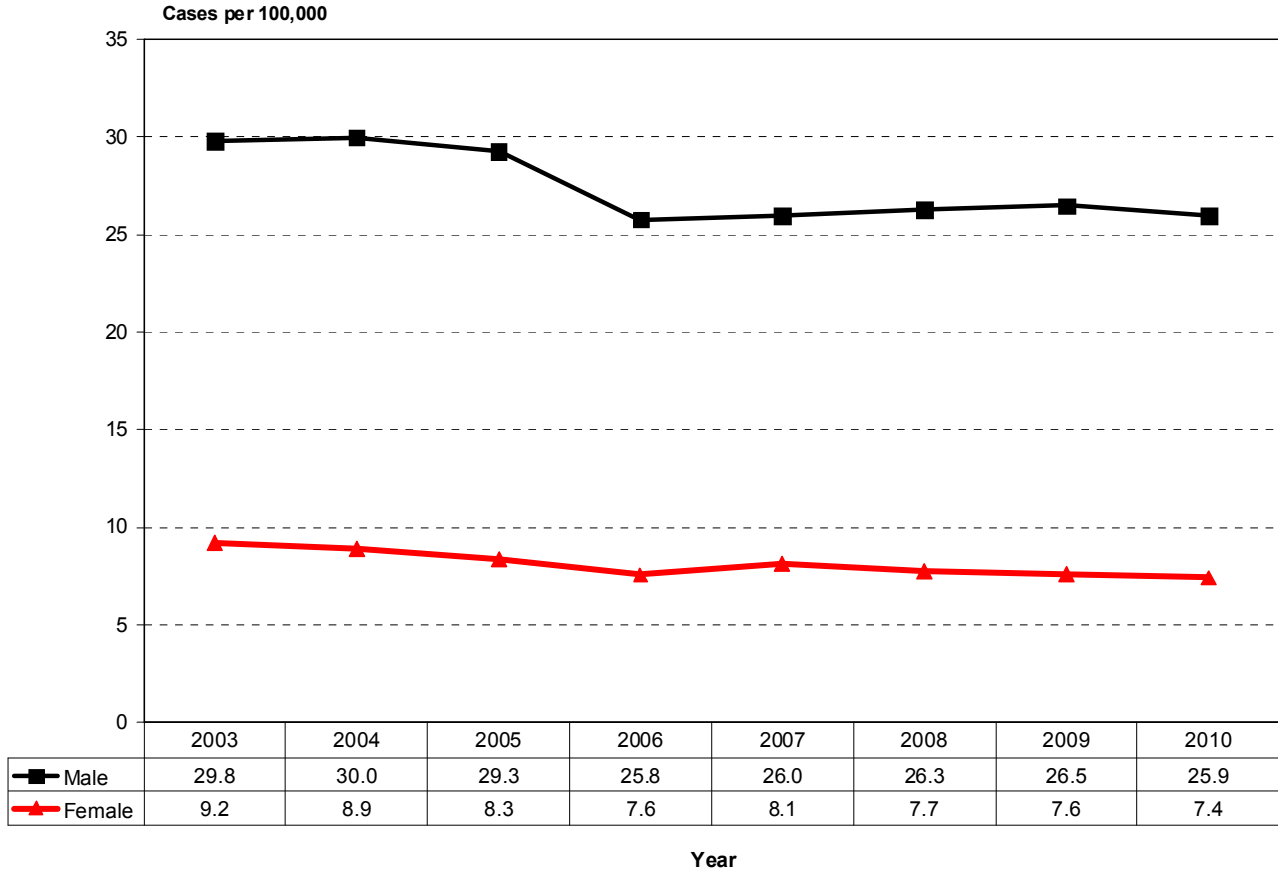
Age Group	Male						Female						Unk Sex	Total	Percent
	White	Black	Hisp.	Other	Unk	Total	White	Black	Hisp.	Other	Unk	Total			
0 - 9	-	2	1	-	-	3	1	3	1	-	-	5	0	8	0.2%
10 - 14	-	1	-	-	-	1	-	2	-	-	-	2	0	3	0.1%
15 - 19	21	113	51	-	-	185	2	38	4	1	-	45	0	230	5.4%
20 - 24	112	292	193	5	5	607	21	68	21	3	-	113	0	720	17.0%
25 - 29	114	174	216	9	2	515	12	88	29	2	1	132	0	647	15.3%
30 - 34	129	133	202	6	3	473	24	95	25	5	1	150	0	623	14.7%
35 - 39	109	116	150	10	3	388	21	91	21	2	-	135	0	523	12.3%
40 - 44	111	146	131	7	2	397	23	53	25	3	-	104	0	501	11.8%
45+	297	223	201	9	7	737	47	141	56	3	3	250	0	987	23.3%
Unk	-	-	-	-	-	0	-	-	-	-	-	0	0	0	0.0%
<b>Total</b>	893	1,200	1,145	46	22	3,306	151	579	182	19	5	936	0	4,242	
<b>Percent</b>	27.0%	36.3%	34.6%	1.4%	0.7%		16.1%	61.9%	19.4%	2.0%	0.5%				
<b>Percent Male</b>						77.9%	<b>Percent Female</b>						22.1%		

Total White	1,044	24.6%
Total Black	1,779	41.9%
Total Hispanic	1,327	31.3%
Total Other	65	1.5%
Total Unknown	27	0.6%
<b>Total</b>	<b>4,242</b>	

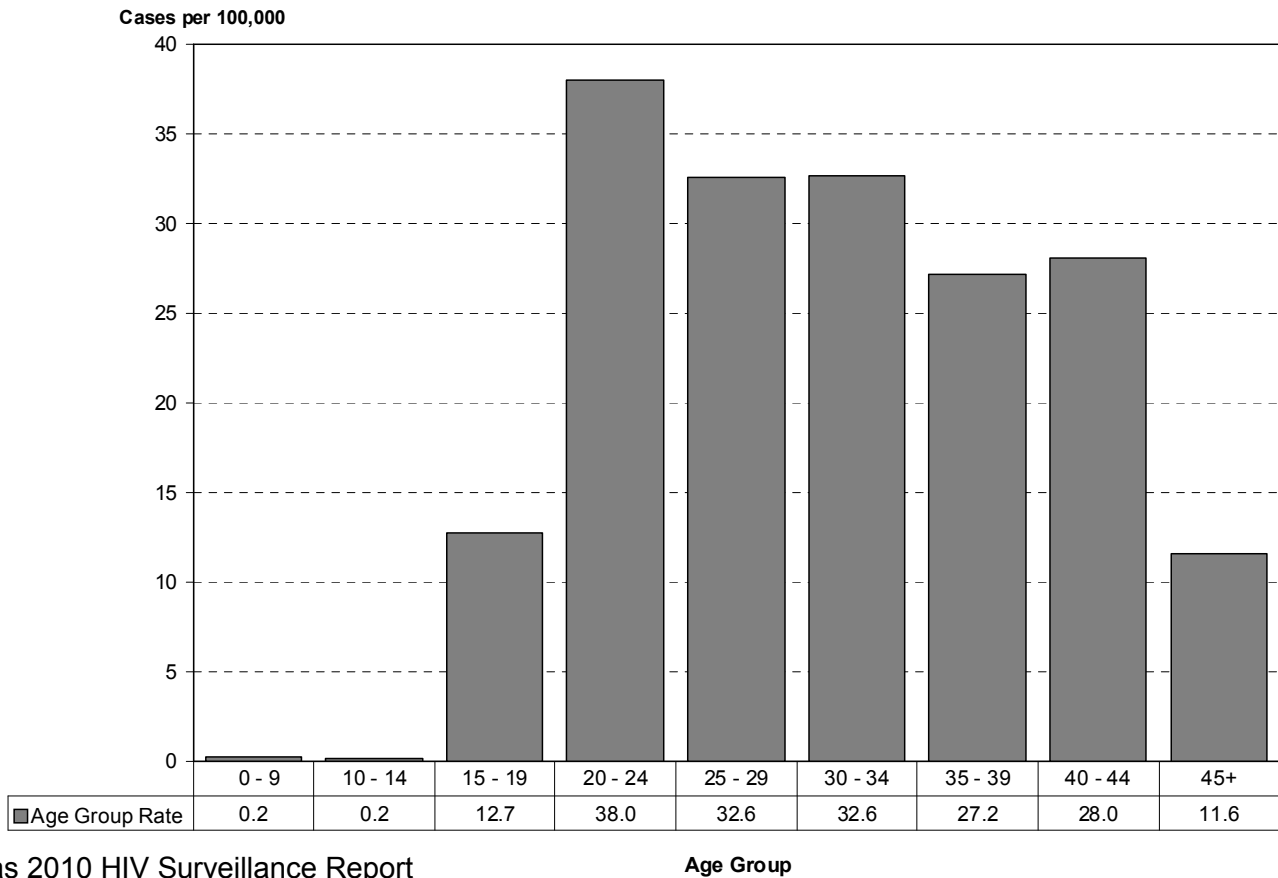
## Texas HIV Infection Case Rates by Race and Year of Diagnosis, 2003-2010



## Texas HIV Infection Case Rates by Sex and Year of Diagnosis, 2003-2010



## Texas HIV Infection Case Rates by Age Group, 2010



## AIDS Diagnoses by County of Residence, 2003-2010

County	2003		2004		2005		2006		2007		2008		2009		2010	
	Cases	Rate*	Cases	Rate*	Cases	Rate*	Cases	Rate*	Cases	Rate*	Cases	Rate*	Cases	Rate*	Cases	Rate*
Anderson	7	12.6	7	12.5	2	3.6	3	5.3	2	3.5	5	8.9	2	3.5	3	5.2
Andrews	0	0.0	0	0.0	0	0.0	0	0.0	0	0.0	0	0.0	2	14.1	1	7.0
Angelina	5	6.1	5	6.1	4	4.9	5	6.1	6	7.3	2	2.4	8	9.6	3	3.5
Aransas	1	4.2	1	4.2	0	0.0	0	0.0	1	4.0	2	7.9	1	3.9	2	7.3
Archer	0	0.0	0	0.0	0	0.0	0	0.0	0	0.0	1	10.8	0	0.0	0	0.0
Armstrong	0	0.0	0	0.0	0	0.0	0	0.0	0	0.0	1	45.6	0	0.0	0	0.0
Atascosa	1	2.4	3	7.0	1	2.4	2	4.7	2	4.6	2	4.6	3	6.7	1	2.2
Austin	0	0.0	1	3.9	2	7.6	0	0.0	2	7.4	4	14.7	3	10.9	3	10.4
Bailey	0	0.0	0	0.0	0	0.0	0	0.0	0	0.0	0	0.0	0	0.0	0	0.0
Bandera	0	0.0	0	0.0	2	10.2	0	0.0	0	0.0	3	14.8	0	0.0	0	0.0
Bastrop	3	4.5	3	4.4	3	4.3	0	0.0	3	4.1	7	9.5	5	6.7	6	7.3
Baylor	0	0.0	1	24.7	0	0.0	0	0.0	0	0.0	0	0.0	0	0.0	1	25.0
Bee	1	3.0	1	3.0	1	3.0	2	6.0	0	0.0	2	6.0	0	0.0	0	0.0
Bell	15	6.0	8	3.2	15	5.8	6	2.2	6	2.2	9	3.2	10	3.5	10	3.4
Bexar	178	12.2	216	14.5	229	15.2	206	13.3	160	10.1	182	11.2	204	12.4	165	10.1
Blanco	0	0.0	0	0.0	0	0.0	0	0.0	0	0.0	0	0.0	1	10.6	0	0.0
Borden	0	0.0	0	0.0	0	0.0	0	0.0	0	0.0	0	0.0	0	0.0	1	130.2
Bosque	0	0.0	0	0.0	5	27.5	0	0.0	1	5.4	0	0.0	0	0.0	0	0.0
Bowie	5	5.5	7	7.7	10	10.8	9	9.6	7	7.5	7	7.5	7	7.4	4	4.3
Brazoria	13	5.0	9	3.3	7	2.5	23	8.0	14	4.8	16	5.3	12	3.9	17	5.3
Brazos	17	10.5	14	8.7	9	5.6	8	4.8	11	6.5	13	7.5	8	4.4	8	4.6
Brewster	1	10.8	0	0.0	0	0.0	0	0.0	0	0.0	0	0.0	0	0.0	0	0.0
Briscoe	0	0.0	0	0.0	0	0.0	0	0.0	0	0.0	0	0.0	0	0.0	0	0.0
Brooks	0	0.0	0	0.0	1	13.1	1	12.9	0	0.0	0	0.0	1	13.0	0	0.0
Brown	1	2.6	4	10.5	2	5.2	3	7.8	1	2.6	6	15.5	2	5.2	1	2.5
Burleson	1	5.7	0	0.0	0	0.0	0	0.0	1	5.5	0	0.0	2	11.0	1	5.4
Burnet	1	2.7	1	2.6	2	5.1	1	2.5	3	7.1	2	4.6	0	0.0	1	2.1
Caldwell	1	2.9	3	8.5	1	2.8	1	2.8	3	8.4	1	2.7	0	0.0	2	5.2
Calhoun	0	0.0	3	14.5	1	4.9	0	0.0	0	0.0	1	4.8	0	0.0	0	0.0
Callahan	0	0.0	1	7.5	2	14.8	0	0.0	1	7.3	0	0.0	1	7.2	1	6.9
Cameron	25	6.8	34	9.1	29	7.7	22	5.6	31	7.9	31	7.9	22	5.5	15	3.6
Camp	0	0.0	0	0.0	1	7.9	0	0.0	0	0.0	0	0.0	0	0.0	0	0.0
Carson	1	15.5	0	0.0	0	0.0	0	0.0	0	0.0	0	0.0	0	0.0	0	0.0
Cass	2	6.6	0	0.0	1	3.3	5	16.4	2	6.6	1	3.3	1	3.3	0	0.0
Castro	1	12.8	1	13.0	0	0.0	0	0.0	0	0.0	0	0.0	0	0.0	0	0.0
Chambers	2	7.0	0	0.0	0	0.0	1	3.1	2	6.1	0	0.0	1	2.9	1	2.8
Cherokee	4	8.4	4	8.3	2	4.1	4	8.3	2	4.1	9	18.2	2	4.0	0	0.0
Childress	0	0.0	0	0.0	0	0.0	0	0.0	0	0.0	0	0.0	0	0.0	0	0.0
Clay	0	0.0	4	35.1	0	0.0	0	0.0	0	0.0	0	0.0	0	0.0	1	8.9
Cochran	0	0.0	0	0.0	0	0.0	0	0.0	0	0.0	0	0.0	0	0.0	0	0.0
Coke	0	0.0	0	0.0	0	0.0	0	0.0	0	0.0	0	0.0	0	0.0	0	0.0
Coleman	0	0.0	0	0.0	0	0.0	3	33.9	0	0.0	0	0.0	0	0.0	0	0.0
Collin	33	5.6	41	6.6	40	6.1	36	5.2	45	6.2	49	6.4	54	6.9	47	5.6
Collingsworth	0	0.0	0	0.0	0	0.0	0	0.0	0	0.0	0	0.0	0	0.0	0	0.0
Colorado	1	4.8	2	9.4	1	4.8	0	0.0	2	9.2	1	4.6	3	13.8	0	0.0
Comal	4	4.6	4	4.4	4	4.2	3	2.9	4	3.8	3	2.7	2	1.8	2	1.7
Comanche	0	0.0	0	0.0	0	0.0	0	0.0	0	0.0	0	0.0	1	7.0	0	0.0
Concho	3	76.6	1	25.7	0	0.0	0	0.0	0	0.0	0	0.0	0	0.0	0	0.0
Cooke	2	5.3	1	2.6	3	7.7	1	2.5	1	2.5	0	0.0	0	0.0	2	4.9
Coryell	3	4.0	7	9.4	0	0.0	0	0.0	1	1.3	5	6.6	0	0.0	3	3.7
Cottle	0	0.0	0	0.0	0	0.0	0	0.0	0	0.0	0	0.0	0	0.0	0	0.0
Crane	0	0.0	0	0.0	0	0.0	0	0.0	0	0.0	0	0.0	0	0.0	0	0.0
Crockett	0	0.0	0	0.0	0	0.0	0	0.0	0	0.0	0	0.0	0	0.0	0	0.0
Crosby	2	29.7	0	0.0	0	0.0	0	0.0	0	0.0	0	0.0	0	0.0	0	0.0
Culberson	0	0.0	0	0.0	0	0.0	0	0.0	0	0.0	0	0.0	0	0.0	0	0.0
Dallas	588	25.7	612	26.7	537	23.3	535	22.9	480	20.3	560	23.5	501	20.6	511	21.0
Dallam	0	0.0	0	0.0	0	0.0	0	0.0	0	0.0	0	0.0	0	0.0	0	0.0
Dawson	1	7.0	0	0.0	0	0.0	0	0.0	0	0.0	1	7.2	0	0.0	0	0.0
Deaf Smith	0	0.0	0	0.0	0	0.0	0	0.0	0	0.0	1	5.3	0	0.0	0	0.0
Delta	0	0.0	0	0.0	0	0.0	0	0.0	0	0.0	1	18.2	0	0.0	0	0.0
Denton	43	8.4	32	6.0	37	6.6	26	4.4	32	5.2	27	4.2	33	5.0	37	5.2
DeWitt	0	0.0	1	4.9	0	0.0	2	9.8	0	0.0	1	5.0	2	9.9	0	0.0
Dickens	0	0.0	0	0.0	0	0.0	0	0.0	0	0.0	0	0.0	0	0.0	0	0.0
Dimmit	1	9.9	0	0.0	1	9.9	0	0.0	0	0.0	1	10.0	0	0.0	0	0.0

\* Rates represent cases per 100,000 population.

## AIDS Diagnoses by County of Residence, 2003-2010

County	2003		2004		2005		2006		2007		2008		2009		2010	
	Cases	Rate*	Cases	Rate*	Cases	Rate*	Cases	Rate*	Cases	Rate*	Cases	Rate*	Cases	Rate*	Cases	Rate*
Donley	0	0.0	0	0.0	0	0.0	0	0.0	0	0.0	1	25.3	0	0.0	0	0.0
Duval	0	0.0	0	0.0	0	0.0	0	0.0	0	0.0	0	0.0	0	0.0	0	0.0
Eastland	1	5.5	0	0.0	0	0.0	1	5.4	0	0.0	0	0.0	1	5.5	0	0.0
Ector	7	5.7	8	6.4	10	8.0	9	7.1	11	8.6	8	6.1	6	4.5	6	4.5
Edwards	0	0.0	0	0.0	0	0.0	0	0.0	0	0.0	1	52.1	1	49.6	1	45.2
Ellis	4	3.2	5	3.9	9	6.8	4	2.9	5	3.5	4	2.7	7	4.6	4	2.5
El Paso	77	10.9	68	9.5	76	10.5	63	8.5	82	11.0	57	7.6	51	6.8	47	6.1
Erath	0	0.0	0	0.0	0	0.0	0	0.0	1	2.8	0	0.0	0	0.0	0	0.0
Falls	1	5.4	2	10.9	1	5.5	0	0.0	0	0.0	0	0.0	1	5.7	0	0.0
Fannin	3	9.2	0	0.0	1	3.0	2	5.9	1	2.9	1	2.9	0	0.0	0	0.0
Fayette	1	4.4	1	4.3	0	0.0	0	0.0	0	0.0	1	4.1	0	0.0	0	0.0
Fisher	0	0.0	0	0.0	0	0.0	0	0.0	0	0.0	1	24.1	0	0.0	0	0.0
Floyd	0	0.0	0	0.0	0	0.0	0	0.0	0	0.0	0	0.0	0	0.0	0	0.0
Foard	0	0.0	0	0.0	0	0.0	0	0.0	0	0.0	0	0.0	0	0.0	1	63.2
Fort Bend	16	3.9	23	5.3	27	5.9	39	8.0	38	7.4	34	6.4	40	7.1	27	4.7
Franklin	0	0.0	0	0.0	1	10.0	0	0.0	0	0.0	0	0.0	0	0.0	0	0.0
Freestone	1	5.3	2	10.6	1	5.2	1	5.2	1	5.1	1	5.1	3	15.1	0	0.0
Frio	0	0.0	0	0.0	1	6.1	3	18.4	1	6.1	1	6.1	1	6.1	3	16.7
Gaines	0	0.0	0	0.0	0	0.0	0	0.0	1	6.6	0	0.0	0	0.0	0	0.0
Galveston	40	15.1	41	15.1	32	11.6	40	14.2	31	10.9	19	6.6	21	7.3	22	7.5
Garza	2	39.2	0	0.0	0	0.0	0	0.0	1	19.8	3	59.2	2	39.5	0	0.0
Gillespie	0	0.0	0	0.0	0	0.0	0	0.0	1	4.1	0	0.0	2	8.1	1	3.9
Glasscock	0	0.0	0	0.0	0	0.0	0	0.0	0	0.0	0	0.0	0	0.0	1	65.6
Goliad	0	0.0	0	0.0	0	0.0	2	27.8	0	0.0	0	0.0	0	0.0	0	0.0
Gonzales	0	0.0	2	10.2	1	5.1	0	0.0	0	0.0	0	0.0	0	0.0	0	0.0
Gray	0	0.0	0	0.0	0	0.0	0	0.0	0	0.0	1	4.4	0	0.0	0	0.0
Grayson	1	0.9	2	1.7	0	0.0	5	4.2	5	4.2	5	4.2	6	5.0	6	5.0
Gregg	6	5.3	22	19.2	16	13.9	22	18.7	9	7.6	19	16.1	19	15.9	6	4.9
Grimes	2	8.2	3	12.2	0	0.0	1	4.0	3	12.1	4	15.8	1	3.9	0	0.0
Guadalupe	3	3.1	0	0.0	5	4.8	3	2.7	2	1.7	5	4.2	2	1.7	1	0.8
Hale	3	8.3	1	2.8	1	2.8	2	5.6	2	5.6	1	2.8	0	0.0	0	0.0
Hall	0	0.0	0	0.0	0	0.0	0	0.0	0	0.0	1	28.2	0	0.0	0	0.0
Hamilton	1	12.0	0	0.0	0	0.0	0	0.0	0	0.0	0	0.0	0	0.0	1	11.2
Hansford	0	0.0	0	0.0	0	0.0	0	0.0	0	0.0	0	0.0	0	0.0	0	0.0
Hardeman	1	22.1	1	21.4	1	22.1	0	0.0	0	0.0	0	0.0	0	0.0	0	0.0
Hardin	1	2.0	2	4.0	2	4.0	1	2.0	1	2.0	3	5.8	2	3.8	3	5.7
Harris	839	23.4	896	24.6	863	23.4	941	24.6	866	22.3	849	21.4	857	21.2	821	20.0
Harrison	5	8.0	7	11.2	4	6.3	4	6.3	5	7.8	5	7.8	4	6.2	2	3.0
Hartley	0	0.0	0	0.0	0	0.0	0	0.0	0	0.0	0	0.0	0	0.0	0	0.0
Haskell	0	0.0	0	0.0	2	35.5	1	17.7	0	0.0	0	0.0	0	0.0	0	0.0
Hays	1	0.9	5	4.1	4	3.2	2	1.5	9	6.4	4	2.7	7	4.5	2	1.2
Hemphill	0	0.0	0	0.0	0	0.0	0	0.0	0	0.0	0	0.0	0	0.0	0	0.0
Henderson	3	3.9	6	7.7	2	2.5	1	1.3	1	1.3	6	7.6	4	5.1	3	3.7
Hidalgo	43	6.8	50	7.6	53	7.8	44	6.2	50	6.9	32	4.4	30	4.1	32	4.0
Hill	0	0.0	2	5.9	1	2.9	1	2.9	2	5.7	2	5.6	1	2.8	2	5.4
Hockley	2	8.8	0	0.0	0	0.0	0	0.0	0	0.0	0	0.0	1	4.4	1	4.2
Hood	3	6.7	3	6.5	5	10.5	1	2.0	1	2.0	2	3.9	2	3.9	1	1.8
Hopkins	1	3.1	0	0.0	3	9.0	0	0.0	1	2.9	6	17.6	1	2.9	0	0.0
Houston	6	25.4	4	17.1	3	12.9	1	4.2	4	17.0	3	12.7	7	29.6	1	4.1
Howard	1	3.0	5	15.1	4	12.1	1	3.0	1	3.1	1	3.0	0	0.0	3	8.9
Hudspeth	0	0.0	0	0.0	0	0.0	0	0.0	0	0.0	0	0.0	1	29.0	0	0.0
Hunt	1	1.2	7	8.6	8	9.7	12	14.4	3	3.6	8	9.5	4	4.7	5	5.6
Hutchinson	2	8.7	0	0.0	2	8.9	1	4.4	1	4.4	1	4.4	0	0.0	0	0.0
Irion	0	0.0	0	0.0	0	0.0	0	0.0	1	58.0	0	0.0	0	0.0	0	0.0
Jack	0	0.0	0	0.0	0	0.0	0	0.0	0	0.0	0	0.0	0	0.0	0	0.0
Jackson	1	6.8	0	0.0	0	0.0	0	0.0	0	0.0	0	0.0	0	0.0	0	0.0
Jasper	0	0.0	1	2.8	2	5.6	0	0.0	3	8.5	3	8.5	0	0.0	1	2.8
Jeff Davis	0	0.0	0	0.0	0	0.0	0	0.0	0	0.0	0	0.0	0	0.0	0	0.0
Jefferson	29	11.6	18	7.2	30	12.1	16	6.5	43	17.5	39	15.8	36	14.6	38	15.6
Jim Hogg	0	0.0	0	0.0	1	19.7	0	0.0	0	0.0	0	0.0	0	0.0	0	0.0
Jim Wells	2	5.0	2	5.0	1	2.5	0	0.0	1	2.4	0	0.0	1	2.4	1	2.4
Johnson	7	5.0	5	3.5	5	3.4	10	6.6	7	4.5	7	4.5	10	6.4	5	3.0
Jones	1	4.9	1	4.9	0	0.0	1	4.9	0	0.0	0	0.0	1	4.9	1	4.8
Kames	0	0.0	0	0.0	0	0.0	0	0.0	0	0.0	2	13.0	1	6.5	2	11.9

\* Rates represent cases per 100,000 population.

## AIDS Diagnoses by County of Residence, 2003-2010

County	2003		2004		2005		2006		2007		2008		2009		2010	
	Cases	Rate*	Cases	Rate*	Cases	Rate*	Cases	Rate*	Cases	Rate*	Cases	Rate*	Cases	Rate*	Cases	Rate*
Kaufman	7	8.6	8	9.4	5	5.6	5	5.3	5	5.2	5	5.0	10	9.7	5	4.6
Kendall	1	3.8	1	3.6	1	3.5	1	3.3	1	3.1	1	3.0	2	5.9	2	5.7
Kenedy	0	0.0	0	0.0	0	0.0	0	0.0	0	0.0	0	0.0	0	0.0	0	0.0
Kent	0	0.0	0	0.0	0	0.0	0	0.0	0	0.0	0	0.0	0	0.0	0	0.0
Kerr	1	2.2	0	0.0	0	0.0	0	0.0	2	4.2	1	2.1	1	2.1	1	2.1
Kimble	0	0.0	0	0.0	0	0.0	0	0.0	0	0.0	0	0.0	1	21.6	0	0.0
King	0	0.0	0	0.0	0	0.0	0	0.0	0	0.0	0	0.0	0	0.0	0	0.0
Kinney	0	0.0	0	0.0	0	0.0	0	0.0	1	30.3	0	0.0	1	30.1	0	0.0
Kleberg	0	0.0	1	3.1	0	0.0	0	0.0	4	13.2	0	0.0	1	3.3	1	3.1
Knox	0	0.0	0	0.0	0	0.0	0	0.0	0	0.0	0	0.0	0	0.0	0	0.0
Lamar	3	6.1	3	6.0	2	4.0	5	10.0	2	4.0	1	2.0	0	0.0	2	4.0
Lamb	1	6.8	0	0.0	0	0.0	1	6.8	1	7.0	0	0.0	0	0.0	0	0.0
Lampasas	1	5.2	1	4.9	0	0.0	0	0.0	0	0.0	0	0.0	0	0.0	0	0.0
La Salle	0	0.0	0	0.0	0	0.0	0	0.0	0	0.0	1	16.8	1	16.6	0	0.0
Lavaca	0	0.0	3	15.4	0	0.0	0	0.0	0	0.0	0	0.0	0	0.0	0	0.0
Lee	1	6.1	4	24.0	2	12.1	0	0.0	1	5.8	1	5.8	0	0.0	0	0.0
Leon	1	6.2	0	0.0	0	0.0	0	0.0	2	12.4	2	12.1	1	5.9	1	5.9
Liberty	1	1.3	5	6.6	5	6.5	3	3.9	2	2.6	9	11.6	2	2.6	4	4.9
Limestone	0	0.0	3	13.3	1	4.4	0	0.0	0	0.0	1	4.5	1	4.4	1	4.3
Lipscomb	0	0.0	0	0.0	0	0.0	0	0.0	0	0.0	0	0.0	0	0.0	0	0.0
Live Oak	0	0.0	0	0.0	0	0.0	0	0.0	0	0.0	0	0.0	1	8.2	1	8.1
Llano	1	5.5	0	0.0	1	5.4	0	0.0	1	5.2	0	0.0	2	10.4	0	0.0
Loving	0	0.0	0	0.0	0	0.0	0	0.0	0	0.0	0	0.0	0	0.0	0	0.0
Lubbock	27	10.8	13	5.2	13	5.2	10	3.9	5	1.9	6	2.3	3	1.1	1	0.4
Lynn	1	15.6	0	0.0	0	0.0	0	0.0	0	0.0	0	0.0	0	0.0	0	0.0
McCulloch	0	0.0	0	0.0	0	0.0	0	0.0	0	0.0	0	0.0	0	0.0	0	0.0
McLennan	13	5.9	14	6.4	12	5.4	15	6.7	18	8.0	9	3.9	11	4.8	9	3.9
McMullen	0	0.0	0	0.0	0	0.0	0	0.0	0	0.0	0	0.0	0	0.0	0	0.0
Madison	1	7.5	1	7.5	2	14.9	2	14.8	3	21.8	0	0.0	0	0.0	2	13.8
Marion	1	9.3	1	9.1	1	9.2	2	18.4	0	0.0	0	0.0	0	0.0	3	27.2
Martin	0	0.0	0	0.0	0	0.0	0	0.0	0	0.0	0	0.0	1	19.9	0	0.0
Mason	0	0.0	0	0.0	0	0.0	0	0.0	0	0.0	0	0.0	0	0.0	0	0.0
Matagorda	2	5.3	0	0.0	0	0.0	0	0.0	1	2.7	1	2.7	3	8.0	1	2.6
Maverick	2	4.0	3	5.9	1	1.9	2	3.8	3	5.7	1	1.9	0	0.0	7	12.7
Medina	2	4.8	0	0.0	2	4.7	1	2.3	1	2.3	0	0.0	1	2.2	1	2.2
Menard	0	0.0	0	0.0	0	0.0	0	0.0	1	42.9	0	0.0	0	0.0	0	0.0
Midland	12	10.1	4	3.3	5	4.2	10	8.0	3	2.4	5	3.9	7	5.3	6	4.6
Milam	1	4.0	1	3.9	1	3.9	1	3.9	3	11.8	1	3.9	0	0.0	0	0.0
Mills	0	0.0	0	0.0	0	0.0	0	0.0	0	0.0	0	0.0	0	0.0	0	0.0
Mitchell	1	10.4	0	0.0	1	10.4	0	0.0	0	0.0	1	10.5	0	0.0	0	0.0
Montague	2	10.2	1	5.1	0	0.0	1	5.1	0	0.0	1	5.0	1	5.0	0	0.0
Montgomery	23	6.7	15	4.2	16	4.3	16	4.0	16	3.8	19	4.4	18	4.0	16	3.4
Moore	2	9.9	0	0.0	1	5.0	0	0.0	1	5.0	1	5.0	0	0.0	0	0.0
Morris	1	7.8	0	0.0	1	7.7	0	0.0	1	7.6	2	15.3	0	0.0	0	0.0
Motley	0	0.0	0	0.0	0	0.0	0	0.0	0	0.0	0	0.0	0	0.0	0	0.0
Nacogdoches	8	13.2	6	9.7	3	4.9	3	4.8	2	3.2	11	17.5	3	4.7	4	6.2
Navarro	6	12.6	5	10.5	12	24.9	2	4.1	1	2.0	5	10.2	4	8.1	7	13.6
Newton	0	0.0	0	0.0	1	6.9	1	7.0	0	0.0	0	0.0	0	0.0	0	0.0
Nolan	0	0.0	0	0.0	1	6.6	0	0.0	0	0.0	4	26.7	0	0.0	2	13.9
Nueces	24	7.6	27	8.5	30	9.5	28	8.8	21	6.6	19	5.9	20	6.2	9	2.8
Ochiltree	0	0.0	0	0.0	0	0.0	0	0.0	0	0.0	0	0.0	0	0.0	0	0.0
Oldham	0	0.0	0	0.0	0	0.0	0	0.0	0	0.0	0	0.0	0	0.0	0	0.0
Orange	3	3.5	3	3.5	2	2.4	6	7.1	5	5.9	7	8.3	9	10.7	5	5.9
Palo Pinto	0	0.0	0	0.0	0	0.0	1	3.6	2	7.1	0	0.0	0	0.0	2	6.7
Panola	1	4.4	2	8.8	0	0.0	1	4.3	0	0.0	2	8.6	1	4.3	0	0.0
Parker	2	2.0	6	5.9	3	2.9	5	4.7	1	0.9	3	2.7	4	3.5	2	1.7
Parmer	1	10.2	1	10.2	0	0.0	1	10.2	1	10.3	0	0.0	1	10.3	0	0.0
Pecos	1	6.2	0	0.0	0	0.0	0	0.0	0	0.0	0	0.0	0	0.0	0	0.0
Polk	3	6.9	4	8.9	0	0.0	2	4.3	4	8.6	3	6.5	4	8.7	1	2.0
Potter	10	8.5	7	5.9	8	6.7	7	5.8	8	6.6	14	11.5	3	2.5	2	1.6
Presidio	1	12.9	0	0.0	1	12.6	0	0.0	1	12.3	0	0.0	0	0.0	0	0.0
Rains	0	0.0	0	0.0	0	0.0	1	9.4	1	9.4	0	0.0	0	0.0	0	0.0
Randall	3	2.7	1	0.9	3	2.7	0	0.0	2	1.7	1	0.9	3	2.5	0	0.0
Reagan	0	0.0	0	0.0	0	0.0	0	0.0	0	0.0	0	0.0	0	0.0	0	0.0

\* Rates represent cases per 100,000 population.

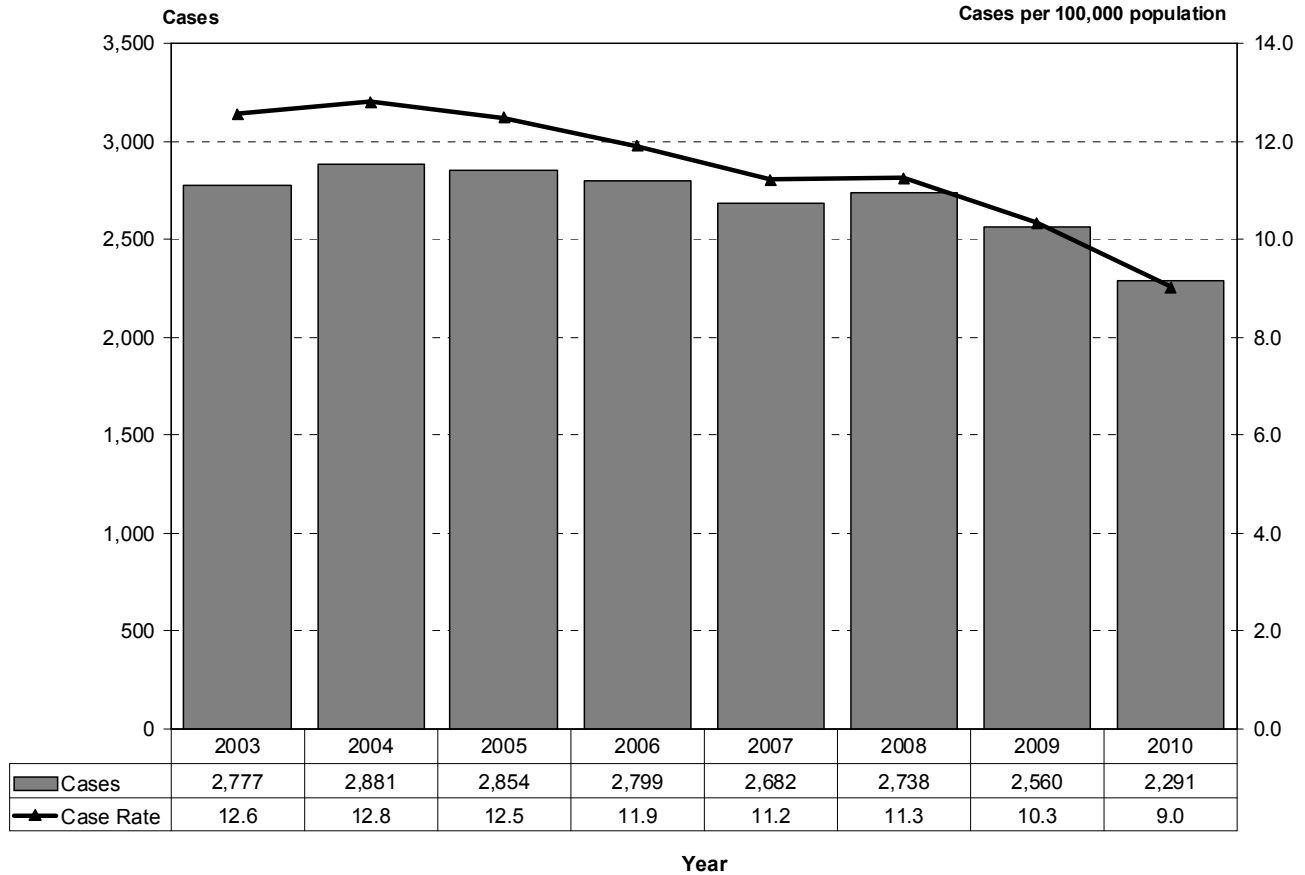
## AIDS Diagnoses by County of Residence, 2003-2010

County	2003		2004		2005		2006		2007		2008		2009		2010	
	Cases	Rate*	Cases	Rate*	Cases	Rate*	Cases	Rate*	Cases	Rate*	Cases	Rate*	Cases	Rate*	Cases	Rate*
Real	0	0.0	0	0.0	0	0.0	0	0.0	0	0.0	0	0.0	0	0.0	0	0.0
Red River	0	0.0	1	7.1	0	0.0	1	7.2	0	0.0	0	0.0	0	0.0	2	13.9
Reeves	0	0.0	0	0.0	1	8.6	1	8.6	2	17.4	1	8.8	4	34.9	3	27.1
Refugio	0	0.0	0	0.0	0	0.0	1	13.3	0	0.0	0	0.0	0	0.0	1	14.0
Roberts	0	0.0	0	0.0	0	0.0	0	0.0	0	0.0	0	0.0	0	0.0	0	0.0
Robertson	2	12.6	3	18.7	1	6.2	3	18.6	3	18.7	1	6.3	0	0.0	1	5.9
Rockwall	1	1.8	1	1.7	1	1.6	1	1.4	1	1.4	2	2.6	0	0.0	2	2.3
Runnels	0	0.0	2	18.0	0	0.0	0	0.0	1	9.2	0	0.0	0	0.0	1	8.5
Rusk	4	8.4	2	4.1	1	2.1	4	8.3	1	2.1	2	4.1	2	4.1	0	0.0
Sabine	0	0.0	0	0.0	1	9.6	1	9.6	1	9.6	0	0.0	0	0.0	0	0.0
San Augustine	1	11.1	0	0.0	0	0.0	0	0.0	0	0.0	0	0.0	0	0.0	0	0.0
San Jacinto	1	4.3	1	4.3	0	0.0	0	0.0	1	3.9	2	7.8	1	3.9	2	7.1
San Patricio	1	1.5	1	1.4	4	5.8	3	4.3	3	4.3	1	1.4	1	1.4	1	1.4
San Saba	0	0.0	0	0.0	0	0.0	0	0.0	0	0.0	1	16.6	0	0.0	0	0.0
Schleicher	0	0.0	0	0.0	0	0.0	0	0.0	0	0.0	0	0.0	0	0.0	0	0.0
Scurry	0	0.0	1	6.2	0	0.0	0	0.0	0	0.0	2	12.3	0	0.0	0	0.0
Shackelford	0	0.0	0	0.0	0	0.0	0	0.0	0	0.0	0	0.0	2	59.1	0	0.0
Shelby	3	11.8	2	7.8	1	3.9	2	7.8	4	15.6	2	7.6	0	0.0	0	0.0
Sherman	0	0.0	1	31.6	0	0.0	0	0.0	0	0.0	0	0.0	0	0.0	0	0.0
Smith	13	7.1	21	11.3	19	10.0	9	4.6	12	6.1	15	7.5	10	4.9	4	1.9
Somervell	0	0.0	0	0.0	0	0.0	0	0.0	0	0.0	1	12.3	0	0.0	0	0.0
Starr	4	7.0	1	1.7	3	4.9	0	0.0	0	0.0	0	0.0	0	0.0	0	0.0
Stephens	0	0.0	0	0.0	0	0.0	1	10.5	0	0.0	0	0.0	0	0.0	0	0.0
Sterling	0	0.0	0	0.0	0	0.0	0	0.0	0	0.0	0	0.0	0	0.0	0	0.0
Stonewall	0	0.0	0	0.0	0	0.0	0	0.0	0	0.0	0	0.0	0	0.0	0	0.0
Sutton	0	0.0	0	0.0	0	0.0	0	0.0	0	0.0	0	0.0	0	0.0	0	0.0
Swisher	0	0.0	1	12.6	0	0.0	0	0.0	0	0.0	0	0.0	0	0.0	0	0.0
Tarrant	157	10.1	136	8.6	171	10.5	177	10.6	151	8.9	146	8.4	115	6.5	95	5.2
Taylor	5	4.0	10	7.8	7	5.5	7	5.5	8	6.2	10	7.8	8	6.2	10	7.6
Terrell	0	0.0	0	0.0	0	0.0	0	0.0	0	0.0	0	0.0	0	0.0	0	0.0
Terry	0	0.0	0	0.0	0	0.0	1	8.1	0	0.0	1	8.2	0	0.0	0	0.0
Throckmorton	0	0.0	0	0.0	0	0.0	0	0.0	0	0.0	0	0.0	0	0.0	0	0.0
Titus	3	10.3	3	10.1	2	6.7	2	6.6	1	3.3	0	0.0	1	3.3	1	3.1
Tom Green	1	1.0	2	1.9	4	3.9	2	1.9	5	4.8	4	3.8	6	5.7	0	0.0
Travis	140	16.3	135	15.4	169	18.8	150	16.2	161	17.0	148	15.0	145	14.3	87	8.8
Trinity	2	14.4	4	27.9	1	7.0	2	14.0	1	7.0	1	7.0	0	0.0	1	6.6
Tyler	2	9.5	1	4.7	1	4.7	1	4.8	1	4.7	1	4.7	1	4.7	1	4.5
Upshur	1	2.8	1	2.7	1	2.7	1	2.7	2	5.3	1	2.7	2	5.3	2	5.2
Upton	0	0.0	0	0.0	0	0.0	0	0.0	0	0.0	0	0.0	0	0.0	0	0.0
Uvalde	3	11.5	1	3.8	0	0.0	0	0.0	0	0.0	2	7.8	0	0.0	0	0.0
Val Verde	1	2.2	2	4.2	0	0.0	0	0.0	5	10.5	1	2.1	0	0.0	3	6.0
Van Zandt	2	4.0	2	3.9	0	0.0	3	5.8	2	3.8	2	3.8	3	5.7	1	1.9
Victoria	5	5.9	2	2.3	2	2.3	2	2.3	3	3.5	1	1.2	1	1.1	3	3.4
Walker	3	4.7	2	3.2	1	1.6	3	4.7	6	9.3	9	13.9	3	4.6	6	9.2
Waller	3	8.4	2	5.5	2	5.5	4	10.4	4	10.3	3	7.7	3	7.7	1	2.4
Ward	1	9.6	0	0.0	0	0.0	0	0.0	0	0.0	0	0.0	0	0.0	0	0.0
Washington	0	0.0	1	3.2	0	0.0	0	0.0	2	6.1	0	0.0	2	6.1	1	3.0
Webb	14	6.5	14	6.3	13	5.7	20	8.5	17	7.1	14	5.9	12	5.0	14	5.4
Wharton	4	9.5	3	7.1	1	2.4	3	7.1	1	2.4	4	9.4	5	11.7	4	9.1
Wheeler	0	0.0	0	0.0	0	0.0	0	0.0	0	0.0	0	0.0	0	0.0	0	0.0
Wichita	5	3.8	6	4.7	5	3.9	6	4.6	5	3.8	8	6.1	3	2.2	5	3.9
Wilbarger	1	7.0	0	0.0	0	0.0	1	7.1	1	6.9	0	0.0	0	0.0	0	0.0
Willacy	2	9.7	2	9.6	1	4.8	3	14.4	1	4.8	4	19.1	4	19.1	2	9.1
Williamson	7	2.4	9	2.9	15	4.5	18	5.1	17	4.6	21	5.4	11	2.7	5	1.1
Wilson	0	0.0	4	10.6	0	0.0	0	0.0	0	0.0	2	4.9	0	0.0	1	2.2
Winkler	0	0.0	1	14.7	0	0.0	0	0.0	0	0.0	1	14.4	0	0.0	0	0.0
Wise	2	3.8	1	1.8	2	3.6	1	1.8	2	3.5	2	3.4	0	0.0	1	1.6
Wood	2	5.2	1	2.5	1	2.5	1	2.4	0	0.0	3	7.1	0	0.0	1	2.2
Yoakum	0	0.0	0	0.0	0	0.0	0	0.0	0	0.0	0	0.0	0	0.0	1	12.1
Young	1	5.6	1	5.6	1	5.6	0	0.0	0	0.0	0	0.0	0	0.0	0	0.0
Zapata	0	0.0	0	0.0	0	0.0	0	0.0	0	0.0	1	7.0	1	6.9	0	0.0
Zavala	0	0.0	0	0.0	0	0.0	2	17.1	1	8.4	2	16.9	0	0.0	0	0.0
TDCJ**	123		126		152		86		108		80		65		29	
<b>Total</b>	<b>2,777</b>	<b>12.6</b>	<b>2,881</b>	<b>12.8</b>	<b>2,854</b>	<b>12.5</b>	<b>2,799</b>	<b>11.9</b>	<b>2,682</b>	<b>11.2</b>	<b>2,738</b>	<b>11.3</b>	<b>2,560</b>	<b>10.3</b>	<b>2,291</b>	<b>9.0</b>

\* Rates represent cases per 100,000 population.

\*\* Texas Department of Criminal Justice.

## Texas AIDS Cases and Case Rates by Year of Diagnosis, 2003-2010



### AIDS Diagnoses by Sex, Race/Ethnicity and Age Group, 2003-2010

	2003		2004		2005		2006		2007		2008		2009		2010	
	Cases	Rate*	Cases	Rate*	Cases	Rate*	Cases	Rate*	Cases	Rate*	Cases	Rate*	Cases	Rate*	Cases	Rate*
<b>Sex</b>																
Male	2,145	19.5	2,206	19.7	2,172	19.0	2,146	18.3	2,006	16.8	2,082	17.1	1,941	15.6	1,763	13.8
Female	632	5.7	675	6.0	682	6.0	653	5.6	676	5.7	656	5.4	619	5.0	528	4.2
Unknown	0		0		0		0		0		0		0		0	
<b>Race</b>																
White	813	7.3	817	7.3	800	7.1	764	6.7	717	6.3	732	6.5	635	5.6	520	4.5
Black	1,102	43.4	1,184	46.1	1,124	43.3	1,149	41.8	1,064	38.2	1,157	41.0	1,052	36.8	988	33.8
Hispanic	821	10.9	834	10.6	885	10.9	845	10.0	847	9.6	788	8.6	786	8.3	711	7.2
Other	25	3.1	35	4.1	25	2.8	22	2.3	28	2.8	32	3.1	41	3.7	27	2.3
Unknown	16		11		20		19		26		29		46		45	
<b>Age Group</b>																
0 - 9	0	0.0	0	0.0	0	0.0	1	0.0	2	0.1	2	0.1	0	0.0	0	0.0
10 - 14	2	0.1	3	0.2	4	0.2	5	0.3	5	0.3	3	0.2	2	0.1	2	0.1
15 - 19	24	1.4	33	1.9	35	2.0	33	1.8	34	1.8	43	2.3	37	2.0	43	2.4
20 - 24	160	9.4	150	8.6	158	9.0	142	7.9	172	9.5	174	9.5	192	10.3	188	9.9
25 - 29	274	16.9	343	20.8	326	19.3	338	19.2	329	18.1	331	17.6	306	15.8	276	13.9
30 - 34	460	27.0	455	26.5	418	24.3	412	23.7	372	21.2	409	23.0	398	21.8	319	16.7
35 - 39	641	39.1	582	35.5	564	33.9	494	28.5	456	25.7	492	27.1	416	22.7	365	19.0
40 - 44	491	28.6	543	31.4	527	30.6	527	30.5	499	29.2	453	26.7	392	23.1	353	19.7
45+	725	10.4	772	10.8	822	11.2	847	11.1	813	10.3	831	10.3	817	9.9	745	8.7
Unknown	0		0		0		0		0		0		0		0	
<b>Total</b>	<b>2,777</b>	<b>12.6</b>	<b>2,881</b>	<b>12.8</b>	<b>2,854</b>	<b>12.5</b>	<b>2,799</b>	<b>11.9</b>	<b>2,682</b>	<b>11.2</b>	<b>2,738</b>	<b>11.3</b>	<b>2,560</b>	<b>10.3</b>	<b>2,291</b>	<b>9.0</b>

\* Rates represent cases per 100,000 population.

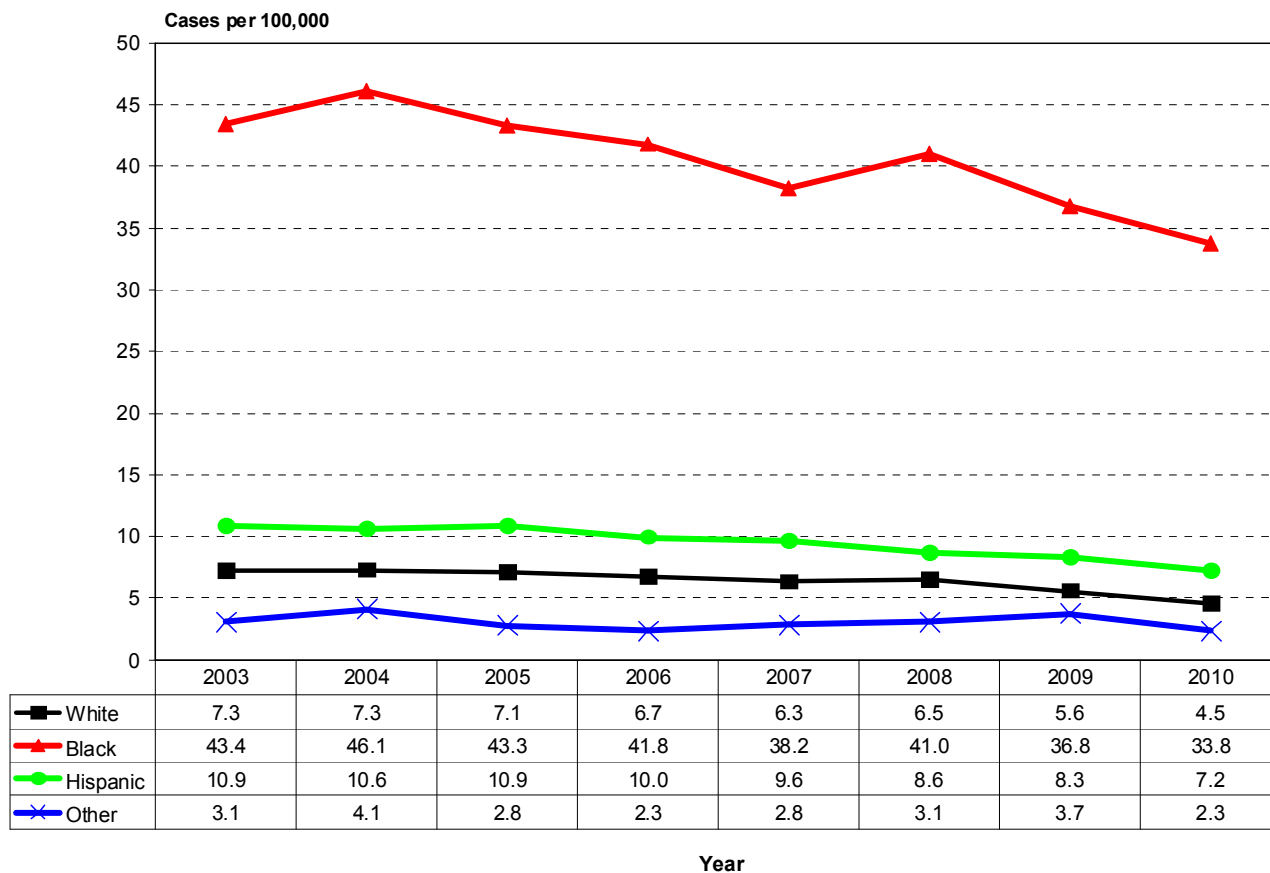


## AIDS Diagnoses by Age Group, Race/Ethnicity and Sex, 2010

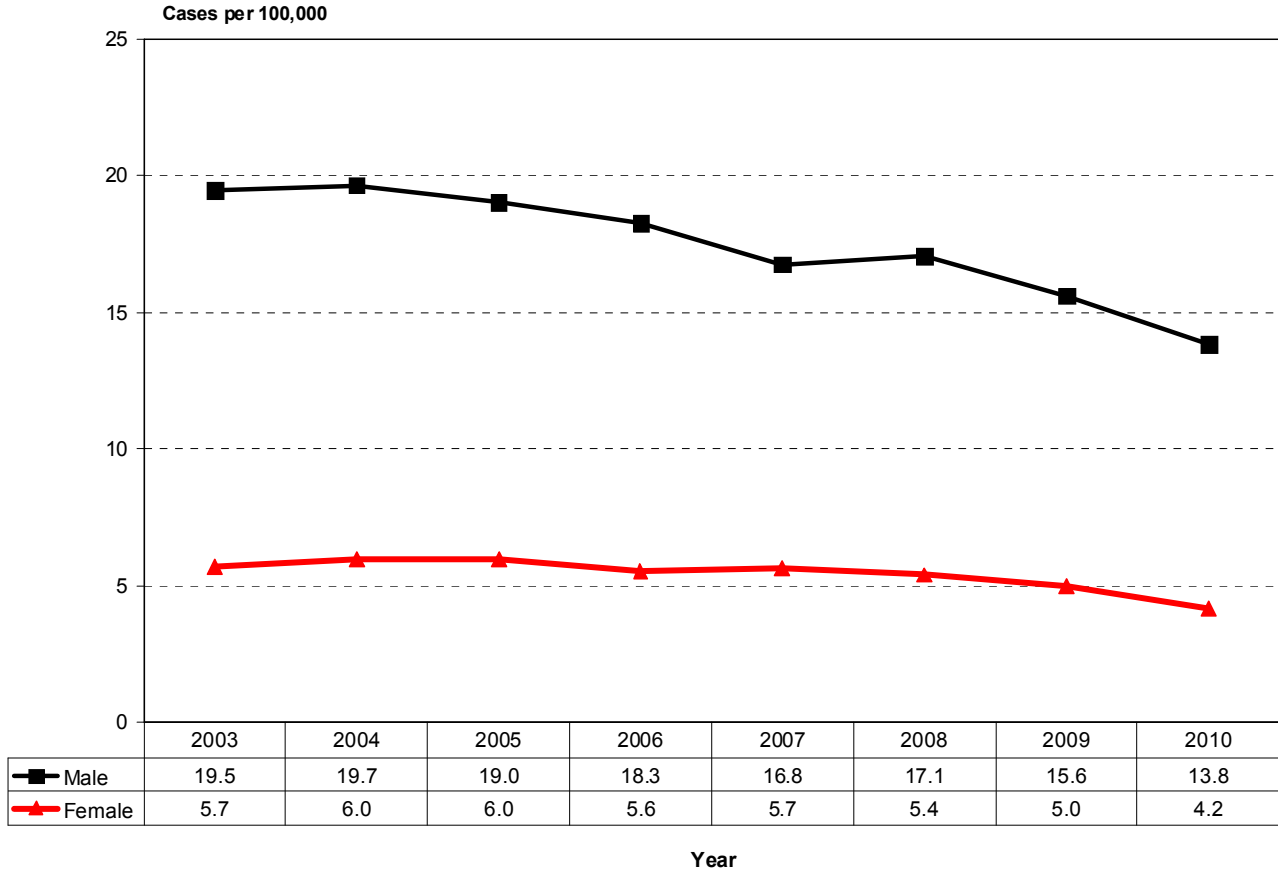
Age Group	Male						Female						Unk Sex	Total	Percent
	White	Black	Hisp.	Other	Unk	Total	White	Black	Hisp.	Other	Unk	Total			
0 - 9	-	-	-	-	-	0	-	-	-	-	-	0	0	0	0.0%
10 - 14	1	-	-	-	-	1	-	1	-	-	-	1	0	2	0.1%
15 - 19	5	19	4	-	-	28	-	12	3	-	-	15	0	43	1.9%
20 - 24	17	82	55	1	3	158	-	22	7	1	-	30	0	188	8.2%
25 - 29	23	90	100	3	3	219	3	40	11	-	3	57	0	276	12.0%
30 - 34	54	64	119	2	2	241	14	52	10	2	-	78	0	319	13.9%
35 - 39	75	88	99	4	5	271	8	64	19	1	2	94	0	365	15.9%
40 - 44	74	92	96	7	6	275	13	48	16	-	1	78	0	353	15.4%
45+	205	213	136	4	12	570	28	101	36	2	8	175	0	745	32.5%
Unk	-	-	-	-	-	0	-	-	-	-	-	0	0	0	0.0%
<b>Total</b>	<b>454</b>	<b>648</b>	<b>609</b>	<b>21</b>	<b>31</b>	<b>1,763</b>	<b>66</b>	<b>340</b>	<b>102</b>	<b>6</b>	<b>14</b>	<b>528</b>	<b>0</b>	<b>2,291</b>	
<b>Percent</b>	<b>25.8%</b>	<b>36.8%</b>	<b>34.5%</b>	<b>1.2%</b>	<b>1.8%</b>		<b>12.5%</b>	<b>64.4%</b>	<b>19.3%</b>	<b>1.1%</b>	<b>2.7%</b>				
<b>Percent Male</b>						<b>77.0%</b>	<b>Percent Female</b>						<b>23.0%</b>		

Total White	520	22.7%
Total Black	988	43.1%
Total Hispanic	711	31.0%
Total Other	27	1.2%
Total Unknown	45	2.0%
<b>Total</b>	<b>2,291</b>	

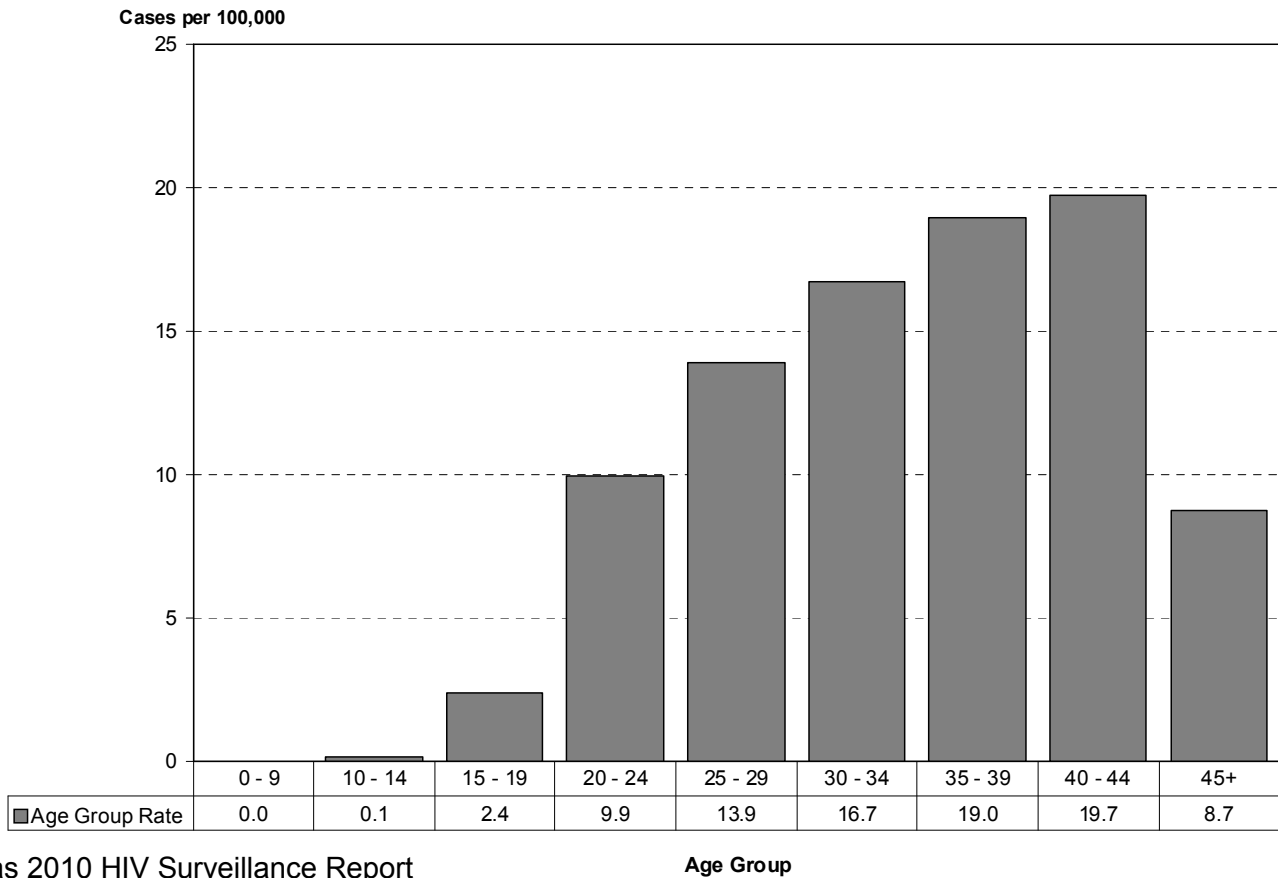
## Texas AIDS Case Rates by Race and Year of Diagnosis, 2003-2010



## Texas AIDS Case Rates by Sex and Year of Diagnosis, 2003-2010



## Texas AIDS Case Rates by Age Group, 2010



**People Living with HIV and Cumulative Diagnoses by County of Residence  
Through December 31, 2010**

County	People Living with HIV		Cumulative HIV Diagnoses	County	People Living with HIV		Cumulative HIV Diagnoses
	Cases	Rate*	Cases		Cases	Rate*	Cases
Anderson	89	153.8	145	Donley	3	77.5	6
Andrews	6	42.0	15	Duval	6	49.8	9
Angelina	107	125.7	198	Eastland	9	47.9	17
Aransas	22	79.9	43	Ector	138	103.9	277
Archer	1	10.5	4	Edwards	3	135.6	7
Armstrong	1	43.9	2	Ellis	132	82.9	228
Atascosa	35	76.3	48	El Paso	1,609	208.1	2,482
Austin	34	118.3	44	Erath	12	30.2	26
Bailey	0	0.0	3	Falls	14	74.7	26
Bandera	13	61.1	20	Fannin	21	60.4	34
Bastrop	89	108.9	149	Fayette	13	51.5	20
Baylor	2	50.1	3	Fisher	4	96.0	5
Bee	22	64.5	47	Floyd	2	28.9	6
Bell	389	133.5	592	Foard	2	126.4	3
Bexar	4,316	263.7	7,591	Fort Bend	614	106.3	997
Blanco	4	38.7	7	Franklin	5	45.6	6
Borden	1	130.2	2	Freestone	14	68.5	32
Bosque	10	56.3	16	Frio	23	128.1	35
Bowie	126	135.6	269	Gaines	2	12.2	5
Brazoria	308	96.5	538	Galveston	656	223.2	1,295
Brazos	254	144.7	429	Garza	14	267.2	21
Brewster	1	10.5	6	Gillespie	7	27.1	14
Briscoe	0	0.0	1	Glasscock	2	131.1	2
Brooks	7	89.0	12	Goliad	2	25.9	2
Brown	38	95.2	56	Gonzales	13	63.8	22
Burleson	17	91.0	33	Gray	8	35.0	21
Burnet	31	65.2	50	Grayson	91	75.3	188
Caldwell	45	116.2	68	Gregg	330	268.3	513
Calhoun	14	60.2	29	Grimes	32	121.1	57
Callahan	10	68.8	13	Guadalupe	67	51.9	97
Cameron	579	138.7	901	Hale	22	59.2	46
Camp	10	74.6	18	Hall	2	52.1	4
Carson	3	44.3	8	Hamilton	8	89.5	12
Cass	28	91.4	47	Hansford	0	0.0	1
Castro	1	13.5	5	Hardeman	4	86.8	12
Chambers	13	36.3	26	Hardin	39	74.7	77
Cherokee	80	160.0	120	Harris	19,733	481.8	36,793
Childress	3	37.8	12	Harrison	89	131.5	152
Clay	6	53.5	10	Hartley	0	0.0	0
Cochran	0	0.0	1	Haskell	8	135.6	14
Coke	1	25.5	3	Hays	122	74.4	193
Coleman	7	78.3	10	Hemphill	1	27.8	1
Collin	924	109.7	1,151	Henderson	64	78.7	117
Collingsworth	1	31.7	1	Hidalgo	874	110.2	1,267
Colorado	23	103.3	38	Hill	28	75.7	59
Comal	81	66.9	129	Hockley	8	33.5	22
Comanche	6	42.1	12	Hood	47	86.0	70
Concho	8	207.7	12	Hopkins	36	104.0	64
Cooke	20	49.0	39	Houston	60	245.0	96
Coryell	47	57.9	74	Howard	60	178.9	93
Cottle	0	0.0	0	Hudspeth	2	52.5	2
Crane	0	0.0	1	Hunt	80	88.9	163
Crockett	1	21.8	3	Hutchinson	7	29.7	18
Crosby	3	45.9	6	Irion	0	0.0	1
Culberson	1	36.9	2	Jack	3	33.0	8
Dallam	4	59.2	10	Jackson	5	32.6	15
Dallas	13,883	569.9	23,526	Jasper	17	47.4	45
Dawson	6	40.6	11	Jeff Davis	1	35.1	2
Deaf Smith	10	48.7	17	Jefferson	757	311.7	1,351
Delta	2	37.5	2	Jim Hogg	1	18.2	5
Denton	686	97.2	1,039	Jim Wells	16	37.7	38
DeWitt	9	43.8	21	Johnson	133	78.5	231
Dickens	1	35.8	4	Jones	14	67.4	21
Dimmit	6	61.5	12	Karnes	8	47.5	12

\* Rates represent cases per 100,000 population.

**People Living with HIV and Cumulative Diagnoses by County of Residence  
Through December 31, 2010**

County	People Living with HIV		Cumulative HIV Diagnoses	County	People Living with HIV		Cumulative HIV Diagnoses
	Cases	Rate*	Cases		Cases	Rate*	Cases
Kaufman	120	111.5	208	Real	1	29.8	1
Kendall	19	53.7	28	Red River	8	55.6	17
Kenedy	0	0.0	0	Reeves	30	271.1	41
Kent	0	0.0	0	Refugio	1	14.0	5
Kerr	24	51.3	59	Roberts	0	0.0	0
Kimble	2	41.8	2	Robertson	21	124.3	42
King	0	0.0	0	Rockwall	47	55.1	69
Kinney	4	116.0	7	Runnels	6	51.0	10
Kleberg	22	68.8	53	Rusk	46	92.0	80
Knox	1	23.6	2	Sabine	11	101.4	21
Lamar	51	101.3	85	San Augustine	8	83.5	23
Lamb	7	44.9	12	San Jacinto	22	78.2	39
Lampasas	5	22.1	17	San Patricio	40	56.4	99
La Salle	7	116.1	10	San Saba	2	31.3	5
Lavaca	13	66.4	15	Schleicher	1	31.3	3
Lee	13	71.7	18	Scurry	3	17.4	7
Leon	14	82.5	24	Shackelford	1	28.9	2
Liberty	93	113.6	162	Shelby	34	127.8	72
Limestone	20	85.5	34	Sherman	4	119.0	7
Lipscomb	0	0.0	1	Smith	309	149.4	516
Live Oak	7	56.4	11	Somervell	4	46.5	6
Llano	5	25.8	15	Starr	30	44.5	49
Loving	0	0.0	0	Stephens	3	29.2	5
Lubbock	294	109.7	581	Sterling	0	0.0	0
Lynn	5	84.3	7	Stonewall	0	0.0	1
McCulloch	4	46.1	11	Sutton	1	21.6	1
McLennan	327	140.0	608	Swisher	2	24.4	5
McMullen	0	0.0	0	Tarrant	3,746	205.2	6,467
Madison	21	144.9	37	Taylor	144	109.7	282
Marion	18	163.2	26	Terrell	0	0.0	0
Martin	2	37.7	6	Terry	5	43.4	7
Mason	1	26.1	2	Throckmorton	0	0.0	1
Matagorda	51	131.3	85	Titus	25	78.1	49
Maverick	43	77.9	81	Tom Green	84	81.0	155
Medina	17	37.2	38	Travis	3,791	381.9	6,624
Menard	0	0.0	1	Trinity	23	151.5	39
Midland	131	101.0	244	Tyler	22	99.4	34
Milam	29	109.6	50	Upshur	30	78.3	58
Mills	0	0.0	0	Upton	2	63.5	2
Mitchell	4	40.8	10	Uvalde	10	35.9	23
Montague	7	34.6	20	Val Verde	14	28.0	36
Montgomery	363	76.2	614	Van Zandt	25	46.6	62
Moore	10	47.4	18	Victoria	89	99.8	153
Morris	11	81.3	23	Walker	65	99.6	120
Motley	0	0.0	0	Waller	59	139.5	92
Nacogdoches	98	152.4	156	Ward	6	60.5	12
Navarro	69	133.7	120	Washington	27	80.6	41
Newton	5	33.6	12	Webb	321	124.6	520
Nolan	12	83.3	24	Wharton	51	116.5	92
Nueces	476	147.0	1,014	Wheeler	1	19.5	2
Ochiltree	3	30.0	4	Wichita	120	94.0	292
Oldham	0	0.0	0	Wilbarger	16	104.7	35
Orange	86	101.3	183	Willacy	41	186.1	60
Palo Pinto	18	60.7	24	Williamson	305	70.1	436
Panola	23	95.4	36	Wilson	18	39.5	33
Parker	83	70.1	121	Winkler	4	60.9	10
Parmer	8	78.2	11	Wise	25	40.6	49
Pecos	4	22.4	12	Wood	37	82.4	63
Polk	57	114.1	116	Yoakum	5	60.5	6
Potter	270	213.7	536	Young	3	16.1	16
Presidio	3	34.6	5	Zapata	6	39.3	10
Rains	3	27.4	7	Zavala	9	70.1	13
Randall	35	29.1	77	TDCJ **	3,753		5,464
Reagan	0	0.0	0	<b>Total</b>	<b>65,077</b>	<b>256.5</b>	<b>113,329</b>

\* Rates represent cases per 100,000 population.

\*\* Texas Department of Criminal Justice.

**People Living with HIV by Sex, Race/Ethnicity and Age Group  
Through December 31, 2010**

	People Living with HIV	
	Cases	Rate*
<b>Sex</b>		
Male	50,686	397.7
Female	14,391	113.9
Unknown	0	
<b>Race</b>		
White	21,876	191.2
Black	24,938	852.4
Hispanic	17,274	175.4
Other	682	58.9
Unknown	307	
<b>Age Group**</b>		
0 - 9	141	3.7
10 - 14	155	9.3
15 - 19	518	28.6
20 - 24	2,630	138.9
25 - 29	4,778	240.7
30 - 34	6,878	360.0
35 - 39	8,225	427.4
40 - 44	10,920	610.9
45+	30,832	361.1
Unknown	0	
<b>Total</b>	<b>65,077</b>	<b>256.5</b>

\* Rates represent cases per 100,000 population.

\*\* Age as of December 31, 2010

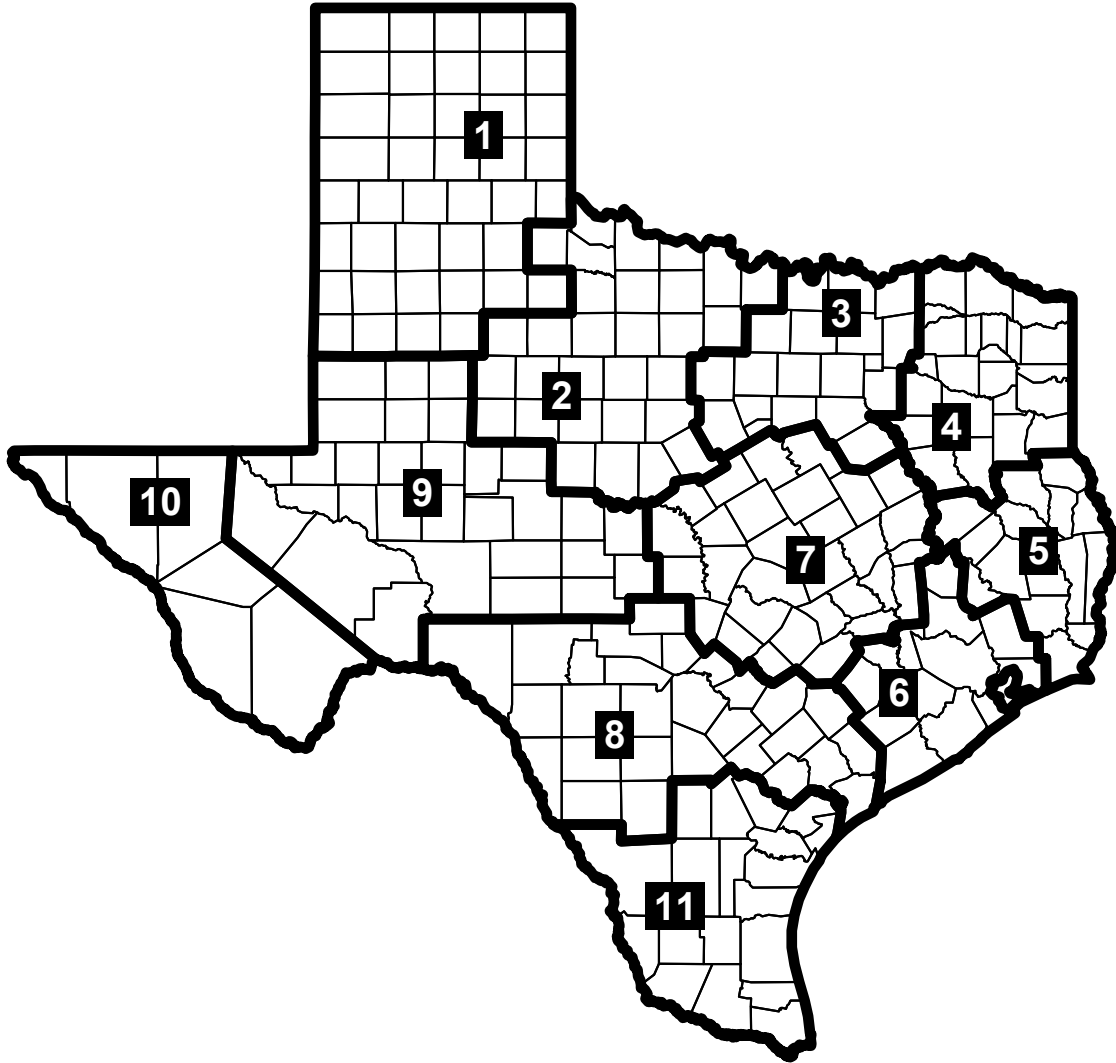
**People Living with HIV by Age Group, Race/Ethnicity and Sex  
Through December 31, 2010**

Age Group*	Male						Female						Unk Sex	Total	Percent
	White	Black	Hisp.	Other	Unk	Total	White	Black	Hisp.	Other	Unk	Total			
0 - 9	7	39	24	1	2	73	10	40	16	1	1	68	0	141	0.2%
10 - 14	11	45	19	1	-	76	10	45	23	1	-	79	0	155	0.2%
15 - 19	44	205	80	1	1	331	12	133	38	1	3	187	0	518	0.8%
20 - 24	313	1,055	562	17	14	1,961	106	418	134	6	5	669	0	2,630	4.0%
25 - 29	720	1,500	1,233	34	28	3,515	159	824	251	12	17	1,263	0	4,778	7.3%
30 - 34	1,294	1,673	1,829	64	24	4,884	324	1,254	373	23	20	1,994	0	6,878	10.6%
35 - 39	1,817	1,851	2,131	110	22	5,931	331	1,434	487	31	11	2,294	0	8,225	12.6%
40 - 44	3,150	2,597	2,750	121	31	8,649	437	1,318	475	27	14	2,271	0	10,920	16.8%
45+	11,766	7,416	5,814	185	85	25,266	1,365	3,091	1,035	46	29	5,566	0	30,832	47.4%
Unk	-	-	-	-	-	0	-	-	-	-	-	0	0	0	0.0%
<b>Total</b>	<b>19,122</b>	<b>16,381</b>	<b>14,442</b>	<b>534</b>	<b>207</b>	<b>50,686</b>	<b>2,754</b>	<b>8,557</b>	<b>2,832</b>	<b>148</b>	<b>100</b>	<b>14,391</b>	<b>0</b>	<b>65,077</b>	
<b>Percent</b>	<b>37.7%</b>	<b>32.3%</b>	<b>28.5%</b>	<b>1.1%</b>	<b>0.4%</b>		<b>19.1%</b>	<b>59.5%</b>	<b>19.7%</b>	<b>1.0%</b>	<b>0.7%</b>				
<b>Percent Male</b>						<b>77.9%</b>	<b>Percent Female</b>						<b>22.1%</b>		

Total White	21,876	33.6%
Total Black	24,938	38.3%
Total Hispanic	17,274	26.5%
Total Other	682	1.0%
Total Unknown	307	0.5%
<b>Total</b>	<b>65,077</b>	

\* Age as of December 31, 2010

# TEXAS PUBLIC HEALTH REGIONS



**HIV Infection and AIDS Diagnoses by Public Health Region, 2010**

Public Health Region	HIV Infection*		People Living with HIV**		Cumulative HIV Diagnoses**	AIDS*	
	Cases	Rate †	Cases	Rate †	Cases	Cases	Rate †
Region 1	38	4.5	743	88.5	1,490	5	0.6
Region 2	22	3.9	434	77.8	895	24	4.3
Region 3	1,345	19.3	20,141	288.5	33,759	732	10.5
Region 4	113	10.1	1,445	129.3	2,475	34	3.0
Region 5	106	13.8	1,346	175.5	2,462	60	7.8
Region 6	1,406	23.0	22,063	360.4	40,896	923	15.1
Region 7	345	11.8	5,697	194.5	9,768	143	4.9
Region 8	311	12.2	4,870	190.6	8,551	194	7.6
Region 9	51	9.2	497	89.8	927	21	3.8
Region 10	119	14.9	1,617	202.0	2,499	47	5.9
Region 11	209	9.7	2,471	114.9	4,143	79	3.7
TDCJ ‡	177		3,753		5,464	29	
<b>State Total</b>	<b>4,242</b>	<b>16.7</b>	<b>65,077</b>	<b>256.5</b>	<b>113,329</b>	<b>2,291</b>	<b>9.0</b>

\* 2010 diagnoses.

\*\* Through December 31, 2010.

† Rates represent cases per 100,000 population.

‡ Texas Department of Criminal Justice.

### HIV Infection and AIDS Diagnoses by City of Residence\*, 2010

City of Residence	HIV Infection	AIDS
Houston	1,119	749
Dallas	696	395
San Antonio	247	156
Austin	181	82
Fort Worth	129	47
El Paso	113	45
Irving	59	31
Arlington	56	28
Beaumont	53	23
Garland	49	31
Humble	33	16
Plano	30	15
Abilene	29	13
Huntsville	28	8
Mesquite	28	13
Laredo	27	14
Brownsville	25	7
Longview	24	5
Grand Prairie	23	10
Mcallen	23	10
Corpus Christi	21	9
Beeville	20	-
Dayton	20	1
Lubbock	20	2
Richardson	19	9
Carrollton	19	11
Killeen	19	5
Waco	19	7
Edinburg	17	6
Katy	17	8
Spring	17	16
Tyler	17	4
Desoto	16	12
Mckinney	16	8
Denton	15	4
Harlingen	15	5
Pasadena	15	8
Eules	15	6
Tennessee Colony	15	-
Mission	14	10
Pearland	13	5
Round Rock	13	2
Temple	13	2
Lewisville	13	13
Big Spring	12	4
Missouri City	12	6
Amarillo	12	2
Cedar Hill	12	6
Lancaster	12	9
Port Arthur	12	11
Texarkana	12	4
Richmond	12	5
<b>Total</b>	<b>4,242</b>	<b>2,291</b>

\* Top cities listed by total number of HIV Infection cases diagnosed.

### 25 Counties with the Highest Cases Numbers, 2010

Rank	HIV Infection		AIDS		People Living with HIV	
	County	Cases	County	Cases	County	Cases
1	Harris	1,234	Harris	821	Harris	19,733
2	Dallas	908	Dallas	511	Dallas	13,883
3	Bexar	253	Bexar	165	Bexar	4,316
4	Tarrant	227	Tarrant	95	Travis	3,791
5	Travis	197	Travis	87	Tarrant	3,746
6	El Paso	117	El Paso	47	El Paso	1,609
7	Collin	91	Collin	47	Collin	924
8	Hidalgo	82	Jefferson	38	Hidalgo	874
9	Jefferson	59	Denton	37	Jefferson	757
10	Cameron	52	Hidalgo	32	Denton	686
11	Denton	51	Fort Bend	27	Galveston	656
12	Bell	49	Galveston	22	Fort Bend	614
13	Galveston	48	Brazoria	17	Cameron	579
14	Fort Bend	45	Montgomery	16	Nueces	476
15	Brazoria	29	Cameron	15	Bell	389
16	Webb	27	Webb	14	Montgomery	363
17	Gregg	25	Taylor	10	Gregg	330
18	Montgomery	24	Bell	10	McLennan	327
19	Nueces	22	Nueces	9	Webb	321
20	McLennan	22	McLennan	9	Smith	309
21	Smith	20	Brazos	8	Brazoria	308
22	Lubbock	19	Navarro	7	Williamson	305
23	Williamson	14	Maverick	7	Lubbock	294
24	Brazos	13	Walker	6	Potter	270
25	Bowie	13	Midland	6	Brazos	254

### 25 Counties with the Highest Case Rates, 2010

Rank	HIV Infection		AIDS		People Living with HIV	
	County	Rate*	County	Rate*	County	Rate*
1	Borden	130.2	Borden	130.2	Dallas	569.9
2	Reeves	81.3	Glasscock	65.6	Harris	481.8
3	Concho	77.9	Foard	63.2	Travis	381.9
4	Frio	50.1	Edwards	45.2	Jefferson	311.7
5	Edwards	45.2	Marion	27.2	Reeves	271.1
6	Madison	41.4	Reeves	27.1	Gregg	268.3
7	Dallas	37.3	Baylor	25.0	Garza	267.2
8	Marion	36.3	Dallas	21.0	Bexar	263.7
9	Howard	32.8	Harris	20.0	Houston	245.0
10	Upton	31.8	Frio	16.7	Galveston	223.2
11	Harris	30.1	Jefferson	15.6	Potter	213.7
12	Kinney	29.0	Refugio	14.0	El Paso	208.1
13	Refugio	28.1	Red River	13.9	Concho	207.7
14	Franklin	27.4	Nolan	13.9	Tarrant	205.2
15	Hudspeth	26.2	Madison	13.8	Willacy	186.1
16	Childress	25.2	Navarro	13.6	Howard	178.9
17	Jefferson	24.3	Maverick	12.7	Marion	163.2
18	Willacy	22.7	Yoakum	12.1	Cherokee	160.0
19	Gregg	20.3	Karnes	11.9	Anderson	153.8
20	Travis	19.8	Hamilton	11.2	Nacogdoches	152.4
21	Caldwell	18.1	Austin	10.4	Trinity	151.5
22	Calhoun	17.2	Bexar	10.1	Smith	149.4
23	Bell	16.8	Walker	9.2	Nueces	147.0
24	Galveston	16.3	Wharton	9.1	Madison	144.9
25	Bastrop	15.9	Willacy	9.1	Brazos	144.7

\* Rates represent cases per 100,000 population.



### HIV Infection and AIDS Diagnoses by Transmission Category, 2010

Adult/Adolescent Transmission Category*	HIV Infection			AIDS		
	Male	Female	Total	Male	Female	Total
Male-to-Male Sexual Contact (MMS)	2,601	0	2,601	1,266	0	1,266
Intravenous Drug Use (IDU)	229	147	376	165	103	269
MMS & IDU	127	0	127	104	0	104
Heterosexual Contact	346	783	1,129	223	421	644
Other**	0	0	0	0	0	0
<b>Adult Total</b>	<b>3,303</b>	<b>930</b>	<b>4,233</b>	<b>1,759</b>	<b>524</b>	<b>2,283</b>
<b>Pediatric Transmission Category Total*</b>	3	6	9	4	4	8
<b>Adult/Pediatric Total</b>	<b>3,306</b>	<b>936</b>	<b>4,242</b>	<b>1,763</b>	<b>528</b>	<b>2,291</b>

\* Transmission categories are estimated, column values may not sum to the column total.

\*\* Adult Other includes received clotting factor, transfusion/transplant, other and unknown.

### People Living with HIV and Cumulative Diagnoses by Transmission Category Through December 31, 2010

Adult/Adolescent Transmission Category*	People Living with HIV			Cumulative HIV Diagnoses		
	Male	Female	Total	Male	Female	Total
Male-to-Male Sexual Contact (MMS)	35,816	0	35,816	64,623	0	64,623
Intravenous Drug Use (IDU)	5,461	3,358	8,820	10,891	6,004	16,895
MMS & IDU	4,159	0	4,159	8,848	0	8,848
Heterosexual Contact	4,829	10,667	15,495	7,121	14,115	21,235
Other**	97	47	144	577	200	777
<b>Adult Total</b>	<b>50,362</b>	<b>14,072</b>	<b>64,434</b>	<b>92,060</b>	<b>20,319</b>	<b>112,379</b>
<b>Pediatric Transmission Category Total*</b>	324	319	643	507	443	950
<b>Adult/Pediatric Total</b>	<b>50,686</b>	<b>14,391</b>	<b>65,077</b>	<b>92,567</b>	<b>20,762</b>	<b>113,329</b>

\* Transmission categories are estimated, column values may not sum to the column total.

\*\* Adult Other includes received clotting factor, transfusion/transplant, other and unknown.

<b>HIV Infection and AIDS Diagnoses by National Origin, 2010</b>				
<b>National Origin</b>	<b>HIV Infection</b>	<b>%</b>	<b>AIDS</b>	<b>%</b>
<b>U.S.</b>	2,961	69.8%	1,556	67.9%
<b>U.S. Dependency</b>	9	0.2%	4	0.2%
<b>Unknown</b>	707	16.7%	415	18.1%
<b>Foreign Country</b>	565	13.3%	316	13.8%
<b>State Total</b>	<b>4,242</b>	<b>100.0%</b>	<b>2,291</b>	<b>100.0%</b>
<b>Most Frequent Foreign Countries of National Origin*</b>				
<b>Country</b>	<b>HIV Infection</b>		<b>AIDS</b>	
Mexico	286		161	
Honduras	43		28	
El Salvador	30		24	
Guatemala	19		11	
Ethiopia	17		9	
Nigeria	19		6	
Kenya	11		5	
Cameroon	8		7	
India	10		4	
Other	8		3	
Congo	7		4	
Zimbabwe	6		4	
South Africa	6		4	
Myanmar	7		2	
Burundi	7		2	
Vietnam	5		3	
Cuba	6		2	
Nicaragua	4		2	
Panama	3		2	
Jamaica	5		-	
Gambia	3		2	
Zambia	2		2	
Tanzania, United Republic of	3		1	
Malaysia	3		1	
Colombia	3		1	
Brazil	3		1	

\* Foreign countries of national origin listed by total number of HIV Infection and AIDS cases diagnosed combined.