



The Texas STD Surveillance Report is an annual report generated by:

Texas Department of State Health Services
TB/HIV/STD Epidemiology and Surveillance Branch, MC 1873
P.O. Box 149347
Austin, Texas 78714
(512) 533-3000

Important Notes on the Data:

This report describes cases reported to the Texas Department of State Health Services Surveillance Program from January 1 to December 31, 2011, as well as historical data. The data are presented by date of report; therefore the data may be affected by reporting anomalies that are not necessarily linked to real changes in disease incidence. Population numbers used to calculate rates are provided by the Texas State Data Center, Population Estimates and Projections Program.

TABLE OF CONTENTS

Table of Contents.....	3
Reference: Terms and Resources	4

Chlamydia

• Chlamydia by County of Residence, 2004-2011	5
• Graph: Texas Chlamydia by Year of Report, 2004-2011	9
• Chlamydia by Sex, Race/Ethnicity and Age Group, 2004-2011	9
• Chlamydia by Age Group, Race/Ethnicity and Sex, 2011	10
• Graph: Texas Chlamydia by Race and Year of Report, 2004-2011	10
• Graph: Texas Chlamydia by Sex and Year of Report, 2004-2011	11
• Graph: Texas Chlamydia by Age Group and Year of Report, 2011	11

Gonorrhea

• Gonorrhea by County of Residence, 2004-2011	12
• Graph: Texas Gonorrhea by Year of Report, 2004-2011	16
• Gonorrhea by Sex, Race/Ethnicity and Age Group, 2004-2011	16
• Gonorrhea by Age Group, Race/Ethnicity and Sex, 2011	17
• Graph: Texas Gonorrhea by Race and Year of Report, 2004-2011	17
• Graph: Texas Gonorrhea by Sex and Year of Report, 2004-2011	18
• Graph: Texas Gonorrhea by Age Group and Year of Report, 2011	18

Primary and Secondary Syphilis

• Primary and Secondary Syphilis by County of Residence, 2004-2011	19
• Graph: Texas Primary and Secondary Syphilis by Year of Report, 2004-2011	23
• Primary and Secondary Syphilis by Sex, Race/Ethnicity and Age Group, 2004-2011	23
• Primary and Secondary Syphilis by Age Group, Race/Ethnicity and Sex, 2011	24
• Graph: Texas P&S Syphilis by Race and Year of Report, 2004-2011	24
• Graph: Texas P&S Syphilis by Sex and Year of Report, 2004-2011	25
• Graph: Texas P&S Syphilis by Age Group and Year of Report, 2011	25

Total Syphilis

• Total Syphilis by County of Residence, 2004-2011	26
• Graph: Texas Total Syphilis by Year of Report, 2004-2011	30
• Total Syphilis by Sex, Race/Ethnicity and Age Group, 2004-2011	30
• Total Syphilis by Age Group, Race/Ethnicity and Sex, 2011	31
• Graph: Texas Total Syphilis by Race and Year of Report, 2004-2011	31
• Graph: Texas Total Syphilis by Sex and Year of Report, 2004-2011	32
• Graph: Texas Total Syphilis by Age Group and Year of Report, 2011	32

Congenital Syphilis

• Congenital Syphilis by Race/Ethnicity, 2004-2011	33
• Graph: Texas Congenital Syphilis by Year of Report, 2004-2011	33

Additional Geographic Breakdowns and Rankings

• STD Cases and Rates by Public Health Region, 2011	34
• STD Cases by City of Residence, 2011	35
• 25 Counties with the Highest STD Case Numbers, 2011	36
• 25 Counties with the Highest STD Case Rates, 2011	36

Definitions:

Chlamydia, gonorrhea, and syphilis infection are defined by the Centers for Disease Control and Prevention of the United States Public Health Service. The publication designating the most current definition may be found at:

<http://www.cdc.gov/mmwr/preview/mmwrhtml/00047449.htm>

P&S Syphilis is occasionally used as an abbreviation for Primary and Secondary Syphilis in this report.

Reporting Rules:

The rules and regulations for reporting sexually transmitted diseases have been adopted in the Texas Administrative Code, Chapter 97. The provisions for this chapter are issued under the Communicable Disease Prevention and Control Act, Health and Safety Code, Chapter 81, which provides the Board of Health with the authority to adopt rules concerning the reporting of communicable diseases; and §12.001, which provides the Texas Board of Health with the authority to adopt rules for the performance of every duty imposed by law on the Texas Board of Health, the Texas Department of State Health Services, and the Commissioner of Health. A copy of the rules can be obtained from the Texas Department of State Health Services at:

<http://www.dshs.state.tx.us/hivstd/healthcare/reporting.shtm>

The *Texas STD Surveillance Report* can be obtained at:

<http://www.dshs.state.tx.us/hivstd/reports/default.shtm>

Information on how to report HIV/AIDS and STD cases can be obtained by calling your local or regional health department, or by calling 1-800-705-8868.

Chlamydia Cases and Rates by County of Residence, 2004-2011

County	2004		2005		2006		2007		2008		2009		2010		2011	
	Cases	Rate*	Cases	Rate*	Cases	Rate*	Cases	Rate*	Cases	Rate*	Cases	Rate*	Cases	Rate*	Cases	Rate*
Anderson	127	226.7	138	246.6	155	275.8	153	271.5	148	262.2	86	149.3	158	273.1	185	318.5
Andrews	47	364.5	44	344.7	31	235.7	23	172.7	38	273.2	67	471.9	54	377.6	72	499.5
Angelina	261	319.1	268	326.6	231	280.3	242	292.5	226	272.0	272	321.5	375	440.6	383	447.3
Aransas	78	323.8	77	314.0	70	281.1	78	309.1	105	414.6	114	421.9	137	497.6	106	377.9
Archer	10	108.0	11	119.9	15	165.5	15	164.2	14	151.4	9	95.1	16	168.4	8	83.7
Armstrong	2	92.7	0	0.0	1	46.1	1	45.8	3	136.8	5	220.6	4	175.5	3	130.8
Atascosa	129	302.6	139	331.8	86	202.8	110	255.4	103	235.0	106	234.6	141	307.3	136	291.8
Austin	29	112.3	12	45.9	24	89.1	42	155.0	52	190.7	56	198.5	70	243.6	53	181.0
Bailey	18	274.2	18	274.8	24	368.4	29	462.5	22	350.2	31	487.3	34	537.4	14	222.3
Bandera	20	102.5	21	107.5	14	70.8	5	24.7	19	93.5	24	114.8	29	136.4	20	92.4
Bastrop	128	187.4	132	189.9	150	209.1	161	222.6	257	350.2	188	237.9	205	250.9	280	331.5
Baylor	9	221.9	4	99.5	3	74.2	7	173.0	11	279.0	4	100.0	7	175.2	9	225.8
Bee	130	391.4	115	346.3	81	243.9	116	350.5	124	374.4	152	447.6	149	436.9	170	496.7
Bell	1,961	778.2	2,229	855.6	2,418	898.6	2,931	1,066.3	3,161	1,118.8	3,420	1,195.6	4,007	1,375.2	3,933	1,325.7
Bexar	6,971	468.8	7,421	491.3	7,632	492.3	8,087	512.0	8,869	548.0	10,440	647.3	11,455	699.9	11,828	712.2
Blanco	8	87.0	2	21.3	6	63.9	6	63.8	15	158.6	16	157.8	17	164.3	18	170.2
Borden	0	0.0	1	139.1	0	0.0	0	0.0	1	143.3	0	0.0	1	130.2	1	129.9
Bosque	26	145.1	30	165.2	27	147.8	21	114.4	34	185.9	32	180.9	40	225.0	37	207.1
Bowie	320	350.0	359	389.1	370	396.6	382	409.5	413	442.4	402	433.9	421	453.0	356	381.9
Brazoria	532	196.5	478	172.6	451	157.3	645	219.9	717	238.2	749	241.2	1,045	327.5	1,058	322.8
Brazos	615	381.3	700	435.2	751	449.1	725	428.3	759	435.5	860	496.2	1,009	574.9	990	556.4
Brewster	27	292.2	24	260.8	23	249.2	36	388.9	43	463.4	40	425.2	20	210.9	40	419.9
Briscoe	1	60.4	0	0.0	1	63.6	2	126.9	0	0.0	0	0.0	1	53.7	2	107.1
Brooks	42	533.5	39	511.3	23	297.6	30	389.4	32	414.1	48	608.4	58	737.4	48	612.5
Brown	82	214.3	81	212.1	76	196.8	70	181.0	127	328.1	149	375.0	154	385.8	144	359.2
Burleson	42	240.0	40	224.3	53	292.8	45	248.0	41	225.8	45	243.7	56	299.6	52	274.9
Burnet	53	138.6	78	197.5	76	187.0	59	138.9	86	199.5	88	191.0	95	199.7	107	217.9
Caldwell	74	208.5	92	259.7	86	241.8	102	285.3	136	371.1	150	394.4	189	488.1	212	537.9
Calhoun	46	222.7	33	160.2	34	163.1	26	124.4	48	230.4	43	186.6	59	253.6	65	276.6
Callahan	13	97.4	20	148.2	14	103.6	17	123.6	14	101.5	16	111.4	24	165.2	28	190.6
Cameron	1,306	351.0	1,060	280.4	994	255.2	1,084	277.1	1,205	306.3	1,344	328.6	1,427	341.9	1,634	384.0
Camp	31	248.4	32	253.3	39	306.9	36	281.5	44	342.0	39	295.1	37	276.1	45	330.6
Carson	8	124.8	5	77.1	4	61.6	2	31.1	2	31.4	9	133.3	6	88.6	9	132.7
Cass	65	214.1	91	300.1	84	274.8	76	248.9	76	250.4	74	241.5	87	284.0	87	284.2
Castro	36	468.6	29	378.2	31	410.4	30	397.6	26	343.2	28	374.2	25	338.6	17	233.1
Chambers	26	88.1	18	56.6	10	30.9	33	100.2	23	69.6	23	66.1	33	92.1	18	48.8
Cherokee	177	367.8	141	290.8	136	281.5	159	325.5	144	291.5	153	308.1	198	396.1	220	437.0
Childress	17	222.7	8	104.0	16	207.0	12	155.7	14	181.8	11	139.3	17	214.2	27	339.7
Clay	7	61.5	8	71.0	6	53.8	13	117.2	14	126.5	8	71.4	17	151.5	9	80.2
Cochran	6	170.4	8	223.6	6	167.1	15	428.8	15	428.4	12	343.0	10	287.6	10	289.5
Coke	23	590.3	16	403.1	24	615.9	7	183.4	11	286.2	9	230.2	7	178.6	6	152.7
Coleman	14	153.8	9	101.5	15	169.3	15	172.7	11	126.9	19	212.0	17	190.2	16	179.7
Collin	878	140.7	873	133.1	958	137.6	1,184	161.9	1,486	195.5	1,653	206.1	1,897	225.2	2,105	238.0
Collingsworth	15	495.0	11	361.7	7	238.7	9	298.4	12	397.5	5	158.2	14	443.7	8	254.7
Colorado	28	131.5	25	118.8	36	166.4	47	216.7	51	234.2	43	194.8	47	211.2	54	240.6
Comal	126	138.6	133	139.2	182	178.4	149	140.5	143	129.9	174	150.0	217	179.3	258	204.5
Comanche	9	64.1	18	128.8	9	63.8	7	49.4	14	98.7	17	119.5	25	175.2	22	153.8
Concho	5	128.4	8	207.9	2	52.6	0	0.0	1	26.8	6	155.1	9	233.7	5	130.8
Cooke	64	165.7	72	185.4	71	178.2	83	207.2	81	202.5	75	185.6	121	296.2	100	242.3
Coryell	138	185.5	156	206.7	172	226.3	155	202.6	226	296.5	212	262.7	271	333.7	335	410.1
Cottle	2	121.1	4	241.8	7	430.2	3	182.9	0	0.0	1	53.4	0	0.0	3	160.0
Crane	6	151.4	0	0.0	6	155.7	5	127.8	7	173.9	10	234.0	8	186.1	10	230.9
Crockett	12	294.2	10	248.0	5	125.4	5	119.4	15	355.4	8	176.0	13	283.1	21	454.4
Crosby	17	259.2	24	363.0	28	423.5	26	402.4	28	444.2	27	409.1	32	489.7	31	479.1
Culberson	8	289.4	8	297.2	9	340.1	6	234.4	4	159.0	3	109.8	7	258.6	8	298.0
Dallam	16	254.5	8	128.2	12	192.2	23	367.8	13	206.0	21	312.1	29	429.1	31	455.7
Dallas	8,539	372.8	9,816	426.7	8,529	364.5	12,227	517.0	13,495	565.1	14,009	580.7	15,498	636.2	16,848	684.8
Dawson	39	274.9	57	398.2	57	401.6	40	285.4	46	330.3	68	458.5	58	392.1	82	555.9
Deaf Smith	81	435.7	94	505.3	86	461.4	97	519.3	80	426.4	64	314.2	82	399.1	62	299.5
Delta	8	149.4	5	94.8	13	246.8	9	168.4	8	146.0	7	131.2	11	206.4	13	244.5
Denton	686	128.6	779	139.5	893	151.3	1,188	193.2	1,243	195.0	1,328	196.7	1,685	238.6	1,860	252.1
DeWitt	49	240.6	44	213.6	49	239.8	64	315.0	57	282.7	35	170.6	64	311.1	78	378.3
Dickens	2	70.3	2	70.2	2	74.1	0	0.0	4	151.9	8	285.0	2	71.6	1	35.9
Dimmit	32	314.8	43	426.5	36	358.8	45	454.0	44	441.6	37	376.9	37	379.1	57	588.4

* Rates represent cases per 100,000 population.

Chlamydia Cases and Rates by County of Residence, 2004-2011

County	2004		2005		2006		2007		2008		2009		2010		2011	
	Cases	Rate*	Cases	Rate*	Cases	Rate*	Cases	Rate*	Cases	Rate*	Cases	Rate*	Cases	Rate*	Cases	Rate*
Donley	9	225.3	9	230.7	7	179.2	12	302.0	6	152.1	12	310.0	28	723.3	16	413.1
Duval	32	245.9	25	194.1	31	246.0	41	331.2	18	146.9	48	395.0	46	382.0	46	385.5
Eastland	21	113.6	24	130.0	24	130.7	17	93.0	14	76.9	19	101.3	31	164.9	38	201.7
Ector	514	412.2	564	452.8	527	414.3	522	407.1	632	483.0	676	513.9	830	624.9	813	606.3
Edwards	2	97.1	1	48.6	0	0.0	3	158.6	2	104.1	2	90.5	6	271.1	9	406.1
Ellis	248	191.7	302	227.1	264	189.8	353	247.5	392	265.7	438	285.0	461	289.4	505	305.9
El Paso	2,509	350.9	2,647	364.6	2,573	346.2	2,954	395.2	3,344	446.7	3,421	447.9	4,356	563.4	4,512	576.6
Erath	103	304.5	119	350.0	97	282.7	108	307.3	90	255.1	120	306.5	74	186.4	127	316.0
Falls	140	764.6	209	1,154.1	164	909.3	76	425.0	90	509.7	94	501.7	115	613.5	101	538.3
Fannin	55	164.7	86	254.1	58	170.4	50	145.4	70	203.8	80	232.4	104	299.2	75	213.4
Fayette	35	151.9	29	126.0	37	155.7	38	158.7	34	141.0	34	136.9	39	154.6	54	210.7
Fisher	6	143.9	5	117.5	2	47.5	10	239.8	12	289.3	7	166.9	9	216.1	17	410.0
Floyd	16	220.9	19	268.2	23	316.7	20	275.8	19	265.9	19	272.2	28	405.2	21	307.3
Foard	2	131.8	3	202.8	4	267.9	2	136.3	3	207.6	0	0.0	0	0.0	0	0.0
Fort Bend	481	111.0	418	91.7	638	131.0	894	175.0	1,198	224.5	1,099	199.3	1,406	243.5	1,178	194.8
Franklin	13	132.8	17	169.2	25	243.4	15	141.6	20	189.6	43	397.9	37	337.7	34	306.1
Freestone	30	159.2	43	225.7	41	211.5	29	148.2	41	207.5	39	193.5	62	303.5	61	294.7
Frio	36	222.8	46	280.9	56	343.1	50	305.3	61	373.5	81	454.9	85	473.4	76	420.0
Gaines	17	116.3	57	382.6	23	152.1	14	92.3	19	123.5	43	264.2	27	164.0	34	204.0
Galveston	975	359.9	826	300.0	912	323.3	1,122	393.1	1,022	354.7	1,015	351.0	1,138	387.1	1,174	392.9
Garza	9	178.9	19	384.1	20	394.1	13	256.8	23	453.6	10	192.2	15	286.3	15	284.1
Gillespie	18	79.5	21	89.2	39	161.9	20	82.6	30	123.6	49	193.6	41	158.5	28	105.9
Glasscock	2	173.0	0	0.0	0	0.0	1	82.0	1	80.8	1	66.1	0	0.0	2	130.4
Goliad	12	168.8	14	197.1	9	125.1	8	110.3	9	123.8	16	209.7	13	168.6	18	231.3
Gonzales	70	358.4	65	333.5	76	394.7	65	338.6	93	483.8	97	480.4	86	422.2	91	443.0
Gray	49	221.1	52	234.7	63	280.8	66	292.9	45	198.4	85	372.1	47	205.6	67	292.8
Grayson	236	203.0	224	190.9	224	189.1	248	209.1	305	256.8	287	239.8	372	308.0	392	321.4
Gregg	577	504.7	584	508.3	619	525.7	674	570.4	674	570.3	795	653.9	876	712.2	998	801.8
Grimes	81	328.4	79	318.2	88	354.8	62	249.1	60	236.5	82	313.6	91	344.3	131	490.7
Guadalupe	165	160.9	157	150.6	215	193.5	238	204.5	249	210.8	265	213.1	334	259.0	333	249.0
Hale	252	694.0	156	432.1	187	520.6	197	554.7	192	542.9	188	505.7	217	584.0	200	538.6
Hall	7	187.5	6	160.8	10	273.2	7	195.4	6	169.0	5	130.3	15	390.6	13	338.4
Hamilton	5	60.5	13	156.6	13	153.3	7	82.3	16	185.9	9	101.5	8	89.5	12	133.1
Hansford	8	149.3	4	75.3	6	117.2	8	156.4	2	38.7	6	114.9	10	191.5	4	76.6
Hardeman	4	85.7	5	110.7	10	225.4	5	114.2	8	184.4	9	194.8	11	238.7	11	239.1
Hardin	75	149.3	60	119.5	45	89.3	64	125.1	73	141.3	95	183.2	93	178.2	138	263.0
Harris	12,056	330.7	11,164	302.2	11,825	308.7	13,469	346.1	16,549	417.3	16,733	416.6	21,718	530.2	21,500	514.8
Harrison	183	291.8	187	295.3	176	276.2	192	299.5	174	270.9	173	257.6	263	388.6	335	491.2
Hartley	2	37.3	2	36.8	3	54.3	1	17.8	3	52.2	1	17.3	4	68.8	2	34.3
Haskell	12	202.1	5	88.6	9	159.0	10	178.7	11	197.5	18	304.5	18	305.1	16	271.8
Hays	567	470.2	674	534.0	880	657.1	825	590.6	923	625.5	854	545.3	915	557.7	1,098	639.6
Hemphill	4	120.0	4	116.2	4	116.3	5	141.7	5	142.0	11	307.2	5	138.9	12	331.9
Henderson	129	165.9	146	185.7	158	199.2	155	195.8	156	197.5	149	185.2	189	232.4	208	253.1
Hidalgo	1,666	253.2	1,606	236.9	1,796	253.6	2,178	302.5	2,745	378.6	3,132	407.6	3,168	399.4	3,339	408.4
Hill	44	128.9	53	154.4	70	200.7	78	221.8	119	334.7	92	251.9	101	272.9	144	384.2
Hockley	91	400.4	89	394.7	107	478.7	74	332.5	113	506.0	104	437.4	128	536.6	140	585.4
Hood	52	112.9	47	98.9	35	71.3	55	109.5	82	161.8	85	159.8	103	188.5	116	206.6
Hopkins	59	177.7	56	168.2	57	168.1	64	188.0	60	175.9	70	203.8	81	234.1	104	298.5
Houston	46	196.4	57	244.3	68	287.8	43	182.4	56	236.6	54	221.8	67	273.6	55	223.2
Howard	74	222.9	101	305.3	87	264.3	113	345.7	155	470.4	182	541.8	152	453.2	199	594.3
Hudspeth	6	167.3	7	196.3	4	114.8	4	115.6	8	235.2	3	79.5	12	314.8	16	415.2
Hunt	103	126.4	212	257.3	185	222.8	237	283.1	254	302.7	268	302.3	317	352.3	331	362.7
Hutchinson	38	168.0	60	267.9	39	171.5	33	145.3	58	256.0	59	250.1	71	301.5	59	251.3
Irion	3	167.9	3	169.7	3	171.6	4	232.2	2	116.3	7	382.5	7	383.8	4	219.2
Jack	7	79.5	9	103.0	6	67.8	8	90.5	17	192.7	19	209.9	12	132.2	10	109.8
Jackson	42	290.6	30	207.2	35	240.4	49	332.6	39	262.8	49	320.7	48	312.5	37	239.5
Jasper	92	257.0	94	264.9	102	292.6	113	320.8	123	348.0	96	267.4	150	418.1	127	354.4
Jeff Davis	1	41.9	1	40.0	1	40.2	0	0.0	1	37.9	6	216.1	0	0.0	0	0.0
Jefferson	691	276.0	478	193.3	470	191.1	894	363.3	1,126	457.5	1,142	469.0	1,225	504.5	1,389	573.1
Jim Hogg	21	399.8	12	236.5	14	275.0	11	216.5	13	254.8	21	382.2	25	454.1	22	399.3
Jim Wells	158	391.6	157	387.0	146	355.2	179	433.9	153	370.5	210	497.4	243	572.4	229	535.8
Johnson	204	142.1	285	194.8	276	182.8	293	189.8	265	170.7	318	193.5	355	209.6	435	249.2
Jones	44	213.6	47	227.6	48	235.7	39	191.9	49	241.9	36	173.2	45	216.5	36	173.4
Karnes	48	311.5	35	228.4	39	253.1	36	233.1	33	215.0	45	269.4	18	106.9	33	194.5

* Rates represent cases per 100,000 population.

Chlamydia Cases and Rates by County of Residence, 2004-2011

County	2004		2005		2006		2007		2008		2009		2010		2011	
	Cases	Rate*	Cases	Rate*	Cases	Rate*	Cases	Rate*	Cases	Rate*	Cases	Rate*	Cases	Rate*	Cases	Rate*
Kaufman	189	221.9	277	309.9	202	215.3	238	246.6	271	270.3	297	287.3	318	295.5	321	286.7
Kendall	36	129.1	47	162.2	30	98.2	28	88.0	51	155.3	80	235.2	75	212.2	80	217.9
Kenedy	2	540.5	2	524.9	1	255.1	0	0.0	1	266.0	0	0.0	0	0.0	0	0.0
Kent	0	0.0	0	0.0	0	0.0	1	122.7	0	0.0	0	0.0	0	0.0	1	116.7
Kerr	102	221.7	77	164.4	77	163.0	72	151.6	81	168.7	94	202.2	106	226.4	113	239.6
Kimble	5	110.8	4	87.2	14	303.6	5	107.6	5	108.5	3	63.1	2	41.8	5	103.9
King	0	0.0	0	0.0	0	0.0	0	0.0	0	0.0	0	0.0	0	0.0	0	0.0
Kinney	6	179.9	8	239.8	4	120.2	3	91.0	2	61.1	5	145.1	6	174.0	2	58.0
Kleberg	181	569.9	194	631.3	186	611.5	180	592.7	185	604.5	216	672.8	222	694.0	202	634.2
Knox	6	150.2	9	225.8	6	151.1	8	207.6	17	444.6	10	236.0	7	165.1	10	235.2
Lamar	187	374.6	202	405.8	165	331.4	241	483.6	216	433.2	240	478.0	276	548.3	246	487.5
Lamb	59	400.2	73	493.3	62	423.5	50	347.6	56	389.5	55	354.5	58	372.1	58	370.2
Lampasas	35	172.8	44	221.9	27	132.0	40	191.8	35	166.3	29	131.3	69	305.2	81	350.3
La Salle	15	252.2	35	585.9	26	439.6	14	236.6	24	402.5	13	215.6	14	232.2	12	199.6
Lavaca	31	159.5	46	237.3	28	144.6	24	123.3	25	128.6	29	148.6	23	117.6	28	142.7
Lee	21	126.0	21	126.6	24	142.9	24	139.6	30	174.2	41	229.4	37	204.2	38	206.9
Leon	22	135.4	15	92.3	26	160.3	21	130.5	24	144.8	21	125.0	32	188.6	42	245.5
Liberty	134	176.1	99	129.0	85	110.1	157	203.0	248	320.0	195	241.6	223	272.3	226	272.1
Limestone	82	364.9	75	331.4	75	335.2	84	378.6	76	340.2	108	464.4	107	457.7	123	523.2
Lipscomb	4	131.4	0	0.0	5	158.9	4	125.9	4	125.9	2	63.3	4	126.3	4	126.0
Live Oak	17	138.9	6	49.0	11	91.2	16	132.3	18	149.0	26	209.3	25	201.5	26	209.8
Llano	22	119.6	36	193.9	28	147.8	21	109.8	13	67.6	23	120.4	33	170.6	44	224.7
Loving	0	0.0	0	0.0	0	0.0	0	0.0	0	0.0	0	0.0	0	0.0	1	1,538.5
Lubbock	1,315	527.5	1,279	511.0	1,434	565.5	1,106	425.0	1,411	534.9	1,687	634.3	1,834	684.6	1,940	719.5
Lynn	16	253.8	20	320.5	5	80.2	8	132.5	8	133.9	14	233.6	12	202.3	17	289.2
McCulloch	17	209.4	23	282.6	19	234.2	10	122.6	19	234.2	26	301.4	23	265.3	21	240.7
McLennan	1,137	517.4	903	406.2	1,234	550.5	1,179	522.2	1,304	570.7	1,314	568.8	1,519	650.4	1,540	652.0
McMullen	2	230.7	2	231.2	2	231.7	1	116.3	5	582.1	0	0.0	2	227.8	1	113.4
Madison	22	164.8	19	141.2	28	206.9	15	109.2	31	225.3	36	251.2	37	255.3	42	286.5
Marion	21	191.2	25	229.2	27	248.2	33	308.2	26	243.7	20	181.2	23	208.5	34	308.6
Martin	7	151.2	16	342.2	7	145.2	6	123.5	17	343.4	16	304.7	12	226.1	14	260.8
Mason	3	76.9	5	128.8	12	322.7	3	81.3	6	159.5	0	0.0	3	78.2	6	156.0
Matagorda	106	280.7	66	176.8	104	280.6	65	176.0	125	334.4	95	245.1	102	262.7	102	262.3
Maverick	108	213.3	100	195.0	115	220.5	97	184.7	109	206.6	158	290.1	160	289.7	212	378.8
Medina	101	238.9	87	203.3	97	223.1	70	159.5	78	175.7	116	257.7	124	271.6	134	289.7
Menard	5	211.7	1	42.9	6	261.2	2	85.8	3	128.4	7	287.4	7	286.4	6	245.6
Midland	454	379.4	449	375.3	511	410.8	476	378.7	710	551.6	727	567.5	823	634.5	812	618.2
Milam	75	295.7	90	352.3	102	398.2	114	446.8	98	383.0	115	438.1	133	502.6	122	457.3
Mills	4	78.7	4	75.6	2	38.2	2	38.3	0	0.0	15	275.1	3	54.3	10	179.1
Mitchell	12	124.8	24	250.6	12	125.1	21	220.6	33	346.2	22	224.7	14	142.8	18	183.6
Montague	14	71.6	24	122.0	18	91.0	16	80.8	21	105.2	20	99.4	28	138.4	33	162.2
Montgomery	390	108.5	252	67.1	486	121.5	666	159.7	656	153.3	828	181.9	931	195.4	865	173.5
Moore	77	381.4	67	334.8	55	275.8	69	347.7	59	292.3	69	328.2	77	365.0	102	481.7
Morris	44	337.9	49	378.0	59	448.5	62	471.0	50	383.1	37	274.1	43	317.7	28	206.5
Motley	1	74.5	3	225.4	1	72.4	0	0.0	1	72.3	1	70.3	7	492.3	0	0.0
Nacogdoches	223	361.8	228	370.2	244	388.1	255	406.5	331	527.8	331	519.9	356	553.7	451	695.8
Navarro	185	389.4	165	343.0	167	342.8	209	426.2	262	531.9	264	518.7	279	540.5	304	580.4
Newton	27	182.8	32	219.5	44	306.9	52	366.0	46	321.1	36	241.3	34	228.4	39	263.0
Nolan	91	597.4	65	428.6	68	452.2	72	490.9	65	433.6	61	419.4	76	527.4	65	455.3
Nueces	1,426	451.2	1,385	436.7	1,428	448.1	1,585	495.5	1,971	613.4	2,084	645.5	2,391	738.2	2,520	775.6
Ochiltree	24	261.3	28	305.5	25	268.8	12	128.8	18	188.1	21	212.6	14	140.2	22	218.1
Oldham	2	90.7	3	136.1	1	45.5	1	45.7	0	0.0	1	43.1	1	42.7	2	85.5
Orange	120	141.5	53	62.9	58	69.0	200	237.6	218	259.5	190	223.5	288	339.2	265	312.6
Palo Pinto	30	109.5	22	79.3	15	53.5	18	64.3	29	104.1	54	183.7	74	249.6	62	207.3
Panola	56	246.3	90	390.5	72	310.0	75	321.6	62	266.5	54	224.9	76	315.1	76	313.8
Parker	100	98.5	118	114.0	118	110.5	150	137.6	163	146.0	192	166.7	207	174.8	287	235.7
Parmer	14	142.1	19	192.8	14	143.0	19	196.0	26	269.7	26	254.6	15	146.7	24	234.3
Pecos	52	320.2	38	234.0	39	237.5	44	267.2	54	322.2	77	434.0	68	381.6	58	323.9
Polk	78	173.2	58	126.5	68	146.7	90	194.4	65	140.6	78	159.2	112	224.3	96	188.6
Potter	780	660.0	805	674.3	883	727.5	876	720.2	1,103	904.9	1,043	834.3	1,105	874.5	966	756.4
Presidio	14	177.8	20	251.4	17	209.7	8	98.8	15	185.3	22	257.6	12	138.5	21	238.9
Rains	5	48.4	5	47.2	8	75.2	11	102.9	12	109.0	12	111.3	20	182.4	7	62.8
Randall	155	141.1	185	168.1	246	220.8	219	189.4	265	227.3	379	318.8	346	287.6	314	257.9
Reagan	2	64.0	7	225.6	8	263.1	3	91.6	4	122.6	11	350.1	13	416.5	10	322.5

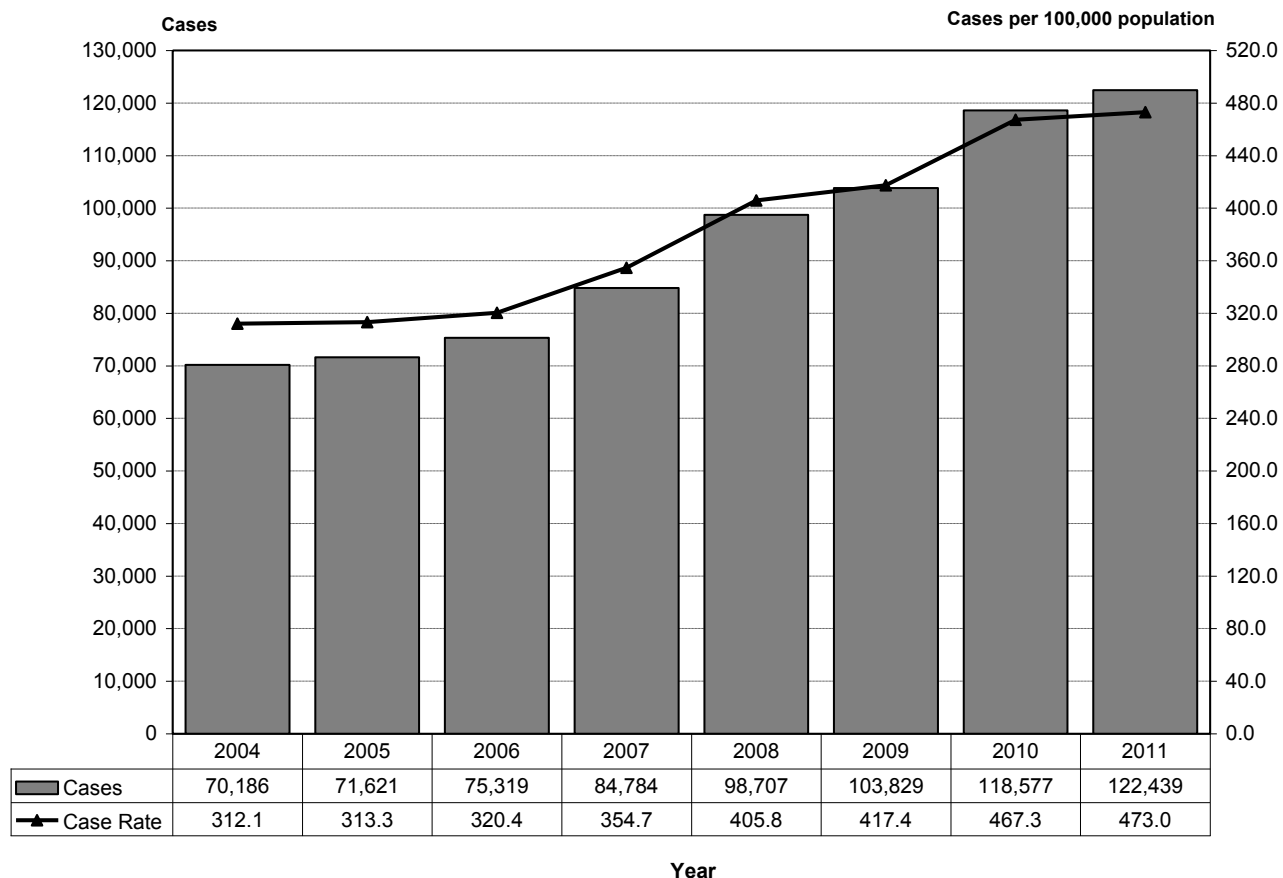
* Rates represent cases per 100,000 population.

Chlamydia Cases and Rates by County of Residence, 2004-2011

County	2004		2005		2006		2007		2008		2009		2010		2011	
	Cases	Rate*	Cases	Rate*	Cases	Rate*	Cases	Rate*	Cases	Rate*	Cases	Rate*	Cases	Rate*	Cases	Rate*
Real	4	126.3	4	122.9	3	91.0	9	273.2	10	303.8	15	452.2	5	149.2	14	413.8
Red River	28	198.2	37	264.2	34	243.3	48	348.5	50	367.7	47	326.7	37	257.1	16	111.1
Reeves	31	261.4	42	361.3	26	224.0	17	147.9	38	333.9	29	257.2	26	234.9	32	294.6
Refugio	26	339.5	12	159.6	14	186.7	7	94.3	15	203.6	22	306.1	34	477.2	21	298.1
Roberts	0	0.0	0	0.0	0	0.0	1	117.9	0	0.0	0	0.0	1	105.5	2	209.6
Robertson	46	286.2	46	283.1	75	463.8	57	355.1	57	357.6	76	452.3	67	396.6	97	571.2
Rockwall	50	86.7	52	84.2	72	103.4	53	73.2	85	111.7	91	114.1	128	150.1	129	141.7
Runnels	17	153.2	25	222.4	36	326.7	20	184.5	14	129.5	28	238.7	25	212.4	31	262.9
Rusk	110	227.3	104	218.2	115	239.1	112	232.0	109	225.5	120	241.1	131	261.9	139	276.4
Sabine	22	208.1	13	124.9	13	124.4	20	192.3	16	153.8	27	249.3	23	212.0	28	257.6
San Augustine	14	155.0	9	99.3	16	173.6	20	218.0	18	199.4	18	188.7	27	281.8	38	394.4
San Jacinto	31	132.4	16	65.1	34	137.4	31	121.4	19	74.3	28	101.6	61	216.8	34	118.4
San Patricio	177	255.5	139	200.6	122	175.6	165	238.2	220	317.9	257	363.7	289	407.6	291	409.3
San Saba	7	113.6	13	210.4	17	278.6	10	164.6	10	165.8	11	173.3	17	266.1	18	280.5
Schleicher	7	237.8	5	174.9	4	137.4	3	101.9	2	68.3	4	126.3	10	313.2	6	186.2
Scurry	47	292.2	34	213.4	47	295.7	49	302.4	47	289.7	57	332.8	59	343.0	67	388.1
Shackelford	7	213.5	1	30.7	4	122.8	4	119.2	4	119.9	6	174.1	6	173.2	7	201.1
Shelby	52	202.7	43	168.9	66	256.9	59	229.5	64	244.2	71	268.2	85	319.4	78	291.7
Sherman	1	31.6	6	178.9	4	128.7	4	128.7	7	223.9	5	149.4	7	208.3	2	59.2
Smith	810	433.9	757	398.4	807	414.3	966	489.3	1,024	510.8	937	461.9	1,038	502.0	1,021	484.0
Somervell	3	39.5	7	90.3	5	62.7	7	86.6	16	196.9	18	214.3	15	174.5	12	136.3
Starr	122	204.0	125	204.3	126	201.8	117	186.9	174	277.7	226	342.7	200	296.8	209	304.0
Stephens	11	114.8	11	114.6	16	168.5	16	165.5	14	144.9	7	68.7	12	117.0	13	126.1
Sterling	2	152.6	2	149.8	1	81.8	2	166.4	2	162.2	3	204.9	3	203.7	5	338.5
Stonewall	3	194.3	1	67.6	1	67.1	1	68.0	2	130.7	0	0.0	2	121.8	2	122.5
Sutton	10	240.8	7	168.2	11	261.6	6	141.0	6	139.3	10	218.2	9	194.4	7	149.6
Swisher	30	377.7	29	358.8	47	580.5	33	410.7	34	424.5	30	364.8	29	353.3	40	488.5
Tarrant	4,695	295.2	5,234	322.9	5,485	329.0	5,702	335.4	7,529	432.5	7,830	439.7	7,879	431.6	7,904	422.2
Taylor	710	554.8	631	493.7	522	407.4	577	449.7	594	464.3	595	454.8	673	512.6	653	496.0
Terrell	1	97.0	1	96.8	1	99.4	2	199.0	3	294.1	0	0.0	1	90.3	4	361.0
Terry	50	402.9	52	416.8	65	525.8	70	573.3	71	583.0	62	533.0	45	390.6	55	482.5
Throckmorton	2	119.5	0	0.0	0	0.0	0	0.0	0	0.0	0	0.0	0	0.0	3	159.0
Titus	110	370.0	74	249.2	105	347.8	112	368.2	136	448.0	121	383.1	123	384.4	120	370.0
Tom Green	442	426.2	493	479.8	458	444.1	420	407.1	569	543.3	560	539.1	614	591.8	687	662.9
Travis	3,422	391.3	3,679	410.3	5,420	584.0	4,785	505.2	5,748	581.6	5,829	598.2	5,902	594.5	6,223	615.5
Trinity	16	111.8	13	90.6	18	126.3	13	90.9	15	105.1	20	132.8	34	224.0	25	163.4
Tyler	26	121.9	22	103.8	34	161.6	35	165.7	44	207.8	28	127.2	29	131.1	41	184.5
Upshur	60	164.1	53	143.6	74	198.0	91	243.4	104	275.7	101	265.8	112	292.5	89	230.8
Upton	6	187.9	13	421.1	8	252.4	7	220.3	10	309.7	15	472.7	10	317.7	8	255.5
Uvalde	138	519.1	118	442.5	75	291.6	119	462.0	80	310.5	109	393.6	148	531.3	187	666.7
Val Verde	149	315.1	150	317.3	161	339.9	158	331.3	157	328.1	192	387.0	141	281.6	164	324.8
Van Zandt	41	80.2	71	140.1	104	200.7	92	176.2	88	168.0	95	178.8	78	145.4	101	186.4
Victoria	358	419.2	347	406.1	278	322.0	333	384.5	348	400.9	353	398.0	374	419.5	480	535.8
Walker	130	205.5	63	99.1	153	239.0	204	317.7	223	345.4	195	298.8	318	487.5	299	459.2
Waller	131	359.7	133	363.9	118	306.7	168	433.5	150	387.1	154	372.4	199	470.3	151	349.2
Ward	19	181.1	20	191.4	18	173.6	29	284.9	39	370.9	37	369.3	25	252.2	43	438.6
Washington	87	275.8	83	261.0	87	270.3	70	214.9	99	303.7	103	310.8	182	543.6	144	426.0
Webb	578	260.7	509	222.9	552	235.4	740	310.8	907	380.7	873	347.7	1,039	403.4	994	376.5
Wharton	96	226.9	82	194.1	99	234.3	76	179.9	137	322.0	99	227.3	96	219.2	123	279.5
Wheeler	2	41.2	1	19.8	8	157.8	1	19.9	7	136.5	8	155.6	16	311.4	11	214.4
Wichita	432	337.9	495	384.6	446	341.7	555	427.0	725	556.9	661	515.9	710	556.0	648	509.2
Wilbarger	24	168.9	16	114.9	24	170.0	36	249.9	46	320.4	26	170.6	47	307.5	44	287.0
Willacy	65	313.2	69	333.9	62	296.9	72	343.1	92	438.6	92	420.8	105	476.5	70	315.4
Williamson	431	139.7	530	160.2	783	223.7	787	212.3	1,103	281.3	1,044	252.6	1,283	294.7	1,254	273.6
Wilson	69	183.2	54	141.7	76	194.2	50	123.2	69	168.4	63	142.9	70	153.8	105	223.5
Winkler	16	234.6	12	180.2	26	382.1	27	395.1	23	330.9	14	211.0	27	410.8	16	245.9
Wise	56	103.2	53	96.0	48	85.0	86	149.2	84	143.5	77	127.9	100	162.4	125	198.5
Wood	50	126.7	36	90.4	39	93.6	55	131.1	45	106.0	50	113.5	50	111.4	52	113.8
Yoakum	14	194.1	23	318.5	19	261.6	11	150.5	19	253.1	21	256.8	15	181.6	28	334.8
Young	18	100.8	18	101.7	21	116.2	27	148.0	26	142.6	35	188.4	37	198.5	37	197.6
Zapata	29	207.9	41	296.7	18	127.4	23	162.3	16	111.8	37	247.6	48	314.4	39	249.9
Zavala	40	341.9	38	325.8	24	205.2	68	572.7	57	481.3	63	494.7	71	552.8	54	416.7
Total	70,186	312.1	71,621	313.3	75,319	320.4	84,784	354.7	98,707	405.8	103,829	417.4	118,577	467.3	122,439	473.0

* Rates represent cases per 100,000 population.

Texas Chlamydia Cases and Case Rates by Year of Report, 2004-2011



Chlamydia Cases and Rates by Sex, Race/Ethnicity and Age Group, 2004-2011

	2004		2005		2006		2007		2008		2009		2010		2011	
	Cases	Rate*	Cases	Rate*	Cases	Rate*	Cases	Rate*	Cases	Rate*	Cases	Rate*	Cases	Rate*	Cases	Rate*
Sex																
Male	12,598	112.3	13,098	114.7	15,125	128.7	17,441	145.8	21,412	175.7	22,953	183.9	26,630	209.0	28,992	222.8
Female	57,444	509.8	58,488	511.2	60,135	511.6	67,198	562.8	77,274	636.7	80,832	652.2	91,884	727.5	93,423	725.9
Unknown	144		35		59		145		21		44		63		24	
Race																
White	12,915	115.1	13,497	120.2	14,204	125.4	16,196	142.9	20,405	179.9	20,674	181.1	24,347	212.8	26,492	231.0
Black	19,535	760.8	20,604	793.2	21,527	783.0	25,023	899.2	30,256	1,071.6	31,663	1,102.1	34,856	1,191.4	35,418	1,189.0
Hispanic	28,883	368.0	29,498	362.3	30,349	357.6	32,955	374.8	39,871	437.3	43,363	457.2	48,228	489.7	50,114	490.4
Other	1,238	145.5	1,784	199.8	2,202	233.2	2,528	254.9	2,871	275.0	2,558	232.0	2,779	239.8	2,070	170.0
Unknown	7,615		6,238		7,037		8,082		5,304		5,571		8,367		8,345	
Age Group																
0 - 9	163	4.8	140	4.0	132	3.7	132	3.7	87	2.4	86	2.3	117	3.0	111	2.8
10 - 14	1,105	63.9	961	55.7	919	52.9	1,100	63.9	1,174	68.7	1,176	70.6	1,257	75.1	1,340	78.6
15 - 19	25,137	1,456.3	25,239	1,436.9	26,245	1,449.8	29,256	1,589.2	34,278	1,836.9	35,960	1,980.9	39,558	2,184.4	39,717	2,200.7
20 - 24	26,341	1,515.6	27,123	1,539.9	28,272	1,570.3	31,600	1,738.5	35,781	1,947.0	38,089	2,045.6	44,519	2,351.0	46,387	2,410.4
25 - 29	10,222	619.3	10,565	624.1	11,496	651.8	13,272	729.4	15,767	838.0	16,270	834.9	18,501	931.9	19,427	966.1
30 - 34	3,880	226.2	4,192	243.8	4,458	256.0	5,105	290.8	6,361	357.0	6,534	351.8	8,019	419.7	8,272	418.3
35 - 39	1,664	101.6	1,822	109.5	2,039	117.8	2,244	126.3	2,768	152.7	2,983	156.9	3,465	180.1	3,642	187.7
40 - 44	767	44.4	763	44.3	835	48.4	1,039	60.9	1,227	72.4	1,383	78.9	1,594	89.2	1,787	96.5
45+	687	9.6	681	9.3	735	9.6	878	11.2	1,111	13.8	1,258	15.2	1,417	16.6	1,673	19.1
Unknown	220		135		188		158		153		90		130		83	
Total	70,186	312.1	71,621	313.3	75,319	320.4	84,784	354.7	98,707	405.8	103,829	417.4	118,577	467.3	122,439	473.0

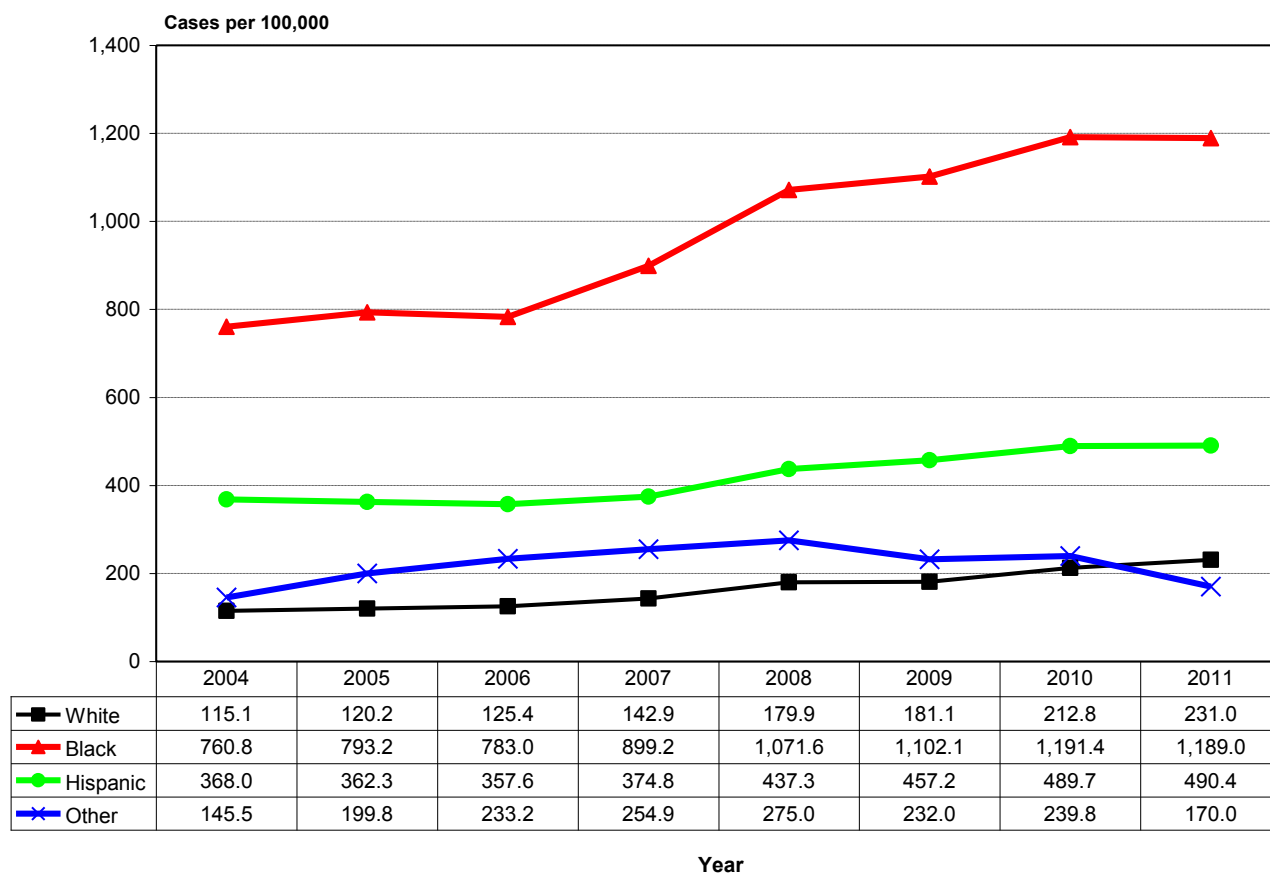
* Rates represent cases per 100,000 population.

Chlamydia Cases by Age Group, Race/Ethnicity and Sex, 2011

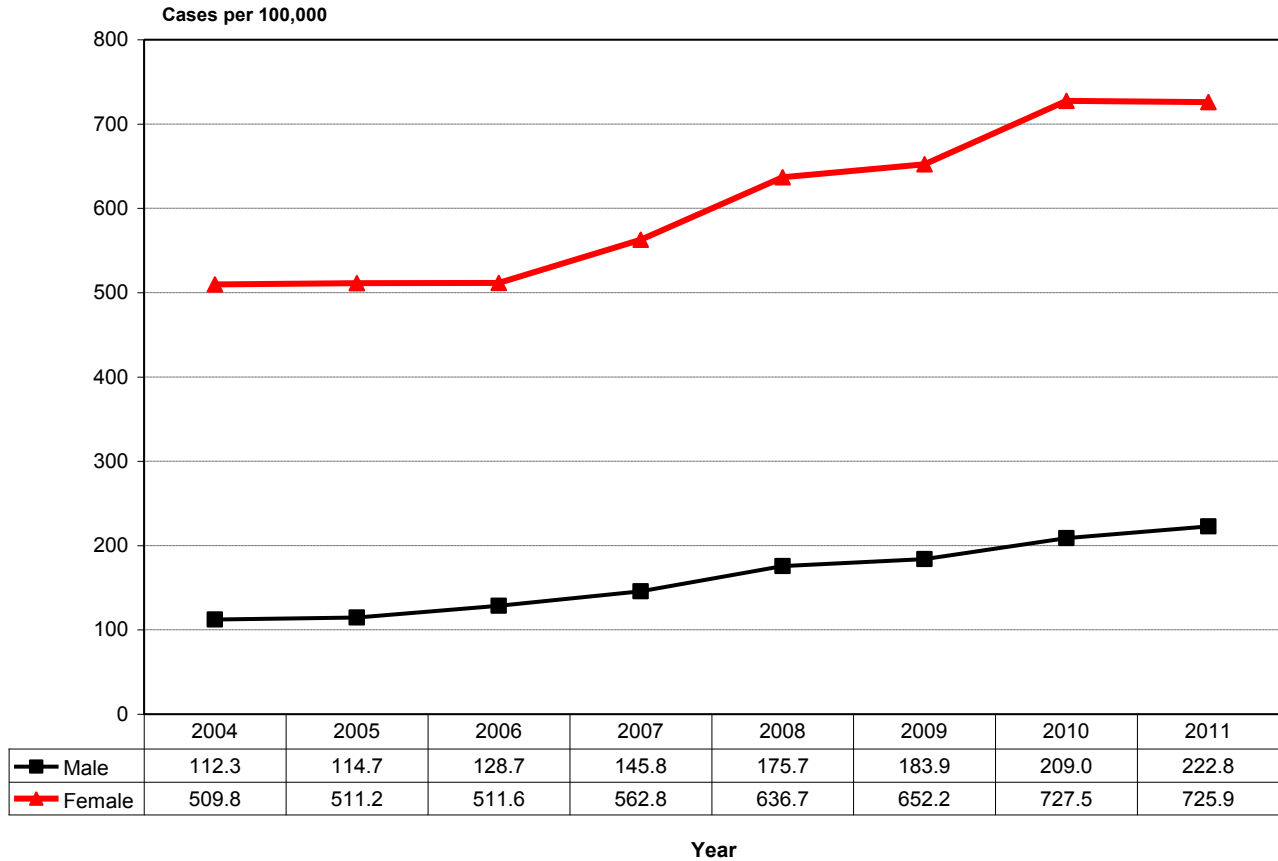
Age Group	Male						Female						Unk Sex	Total	Percent
	White	Black	Hisp.	Other	Unk	Total	White	Black	Hisp.	Other	Unk	Total			
0 - 9	6	13	10	0	2	31	9	16	48	2	5	80	0	111	0.1%
10 - 14	24	55	63	1	6	149	187	435	467	11	90	1,190	1	1,340	1.1%
15 - 19	1,173	2,535	2,468	69	508	6,753	7,119	10,163	12,905	424	2,344	32,955	9	39,717	32.4%
20 - 24	2,479	3,627	3,897	169	755	10,927	8,230	9,684	14,731	603	2,204	35,452	8	46,387	37.9%
25 - 29	1,276	1,711	2,177	135	380	5,679	2,851	3,300	6,417	263	914	13,745	3	19,427	15.9%
30 - 34	574	808	965	53	197	2,597	1,072	1,225	2,905	121	351	5,674	1	8,272	6.8%
35 - 39	279	432	459	37	85	1,292	387	447	1,283	77	156	2,350	0	3,642	3.0%
40 - 44	184	237	218	15	67	721	216	195	546	32	76	1,065	1	1,787	1.5%
45+	245	298	170	32	71	816	168	211	360	23	95	857	0	1,673	1.4%
Unk	5	9	8	2	3	27	6	15	17	1	16	55	1	83	0.1%
Total	6,245	9,725	10,435	513	2,074	28,992	20,245	25,691	39,679	1,557	6,251	93,423	24	122,439	
Percent	21.5%	33.5%	36.0%	1.8%	7.2%		21.7%	27.5%	42.5%	1.7%	6.7%				
Percent Male						23.7%	Percent Female						76.3%		

Total White	26,492	21.6%
Total Black	35,418	28.9%
Total Hispanic	50,114	40.9%
Total Other	2,070	1.7%
Total Unknown	8,345	6.8%
Total	122,439	

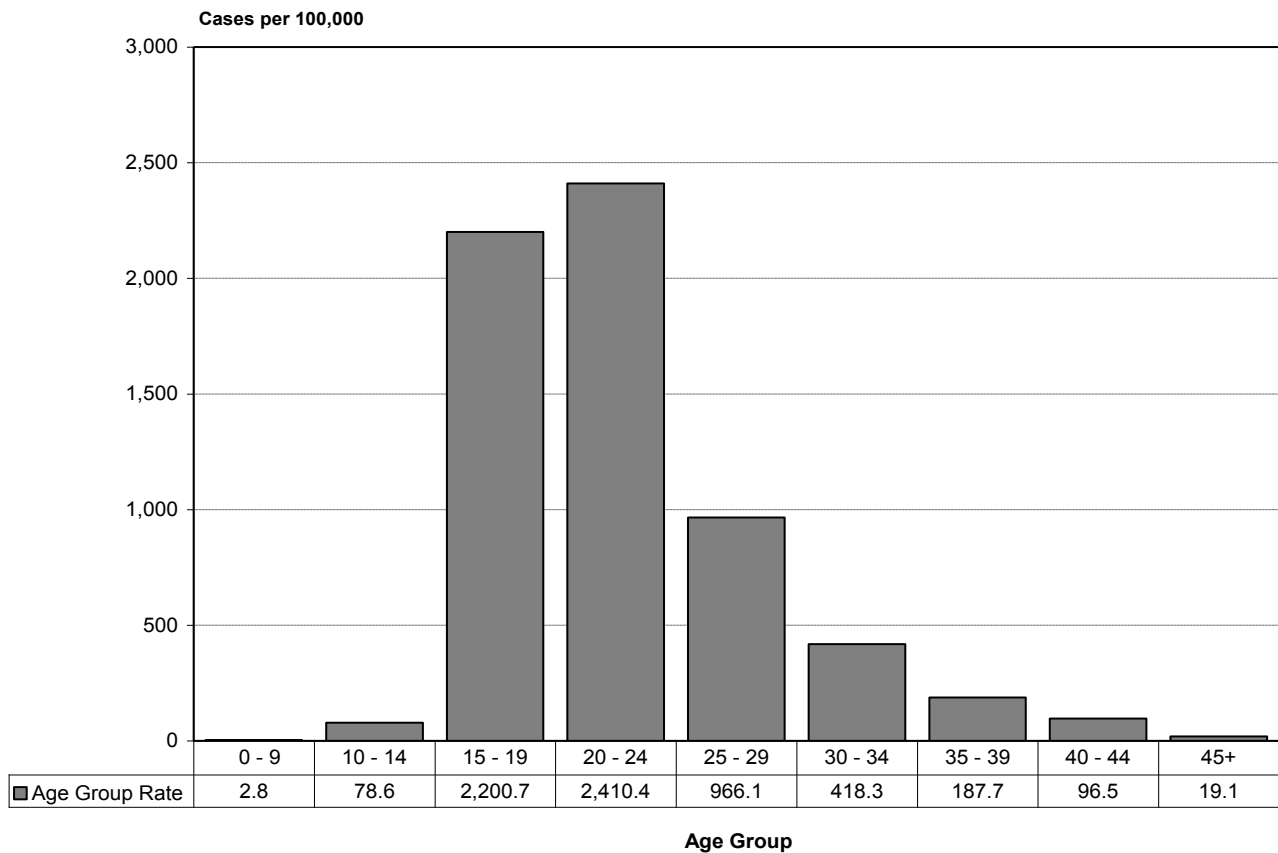
Texas Chlamydia Case Rates by Race and Year of Report, 2004-2011



Texas Chlamydia Case Rates by Sex and Year of Report, 2004-2011



Texas Chlamydia Case Rates by Age Group and Year of Report, 2011



Gonorrhea Cases and Rates by County of Residence, 2004-2011

County	2004		2005		2006		2007		2008		2009		2010		2011	
	Cases	Rate*	Cases	Rate*	Cases	Rate*	Cases	Rate*	Cases	Rate*	Cases	Rate*	Cases	Rate*	Cases	Rate*
Anderson	51	91.0	59	105.4	93	165.5	66	117.1	62	109.8	44	76.4	54	93.3	74	127.4
Andrews	6	46.5	13	101.9	3	22.8	9	67.6	2	14.4	4	28.2	9	62.9	8	55.5
Angelina	127	155.3	116	141.4	105	127.4	109	131.7	104	125.2	108	127.6	122	143.3	114	133.1
Aransas	21	87.2	12	48.9	13	52.2	16	63.4	19	75.0	20	74.0	16	58.1	8	28.5
Archer	4	43.2	1	10.9	23	253.7	5	54.7	7	75.7	1	10.6	2	21.0	0	0.0
Armstrong	0	0.0	0	0.0	1	46.1	0	0.0	1	45.6	1	44.1	0	0.0	0	0.0
Atascosa	20	46.9	14	33.4	19	44.8	16	37.1	14	31.9	19	42.0	22	47.9	36	77.2
Austin	5	19.4	2	7.6	8	29.7	12	44.3	22	80.7	16	56.7	17	59.2	8	27.3
Bailey	4	60.9	1	15.3	1	15.4	4	63.8	1	15.9	2	31.4	1	15.8	1	15.9
Bandera	5	25.6	4	20.5	1	5.1	4	19.8	5	24.6	3	14.4	3	14.1	4	18.5
Bastrop	45	65.9	47	67.6	58	80.9	51	70.5	55	75.0	44	55.7	52	63.6	34	40.3
Baylor	6	148.0	0	0.0	4	99.0	9	222.4	9	228.3	4	100.0	0	0.0	1	25.1
Bee	22	66.2	17	51.2	5	15.1	10	30.2	20	60.4	28	82.5	15	44.0	19	55.5
Bell	699	277.4	975	374.2	1,004	373.1	872	317.2	1,198	424.0	1,172	409.7	1,181	405.3	1,075	362.4
Bexar	2,056	138.3	2,194	145.2	2,572	165.9	2,473	156.6	2,908	179.7	3,401	210.9	3,520	215.1	3,470	208.9
Blanco	5	54.4	1	10.7	0	0.0	1	10.6	0	0.0	1	9.9	2	19.3	0	0.0
Borden	0	0.0	0	0.0	0	0.0	0	0.0	0	0.0	0	0.0	0	0.0	0	0.0
Bosque	5	27.9	25	137.7	3	16.4	10	54.5	15	82.0	5	28.3	2	11.3	7	39.2
Bowie	175	191.4	197	213.5	230	246.6	274	293.7	199	213.2	188	202.9	186	200.1	149	159.8
Brazoria	139	51.3	127	45.9	150	52.3	180	61.4	121	40.2	138	44.4	180	56.4	180	54.9
Brazos	143	88.7	271	168.5	311	186.0	291	171.9	353	202.5	341	196.8	329	187.5	240	134.9
Brewster	1	10.8	0	0.0	4	43.3	4	43.2	8	86.2	1	10.6	4	42.2	10	105.0
Briscoe	1	60.4	0	0.0	0	0.0	0	0.0	0	0.0	0	0.0	0	0.0	1	53.6
Brooks	1	12.7	0	0.0	7	90.6	8	103.8	5	64.7	6	76.1	24	305.1	4	51.0
Brown	32	83.6	44	115.2	42	108.8	20	51.7	22	56.8	44	110.7	17	42.6	16	39.9
Burleson	15	85.7	16	89.7	26	143.6	26	143.3	16	88.1	26	140.8	16	85.6	15	79.3
Burnet	9	23.5	5	12.7	19	46.7	9	21.2	28	64.9	17	36.9	11	23.1	12	24.4
Caldwell	18	50.7	30	84.7	16	45.0	47	131.4	54	147.4	38	99.9	40	103.3	59	149.7
Calhoun	24	116.2	14	68.0	13	62.4	10	47.8	6	28.8	5	21.7	12	51.6	9	38.3
Callahan	1	7.5	4	29.6	4	29.6	2	14.5	5	36.3	4	27.8	4	27.5	3	20.4
Cameron	101	27.1	96	25.4	97	24.9	95	24.3	215	54.7	149	36.4	176	42.2	213	50.1
Camp	11	88.1	18	142.5	19	149.5	13	101.6	20	155.5	18	136.2	10	74.6	11	80.8
Carson	2	31.2	1	15.4	3	46.2	1	15.5	0	0.0	1	14.8	0	0.0	0	0.0
Cass	44	144.9	31	102.2	63	206.1	66	216.2	63	207.6	37	120.8	43	140.4	17	55.5
Castro	2	26.0	3	39.1	9	119.1	13	172.3	3	39.6	0	0.0	1	13.5	0	0.0
Chambers	15	50.8	5	15.7	7	21.6	15	45.5	6	18.2	9	25.9	11	30.7	3	8.1
Cherokee	93	193.3	72	148.5	59	122.1	63	129.0	71	143.7	47	94.6	74	148.0	49	97.3
Childress	3	39.3	8	104.0	4	51.8	5	64.9	2	26.0	3	38.0	3	37.8	3	37.7
Clay	1	8.8	6	53.2	2	17.9	2	18.0	2	18.1	0	0.0	3	26.7	2	17.8
Cochran	2	56.8	4	111.8	1	27.9	1	28.6	2	57.1	0	0.0	0	0.0	1	29.0
Coke	11	282.3	8	201.6	10	256.6	2	52.4	1	26.0	2	51.2	1	25.5	1	25.5
Coleman	7	76.9	2	22.6	4	45.1	4	46.1	5	57.7	4	44.6	2	22.4	1	11.2
Collin	231	37.0	244	37.2	290	41.6	379	51.8	364	47.9	319	39.8	411	48.8	447	50.5
Collingsworth	4	132.0	2	65.8	3	102.3	0	0.0	1	33.1	1	31.6	2	63.4	0	0.0
Colorado	16	75.1	10	47.5	22	101.7	23	106.0	16	73.5	17	77.0	10	44.9	15	66.8
Comal	14	15.4	19	19.9	26	25.5	33	31.1	35	31.8	41	35.3	48	39.7	45	35.7
Comanche	0	0.0	3	21.5	3	21.3	2	14.1	2	14.1	2	14.1	1	7.0	1	7.0
Concho	0	0.0	0	0.0	1	26.3	0	0.0	0	0.0	0	0.0	2	51.9	1	26.2
Cooke	19	49.2	35	90.1	27	67.8	30	74.9	27	67.5	22	54.4	22	53.9	28	67.8
Coryell	43	57.8	55	72.9	82	107.9	42	54.9	66	86.6	69	85.5	99	121.9	58	71.0
Cottle	3	181.6	9	544.1	2	122.9	1	61.0	0	0.0	1	53.4	2	106.8	0	0.0
Crane	0	0.0	0	0.0	0	0.0	0	0.0	1	24.8	1	23.4	1	23.3	2	46.2
Crockett	3	73.5	1	24.8	1	25.1	0	0.0	1	23.7	0	0.0	0	0.0	0	0.0
Crosby	9	137.2	14	211.7	11	166.4	10	154.8	6	95.2	6	90.9	5	76.5	8	123.6
Culberson	0	0.0	0	0.0	0	0.0	0	0.0	1	39.8	2	73.2	2	73.9	0	0.0
Dallam	1	15.9	1	16.0	3	48.0	4	64.0	2	31.7	0	0.0	0	0.0	3	44.1
Dallas	4,157	181.5	5,037	219.0	4,650	198.7	6,158	260.4	5,070	212.3	4,420	183.2	5,013	205.8	5,143	209.0
Dawson	9	63.4	10	69.9	19	133.9	14	99.9	16	114.9	11	74.2	34	229.9	32	216.9
Deaf Smith	10	53.8	20	107.5	17	91.2	21	112.4	7	37.3	10	49.1	5	24.3	7	33.8
Delta	4	74.7	6	113.8	6	113.9	3	56.1	5	91.2	3	56.2	1	18.8	0	0.0
Denton	207	38.8	237	42.4	294	49.8	336	54.6	328	51.5	277	41.0	384	54.4	349	47.3
DeWitt	20	98.2	12	58.3	17	83.2	10	49.2	18	89.3	12	58.5	16	77.8	10	48.5
Dickens	2	70.3	2	70.2	1	37.1	0	0.0	0	0.0	0	0.0	0	0.0	1	35.9
Dimmit	3	29.5	13	129.0	15	149.5	7	70.6	6	60.2	4	40.7	1	10.2	5	51.6

* Rates represent cases per 100,000 population.

Gonorrhea Cases and Rates by County of Residence, 2004-2011

County	2004		2005		2006		2007		2008		2009		2010		2011	
	Cases	Rate*	Cases	Rate*	Cases	Rate*	Cases	Rate*	Cases	Rate*	Cases	Rate*	Cases	Rate*	Cases	Rate*
Donley	6	150.2	10	256.3	6	153.6	2	50.3	2	50.7	3	77.5	6	155.0	2	51.6
Duval	4	30.7	1	7.8	9	71.4	3	24.2	2	16.3	6	49.4	5	41.5	13	109.0
Eastland	4	21.6	6	32.5	4	21.8	4	21.9	1	5.5	3	16.0	6	31.9	4	21.2
Ector	116	93.0	151	121.2	153	120.3	164	127.9	220	168.1	201	152.8	214	161.1	188	140.2
Edwards	1	48.6	0	0.0	0	0.0	0	0.0	0	0.0	1	45.2	1	45.2	0	0.0
Ellis	63	48.7	101	75.9	101	72.6	108	75.7	122	82.7	102	66.4	91	57.1	118	71.5
El Paso	270	37.8	342	47.1	343	46.1	395	52.8	539	72.0	503	65.9	803	103.9	747	95.5
Erath	14	41.4	15	44.1	22	64.1	11	31.3	8	22.7	5	12.8	5	12.6	27	67.2
Falls	60	327.7	62	342.4	97	537.8	58	324.4	39	220.9	43	229.5	43	229.4	30	159.9
Fannin	17	50.9	45	133.0	39	114.6	21	61.1	27	78.6	16	46.5	11	31.6	8	22.8
Fayette	11	47.7	8	34.8	14	58.9	20	83.5	17	70.5	11	44.3	18	71.3	10	39.0
Fisher	3	71.9	0	0.0	2	47.5	3	71.9	3	72.3	3	71.5	0	0.0	4	96.5
Floyd	2	27.6	0	0.0	6	82.6	2	27.6	6	84.0	5	71.6	7	101.3	3	43.9
Foard	1	65.9	1	67.6	1	67.0	0	0.0	0	0.0	0	0.0	0	0.0	0	0.0
Fort Bend	131	30.2	111	24.3	264	54.2	334	65.4	303	56.8	293	53.1	363	62.9	267	44.2
Franklin	4	40.9	0	0.0	3	29.2	4	37.8	9	85.3	9	83.3	7	63.9	6	54.0
Freestone	10	53.1	8	42.0	22	113.5	36	183.9	28	141.7	15	74.4	15	73.4	13	62.8
Frio	9	55.7	9	55.0	15	91.9	4	24.4	4	24.5	5	28.1	16	89.1	7	38.7
Gaines	2	13.7	9	60.4	7	46.3	2	13.2	3	19.5	5	30.7	8	48.6	3	18.0
Galveston	365	134.7	443	160.9	497	176.2	575	201.5	416	144.4	291	100.6	274	93.2	391	130.9
Garza	1	19.9	6	121.3	7	137.9	5	98.8	4	78.9	2	38.4	3	57.3	2	37.9
Gillespie	3	13.2	5	21.2	3	12.5	4	16.5	0	0.0	0	0.0	4	15.5	3	11.3
Glasscock	0	0.0	0	0.0	0	0.0	1	82.0	0	0.0	0	0.0	0	0.0	0	0.0
Goliad	3	42.2	4	56.3	2	27.8	4	55.1	1	13.8	4	52.4	2	25.9	5	64.3
Gonzales	12	61.4	10	51.3	14	72.7	18	93.8	18	93.6	33	163.4	28	137.5	26	126.6
Gray	22	99.3	20	90.3	19	84.7	16	71.0	2	8.8	7	30.6	2	8.7	4	17.5
Grayson	80	68.8	105	89.5	110	92.9	81	68.3	109	91.8	69	57.7	83	68.7	62	50.8
Gregg	274	239.7	314	273.3	275	233.6	265	224.3	273	231.0	380	312.5	306	248.8	309	248.2
Grimes	24	97.3	54	217.5	43	173.4	20	80.4	20	78.8	26	99.4	23	87.0	28	104.9
Guadalupe	45	43.9	37	35.5	51	45.9	49	42.1	89	75.4	117	94.1	79	61.3	82	61.3
Hale	44	121.2	30	83.1	56	155.9	41	115.4	31	87.7	23	61.9	39	105.0	38	102.3
Hall	1	26.8	3	80.4	1	27.3	4	111.7	0	0.0	4	104.3	2	52.1	1	26.0
Hamilton	0	0.0	4	48.2	1	11.8	1	11.8	0	0.0	0	0.0	0	0.0	2	22.2
Hansford	0	0.0	1	18.8	0	0.0	0	0.0	0	0.0	0	0.0	0	0.0	0	0.0
Hardeman	1	21.4	2	44.3	2	45.1	2	45.7	3	69.2	5	108.2	4	86.8	4	86.9
Hardin	26	51.8	10	19.9	5	9.9	34	66.5	22	42.6	18	34.7	7	13.4	15	28.6
Harris	4,670	128.1	4,371	118.3	6,073	158.6	6,374	163.8	6,070	153.1	5,170	128.7	6,371	155.5	5,735	137.3
Harrison	124	197.7	115	181.6	128	200.9	101	157.6	81	126.1	83	123.6	121	178.8	143	209.7
Hartley	0	0.0	2	36.8	1	18.1	0	0.0	1	17.4	0	0.0	0	0.0	0	0.0
Haskell	1	16.8	1	17.7	2	35.3	4	71.5	6	107.7	5	84.6	6	101.7	2	34.0
Hays	55	45.6	91	72.1	137	102.3	113	80.9	148	100.3	141	90.0	145	88.4	153	89.1
Hemphill	0	0.0	0	0.0	1	29.1	0	0.0	0	0.0	1	27.9	0	0.0	0	0.0
Henderson	43	55.3	46	58.5	54	68.1	57	72.0	28	35.4	49	60.9	29	35.7	33	40.1
Hidalgo	131	19.9	135	19.9	162	22.9	156	21.7	134	18.5	163	21.2	201	25.3	377	46.1
Hill	26	76.1	30	87.4	34	97.5	37	105.2	33	92.8	48	131.4	36	97.3	32	85.4
Hockley	15	66.0	18	79.8	22	98.4	20	89.9	28	125.4	20	84.1	31	130.0	34	142.2
Hood	7	15.2	8	16.8	6	12.2	3	6.0	5	9.9	9	16.9	3	5.5	9	16.0
Hopkins	17	51.2	23	69.1	25	73.7	19	55.8	29	85.0	17	49.5	20	57.8	23	66.0
Houston	23	98.2	32	137.2	26	110.0	34	144.2	23	97.2	21	86.3	13	53.1	10	40.6
Howard	19	57.2	26	78.6	76	230.9	61	186.6	64	194.2	67	199.5	47	140.1	63	188.1
Hudspeth	2	55.8	0	0.0	0	0.0	0	0.0	0	0.0	0	0.0	1	26.2	1	25.9
Hunt	50	61.3	69	83.7	53	63.8	73	87.2	48	57.2	61	68.8	62	68.9	66	72.3
Hutchinson	6	26.5	4	17.9	4	17.6	9	39.6	8	35.3	10	42.4	8	34.0	6	25.6
Irion	1	56.0	0	0.0	1	57.2	2	116.1	0	0.0	1	54.6	0	0.0	0	0.0
Jack	1	11.4	1	11.4	4	45.2	4	45.3	2	22.7	2	22.1	1	11.0	2	22.0
Jackson	19	131.5	14	96.7	16	109.9	16	108.6	5	33.7	20	130.9	12	78.1	4	25.9
Jasper	23	64.2	44	124.0	45	129.1	50	141.9	43	121.7	29	80.8	22	61.3	30	83.7
Jeff Davis	0	0.0	1	40.0	0	0.0	0	0.0	0	0.0	0	0.0	0	0.0	1	34.2
Jefferson	484	193.4	277	112.0	325	132.2	585	237.7	542	220.2	514	211.1	446	183.7	441	182.0
Jim Hogg	1	19.0	1	19.7	3	58.9	2	39.4	3	58.8	3	54.6	2	36.3	2	36.3
Jim Wells	18	44.6	15	37.0	29	70.6	30	72.7	36	87.2	29	68.7	44	103.6	39	91.2
Johnson	57	39.7	50	34.2	56	37.1	58	37.6	60	38.7	43	26.2	57	33.7	50	28.6
Jones	16	77.7	6	29.1	13	63.8	13	64.0	19	93.8	14	67.3	7	33.7	11	53.0
Karnes	4	26.0	2	13.1	4	26.0	1	6.5	4	26.1	0	0.0	4	23.8	5	29.5

* Rates represent cases per 100,000 population.

Gonorrhea Cases and Rates by County of Residence, 2004-2011

County	2004		2005		2006		2007		2008		2009		2010		2011	
	Cases	Rate*	Cases	Rate*	Cases	Rate*	Cases	Rate*	Cases	Rate*	Cases	Rate*	Cases	Rate*	Cases	Rate*
Kaufman	56	65.8	98	109.6	108	115.1	112	116.1	79	78.8	69	66.7	76	70.6	82	73.2
Kendall	2	7.2	9	31.1	3	9.8	3	9.4	7	21.3	4	11.8	6	17.0	16	43.6
Kenedy	0	0.0	0	0.0	0	0.0	0	0.0	0	0.0	0	0.0	0	0.0	0	0.0
Kent	0	0.0	0	0.0	0	0.0	0	0.0	0	0.0	0	0.0	0	0.0	0	0.0
Kerr	18	39.1	21	44.8	8	16.9	12	25.3	18	37.5	15	32.3	11	23.5	15	31.8
Kimble	0	0.0	0	0.0	0	0.0	0	0.0	0	0.0	0	0.0	1	20.9	0	0.0
King	0	0.0	0	0.0	0	0.0	0	0.0	0	0.0	0	0.0	0	0.0	0	0.0
Kinney	0	0.0	0	0.0	1	30.1	0	0.0	0	0.0	1	29.0	1	29.0	0	0.0
Kleberg	38	119.6	50	162.7	25	82.2	42	138.3	31	101.3	24	74.8	24	75.0	27	84.8
Knox	1	25.0	0	0.0	1	25.2	4	103.8	12	313.8	2	47.2	1	23.6	1	23.5
Lamar	73	146.2	104	208.9	91	182.8	129	258.9	125	250.7	76	151.4	94	186.7	90	178.4
Lamb	13	88.2	14	94.6	8	54.6	15	104.3	11	76.5	15	96.7	9	57.7	10	63.8
Lampasas	11	54.3	11	55.5	13	63.5	12	57.5	8	38.0	13	58.9	14	61.9	22	95.2
La Salle	3	50.4	3	50.2	3	50.7	2	33.8	3	50.3	3	49.8	0	0.0	1	16.6
Lavaca	13	66.9	8	41.3	9	46.5	3	15.4	12	61.7	10	51.2	5	25.6	5	25.5
Lee	14	84.0	7	42.2	17	101.2	13	75.6	5	29.0	10	55.9	4	22.1	5	27.2
Leon	11	67.7	3	18.5	11	67.8	9	55.9	7	42.2	10	59.5	10	58.9	16	93.5
Liberty	61	80.2	35	45.6	30	38.9	45	58.2	39	50.3	31	38.4	48	58.6	46	55.4
Limestone	39	173.5	38	167.9	49	219.0	74	333.5	39	174.6	30	129.0	42	179.6	43	182.9
Lipscomb	1	32.9	0	0.0	0	0.0	0	0.0	0	0.0	1	31.6	1	31.6	0	0.0
Live Oak	2	16.3	2	16.3	3	24.9	0	0.0	2	16.6	2	16.1	0	0.0	6	48.4
Llano	0	0.0	3	16.2	6	31.7	3	15.7	6	31.2	5	26.2	4	20.7	2	10.2
Loving	0	0.0	1	1,562.5	0	0.0	1	1,639.3	0	0.0	0	0.0	0	0.0	0	0.0
Lubbock	438	175.7	429	171.4	496	195.6	389	149.5	429	162.6	488	183.5	618	230.7	688	255.1
Lynn	4	63.5	4	64.1	6	96.2	4	66.2	1	16.7	2	33.4	4	67.4	4	68.1
McCulloch	0	0.0	6	73.7	1	12.3	1	12.3	1	12.3	2	23.2	0	0.0	3	34.4
McLennan	545	248.0	457	205.6	509	227.1	709	314.0	564	246.8	450	194.8	404	173.0	424	179.5
McMullen	0	0.0	0	0.0	0	0.0	0	0.0	0	0.0	0	0.0	0	0.0	0	0.0
Madison	8	59.9	5	37.2	15	110.8	7	51.0	11	79.9	11	76.8	12	82.8	19	129.6
Marion	11	100.1	8	73.3	13	119.5	15	140.1	9	84.4	9	81.5	14	126.9	8	72.6
Martin	5	108.0	6	128.3	2	41.5	3	61.7	1	20.2	4	76.2	4	75.4	2	37.3
Mason	0	0.0	1	25.8	0	0.0	1	27.1	0	0.0	0	0.0	0	0.0	0	0.0
Matagorda	16	42.4	23	61.6	61	164.6	25	67.7	30	80.3	31	80.0	25	64.4	25	64.3
Maverick	10	19.7	4	7.8	9	17.3	7	13.3	28	53.1	8	14.7	11	19.9	8	14.3
Medina	26	61.5	15	35.1	16	36.8	7	15.9	6	13.5	23	51.1	6	13.1	27	58.4
Menard	0	0.0	0	0.0	1	43.5	1	42.9	0	0.0	2	82.1	0	0.0	0	0.0
Midland	186	155.5	190	158.8	165	132.7	162	128.9	231	179.5	228	178.0	248	191.2	190	144.7
Milam	29	114.3	43	168.3	40	156.1	56	219.5	33	129.0	33	125.7	21	79.4	15	56.2
Mills	1	19.7	1	18.9	0	0.0	1	19.2	0	0.0	2	36.7	0	0.0	0	0.0
Mitchell	3	31.2	1	10.4	2	20.8	7	73.5	4	42.0	6	61.3	5	51.0	2	20.4
Montague	1	5.1	3	15.2	9	45.5	8	40.4	4	20.0	2	9.9	4	19.8	8	39.3
Montgomery	81	22.5	56	14.9	111	27.8	167	40.0	130	30.4	150	33.0	148	31.1	134	26.9
Moore	8	39.6	8	40.0	9	45.1	11	55.4	10	49.5	8	38.1	3	14.2	5	23.6
Morris	13	99.8	22	169.7	35	266.1	28	212.7	35	268.1	16	118.5	17	125.6	9	66.4
Motley	0	0.0	0	0.0	0	0.0	0	0.0	0	0.0	0	0.0	1	70.3	0	0.0
Nacogdoches	74	120.1	69	112.0	113	179.7	96	153.0	131	208.9	120	188.5	132	205.3	140	216.0
Navarro	71	149.4	89	185.0	103	211.4	70	142.7	97	196.9	71	139.5	73	141.4	96	183.3
Newton	14	94.8	19	130.3	15	104.6	16	112.6	16	111.7	10	67.0	11	73.9	7	47.2
Nolan	16	105.0	15	98.9	23	152.9	11	75.0	52	346.9	42	288.8	24	166.5	24	168.1
Nueces	475	150.3	426	134.3	436	136.8	503	157.2	582	181.1	462	143.1	485	149.7	578	177.9
Ochiltree	0	0.0	1	10.9	0	0.0	1	10.7	0	0.0	0	0.0	0	0.0	2	19.8
Oldham	0	0.0	0	0.0	0	0.0	0	0.0	0	0.0	0	0.0	0	0.0	0	0.0
Orange	33	38.9	13	15.4	31	36.9	50	59.4	48	57.1	41	48.2	80	94.2	62	73.1
Palo Pinto	12	43.8	1	3.6	14	49.9	14	50.0	9	32.3	6	20.4	5	16.9	3	10.0
Panola	21	92.4	33	143.2	26	111.9	42	180.1	18	77.4	15	62.5	17	70.5	17	70.2
Parker	26	25.6	25	24.1	20	18.7	23	21.1	36	32.3	24	20.8	10	8.4	40	32.8
Parmer	2	20.3	1	10.1	3	30.6	3	31.0	2	20.7	2	19.6	0	0.0	0	0.0
Pecos	1	6.2	1	6.2	2	12.2	3	18.2	5	29.8	8	45.1	9	50.5	3	16.8
Polk	44	97.7	24	52.4	35	75.5	31	67.0	25	54.1	26	53.1	16	32.0	25	49.1
Potter	341	288.5	411	344.3	521	429.2	465	382.3	412	338.0	383	306.4	377	298.4	274	214.5
Presidio	0	0.0	2	25.1	0	0.0	0	0.0	2	24.7	0	0.0	0	0.0	3	34.1
Rains	2	19.4	4	37.7	5	47.0	1	9.4	1	9.1	0	0.0	2	18.2	3	26.9
Randall	48	43.7	74	67.3	109	97.8	78	67.5	89	76.3	89	74.9	69	57.4	52	42.7
Reagan	0	0.0	2	64.5	1	32.9	0	0.0	0	0.0	3	95.5	2	64.1	1	32.2

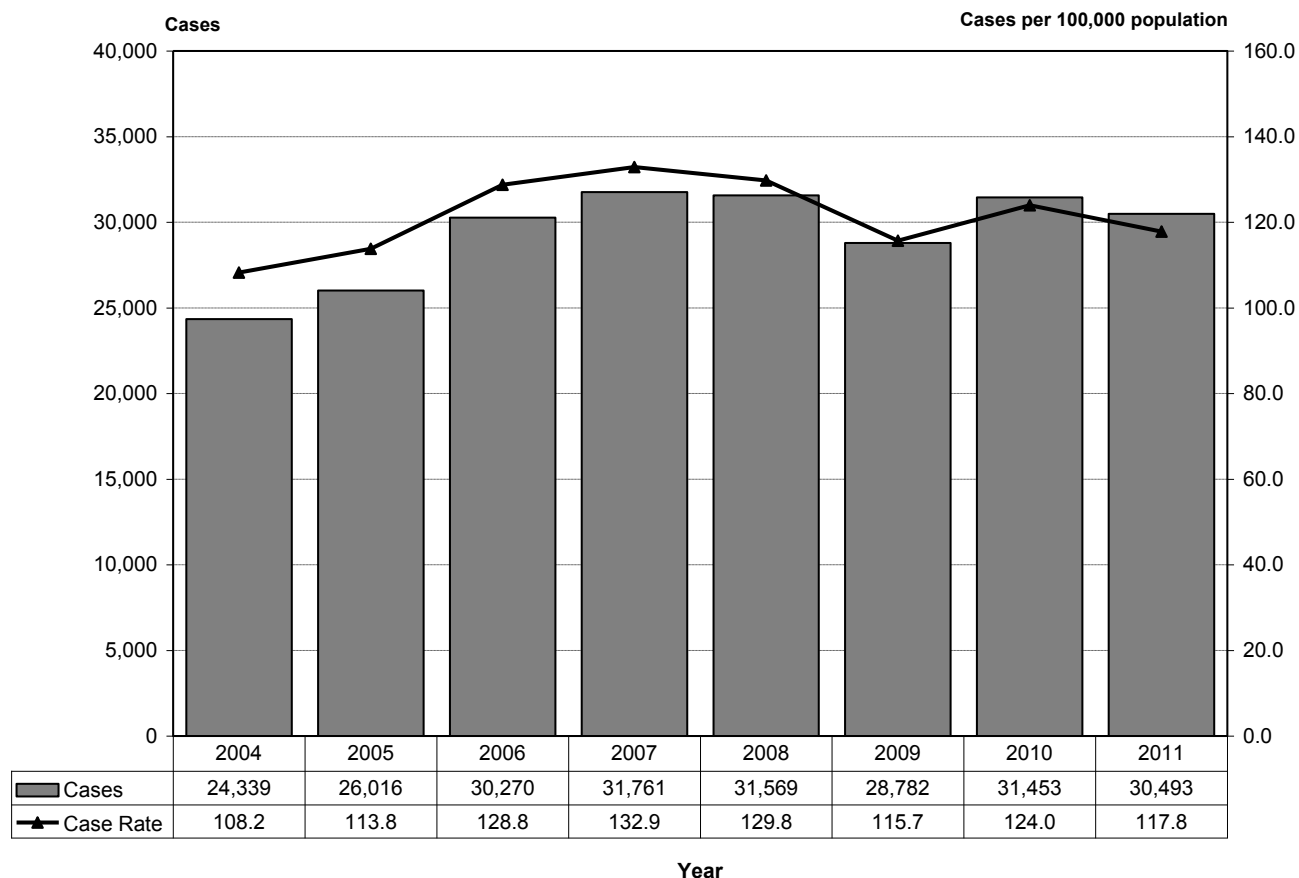
* Rates represent cases per 100,000 population.

Gonorrhea Cases and Rates by County of Residence, 2004-2011

County	2004		2005		2006		2007		2008		2009		2010		2011	
	Cases	Rate*	Cases	Rate*	Cases	Rate*	Cases	Rate*	Cases	Rate*	Cases	Rate*	Cases	Rate*	Cases	Rate*
Real	0	0.0	0	0.0	2	60.7	1	30.4	0	0.0	0	0.0	1	29.8	2	59.1
Red River	10	70.8	8	57.1	10	71.6	19	138.0	22	161.8	9	62.6	6	41.7	6	41.7
Reeves	4	33.7	3	25.8	5	43.1	1	8.7	7	61.5	11	97.6	4	36.1	5	46.0
Refugio	7	91.4	5	66.5	9	120.0	3	40.4	7	95.0	4	55.7	1	14.0	8	113.6
Roberts	0	0.0	0	0.0	0	0.0	0	0.0	0	0.0	0	0.0	0	0.0	0	0.0
Robertson	34	211.5	29	178.5	28	173.1	34	211.8	27	169.4	36	214.2	38	224.9	36	212.0
Rockwall	13	22.6	13	21.0	16	23.0	16	22.1	20	26.3	21	26.3	24	28.2	29	31.8
Runnels	4	36.0	4	35.6	9	81.7	0	0.0	3	27.8	2	17.1	1	8.5	0	0.0
Rusk	45	93.0	51	107.0	46	95.6	25	51.8	39	80.7	35	70.3	38	76.0	33	65.6
Sabine	6	56.7	1	9.6	3	28.7	4	38.5	10	96.1	11	101.6	4	36.9	3	27.6
San Augustine	6	66.4	2	22.1	24	260.4	14	152.6	11	121.8	15	157.2	9	93.9	14	145.3
San Jacinto	5	21.4	4	16.3	8	32.3	6	23.5	4	15.6	7	25.4	7	24.9	3	10.4
San Patricio	25	36.1	15	21.7	16	23.0	31	44.7	25	36.1	43	60.9	43	60.7	31	43.6
San Saba	0	0.0	1	16.2	1	16.4	0	0.0	4	66.3	0	0.0	1	15.7	2	31.2
Schleicher	0	0.0	1	35.0	1	34.4	1	34.0	1	34.2	1	31.6	1	31.3	2	62.1
Scurry	9	56.0	18	113.0	9	56.6	9	55.5	14	86.3	18	105.1	8	46.5	9	52.1
Shackelford	0	0.0	0	0.0	2	61.4	0	0.0	0	0.0	1	29.0	0	0.0	2	57.5
Shelby	24	93.5	10	39.3	31	120.7	29	112.8	33	125.9	24	90.7	22	82.7	26	97.2
Sherman	0	0.0	0	0.0	1	32.2	1	32.2	1	32.0	0	0.0	0	0.0	0	0.0
Smith	379	203.0	299	157.4	395	202.8	369	186.9	447	223.0	384	189.3	363	175.5	341	161.7
Somervell	0	0.0	0	0.0	0	0.0	3	37.1	1	12.3	0	0.0	2	23.3	1	11.4
Starr	9	15.0	10	16.3	6	9.6	14	22.4	24	38.3	18	27.3	11	16.3	25	36.4
Stephens	2	20.9	0	0.0	2	21.1	3	31.0	0	0.0	2	19.6	5	48.7	0	0.0
Sterling	0	0.0	0	0.0	0	0.0	1	83.2	0	0.0	0	0.0	0	0.0	0	0.0
Stonewall	2	129.5	1	67.6	0	0.0	1	68.0	1	65.4	0	0.0	0	0.0	0	0.0
Sutton	2	48.2	0	0.0	2	47.6	0	0.0	2	46.4	0	0.0	0	0.0	0	0.0
Swisher	6	75.5	5	61.9	10	123.5	6	74.7	0	0.0	6	73.0	10	121.8	12	146.5
Tarrant	2,257	141.9	2,535	156.4	2,764	165.8	2,623	154.3	2,800	160.8	2,449	137.5	2,537	139.0	2,186	116.8
Taylor	238	186.0	221	172.9	231	180.3	227	176.9	157	122.7	164	125.3	185	140.9	147	111.6
Terrell	0	0.0	0	0.0	0	0.0	0	0.0	0	0.0	0	0.0	0	0.0	0	0.0
Terry	38	306.2	18	144.3	12	97.1	17	139.2	22	180.6	11	94.6	14	121.5	18	157.9
Throckmorton	0	0.0	0	0.0	0	0.0	0	0.0	0	0.0	0	0.0	0	0.0	0	0.0
Titus	28	94.2	18	60.6	26	86.1	37	121.6	29	95.5	31	98.2	40	125.0	35	107.9
Tom Green	84	81.0	116	112.9	140	135.8	130	126.0	130	124.1	95	91.5	101	97.3	144	138.9
Travis	1,259	144.0	1,367	152.4	2,011	216.7	1,655	174.7	1,849	187.1	1,438	147.6	1,452	146.3	1,505	148.9
Trinity	12	83.8	14	97.5	7	49.1	13	90.9	10	70.0	5	33.2	8	52.7	1	6.5
Tyler	8	37.5	11	51.9	15	71.3	13	61.5	13	61.4	6	27.3	9	40.7	7	31.5
Upshur	21	57.4	26	70.5	31	82.9	29	77.6	24	63.6	19	50.0	44	114.9	27	70.0
Upton	1	31.3	2	64.8	0	0.0	0	0.0	2	61.9	4	126.1	1	31.8	1	31.9
Uvalde	7	26.3	9	33.7	9	35.0	4	15.5	8	31.1	10	36.1	11	39.5	12	42.8
Val Verde	8	16.9	17	36.0	12	25.3	11	23.1	11	23.0	16	32.2	29	57.9	18	35.6
Van Zandt	15	29.4	20	39.5	45	86.8	26	49.8	13	24.8	11	20.7	15	28.0	26	48.0
Victoria	140	163.9	130	152.1	121	140.2	99	114.3	107	123.3	150	169.1	69	77.4	91	101.6
Walker	26	41.1	17	26.7	46	71.8	72	112.1	72	111.5	50	76.6	88	134.9	60	92.1
Waller	52	142.8	30	82.1	46	119.6	42	108.4	47	121.3	50	120.9	55	130.0	39	90.2
Ward	0	0.0	1	9.6	9	86.8	5	49.1	16	152.1	9	89.8	3	30.3	8	81.6
Washington	22	69.8	24	75.5	51	158.5	56	171.9	41	125.8	60	181.0	52	155.3	34	100.6
Webb	35	15.8	31	13.6	36	15.4	44	18.5	120	50.4	50	19.9	49	19.0	67	25.4
Wharton	23	54.4	13	30.8	40	94.7	39	92.3	29	68.2	21	48.2	35	79.9	27	61.4
Wheeler	1	20.6	1	19.8	2	39.5	2	39.8	1	19.5	0	0.0	0	0.0	0	0.0
Wichita	258	201.8	299	232.3	350	268.2	296	227.7	250	192.0	171	133.5	145	113.6	154	121.0
Wilbarger	15	105.6	16	114.9	9	63.8	11	76.4	20	139.3	14	91.9	13	85.0	9	58.7
Willacy	3	14.5	2	9.7	7	33.5	3	14.3	14	66.7	9	41.2	6	27.2	6	27.0
Williamson	105	34.0	174	52.6	214	61.1	165	44.5	212	54.1	245	59.3	237	54.4	219	47.8
Wilson	12	31.9	10	26.2	10	25.5	14	34.5	8	19.5	11	25.0	17	37.3	24	51.1
Winkler	4	58.7	2	30.0	4	58.8	6	87.8	0	0.0	0	0.0	5	76.1	5	76.9
Wise	10	18.4	6	10.9	9	15.9	10	17.3	5	8.5	6	10.0	14	22.7	15	23.8
Wood	7	17.7	20	50.2	13	31.2	14	33.4	18	42.4	19	43.1	12	26.7	12	26.3
Yoakum	1	13.9	1	13.8	6	82.6	0	0.0	2	26.6	1	12.2	2	24.2	4	47.8
Young	4	22.4	1	5.6	10	55.3	3	16.4	7	38.4	3	16.2	6	32.2	3	16.0
Zapata	2	14.3	1	7.2	1	7.1	1	7.1	3	21.0	4	26.8	0	0.0	2	12.8
Zavala	1	8.5	2	17.1	7	59.9	4	33.7	8	67.5	7	55.0	4	31.1	2	15.4
Total	24,339	108.2	26,016	113.8	30,270	128.8	31,761	132.9	31,569	129.8	28,782	115.7	31,453	124.0	30,493	117.8

* Rates represent cases per 100,000 population.

Texas Gonorrhea Cases and Case Rates by Year of Report, 2004-2011



Gonorrhea Cases and Rates by Sex, Race/Ethnicity and Age Group, 2004-2011

County	2004		2005		2006		2007		2008		2009		2010		2011	
	Cases	Rate*	Cases	Rate*	Cases	Rate*	Cases	Rate*	Cases	Rate*	Cases	Rate*	Cases	Rate*	Cases	Rate*
Sex																
Male	11,881	105.9	12,218	107.0	14,725	125.3	15,645	130.8	14,853	121.8	12,996	104.1	14,386	112.9	14,247	109.5
Female	12,421	110.2	13,789	120.5	15,519	132.0	16,043	134.4	16,712	137.7	15,778	127.3	17,047	135.0	16,234	126.1
Unknown	37		9		26		73		4		8		20		12	
Race																
White	3,589	32.0	4,069	36.2	4,662	41.2	4,782	42.2	5,201	45.9	4,599	40.3	5,335	46.6	5,355	46.7
Black	12,816	499.1	14,170	545.5	15,852	576.6	16,917	607.9	16,730	592.5	14,981	521.5	15,730	537.6	14,214	477.2
Hispanic	4,997	63.7	5,104	62.7	6,096	71.8	6,212	70.7	7,479	82.0	7,368	77.7	7,953	80.8	8,785	86.0
Other	341	40.1	508	56.9	675	71.5	678	68.4	702	67.2	569	51.6	586	50.6	436	35.8
Unknown	2,596		2,165		2,985		3,172		1,457		1,265		1,849		1,703	
Age Group																
0 - 9	39	1.1	44	1.3	36	1.0	36	1.0	55	1.5	30	0.8	35	0.9	26	0.7
10 - 14	317	18.3	311	18.0	350	20.2	410	23.8	348	20.4	287	17.2	315	18.8	334	19.6
15 - 19	6,815	394.8	7,280	414.5	8,460	467.3	9,071	492.7	9,408	504.2	8,817	485.7	9,405	519.4	8,906	493.5
20 - 24	7,652	440.3	8,527	484.1	9,893	549.5	10,098	555.6	10,132	551.3	9,819	527.3	11,083	585.3	10,767	559.5
25 - 29	3,907	236.7	4,248	251.0	5,059	286.8	5,412	297.4	5,261	279.6	4,700	241.2	5,133	258.6	4,989	248.1
30 - 34	2,178	126.9	2,168	126.1	2,438	140.0	2,625	149.6	2,548	143.0	2,221	119.6	2,436	127.5	2,357	119.2
35 - 39	1,351	82.5	1,348	81.0	1,534	88.6	1,535	86.4	1,513	83.4	1,230	64.7	1,242	64.5	1,205	62.1
40 - 44	951	55.1	920	53.4	1,042	60.4	1,049	61.5	970	57.3	703	40.1	752	42.1	806	43.5
45+	1,035	14.5	1,117	15.2	1,380	18.0	1,421	18.1	1,274	15.8	944	11.4	1,015	11.9	1,079	12.3
Unknown	94		53		78		104		60		31		37		24	
Total	24,339	108.2	26,016	113.8	30,270	128.8	31,761	132.9	31,569	129.8	28,782	115.7	31,453	124.0	30,493	117.8

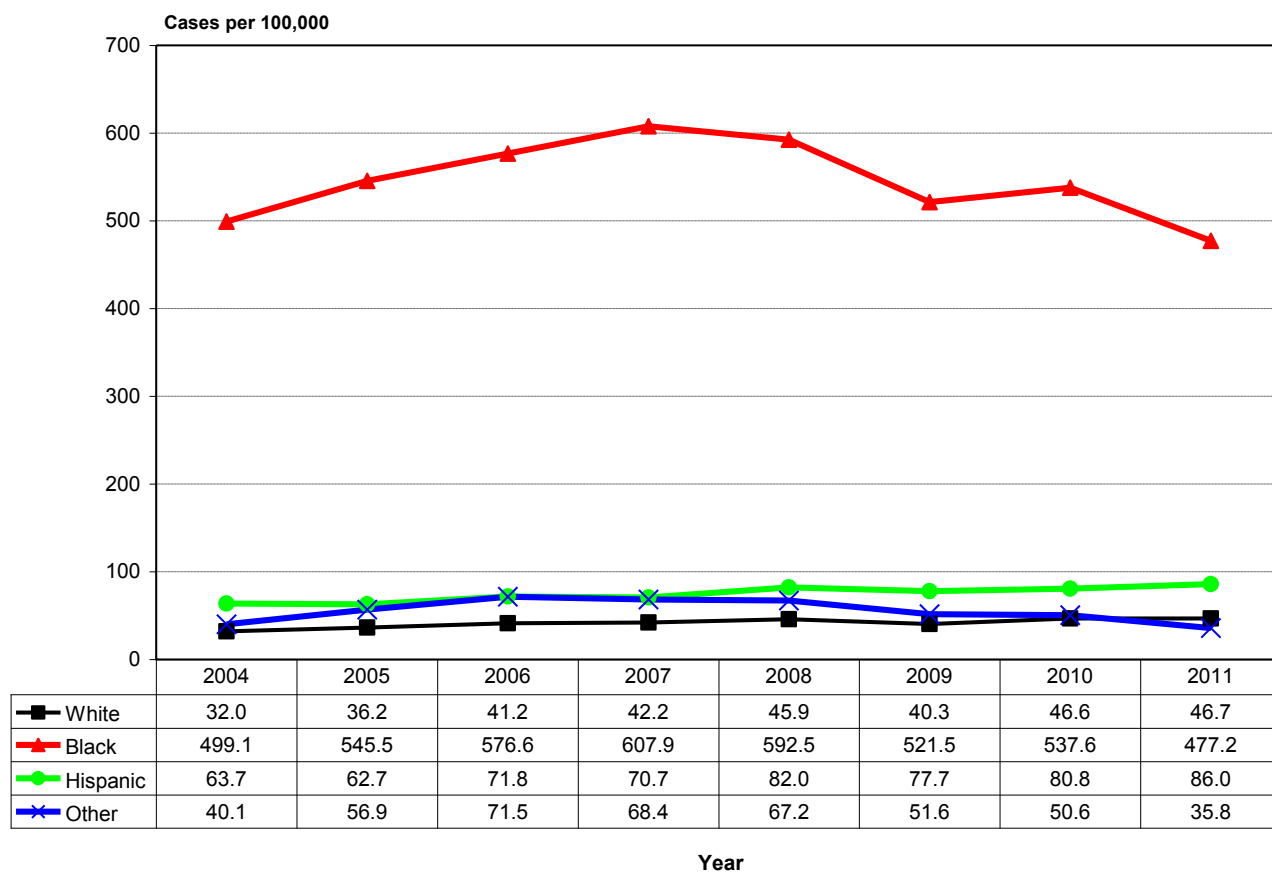
* Rates represent cases per 100,000 population.

Gonorrhea Cases by Age Group, Race/Ethnicity and Sex, 2011

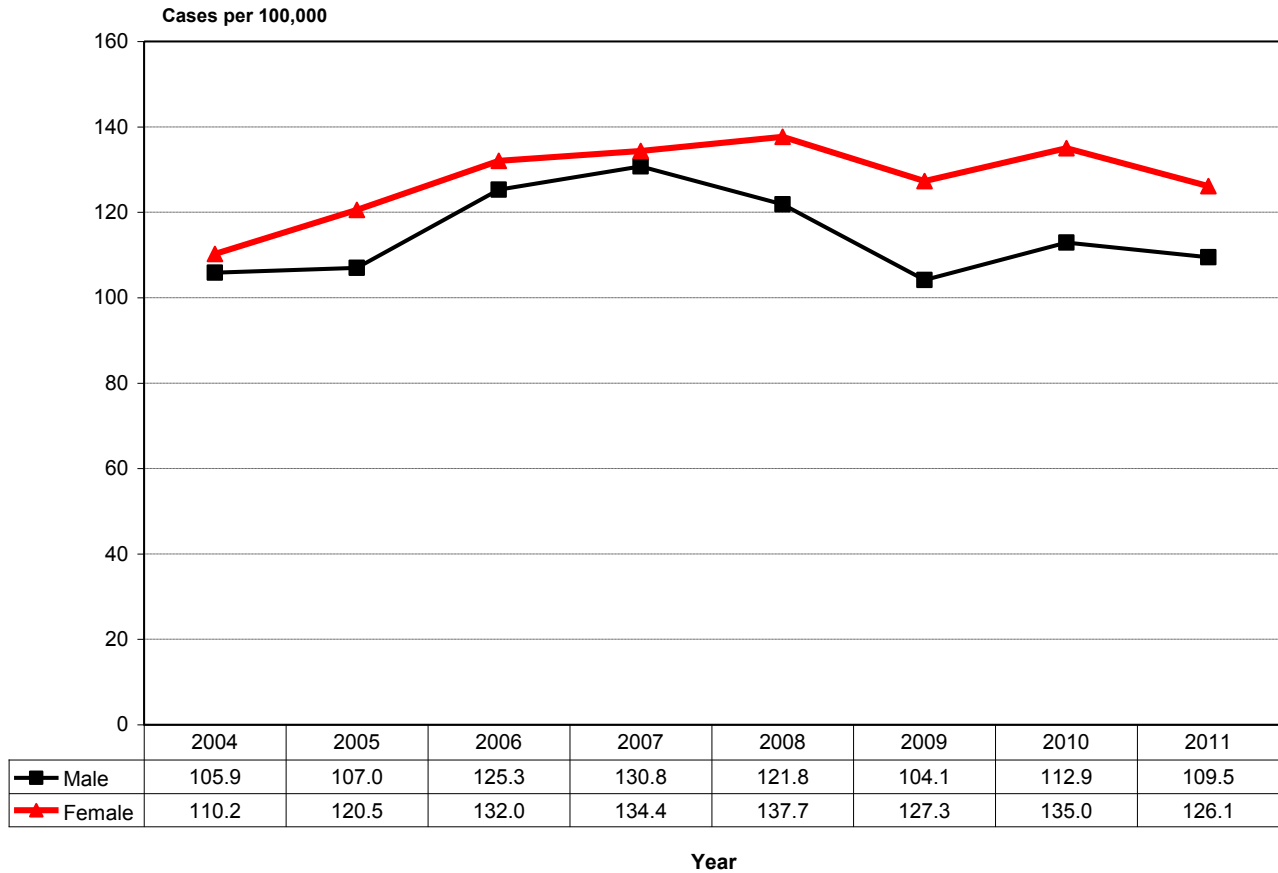
Age Group	Male						Female						Unk Sex	Total	Percent
	White	Black	Hisp.	Other	Unk	Total	White	Black	Hisp.	Other	Unk	Total			
0 - 9	1	4	2	0	1	8	1	9	8	0	0	18	0	26	0.1%
10 - 14	9	35	19	0	5	68	30	146	71	3	16	266	0	334	1.1%
15 - 19	385	1,540	859	37	222	3,043	929	2,926	1,605	77	323	5,860	3	8,906	29.2%
20 - 24	748	2,423	1,427	61	259	4,918	1,040	2,719	1,746	97	245	5,847	2	10,767	35.3%
25 - 29	438	1,208	835	47	145	2,673	481	937	753	23	121	2,315	1	4,989	16.4%
30 - 34	256	620	379	29	68	1,352	201	378	349	14	62	1,004	1	2,357	7.7%
35 - 39	185	329	179	11	54	758	101	151	157	8	30	447	0	1,205	4.0%
40 - 44	151	250	119	9	43	572	69	72	74	3	16	234	0	806	2.6%
45+	249	383	136	12	61	841	80	69	63	4	22	238	0	1,079	3.5%
Unk	1	7	4	1	1	14	0	4	0	0	1	5	5	24	0.1%
Total	2,423	6,799	3,959	207	859	14,247	2,932	7,411	4,826	229	836	16,234	12	30,493	
Percent	17.0%	47.7%	27.8%	1.5%	6.0%		18.1%	45.7%	29.7%	1.4%	5.1%				
Percent Male						46.7%	Percent Female						53.3%		

Total White	5,355	17.6%
Total Black	14,214	46.6%
Total Hispanic	8,785	28.8%
Total Other	436	1.4%
Total Unknown	1,703	5.6%
Total	30,493	

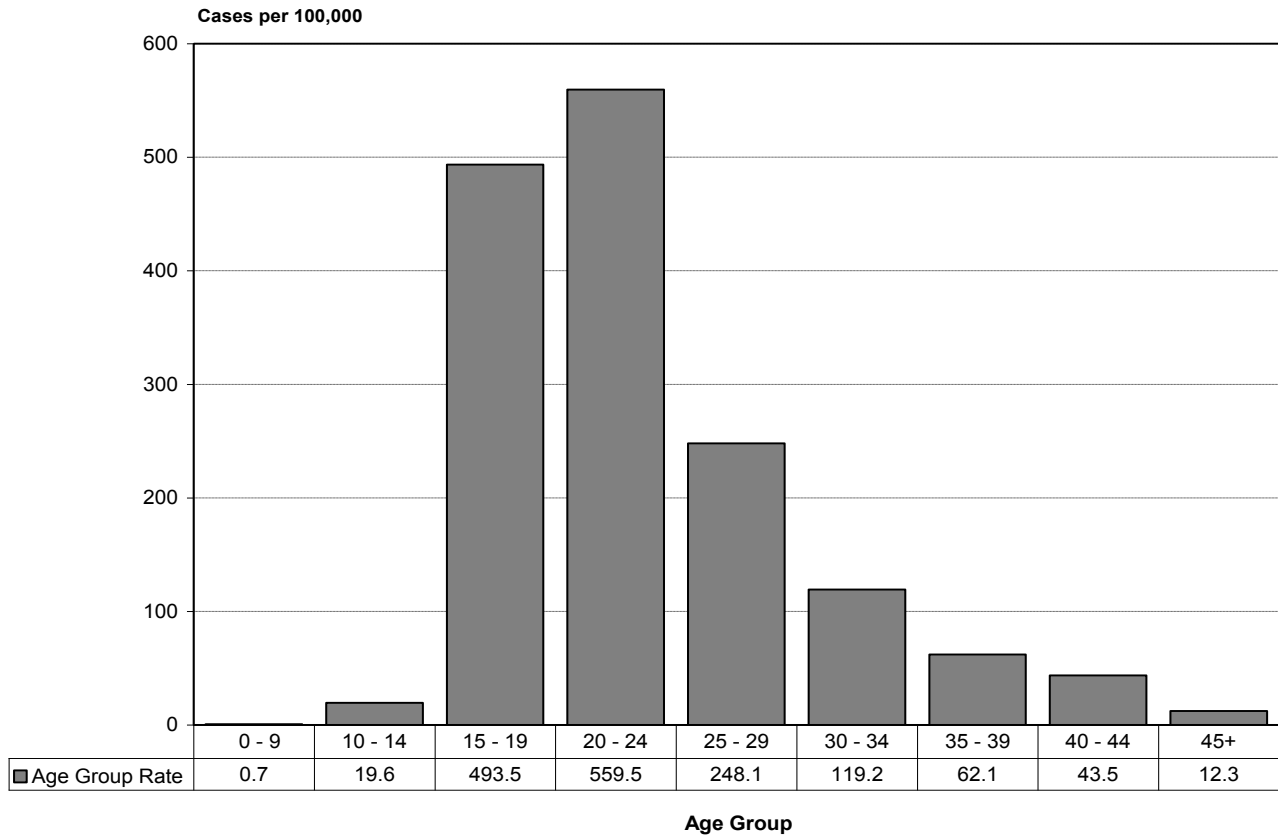
Texas Gonorrhea Case Rates by Race and Year of Report, 2004-2011



Texas Gonorrhea Case Rates by Sex and Year of Report, 2004-2011



Texas Gonorrhea Case Rates by Age Group and Year of Report, 2011



P&S Syphilis Cases and Rates by County of Residence, 2004-2011

County	2004		2005		2006		2007		2008		2009		2010		2011	
	Cases	Rate*	Cases	Rate*	Cases	Rate*	Cases	Rate*	Cases	Rate*	Cases	Rate*	Cases	Rate*	Cases	Rate*
Anderson	3	5.4	4	7.1	0	0.0	0	0.0	0	0.0	1	1.7	0	0.0	1	1.7
Andrews	0	0.0	0	0.0	0	0.0	0	0.0	0	0.0	0	0.0	0	0.0	2	13.9
Angelina	2	2.4	12	14.6	1	1.2	1	1.2	0	0.0	5	5.9	6	7.0	6	7.0
Aransas	1	4.2	0	0.0	0	0.0	0	0.0	0	0.0	0	0.0	0	0.0	0	0.0
Archer	0	0.0	0	0.0	0	0.0	0	0.0	0	0.0	0	0.0	0	0.0	0	0.0
Armstrong	0	0.0	0	0.0	0	0.0	0	0.0	0	0.0	0	0.0	0	0.0	0	0.0
Atascosa	1	2.3	1	2.4	1	2.4	0	0.0	2	4.6	0	0.0	3	6.5	1	2.1
Austin	0	0.0	0	0.0	0	0.0	0	0.0	1	3.7	1	3.5	1	3.5	2	6.8
Bailey	0	0.0	0	0.0	0	0.0	0	0.0	0	0.0	0	0.0	1	15.8	0	0.0
Bandera	0	0.0	0	0.0	0	0.0	0	0.0	3	14.8	0	0.0	0	0.0	0	0.0
Bastrop	0	0.0	0	0.0	2	2.8	0	0.0	3	4.1	1	1.3	7	8.6	2	2.4
Baylor	0	0.0	0	0.0	0	0.0	0	0.0	0	0.0	0	0.0	0	0.0	0	0.0
Bee	0	0.0	0	0.0	0	0.0	0	0.0	0	0.0	0	0.0	0	0.0	0	0.0
Bell	2	0.8	4	1.5	2	0.7	7	2.5	5	1.8	8	2.8	16	5.5	5	1.7
Bexar	108	7.3	129	8.5	131	8.5	153	9.7	187	11.6	213	13.2	182	11.1	184	11.1
Blanco	0	0.0	0	0.0	0	0.0	0	0.0	0	0.0	0	0.0	1	9.7	0	0.0
Borden	0	0.0	0	0.0	0	0.0	0	0.0	0	0.0	0	0.0	0	0.0	0	0.0
Bosque	0	0.0	0	0.0	0	0.0	0	0.0	1	5.5	0	0.0	0	0.0	0	0.0
Bowie	0	0.0	1	1.1	0	0.0	2	2.1	19	20.4	53	57.2	38	40.9	19	20.4
Brazoria	4	1.5	2	0.7	7	2.4	12	4.1	8	2.7	7	2.3	6	1.9	9	2.7
Brazos	2	1.2	3	1.9	4	2.4	3	1.8	8	4.6	4	2.3	11	6.3	4	2.2
Brewster	0	0.0	0	0.0	0	0.0	0	0.0	0	0.0	0	0.0	0	0.0	0	0.0
Briscoe	0	0.0	0	0.0	0	0.0	0	0.0	0	0.0	0	0.0	0	0.0	0	0.0
Brooks	0	0.0	0	0.0	0	0.0	0	0.0	0	0.0	0	0.0	0	0.0	0	0.0
Brown	0	0.0	0	0.0	1	2.6	0	0.0	0	0.0	0	0.0	0	0.0	0	0.0
Burleson	0	0.0	0	0.0	0	0.0	0	0.0	0	0.0	0	0.0	0	0.0	0	0.0
Burnet	0	0.0	1	2.5	0	0.0	0	0.0	1	2.3	0	0.0	0	0.0	0	0.0
Caldwell	0	0.0	0	0.0	0	0.0	1	2.8	1	2.7	0	0.0	0	0.0	0	0.0
Calhoun	0	0.0	0	0.0	0	0.0	1	4.8	0	0.0	0	0.0	0	0.0	0	0.0
Callahan	0	0.0	0	0.0	0	0.0	0	0.0	0	0.0	0	0.0	0	0.0	0	0.0
Cameron	2	0.5	0	0.0	6	1.5	2	0.5	0	0.0	0	0.0	0	0.0	0	0.0
Camp	0	0.0	0	0.0	0	0.0	1	7.8	0	0.0	0	0.0	0	0.0	0	0.0
Carson	0	0.0	0	0.0	0	0.0	0	0.0	0	0.0	0	0.0	0	0.0	0	0.0
Cass	0	0.0	0	0.0	0	0.0	0	0.0	1	3.3	5	16.3	5	16.3	4	13.1
Castro	0	0.0	0	0.0	0	0.0	0	0.0	0	0.0	0	0.0	0	0.0	0	0.0
Chambers	0	0.0	0	0.0	0	0.0	0	0.0	0	0.0	1	2.9	1	2.8	0	0.0
Cherokee	1	2.1	1	2.1	0	0.0	1	2.0	1	2.0	2	4.0	1	2.0	2	4.0
Childress	0	0.0	0	0.0	0	0.0	0	0.0	0	0.0	0	0.0	0	0.0	0	0.0
Clay	0	0.0	0	0.0	0	0.0	0	0.0	0	0.0	0	0.0	0	0.0	0	0.0
Cochran	0	0.0	0	0.0	0	0.0	0	0.0	0	0.0	0	0.0	0	0.0	0	0.0
Coke	0	0.0	0	0.0	0	0.0	0	0.0	0	0.0	0	0.0	0	0.0	0	0.0
Coleman	0	0.0	0	0.0	0	0.0	0	0.0	0	0.0	0	0.0	0	0.0	0	0.0
Collin	4	0.6	7	1.1	7	1.0	7	1.0	5	0.7	13	1.6	6	0.7	7	0.8
Collingsworth	0	0.0	0	0.0	0	0.0	0	0.0	0	0.0	0	0.0	0	0.0	0	0.0
Colorado	0	0.0	0	0.0	0	0.0	1	4.6	1	4.6	3	13.6	2	9.0	1	4.5
Comal	1	1.1	0	0.0	2	2.0	1	0.9	2	1.8	2	1.7	1	0.8	0	0.0
Comanche	0	0.0	0	0.0	0	0.0	0	0.0	0	0.0	0	0.0	0	0.0	0	0.0
Concho	0	0.0	1	26.0	0	0.0	0	0.0	0	0.0	0	0.0	0	0.0	0	0.0
Cooke	0	0.0	0	0.0	0	0.0	0	0.0	0	0.0	0	0.0	0	0.0	0	0.0
Coryell	0	0.0	1	1.3	0	0.0	0	0.0	1	1.3	0	0.0	2	2.5	0	0.0
Cottle	0	0.0	0	0.0	0	0.0	0	0.0	0	0.0	0	0.0	0	0.0	0	0.0
Crane	0	0.0	0	0.0	0	0.0	0	0.0	0	0.0	0	0.0	0	0.0	0	0.0
Crockett	0	0.0	0	0.0	0	0.0	0	0.0	0	0.0	0	0.0	0	0.0	0	0.0
Crosby	0	0.0	0	0.0	0	0.0	0	0.0	0	0.0	1	15.2	0	0.0	0	0.0
Culberson	0	0.0	0	0.0	0	0.0	0	0.0	0	0.0	0	0.0	0	0.0	0	0.0
Dallam	0	0.0	0	0.0	0	0.0	0	0.0	0	0.0	0	0.0	0	0.0	0	0.0
Dallas	183	8.0	173	7.5	209	8.9	155	6.6	214	9.0	294	12.2	177	7.3	174	7.1
Dawson	0	0.0	0	0.0	0	0.0	0	0.0	0	0.0	0	0.0	0	0.0	0	0.0
Deaf Smith	0	0.0	0	0.0	0	0.0	0	0.0	0	0.0	0	0.0	1	4.9	0	0.0
Delta	0	0.0	0	0.0	0	0.0	0	0.0	0	0.0	0	0.0	0	0.0	0	0.0
Denton	11	2.1	4	0.7	1	0.2	2	0.3	3	0.5	5	0.7	2	0.3	3	0.4
DeWitt	1	4.9	0	0.0	0	0.0	0	0.0	1	5.0	1	4.9	0	0.0	0	0.0
Dickens	0	0.0	0	0.0	0	0.0	0	0.0	0	0.0	0	0.0	0	0.0	0	0.0
Dimmit	0	0.0	0	0.0	0	0.0	0	0.0	0	0.0	0	0.0	0	0.0	0	0.0

* Rates represent cases per 100,000 population.

P&S Syphilis Cases and Rates by County of Residence, 2004-2011

County	2004		2005		2006		2007		2008		2009		2010		2011	
	Cases	Rate*	Cases	Rate*	Cases	Rate*	Cases	Rate*	Cases	Rate*	Cases	Rate*	Cases	Rate*	Cases	Rate*
Donley	0	0.0	0	0.0	0	0.0	0	0.0	0	0.0	0	0.0	0	0.0	0	0.0
Duval	0	0.0	0	0.0	0	0.0	0	0.0	0	0.0	0	0.0	0	0.0	0	0.0
Eastland	0	0.0	0	0.0	0	0.0	0	0.0	0	0.0	0	0.0	1	5.3	0	0.0
Ector	0	0.0	6	4.8	0	0.0	1	0.8	0	0.0	5	3.8	3	2.3	2	1.5
Edwards	0	0.0	0	0.0	0	0.0	0	0.0	0	0.0	0	0.0	0	0.0	0	0.0
Ellis	5	3.9	12	9.0	4	2.9	5	3.5	1	0.7	4	2.6	2	1.3	1	0.6
El Paso	9	1.3	6	0.8	14	1.9	10	1.3	7	0.9	13	1.7	16	2.1	14	1.8
Erath	0	0.0	0	0.0	0	0.0	0	0.0	0	0.0	0	0.0	0	0.0	0	0.0
Falls	0	0.0	0	0.0	11	61.0	0	0.0	0	0.0	1	5.3	0	0.0	0	0.0
Fannin	0	0.0	0	0.0	0	0.0	0	0.0	0	0.0	0	0.0	0	0.0	0	0.0
Fayette	0	0.0	0	0.0	0	0.0	1	4.2	0	0.0	0	0.0	0	0.0	0	0.0
Fisher	0	0.0	0	0.0	0	0.0	0	0.0	0	0.0	0	0.0	0	0.0	0	0.0
Floyd	0	0.0	0	0.0	0	0.0	0	0.0	0	0.0	0	0.0	0	0.0	1	14.6
Foard	0	0.0	0	0.0	0	0.0	0	0.0	0	0.0	0	0.0	0	0.0	0	0.0
Fort Bend	6	1.4	3	0.7	7	1.4	18	3.5	23	4.3	32	5.8	23	4.0	17	2.8
Franklin	0	0.0	0	0.0	0	0.0	0	0.0	1	9.5	0	0.0	0	0.0	0	0.0
Freestone	3	15.9	0	0.0	0	0.0	0	0.0	0	0.0	0	0.0	1	4.9	0	0.0
Frio	0	0.0	0	0.0	0	0.0	0	0.0	0	0.0	0	0.0	0	0.0	0	0.0
Gaines	0	0.0	0	0.0	0	0.0	0	0.0	0	0.0	0	0.0	1	6.1	0	0.0
Galveston	6	2.2	11	4.0	7	2.5	13	4.6	29	10.1	40	13.8	16	5.4	10	3.3
Garza	0	0.0	1	20.2	0	0.0	0	0.0	0	0.0	0	0.0	0	0.0	0	0.0
Gillespie	1	4.4	0	0.0	0	0.0	0	0.0	0	0.0	0	0.0	0	0.0	0	0.0
Glasscock	0	0.0	0	0.0	0	0.0	0	0.0	0	0.0	0	0.0	0	0.0	0	0.0
Goliad	0	0.0	0	0.0	0	0.0	0	0.0	0	0.0	0	0.0	0	0.0	1	12.9
Gonzales	0	0.0	0	0.0	0	0.0	0	0.0	0	0.0	0	0.0	0	0.0	0	0.0
Gray	0	0.0	0	0.0	0	0.0	0	0.0	1	4.4	0	0.0	0	0.0	0	0.0
Grayson	0	0.0	0	0.0	2	1.7	0	0.0	0	0.0	1	0.8	2	1.7	0	0.0
Gregg	2	1.7	4	3.5	1	0.8	4	3.4	5	4.2	26	21.4	21	17.1	10	8.0
Grimes	0	0.0	0	0.0	0	0.0	0	0.0	0	0.0	0	0.0	1	3.8	0	0.0
Guadalupe	3	2.9	0	0.0	2	1.8	0	0.0	2	1.7	1	0.8	0	0.0	1	0.7
Hale	0	0.0	0	0.0	0	0.0	0	0.0	0	0.0	0	0.0	1	2.7	3	8.1
Hall	0	0.0	0	0.0	0	0.0	0	0.0	0	0.0	0	0.0	0	0.0	0	0.0
Hamilton	0	0.0	0	0.0	0	0.0	0	0.0	0	0.0	0	0.0	0	0.0	0	0.0
Hansford	0	0.0	0	0.0	0	0.0	0	0.0	0	0.0	0	0.0	0	0.0	0	0.0
Hardeman	0	0.0	0	0.0	0	0.0	0	0.0	0	0.0	0	0.0	0	0.0	0	0.0
Hardin	0	0.0	0	0.0	0	0.0	0	0.0	5	9.7	2	3.9	3	5.7	2	3.8
Harris	213	5.8	252	6.8	370	9.7	461	11.8	380	9.6	327	8.1	269	6.6	273	6.5
Harrison	0	0.0	0	0.0	2	3.1	2	3.1	2	3.1	5	7.4	4	5.9	2	2.9
Hartley	0	0.0	0	0.0	0	0.0	0	0.0	0	0.0	0	0.0	0	0.0	0	0.0
Haskell	0	0.0	0	0.0	0	0.0	0	0.0	0	0.0	0	0.0	0	0.0	0	0.0
Hays	1	0.8	1	0.8	1	0.7	3	2.1	3	2.0	3	1.9	5	3.0	6	3.5
Hemphill	0	0.0	0	0.0	0	0.0	0	0.0	0	0.0	0	0.0	0	0.0	0	0.0
Henderson	3	3.9	1	1.3	0	0.0	0	0.0	0	0.0	1	1.2	1	1.2	0	0.0
Hidalgo	5	0.8	2	0.3	5	0.7	2	0.3	1	0.1	0	0.0	0	0.0	4	0.5
Hill	0	0.0	0	0.0	0	0.0	0	0.0	0	0.0	1	2.7	1	2.7	1	2.7
Hockley	0	0.0	0	0.0	0	0.0	0	0.0	1	4.5	2	8.4	1	4.2	0	0.0
Hood	3	6.5	0	0.0	0	0.0	0	0.0	0	0.0	0	0.0	0	0.0	0	0.0
Hopkins	0	0.0	0	0.0	0	0.0	0	0.0	0	0.0	0	0.0	0	0.0	0	0.0
Houston	0	0.0	0	0.0	0	0.0	0	0.0	0	0.0	1	4.1	0	0.0	0	0.0
Howard	0	0.0	0	0.0	0	0.0	2	6.1	0	0.0	0	0.0	0	0.0	0	0.0
Hudspeth	0	0.0	0	0.0	0	0.0	0	0.0	0	0.0	0	0.0	0	0.0	0	0.0
Hunt	1	1.2	0	0.0	1	1.2	2	2.4	0	0.0	0	0.0	1	1.1	0	0.0
Hutchinson	0	0.0	0	0.0	0	0.0	0	0.0	0	0.0	0	0.0	0	0.0	0	0.0
Irion	0	0.0	0	0.0	0	0.0	0	0.0	0	0.0	0	0.0	0	0.0	0	0.0
Jack	0	0.0	0	0.0	0	0.0	0	0.0	0	0.0	0	0.0	0	0.0	0	0.0
Jackson	0	0.0	0	0.0	0	0.0	1	6.8	0	0.0	0	0.0	1	6.5	0	0.0
Jasper	0	0.0	0	0.0	0	0.0	0	0.0	4	11.3	2	5.6	1	2.8	0	0.0
Jeff Davis	0	0.0	0	0.0	0	0.0	0	0.0	0	0.0	0	0.0	0	0.0	0	0.0
Jefferson	4	1.6	2	0.8	4	1.6	41	16.7	141	57.3	158	64.9	52	21.4	46	19.0
Jim Hogg	0	0.0	0	0.0	0	0.0	0	0.0	0	0.0	0	0.0	0	0.0	0	0.0
Jim Wells	0	0.0	0	0.0	0	0.0	0	0.0	0	0.0	0	0.0	0	0.0	0	0.0
Johnson	0	0.0	0	0.0	0	0.0	0	0.0	1	0.6	0	0.0	1	0.6	2	1.1
Jones	3	14.6	1	4.8	0	0.0	0	0.0	0	0.0	0	0.0	1	4.8	2	9.6
Karnes	0	0.0	0	0.0	0	0.0	0	0.0	0	0.0	0	0.0	0	0.0	0	0.0

* Rates represent cases per 100,000 population.

P&S Syphilis Cases and Rates by County of Residence, 2004-2011

County	2004		2005		2006		2007		2008		2009		2010		2011	
	Cases	Rate*	Cases	Rate*	Cases	Rate*	Cases	Rate*	Cases	Rate*	Cases	Rate*	Cases	Rate*	Cases	Rate*
Kaufman	6	7.0	6	6.7	16	17.1	9	9.3	1	1.0	2	1.9	0	0.0	1	0.9
Kendall	1	3.6	0	0.0	0	0.0	1	3.1	0	0.0	0	0.0	0	0.0	1	2.7
Kenedy	0	0.0	0	0.0	0	0.0	0	0.0	0	0.0	0	0.0	0	0.0	0	0.0
Kent	0	0.0	0	0.0	0	0.0	0	0.0	0	0.0	0	0.0	0	0.0	0	0.0
Kerr	0	0.0	0	0.0	0	0.0	0	0.0	0	0.0	0	0.0	0	0.0	0	0.0
Kimble	0	0.0	0	0.0	0	0.0	0	0.0	0	0.0	0	0.0	0	0.0	0	0.0
King	0	0.0	0	0.0	0	0.0	0	0.0	0	0.0	0	0.0	0	0.0	0	0.0
Kinney	0	0.0	0	0.0	0	0.0	0	0.0	0	0.0	0	0.0	0	0.0	0	0.0
Kleberg	0	0.0	0	0.0	0	0.0	0	0.0	0	0.0	0	0.0	0	0.0	0	0.0
Knox	0	0.0	0	0.0	0	0.0	0	0.0	0	0.0	0	0.0	0	0.0	0	0.0
Lamar	0	0.0	1	2.0	1	2.0	0	0.0	0	0.0	1	2.0	0	0.0	0	0.0
Lamb	0	0.0	0	0.0	0	0.0	0	0.0	0	0.0	0	0.0	0	0.0	0	0.0
Lampasas	0	0.0	0	0.0	0	0.0	0	0.0	0	0.0	0	0.0	0	0.0	1	4.3
La Salle	0	0.0	0	0.0	0	0.0	0	0.0	1	16.8	0	0.0	0	0.0	0	0.0
Lavaca	0	0.0	0	0.0	0	0.0	0	0.0	1	5.1	0	0.0	0	0.0	0	0.0
Lee	0	0.0	0	0.0	0	0.0	0	0.0	0	0.0	0	0.0	0	0.0	0	0.0
Leon	1	6.2	0	0.0	1	6.2	0	0.0	0	0.0	1	6.0	0	0.0	0	0.0
Liberty	5	6.6	6	7.8	0	0.0	4	5.2	2	2.6	2	2.5	2	2.4	0	0.0
Limestone	3	13.3	0	0.0	1	4.5	0	0.0	2	9.0	7	30.1	1	4.3	0	0.0
Lipscomb	0	0.0	0	0.0	0	0.0	0	0.0	0	0.0	0	0.0	0	0.0	0	0.0
Live Oak	0	0.0	0	0.0	0	0.0	0	0.0	0	0.0	0	0.0	0	0.0	0	0.0
Llano	0	0.0	0	0.0	1	5.3	2	10.5	1	5.2	0	0.0	0	0.0	0	0.0
Loving	0	0.0	0	0.0	0	0.0	0	0.0	0	0.0	0	0.0	0	0.0	0	0.0
Lubbock	5	2.0	0	0.0	6	2.4	5	1.9	20	7.6	20	7.5	13	4.9	12	4.5
Lynn	0	0.0	0	0.0	0	0.0	0	0.0	0	0.0	1	16.7	0	0.0	0	0.0
McCulloch	0	0.0	0	0.0	0	0.0	0	0.0	0	0.0	0	0.0	0	0.0	0	0.0
McLennan	43	19.6	37	16.6	26	11.6	18	8.0	13	5.7	6	2.6	5	2.1	10	4.2
McMullen	0	0.0	0	0.0	0	0.0	0	0.0	0	0.0	0	0.0	0	0.0	0	0.0
Madison	0	0.0	0	0.0	0	0.0	0	0.0	1	7.3	0	0.0	1	6.9	2	13.6
Marion	0	0.0	0	0.0	0	0.0	0	0.0	1	9.4	0	0.0	0	0.0	0	0.0
Martin	0	0.0	0	0.0	0	0.0	0	0.0	0	0.0	0	0.0	0	0.0	0	0.0
Mason	1	25.6	0	0.0	0	0.0	0	0.0	0	0.0	0	0.0	0	0.0	0	0.0
Matagorda	1	2.6	0	0.0	0	0.0	1	2.7	1	2.7	3	7.7	0	0.0	0	0.0
Maverick	1	2.0	0	0.0	1	1.9	0	0.0	0	0.0	0	0.0	0	0.0	2	3.6
Medina	3	7.1	1	2.3	0	0.0	0	0.0	1	2.3	0	0.0	0	0.0	0	0.0
Menard	0	0.0	0	0.0	0	0.0	0	0.0	0	0.0	0	0.0	0	0.0	0	0.0
Midland	0	0.0	1	0.8	1	0.8	0	0.0	0	0.0	1	0.8	0	0.0	1	0.8
Milam	0	0.0	0	0.0	0	0.0	0	0.0	1	3.9	0	0.0	0	0.0	0	0.0
Mills	0	0.0	0	0.0	0	0.0	0	0.0	0	0.0	0	0.0	0	0.0	0	0.0
Mitchell	0	0.0	0	0.0	0	0.0	0	0.0	0	0.0	0	0.0	0	0.0	0	0.0
Montague	0	0.0	0	0.0	0	0.0	0	0.0	0	0.0	0	0.0	0	0.0	0	0.0
Montgomery	3	0.8	4	1.1	1	0.3	1	0.2	11	2.6	19	4.2	8	1.7	3	0.6
Moore	0	0.0	0	0.0	0	0.0	0	0.0	0	0.0	1	4.8	0	0.0	0	0.0
Morris	0	0.0	0	0.0	0	0.0	0	0.0	4	30.6	0	0.0	1	7.4	0	0.0
Motley	0	0.0	0	0.0	0	0.0	0	0.0	0	0.0	0	0.0	0	0.0	0	0.0
Nacogdoches	0	0.0	1	1.6	3	4.8	8	12.8	2	3.2	2	3.1	0	0.0	0	0.0
Navarro	3	6.3	0	0.0	2	4.1	1	2.0	0	0.0	3	5.9	2	3.9	0	0.0
Newton	0	0.0	0	0.0	0	0.0	0	0.0	0	0.0	0	0.0	1	6.7	1	6.7
Nolan	0	0.0	0	0.0	0	0.0	0	0.0	0	0.0	0	0.0	0	0.0	0	0.0
Nueces	2	0.6	6	1.9	7	2.2	6	1.9	7	2.2	3	0.9	13	4.0	23	7.1
Ochiltree	0	0.0	0	0.0	0	0.0	0	0.0	0	0.0	0	0.0	0	0.0	0	0.0
Oldham	0	0.0	0	0.0	0	0.0	0	0.0	0	0.0	0	0.0	0	0.0	0	0.0
Orange	1	1.2	2	2.4	1	1.2	1	1.2	12	14.3	14	16.5	4	4.7	8	9.4
Palo Pinto	0	0.0	0	0.0	0	0.0	0	0.0	0	0.0	0	0.0	0	0.0	0	0.0
Panola	1	4.4	1	4.3	0	0.0	2	8.6	2	8.6	1	4.2	0	0.0	0	0.0
Parker	1	1.0	0	0.0	1	0.9	1	0.9	1	0.9	1	0.9	2	1.7	0	0.0
Parmer	0	0.0	0	0.0	0	0.0	0	0.0	1	10.4	0	0.0	0	0.0	0	0.0
Pecos	0	0.0	0	0.0	0	0.0	0	0.0	0	0.0	1	5.6	0	0.0	0	0.0
Polk	0	0.0	2	4.4	1	2.2	0	0.0	0	0.0	0	0.0	1	2.0	2	3.9
Potter	5	4.2	0	0.0	7	5.8	7	5.8	5	4.1	1	0.8	1	0.8	0	0.0
Presidio	0	0.0	0	0.0	0	0.0	0	0.0	0	0.0	0	0.0	0	0.0	0	0.0
Rains	0	0.0	0	0.0	0	0.0	0	0.0	0	0.0	0	0.0	0	0.0	0	0.0
Randall	0	0.0	0	0.0	3	2.7	3	2.6	1	0.9	0	0.0	2	1.7	1	0.8
Reagan	0	0.0	0	0.0	0	0.0	0	0.0	0	0.0	0	0.0	0	0.0	0	0.0

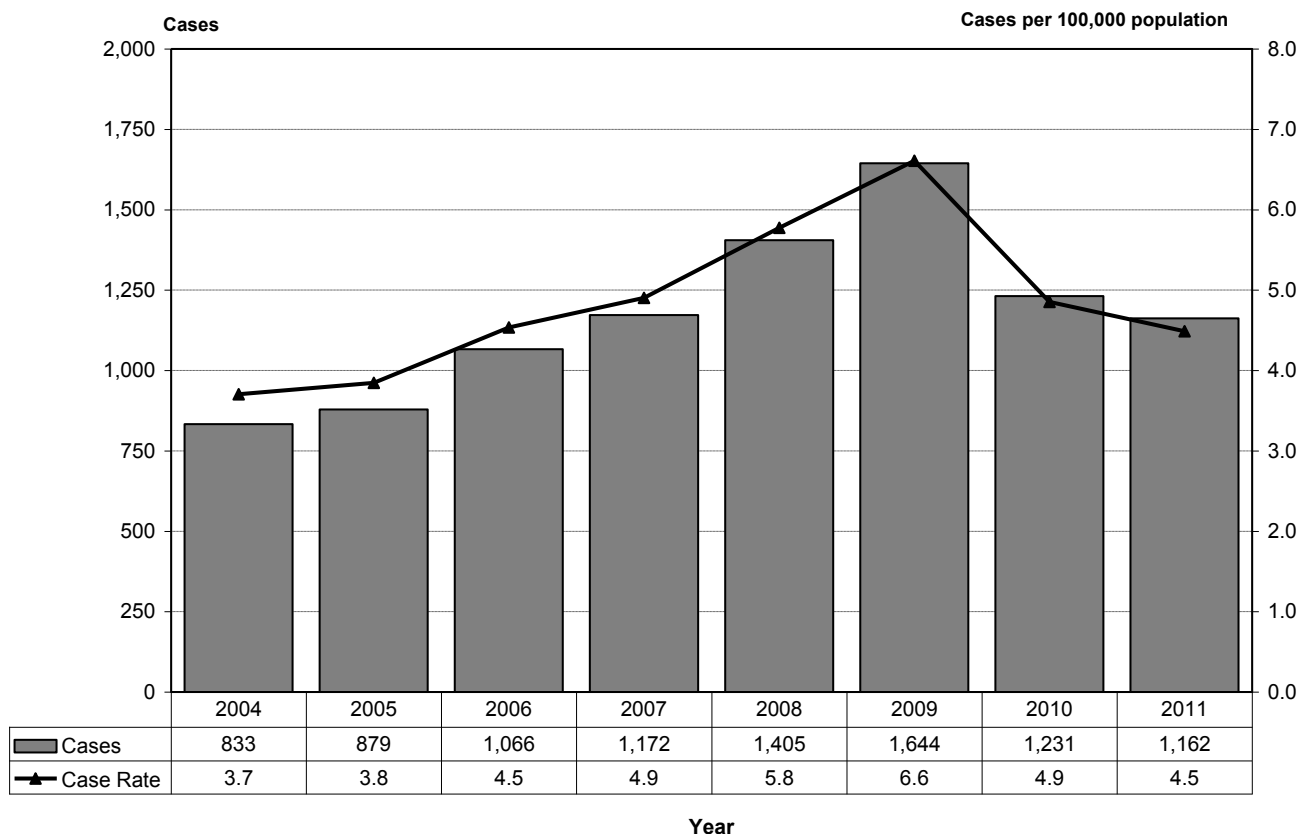
* Rates represent cases per 100,000 population.

P&S Syphilis Cases and Rates by County of Residence, 2004-2011

County	2004		2005		2006		2007		2008		2009		2010		2011	
	Cases	Rate*	Cases	Rate*	Cases	Rate*	Cases	Rate*	Cases	Rate*	Cases	Rate*	Cases	Rate*	Cases	Rate*
Real	0	0.0	0	0.0	0	0.0	0	0.0	0	0.0	0	0.0	0	0.0	0	0.0
Red River	0	0.0	0	0.0	0	0.0	0	0.0	0	0.0	0	0.0	0	0.0	0	0.0
Reeves	0	0.0	0	0.0	0	0.0	0	0.0	0	0.0	0	0.0	0	0.0	0	0.0
Refugio	0	0.0	0	0.0	0	0.0	1	13.5	0	0.0	0	0.0	0	0.0	0	0.0
Roberts	0	0.0	0	0.0	0	0.0	0	0.0	0	0.0	0	0.0	0	0.0	0	0.0
Robertson	0	0.0	1	6.2	1	6.2	2	12.5	4	25.1	3	17.9	0	0.0	1	5.9
Rockwall	0	0.0	0	0.0	0	0.0	0	0.0	0	0.0	0	0.0	1	1.2	0	0.0
Runnels	0	0.0	0	0.0	0	0.0	0	0.0	0	0.0	0	0.0	0	0.0	0	0.0
Rusk	0	0.0	2	4.2	0	0.0	0	0.0	1	2.1	5	10.0	0	0.0	1	2.0
Sabine	0	0.0	0	0.0	1	9.6	0	0.0	1	9.6	0	0.0	0	0.0	0	0.0
San Augustine	0	0.0	0	0.0	0	0.0	0	0.0	0	0.0	0	0.0	0	0.0	0	0.0
San Jacinto	0	0.0	1	4.1	0	0.0	0	0.0	1	3.9	0	0.0	0	0.0	0	0.0
San Patricio	0	0.0	0	0.0	1	1.4	0	0.0	1	1.4	0	0.0	0	0.0	1	1.4
San Saba	0	0.0	0	0.0	0	0.0	0	0.0	0	0.0	0	0.0	0	0.0	0	0.0
Schleicher	0	0.0	0	0.0	0	0.0	0	0.0	0	0.0	0	0.0	0	0.0	0	0.0
Scurry	0	0.0	0	0.0	0	0.0	0	0.0	0	0.0	0	0.0	0	0.0	0	0.0
Shackelford	0	0.0	0	0.0	0	0.0	0	0.0	0	0.0	0	0.0	0	0.0	0	0.0
Shelby	0	0.0	0	0.0	0	0.0	1	3.9	1	3.8	0	0.0	1	3.8	0	0.0
Sherman	0	0.0	0	0.0	0	0.0	0	0.0	0	0.0	0	0.0	0	0.0	0	0.0
Smith	1	0.5	2	1.1	1	0.5	2	1.0	5	2.5	6	3.0	3	1.5	4	1.9
Somervell	0	0.0	0	0.0	0	0.0	0	0.0	0	0.0	0	0.0	0	0.0	0	0.0
Starr	0	0.0	0	0.0	0	0.0	0	0.0	0	0.0	0	0.0	0	0.0	0	0.0
Stephens	0	0.0	0	0.0	0	0.0	0	0.0	1	10.4	0	0.0	0	0.0	0	0.0
Sterling	0	0.0	0	0.0	0	0.0	0	0.0	0	0.0	0	0.0	0	0.0	0	0.0
Stonewall	0	0.0	0	0.0	0	0.0	0	0.0	0	0.0	0	0.0	0	0.0	0	0.0
Sutton	0	0.0	0	0.0	0	0.0	0	0.0	0	0.0	0	0.0	0	0.0	0	0.0
Swisher	0	0.0	0	0.0	0	0.0	0	0.0	0	0.0	0	0.0	0	0.0	0	0.0
Tarrant	66	4.2	103	6.4	84	5.0	85	5.0	103	5.9	184	10.3	151	8.3	124	6.6
Taylor	14	10.9	1	0.8	0	0.0	2	1.6	0	0.0	1	0.8	4	3.0	7	5.3
Terrell	0	0.0	0	0.0	0	0.0	0	0.0	0	0.0	0	0.0	0	0.0	0	0.0
Terry	0	0.0	0	0.0	0	0.0	0	0.0	1	8.2	0	0.0	1	8.7	0	0.0
Throckmorton	0	0.0	0	0.0	0	0.0	0	0.0	0	0.0	0	0.0	0	0.0	0	0.0
Titus	0	0.0	0	0.0	0	0.0	2	6.6	1	3.3	0	0.0	1	3.1	0	0.0
Tom Green	0	0.0	0	0.0	0	0.0	2	1.9	0	0.0	0	0.0	0	0.0	2	1.9
Travis	56	6.4	37	4.1	82	8.8	67	7.1	91	9.2	86	8.8	83	8.4	99	9.8
Trinity	1	7.0	0	0.0	0	0.0	1	7.0	0	0.0	2	13.3	0	0.0	0	0.0
Tyler	0	0.0	0	0.0	0	0.0	0	0.0	0	0.0	1	4.5	0	0.0	2	9.0
Upshur	0	0.0	0	0.0	0	0.0	1	2.7	0	0.0	0	0.0	1	2.6	0	0.0
Upton	0	0.0	0	0.0	0	0.0	0	0.0	0	0.0	0	0.0	0	0.0	0	0.0
Uvalde	1	3.8	0	0.0	0	0.0	0	0.0	0	0.0	0	0.0	0	0.0	0	0.0
Val Verde	0	0.0	2	4.2	1	2.1	2	4.2	0	0.0	0	0.0	0	0.0	0	0.0
Van Zandt	0	0.0	0	0.0	1	1.9	0	0.0	0	0.0	1	1.9	0	0.0	1	1.8
Victoria	2	2.3	0	0.0	2	2.3	12	13.9	11	12.7	2	2.3	3	3.4	1	1.1
Walker	0	0.0	1	1.6	1	1.6	0	0.0	2	3.1	3	4.6	9	13.8	7	10.8
Waller	0	0.0	0	0.0	1	2.6	0	0.0	2	5.2	3	7.3	2	4.7	8	18.5
Ward	0	0.0	1	9.6	0	0.0	0	0.0	0	0.0	0	0.0	0	0.0	0	0.0
Washington	1	3.2	0	0.0	1	3.1	1	3.1	0	0.0	1	3.0	0	0.0	0	0.0
Webb	1	0.5	0	0.0	0	0.0	0	0.0	0	0.0	0	0.0	0	0.0	0	0.0
Wharton	0	0.0	1	2.4	0	0.0	1	2.4	1	2.4	2	4.6	0	0.0	0	0.0
Wheeler	0	0.0	1	19.8	0	0.0	0	0.0	0	0.0	0	0.0	0	0.0	0	0.0
Wichita	8	6.3	3	2.3	4	3.1	1	0.8	0	0.0	0	0.0	3	2.3	4	3.1
Wilbarger	0	0.0	0	0.0	0	0.0	0	0.0	1	7.0	0	0.0	0	0.0	0	0.0
Willacy	0	0.0	1	4.8	0	0.0	0	0.0	0	0.0	0	0.0	0	0.0	0	0.0
Williamson	0	0.0	7	2.1	0	0.0	3	0.8	9	2.3	7	1.7	11	2.5	5	1.1
Wilson	1	2.7	0	0.0	0	0.0	0	0.0	0	0.0	1	2.3	0	0.0	1	2.1
Winkler	0	0.0	0	0.0	0	0.0	0	0.0	0	0.0	0	0.0	0	0.0	0	0.0
Wise	1	1.8	0	0.0	0	0.0	0	0.0	0	0.0	1	1.7	0	0.0	0	0.0
Wood	0	0.0	0	0.0	0	0.0	0	0.0	1	2.4	0	0.0	0	0.0	1	2.2
Yoakum	0	0.0	0	0.0	0	0.0	0	0.0	0	0.0	0	0.0	1	12.1	0	0.0
Young	0	0.0	1	5.6	0	0.0	0	0.0	0	0.0	0	0.0	0	0.0	1	5.3
Zapata	0	0.0	0	0.0	0	0.0	0	0.0	0	0.0	0	0.0	0	0.0	0	0.0
Zavala	0	0.0	0	0.0	0	0.0	0	0.0	0	0.0	0	0.0	0	0.0	0	0.0
Total	833	3.7	879	3.8	1,066	4.5	1,172	4.9	1,405	5.8	1,644	6.6	1,231	4.9	1,162	4.5

* Rates represent cases per 100,000 population.

Texas Primary and Secondary Syphilis Cases and Case Rates by Year of Report, 2004-2011



P&S Syphilis Cases and Rates by Sex, Race/Ethnicity and Age Group, 2004-2011

County	2004		2005		2006		2007		2008		2009		2010		2011	
	Cases	Rate*	Cases	Rate*	Cases	Rate*	Cases	Rate*	Cases	Rate*	Cases	Rate*	Cases	Rate*	Cases	Rate*
Sex																
Male	653	5.8	634	5.6	801	6.8	863	7.2	954	7.8	1,152	9.2	898	7.0	907	7.0
Female	180	1.6	245	2.1	265	2.3	309	2.6	451	3.7	492	4.0	332	2.6	255	2.0
Unknown	0		0		0		0		0		0		1		0	
Race																
White	283	2.5	225	2.0	230	2.0	270	2.4	299	2.6	285	2.5	213	1.9	256	2.2
Black	309	12.0	403	15.5	559	20.3	613	22.0	777	27.5	998	34.7	695	23.8	536	18.0
Hispanic	219	2.8	238	2.9	261	3.1	270	3.1	301	3.3	341	3.6	300	3.0	348	3.4
Other	14	1.6	13	1.5	13	1.4	16	1.6	15	1.4	11	1.0	17	1.5	16	1.3
Unknown	8		0		3		3		13		9		6		6	
Age Group																
0 - 9	0	0.0	0	0.0	0	0.0	0	0.0	1	0.0	1	0.0	0	0.0	0	0.0
10 - 14	1	0.1	2	0.1	5	0.3	3	0.2	6	0.4	3	0.2	3	0.2	1	0.1
15 - 19	47	2.7	73	4.2	95	5.2	103	5.6	140	7.5	182	10.0	137	7.6	126	7.0
20 - 24	144	8.3	190	10.8	215	11.9	238	13.1	313	17.0	430	23.1	354	18.7	327	17.0
25 - 29	130	7.9	147	8.7	212	12.0	185	10.2	256	13.6	298	15.3	241	12.1	214	10.6
30 - 34	140	8.2	118	6.9	113	6.5	153	8.7	178	10.0	199	10.7	160	8.4	148	7.5
35 - 39	121	7.4	122	7.3	127	7.3	154	8.7	147	8.1	144	7.6	103	5.4	96	4.9
40 - 44	105	6.1	92	5.3	121	7.0	125	7.3	129	7.6	126	7.2	91	5.1	93	5.0
45+	145	2.0	135	1.8	178	2.3	211	2.7	235	2.9	261	3.1	142	1.7	157	1.8
Unknown	0		0		0		0		0		0		0		0	
Total	833	3.7	879	3.8	1,066	4.5	1,172	4.9	1,405	5.8	1,644	6.6	1,231	4.9	1,162	4.5

* Rates represent cases per 100,000 population.

Primary & Secondary Syphilis Cases by Age Group, Race/Ethnicity and Sex, 2011

Age Group	Male						Female						Unk Sex	Total	Percent
	White	Black	Hisp.	Other	Unk	Total	White	Black	Hisp.	Other	Unk	Total			
0 - 9	0	0	0	0	0	0	0	0	0	0	0	0	0	0	0.0%
10 - 14	0	1	0	0	0	1	0	0	0	0	0	0	0	1	0.1%
15 - 19	3	49	19	1	0	72	5	39	10	0	0	54	0	126	10.8%
20 - 24	34	134	86	2	1	257	6	50	13	0	1	70	0	327	28.1%
25 - 29	36	67	59	6	0	168	7	32	6	0	1	46	0	214	18.4%
30 - 34	33	30	46	0	0	109	3	26	10	0	0	39	0	148	12.7%
35 - 39	17	27	30	2	0	76	4	11	5	0	0	20	0	96	8.3%
40 - 44	32	21	26	2	1	82	3	4	4	0	0	11	0	93	8.0%
45+	69	39	29	3	2	142	4	6	5	0	0	15	0	157	13.5%
Unk	0	0	0	0	0	0	0	0	0	0	0	0	0	0	0.0%
Total	224	368	295	16	4	907	32	168	53	0	2	255	0	1,162	
Percent	24.7%	40.6%	32.5%	1.8%	0.4%		12.5%	65.9%	20.8%	0.0%	0.8%				

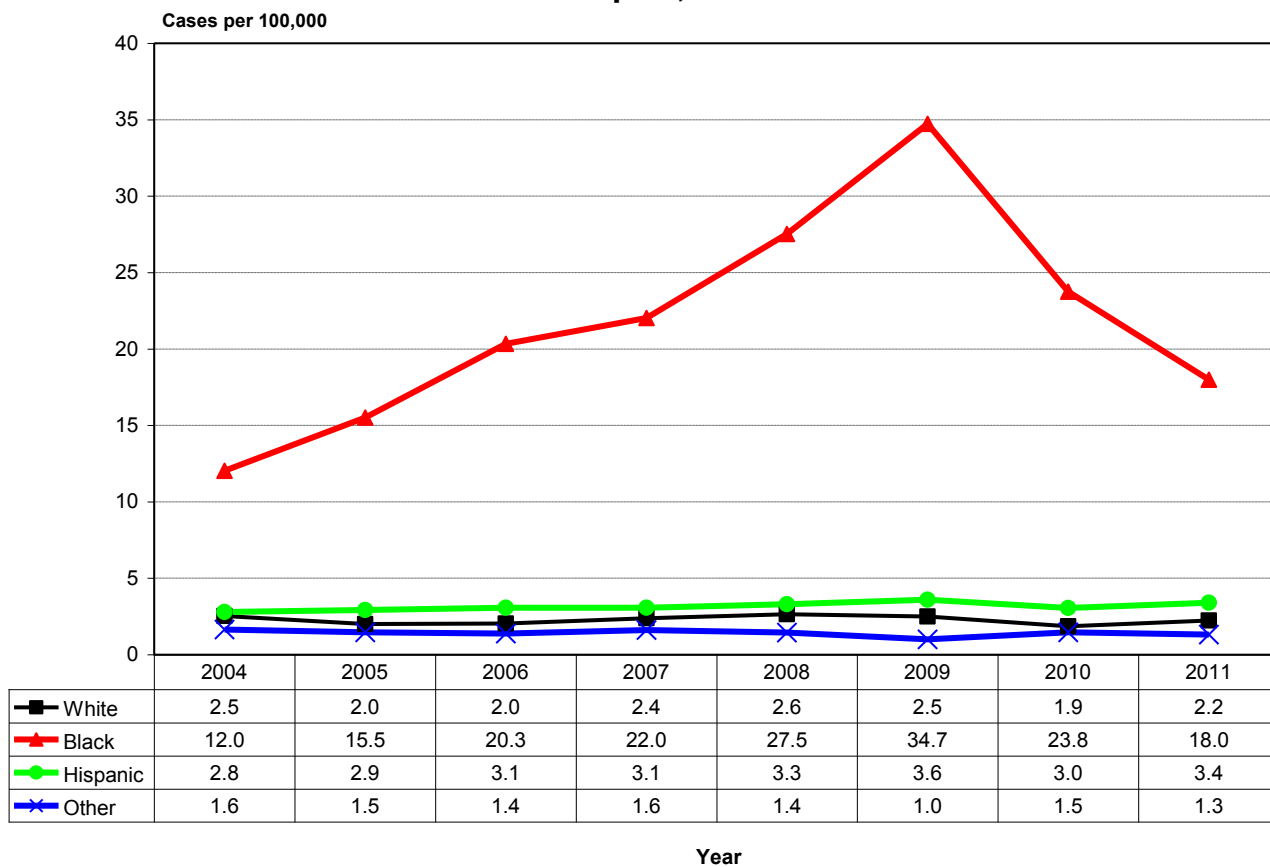
Percent Male 78.1%

Percent Female 21.9%

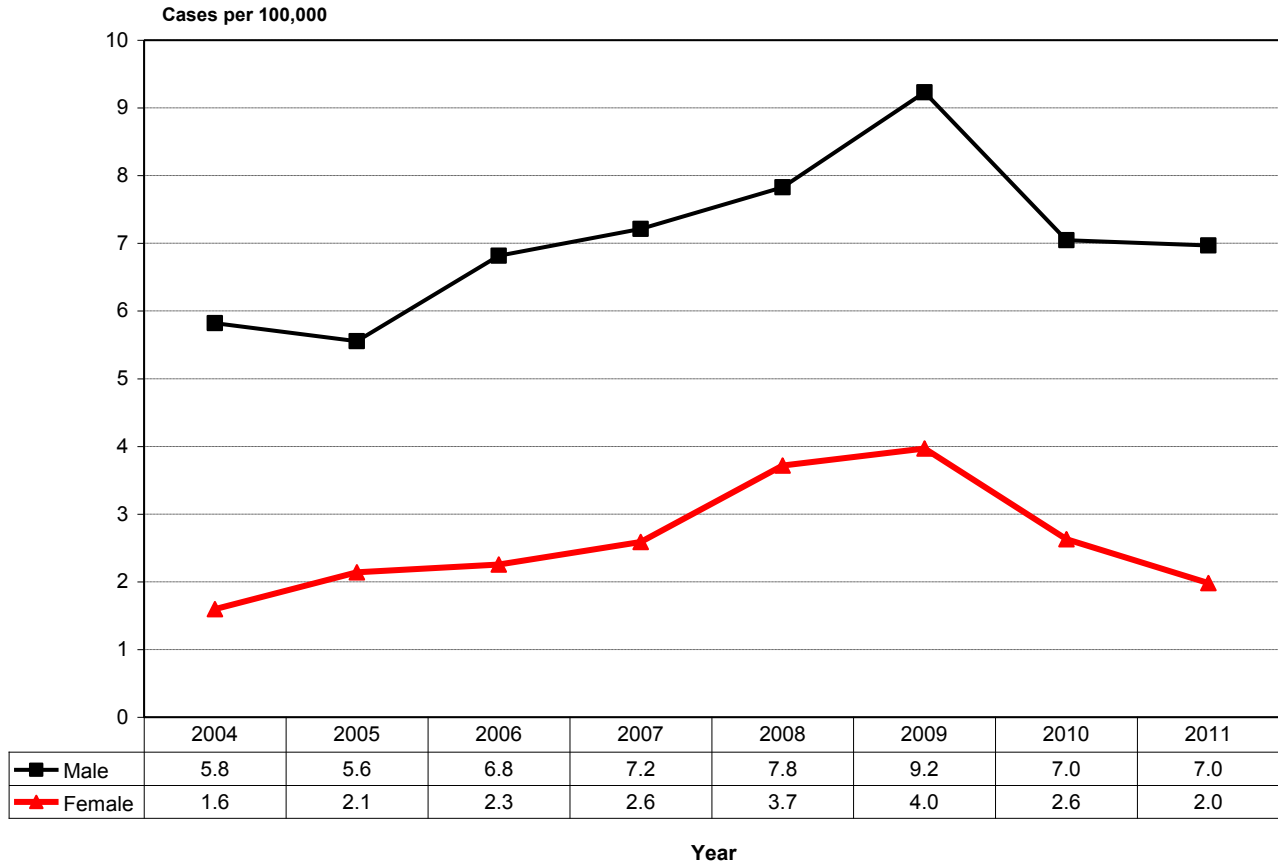
Total White	256	22.0%
Total Black	536	46.1%
Total Hispanic	348	29.9%
Total Other	16	1.4%
Total Unknown	6	0.5%

Total 1,162

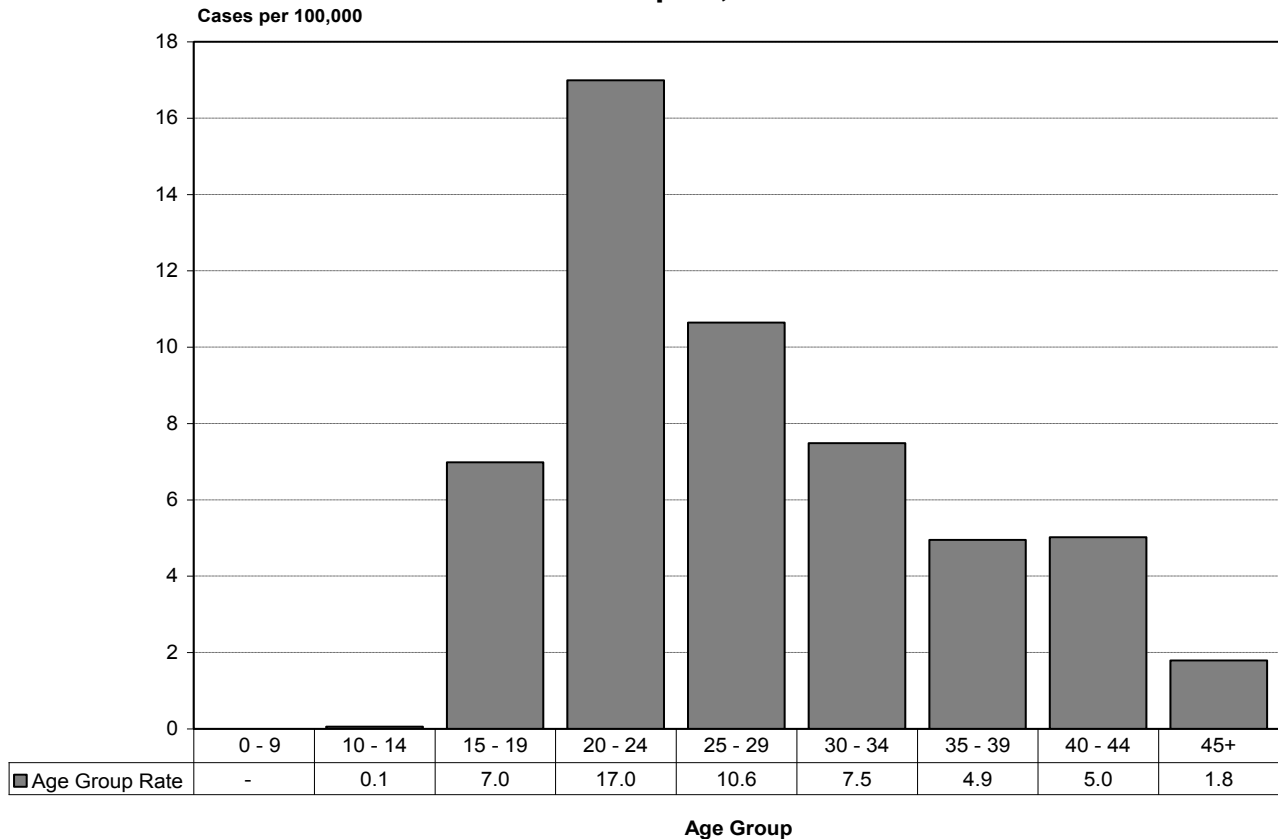
Texas Primary and Secondary Syphilis Case Rates by Race and Year of Report, 2004-2011



Texas Primary and Secondary Syphilis Case Rates by Sex and Year of Report, 2004-2011



Texas Primary and Secondary Syphilis Case Rates by Age Group and Year of Report, 2011



Total Syphilis Cases and Rates by County of Residence, 2004-2011

County	2004		2005		2006		2007		2008		2009		2010		2011	
	Cases	Rate*	Cases	Rate*	Cases	Rate*	Cases	Rate*	Cases	Rate*	Cases	Rate*	Cases	Rate*	Cases	Rate*
Anderson	22	39.3	19	33.9	7	12.5	2	3.5	5	8.9	16	27.8	17	29.4	3	5.2
Andrews	1	7.8	0	0.0	1	7.6	1	7.5	2	14.4	0	0.0	2	14.0	2	13.9
Angelina	23	28.1	64	78.0	28	34.0	30	36.3	33	39.7	16	18.9	29	34.1	18	21.0
Aransas	1	4.2	0	0.0	1	4.0	1	4.0	0	0.0	0	0.0	3	10.9	0	0.0
Archer	0	0.0	0	0.0	3	33.1	2	21.9	0	0.0	0	0.0	2	21.0	4	41.9
Armstrong	0	0.0	0	0.0	0	0.0	0	0.0	0	0.0	0	0.0	0	0.0	0	0.0
Atascosa	4	9.4	5	11.9	7	16.5	2	4.6	8	18.3	6	13.3	7	15.3	7	15.0
Austin	4	15.5	3	11.5	1	3.7	2	7.4	5	18.3	3	10.6	1	3.5	6	20.5
Bailey	0	0.0	0	0.0	1	15.4	0	0.0	0	0.0	0	0.0	1	15.8	0	0.0
Bandera	0	0.0	1	5.1	0	0.0	0	0.0	4	19.7	1	4.8	1	4.7	1	4.6
Bastrop	4	5.9	1	1.4	4	5.6	4	5.5	9	12.3	3	3.8	17	20.8	8	9.5
Baylor	0	0.0	0	0.0	0	0.0	0	0.0	0	0.0	0	0.0	0	0.0	0	0.0
Bee	5	15.1	1	3.0	2	6.0	3	9.1	2	6.0	3	8.8	5	14.7	18	52.6
Bell	15	6.0	14	5.4	17	6.3	24	8.7	28	9.9	28	9.8	48	16.5	34	11.5
Bexar	337	22.7	439	29.1	452	29.2	398	25.2	570	35.2	705	43.7	670	40.9	693	41.7
Blanco	0	0.0	0	0.0	0	0.0	0	0.0	1	10.6	0	0.0	1	9.7	2	18.9
Borden	0	0.0	0	0.0	0	0.0	0	0.0	0	0.0	0	0.0	0	0.0	0	0.0
Bosque	0	0.0	0	0.0	0	0.0	0	0.0	1	5.5	0	0.0	0	0.0	0	0.0
Bowie	5	5.5	9	9.8	5	5.4	15	16.1	67	71.8	121	130.6	124	133.4	83	89.0
Brazoria	10	3.7	16	5.8	20	7.0	40	13.6	33	11.0	31	10.0	23	7.2	35	10.7
Brazos	14	8.7	23	14.3	31	18.5	28	16.5	36	20.7	33	19.0	31	17.7	30	16.9
Brewster	0	0.0	0	0.0	0	0.0	0	0.0	0	0.0	0	0.0	0	0.0	1	10.5
Briscoe	0	0.0	0	0.0	0	0.0	0	0.0	0	0.0	0	0.0	0	0.0	0	0.0
Brooks	0	0.0	1	13.1	0	0.0	0	0.0	0	0.0	0	0.0	0	0.0	0	0.0
Brown	0	0.0	0	0.0	2	5.2	1	2.6	0	0.0	3	7.6	1	2.5	0	0.0
Burleson	2	11.4	4	22.4	2	11.0	1	5.5	2	11.0	0	0.0	0	0.0	1	5.3
Burnet	4	10.5	2	5.1	2	4.9	2	4.7	3	7.0	2	4.3	3	6.3	4	8.1
Caldwell	2	5.6	1	2.8	0	0.0	3	8.4	3	8.2	2	5.3	3	7.7	4	10.1
Calhoun	2	9.7	0	0.0	2	9.6	7	33.5	1	4.8	0	0.0	0	0.0	1	4.3
Callahan	2	15.0	0	0.0	0	0.0	0	0.0	0	0.0	0	0.0	0	0.0	0	0.0
Cameron	56	15.1	34	9.0	41	10.5	39	10.0	34	8.6	36	8.8	60	14.4	40	9.4
Camp	5	40.1	2	15.8	0	0.0	2	15.6	5	38.9	2	15.1	0	0.0	2	14.7
Carson	0	0.0	0	0.0	0	0.0	1	15.5	0	0.0	0	0.0	1	14.8	0	0.0
Cass	1	3.3	3	9.9	0	0.0	1	3.3	6	19.8	8	26.1	14	45.7	21	68.6
Castro	0	0.0	0	0.0	0	0.0	0	0.0	0	0.0	1	13.4	0	0.0	0	0.0
Chambers	1	3.4	1	3.1	2	6.2	0	0.0	0	0.0	5	14.4	3	8.4	0	0.0
Cherokee	12	24.9	14	28.9	3	6.2	10	20.5	7	14.2	13	26.2	18	36.0	8	15.9
Childress	0	0.0	0	0.0	0	0.0	0	0.0	0	0.0	0	0.0	0	0.0	0	0.0
Clay	0	0.0	0	0.0	0	0.0	1	9.0	0	0.0	0	0.0	1	8.9	0	0.0
Cochran	0	0.0	0	0.0	1	27.9	0	0.0	1	28.6	0	0.0	0	0.0	0	0.0
Coke	0	0.0	0	0.0	0	0.0	2	52.4	0	0.0	0	0.0	0	0.0	0	0.0
Coleman	1	11.0	0	0.0	0	0.0	1	11.5	0	0.0	0	0.0	1	11.2	0	0.0
Collin	29	4.6	33	5.0	38	5.5	43	5.9	42	5.5	76	9.5	63	7.5	65	7.4
Collingsworth	0	0.0	0	0.0	0	0.0	0	0.0	1	33.1	0	0.0	0	0.0	0	0.0
Colorado	2	9.4	2	9.5	1	4.6	2	9.2	3	13.8	8	36.2	8	35.9	4	17.8
Comal	4	4.4	8	8.4	4	3.9	5	4.7	5	4.5	7	6.0	15	12.4	9	7.1
Comanche	0	0.0	0	0.0	0	0.0	1	7.1	0	0.0	2	14.1	0	0.0	0	0.0
Concho	6	154.0	8	207.9	5	131.5	5	133.5	6	160.9	1	25.8	2	51.9	1	26.2
Cooke	0	0.0	0	0.0	2	5.0	0	0.0	1	2.5	2	4.9	0	0.0	3	7.3
Coryell	6	8.1	8	10.6	4	5.3	3	3.9	9	11.8	6	7.4	4	4.9	7	8.6
Cottle	0	0.0	0	0.0	0	0.0	0	0.0	0	0.0	0	0.0	0	0.0	0	0.0
Crane	0	0.0	0	0.0	2	51.9	0	0.0	0	0.0	0	0.0	0	0.0	0	0.0
Crockett	0	0.0	1	24.8	0	0.0	0	0.0	0	0.0	1	22.0	0	0.0	0	0.0
Crosby	0	0.0	0	0.0	0	0.0	0	0.0	0	0.0	2	30.3	0	0.0	0	0.0
Culberson	0	0.0	0	0.0	0	0.0	0	0.0	0	0.0	0	0.0	0	0.0	0	0.0
Dallam	0	0.0	0	0.0	0	0.0	0	0.0	0	0.0	0	0.0	0	0.0	0	0.0
Dallas	950	41.5	1,064	46.3	1,219	52.1	1,224	51.8	1,306	54.7	1,513	62.7	1,410	57.9	1,309	53.2
Dawson	0	0.0	1	7.0	1	7.0	2	14.3	9	64.6	2	13.5	4	27.0	0	0.0
Deaf Smith	1	5.4	0	0.0	0	0.0	1	5.4	0	0.0	0	0.0	3	14.6	0	0.0
Delta	0	0.0	0	0.0	0	0.0	0	0.0	0	0.0	0	0.0	0	0.0	0	0.0
Denton	28	5.2	19	3.4	26	4.4	22	3.6	38	6.0	50	7.4	36	5.1	31	4.2
DeWitt	1	4.9	3	14.6	1	4.9	1	4.9	6	29.8	6	29.2	0	0.0	1	4.9
Dickens	0	0.0	0	0.0	0	0.0	0	0.0	0	0.0	0	0.0	0	0.0	0	0.0
Dimmit	1	9.8	2	19.8	1	10.0	0	0.0	0	0.0	0	0.0	0	0.0	0	0.0

* Rates represent cases per 100,000 population.

Total Syphilis Cases and Rates by County of Residence, 2004-2011

County	2004		2005		2006		2007		2008		2009		2010		2011	
	Cases	Rate*	Cases	Rate*	Cases	Rate*	Cases	Rate*	Cases	Rate*	Cases	Rate*	Cases	Rate*	Cases	Rate*
Donley	0	0.0	0	0.0	0	0.0	0	0.0	1	25.3	0	0.0	0	0.0	0	0.0
Duval	0	0.0	0	0.0	2	15.9	0	0.0	0	0.0	1	8.2	1	8.3	1	8.4
Eastland	0	0.0	0	0.0	0	0.0	0	0.0	0	0.0	1	5.3	1	5.3	0	0.0
Ector	3	2.4	34	27.3	26	20.4	18	14.0	19	14.5	14	10.6	21	15.8	19	14.2
Edwards	0	0.0	0	0.0	0	0.0	0	0.0	0	0.0	0	0.0	0	0.0	0	0.0
Ellis	23	17.8	39	29.3	32	23.0	21	14.7	12	8.1	23	15.0	19	11.9	30	18.2
El Paso	125	17.5	97	13.4	99	13.3	94	12.6	101	13.5	125	16.4	105	13.6	109	13.9
Erath	0	0.0	0	0.0	0	0.0	0	0.0	1	2.8	0	0.0	0	0.0	2	5.0
Falls	5	27.3	2	11.0	22	122.0	2	11.2	2	11.3	5	26.7	1	5.3	3	16.0
Fannin	3	9.0	4	11.8	1	2.9	1	2.9	1	2.9	4	11.6	3	8.6	0	0.0
Fayette	0	0.0	0	0.0	1	4.2	1	4.2	0	0.0	2	8.1	1	4.0	0	0.0
Fisher	0	0.0	0	0.0	0	0.0	0	0.0	0	0.0	0	0.0	0	0.0	0	0.0
Floyd	0	0.0	0	0.0	0	0.0	0	0.0	0	0.0	1	14.3	1	14.5	1	14.6
Foard	0	0.0	0	0.0	0	0.0	0	0.0	0	0.0	0	0.0	0	0.0	0	0.0
Fort Bend	53	12.2	38	8.3	58	11.9	83	16.2	106	19.9	111	20.1	91	15.8	84	13.9
Franklin	0	0.0	0	0.0	2	19.5	2	18.9	3	28.4	0	0.0	2	18.3	0	0.0
Freestone	3	15.9	0	0.0	1	5.2	0	0.0	2	10.1	8	39.7	1	4.9	1	4.8
Frio	1	6.2	3	18.3	1	6.1	0	0.0	0	0.0	4	22.5	5	27.8	2	11.1
Gaines	0	0.0	0	0.0	1	6.6	1	6.6	0	0.0	0	0.0	1	6.1	0	0.0
Galveston	33	12.2	31	11.3	62	22.0	66	23.1	96	33.3	111	38.4	89	30.3	66	22.1
Garza	1	19.9	3	60.7	2	39.4	0	0.0	2	39.4	3	57.7	3	57.3	10	189.4
Gillespie	3	13.2	0	0.0	0	0.0	0	0.0	1	4.1	1	4.0	0	0.0	1	3.8
Glasscock	0	0.0	0	0.0	0	0.0	0	0.0	0	0.0	0	0.0	0	0.0	1	65.2
Goliad	1	14.1	0	0.0	0	0.0	1	13.8	0	0.0	2	26.2	2	25.9	1	12.9
Gonzales	1	5.1	1	5.1	0	0.0	1	5.2	3	15.6	1	5.0	0	0.0	0	0.0
Gray	5	22.6	0	0.0	3	13.4	3	13.3	1	4.4	0	0.0	1	4.4	4	17.5
Grayson	6	5.2	10	8.5	13	11.0	8	6.7	7	5.9	7	5.8	9	7.5	8	6.6
Gregg	23	20.1	26	22.6	10	8.5	13	11.0	58	49.1	131	107.7	85	69.1	59	47.4
Grimes	4	16.2	0	0.0	0	0.0	1	4.0	3	11.8	2	7.6	4	15.1	1	3.7
Guadalupe	12	11.7	3	2.9	5	4.5	4	3.4	4	3.4	8	6.4	20	15.5	8	6.0
Hale	4	11.0	1	2.8	2	5.6	2	5.6	4	11.3	3	8.1	1	2.7	4	10.8
Hall	0	0.0	0	0.0	0	0.0	0	0.0	0	0.0	0	0.0	0	0.0	0	0.0
Hamilton	0	0.0	1	12.0	0	0.0	0	0.0	0	0.0	0	0.0	0	0.0	0	0.0
Hansford	0	0.0	0	0.0	0	0.0	0	0.0	0	0.0	0	0.0	0	0.0	0	0.0
Hardeman	0	0.0	0	0.0	0	0.0	0	0.0	0	0.0	0	0.0	0	0.0	0	0.0
Hardin	0	0.0	0	0.0	1	2.0	3	5.9	18	34.8	11	21.2	6	11.5	5	9.5
Harris	1,147	31.5	1,060	28.7	1,378	36.0	1,817	46.7	1,792	45.2	1,713	42.7	1,612	39.4	1,576	37.7
Harrison	5	8.0	8	12.6	7	11.0	6	9.4	9	14.0	8	11.9	18	26.6	15	22.0
Hartley	0	0.0	0	0.0	0	0.0	0	0.0	0	0.0	0	0.0	0	0.0	0	0.0
Haskell	0	0.0	0	0.0	0	0.0	0	0.0	0	0.0	1	16.9	0	0.0	1	17.0
Hays	3	2.5	5	4.0	6	4.5	7	5.0	12	8.1	11	7.0	19	11.6	23	13.4
Hemphill	0	0.0	0	0.0	0	0.0	0	0.0	0	0.0	0	0.0	0	0.0	0	0.0
Henderson	6	7.7	5	6.4	10	12.6	3	3.8	5	6.3	3	3.7	4	4.9	1	1.2
Hidalgo	66	10.0	85	12.5	126	17.8	112	15.6	115	15.9	94	12.2	102	12.9	123	15.0
Hill	2	5.9	5	14.6	2	5.7	2	5.7	3	8.4	2	5.5	4	10.8	4	10.7
Hockley	0	0.0	0	0.0	0	0.0	0	0.0	2	9.0	2	8.4	2	8.4	2	8.4
Hood	4	8.7	1	2.1	0	0.0	0	0.0	2	3.9	4	7.5	3	5.5	3	5.3
Hopkins	0	0.0	2	6.0	2	5.9	1	2.9	1	2.9	4	11.6	2	5.8	2	5.7
Houston	3	12.8	3	12.9	1	4.2	2	8.5	6	25.3	1	4.1	1	4.1	2	8.1
Howard	3	9.0	23	69.5	13	39.5	19	58.1	10	30.4	0	0.0	4	11.9	1	3.0
Hudspeth	0	0.0	0	0.0	0	0.0	0	0.0	6	176.4	0	0.0	0	0.0	1	25.9
Hunt	2	2.5	3	3.6	4	4.8	8	9.6	2	2.4	9	10.2	3	3.3	4	4.4
Hutchinson	0	0.0	1	4.5	0	0.0	1	4.4	1	4.4	0	0.0	1	4.2	0	0.0
Irion	0	0.0	0	0.0	0	0.0	0	0.0	0	0.0	0	0.0	0	0.0	0	0.0
Jack	4	45.4	3	34.3	3	33.9	0	0.0	0	0.0	0	0.0	0	0.0	0	0.0
Jackson	1	6.9	0	0.0	2	13.7	19	129.0	3	20.2	0	0.0	1	6.5	0	0.0
Jasper	2	5.6	2	5.6	1	2.9	3	8.5	11	31.1	20	55.7	14	39.0	10	27.9
Jeff Davis	0	0.0	0	0.0	0	0.0	0	0.0	0	0.0	0	0.0	0	0.0	0	0.0
Jefferson	23	9.2	20	8.1	24	9.8	129	52.4	308	125.1	365	149.9	157	64.7	148	61.1
Jim Hogg	0	0.0	0	0.0	0	0.0	0	0.0	0	0.0	0	0.0	0	0.0	0	0.0
Jim Wells	1	2.5	0	0.0	3	7.3	0	0.0	0	0.0	0	0.0	2	4.7	1	2.3
Johnson	4	2.8	9	6.2	3	2.0	4	2.6	5	3.2	6	3.7	7	4.1	7	4.0
Jones	18	87.4	6	29.1	2	9.8	4	19.7	2	9.9	2	9.6	2	9.6	3	14.4
Karnes	0	0.0	1	6.5	1	6.5	3	19.4	0	0.0	0	0.0	2	11.9	1	5.9

* Rates represent cases per 100,000 population.

Total Syphilis Cases and Rates by County of Residence, 2004-2011

County	2004		2005		2006		2007		2008		2009		2010		2011	
	Cases	Rate*	Cases	Rate*	Cases	Rate*	Cases	Rate*	Cases	Rate*	Cases	Rate*	Cases	Rate*	Cases	Rate*
Kaufman	17	20.0	30	33.6	47	50.1	36	37.3	17	17.0	12	11.6	12	11.2	8	7.1
Kendall	1	3.6	2	6.9	2	6.5	4	12.6	1	3.0	5	14.7	2	5.7	1	2.7
Kenedy	0	0.0	0	0.0	0	0.0	0	0.0	0	0.0	0	0.0	0	0.0	0	0.0
Kent	0	0.0	0	0.0	0	0.0	0	0.0	0	0.0	0	0.0	0	0.0	0	0.0
Kerr	0	0.0	2	4.3	1	2.1	5	10.5	1	2.1	5	10.8	1	2.1	2	4.2
Kimble	0	0.0	0	0.0	0	0.0	0	0.0	0	0.0	0	0.0	0	0.0	0	0.0
King	0	0.0	0	0.0	0	0.0	0	0.0	0	0.0	0	0.0	0	0.0	0	0.0
Kinney	0	0.0	0	0.0	0	0.0	0	0.0	0	0.0	0	0.0	0	0.0	0	0.0
Kleberg	1	3.1	0	0.0	2	6.6	0	0.0	2	6.5	3	9.3	1	3.1	3	9.4
Knox	0	0.0	0	0.0	0	0.0	0	0.0	0	0.0	0	0.0	0	0.0	0	0.0
Lamar	1	2.0	6	12.1	1	2.0	0	0.0	0	0.0	2	4.0	4	7.9	4	7.9
Lamb	0	0.0	0	0.0	1	6.8	0	0.0	0	0.0	0	0.0	0	0.0	1	6.4
Lampasas	1	4.9	0	0.0	0	0.0	1	4.8	0	0.0	0	0.0	4	17.7	1	4.3
La Salle	0	0.0	1	16.7	2	33.8	1	16.9	2	33.5	1	16.6	1	16.6	0	0.0
Lavaca	1	5.1	0	0.0	0	0.0	1	5.1	2	10.3	3	15.4	2	10.2	2	10.2
Lee	0	0.0	2	12.1	0	0.0	1	5.8	1	5.8	1	5.6	1	5.5	0	0.0
Leon	2	12.3	2	12.3	2	12.3	2	12.4	1	6.0	1	6.0	6	35.4	0	0.0
Liberty	18	23.7	21	27.4	20	25.9	23	29.7	17	21.9	7	8.7	6	7.3	8	9.6
Limestone	7	31.1	0	0.0	4	17.9	2	9.0	8	35.8	18	77.4	13	55.6	4	17.0
Lipscomb	0	0.0	0	0.0	0	0.0	0	0.0	0	0.0	0	0.0	0	0.0	0	0.0
Live Oak	0	0.0	0	0.0	0	0.0	0	0.0	0	0.0	0	0.0	0	0.0	1	8.1
Llano	1	5.4	0	0.0	1	5.3	5	26.1	2	10.4	0	0.0	1	5.2	0	0.0
Loving	0	0.0	0	0.0	0	0.0	0	0.0	0	0.0	0	0.0	0	0.0	0	0.0
Lubbock	14	5.6	6	2.4	15	5.9	17	6.5	38	14.4	53	19.9	47	17.5	45	16.7
Lynn	0	0.0	0	0.0	0	0.0	0	0.0	0	0.0	2	33.4	0	0.0	0	0.0
McCulloch	0	0.0	0	0.0	0	0.0	0	0.0	0	0.0	0	0.0	0	0.0	0	0.0
McLennan	144	65.5	117	52.6	118	52.6	114	50.5	50	21.9	36	15.6	25	10.7	35	14.8
McMullen	0	0.0	0	0.0	0	0.0	0	0.0	0	0.0	0	0.0	0	0.0	0	0.0
Madison	2	15.0	1	7.4	1	7.4	0	0.0	1	7.3	1	7.0	3	20.7	5	34.1
Marion	2	18.2	0	0.0	1	9.2	3	28.0	3	28.1	0	0.0	3	27.2	1	9.1
Martin	0	0.0	0	0.0	0	0.0	0	0.0	1	20.2	0	0.0	0	0.0	0	0.0
Mason	1	25.6	0	0.0	0	0.0	1	27.1	0	0.0	0	0.0	0	0.0	0	0.0
Matagorda	11	29.1	5	13.4	3	8.1	7	19.0	5	13.4	6	15.5	1	2.6	2	5.1
Maverick	10	19.7	2	3.9	10	19.2	3	5.7	10	19.0	8	14.7	7	12.7	10	17.9
Medina	4	9.5	7	16.4	1	2.3	4	9.1	2	4.5	4	8.9	12	26.3	6	13.0
Menard	0	0.0	0	0.0	0	0.0	0	0.0	0	0.0	0	0.0	0	0.0	0	0.0
Midland	4	3.3	5	4.2	4	3.2	7	5.6	8	6.2	5	3.9	14	10.8	11	8.4
Milam	1	3.9	0	0.0	1	3.9	0	0.0	4	15.6	1	3.8	1	3.8	0	0.0
Mills	0	0.0	0	0.0	0	0.0	0	0.0	0	0.0	1	18.3	0	0.0	0	0.0
Mitchell	0	0.0	0	0.0	0	0.0	2	21.0	0	0.0	1	10.2	0	0.0	0	0.0
Montague	0	0.0	0	0.0	0	0.0	0	0.0	0	0.0	0	0.0	1	4.9	0	0.0
Montgomery	20	5.6	25	6.7	22	5.5	36	8.6	36	8.4	56	12.3	37	7.8	36	7.2
Moore	0	0.0	2	10.0	0	0.0	2	10.1	0	0.0	1	4.8	0	0.0	0	0.0
Morris	1	7.7	0	0.0	0	0.0	5	38.0	9	68.9	3	22.2	5	36.9	1	7.4
Motley	0	0.0	0	0.0	0	0.0	0	0.0	0	0.0	0	0.0	0	0.0	0	0.0
Nacogdoches	7	11.4	11	17.9	29	46.1	42	67.0	18	28.7	17	26.7	19	29.6	4	6.2
Navarro	16	33.7	1	2.1	7	14.4	11	22.4	7	14.2	7	13.8	15	29.1	10	19.1
Newton	0	0.0	0	0.0	0	0.0	1	7.0	1	7.0	6	40.2	5	33.6	7	47.2
Nolan	0	0.0	1	6.6	0	0.0	2	13.6	0	0.0	1	6.9	1	6.9	0	0.0
Nueces	14	4.4	20	6.3	25	7.8	25	7.8	31	9.6	33	10.2	53	16.4	57	17.5
Ochiltree	0	0.0	0	0.0	1	10.8	0	0.0	0	0.0	0	0.0	0	0.0	0	0.0
Oldham	0	0.0	0	0.0	0	0.0	0	0.0	0	0.0	1	43.1	0	0.0	0	0.0
Orange	1	1.2	3	3.6	3	3.6	9	10.7	31	36.9	59	69.4	25	29.4	25	29.5
Palo Pinto	3	11.0	0	0.0	1	3.6	1	3.6	1	3.6	0	0.0	0	0.0	0	0.0
Panola	2	8.8	4	17.4	1	4.3	5	21.4	9	38.7	5	20.8	7	29.0	2	8.3
Parker	5	4.9	2	1.9	2	1.9	3	2.8	5	4.5	2	1.7	5	4.2	5	4.1
Parmer	1	10.2	0	0.0	1	10.2	0	0.0	2	20.7	0	0.0	0	0.0	0	0.0
Pecos	3	18.5	0	0.0	0	0.0	1	6.1	0	0.0	3	16.9	0	0.0	2	11.2
Polk	6	13.3	8	17.5	13	28.0	5	10.8	2	4.3	4	8.2	4	8.0	7	13.8
Potter	20	16.9	14	11.7	14	11.5	16	13.2	10	8.2	12	9.6	5	4.0	5	3.9
Presidio	0	0.0	0	0.0	0	0.0	0	0.0	0	0.0	0	0.0	0	0.0	0	0.0
Rains	1	9.7	0	0.0	0	0.0	0	0.0	0	0.0	0	0.0	0	0.0	0	0.0
Randall	2	1.8	0	0.0	6	5.4	4	3.5	2	1.7	1	0.8	2	1.7	3	2.5
Reagan	0	0.0	0	0.0	0	0.0	0	0.0	0	0.0	0	0.0	0	0.0	0	0.0

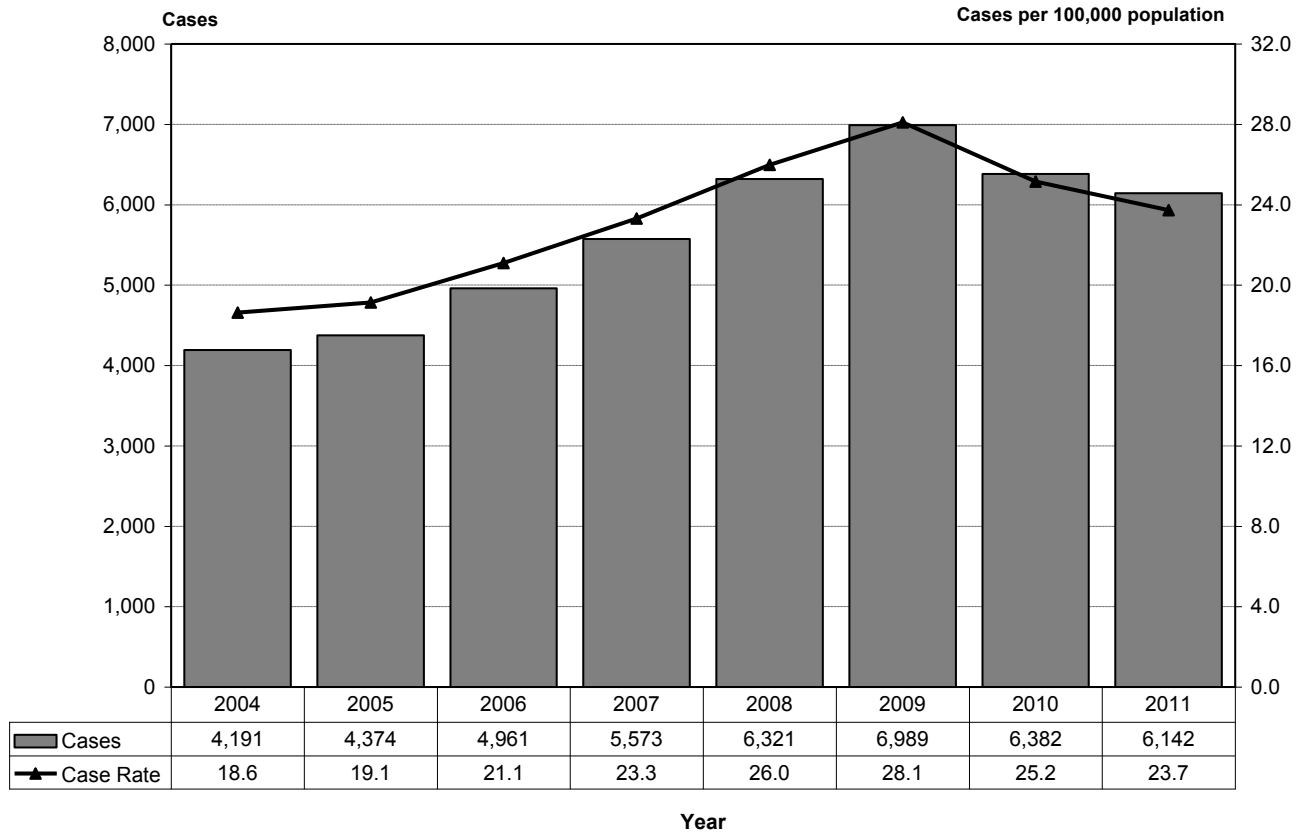
* Rates represent cases per 100,000 population.

Total Syphilis Cases and Rates by County of Residence, 2004-2011

County	2004		2005		2006		2007		2008		2009		2010		2011	
	Cases	Rate*	Cases	Rate*	Cases	Rate*	Cases	Rate*	Cases	Rate*	Cases	Rate*	Cases	Rate*	Cases	Rate*
Real	0	0.0	2	61.4	1	30.3	0	0.0	0	0.0	0	0.0	0	0.0	0	0.0
Red River	1	7.1	2	14.3	0	0.0	0	0.0	0	0.0	2	13.9	2	13.9	1	6.9
Reeves	5	42.2	17	146.2	24	206.8	14	121.8	18	158.2	1	8.9	4	36.1	4	36.8
Refugio	1	13.1	0	0.0	0	0.0	1	13.5	0	0.0	0	0.0	0	0.0	0	0.0
Roberts	0	0.0	0	0.0	0	0.0	1	117.9	0	0.0	0	0.0	0	0.0	0	0.0
Robertson	2	12.4	3	18.5	3	18.6	5	31.2	9	56.5	7	41.7	6	35.5	3	17.7
Rockwall	2	3.5	1	1.6	3	4.3	3	4.1	1	1.3	4	5.0	2	2.3	5	5.5
Runnels	0	0.0	1	8.9	0	0.0	0	0.0	1	9.3	0	0.0	0	0.0	0	0.0
Rusk	4	8.3	9	18.9	8	16.6	1	2.1	8	16.5	13	26.1	4	8.0	9	17.9
Sabine	0	0.0	2	19.2	2	19.1	0	0.0	3	28.8	0	0.0	0	0.0	1	9.2
San Augustine	0	0.0	0	0.0	0	0.0	7	76.3	4	44.3	3	31.4	0	0.0	2	20.8
San Jacinto	1	4.3	4	16.3	3	12.1	3	11.7	4	15.6	1	3.6	0	0.0	2	7.0
San Patricio	1	1.4	1	1.4	2	2.9	2	2.9	7	10.1	5	7.1	1	1.4	2	2.8
San Saba	0	0.0	0	0.0	0	0.0	0	0.0	0	0.0	0	0.0	0	0.0	0	0.0
Schleicher	0	0.0	0	0.0	0	0.0	0	0.0	0	0.0	0	0.0	0	0.0	0	0.0
Scurry	3	18.7	0	0.0	1	6.3	1	6.2	2	12.3	0	0.0	0	0.0	0	0.0
Shackelford	0	0.0	2	61.4	0	0.0	0	0.0	0	0.0	0	0.0	0	0.0	0	0.0
Shelby	1	3.9	3	11.8	1	3.9	19	73.9	9	34.3	6	22.7	6	22.5	3	11.2
Sherman	0	0.0	1	29.8	0	0.0	0	0.0	0	0.0	0	0.0	0	0.0	0	0.0
Smith	23	12.3	30	15.8	26	13.3	17	8.6	34	17.0	52	25.6	49	23.7	44	20.9
Somervell	0	0.0	0	0.0	1	12.5	0	0.0	0	0.0	0	0.0	0	0.0	0	0.0
Starr	4	6.7	4	6.5	0	0.0	6	9.6	4	6.4	4	6.1	2	3.0	3	4.4
Stephens	0	0.0	1	10.4	0	0.0	0	0.0	3	31.1	0	0.0	0	0.0	0	0.0
Sterling	0	0.0	0	0.0	0	0.0	0	0.0	0	0.0	0	0.0	0	0.0	0	0.0
Stonewall	0	0.0	0	0.0	0	0.0	0	0.0	0	0.0	0	0.0	0	0.0	0	0.0
Sutton	0	0.0	0	0.0	0	0.0	0	0.0	0	0.0	0	0.0	0	0.0	0	0.0
Swisher	0	0.0	0	0.0	0	0.0	1	12.4	0	0.0	0	0.0	0	0.0	0	0.0
Tarrant	291	18.3	325	20.0	300	18.0	305	17.9	348	20.0	453	25.4	399	21.9	362	19.3
Taylor	46	35.9	10	7.8	3	2.3	4	3.1	11	8.6	4	3.1	14	10.7	13	9.9
Terrell	0	0.0	0	0.0	0	0.0	0	0.0	0	0.0	0	0.0	0	0.0	0	0.0
Terry	1	8.1	0	0.0	0	0.0	0	0.0	2	16.4	0	0.0	3	26.0	1	8.8
Throckmorton	0	0.0	0	0.0	0	0.0	0	0.0	0	0.0	0	0.0	0	0.0	0	0.0
Titus	3	10.1	2	6.7	2	6.6	10	32.9	14	46.1	3	9.5	3	9.4	5	15.4
Tom Green	3	2.9	2	1.9	8	7.8	10	9.7	7	6.7	8	7.7	7	6.7	14	13.5
Travis	178	20.4	169	18.8	194	20.9	202	21.3	290	29.3	317	32.5	284	28.6	351	34.7
Trinity	7	48.9	12	83.6	13	91.2	3	21.0	2	14.0	6	39.9	0	0.0	3	19.6
Tyler	2	9.4	2	9.4	3	14.3	2	9.5	4	18.9	6	27.3	2	9.0	4	18.0
Upshur	2	5.5	1	2.7	0	0.0	1	2.7	6	15.9	5	13.2	6	15.7	5	13.0
Upton	0	0.0	1	32.4	1	31.6	1	31.5	0	0.0	1	31.5	0	0.0	0	0.0
Uvalde	1	3.8	1	3.7	1	3.9	1	3.9	1	3.9	1	3.6	2	7.2	0	0.0
Val Verde	3	6.3	10	21.2	6	12.7	4	8.4	10	20.9	5	10.1	5	10.0	2	4.0
Van Zandt	4	7.8	2	3.9	9	17.4	2	3.8	4	7.6	2	3.8	2	3.7	2	3.7
Victoria	10	11.7	8	9.4	11	12.7	35	40.4	40	46.1	51	57.5	25	28.0	21	23.4
Walker	9	14.2	21	33.0	25	39.0	17	26.5	11	17.0	9	13.8	26	39.9	17	26.1
Waller	3	8.2	2	5.5	7	18.2	8	20.6	9	23.2	8	19.3	10	23.6	27	62.4
Ward	0	0.0	2	19.1	2	19.3	1	9.8	1	9.5	0	0.0	0	0.0	0	0.0
Washington	2	6.3	4	12.6	3	9.3	3	9.2	0	0.0	3	9.1	2	6.0	1	3.0
Webb	12	5.4	35	15.3	31	13.2	39	16.4	31	13.0	30	11.9	34	13.2	43	16.3
Wharton	12	28.4	2	4.7	4	9.5	6	14.2	5	11.8	10	23.0	5	11.4	6	13.6
Wheeler	0	0.0	1	19.8	1	19.7	0	0.0	0	0.0	0	0.0	0	0.0	0	0.0
Wichita	23	18.0	9	7.0	10	7.7	8	6.2	3	2.3	6	4.7	10	7.8	12	9.4
Wilbarger	1	7.0	1	7.2	0	0.0	1	6.9	1	7.0	1	6.6	1	6.5	1	6.5
Willacy	2	9.6	3	14.5	1	4.8	2	9.5	7	33.4	2	9.1	2	9.1	5	22.5
Williamson	12	3.9	19	5.7	11	3.1	19	5.1	26	6.6	23	5.6	37	8.5	36	7.9
Wilson	3	8.0	0	0.0	1	2.6	2	4.9	1	2.4	5	11.3	2	4.4	5	10.6
Winkler	0	0.0	0	0.0	1	14.7	0	0.0	0	0.0	0	0.0	0	0.0	0	0.0
Wise	2	3.7	0	0.0	3	5.3	0	0.0	0	0.0	2	3.3	0	0.0	2	3.2
Wood	1	2.5	2	5.0	2	4.8	2	4.8	5	11.8	1	2.3	4	8.9	1	2.2
Yoakum	0	0.0	0	0.0	0	0.0	0	0.0	0	0.0	1	12.2	1	12.1	0	0.0
Young	0	0.0	1	5.6	0	0.0	0	0.0	1	5.5	1	5.4	0	0.0	1	5.3
Zapata	0	0.0	2	14.5	0	0.0	0	0.0	1	7.0	0	0.0	3	19.7	2	12.8
Zavala	1	8.5	1	8.6	0	0.0	0	0.0	1	8.4	2	15.7	1	7.8	3	23.1
Total	4,191	18.6	4,374	19.1	4,961	21.1	5,573	23.3	6,321	26.0	6,989	28.1	6,382	25.2	6,142	23.7

* Rates represent cases per 100,000 population.

Texas Total Syphilis Cases and Case Rates by Year of Report, 2004-2011



Total Syphilis Cases and Rates by Sex, Race/Ethnicity and Age Group, 2004-2011

County	2004		2005		2006		2007		2008		2009		2010		2011	
	Cases	Rate*	Cases	Rate*	Cases	Rate*	Cases	Rate*	Cases	Rate*	Cases	Rate*	Cases	Rate*	Cases	Rate*
Sex																
Male	2,753	24.5	2,709	23.7	3,163	26.9	3,597	30.1	3,916	32.1	4,507	36.1	4,231	33.2	4,360	33.5
Female	1,437	12.8	1,665	14.6	1,796	15.3	1,974	16.5	2,405	19.8	2,477	20.0	2,149	17.0	1,781	13.8
Unknown	1		0		2		2		0		5		2		1	
Race																
White	918	8.2	854	7.6	952	8.4	1,099	9.7	1,252	11.0	1,289	11.3	1,115	9.7	1,207	10.5
Black	1,667	64.9	1,907	73.4	2,318	84.3	2,725	97.9	3,106	110.0	3,489	121.4	3,073	105.0	2,722	91.4
Hispanic	1,446	18.4	1,468	18.0	1,542	18.2	1,548	17.6	1,801	19.8	2,069	21.8	2,045	20.8	2,091	20.5
Other	78	9.2	124	13.9	92	9.7	87	8.8	86	8.2	90	8.2	96	8.3	88	7.2
Unknown	82		21		57		114		76		52		53		34	
Age Group																
0 - 9	66	1.9	66	1.9	85	2.4	95	2.6	129	3.5	126	3.3	105	2.7	114	2.9
10 - 14	2	0.1	7	0.4	20	1.2	16	0.9	14	0.8	14	0.8	15	0.9	7	0.4
15 - 19	181	10.5	280	15.9	374	20.7	381	20.7	539	28.9	627	34.5	571	31.5	506	28.0
20 - 24	564	32.5	687	39.0	848	47.1	948	52.2	1,192	64.9	1,479	79.4	1,456	76.9	1,321	68.6
25 - 29	560	33.9	642	37.9	816	46.3	855	47.0	1,073	57.0	1,201	61.6	1,068	53.8	1,070	53.2
30 - 34	603	35.1	585	34.0	596	34.2	703	40.1	767	43.0	851	45.8	820	42.9	836	42.3
35 - 39	627	38.3	577	34.7	644	37.2	721	40.6	704	38.8	719	37.8	641	33.3	610	31.4
40 - 44	562	32.5	559	32.5	570	33.0	633	37.1	640	37.8	658	37.5	580	32.4	561	30.3
45+	1,025	14.3	970	13.2	1,008	13.2	1,221	15.5	1,263	15.7	1,314	15.8	1,126	13.2	1,117	12.7
Unknown	1		1		0		0		0		0		0		0	
Total	4,191	18.6	4,374	19.1	4,961	21.1	5,573	23.3	6,321	26.0	6,989	28.1	6,382	25.2	6,142	23.7

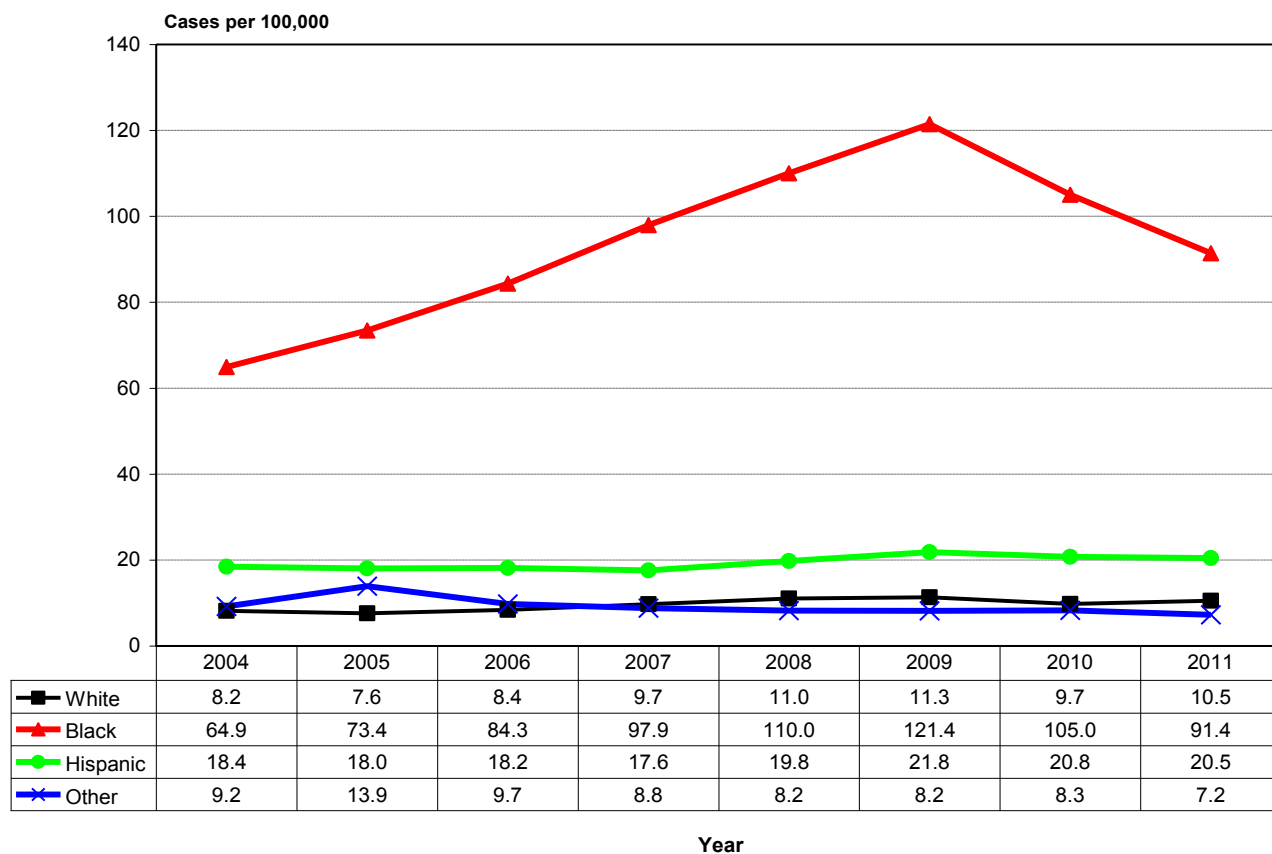
* Rates represent cases per 100,000 population.

Total Syphilis Cases by Age Group, Race/Ethnicity and Sex, 2011

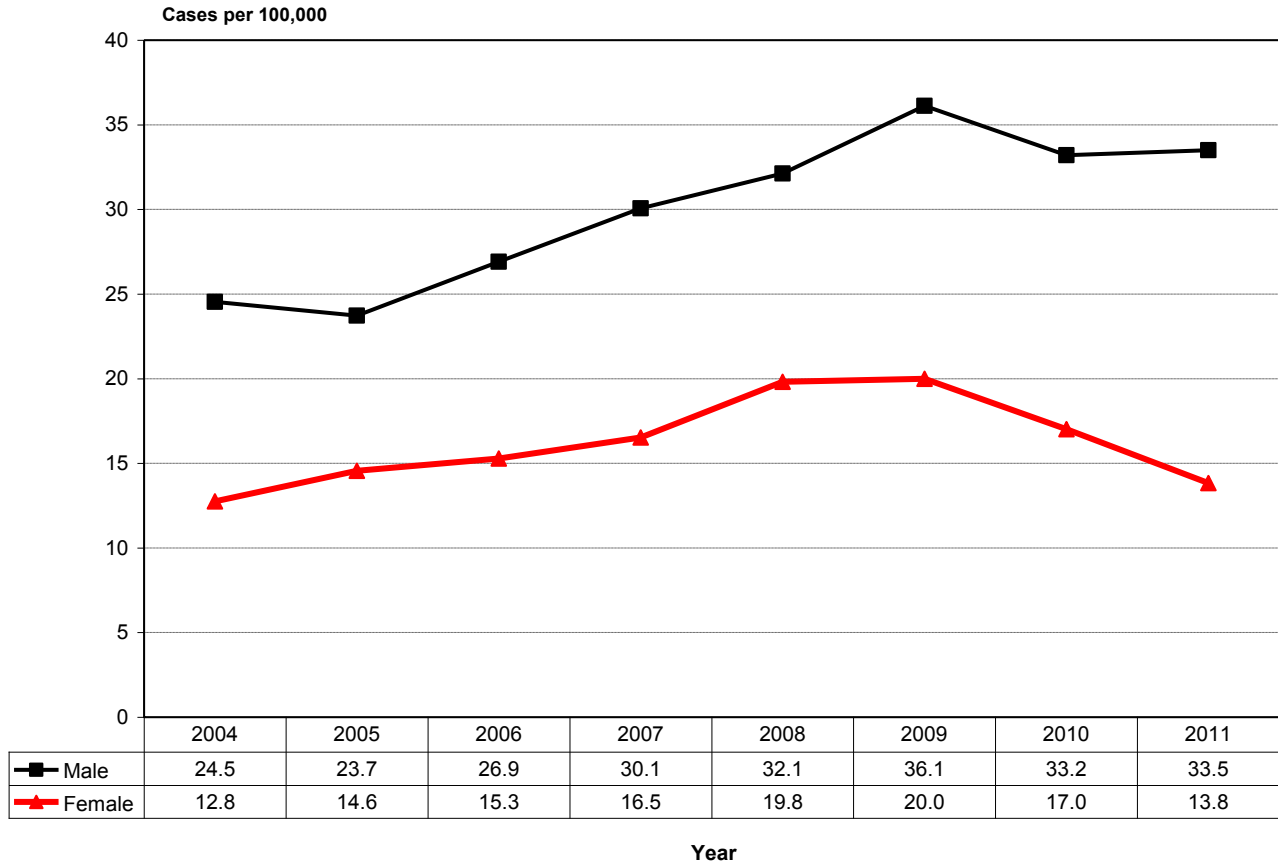
Age Group	Male						Female						Unk Sex	Total	Percent
	White	Black	Hisp.	Other	Unk	Total	White	Black	Hisp.	Other	Unk	Total			
0 - 9	9	39	22	1	0	71	5	21	16	1	0	43	0	114	1.9%
10 - 14	0	1	0	0	0	1	0	5	1	0	0	6	0	7	0.1%
15 - 19	15	152	77	1	0	245	30	171	60	0	0	261	0	506	8.2%
20 - 24	130	432	306	7	2	877	47	257	130	5	4	443	1	1,321	21.5%
25 - 29	133	320	309	10	5	777	41	160	85	3	4	293	0	1,070	17.4%
30 - 34	145	200	246	7	0	598	28	120	84	6	0	238	0	836	13.6%
35 - 39	114	140	181	7	1	443	23	85	52	5	2	167	0	610	9.9%
40 - 44	136	138	159	6	3	442	26	55	36	1	1	119	0	561	9.1%
45+	293	323	264	17	9	906	32	103	63	11	2	211	0	1,117	18.2%
Unk	0	0	0	0	0	0	0	0	0	0	0	0	0	0	0.0%
Total	975	1,745	1,564	56	20	4,360	232	977	527	32	13	1,781	1	6,142	
Percent	22.4%	40.0%	35.9%	1.3%	0.5%		13.0%	54.9%	29.6%	1.8%	0.7%				
Percent Male						71.0%	Percent Female						29.0%		

Total White	1,207	19.7%
Total Black	2,722	44.3%
Total Hispanic	2,091	34.0%
Total Other	88	1.4%
Total Unknown	34	0.6%
Total	6,142	

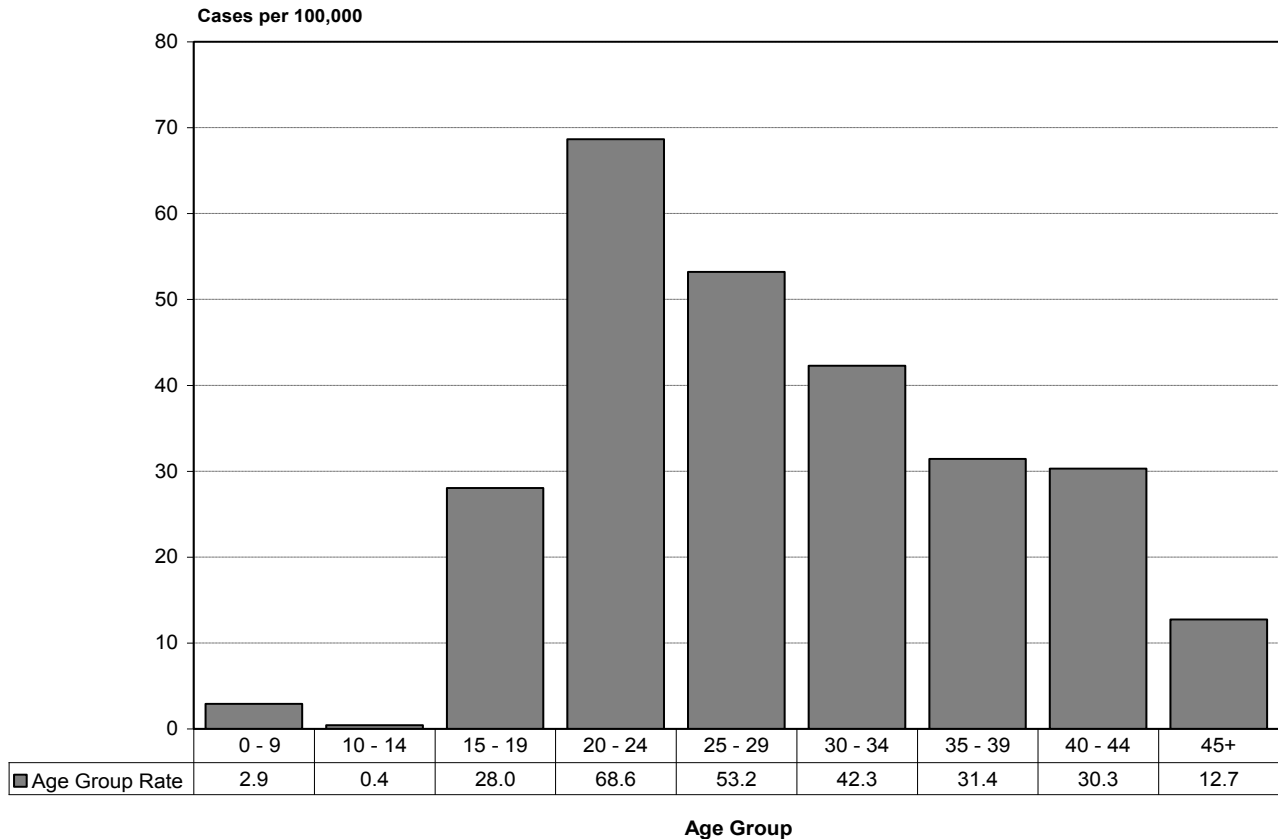
Texas Total Syphilis Case Rates by Race and Year of Report, 2004-2011



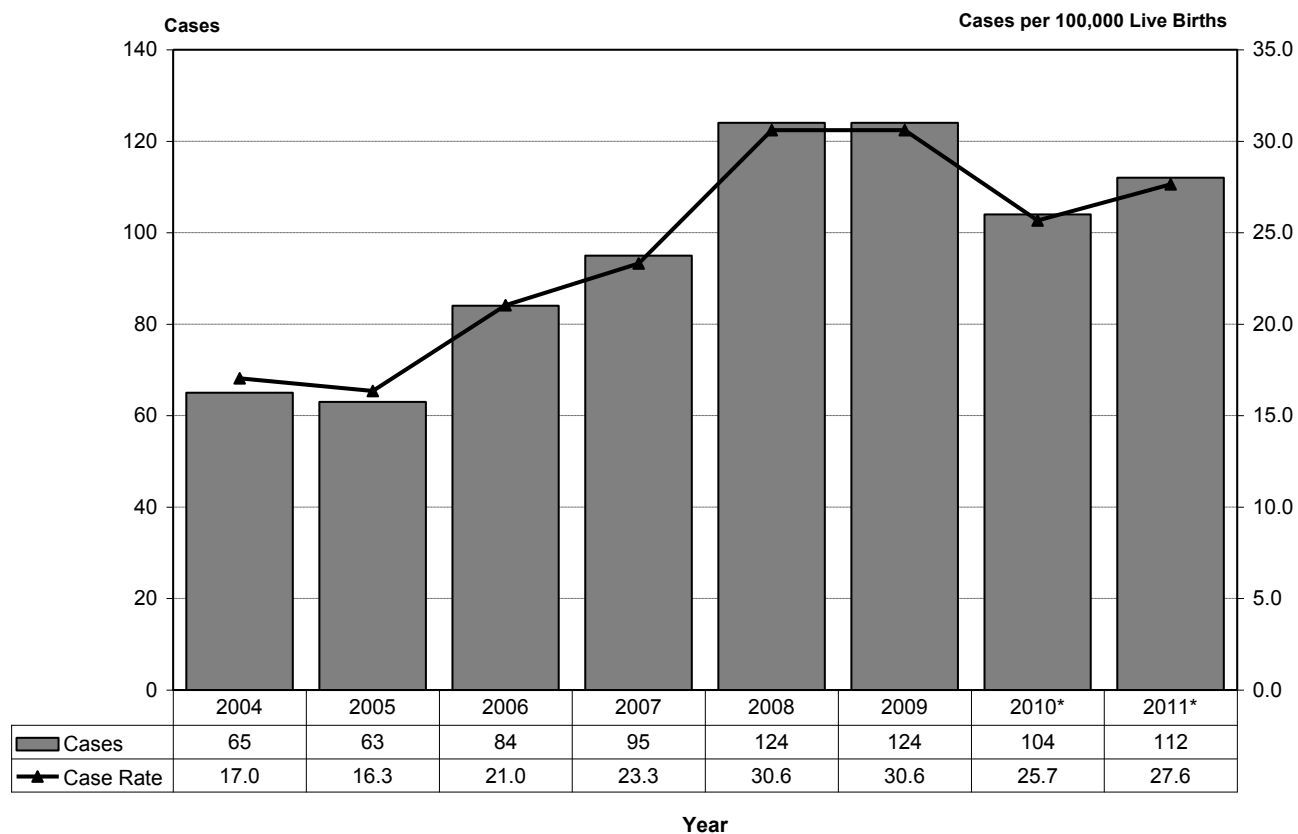
Texas Total Syphilis Case Rates by Sex and Year of Report, 2004-2011



Texas Total Syphilis Case Rates by Age Group and Year of Report, 2011



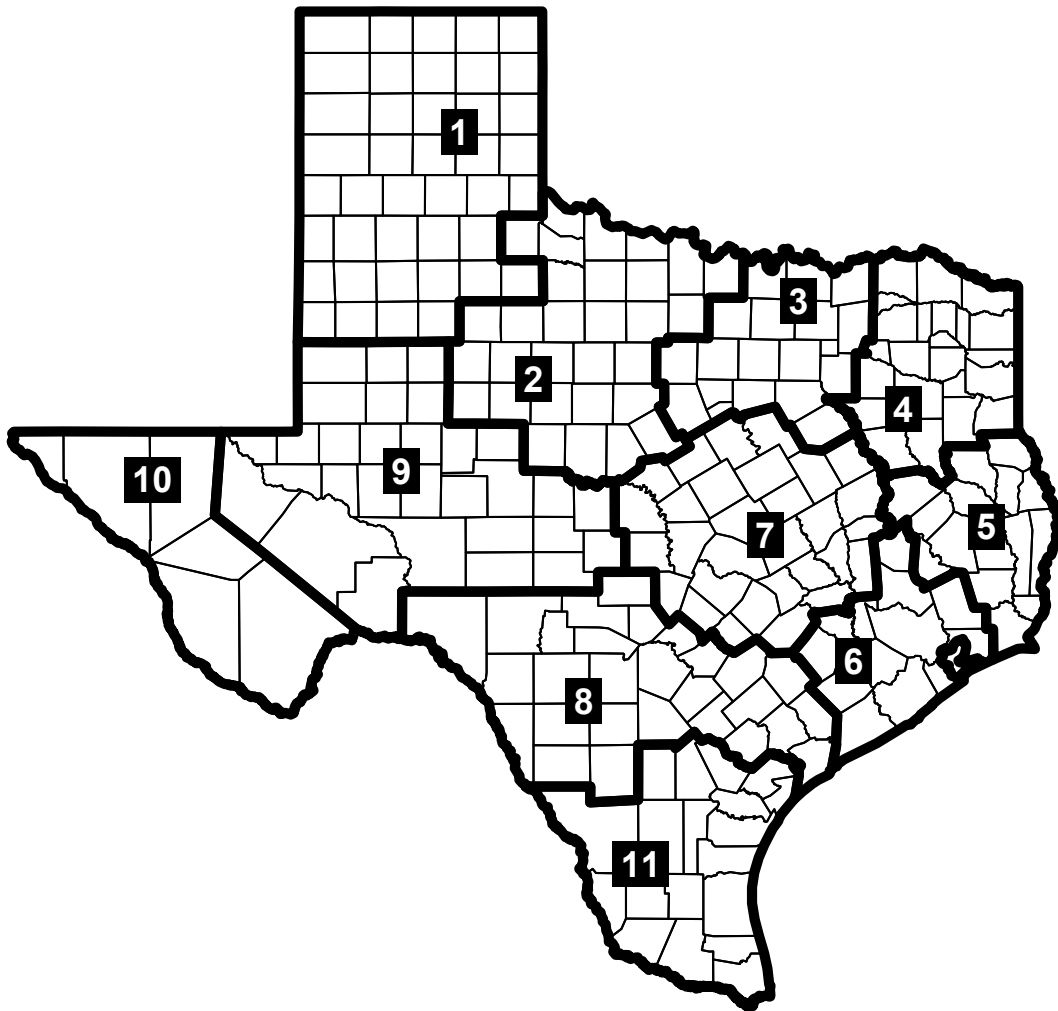
Texas Congenital Syphilis Cases and Case Rates by Year of Report, 2004-2011



Congenital Syphilis Cases and Rates by Race/Ethnicity, 2004-2011

County	2004		2005		2006		2007		2008		2009		2010		2011	
	Cases	Rate*	Cases	Rate*	Cases	Rate*	Cases	Rate*	Cases	Rate*	Cases	Rate*	Cases	Rate*	Cases	Rate*
Race																
White	4	2.9	7	5.1	11	7.9	5	3.6	18	13.0	6	4.3	12	8.7	14	10.1
Black	24	57.0	23	54.3	33	71.9	49	106.0	66	144.0	66	144.0	50	109.1	58	126.6
Hispanic	35	18.6	32	16.7	37	18.7	37	18.1	37	18.2	49	24.2	37	18.2	38	18.7
Other	0	0.0	1	6.9	3	17.8	0	0.0	2	10.8	0	0.0	3	16.1	2	10.8
Unknown	2		0		0		4		1		3		2		0	
Total	65	17.0	63	16.3	84	21.0	95	23.3	124	30.6	124	30.6	104	25.7	112	27.6

* Rates represent cases per 100,000 live births. 2009-2011 rates are based on 2008 birth data.



Texas Public Health Regions

STD Cases and Rates by Public Health Region, 2011

Public Health Region	Chlamydia		Gonorrhea		P&S Syphilis		Congenital Syph.	Total Syphilis	
	Cases	Rate*	Cases	Rate*	Cases	Rate*	Cases	Cases	Rate*
Region 1	4,351	515.1	1,185	140.3	17	2.0	1	76	9.0
Region 2	1,999	358.0	409	73.2	14	2.5	-	35	6.3
Region 3	32,053	447.7	8,763	122.4	312	4.4	21	1,854	25.9
Region 4	4,499	398.5	1,417	125.5	45	4.0	16	269	23.8
Region 5	3,187	414.1	898	116.7	67	8.7	1	241	31.3
Region 6	26,801	427.5	6,930	110.5	330	5.3	36	1,867	29.8
Region 7	17,342	578.4	4,110	137.1	136	4.5	7	558	18.6
Region 8	14,653	564.3	3,932	151.4	192	7.4	9	777	29.9
Region 9	2,990	537.5	662	119.0	7	1.3	3	55	9.9
Region 10	4,597	567.3	762	94.0	14	1.7	3	111	13.7
Region 11	9,967	454.6	1,425	65.0	28	1.3	15	299	13.6
State Total	122,439	473.0	30,493	117.8	1,162	4.5	112	6,142	23.7

* Rates represent cases per 100,000 population.

STD Cases by City of Residence, 2011

City of Residence	Chlamydia	Gonorrhea	P&S Syphilis	Total Syphilis
Houston	17,447	4,943	236	1,406
Dallas	10,989	3,546	131	1,021
San Antonio	11,089	3,293	178	670
Austin	5,622	1,350	94	329
Fort Worth	4,376	1,295	68	211
El Paso	4,001	655	13	99
Corpus Christi	2,298	550	22	55
Lubbock	1,841	664	12	45
Arlington	1,805	483	27	76
Killeen	1,342	453	4	22
Waco	1,233	361	8	29
Amarillo	1,230	320	1	7
Fort Hood	1,271	247	-	0
Irving	1,215	275	7	47
Beaumont	897	314	41	104
Garland	974	248	9	48
Tyler	894	306	4	40
Grand Prairie	898	214	14	44
Mesquite	826	255	3	46
Longview	803	264	9	53
Laredo	983	67	-	42
Midland	812	190	1	11
Odessa	807	188	2	19
Temple	749	229	-	7
San Marcos	759	108	2	13
San Angelo	668	142	2	14
Bryan	625	180	2	19
Mcallen	721	71	1	28
Abilene	639	145	7	14
Brownsville	718	51	-	10
Denton	619	126	-	8
Round Rock	627	103	4	18
Wichita Falls	586	144	4	15
Humble	573	134	8	31
Plano	596	110	2	21
Spring	584	110	6	27
Edinburg	610	88	1	23
Pasadena	586	98	3	14
Katy	584	94	8	36
Mckinney	497	106	1	14
Desoto	459	131	3	18
Harlingen	465	92	-	10
Nacogdoches	418	135	-	3
Baytown	441	99	3	16
Mission	492	48	-	27
Victoria	455	84	1	20
Lewisville	426	79	2	8
Port Arthur	389	112	3	37
Carrollton	373	79	3	16
Lancaster	318	116	2	13
Total	122,439	30,493	1,162	6,142

* Top cities listed by total STD cases reported.

25 Counties with the Highest STD Case Numbers, 2011

Rank	Chlamydia		Gonorrhea		P&S Syphilis		Total Syphilis	
	County	Cases	County	Cases	County	Cases	County	Cases
1	Harris	21,500	Harris	5,735	Harris	273	Harris	1,576
2	Dallas	16,848	Dallas	5,143	Bexar	184	Dallas	1,309
3	Bexar	11,828	Bexar	3,470	Dallas	174	Bexar	693
4	Tarrant	7,904	Tarrant	2,186	Tarrant	124	Tarrant	362
5	Travis	6,223	Travis	1,505	Travis	99	Travis	351
6	El Paso	4,512	Bell	1,075	Jefferson	46	Jefferson	148
7	Bell	3,933	El Paso	747	Nueces	23	Hidalgo	123
8	Hidalgo	3,339	Lubbock	688	Bowie	19	El Paso	109
9	Nueces	2,520	Nueces	578	Fort Bend	17	Fort Bend	84
10	Collin	2,105	Collin	447	El Paso	14	Bowie	83
11	Lubbock	1,940	Jefferson	441	Lubbock	12	Galveston	66
12	Denton	1,860	McLennan	424	McLennan	10	Collin	65
13	Cameron	1,634	Galveston	391	Gregg	10	Gregg	59
14	McLennan	1,540	Hidalgo	377	Galveston	10	Nueces	57
15	Jefferson	1,389	Denton	349	Brazoria	9	Lubbock	45
16	Williamson	1,254	Smith	341	Waller	8	Smith	44
17	Fort Bend	1,178	Gregg	309	Orange	8	Webb	43
18	Galveston	1,174	Potter	274	Walker	7	Cameron	40
19	Hays	1,098	Fort Bend	267	Taylor	7	Williamson	36
20	Brazoria	1,058	Brazos	240	Collin	7	Montgomery	36
21	Smith	1,021	Williamson	219	Hays	6	McLennan	35
22	Gregg	998	Cameron	213	Angelina	6	Brazoria	35
23	Webb	994	Midland	190	Williamson	5	Bell	34
24	Brazos	990	Ector	188	Bell	5	Denton	31
25	Potter	966	Brazoria	180	Wichita	4	Ellis	30

25 Counties with the Highest STD Case Rates, 2011

Rank	Chlamydia		Gonorrhea		P&S Syphilis		Total Syphilis	
	County	Rate*	County	Rate*	County	Rate*	County	Rate*
1	Loving	1,538.5	Bell	362.4	Bowie	20.4	Garza	189.4
2	Bell	1,325.7	Lubbock	255.1	Jefferson	19.0	Bowie	89.0
3	Gregg	801.8	Gregg	248.2	Waller	18.5	Cass	68.6
4	Nueces	775.6	Dawson	216.9	Floyd	14.6	Glasscock	65.2
5	Potter	756.4	Nacogdoches	216.0	Andrews	13.9	Waller	62.4
6	Lubbock	719.5	Potter	214.5	Madison	13.6	Jefferson	61.1
7	Bexar	712.2	Robertson	212.0	Cass	13.1	Dallas	53.2
8	Nacogdoches	695.8	Harrison	209.7	Goliad	12.9	Bee	52.6
9	Dallas	684.8	Dallas	209.0	Bexar	11.1	Gregg	47.4
10	Uvalde	666.7	Bexar	208.9	Walker	10.8	Newton	47.2
11	Tom Green	662.9	Howard	188.1	Travis	9.8	Archer	41.9
12	McLennan	652.0	Navarro	183.3	Jones	9.6	Bexar	41.7
13	Hays	639.6	Limestone	182.9	Orange	9.4	Harris	37.7
14	Kleberg	634.2	Jefferson	182.0	Tyler	9.0	Reeves	36.8
15	Midland	618.2	McLennan	179.5	Hale	8.1	Travis	34.7
16	Travis	615.5	Lamar	178.4	Gregg	8.0	Madison	34.1
17	Brooks	612.5	Nueces	177.9	Nueces	7.1	Orange	29.5
18	Ector	606.3	Nolan	168.1	Dallas	7.1	Jasper	27.9
19	Howard	594.3	Smith	161.7	Angelina	7.0	Concho	26.2
20	Dimmit	588.4	Falls	159.9	Austin	6.8	Walker	26.1
21	Hockley	585.4	Bowie	159.8	Newton	6.7	Hudspeth	25.9
22	Navarro	580.4	Terry	157.9	Tarrant	6.6	Victoria	23.4
23	El Paso	576.6	Caldwell	149.7	Harris	6.5	Zavala	23.1
24	Jefferson	573.1	Travis	148.9	Robertson	5.9	Willacy	22.5
25	Robertson	571.2	Swisher	146.5	Young	5.3	Galveston	22.1

* Rates represent cases per 100,000 population.