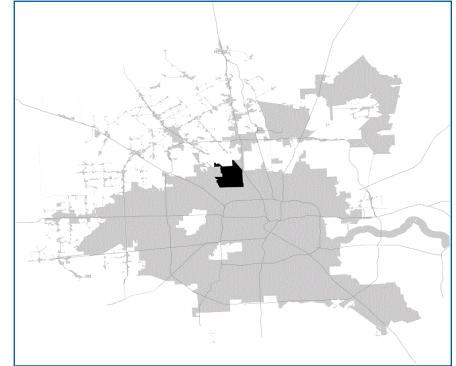


# SUPER Neighborhood RESOURCE ASSESSMENT



	Super Neighborhood		Houston	
	2000	2019	2000	2019
<b>Pop. characteristics</b>				
Total population	23,512	26,608	1,953,631	2,310,432
Persons per sq. mile	2,624	2,969	3,166	3,443
<b>Age of Population</b>				
Under 5 years	8%	8%	8%	8%
5- 17 years	23%	20%	19%	17%
18- 64 years	57%	58%	64%	65%
65 and over	12%	14%	9%	10%
<b>Ethnicity</b>				
Non Hispanic Whites	2%	6%	31%	24%
Non Hispanic Blacks	86%	60%	25%	22%
Hispanics	10%	31%	37%	45%
Non Hispanic Asians	0%	1%	6%	7%
Non Hispanic Others	1%	2%	1%	2%
<b>Income</b>				
Under \$25,000	51%	39%	33%	24%
\$25,000 to \$49,999	26%	23%	31%	24%
\$50,000 to \$99,999	18%	25%	24%	27%
Over \$100,000	5%	13%	12%	25%
<b>Median Household Income</b>	\$24,518	\$35,813	\$36,616	\$52,338
<b>Educational Status</b>				
No Diploma	38%	24%	30%	21%
High School Diploma	30%	34%	20%	23%
Some College	23%	26%	23%	23%
Bachelor's or Higher	10%	16%	27%	33%
<b>Housing and Households</b>				
Total housing units	8,548	9,851	782,378	968,704
Occupied	93%	90%	92%	89%
Vacant	7%	10%	8%	11%
Total households	7,943	8,851	717,945	858,374
Family households	5,871	5,968	457,549	521,891
Median Housing Value	\$48,095	\$105,391	\$79,300	\$171,800

**Description**

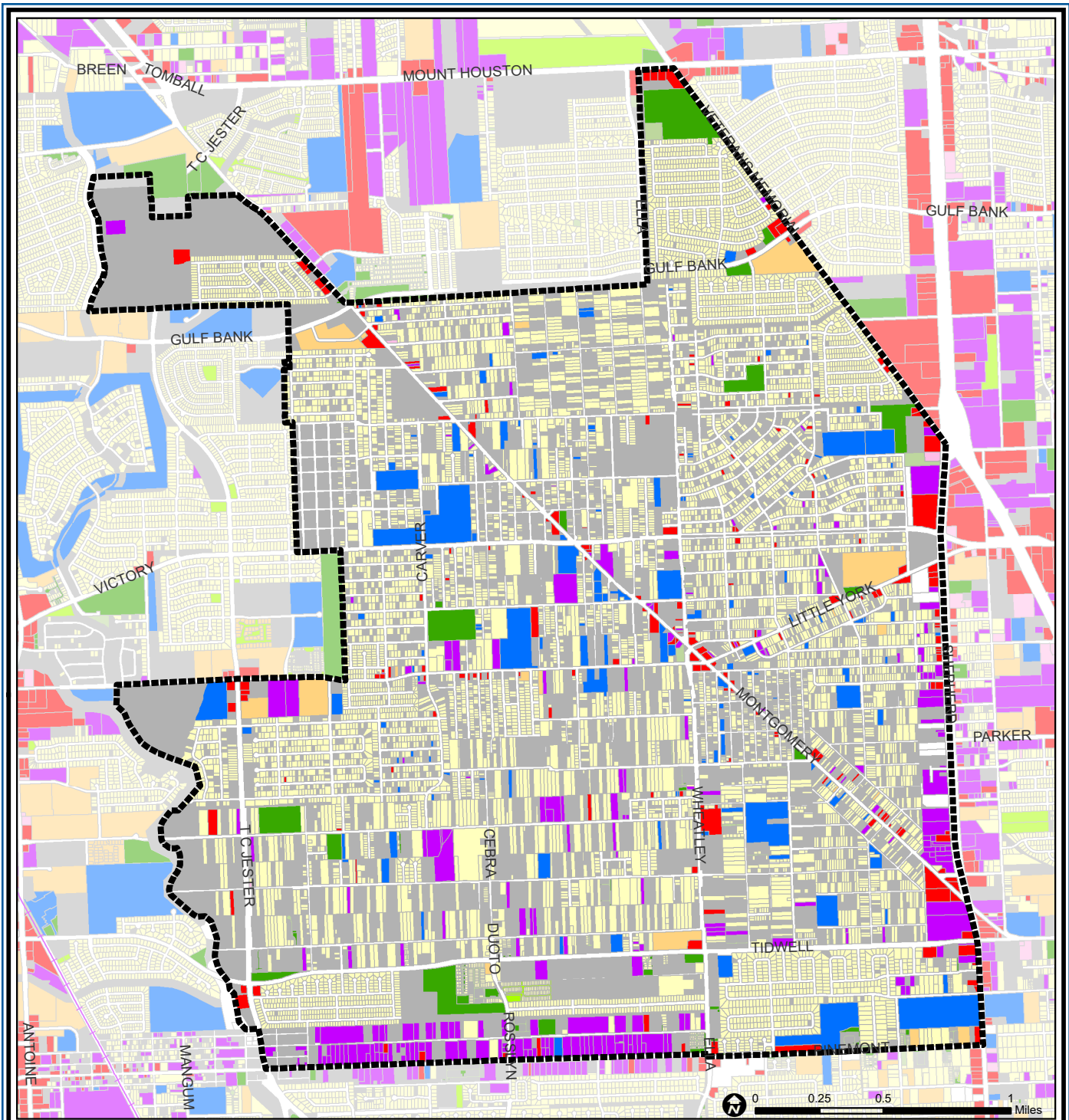
Acres Homes, a wooded area northwest of the city, was originally subdivided into large lots and marketed to African-Americans. Still primarily African-American, the community now includes a combination of large areas of pine forests with only a scattering of homes: small tract homes built in standard suburban subdivisions, and large comfortable homes on well-maintained wooded lots. There is little commercial or industrial development. The eastern part of the community is located in the Houston Independent School District (ISD), the western part is in the Aldine ISD. Water and sewer service was introduced into the original subdivisions during the 1970s as the area was annexed by the City of Houston.

**Highlights**

- ✓ Houston City Council Districts B, A, C, H
- ✓ Houston Independent School District
- ✓ Aldine Independent School District
- ✓ Klein Independent School District
- ✓ 5 Police beats (includes bordering beats)
- ✓ 5,733 acres (8.96 sq. miles)



**PLANNING &  
DEVELOPMENT  
DEPARTMENT**



## Acres Home: Land Use

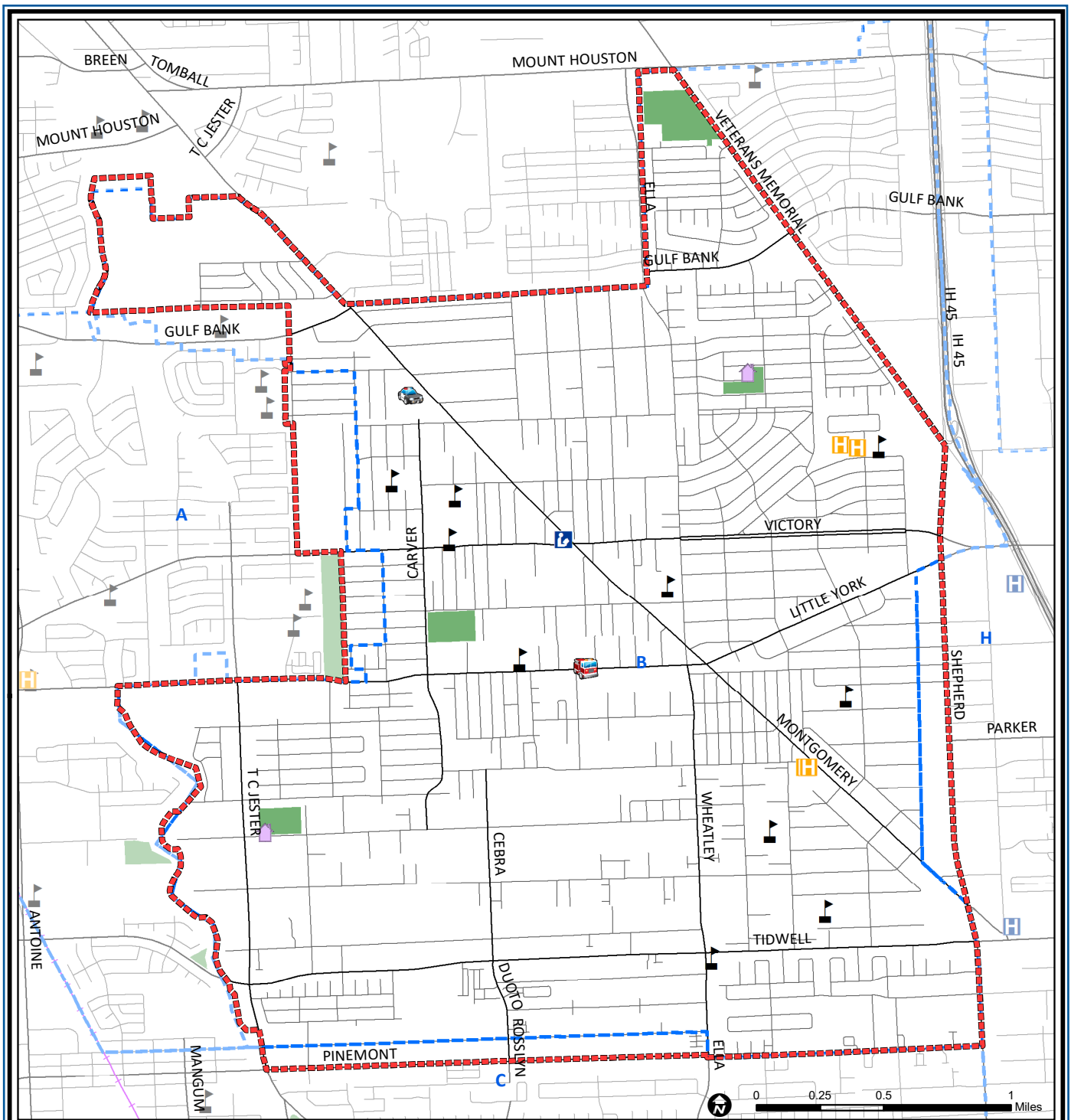
- |                             |                              |                         |
|-----------------------------|------------------------------|-------------------------|
| Freeway                     | Commercial                   | Parks and Open Space    |
| Rail Road                   | Office                       | Undeveloped             |
| Super Neighborhood Boundary | Industrial                   | Agricultural Production |
| Single-family Residential   | Public and Institutional     | Open Water              |
| Multi-family Residential    | Transportation and Utilities | Unknown                 |

Source: City of Houston GIS Database,  
 HCAD  
 Date: April 2021

This map is made available for reference purposes only and should not be substituted for a survey product. The City of Houston will not accept liability of any kind in conjunction with its use.



**PLANNING &  
 DEVELOPMENT  
 DEPARTMENT**



### Acres Home: Public Facilities

- |                             |                         |                     |
|-----------------------------|-------------------------|---------------------|
| Super Neighborhood Boundary | Airports                | Rail Road           |
| Community Centers           | Harris County Hospitals | Metro Rail Stations |
| Fire Station                | Private Hospitals       | Metro Rail Line     |
| Police Station              | Other Health Facilities | Parks               |
| School                      | Library                 | TIRZ                |

Source: City of Houston GIS Database

Date: April 2021

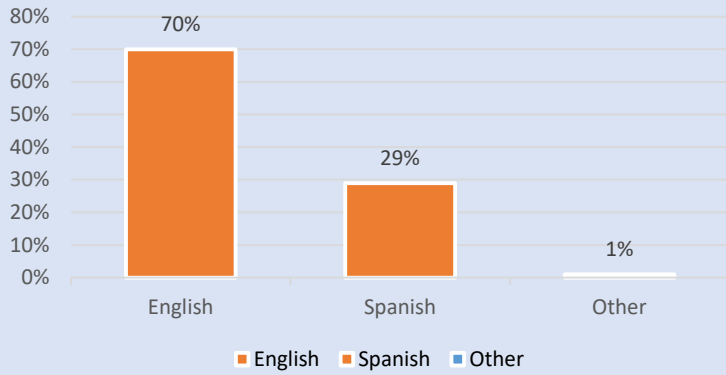
This map is made available for reference purposes only and should not be substituted for a survey product. The City of Houston will not accept liability of any kind in conjunction with its use.



**PLANNING & DEVELOPMENT DEPARTMENT**

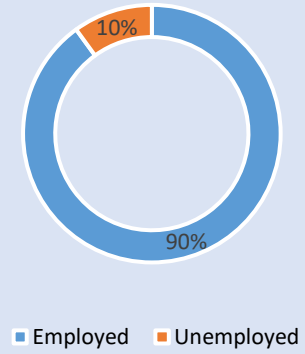
### Language Spoken at Home

#### ACRES HOME



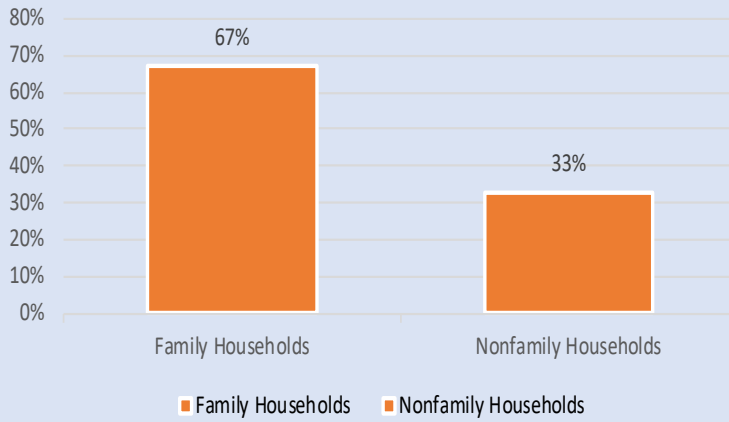
### Employment Status

#### ACRES HOME



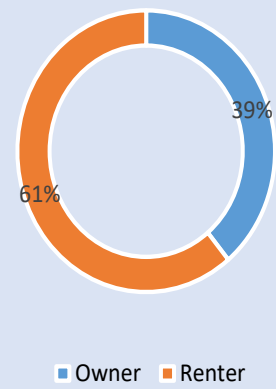
### Family Status

#### ACRES HOME



### Housing Occupancy

#### ACRES HOME



Source: U.S. Census Bureau, 2000  
American Community Survey, 2015-2019 Estimates



**PLANNING &  
DEVELOPMENT  
DEPARTMENT**