

SUPER Neighborhood RESOURCE ASSESSMENT



	Super Neighborhood		Houston	
	2000	2019	2000	2019
Pop. characteristics				
Total population	33,809	18,694	1,953,631	2,310,432
Persons per sq. mile	8,452	7,672	3,166	3,443
Age of Population				
Under 5 years	10%	10%	8%	8%
5- 17 years	18%	20%	19%	17%
18- 64 years	63%	62%	64%	65%
65 and over	8%	8%	9%	10%
Ethnicity				
Non Hispanic Whites	25%	18%	31%	24%
Non Hispanic Blacks	36%	12%	25%	22%
Hispanics	33%	64%	37%	45%
Non Hispanic Asians	4%	4%	6%	7%
Non Hispanic Others	2%	2%	1%	2%
Income				
Under \$25,000	40%	31%	33%	24%
\$25,000 to \$49,999	34%	28%	31%	24%
\$50,000 to \$99,999	21%	28%	24%	27%
Over \$100,000	6%	13%	12%	25%
Median Household Income	\$36,030	\$43,460	\$36,616	\$52,338
Educational Status				
No Diploma	27%	33%	30%	21%
High School Diploma	21%	27%	20%	23%
Some College	28%	19%	23%	23%
Bachelor's or Higher	24%	21%	27%	33%
Housing and Households				
Total housing units	13,811	7,911	782,378	968,704
Occupied	94%	79%	92%	89%
Vacant	6%	21%	8%	11%
Total households	13,039	6,241	717,945	858,374
Family households	8,157	4,150	457,549	521,891
Median Housing Value	\$84,162	\$175,474	\$79,300	\$171,800

Description

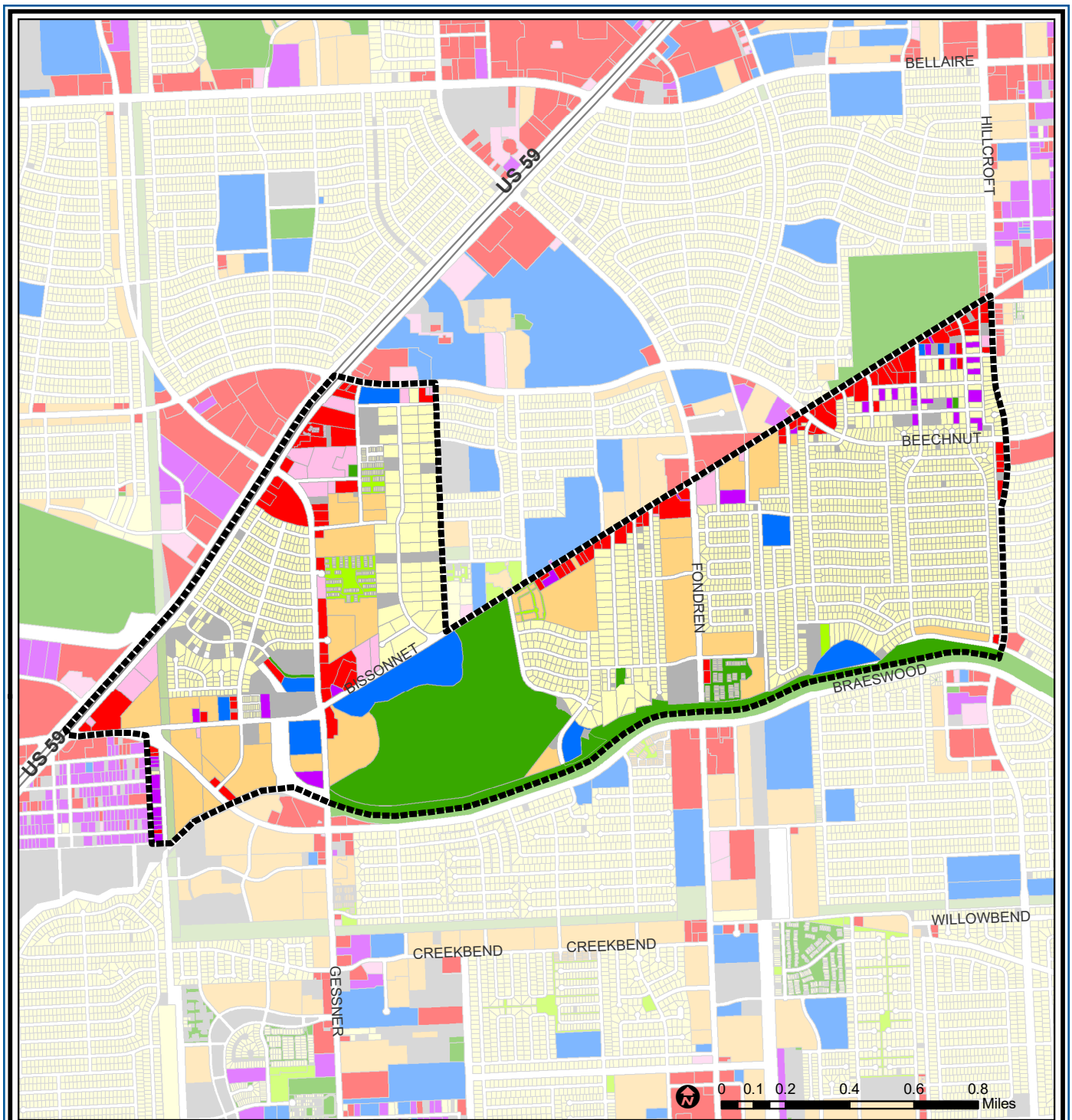
Braeburn is a part of southwest Houston along Brays Bayou west of Hillcroft. The first of these middle class subdivisions was developed after World War II at a time when Bissonnet provided the route into the city, rather than the Southwest Freeway. Development continued into the 1970s. The Braeburn Country Club is found in the center of the community. Many large tracts of land were developed as apartment complexes. Subdivisions found here include Robindell, Braeburn Glen, Braes Terrace, Larkwood, Braeburn Valley, and the acreage lot subdivision, Brae Acres.

Highlights

- ✓ Houston City Council Districts J & C
- ✓ Houston Independent School District
- ✓ Alief Independent School District
- ✓ 7 Police beats (includes bordering beats)
- ✓ 2,554 acres (4.0 sq. miles)



PLANNING & DEVELOPMENT DEPARTMENT



Braeburn : Land Use

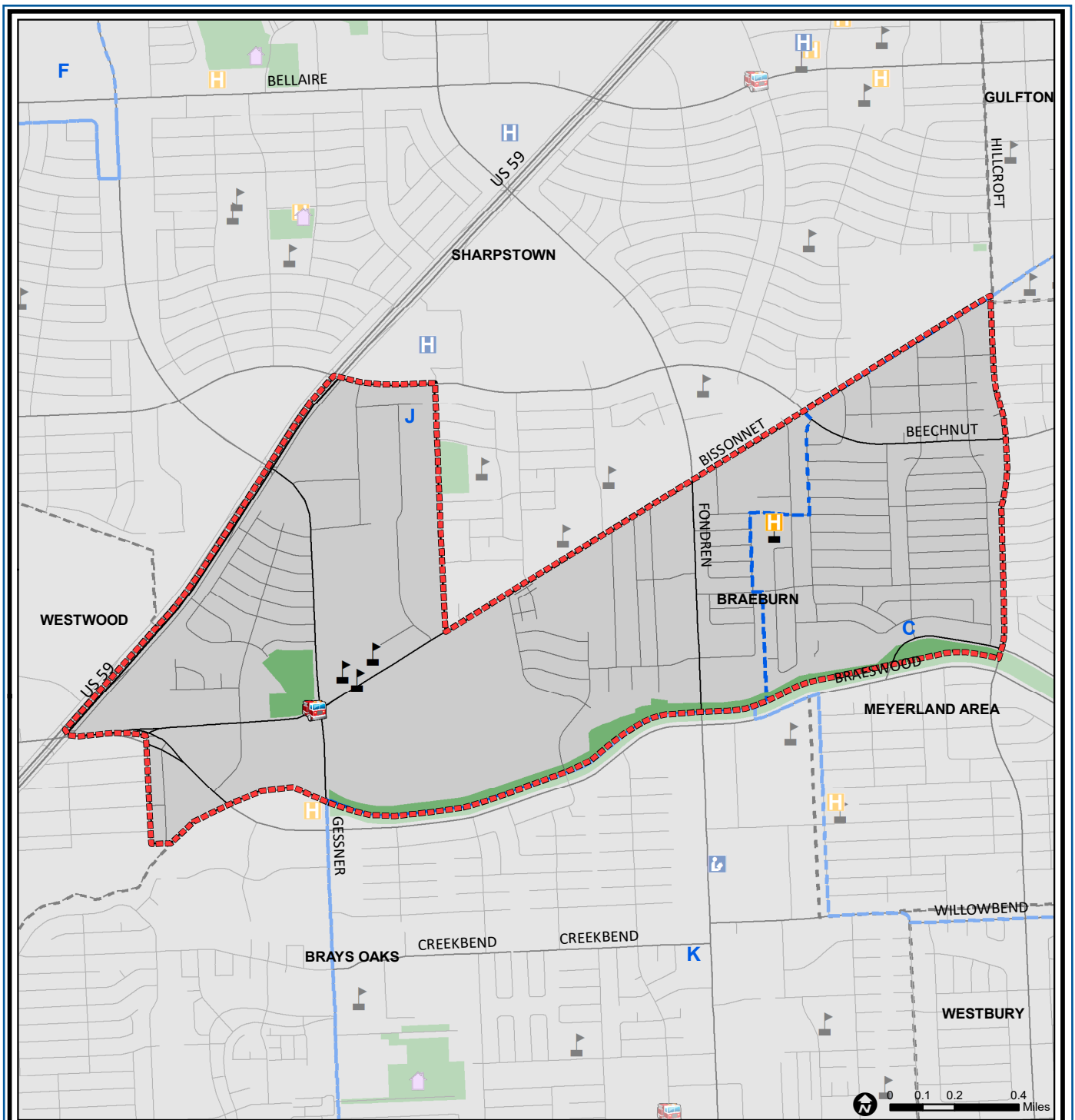
- | | | |
|-----------------------------|------------------------------|-------------------------|
| Freeway | Commercial | Parks and Open Space |
| Rail Road | Office | Undeveloped |
| Super Neighborhood Boundary | Industrial | Agricultural Production |
| Single-family Residential | Public and Institutional | Open Water |
| Multi-family Residential | Transportation and Utilities | Unknown |

Source: City of Houston GIS Database, HCAD
Date: April 2021

This map is made available for reference purposes only and should not be substituted for a survey product. The City of Houston will not accept liability of any kind in conjunction with its use.



PLANNING & DEVELOPMENT DEPARTMENT



Braeburn: Public Facilities

- | | | |
|-----------------------------|-------------------------|---------------------|
| Super Neighborhood Boundary | Airports | Rail Road |
| Community Centers | Harris County Hospitals | Metro Rail Stations |
| Fire Station | Private Hospitals | Metro Rail Line |
| Police Station | Other Health Facilities | Parks |
| School | Library | TIRZ |

Source: City of Houston GIS Database

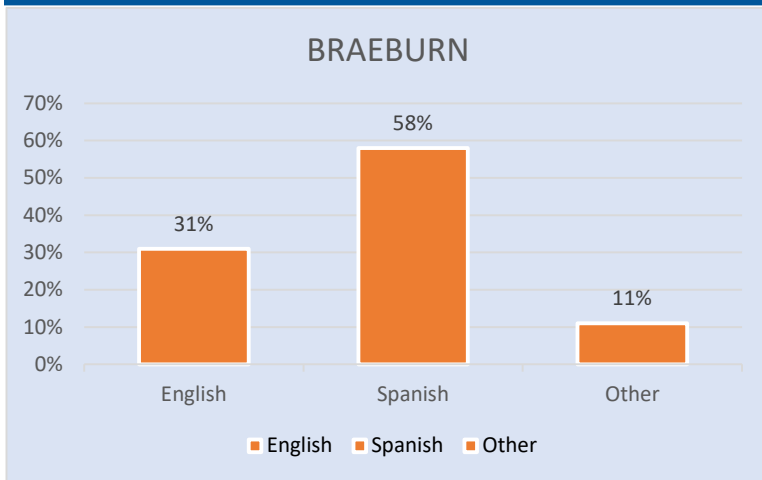
Date: April 2021

This map is made available for reference purposes only and should not be substituted for a survey product. The City of Houston will not accept liability of any kind in conjunction with its use.

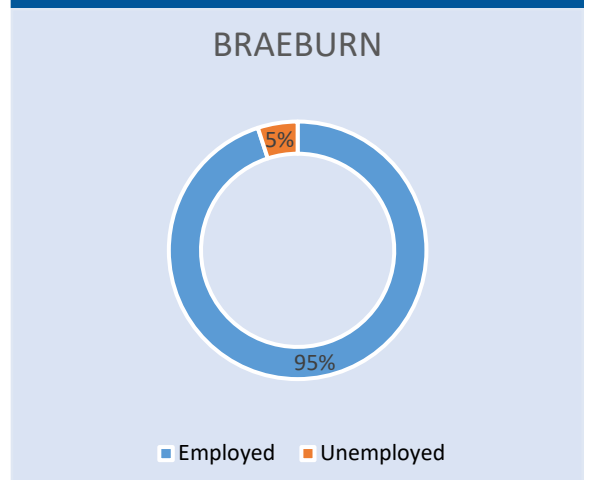


PLANNING & DEVELOPMENT DEPARTMENT

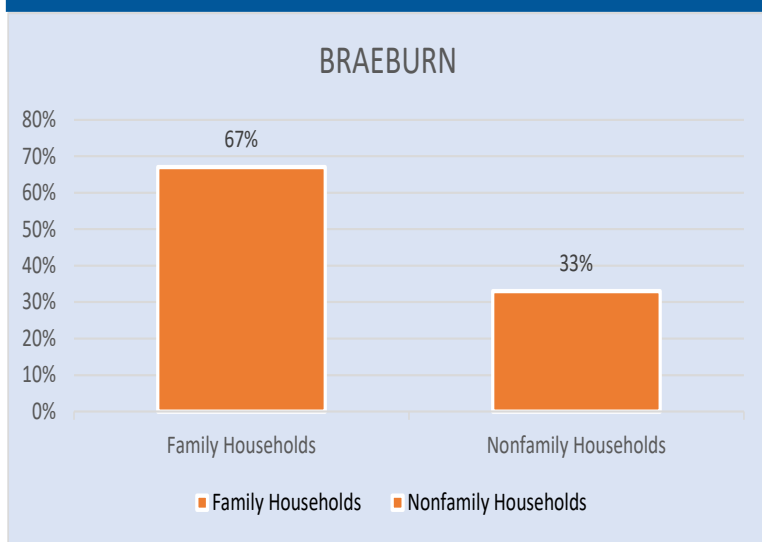
Language Spoken at Home



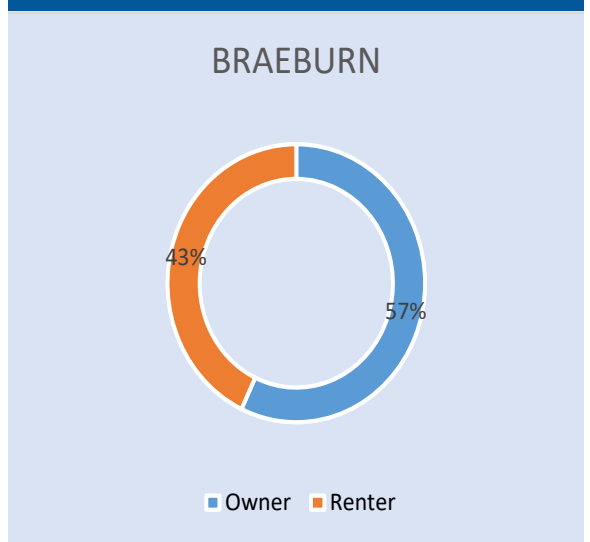
Employment Status



Family Status



Housing Occupancy



Source: U.S. Census Bureau, 2000
American Community Survey, 2015-2019 Estimates



**PLANNING &
DEVELOPMENT
DEPARTMENT**