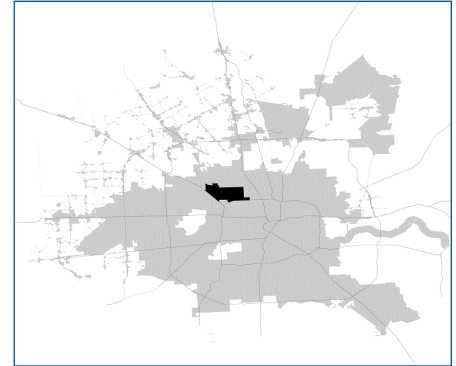


SUPER

Neighborhood

RESOURCE ASSESSMENT



	Super Neighborhood		Houston	
Pop. characteristics	2000	2019	2000	2019
Total population	42,852	44,319	1,953,631	2,310,432
Persons per sq. mile	4,948	5,127	3,166	3,443
Age of Population				
Under 5 years	7%	10%	8%	8%
5- 17 years	16%	15%	19%	17%
18- 64 years	64%	62%	64%	65%
65 and over	13%	13%	9%	10%
Ethnicity				
Non Hispanic Whites	53%	46%	31%	24%
Non Hispanic Blacks	8%	7%	25%	22%
Hispanics	36%	43%	37%	45%
Non Hispanic Asians	2%	2%	6%	7%
Non Hispanic Others	1%	2%	1%	2%
Income				
Under \$25,000	27%	20%	33%	24%
\$25,000 to \$49,999	32%	20%	31%	24%
\$50,000 to \$99,999	30%	23%	24%	27%
Over \$100,000	11%	37%	12%	25%
Median Household Income	\$42,727	\$83,258	\$36,616	\$52,338
Educational Status				
No Diploma	22%	13%	30%	21%
High School Diploma	27%	22%	20%	23%
Some College	27%	22%	23%	23%
Bachelor's or Higher	24%	43%	27%	33%
Housing and Households				
Total housing units	18,194	18,965	782,378	968,704
Occupied	95%	91%	92%	89%
Vacant	5%	9%	8%	11%
Total households	17,327	17,334	717,945	858,374
Family households	10,894	11,146	457,549	521,891
Median Housing Value	\$85,141	\$362,795	\$79,300	\$171,800

Description

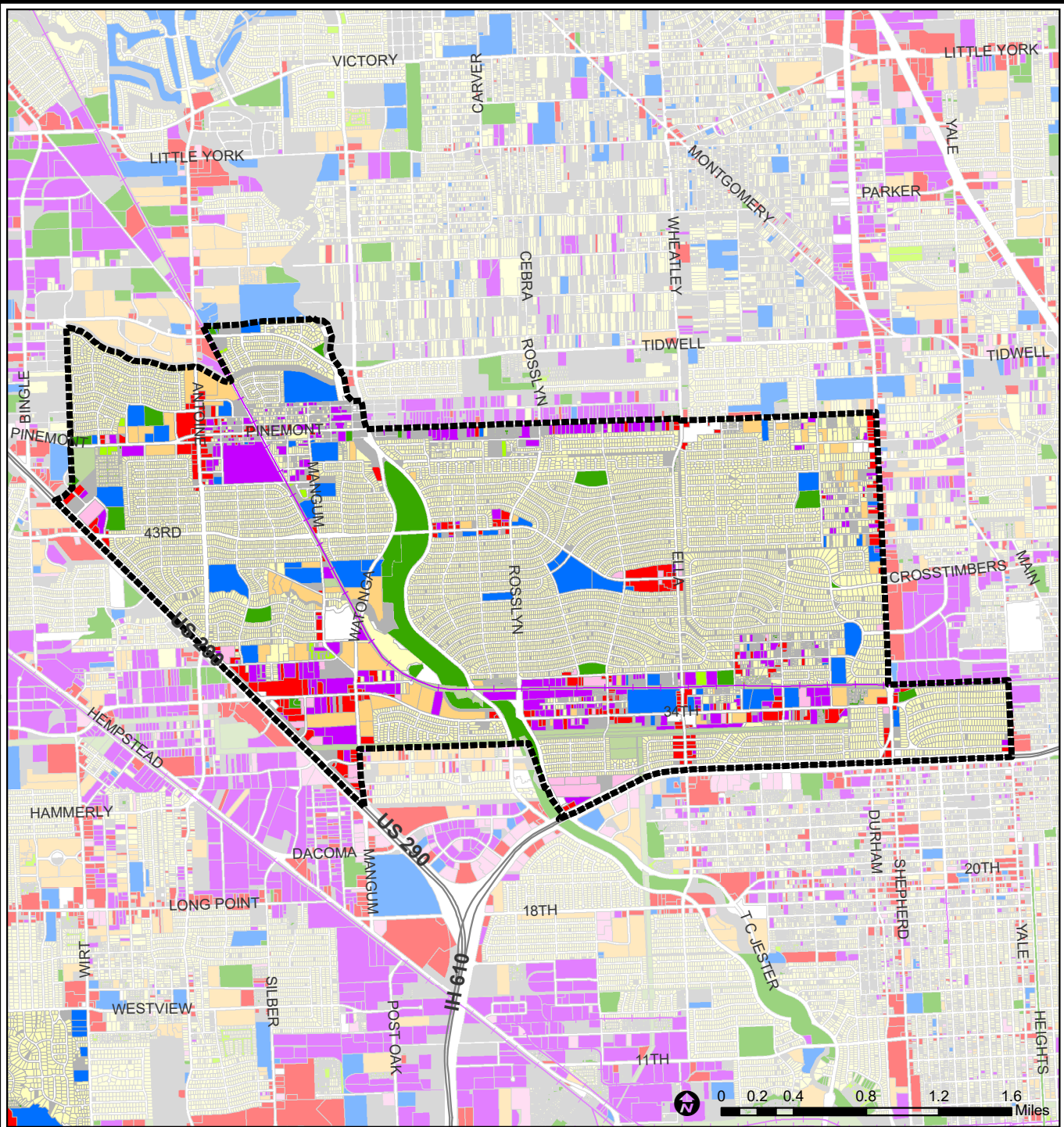
Central Northwest (Oak Forest / Garden Oaks) is located between Pinemont, Shepherd, the North Loop West and the Northwest Freeway (US 290). Just prior to WWII, Garden Oaks was laid out as a garden suburb with curvilinear streets and a full range of housing from cottages to mansions. Oak Forest was developed immediately after the war, and soon became the largest residential development in Houston at the time. Between the 1950s and the 1970s, Candlelight Estates, Shepherd Park and other surrounding subdivisions were developed. The area's thick pine trees and proximity to Loop 610 makes this community increasingly attractive to homebuyers. This community is deed-restricted and served by Houston ISD.

Highlights

- ✓ Houston City Council Districts C & A
- ✓ Houston Independent School District
- ✓ Aldine Independent School District
- ✓ 5 Police beats (includes bordering beats)
- ✓ 5,541 acres (8.66 sq. miles)



**PLANNING &
DEVELOPMENT
DEPARTMENT**



Central Northwest : Land Use

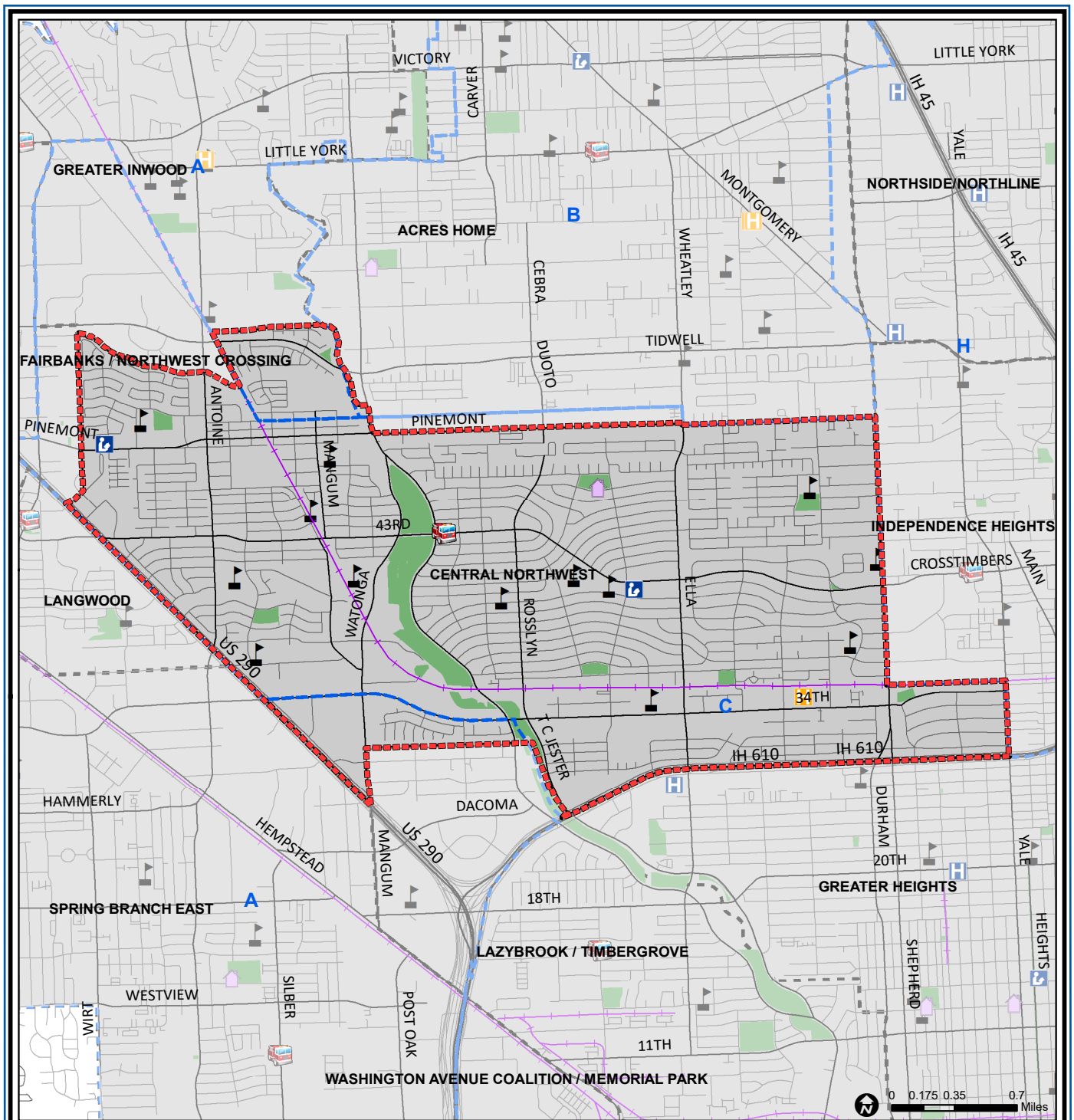
	Freeway		Commercial		Parks and Open Space
	Rail Road		Office		Undeveloped
	Super Neighborhood Boundary		Industrial		Agricultural Production
	Single-family Residential		Public and Institutional		Open Water
	Multi-family Residential		Transportation and Utilities		Unknown

Source: City of Houston GIS Database,
HCAD
Date: April 2021

This map is made available for reference purposes only and should not be substituted for a survey product. The City of Houston will not accept liability of any kind in conjunction with its use.



**PLANNING &
DEVELOPMENT
DEPARTMENT**



Central Northwest : Public Facilities

	Super Neighborhood Boundary		Airports		Rail Road
	Community Centers		Harris County Hospitals		Metro Rail Stations
	Fire Station		Private Hospitals		Metro Rail Line
	Police Station		Other Health Facilities		Parks
	School		Library		TIRZ

Source: City of Houston GIS Database

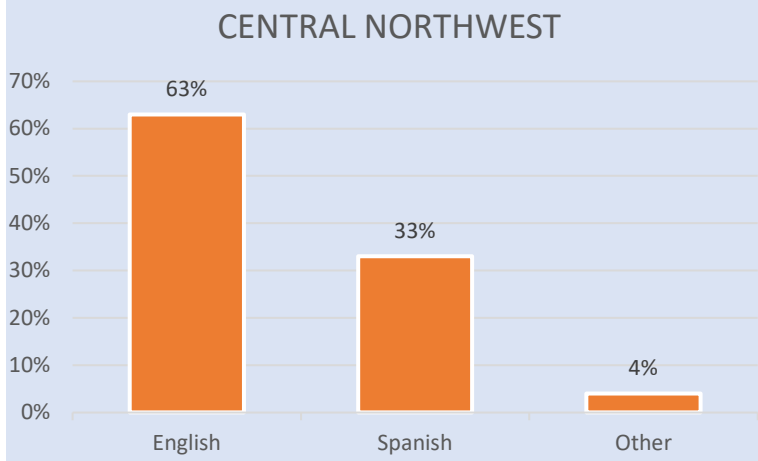
Date: April 2021

This map is made available for reference purposes only and should not be substituted for a survey product. The City of Houston will not accept liability of any kind in conjunction with its use.

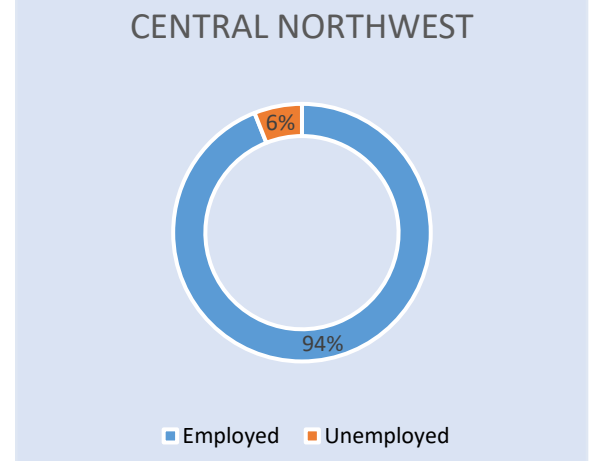


**PLANNING &
DEVELOPMENT
DEPARTMENT**

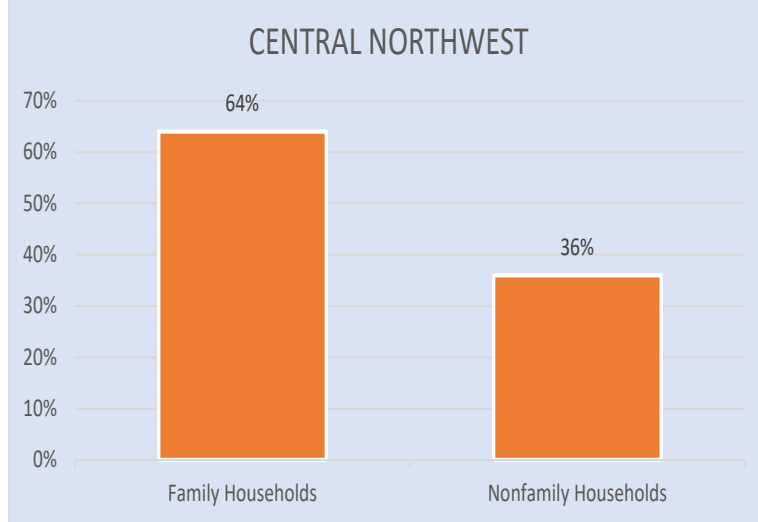
Language Spoken at Home



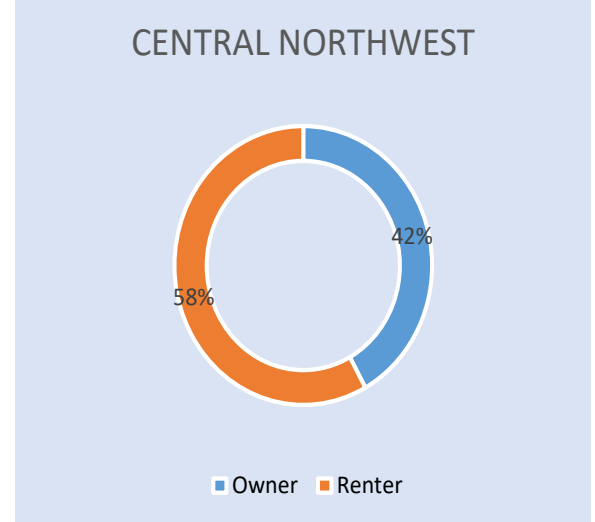
Employment Status



Family Status



Housing Occupancy



Source: U.S. Census Bureau, 2000
American Community Survey, 2015-2019 Estimates



**PLANNING &
DEVELOPMENT
DEPARTMENT**