

# SUPER Neighborhood RESOURCE ASSESSMENT



	Super Neighborhood		Houston	
Pop. characteristics	2000	2019	2000	2019
Total population	2,437	3,202	1,953,631	2,310,432
Persons per sq. mile	886	1,166	3,166	3,443
<b>Age of Population</b>				
Under 5 years	6%	8%	8%	8%
5- 17 years	22%	23%	19%	17%
18- 64 years	54%	59%	64%	65%
65 and over	18%	10%	9%	10%
<b>Ethnicity</b>				
Non Hispanic Whites	1%	6%	31%	24%
Non Hispanic Blacks	91%	41%	25%	22%
Hispanics	8%	52%	37%	45%
Non Hispanic Asians	0%	0%	6%	7%
Non Hispanic Others	1%	1%	1%	2%
<b>Income</b>				
Under \$25,000	51%	38%	33%	24%
\$25,000 to \$49,999	34%	37%	31%	24%
\$50,000 to \$99,999	14%	16%	24%	27%
Over \$100,000	2%	9%	12%	25%
<b>Median Household Income</b>	\$23,267	\$28,632	\$36,616	\$52,338
<b>Educational Status</b>				
No Diploma	40%	29%	30%	21%
High School Diploma	33%	29%	20%	23%
Some College	20%	30%	23%	23%
Bachelor's or Higher	6%	12%	27%	33%
<b>Housing and Households</b>				
Total housing units	1,073	1,395	782,378	968,704
Occupied	85%	82%	92%	89%
Vacant	15%	18%	8%	11%
Total households	909	1,144	717,945	858,374
Family households	610	650	457,549	521,891
Median Housing Value	\$32,888	\$69,886	\$79,300	\$171,800

**Description**

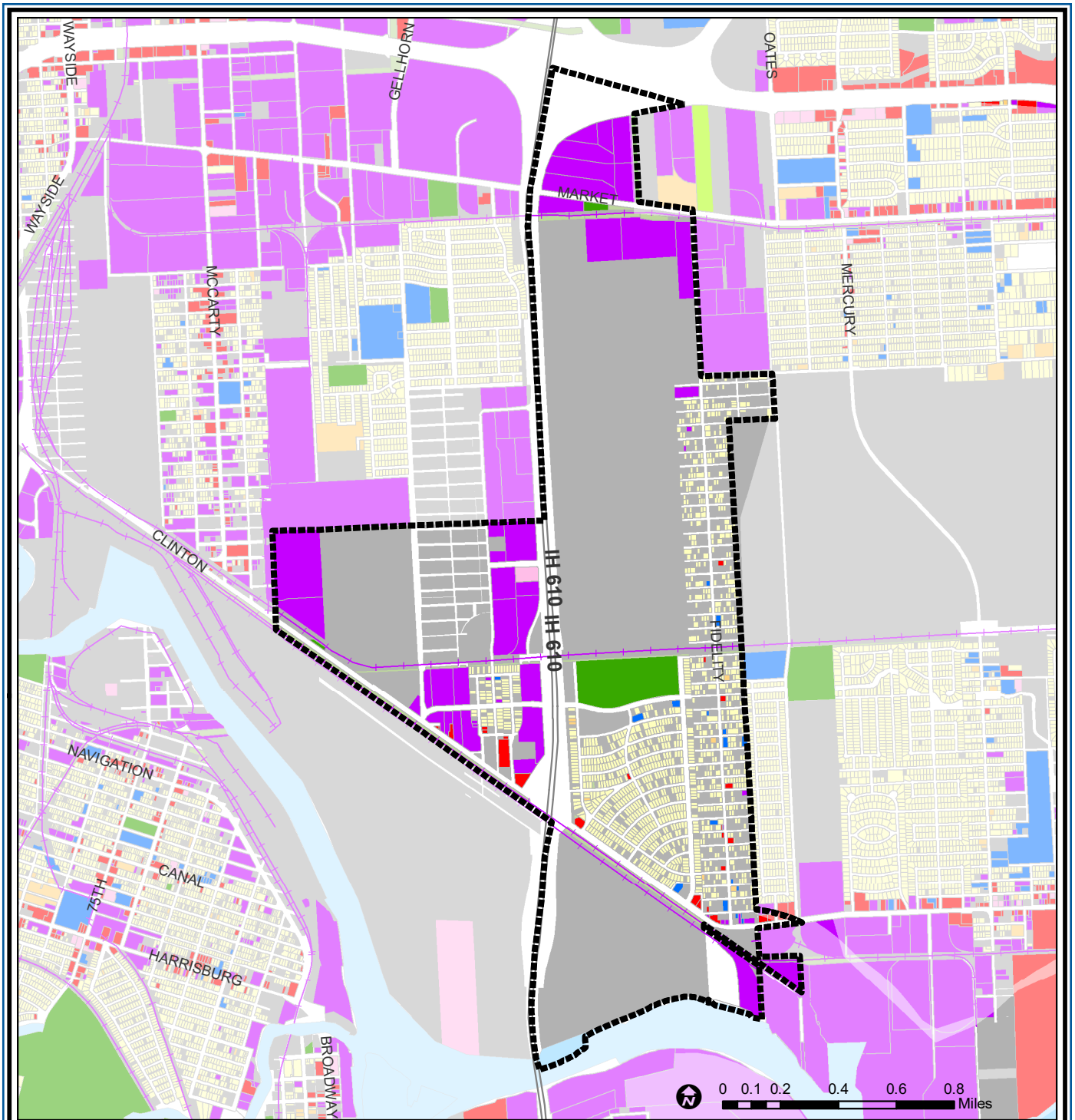
Clinton Park/Fidelity is a small community located just north of Clinton Drive, adjacent to the City of Galena Park. It is split between Houston ISD (Clinton Park) and Galena Park ISD (Fidelity), and includes a part of the Port of Houston. From its inception, this area has been almost exclusively an African-American community. Development began in the area spurred by the proximity to jobs in the Port and nearby Ship Channel industries. Large holding ponds containing materials dredged from the Houston Ship Channel are located adjacent to the residential areas.

**Highlights**

- ✓ Houston City Council Districts I, B & H
- ✓ Houston Independent School District
- ✓ Galena Park Independent School District
- ✓ 1 Police beat (includes bordering beats)
- ✓ 1,758 acres (2.75 sq. miles)



**PLANNING & DEVELOPMENT DEPARTMENT**



### Clinton Park / Tri-Community : Land Use

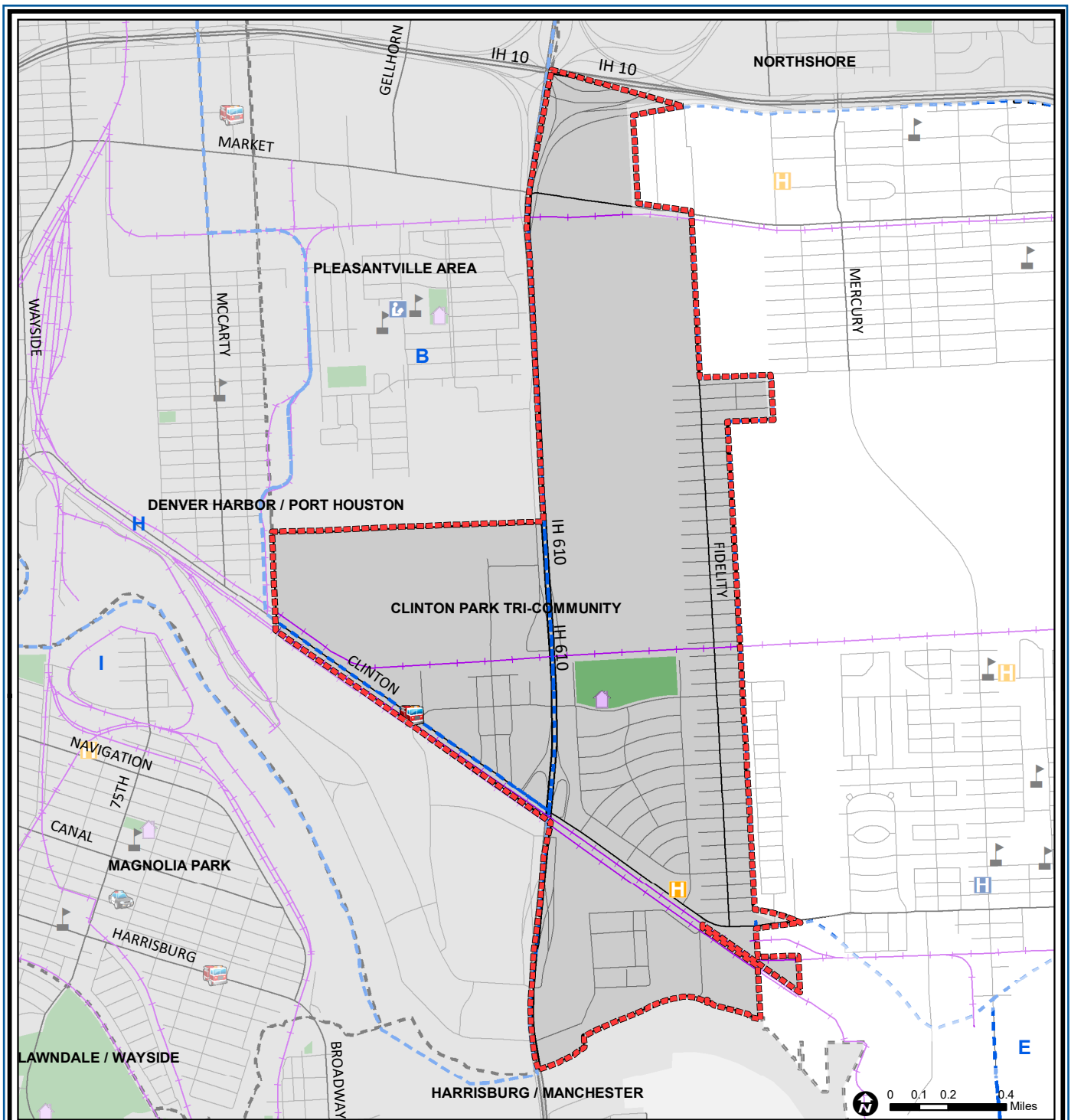
- |                             |                              |                         |
|-----------------------------|------------------------------|-------------------------|
| Freeway                     | Commercial                   | Parks and Open Space    |
| Rail Road                   | Office                       | Undeveloped             |
| Super Neighborhood Boundary | Industrial                   | Agricultural Production |
| Single-family Residential   | Public and Institutional     | Open Water              |
| Multi-family Residential    | Transportation and Utilities | Unknown                 |

Source: City of Houston GIS Database, HCAD  
Date: April 2021

This map is made available for reference purposes only and should not be substituted for a survey product. The City of Houston will not accept liability of any kind in conjunction with its use.



**PLANNING & DEVELOPMENT DEPARTMENT**



### Clinton Park Tri-Community : Public Facilities

Source: City of Houston GIS Database

Date: April 2021

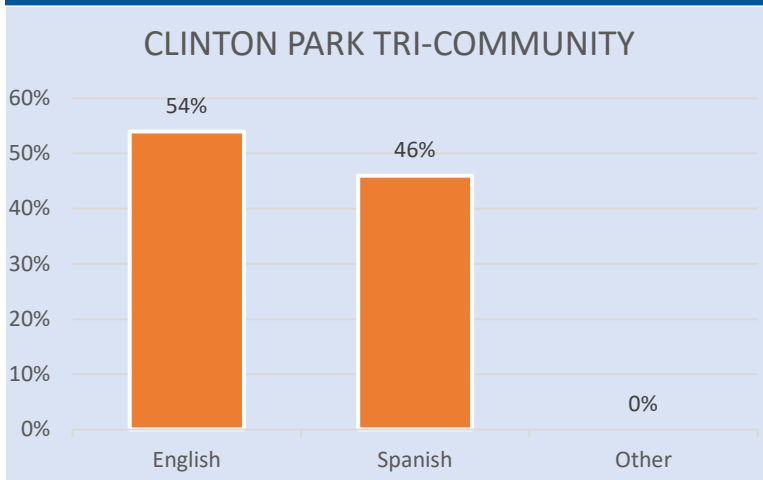
- |                             |                         |                     |
|-----------------------------|-------------------------|---------------------|
| Super Neighborhood Boundary | Airports                | Rail Road           |
| Community Centers           | Harris County Hospitals | Metro Rail Stations |
| Fire Station                | Private Hospitals       | Metro Rail Line     |
| Police Station              | Other Health Facilities | Parks               |
| School                      | Library                 | TIRZ                |

This map is made available for reference purposes only and should not be substituted for a survey product. The City of Houston will not accept liability of any kind in conjunction with its use.

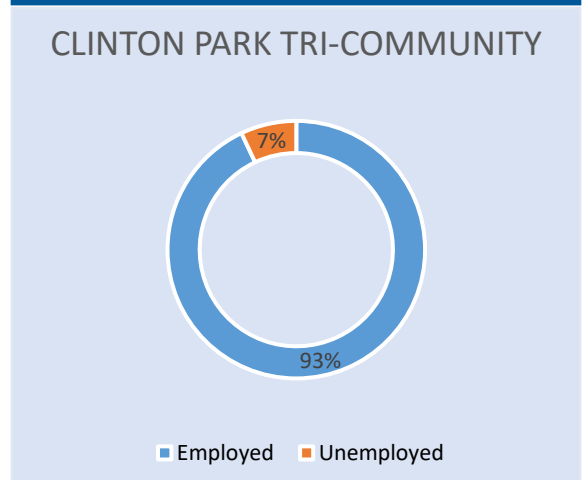


**PLANNING & DEVELOPMENT DEPARTMENT**

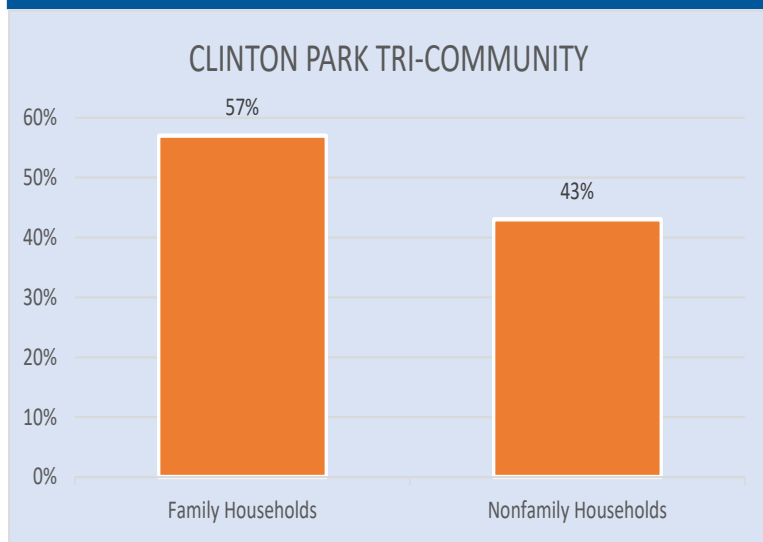
### Language Spoken at Home



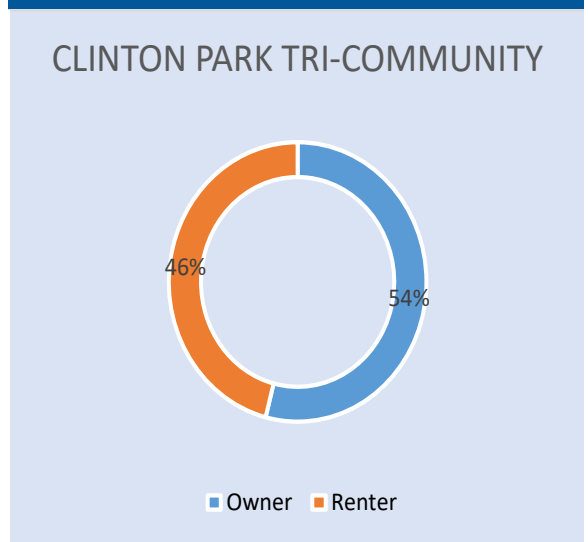
### Employment Status



### Family Status



### Housing Occupancy



Source: U.S. Census Bureau, 2000  
American Community Survey, 2015-2019 Estimates



**PLANNING &  
DEVELOPMENT  
DEPARTMENT**