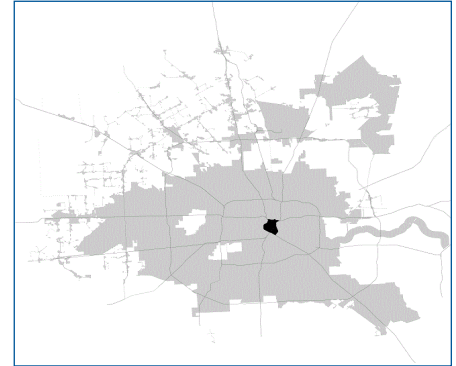


SUPER Neighborhood RESOURCE ASSESSMENT



	Super Neighborhood		Houston	
	2000	2019	2000	2019
Pop. characteristics				
Total population	12,407	15,287	1,953,631	2,310,432
Persons per sq. mile	4,578	5,643	3,166	3,443
Age of Population				
Under 5 years	1%	1%	8%	8%
5- 17 years	3%	1%	19%	17%
18- 64 years	93%	94%	64%	65%
65 and over	3%	4%	9%	10%
Ethnicity				
Non Hispanic Whites	34%	35%	31%	24%
Non Hispanic Blacks	41%	36%	25%	22%
Hispanics	23%	23%	37%	45%
Non Hispanic Asians	1%	4%	6%	7%
Non Hispanic Others	0%	2%	1%	2%
Income				
Under \$25,000	50%	15%	33%	24%
\$25,000 to \$49,999	19%	7%	31%	24%
\$50,000 to \$99,999	13%	31%	24%	27%
Over \$100,000	18%	47%	12%	25%
Median Household Income	\$38,118	\$103,557	\$36,616	\$52,338
Educational Status				
No Diploma	30%	18%	30%	21%
High School Diploma	34%	27%	20%	23%
Some College	26%	21%	23%	23%
Bachelor's or Higher	9%	34%	27%	33%
Housing and Households				
Total housing units	1,910	5,460	782,378	968,704
Occupied	73%	80%	92%	89%
Vacant	27%	20%	8%	11%
Total households	1,385	4,374	717,945	858,374
Family households	249	1,272	457,549	521,891
Median Housing Value	\$98,067	\$347,463	\$79,300	\$171,800

Description

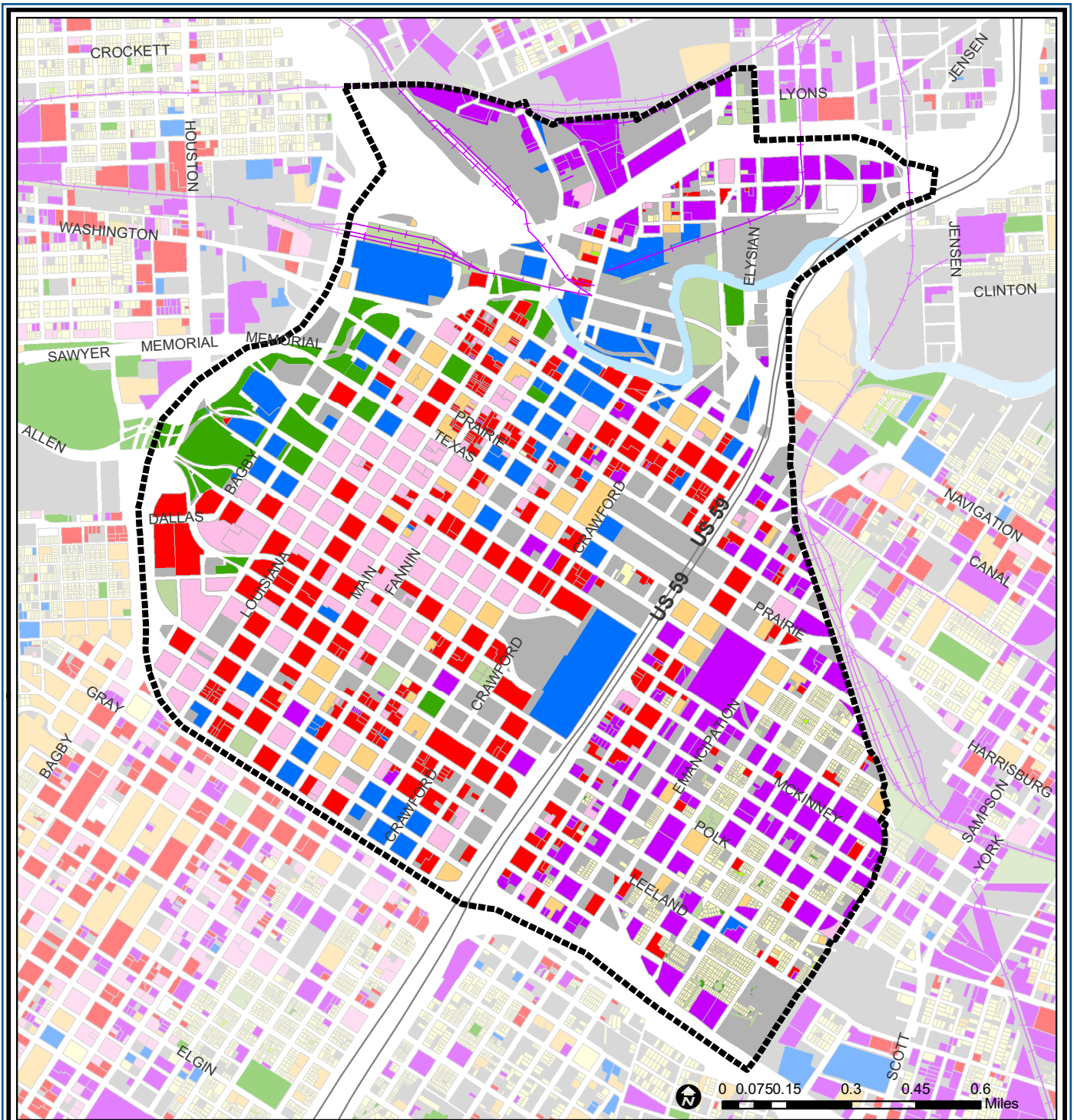
Downtown is the birthplace of Houston. The construction of a ring of freeways in the 1960s and 1970s created the modern boundaries of downtown. The area extends into a transitional warehouse and light industrial area to the southeast, a part of which was included in the Third Ward before the Gulf Freeway was built in the 1950s. This area includes Houston's first Chinatown. Downtown was once the city's retail hub, but suburban development in the 1970s and 1980s reduced its importance, even as millions of square feet of new office space added tens of thousands of new workers. Loft conversions in older, often vacant office/commercial buildings are adding a new and welcome residential element to downtown.

Highlights

- ✓ Houston City Council Districts I, H & B
- ✓ Houston Independent School District
- ✓ 6 Police beats (includes bordering beats)
- ✓ 1,733 acres (2.71 sq. miles)



**PLANNING &
DEVELOPMENT
DEPARTMENT**



Downtown : Land Use

- | | | |
|-----------------------------|------------------------------|-------------------------|
| Freeway | Commercial | Parks and Open Space |
| Rail Road | Office | Undeveloped |
| Super Neighborhood Boundary | Industrial | Agricultural Production |
| Single-family Residential | Public and Institutional | Open Water |
| Multi-family Residential | Transportation and Utilities | Unknown |

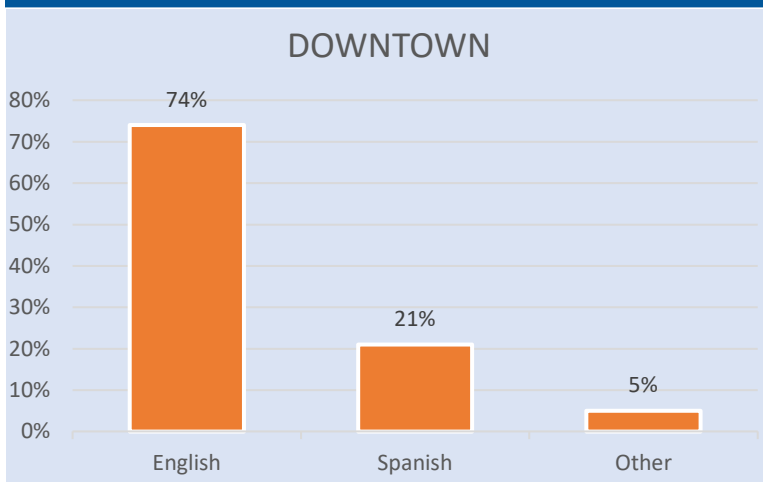
Source: City of Houston GIS Database, HCAD
 Date: April 2021

This map is made available for reference purposes only and should not be substituted for a survey product. The City of Houston will not accept liability of any kind in conjunction with its use.

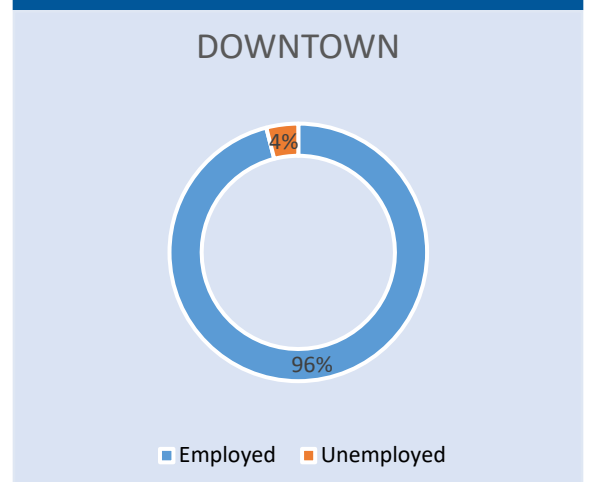


PLANNING & DEVELOPMENT DEPARTMENT

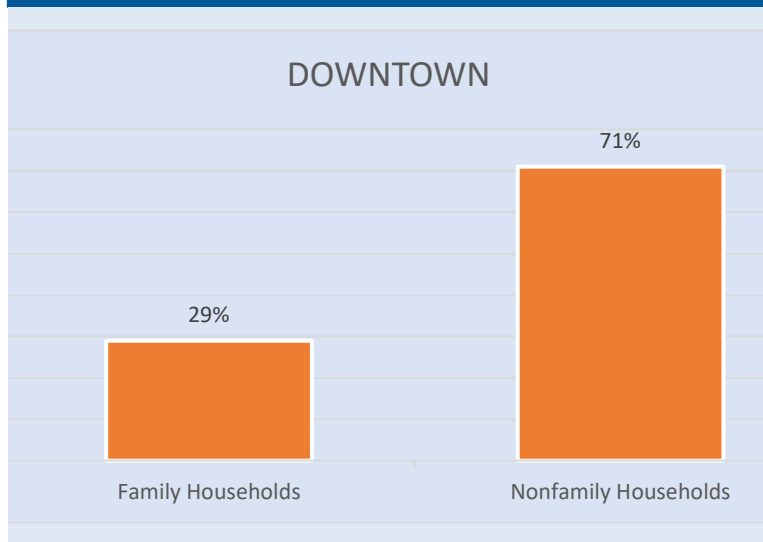
Language Spoken at Home



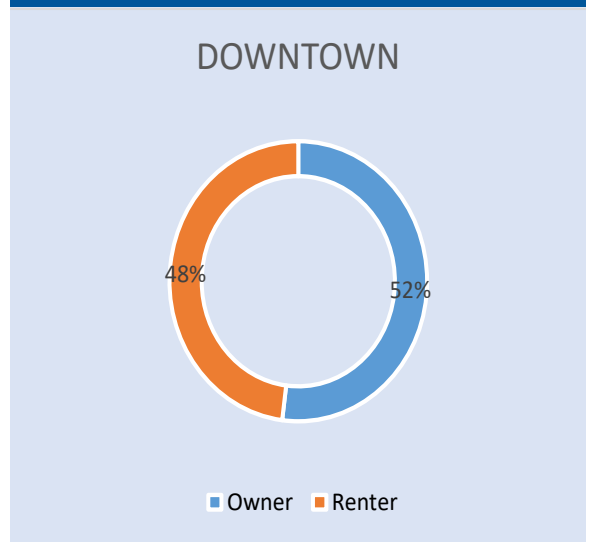
Employment Status



Family Status



Housing Occupancy



Source: U.S. Census Bureau, 2000
American Community Survey, 2015-2019 Estimates



**PLANNING &
DEVELOPMENT
DEPARTMENT**