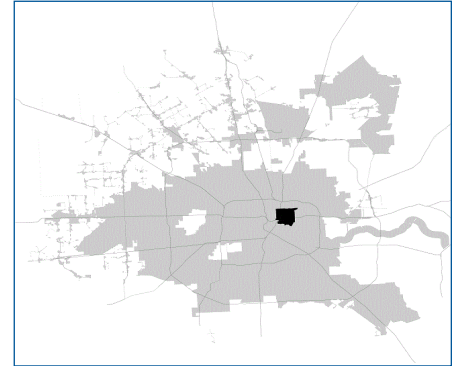


SUPER Neighborhood RESOURCE ASSESSMENT



	Super Neighborhood		Houston	
	2000	2019	2000	2019
Pop. characteristics				
Total population	22,211	19,391	1,953,631	2,310,432
Persons per sq. mile	4,451	3,887	3,166	3,443
Age of Population				
Under 5 years	9%	7%	8%	8%
5- 17 years	24%	18%	19%	17%
18- 64 years	55%	64%	64%	65%
65 and over	12%	11%	9%	10%
Ethnicity				
Non Hispanic Whites	1%	4%	31%	24%
Non Hispanic Blacks	63%	43%	25%	22%
Hispanics	35%	51%	37%	45%
Non Hispanic Asians	0%	1%	6%	7%
Non Hispanic Others	0%	1%	1%	2%
Income				
Under \$25,000	67%	44%	33%	24%
\$25,000 to \$49,999	21%	29%	31%	24%
\$50,000 to \$99,999	10%	19%	24%	27%
Over \$100,000	2%	8%	12%	25%
Median Household Income	\$14,720	\$27,668	\$36,616	\$52,338
Educational Status				
No Diploma	58%	32%	30%	21%
High School Diploma	24%	34%	20%	23%
Some College	14%	22%	23%	23%
Bachelor's or Higher	4%	12%	27%	33%
Housing and Households				
Total housing units	8,756	8,376	782,378	968,704
Occupied	87%	84%	92%	89%
Vacant	13%	16%	8%	11%
Total households	7,591	7,060	717,945	858,374
Family households	4,927	4,048	457,549	521,891
Median Housing Value	\$28,977	\$90,165	\$79,300	\$171,800

Description

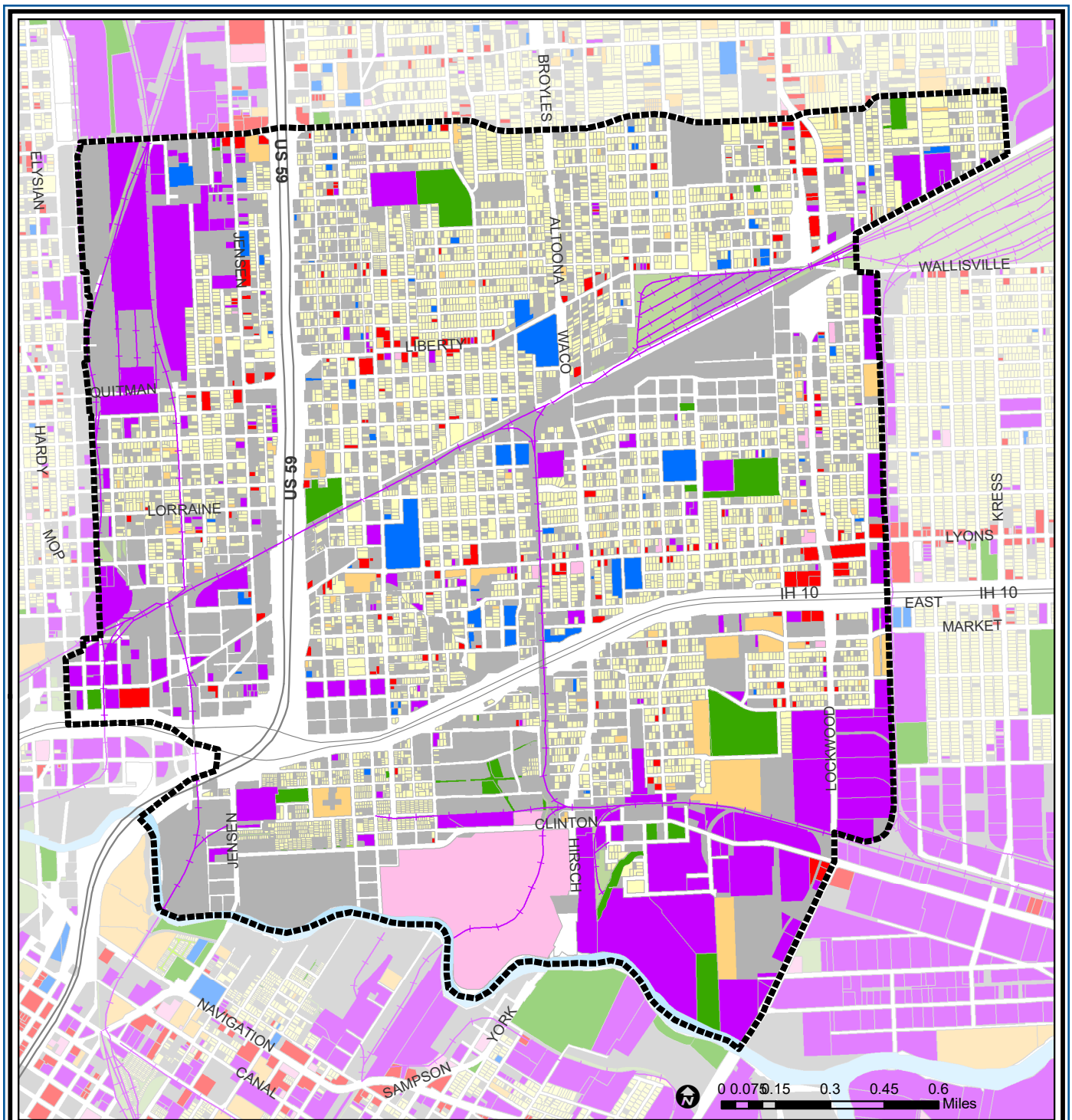
Greater Fifth Ward has its origins on the north bank of Buffalo Bayou across from the original town site for Houston. Originally a multi-racial community, Fifth Ward quickly became one of the centers of Houston's African-American community. Its commercial streets, especially Lyons and Jensen, provided retail outlets and entertainment for the residents of the small wood frame homes that predominated in the area. Small clusters of brick homes identified a small middle class population. Many original, sub-standard housing units have been demolished over the past two decades, but a recent revival of commercial activity and home construction is now filling these empty lots.

Highlights

- ✓ Houston City Council Districts B & H
- ✓ Houston Independent School District
- ✓ 6 Police beats (includes bordering beats)
- ✓ 3,192 acres (4.99 sq. miles)



PLANNING & DEVELOPMENT DEPARTMENT



Greater Fifth Ward : Land Use

- | | | |
|-----------------------------|------------------------------|-------------------------|
| Freeway | Commercial | Parks and Open Space |
| Rail Road | Office | Undeveloped |
| Super Neighborhood Boundary | Industrial | Agricultural Production |
| Single-family Residential | Public and Institutional | Open Water |
| Multi-family Residential | Transportation and Utilities | Unknown |

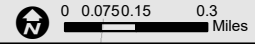
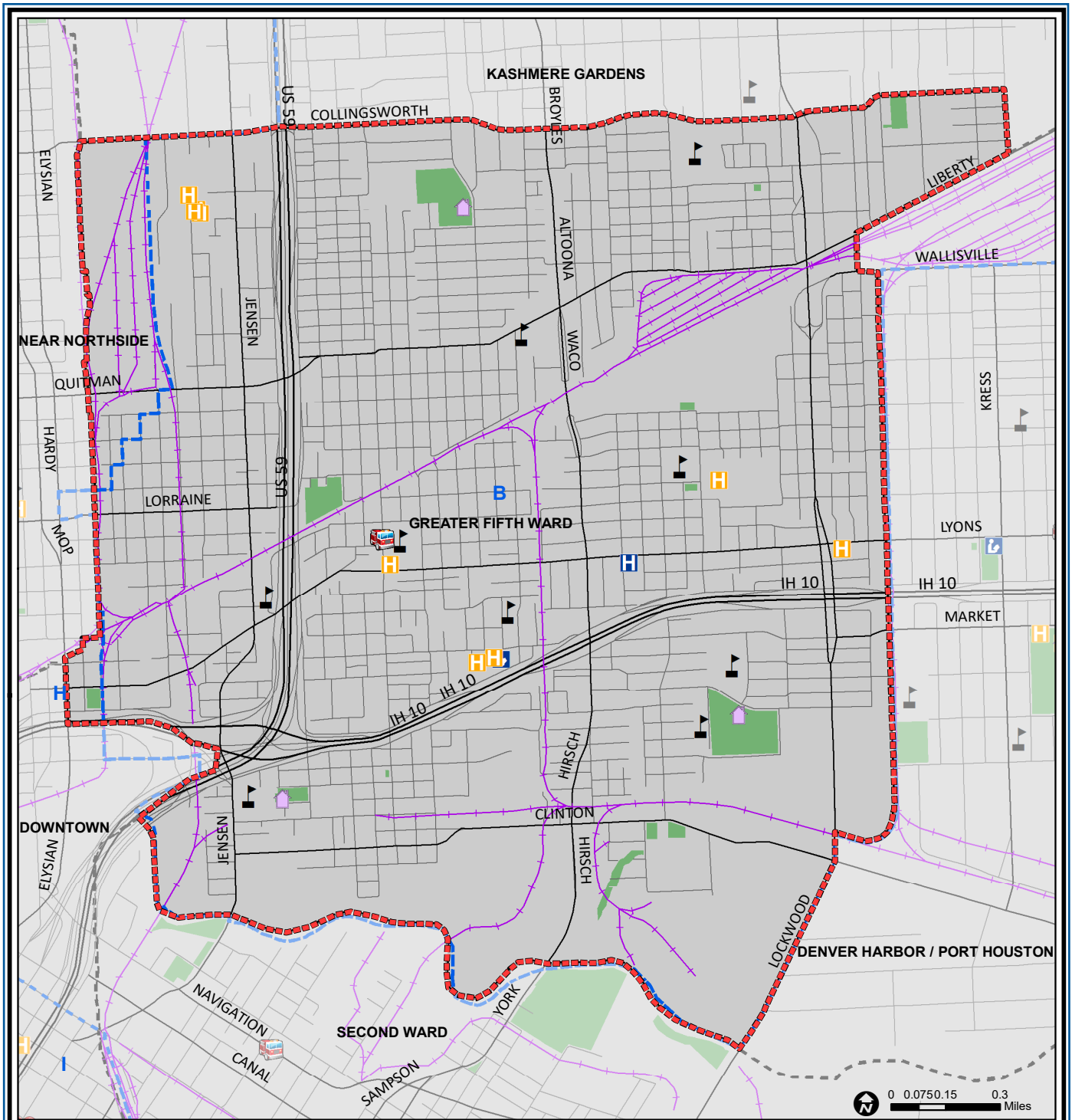
Source: City of Houston GIS Database, HCAD

Date: April 2021

This map is made available for reference purposes only and should not be substituted for a survey product. The City of Houston will not accept liability of any kind in conjunction with its use.



PLANNING & DEVELOPMENT DEPARTMENT



Greater Fifth Ward : Public Facilities

- Super Neighborhood Boundary
- Community Centers
- Fire Station
- Police Station
- School
- Airports
- Harris County Hospitals
- Private Hospitals
- Other Health Facilities
- Library
- Rail Road
- Metro Rail Stations
- Metro Rail Line
- Parks
- TIRZ

Source: City of Houston GIS Database

Date: April 2021

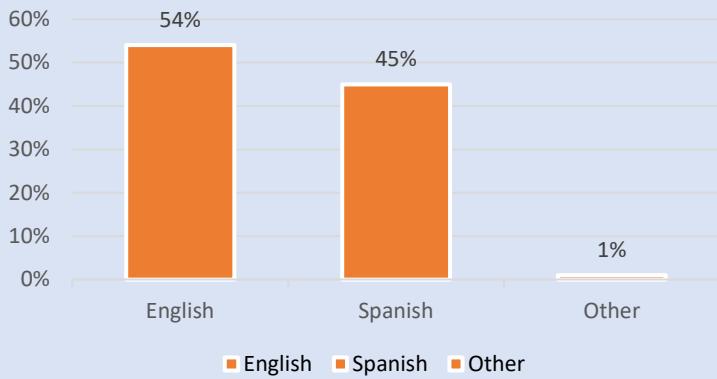
This map is made available for reference purposes only and should not be substituted for a survey product. The City of Houston will not accept liability of any kind in conjunction with its use.



PLANNING & DEVELOPMENT DEPARTMENT

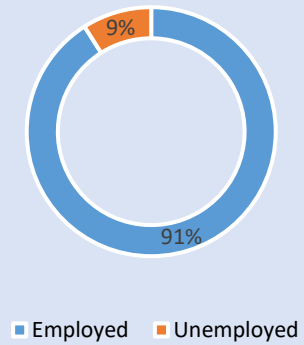
Language Spoken at Home

GREATER FIFTH WARD



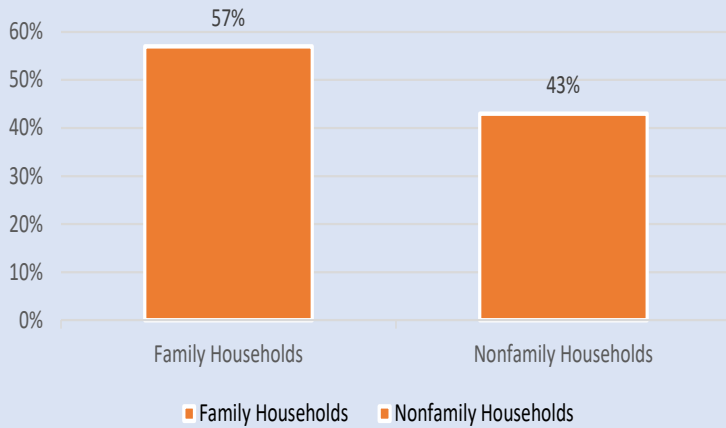
Employment Status

GREATER FIFTH WARD



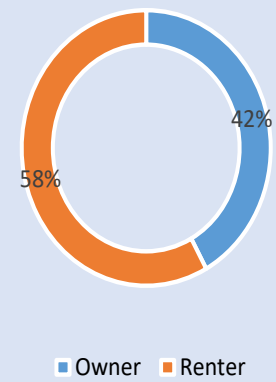
Family Status

GREATER FIFTH WARD



Housing Occupancy

GREATER FIFTH WARD



Source: U.S. Census Bureau, 2000
American Community Survey, 2015-2019 Estimates



**PLANNING &
DEVELOPMENT
DEPARTMENT**