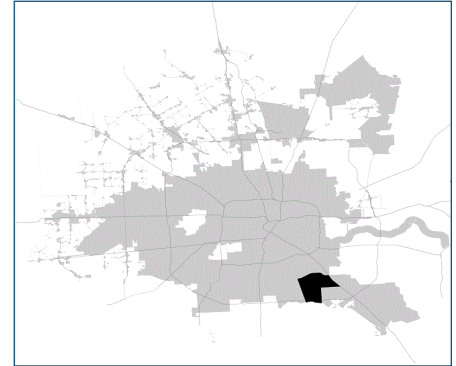


# SUPER Neighborhood RESOURCE ASSESSMENT



	Super Neighborhood		Houston	
	2000	2019	2000	2019
<b>Pop. characteristics</b>				
Total population	41,198	26,909	1,953,631	2,310,432
Persons per sq. mile	2,549	2,227	3,166	3,443
<b>Age of Population</b>				
Under 5 years	11%	8%	8%	8%
5- 17 years	21%	22%	19%	17%
18- 64 years	62%	63%	64%	65%
65 and over	7%	7%	9%	10%
<b>Ethnicity</b>				
Non Hispanic Whites	17%	6%	31%	24%
Non Hispanic Blacks	25%	12%	25%	22%
Hispanics	51%	77%	37%	45%
Non Hispanic Asians	6%	3%	6%	7%
Non Hispanic Others	1%	1%	1%	2%
<b>Income</b>				
Under \$25,000	37%	20%	33%	24%
\$25,000 to \$49,999	35%	29%	31%	24%
\$50,000 to \$99,999	22%	36%	24%	27%
Over \$100,000	6%	15%	12%	25%
<b>Median Household Income</b>	\$32,601	\$48,676	\$36,616	\$52,338
<b>Educational Status</b>				
No Diploma	39%	35%	30%	21%
High School Diploma	25%	32%	20%	23%
Some College	24%	25%	23%	23%
Bachelor's or Higher	12%	8%	27%	33%
<b>Housing and Households</b>				
Total housing units	14,799	8,331	782,378	968,704
Occupied	94%	92%	92%	89%
Vacant	6%	8%	8%	11%
Total households	13,876	7,681	717,945	858,374
Family households	10,096	6,077	457,549	521,891
Median Housing Value	\$70,021	\$110,739	\$79,300	\$171,800

**Description**

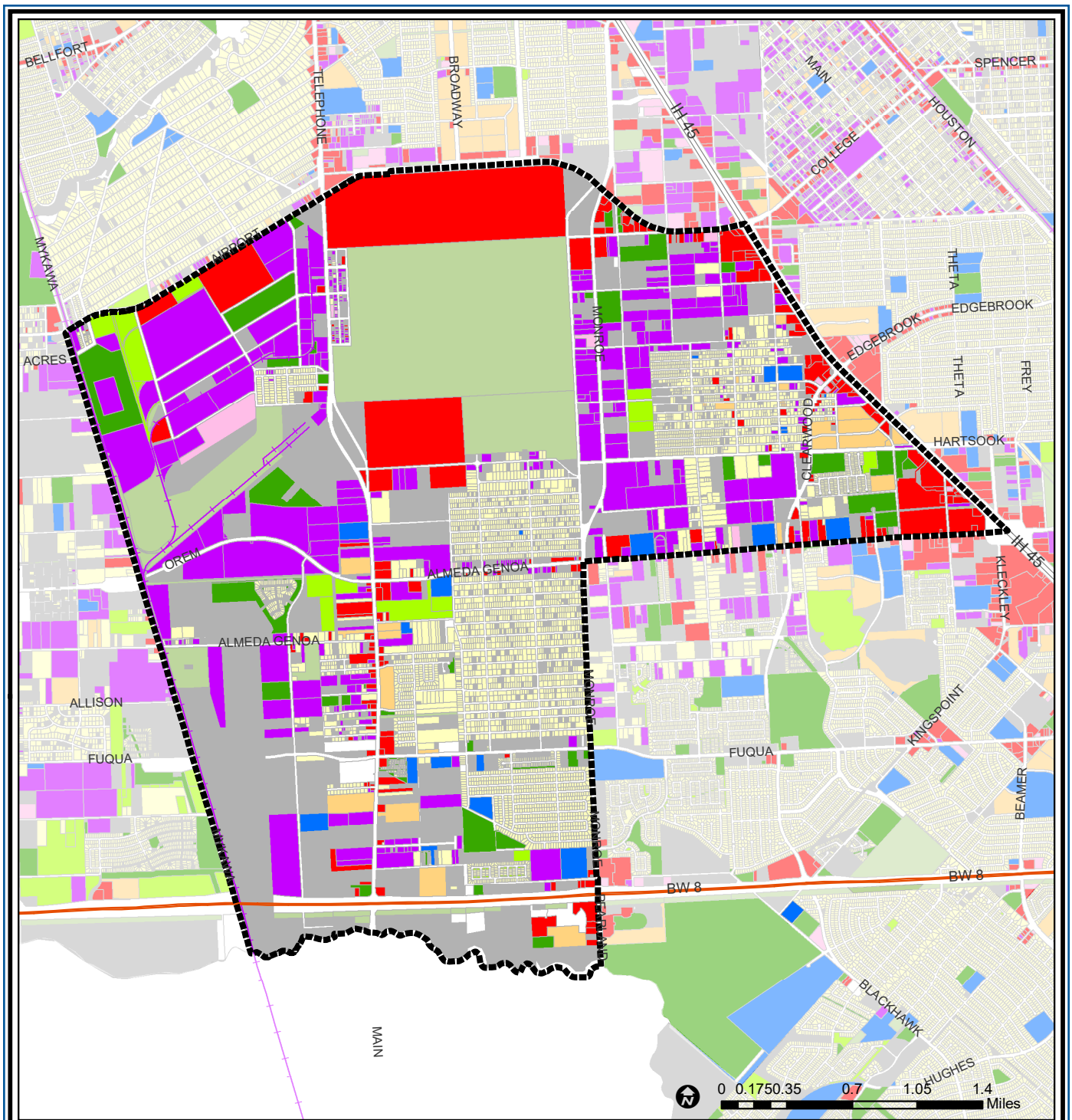
The Greater Hobby Area takes its name from Hobby Airport, located at the center of this part of southeast Houston. A rail line at the western edge of the community provides access for a number of large industrial facilities. Sims Bayou, along the northern boundary, attracted development of single-family homes in the Garden Villas subdivision before World War II and in the Glenbrook Valley subdivision during the 1950s. Gulf Freeway Oaks is a similar subdivision of homes located close to I-45, an eastern boundary of the area. East Haven and Skyscraper Shadows, located to the east and south of the airport, respectively, still have many empty lots and a variety of housing styles. Gulf Meadows is located close to Clear Creek, the southern edge of the community.

**Highlights**

- ✓ Houston City Council Districts I & D
- ✓ Houston Independent School District
- ✓ Pasadena Independent School District
- ✓ Pearland Independent School District
- ✓ 7 Police beats (includes bordering beats)
- ✓ 7,731 acres (12.08 sq. miles)



**PLANNING &  
DEVELOPMENT  
DEPARTMENT**



## Greater Hobby Area : Land Use

- |                             |                              |                         |
|-----------------------------|------------------------------|-------------------------|
| Freeway                     | Commercial                   | Parks and Open Space    |
| Rail Road                   | Office                       | Undeveloped             |
| Super Neighborhood Boundary | Industrial                   | Agricultural Production |
| Single-family Residential   | Public and Institutional     | Open Water              |
| Multi-family Residential    | Transportation and Utilities | Unknown                 |

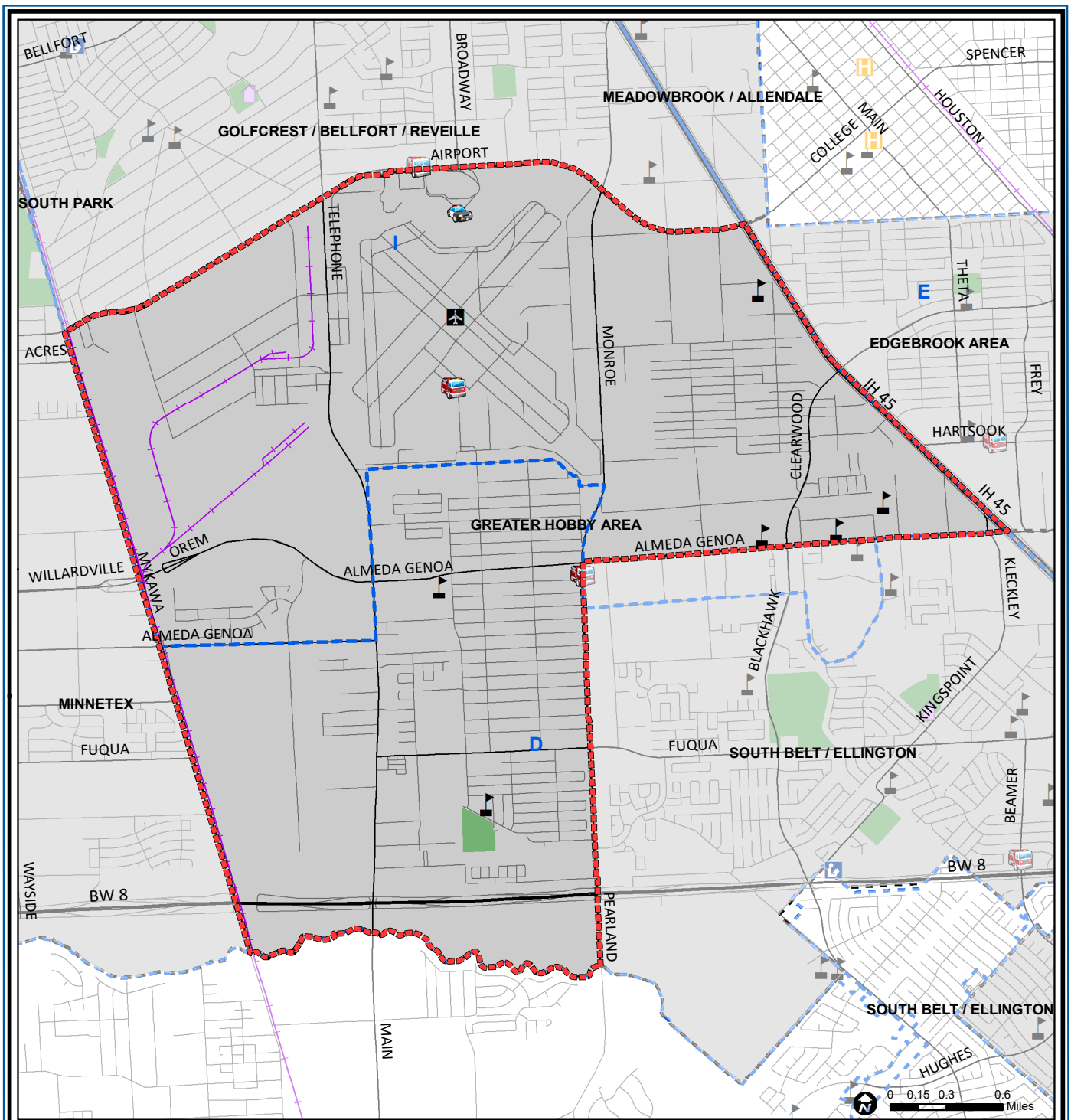
Source: City of Houston GIS Database, HCAD

Date: April 2021

This map is made available for reference purposes only and should not be substituted for a survey product. The City of Houston will not accept liability of any kind in conjunction with its use.



**PLANNING & DEVELOPMENT DEPARTMENT**



### Greater Hobby Area : Public Facilities

- |                             |                         |                     |
|-----------------------------|-------------------------|---------------------|
| Super Neighborhood Boundary | Airports                | Rail Road           |
| Community Centers           | Harris County Hospitals | Metro Rail Stations |
| Fire Station                | Private Hospitals       | Metro Rail Line     |
| Police Station              | Other Health Facilities | Parks               |
| School                      | Library                 | TIRZ                |

Source: City of Houston GIS Database

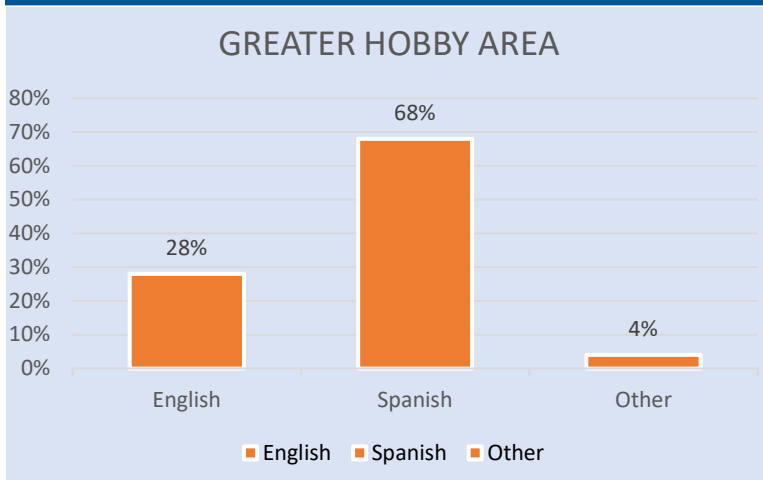
Date: April 2021

This map is made available for reference purposes only and should not be substituted for a survey product. The City of Houston will not accept liability of any kind in conjunction with its use.

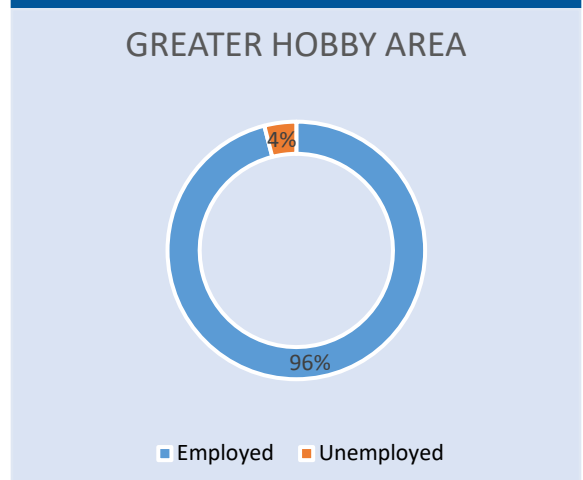


**PLANNING & DEVELOPMENT DEPARTMENT**

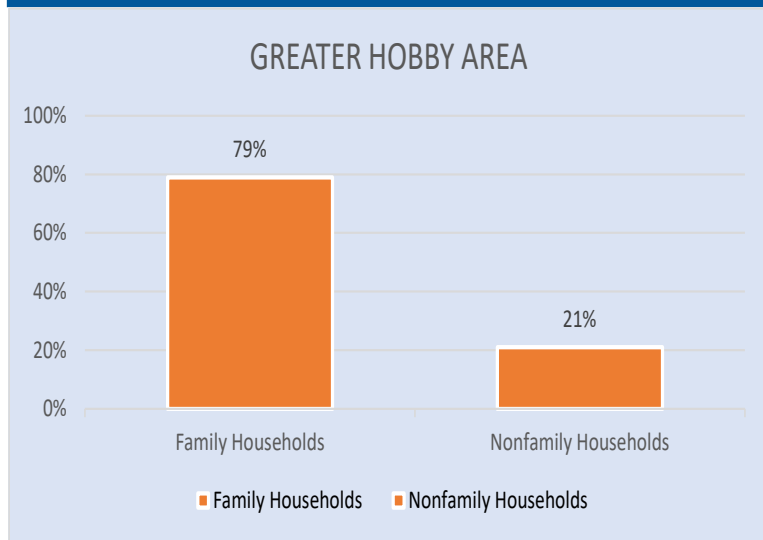
### Language Spoken at Home



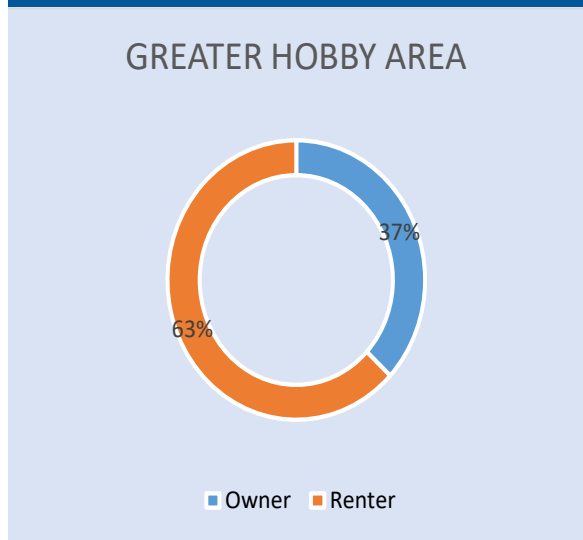
### Employment Status



### Family Status



### Housing Occupancy



Source: U.S. Census Bureau, 2000  
American Community Survey, 2015-2019 Estimates



**PLANNING &  
DEVELOPMENT  
DEPARTMENT**