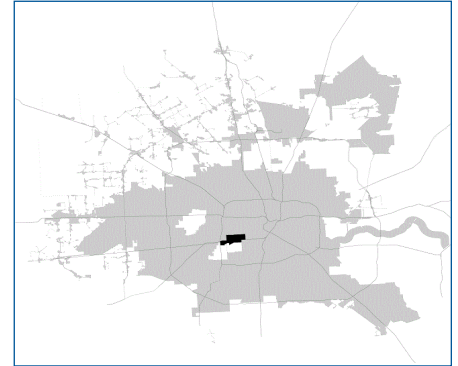


# SUPER Neighborhood RESOURCE ASSESSMENT



	Super Neighborhood		Houston	
	2000	2019	2000	2019
<b>Pop. characteristics</b>				
Total population	16,166	24,673	1,953,631	2,310,432
Persons per sq. mile	5,443	8,312	3,166	3,443
<b>Age of Population</b>				
Under 5 years	3%	4%	8%	8%
5- 17 years	4%	7%	19%	17%
18- 64 years	81%	78%	64%	65%
65 and over	11%	11%	9%	10%
<b>Ethnicity</b>				
Non Hispanic Whites	82%	63%	31%	24%
Non Hispanic Blacks	3%	6%	25%	22%
Hispanics	9%	15%	37%	45%
Non Hispanic Asians	5%	14%	6%	7%
Non Hispanic Others	2%	2%	1%	2%
<b>Income</b>				
Under \$25,000	20%	11%	33%	24%
\$25,000 to \$49,999	26%	14%	31%	24%
\$50,000 to \$99,999	31%	34%	24%	27%
Over \$100,000	23%	41%	12%	25%
<b>Median Household Income</b>	\$55,019	\$91,150	\$36,616	\$52,338
<b>Educational Status</b>				
No Diploma	3%	1%	30%	21%
High School Diploma	7%	5%	20%	23%
Some College	21%	16%	23%	23%
Bachelor's or Higher	69%	78%	27%	33%
<b>Housing and Households</b>				
Total housing units	11,788	16,512	782,378	968,704
Occupied	89%	88%	92%	89%
Vacant	11%	12%	8%	11%
Total households	10,509	14,529	717,945	858,374
Family households	2,918	5,204	457,549	521,891
Median Housing Value	156,174	\$442,565	\$79,300	\$171,800

**Description**

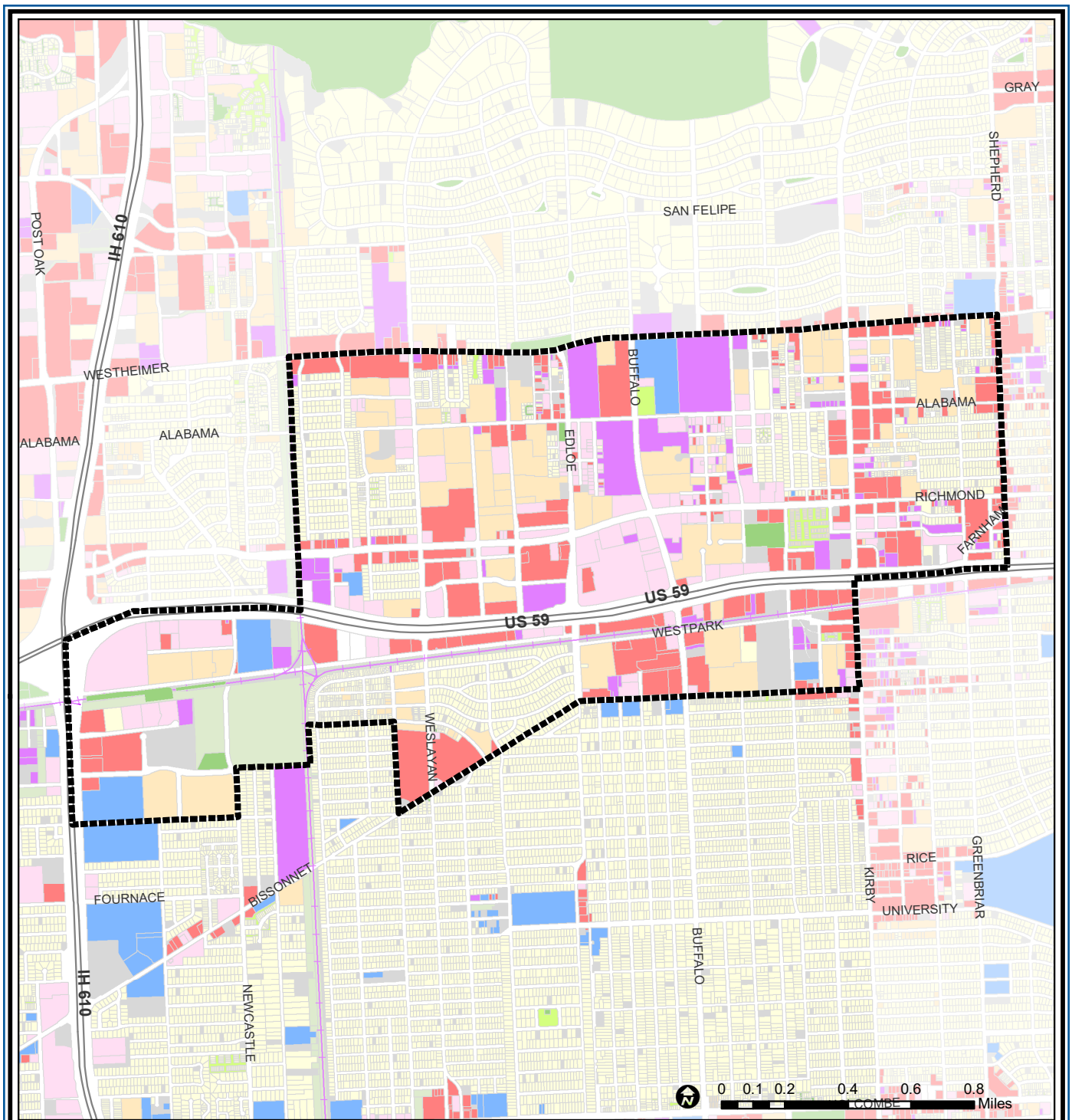
The Greenway/Upper Kirby Area is located inside Loop 610, south of Westheimer Road and bound on the east by Shepherd. The Southwest Freeway runs through the southernmost part of this area. Greenway Plaza, a major activity and employment center developed in the late 1970s, forms part of this neighborhood. Kirby Drive is one of the major commercial thoroughfares in this neighborhood. The area is a mixture of single and multi-family residential uses with office and commercial located along major thoroughfares and the Southwest Freeway feeder roads.

**Highlights**

- ✓ Houston City Council Districts C & G
- ✓ Houston Independent School District
- ✓ 6 Police beats (includes bordering beats)
- ✓ 1,899 acres (2.97 sq. miles)



**PLANNING & DEVELOPMENT DEPARTMENT**



## Greenway / Upper Kirby Area : Land Use

Freeway	Commercial	Parks and Open Space
Rail Road	Office	Undeveloped
Super Neighborhood Boundary	Industrial	Agricultural Production
Single-family Residential	Public and Institutional	Open Water
Multi-family Residential	Transportation and Utilities	Unknown

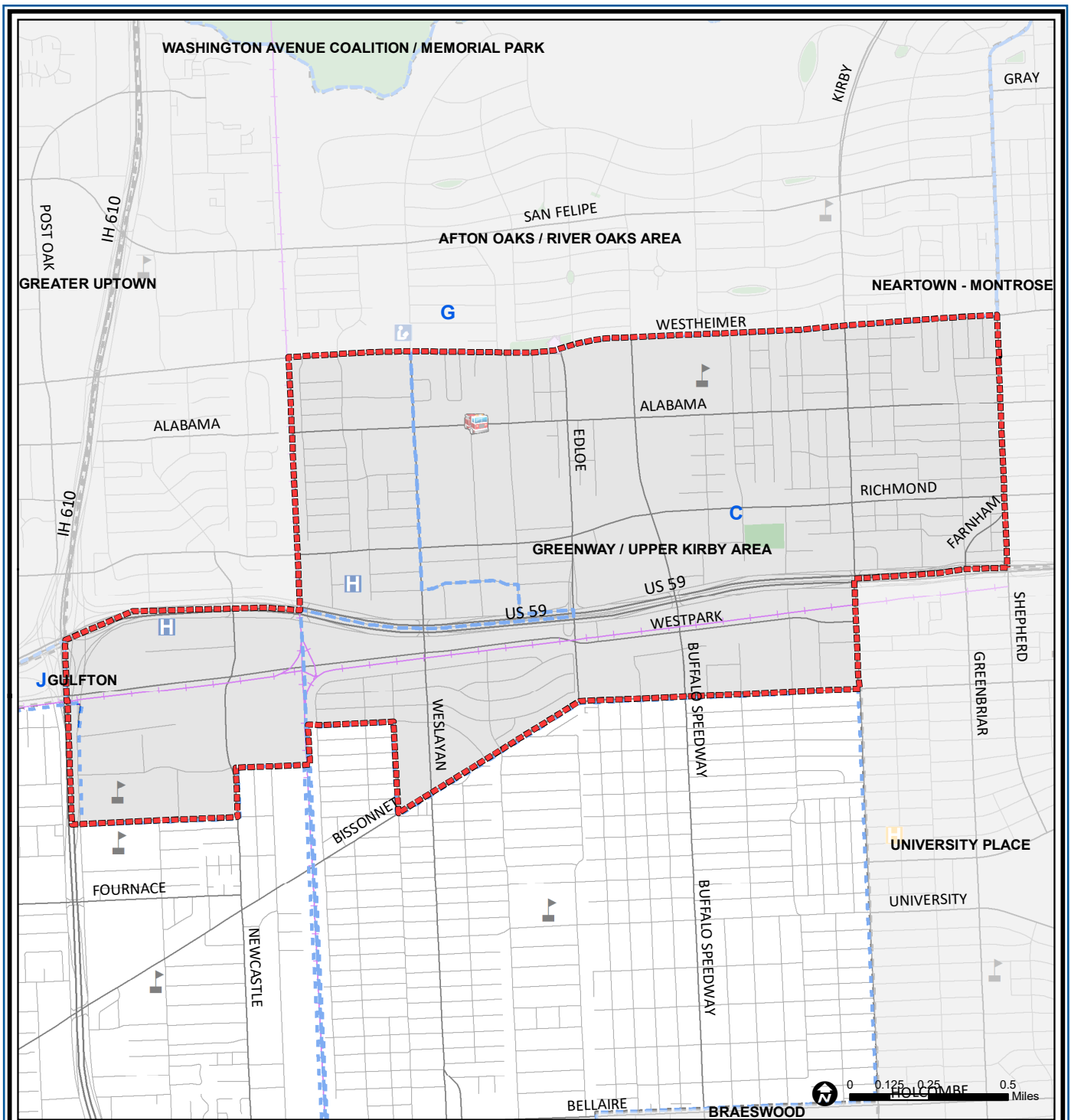
Source: City of Houston GIS Database, HCAD

Date: April 2021

This map is made available for reference purposes only and should not be substituted for a survey product. The City of Houston will not accept liability of any kind in conjunction with its use.



**PLANNING & DEVELOPMENT DEPARTMENT**



## Greenway / Upper Kirby Area : Public Facilities

Source: City of Houston GIS Database

Date: April 2021

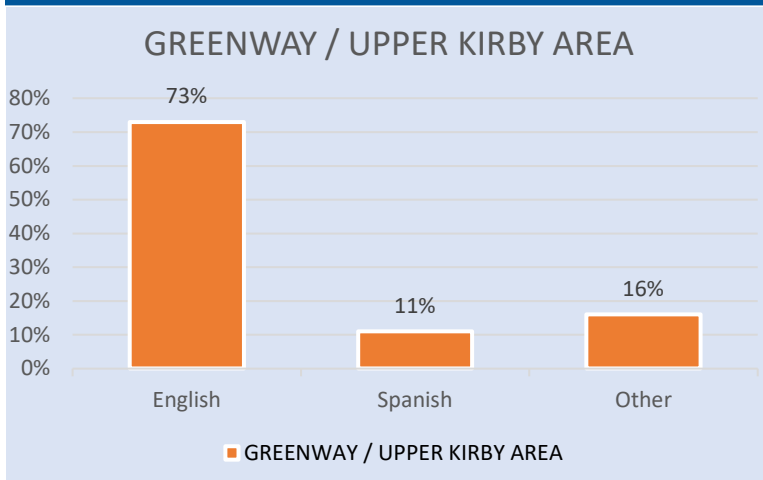
- |                             |                         |                     |
|-----------------------------|-------------------------|---------------------|
| Super Neighborhood Boundary | Airports                | Rail Road           |
| Community Centers           | Harris County Hospitals | Metro Rail Stations |
| Fire Station                | Private Hospitals       | Metro Rail Line     |
| Police Station              | Other Health Facilities | Parks               |
| School                      | Library                 | TIRZ                |

This map is made available for reference purposes only and should not be substituted for a survey product. The City of Houston will not accept liability of any kind in conjunction with its use.

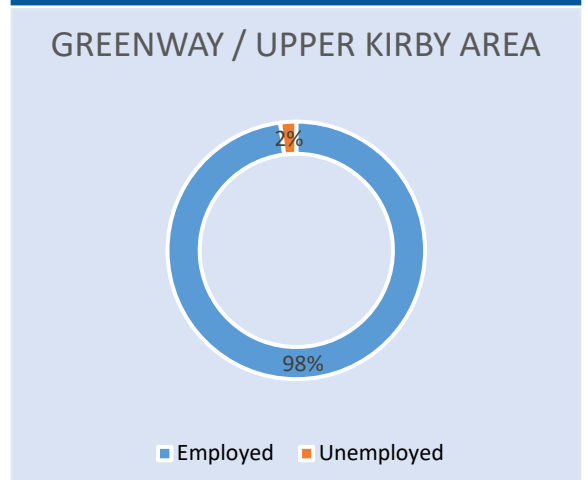


**PLANNING & DEVELOPMENT DEPARTMENT**

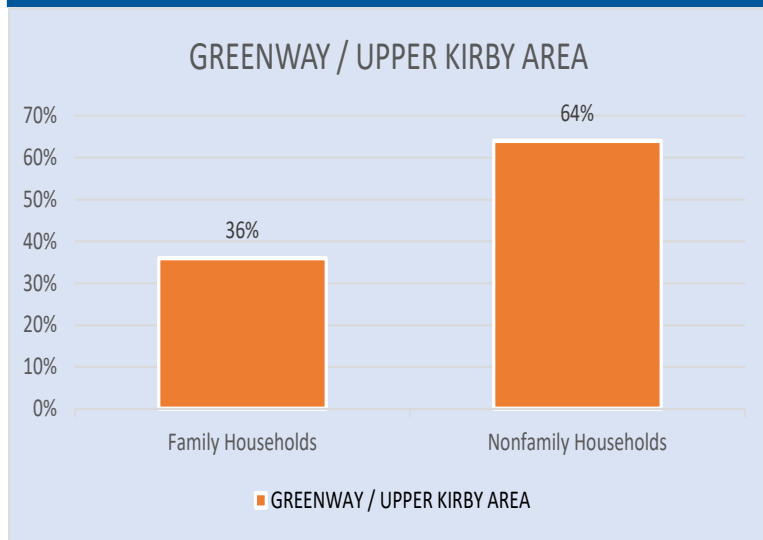
### Language Spoken at Home



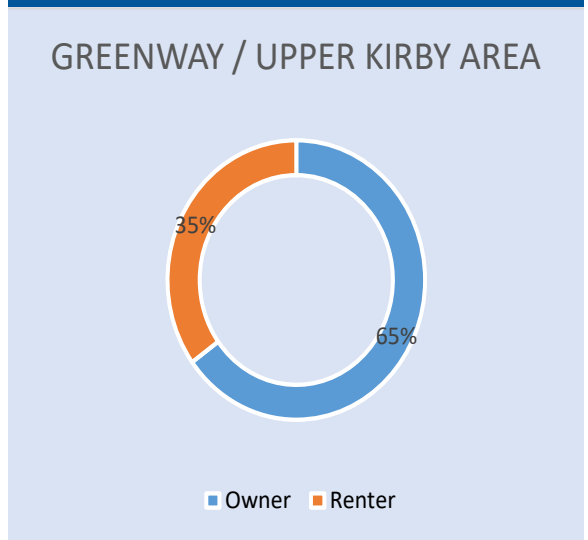
### Employment Status



### Family Status



### Housing Occupancy



Source: U.S. Census Bureau, 2000  
American Community Survey, 2015-2019 Estimates



**PLANNING &  
DEVELOPMENT  
DEPARTMENT**