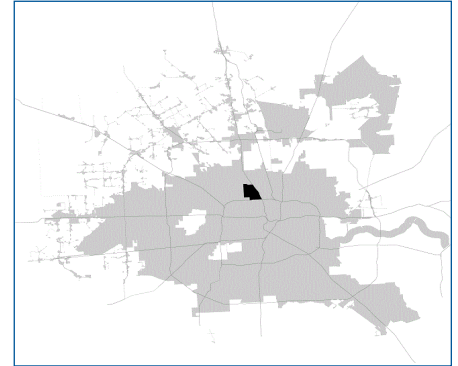


SUPER

Neighborhood

RESOURCE ASSESSMENT



	Super Neighborhood		Houston	
Pop. characteristics	2000	2019	2000	2019
Total population	14,206	14,340	1,953,631	2,310,432
Persons per sq. mile	4,178	4,198	3,166	3,443
Age of Population				
Under 5 years	8%	10%	8%	8%
5- 17 years	19%	20%	19%	17%
18- 64 years	59%	58%	64%	65%
65 and over	13%	12%	9%	10%
Ethnicity				
Non Hispanic Whites	7%	7%	31%	24%
Non Hispanic Blacks	60%	33%	25%	22%
Hispanics	32%	59%	37%	45%
Non Hispanic Asians	0%	1%	6%	7%
Non Hispanic Others	1%	0%	1%	2%
Income				
Under \$25,000	54%	39%	33%	24%
\$25,000 to \$49,999	31%	34%	31%	24%
\$50,000 to \$99,999	13%	19%	24%	27%
Over \$100,000	2%	8%	12%	25%
Median Household Income	\$22,598	\$31,861	\$36,616	\$52,338
Educational Status				
No Diploma	44%	35%	30%	21%
High School Diploma	30%	31%	20%	23%
Some College	18%	23%	23%	23%
Bachelor's or Higher	9%	11%	27%	33%
Housing and Households				
Total housing units	5,420	5,608	782,378	968,704
Occupied	88%	87%	92%	89%
Vacant	12%	13%	8%	11%
Total households	4,772	4,874	717,945	858,374
Family households	3,278	2,957	457,549	521,891
Median Housing Value	\$42,508	\$103,269	\$79,300	\$171,800

Description

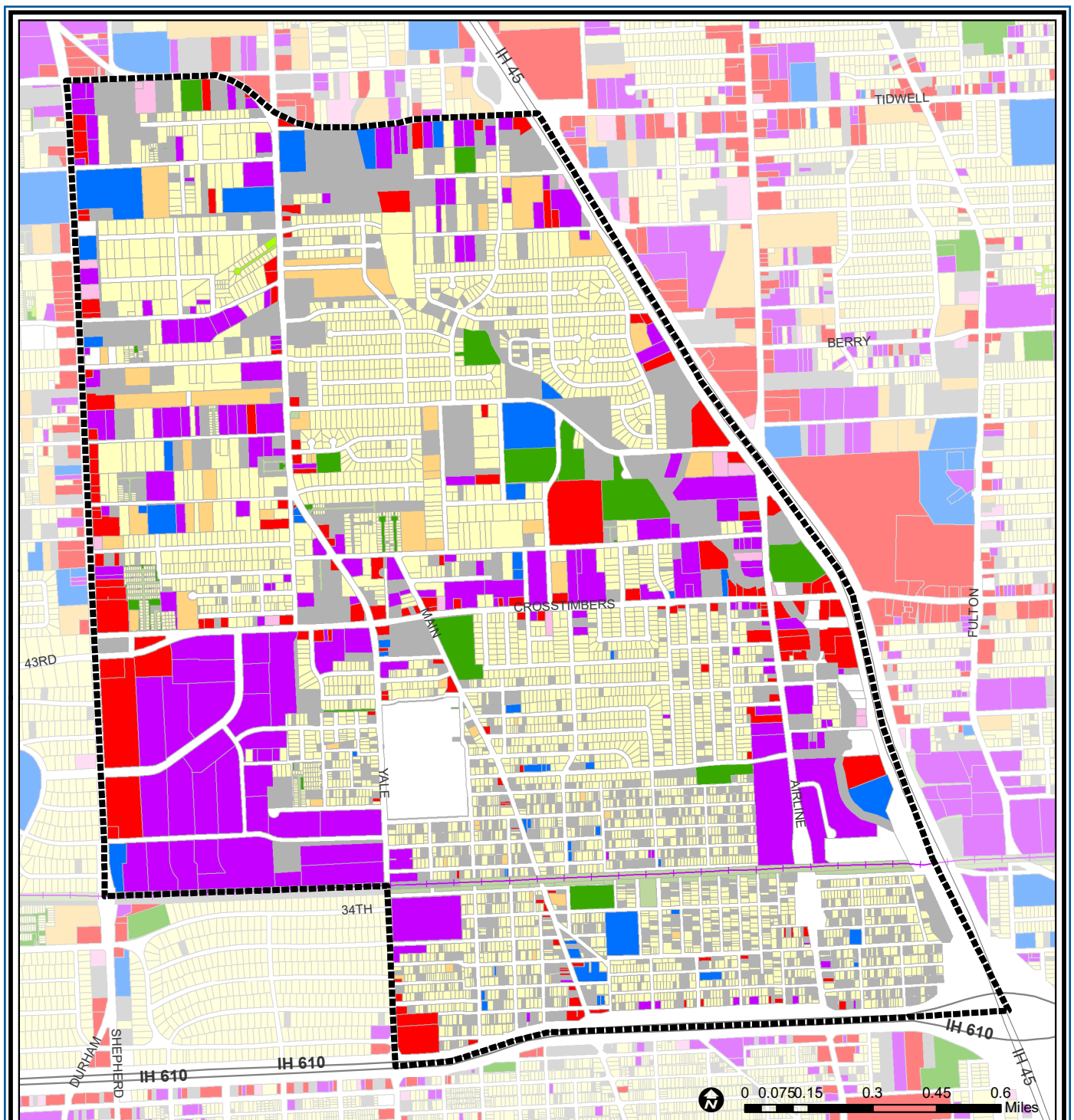
Independence Heights is an historical community located north of Loop 610 and west of I-45. After World War I, Independence Heights was the first town incorporated in Texas by African-Americans. It was consolidated with Houston in 1929 and remains a predominantly African-American neighborhood. Population growth after World War II led to the expansion of the community to the north. The Burlington Northern railroad tracks run through the southern section of the community.

Highlights

- ✓ Houston City Council District H
- ✓ Houston Independent School District
- ✓ 4 Police beats (includes bordering beats)
- ✓ 2,186 acres (3.4 sq. miles)



**PLANNING &
DEVELOPMENT
DEPARTMENT**



Independence Heights : Land Use

Freeway	Commercial	Parks and Open Space
Rail Road	Office	Undeveloped
Super Neighborhood Boundary	Industrial	Agricultural Production
Single-family Residential	Public and Institutional	Open Water
Multi-family Residential	Transportation and Utilities	Unknown

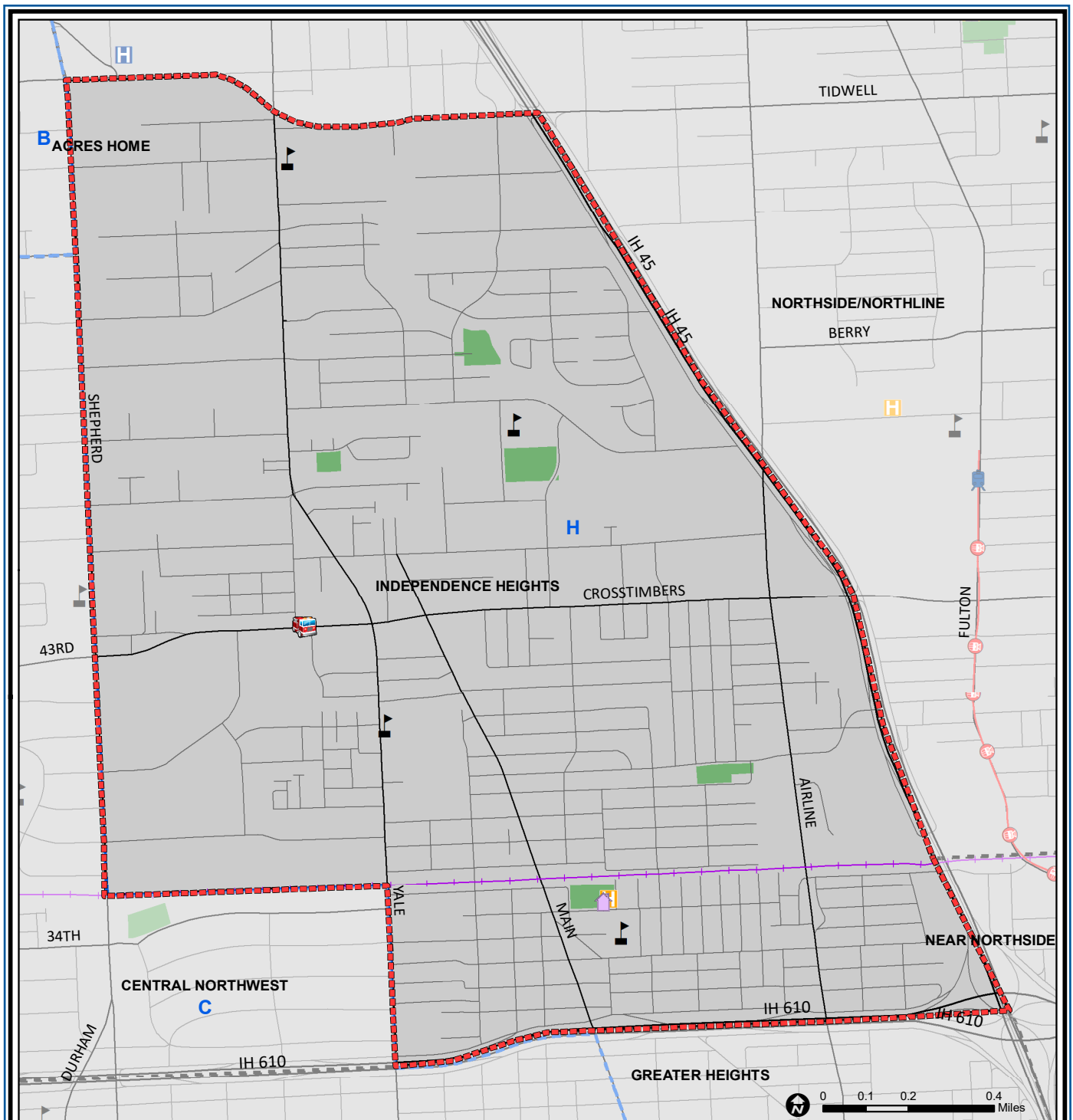
Source: City of Houston GIS Database, HCAD

Date: April 2021

This map is made available for reference purposes only and should not be substituted for a survey product. The City of Houston will not accept liability of any kind in conjunction with its use.



**PLANNING &
DEVELOPMENT
DEPARTMENT**



Independence Heights : Public Facilities

	Super Neighborhood Boundary		Airports		Rail Road
	Community Centers		Harris County Hospitals		Metro Rail Stations
	Fire Station		Private Hospitals		Metro Rail Line
	Police Station		Other Health Facilities		Parks
	School		Library		TIRZ

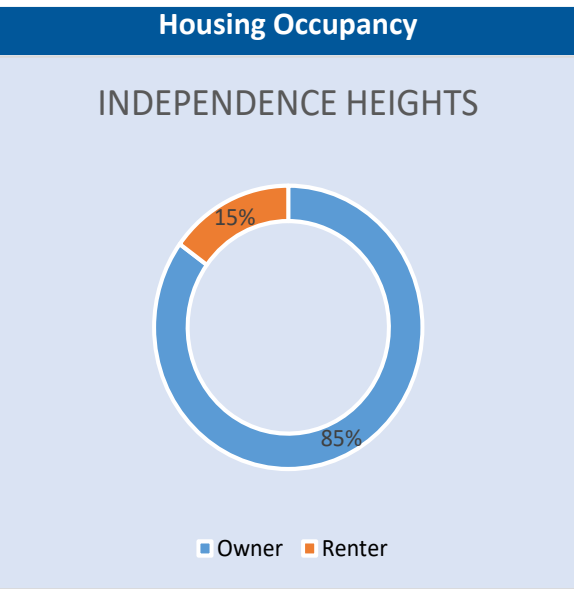
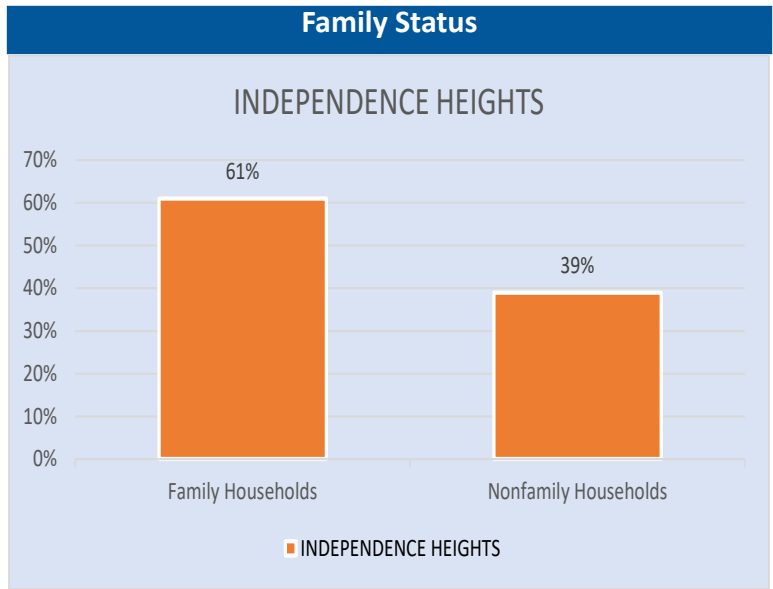
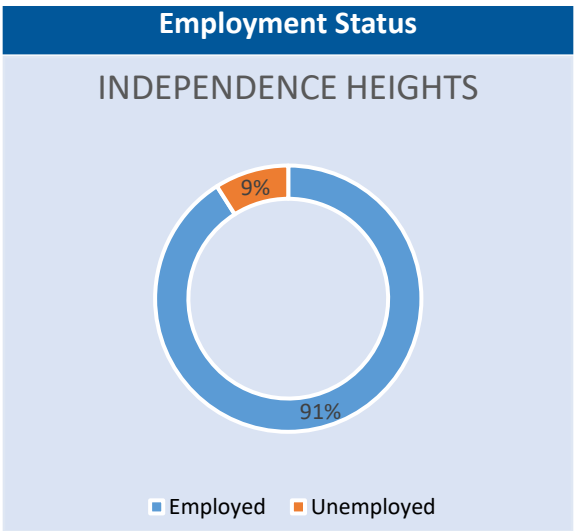
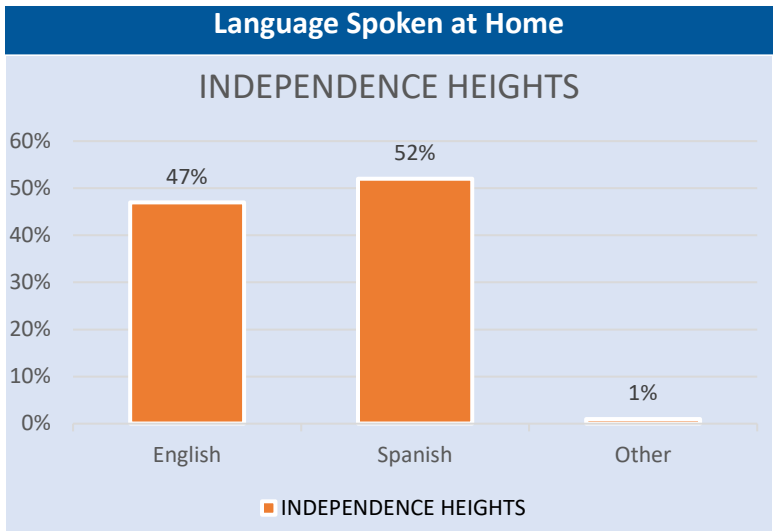
Source: City of Houston GIS Database

Date: April 2021

This map is made available for reference purposes only and should not be substituted for a survey product. The City of Houston will not accept liability of any kind in conjunction with its use.



**PLANNING &
DEVELOPMENT
DEPARTMENT**



Source: U.S. Census Bureau, 2000
American Community Survey, 2015-2019 Estimates

