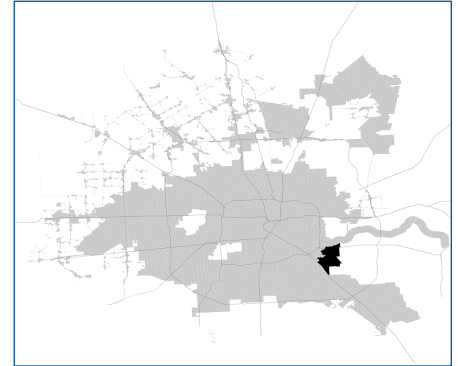


SUPER Neighborhood RESOURCE ASSESSMENT



	Super Neighborhood		Houston	
	2000	2019	2000	2019
Pop. characteristics				
Total population	22,929	25,083	1,953,631	2,310,432
Persons per sq. mile	3,276	3,644	3,166	3,443
Age of Population				
Under 5 years	9%	7%	8%	8%
5- 17 years	24%	20%	19%	17%
18- 64 years	57%	63%	64%	65%
65 and over	9%	10%	9%	10%
Ethnicity				
Non Hispanic Whites	21%	8%	31%	24%
Non Hispanic Blacks	3%	4%	25%	22%
Hispanics	74%	86%	37%	45%
Non Hispanic Asians	1%	2%	6%	7%
Non Hispanic Others	1%	0%	1%	2%
Income				
Under \$25,000	35%	24%	33%	24%
\$25,000 to \$49,999	36%	22%	31%	24%
\$50,000 to \$99,999	25%	35%	24%	27%
Over \$100,000	5%	19%	12%	25%
Median Household Income	\$34,823	\$54,721	\$36,616	\$52,338
Educational Status				
No Diploma	49%	37%	30%	21%
High School Diploma	26%	31%	20%	23%
Some College	17%	23%	23%	23%
Bachelor's or Higher	8%	9%	27%	33%
Housing and Households				
Total housing units	7,049	8,009	782,378	968,704
Occupied	95%	93%	92%	89%
Vacant	5%	7%	8%	11%
Total households	6,700	7,435	717,945	858,374
Family households	5,226	5,662	457,549	521,891
Median Housing Value	\$55,425	\$107,238	\$79,300	\$171,800

Description

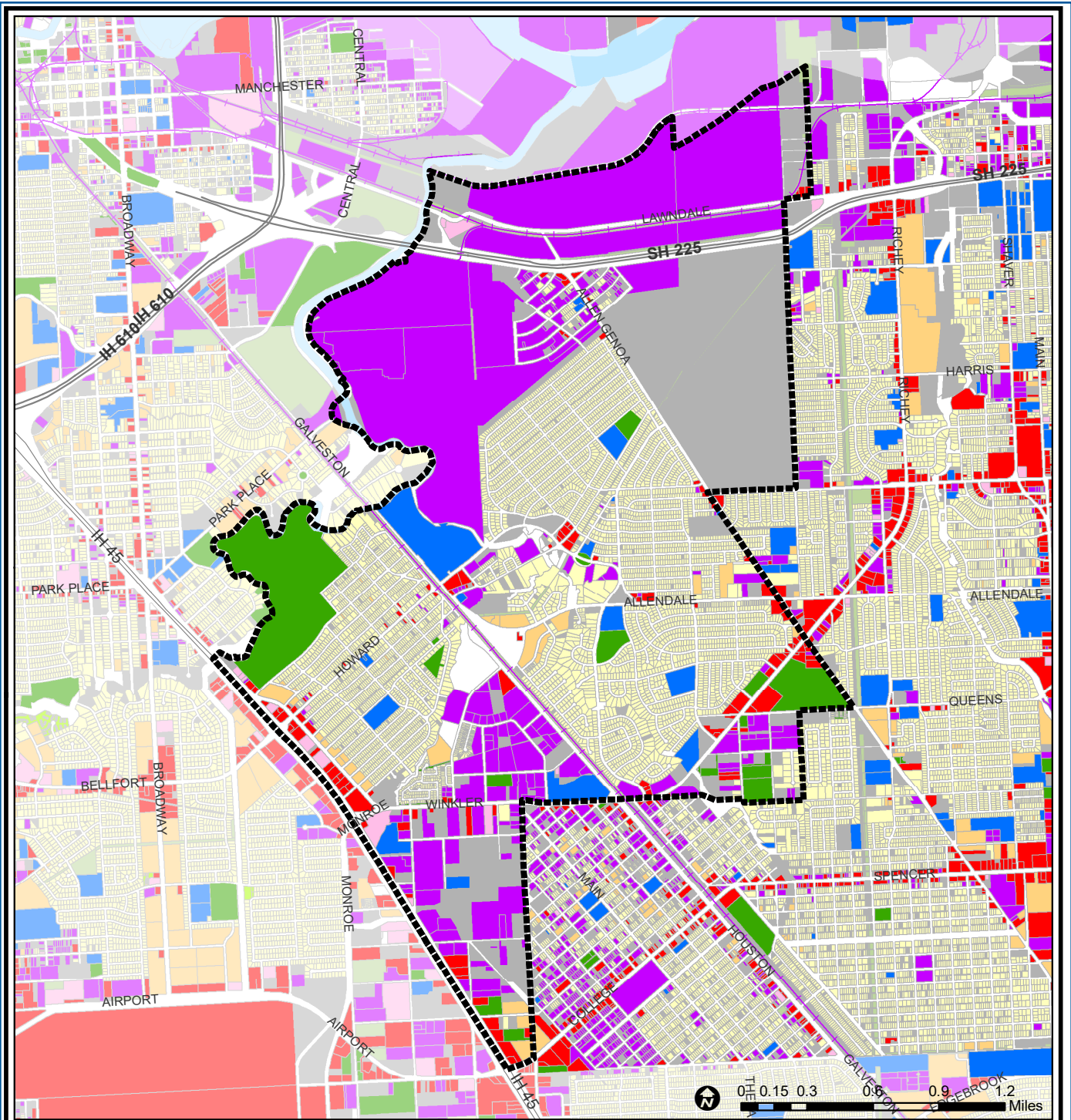
Meadowbrook/Allendale is located on Houston's southeast edge bounded by the cities of Pasadena and South Houston, Loop 610, the Gulf Freeway, and the Ship Channel. The northern part of the community is home to several major chemical plants. The southern corner, which was once an oilfield, is now an industrial area. Several wooded neighborhoods with single-family homes are nestled in between. The oldest areas, Meadowbrook and Allendale, were built before World War II. After the war, Forest Oaks and Oak Meadows were built for Houston's growing population of middle-income citizens. The newest addition to the area, Meadowcreek Village, contains the largest homes in the community.

Highlights

- ✓ Houston City Council Districts E & I
- ✓ Houston Independent School District
- ✓ Pasadena Independent School District
- ✓ 3 Police beats (includes bordering beats)
- ✓ 4,483 acres (7.0 sq. miles)



**PLANNING &
DEVELOPMENT
DEPARTMENT**



Meadowbrook / Allendale : Land Use

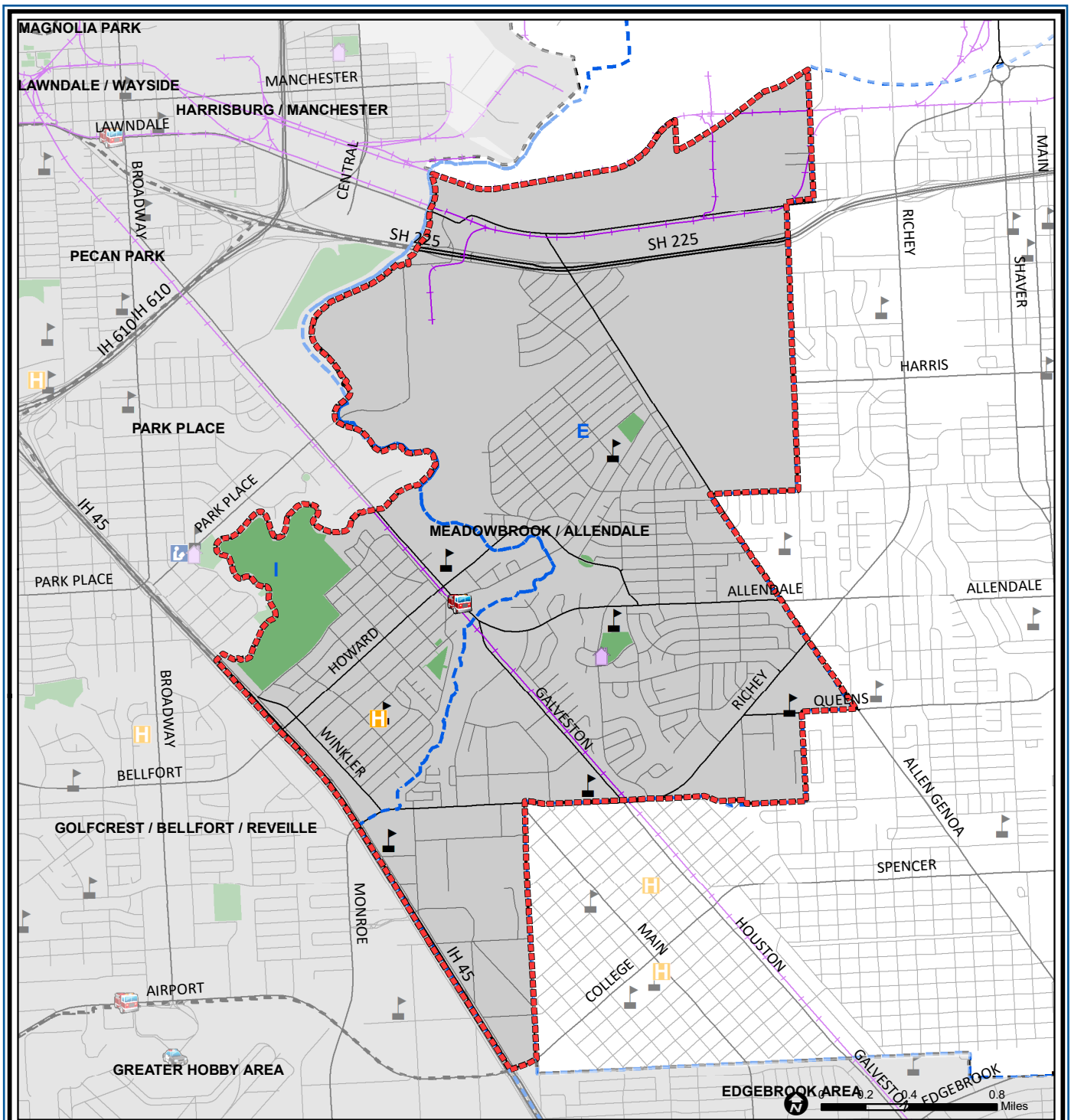
Source: City of Houston GIS Database, HCAD
 Date: April 2021

- | | | |
|-----------------------------|------------------------------|-------------------------|
| Freeway | Commercial | Parks and Open Space |
| Rail Road | Office | Undeveloped |
| Super Neighborhood Boundary | Industrial | Agricultural Production |
| Single-family Residential | Public and Institutional | Open Water |
| Multi-family Residential | Transportation and Utilities | Unknown |

This map is made available for reference purposes only and should not be substituted for a survey product. The City of Houston will not accept liability of any kind in conjunction with its use.



PLANNING & DEVELOPMENT DEPARTMENT



Meadowbrook / Allendale : Public Facilities

Source: City of Houston GIS Database

Date: April 2021

This map is made available for reference purposes only and should not be substituted for a survey product. The City of Houston will not accept liability of any kind in conjunction with its use.

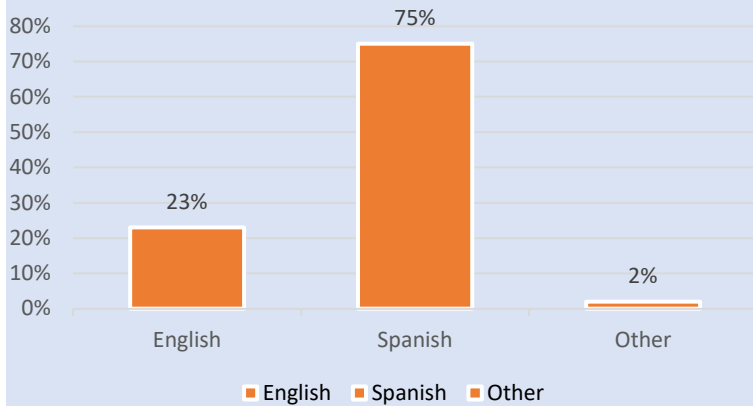
- | | | |
|-----------------------------|-------------------------|---------------------|
| Super Neighborhood Boundary | Airports | Rail Road |
| Community Centers | Harris County Hospitals | Metro Rail Stations |
| Fire Station | Private Hospitals | Metro Rail Line |
| Police Station | Other Health Facilities | Parks |
| School | Library | TIRZ |



PLANNING & DEVELOPMENT DEPARTMENT

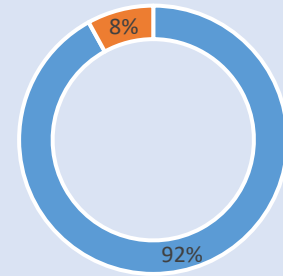
Language Spoken at Home

MEADOWBROOK / ALLENDALE



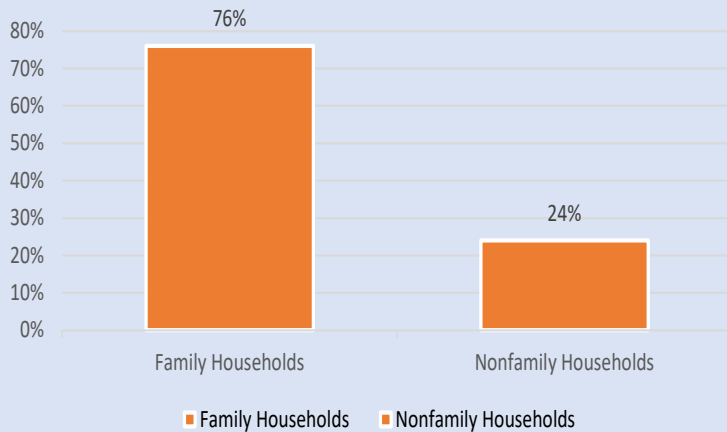
Employment Status

MEADOWBROOK / ALLENDALE



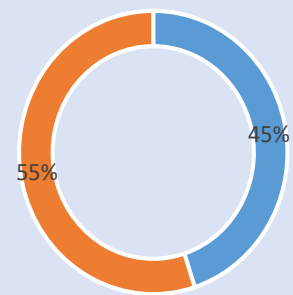
Family Status

MEADOWBROOK / ALLENDALE



Housing Occupancy

MEADOWBROOK / ALLENDALE



Source: U.S. Census Bureau, 2000
American Community Survey, 2015-2019 Estimates



**PLANNING &
DEVELOPMENT
DEPARTMENT**