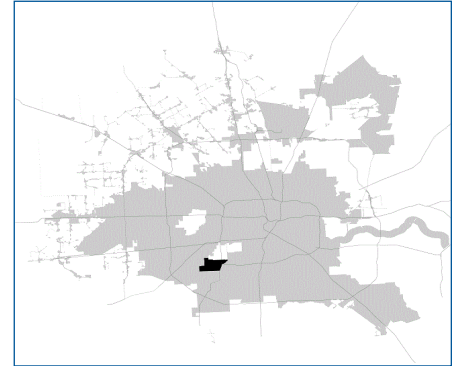


# SUPER Neighborhood RESOURCE ASSESSMENT



	Super Neighborhood		Houston	
	2000	2019	2000	2019
<b>Pop. characteristics</b>				
Total population	19,841	19,197	1,953,631	2,310,432
Persons per sq. mile	4,851	4,673	3,166	3,443
<b>Age of Population</b>				
Under 5 years	6%	8%	8%	8%
5- 17 years	17%	17%	19%	17%
18- 64 years	58%	59%	64%	65%
65 and over	19%	16%	9%	10%
<b>Ethnicity</b>				
Non Hispanic Whites	77%	53%	31%	24%
Non Hispanic Blacks	4%	12%	25%	22%
Hispanics	9%	19%	37%	45%
Non Hispanic Asians	8%	12%	6%	7%
Non Hispanic Others	2%	4%	1%	2%
<b>Income</b>				
Under \$25,000	18%	14%	33%	24%
\$25,000 to \$49,999	24%	18%	31%	24%
\$50,000 to \$99,999	28%	22%	24%	27%
Over \$100,000	30%	46%	12%	25%
<b>Median Household Income</b>	\$65,413	\$106,348	\$36,616	\$52,338
<b>Educational Status</b>				
No Diploma	6%	5%	30%	21%
High School Diploma	12%	14%	20%	23%
Some College	22%	21%	23%	23%
Bachelor's or Higher	60%	60%	27%	33%
<b>Housing and Households</b>				
Total housing units	8,869	9,523	782,378	968,704
Occupied	96%	81%	92%	89%
Vacant	4%	19%	8%	11%
Total households	8,548	7,704	717,945	858,374
Family households	5,733	5,123	457,549	521,891
Median Housing Value	\$148,227	\$410,622	\$79,300	\$171,800

**Description**

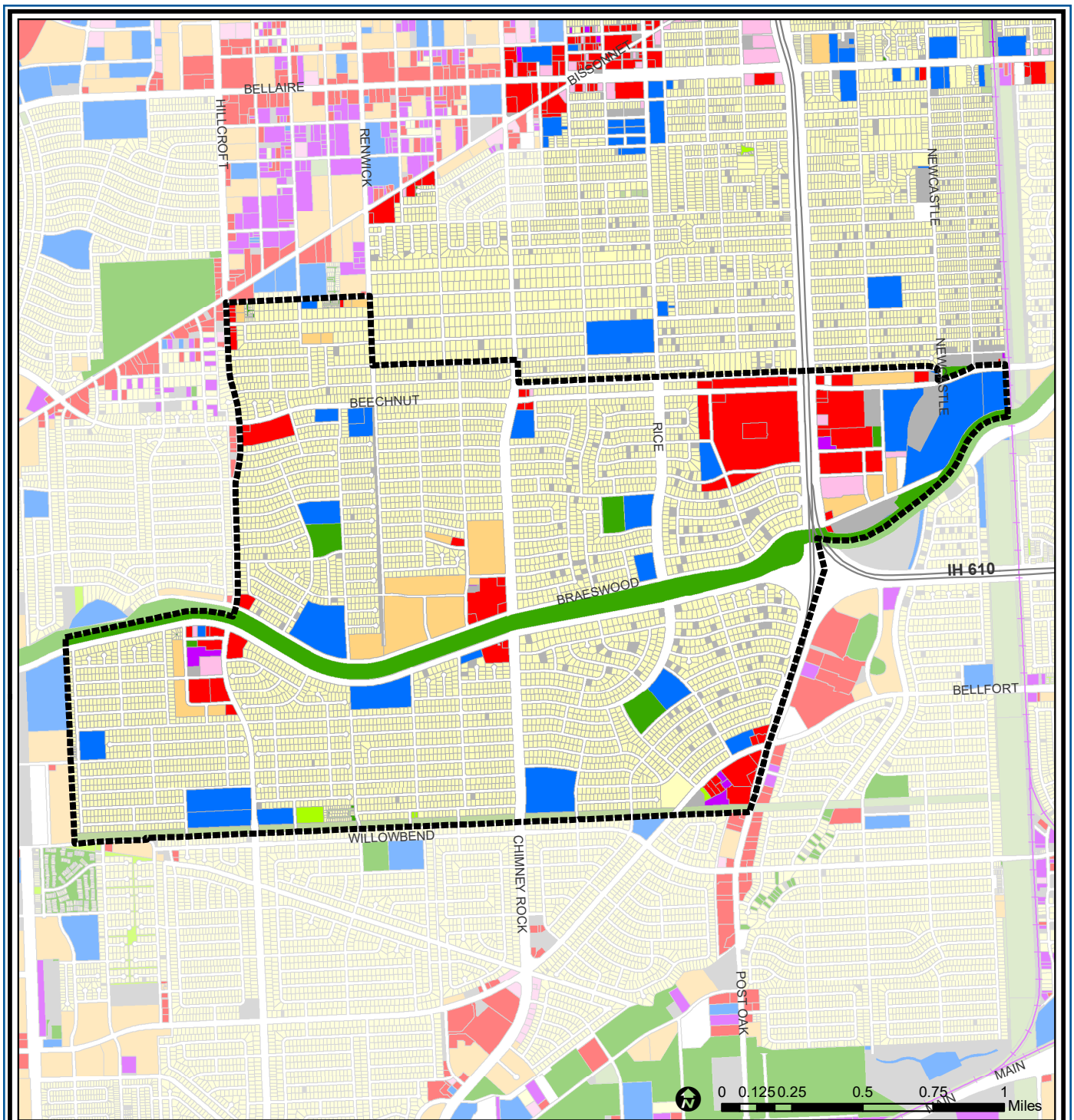
Meyerland Area is found on both sides of Brays Bayou at the southwest corner of Loop 610. Its many neighborhoods include Meyerland, Marilyn Estates, Barkley Square and Maplewood. Many institutions of Houston's Jewish community are found here, including several temples and the Jewish Community Center. The northeast corner of the community includes the recently developed Meyerland Center retail development. The area was developed beginning in the 1950s.

**Highlights**

- ✓ Houston City Council Districts C & K
- ✓ Houston Independent School District
- ✓ 6 Police beats (includes bordering beats)
- ✓ 2,615 acres (4.09 sq. miles)



**PLANNING &  
DEVELOPMENT  
DEPARTMENT**



### Meyerland Area : Land Use

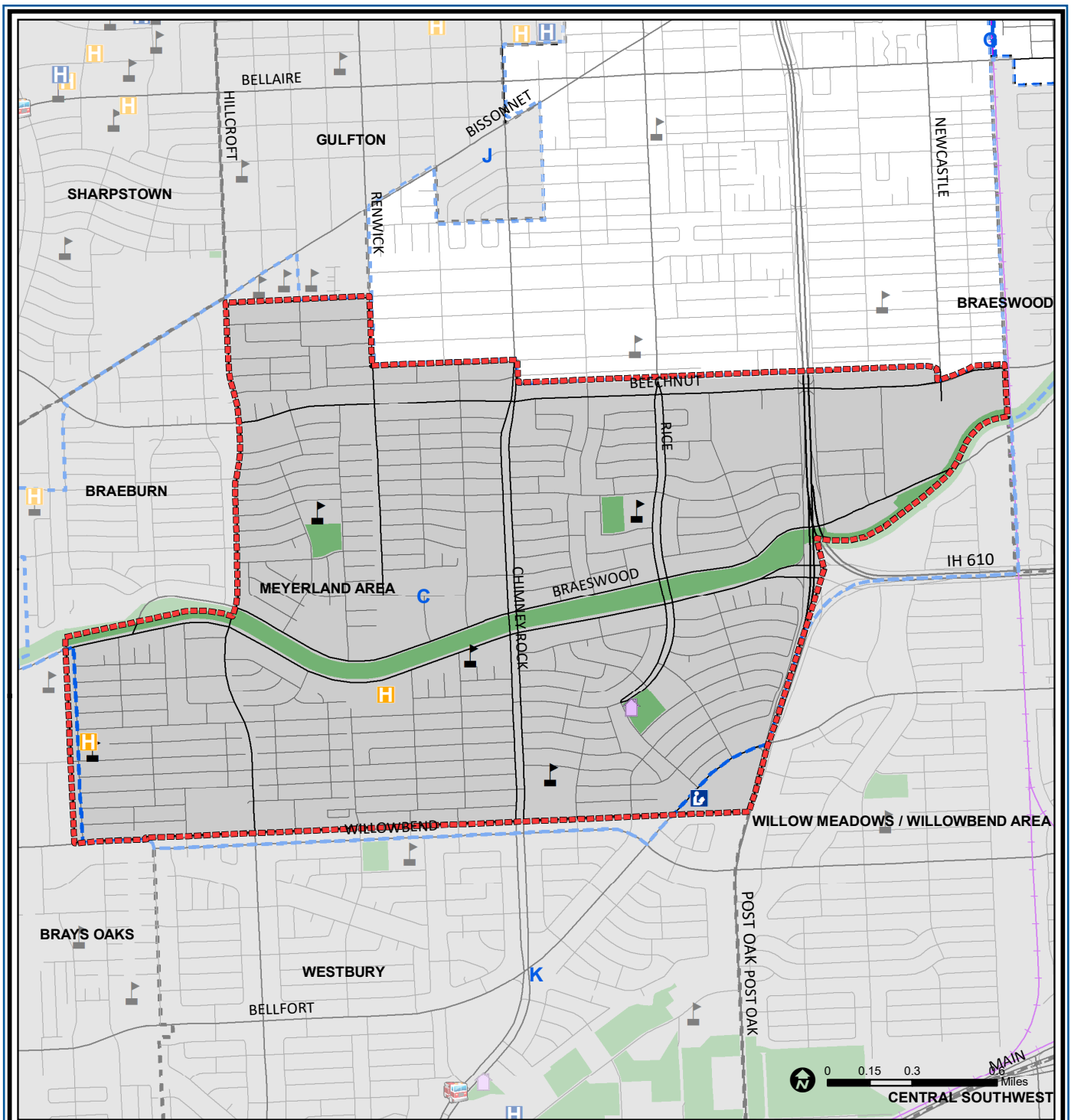
- |                             |                              |                         |
|-----------------------------|------------------------------|-------------------------|
| Freeway                     | Commercial                   | Parks and Open Space    |
| Rail Road                   | Office                       | Undeveloped             |
| Super Neighborhood Boundary | Industrial                   | Agricultural Production |
| Single-family Residential   | Public and Institutional     | Open Water              |
| Multi-family Residential    | Transportation and Utilities | Unknown                 |

Source: City of Houston GIS Database, HCAD  
Date: April 2021

This map is made available for reference purposes only and should not be substituted for a survey product. The City of Houston will not accept liability of any kind in conjunction with its use.



**PLANNING & DEVELOPMENT DEPARTMENT**



### Meyerland Area : Public Facilities

- |  |                             |  |                         |  |                     |
|--|-----------------------------|--|-------------------------|--|---------------------|
|  | Super Neighborhood Boundary |  | Airports                |  | Rail Road           |
|  | Community Centers           |  | Harris County Hospitals |  | Metro Rail Stations |
|  | Fire Station                |  | Private Hospitals       |  | Metro Rail Line     |
|  | Police Station              |  | Other Health Facilities |  | Parks               |
|  | School                      |  | Library                 |  | TIRZ                |

Source: City of Houston GIS Database

Date: April 2021

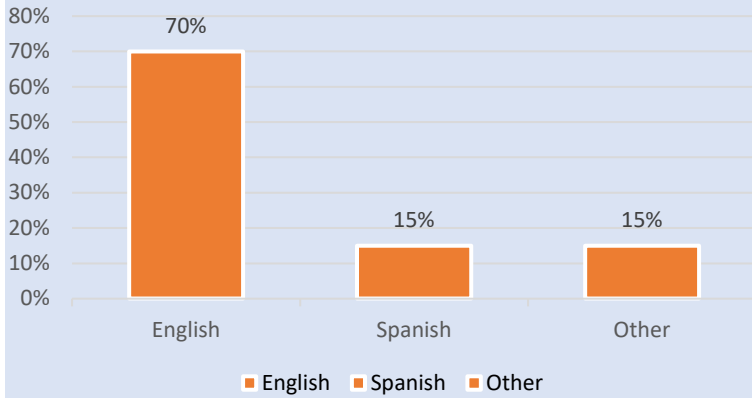
This map is made available for reference purposes only and should not be substituted for a survey product. The City of Houston will not accept liability of any kind in conjunction with its use.



**PLANNING & DEVELOPMENT DEPARTMENT**

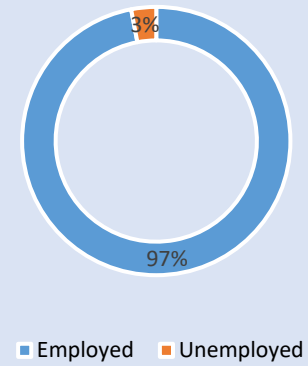
### Language Spoken at Home

#### MEYERLAND AREA



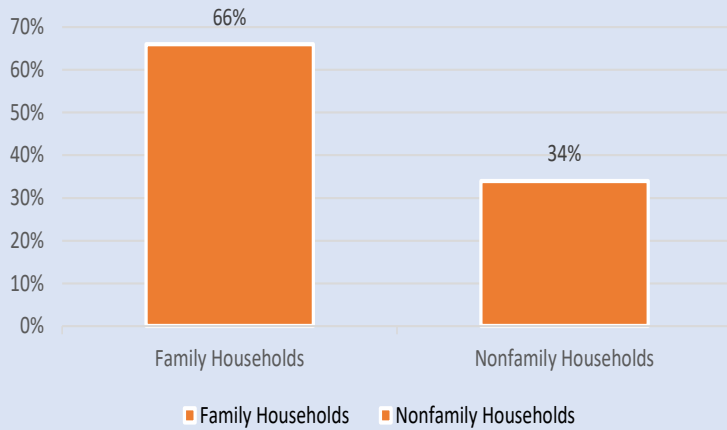
### Employment Status

#### MEYERLAND AREA



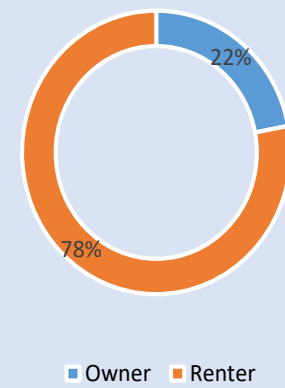
### Family Status

#### MEYERLAND AREA



### Housing Occupancy

#### MEYERLAND AREA



Source: U.S. Census Bureau, 2000  
American Community Survey, 2015-2019 Estimates



**PLANNING &  
DEVELOPMENT  
DEPARTMENT**