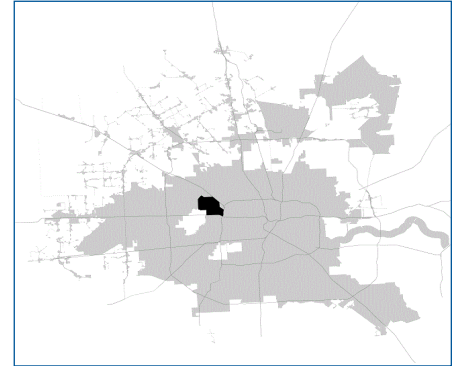


# SUPER Neighborhood RESOURCE ASSESSMENT



	Super Neighborhood		Houston	
	2000	2019	2000	2019
<b>Pop. characteristics</b>				
Total population	26,491	26,986	1,953,631	2,310,432
Persons per sq. mile	4,336	4,413	3,166	3,443
<b>Age of Population</b>				
Under 5 years	10%	7%	8%	8%
5- 17 years	20%	18%	19%	17%
18- 64 years	62%	65%	64%	65%
65 and over	8%	10%	9%	10%
<b>Ethnicity</b>				
Non Hispanic Whites	30%	30%	31%	24%
Non Hispanic Blacks	4%	6%	25%	22%
Hispanics	61%	58%	37%	45%
Non Hispanic Asians	4%	4%	6%	7%
Non Hispanic Others	1%	2%	1%	2%
<b>Income</b>				
Under \$25,000	37%	23%	33%	24%
\$25,000 to \$49,999	33%	28%	31%	24%
\$50,000 to \$99,999	22%	24%	24%	27%
Over \$100,000	8%	25%	12%	25%
<b>Median Household Income</b>	\$32,733	\$64,349	\$36,616	\$52,338
<b>Educational Status</b>				
No Diploma	46%	28%	30%	21%
High School Diploma	19%	27%	20%	23%
Some College	18%	16%	23%	23%
Bachelor's or Higher	16%	29%	27%	33%
<b>Housing and Households</b>				
Total housing units	8,541	10,458	782,378	968,704
Occupied	42%	91%	92%	89%
Vacant	9%	9%	8%	11%
Total households	1,500	9,527	717,945	858,374
Family households	5,864	6,087	457,549	521,891
Median Housing Value	\$85,729	\$322,776	\$79,300	\$171,800

**Description**

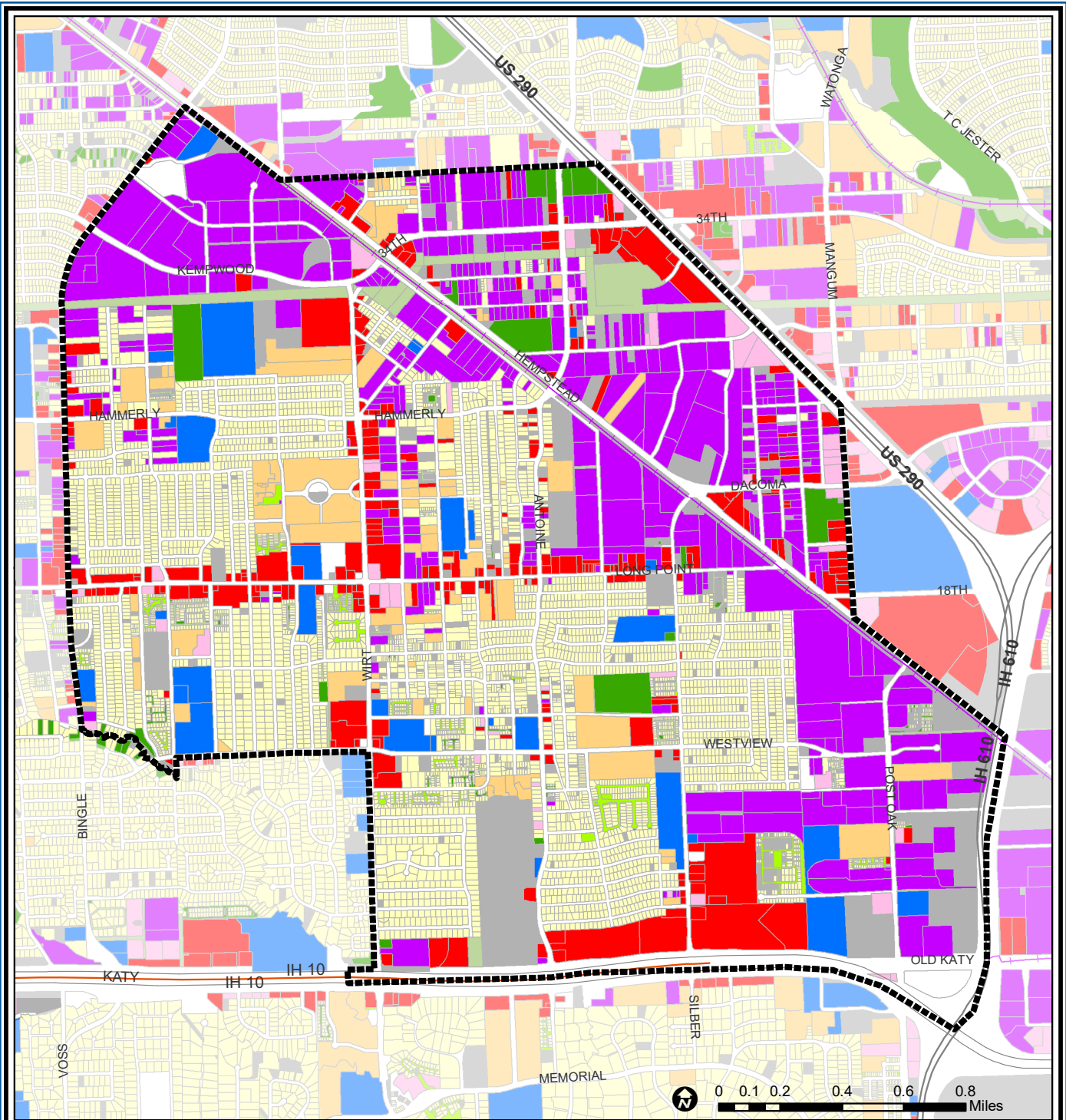
Spring Branch East, located east of Bingle, is the oldest part of the larger Spring Branch community. Many industrial and warehouse developments are found in the northern and eastern parts of the community near Hempstead Highway and US 290. The former site of the Cameron Iron Works on I-10, the community's southern boundary, is now being redeveloped as a retail and entertainment complex. New home construction is occurring near Wirt Road and in several gated subdivisions replacing deteriorated apartment complexes. Afton Village, Brykerwoods, Monarch Oaks, Ridgcrest, Hillendahl Acres, Long Point Oaks, Pine Terrace, and Westview Terrace are some of the other subdivisions in the area.

**Highlights**

- ✓ Houston City Council District A
- ✓ Houston Independent School District
- ✓ Spring Branch Independent School District
- ✓ 5 Police beats (includes bordering beats)
- ✓ 3,912 acres (6.11 sq. miles)



**PLANNING & DEVELOPMENT DEPARTMENT**



### Spring Branch East : Land Use

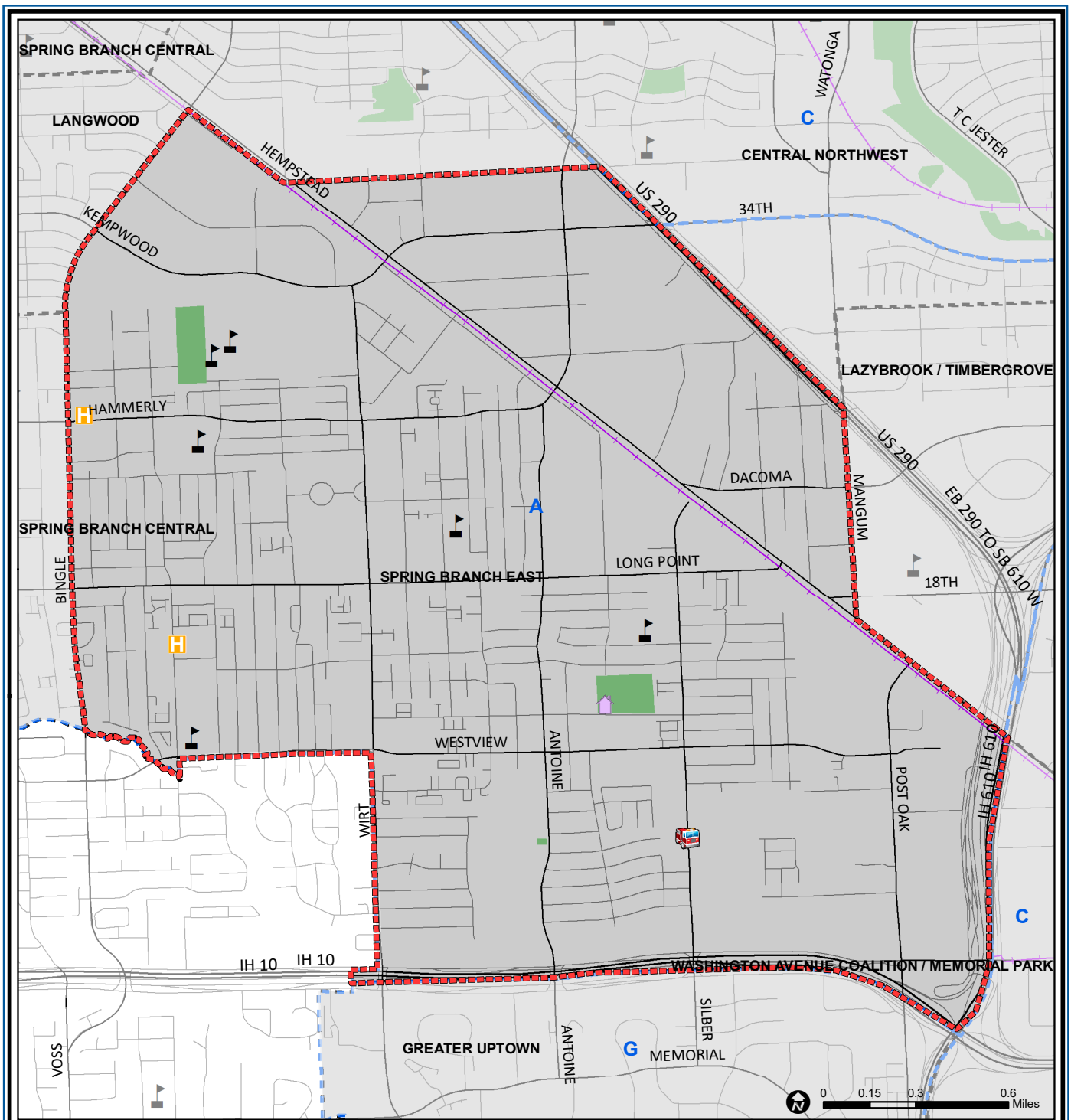
- |                             |                              |                         |
|-----------------------------|------------------------------|-------------------------|
| Freeway                     | Commercial                   | Parks and Open Space    |
| Rail Road                   | Office                       | Undeveloped             |
| Super Neighborhood Boundary | Industrial                   | Agricultural Production |
| Single-family Residential   | Public and Institutional     | Open Water              |
| Multi-family Residential    | Transportation and Utilities | Unknown                 |

Source: City of Houston GIS Database, HCAD  
 Date: April 2021

This map is made available for reference purposes only and should not be substituted for a survey product. The City of Houston will not accept liability of any kind in conjunction with its use.



**PLANNING & DEVELOPMENT DEPARTMENT**



Source: City of Houston GIS Database

Date: April 2021

This map is made available for reference purposes only and should not be substituted for a survey product. The City of Houston will not accept liability of any kind in conjunction with its use.



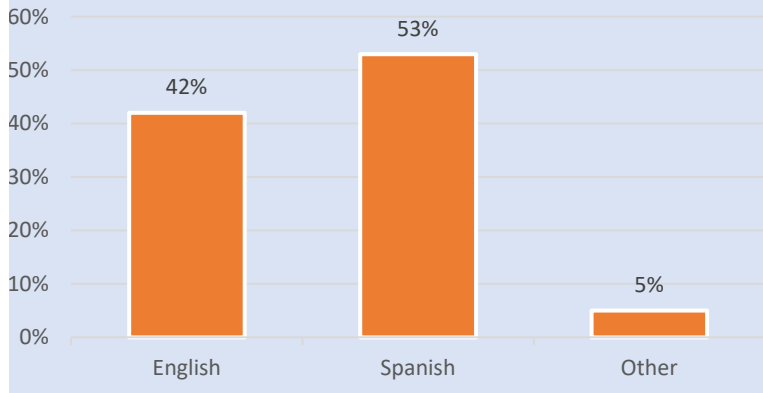
**PLANNING & DEVELOPMENT DEPARTMENT**

### Spring Branch East : Public Facilities

- |                             |                         |                     |
|-----------------------------|-------------------------|---------------------|
| Super Neighborhood Boundary | Airports                | Rail Road           |
| Community Centers           | Harris County Hospitals | Metro Rail Stations |
| Fire Station                | Private Hospitals       | Metro Rail Line     |
| Police Station              | Other Health Facilities | Parks               |
| School                      | Library                 | TIRZ                |

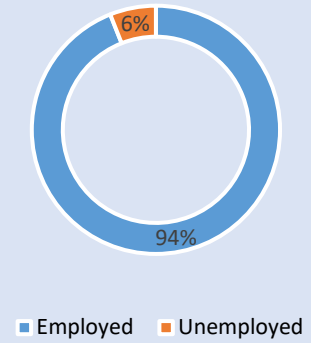
### Language Spoken at Home

#### SPRING BRANCH EAST



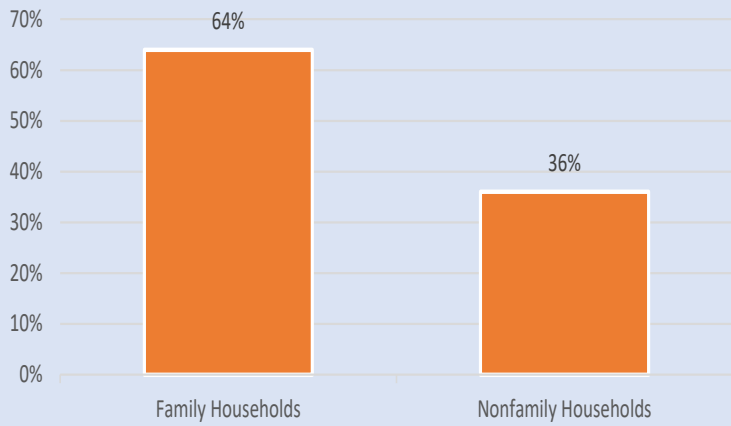
### Employment Status

#### SPRING BRANCH EAST



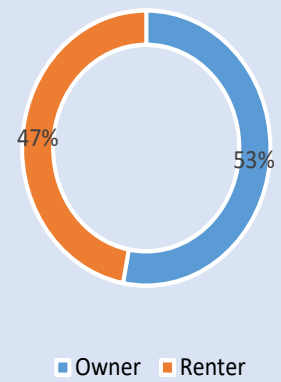
### Family Status

#### SPRING BRANCH EAST



### Housing Occupancy

#### SPRING BRANCH EAST



Source: U.S. Census Bureau, 2000  
American Community Survey, 2015-2019 Estimates



**PLANNING &  
DEVELOPMENT  
DEPARTMENT**