

SUPER Neighborhood RESOURCE ASSESSMENT



	Super Neighborhood		Houston	
	2000	2019	2000	2019
Pop. characteristics				
Total population	18,552	34,796	1,953,631	2,310,432
Persons per sq. mile	2,337	4,340	3,166	3,443
Age of Population				
Under 5 years	7%	5%	8%	8%
5- 17 years	16%	5%	19%	17%
18- 64 years	69%	83%	64%	65%
65 and over	8%	7%	9%	10%
Ethnicity				
Non Hispanic Whites	34%	58%	31%	24%
Non Hispanic Blacks	8%	7%	25%	22%
Hispanics	56%	21%	37%	45%
Non Hispanic Asians	2%	11%	6%	7%
Non Hispanic Others	1%	3%	1%	2%
Income				
Under \$25,000	34%	7%	33%	24%
\$25,000 to \$49,999	26%	7%	31%	24%
\$50,000 to \$99,999	23%	25%	24%	27%
Over \$100,000	17%	61%	12%	25%
Median Household Income	\$43,892	\$128,544	\$36,616	\$52,338
Educational Status				
No Diploma	39%	3%	30%	21%
High School Diploma	13%	6%	20%	23%
Some College	17%	14%	23%	23%
Bachelor's or Higher	31%	77%	27%	33%
Housing and Households				
Total housing units	8,669	19,977	782,378	968,704
Occupied	85%	89%	92%	89%
Vacant	15%	11%	8%	11%
Total households	7,396	17,704	717,945	858,374
Family households	3,642	7,298	457,549	521,891
Median Housing Value	\$139,959	\$418,079	\$79,300	\$171,800

Description

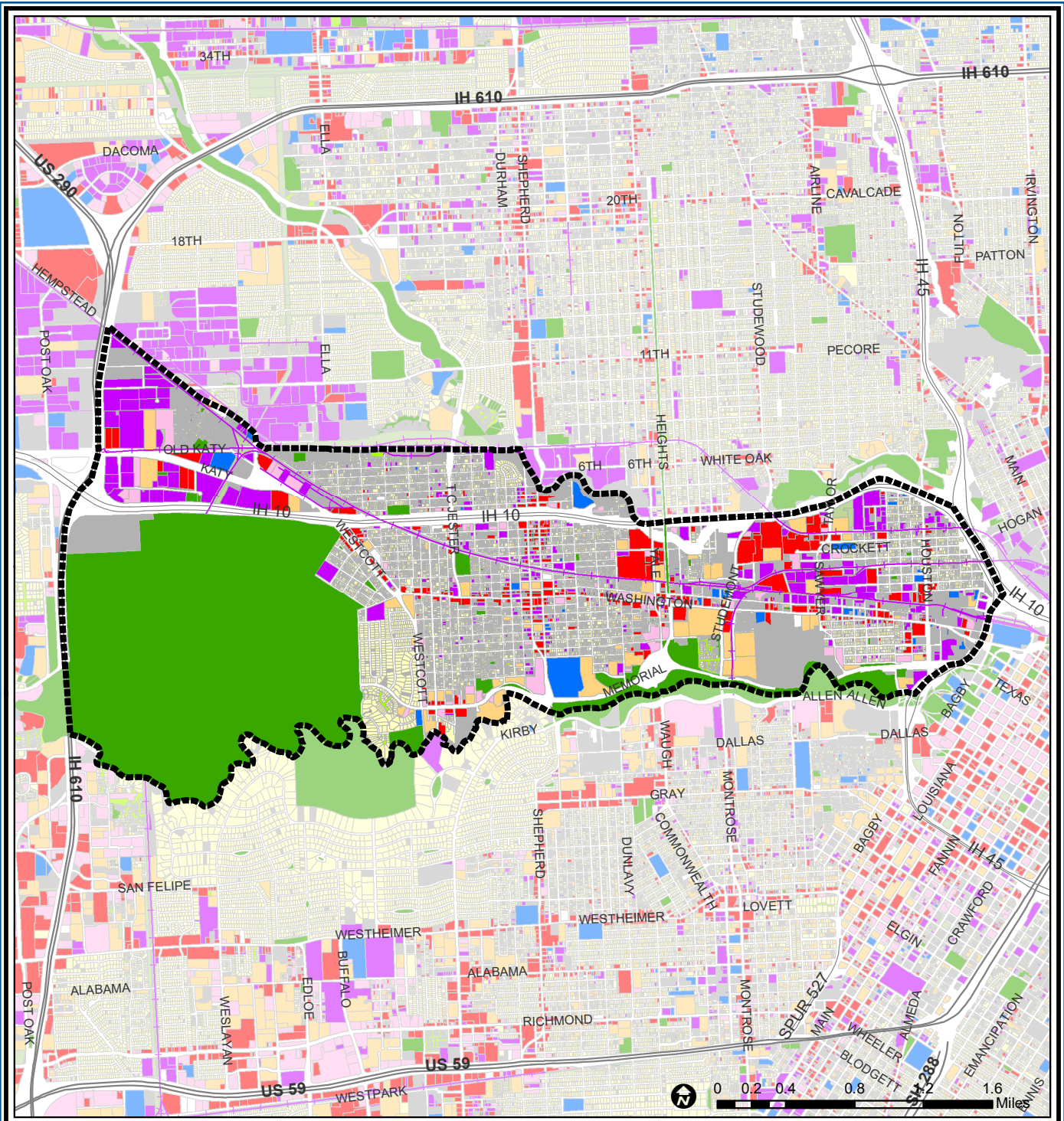
Memorial Park/Washington Avenue is a corridor stretching from the northern edge of downtown on the east to Loop 610 on the west. It includes many of Houston's most historic sites such as Memorial Park, one of the city's primary environmental assets located on the former grounds of Camp Logan, a World War I Army training camp. Residential areas, in the west, adjacent to the park, are rapidly redeveloping with high end single-family homes. The eastern end of the area includes First and Sixth Wards, political geographic units, which date from the 19th Century. Sixth Ward contains the city's best Victorian era buildings. Interstate 10 creates a barrier on the northern boundary.

Highlights

- ✓ Houston City Council Districts C & H
- ✓ Houston Independent School District
- ✓ 14 Police beats (includes bordering beats)
- ✓ 5,081 acres (7.94 sq. miles)



PLANNING & DEVELOPMENT DEPARTMENT



Washington Ave. Coalition / Memorial Park : Land Use

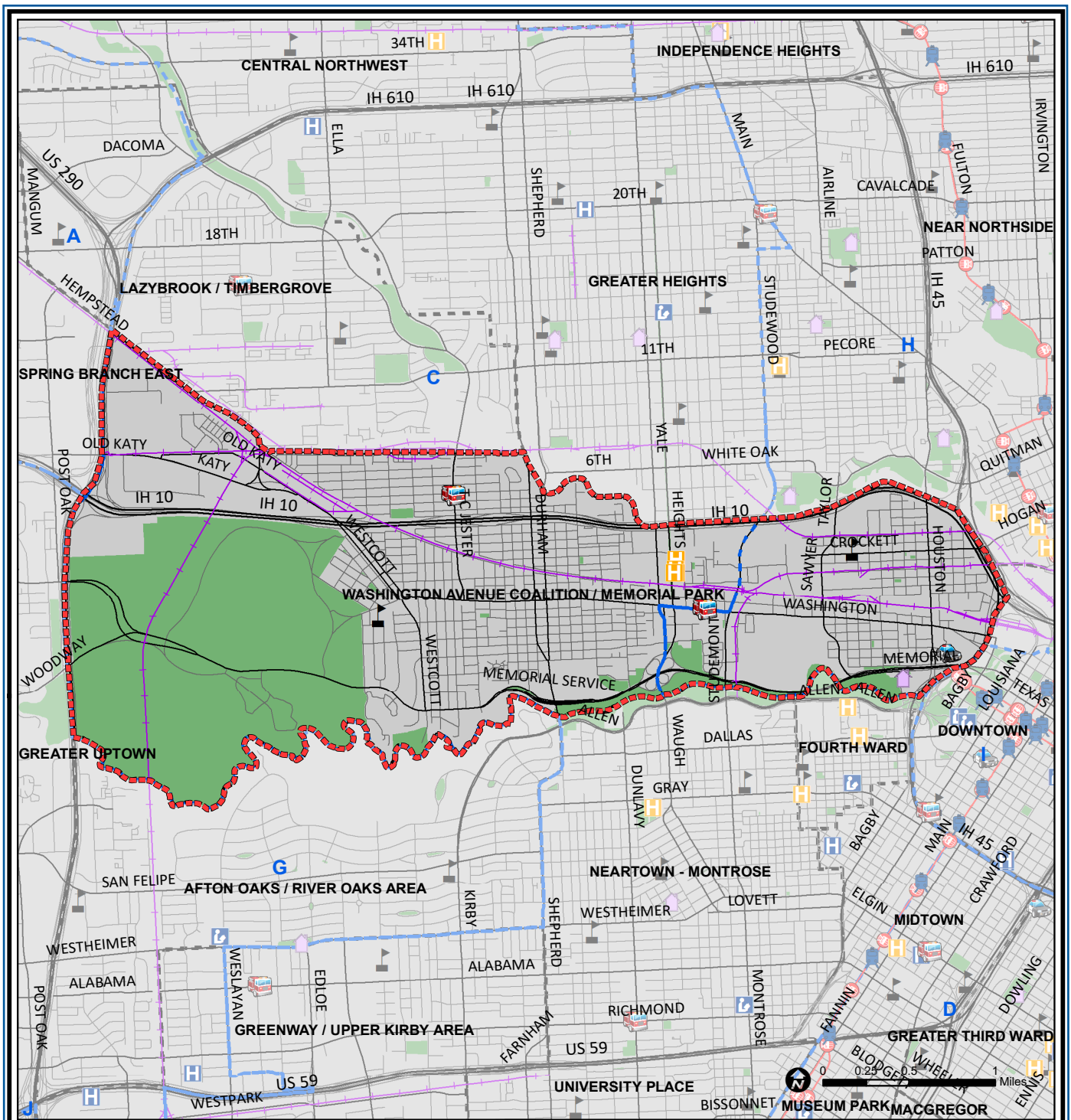
- | | | |
|-----------------------------|------------------------------|-------------------------|
| Freeway | Commercial | Parks and Open Space |
| Rail Road | Office | Undeveloped |
| Super Neighborhood Boundary | Industrial | Agricultural Production |
| Single-family Residential | Public and Institutional | Open Water |
| Multi-family Residential | Transportation and Utilities | Unknown |

Source: City of Houston GIS Database, HCAD
Date: April 2021

This map is made available for reference purposes only and should not be substituted for a survey product. The City of Houston will not accept liability of any kind in conjunction with its use.



PLANNING & DEVELOPMENT DEPARTMENT



Washington Ave Coalition / Memorial Park : Public Facilities

Source: City of Houston GIS Database

Date: May 2021

- | | | |
|-----------------------------|-------------------------|---------------------|
| Super Neighborhood Boundary | Airports | Rail Road |
| Community Centers | Harris County Hospitals | Metro Rail Stations |
| Fire Station | Private Hospitals | Metro Rail Line |
| Police Station | Other Health Facilities | Parks |
| School | Library | TIRZ |

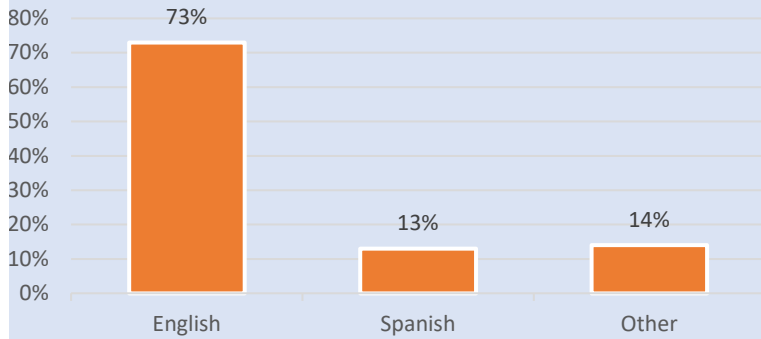
This map is made available for reference purposes only and should not be substituted for a survey product. The City of Houston will not accept liability of any kind in conjunction with its use.



PLANNING & DEVELOPMENT DEPARTMENT

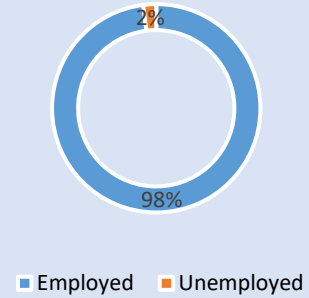
Language Spoken at Home

WASHINGTON AVENUE COALITION / MEMORIAL PARK



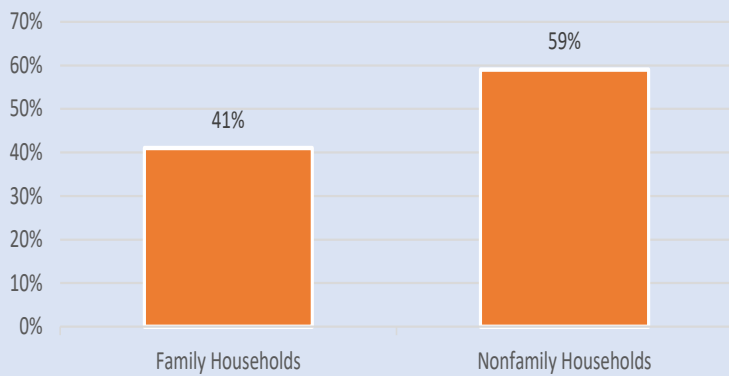
Employment Status

WASHINGTON AVENUE COALITION / MEMORIAL PARK



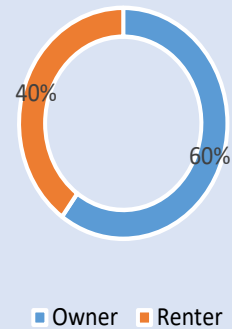
Family Status

WASHINGTON AVENUE COALITION / MEMORIAL PARK



Housing Occupancy

WASHINGTON AVENUE COALITION / MEMORIAL PARK



Source: U.S. Census Bureau, 2000
American Community Survey, 2015-2019 Estimates



**PLANNING &
DEVELOPMENT
DEPARTMENT**