

# SUPER

## Neighborhood

### RESOURCE ASSESSMENT



	Super Neighborhood		Houston	
Pop. characteristics	2000	2015	2000	2015
Total population	9,107	9,744	1,953,631	2,217,760
Persons per sq. mile	7,228	7,746	3,166	3,314
<b>Age of Population</b>				
Under 5 years	9%	7%	8%	8%
5- 17 years	24%	24%	19%	17%
18- 64 years	61%	64%	64%	65%
65 and over	7%	4%	9%	10%
<b>Ethnicity</b>				
Non Hispanic Whites	29%	13%	31%	26%
Non Hispanic Blacks	7%	9%	25%	22%
Hispanics	61%	76%	37%	44%
Non Hispanic Asians	2%	0%	6%	7%
Non Hispanic Others	1%	2%	1%	1%
<b>Income</b>				
Under \$25,000	38%	40%	33%	27%
\$25,001 to \$50,000	38%	32%	31%	25%
\$50,001 to \$100,000	22%	24%	24%	26%
Over \$100,001	2%	4%	12%	22%
<b>Median Household Income</b>	\$30,267	\$42,766	\$36,616	\$46,187
<b>Educational Status</b>				
No Diploma	49%	46%	30%	23%
High School Diploma	30%	31%	20%	23%
Some College	16%	15%	23%	24%
Bachelor's or Higher	5%	9%	27%	31%
<b>Housing and Households</b>				
Total housing units	2,995	3,044	782,378	909,336
Occupied	95%	91%	92%	88%
Vacant	5%	9%	8%	12%
Total households	2,839	2,784	717,945	799,714
Family households	2,114	2,028	457,549	491,778
Median Housing Value	\$53,800	\$86,226	\$79,300	\$131,700

### Description

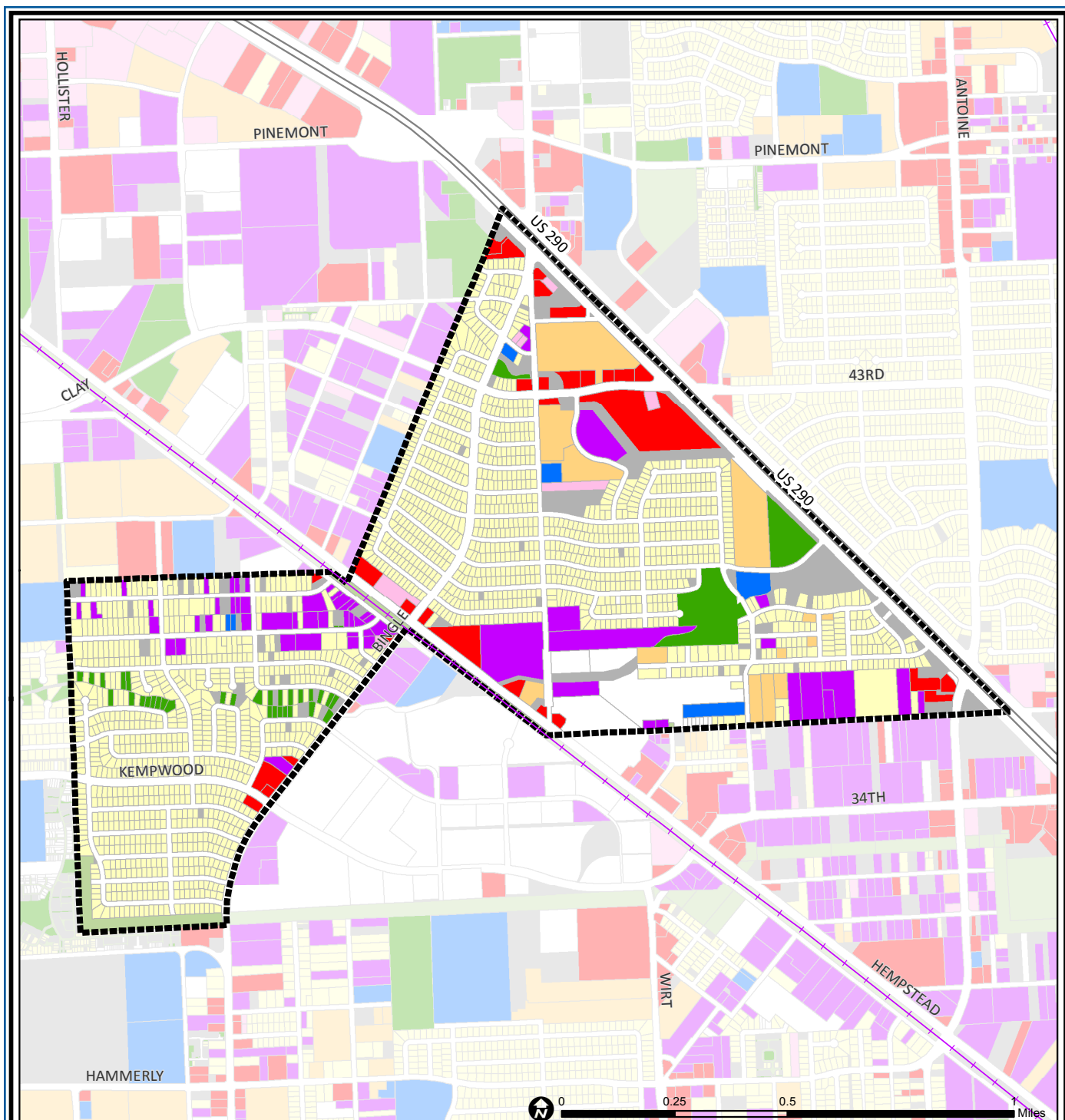
Langwood is a neighborhood of small tract homes built in the 1950s on both sides of Hempstead Highway, which was the primary commuting route at the time. Today, the Northwest Freeway (US 290) forms the northeastern boundary of the primarily single-family residential neighborhood. Several large apartment complexes adjacent to the freeway are also part of the community. Three school districts serve Langwood: Spring Branch ISD serves the area southwest of Hempstead Highway and Cypress Fairbanks ISD and Houston ISD serve the area northwest of Hempstead Highway.

### Highlights

- ✓ Houston City Council District A
- ✓ Cypress-Fairbanks Independent School District
- ✓ Houston Independent School District
- ✓ Spring Branch Independent School District
- ✓ 2 Police beats (includes bordering beats)
- ✓ 805 acres (1.26 sq. miles)



**PLANNING &  
DEVELOPMENT  
DEPARTMENT**



## Langwood: Land Use

Freeway	Commercial	Parks and Open Space
Rail Road	Office	Undeveloped
Super Neighborhood Boundary	Industrial	Agricultural Production
Single-family Residential	Public and Institutional	Open Water
Multi-family Residential	Transportation and Utilities	Unknown

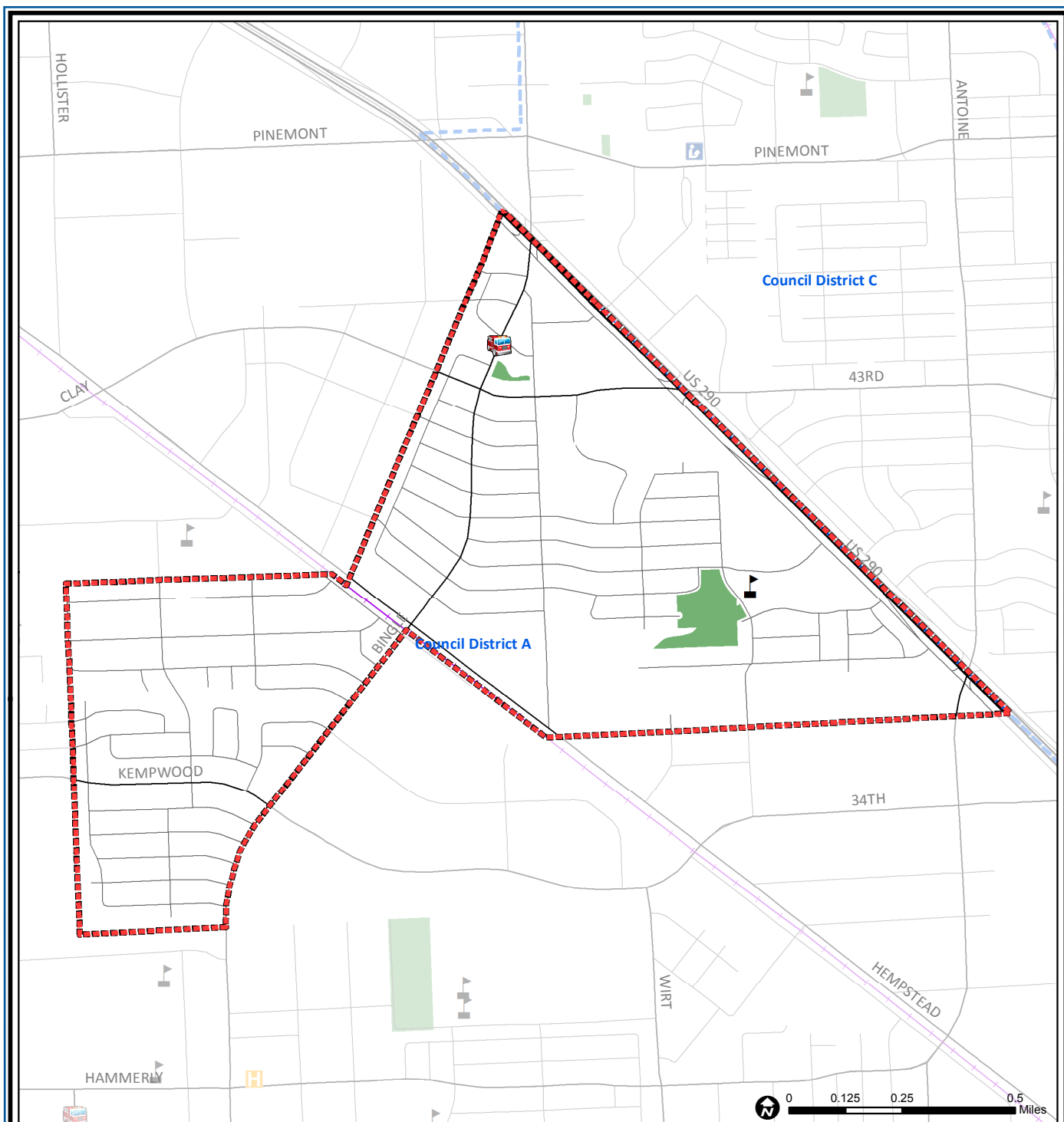
Source: City of Houston GIS Database,  
Harris County Appraisal District

Date: November 16, 2017

This map is made available for reference purposes only and should not be substituted for a survey product. The City of Houston will not accept liability of any kind in conjunction with its use.



**PLANNING &  
DEVELOPMENT  
DEPARTMENT**



## Langwood: Public Facilities

Super Neighborhood Boundary

Community Centers

Fire Station

Police Station

School

Airports

Harris County Hospitals

Private Hospitals

Other Health Facilities

Library

Rail Road

Metro Rail Stations

Metro Rail Line

Parks

TIRZ

Source: City of Houston GIS Database

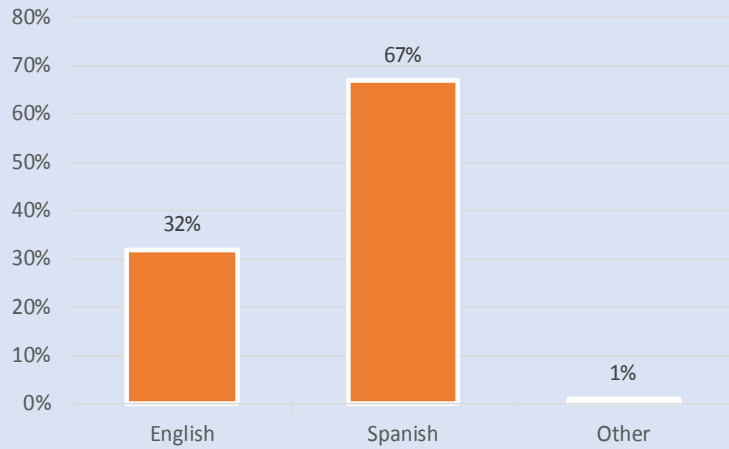
Date: October 2017

This map is made available for reference purposes only and should not be substituted for a survey product. The City of Houston will not accept liability of any kind in conjunction with its use.

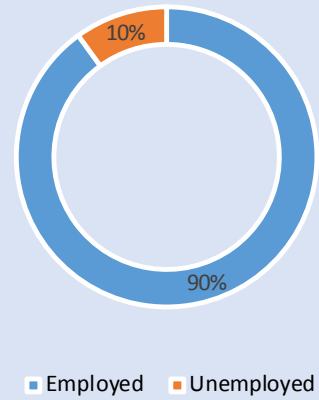


**PLANNING &  
DEVELOPMENT  
DEPARTMENT**

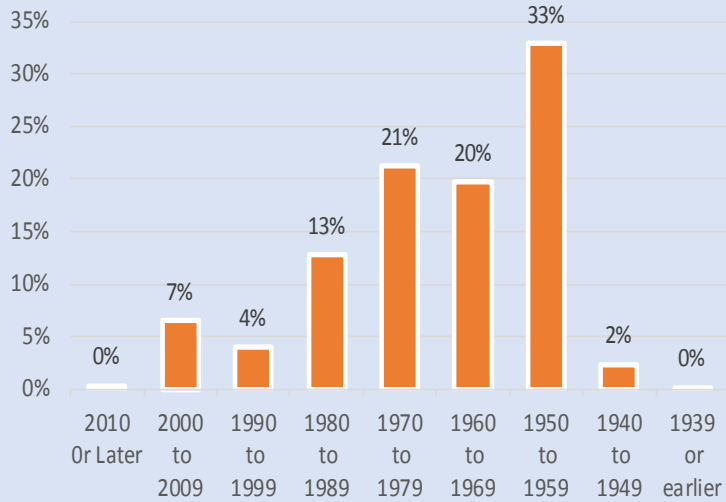
### Language Spoken at Home



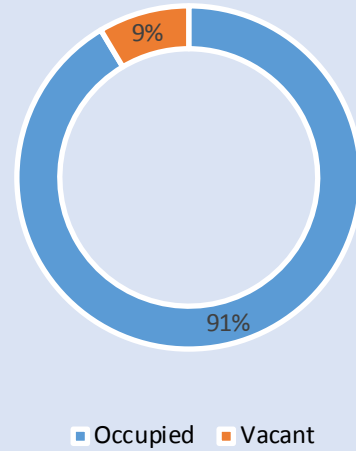
### Employment Status



### Housing Units by Year Built



### Housing Occupancy



Source: U.S. Census Bureau, 2000  
American Community Survey, 2011-2015 Estimates



**PLANNING &  
DEVELOPMENT  
DEPARTMENT**