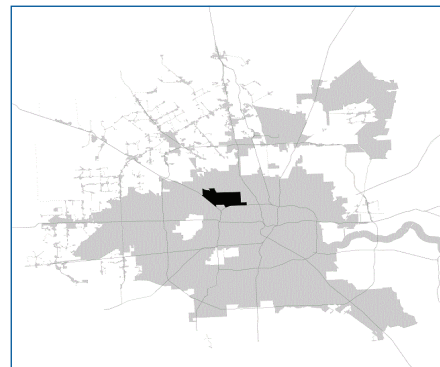


# SUPER

## Neighborhood

### RESOURCE ASSESSMENT



	Super Neighborhood		Houston	
Pop. characteristics	2000	2015	2000	2015
Total population	42,852	41,993	1,953,631	2,217,706
Persons per sq. mile	4,948	4,849	3,166	3,314
<b>Age of Population</b>				
Under 5 years	7%	9%	8%	8%
5- 17 years	16%	14%	19%	17%
18- 64 years	64%	64%	64%	65%
65 and over	13%	13%	9%	10%
<b>Ethnicity</b>				
Non Hispanic Whites	53%	46%	31%	26%
Non Hispanic Blacks	8%	6%	25%	22%
Hispanics	36%	45%	37%	44%
Non Hispanic Asians	2%	2%	6%	7%
Non Hispanic Others	1%	1%	1%	1%
<b>Income</b>				
Under \$25,000	27%	20%	33%	27%
\$25,001 to \$50,000	32%	24%	31%	25%
\$50,001 to \$100,000	30%	27%	24%	26%
Over \$100,001	11%	29%	12%	22%
<b>Median Household Income</b>	\$42,727	\$62,750	\$36,616	\$46,187
<b>Educational Status</b>				
No Diploma	22%	16%	30%	23%
High School Diploma	27%	24%	20%	23%
Some College	27%	24%	23%	24%
Bachelor's or Higher	24%	35%	27%	31%
<b>Housing and Households</b>				
Total housing units	18,194	18,698	782,378	909,336
Occupied	95%	89%	92%	88%
Vacant	5%	11%	8%	12%
Total households	17,327	16,702	717,945	799,714
Family households	10,894	10,044	457,549	491,778
Median Housing Value	\$85,141	\$178,672	\$79,300	\$131,700

### Description

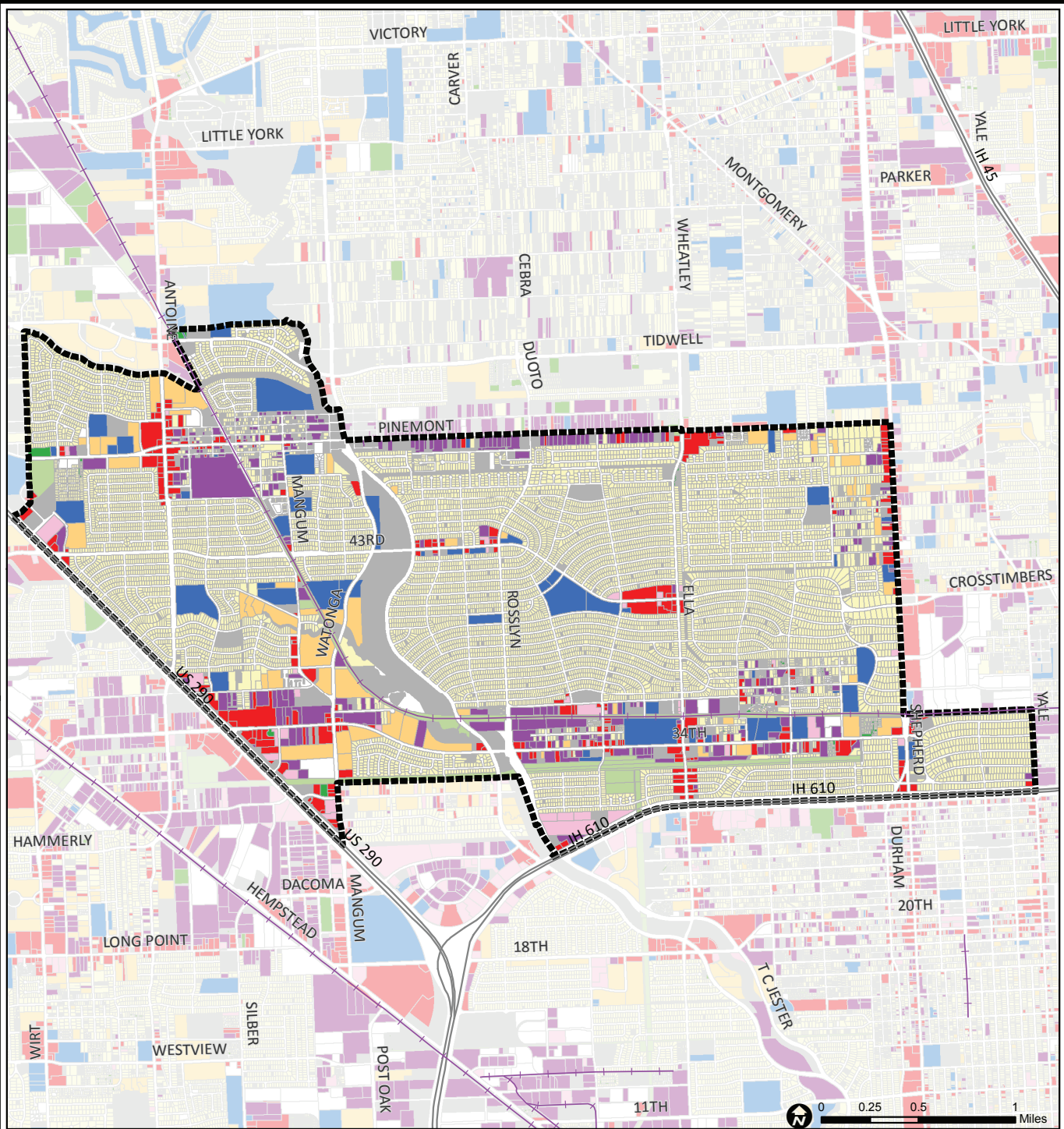
Oak Forest / Garden Oaks is located between Pinemont, Shepherd, the North Loop West and the Northwest Freeway (US 290). Just prior to WWII, Garden Oaks was laid out as a garden suburb with curvilinear streets and a full range of housing from cottages to mansions. Oak Forest was developed immediately after the war, and soon became the largest residential development in Houston at the time. Between the 1950s and the 1970s, Candlelight Estates, Shepherd Park and other surrounding subdivisions were developed. The area's thick pine trees and proximity to Loop 610 makes this community increasingly attractive to homebuyers. This community is deed-restricted and served by Houston ISD.

### Highlights

- ✓ Houston City Council Districts C & A
- ✓ Houston Independent School District
- ✓ Aldine Independent School District
- ✓ 5 Police beats (includes bordering beats)
- ✓ 5,541 acres (8.66 sq. miles)



**PLANNING &  
DEVELOPMENT  
DEPARTMENT**



## Central Northwest: Land Use

Freeway	Commercial	Parks and Open Space
Rail Road	Office	Undeveloped
Super Neighborhood Boundary	Industrial	Agricultural Production
Single-family Residential	Public and Institutional	Open Water
Multi-family Residential	Transportation and Utilities	Unknown

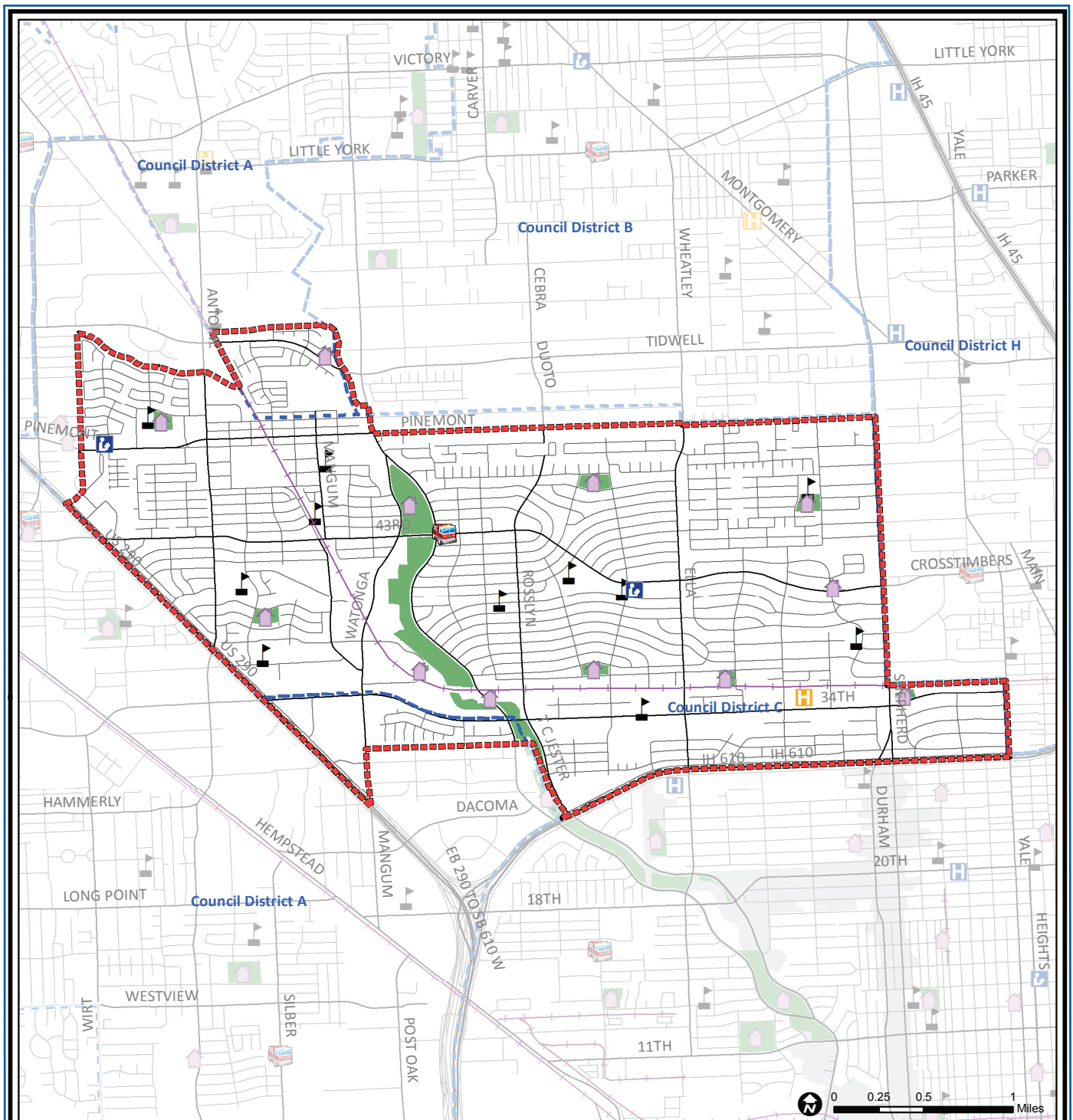
Source: City of Houston GIS Database,  
Harris County Appraisal District

Date: November 15, 2017

This map is made available for reference purposes only and should not be substituted for a survey product. The City of Houston will not accept liability of any kind in conjunction with its use.



**PLANNING &  
DEVELOPMENT  
DEPARTMENT**



## Central Northwest: Public Facilities

	Super Neighborhood Boundary		Airports		Rail Road
	Community Centers		Harris County Hospitals		Metro Rail Stations
	Fire Station		Private Hospitals		Metro Rail Line
	Police Station		Other Health Facilities		Parks
	School		Library		TIRZ

Source: City of Houston GIS Database

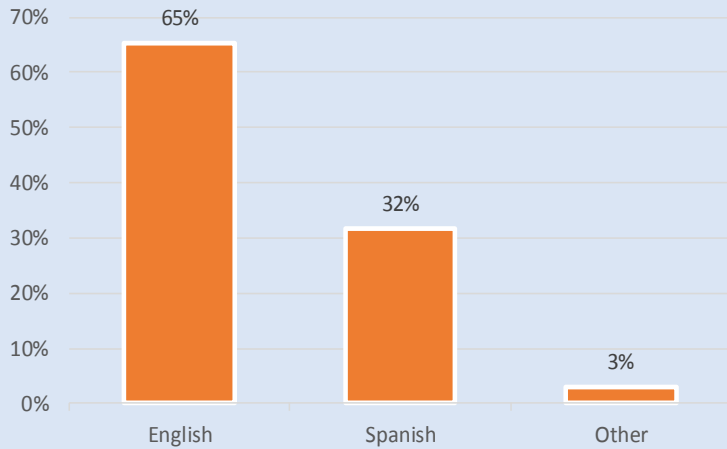
Date: October 2017

This map is made available for reference purposes only and should not be substituted for a survey product. The City of Houston will not accept liability of any kind in conjunction with its use.

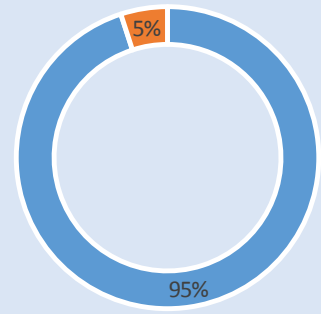


**PLANNING &  
DEVELOPMENT  
DEPARTMENT**

### Language Spoken at Home

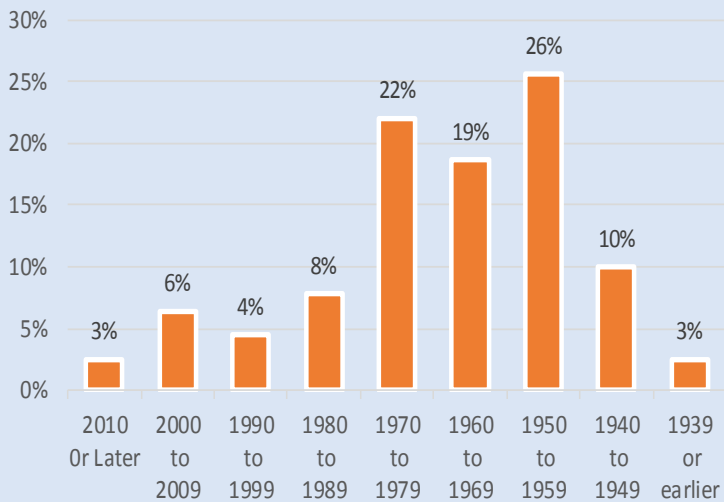


### Employment Status

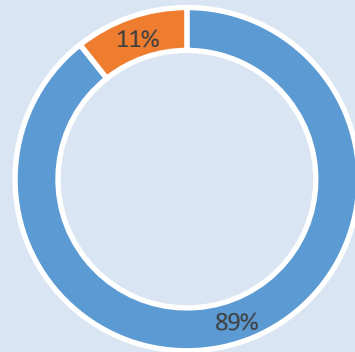


■ Employed ■ Unemployed

### Housing Units by Year Built



### Housing Occupancy



■ Occupied ■ Vacant

Source: U.S. Census Bureau, 2000  
American Community Survey, 2011-2015 Estimates



**PLANNING &  
DEVELOPMENT  
DEPARTMENT**