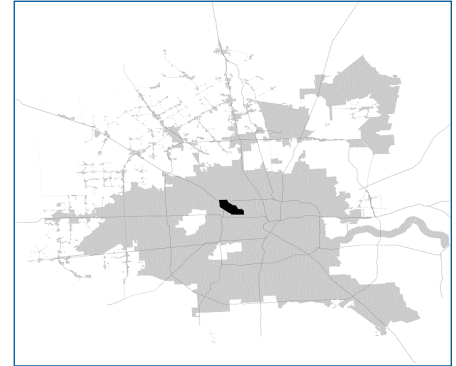


# SUPER

## Neighborhood

### RESOURCE ASSESSMENT



	Super Neighborhood		Houston	
Pop. characteristics	2000	2015	2000	2015
Total population	11,655	13,099	1,953,631	2,217,706
Persons per sq. mile	3,256	3,728	3,166	3,314
<b>Age of Population</b>				
Under 5 years	7%	8%	8%	8%
5- 17 years	12%	10%	19%	17%
18- 64 years	66%	72%	64%	65%
65 and over	15%	10%	9%	10%
<b>Ethnicity</b>				
Non Hispanic Whites	54%	46%	31%	26%
Non Hispanic Blacks	6%	6%	25%	22%
Hispanics	36%	41%	37%	44%
Non Hispanic Asians	2%	4%	6%	7%
Non Hispanic Others	1%	2%	1%	1%
<b>Income</b>				
Under \$25,000	30%	15%	33%	27%
\$25,001 to \$50,000	32%	27%	31%	25%
\$50,001 to \$100,000	28%	26%	24%	26%
Over \$100,001	11%	32%	12%	22%
<b>Median Household Income</b>	\$38,783	\$80,032	\$36,616	\$46,187
<b>Educational Status</b>				
No Diploma	26%	14%	30%	23%
High School Diploma	23%	18%	20%	23%
Some College	23%	21%	23%	24%
Bachelor's or Higher	28%	46%	27%	31%
<b>Housing and Households</b>				
Total housing units	5,705	6,621	782,378	909,336
Occupied	95%	93%	92%	88%
Vacant	5%	7%	8%	12%
Total households	5,418	6,154	717,945	799,714
Family households	2,880	3,106	457,549	491,778
Median Housing Value	\$120,541	\$248,098	\$79,300	\$131,700

### Description

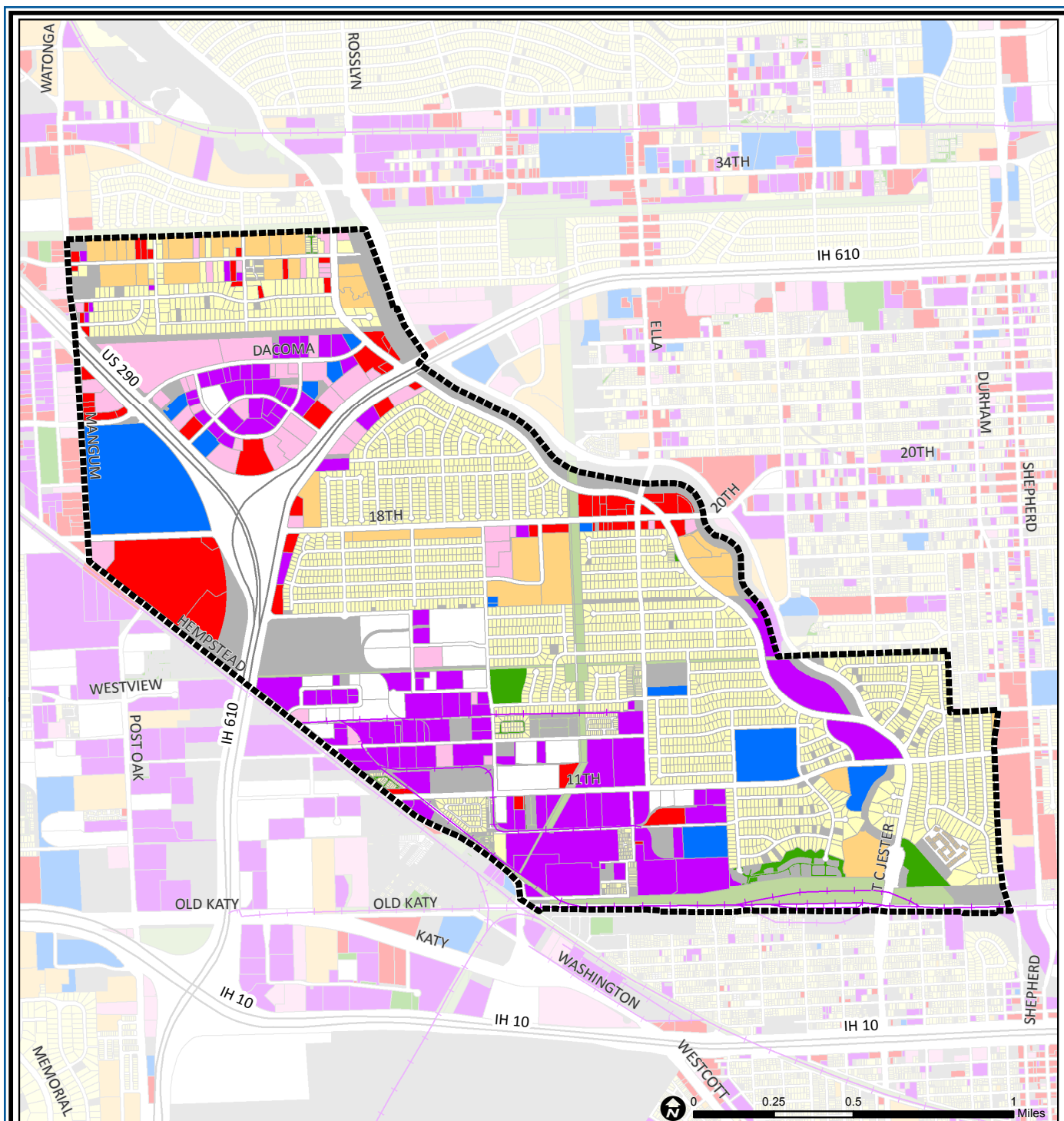
Lazy Brook and Timbergrove are deed-restricted subdivisions located along the wooded banks of White Oak Bayou in the near northwest quadrant of the city. In the pre-freeway period after World War II, this area remained undeveloped while suburban development was exploding in every other direction. This community of ranch style brick homes built in the 1950s and 1960s is easily accessible to Loop 610. The northwestern corner of the area, located outside of Loop 610 on both sides of US 290, includes Brookwood, a large lot subdivision, the Brookhollow business park, Northwest Mall and HISD's Delmar Stadium complex.

### Highlights

- ✓ Houston City Council Districts C & A
- ✓ Houston Independent School District
- ✓ 5 Police beats (includes bordering beats)
- ✓ 2,288 acres (3.58 sq. miles)



**PLANNING &  
DEVELOPMENT  
DEPARTMENT**



## Lazybrook / Timbergrove: Land Use

	Freeway		Commercial		Parks and Open Space
	Rail Road		Office		Undeveloped
	Super Neighborhood Boundary		Industrial		Agricultural Production
	Single-family Residential		Public and Institutional		Open Water
	Multi-family Residential		Transportation and Utilities		Unknown

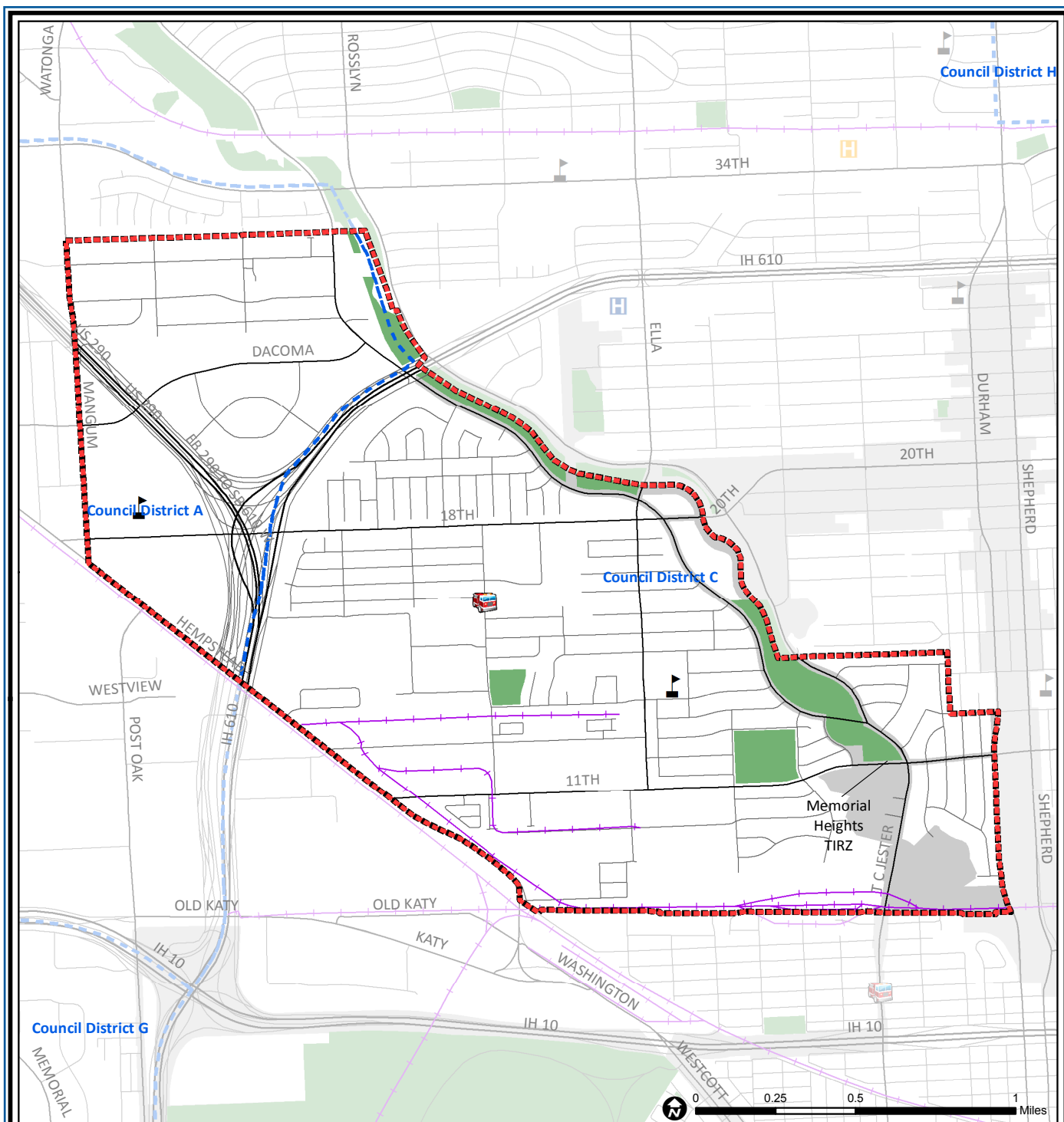
Source: City of Houston GIS Database,  
Harris County Appraisal District

Date: November 16, 2017

This map is made available for reference purposes only and should not be substituted for a survey product. The City of Houston will not accept liability of any kind in conjunction with its use.



**PLANNING &  
DEVELOPMENT  
DEPARTMENT**



## Lazybrook / Timbergrove: Public Facilities

Super Neighborhood Boundary

Community Centers

Fire Station

Police Station

School

Airports

Harris County Hospitals

Private Hospitals

Other Health Facilities

Library

Rail Road

Metro Rail Stations

Metro Rail Line

Parks

TIRZ

Source: City of Houston GIS Database

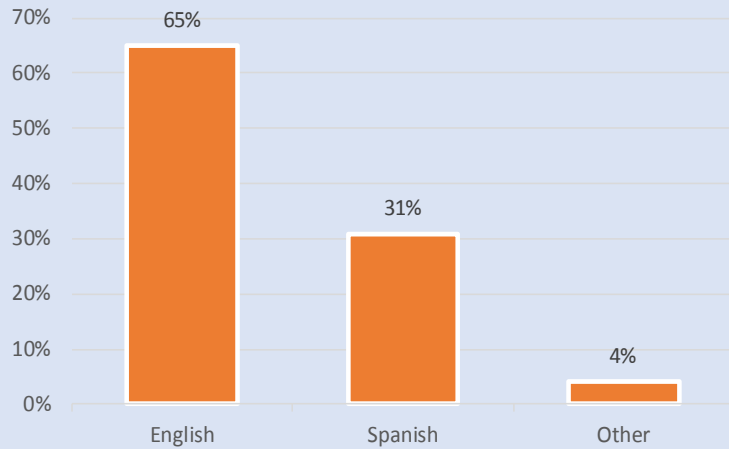
Date: October 2017

This map is made available for reference purposes only and should not be substituted for a survey product. The City of Houston will not accept liability of any kind in conjunction with its use.

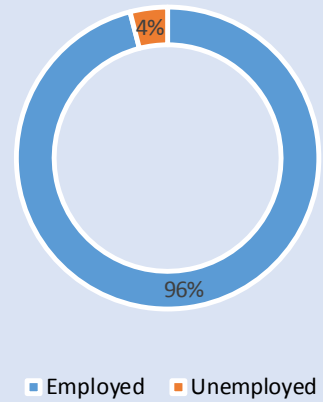


**PLANNING &  
DEVELOPMENT  
DEPARTMENT**

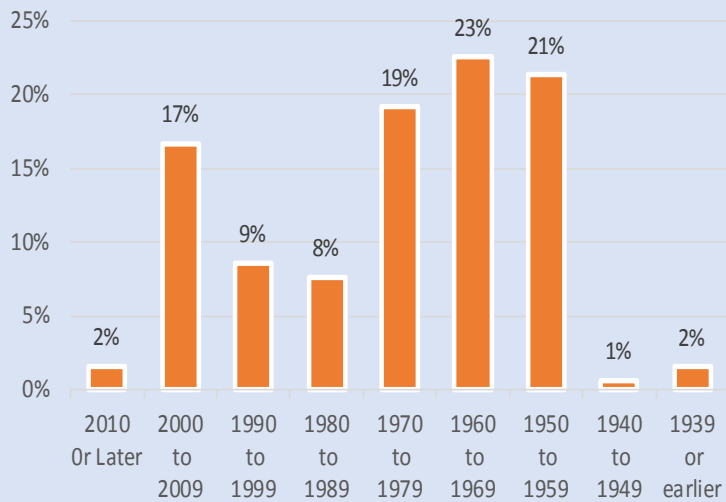
### Language Spoken at Home



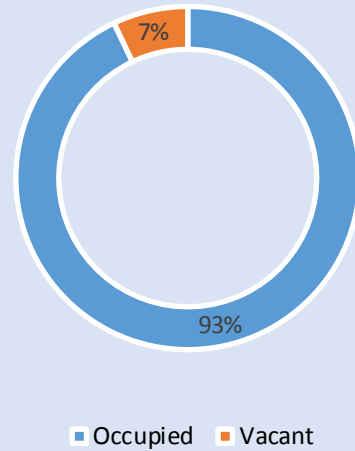
### Employment Status



### Housing Units by Year Built



### Housing Occupancy



Source: U.S. Census Bureau, 2000  
American Community Survey, 2011-2015 Estimates



**PLANNING &  
DEVELOPMENT  
DEPARTMENT**