

SUPER

Neighborhood

RESOURCE ASSESSMENT



	Super Neighborhood		Houston	
Pop. characteristics	2000	2015	2000	2015
Total population	44,957	47,604	1,953,631	2,217,706
Persons per sq. mile	4,182	4,820	3,166	3,314
Age of Population				
Under 5 years	5%	6%	8%	8%
5- 17 years	20%	21%	19%	17%
18- 64 years	59%	57%	64%	65%
65 and over	2%	16%	9%	10%
Ethnicity				
Non Hispanic Whites	78%	67%	31%	26%
Non Hispanic Blacks	2%	5%	25%	22%
Hispanics	9%	14%	37%	44%
Non Hispanic Asians	10%	11%	6%	7%
Non Hispanic Others	2%	3%	1%	1%
Income				
Under \$25,000	32%	10%	33%	27%
\$25,001 to \$50,000	28%	14%	31%	25%
\$50,001 to \$100,000	26%	24%	24%	26%
Over \$100,001	14%	51%	12%	22%
Median Household Income	\$53,582	\$94,927	\$36,616	\$46,187
Educational Status				
No Diploma	11%	5%	30%	23%
High School Diploma	12%	10%	20%	23%
Some College	14%	17%	23%	24%
Bachelor's or Higher	63%	68%	27%	31%
Housing and Households				
Total housing units	19,421	20,598	782,378	909,336
Occupied	95%	91%	92%	88%
Vacant	5%	9%	8%	12%
Total households	18,367	18,671	717,945	799,714
Family households	12,968	12,671	457,549	491,778
Median Housing Value	\$189,176	\$366,629	\$79,300	\$131,700

Description

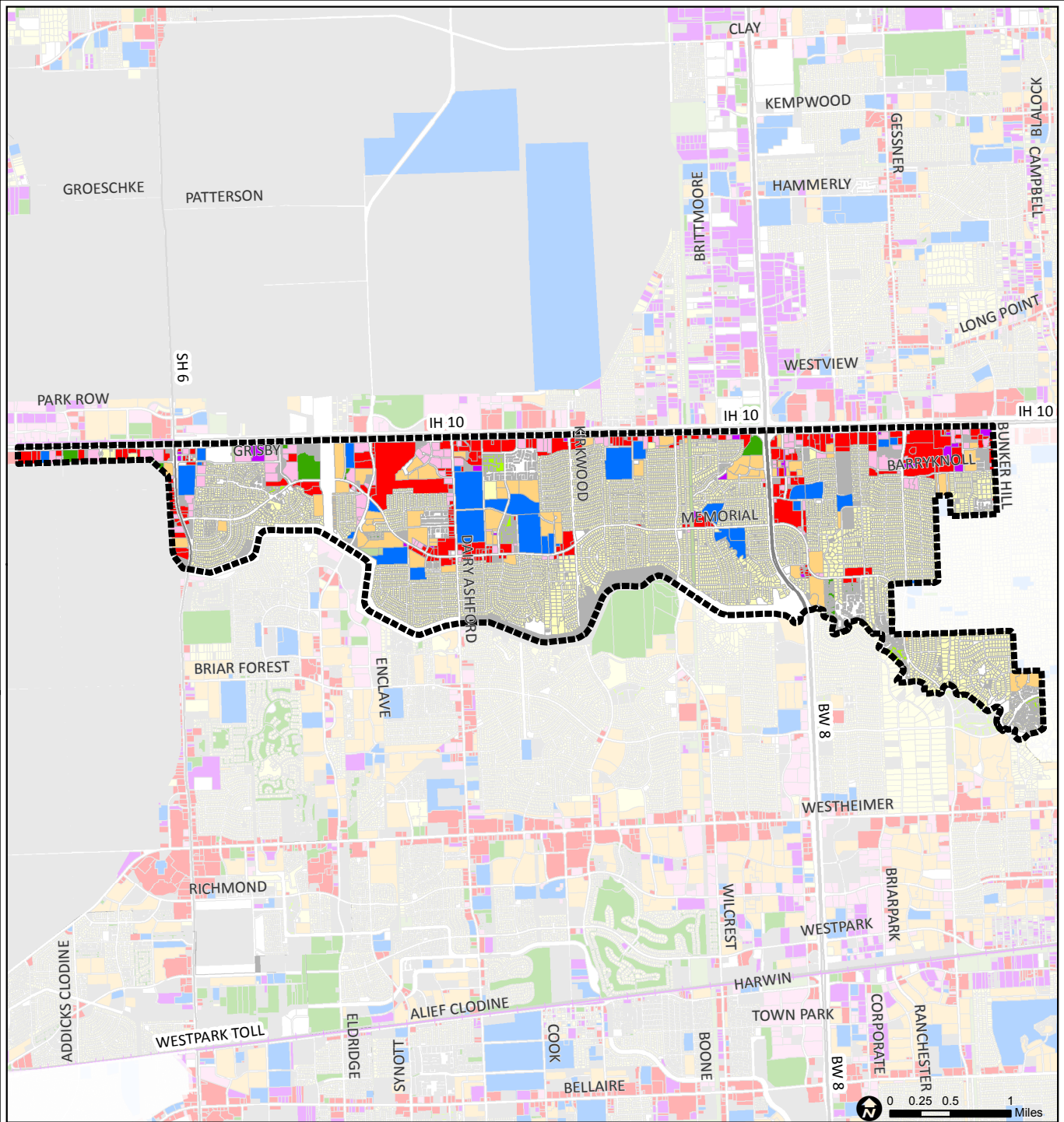
Memorial is one of Houston's most prestigious neighborhoods. Situated between Buffalo Bayou and I-10, west of several incorporated villages, the community takes its name from the main thoroughfare, Memorial Drive. The first significant residential development in this area began in the 1950s. Above-average income homebuyers were attracted to this heavily wooded area and to Spring Branch ISD and Katy ISD schools. Subdivisions range from comfortable mass-produced homes to million dollar estates. Development along I-10 on the northern portion of the area includes important office centers and massive retail districts at Town and Country and Memorial City.

Highlights

- ✓ Houston City Council District G
- ✓ Houston Independent School District
- ✓ Katy Independent School District
- ✓ Spring Branch Independent School District
- ✓ 6 Police beats (includes bordering beats)
- ✓ 6,878 acres (10.75 sq. miles)



**PLANNING &
DEVELOPMENT
DEPARTMENT**



Memorial: Land Use

Freeway	Commercial	Parks and Open Space
Rail Road	Office	Undeveloped
Super Neighborhood Boundary	Industrial	Agricultural Production
Single-family Residential	Public and Institutional	Open Water
Multi-family Residential	Transportation and Utilities	Unknown

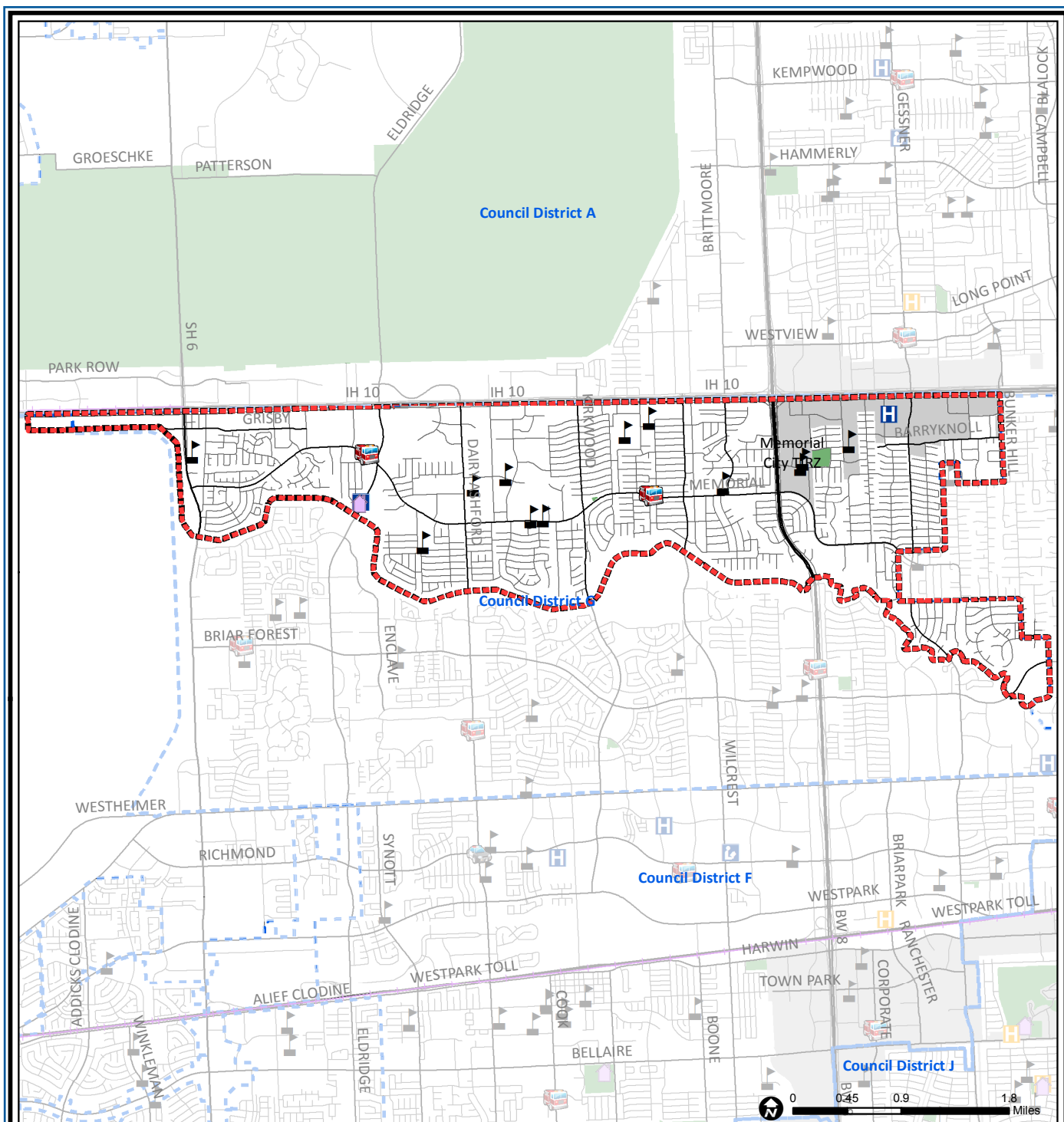
Source: City of Houston GIS Database,
Harris County Appraisal District

Date: November 16, 2017

This map is made available for reference purposes
only and should not be substituted for a survey
product. The City of Houston will not accept
liability of any kind in conjunction with its use.



**PLANNING &
DEVELOPMENT
DEPARTMENT**



Memorial: Public Facilities

	Super Neighborhood Boundary		Airports		Rail Road
	Community Centers		Harris County Hospitals		Metro Rail Stations
	Fire Station		Private Hospitals		Metro Rail Line
	Police Station		Other Health Facilities		Parks
	School		Library		TIRZ

Source: City of Houston GIS Database

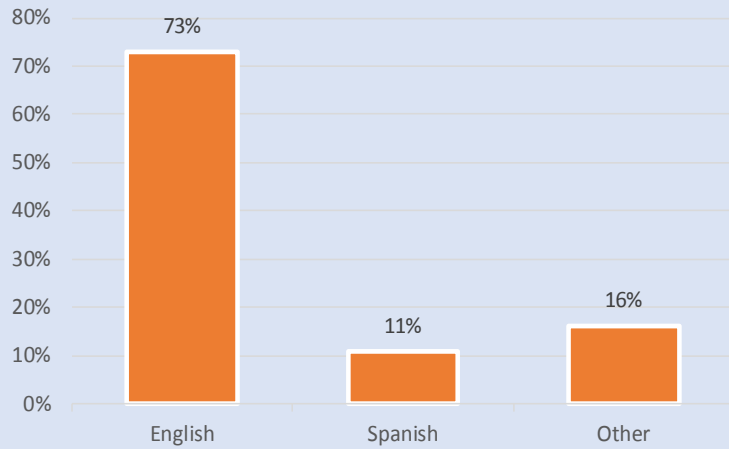
Date: October 2017

This map is made available for reference purposes only and should not be substituted for a survey product. The City of Houston will not accept liability of any kind in conjunction with its use.

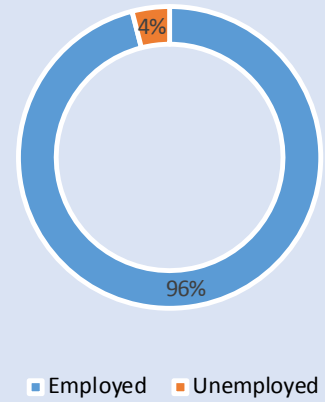


**PLANNING &
DEVELOPMENT
DEPARTMENT**

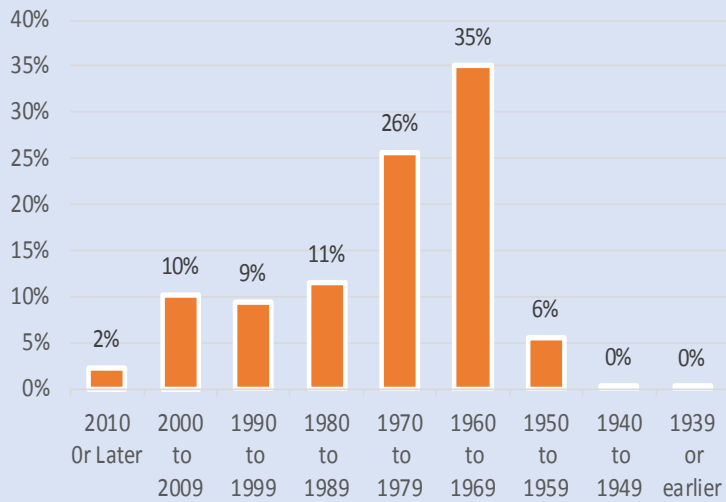
Language Spoken at Home



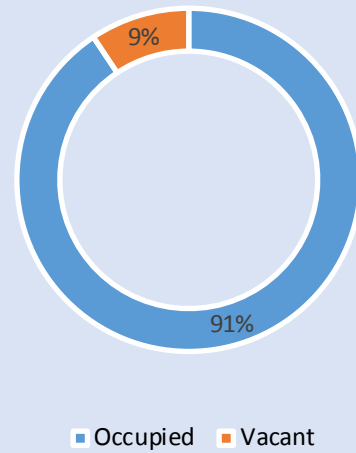
Employment Status



Housing Units by Year Built



Housing Occupancy



Source: U.S. Census Bureau, 2000
American Community Survey, 2011-2015 Estimates



**PLANNING &
DEVELOPMENT
DEPARTMENT**