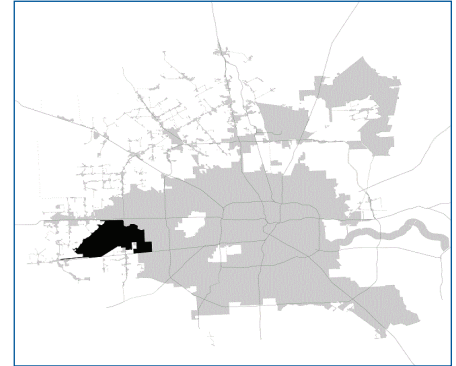


SUPER

Neighborhood

RESOURCE ASSESSMENT



	Super Neighborhood		Houston	
Pop. characteristics	2000	2015	2000	2015
Total population	40,013	72,347	1,953,631	2,217,706
Persons per sq. mile	1,356	2,452	3,166	3,314
Age of Population				
Under 5 years	7%	8%	8%	8%
5- 17 years	14%	16%	19%	17%
18- 64 years	72%	67%	64%	65%
65 and over	7%	9%	9%	10%
Ethnicity				
Non Hispanic Whites	54%	36%	31%	26%
Non Hispanic Blacks	14%	22%	25%	22%
Hispanics	16%	23%	37%	44%
Non Hispanic Asians	12%	17%	6%	7%
Non Hispanic Others	3%	3%	1%	1%
Income				
Under \$25,000	18%	18%	33%	27%
\$25,001 to \$50,000	33%	21%	31%	25%
\$50,001 to \$100,000	31%	29%	24%	26%
Over \$100,001	17%	31%	12%	22%
Median Household Income	\$50,857	\$79,787	\$36,616	\$46,187
Educational Status				
No Diploma	7%	6%	30%	23%
High School Diploma	14%	17%	20%	23%
Some College	33%	26%	23%	24%
Bachelor's or Higher	46%	51%	27%	31%
Housing and Households				
Total housing units	21,312	33,899	782,378	909,336
Occupied	88%	90%	92%	88%
Vacant	12%	10%	8%	12%
Total households	18,727	30,312	717,945	799,714
Family households	9,906	17,907	457,549	491,778
Median Housing Value	\$124,196	\$253,003	\$79,300	\$131,700

Description

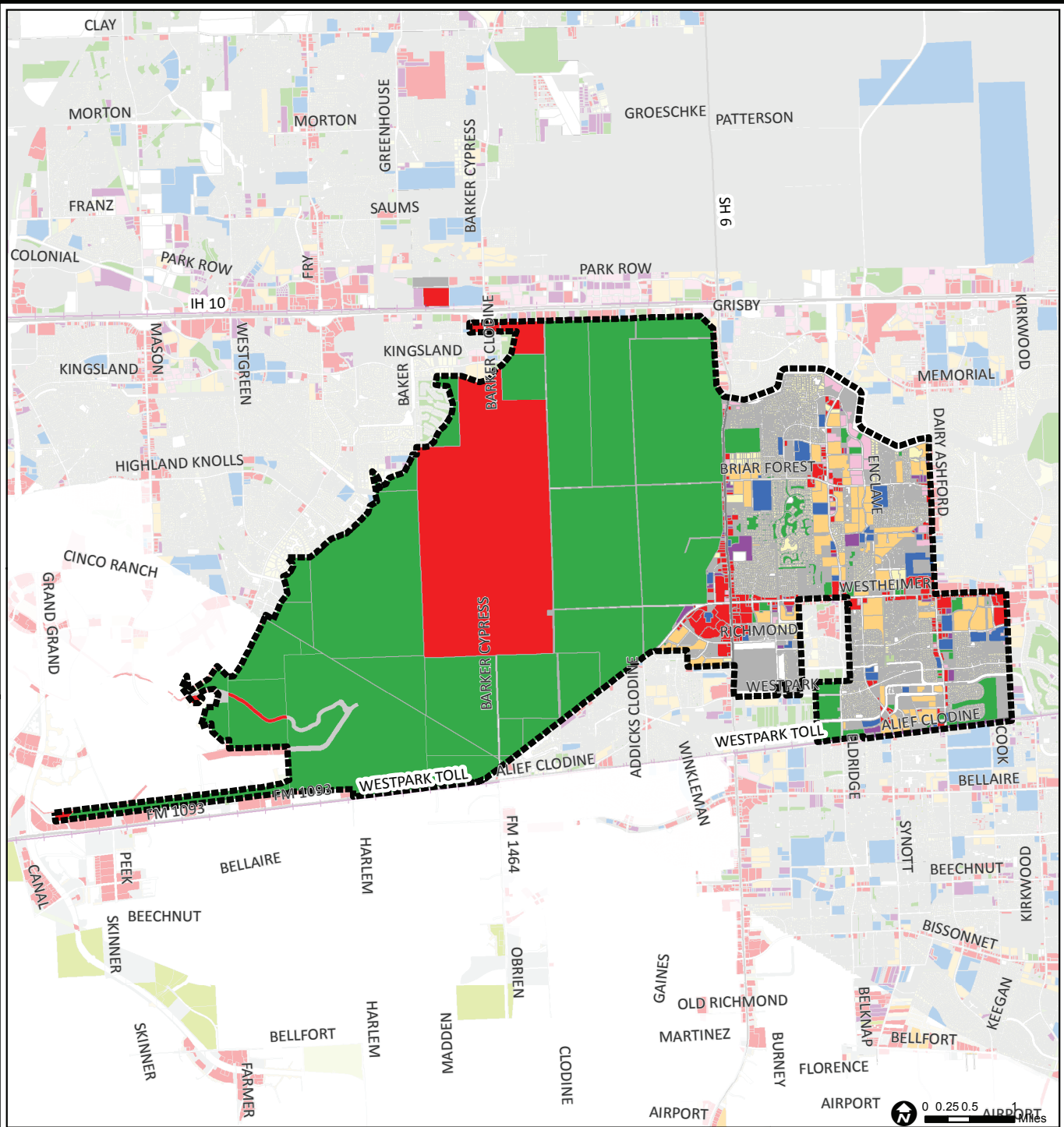
Eldridge West Oaks is located south of Interstate 10 in the western part of the City and includes West Oaks Mall, Barker Reservoir, and a developing area centered by Eldridge Parkway. Barker Reservoir covers over half of the area. The remaining half is a mix of multi-family and single-family residential uses and vacant land. A number of single-family gated communities, built around man-made lakes, have been developed in the area. The area is served by Houston Independent School District north of Westheimer Road and by Alief Independent School District on the south side.

Highlights

- ✓ Houston City Council Districts F & G
- ✓ Houston Independent School District
- ✓ Alief Independent School District
- ✓ Katy Independent School District
- ✓ Spring Branch Independent School District
- ✓ Fort Bend Independent School District
- ✓ 7 Police beats (includes bordering beats)
- ✓ 18,871 acres (29.5 sq. miles)



**PLANNING &
DEVELOPMENT
DEPARTMENT**



Eldridge / West Oaks: Land Use

	Freeway		Commercial		Parks and Open Space
	Rail Road		Office		Undeveloped
	Super Neighborhood Boundary		Industrial		Agricultural Production
	Single-family Residential		Public and Institutional		Open Water
	Multi-family Residential		Transportation and Utilities		Unknown

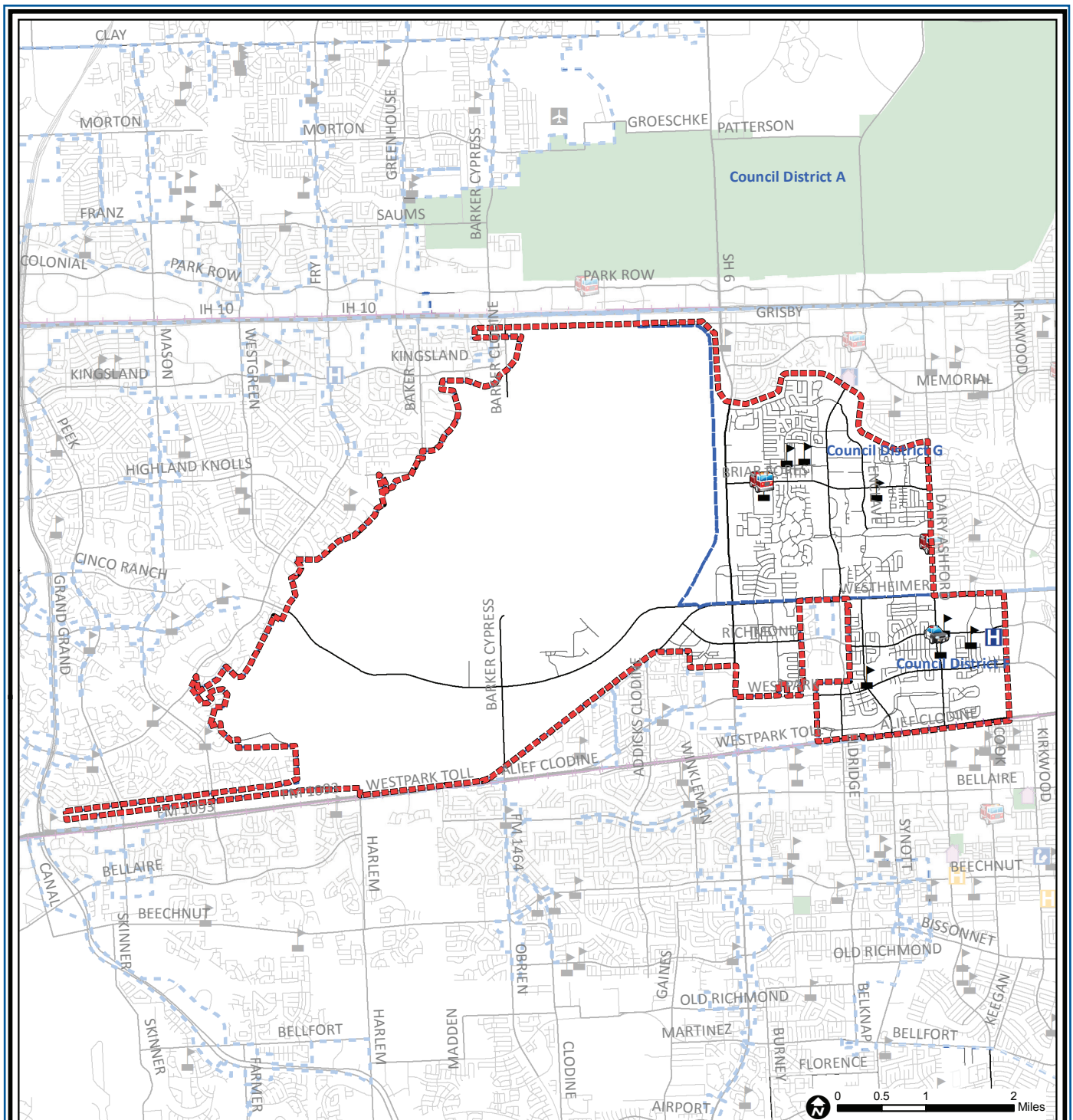
Source: City of Houston GIS Database,
Harris County Appraisal District

Date: November 20, 2017

This map is made available for reference purposes only and should not be substituted for a survey product. The City of Houston will not accept liability of any kind in conjunction with its use.



**PLANNING &
DEVELOPMENT
DEPARTMENT**



Eldridge / West Oaks: Public Facilities

	Super Neighborhood Boundary		Airports		Rail Road
	Community Centers		Harris County Hospitals		Metro Rail Stations
	Fire Station		Private Hospitals		Metro Rail Line
	Police Station		Other Health Facilities		Parks
	School		Library		TIRZ

Source: City of Houston GIS Database

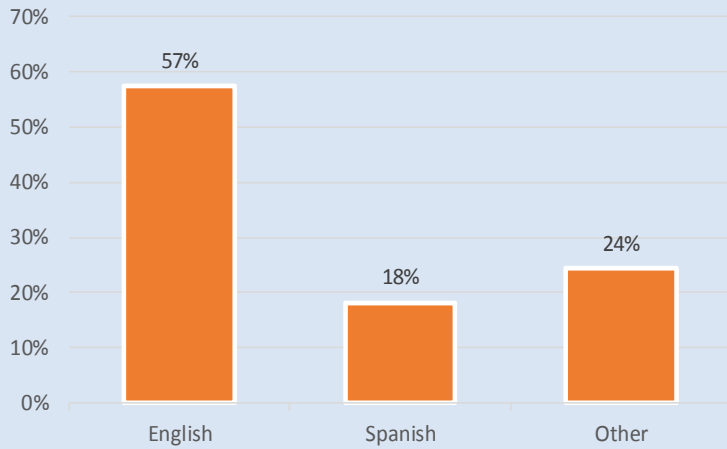
Date: October 2017

This map is made available for reference purposes only and should not be substituted for a survey product. The City of Houston will not accept liability of any kind in conjunction with its use.

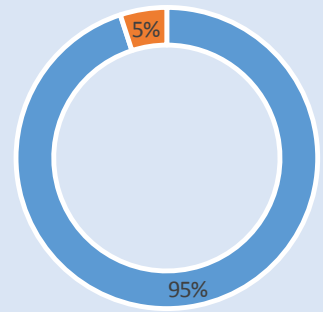


**PLANNING &
DEVELOPMENT
DEPARTMENT**

Language Spoken at Home

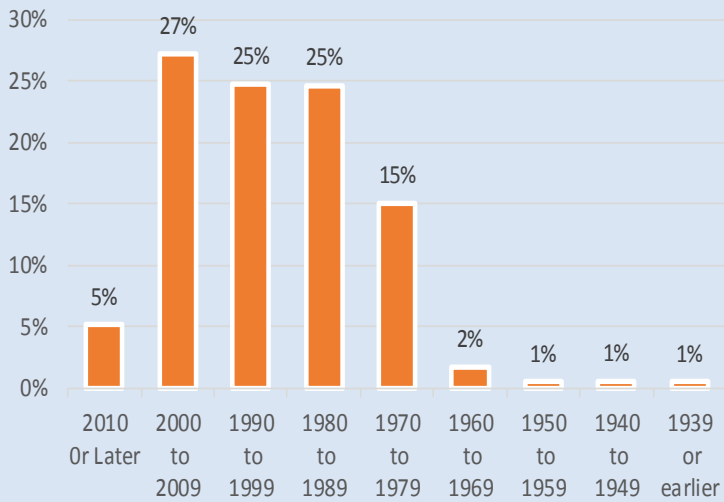


Employment Status

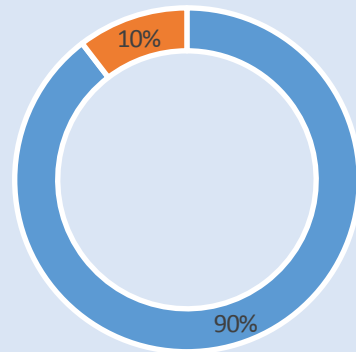


■ Employed ■ Unemployed

Housing Units by Year Built



Housing Occupancy



■ Occupied ■ Vacant

Source: U.S. Census Bureau, 2000
American Community Survey, 2011-2015 Estimates



**PLANNING &
DEVELOPMENT
DEPARTMENT**