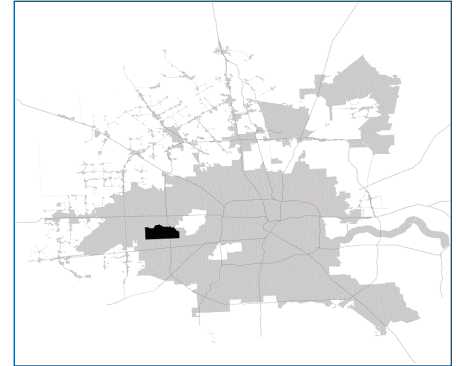


# SUPER

## Neighborhood

### RESOURCE ASSESSMENT



	Super Neighborhood		Houston	
Pop. characteristics	2000	2015	2000	2015
Total population	42,100	43,018	1,953,631	2,217,706
Persons per sq. mile	6,256	6,396	3,166	3,314
<b>Age of Population</b>				
Under 5 years	8%	7%	8%	8%
5- 17 years	14%	16%	19%	17%
18- 64 years	70%	64%	64%	65%
65 and over	8%	13%	9%	10%
<b>Ethnicity</b>				
Non Hispanic Whites	63%	43%	31%	26%
Non Hispanic Blacks	10%	21%	25%	22%
Hispanics	18%	26%	37%	44%
Non Hispanic Asians	7%	7%	6%	7%
Non Hispanic Others	2%	3%	1%	1%
<b>Income</b>				
Under \$25,000	16%	20%	33%	27%
\$25,001 to \$50,000	29%	22%	31%	25%
\$50,001 to \$100,000	31%	28%	24%	26%
Over \$100,001	23%	30%	12%	22%
<b>Median Household Income</b>	\$59,211	\$76,462	\$36,616	\$46,187
<b>Educational Status</b>				
No Diploma	7%	9%	30%	23%
High School Diploma	12%	13%	20%	23%
Some College	28%	30%	23%	24%
Bachelor's or Higher	53%	48%	27%	31%
<b>Housing and Households</b>				
Total housing units	19,996	20,499	782,378	909,336
Occupied	94%	88%	92%	88%
Vacant	6%	12%	8%	12%
Total households	18,751	18,048	717,945	799,714
Family households	11,121	11,204	457,549	491,778
Median Housing Value	\$143,310	\$222,903	\$79,300	\$131,700

### Description

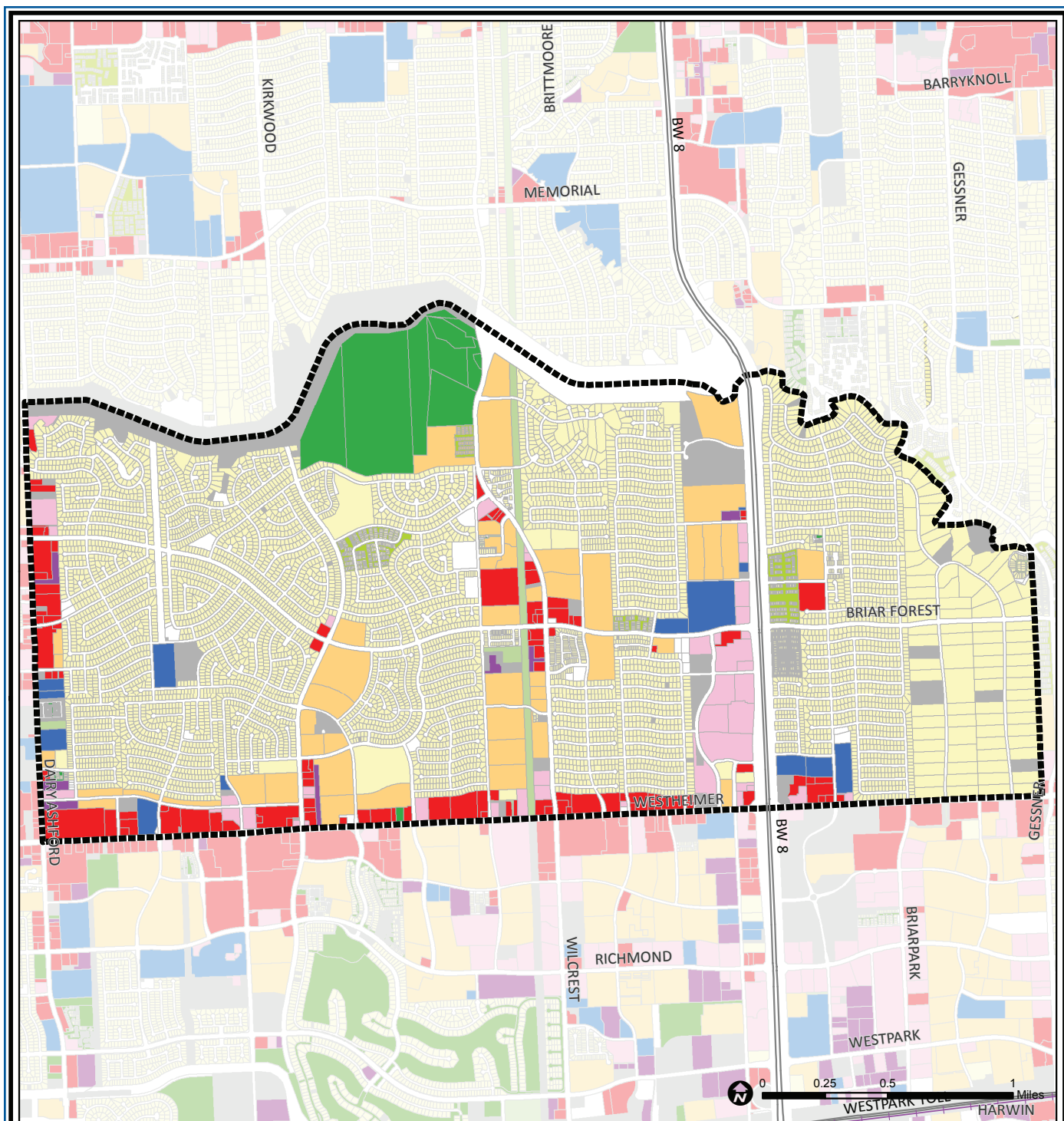
The Briarforest Area is bound by Buffalo Bayou and Gessner, Westheimer and Dairy Ashford roads. A significant feature of this neighborhood is a large wooded area east of Wilcrest Drive and adjacent to Buffalo Bayou on the north. The area is largely single-family residential with some multi-family, patio and townhomes located along the area's major thoroughfares. Offices complexes are located along Sam Houston Parkway which passes through the easternmost sector of the area.

### Highlights

- ✓ Houston City Council District G
- ✓ Houston Independent School District
- ✓ Spring Branch Independent School District
- ✓ Alief Independent School District
- ✓ 6 Police beats (includes bordering beats)
- ✓ 4,305 acres (6.73 sq. miles)



**PLANNING &  
DEVELOPMENT  
DEPARTMENT**



## Briar Forest: Land Use

	Freeway		Commercial		Parks and Open Space
	Rail Road		Office		Undeveloped
	Super Neighborhood Boundary		Industrial		Agricultural Production
	Single-family Residential		Public and Institutional		Open Water
	Multi-family Residential		Transportation and Utilities		Unknown

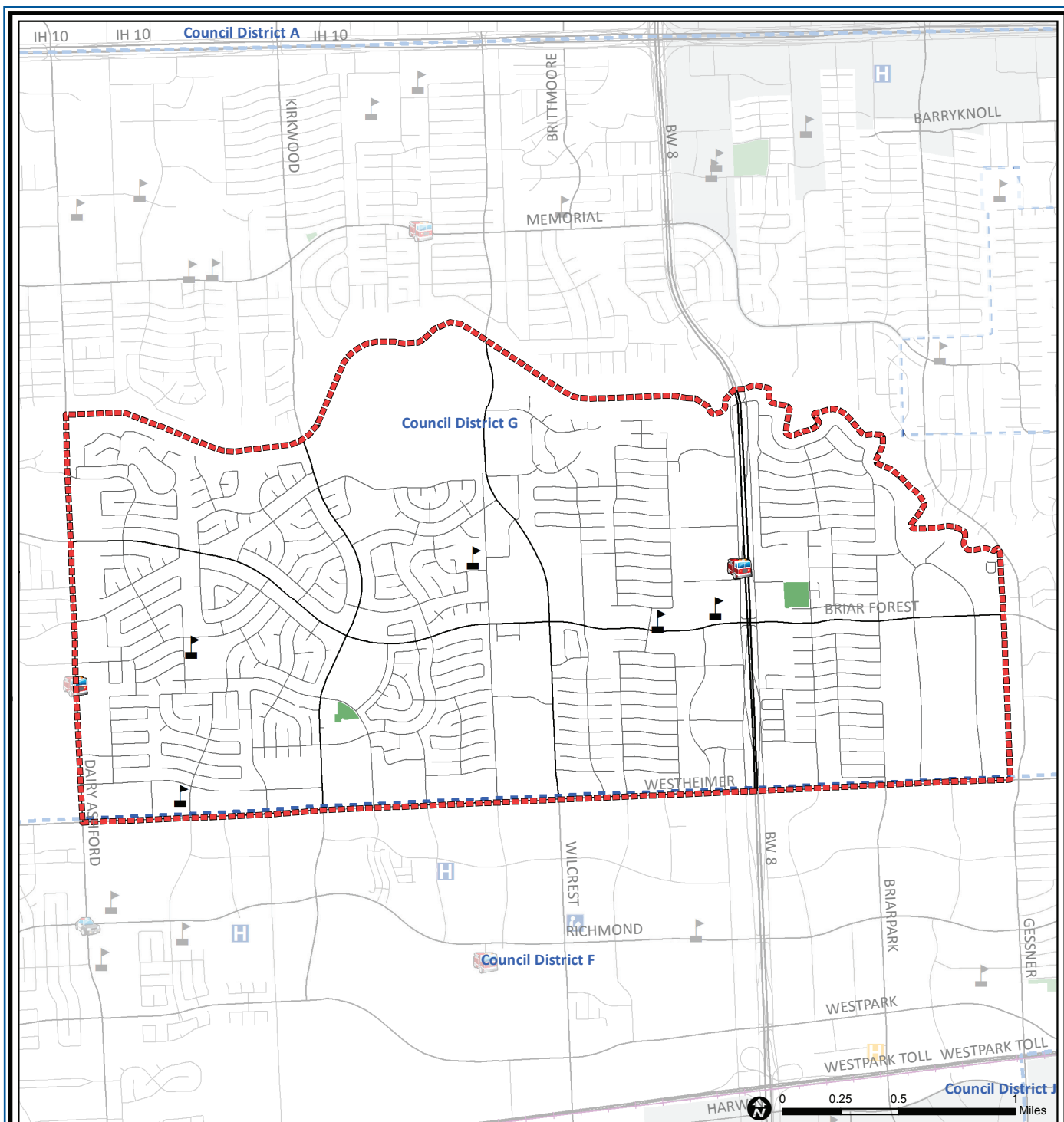
Source: City of Houston GIS Database,  
Harris County Appraisal District

Date: October 24, 2017

This map is made available for reference purposes only and should not be substituted for a survey product. The City of Houston will not accept liability of any kind in conjunction with its use.



**PLANNING &  
DEVELOPMENT  
DEPARTMENT**



## Briar Forest: Public Facilities

	Super Neighborhood Boundary		Airports		Rail Road
	Community Centers		Harris County Hospitals		Metro Rail Stations
	Fire Station		Private Hospitals		Metro Rail Line
	Police Station		Other Health Facilities		Parks
	School		Library		TIRZ

Source: City of Houston GIS Database

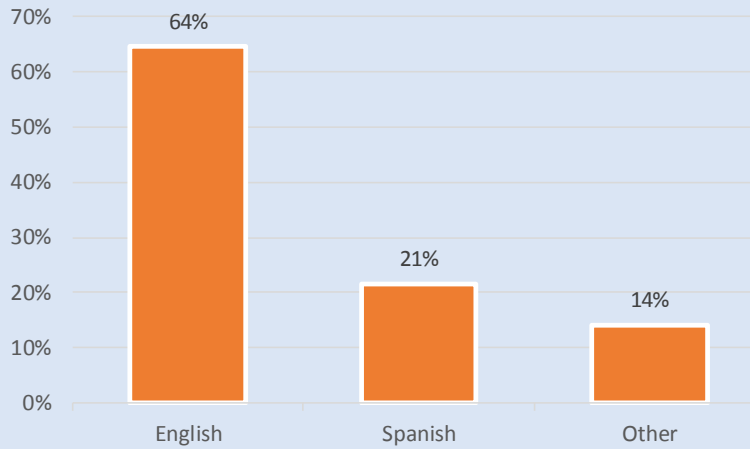
Date: October 2017

This map is made available for reference purposes only and should not be substituted for a survey product. The City of Houston will not accept liability of any kind in conjunction with its use.

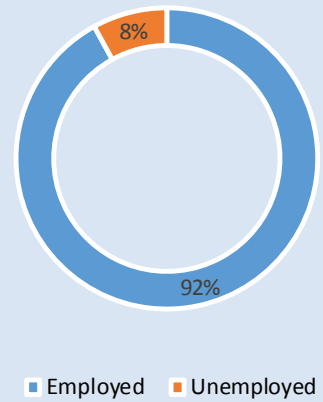


**PLANNING &  
DEVELOPMENT  
DEPARTMENT**

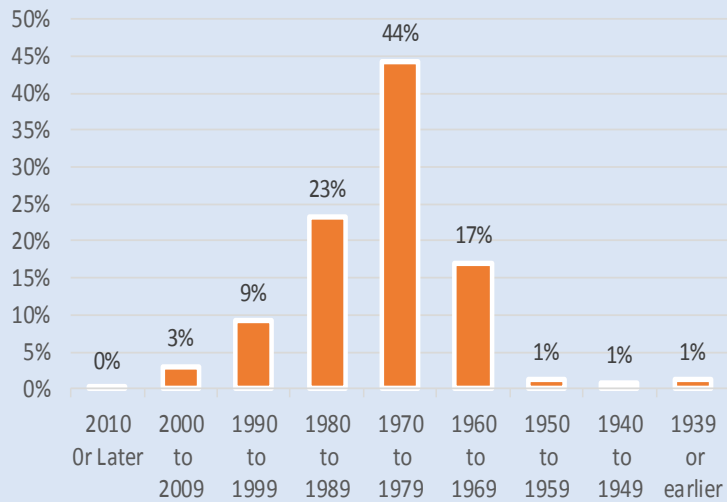
### Language Spoken at Home



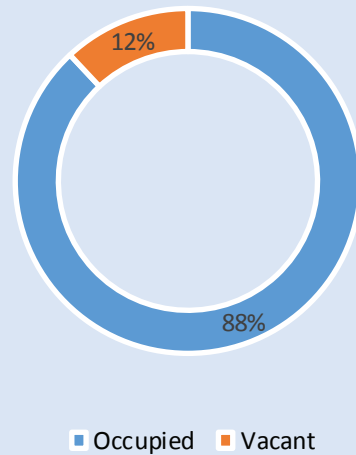
### Employment Status



### Housing Units by Year Built



### Housing Occupancy



Source: U.S. Census Bureau, 2000  
American Community Survey, 2011-2015 Estimates



**PLANNING &  
DEVELOPMENT  
DEPARTMENT**