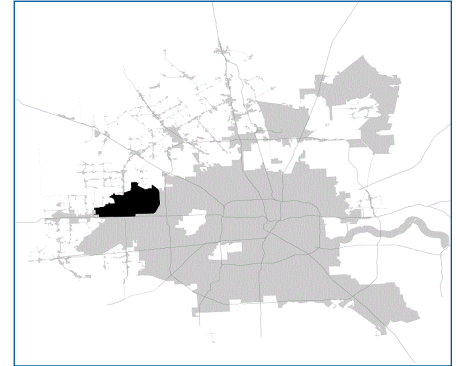


# SUPER

## Neighborhood

### RESOURCE ASSESSMENT



#### Pop. characteristics

	2000	2017	2000	2017
Total population	4,528	20,694	1,953,631	2,267,336
Persons per sq. mile	193	883	3,166	3,394

#### Age of Population

Under 5 years	8%	6%	8%	8%
5- 17 years	15%	18%	19%	17%
18- 64 years	74%	68%	64%	65%
65 and over	3%	8%	9%	10%

#### Ethnicity

Non Hispanic Whites	65%	40%	31%	25%
Non Hispanic Blacks	7%	19%	25%	22%
Hispanics	20%	28%	37%	44%
Non Hispanic Asians	6%	12%	6%	7%
Non Hispanic Others	2%	1%	1%	2%

#### Income

Under \$25,000	18%	9%	33%	26%
\$25,000 to \$49,999	36%	27%	31%	25%
\$50,000 to \$99,999	35%	31%	24%	26%
Over \$100,000	11%	33%	12%	23%

<b>Median Household Income</b>	\$43,734	\$82,869	\$36,616	\$49,399
--------------------------------	----------	----------	----------	----------

#### Educational Status

No Diploma	12%	7%	30%	22%
High School Diploma	17%	18%	20%	23%
Some College	31%	33%	23%	23%
Bachelor's or Higher	40%	42%	27%	32%

#### Housing and Households

Total housing units	8,548	8,553	782,378	943,183
Occupied	84%	90%	92%	89%
Vacant	16%	10%	8%	11%
Total households	2,154	7,730	717,945	838,950
Family households	1,068	5,320	457,549	491,778
Median Housing Value	\$82,327	\$221,710	\$79,300	\$149,000

#### Description

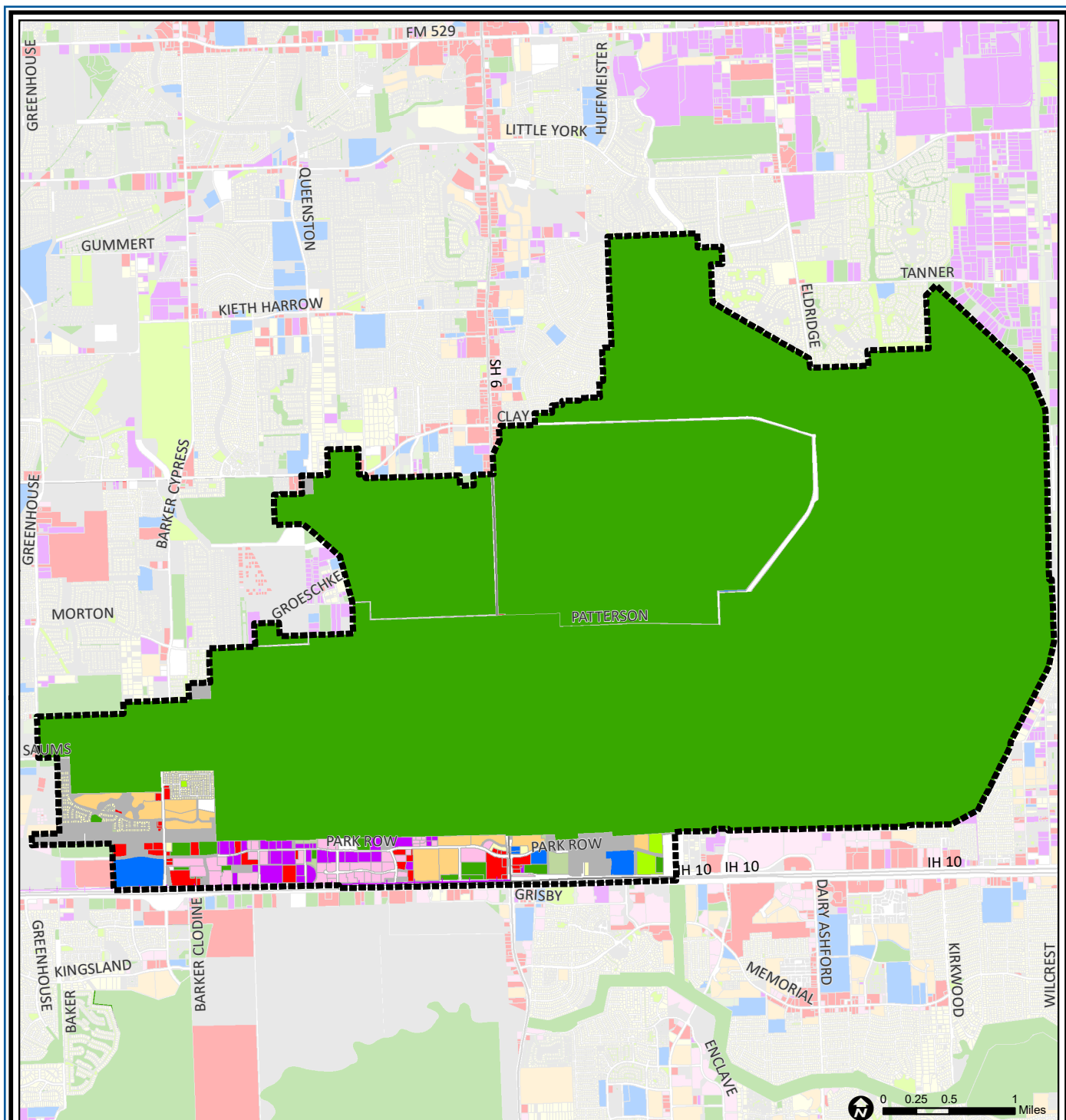
Addicks Park Ten is located in the westernmost part of the City, north of Interstate 10. Most of the area is made up of the Addicks Reservoir, a large flood control dam. The surrounding area, which is most subject to flooding, is being developed for recreational uses, including a golf course, a wildlife sanctuary and soccer fields. Park Ten, an area between I-10 and the Reservoir, is developed as office, commercial, and light industrial. Residential development in the area includes approximately 9,000 people residing in two single-family subdivisions and several apartment complexes.

#### Highlights

- ✓ Houston City Council District A
- ✓ Katy Independent School District
- ✓ Spring Independent School District
- ✓ Cypress-Fairbanks Independent School District
- ✓ 5 Police beats (includes bordering beats)
- ✓ 15,030 acres (23.5 sq. miles)



**PLANNING &  
DEVELOPMENT  
DEPARTMENT**



## Addicks Park Ten: Land Use

Freeway	Commercial	Parks and Open Space
Rail Road	Office	Undeveloped
Super Neighborhood Boundary	Industrial	Agricultural Production
Single-family Residential	Public and Institutional	Open Water
Multi-family Residential	Transportation and Utilities	Unknown

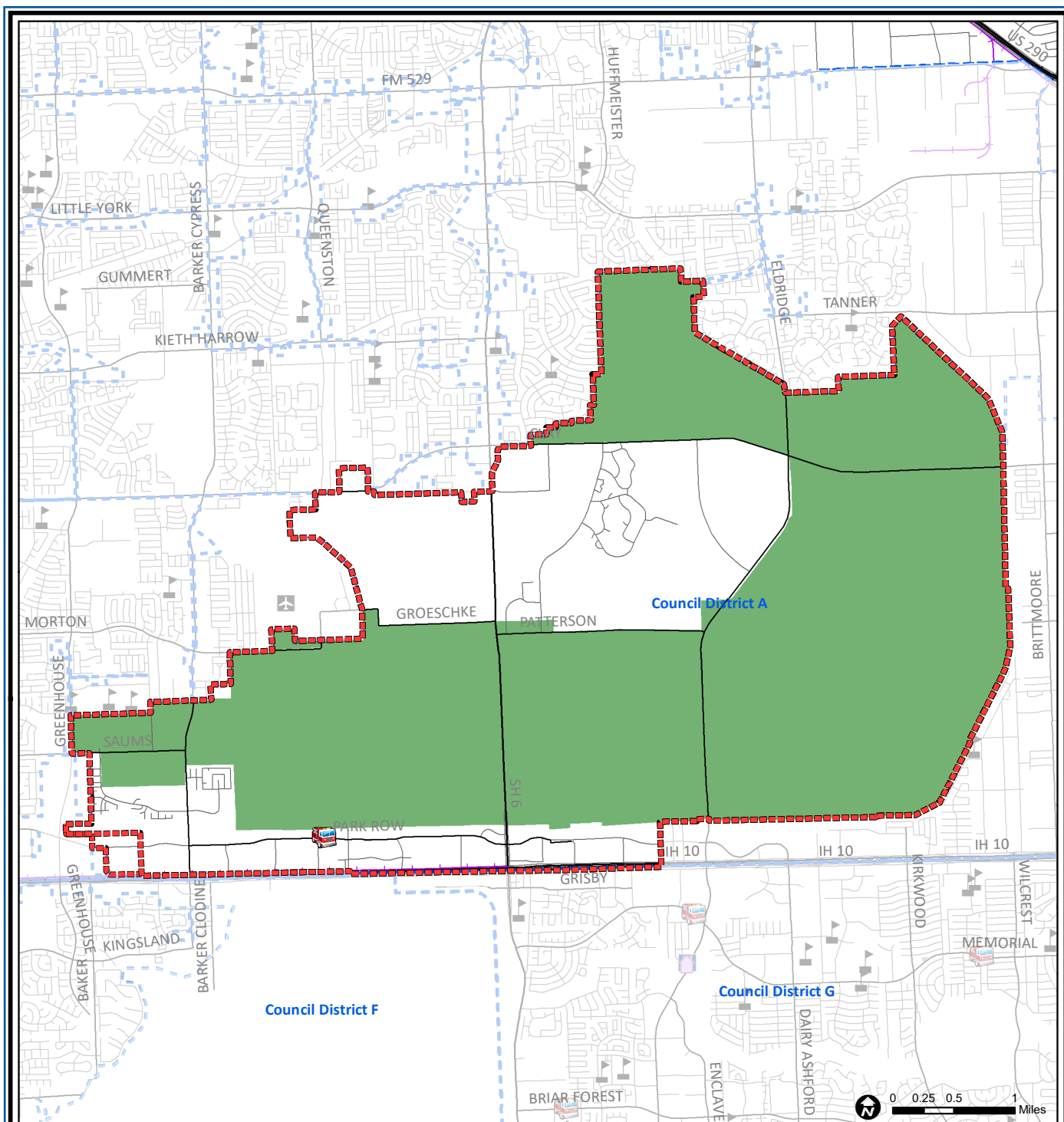
Source: City of Houston GIS Database,  
Harris County Appraisal District

Date: May 20, 2019

This map is made available for reference purposes only and should not be substituted for a survey product. The City of Houston will not accept liability of any kind in conjunction with its use.



**PLANNING &  
DEVELOPMENT  
DEPARTMENT**



## Addicks Park Ten: Public Facilities

Source: City of Houston GIS Database

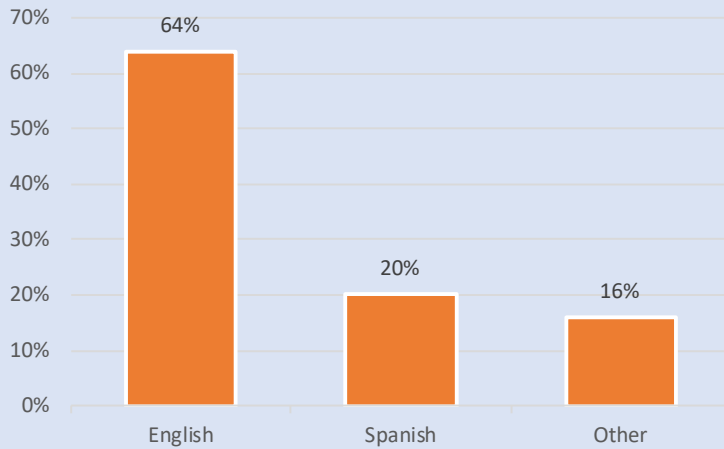
Date: May 2019

This map is made available for reference purposes only and should not be substituted for a survey product. The City of Houston will not accept liability of any kind in conjunction with its use.

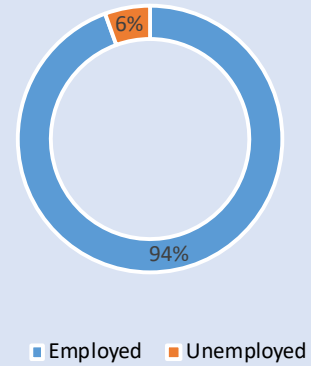


**PLANNING &  
DEVELOPMENT  
DEPARTMENT**

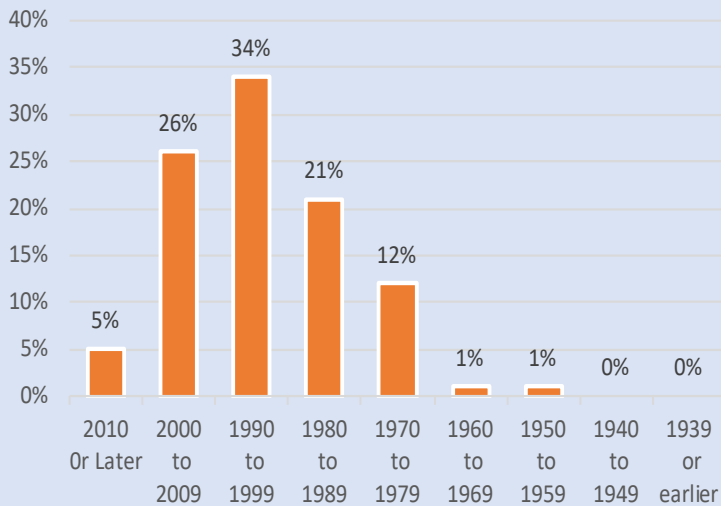
### Language Spoken at Home



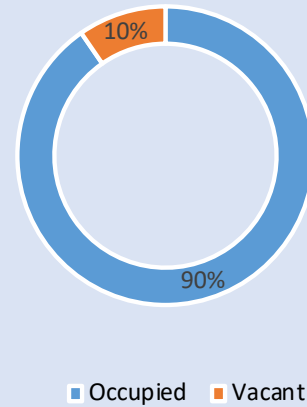
### Employment Status



### Housing Units by Year Built



### Housing Occupancy



Source: U.S. Census Bureau, 2000  
American Community Survey, 2013-2017 Estimates



**PLANNING &  
DEVELOPMENT  
DEPARTMENT**