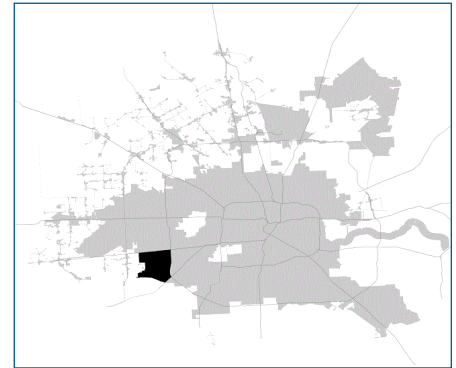


SUPER

Neighborhood

RESOURCE ASSESSMENT



	Super Neighborhood		Houston	
Pop. characteristics	2000	2017	2000	2017
Total population	41,820	119,598	1,953,631	2,267,336
Persons per sq. mile	2,962	8,106	3,166	3,394
Age of Population				
Under 5 years	9%	7%	8%	8%
5- 17 years	23%	20%	19%	17%
18- 64 years	63%	64%	64%	65%
65 and over	5%	9%	9%	10%
Ethnicity				
Non Hispanic Whites	17%	7%	31%	25%
Non Hispanic Blacks	28%	24%	25%	22%
Hispanics	31%	49%	37%	44%
Non Hispanic Asians	21%	19%	6%	7%
Non Hispanic Others	3%	1%	1%	2%
Income				
Under \$25,000	31%	29%	33%	26%
\$25,000 to \$49,999	38%	32%	31%	25%
\$50,000 to \$99,999	25%	27%	24%	26%
Over \$100,000	6%	12%	12%	23%
Median Household Income	\$39,720	\$42,928	\$36,616	\$49,399
Educational Status				
No Diploma	28%	32%	30%	22%
High School Diploma	22%	28%	20%	23%
Some College	29%	25%	23%	23%
Bachelor's or Higher	21%	15%	27%	32%
Housing and Households				
Total housing units	33,067	37,838	782,378	943,183
Occupied	94%	91%	92%	89%
Vacant	6%	9%	8%	11%
Total households	30,990	34,566	717,945	838,950
Family households	23,526	25,568	457,549	491,778
Median Housing Value	\$63,388	\$100,590	\$79,300	\$149,000

Description

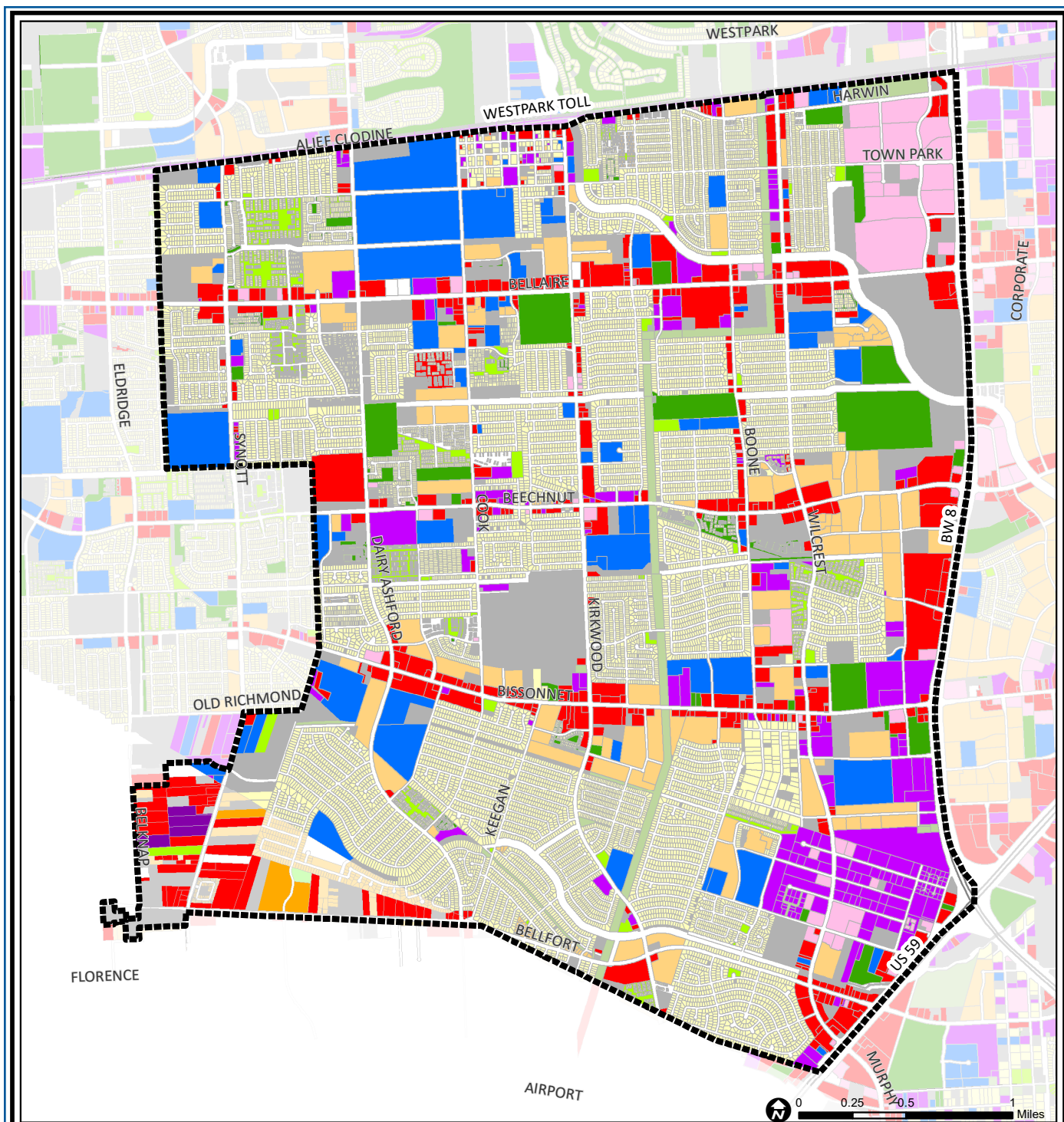
Alief is a large ethnically diverse community on Houston's far southwest side of Beltway 8. Most of the area is in Alief ISD, although a portion extends into Fort Bend County and is serviced by Fort Bend ISD. Alief is a collection of medium-sized subdivisions with moderately priced homes and large affordably priced apartment and condominium complexes. The area's diversity is reflected in the stores found in shopping centers lining the area's major thoroughfares.

Highlights

- ✓ Houston City Council Districts F & J
- ✓ Alief Independent School District
- ✓ Fort Bend Independent School District
- ✓ Houston Independent School District
- ✓ 6 Police beats (includes bordering beats)
- ✓ 9,041 acres (14.13 sq. miles)



**PLANNING &
DEVELOPMENT
DEPARTMENT**



Alief: Land Use

Freeway	Commercial	Parks and Open Space
Rail Road	Office	Undeveloped
Super Neighborhood Boundary	Industrial	Agricultural Production
Single-family Residential	Public and Institutional	Open Water
Multi-family Residential	Transportation and Utilities	Unknown

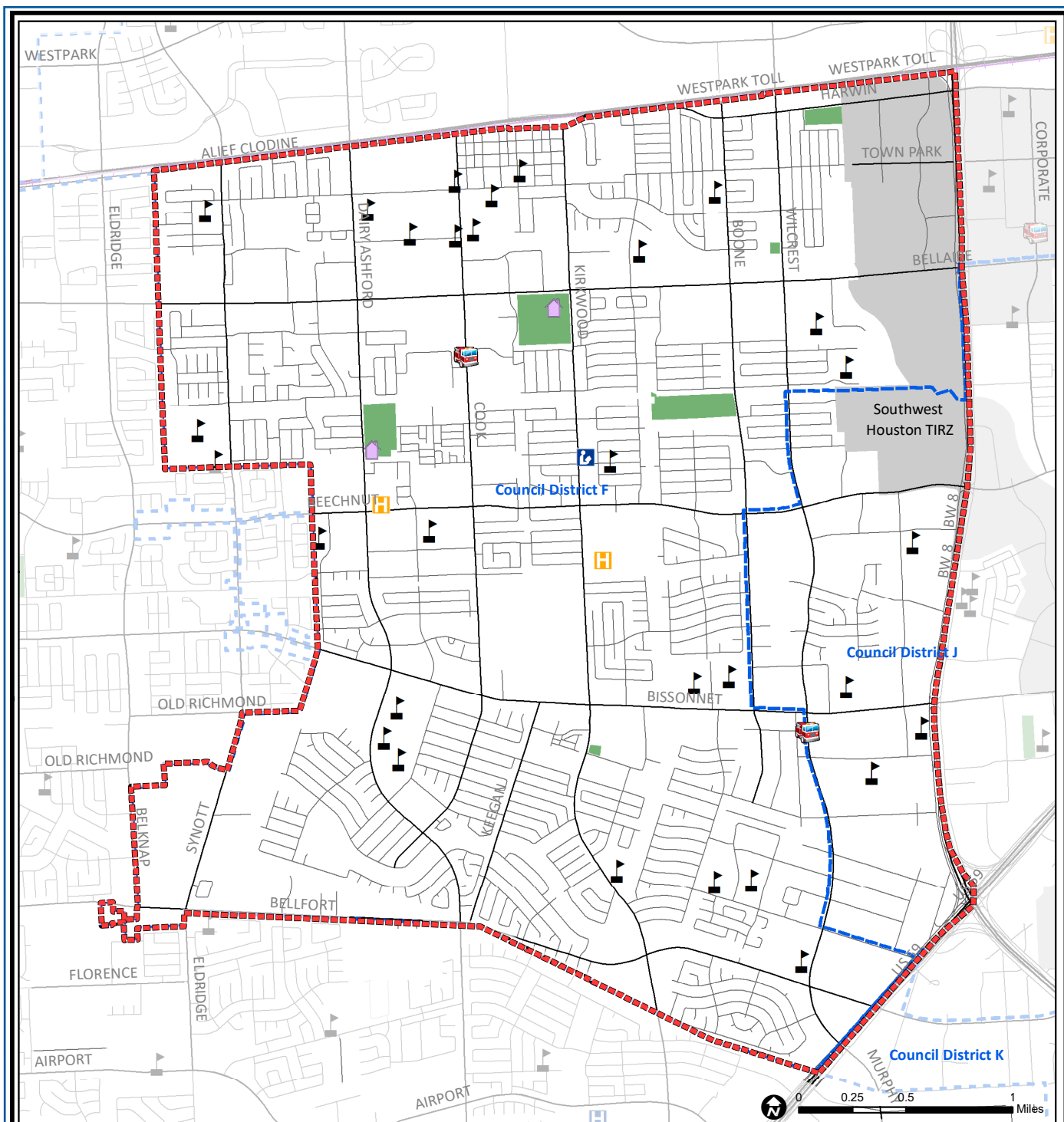
Source: City of Houston GIS Database,
Harris County Appraisal District

Date: May 20, 2019

This map is made available for reference purposes only and should not be substituted for a survey product. The City of Houston will not accept liability of any kind in conjunction with its use.



**PLANNING &
DEVELOPMENT
DEPARTMENT**



Alief: Public Facilities

Super Neighborhood Boundary

Community Centers

Fire Station

Police Station

School

Airports

Harris County Hospitals

Private Hospitals

Other Health Facilities

Library

Rail Road

Metro Rail Stations

Metro Rail Line

Parks

TIRZ

Source: City of Houston GIS Database

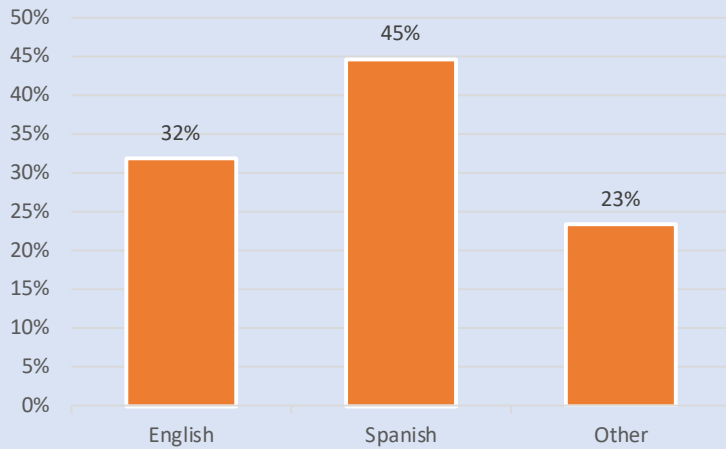
Date: May 2019

This map is made available for reference purposes only and should not be substituted for a survey product. The City of Houston will not accept liability of any kind in conjunction with its use.

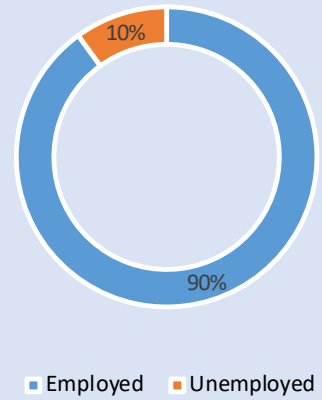


**PLANNING &
DEVELOPMENT
DEPARTMENT**

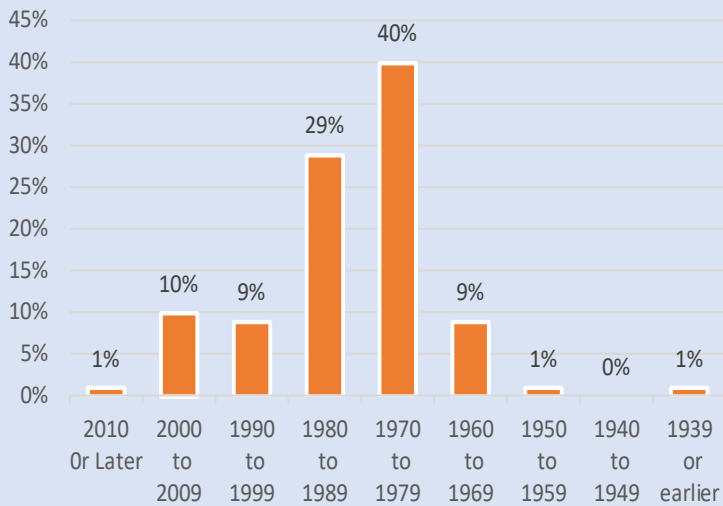
Language Spoken at Home



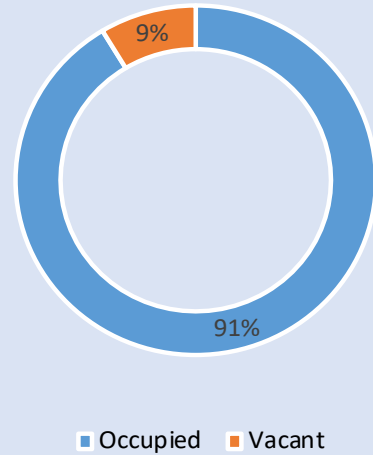
Employment Status



Housing Units by Year Built



Housing Occupancy



Source: U.S. Census Bureau, 2000
American Community Survey, 2013-2017 Estimates



**PLANNING &
DEVELOPMENT
DEPARTMENT**