

SUPER

Neighborhood

RESOURCE ASSESSMENT



	Super Neighborhood		Houston	
Pop. characteristics	2000	2017	2000	2017
Total population	33,809	20,227	1,953,631	2,267,336
Persons per sq. mile	8,452	8,304	3,166	3,394
Age of Population				
Under 5 years	10%	18%	8%	8%
5- 17 years	18%	20%	19%	17%
18- 64 years	63%	61%	64%	65%
65 and over	8%	9%	9%	10%
Ethnicity				
Non Hispanic Whites	25%	20%	31%	25%
Non Hispanic Blacks	36%	15%	25%	22%
Hispanics	33%	60%	37%	44%
Non Hispanic Asians	4%	3%	6%	7%
Non Hispanic Others	2%	2%	1%	2%
Income				
Under \$25,000	40%	36%	33%	26%
\$25,000 to \$49,999	34%	29%	31%	25%
\$50,000 to \$99,999	21%	24%	24%	26%
Over \$100,000	6%	11%	12%	23%
Median Household Income	\$36,030	\$37,879	\$36,616	\$49,399
Educational Status				
No Diploma	27%	31%	30%	22%
High School Diploma	21%	30%	20%	23%
Some College	28%	19%	23%	23%
Bachelor's or Higher	24%	20%	27%	32%
Housing and Households				
Total housing units	13,811	8,017	782,378	943,183
Occupied	94%	83%	92%	89%
Vacant	6%	17%	8%	11%
Total households	13,039	6,905	717,945	838,950
Family households	8,157	4,491	457,549	491,778
Median Housing Value	\$84,162	\$147,438	\$79,300	\$149,000

Description

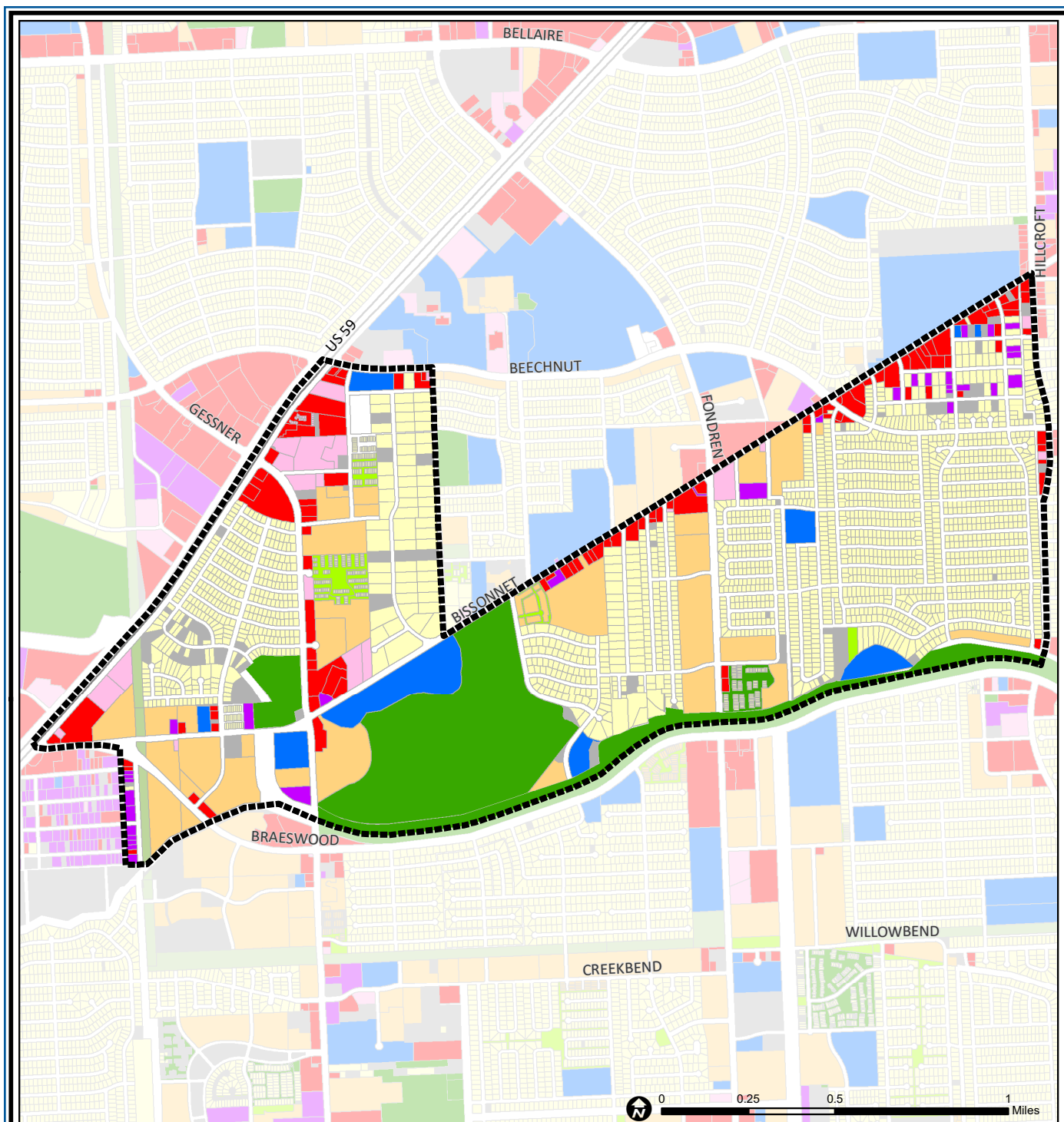
Braeburn is a part of southwest Houston along Brays Bayou west of Hillcroft. The first of these middle class subdivisions was developed after World War II at a time when Bissonnet provided the route into the city, rather than the Southwest Freeway. Development continued into the 1970s. The Braeburn Country Club is found in the center of the community. Many large tracts of land were developed as apartment complexes. Subdivisions found here include Robindell, Braeburn Glen, Braes Terrace, Larkwood, Braeburn Valley, and the acreage lot subdivision, Brae Acres.

Highlights

- ✓ Houston City Council Districts J & C
- ✓ Houston Independent School District
- ✓ Alief Independent School District
- ✓ 7 Police beats (includes bordering beats)
- ✓ 2,554 acres (4.0 sq. miles)



**PLANNING &
DEVELOPMENT
DEPARTMENT**



Braeburn: Land Use

Freeway	Commercial	Parks and Open Space
Rail Road	Office	Undeveloped
Super Neighborhood Boundary	Industrial	Agricultural Production
Single-family Residential	Public and Institutional	Open Water
Multi-family Residential	Transportation and Utilities	Unknown

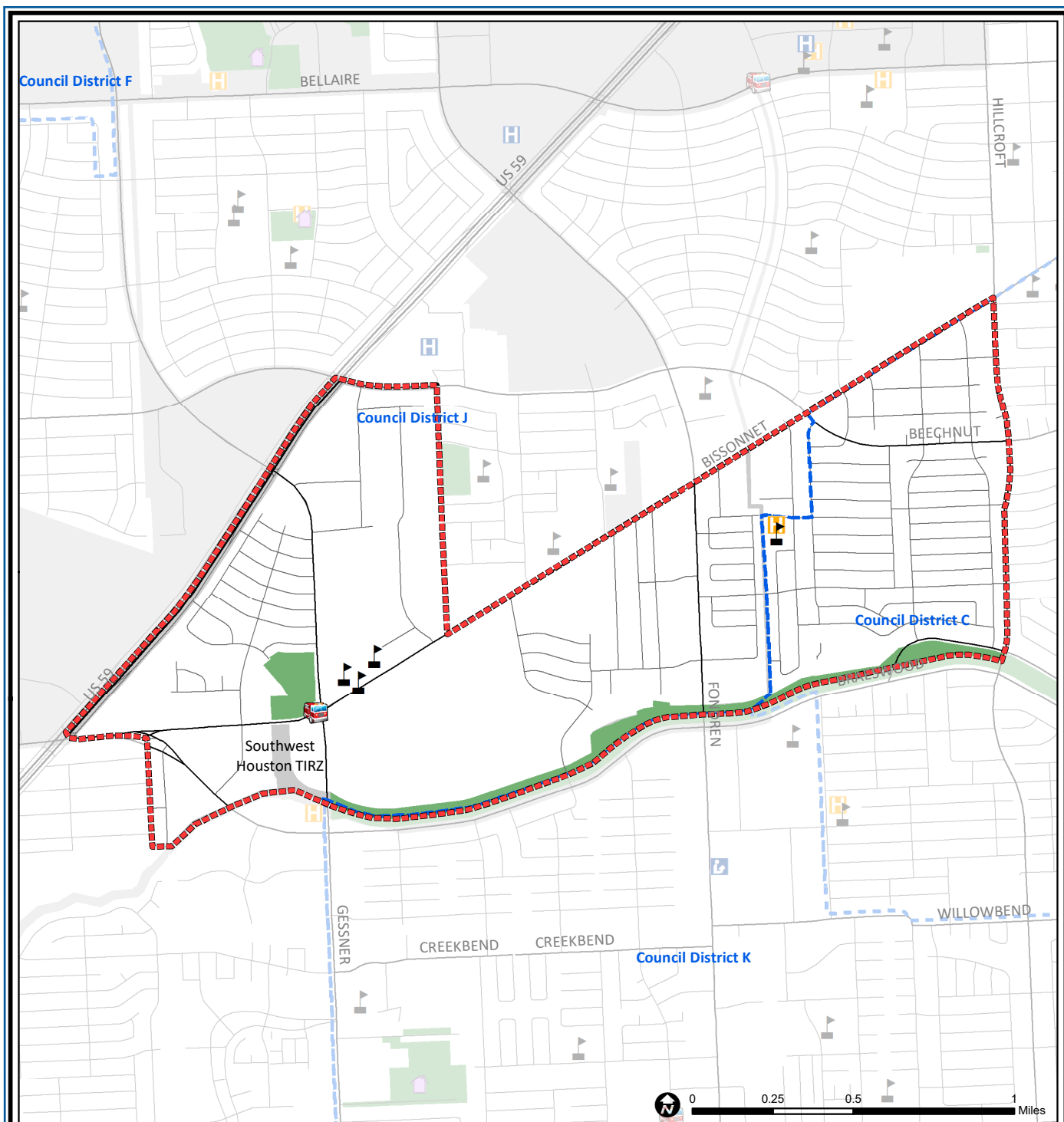
Source: City of Houston GIS Database,
Harris County Appraisal District

Date: May 20, 2019

This map is made available for reference purposes only and should not be substituted for a survey product. The City of Houston will not accept liability of any kind in conjunction with its use.



**PLANNING &
DEVELOPMENT
DEPARTMENT**



Braeburn: Public Facilities

Super Neighborhood Boundary

Community Centers

Fire Station

Police Station

School

Airports

Harris County Hospitals

Private Hospitals

Other Health Facilities

Library

Rail Road

Metro Rail Stations

Metro Rail Line

Parks

TIRZ

Source: City of Houston GIS Database

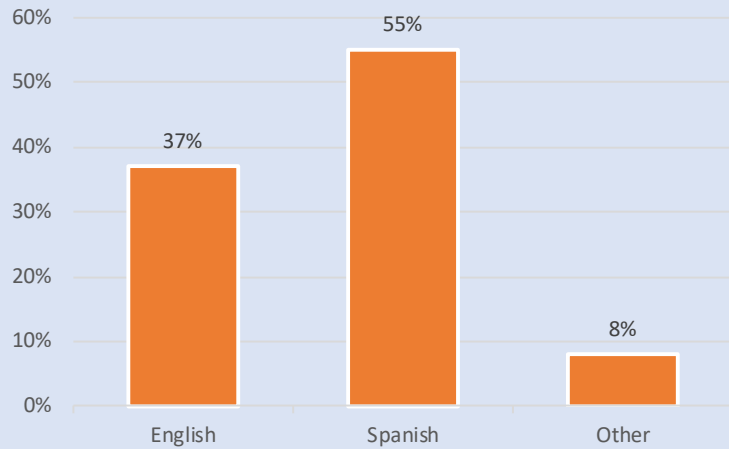
Date: May 2019

This map is made available for reference purposes only and should not be substituted for a survey product. The City of Houston will not accept liability of any kind in conjunction with its use.

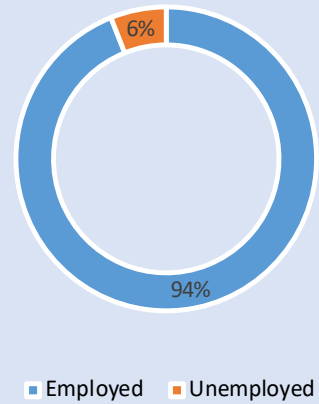


**PLANNING &
DEVELOPMENT
DEPARTMENT**

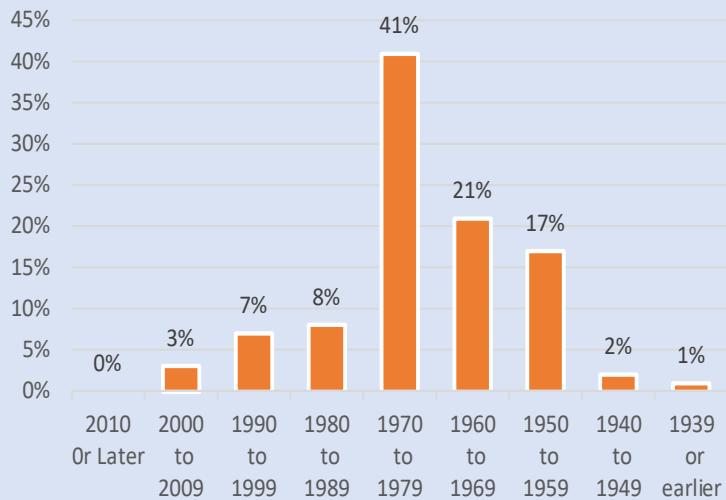
Language Spoken at Home



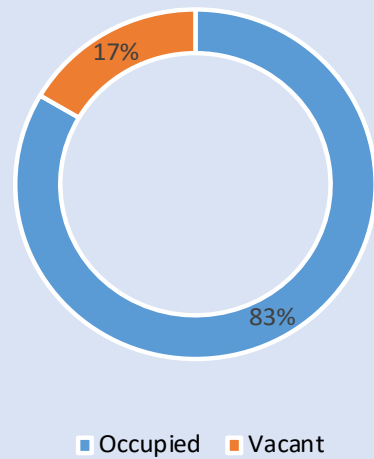
Employment Status



Housing Units by Year Built



Housing Occupancy



Source: U.S. Census Bureau, 2000
American Community Survey, 2013-2017 Estimates



**PLANNING &
DEVELOPMENT
DEPARTMENT**